

Data Path : Z:\pestpcbsrv\HPCHEM1\ECD_R\Data\PR062719\
 Data File : PR038966.D
 Signal(s) : Signal #1: ECD1A.ch Signal #2: ECD2B.ch
 Acq On : 27 Jun 2019 21:07
 Operator : SM\AJ
 Sample : K3475-03
 Misc :
 ALS Vial : 35 Sample Multiplier: 1

Instrument :
 ECD_R
 ClientSampleId :
 SOILS-3

Integration File signal 1: autoint1.e
 Integration File signal 2: autoint2.e
 Quant Time: Jun 28 03:47:17 2019
 Quant Method : Z:\pestpcbsrv\HPCHEM1\ECD_R\Method\PR062619.M
 Quant Title : GC EXTRACTABLES
 QLast Update : Thu Jun 27 06:40:13 2019
 Response via : Initial Calibration
 Integrator: ChemStation

Volume Inj. : 2 µl
 Signal #1 Phase : ZB-MR2 Signal #2 Phase: ZB-MR2
 Signal #1 Info : 30Mx0.32mmx 0.50µ Signal #2 Info : 30M x 0.32mm x 0.25µm

Compound	RT#1	RT#2	Resp#1	Resp#2	ng/ml	ng/ml

System Monitoring Compounds						
1) SA Tetrachlo...	3.770	4.618	51389802	159.4E6	52.380	44.854
2) SA Decachlor...	8.715	10.359	33893143	116.2E6	14.412	15.998
Target Compounds						
3) L1 AR-1016-1	4.772	0.000	1733317	0	35.706	N.D. #
5) L1 AR-1016-3	5.075	0.000	1131283	0	29.646	N.D. #
6) L1 AR-1016-4	5.075	0.000	1131283	0	35.329	N.D. #
9) L2 AR-1221-2	4.068	0.000	990513	0	114.242	N.D. #
10) L2 AR-1221-3	4.183	0.000	1554808	0	53.824	N.D. #
11) L3 AR-1232-1	4.183	0.000	1554808	0	60.144	N.D. #
13) L3 AR-1232-3	5.075	0.000	1131283	0	71.698	N.D. #
14) L3 AR-1232-4	5.075	0.000	1131283	0	77.909	N.D. #
16) L4 AR-1242-1	4.772	0.000	1733317	0	43.046	N.D. #
18) L4 AR-1242-3	5.075	0.000	1131283	0	34.071	N.D. #
19) L4 AR-1242-4	5.075	0.000	1131283	0	33.808	N.D. #
21) L5 AR-1248-1	4.772	0.000	1733317	0	48.777	N.D. #
22) L5 AR-1248-2	5.075	0.000	1131283	0	22.299	N.D. #
23) L5 AR-1248-3	5.075	0.000	1131283	0	21.382	N.D. #
27) L6 AR-1254-2	5.828	0.000	2677331	0	31.895	N.D. #
28) L6 AR-1254-3	6.168	7.200	1997751	3979128	13.516	10.416
29) L6 AR-1254-4	6.346	0.000	508403	0	4.464	N.D. #
30) L6 AR-1254-5	6.803	7.890	1036854	2882553	7.420	8.844
31) L7 AR-1260-1	6.296	0.000	852083	0	8.775	N.D. #
32) L7 AR-1260-2	6.477	0.000	666938	0	5.296	N.D. #
33) L7 AR-1260-3	6.632	0.000	1078393	0	9.493	N.D. #
35) L7 AR-1260-5	7.335	8.517	1569704	3266273	5.955	4.660
37) L8 AR-1262-2	7.335	8.517	1569704	3266273	4.420	3.402
38) L8 AR-1262-3	7.679	0.000	1334441	0	9.919	N.D. #
39) L8 AR-1262-4	7.679	0.000	1334441	0	5.101	N.D. #
41) L9 AR-1268-1	7.679	0.000	1334441	0	3.709	N.D. #
42) L9 AR-1268-2	7.679	0.000	1334441	0	3.991	N.D. #

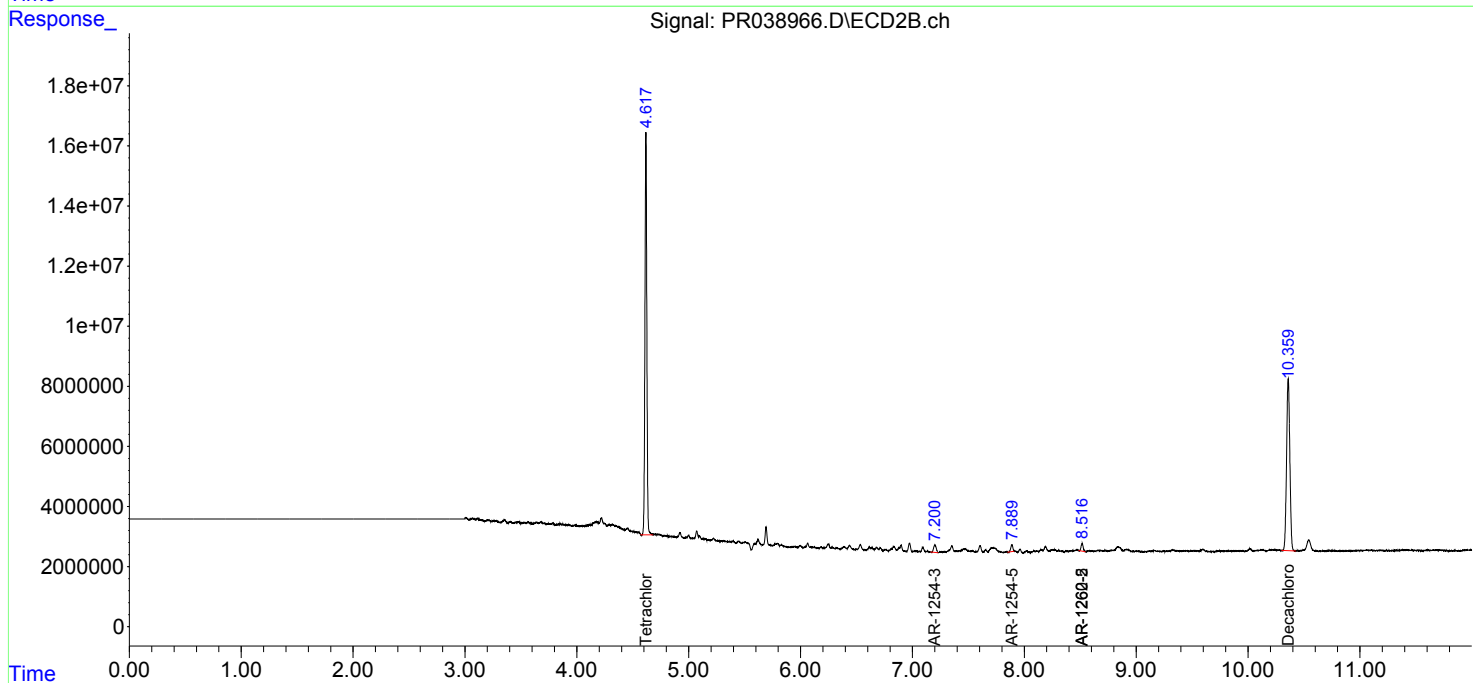
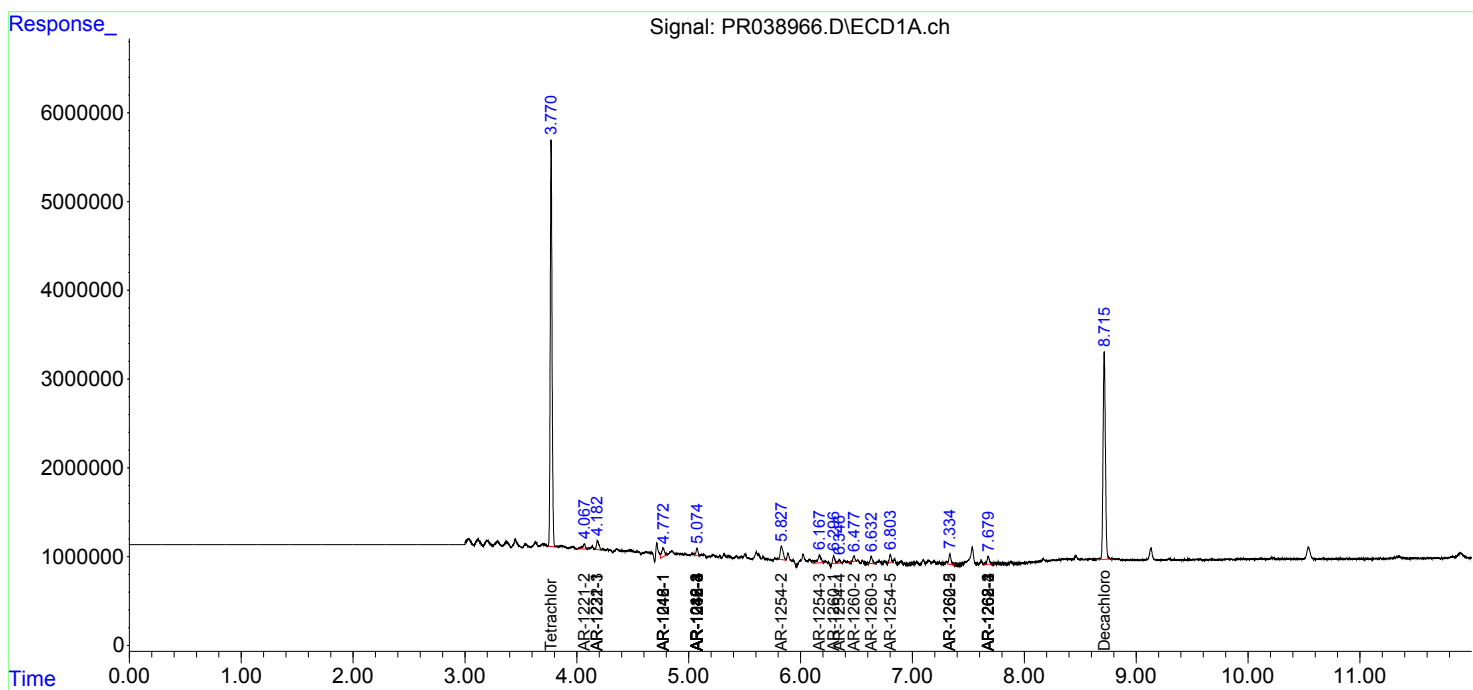
(f)=RT Delta > 1/2 Window (#)=Amounts differ by > 25% (m)=manual int.

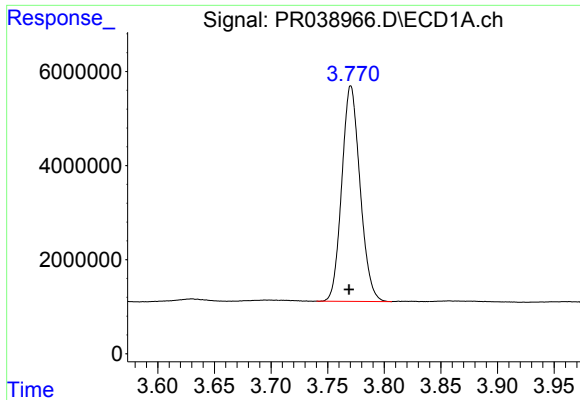
Data Path : Z:\pestpcbsrv\HPCHEM1\ECD_R\Data\PR062719\
 Data File : PR038966.D
 Signal(s) : Signal #1: ECD1A.ch Signal #2: ECD2B.ch
 Acq On : 27 Jun 2019 21:07
 Operator : SM\AJ
 Sample : K3475-03
 Misc :
 ALS Vial : 35 Sample Multiplier: 1

Instrument :
 ECD_R
 ClientSampled :
 SOILS-3

Integration File signal 1: autoint1.e
 Integration File signal 2: autoint2.e
 Quant Time: Jun 28 03:47:17 2019
 Quant Method : Z:\pestpcbsrv\HPCHEM1\ECD_R\Method\PR062619.M
 Quant Title : GC EXTRACTABLES
 QLast Update : Thu Jun 27 06:40:13 2019
 Response via : Initial Calibration
 Integrator: ChemStation

Volume Inj. : 2 µl
 Signal #1 Phase : ZB-MR1 Signal #2 Phase: ZB-MR2
 Signal #1 Info : 30Mx0.32mmx 0.50µ Signal #2 Info : 30M x 0.32mm x 0.25µm

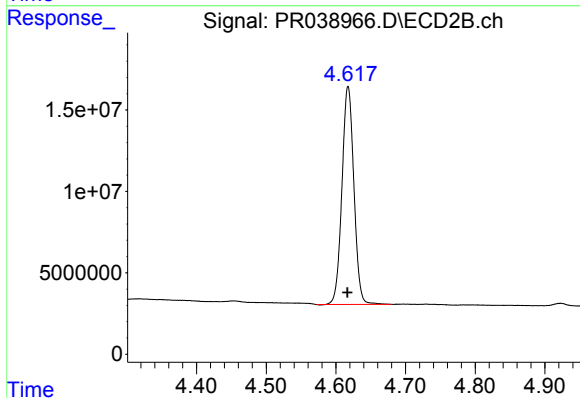




#1 Tetrachloro-m-xylene

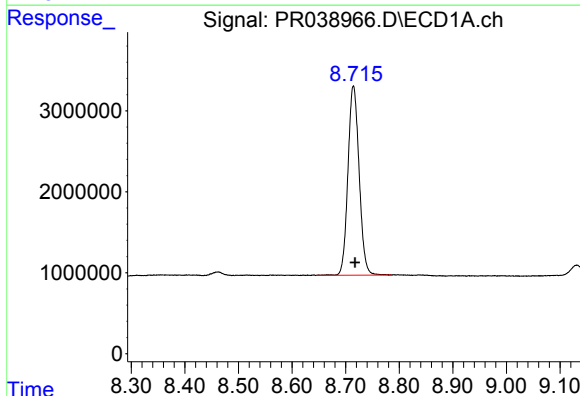
R.T.: 3.770 min
 Delta R.T.: 0.001 min
 Response: 51389802
 Conc: 52.38 ng/ml

Instrument :
 ECD_R
 ClientSampled :
 SOILS-3



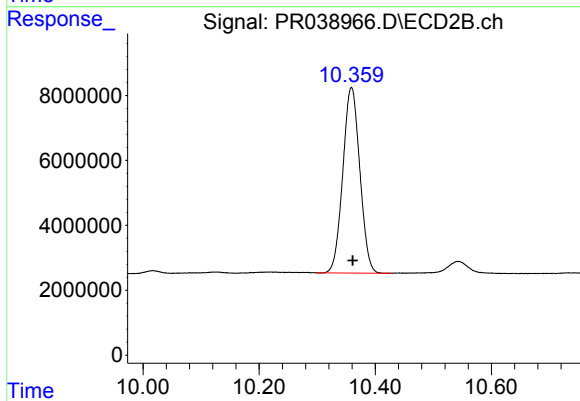
#1 Tetrachloro-m-xylene

R.T.: 4.618 min
 Delta R.T.: 0.000 min
 Response: 159433029
 Conc: 44.85 ng/ml



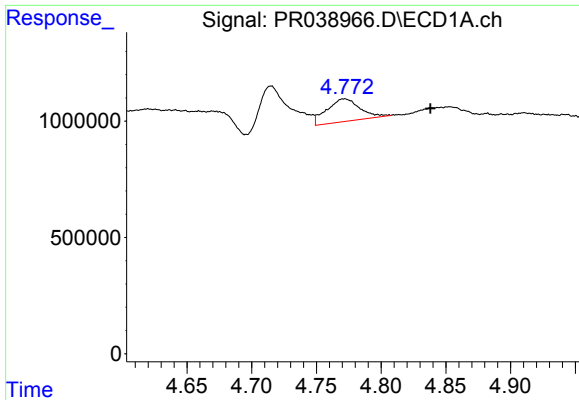
#2 Decachlorobiphenyl

R.T.: 8.715 min
 Delta R.T.: -0.003 min
 Response: 33893143
 Conc: 14.41 ng/ml



#2 Decachlorobiphenyl

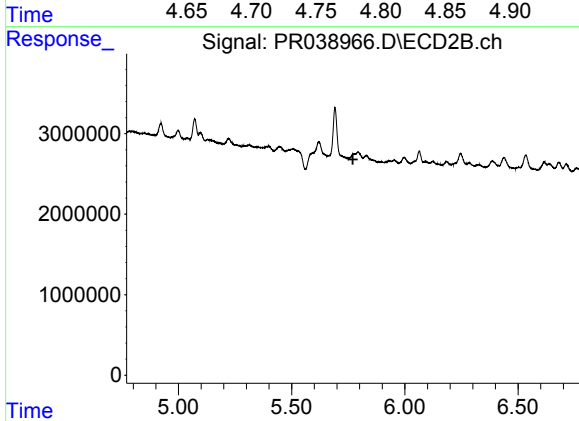
R.T.: 10.359 min
 Delta R.T.: -0.002 min
 Response: 116185115
 Conc: 16.00 ng/ml



#3 AR-1016-1

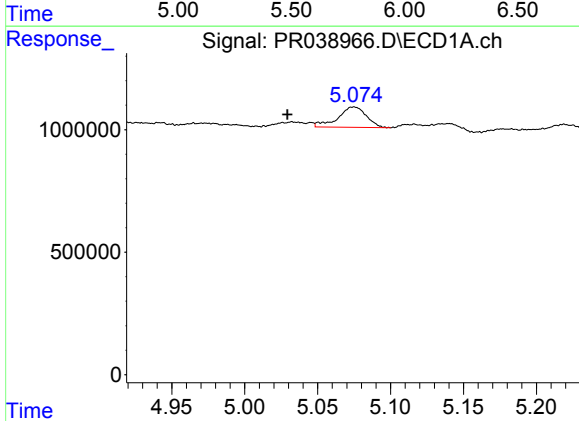
R.T.: 4.772 min
 Delta R.T.: -0.066 min
 Response: 1733317
 Conc: 35.71 ng/ml

Instrument :
 ECD_R
 ClientSampled :
 SOILS-3



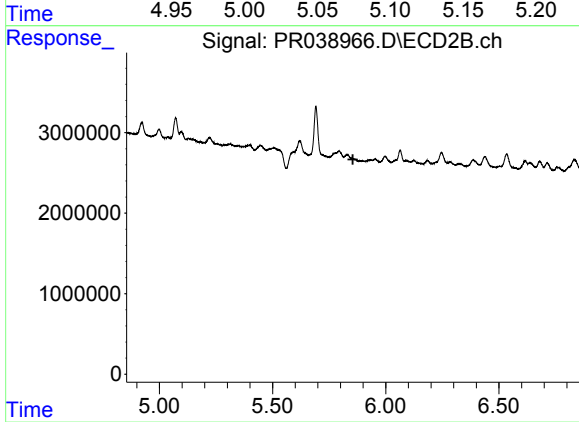
#3 AR-1016-1

R.T.: 0.000 min
 Exp R.T. : 5.770 min
 Response: 0
 Conc: N.D.



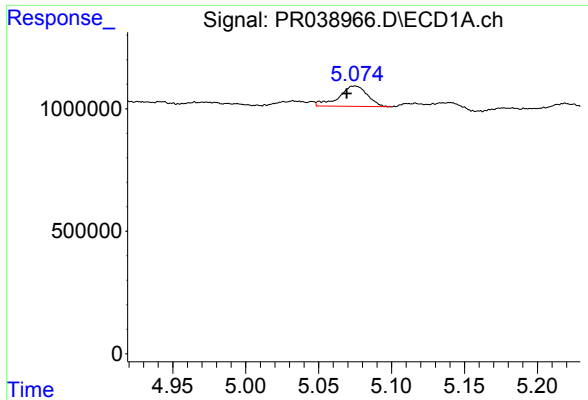
#5 AR-1016-3

R.T.: 5.075 min
 Delta R.T.: 0.046 min
 Response: 1131283
 Conc: 29.65 ng/ml



#5 AR-1016-3

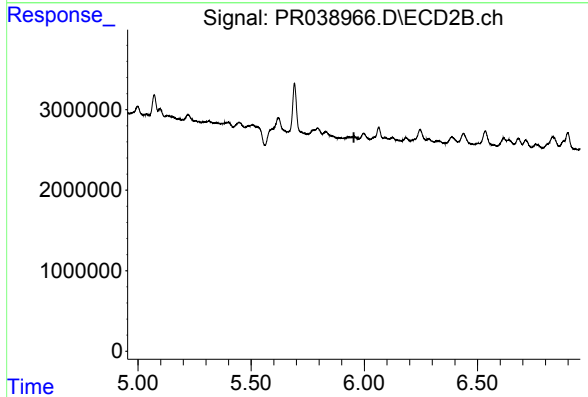
R.T.: 0.000 min
 Exp R.T. : 5.855 min
 Response: 0
 Conc: N.D.



#6 AR-1016-4

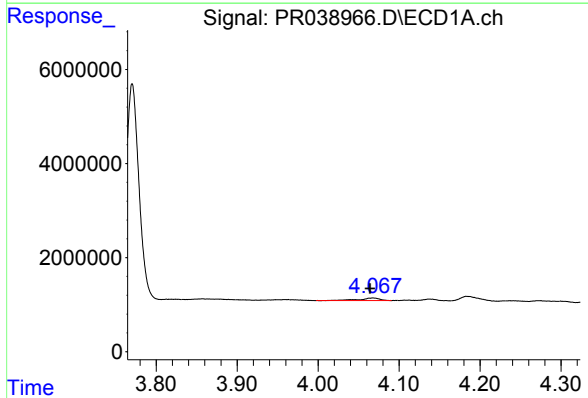
R.T.: 5.075 min
 Delta R.T.: 0.006 min
 Response: 1131283
 Conc: 35.33 ng/ml

Instrument :
 ECD_R
 ClientSampled :
 SOILS-3



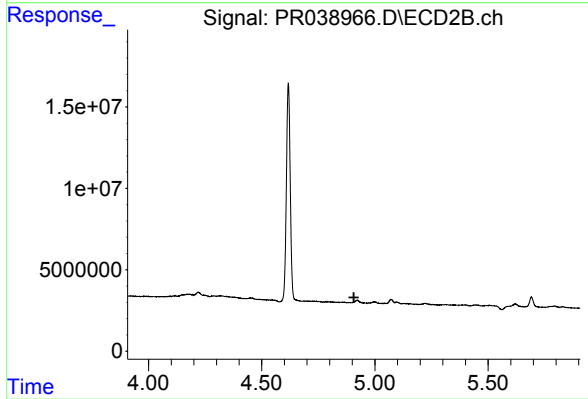
#6 AR-1016-4

R.T.: 0.000 min
 Exp R.T. : 5.954 min
 Response: 0
 Conc: N.D.



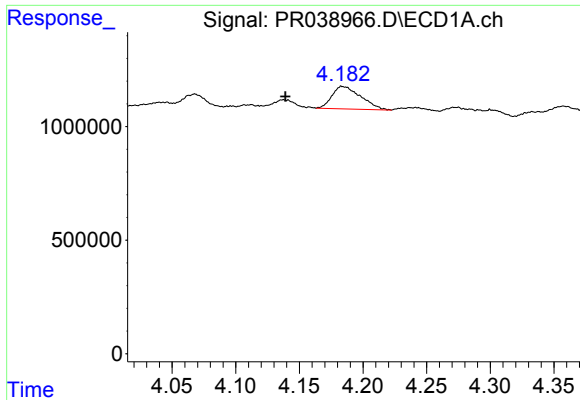
#9 AR-1221-2

R.T.: 4.068 min
 Delta R.T.: 0.004 min
 Response: 990513
 Conc: 114.24 ng/ml



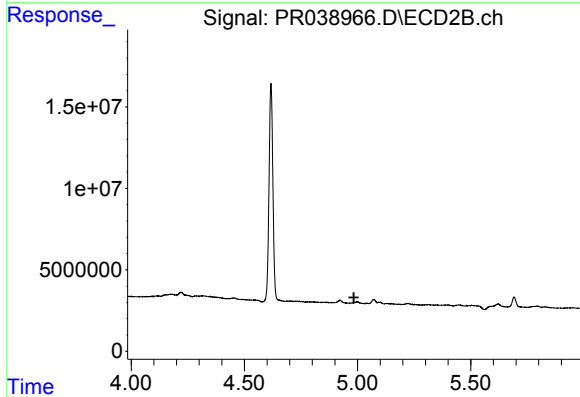
#9 AR-1221-2

R.T.: 0.000 min
 Exp R.T. : 4.907 min
 Response: 0
 Conc: N.D.

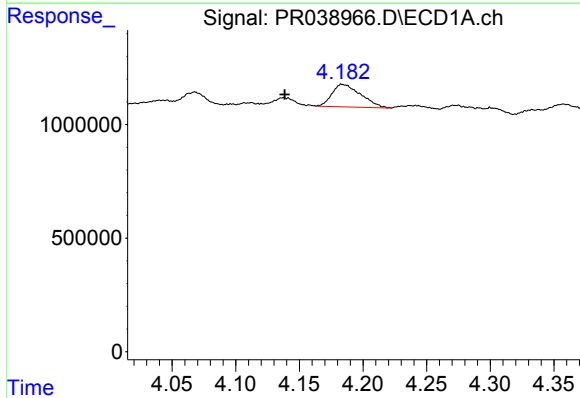


#10 AR-1221-3
 R.T.: 4.183 min
 Delta R.T.: 0.044 min
 Response: 1554808
 Conc: 53.82 ng/ml

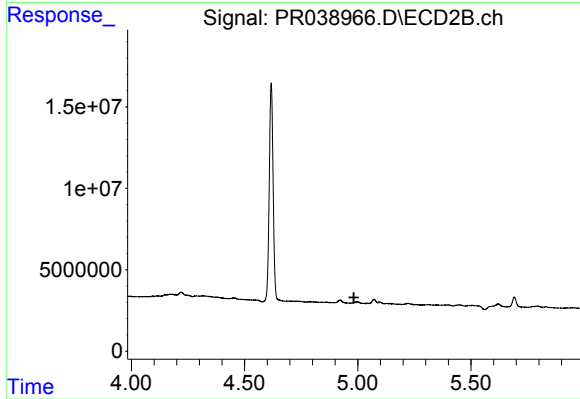
Instrument :
 ECD_R
ClientSampled :
 SOILS-3



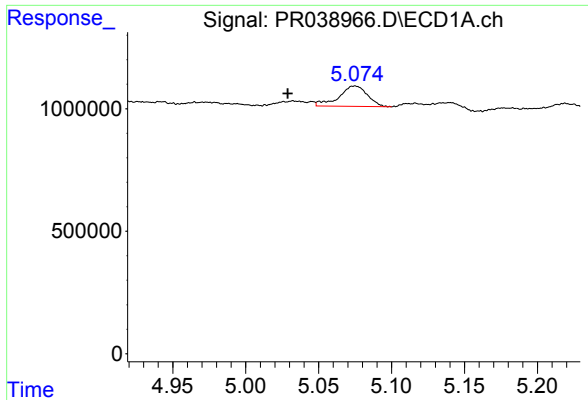
#10 AR-1221-3
 R.T.: 0.000 min
 Exp R.T. : 4.984 min
 Response: 0
 Conc: N.D.



#11 AR-1232-1
 R.T.: 4.183 min
 Delta R.T.: 0.045 min
 Response: 1554808
 Conc: 60.14 ng/ml

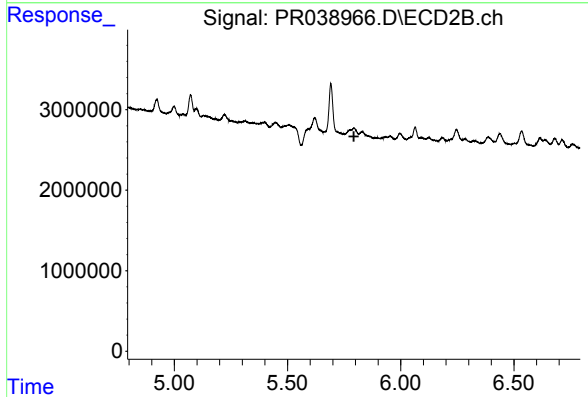


#11 AR-1232-1
 R.T.: 0.000 min
 Exp R.T. : 4.983 min
 Response: 0
 Conc: N.D.

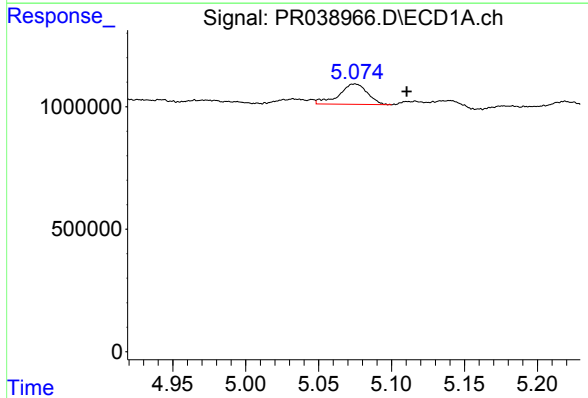


#13 AR-1232-3
 R.T.: 5.075 min
 Delta R.T.: 0.046 min
 Response: 1131283
 Conc: 71.70 ng/ml

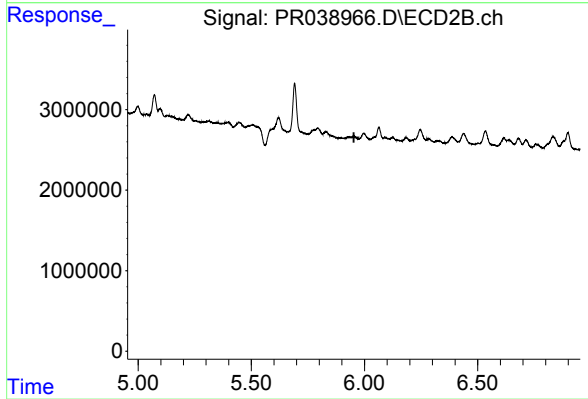
Instrument :
 ECD_R
 ClientSampled :
 SOILS-3



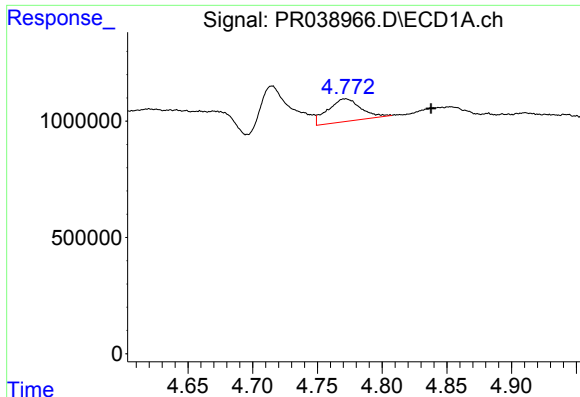
#13 AR-1232-3
 R.T.: 0.000 min
 Exp R.T. : 5.793 min
 Response: 0
 Conc: N.D.



#14 AR-1232-4
 R.T.: 5.075 min
 Delta R.T.: -0.035 min
 Response: 1131283
 Conc: 77.91 ng/ml



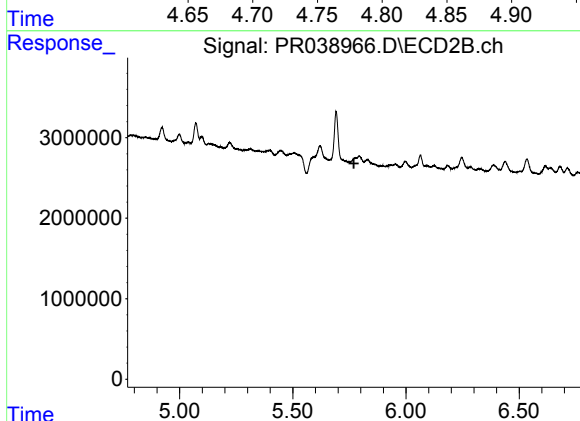
#14 AR-1232-4
 R.T.: 0.000 min
 Exp R.T. : 5.953 min
 Response: 0
 Conc: N.D.



#16 AR-1242-1

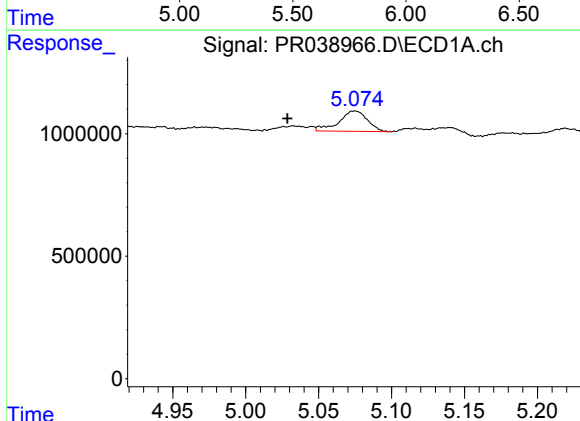
R.T.: 4.772 min
 Delta R.T.: -0.066 min
 Response: 1733317
 Conc: 43.05 ng/ml

Instrument :
 ECD_R
 ClientSampled :
 SOILS-3



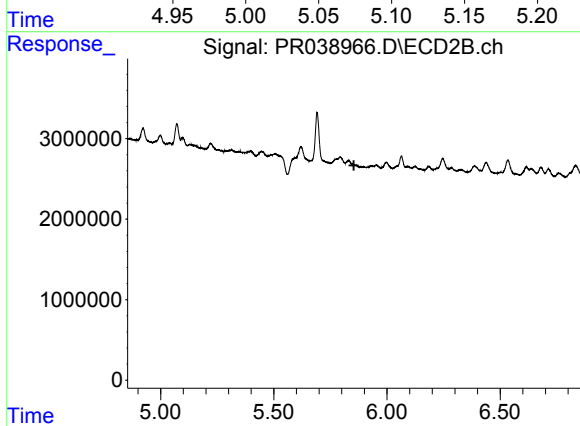
#16 AR-1242-1

R.T.: 0.000 min
 Exp R.T. : 5.770 min
 Response: 0
 Conc: N.D.



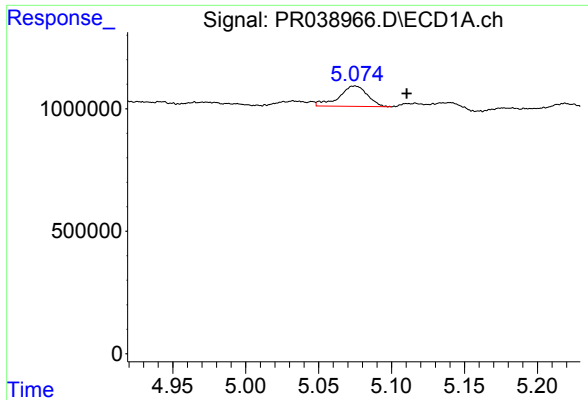
#18 AR-1242-3

R.T.: 5.075 min
 Delta R.T.: 0.046 min
 Response: 1131283
 Conc: 34.07 ng/ml



#18 AR-1242-3

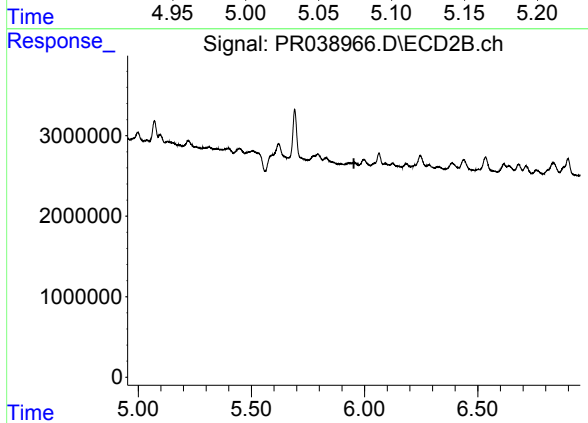
R.T.: 0.000 min
 Exp R.T. : 5.854 min
 Response: 0
 Conc: N.D.



#19 AR-1242-4

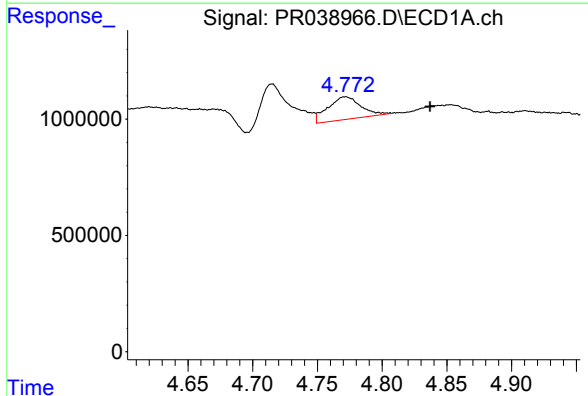
R.T.: 5.075 min
 Delta R.T.: -0.035 min
 Response: 1131283
 Conc: 33.81 ng/ml

Instrument :
 ECD_R
 ClientSampled :
 SOILS-3



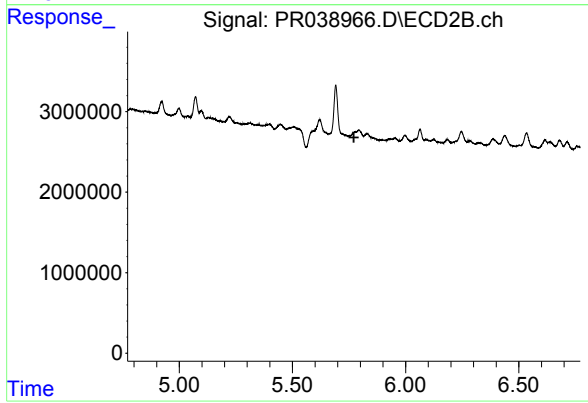
#19 AR-1242-4

R.T.: 0.000 min
 Exp R.T. : 5.953 min
 Response: 0
 Conc: N.D.



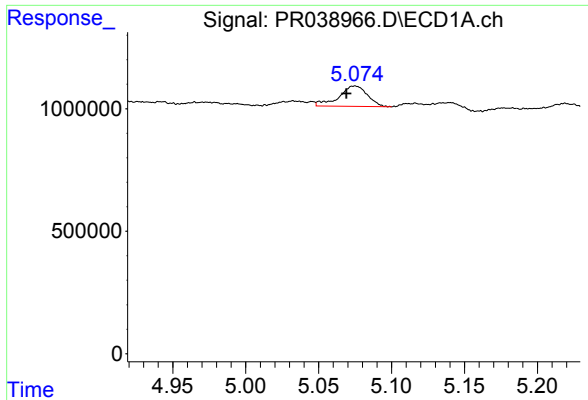
#21 AR-1248-1

R.T.: 4.772 min
 Delta R.T.: -0.065 min
 Response: 1733317
 Conc: 48.78 ng/ml



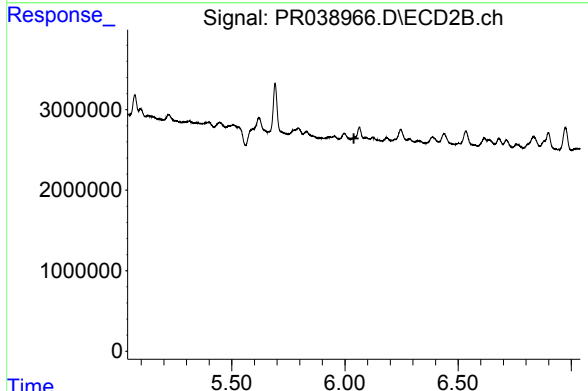
#21 AR-1248-1

R.T.: 0.000 min
 Exp R.T. : 5.771 min
 Response: 0
 Conc: N.D.

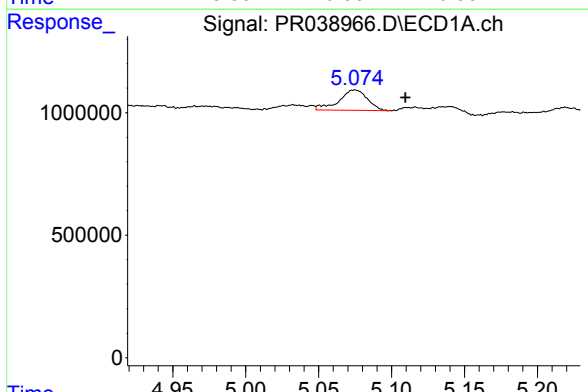


#22 AR-1248-2
 R.T.: 5.075 min
 Delta R.T.: 0.006 min
 Response: 1131283
 Conc: 22.30 ng/ml

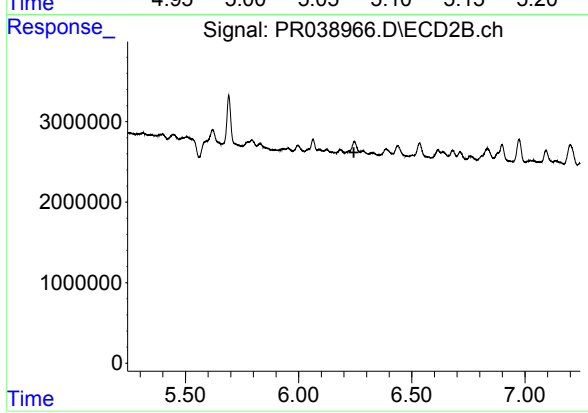
Instrument :
 ECD_R
 ClientSampled :
 SOILS-3



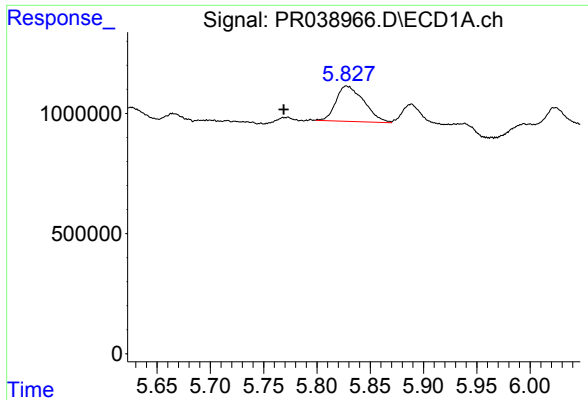
#22 AR-1248-2
 R.T.: 0.000 min
 Exp R.T. : 6.039 min
 Response: 0
 Conc: N.D.



#23 AR-1248-3
 R.T.: 5.075 min
 Delta R.T.: -0.035 min
 Response: 1131283
 Conc: 21.38 ng/ml

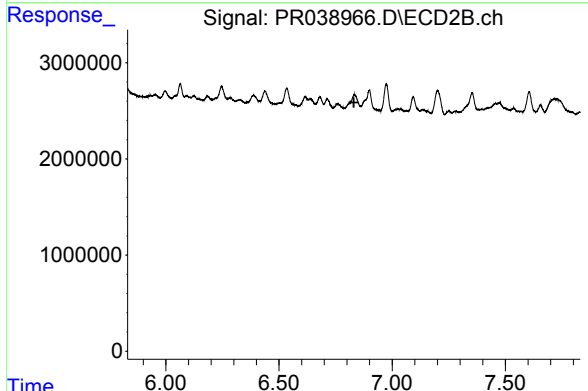


#23 AR-1248-3
 R.T.: 0.000 min
 Exp R.T. : 6.244 min
 Response: 0
 Conc: N.D.

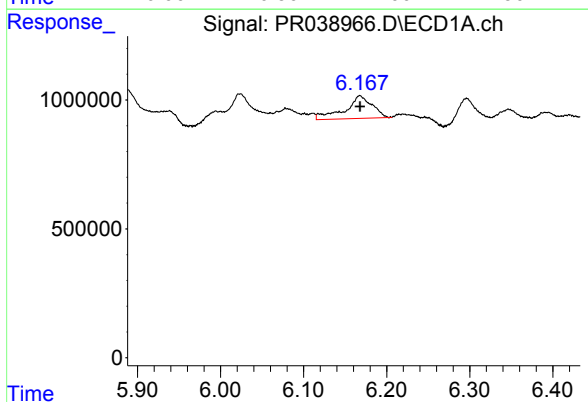


#27 AR-1254-2
 R.T.: 5.828 min
 Delta R.T.: 0.059 min
 Response: 2677331
 Conc: 31.90 ng/ml

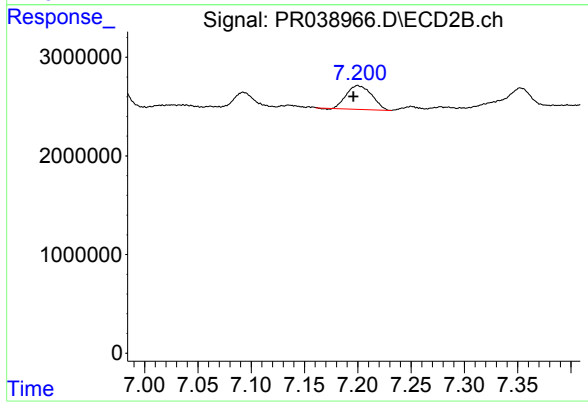
Instrument :
 ECD_R
ClientSampled :
 SOILS-3



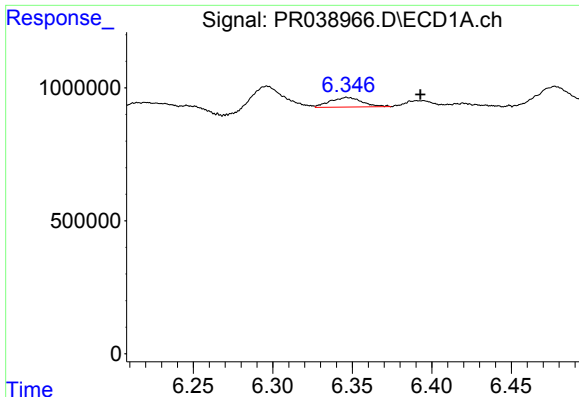
#27 AR-1254-2
 R.T.: 0.000 min
 Exp R.T. : 6.831 min
 Response: 0
 Conc: N.D.



#28 AR-1254-3
 R.T.: 6.168 min
 Delta R.T.: 0.000 min
 Response: 1997751
 Conc: 13.52 ng/ml



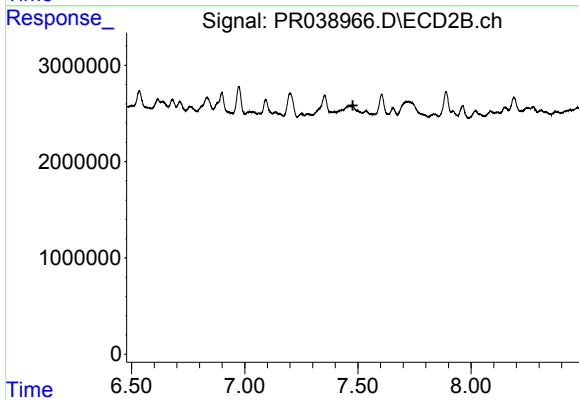
#28 AR-1254-3
 R.T.: 7.200 min
 Delta R.T.: 0.004 min
 Response: 3979128
 Conc: 10.42 ng/ml



#29 AR-1254-4

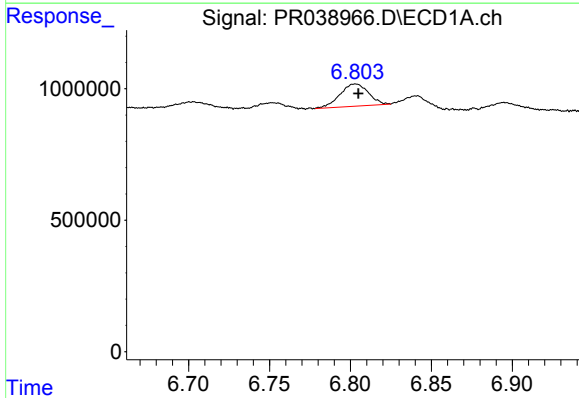
R.T.: 6.346 min
 Delta R.T.: -0.046 min
 Response: 508403
 Conc: 4.46 ng/ml

Instrument :
 ECD_R
 ClientSampleId :
 SOILS-3



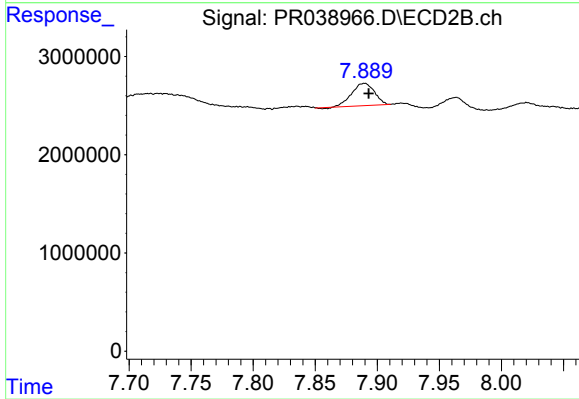
#29 AR-1254-4

R.T.: 0.000 min
 Exp R.T. : 7.478 min
 Response: 0
 Conc: N.D.



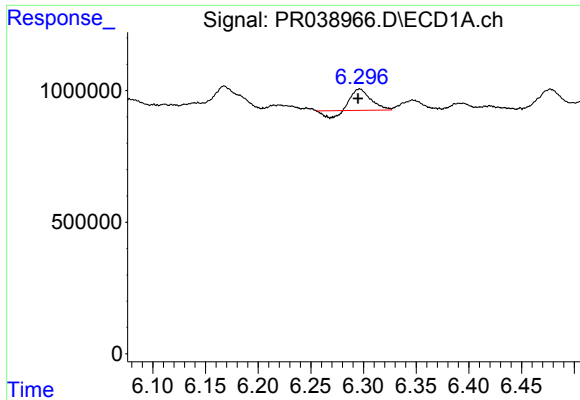
#30 AR-1254-5

R.T.: 6.803 min
 Delta R.T.: -0.002 min
 Response: 1036854
 Conc: 7.42 ng/ml



#30 AR-1254-5

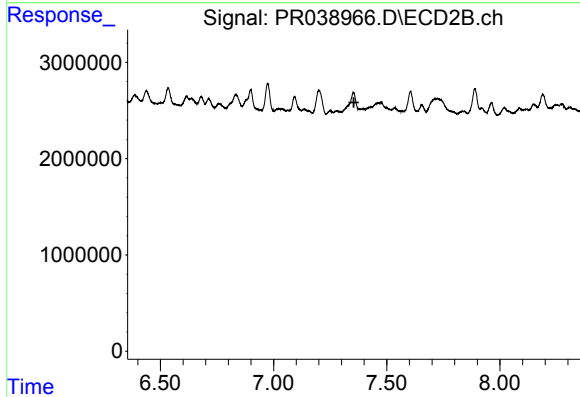
R.T.: 7.890 min
 Delta R.T.: -0.003 min
 Response: 2882553
 Conc: 8.84 ng/ml



#31 AR-1260-1

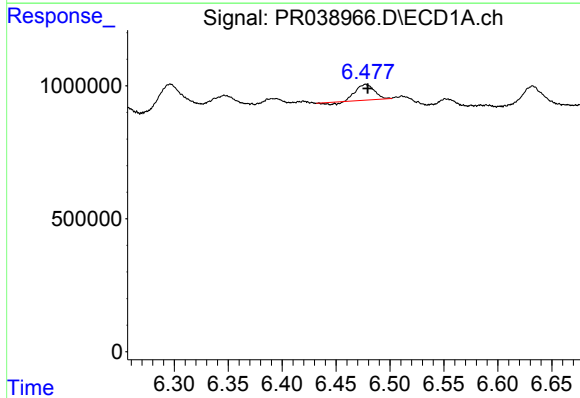
R.T.: 6.296 min
 Delta R.T.: 0.002 min
 Response: 852083
 Conc: 8.77 ng/ml

Instrument :
 ECD_R
 ClientSampled :
 SOILS-3



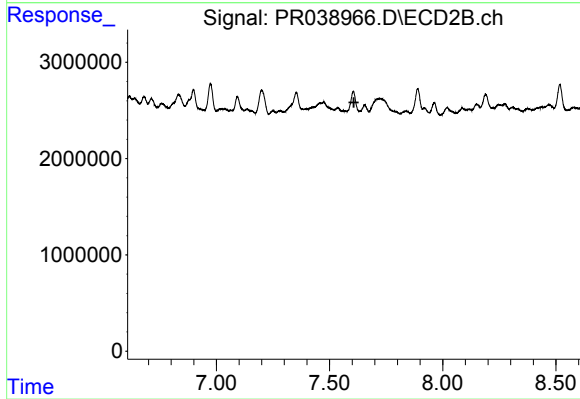
#31 AR-1260-1

R.T.: 0.000 min
 Exp R.T. : 7.355 min
 Response: 0
 Conc: N.D.



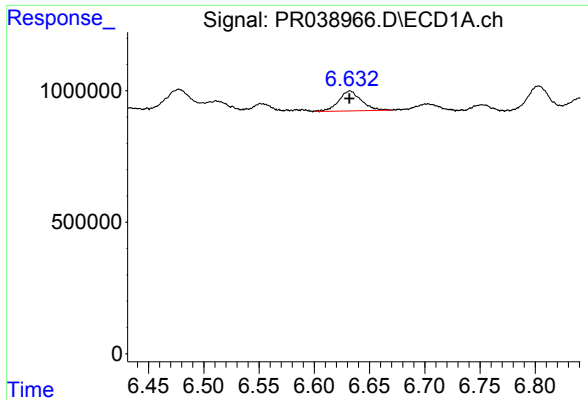
#32 AR-1260-2

R.T.: 6.477 min
 Delta R.T.: -0.002 min
 Response: 666938
 Conc: 5.30 ng/ml



#32 AR-1260-2

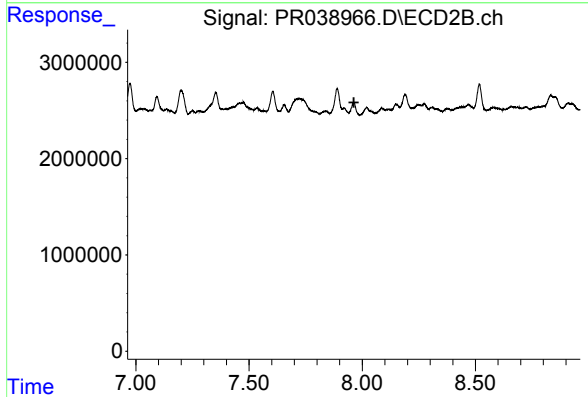
R.T.: 0.000 min
 Exp R.T. : 7.608 min
 Response: 0
 Conc: N.D.



#33 AR-1260-3

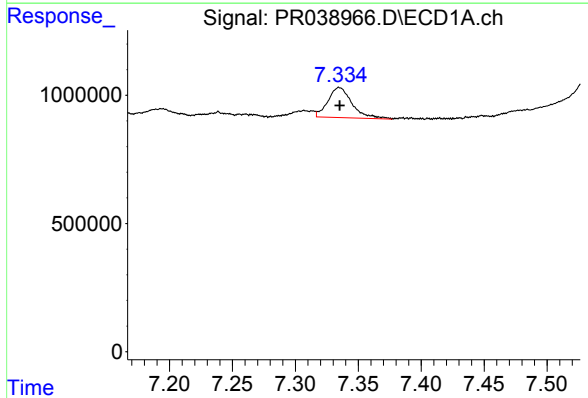
R.T.: 6.632 min
 Delta R.T.: 0.000 min
 Response: 1078393
 Conc: 9.49 ng/ml

Instrument :
 ECD_R
 ClientSampled :
 SOILS-3



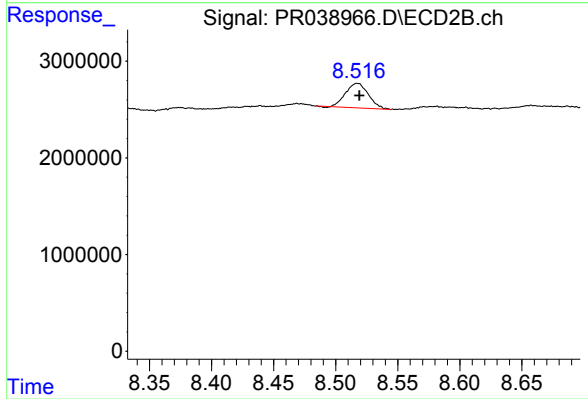
#33 AR-1260-3

R.T.: 0.000 min
 Exp R.T. : 7.963 min
 Response: 0
 Conc: N.D.



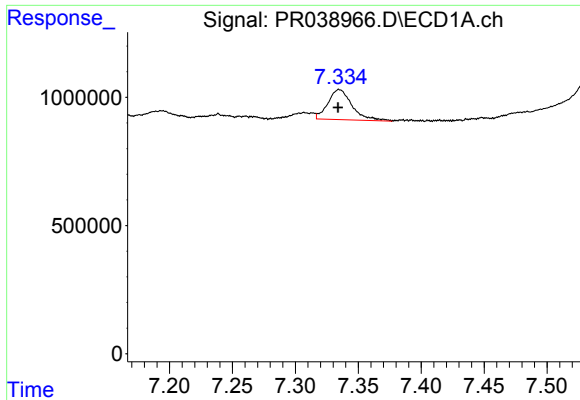
#35 AR-1260-5

R.T.: 7.335 min
 Delta R.T.: 0.000 min
 Response: 1569704
 Conc: 5.96 ng/ml



#35 AR-1260-5

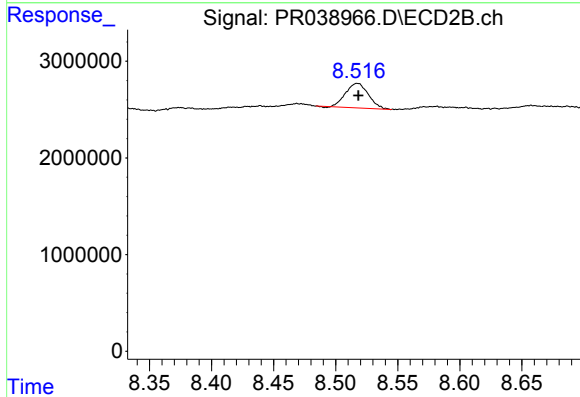
R.T.: 8.517 min
 Delta R.T.: -0.002 min
 Response: 3266273
 Conc: 4.66 ng/ml



#37 AR-1262-2

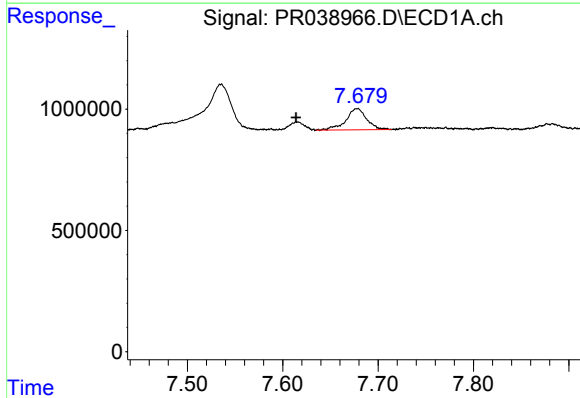
R.T.: 7.335 min
 Delta R.T.: 0.000 min
 Response: 1569704
 Conc: 4.42 ng/ml

Instrument :
 ECD_R
 ClientSampled :
 SOILS-3



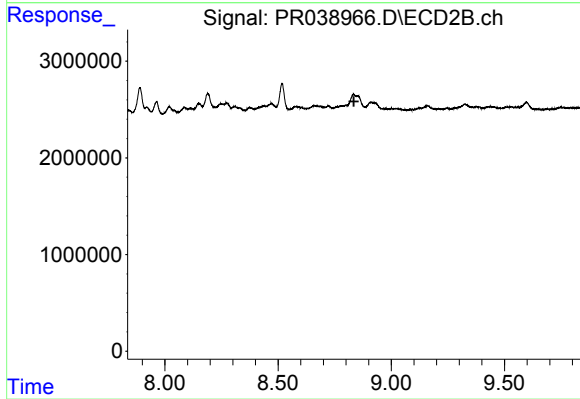
#37 AR-1262-2

R.T.: 8.517 min
 Delta R.T.: 0.000 min
 Response: 3266273
 Conc: 3.40 ng/ml



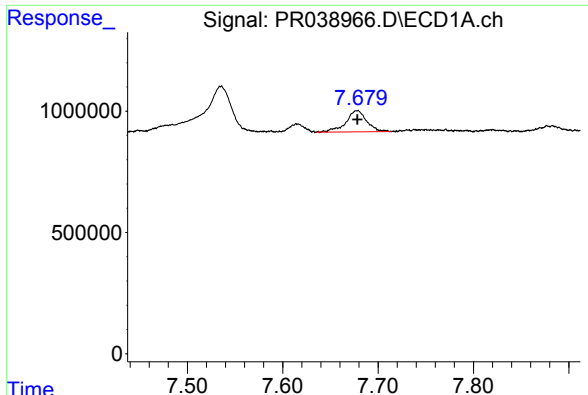
#38 AR-1262-3

R.T.: 7.679 min
 Delta R.T.: 0.065 min
 Response: 1334441
 Conc: 9.92 ng/ml



#38 AR-1262-3

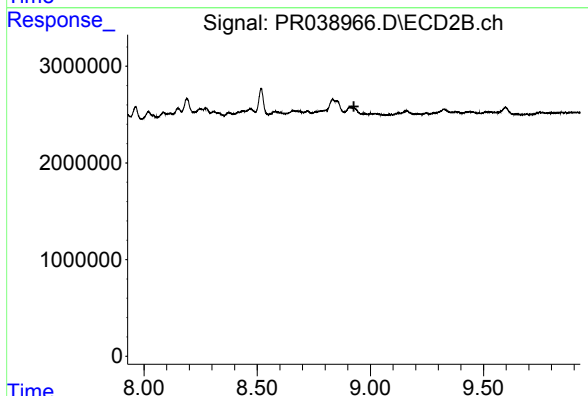
R.T.: 0.000 min
 Exp R.T. : 8.835 min
 Response: 0
 Conc: N.D.



#39 AR-1262-4

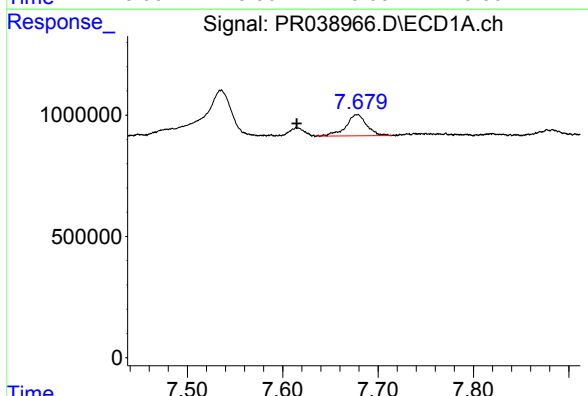
R.T.: 7.679 min
 Delta R.T.: 0.000 min
 Response: 1334441
 Conc: 5.10 ng/ml

Instrument :
 ECD_R
 ClientSampled :
 SOILS-3



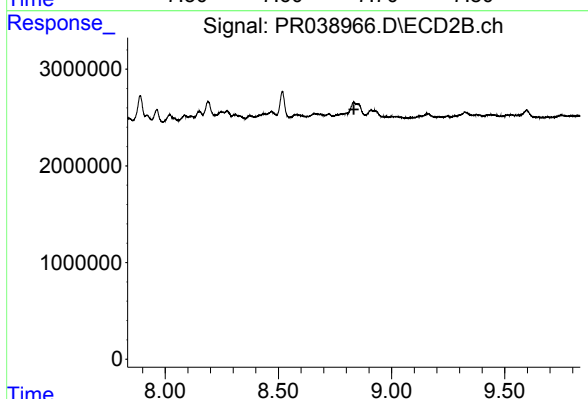
#39 AR-1262-4

R.T.: 0.000 min
 Exp R.T. : 8.927 min
 Response: 0
 Conc: N.D.



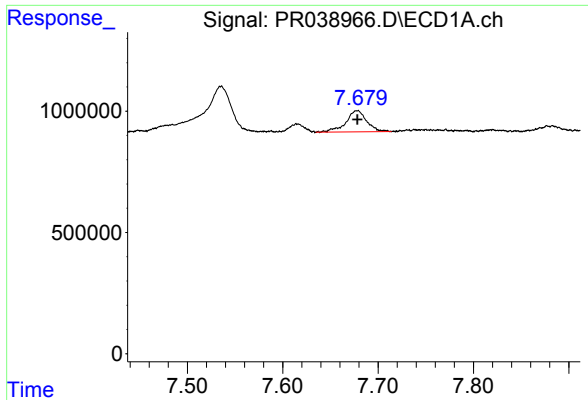
#41 AR-1268-1

R.T.: 7.679 min
 Delta R.T.: 0.064 min
 Response: 1334441
 Conc: 3.71 ng/ml



#41 AR-1268-1

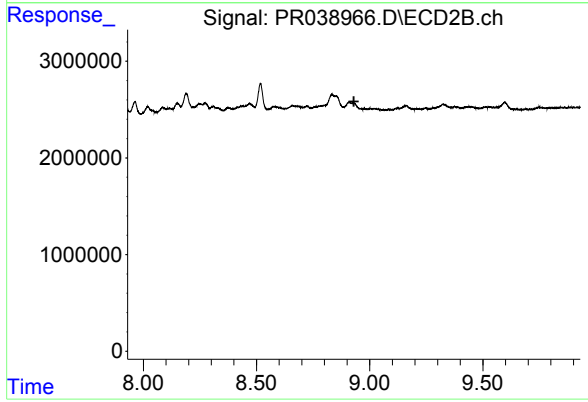
R.T.: 0.000 min
 Exp R.T. : 8.834 min
 Response: 0
 Conc: N.D.



#42 AR-1268-2

R.T.: 7.679 min
Delta R.T.: 0.000 min
Response: 1334441
Conc: 3.99 ng/ml

Instrument :
ECD_R
ClientSampleId :
SOILS-3



#42 AR-1268-2

R.T.: 0.000 min
Exp R.T. : 8.930 min
Response: 0
Conc: N.D.