

Data Path : Z:\pestpcbsrv\HPCHEM1\ECD_R\Data\PR062819\
 Data File : PR038976.D
 Signal(s) : Signal #1: ECD1A.ch Signal #2: ECD2B.ch
 Acq On : 28 Jun 2019 14:55
 Operator : SM\AJ
 Sample : AR1660CCC500
 Misc :
 ALS Vial : 3 Sample Multiplier: 1

Instrument :
 ECD_R
 ClientSampled :
 AR1660CCC500

Integration File signal 1: autoint1.e
 Integration File signal 2: autoint2.e
 Quant Time: Jun 28 22:37:25 2019
 Quant Method : Z:\pestpcbsrv\HPCHEM1\ECD_R\Method\PR062619.M
 Quant Title : GC EXTRACTABLES
 QLast Update : Thu Jun 27 06:40:13 2019
 Response via : Initial Calibration
 Integrator: ChemStation

Volume Inj. : 2 µl
 Signal #1 Phase : ZB-MR1 Signal #2 Phase: ZB-MR2
 Signal #1 Info : 30Mx0.32mmx 0.50µ Signal #2 Info : 30M x 0.32mm x 0.25µm

Compound	RT#1	RT#2	Resp#1	Resp#2	ng/ml	ng/ml
System Monitoring Compounds						
1) SA Tetrachlo...	3.769	4.614	51846897	183.1E6	52.846	51.503
2) SA Decachlor...	8.714	10.356	103.6E6	349.9E6	44.061	48.178
Target Compounds						
3) L1 AR-1016-1	4.838	5.768	23597007	77830964	486.094	456.117
4) L1 AR-1016-2	4.855	5.791	39117878	117.5E6	513.775	479.372
5) L1 AR-1016-3	5.029	5.853	19358420	69612518	507.294	455.616
6) L1 AR-1016-4	5.069	5.951	16379963	52211460	511.532	432.721
7) L1 AR-1016-5	5.280	6.240	18340551	57997989	423.181	450.694
8) L2 AR-1221-1	3.979	4.813	1767004	5342907	163.970	142.741
9) L2 AR-1221-2	4.064	4.905	2123098	8949230	244.870	303.680
10) L2 AR-1221-3	4.139	4.981	10192300	33817675	352.834	357.264
11) L3 AR-1232-1	4.139	4.981	10192300	33817675	394.265	408.414
12) L3 AR-1232-2	4.855	5.504	39117878	51517459	1189.878	1135.628
13) L3 AR-1232-3	5.029	5.791	19358420	117.5E6	1226.891	1156.728
14) L3 AR-1232-4	5.110	5.951	20882799	52211460	1438.157	1046.336 #
15) L3 AR-1232-5	5.280	6.037	18340551	53976390	1101.032	1440.103 #
16) L4 AR-1242-1	4.838	5.768	23597007	77830964	586.019	546.115
17) L4 AR-1242-2	4.855	5.791	39117878	117.5E6	582.216	571.515
18) L4 AR-1242-3	5.029	5.853	19358420	69612518	583.023	550.930
19) L4 AR-1242-4	5.110	5.951	20882799	52211460	624.068	510.567
20) L4 AR-1242-5	5.625	6.678	18427859	11081810	382.580	84.998 #
21) L5 AR-1248-1	4.838	5.768	23597007	77830964	664.038	651.766
22) L5 AR-1248-2	5.069	6.037	16379963	53976390	322.867	329.159
23) L5 AR-1248-3	5.110	6.240	20882799	57997989	394.699	298.286
24) L5 AR-1248-4	5.280	6.639	18340551	12639727	276.626	51.449 #
25) L5 AR-1248-5	5.664	6.678	4275306	11081810	58.448	47.287
26) L6 AR-1254-1	5.625	6.612	18427859	41723703	194.784	204.608
27) L6 AR-1254-2	5.769	6.826	16732343	46667156	199.333	142.724 #
28) L6 AR-1254-3	6.180	7.192	37894306	33581839	256.386	87.904 #
29) L6 AR-1254-4	6.392	7.473	4725265	24303686	41.487	82.546 #
30) L6 AR-1254-5	6.803	7.887	65903882	189.1E6	471.620	580.278
31) L7 AR-1260-1	6.294	7.352	45550467	123.8E6	469.085	454.814
32) L7 AR-1260-2	6.479	7.604	58651254	155.4E6	465.723	456.029
33) L7 AR-1260-3	6.632	7.960	52651730	120.7E6	463.482	444.785
34) L7 AR-1260-4	7.097	8.189	47348797	142.3E6	463.512	439.302
35) L7 AR-1260-5	7.335	8.516	124.8E6	318.3E6	473.401	454.204
36) L8 AR-1262-1	6.892	7.960	24621661	120.7E6	353.486	253.729 #
37) L8 AR-1262-2	7.335	8.516	124.8E6	318.3E6	351.374	331.579
38) L8 AR-1262-3	7.615	8.852	26865528	205.3E6	199.693	321.386 #
39) L8 AR-1262-4	7.678	8.907	90316694	129.3E6	345.216	267.812
40) L8 AR-1262-5	8.170	9.594	32008634	103.8E6	253.264	288.643
41) L9 AR-1268-1	7.615	8.852	26865528	205.3E6	74.677	205.207 #

Data Path : Z:\pestpcbsrv\HPCHEM1\ECD_R\Data\PR062819\
 Data File : PR038976.D
 Signal(s) : Signal #1: ECD1A.ch Signal #2: ECD2B.ch
 Acq On : 28 Jun 2019 14:55
 Operator : SM\AJ
 Sample : AR1660CCC500
 Misc :
 ALS Vial : 3 Sample Multiplier: 1

Instrument :
 ECD_R
 ClientSampleId :
 AR1660CCC500

Integration File signal 1: autoint1.e
 Integration File signal 2: autoint2.e
 Quant Time: Jun 28 22:37:25 2019
 Quant Method : Z:\pestpcbsrv\HPCHEM1\ECD_R\Method\PR062619.M
 Quant Title : GC EXTRACTABLES
 QLast Update : Thu Jun 27 06:40:13 2019
 Response via : Initial Calibration
 Integrator: ChemStation

Volume Inj. : 2 µl
 Signal #1 Phase : ZB-MR1 Signal #2 Phase: ZB-MR2
 Signal #1 Info : 30Mx0.32mmx 0.50µ Signal #2 Info : 30M x 0.32mm x 0.25µm

	Compound	RT#1	RT#2	Resp#1	Resp#2	ng/ml	ng/ml
42)	L9 AR-1268-2	7.678	8.907	90316694	129.3E6	270.108	137.261 #
43)	L9 AR-1268-3	7.883	9.156	2042316	6563010	7.444	8.387
44)	L9 AR-1268-4	8.170	9.594	32008634	103.8E6	255.618	290.110
45)	L9 AR-1268-5	8.461	10.014	8837994	31159699	8.881	10.848

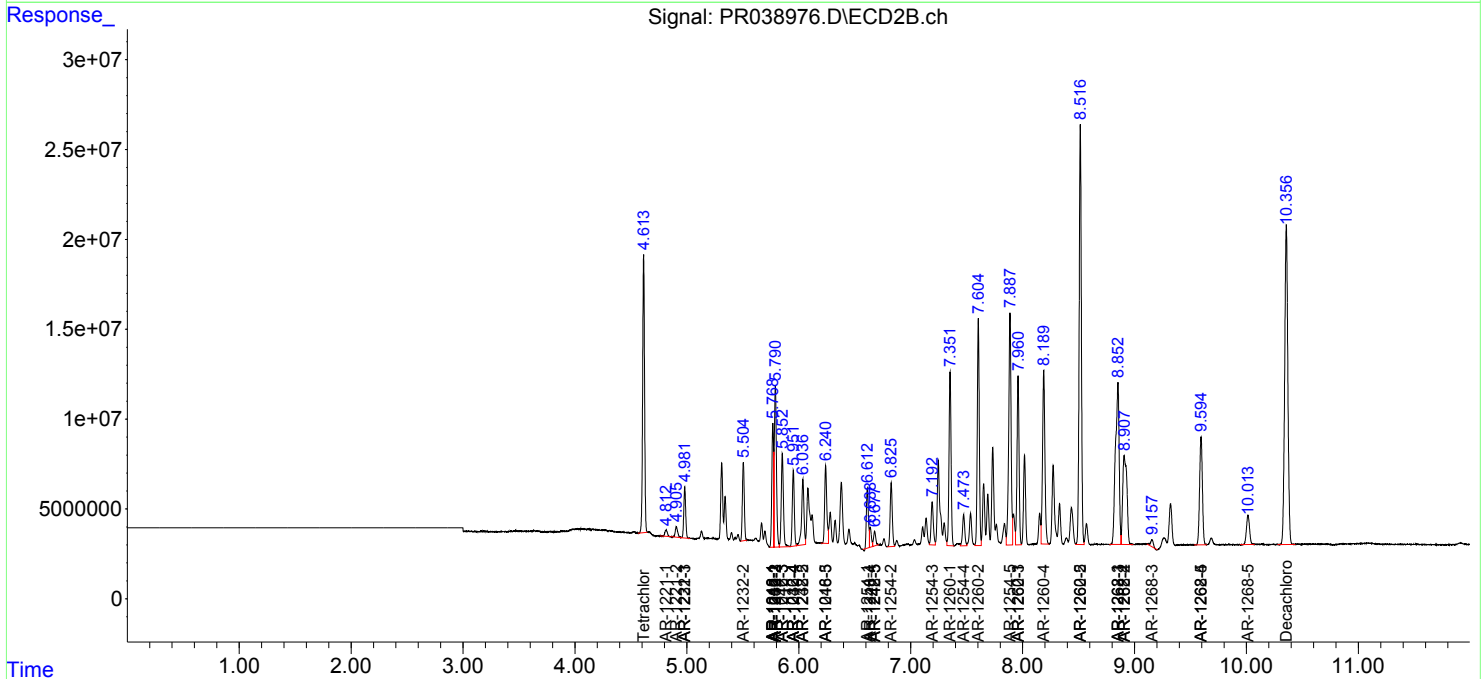
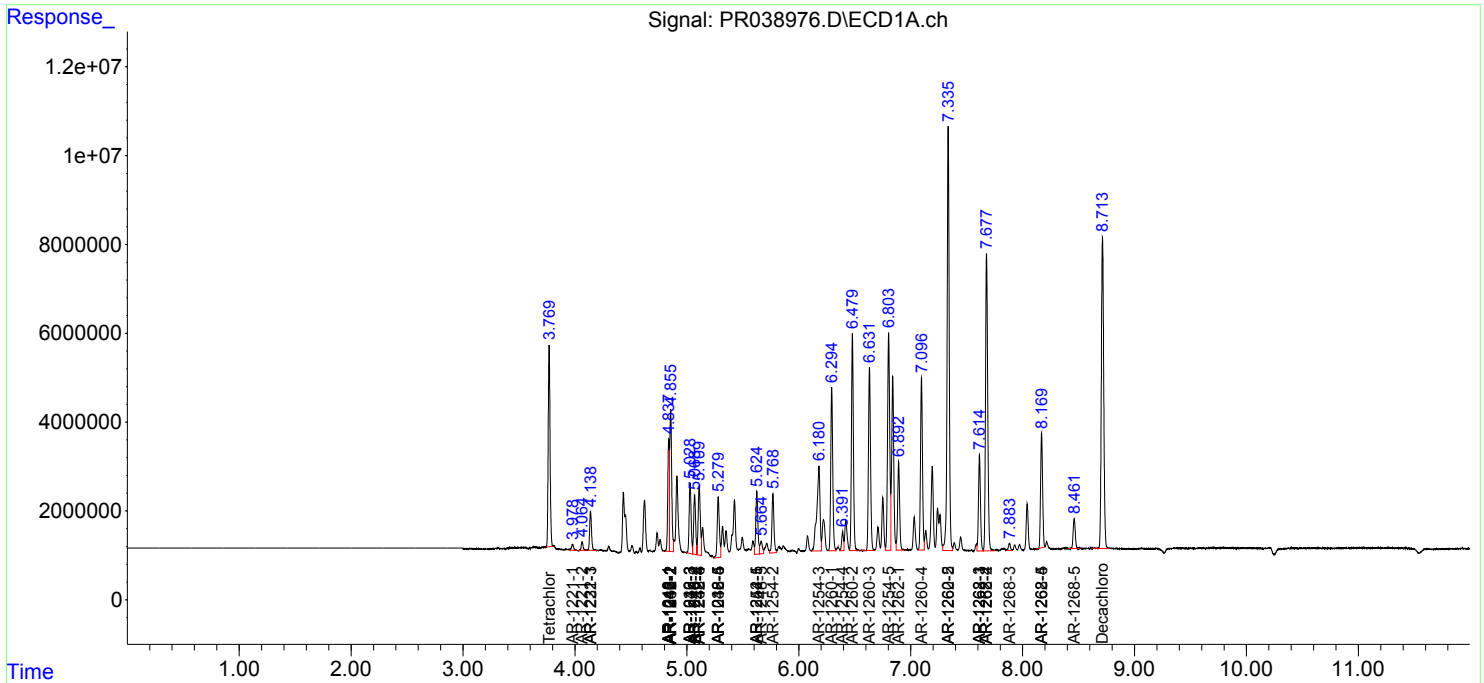
(f)=RT Delta > 1/2 Window (#)=Amounts differ by > 25% (m)=manual int.

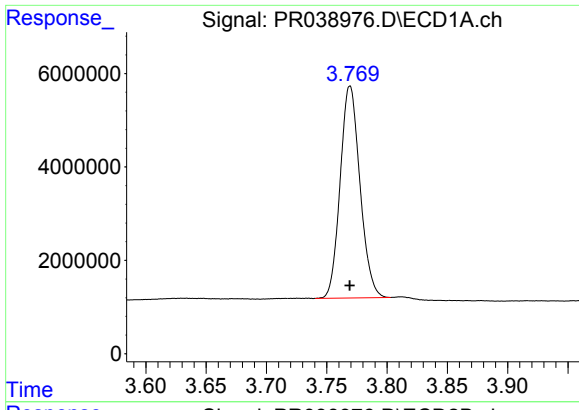
Data Path : Z:\pestpcbsrv\HPCHEM1\ECD_R\Data\PR062819\
 Data File : PR038976.D
 Signal(s) : Signal #1: ECD1A.ch Signal #2: ECD2B.ch
 Acq On : 28 Jun 2019 14:55
 Operator : SM\AJ
 Sample : AR1660CCC500
 Misc :
 ALS Vial : 3 Sample Multiplier: 1

Instrument :
 ECD_R
 Client Sampled :
 AR1660CCC500

Integration File signal 1: autoint1.e
 Integration File signal 2: autoint2.e
 Quant Time: Jun 28 22:37:25 2019
 Quant Method : Z:\pestpcbsrv\HPCHEM1\ECD_R\Method\PR062619.M
 Quant Title : GC EXTRACTABLES
 QLast Update : Thu Jun 27 06:40:13 2019
 Response via : Initial Calibration
 Integrator: ChemStation

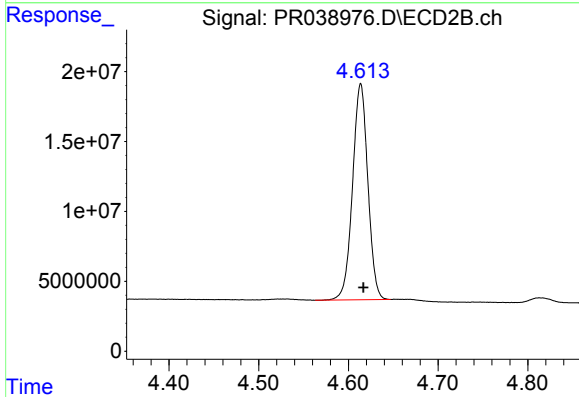
Volume Inj. : 2 µl
 Signal #1 Phase : ZB-MR1 Signal #2 Phase: ZB-MR2
 Signal #1 Info : 30Mx0.32mmx 0.50µ Signal #2 Info : 30M x 0.32mm x 0.25µm



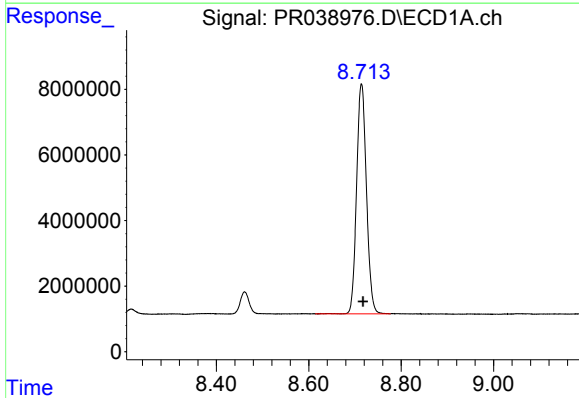


#1 Tetrachloro-m-xylene
 R.T.: 3.769 min
 Delta R.T.: 0.000 min
 Response: 51846897
 Conc: 52.85 ng/ml

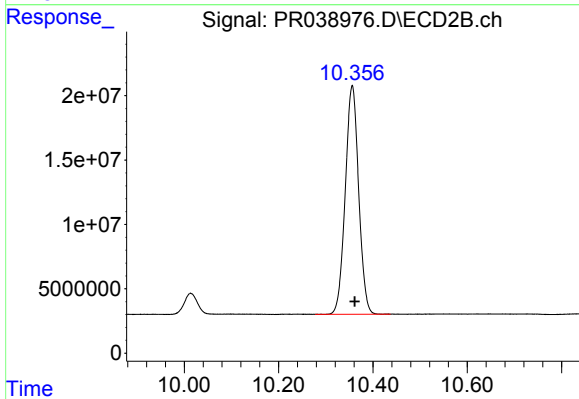
Instrument :
 ECD_R
 ClientSampleId :
 AR1660CCC500



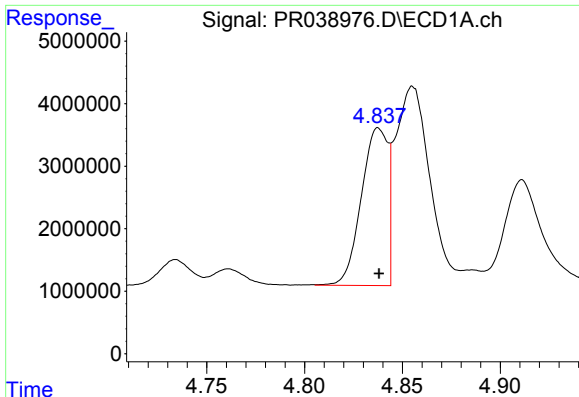
#1 Tetrachloro-m-xylene
 R.T.: 4.614 min
 Delta R.T.: -0.003 min
 Response: 183068628
 Conc: 51.50 ng/ml



#2 Decachlorobiphenyl
 R.T.: 8.714 min
 Delta R.T.: -0.003 min
 Response: 103617094
 Conc: 44.06 ng/ml



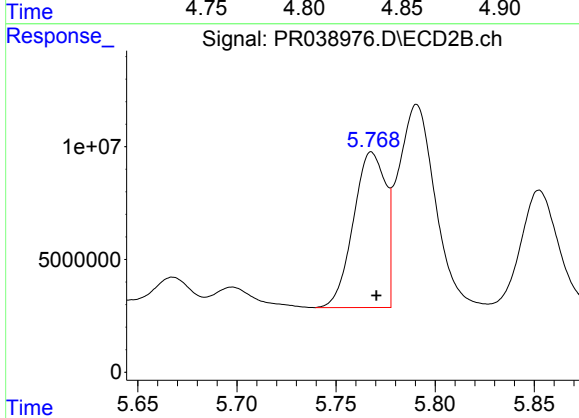
#2 Decachlorobiphenyl
 R.T.: 10.356 min
 Delta R.T.: -0.005 min
 Response: 349887167
 Conc: 48.18 ng/ml



#3 AR-1016-1

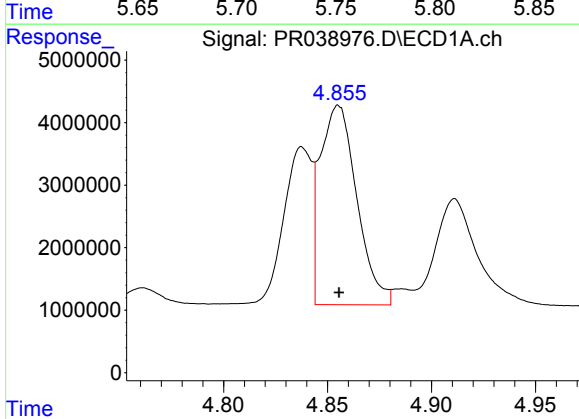
R.T.: 4.838 min
 Delta R.T.: 0.000 min
 Response: 23597007
 Conc: 486.09 ng/ml

Instrument :
 ECD_R
 ClientSampleId :
 AR1660CCC500



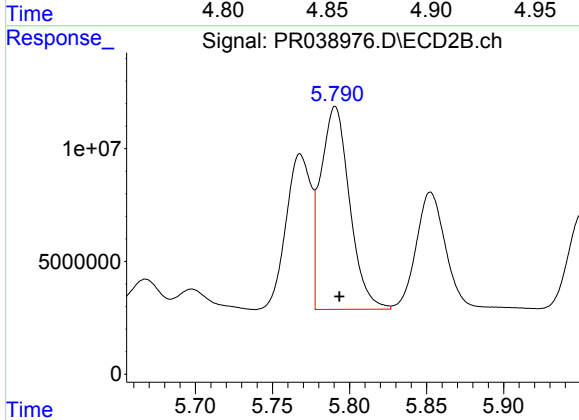
#3 AR-1016-1

R.T.: 5.768 min
 Delta R.T.: -0.003 min
 Response: 77830964
 Conc: 456.12 ng/ml



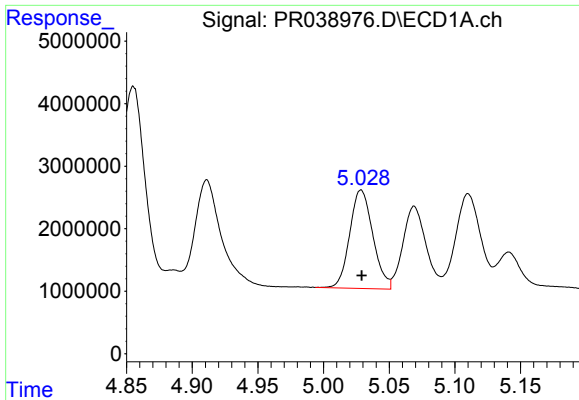
#4 AR-1016-2

R.T.: 4.855 min
 Delta R.T.: 0.000 min
 Response: 39117878
 Conc: 513.77 ng/ml



#4 AR-1016-2

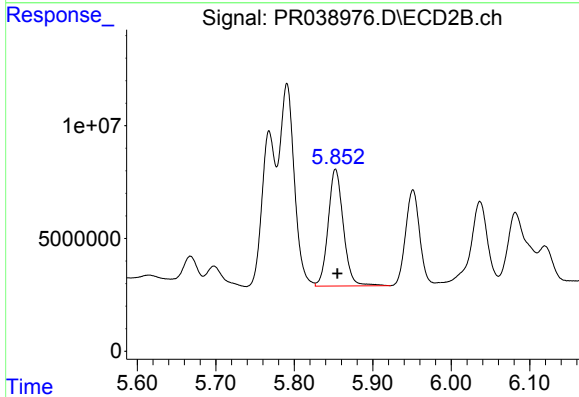
R.T.: 5.791 min
 Delta R.T.: -0.003 min
 Response: 117532384
 Conc: 479.37 ng/ml



#5 AR-1016-3

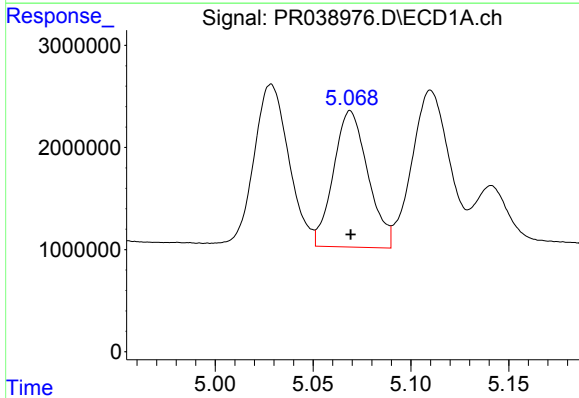
R.T.: 5.029 min
 Delta R.T.: 0.000 min
 Response: 19358420
 Conc: 507.29 ng/ml

Instrument :
 ECD_R
 ClientSampleId :
 AR1660CCC500



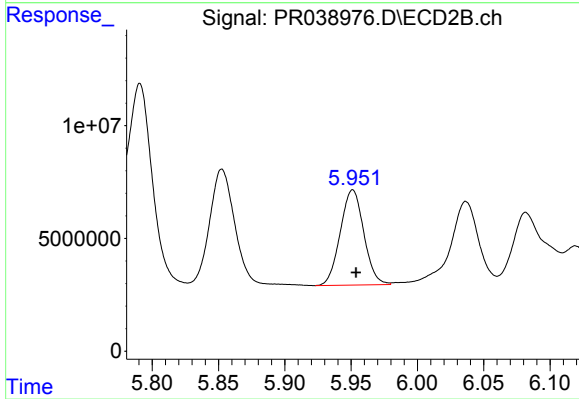
#5 AR-1016-3

R.T.: 5.853 min
 Delta R.T.: -0.002 min
 Response: 69612518
 Conc: 455.62 ng/ml



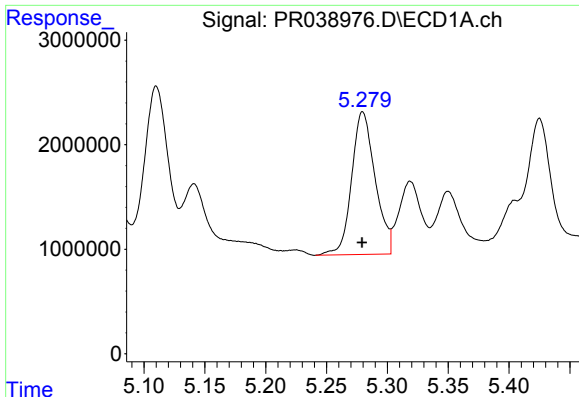
#6 AR-1016-4

R.T.: 5.069 min
 Delta R.T.: 0.000 min
 Response: 16379963
 Conc: 511.53 ng/ml



#6 AR-1016-4

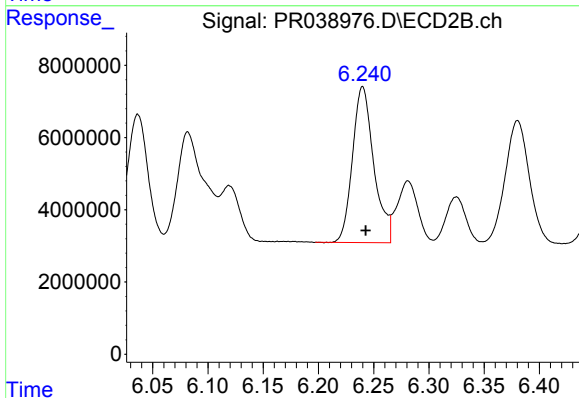
R.T.: 5.951 min
 Delta R.T.: -0.003 min
 Response: 52211460
 Conc: 432.72 ng/ml



#7 AR-1016-5

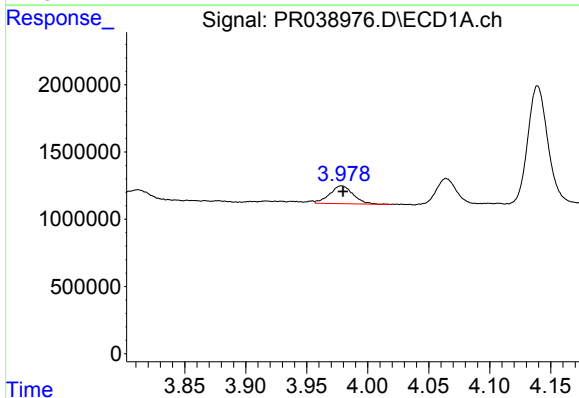
R.T.: 5.280 min
 Delta R.T.: 0.000 min
 Response: 18340551
 Conc: 423.18 ng/ml

Instrument :
 ECD_R
 ClientSampleId :
 AR1660CCC500



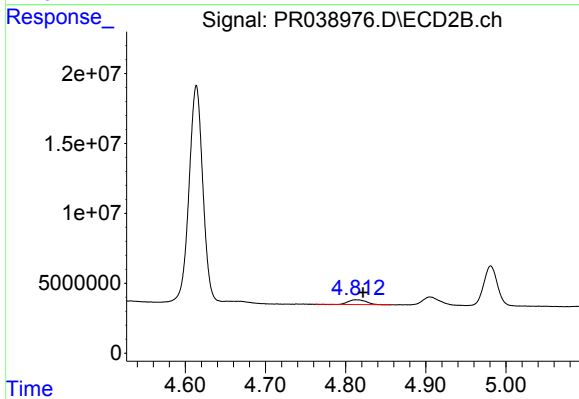
#7 AR-1016-5

R.T.: 6.240 min
 Delta R.T.: -0.003 min
 Response: 57997989
 Conc: 450.69 ng/ml



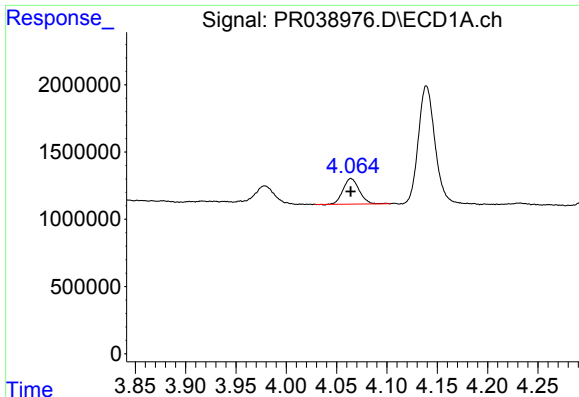
#8 AR-1221-1

R.T.: 3.979 min
 Delta R.T.: -0.001 min
 Response: 1767004
 Conc: 163.97 ng/ml



#8 AR-1221-1

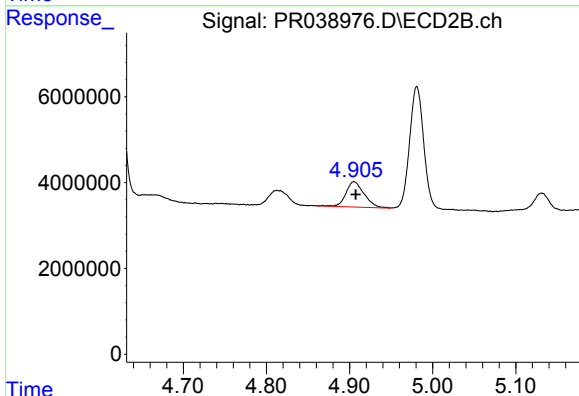
R.T.: 4.813 min
 Delta R.T.: -0.009 min
 Response: 5342907
 Conc: 142.74 ng/ml



#9 AR-1221-2

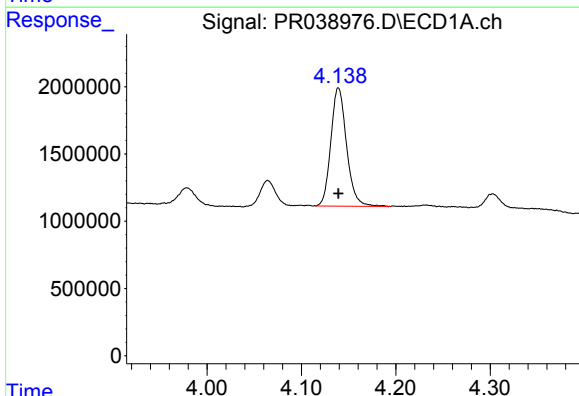
R.T.: 4.064 min
 Delta R.T.: 0.000 min
 Response: 2123098
 Conc: 244.87 ng/ml

Instrument :
 ECD_R
 ClientSampleId :
 AR1660CCC500



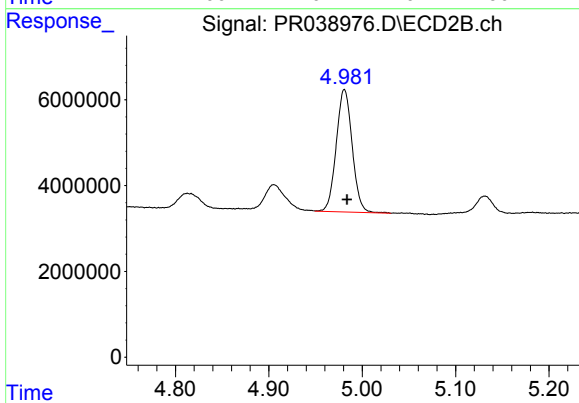
#9 AR-1221-2

R.T.: 4.905 min
 Delta R.T.: -0.002 min
 Response: 8949230
 Conc: 303.68 ng/ml



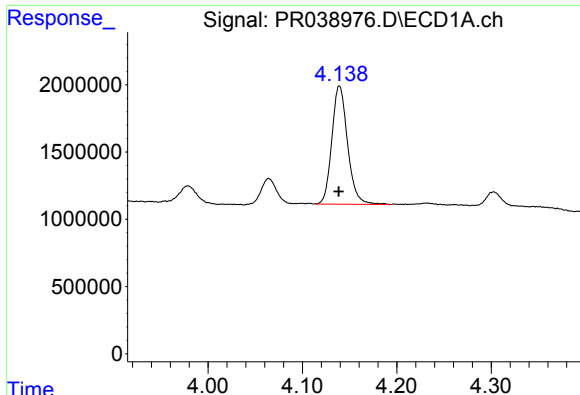
#10 AR-1221-3

R.T.: 4.139 min
 Delta R.T.: 0.000 min
 Response: 10192300
 Conc: 352.83 ng/ml



#10 AR-1221-3

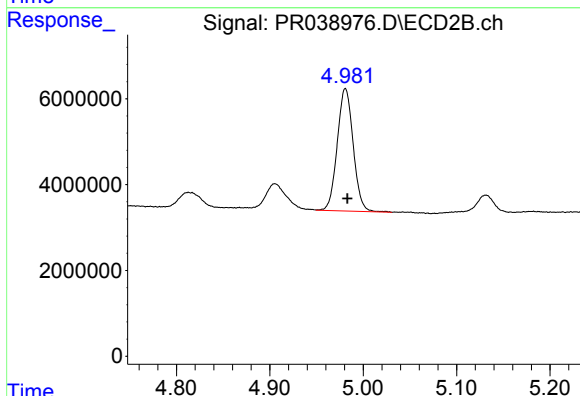
R.T.: 4.981 min
 Delta R.T.: -0.003 min
 Response: 33817675
 Conc: 357.26 ng/ml



#11 AR-1232-1

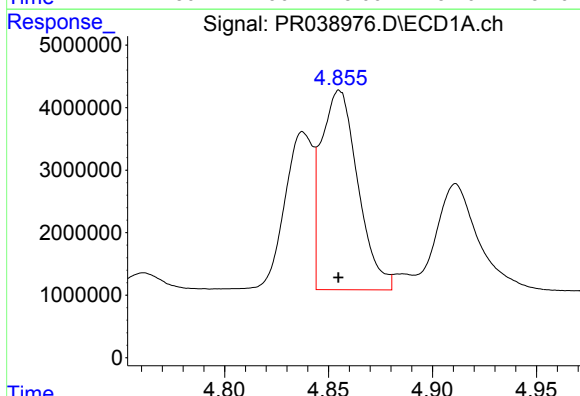
R.T.: 4.139 min
 Delta R.T.: 0.000 min
 Response: 10192300
 Conc: 394.26 ng/ml

Instrument :
 ECD_R
 ClientSampleId :
 AR1660CCC500



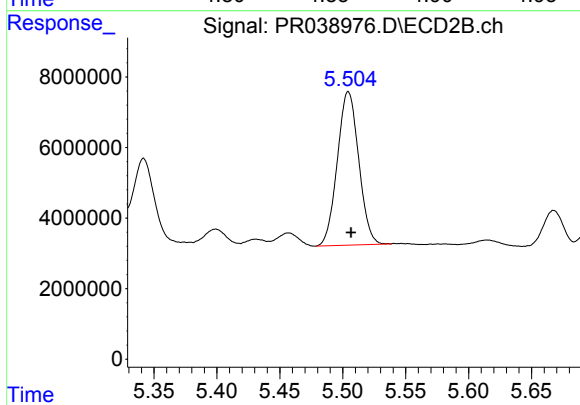
#11 AR-1232-1

R.T.: 4.981 min
 Delta R.T.: -0.002 min
 Response: 33817675
 Conc: 408.41 ng/ml



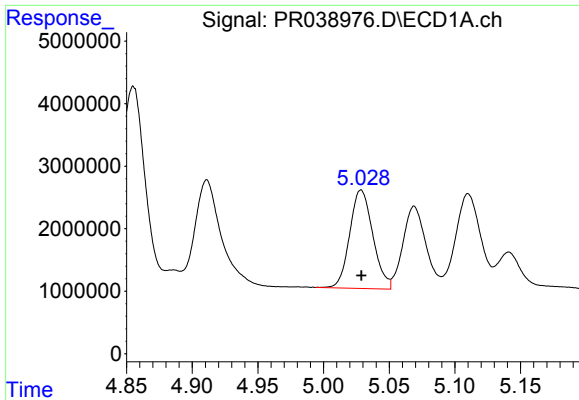
#12 AR-1232-2

R.T.: 4.855 min
 Delta R.T.: 0.000 min
 Response: 39117878
 Conc: 1189.88 ng/ml



#12 AR-1232-2

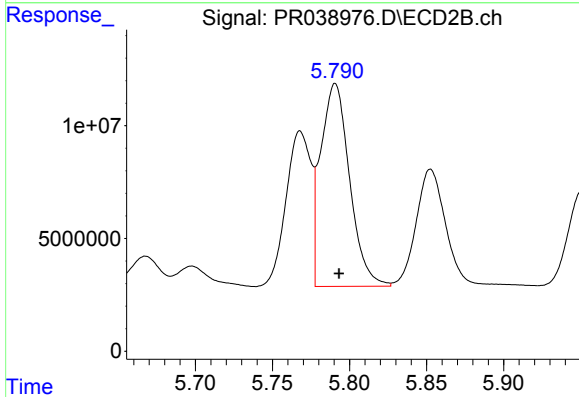
R.T.: 5.504 min
 Delta R.T.: -0.002 min
 Response: 51517459
 Conc: 1135.63 ng/ml



#13 AR-1232-3

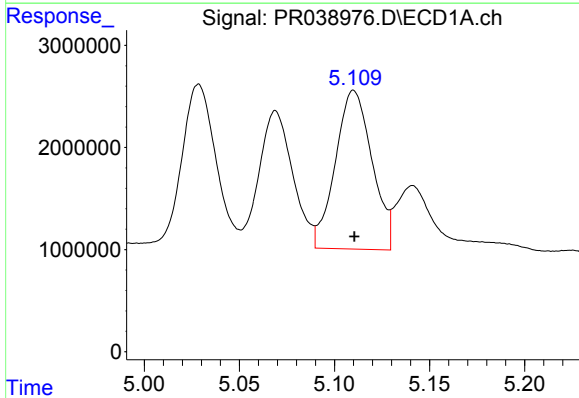
R.T.: 5.029 min
Delta R.T.: 0.000 min
Response: 19358420
Conc: 1226.89 ng/ml

Instrument :
ECD_R
ClientSampleId :
AR1660CCC500



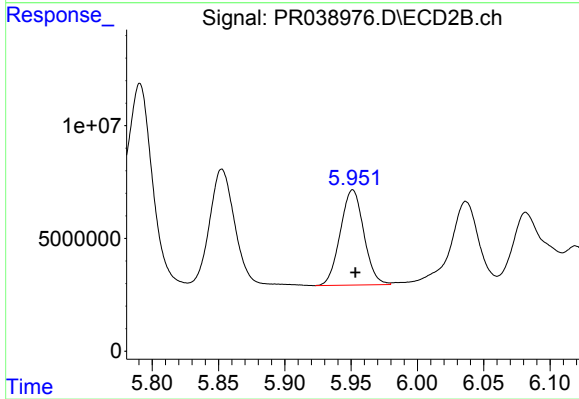
#13 AR-1232-3

R.T.: 5.791 min
Delta R.T.: -0.002 min
Response: 117532384
Conc: 1156.73 ng/ml



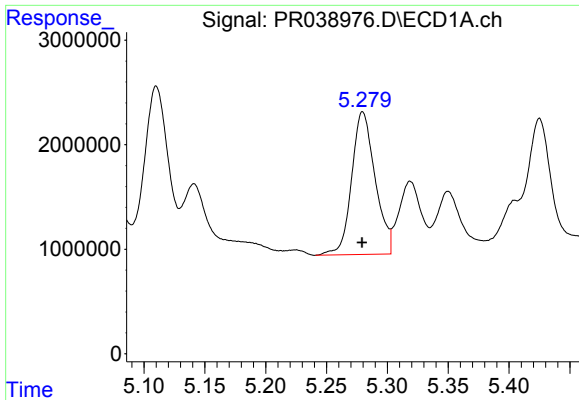
#14 AR-1232-4

R.T.: 5.110 min
Delta R.T.: 0.000 min
Response: 20882799
Conc: 1438.16 ng/ml



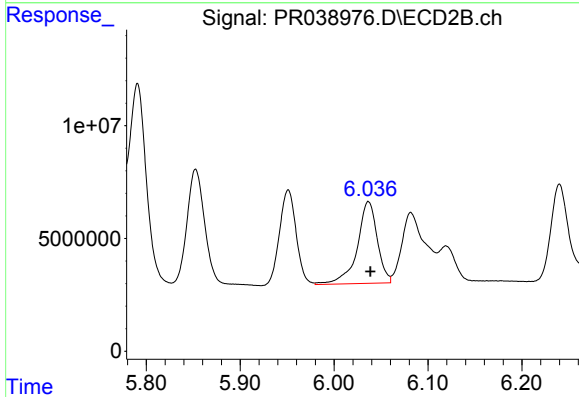
#14 AR-1232-4

R.T.: 5.951 min
Delta R.T.: -0.002 min
Response: 52211460
Conc: 1046.34 ng/ml

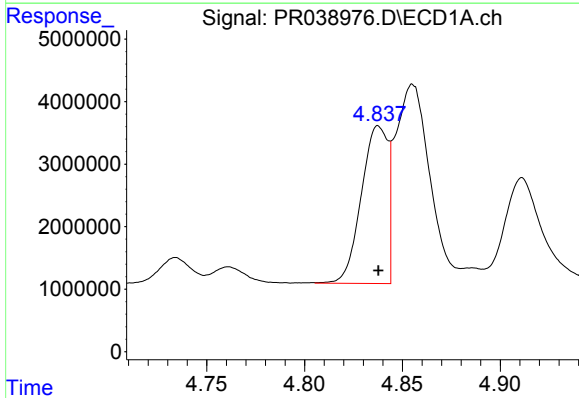


#15 AR-1232-5
 R.T.: 5.280 min
 Delta R.T.: 0.000 min
 Response: 18340551
 Conc: 1101.03 ng/ml

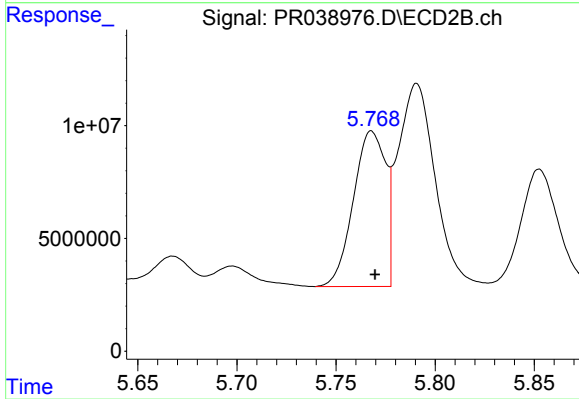
Instrument :
 ECD_R
ClientSampleId :
 AR1660CCC500



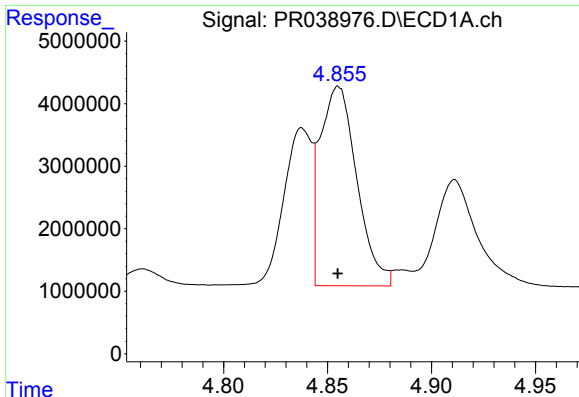
#15 AR-1232-5
 R.T.: 6.037 min
 Delta R.T.: -0.002 min
 Response: 53976390
 Conc: 1440.10 ng/ml



#16 AR-1242-1
 R.T.: 4.838 min
 Delta R.T.: 0.000 min
 Response: 23597007
 Conc: 586.02 ng/ml



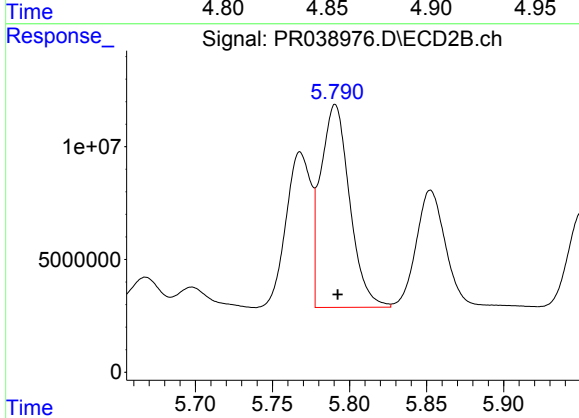
#16 AR-1242-1
 R.T.: 5.768 min
 Delta R.T.: -0.002 min
 Response: 77830964
 Conc: 546.12 ng/ml



#17 AR-1242-2

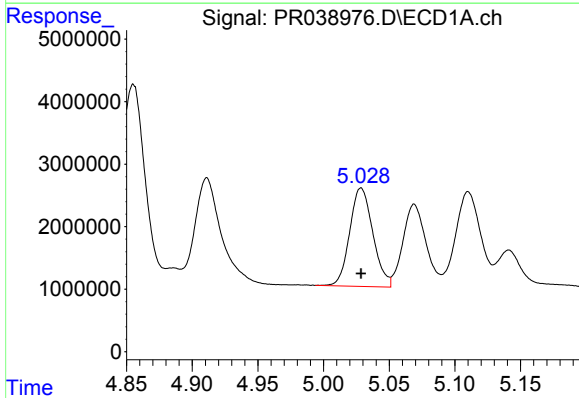
R.T.: 4.855 min
Delta R.T.: 0.000 min
Response: 39117878
Conc: 582.22 ng/ml

Instrument :
ECD_R
ClientSampleId :
AR1660CCC500



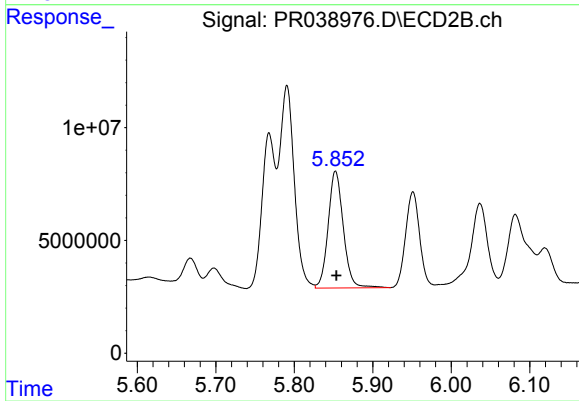
#17 AR-1242-2

R.T.: 5.791 min
Delta R.T.: -0.002 min
Response: 117532384
Conc: 571.52 ng/ml



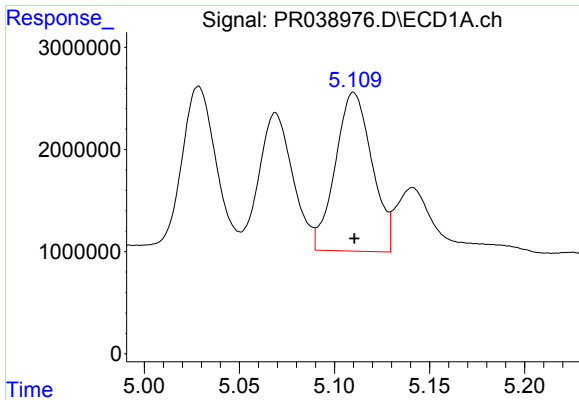
#18 AR-1242-3

R.T.: 5.029 min
Delta R.T.: 0.000 min
Response: 19358420
Conc: 583.02 ng/ml



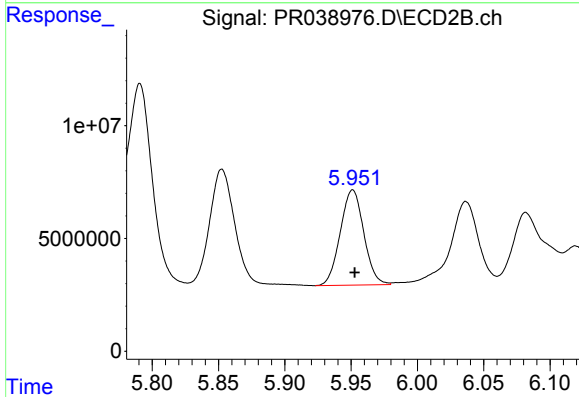
#18 AR-1242-3

R.T.: 5.853 min
Delta R.T.: -0.001 min
Response: 69612518
Conc: 550.93 ng/ml

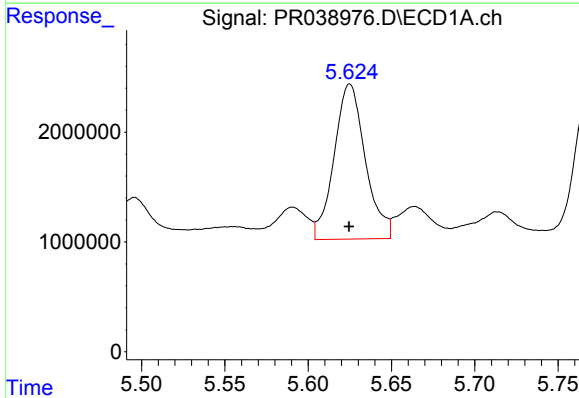


#19 AR-1242-4
 R.T.: 5.110 min
 Delta R.T.: 0.000 min
 Response: 20882799
 Conc: 624.07 ng/ml

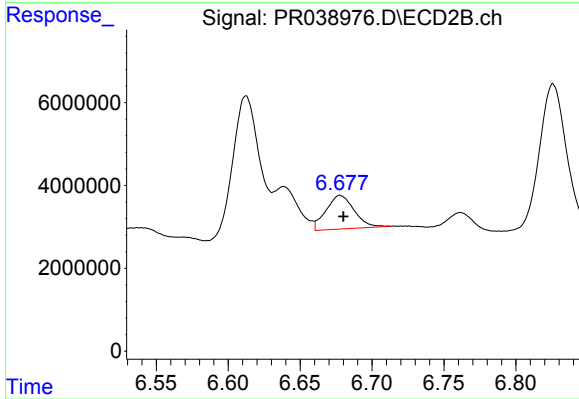
Instrument :
 ECD_R
ClientSampleId :
 AR1660CCC500



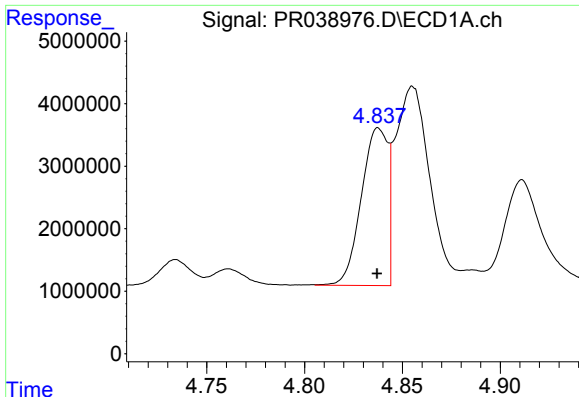
#19 AR-1242-4
 R.T.: 5.951 min
 Delta R.T.: -0.002 min
 Response: 52211460
 Conc: 510.57 ng/ml



#20 AR-1242-5
 R.T.: 5.625 min
 Delta R.T.: 0.000 min
 Response: 18427859
 Conc: 382.58 ng/ml



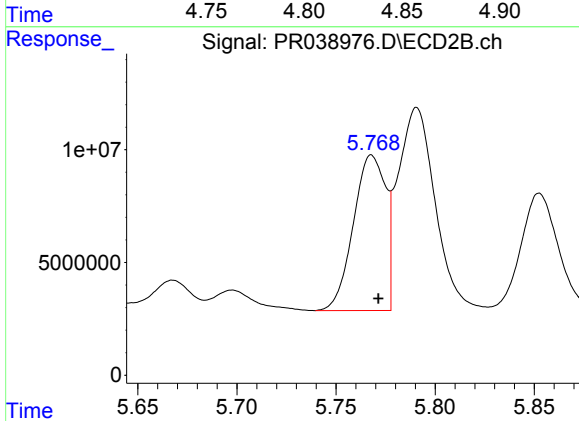
#20 AR-1242-5
 R.T.: 6.678 min
 Delta R.T.: -0.002 min
 Response: 11081810
 Conc: 85.00 ng/ml



#21 AR-1248-1

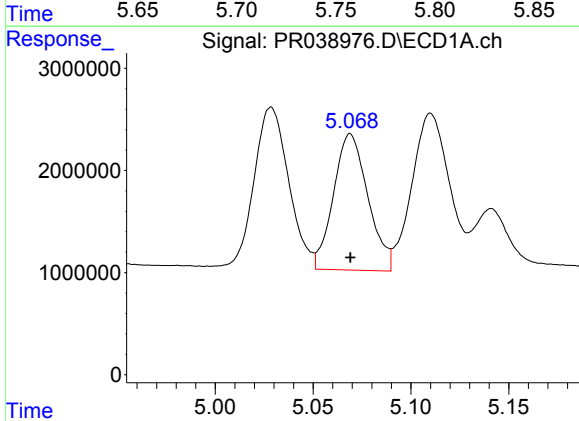
R.T.: 4.838 min
 Delta R.T.: 0.000 min
 Response: 23597007
 Conc: 664.04 ng/ml

Instrument :
 ECD_R
 ClientSampleId :
 AR1660CCC500



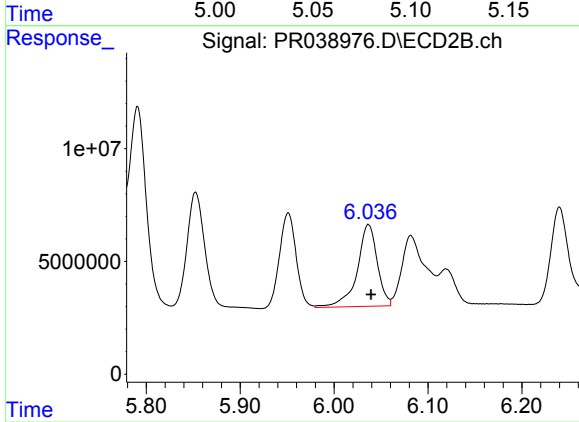
#21 AR-1248-1

R.T.: 5.768 min
 Delta R.T.: -0.003 min
 Response: 77830964
 Conc: 651.77 ng/ml



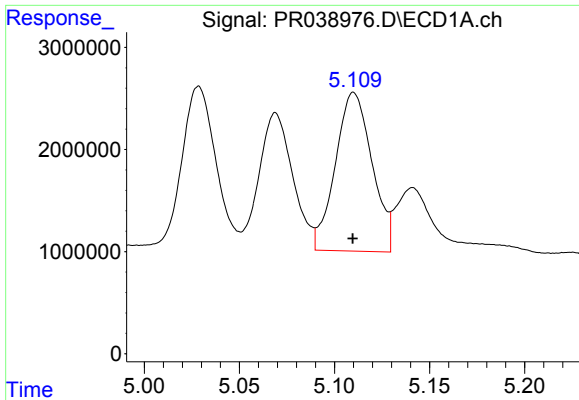
#22 AR-1248-2

R.T.: 5.069 min
 Delta R.T.: 0.000 min
 Response: 16379963
 Conc: 322.87 ng/ml



#22 AR-1248-2

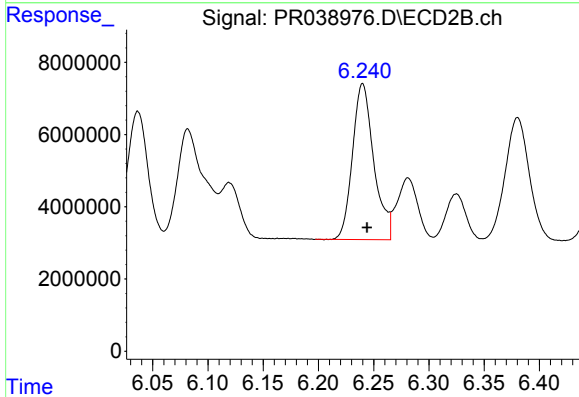
R.T.: 6.037 min
 Delta R.T.: -0.003 min
 Response: 53976390
 Conc: 329.16 ng/ml



#23 AR-1248-3

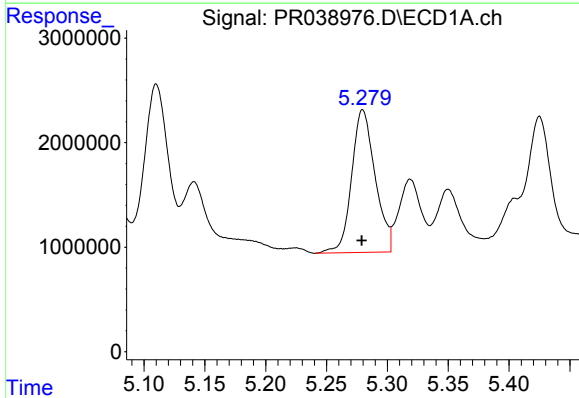
R.T.: 5.110 min
 Delta R.T.: 0.000 min
 Response: 20882799
 Conc: 394.70 ng/ml

Instrument :
 ECD_R
 ClientSampleId :
 AR1660CCC500



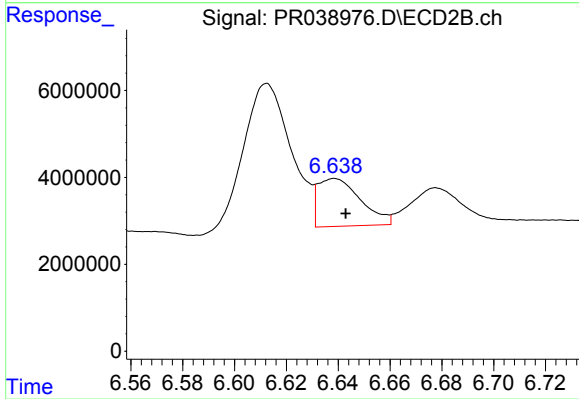
#23 AR-1248-3

R.T.: 6.240 min
 Delta R.T.: -0.004 min
 Response: 57997989
 Conc: 298.29 ng/ml



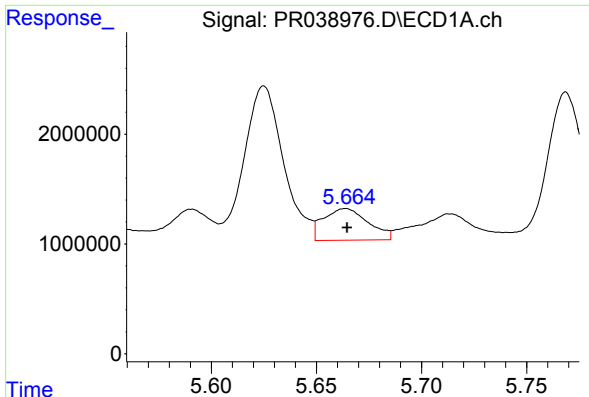
#24 AR-1248-4

R.T.: 5.280 min
 Delta R.T.: 0.000 min
 Response: 18340551
 Conc: 276.63 ng/ml



#24 AR-1248-4

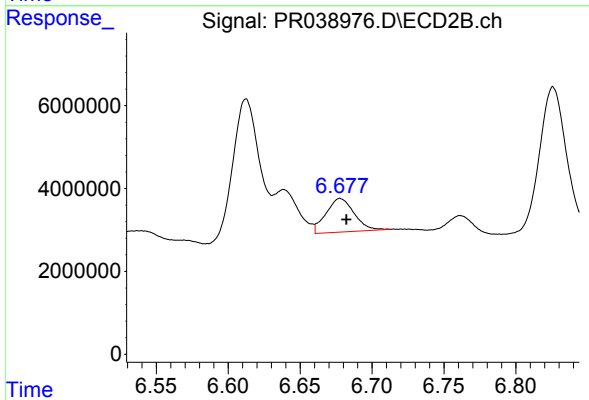
R.T.: 6.639 min
 Delta R.T.: -0.004 min
 Response: 12639727
 Conc: 51.45 ng/ml



#25 AR-1248-5

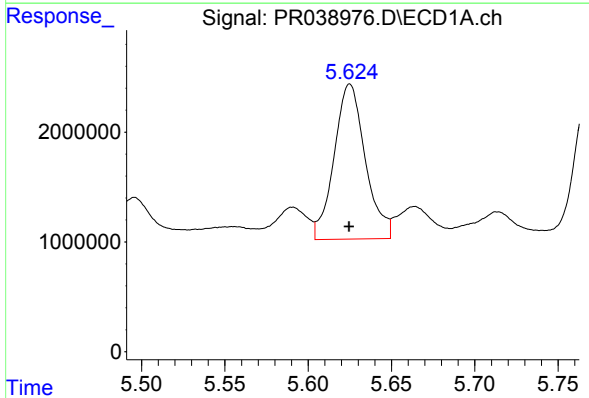
R.T.: 5.664 min
 Delta R.T.: 0.000 min
 Response: 4275306
 Conc: 58.45 ng/ml

Instrument :
 ECD_R
 ClientSampleId :
 AR1660CCC500



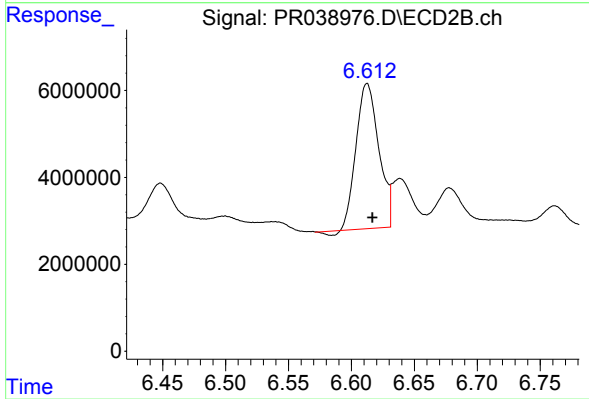
#25 AR-1248-5

R.T.: 6.678 min
 Delta R.T.: -0.004 min
 Response: 11081810
 Conc: 47.29 ng/ml



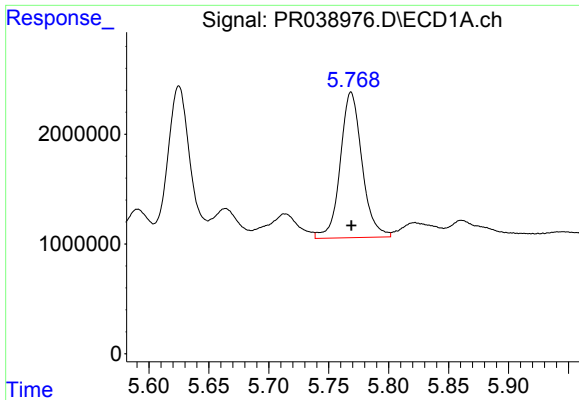
#26 AR-1254-1

R.T.: 5.625 min
 Delta R.T.: 0.000 min
 Response: 18427859
 Conc: 194.78 ng/ml



#26 AR-1254-1

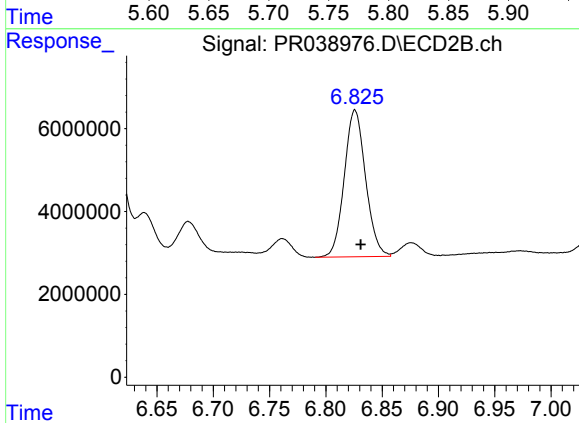
R.T.: 6.612 min
 Delta R.T.: -0.004 min
 Response: 41723703
 Conc: 204.61 ng/ml



#27 AR-1254-2

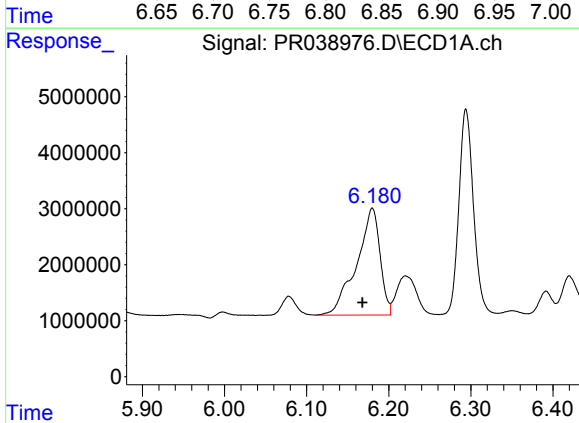
R.T.: 5.769 min
 Delta R.T.: 0.000 min
 Response: 16732343
 Conc: 199.33 ng/ml

Instrument :
 ECD_R
ClientSampled :
 AR1660CCC500



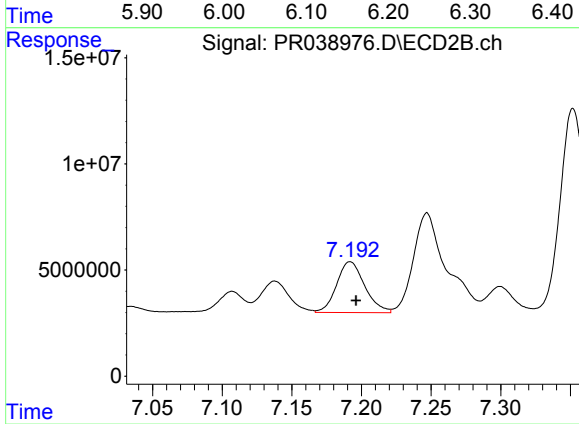
#27 AR-1254-2

R.T.: 6.826 min
 Delta R.T.: -0.005 min
 Response: 46667156
 Conc: 142.72 ng/ml



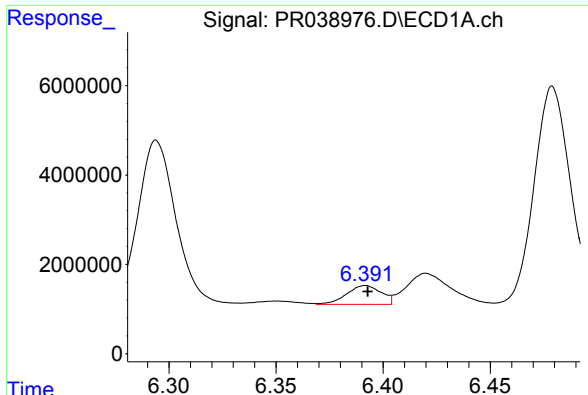
#28 AR-1254-3

R.T.: 6.180 min
 Delta R.T.: 0.012 min
 Response: 37894306
 Conc: 256.39 ng/ml



#28 AR-1254-3

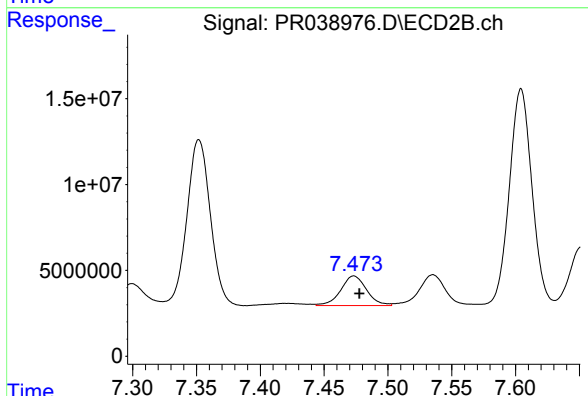
R.T.: 7.192 min
 Delta R.T.: -0.004 min
 Response: 33581839
 Conc: 87.90 ng/ml



#29 AR-1254-4

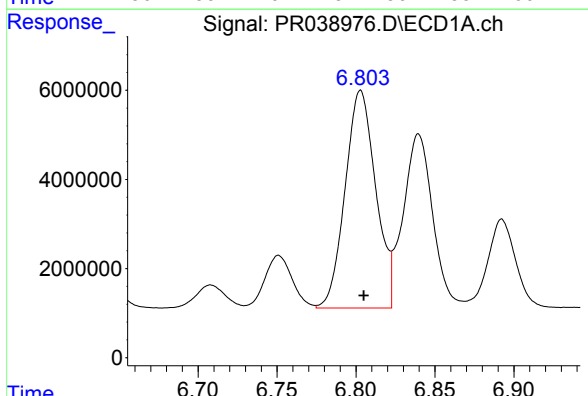
R.T.: 6.392 min
 Delta R.T.: -0.001 min
 Response: 4725265
 Conc: 41.49 ng/ml

Instrument :
 ECD_R
 ClientSampleId :
 AR1660CCC500



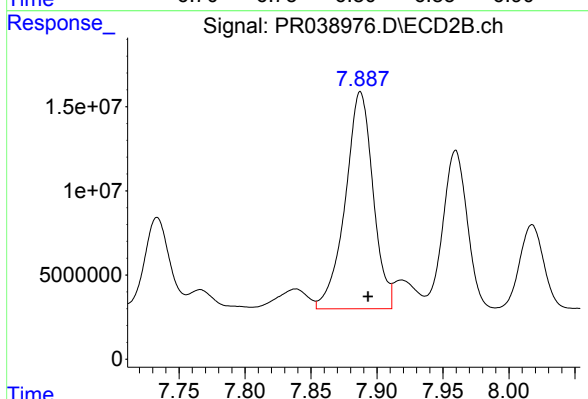
#29 AR-1254-4

R.T.: 7.473 min
 Delta R.T.: -0.004 min
 Response: 24303686
 Conc: 82.55 ng/ml



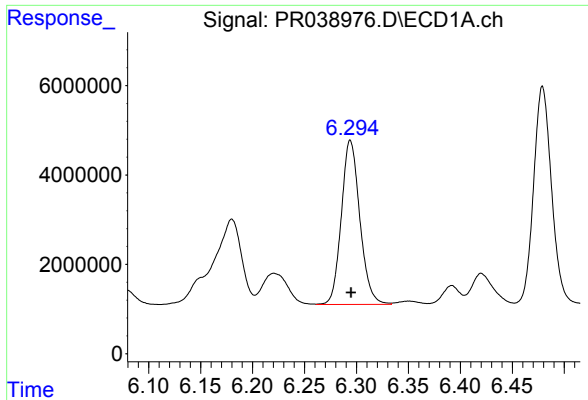
#30 AR-1254-5

R.T.: 6.803 min
 Delta R.T.: -0.002 min
 Response: 65903882
 Conc: 471.62 ng/ml



#30 AR-1254-5

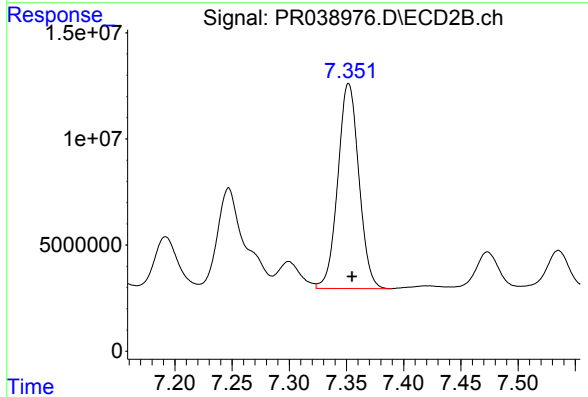
R.T.: 7.887 min
 Delta R.T.: -0.006 min
 Response: 189127628
 Conc: 580.28 ng/ml



#31 AR-1260-1

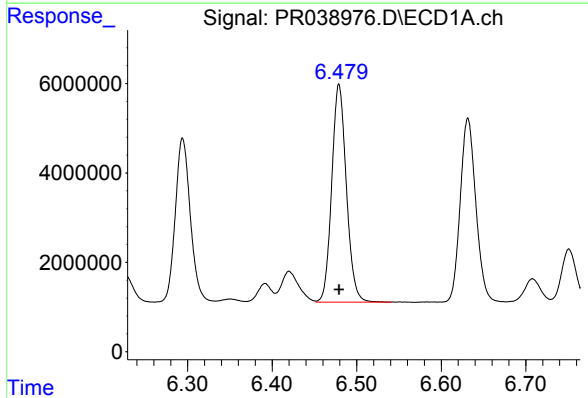
R.T.: 6.294 min
Delta R.T.: 0.000 min
Response: 45550467
Conc: 469.09 ng/ml

Instrument :
ECD_R
ClientSampleId :
AR1660CCC500



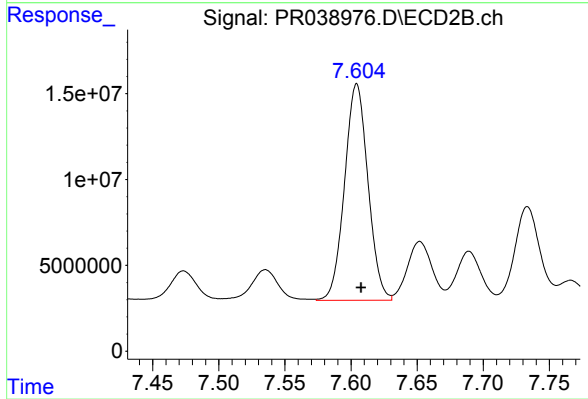
#31 AR-1260-1

R.T.: 7.352 min
Delta R.T.: -0.003 min
Response: 123780508
Conc: 454.81 ng/ml



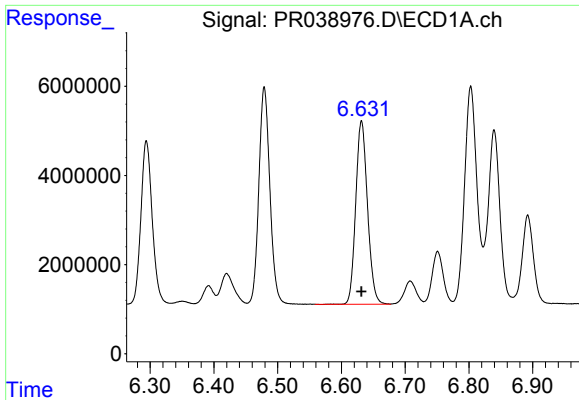
#32 AR-1260-2

R.T.: 6.479 min
Delta R.T.: 0.000 min
Response: 58651254
Conc: 465.72 ng/ml



#32 AR-1260-2

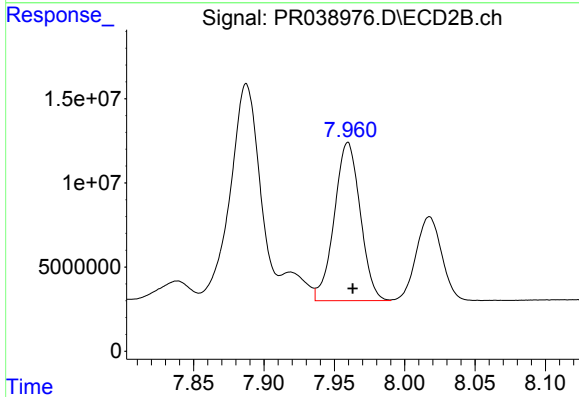
R.T.: 7.604 min
Delta R.T.: -0.003 min
Response: 155386473
Conc: 456.03 ng/ml



#33 AR-1260-3

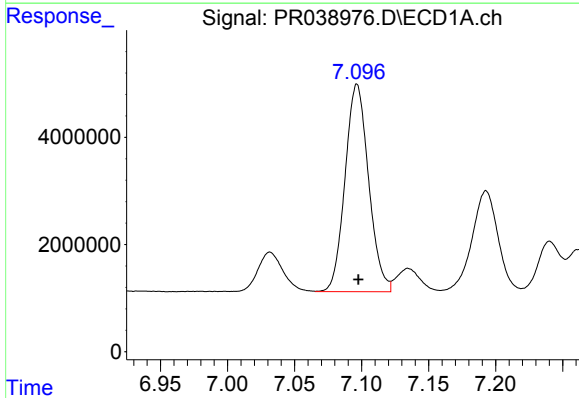
R.T.: 6.632 min
 Delta R.T.: 0.000 min
 Response: 52651730
 Conc: 463.48 ng/ml

Instrument :
 ECD_R
 ClientSampleId :
 AR1660CCC500



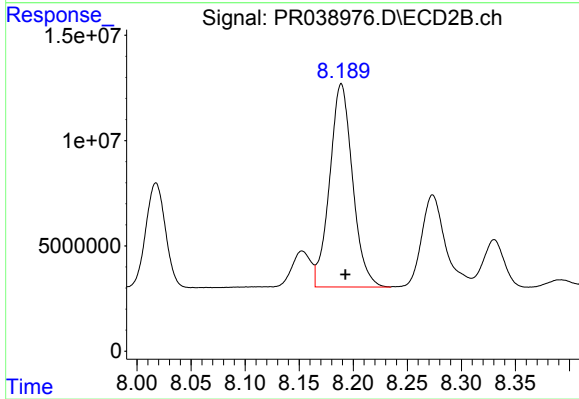
#33 AR-1260-3

R.T.: 7.960 min
 Delta R.T.: -0.003 min
 Response: 120712762
 Conc: 444.78 ng/ml



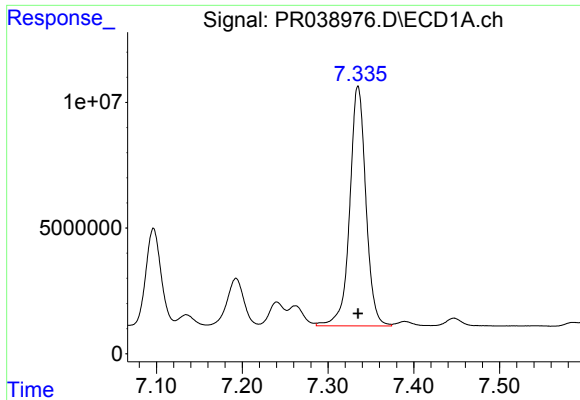
#34 AR-1260-4

R.T.: 7.097 min
 Delta R.T.: -0.001 min
 Response: 47348797
 Conc: 463.51 ng/ml



#34 AR-1260-4

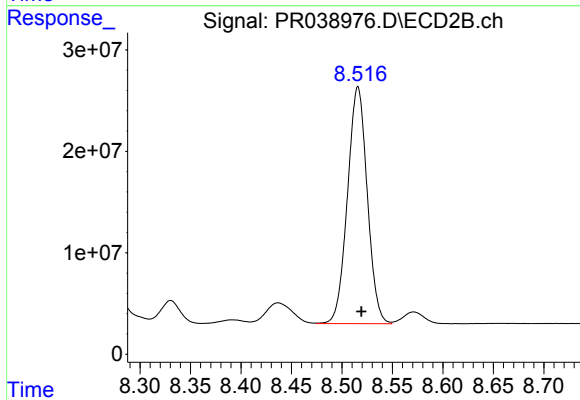
R.T.: 8.189 min
 Delta R.T.: -0.004 min
 Response: 142340682
 Conc: 439.30 ng/ml



#35 AR-1260-5

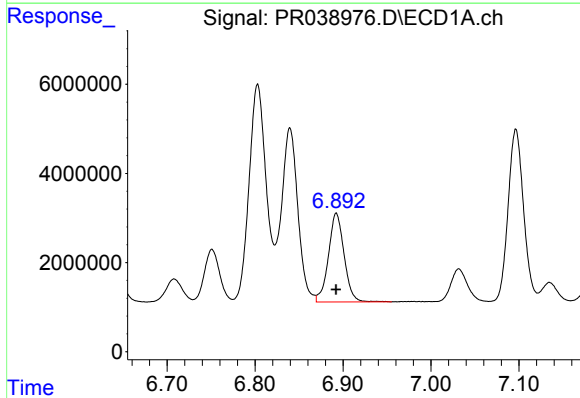
R.T.: 7.335 min
 Delta R.T.: 0.000 min
 Response: 124781520
 Conc: 473.40 ng/ml

Instrument :
 ECD_R
 ClientSampleId :
 AR1660CCC500



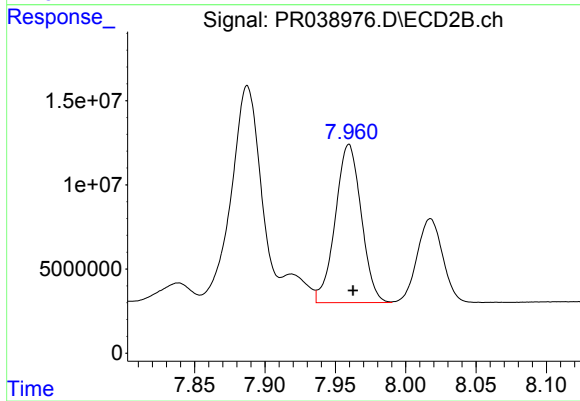
#35 AR-1260-5

R.T.: 8.516 min
 Delta R.T.: -0.003 min
 Response: 318327433
 Conc: 454.20 ng/ml



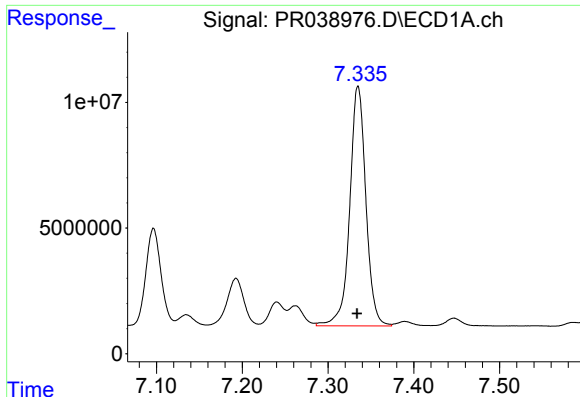
#36 AR-1262-1

R.T.: 6.892 min
 Delta R.T.: 0.000 min
 Response: 24621661
 Conc: 353.49 ng/ml



#36 AR-1262-1

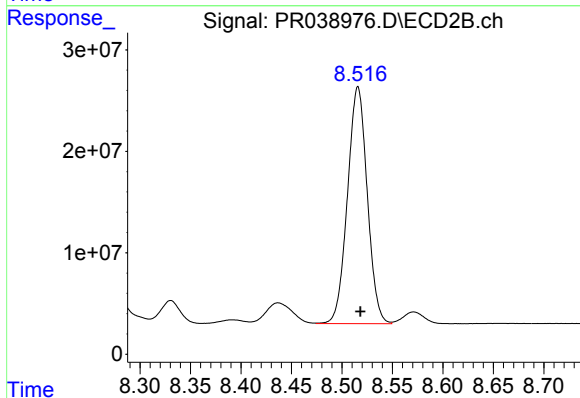
R.T.: 7.960 min
 Delta R.T.: -0.003 min
 Response: 120712762
 Conc: 253.73 ng/ml



#37 AR-1262-2

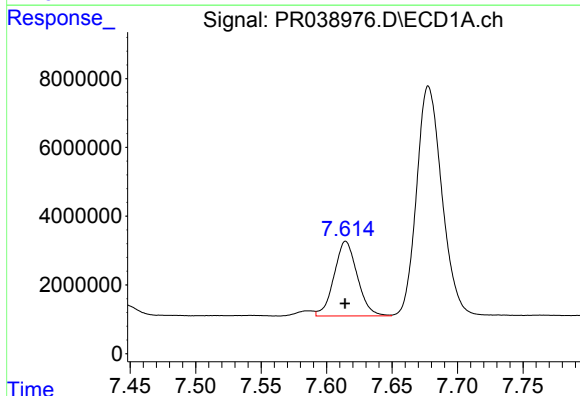
R.T.: 7.335 min
 Delta R.T.: 0.001 min
 Response: 124781520
 Conc: 351.37 ng/ml

Instrument :
 ECD_R
 ClientSampleId :
 AR1660CCC500



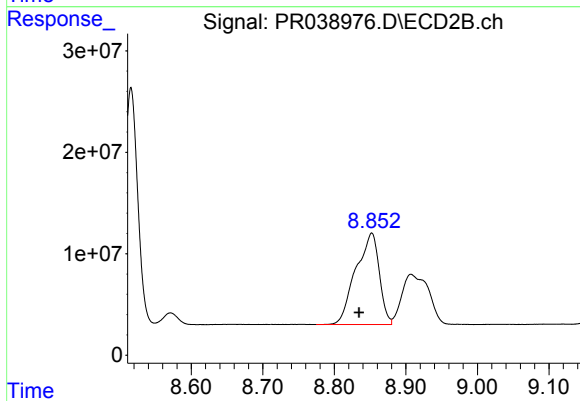
#37 AR-1262-2

R.T.: 8.516 min
 Delta R.T.: -0.003 min
 Response: 318327433
 Conc: 331.58 ng/ml



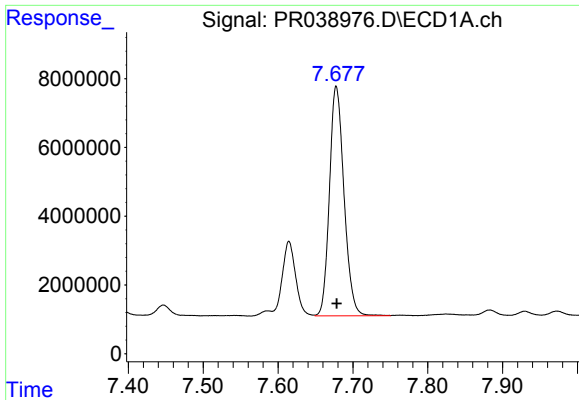
#38 AR-1262-3

R.T.: 7.615 min
 Delta R.T.: 0.000 min
 Response: 26865528
 Conc: 199.69 ng/ml



#38 AR-1262-3

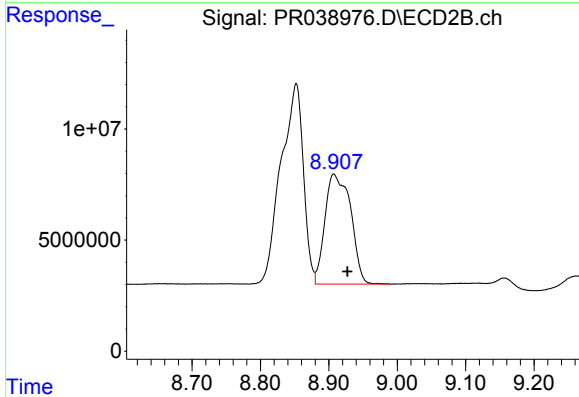
R.T.: 8.852 min
 Delta R.T.: 0.018 min
 Response: 205264193
 Conc: 321.39 ng/ml



#39 AR-1262-4

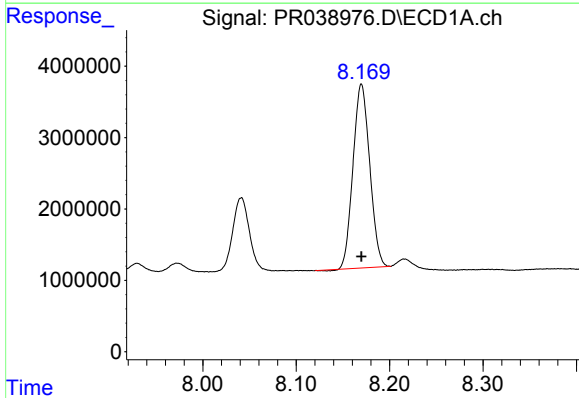
R.T.: 7.678 min
Delta R.T.: 0.000 min
Response: 90316694
Conc: 345.22 ng/ml

Instrument :
ECD_R
ClientSampleId :
AR1660CCC500



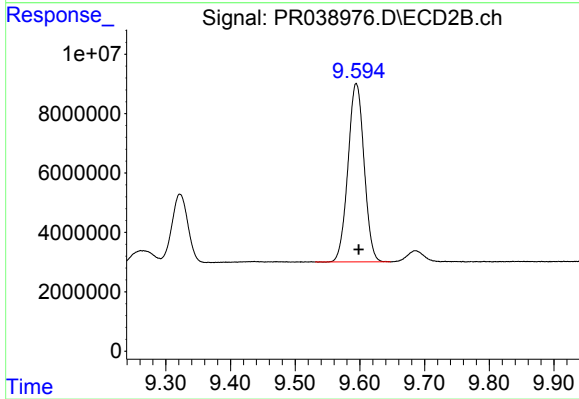
#39 AR-1262-4

R.T.: 8.907 min
Delta R.T.: -0.020 min
Response: 129316741
Conc: 267.81 ng/ml



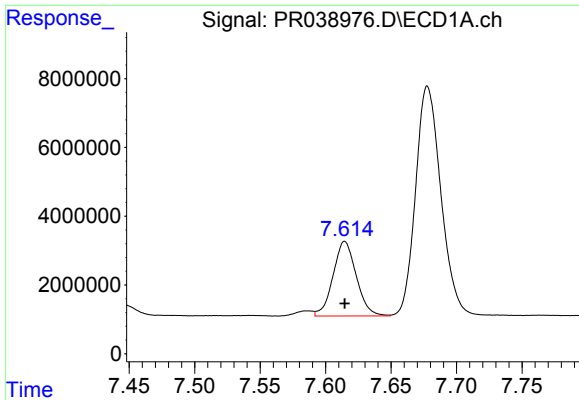
#40 AR-1262-5

R.T.: 8.170 min
Delta R.T.: 0.000 min
Response: 32008634
Conc: 253.26 ng/ml



#40 AR-1262-5

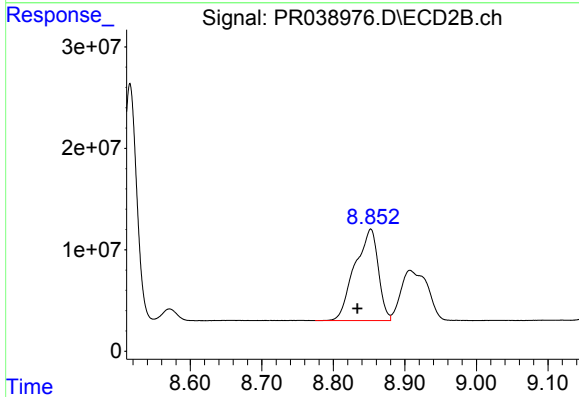
R.T.: 9.594 min
Delta R.T.: -0.004 min
Response: 103774842
Conc: 288.64 ng/ml



#41 AR-1268-1

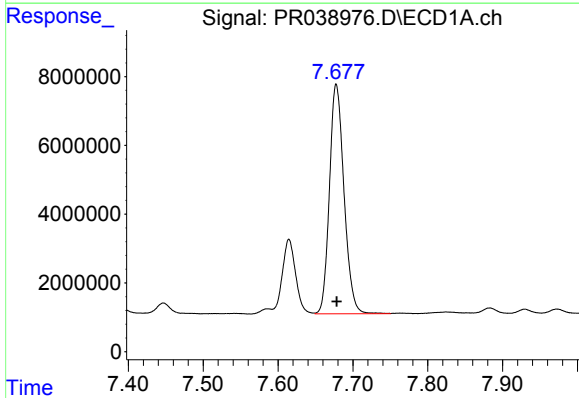
R.T.: 7.615 min
Delta R.T.: 0.000 min
Response: 26865528
Conc: 74.68 ng/ml

Instrument :
ECD_R
ClientSampleId :
AR1660CCC500



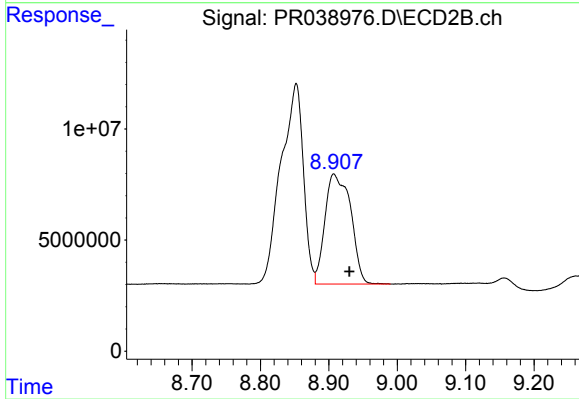
#41 AR-1268-1

R.T.: 8.852 min
Delta R.T.: 0.019 min
Response: 205264193
Conc: 205.21 ng/ml



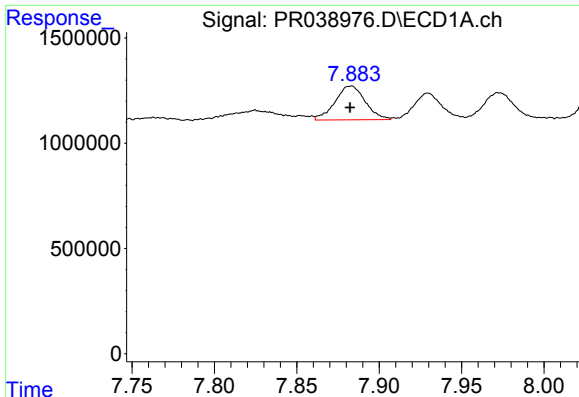
#42 AR-1268-2

R.T.: 7.678 min
Delta R.T.: 0.000 min
Response: 90316694
Conc: 270.11 ng/ml



#42 AR-1268-2

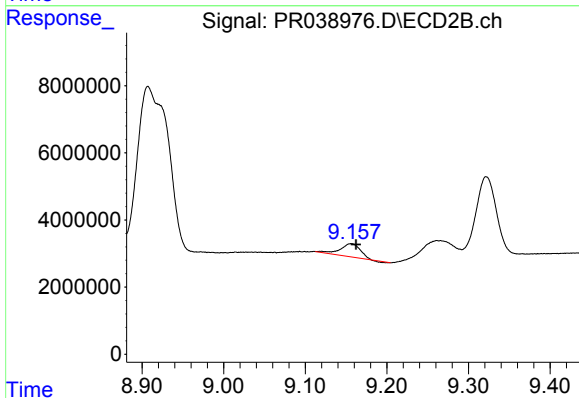
R.T.: 8.907 min
Delta R.T.: -0.023 min
Response: 129316741
Conc: 137.26 ng/ml



#43 AR-1268-3

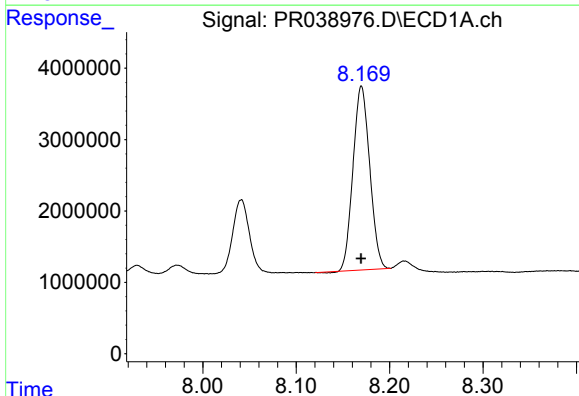
R.T.: 7.883 min
 Delta R.T.: 0.000 min
 Response: 2042316
 Conc: 7.44 ng/ml

Instrument :
 ECD_R
 ClientSampleId :
 AR1660CCC500



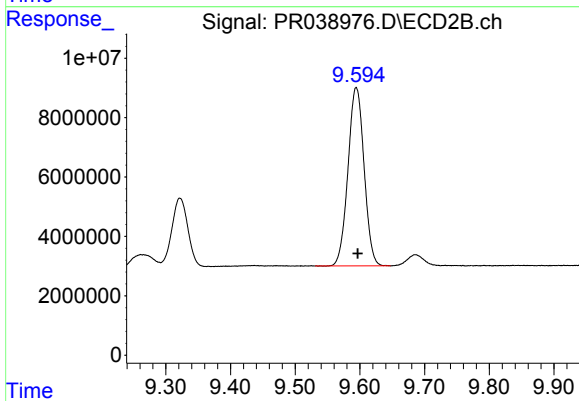
#43 AR-1268-3

R.T.: 9.156 min
 Delta R.T.: -0.006 min
 Response: 6563010
 Conc: 8.39 ng/ml



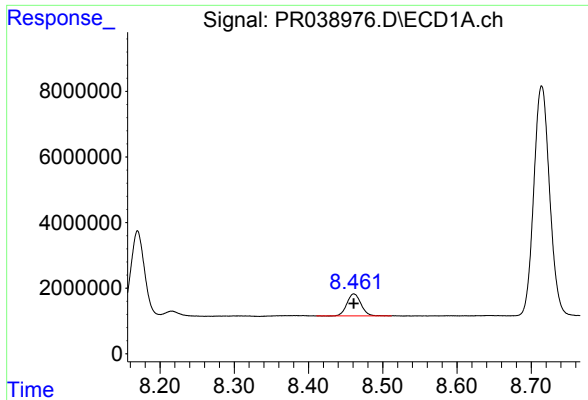
#44 AR-1268-4

R.T.: 8.170 min
 Delta R.T.: 0.000 min
 Response: 32008634
 Conc: 255.62 ng/ml



#44 AR-1268-4

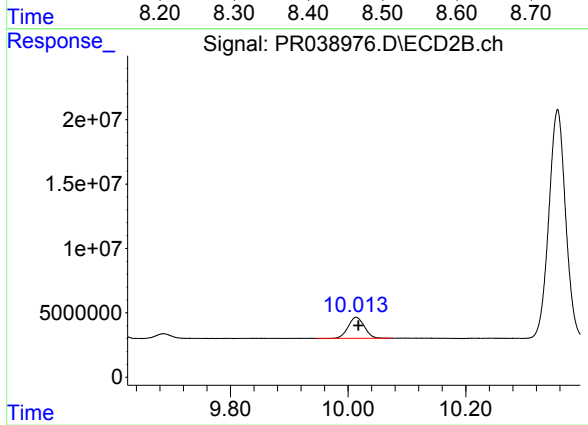
R.T.: 9.594 min
 Delta R.T.: -0.002 min
 Response: 103774842
 Conc: 290.11 ng/ml



#45 AR-1268-5

R.T.: 8.461 min
Delta R.T.: 0.000 min
Response: 8837994
Conc: 8.88 ng/ml

Instrument :
ECD_R
ClientSampleId :
AR1660CCC500



#45 AR-1268-5

R.T.: 10.014 min
Delta R.T.: -0.004 min
Response: 31159699
Conc: 10.85 ng/ml