

Data Path : \\TERASTORAGE\Terastorage\pestpcbsrv\HPCHEM1\ECD_R\Data\PR062918\
 Data File : PR029485.D
 Signal(s) : Signal #1: ECD1A.ch Signal #2: ECD2B.ch
 Acq On : 25 Jun 2018 11:55 am
 Operator : UA/SM
 Sample : J3246-03RE
 Misc :
 ALS Vial : 9 Sample Multiplier: 1

Instrument :
 ECD_R
 ClientSampled :

Integration File signal 1: autoint1.e
 Integration File signal 2: autoint2.e
 Quant Time: Jun 25 12:16:45 2018
 Quant Method : \\TERASTORAGE\Terastorage\pestpcbsrv\HPCHEM1\ECD_R\Method\PR062718.M
 Quant Title : GC EXTRACTABLES
 QLast Update : Sat Jun 23 08:41:26 2018
 Response via : Initial Calibration
 Integrator: ChemStation

Volume Inj. : 2 µl
 Signal #1 Phase : ZB-MR1 Signal #2 Phase: ZB-MR2
 Signal #1 Info : 30Mx0.32mmx 0.50µ Signal #2 Info : 30M x 0.32mm x 0.25µm

Compound	RT#1	RT#2	Resp#1	Resp#2	ng/ml	ng/ml

System Monitoring Compounds						
1) SA Tetrachlo...	4.568	3.719	447.2E6	829.7E6	19.432	17.551
2) SA Decachlor...	10.336	8.653	328.8E6	204.7E6	11.744	10.365
Target Compounds						
3) L1 AR-1016-1	5.451	4.555	41753430	42966422	72.637	33.330 #
4) L1 AR-1016-2	5.817	4.977	22090937	53740817	29.121	40.622 #
5) L1 AR-1016-3	5.888	5.087	49693817	52345324	77.990	37.839 #
6) L1 AR-1016-4	6.168	5.226	39861253	-5189734	66.013	N.D. #
7) L1 AR-1016-5	6.383	5.583	19621493	41836781	29.764	26.407
8) L2 AR-1221-1	4.743	3.935	17133343	1943336	62.888	3.476 #
9) L2 AR-1221-2	4.872	4.016	31481770	39468827	158.120	92.669 #
10) L2 AR-1221-3	4.923	4.132	8152245	98714445	12.984	72.792 #
11) L3 AR-1232-1	4.923	4.132	8152245	98714445	19.264	108.823 #
12) L3 AR-1232-2	5.451	4.977	41753430	53740817	182.635	102.224 #
13) L3 AR-1232-3	5.817	5.019	22090937	60215144	70.757	154.637 #
14) L3 AR-1232-4	5.888	5.583	49693817	41836781	192.942	57.210 #
15) L3 AR-1232-5	6.306	5.632	17425878	22540199	64.636	29.054 #
16) L4 AR-1242-1	5.451	4.580	41753430	60165428	104.954	63.485 #
17) L4 AR-1242-2	5.725	4.786	18944563	75588393	31.780	63.055 #
18) L4 AR-1242-3	5.817	4.821	22090937	44647357	41.422	23.081 #
19) L4 AR-1242-4	5.888	5.087	49693817	52345324	111.001	53.102 #
20) L4 AR-1242-5	6.168	5.226	39861253	-5189734	90.957	N.D. #
21) L5 AR-1248-1	6.009	5.019	10004169	60215144	13.739	39.717 #
22) L5 AR-1248-2	6.168	5.087	39861253	52345324	48.879	33.181 #
24) L5 AR-1248-4	6.617	5.583	-91285	41836781	N.D.	13.976 #
25) L5 AR-1248-5	6.791	5.632	31497038	22540199	32.392	10.569 #
26) L6 AR-1254-1	6.009	5.019	10004169	60215144	19.530	52.194 #
27) L6 AR-1254-2	6.791	5.743	31497038	45295584	21.401	15.879 #
28) L6 AR-1254-3	7.162	6.134	33595524	42061333	21.320	8.649 #
29) L6 AR-1254-4	7.440	6.339	9660253	5089271	7.660	1.352 #
30) L6 AR-1254-5	7.862	6.754	21808949	20044586	16.393	4.790 #
31) L7 AR-1260-1	7.320	6.246	1907768	18504221	1.554	5.584 #
32) L7 AR-1260-2	7.576	6.428	29371883	38717655	18.728	9.215 #
33) L7 AR-1260-3	7.934	6.754	7322931	20044586	6.005	4.855
34) L7 AR-1260-4	8.173	7.046	19691956	11437682	14.764	4.672 #
35) L7 AR-1260-5	8.485	7.285	24038555	28879661	8.179	5.188 #
36) L8 AR-1262-1	7.320	6.246	1907768	18504221	2.664	4.749 #
37) L8 AR-1262-2	7.576	6.428	29371883	38717655	16.973	8.022 #
38) L8 AR-1262-3	7.934	6.782	7322931	26146562	2.825	3.539 #
39) L8 AR-1262-4	8.173	7.046	19691956	11437682	8.498	2.246 #
40) L8 AR-1262-5	8.485	7.285	24038555	28879661	4.780	3.007 #
41) L9 AR-1268-1	8.808	7.566	11214430	12497726	3.019	2.398
42) L9 AR-1268-2	8.899	7.628	9719916	38435793	2.781	8.643 #

Data Path : \\TERASTORAGE\Terastorage\pestpcbsrv\HPCHEM1\ECD_R\Data\PR062918\
 Data File : PR029485.D
 Signal(s) : Signal #1: ECD1A.ch Signal #2: ECD2B.ch
 Acq On : 25 Jun 2018 11:55 am
 Operator : UA/SM
 Sample : J3246-03RE
 Misc :
 ALS Vial : 9 Sample Multiplier: 1

Instrument :
 ECD_R
 ClientSampleId :

Integration File signal 1: autoint1.e
 Integration File signal 2: autoint2.e
 Quant Time: Jun 25 12:16:45 2018
 Quant Method : \\TERASTORAGE\Terastorage\pestpcbsrv\HPCHEM1\ECD_R\Method\PR062718.M
 Quant Title : GC EXTRACTABLES
 QLast Update : Sat Jun 23 08:41:26 2018
 Response via : Initial Calibration
 Integrator: ChemStation

Volume Inj. : 2 µl
 Signal #1 Phase : ZB-MR1 Signal #2 Phase: ZB-MR2
 Signal #1 Info : 30Mx0.32mmx 0.50µ Signal #2 Info : 30M x 0.32mm x 0.25µm

	Compound	RT#1	RT#2	Resp#1	Resp#2	ng/ml	ng/ml
43)	L9 AR-1268-3	9.135	7.830	5986120	14398796	1.972	4.626 #
44)	L9 AR-1268-4	9.565	8.118	8546094	14401613	6.673	12.053 #
45)	L9 AR-1268-5	9.989	8.404	8492184	8177014	0.918	1.237 #

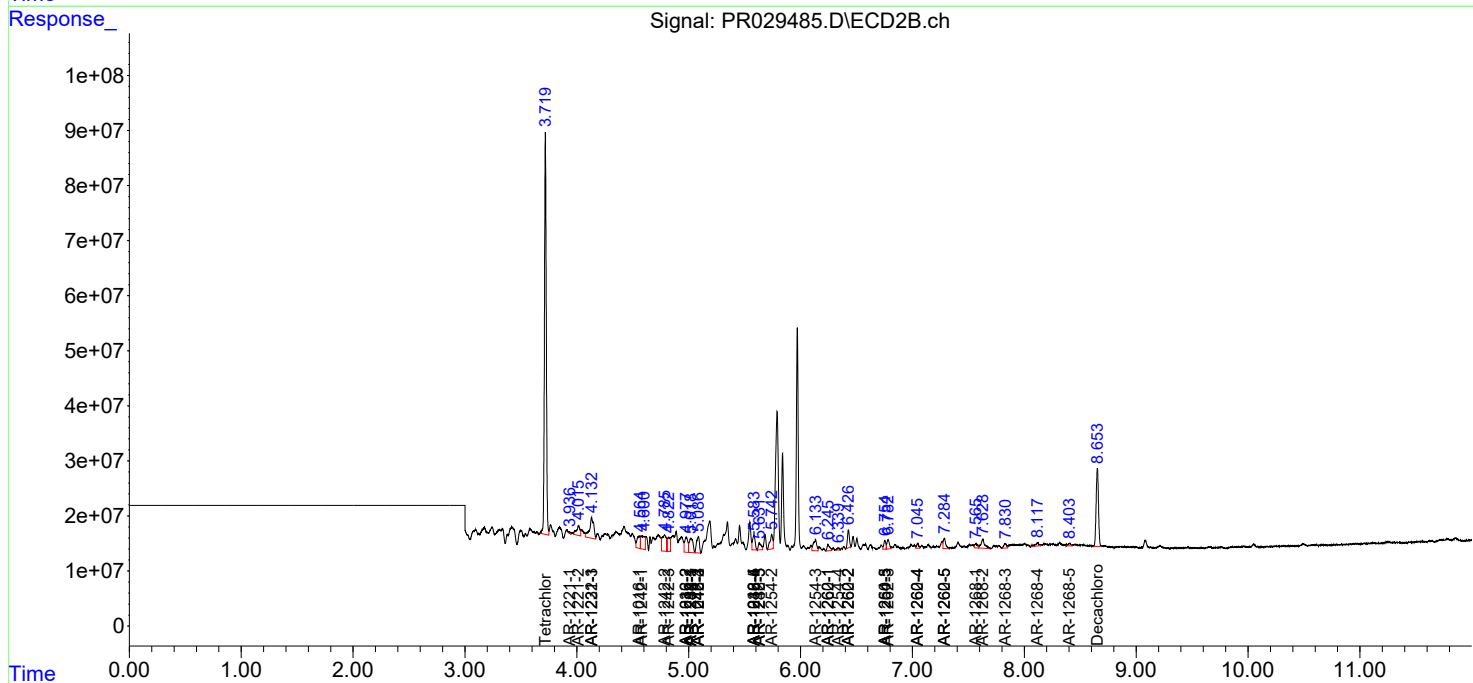
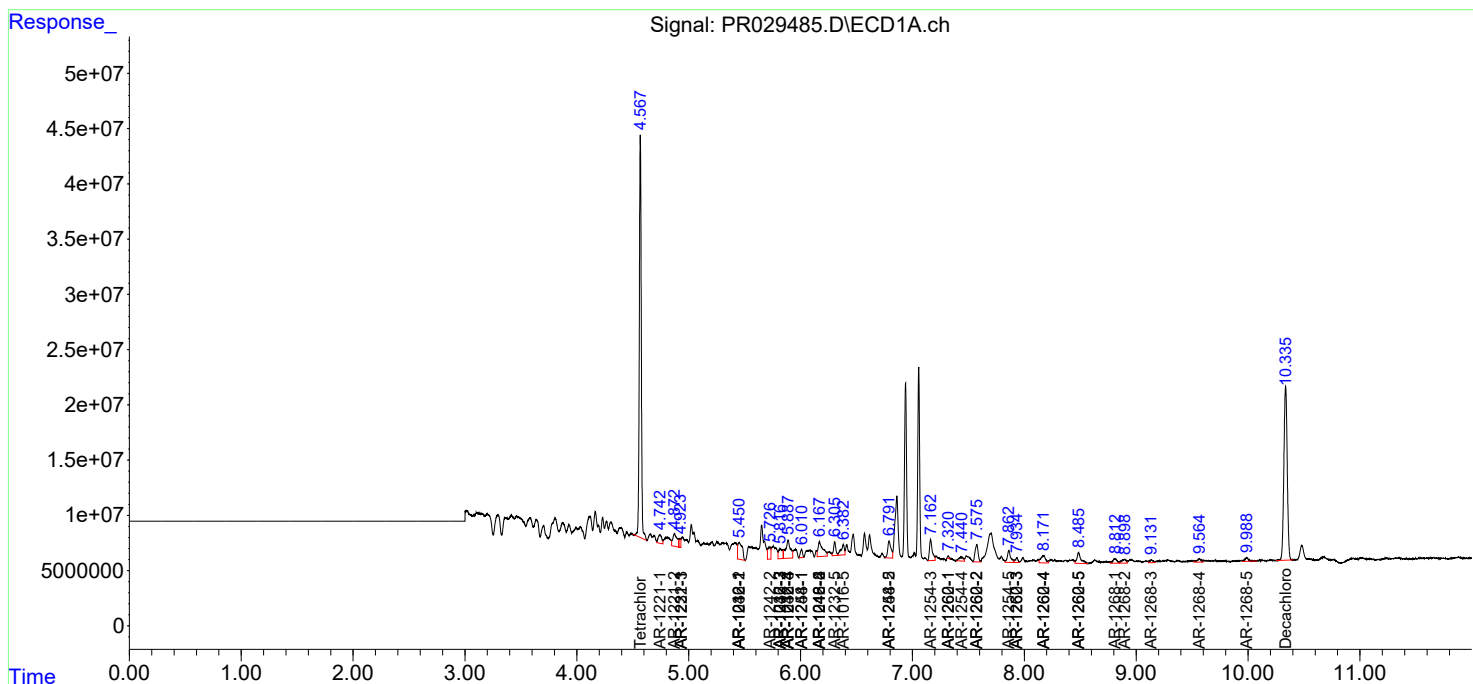
(f)=RT Delta > 1/2 Window (#)=Amounts differ by > 25% (m)=manual int.

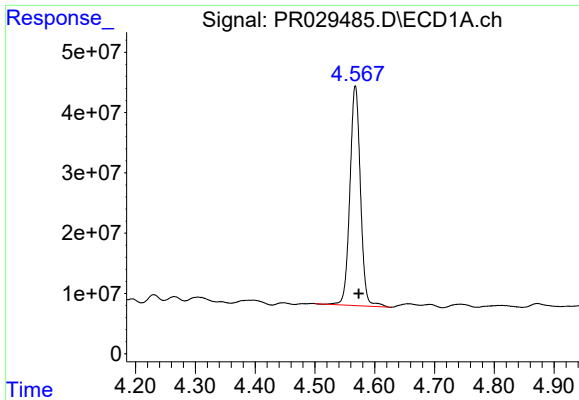
Data Path : \\TERASTORAGE\Terastorage\pestpcbsrv\HPCHEM1\ECD_R\Data\PR062918\
 Data File : PR029485.D
 Signal(s) : Signal #1: ECD1A.ch Signal #2: ECD2B.ch
 Acq On : 25 Jun 2018 11:55 am
 Operator : UA/SM
 Sample : J3246-03RE
 Misc :
 ALS Vial : 9 Sample Multiplier: 1

Instrument :
 ECD_R
 ClientSampled :

Integration File signal 1: autoint1.e
 Integration File signal 2: autoint2.e
 Quant Time: Jun 25 12:16:45 2018
 Quant Method : \\TERASTORAGE\Terastorage\pestpcbsrv\HPCHEM1\ECD_R\Method\PR062718.M
 Quant Title : GC EXTRACTABLES
 QLast Update : Sat Jun 23 08:41:26 2018
 Response via : Initial Calibration
 Integrator: ChemStation

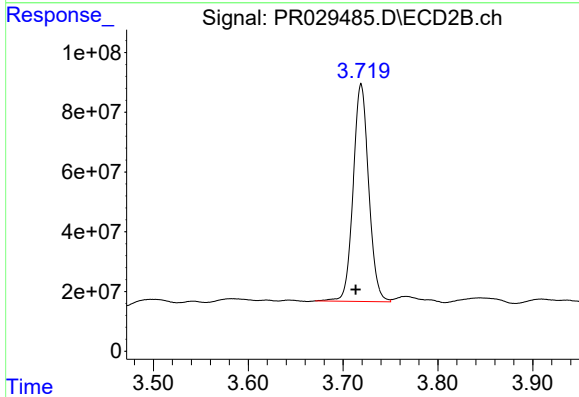
Volume Inj. : 2 µl
 Signal #1 Phase : ZB-MR1 Signal #2 Phase: ZB-MR2
 Signal #1 Info : 30Mx0.32mmx 0.50µ Signal #2 Info : 30M x 0.32mm x 0.25µm



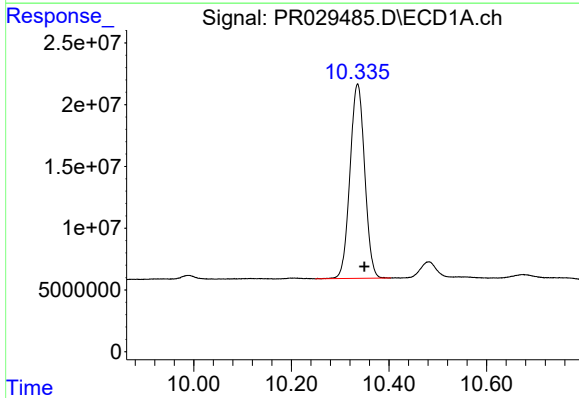


#1 Tetrachloro-m-xylene
 R.T.: 4.568 min
 Delta R.T.: -0.005 min
 Response: 447221221
 Conc: 19.43 ng/ml

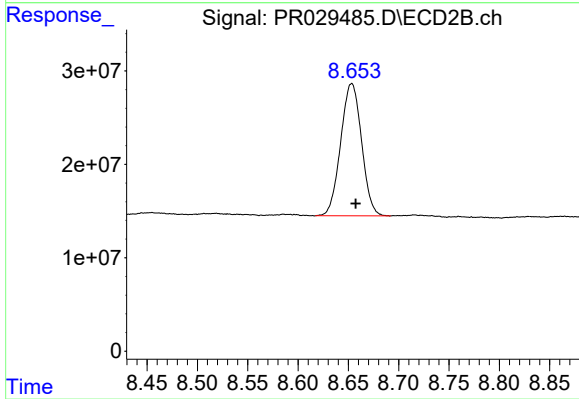
Instrument :
 ECD_R
 ClientSampleId :



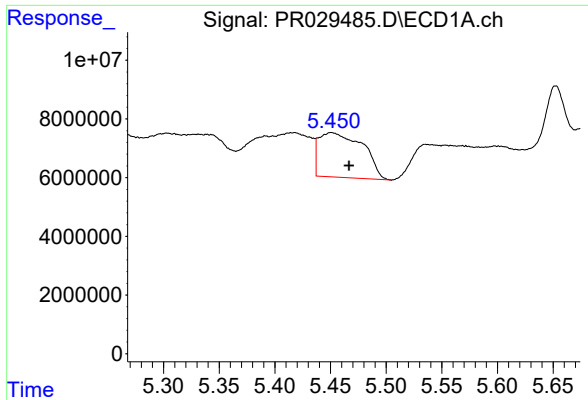
#1 Tetrachloro-m-xylene
 R.T.: 3.719 min
 Delta R.T.: 0.006 min
 Response: 829711347
 Conc: 17.55 ng/ml



#2 Decachlorobiphenyl
 R.T.: 10.336 min
 Delta R.T.: -0.014 min
 Response: 328787986
 Conc: 11.74 ng/ml

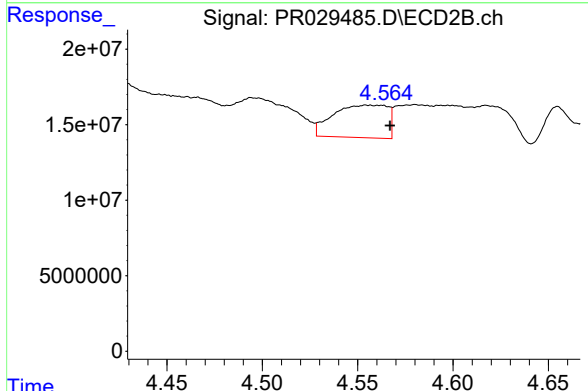


#2 Decachlorobiphenyl
 R.T.: 8.653 min
 Delta R.T.: -0.004 min
 Response: 204696286
 Conc: 10.36 ng/ml

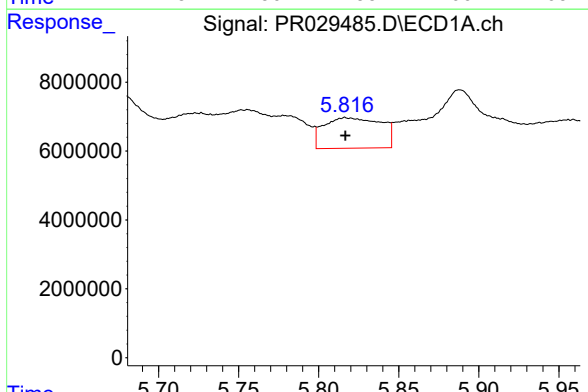


#3 AR-1016-1
 R.T.: 5.451 min
 Delta R.T.: -0.016 min
 Response: 41753430
 Conc: 72.64 ng/ml

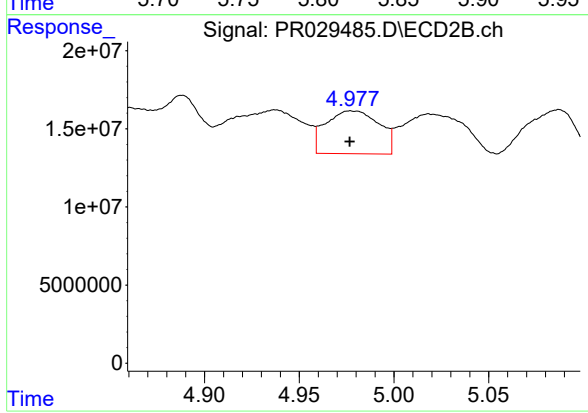
Instrument :
 ECD_R
 ClientSampleId :



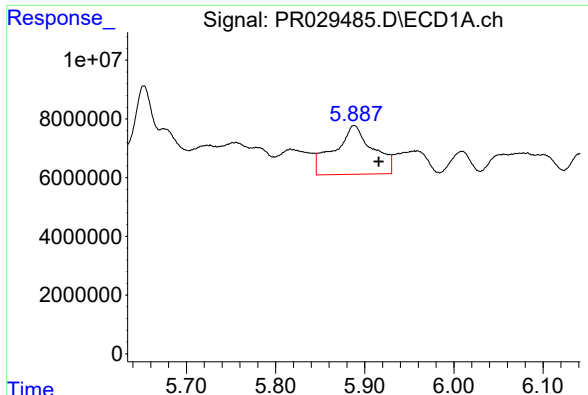
#3 AR-1016-1
 R.T.: 4.555 min
 Delta R.T.: -0.012 min
 Response: 42966422
 Conc: 33.33 ng/ml



#4 AR-1016-2
 R.T.: 5.817 min
 Delta R.T.: 0.000 min
 Response: 22090937
 Conc: 29.12 ng/ml



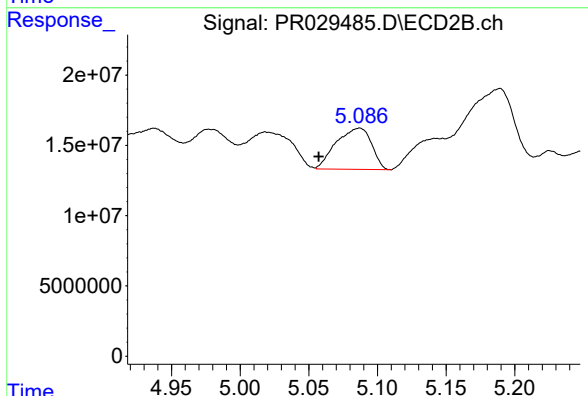
#4 AR-1016-2
 R.T.: 4.977 min
 Delta R.T.: 0.000 min
 Response: 53740817
 Conc: 40.62 ng/ml



#5 AR-1016-3

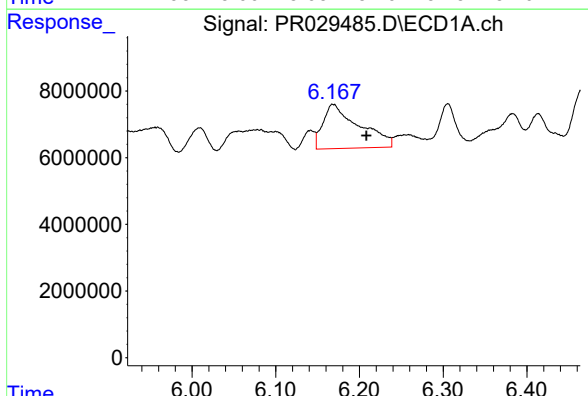
R.T.: 5.888 min
 Delta R.T.: -0.028 min
 Response: 49693817
 Conc: 77.99 ng/ml

Instrument :
 ECD_R
 ClientSampleId :



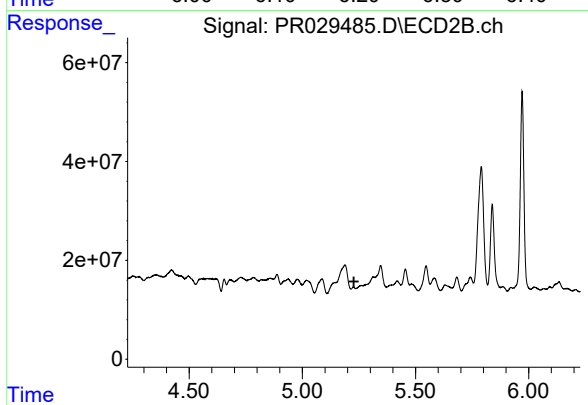
#5 AR-1016-3

R.T.: 5.087 min
 Delta R.T.: 0.030 min
 Response: 52345324
 Conc: 37.84 ng/ml



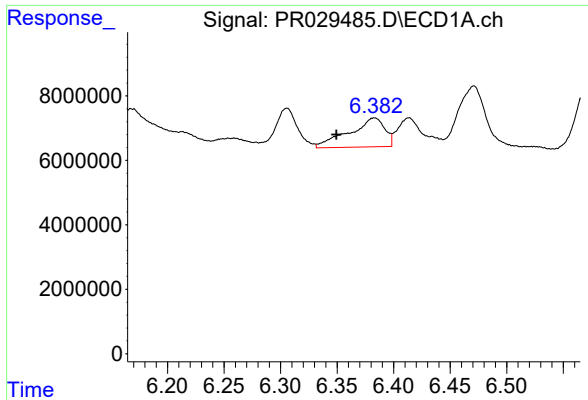
#6 AR-1016-4

R.T.: 6.168 min
 Delta R.T.: -0.040 min
 Response: 39861253
 Conc: 66.01 ng/ml



#6 AR-1016-4

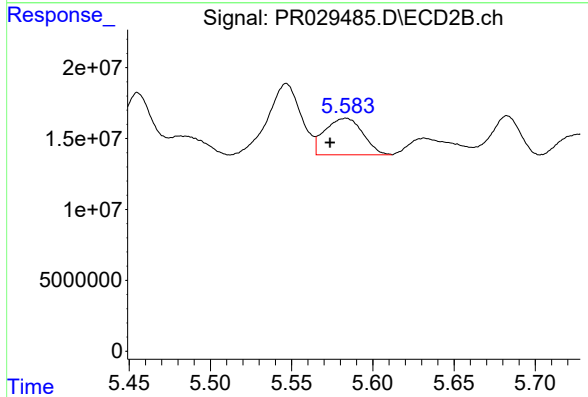
R.T.: 5.226 min
 Delta R.T.: -0.002 min
 Response: -5189734
 Conc: N.D.



#7 AR-1016-5

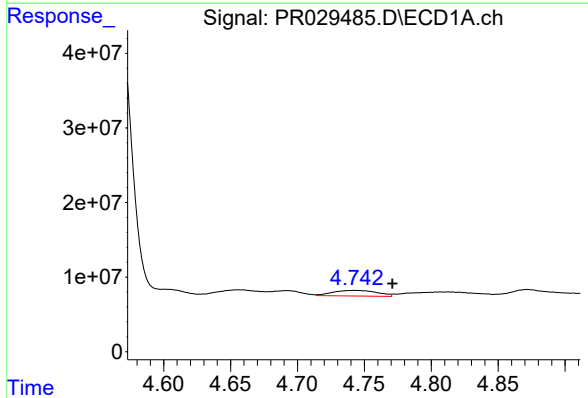
R.T.: 6.383 min
 Delta R.T.: 0.034 min
 Response: 19621493
 Conc: 29.76 ng/ml

Instrument :
 ECD_R
 ClientSampleId :



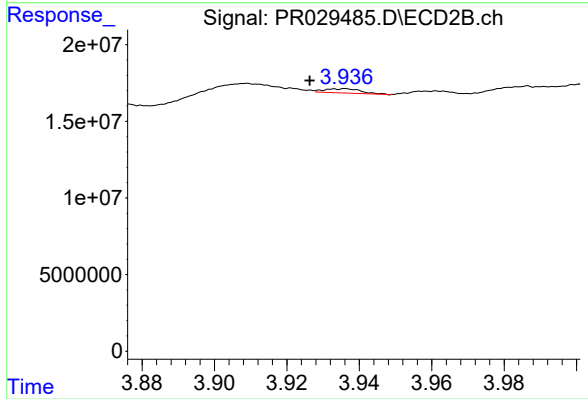
#7 AR-1016-5

R.T.: 5.583 min
 Delta R.T.: 0.010 min
 Response: 41836781
 Conc: 26.41 ng/ml



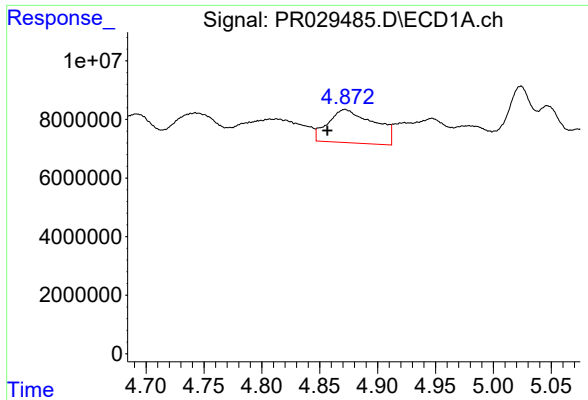
#8 AR-1221-1

R.T.: 4.743 min
 Delta R.T.: -0.028 min
 Response: 17133343
 Conc: 62.89 ng/ml



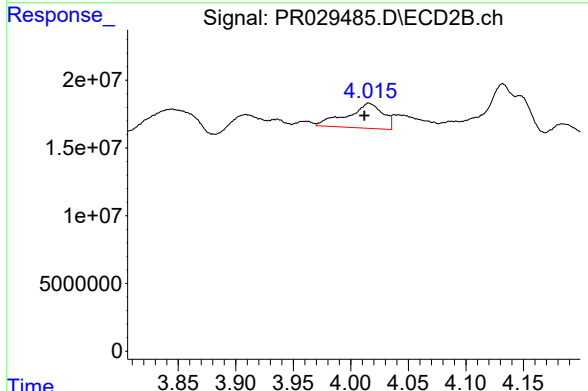
#8 AR-1221-1

R.T.: 3.935 min
 Delta R.T.: 0.009 min
 Response: 1943336
 Conc: 3.48 ng/ml

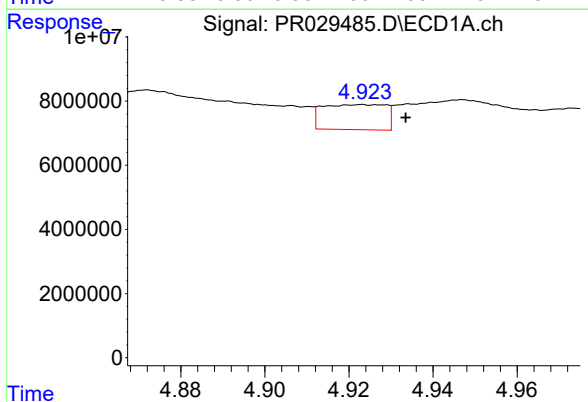


#9 AR-1221-2
 R.T.: 4.872 min
 Delta R.T.: 0.015 min
 Response: 31481770
 Conc: 158.12 ng/ml

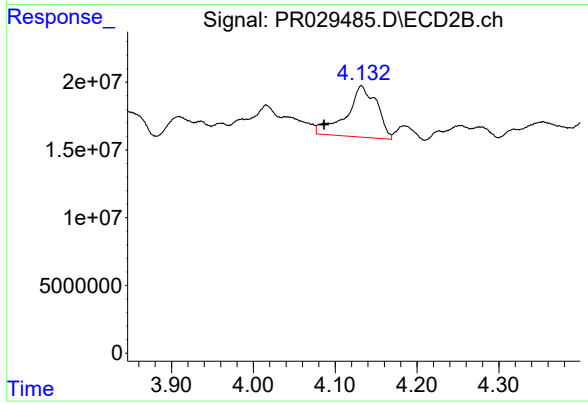
Instrument :
 ECD_R
 ClientSampleId :



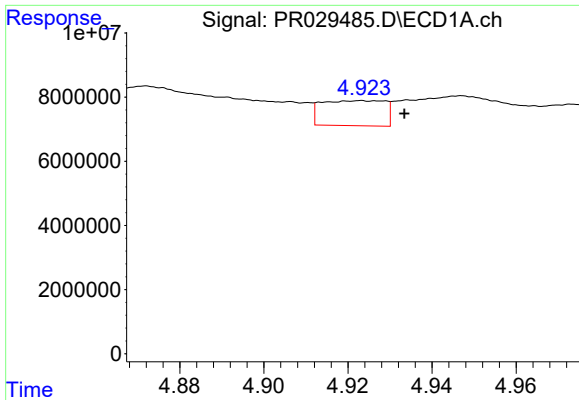
#9 AR-1221-2
 R.T.: 4.016 min
 Delta R.T.: 0.004 min
 Response: 39468827
 Conc: 92.67 ng/ml



#10 AR-1221-3
 R.T.: 4.923 min
 Delta R.T.: -0.010 min
 Response: 8152245
 Conc: 12.98 ng/ml

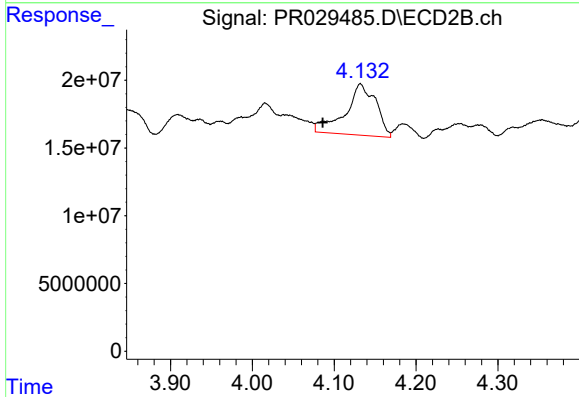


#10 AR-1221-3
 R.T.: 4.132 min
 Delta R.T.: 0.045 min
 Response: 98714445
 Conc: 72.79 ng/ml

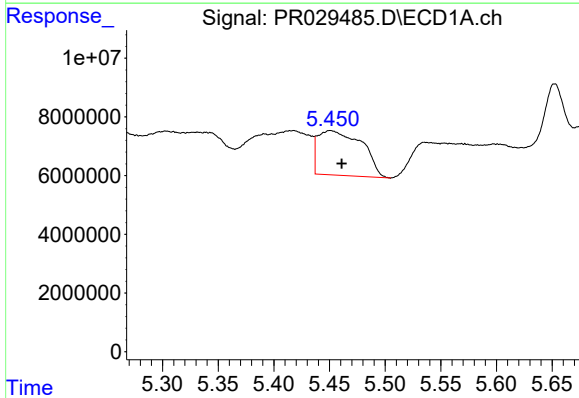


#11 AR-1232-1
 R.T.: 4.923 min
 Delta R.T.: -0.010 min
 Response: 8152245
 Conc: 19.26 ng/ml

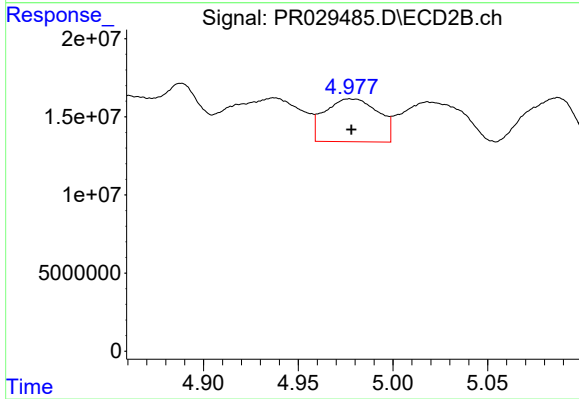
Instrument :
 ECD_R
 ClientSampleId :



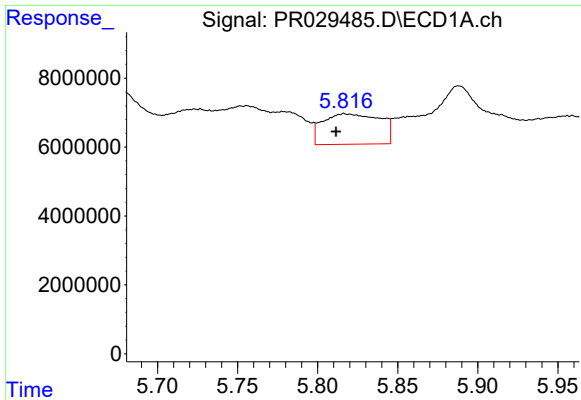
#11 AR-1232-1
 R.T.: 4.132 min
 Delta R.T.: 0.046 min
 Response: 98714445
 Conc: 108.82 ng/ml



#12 AR-1232-2
 R.T.: 5.451 min
 Delta R.T.: -0.010 min
 Response: 41753430
 Conc: 182.64 ng/ml



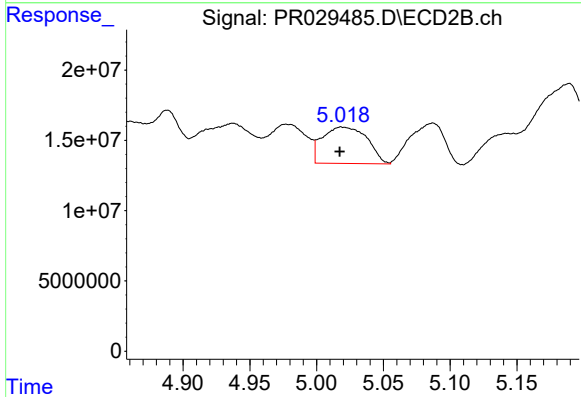
#12 AR-1232-2
 R.T.: 4.977 min
 Delta R.T.: 0.000 min
 Response: 53740817
 Conc: 102.22 ng/ml



#13 AR-1232-3

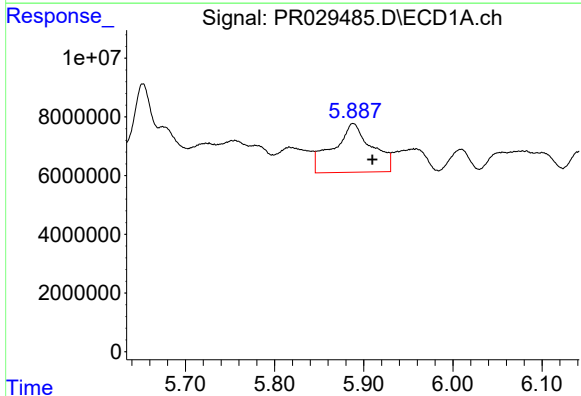
R.T.: 5.817 min
 Delta R.T.: 0.005 min
 Response: 22090937
 Conc: 70.76 ng/ml

Instrument :
 ECD_R
 ClientSampled :



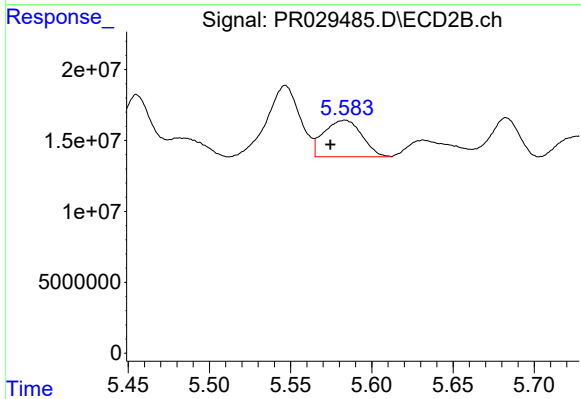
#13 AR-1232-3

R.T.: 5.019 min
 Delta R.T.: 0.001 min
 Response: 60215144
 Conc: 154.64 ng/ml



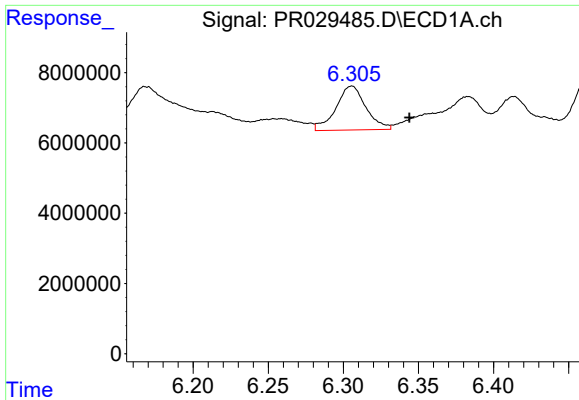
#14 AR-1232-4

R.T.: 5.888 min
 Delta R.T.: -0.022 min
 Response: 49693817
 Conc: 192.94 ng/ml



#14 AR-1232-4

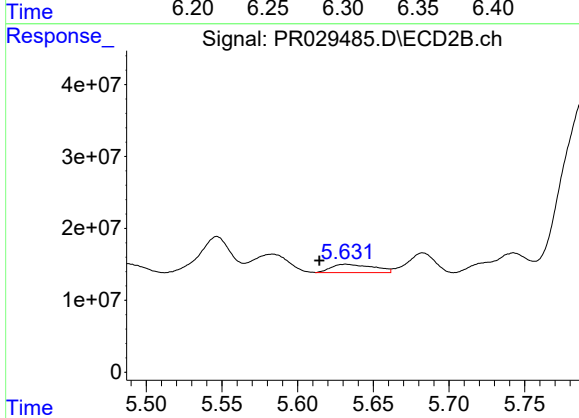
R.T.: 5.583 min
 Delta R.T.: 0.009 min
 Response: 41836781
 Conc: 57.21 ng/ml



#15 AR-1232-5

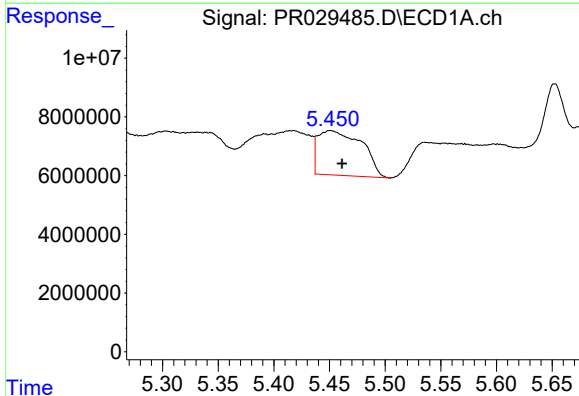
R.T.: 6.306 min
 Delta R.T.: -0.038 min
 Response: 17425878
 Conc: 64.64 ng/ml

Instrument :
 ECD_R
 ClientSampleId :



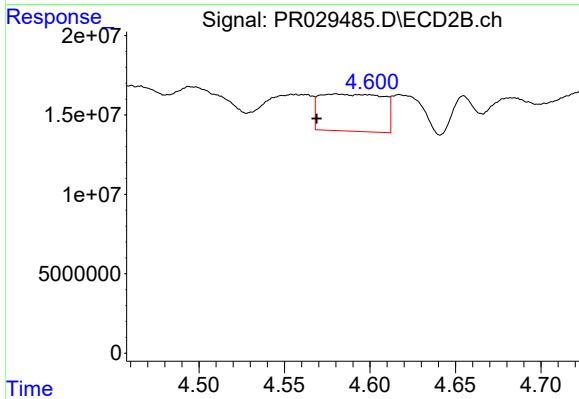
#15 AR-1232-5

R.T.: 5.632 min
 Delta R.T.: 0.017 min
 Response: 22540199
 Conc: 29.05 ng/ml



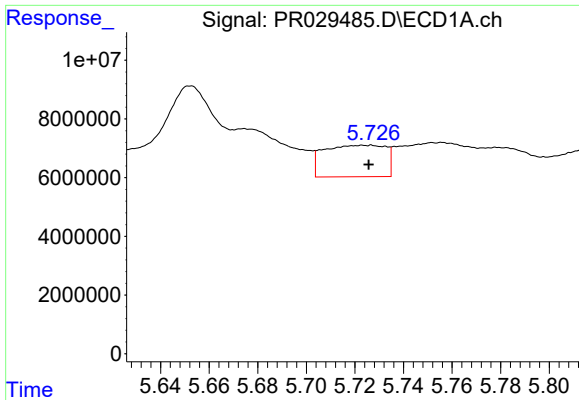
#16 AR-1242-1

R.T.: 5.451 min
 Delta R.T.: -0.010 min
 Response: 41753430
 Conc: 104.95 ng/ml



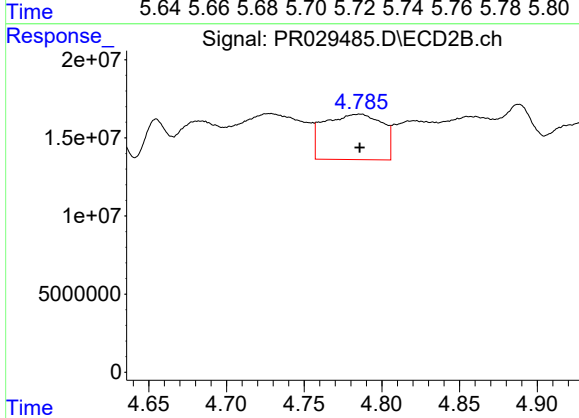
#16 AR-1242-1

R.T.: 4.580 min
 Delta R.T.: 0.011 min
 Response: 60165428
 Conc: 63.48 ng/ml

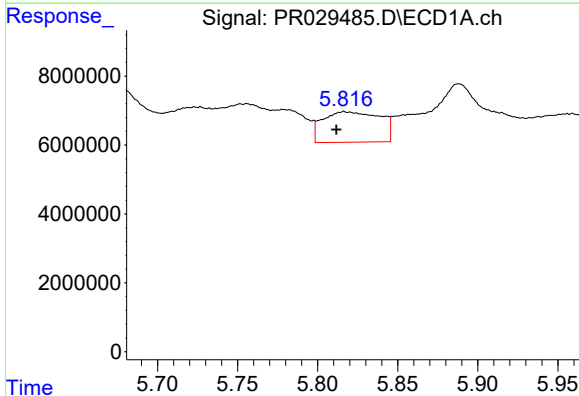


#17 AR-1242-2
 R.T.: 5.725 min
 Delta R.T.: 0.000 min
 Response: 18944563
 Conc: 31.78 ng/ml

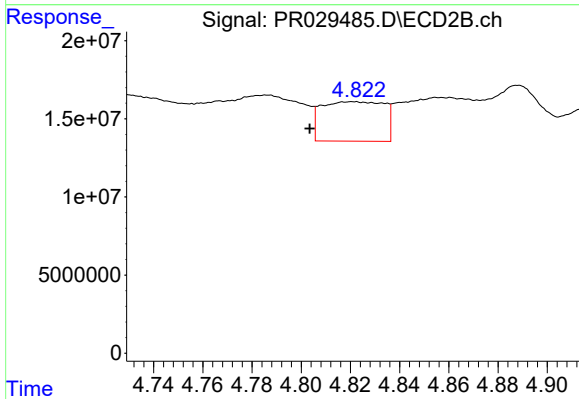
Instrument :
 ECD_R
 ClientSampleId :



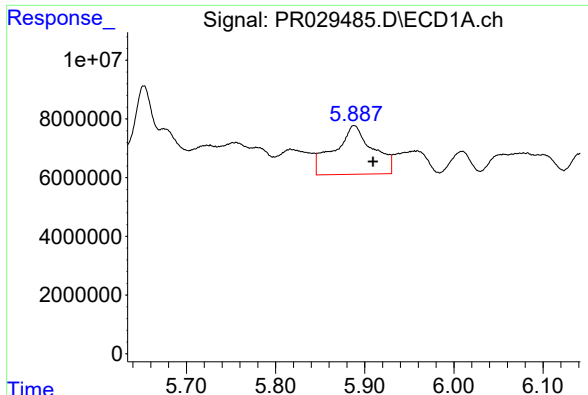
#17 AR-1242-2
 R.T.: 4.786 min
 Delta R.T.: 0.000 min
 Response: 75588393
 Conc: 63.06 ng/ml



#18 AR-1242-3
 R.T.: 5.817 min
 Delta R.T.: 0.005 min
 Response: 22090937
 Conc: 41.42 ng/ml



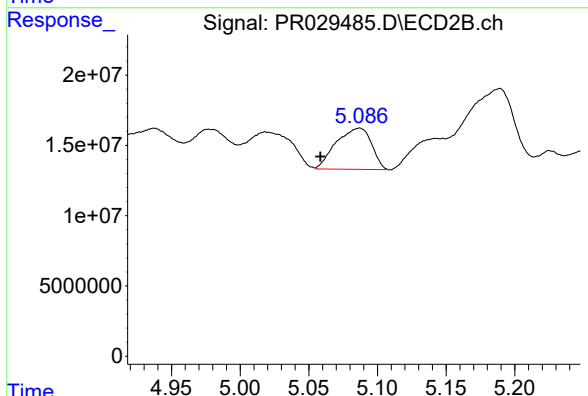
#18 AR-1242-3
 R.T.: 4.821 min
 Delta R.T.: 0.017 min
 Response: 44647357
 Conc: 23.08 ng/ml



#19 AR-1242-4

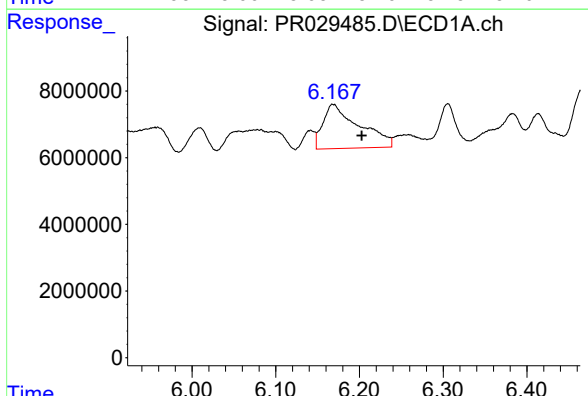
R.T.: 5.888 min
 Delta R.T.: -0.021 min
 Response: 49693817
 Conc: 111.00 ng/ml

Instrument :
 ECD_R
 ClientSampleId :



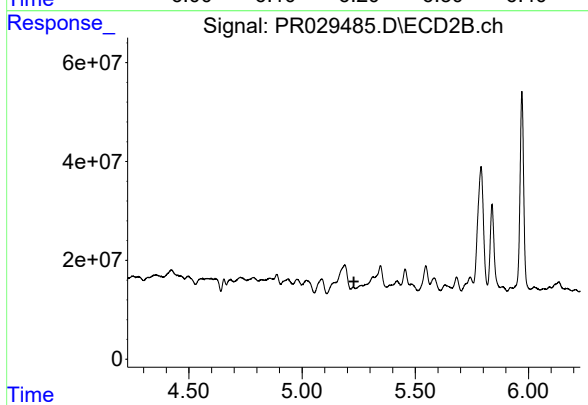
#19 AR-1242-4

R.T.: 5.087 min
 Delta R.T.: 0.029 min
 Response: 52345324
 Conc: 53.10 ng/ml



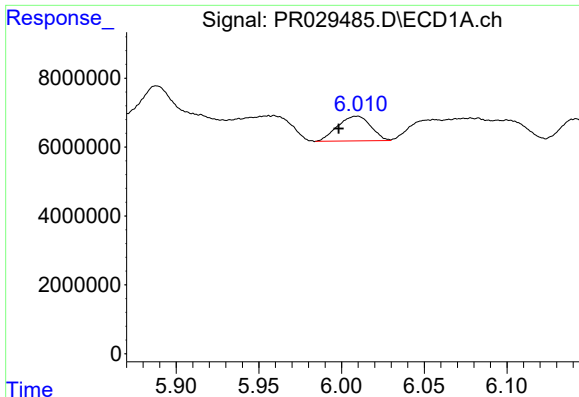
#20 AR-1242-5

R.T.: 6.168 min
 Delta R.T.: -0.034 min
 Response: 39861253
 Conc: 90.96 ng/ml



#20 AR-1242-5

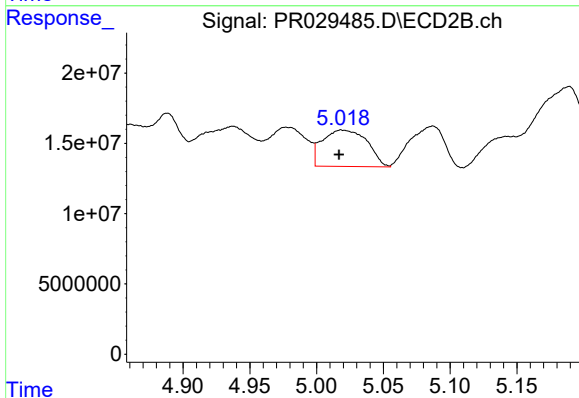
R.T.: 5.226 min
 Delta R.T.: -0.003 min
 Response: -5189734
 Conc: N.D.



#21 AR-1248-1

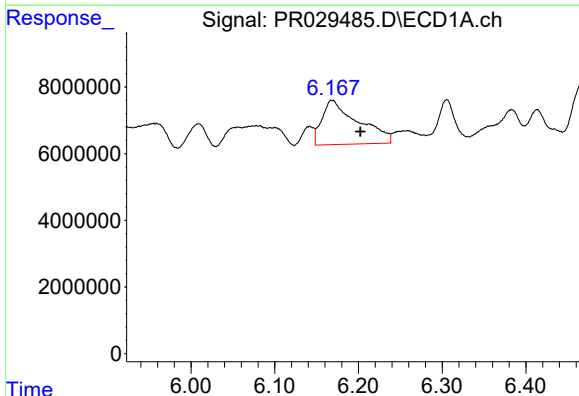
R.T.: 6.009 min
 Delta R.T.: 0.011 min
 Response: 10004169
 Conc: 13.74 ng/ml

Instrument :
 ECD_R
 ClientSampleId :



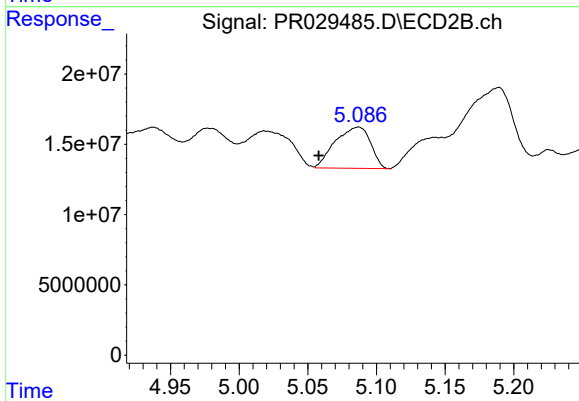
#21 AR-1248-1

R.T.: 5.019 min
 Delta R.T.: 0.002 min
 Response: 60215144
 Conc: 39.72 ng/ml



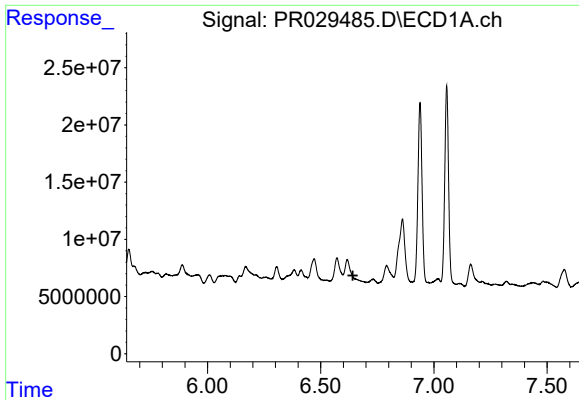
#22 AR-1248-2

R.T.: 6.168 min
 Delta R.T.: -0.034 min
 Response: 39861253
 Conc: 48.88 ng/ml



#22 AR-1248-2

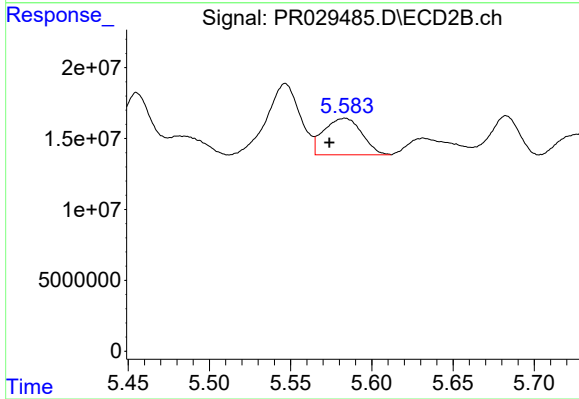
R.T.: 5.087 min
 Delta R.T.: 0.029 min
 Response: 52345324
 Conc: 33.18 ng/ml



#24 AR-1248-4

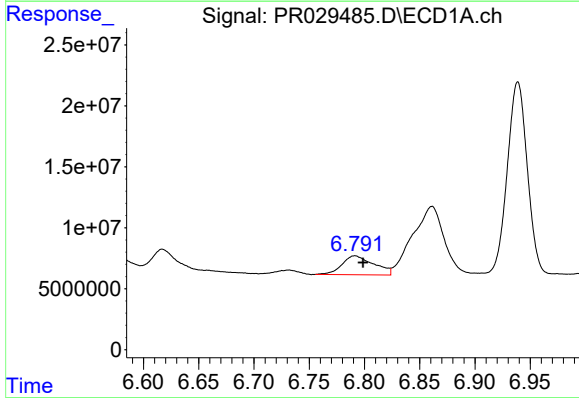
R.T.: 6.617 min
 Delta R.T.: -0.025 min
 Response: -91285
 Conc: N.D.

Instrument :
 ECD_R
 ClientSampleId :



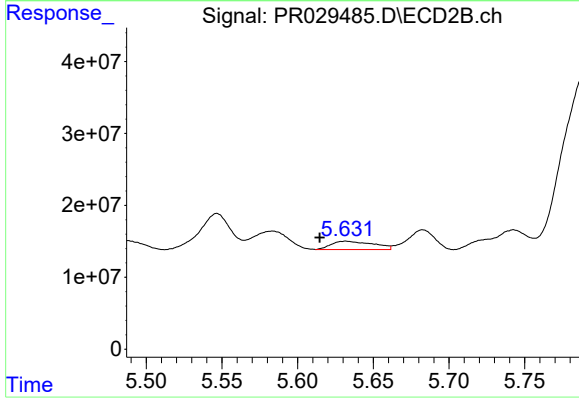
#24 AR-1248-4

R.T.: 5.583 min
 Delta R.T.: 0.009 min
 Response: 41836781
 Conc: 13.98 ng/ml



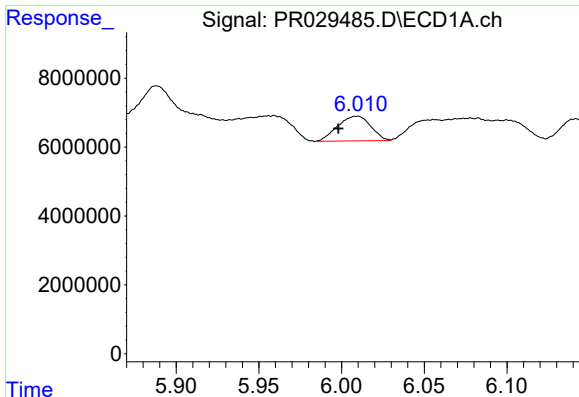
#25 AR-1248-5

R.T.: 6.791 min
 Delta R.T.: -0.007 min
 Response: 31497038
 Conc: 32.39 ng/ml



#25 AR-1248-5

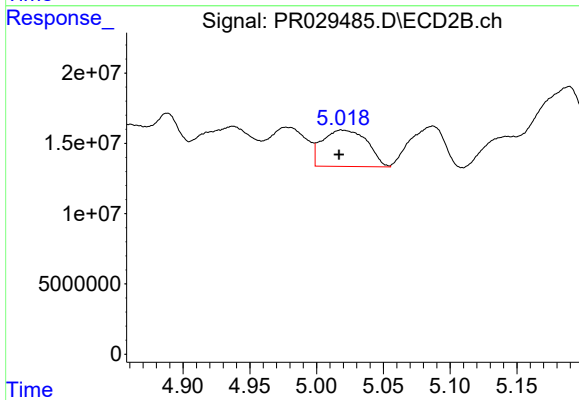
R.T.: 5.632 min
 Delta R.T.: 0.017 min
 Response: 22540199
 Conc: 10.57 ng/ml



#26 AR-1254-1

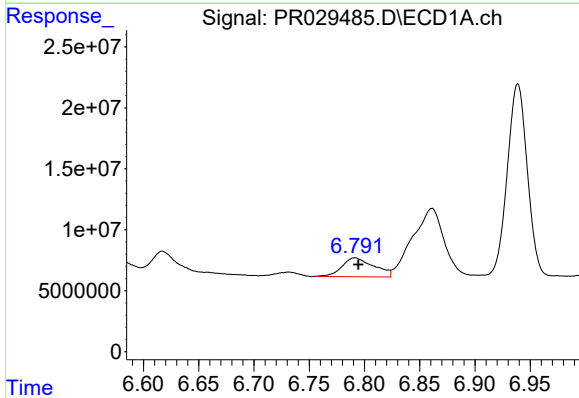
R.T.: 6.009 min
 Delta R.T.: 0.011 min
 Response: 10004169
 Conc: 19.53 ng/ml

Instrument :
 ECD_R
 ClientSampleId :



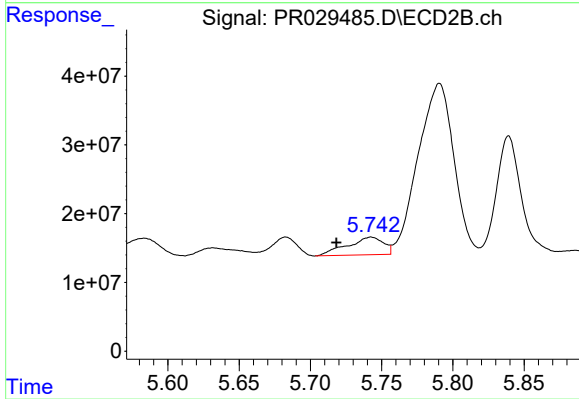
#26 AR-1254-1

R.T.: 5.019 min
 Delta R.T.: 0.002 min
 Response: 60215144
 Conc: 52.19 ng/ml



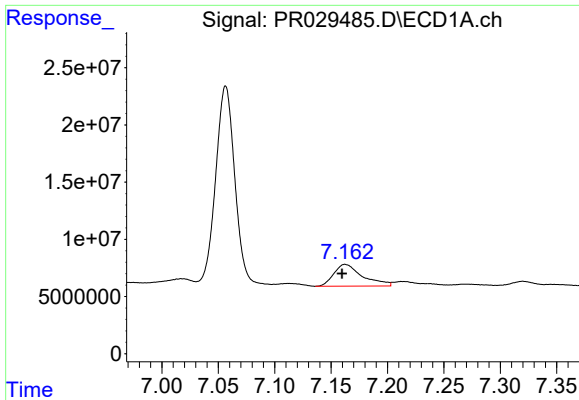
#27 AR-1254-2

R.T.: 6.791 min
 Delta R.T.: -0.003 min
 Response: 31497038
 Conc: 21.40 ng/ml



#27 AR-1254-2

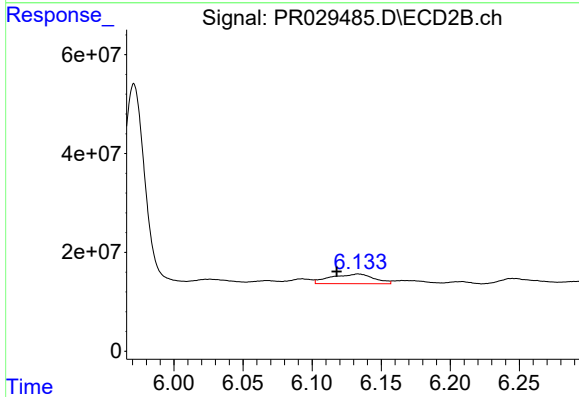
R.T.: 5.743 min
 Delta R.T.: 0.025 min
 Response: 45295584
 Conc: 15.88 ng/ml



#28 AR-1254-3

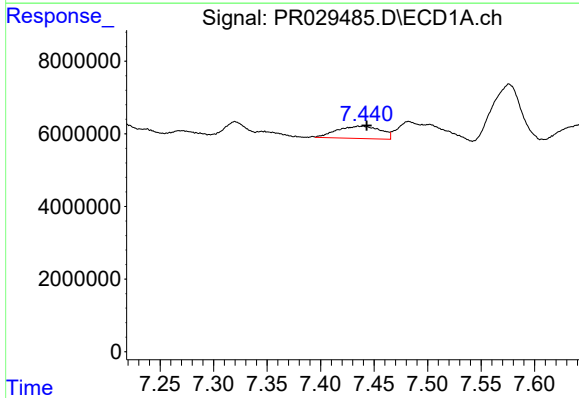
R.T.: 7.162 min
 Delta R.T.: 0.003 min
 Response: 33595524
 Conc: 21.32 ng/ml

Instrument :
 ECD_R
 ClientSampled :



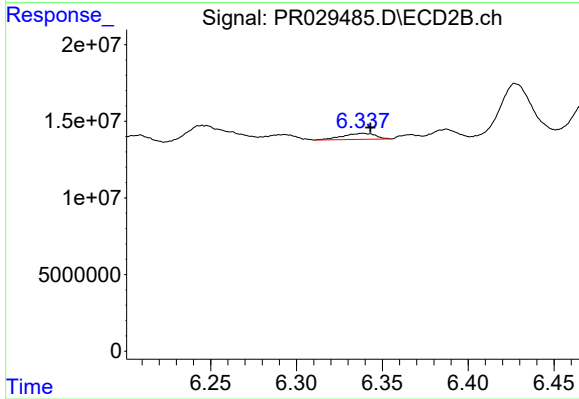
#28 AR-1254-3

R.T.: 6.134 min
 Delta R.T.: 0.016 min
 Response: 42061333
 Conc: 8.65 ng/ml



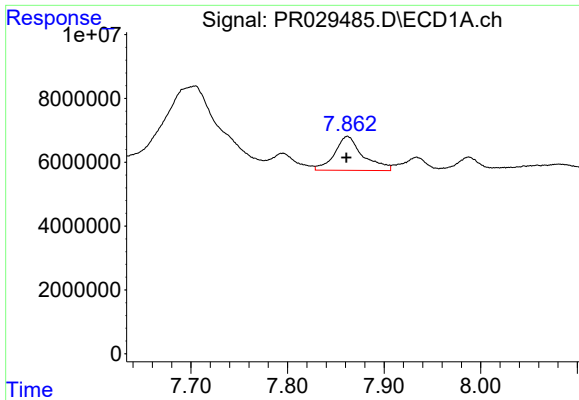
#29 AR-1254-4

R.T.: 7.440 min
 Delta R.T.: -0.003 min
 Response: 9660253
 Conc: 7.66 ng/ml



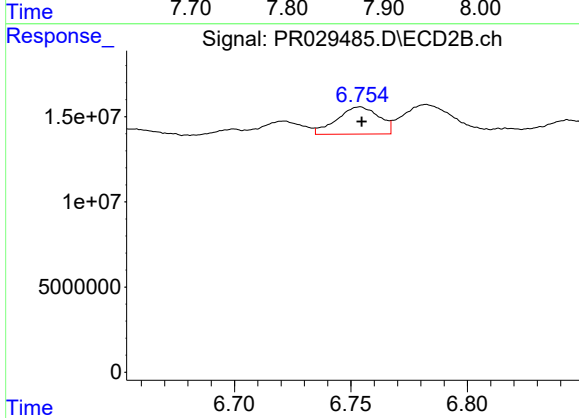
#29 AR-1254-4

R.T.: 6.339 min
 Delta R.T.: -0.004 min
 Response: 5089271
 Conc: 1.35 ng/ml

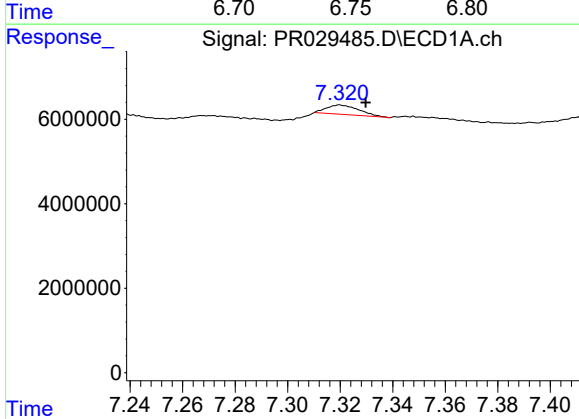


#30 AR-1254-5
 R.T.: 7.862 min
 Delta R.T.: 0.000 min
 Response: 21808949
 Conc: 16.39 ng/ml

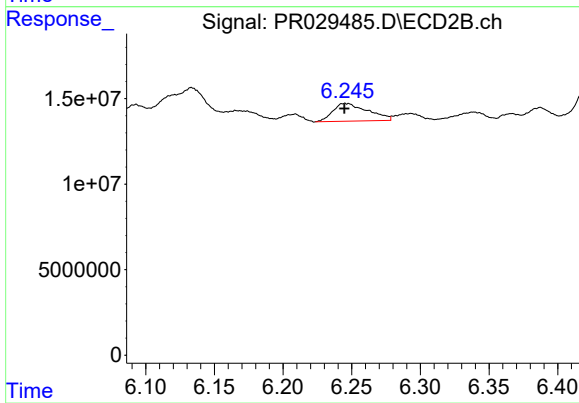
Instrument :
 ECD_R
 ClientSampled :



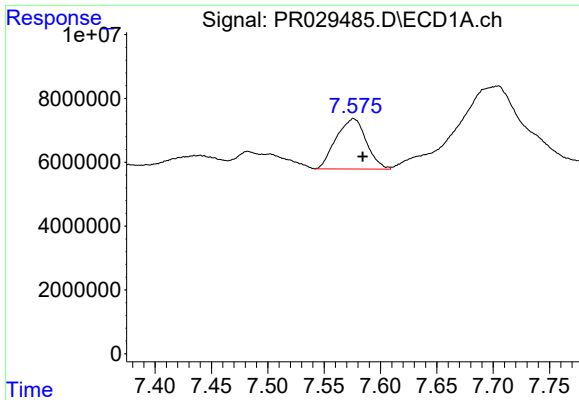
#30 AR-1254-5
 R.T.: 6.754 min
 Delta R.T.: 0.000 min
 Response: 20044586
 Conc: 4.79 ng/ml



#31 AR-1260-1
 R.T.: 7.320 min
 Delta R.T.: -0.010 min
 Response: 1907768
 Conc: 1.55 ng/ml

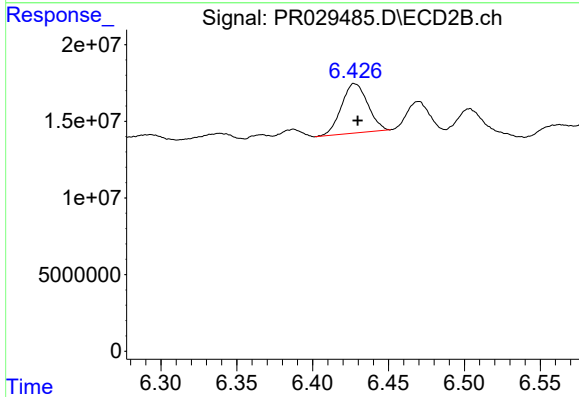


#31 AR-1260-1
 R.T.: 6.246 min
 Delta R.T.: 0.000 min
 Response: 18504221
 Conc: 5.58 ng/ml

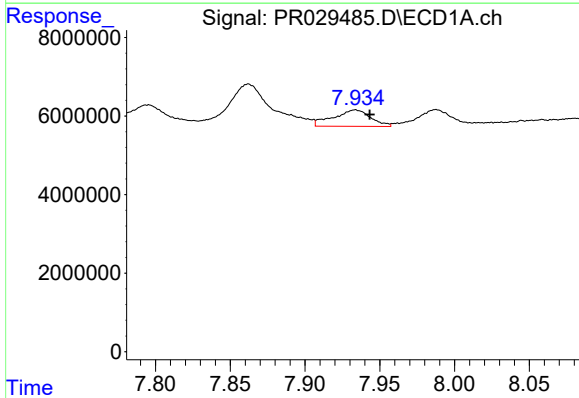


#32 AR-1260-2
 R.T.: 7.576 min
 Delta R.T.: -0.008 min
 Response: 29371883
 Conc: 18.73 ng/ml

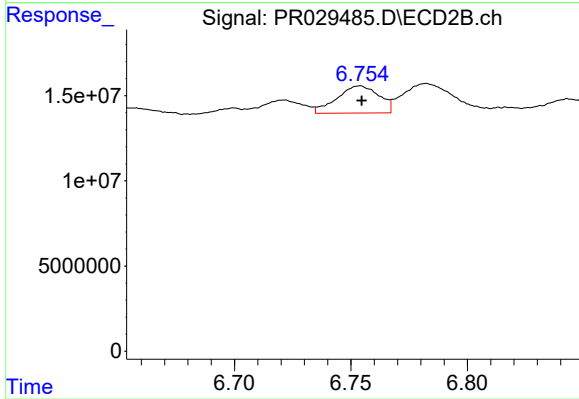
Instrument :
 ECD_R
 ClientSampleId :



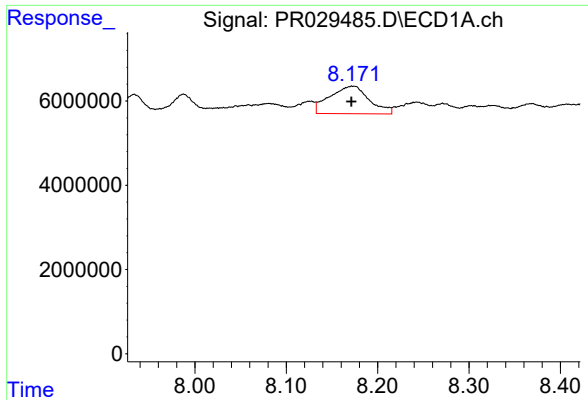
#32 AR-1260-2
 R.T.: 6.428 min
 Delta R.T.: -0.002 min
 Response: 38717655
 Conc: 9.22 ng/ml



#33 AR-1260-3
 R.T.: 7.934 min
 Delta R.T.: -0.010 min
 Response: 7322931
 Conc: 6.01 ng/ml



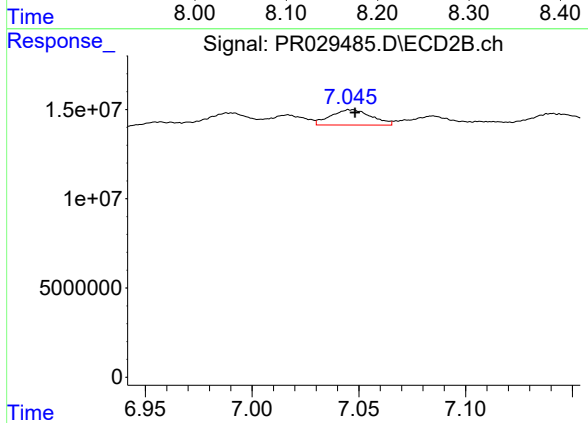
#33 AR-1260-3
 R.T.: 6.754 min
 Delta R.T.: 0.000 min
 Response: 20044586
 Conc: 4.86 ng/ml



#34 AR-1260-4

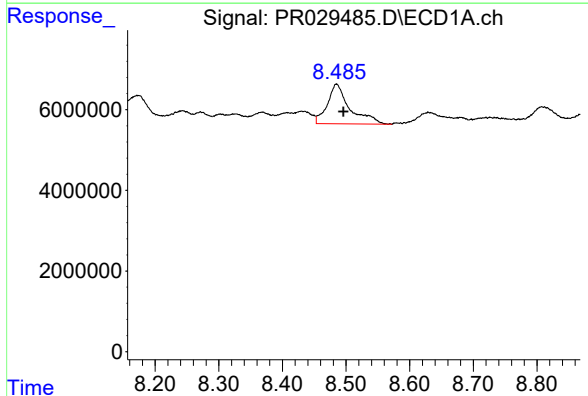
R.T.: 8.173 min
 Delta R.T.: 0.002 min
 Response: 19691956
 Conc: 14.76 ng/ml

Instrument :
 ECD_R
 ClientSampleId :



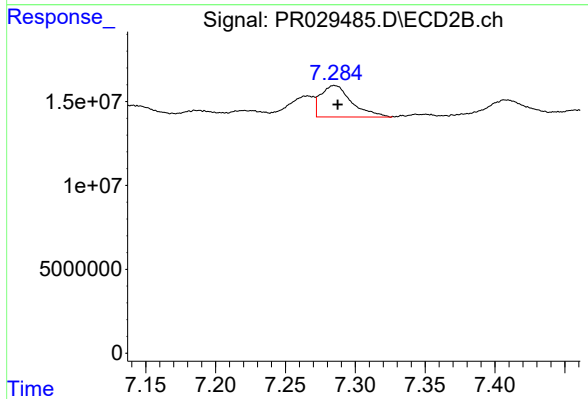
#34 AR-1260-4

R.T.: 7.046 min
 Delta R.T.: -0.002 min
 Response: 11437682
 Conc: 4.67 ng/ml



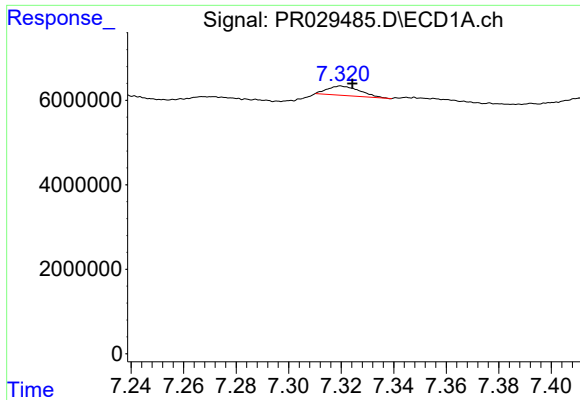
#35 AR-1260-5

R.T.: 8.485 min
 Delta R.T.: -0.011 min
 Response: 24038555
 Conc: 8.18 ng/ml



#35 AR-1260-5

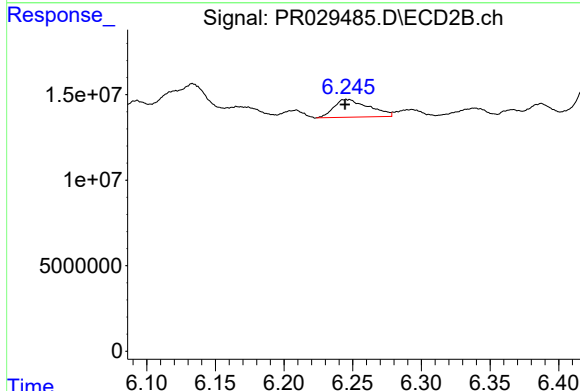
R.T.: 7.285 min
 Delta R.T.: -0.002 min
 Response: 28879661
 Conc: 5.19 ng/ml



#36 AR-1262-1

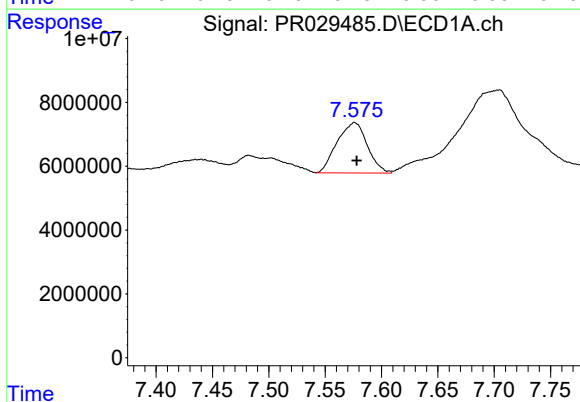
R.T.: 7.320 min
 Delta R.T.: -0.004 min
 Response: 1907768
 Conc: 2.66 ng/ml

Instrument :
 ECD_R
 ClientSampleId :



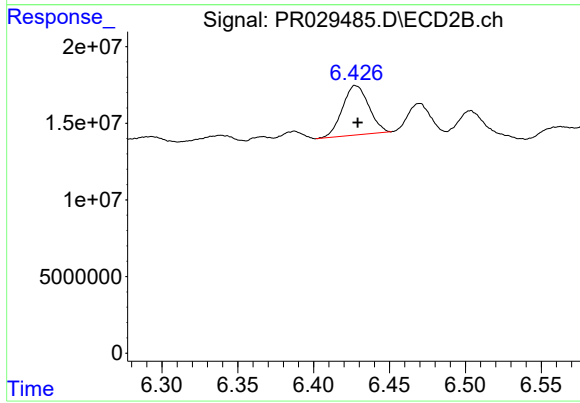
#36 AR-1262-1

R.T.: 6.246 min
 Delta R.T.: 0.001 min
 Response: 18504221
 Conc: 4.75 ng/ml



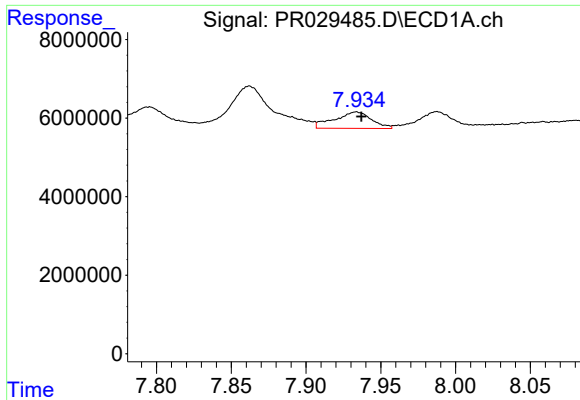
#37 AR-1262-2

R.T.: 7.576 min
 Delta R.T.: -0.002 min
 Response: 29371883
 Conc: 16.97 ng/ml



#37 AR-1262-2

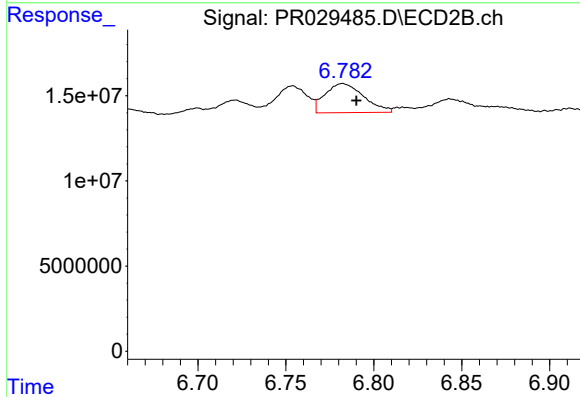
R.T.: 6.428 min
 Delta R.T.: -0.001 min
 Response: 38717655
 Conc: 8.02 ng/ml



#38 AR-1262-3

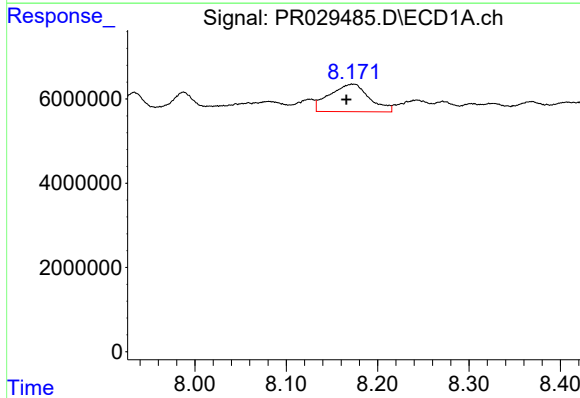
R.T.: 7.934 min
 Delta R.T.: -0.003 min
 Response: 7322931
 Conc: 2.82 ng/ml

Instrument :
 ECD_R
 ClientSampleId :



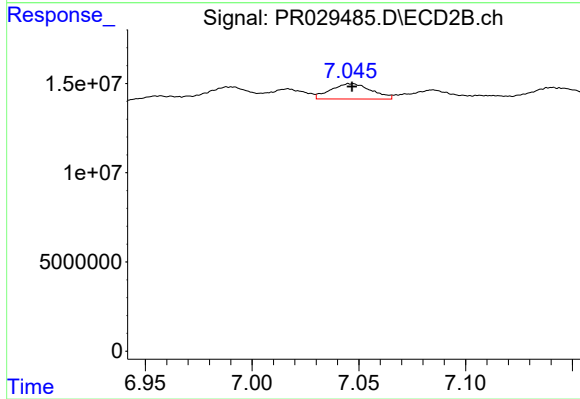
#38 AR-1262-3

R.T.: 6.782 min
 Delta R.T.: -0.008 min
 Response: 26146562
 Conc: 3.54 ng/ml



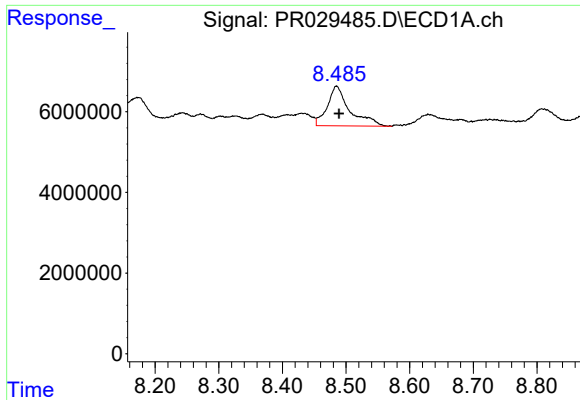
#39 AR-1262-4

R.T.: 8.173 min
 Delta R.T.: 0.007 min
 Response: 19691956
 Conc: 8.50 ng/ml



#39 AR-1262-4

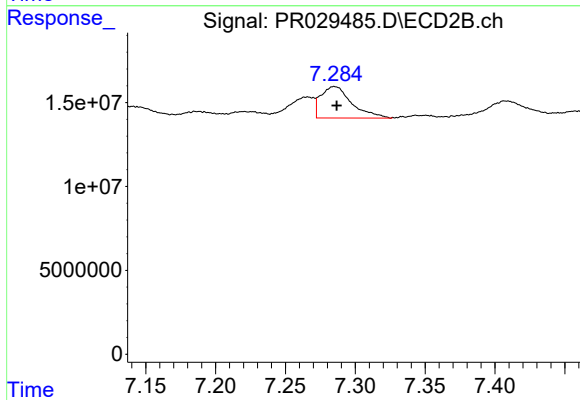
R.T.: 7.046 min
 Delta R.T.: 0.000 min
 Response: 11437682
 Conc: 2.25 ng/ml



#40 AR-1262-5

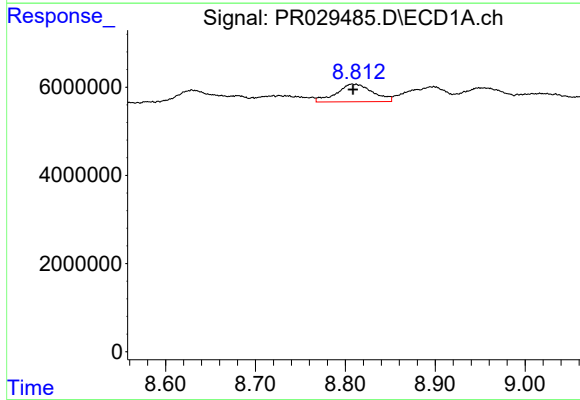
R.T.: 8.485 min
 Delta R.T.: -0.004 min
 Response: 24038555
 Conc: 4.78 ng/ml

Instrument :
 ECD_R
 ClientSampleId :



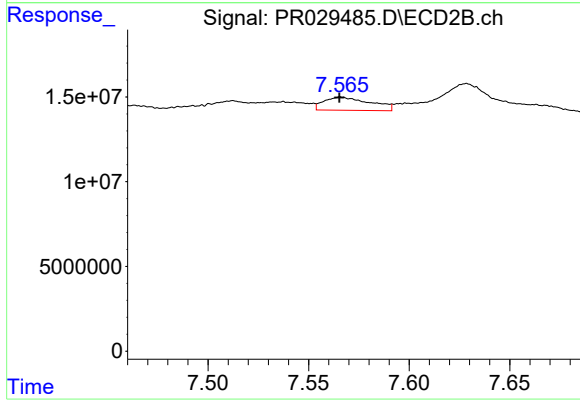
#40 AR-1262-5

R.T.: 7.285 min
 Delta R.T.: -0.001 min
 Response: 28879661
 Conc: 3.01 ng/ml



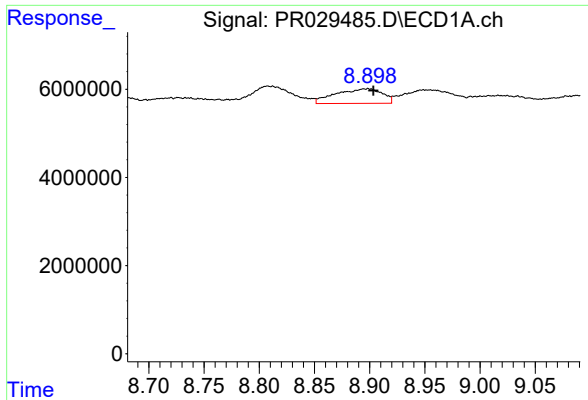
#41 AR-1268-1

R.T.: 8.808 min
 Delta R.T.: 0.000 min
 Response: 11214430
 Conc: 3.02 ng/ml



#41 AR-1268-1

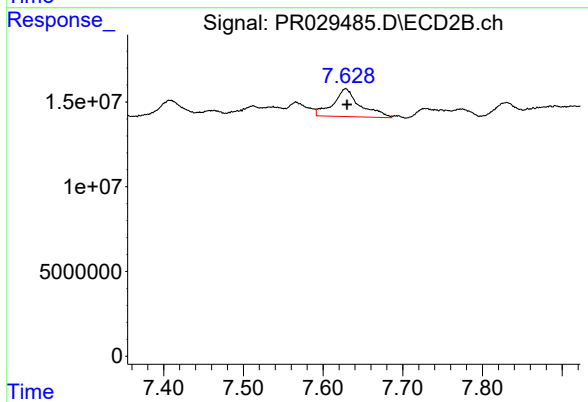
R.T.: 7.566 min
 Delta R.T.: 0.000 min
 Response: 12497726
 Conc: 2.40 ng/ml



#42 AR-1268-2

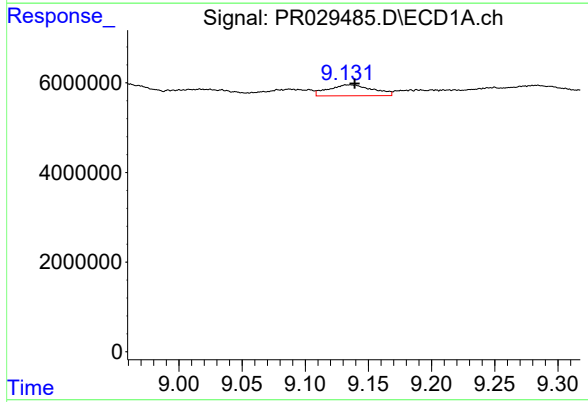
R.T.: 8.899 min
 Delta R.T.: -0.005 min
 Response: 9719916
 Conc: 2.78 ng/ml

Instrument :
 ECD_R
 ClientSampleId :



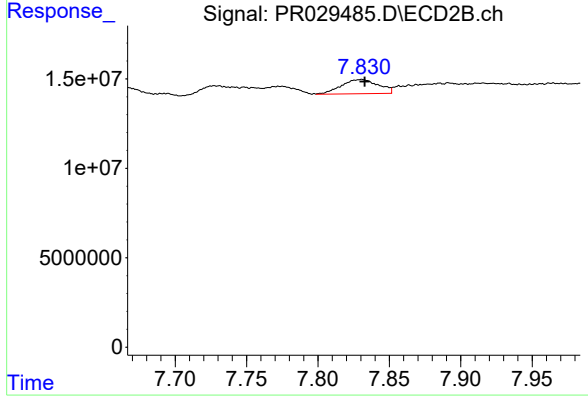
#42 AR-1268-2

R.T.: 7.628 min
 Delta R.T.: -0.002 min
 Response: 38435793
 Conc: 8.64 ng/ml



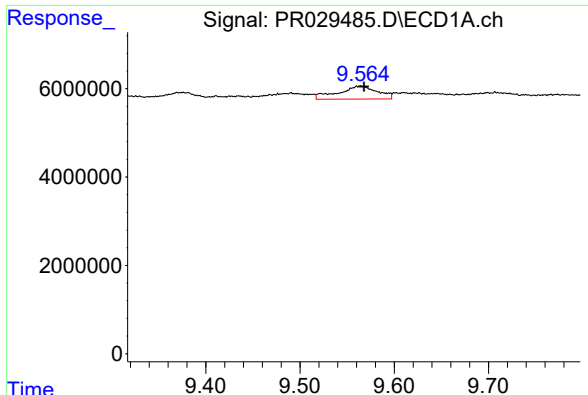
#43 AR-1268-3

R.T.: 9.135 min
 Delta R.T.: -0.004 min
 Response: 5986120
 Conc: 1.97 ng/ml



#43 AR-1268-3

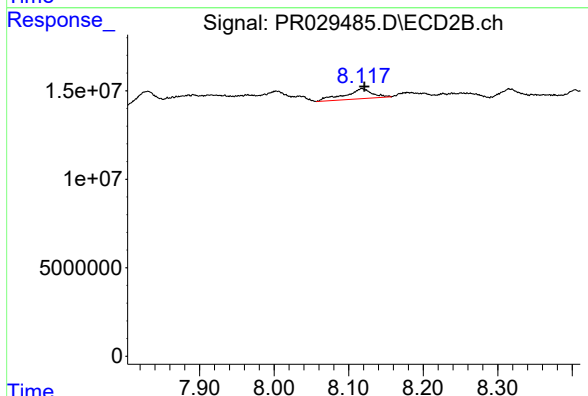
R.T.: 7.830 min
 Delta R.T.: -0.002 min
 Response: 14398796
 Conc: 4.63 ng/ml



#44 AR-1268-4

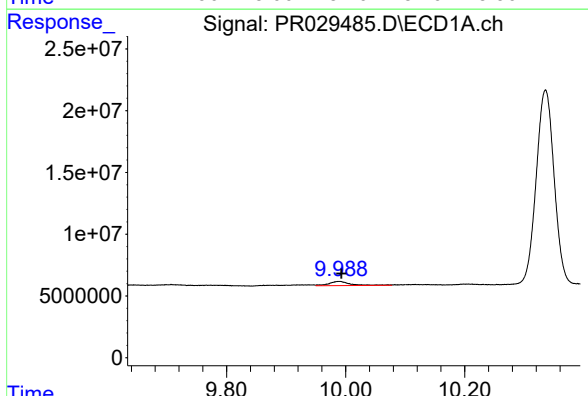
R.T.: 9.565 min
 Delta R.T.: -0.003 min
 Response: 8546094
 Conc: 6.67 ng/ml

Instrument :
 ECD_R
 ClientSampleId :



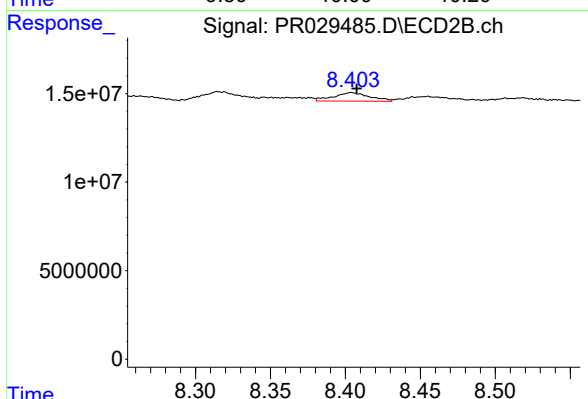
#44 AR-1268-4

R.T.: 8.118 min
 Delta R.T.: -0.003 min
 Response: 14401613
 Conc: 12.05 ng/ml



#45 AR-1268-5

R.T.: 9.989 min
 Delta R.T.: -0.004 min
 Response: 8492184
 Conc: 0.92 ng/ml



#45 AR-1268-5

R.T.: 8.404 min
 Delta R.T.: -0.004 min
 Response: 8177014
 Conc: 1.24 ng/ml