

Data Path : Z:\pestpcbsrv\HPCHEM1\ECD_R\Data\PR062918\
 Data File : PR029499.D
 Signal(s) : Signal #1: ECD1A.ch Signal #2: ECD2B.ch
 Acq On : 25 Jun 2018 17:39
 Operator : UA/SM
 Sample : PB110515BS
 Misc :
 ALS Vial : 5 Sample Multiplier: 1

Instrument :
 ECD_R
 ClientSampleId :
 PB110515BS

Integration File signal 1: autoint1.e
 Integration File signal 2: autoint2.e
 Quant Time: Jun 26 04:52:02 2018
 Quant Method : \\TERASTORAGE\Terastorage\pestpcbsrv\HPCHEM1\ECD_R\Method\PR062718.M
 Quant Title : GC EXTRACTABLES
 QLast Update : Sat Jun 23 08:41:26 2018
 Response via : Initial Calibration
 Integrator: ChemStation

Volume Inj. : 2 µl
 Signal #1 Phase : ZB-MR1 Signal #2 Phase: ZB-MR2
 Signal #1 Info : 30Mx0.32mmx 0.50µ Signal #2 Info : 30M x 0.32mm x 0.25µm

Compound	RT#1	RT#2	Resp#1	Resp#2	ng/ml	ng/ml

System Monitoring Compounds						
1) SA Tetrachlo...	4.568	3.720	282.0E6	527.6E6	12.252	11.161
2) SA Decachlor...	10.334	8.652	451.1E6	351.5E6	16.112	17.796
Target Compounds						
3) L1 AR-1016-1	5.459	4.570	25582893	62557597	44.506	48.527
4) L1 AR-1016-2	5.809	4.979	39939007	50948070	52.650	38.511 #
5) L1 AR-1016-3	5.908	5.058	36460958	56804732	57.222	41.062 #
6) L1 AR-1016-4	6.200	5.229	36853641	62838935	61.032	41.244 #
7) L1 AR-1016-5	6.341	5.574	32258126	62078114	48.933	39.183
31) L7 AR-1260-1	7.269	6.243	8573194	180.1E6	6.983	54.340 #
32) L7 AR-1260-2	7.575	6.429	68742438	174.2E6	43.832	41.457
33) L7 AR-1260-3	7.934	6.753	48734587	213.3E6	39.964	51.675 #
34) L7 AR-1260-4	8.162	7.045	61254904	142.4E6	45.927	58.175 #
35) L7 AR-1260-5	8.485	7.284	124.2E6	339.4E6	42.256	60.972 #

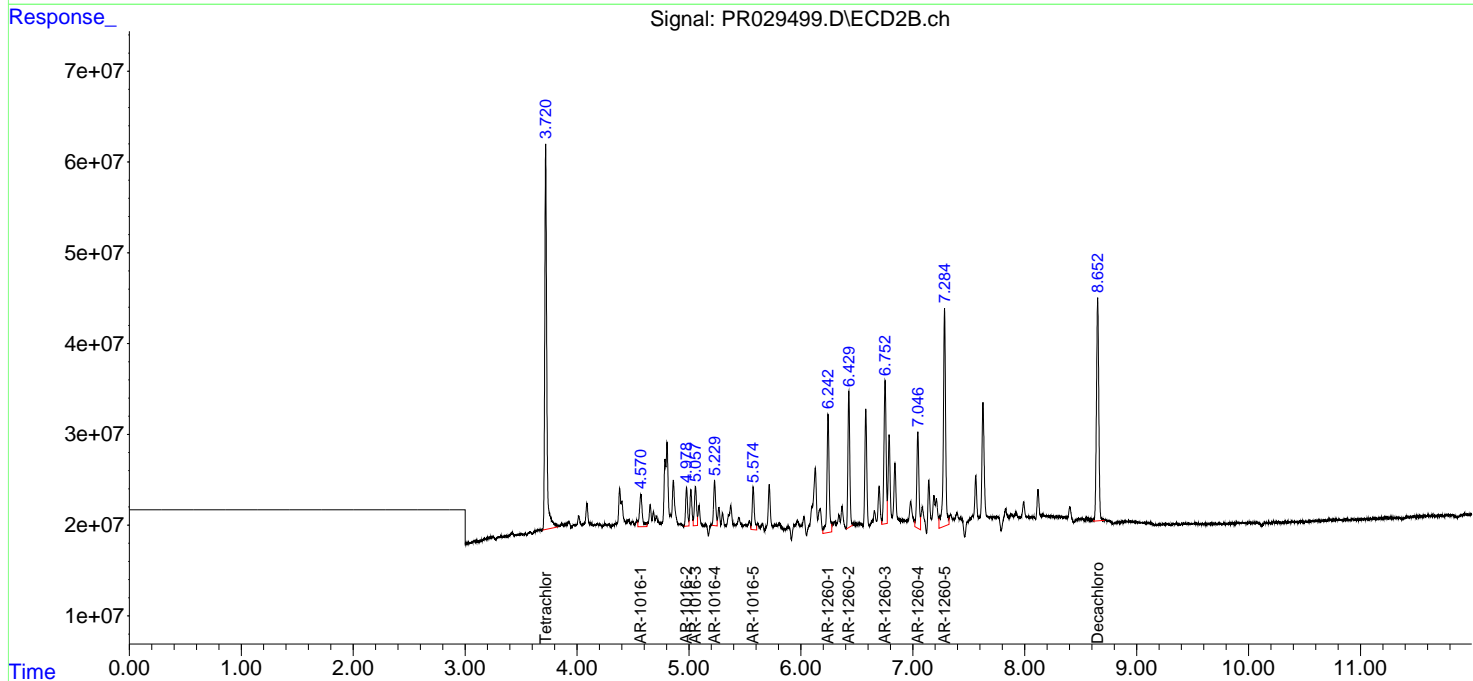
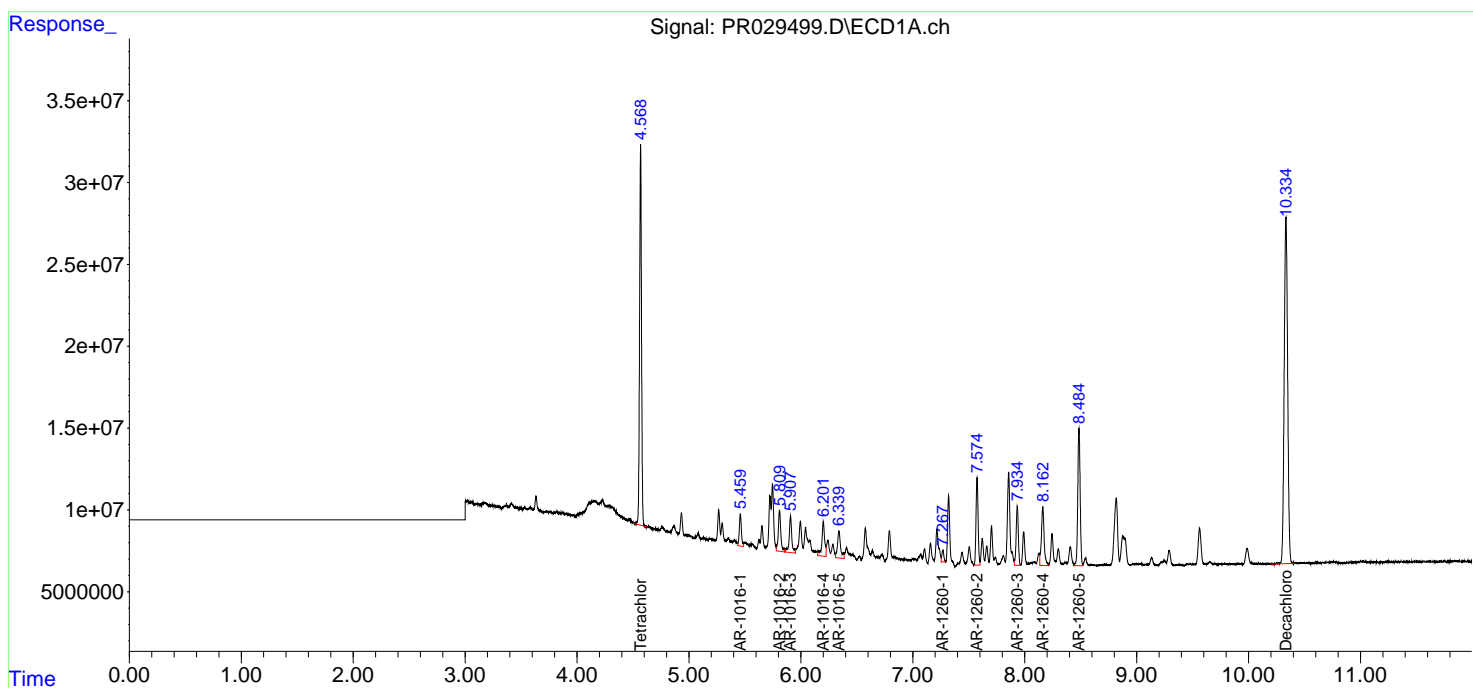
(f)=RT Delta > 1/2 Window (#)=Amounts differ by > 25% (m)=manual int.

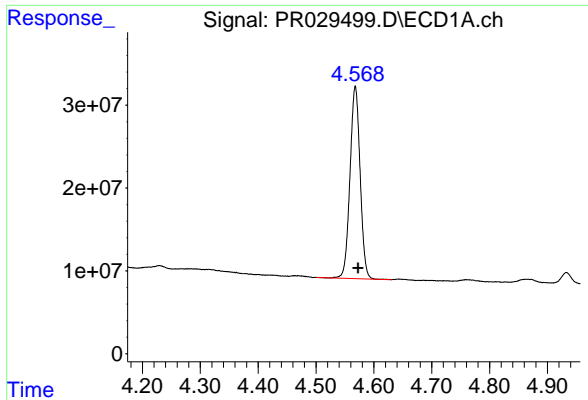
Data Path : Z:\pestpcbsrv\HPCHEM1\ECD_R\Data\PR062918\
 Data File : PR029499.D
 Signal(s) : Signal #1: ECD1A.ch Signal #2: ECD2B.ch
 Acq On : 25 Jun 2018 17:39
 Operator : UA/SM
 Sample : PB110515BS
 Misc :
 ALS Vial : 5 Sample Multiplier: 1

Instrument :
 ECD_R
 ClientSampled :
 PB110515BS

Integration File signal 1: autoint1.e
 Integration File signal 2: autoint2.e
 Quant Time: Jun 26 04:52:02 2018
 Quant Method : \\TERASTORAGE\Terastorage\pestpcbsrv\HPCHEM1\ECD_R\Method\PR062718.M
 Quant Title : GC EXTRACTABLES
 QLast Update : Sat Jun 23 08:41:26 2018
 Response via : Initial Calibration
 Integrator: ChemStation

Volume Inj. : 2 µl
 Signal #1 Phase : ZB-MR1 Signal #2 Phase: ZB-MR2
 Signal #1 Info : 30Mx0.32mmx 0.50µ Signal #2 Info : 30M x 0.32mm x 0.25µm

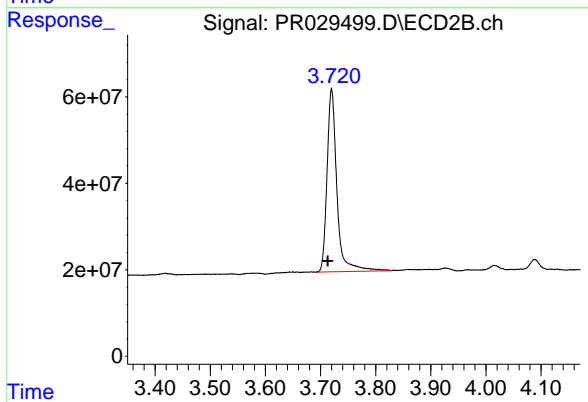




#1 Tetrachloro-m-xylene

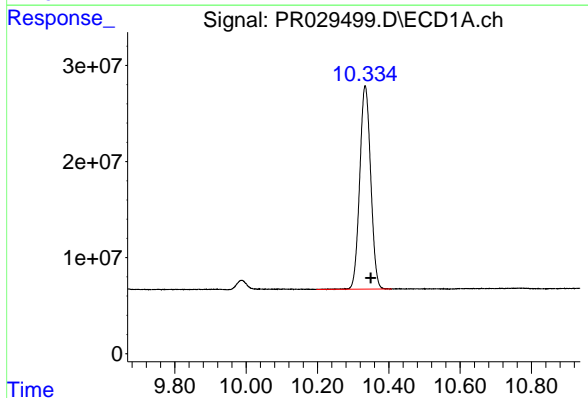
R.T.: 4.568 min
Delta R.T.: -0.005 min
Response: 281983182
Conc: 12.25 ng/ml

Instrument :
ECD_R
ClientSampleId :
PB110515BS



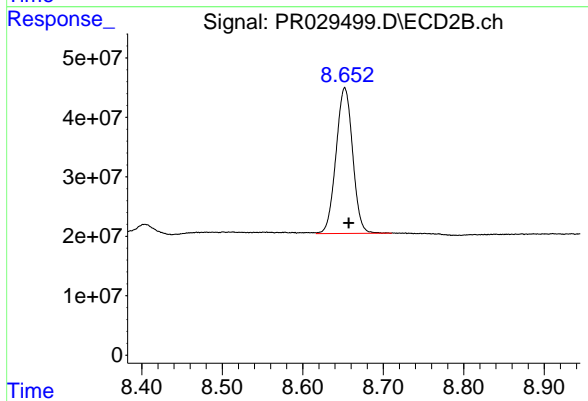
#1 Tetrachloro-m-xylene

R.T.: 3.720 min
Delta R.T.: 0.007 min
Response: 527621119
Conc: 11.16 ng/ml



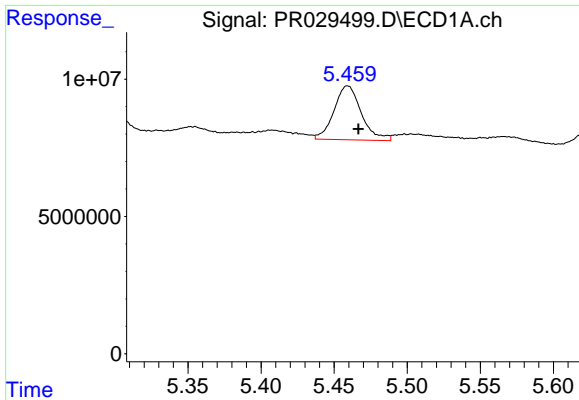
#2 Decachlorobiphenyl

R.T.: 10.334 min
Delta R.T.: -0.015 min
Response: 451055370
Conc: 16.11 ng/ml



#2 Decachlorobiphenyl

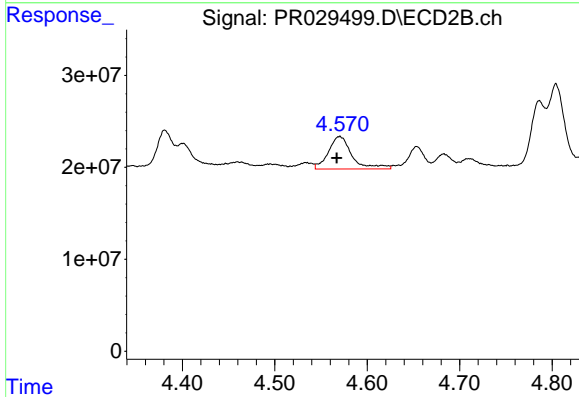
R.T.: 8.652 min
Delta R.T.: -0.005 min
Response: 351450549
Conc: 17.80 ng/ml



#3 AR-1016-1

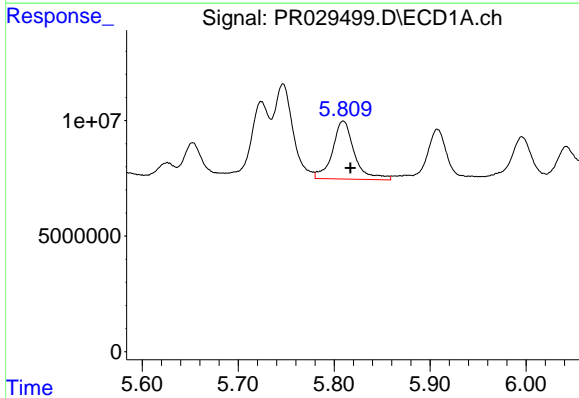
R.T.: 5.459 min
 Delta R.T.: -0.007 min
 Response: 25582893
 Conc: 44.51 ng/ml

Instrument :
 ECD_R
 ClientSampleId :
 PB110515BS



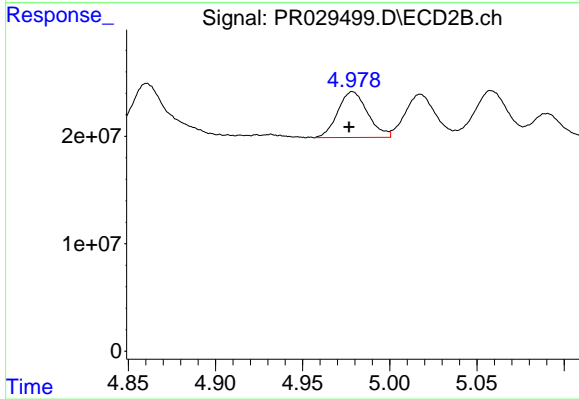
#3 AR-1016-1

R.T.: 4.570 min
 Delta R.T.: 0.003 min
 Response: 62557597
 Conc: 48.53 ng/ml



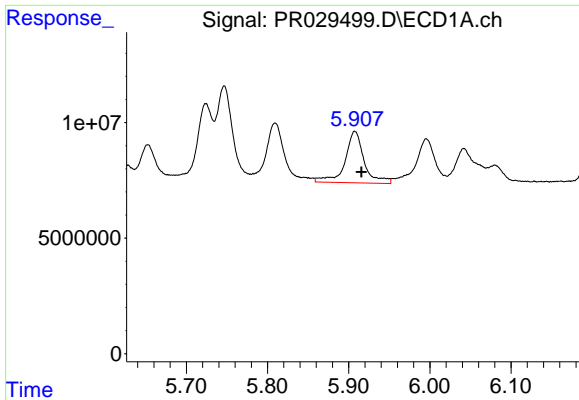
#4 AR-1016-2

R.T.: 5.809 min
 Delta R.T.: -0.007 min
 Response: 39939007
 Conc: 52.65 ng/ml



#4 AR-1016-2

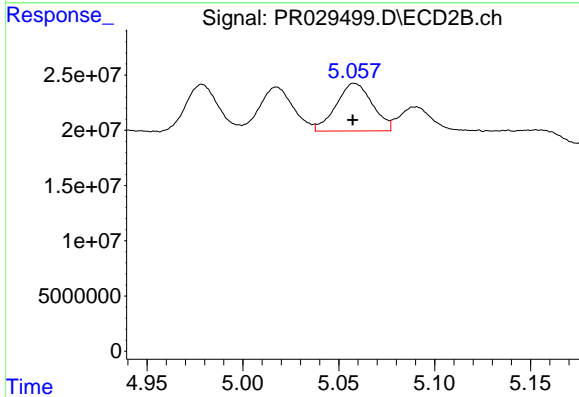
R.T.: 4.979 min
 Delta R.T.: 0.002 min
 Response: 50948070
 Conc: 38.51 ng/ml



#5 AR-1016-3

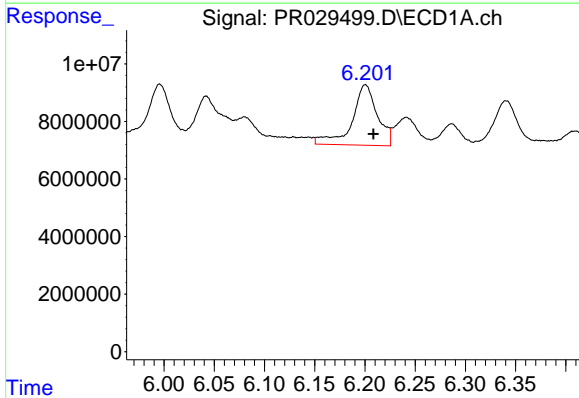
R.T.: 5.908 min
 Delta R.T.: -0.008 min
 Response: 36460958
 Conc: 57.22 ng/ml

Instrument :
 ECD_R
 ClientSampleId :
 PB110515BS



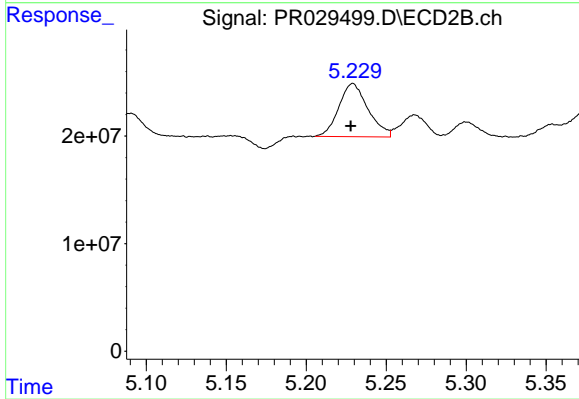
#5 AR-1016-3

R.T.: 5.058 min
 Delta R.T.: 0.000 min
 Response: 56804732
 Conc: 41.06 ng/ml



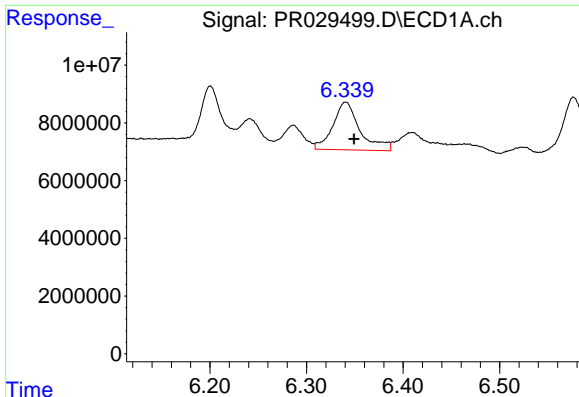
#6 AR-1016-4

R.T.: 6.200 min
 Delta R.T.: -0.008 min
 Response: 36853641
 Conc: 61.03 ng/ml



#6 AR-1016-4

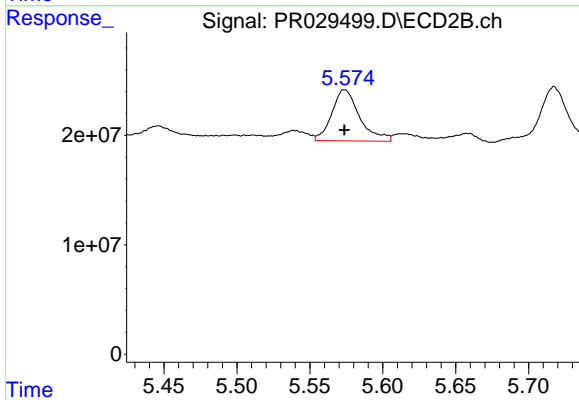
R.T.: 5.229 min
 Delta R.T.: 0.001 min
 Response: 62838935
 Conc: 41.24 ng/ml



#7 AR-1016-5

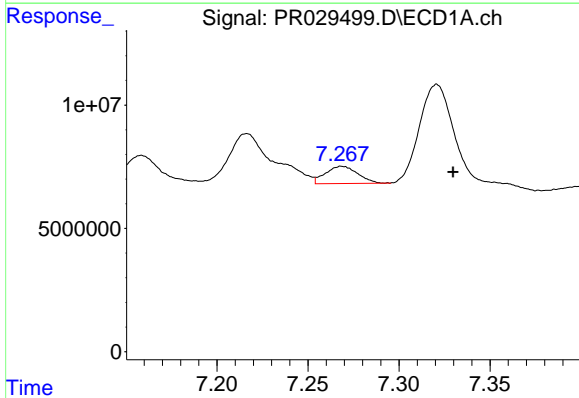
R.T.: 6.341 min
 Delta R.T.: -0.009 min
 Response: 32258126
 Conc: 48.93 ng/ml

Instrument :
 ECD_R
 ClientSampleId :
 PB110515BS



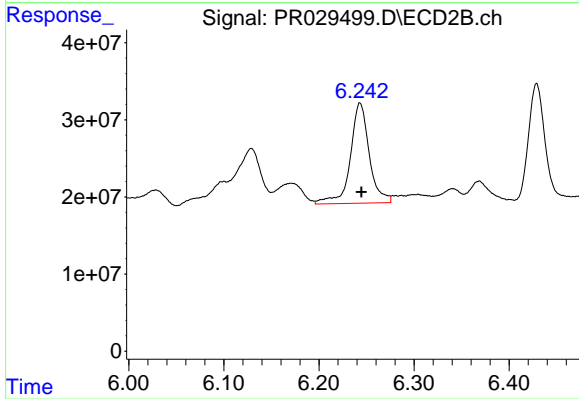
#7 AR-1016-5

R.T.: 5.574 min
 Delta R.T.: 0.000 min
 Response: 62078114
 Conc: 39.18 ng/ml



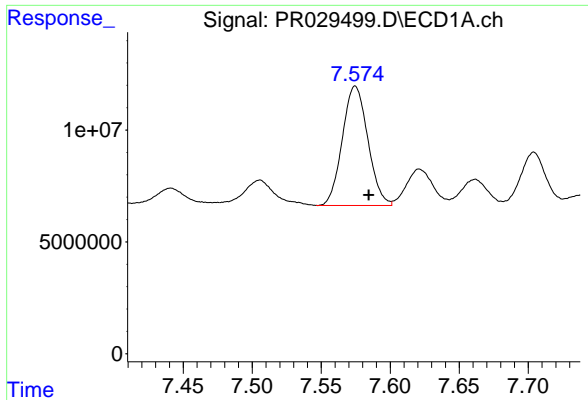
#31 AR-1260-1

R.T.: 7.269 min
 Delta R.T.: -0.061 min
 Response: 8573194
 Conc: 6.98 ng/ml



#31 AR-1260-1

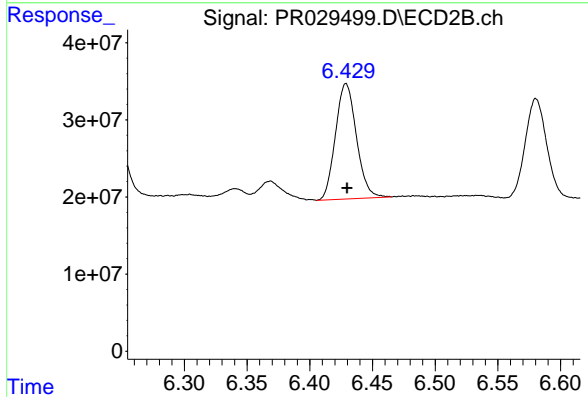
R.T.: 6.243 min
 Delta R.T.: -0.002 min
 Response: 180061792
 Conc: 54.34 ng/ml



#32 AR-1260-2

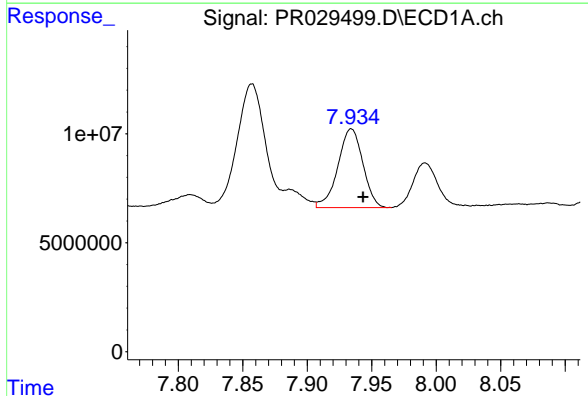
R.T.: 7.575 min
Delta R.T.: -0.010 min
Response: 68742438
Conc: 43.83 ng/ml

Instrument :
ECD_R
ClientSampleId :
PB110515BS



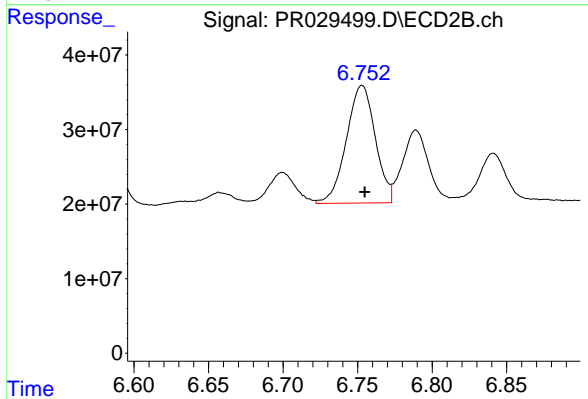
#32 AR-1260-2

R.T.: 6.429 min
Delta R.T.: 0.000 min
Response: 174181448
Conc: 41.46 ng/ml



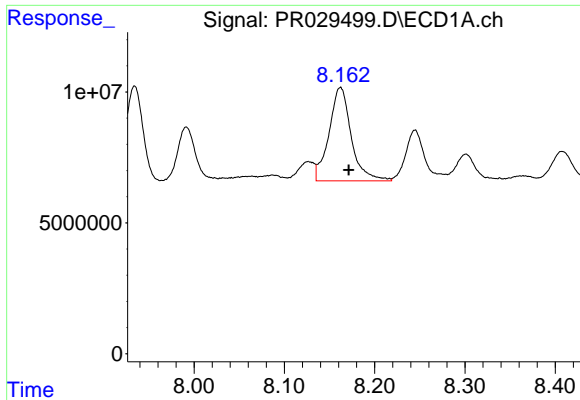
#33 AR-1260-3

R.T.: 7.934 min
Delta R.T.: -0.009 min
Response: 48734587
Conc: 39.96 ng/ml



#33 AR-1260-3

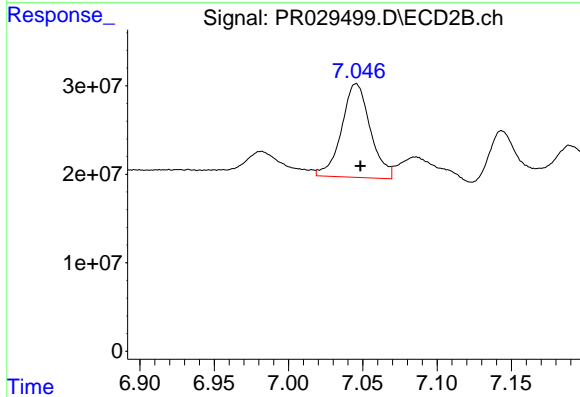
R.T.: 6.753 min
Delta R.T.: -0.002 min
Response: 213346224
Conc: 51.68 ng/ml



#34 AR-1260-4

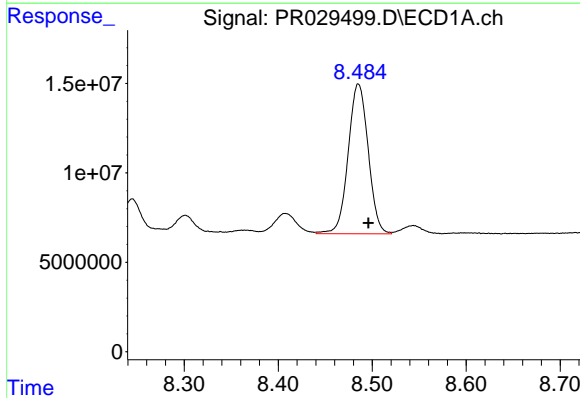
R.T.: 8.162 min
Delta R.T.: -0.009 min
Response: 61254904
Conc: 45.93 ng/ml

Instrument :
ECD_R
ClientSampleId :
PB110515BS



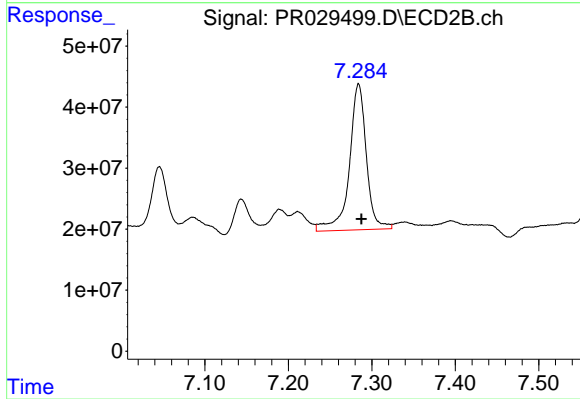
#34 AR-1260-4

R.T.: 7.045 min
Delta R.T.: -0.003 min
Response: 142415580
Conc: 58.18 ng/ml



#35 AR-1260-5

R.T.: 8.485 min
Delta R.T.: -0.011 min
Response: 124193262
Conc: 42.26 ng/ml



#35 AR-1260-5

R.T.: 7.284 min
Delta R.T.: -0.003 min
Response: 339432086
Conc: 60.97 ng/ml