

Data Path : Z:\pestpcbsrv\HPCHEM1\ECD_Q\Data\PQ070218\
 Data File : PQ030271.D
 Signal(s) : Signal #1: ECD1A.ch Signal #2: ECD2B.ch
 Acq On : 30 Jun 2018 16:24
 Operator : UA/SM
 Sample : J3748-07RE
 Misc :
 ALS Vial : 9 Sample Multiplier: 1

Instrument :
 ECD_R
 ClientSampled :

Integration File signal 1: autoint1.e
 Integration File signal 2: autoint2.e
 Quant Time: Jul 02 05:30:37 2018
 Quant Method : \\TERASTORAGE\Terastorage\pestpcbsrv\HPCHEM1\ECD_Q\Method\PQ062918.M
 Quant Title : GC EXTRACTABLES
 QLast Update : Fri Jun 29 01:53:51 2018
 Response via : Initial Calibration
 Integrator: ChemStation

Volume Inj. : 2 µl
 Signal #1 Phase : ZB-MR1 Signal #2 Phase: ZB-MR2
 Signal #1 Info : 30Mx0.32mmx 0.50µ Signal #2 Info : 30M x 0.32mm x 0.25µm

Compound	RT#1	RT#2	Resp#1	Resp#2	ng/ml	ng/ml
System Monitoring Compounds						
1) SA Tetrachlo...	4.460	3.739	402.9E6	197.7E6	9.599	14.365 #
2) SA Decachlor...	10.116	8.674	357.3E6	204.4E6	10.111	10.012
Target Compounds						
3) L1 AR-1016-1	4.769	4.528	24717533	506.0E6	35.385	1336.826 #
4) L1 AR-1016-2	5.320	5.003	6507915	398.5E6	6.916	1030.671 #
5) L1 AR-1016-3	5.684	5.003	19119943	398.5E6	14.552	1308.790 #
6) L1 AR-1016-4	5.800	5.055	331.4E6	469.8E6	300.493	1149.815 #
7) L1 AR-1016-5	6.232	5.196	406.5E6	55659010	369.595	133.795 #
8) L2 AR-1221-1	4.669	3.899	155.8E6	6654429	277.588	39.574 #
9) L2 AR-1221-2	4.769	4.018	24717533	18188459	66.187	148.764 #
10) L2 AR-1221-3	4.769	4.059	24717533	55184381	22.080	142.660 #
11) L3 AR-1232-1	4.769	4.059	24717533	55184381	33.561	225.881 #
12) L3 AR-1232-2	5.320	4.825	6507915	713.8E6	17.277	3315.127 #
13) L3 AR-1232-3	5.684	5.003	19119943	398.5E6	33.456	2835.483 #
14) L3 AR-1232-4	5.800	5.196	331.4E6	55659010	729.554	447.319 #
15) L3 AR-1232-5	6.094	5.559	183.6E6	217.1E6	474.655	1128.011 #
16) L4 AR-1242-1	5.320	4.528	6507915	506.0E6	8.532	1771.818 #
17) L4 AR-1242-2	5.613	4.825	46747941	713.8E6	40.347	1176.727 #
18) L4 AR-1242-3	5.684	5.003	19119943	398.5E6	18.476	1333.205 #
19) L4 AR-1242-4	6.094	5.055	183.6E6	469.8E6	215.047	1513.880 #
20) L4 AR-1242-5	6.232	5.196	406.5E6	55659010	436.740	171.883 #
21) L5 AR-1248-1	6.094	5.003	183.6E6	398.5E6	121.818	991.511 #
22) L5 AR-1248-2	6.195	5.055	229.4E6	469.8E6	182.068	1058.932 #
23) L5 AR-1248-3	6.448	5.196	-56381449	55659010	N.D.	112.033 #
24) L5 AR-1248-4	6.488	5.559	537.7E6	217.1E6	333.181	259.599
25) L5 AR-1248-5	6.690	5.559	278.0E6	217.1E6	164.747	259.599 #
26) L6 AR-1254-1	6.448	5.559	-56381449	217.1E6	N.D.	242.573 #
27) L6 AR-1254-2	6.638	5.760	593.1E6	352.5E6	229.175	469.782 #
28) L6 AR-1254-3	7.045	6.086	321.8E6	163.2E6	114.538	128.407
29) L6 AR-1254-4	7.321	6.368	317.7E6	236.8E6	159.510	270.128 #
30) L6 AR-1254-5	7.734	6.607	212.0E6	147.6E6	85.527	278.960 #
31) L7 AR-1260-1	7.206	6.234	127.4E6	46197368	63.514	46.439 #
32) L7 AR-1260-2	7.456	6.607	192.3E6	147.6E6	81.036	128.657 #
33) L7 AR-1260-3	7.734	7.054	212.0E6	213.6E6	75.172	229.014 #
34) L7 AR-1260-4	8.020	7.274	165.6E6	588.0E6	82.746	241.888 #
35) L7 AR-1260-5	8.342	7.659	180.5E6	311.0E6	45.308	177.608 #
36) L8 AR-1262-1	7.206	6.234	127.4E6	46197368	89.338	60.434 #
37) L8 AR-1262-2	7.456	6.458	192.3E6	129.3E6	104.800	127.693
38) L8 AR-1262-3	7.793	6.810	304.8E6	153.5E6	132.684	121.922
39) L8 AR-1262-4	8.020	7.054	165.6E6	213.6E6	75.140	197.663 #
40) L8 AR-1262-5	8.342	7.274	180.5E6	588.0E6	36.090	242.723 #
41) L9 AR-1268-1	8.662	7.556	60177014	143.9E6	14.204	60.239 #

Data Path : Z:\pestpcbsrv\HPCHEM1\ECD_Q\Data\PQ070218\
 Data File : PQ030271.D
 Signal(s) : Signal #1: ECD1A.ch Signal #2: ECD2B.ch
 Acq On : 30 Jun 2018 16:24
 Operator : UA/SM
 Sample : J3748-07RE
 Misc :
 ALS Vial : 9 Sample Multiplier: 1

Instrument :
 ECD_R
 ClientSampleId :

Integration File signal 1: autoint1.e
 Integration File signal 2: autoint2.e
 Quant Time: Jul 02 05:30:37 2018
 Quant Method : \\TERASTORAGE\Terastorage\pestpcbsrv\HPCHEM1\ECD_Q\Method\PQ062918.M
 Quant Title : GC EXTRACTABLES
 QLast Update : Fri Jun 29 01:53:51 2018
 Response via : Initial Calibration
 Integrator: ChemStation

Volume Inj. : 2 µl
 Signal #1 Phase : ZB-MR1 Signal #2 Phase: ZB-MR2
 Signal #1 Info : 30Mx0.32mmx 0.50µ Signal #2 Info : 30M x 0.32mm x 0.25µm

	Compound	RT#1	RT#2	Resp#1	Resp#2	ng/ml	ng/ml
42)	L9 AR-1268-2	8.756	7.659	106.5E6	311.0E6	27.564	128.869 #
43)	L9 AR-1268-3	8.974	7.842	53624761	28051755	16.476	14.344
44)	L9 AR-1268-4	9.378	8.097	22939205	52237868	14.839	62.319 #
45)	L9 AR-1268-5	9.841	8.427	56334501	18993999	5.363	2.988 #

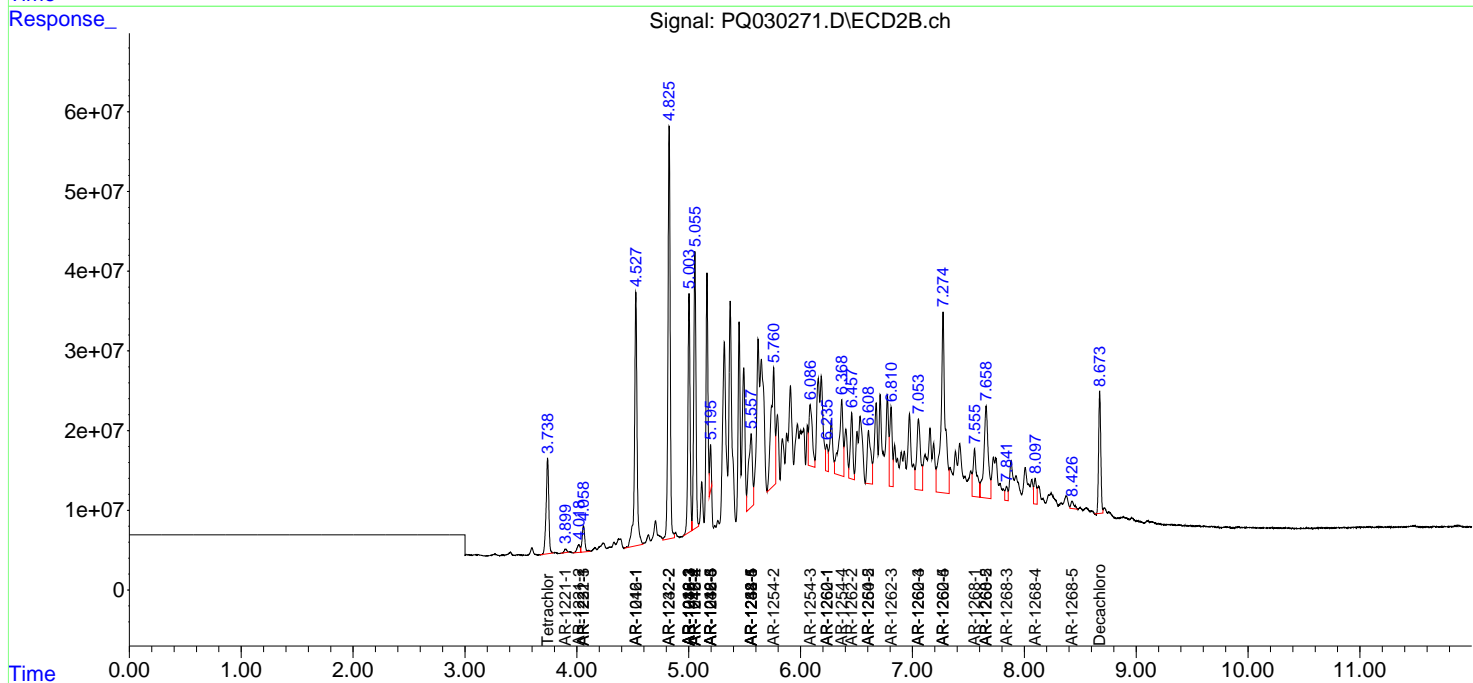
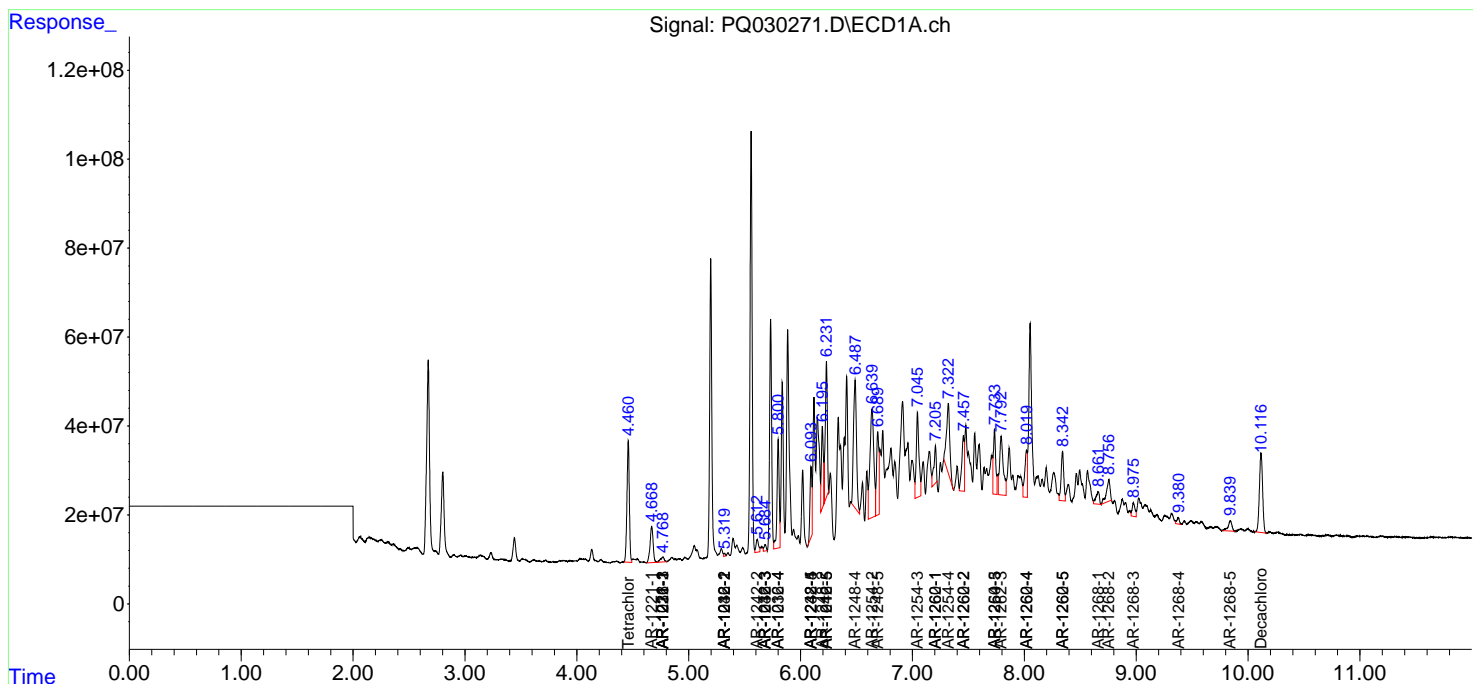
(f)=RT Delta > 1/2 Window (#)=Amounts differ by > 25% (m)=manual int.

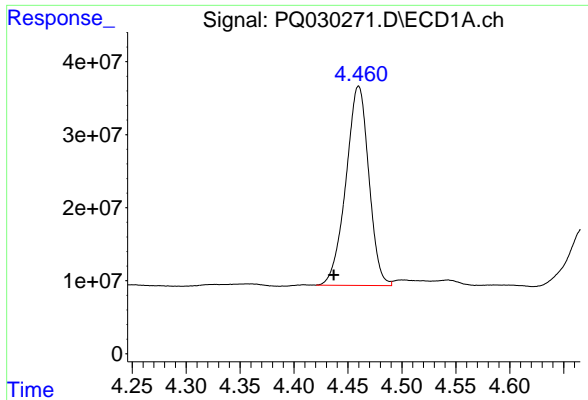
Data Path : Z:\pestpcbsrv\HPCHEM1\ECD_Q\Data\PQ070218\
 Data File : PQ030271.D
 Signal(s) : Signal #1: ECD1A.ch Signal #2: ECD2B.ch
 Acq On : 30 Jun 2018 16:24
 Operator : UA/SM
 Sample : J3748-07RE
 Misc :
 ALS Vial : 9 Sample Multiplier: 1

Instrument :
 ECD_R
 ClientSampled :

Integration File signal 1: autoint1.e
 Integration File signal 2: autoint2.e
 Quant Time: Jul 02 05:30:37 2018
 Quant Method : \\TERASTORAGE\Terastorage\pestpcbsrv\HPCHEM1\ECD_Q\Method\PQ062918.M
 Quant Title : GC EXTRACTABLES
 QLast Update : Fri Jun 29 01:53:51 2018
 Response via : Initial Calibration
 Integrator: ChemStation

Volume Inj. : 2 µl
 Signal #1 Phase : ZB-MR1 Signal #2 Phase: ZB-MR2
 Signal #1 Info : 30Mx0.32mmx 0.50µ Signal #2 Info : 30M x 0.32mm x 0.25µm

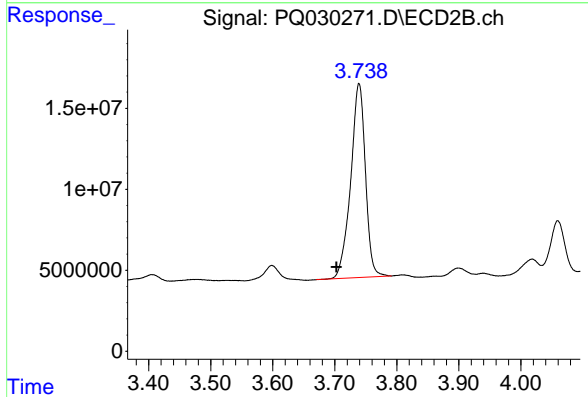




#1 Tetrachloro-m-xylene

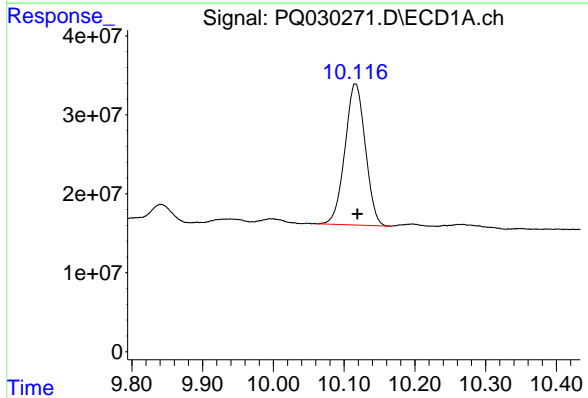
R.T.: 4.460 min
 Delta R.T.: 0.023 min
 Response: 402891451
 Conc: 9.60 ng/ml

Instrument :
 ECD_R
 ClientSampleId :



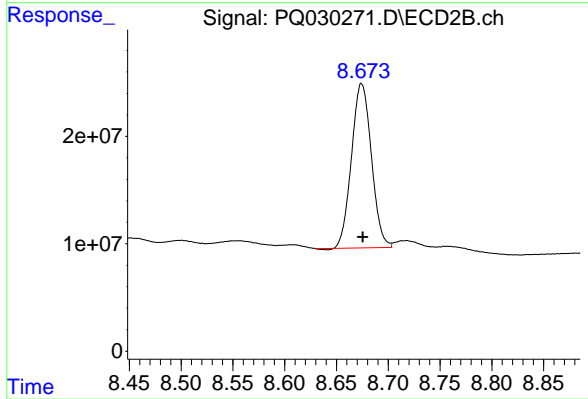
#1 Tetrachloro-m-xylene

R.T.: 3.739 min
 Delta R.T.: 0.037 min
 Response: 197686766
 Conc: 14.36 ng/ml



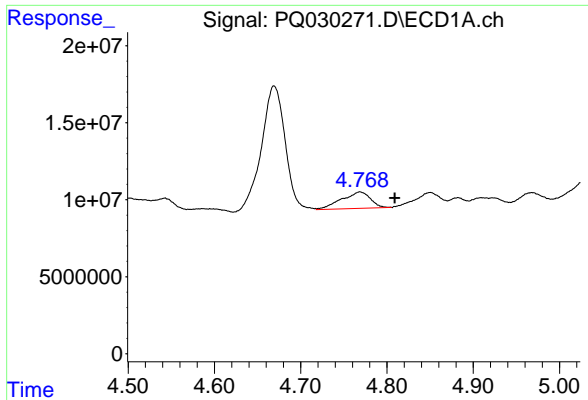
#2 Decachlorobiphenyl

R.T.: 10.116 min
 Delta R.T.: -0.003 min
 Response: 357253656
 Conc: 10.11 ng/ml



#2 Decachlorobiphenyl

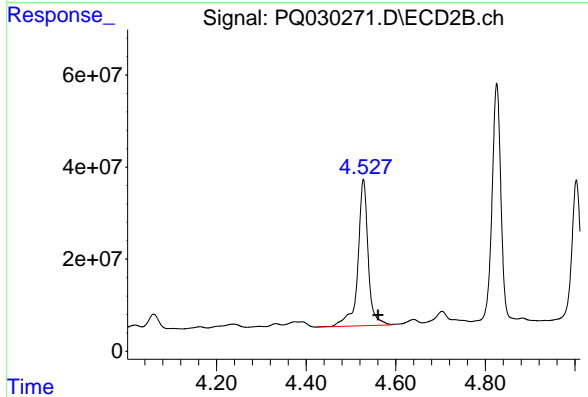
R.T.: 8.674 min
 Delta R.T.: -0.001 min
 Response: 204401578
 Conc: 10.01 ng/ml



#3 AR-1016-1

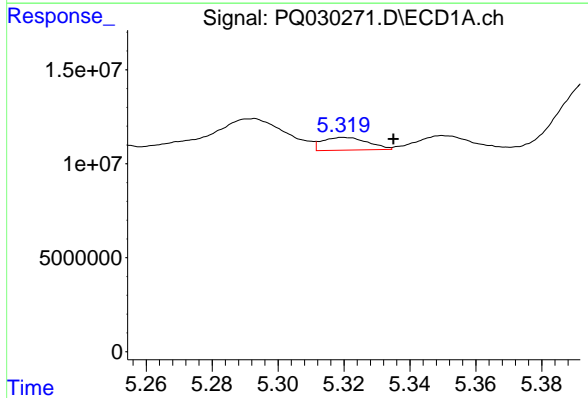
R.T.: 4.769 min
 Delta R.T.: -0.040 min
 Response: 24717533
 Conc: 35.39 ng/ml

Instrument :
 ECD_R
 ClientSampled :



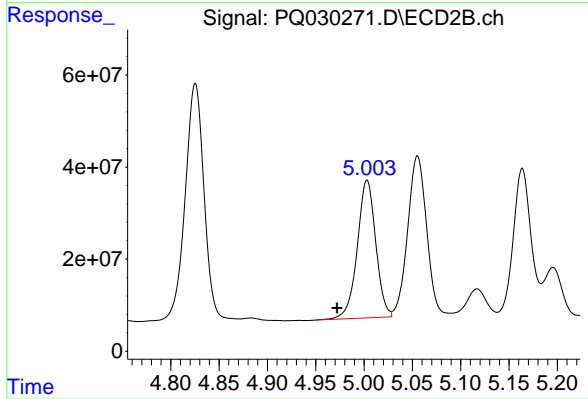
#3 AR-1016-1

R.T.: 4.528 min
 Delta R.T.: -0.033 min
 Response: 506032144
 Conc: 1336.83 ng/ml



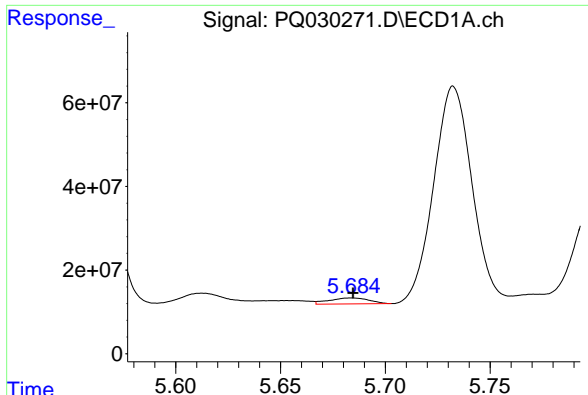
#4 AR-1016-2

R.T.: 5.320 min
 Delta R.T.: -0.015 min
 Response: 6507915
 Conc: 6.92 ng/ml



#4 AR-1016-2

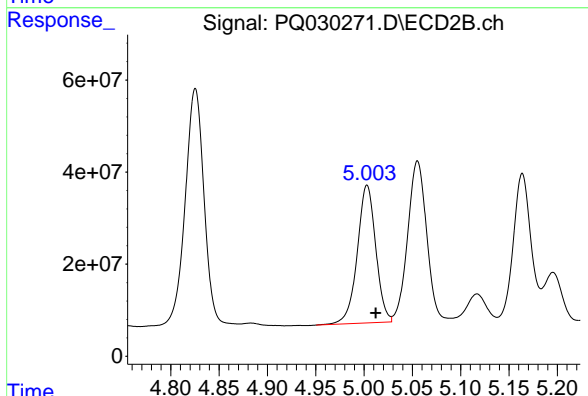
R.T.: 5.003 min
 Delta R.T.: 0.031 min
 Response: 398476539
 Conc: 1030.67 ng/ml



#5 AR-1016-3

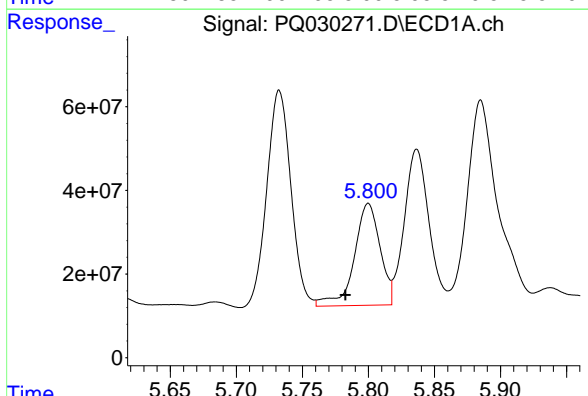
R.T.: 5.684 min
 Delta R.T.: 0.000 min
 Response: 19119943
 Conc: 14.55 ng/ml

Instrument :
 ECD_R
 ClientSampled :



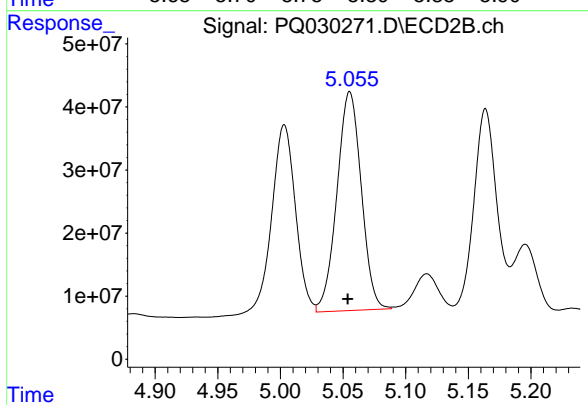
#5 AR-1016-3

R.T.: 5.003 min
 Delta R.T.: -0.009 min
 Response: 398476539
 Conc: 1308.79 ng/ml



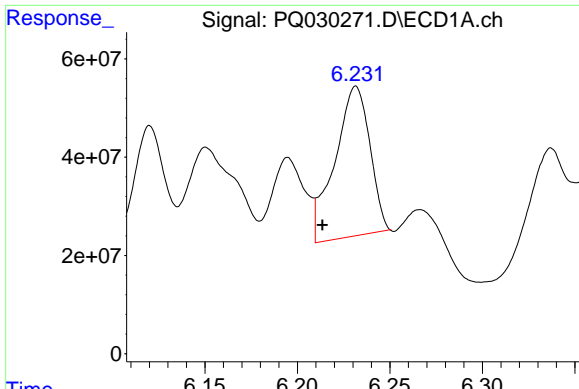
#6 AR-1016-4

R.T.: 5.800 min
 Delta R.T.: 0.017 min
 Response: 331360155
 Conc: 300.49 ng/ml



#6 AR-1016-4

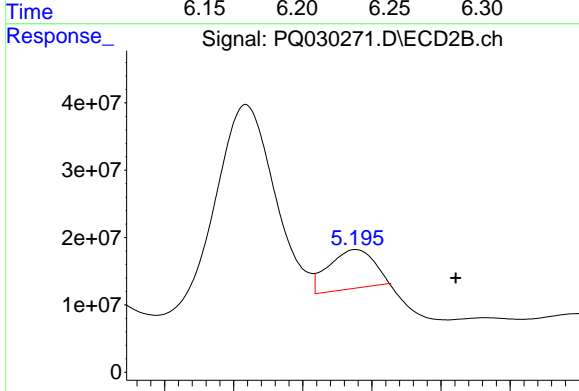
R.T.: 5.055 min
 Delta R.T.: 0.002 min
 Response: 469772981
 Conc: 1149.81 ng/ml



#7 AR-1016-5

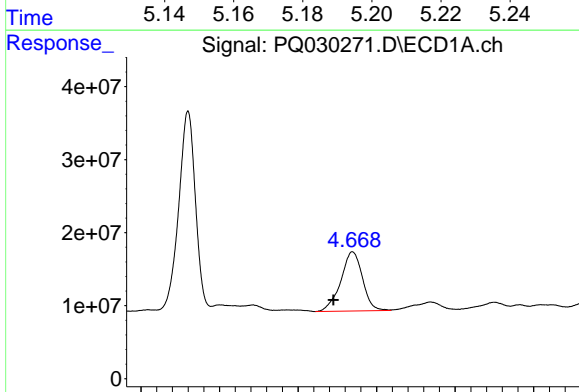
R.T.: 6.232 min
 Delta R.T.: 0.018 min
 Response: 406455682
 Conc: 369.59 ng/ml

Instrument :
 ECD_R
 ClientSampleId :



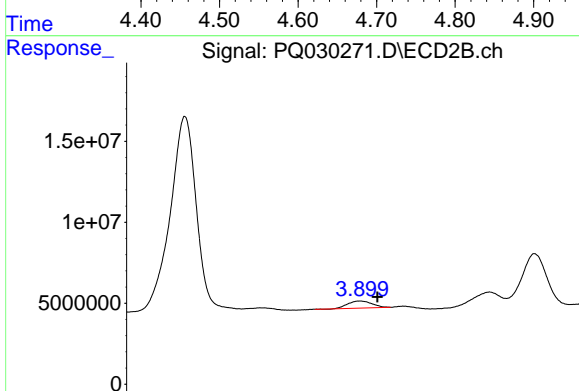
#7 AR-1016-5

R.T.: 5.196 min
 Delta R.T.: -0.029 min
 Response: 55659010
 Conc: 133.79 ng/ml



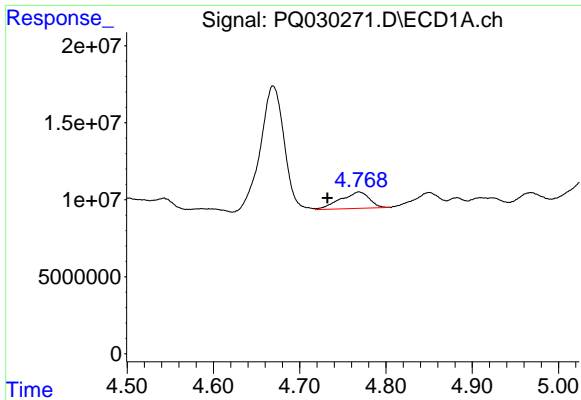
#8 AR-1221-1

R.T.: 4.669 min
 Delta R.T.: 0.024 min
 Response: 155798034
 Conc: 277.59 ng/ml



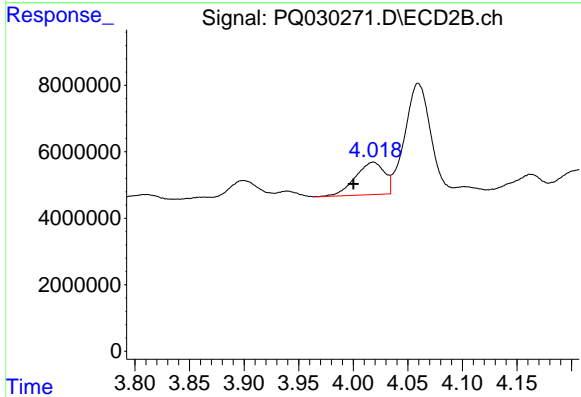
#8 AR-1221-1

R.T.: 3.899 min
 Delta R.T.: -0.016 min
 Response: 6654429
 Conc: 39.57 ng/ml

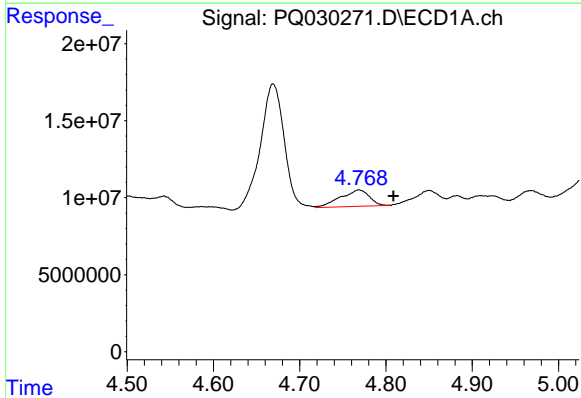


#9 AR-1221-2
 R.T.: 4.769 min
 Delta R.T.: 0.036 min
 Response: 24717533
 Conc: 66.19 ng/ml

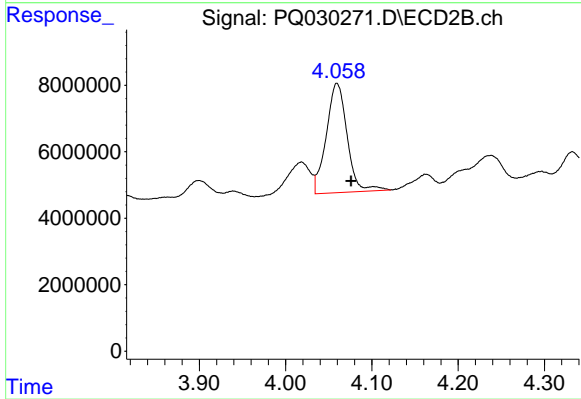
Instrument :
 ECD_R
 ClientSampled :



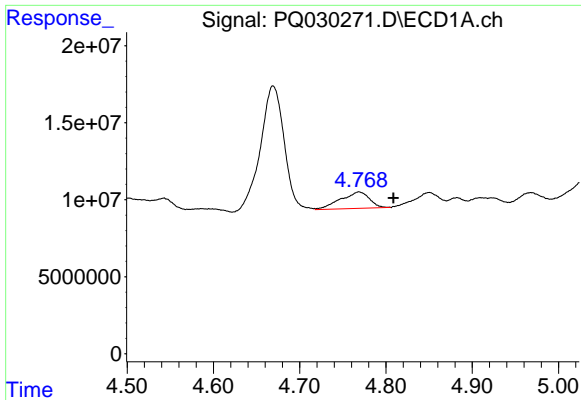
#9 AR-1221-2
 R.T.: 4.018 min
 Delta R.T.: 0.018 min
 Response: 18188459
 Conc: 148.76 ng/ml



#10 AR-1221-3
 R.T.: 4.769 min
 Delta R.T.: -0.040 min
 Response: 24717533
 Conc: 22.08 ng/ml



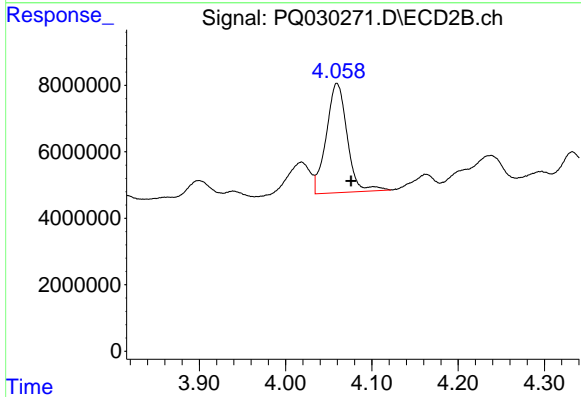
#10 AR-1221-3
 R.T.: 4.059 min
 Delta R.T.: -0.016 min
 Response: 55184381
 Conc: 142.66 ng/ml



#11 AR-1232-1

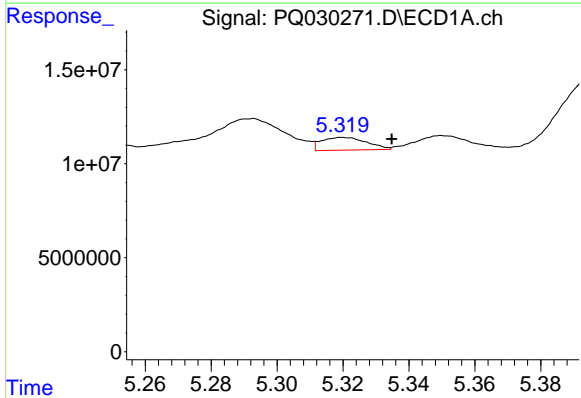
R.T.: 4.769 min
 Delta R.T.: -0.040 min
 Response: 24717533
 Conc: 33.56 ng/ml

Instrument :
 ECD_R
 ClientSampleId :



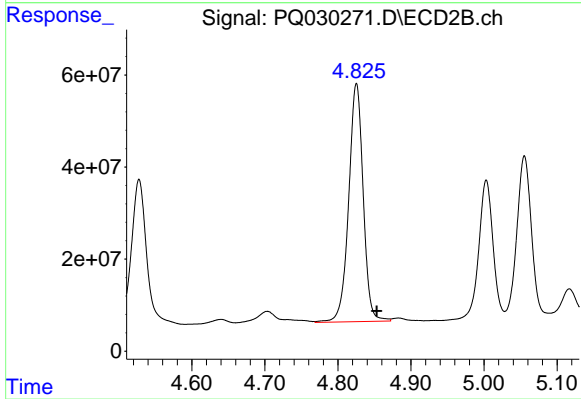
#11 AR-1232-1

R.T.: 4.059 min
 Delta R.T.: -0.016 min
 Response: 55184381
 Conc: 225.88 ng/ml



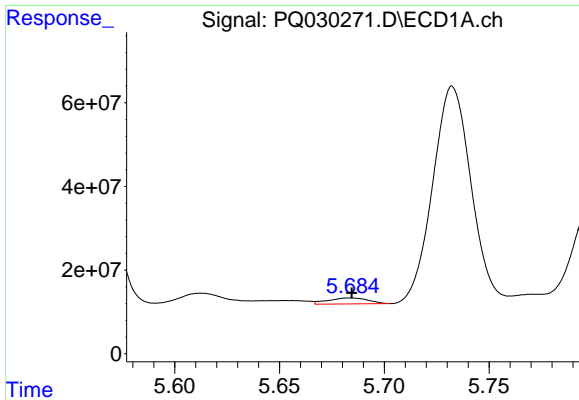
#12 AR-1232-2

R.T.: 5.320 min
 Delta R.T.: -0.015 min
 Response: 6507915
 Conc: 17.28 ng/ml



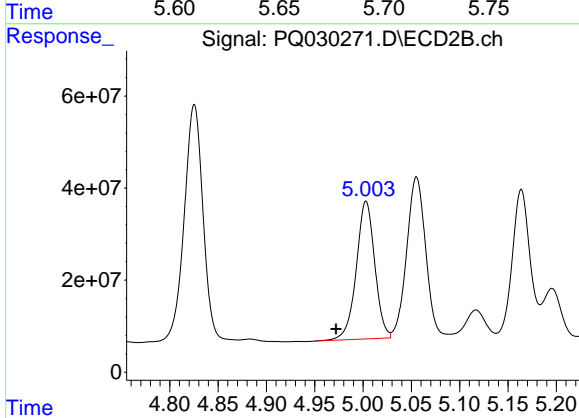
#12 AR-1232-2

R.T.: 4.825 min
 Delta R.T.: -0.028 min
 Response: 713836588
 Conc: 3315.13 ng/ml

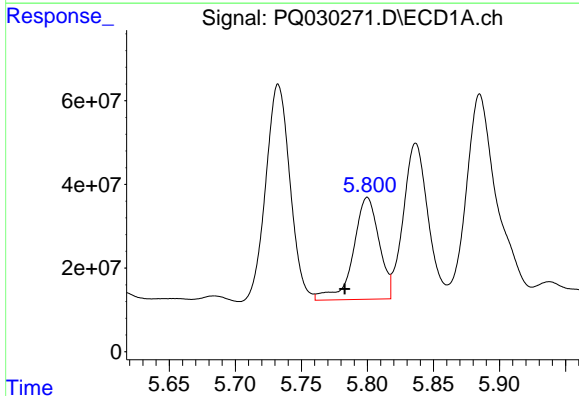


#13 AR-1232-3
 R.T.: 5.684 min
 Delta R.T.: 0.000 min
 Response: 19119943
 Conc: 33.46 ng/ml

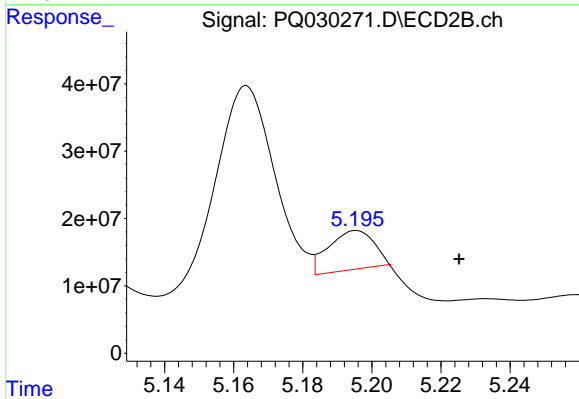
Instrument :
 ECD_R
 ClientSampleId :



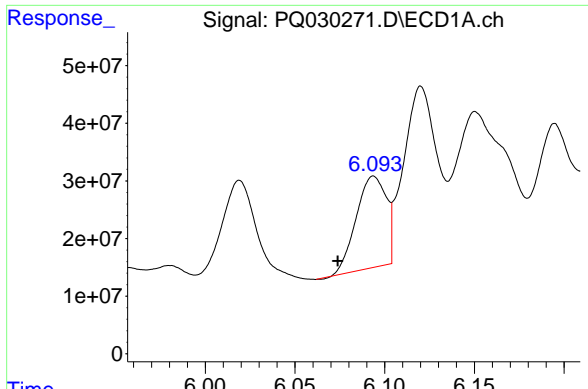
#13 AR-1232-3
 R.T.: 5.003 min
 Delta R.T.: 0.031 min
 Response: 398476539
 Conc: 2835.48 ng/ml



#14 AR-1232-4
 R.T.: 5.800 min
 Delta R.T.: 0.017 min
 Response: 331360155
 Conc: 729.55 ng/ml

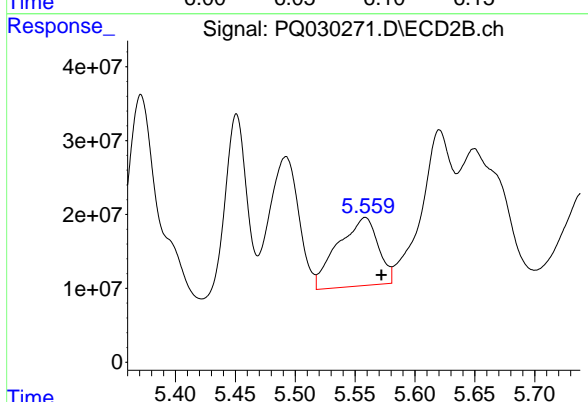


#14 AR-1232-4
 R.T.: 5.196 min
 Delta R.T.: -0.030 min
 Response: 55659010
 Conc: 447.32 ng/ml

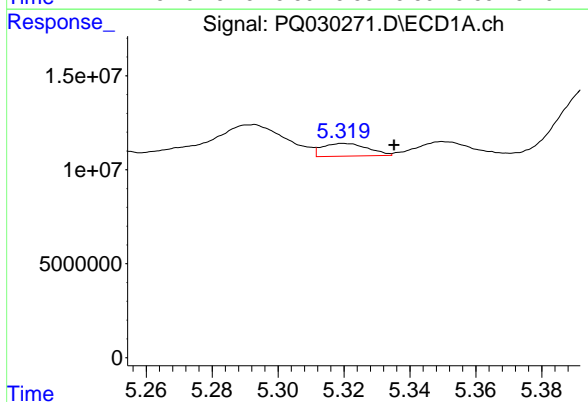


#15 AR-1232-5
 R.T.: 6.094 min
 Delta R.T.: 0.020 min
 Response: 183556790
 Conc: 474.66 ng/ml

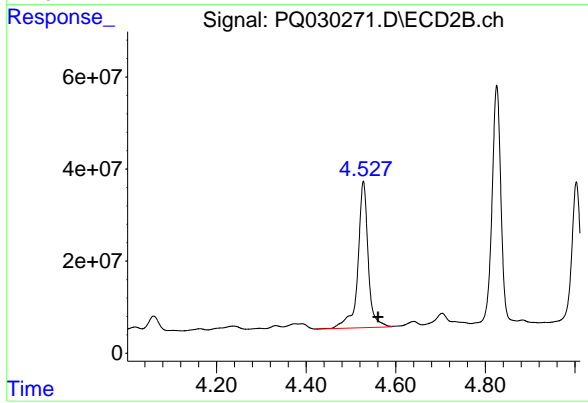
Instrument :
 ECD_R
 ClientSampleId :



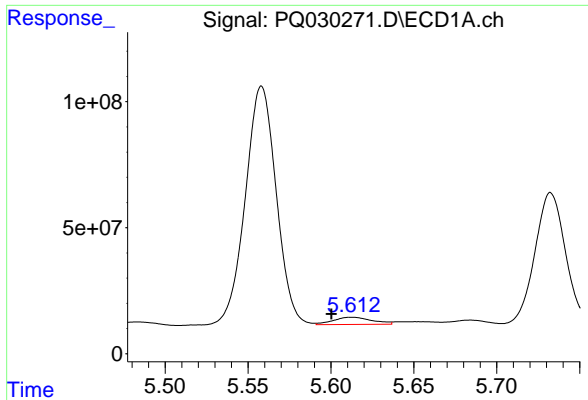
#15 AR-1232-5
 R.T.: 5.559 min
 Delta R.T.: -0.014 min
 Response: 217050171
 Conc: 1128.01 ng/ml



#16 AR-1242-1
 R.T.: 5.320 min
 Delta R.T.: -0.015 min
 Response: 6507915
 Conc: 8.53 ng/ml



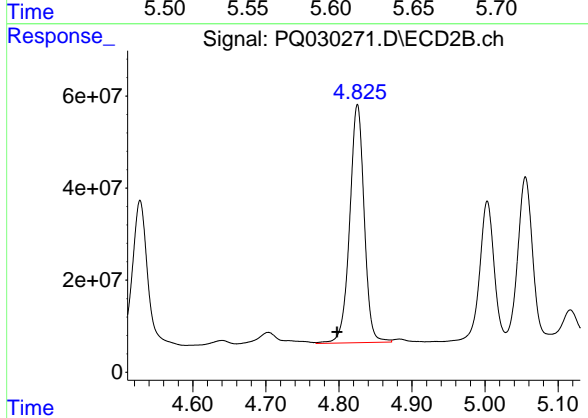
#16 AR-1242-1
 R.T.: 4.528 min
 Delta R.T.: -0.033 min
 Response: 506032144
 Conc: 1771.82 ng/ml



#17 AR-1242-2

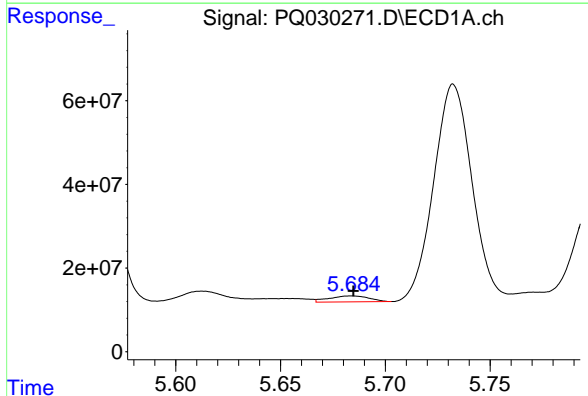
R.T.: 5.613 min
 Delta R.T.: 0.012 min
 Response: 46747941
 Conc: 40.35 ng/ml

Instrument :
 ECD_R
 ClientSampleId :



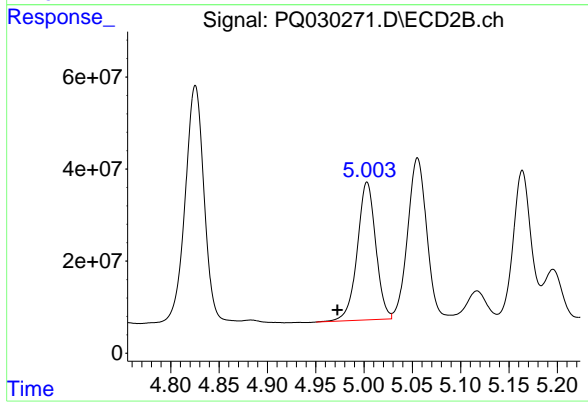
#17 AR-1242-2

R.T.: 4.825 min
 Delta R.T.: 0.028 min
 Response: 713836588
 Conc: 1176.73 ng/ml



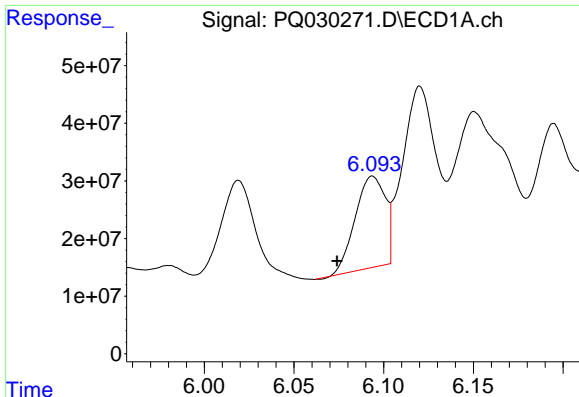
#18 AR-1242-3

R.T.: 5.684 min
 Delta R.T.: 0.000 min
 Response: 19119943
 Conc: 18.48 ng/ml



#18 AR-1242-3

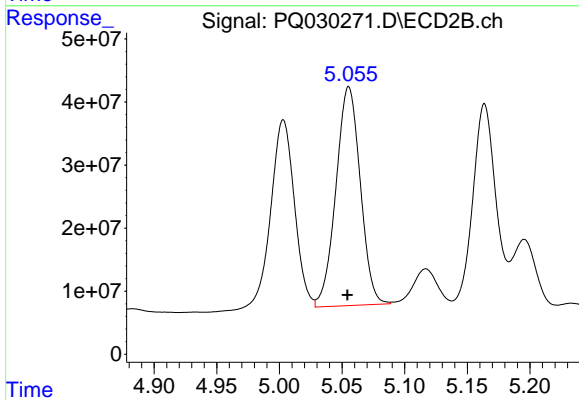
R.T.: 5.003 min
 Delta R.T.: 0.031 min
 Response: 398476539
 Conc: 1333.20 ng/ml



#19 AR-1242-4

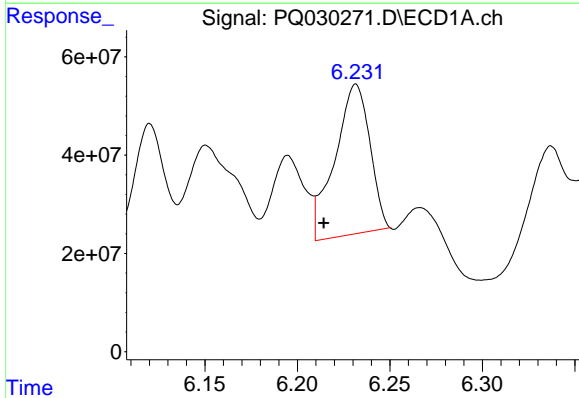
R.T.: 6.094 min
 Delta R.T.: 0.020 min
 Response: 183556790
 Conc: 215.05 ng/ml

Instrument :
 ECD_R
 ClientSampled :



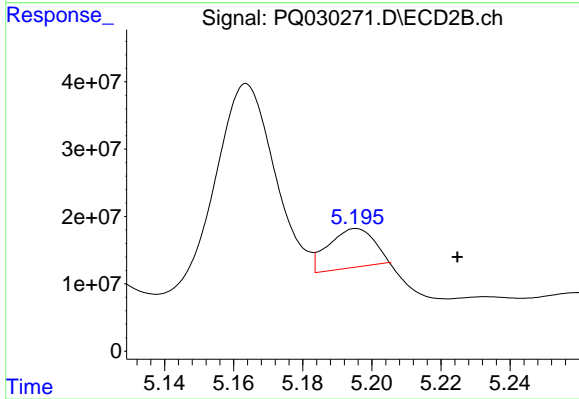
#19 AR-1242-4

R.T.: 5.055 min
 Delta R.T.: 0.001 min
 Response: 469772981
 Conc: 1513.88 ng/ml



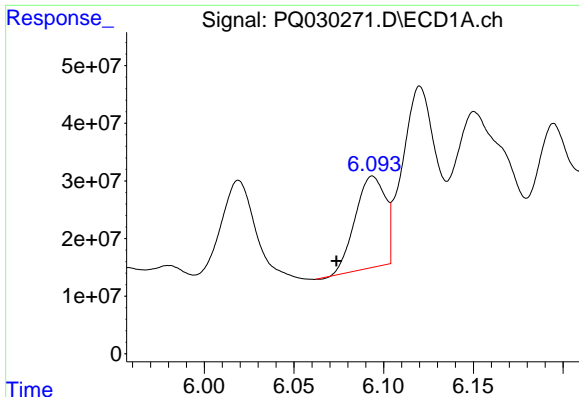
#20 AR-1242-5

R.T.: 6.232 min
 Delta R.T.: 0.017 min
 Response: 406455682
 Conc: 436.74 ng/ml



#20 AR-1242-5

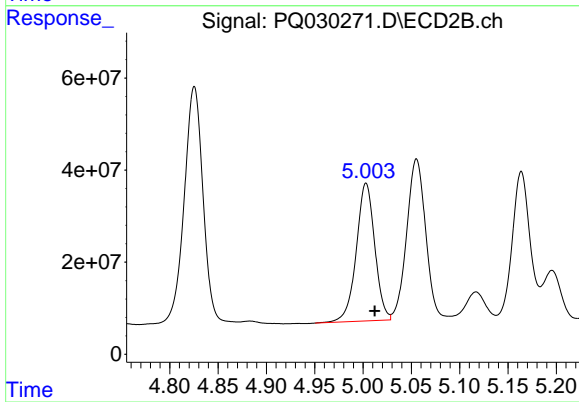
R.T.: 5.196 min
 Delta R.T.: -0.029 min
 Response: 55659010
 Conc: 171.88 ng/ml



#21 AR-1248-1

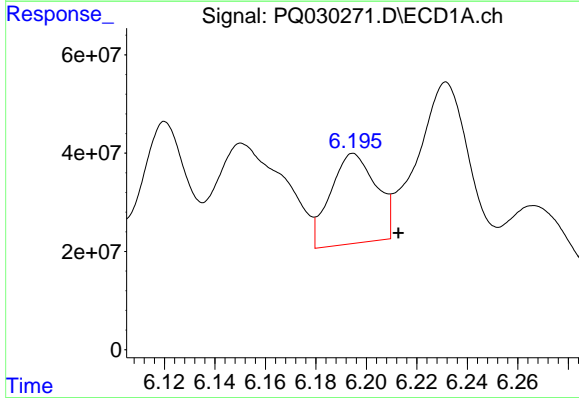
R.T.: 6.094 min
 Delta R.T.: 0.020 min
 Response: 183556790
 Conc: 121.82 ng/ml

Instrument :
 ECD_R
 ClientSampleId :



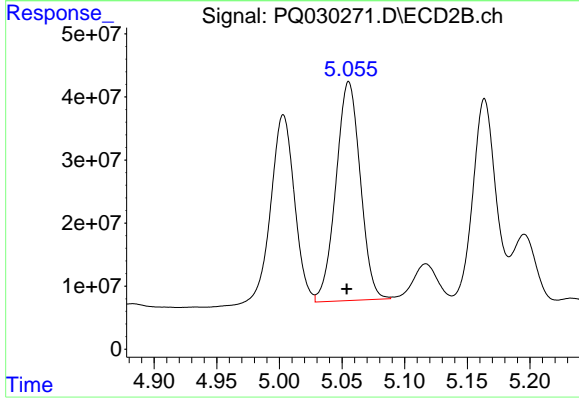
#21 AR-1248-1

R.T.: 5.003 min
 Delta R.T.: -0.009 min
 Response: 398476539
 Conc: 991.51 ng/ml



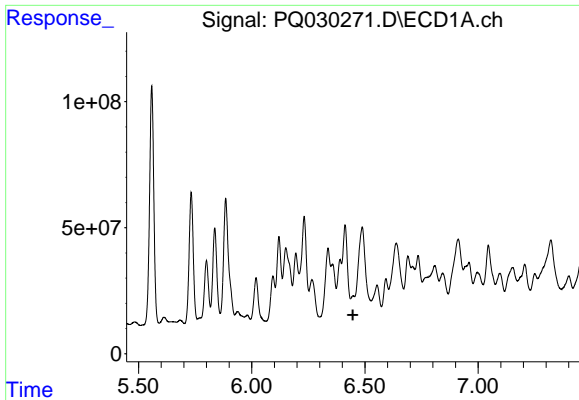
#22 AR-1248-2

R.T.: 6.195 min
 Delta R.T.: -0.018 min
 Response: 229388561
 Conc: 182.07 ng/ml



#22 AR-1248-2

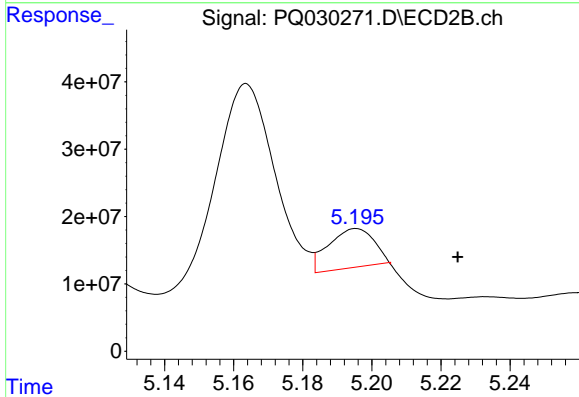
R.T.: 5.055 min
 Delta R.T.: 0.002 min
 Response: 469772981
 Conc: 1058.93 ng/ml



#23 AR-1248-3

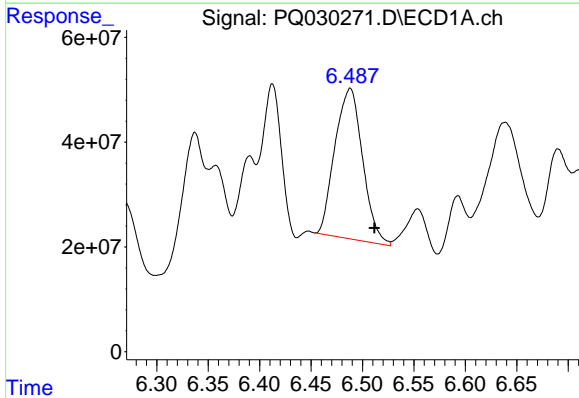
R.T.: 6.448 min
 Delta R.T.: 0.000 min
 Response: -56381449
 Conc: N.D.

Instrument :
 ECD_R
 ClientSampled :



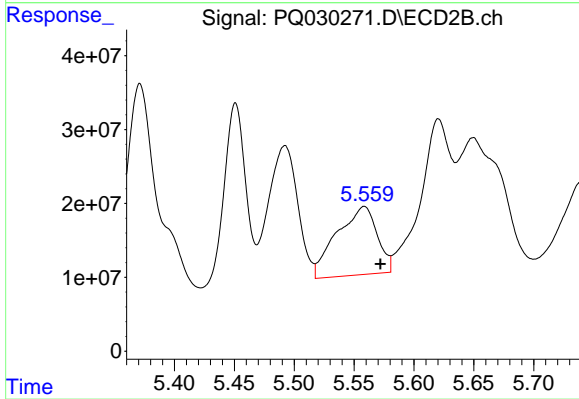
#23 AR-1248-3

R.T.: 5.196 min
 Delta R.T.: -0.029 min
 Response: 55659010
 Conc: 112.03 ng/ml



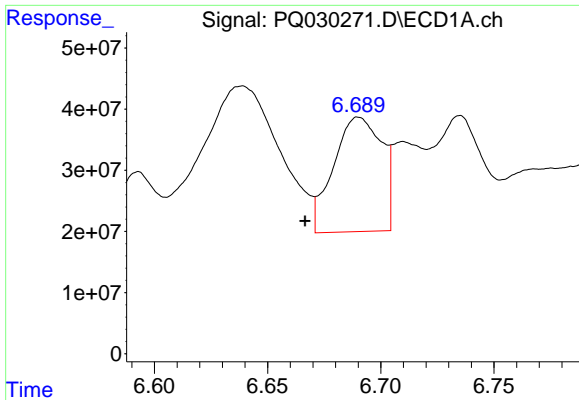
#24 AR-1248-4

R.T.: 6.488 min
 Delta R.T.: -0.023 min
 Response: 537662800
 Conc: 333.18 ng/ml



#24 AR-1248-4

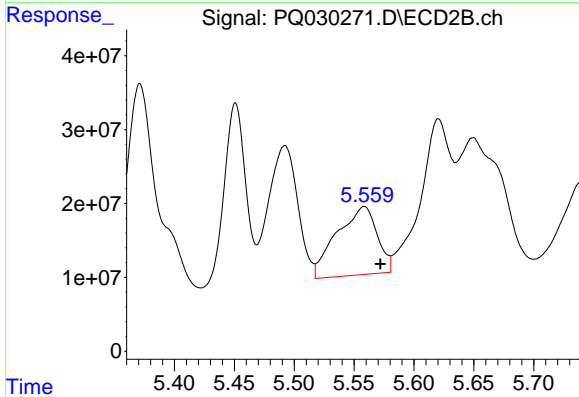
R.T.: 5.559 min
 Delta R.T.: -0.013 min
 Response: 217050171
 Conc: 259.60 ng/ml



#25 AR-1248-5

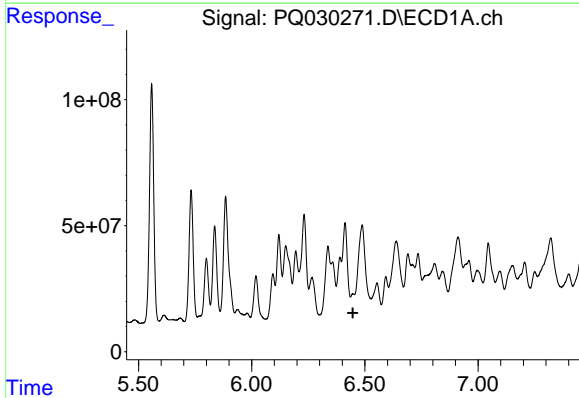
R.T.: 6.690 min
 Delta R.T.: 0.024 min
 Response: 278022032
 Conc: 164.75 ng/ml

Instrument :
 ECD_R
 ClientSampleId :



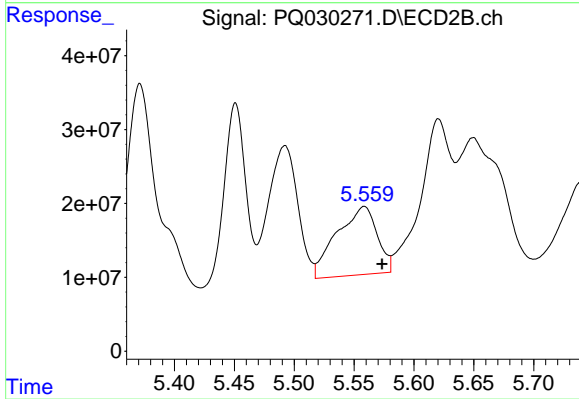
#25 AR-1248-5

R.T.: 5.559 min
 Delta R.T.: -0.013 min
 Response: 217050171
 Conc: 259.60 ng/ml



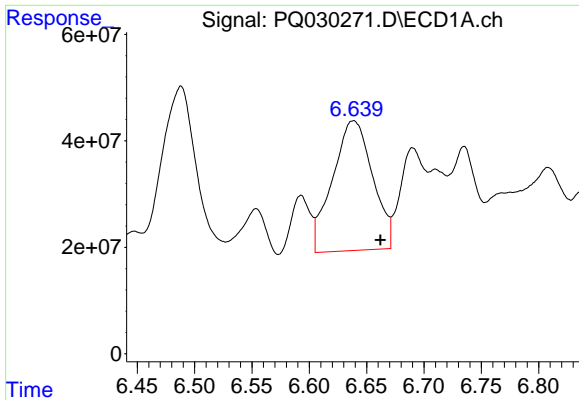
#26 AR-1254-1

R.T.: 6.448 min
 Delta R.T.: 0.000 min
 Response: -56381449
 Conc: N.D.



#26 AR-1254-1

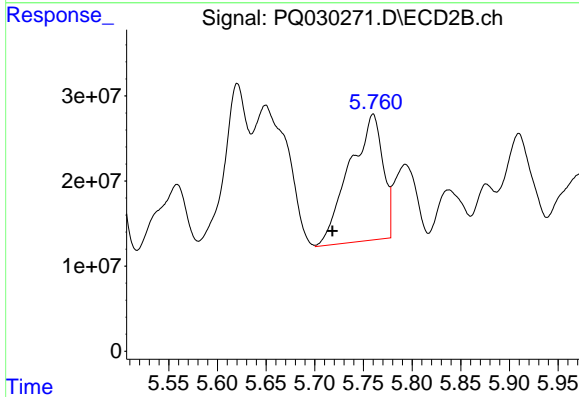
R.T.: 5.559 min
 Delta R.T.: -0.015 min
 Response: 217050171
 Conc: 242.57 ng/ml



#27 AR-1254-2

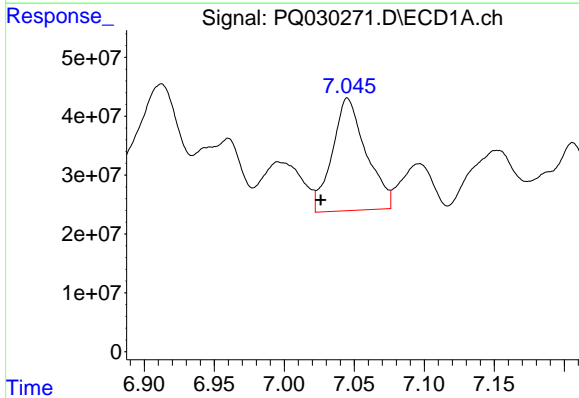
R.T.: 6.638 min
 Delta R.T.: -0.024 min
 Response: 593106137
 Conc: 229.18 ng/ml

Instrument :
 ECD_R
 ClientSampleId :



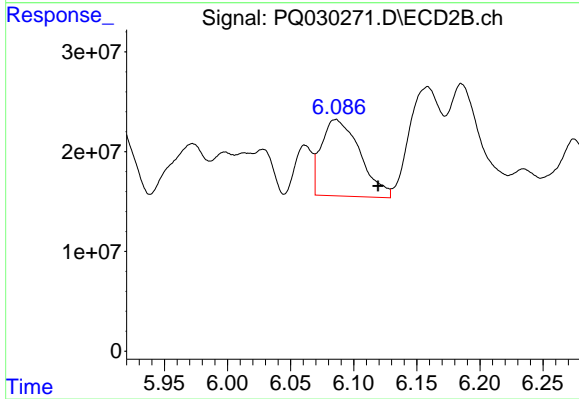
#27 AR-1254-2

R.T.: 5.760 min
 Delta R.T.: 0.042 min
 Response: 352466471
 Conc: 469.78 ng/ml



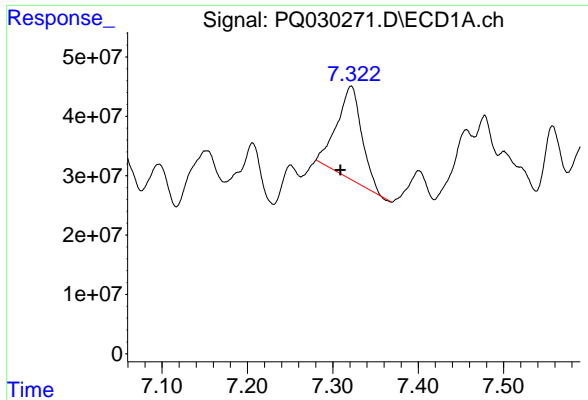
#28 AR-1254-3

R.T.: 7.045 min
 Delta R.T.: 0.019 min
 Response: 321774337
 Conc: 114.54 ng/ml



#28 AR-1254-3

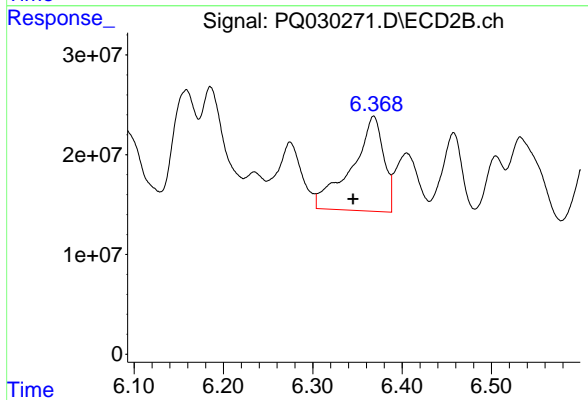
R.T.: 6.086 min
 Delta R.T.: -0.034 min
 Response: 163239830
 Conc: 128.41 ng/ml



#29 AR-1254-4

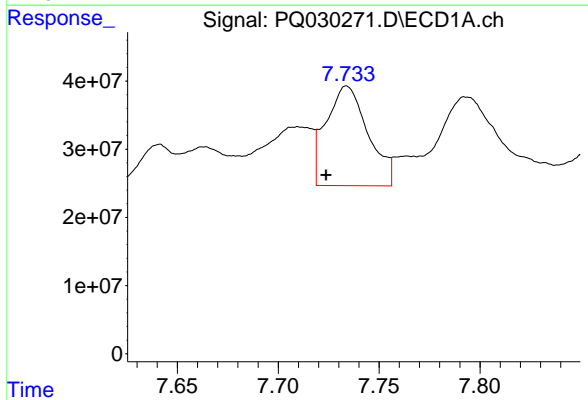
R.T.: 7.321 min
 Delta R.T.: 0.013 min
 Response: 317653834
 Conc: 159.51 ng/ml

Instrument :
 ECD_R
 ClientSampleId :



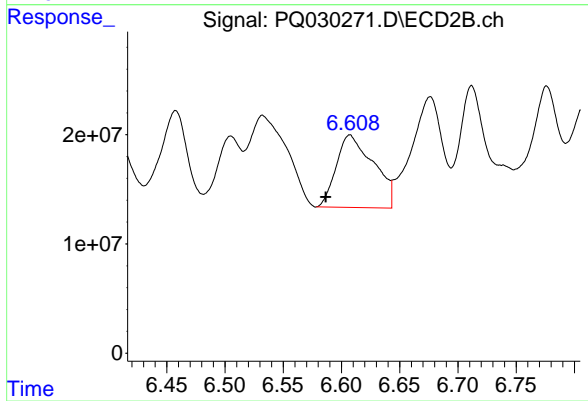
#29 AR-1254-4

R.T.: 6.368 min
 Delta R.T.: 0.023 min
 Response: 236846476
 Conc: 270.13 ng/ml



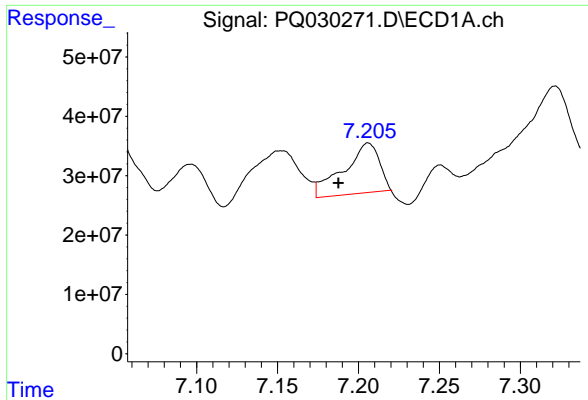
#30 AR-1254-5

R.T.: 7.734 min
 Delta R.T.: 0.010 min
 Response: 211983486
 Conc: 85.53 ng/ml



#30 AR-1254-5

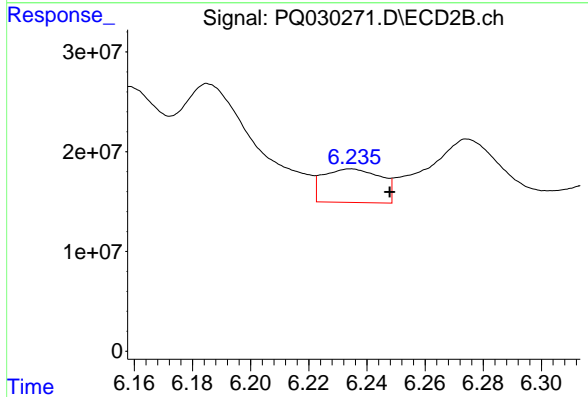
R.T.: 6.607 min
 Delta R.T.: 0.021 min
 Response: 147597408
 Conc: 278.96 ng/ml



#31 AR-1260-1

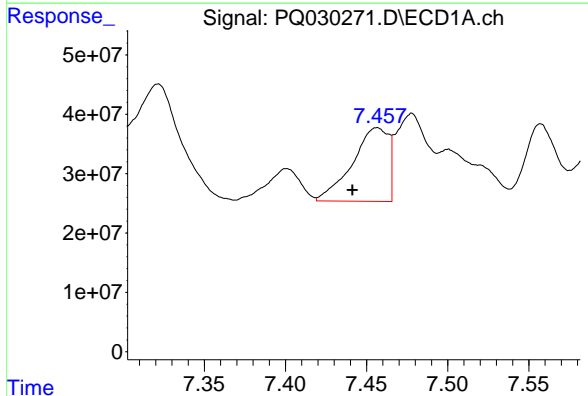
R.T.: 7.206 min
 Delta R.T.: 0.018 min
 Response: 127394351
 Conc: 63.51 ng/ml

Instrument :
 ECD_R
 ClientSampleId :



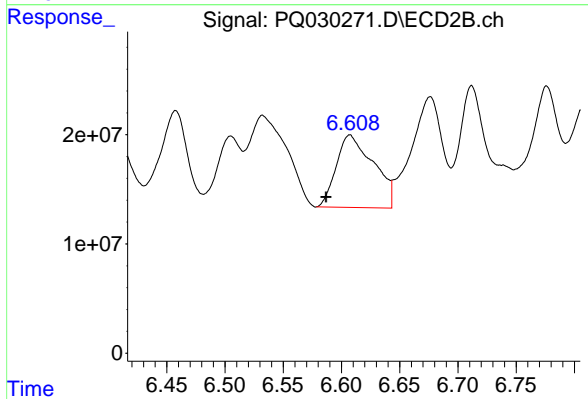
#31 AR-1260-1

R.T.: 6.234 min
 Delta R.T.: -0.013 min
 Response: 46197368
 Conc: 46.44 ng/ml



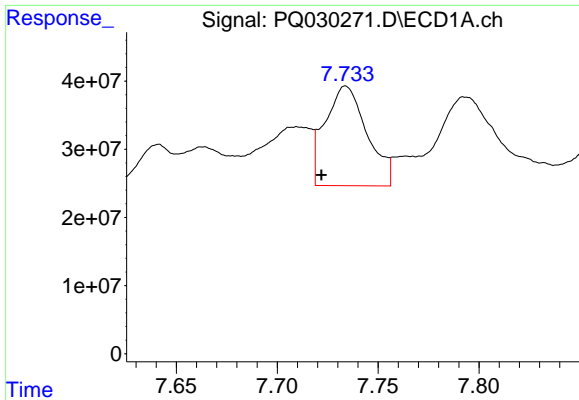
#32 AR-1260-2

R.T.: 7.456 min
 Delta R.T.: 0.015 min
 Response: 192314718
 Conc: 81.04 ng/ml



#32 AR-1260-2

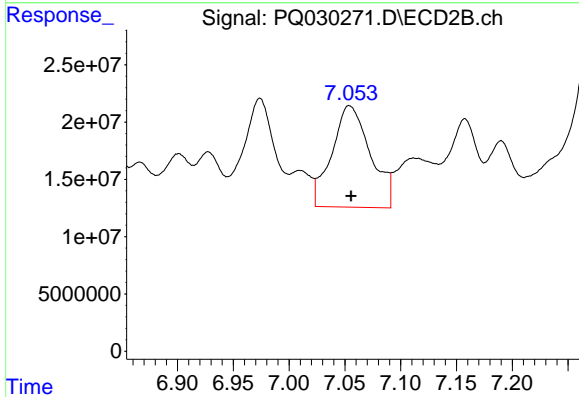
R.T.: 6.607 min
 Delta R.T.: 0.020 min
 Response: 147597408
 Conc: 128.66 ng/ml



#33 AR-1260-3

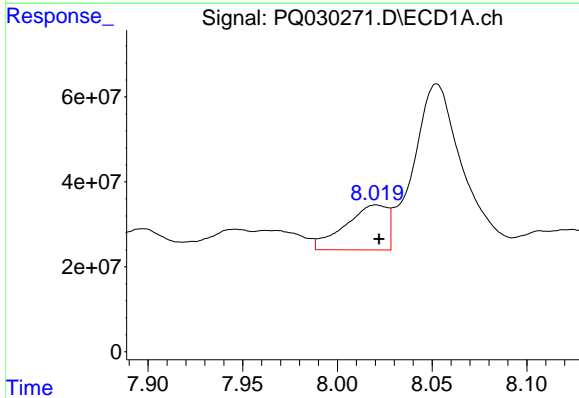
R.T.: 7.734 min
 Delta R.T.: 0.012 min
 Response: 211983486
 Conc: 75.17 ng/ml

Instrument :
 ECD_R
 ClientSampleId :



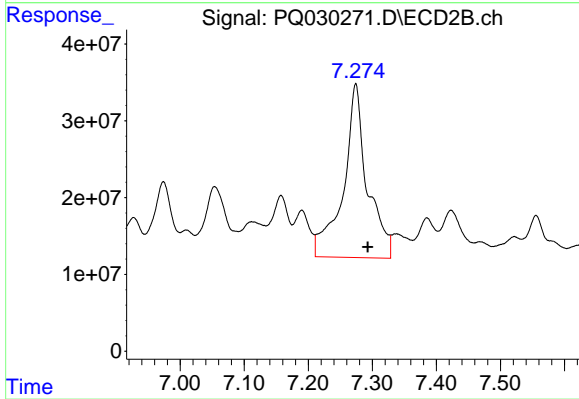
#33 AR-1260-3

R.T.: 7.054 min
 Delta R.T.: -0.002 min
 Response: 213550455
 Conc: 229.01 ng/ml



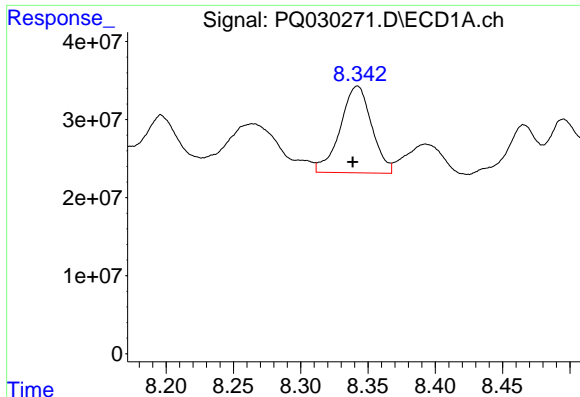
#34 AR-1260-4

R.T.: 8.020 min
 Delta R.T.: -0.002 min
 Response: 165581093
 Conc: 82.75 ng/ml



#34 AR-1260-4

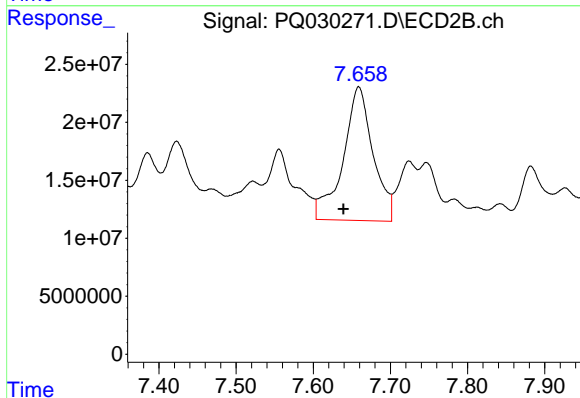
R.T.: 7.274 min
 Delta R.T.: -0.019 min
 Response: 587978829
 Conc: 241.89 ng/ml



#35 AR-1260-5

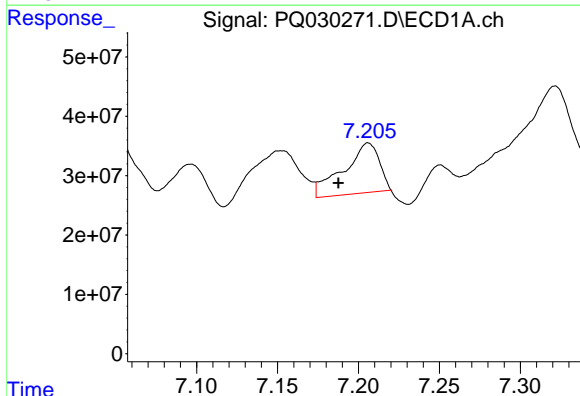
R.T.: 8.342 min
 Delta R.T.: 0.004 min
 Response: 180540658
 Conc: 45.31 ng/ml

Instrument :
 ECD_R
 ClientSampleId :



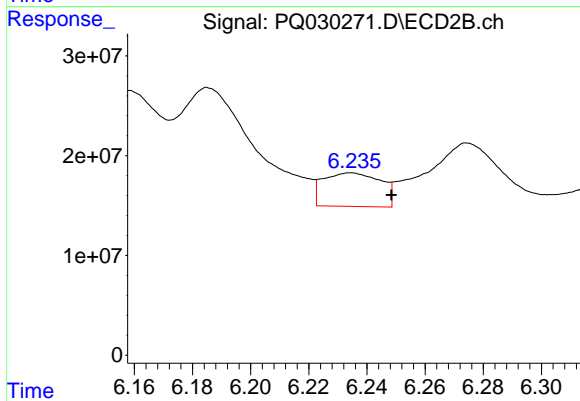
#35 AR-1260-5

R.T.: 7.659 min
 Delta R.T.: 0.020 min
 Response: 311044593
 Conc: 177.61 ng/ml



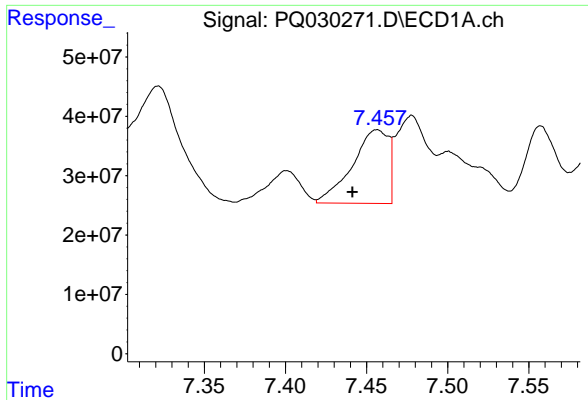
#36 AR-1262-1

R.T.: 7.206 min
 Delta R.T.: 0.018 min
 Response: 127394351
 Conc: 89.34 ng/ml



#36 AR-1262-1

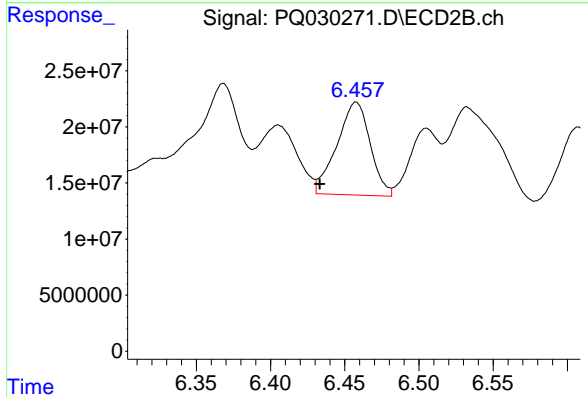
R.T.: 6.234 min
 Delta R.T.: -0.014 min
 Response: 46197368
 Conc: 60.43 ng/ml



#37 AR-1262-2

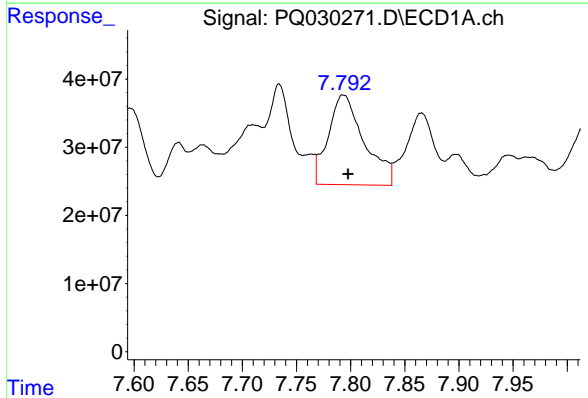
R.T.: 7.456 min
 Delta R.T.: 0.015 min
 Response: 192314718
 Conc: 104.80 ng/ml

Instrument :
 ECD_R
 ClientSampleId :



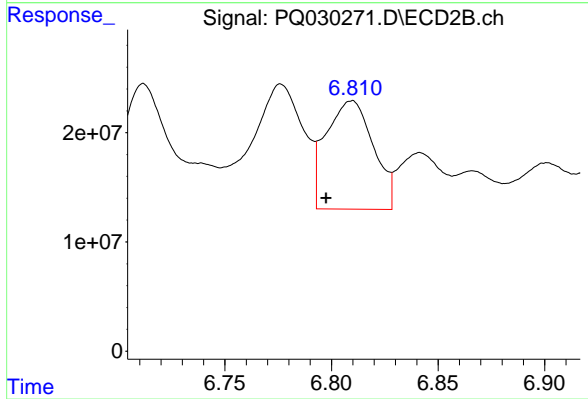
#37 AR-1262-2

R.T.: 6.458 min
 Delta R.T.: 0.024 min
 Response: 129340968
 Conc: 127.69 ng/ml



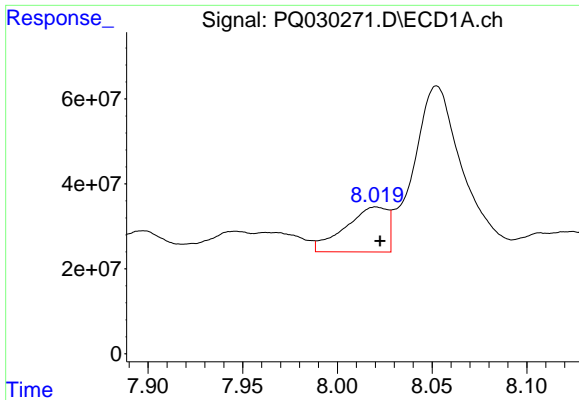
#38 AR-1262-3

R.T.: 7.793 min
 Delta R.T.: -0.004 min
 Response: 304750378
 Conc: 132.68 ng/ml



#38 AR-1262-3

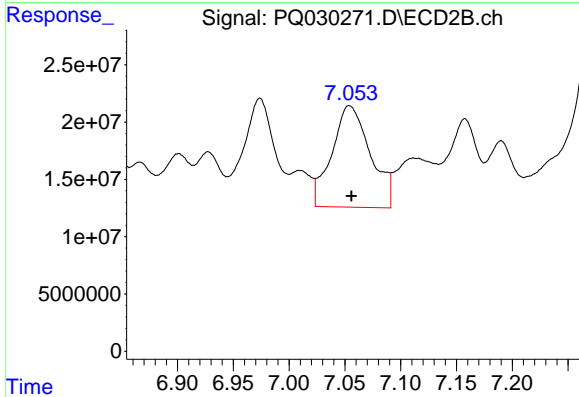
R.T.: 6.810 min
 Delta R.T.: 0.012 min
 Response: 153542791
 Conc: 121.92 ng/ml



#39 AR-1262-4

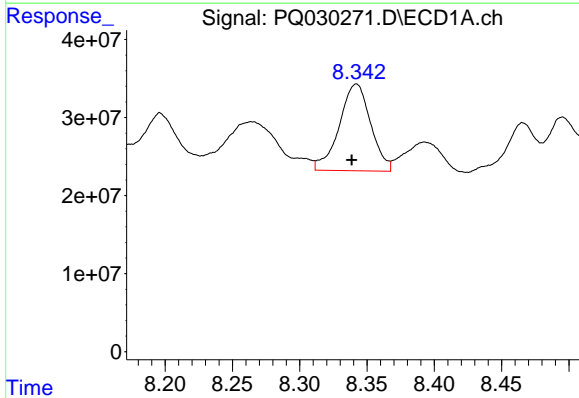
R.T.: 8.020 min
 Delta R.T.: -0.002 min
 Response: 165581093
 Conc: 75.14 ng/ml

Instrument :
 ECD_R
 ClientSampleId :



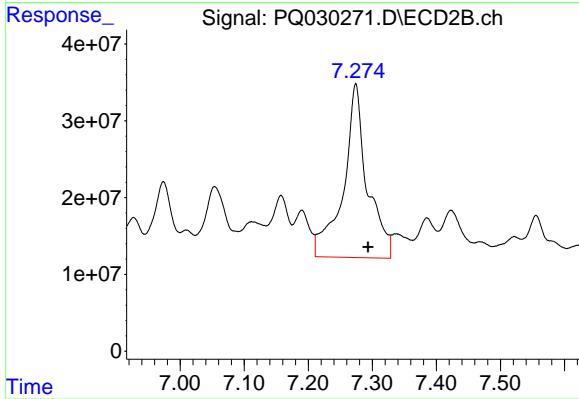
#39 AR-1262-4

R.T.: 7.054 min
 Delta R.T.: -0.002 min
 Response: 213550455
 Conc: 197.66 ng/ml



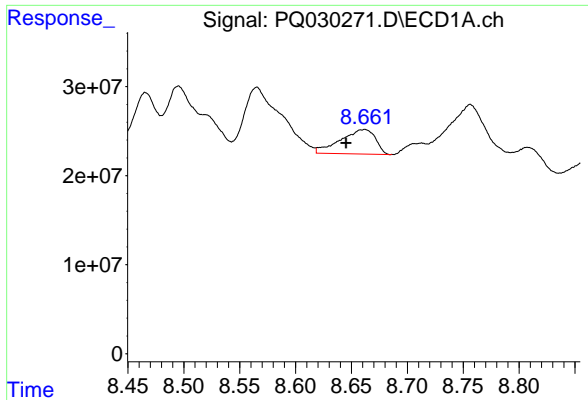
#40 AR-1262-5

R.T.: 8.342 min
 Delta R.T.: 0.004 min
 Response: 180540658
 Conc: 36.09 ng/ml



#40 AR-1262-5

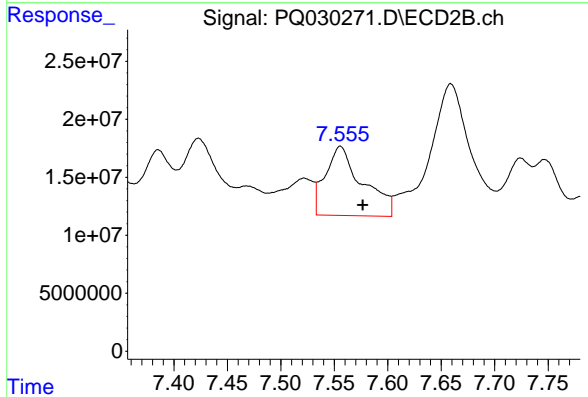
R.T.: 7.274 min
 Delta R.T.: -0.020 min
 Response: 587978829
 Conc: 242.72 ng/ml



#41 AR-1268-1

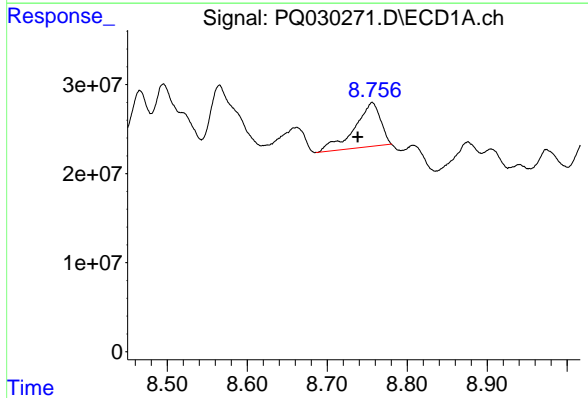
R.T.: 8.662 min
 Delta R.T.: 0.017 min
 Response: 60177014
 Conc: 14.20 ng/ml

Instrument :
 ECD_R
 ClientSampleId :



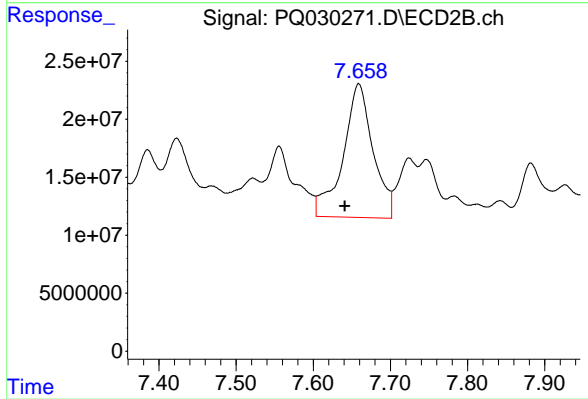
#41 AR-1268-1

R.T.: 7.556 min
 Delta R.T.: -0.021 min
 Response: 143932029
 Conc: 60.24 ng/ml



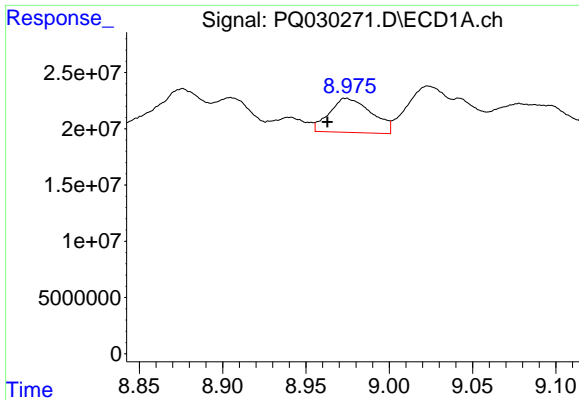
#42 AR-1268-2

R.T.: 8.756 min
 Delta R.T.: 0.018 min
 Response: 106536176
 Conc: 27.56 ng/ml



#42 AR-1268-2

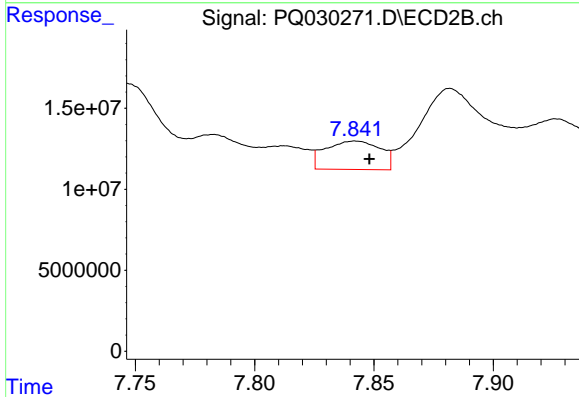
R.T.: 7.659 min
 Delta R.T.: 0.018 min
 Response: 311044593
 Conc: 128.87 ng/ml



#43 AR-1268-3

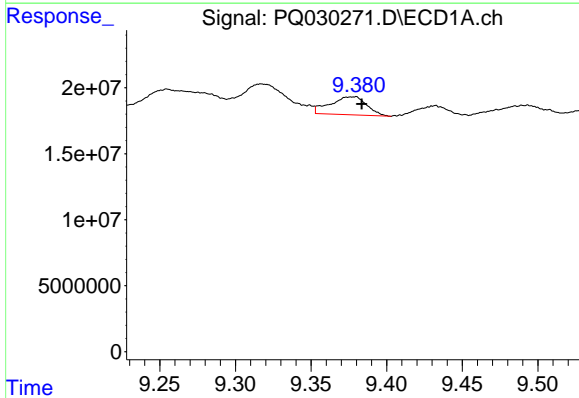
R.T.: 8.974 min
 Delta R.T.: 0.011 min
 Response: 53624761
 Conc: 16.48 ng/ml

Instrument :
 ECD_R
 ClientSampleId :



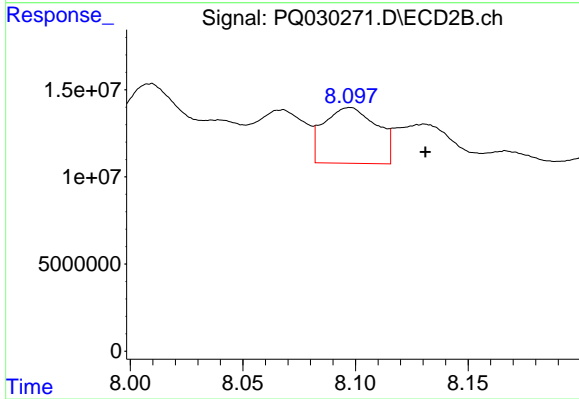
#43 AR-1268-3

R.T.: 7.842 min
 Delta R.T.: -0.006 min
 Response: 28051755
 Conc: 14.34 ng/ml



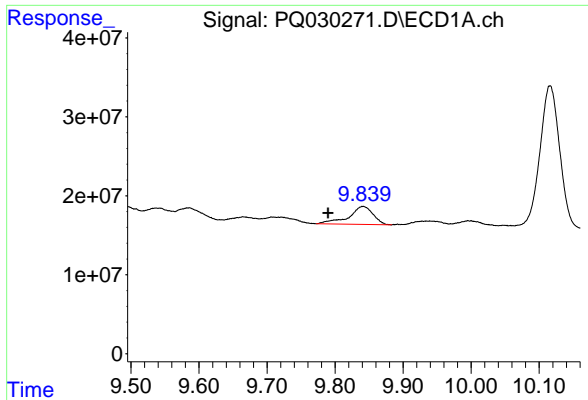
#44 AR-1268-4

R.T.: 9.378 min
 Delta R.T.: -0.005 min
 Response: 22939205
 Conc: 14.84 ng/ml



#44 AR-1268-4

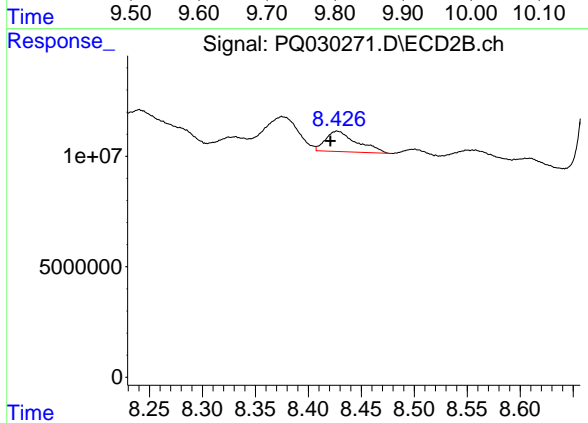
R.T.: 8.097 min
 Delta R.T.: -0.034 min
 Response: 52237868
 Conc: 62.32 ng/ml



#45 AR-1268-5

R.T.: 9.841 min
 Delta R.T.: 0.052 min
 Response: 56334501
 Conc: 5.36 ng/ml

Instrument :
 ECD_R
 ClientSampleId :



#45 AR-1268-5

R.T.: 8.427 min
 Delta R.T.: 0.007 min
 Response: 18993999
 Conc: 2.99 ng/ml