

Data Path : Z:\pestpcbsrv\HPCHEM1\ECD_Q\Data\PQ070218\
 Data File : PQ030275.D
 Signal(s) : Signal #1: ECD1A.ch Signal #2: ECD2B.ch
 Acq On : 30 Jun 2018 17:26
 Operator : UA/SM
 Sample : J3748-13DL 2X
 Misc :
 ALS Vial : 13 Sample Multiplier: 1

Instrument :
 ECD_R
 ClientSampled :

Integration File signal 1: autoint1.e
 Integration File signal 2: autoint2.e
 Quant Time: Jul 02 05:33:58 2018
 Quant Method : \\TERASTORAGE\Terastorage\pestpcbsrv\HPCHEM1\ECD_Q\Method\PQ062918.M
 Quant Title : GC EXTRACTABLES
 QLast Update : Fri Jun 29 01:53:51 2018
 Response via : Initial Calibration
 Integrator: ChemStation

Volume Inj. : 2 µl
 Signal #1 Phase : ZB-MR1 Signal #2 Phase: ZB-MR2
 Signal #1 Info : 30Mx0.32mmx 0.50µ Signal #2 Info : 30M x 0.32mm x 0.25µm

Compound	RT#1	RT#2	Resp#1	Resp#2	ng/ml	ng/ml
System Monitoring Compounds						
1) SA Tetrachlo...	4.448	3.724	176.3E6	79488473	4.200	5.776 #
2) SA Decachlor...	10.112	8.672	198.6E6	100.8E6	5.622	4.938
Target Compounds						
3) L1 AR-1016-1	4.819	4.582	3407566	7699550	4.878	20.341 #
4) L1 AR-1016-2	5.346	4.991	14444267	148.7E6	15.351	384.624 #
5) L1 AR-1016-3	5.675	4.991	6671701	148.7E6	5.078	488.412 #
6) L1 AR-1016-4	5.792	5.041	169.1E6	247.9E6	153.355	606.685 #
7) L1 AR-1016-5	6.218	5.242	272.5E6	3974194	247.759	9.553 #
8) L2 AR-1221-1	4.663	0.000	74819882	0	133.308	N.D. #
9) L2 AR-1221-2	4.753	4.003	31197992	13344883	83.540	109.148 #
10) L2 AR-1221-3	4.819	4.054	3407566	21702555	3.044	56.104 #
11) L3 AR-1232-1	4.819	4.054	3407566	21702555	4.627	88.833 #
12) L3 AR-1232-2	5.346	4.872	14444267	13796920	38.347	64.074 #
13) L3 AR-1232-3	5.675	4.991	6671701	148.7E6	11.674	1058.139 #
14) L3 AR-1232-4	5.792	5.242	169.1E6	3974194	372.325	31.940 #
15) L3 AR-1232-5	6.081	5.590	110.2E6	242.9E6	284.951	1262.556 #
16) L4 AR-1242-1	5.346	4.582	14444267	7699550	18.936	26.959 #
17) L4 AR-1242-2	5.613	4.814	28987404	413.9E6	25.018	682.368 #
18) L4 AR-1242-3	5.675	4.991	6671701	148.7E6	6.447	497.522 #
19) L4 AR-1242-4	6.081	5.041	110.2E6	247.9E6	129.100	798.779 #
20) L4 AR-1242-5	6.218	5.242	272.5E6	3974194	292.770	12.273 #
21) L5 AR-1248-1	6.081	4.991	110.2E6	148.7E6	73.131	370.010 #
22) L5 AR-1248-2	6.218	5.041	272.5E6	247.9E6	216.262	558.732 #
23) L5 AR-1248-3	6.458	5.242	527.5E6	3974194	260.336	7.999 #
24) L5 AR-1248-4	6.537	5.590	67712646	242.9E6	41.960	290.563 #
25) L5 AR-1248-5	6.670	5.590	507.8E6	242.9E6	300.926	290.563
26) L6 AR-1254-1	6.458	5.590	527.5E6	242.9E6	241.746	271.506
27) L6 AR-1254-2	6.670	5.733	507.8E6	263.8E6	196.226	351.539 #
28) L6 AR-1254-3	7.031	6.142	289.6E6	435.2E6	103.082	342.334 #
29) L6 AR-1254-4	7.309	6.351	139.7E6	62397693	70.158	71.166
30) L6 AR-1254-5	7.723	6.592	1450.8E6	622.9E6	585.329	1177.355 #
31) L7 AR-1260-1	7.191	6.256	895.6E6	525.2E6	446.534	527.972
32) L7 AR-1260-2	7.444	6.592	1258.6E6	622.9E6	530.354	543.000
33) L7 AR-1260-3	7.723	7.057	1450.8E6	499.7E6	514.466	535.858
34) L7 AR-1260-4	8.021	7.294	1412.7E6	1307.2E6	705.970	537.783
35) L7 AR-1260-5	8.336	7.639	2125.7E6	1037.0E6	533.463	592.111
36) L8 AR-1262-1	7.191	6.256	895.6E6	525.2E6	628.083	687.084
37) L8 AR-1262-2	7.444	6.439	1258.6E6	698.8E6	685.882	689.928
38) L8 AR-1262-3	7.797	6.800	811.6E6	511.3E6	353.339	406.012
39) L8 AR-1262-4	8.021	7.057	1412.7E6	499.7E6	641.079	462.500 #
40) L8 AR-1262-5	8.336	7.294	2125.7E6	1307.2E6	424.930	539.640 #
41) L9 AR-1268-1	8.660	7.576	1264.5E6	217.2E6	298.485	90.893 #

Data Path : Z:\pestpcbsrv\HPCHEM1\ECD_Q\Data\PQ070218\
 Data File : PQ030275.D
 Signal(s) : Signal #1: ECD1A.ch Signal #2: ECD2B.ch
 Acq On : 30 Jun 2018 17:26
 Operator : UA/SM
 Sample : J3748-13DL 2X
 Misc :
 ALS Vial : 13 Sample Multiplier: 1

Instrument :
 ECD_R
 ClientSampleId :

Integration File signal 1: autoint1.e
 Integration File signal 2: autoint2.e
 Quant Time: Jul 02 05:33:58 2018
 Quant Method : \\TERASTORAGE\Terastorage\pestpcbsrv\HPCHEM1\ECD_Q\Method\PQ062918.M
 Quant Title : GC EXTRACTABLES
 QLast Update : Fri Jun 29 01:53:51 2018
 Response via : Initial Calibration
 Integrator: ChemStation

Volume Inj. : 2 µl
 Signal #1 Phase : ZB-MR1 Signal #2 Phase: ZB-MR2
 Signal #1 Info : 30Mx0.32mmx 0.50µ Signal #2 Info : 30M x 0.32mm x 0.25µm

	Compound	RT#1	RT#2	Resp#1	Resp#2	ng/ml	ng/ml
42)	L9 AR-1268-2	8.713	7.639	709.0E6	1037.0E6	183.448	429.626 #
43)	L9 AR-1268-3	8.904	7.844	18559030	18077442	5.702	9.244 #
44)	L9 AR-1268-4	9.377	8.129	518.0E6	357.6E6	335.091	426.638 #
45)	L9 AR-1268-5	9.783	8.427	97736775	232.5E6	9.305	36.581 #

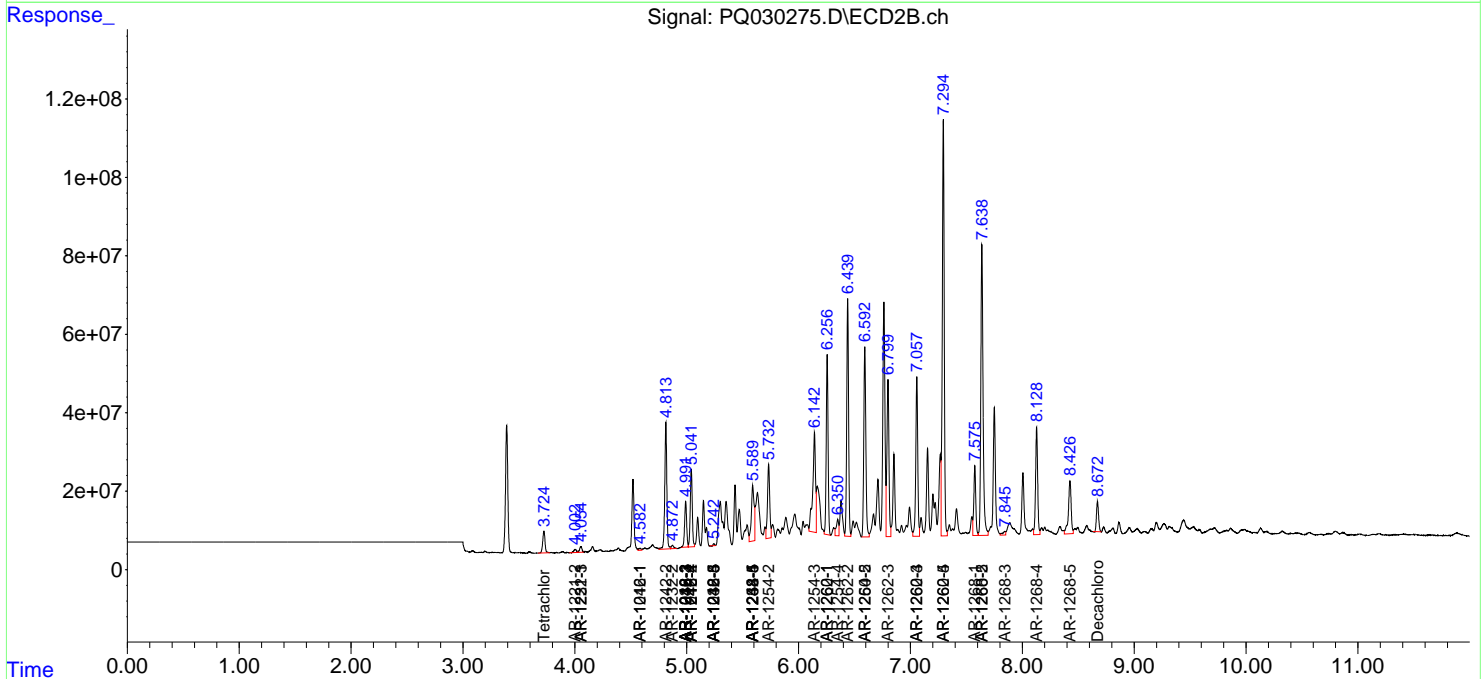
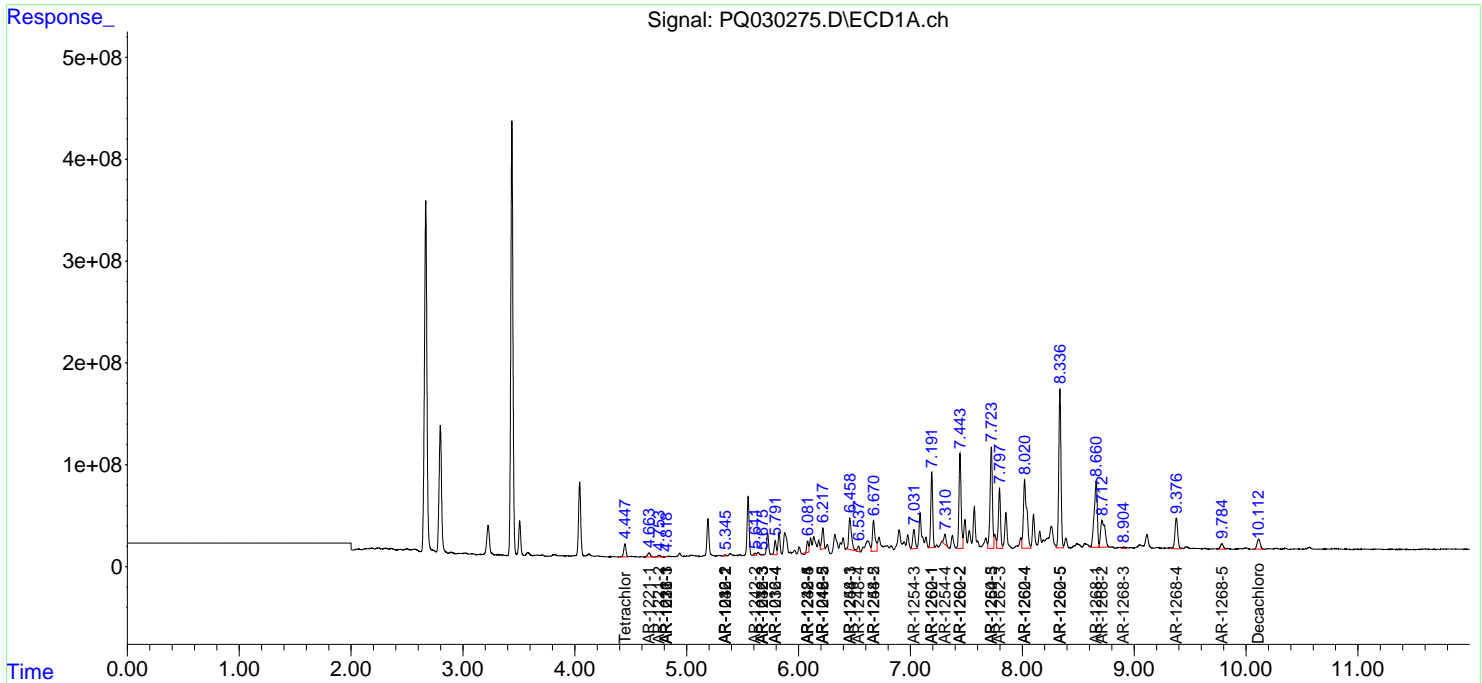
(f)=RT Delta > 1/2 Window (#)=Amounts differ by > 25% (m)=manual int.

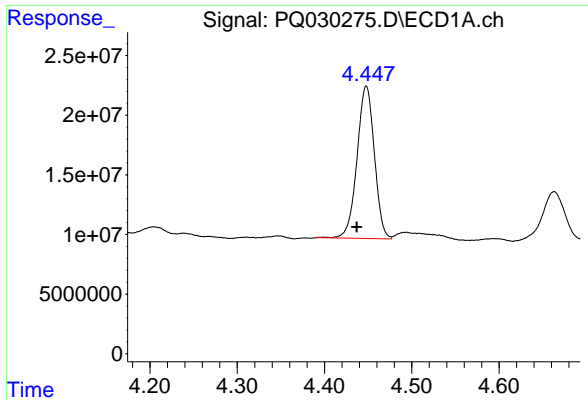
Data Path : Z:\pestpcbsrv\HPCHEM1\ECD_Q\Data\PQ070218\
 Data File : PQ030275.D
 Signal(s) : Signal #1: ECD1A.ch Signal #2: ECD2B.ch
 Acq On : 30 Jun 2018 17:26
 Operator : UA/SM
 Sample : J3748-13DL 2X
 Misc :
 ALS Vial : 13 Sample Multiplier: 1

Instrument :
 ECD_R
 ClientSampled :

Integration File signal 1: autoint1.e
 Integration File signal 2: autoint2.e
 Quant Time: Jul 02 05:33:58 2018
 Quant Method : \\TERASTORAGE\Terastorage\pestpcbsrv\HPCHEM1\ECD_Q\Method\PQ062918.M
 Quant Title : GC EXTRACTABLES
 QLast Update : Fri Jun 29 01:53:51 2018
 Response via : Initial Calibration
 Integrator: ChemStation

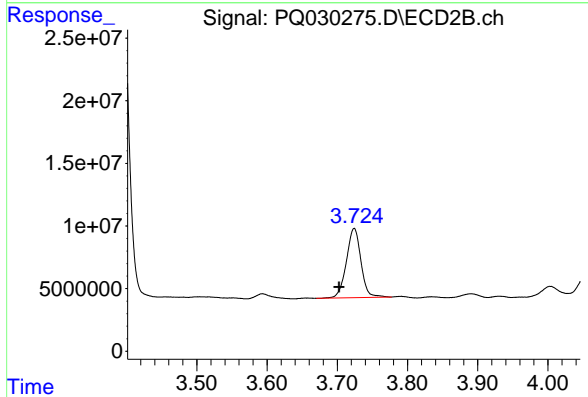
Volume Inj. : 2 µl
 Signal #1 Phase : ZB-MR1 Signal #2 Phase: ZB-MR2
 Signal #1 Info : 30Mx0.32mmx 0.50µ Signal #2 Info : 30M x 0.32mm x 0.25µm



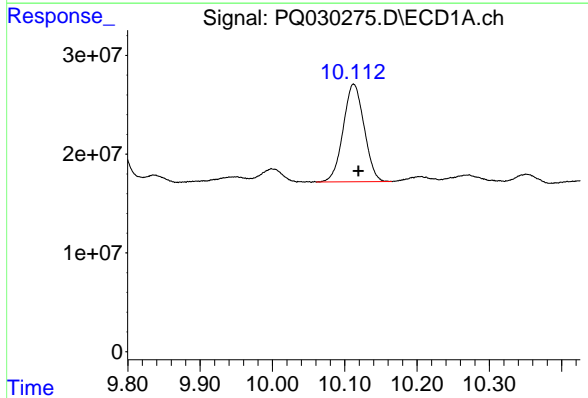


#1 Tetrachloro-m-xylene
 R.T.: 4.448 min
 Delta R.T.: 0.011 min
 Response: 176291451
 Conc: 4.20 ng/ml

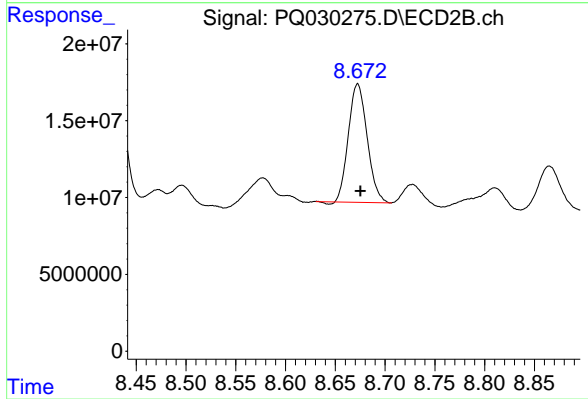
Instrument :
 ECD_R
 ClientSampled :



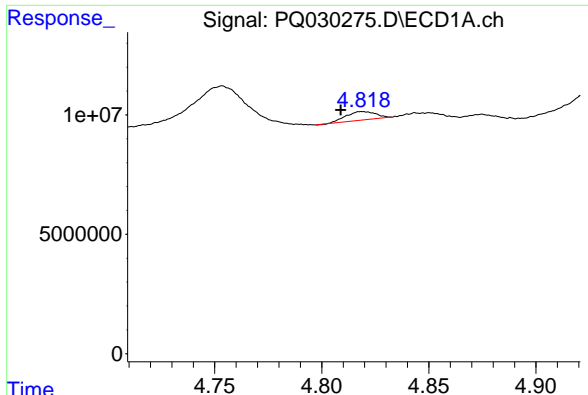
#1 Tetrachloro-m-xylene
 R.T.: 3.724 min
 Delta R.T.: 0.022 min
 Response: 79488473
 Conc: 5.78 ng/ml



#2 Decachlorobiphenyl
 R.T.: 10.112 min
 Delta R.T.: -0.007 min
 Response: 198623845
 Conc: 5.62 ng/ml



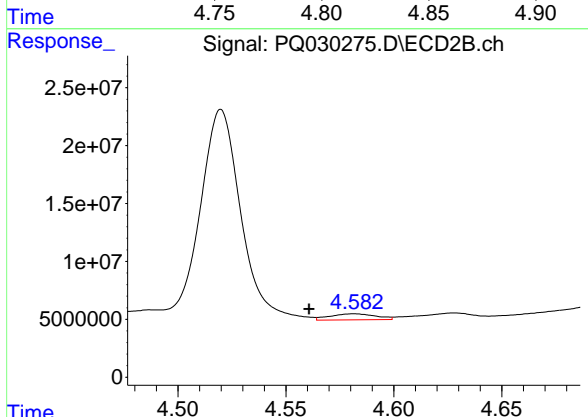
#2 Decachlorobiphenyl
 R.T.: 8.672 min
 Delta R.T.: -0.003 min
 Response: 100822646
 Conc: 4.94 ng/ml



#3 AR-1016-1

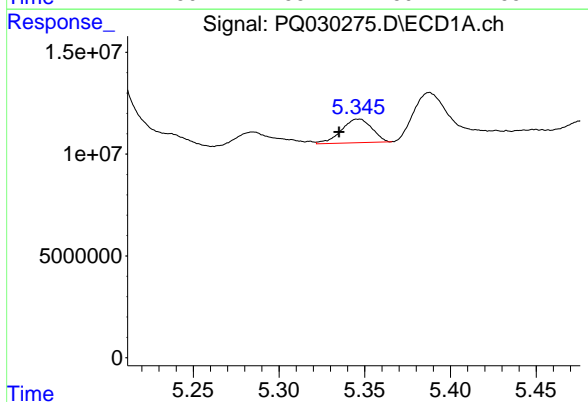
R.T.: 4.819 min
 Delta R.T.: 0.010 min
 Response: 3407566
 Conc: 4.88 ng/ml

Instrument :
 ECD_R
 ClientSampleId :



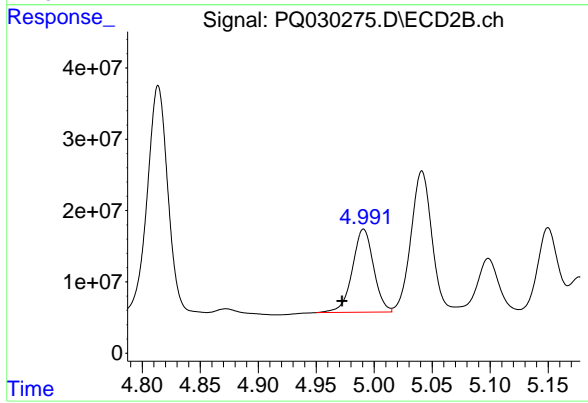
#3 AR-1016-1

R.T.: 4.582 min
 Delta R.T.: 0.021 min
 Response: 7699550
 Conc: 20.34 ng/ml



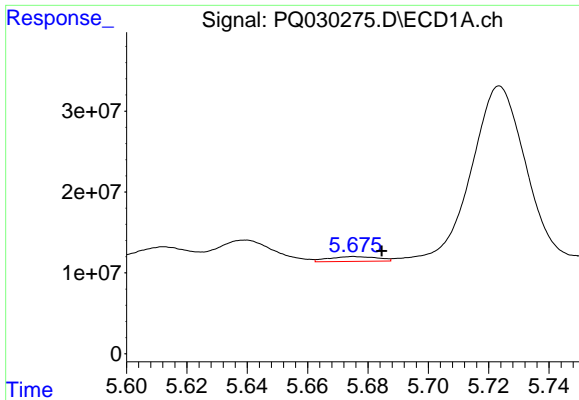
#4 AR-1016-2

R.T.: 5.346 min
 Delta R.T.: 0.011 min
 Response: 14444267
 Conc: 15.35 ng/ml



#4 AR-1016-2

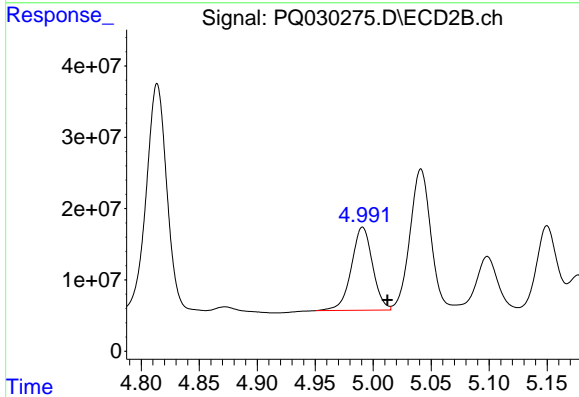
R.T.: 4.991 min
 Delta R.T.: 0.019 min
 Response: 148702646
 Conc: 384.62 ng/ml



#5 AR-1016-3

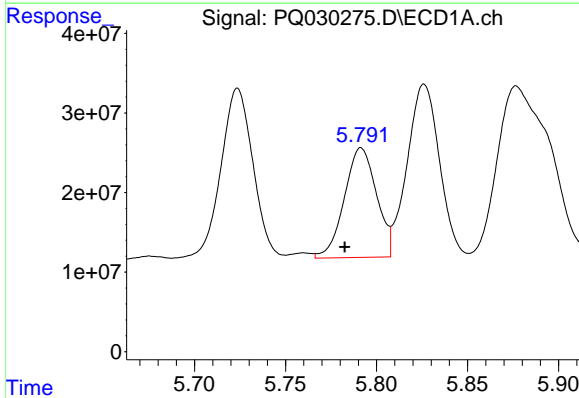
R.T.: 5.675 min
 Delta R.T.: -0.009 min
 Response: 6671701
 Conc: 5.08 ng/ml

Instrument :
 ECD_R
 ClientSampled :



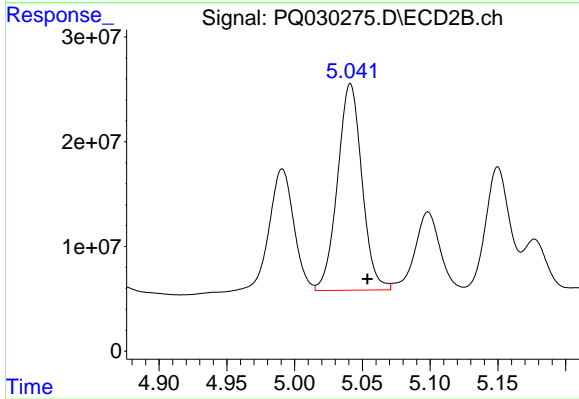
#5 AR-1016-3

R.T.: 4.991 min
 Delta R.T.: -0.021 min
 Response: 148702646
 Conc: 488.41 ng/ml



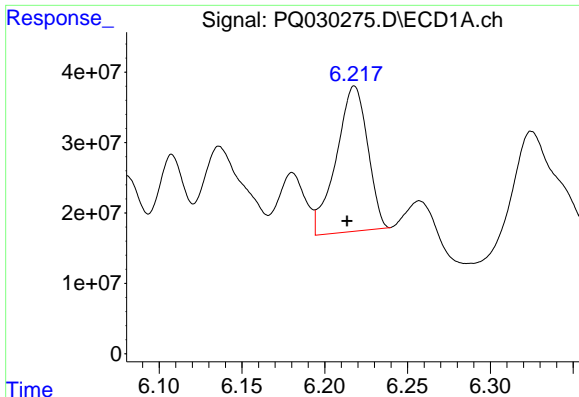
#6 AR-1016-4

R.T.: 5.792 min
 Delta R.T.: 0.009 min
 Response: 169108414
 Conc: 153.36 ng/ml



#6 AR-1016-4

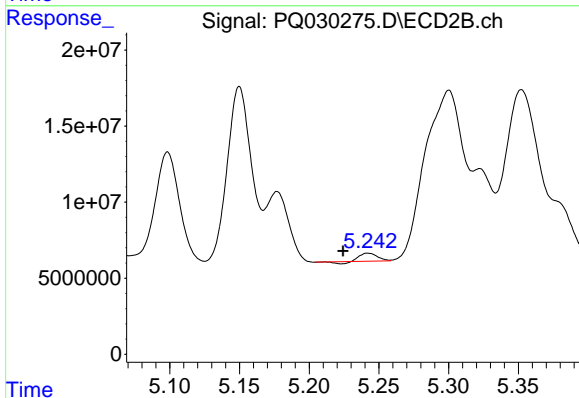
R.T.: 5.041 min
 Delta R.T.: -0.013 min
 Response: 247869527
 Conc: 606.68 ng/ml



#7 AR-1016-5

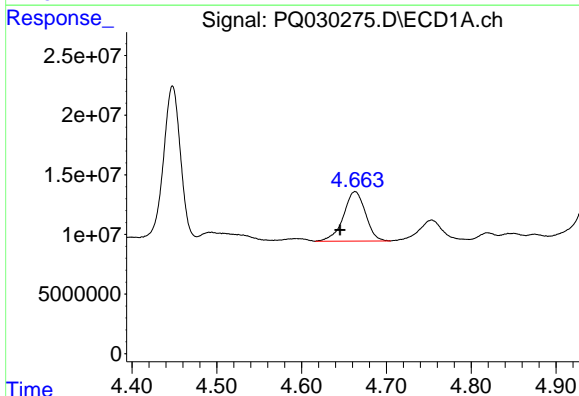
R.T.: 6.218 min
 Delta R.T.: 0.004 min
 Response: 272468913
 Conc: 247.76 ng/ml

Instrument :
 ECD_R
 ClientSampled :



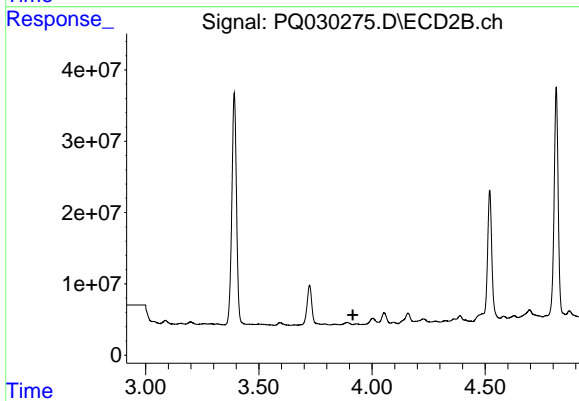
#7 AR-1016-5

R.T.: 5.242 min
 Delta R.T.: 0.018 min
 Response: 3974194
 Conc: 9.55 ng/ml



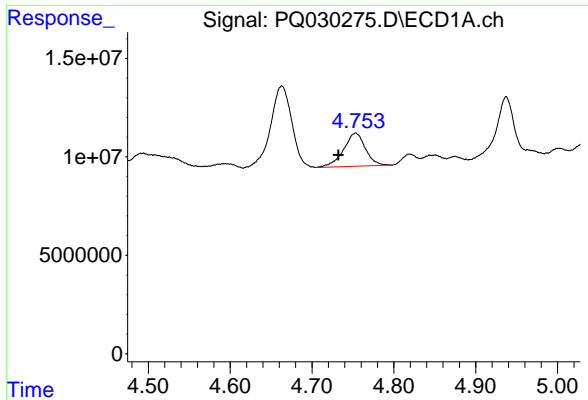
#8 AR-1221-1

R.T.: 4.663 min
 Delta R.T.: 0.018 min
 Response: 74819882
 Conc: 133.31 ng/ml



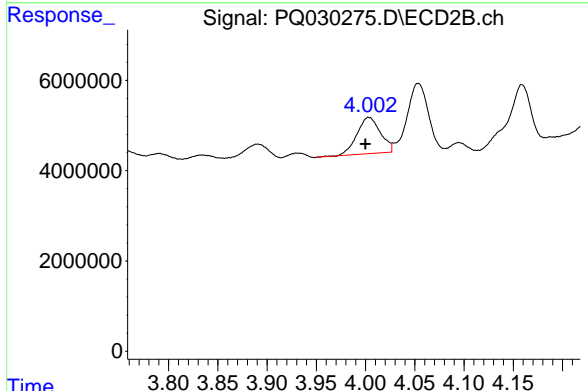
#8 AR-1221-1

R.T.: 0.000 min
 Exp R.T. : 3.916 min
 Response: 0
 Conc: N.D.

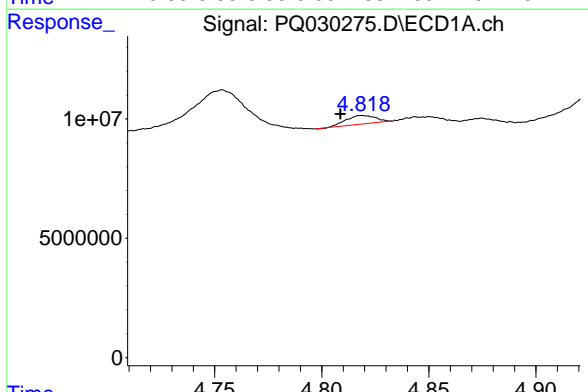


#9 AR-1221-2
 R.T.: 4.753 min
 Delta R.T.: 0.021 min
 Response: 31197992
 Conc: 83.54 ng/ml

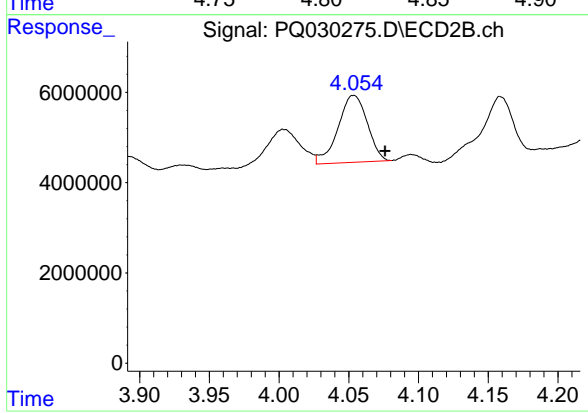
Instrument :
 ECD_R
 ClientSampleId :



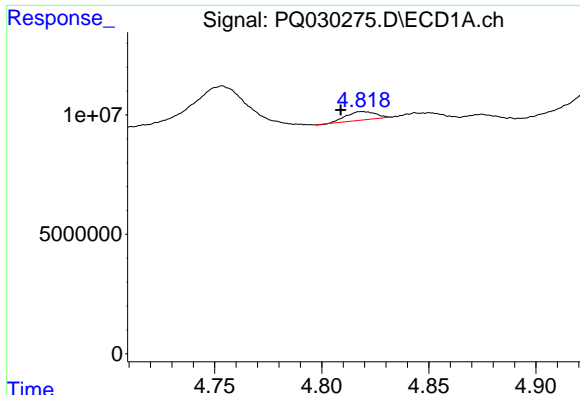
#9 AR-1221-2
 R.T.: 4.003 min
 Delta R.T.: 0.003 min
 Response: 13344883
 Conc: 109.15 ng/ml



#10 AR-1221-3
 R.T.: 4.819 min
 Delta R.T.: 0.010 min
 Response: 3407566
 Conc: 3.04 ng/ml



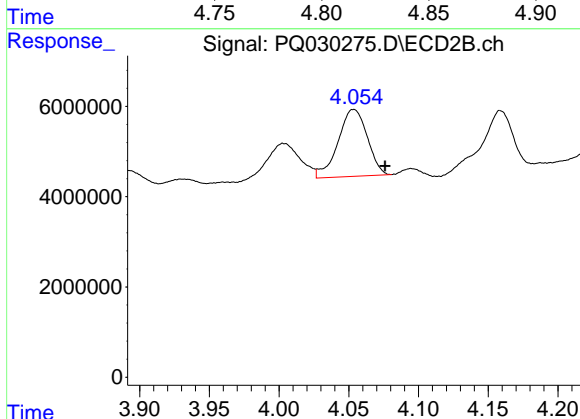
#10 AR-1221-3
 R.T.: 4.054 min
 Delta R.T.: -0.022 min
 Response: 21702555
 Conc: 56.10 ng/ml



#11 AR-1232-1

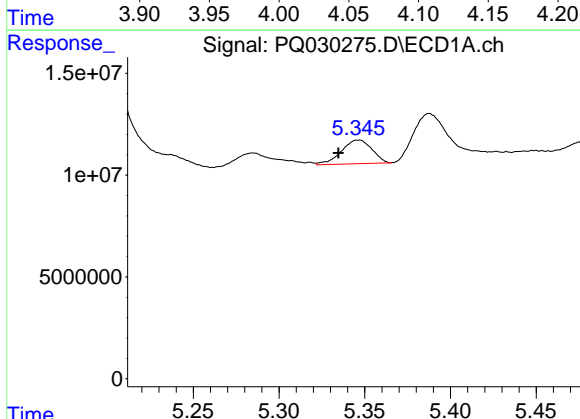
R.T.: 4.819 min
 Delta R.T.: 0.010 min
 Response: 3407566
 Conc: 4.63 ng/ml

Instrument :
 ECD_R
 ClientSampleId :



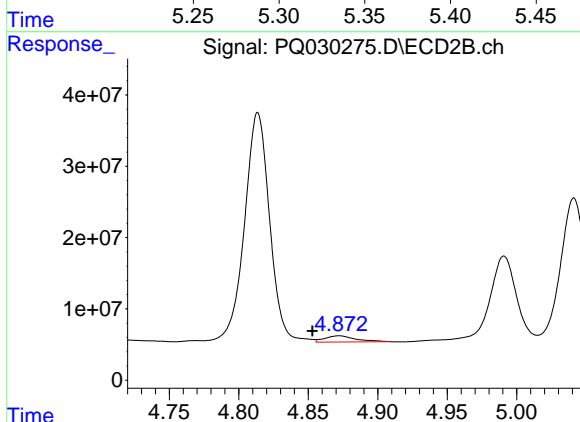
#11 AR-1232-1

R.T.: 4.054 min
 Delta R.T.: -0.022 min
 Response: 21702555
 Conc: 88.83 ng/ml



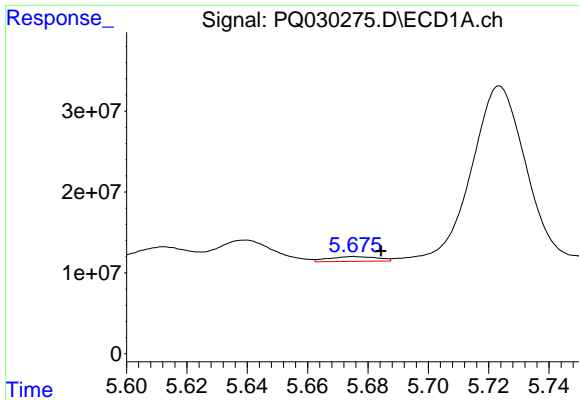
#12 AR-1232-2

R.T.: 5.346 min
 Delta R.T.: 0.012 min
 Response: 14444267
 Conc: 38.35 ng/ml



#12 AR-1232-2

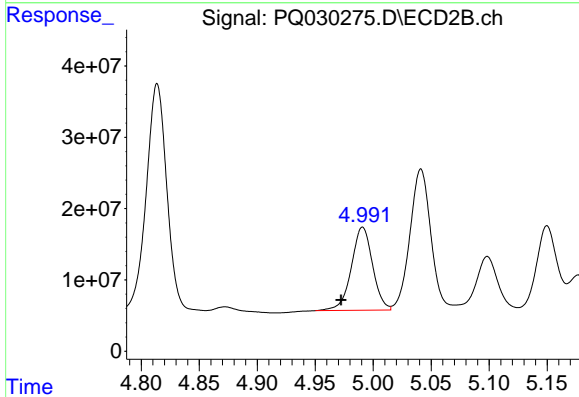
R.T.: 4.872 min
 Delta R.T.: 0.019 min
 Response: 13796920
 Conc: 64.07 ng/ml



#13 AR-1232-3

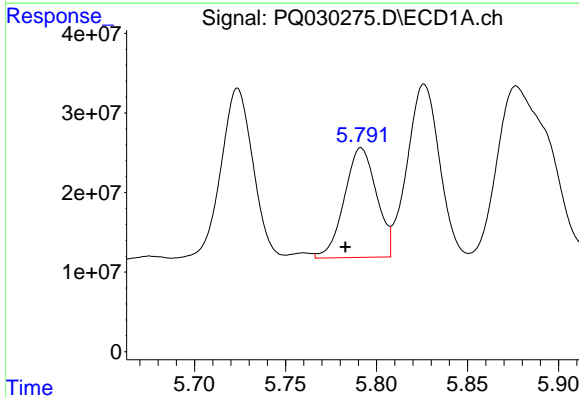
R.T.: 5.675 min
 Delta R.T.: -0.009 min
 Response: 6671701
 Conc: 11.67 ng/ml

Instrument :
 ECD_R
 ClientSampled :



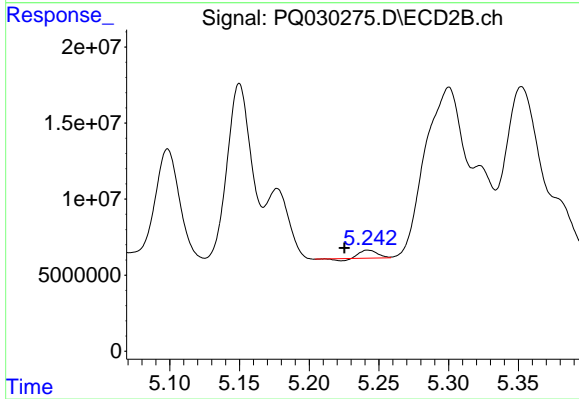
#13 AR-1232-3

R.T.: 4.991 min
 Delta R.T.: 0.019 min
 Response: 148702646
 Conc: 1058.14 ng/ml



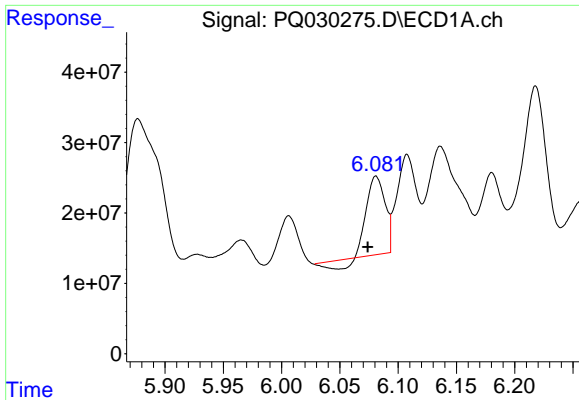
#14 AR-1232-4

R.T.: 5.792 min
 Delta R.T.: 0.009 min
 Response: 169108414
 Conc: 372.32 ng/ml



#14 AR-1232-4

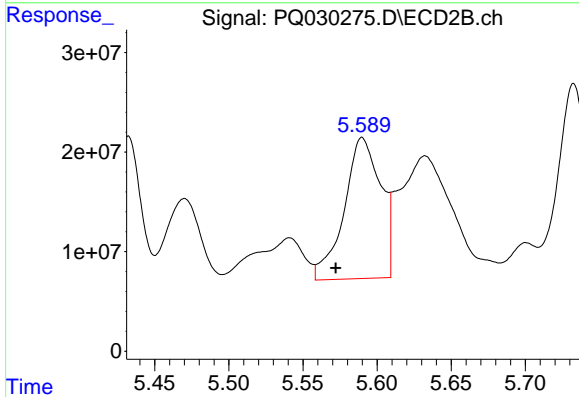
R.T.: 5.242 min
 Delta R.T.: 0.017 min
 Response: 3974194
 Conc: 31.94 ng/ml



#15 AR-1232-5

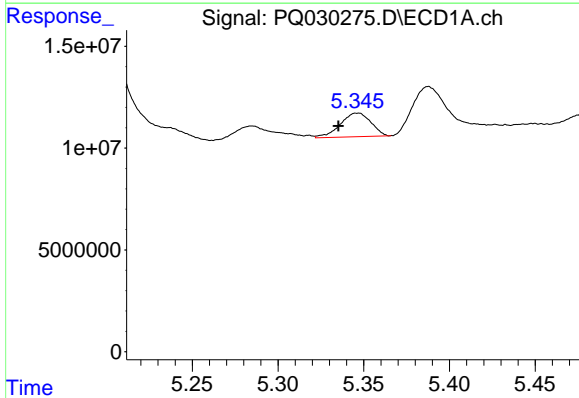
R.T.: 6.081 min
 Delta R.T.: 0.007 min
 Response: 110195235
 Conc: 284.95 ng/ml

Instrument :
 ECD_R
 ClientSampleId :



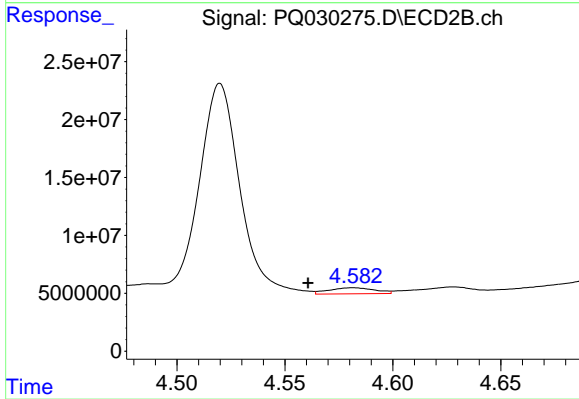
#15 AR-1232-5

R.T.: 5.590 min
 Delta R.T.: 0.018 min
 Response: 242938954
 Conc: 1262.56 ng/ml



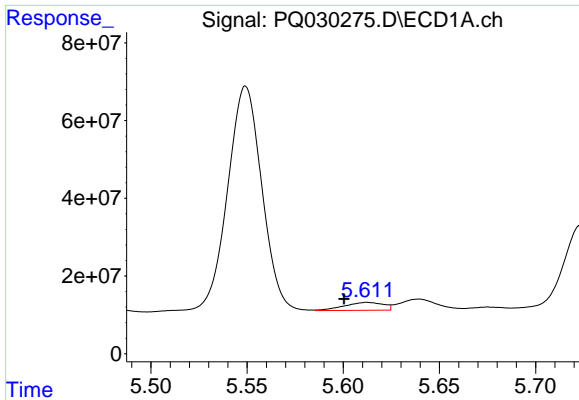
#16 AR-1242-1

R.T.: 5.346 min
 Delta R.T.: 0.011 min
 Response: 14444267
 Conc: 18.94 ng/ml



#16 AR-1242-1

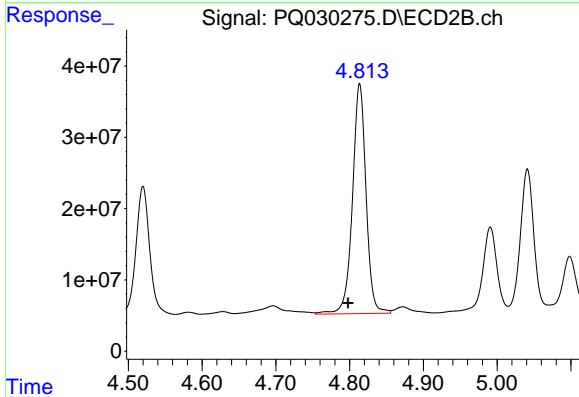
R.T.: 4.582 min
 Delta R.T.: 0.021 min
 Response: 7699550
 Conc: 26.96 ng/ml



#17 AR-1242-2

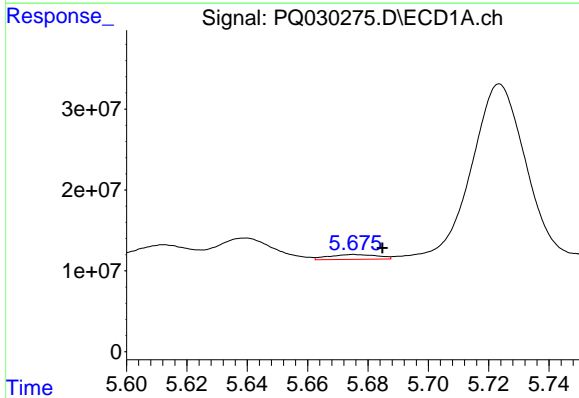
R.T.: 5.613 min
 Delta R.T.: 0.012 min
 Response: 28987404
 Conc: 25.02 ng/ml

Instrument :
 ECD_R
 ClientSampled :



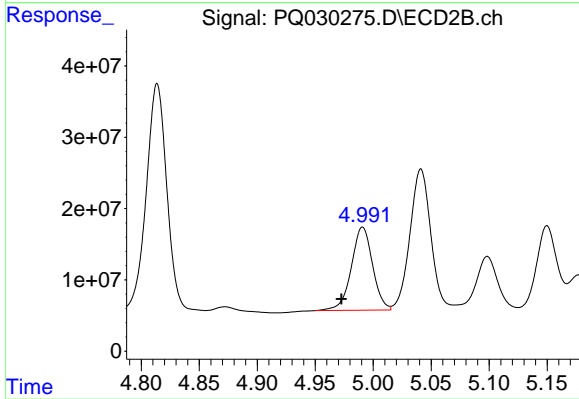
#17 AR-1242-2

R.T.: 4.814 min
 Delta R.T.: 0.016 min
 Response: 413944133
 Conc: 682.37 ng/ml



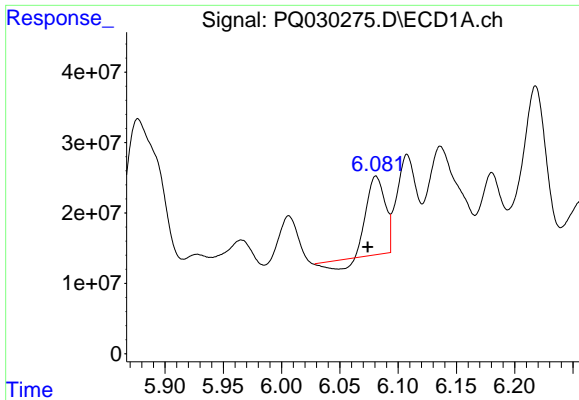
#18 AR-1242-3

R.T.: 5.675 min
 Delta R.T.: -0.009 min
 Response: 6671701
 Conc: 6.45 ng/ml



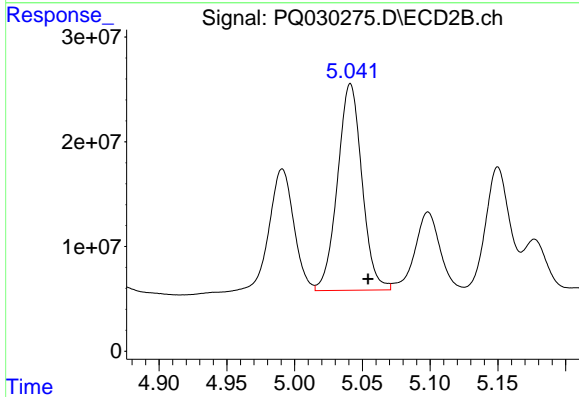
#18 AR-1242-3

R.T.: 4.991 min
 Delta R.T.: 0.018 min
 Response: 148702646
 Conc: 497.52 ng/ml

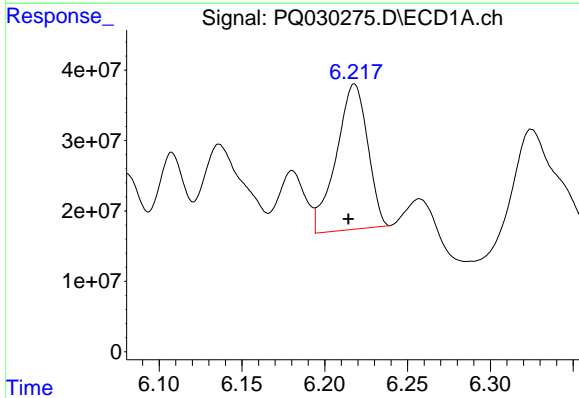


#19 AR-1242-4
 R.T.: 6.081 min
 Delta R.T.: 0.007 min
 Response: 110195235
 Conc: 129.10 ng/ml

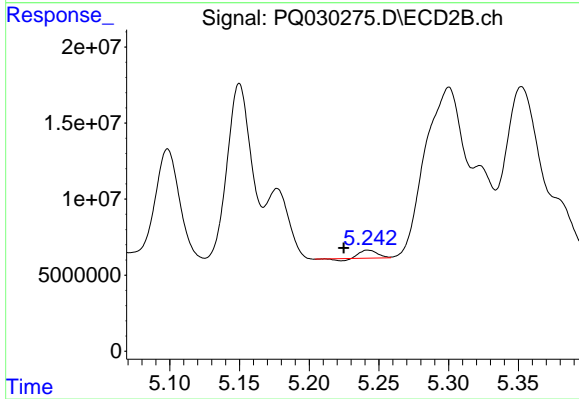
Instrument :
 ECD_R
 ClientSampled :



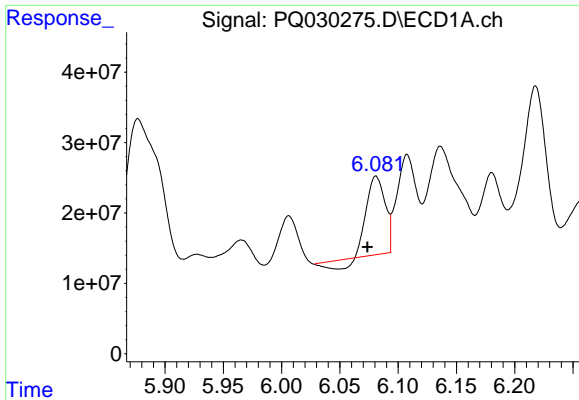
#19 AR-1242-4
 R.T.: 5.041 min
 Delta R.T.: -0.013 min
 Response: 247869527
 Conc: 798.78 ng/ml



#20 AR-1242-5
 R.T.: 6.218 min
 Delta R.T.: 0.004 min
 Response: 272468913
 Conc: 292.77 ng/ml



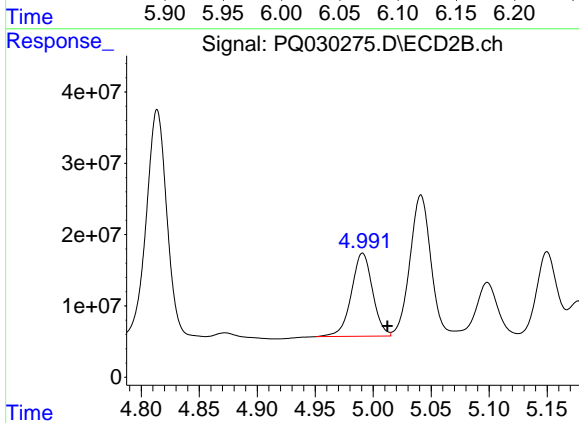
#20 AR-1242-5
 R.T.: 5.242 min
 Delta R.T.: 0.017 min
 Response: 3974194
 Conc: 12.27 ng/ml



#21 AR-1248-1

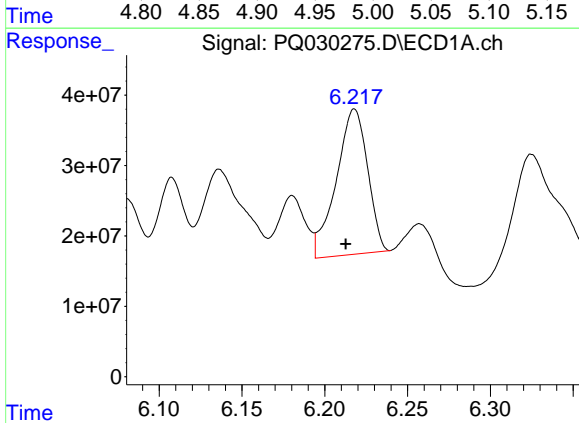
R.T.: 6.081 min
 Delta R.T.: 0.007 min
 Response: 110195235
 Conc: 73.13 ng/ml

Instrument :
 ECD_R
 ClientSampled :



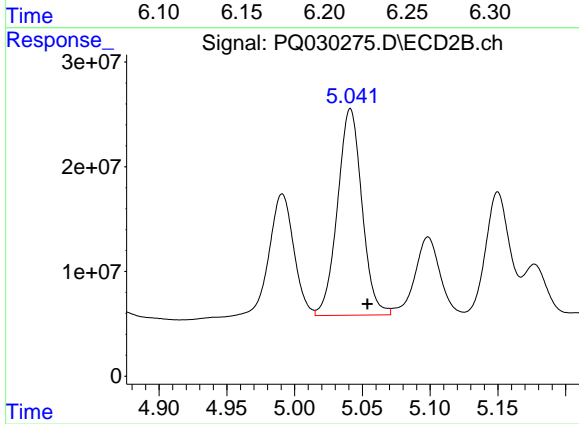
#21 AR-1248-1

R.T.: 4.991 min
 Delta R.T.: -0.021 min
 Response: 148702646
 Conc: 370.01 ng/ml



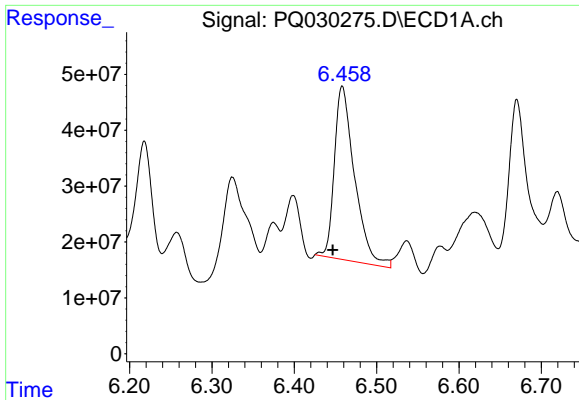
#22 AR-1248-2

R.T.: 6.218 min
 Delta R.T.: 0.005 min
 Response: 272468913
 Conc: 216.26 ng/ml



#22 AR-1248-2

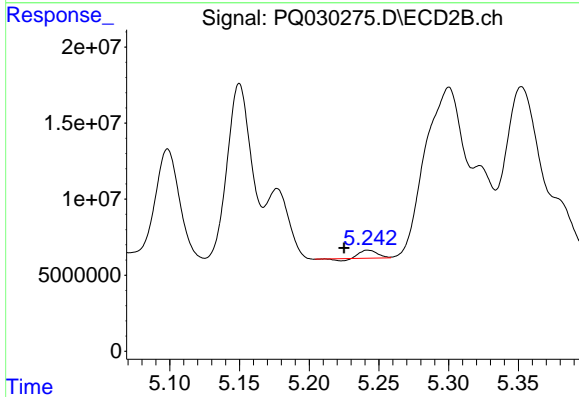
R.T.: 5.041 min
 Delta R.T.: -0.012 min
 Response: 247869527
 Conc: 558.73 ng/ml



#23 AR-1248-3

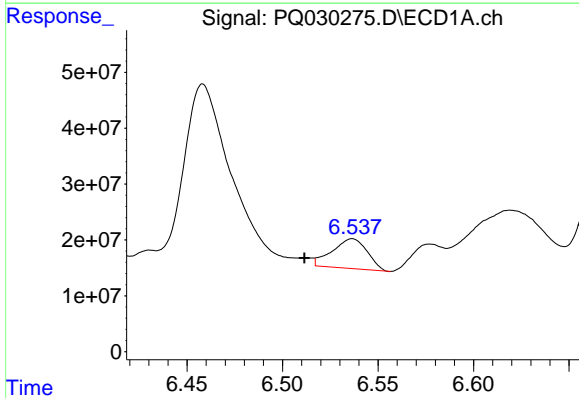
R.T.: 6.458 min
 Delta R.T.: 0.012 min
 Response: 527503273
 Conc: 260.34 ng/ml

Instrument :
 ECD_R
 ClientSampleId :



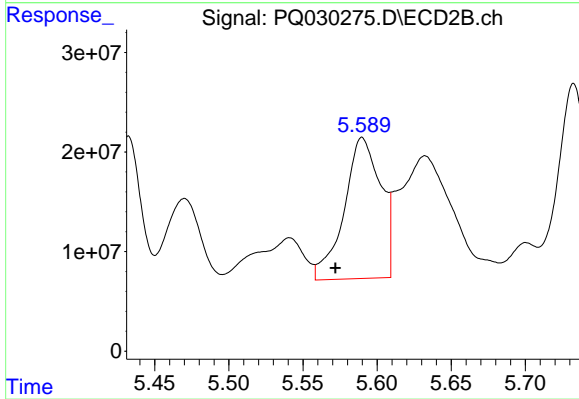
#23 AR-1248-3

R.T.: 5.242 min
 Delta R.T.: 0.017 min
 Response: 3974194
 Conc: 8.00 ng/ml



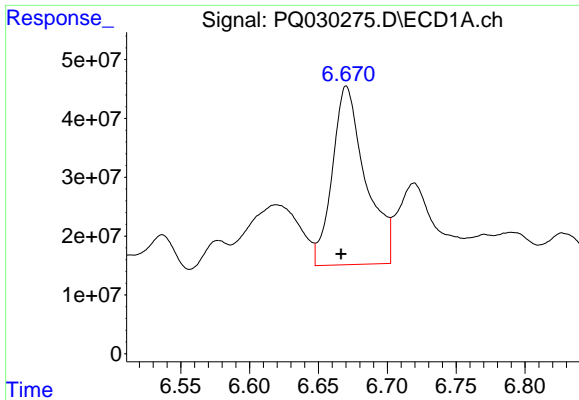
#24 AR-1248-4

R.T.: 6.537 min
 Delta R.T.: 0.025 min
 Response: 67712646
 Conc: 41.96 ng/ml



#24 AR-1248-4

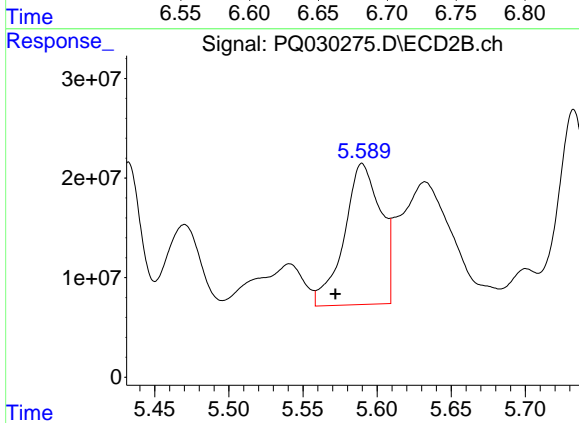
R.T.: 5.590 min
 Delta R.T.: 0.018 min
 Response: 242938954
 Conc: 290.56 ng/ml



#25 AR-1248-5

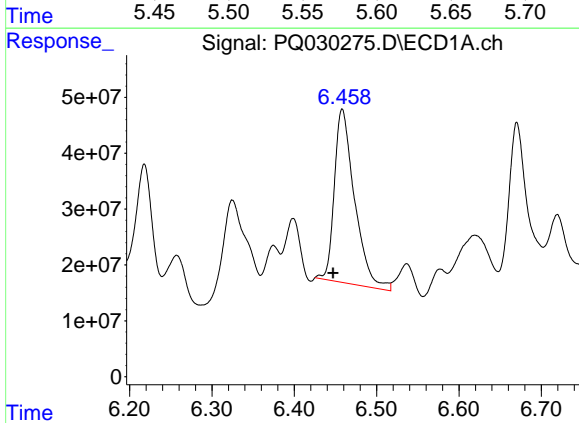
R.T.: 6.670 min
 Delta R.T.: 0.004 min
 Response: 507832415
 Conc: 300.93 ng/ml

Instrument :
 ECD_R
 ClientSampled :



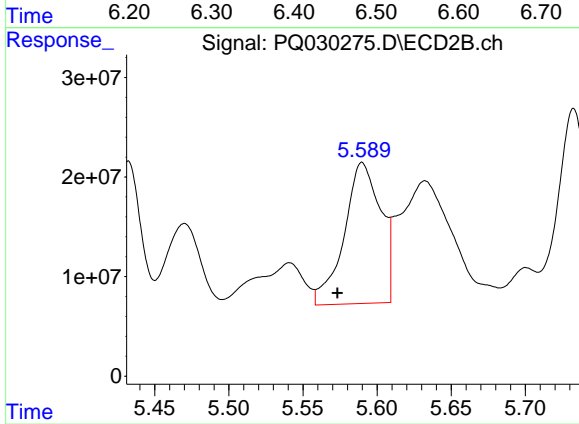
#25 AR-1248-5

R.T.: 5.590 min
 Delta R.T.: 0.018 min
 Response: 242938954
 Conc: 290.56 ng/ml



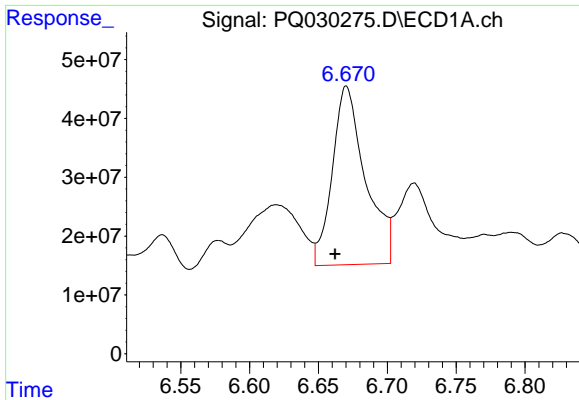
#26 AR-1254-1

R.T.: 6.458 min
 Delta R.T.: 0.011 min
 Response: 527503273
 Conc: 241.75 ng/ml



#26 AR-1254-1

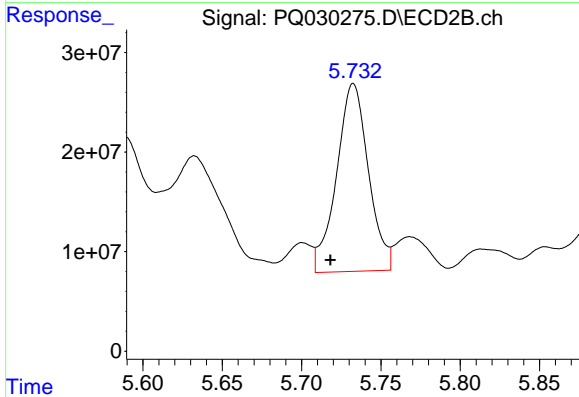
R.T.: 5.590 min
 Delta R.T.: 0.017 min
 Response: 242938954
 Conc: 271.51 ng/ml



#27 AR-1254-2

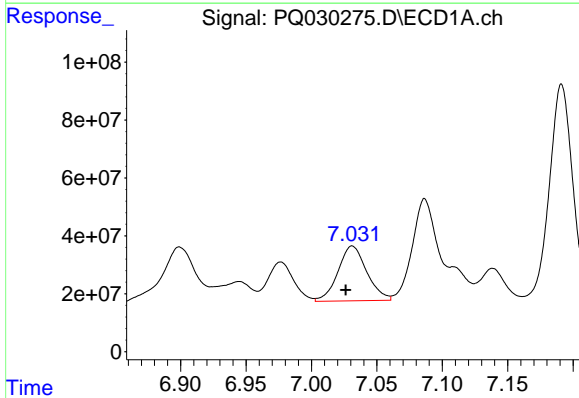
R.T.: 6.670 min
 Delta R.T.: 0.008 min
 Response: 507832415
 Conc: 196.23 ng/ml

Instrument :
 ECD_R
 ClientSampleId :



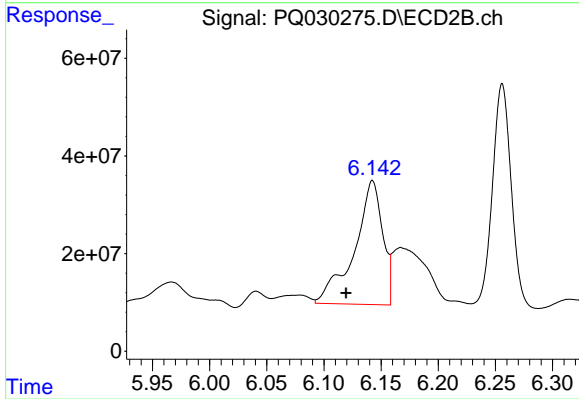
#27 AR-1254-2

R.T.: 5.733 min
 Delta R.T.: 0.014 min
 Response: 263751451
 Conc: 351.54 ng/ml



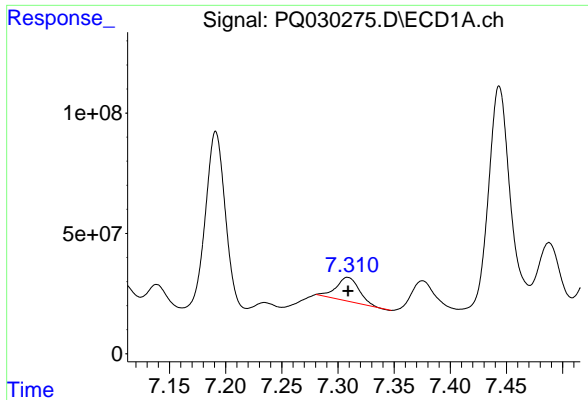
#28 AR-1254-3

R.T.: 7.031 min
 Delta R.T.: 0.005 min
 Response: 289589379
 Conc: 103.08 ng/ml



#28 AR-1254-3

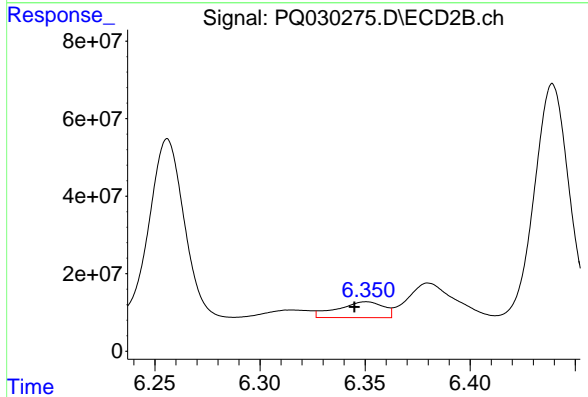
R.T.: 6.142 min
 Delta R.T.: 0.023 min
 Response: 435197613
 Conc: 342.33 ng/ml



#29 AR-1254-4

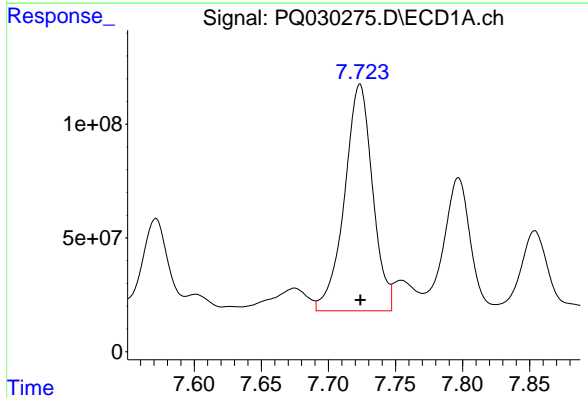
R.T.: 7.309 min
 Delta R.T.: 0.000 min
 Response: 139714039
 Conc: 70.16 ng/ml

Instrument :
 ECD_R
 ClientSampled :



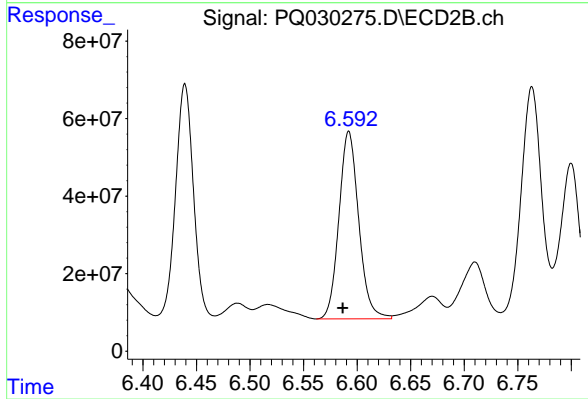
#29 AR-1254-4

R.T.: 6.351 min
 Delta R.T.: 0.006 min
 Response: 62397693
 Conc: 71.17 ng/ml



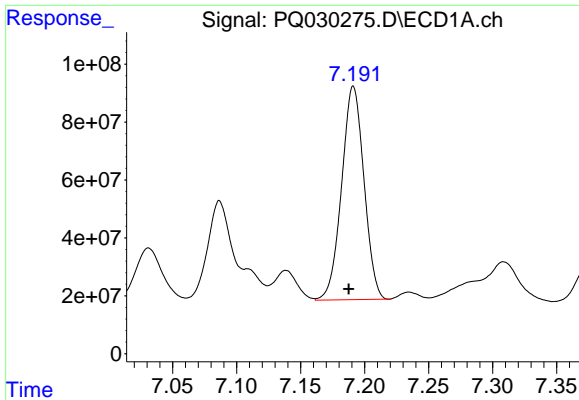
#30 AR-1254-5

R.T.: 7.723 min
 Delta R.T.: 0.000 min
 Response: 1450777142
 Conc: 585.33 ng/ml



#30 AR-1254-5

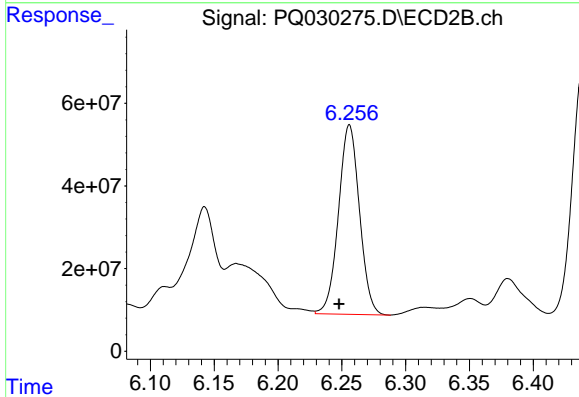
R.T.: 6.592 min
 Delta R.T.: 0.006 min
 Response: 622936797
 Conc: 1177.35 ng/ml



#31 AR-1260-1

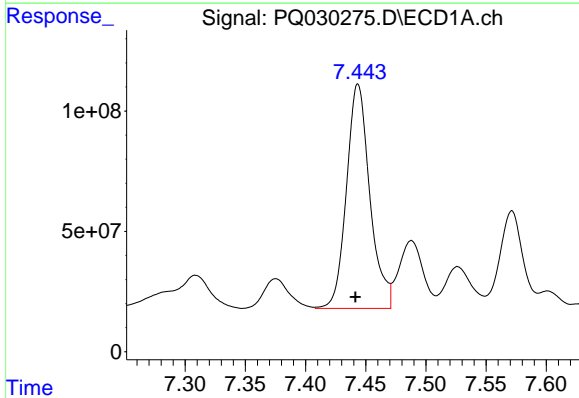
R.T.: 7.191 min
Delta R.T.: 0.004 min
Response: 895636043
Conc: 446.53 ng/ml

Instrument :
ECD_R
ClientSampleId :



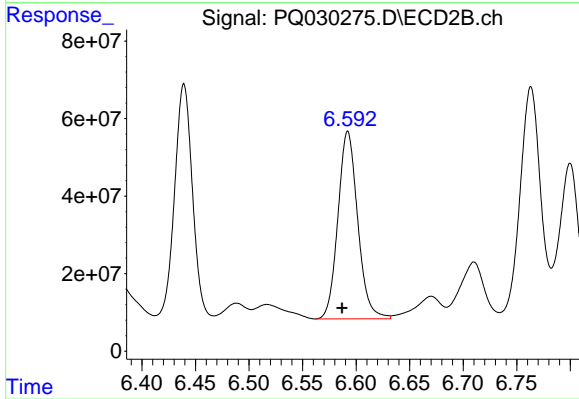
#31 AR-1260-1

R.T.: 6.256 min
Delta R.T.: 0.008 min
Response: 525222869
Conc: 527.97 ng/ml



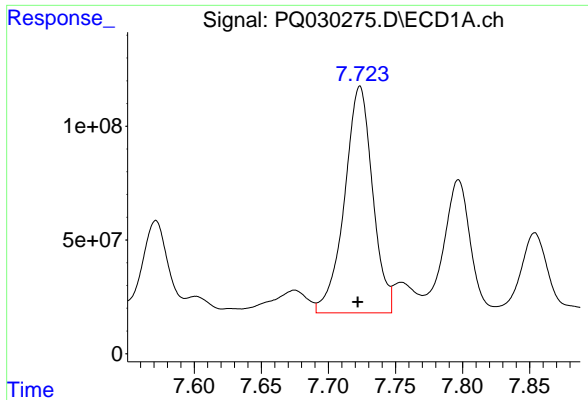
#32 AR-1260-2

R.T.: 7.444 min
Delta R.T.: 0.002 min
Response: 1258641078
Conc: 530.35 ng/ml



#32 AR-1260-2

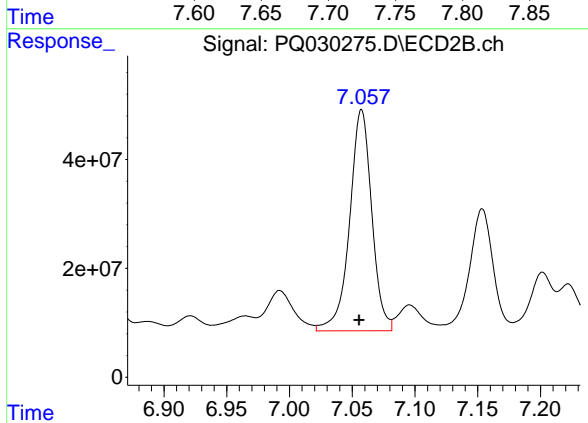
R.T.: 6.592 min
Delta R.T.: 0.005 min
Response: 622936797
Conc: 543.00 ng/ml



#33 AR-1260-3

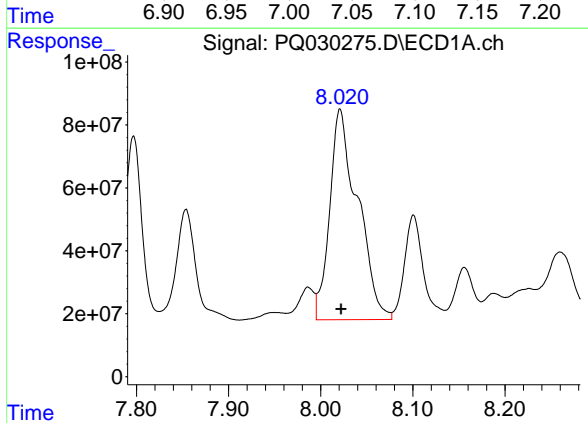
R.T.: 7.723 min
 Delta R.T.: 0.002 min
 Response: 1450777142
 Conc: 514.47 ng/ml

Instrument :
 ECD_R
 ClientSampled :



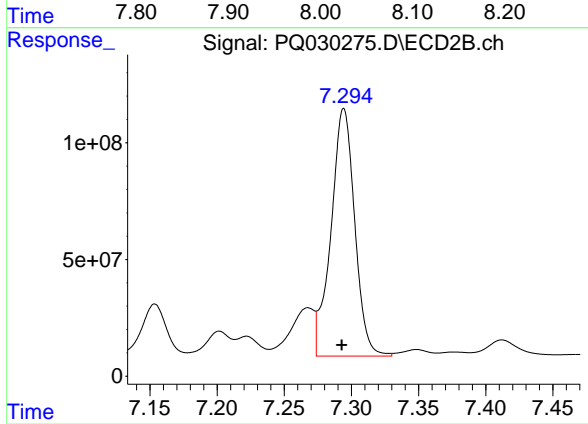
#33 AR-1260-3

R.T.: 7.057 min
 Delta R.T.: 0.002 min
 Response: 499675233
 Conc: 535.86 ng/ml



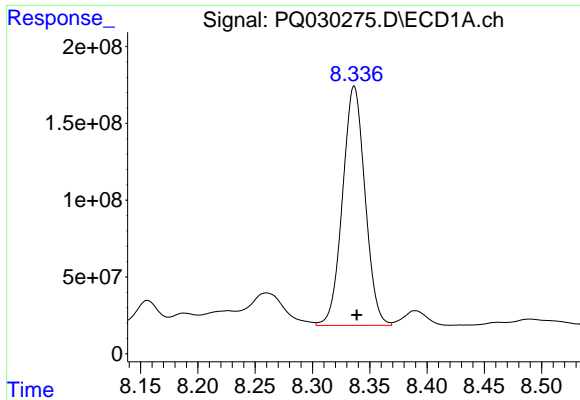
#34 AR-1260-4

R.T.: 8.021 min
 Delta R.T.: 0.000 min
 Response: 1412705759
 Conc: 705.97 ng/ml



#34 AR-1260-4

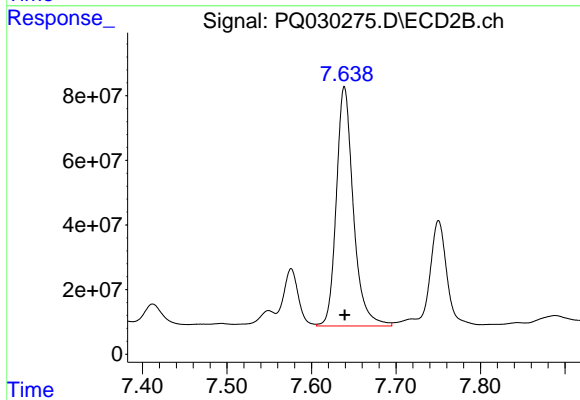
R.T.: 7.294 min
 Delta R.T.: 0.001 min
 Response: 1307238845
 Conc: 537.78 ng/ml



#35 AR-1260-5

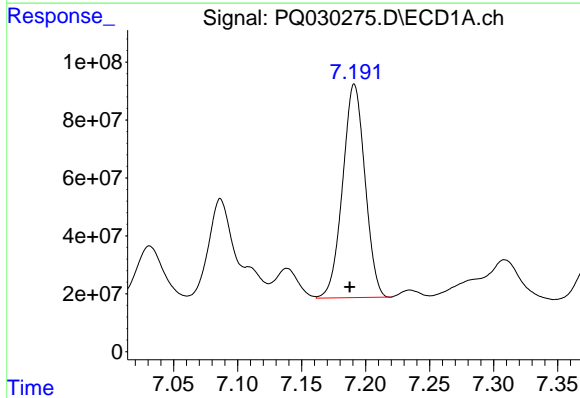
R.T.: 8.336 min
Delta R.T.: -0.002 min
Response: 2125700545
Conc: 533.46 ng/ml

Instrument :
ECD_R
ClientSampleId :



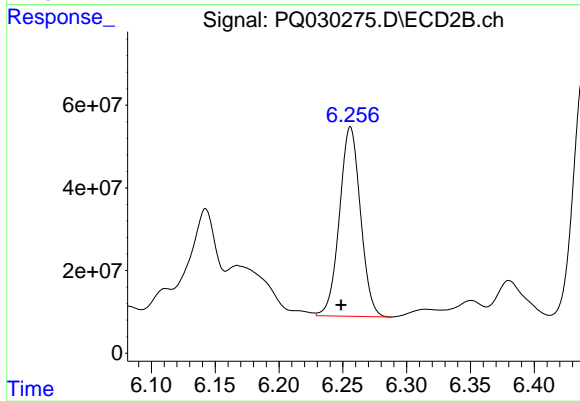
#35 AR-1260-5

R.T.: 7.639 min
Delta R.T.: 0.000 min
Response: 1036962931
Conc: 592.11 ng/ml



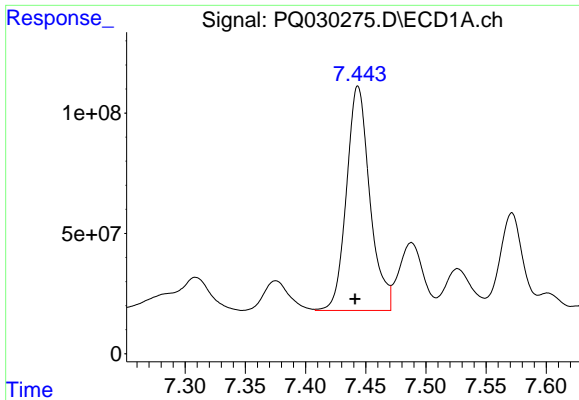
#36 AR-1262-1

R.T.: 7.191 min
Delta R.T.: 0.004 min
Response: 895636043
Conc: 628.08 ng/ml



#36 AR-1262-1

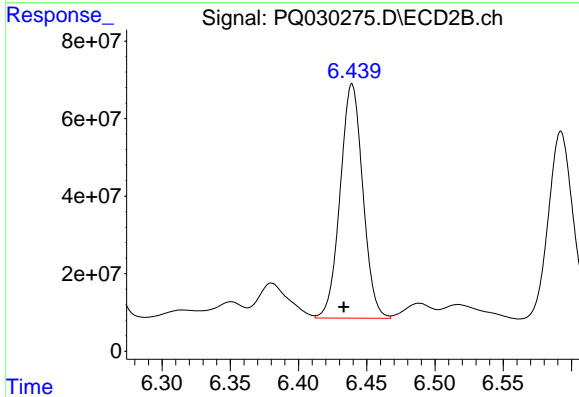
R.T.: 6.256 min
Delta R.T.: 0.008 min
Response: 525222869
Conc: 687.08 ng/ml



#37 AR-1262-2

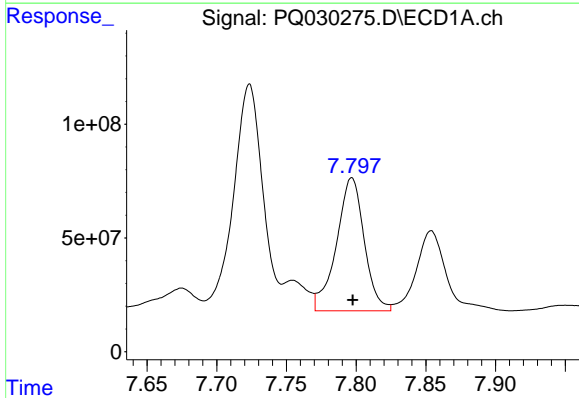
R.T.: 7.444 min
Delta R.T.: 0.002 min
Response: 1258641078
Conc: 685.88 ng/ml

Instrument :
ECD_R
ClientSampled :



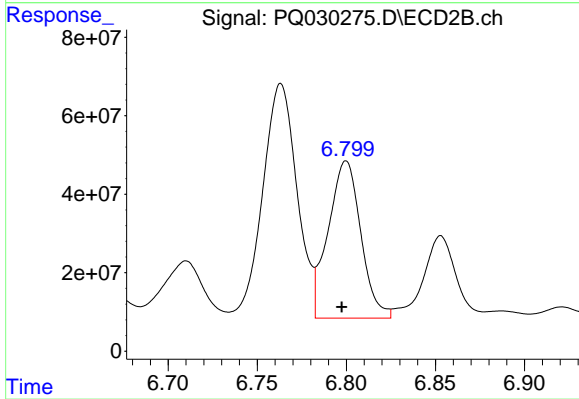
#37 AR-1262-2

R.T.: 6.439 min
Delta R.T.: 0.006 min
Response: 698834113
Conc: 689.93 ng/ml



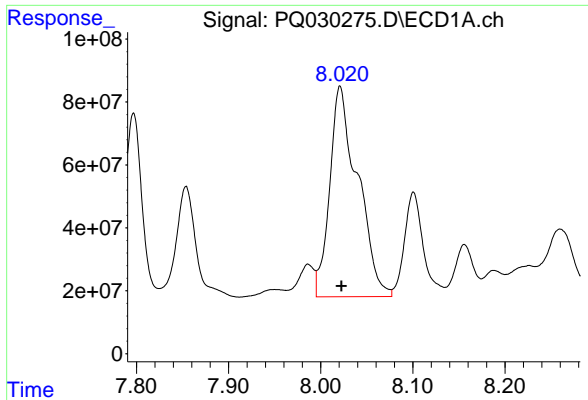
#38 AR-1262-3

R.T.: 7.797 min
Delta R.T.: 0.000 min
Response: 811557271
Conc: 353.34 ng/ml



#38 AR-1262-3

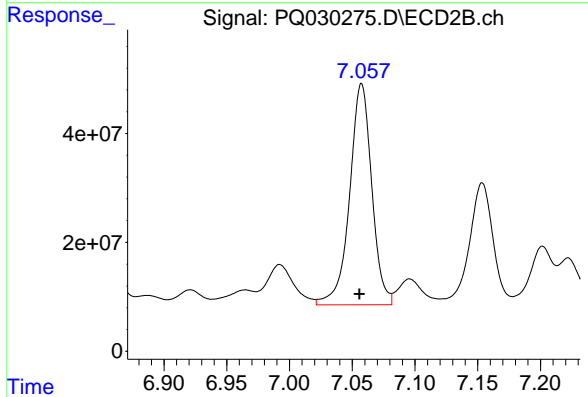
R.T.: 6.800 min
Delta R.T.: 0.002 min
Response: 511313441
Conc: 406.01 ng/ml



#39 AR-1262-4

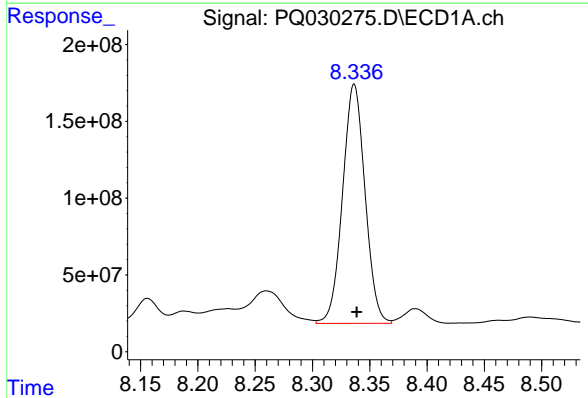
R.T.: 8.021 min
 Delta R.T.: -0.002 min
 Response: 1412705759
 Conc: 641.08 ng/ml

Instrument :
 ECD_R
 ClientSampleId :



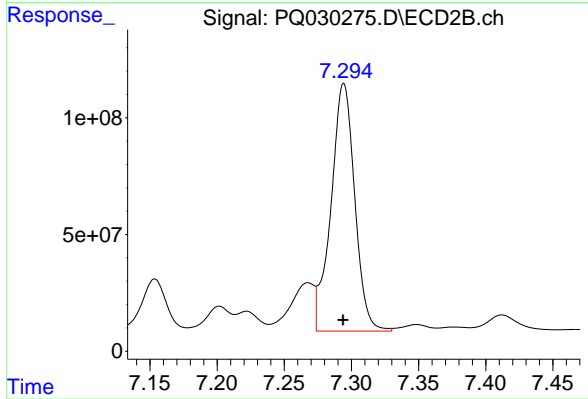
#39 AR-1262-4

R.T.: 7.057 min
 Delta R.T.: 0.002 min
 Response: 499675233
 Conc: 462.50 ng/ml



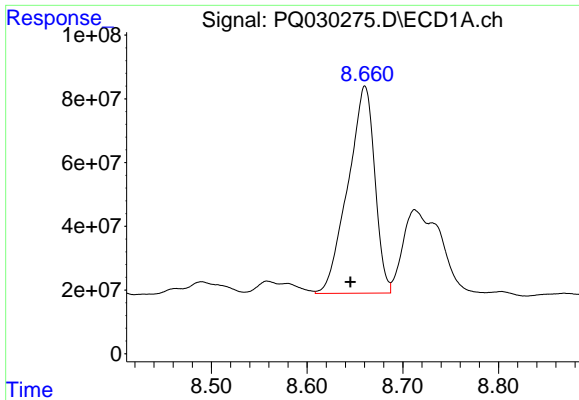
#40 AR-1262-5

R.T.: 8.336 min
 Delta R.T.: -0.002 min
 Response: 2125700545
 Conc: 424.93 ng/ml



#40 AR-1262-5

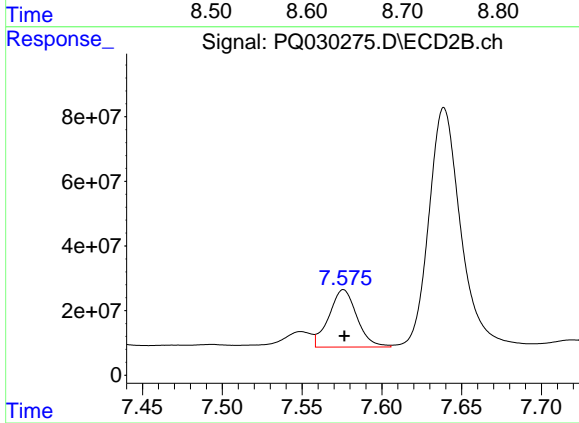
R.T.: 7.294 min
 Delta R.T.: 0.000 min
 Response: 1307238845
 Conc: 539.64 ng/ml



#41 AR-1268-1

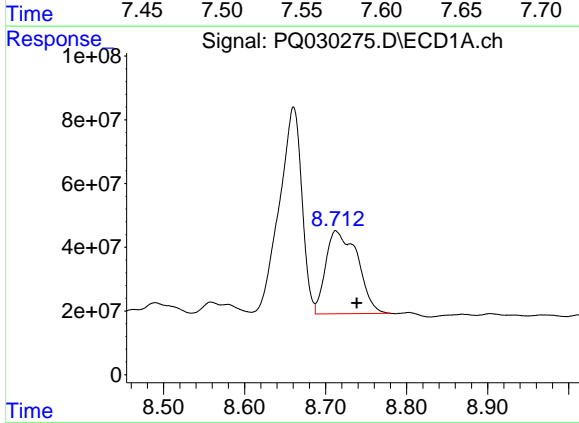
R.T.: 8.660 min
 Delta R.T.: 0.015 min
 Response: 1264526898
 Conc: 298.48 ng/ml

Instrument :
 ECD_R
 ClientSampleId :



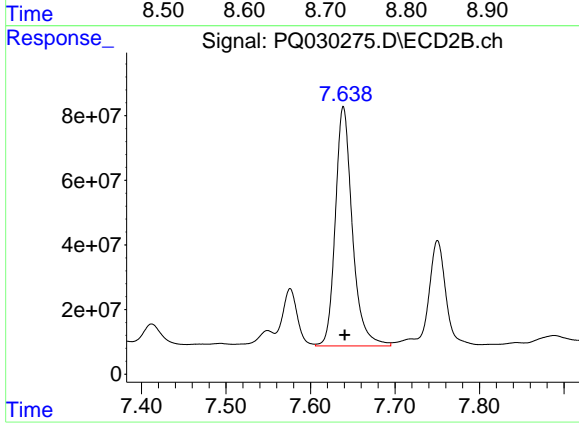
#41 AR-1268-1

R.T.: 7.576 min
 Delta R.T.: 0.000 min
 Response: 217176798
 Conc: 90.89 ng/ml



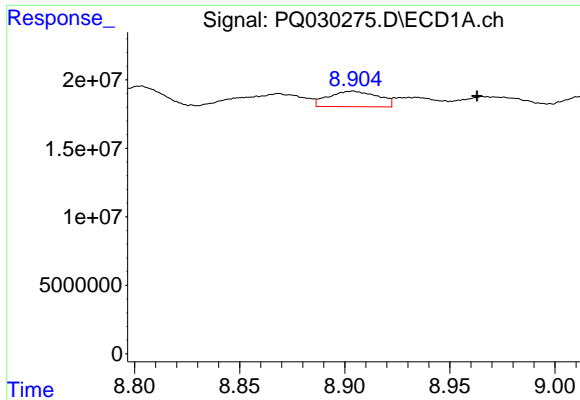
#42 AR-1268-2

R.T.: 8.713 min
 Delta R.T.: -0.026 min
 Response: 709034810
 Conc: 183.45 ng/ml



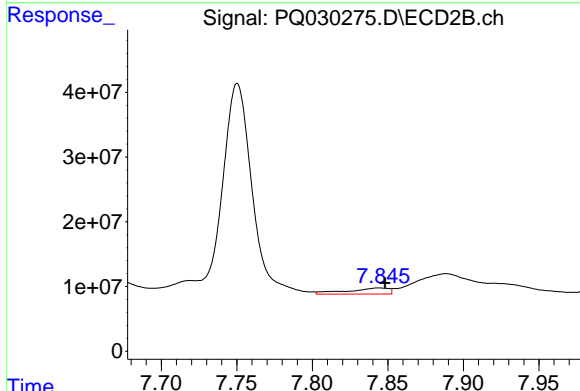
#42 AR-1268-2

R.T.: 7.639 min
 Delta R.T.: -0.002 min
 Response: 1036962931
 Conc: 429.63 ng/ml

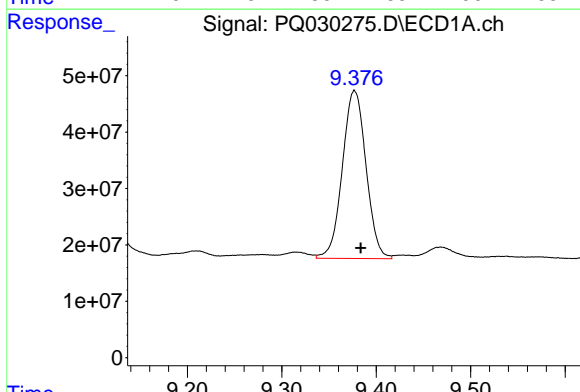


#43 AR-1268-3
 R.T.: 8.904 min
 Delta R.T.: -0.059 min
 Response: 18559030
 Conc: 5.70 ng/ml

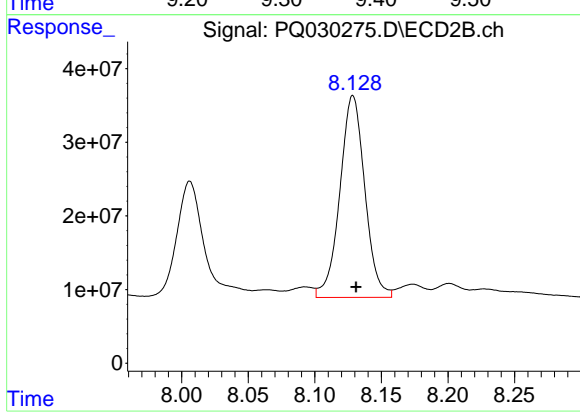
Instrument :
 ECD_R
 ClientSampleId :



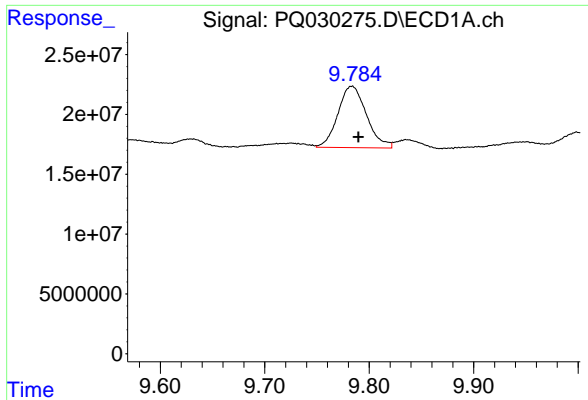
#43 AR-1268-3
 R.T.: 7.844 min
 Delta R.T.: -0.004 min
 Response: 18077442
 Conc: 9.24 ng/ml



#44 AR-1268-4
 R.T.: 9.377 min
 Delta R.T.: -0.007 min
 Response: 518019952
 Conc: 335.09 ng/ml



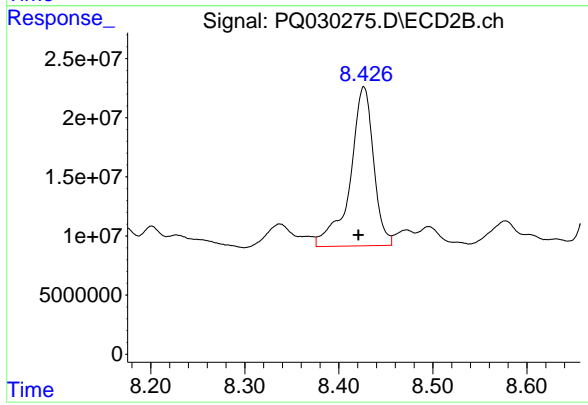
#44 AR-1268-4
 R.T.: 8.129 min
 Delta R.T.: -0.002 min
 Response: 357619627
 Conc: 426.64 ng/ml



#45 AR-1268-5

R.T.: 9.783 min
Delta R.T.: -0.006 min
Response: 97736775
Conc: 9.30 ng/ml

Instrument :
ECD_R
ClientSampleId :



#45 AR-1268-5

R.T.: 8.427 min
Delta R.T.: 0.006 min
Response: 232510003
Conc: 36.58 ng/ml