

Data Path : Z:\pestpcbsrv\HPCHEM1\ECD_R\Data\PR070818\
 Data File : PR029981.D
 Signal(s) : Signal #1: ECD1A.ch Signal #2: ECD2B.ch
 Acq On : 06 Jul 2018 12:11
 Operator : UA/SM
 Sample : PB110848BS
 Misc :
 ALS Vial : 5 Sample Multiplier: 1

Instrument :
 ECD_R
ClientSampled :
 PB110848BS

Manual Integrations
APPROVED
 Sohil
 7/7/2018 9:18:06 AM

Integration File signal 1: autoint1.e
 Integration File signal 2: autoint2.e
 Quant Time: Jul 06 12:33:35 2018
 Quant Method : \\TERASTORAGE\Terastorage\pestpcbsrv\HPCHEM1\ECD_R\Method\PR070518.M
 Quant Title : GC EXTRACTABLES
 QLast Update : Tue Jul 03 19:13:30 2018
 Response via : Initial Calibration
 Integrator: ChemStation

Volume Inj. : 2 µl
 Signal #1 Phase : ZB-MR1 Signal #2 Phase: ZB-MR2
 Signal #1 Info : 30Mx0.32mmx 0.50µ Signal #2 Info : 30M x 0.32mm x 0.25µm

Compound	RT#1	RT#2	Resp#1	Resp#2	ng/ml	ng/ml

System Monitoring Compounds						
1) SA Tetrachlo...	4.565	3.711	528.2E6	716.8E6	20.471	16.613
2) SA Decachlor...	10.329	8.631	550.0E6	463.9E6	21.294	22.362
Target Compounds						
3) L1 AR-1016-1	5.457	4.560	136.0E6	276.6E6	230.229	213.337
4) L1 AR-1016-2	5.807	4.968	167.3E6	289.5E6	218.594	202.600
5) L1 AR-1016-3	5.905	5.047	143.0E6	294.2E6	219.683	205.000
6) L1 AR-1016-4	6.198	5.217	134.8E6	302.6E6	213.365	192.697
7) L1 AR-1016-5	6.338	5.561	114.7E6	236.1E6	170.145	141.332
31) L7 AR-1260-1	7.318	6.229	244.8E6	471.0E6	193.727m	163.801
32) L7 AR-1260-2	7.572	6.414	316.2E6	698.1E6	196.052	199.448
33) L7 AR-1260-3	7.931	6.737	212.1E6	533.6E6	172.544	169.429
34) L7 AR-1260-4	8.483	7.269	516.0E6	681.6E6	181.323	166.378
35) L7 AR-1260-5	8.815	7.613	335.3E6	438.4E6	198.906	175.646

(f)=RT Delta > 1/2 Window (#)=Amounts differ by > 25% (m)=manual int.

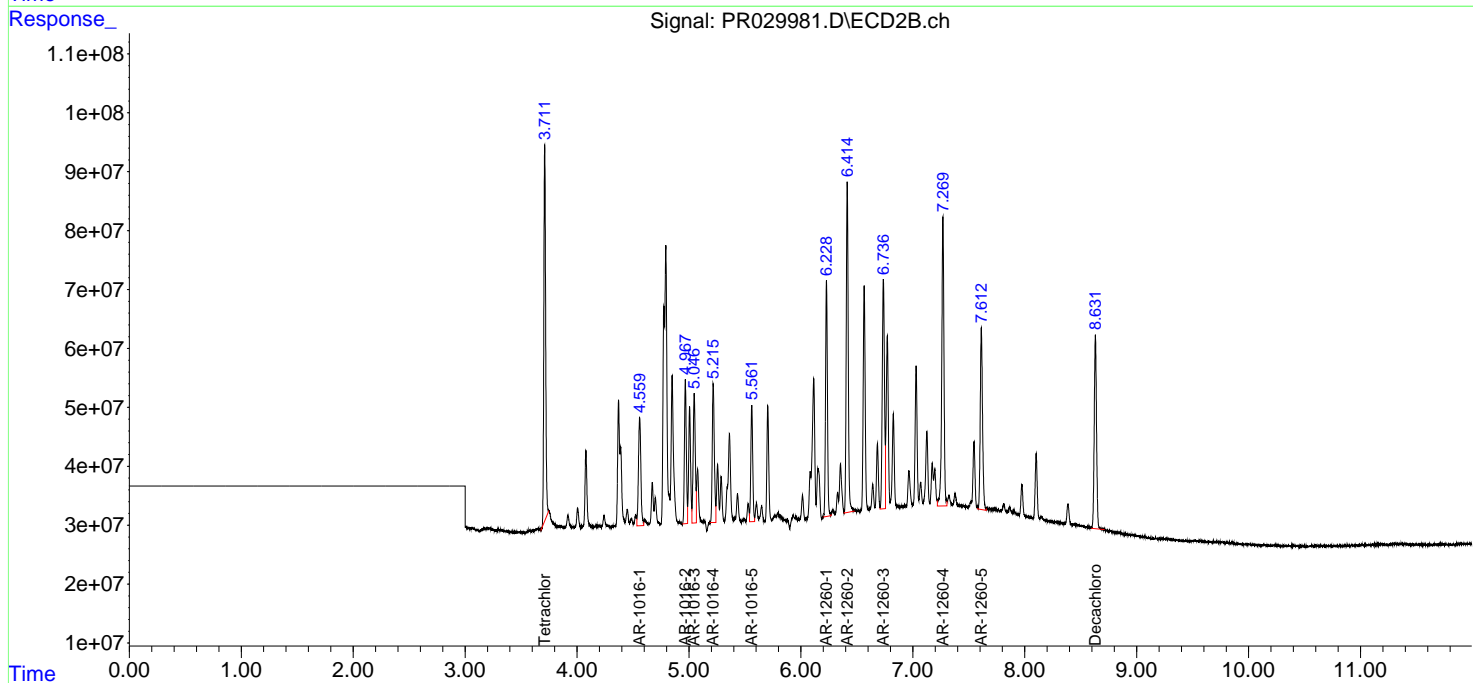
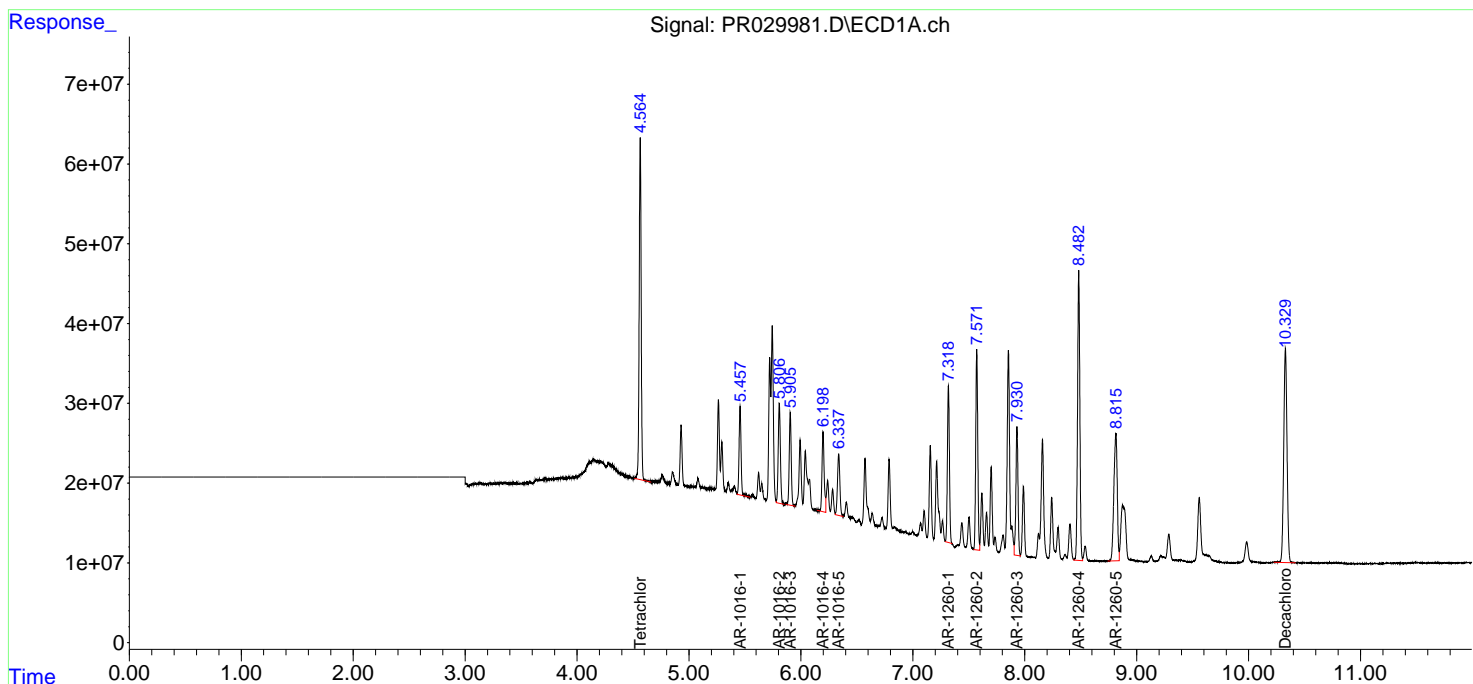
Data Path : Z:\pestpcbsrv\HPCHEM1\ECD_R\Data\PR070818\
 Data File : PR029981.D
 Signal(s) : Signal #1: ECD1A.ch Signal #2: ECD2B.ch
 Acq On : 06 Jul 2018 12:11
 Operator : UA/SM
 Sample : PB110848BS
 Misc :
 ALS Vial : 5 Sample Multiplier: 1

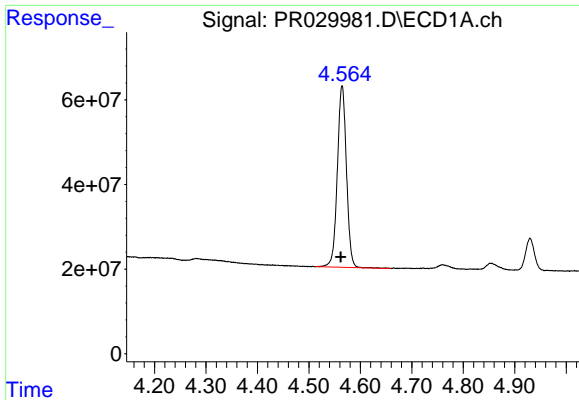
Instrument :
 ECD_R
Client Sampled :
 PB110848BS

Manual Integrations
APPROVED
 Sohil
 7/7/2018 9:18:06 AM

Integration File signal 1: autoint1.e
 Integration File signal 2: autoint2.e
 Quant Time: Jul 06 12:33:35 2018
 Quant Method : \\TERASTORAGE\Terastorage\pestpcbsrv\HPCHEM1\ECD_R\Method\PR070518.M
 Quant Title : GC EXTRACTABLES
 QLast Update : Tue Jul 03 19:13:30 2018
 Response via : Initial Calibration
 Integrator: ChemStation

Volume Inj. : 2 µl
 Signal #1 Phase : ZB-MR1 Signal #2 Phase: ZB-MR2
 Signal #1 Info : 30Mx0.32mmx 0.50µ Signal #2 Info : 30M x 0.32mm x 0.25µm



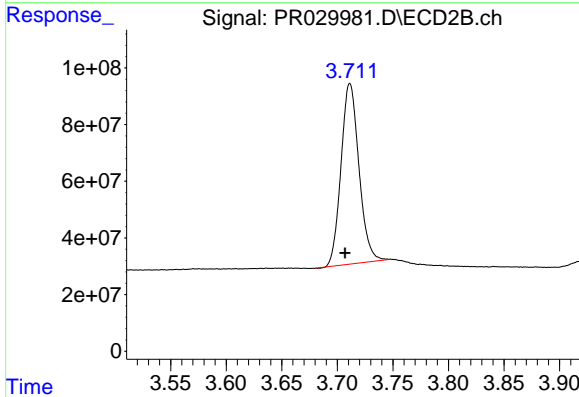


#1 Tetrachloro-m-xylene

R.T.: 4.565 min
 Delta R.T.: 0.003 min
 Response: 528154227
 Conc: 20.47 ng/ml

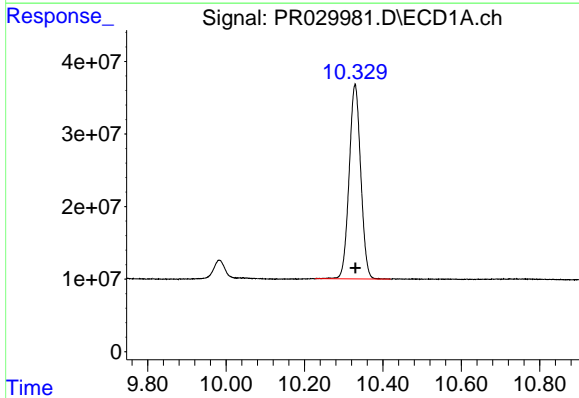
Instrument :
 ECD_R
 ClientSampled :
 PB110848BS

Manual Integrations
 APPROVED
 Sohil
 7/7/2018 9:18:06 AM



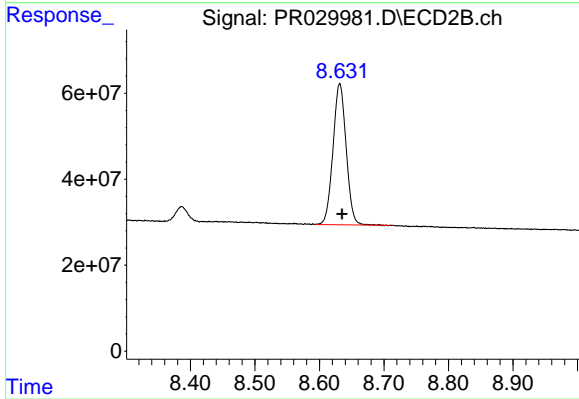
#1 Tetrachloro-m-xylene

R.T.: 3.711 min
 Delta R.T.: 0.004 min
 Response: 716764142
 Conc: 16.61 ng/ml



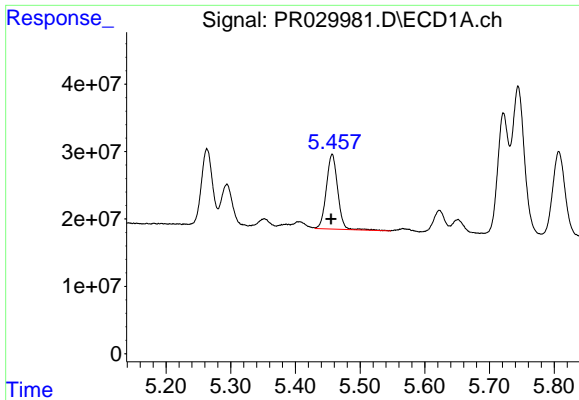
#2 Decachlorobiphenyl

R.T.: 10.329 min
 Delta R.T.: 0.000 min
 Response: 549958013
 Conc: 21.29 ng/ml



#2 Decachlorobiphenyl

R.T.: 8.631 min
 Delta R.T.: -0.004 min
 Response: 463901235
 Conc: 22.36 ng/ml

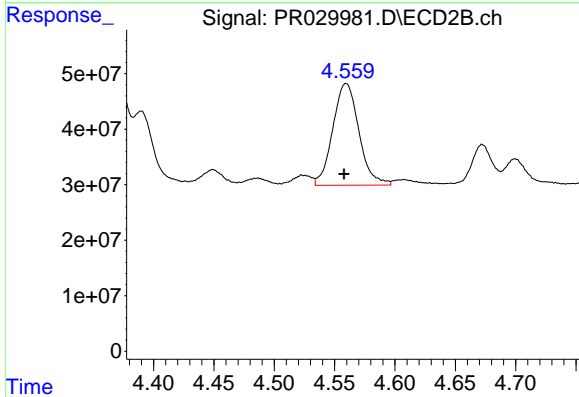


#3 AR-1016-1

R.T.: 5.457 min
 Delta R.T.: 0.002 min
 Response: 135960022
 Conc: 230.23 ng/ml

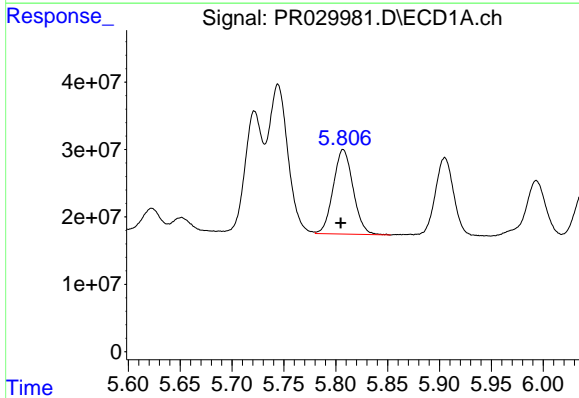
Instrument :
 ECD_R
ClientSampled :
 PB110848BS

Manual Integrations
APPROVED
 Sohil
 7/7/2018 9:18:06 AM



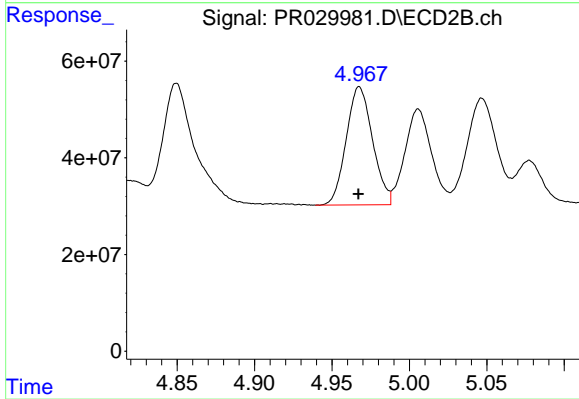
#3 AR-1016-1

R.T.: 4.560 min
 Delta R.T.: 0.002 min
 Response: 276572155
 Conc: 213.34 ng/ml



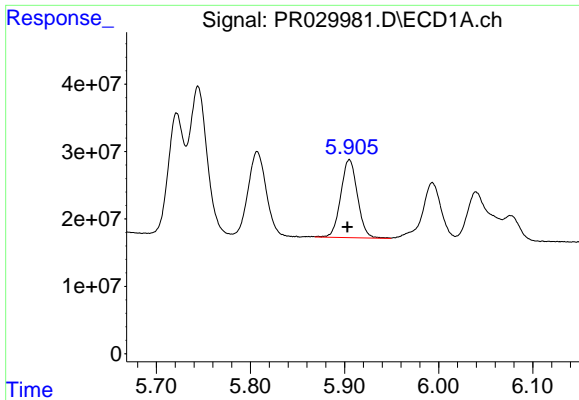
#4 AR-1016-2

R.T.: 5.807 min
 Delta R.T.: 0.002 min
 Response: 167296182
 Conc: 218.59 ng/ml



#4 AR-1016-2

R.T.: 4.968 min
 Delta R.T.: 0.000 min
 Response: 289548723
 Conc: 202.60 ng/ml



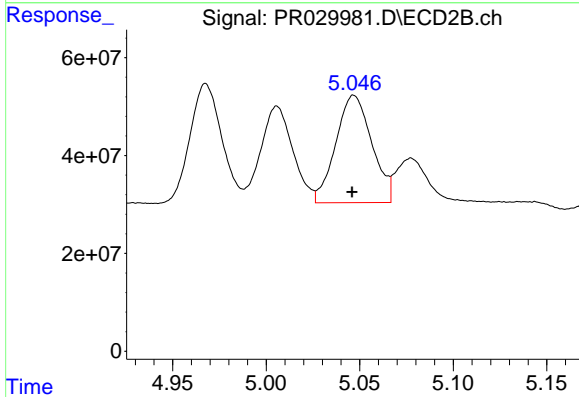
#5 AR-1016-3

R.T.: 5.905 min
 Delta R.T.: 0.002 min
 Response: 142970531
 Conc: 219.68 ng/ml

Instrument :
 ECD_R
 ClientSampled :
 PB110848BS

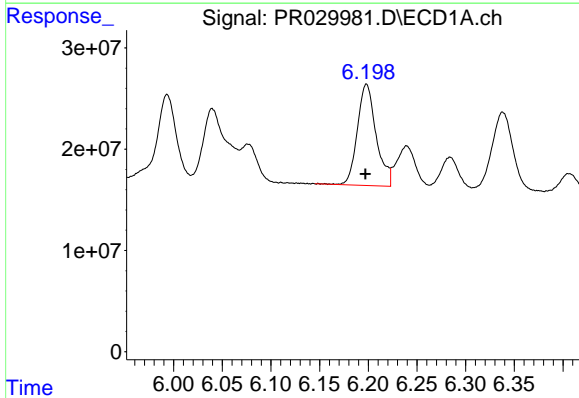
Manual Integrations
 APPROVED

Sohil
 7/7/2018 9:18:06 AM



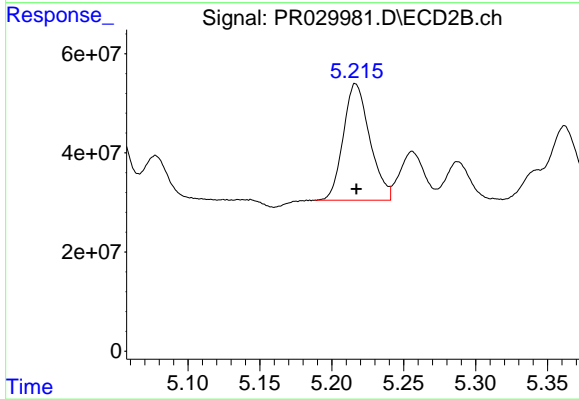
#5 AR-1016-3

R.T.: 5.047 min
 Delta R.T.: 0.000 min
 Response: 294200078
 Conc: 205.00 ng/ml



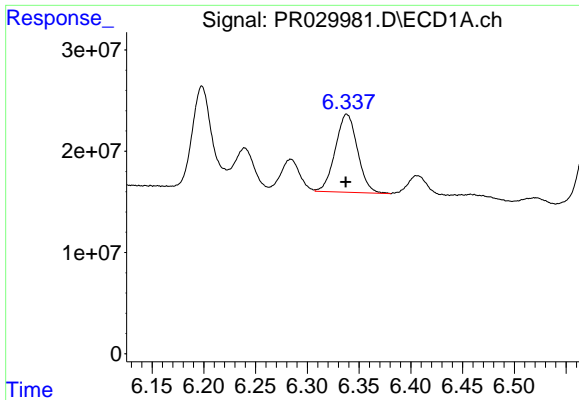
#6 AR-1016-4

R.T.: 6.198 min
 Delta R.T.: 0.001 min
 Response: 134803470
 Conc: 213.37 ng/ml



#6 AR-1016-4

R.T.: 5.217 min
 Delta R.T.: 0.000 min
 Response: 302635554
 Conc: 192.70 ng/ml

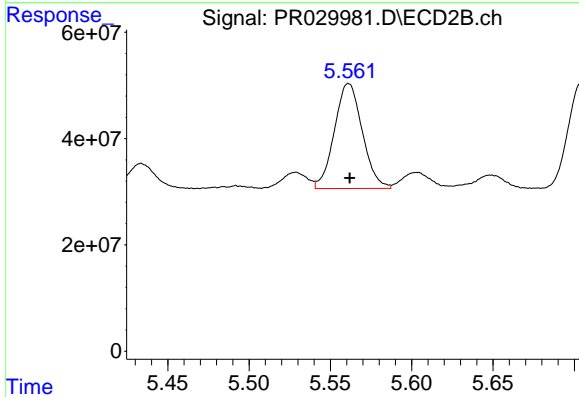


#7 AR-1016-5

R.T.: 6.338 min
 Delta R.T.: 0.001 min
 Response: 114725710
 Conc: 170.14 ng/ml

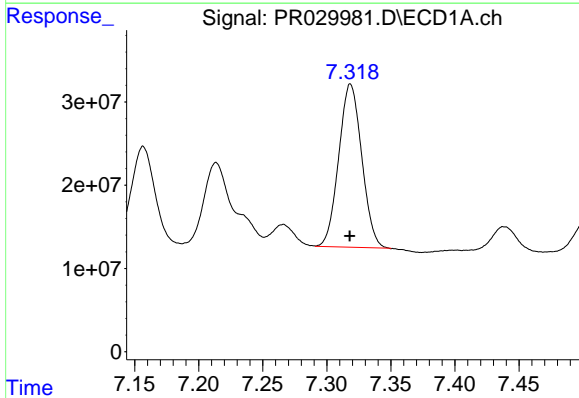
Instrument :
 ECD_R
ClientSampled :
 PB110848BS

Manual Integrations
APPROVED
 Sohil
 7/7/2018 9:18:06 AM



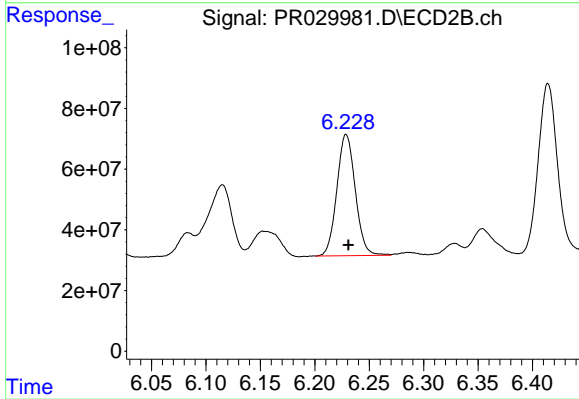
#7 AR-1016-5

R.T.: 5.561 min
 Delta R.T.: 0.000 min
 Response: 236107920
 Conc: 141.33 ng/ml



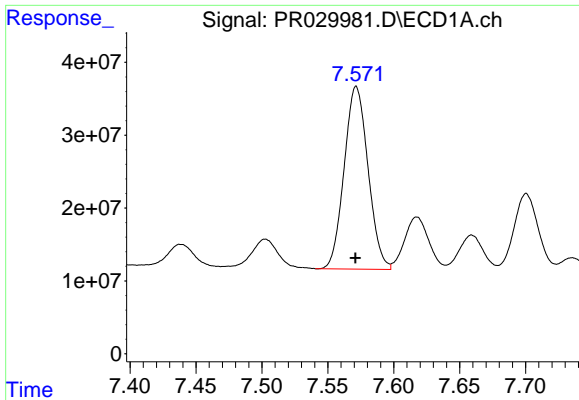
#31 AR-1260-1

R.T.: 7.318 min
 Delta R.T.: 0.000 min
 Response: 244812998
 Conc: 193.73 ng/ml m



#31 AR-1260-1

R.T.: 6.229 min
 Delta R.T.: -0.002 min
 Response: 471024126
 Conc: 163.80 ng/ml

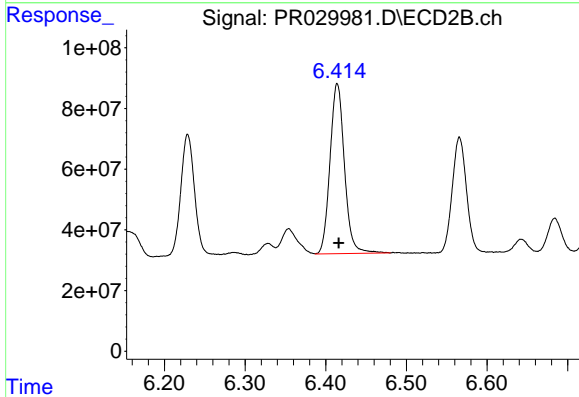


#32 AR-1260-2

R.T.: 7.572 min
 Delta R.T.: 0.000 min
 Response: 316209192
 Conc: 196.05 ng/ml

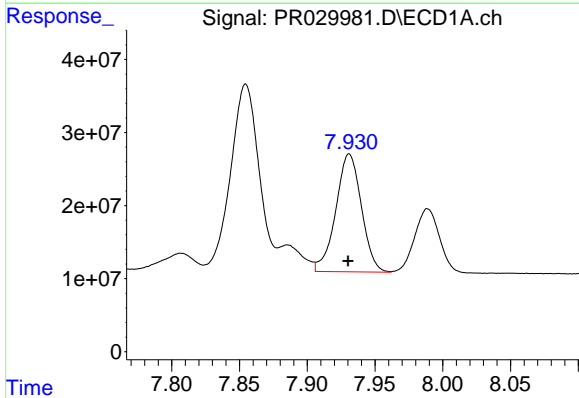
Instrument :
 ECD_R
 ClientSampled :
 PB110848BS

Manual Integrations
 APPROVED
 Sohil
 7/7/2018 9:18:06 AM



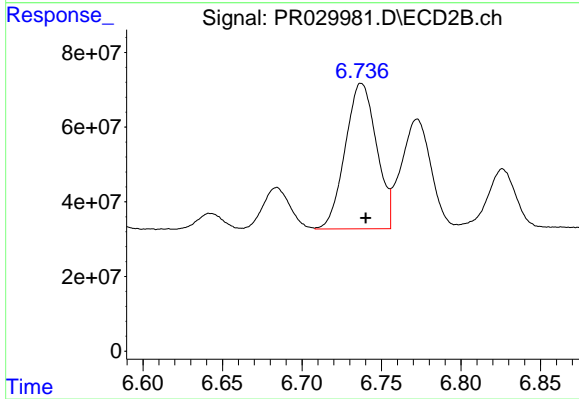
#32 AR-1260-2

R.T.: 6.414 min
 Delta R.T.: -0.002 min
 Response: 698102945
 Conc: 199.45 ng/ml



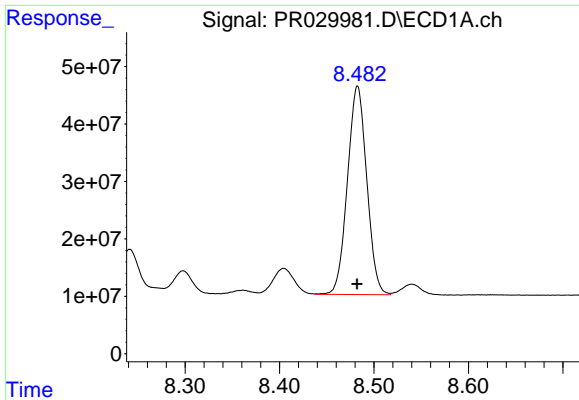
#33 AR-1260-3

R.T.: 7.931 min
 Delta R.T.: 0.000 min
 Response: 212109066
 Conc: 172.54 ng/ml



#33 AR-1260-3

R.T.: 6.737 min
 Delta R.T.: -0.003 min
 Response: 533587304
 Conc: 169.43 ng/ml

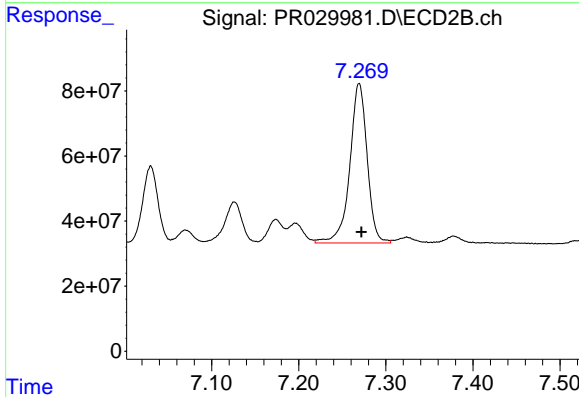


#34 AR-1260-4

R.T.: 8.483 min
 Delta R.T.: 0.000 min
 Response: 516010457
 Conc: 181.32 ng/ml

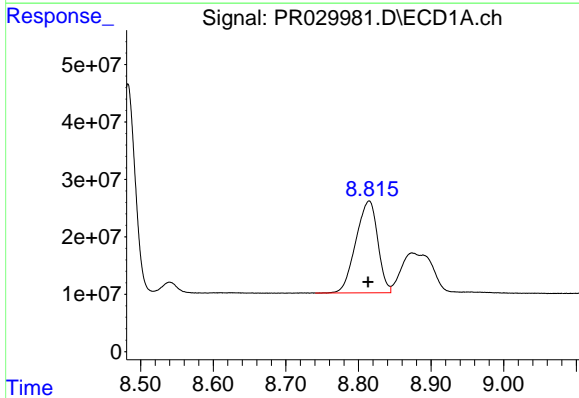
Instrument :
 ECD_R
ClientSampled :
 PB110848BS

Manual Integrations
APPROVED
 Sohil
 7/7/2018 9:18:06 AM



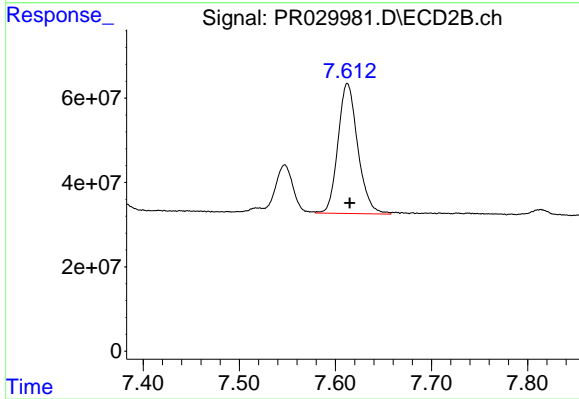
#34 AR-1260-4

R.T.: 7.269 min
 Delta R.T.: -0.003 min
 Response: 681571381
 Conc: 166.38 ng/ml



#35 AR-1260-5

R.T.: 8.815 min
 Delta R.T.: 0.002 min
 Response: 335334991
 Conc: 198.91 ng/ml



#35 AR-1260-5

R.T.: 7.613 min
 Delta R.T.: -0.002 min
 Response: 438354436
 Conc: 175.65 ng/ml