

Data Path : Z:\pestpcbsrv\HPCHEM1\ECD_R\Data\PR070819\
 Data File : PR039100.D
 Signal(s) : Signal #1: ECD1A.ch Signal #2: ECD2B.ch
 Acq On : 08 Jul 2019 12:07
 Operator : SM\AJ
 Sample : K3624-03
 Misc :
 ALS Vial : 10 Sample Multiplier: 1

Instrument :
 ECD_R
 ClientSampleId :
 PL-01-070319-B

Integration File signal 1: autoint1.e
 Integration File signal 2: autoint2.e
 Quant Time: Jul 09 03:23:36 2019
 Quant Method : Z:\pestpcbsrv\HPCHEM1\ECD_R\Method\PR070119.M
 Quant Title : GC EXTRACTABLES
 QLast Update : Mon Jul 01 17:21:12 2019
 Response via : Initial Calibration
 Integrator: ChemStation

Volume Inj. : 2 µl
 Signal #1 Phase : ZB-MR1 Signal #2 Phase: ZB-MR2
 Signal #1 Info : 30Mx0.32mmx 0.50µ Signal #2 Info : 30M x 0.32mm x 0.25µm

Compound	RT#1	RT#2	Resp#1	Resp#2	ng/ml	ng/ml
----------	------	------	--------	--------	-------	-------

 System Monitoring Compounds

1) SA Tetrachlo...	3.769	4.614	34005493	105.2E6	19.851	16.505
2) SA Decachlor...	8.710	10.352	22203308	87482563	9.602	11.327

Target Compounds

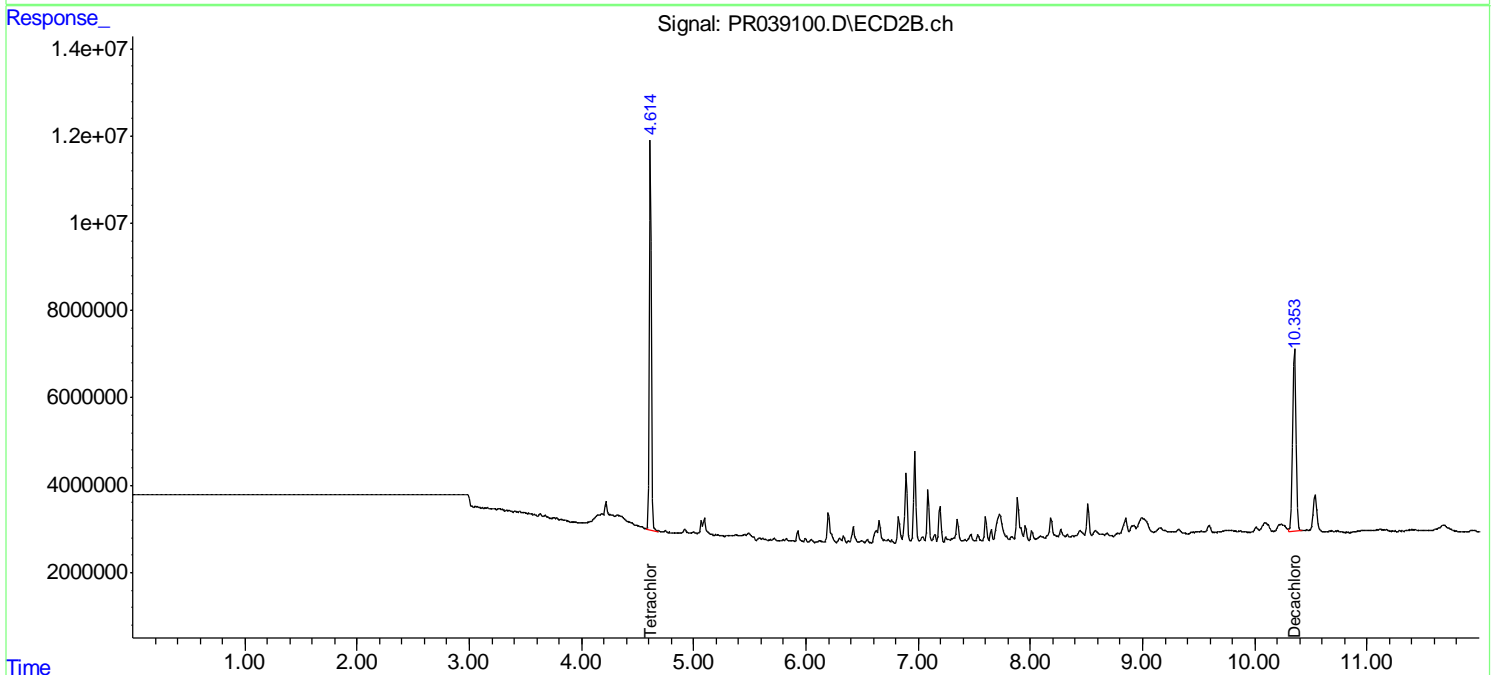
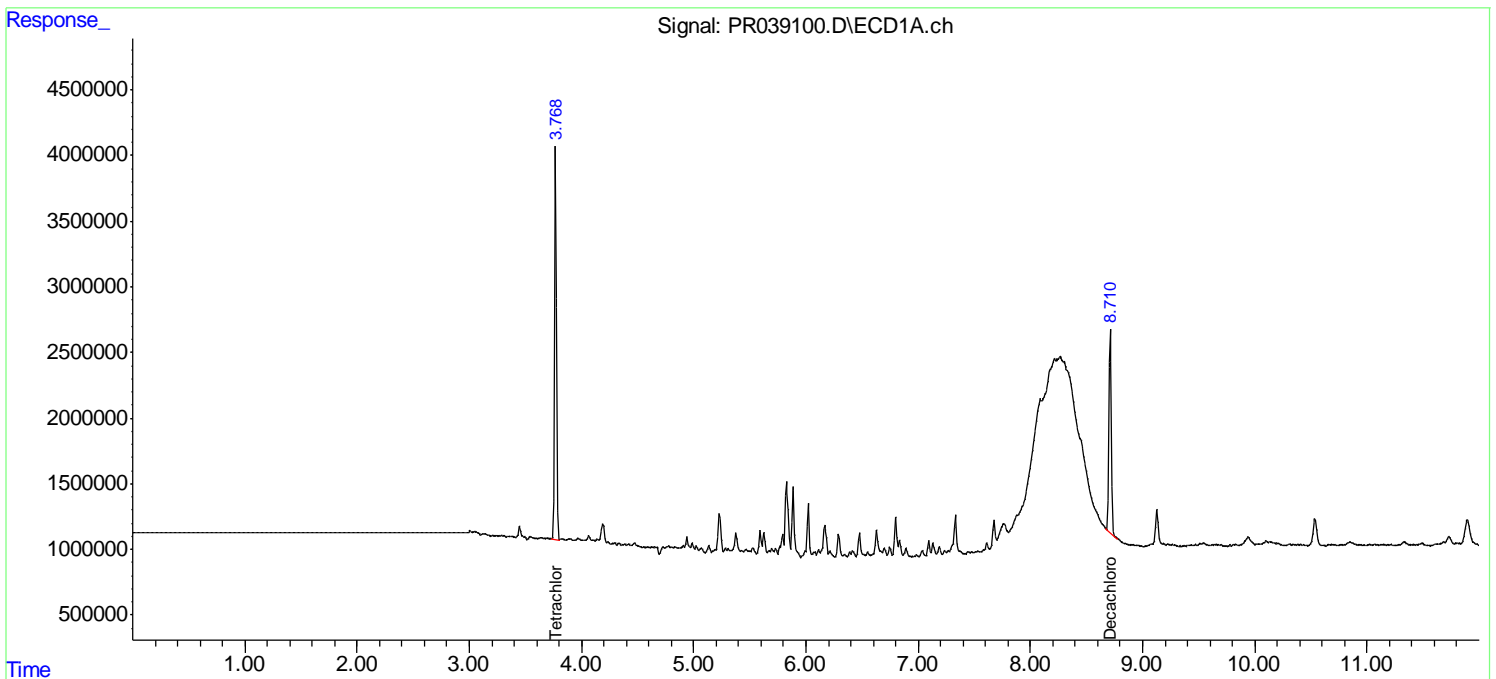
(f)=RT Delta > 1/2 Window (#)=Amounts differ by > 25% (m)=manual int.

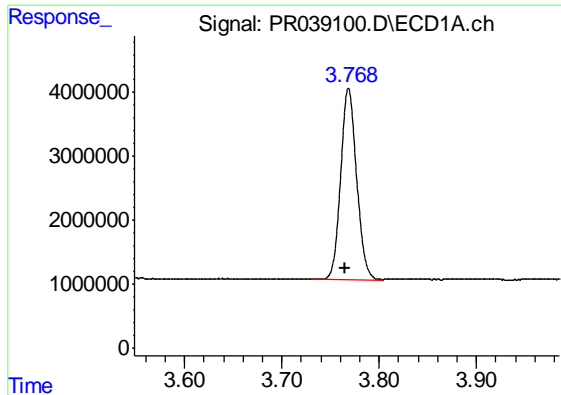
Data Path : Z:\pestpcbsrv\HPCHEM1\ECD_R\Data\PR070819\
 Data File : PR039100.D
 Signal(s) : Signal #1: ECD1A.ch Signal #2: ECD2B.ch
 Acq On : 08 Jul 2019 12:07
 Operator : SM\AJ
 Sample : K3624-03
 Misc :
 ALS Vial : 10 Sample Multiplier: 1

Instrument :
 ECD_R
 ClientSampleId :
 PL-01-070319-B

Integration File signal 1: autoint1.e
 Integration File signal 2: autoint2.e
 Quant Time: Jul 09 03:23:36 2019
 Quant Method : Z:\pestpcbsrv\HPCHEM1\ECD_R\Method\PR070119.M
 Quant Title : GC EXTRACTABLES
 QLast Update : Mon Jul 01 17:21:12 2019
 Response via : Initial Calibration
 Integrator: ChemStation

Volume Inj. : 2 µl
 Signal #1 Phase : ZB-MR1 Signal #2 Phase: ZB-MR2
 Signal #1 Info : 30Mx0.32mmx 0.50µ Signal #2 Info : 30M x 0.32mm x 0.25µm

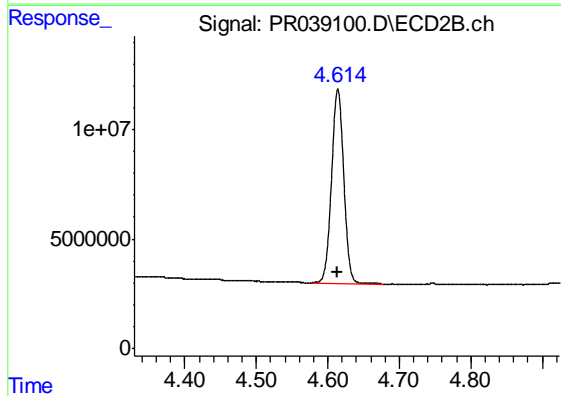




#1 Tetrachloro-m-xylene

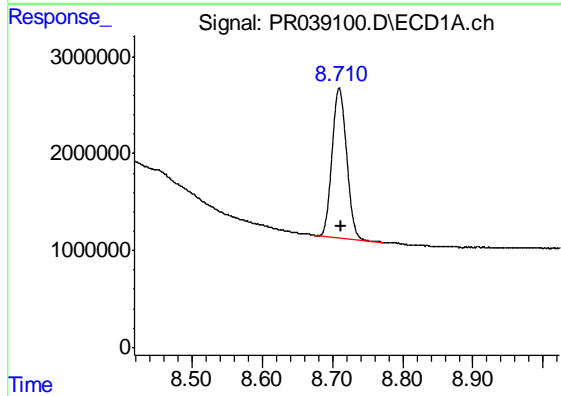
R.T.: 3.769 min
 Delta R.T.: 0.004 min
 Response: 34005493
 Conc: 19.85 ng/ml

Instrument :
 ECD_R
 ClientSampleId :
 PL-01-070319-B



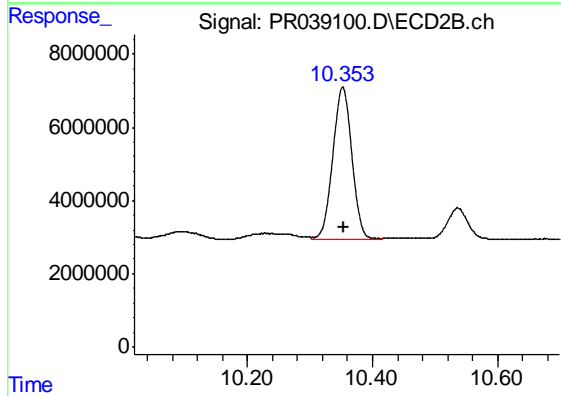
#1 Tetrachloro-m-xylene

R.T.: 4.614 min
 Delta R.T.: 0.002 min
 Response: 105219236
 Conc: 16.51 ng/ml



#2 Decachlorobiphenyl

R.T.: 8.710 min
 Delta R.T.: -0.002 min
 Response: 22203308
 Conc: 9.60 ng/ml



#2 Decachlorobiphenyl

R.T.: 10.352 min
 Delta R.T.: -0.003 min
 Response: 87482563
 Conc: 11.33 ng/ml