

Data Path : Z:\pestpcbsrv\HPCHEM1\ECD_R\Data\PR070819\
 Data File : PR039119.D
 Signal(s) : Signal #1: ECD1A.ch Signal #2: ECD2B.ch
 Acq On : 08 Jul 2019 19:41
 Operator : SM\AJ
 Sample : K3682-01MS
 Misc :
 ALS Vial : 26 Sample Multiplier: 1

Instrument :
 ECD_R
ClientSampleId :
 D-2-ROLL-OFF-2-STOCK-PILEMS

Manual Integrations
APPROVED
 Ankita
 7/9/2019 2:17:53 PM

Integration File signal 1: autoint1.e
 Integration File signal 2: autoint2.e
 Quant Time: Jul 09 03:56:52 2019
 Quant Method : Z:\pestpcbsrv\HPCHEM1\ECD_R\Method\PR070119.M
 Quant Title : GC EXTRACTABLES
 QLast Update : Mon Jul 01 17:21:12 2019
 Response via : Initial Calibration
 Integrator: ChemStation

Volume Inj. : 2 µl
 Signal #1 Phase : ZB-MR1 Signal #2 Phase: ZB-MR2
 Signal #1 Info : 30Mx0.32mmx 0.50µ Signal #2 Info : 30M x 0.32mm x 0.25µm

| Compound | RT#1 | RT#2 | Resp#1 | Resp#2 | ng/ml | ng/ml |
|-----------------------------|-------|--------|----------|----------|----------|---------|
| ----- | | | | | | |
| System Monitoring Compounds | | | | | | |
| 1) SA Tetrachlo... | 3.765 | 4.610 | 23760870 | 88633743 | 13.870 | 13.904 |
| 2) SA Decachlor... | 8.707 | 10.349 | 18867082 | 61960257 | 8.159 | 8.023 |
| Target Compounds | | | | | | |
| 3) L1 AR-1016-1 | 4.833 | 5.765 | 11222297 | 43003455 | 162.127 | 172.313 |
| 4) L1 AR-1016-2 | 4.851 | 5.788 | 18166955 | 61133811 | 163.029 | 170.075 |
| 5) L1 AR-1016-3 | 5.024 | 5.850 | 8337781 | 36457286 | 162.558 | 170.079 |
| 6) L1 AR-1016-4 | 5.065 | 5.948 | 6997758 | 30578443 | 166.609 | 176.804 |
| 7) L1 AR-1016-5 | 5.274 | 6.237 | 9040275 | 33823841 | 157.043 | 193.887 |
| 31) L7 AR-1260-1 | 6.289 | 7.348 | 19128980 | 56661982 | 162.860 | 173.065 |
| 32) L7 AR-1260-2 | 6.474 | 7.601 | 23106011 | 63410533 | 154.963 | 157.722 |
| 33) L7 AR-1260-3 | 6.625 | 7.956 | 21489588 | 40684632 | 158.277m | 130.443 |
| 34) L7 AR-1260-4 | 7.091 | 8.184 | 15857530 | 53490659 | 135.176 | 147.977 |
| 35) L7 AR-1260-5 | 7.329 | 8.510 | 37563018 | 96822723 | 126.758 | 126.807 |
| ----- | | | | | | |

(f)=RT Delta > 1/2 Window (#)=Amounts differ by > 25% (m)=manual int.

Data Path : Z:\pestpcbsrv\HPCHEM1\ECD_R\Data\PR070819\
 Data File : PR039119.D
 Signal(s) : Signal #1: ECD1A.ch Signal #2: ECD2B.ch
 Acq On : 08 Jul 2019 19:41
 Operator : SM\AJ
 Sample : K3682-01MS
 Misc :
 ALS Vial : 26 Sample Multiplier: 1

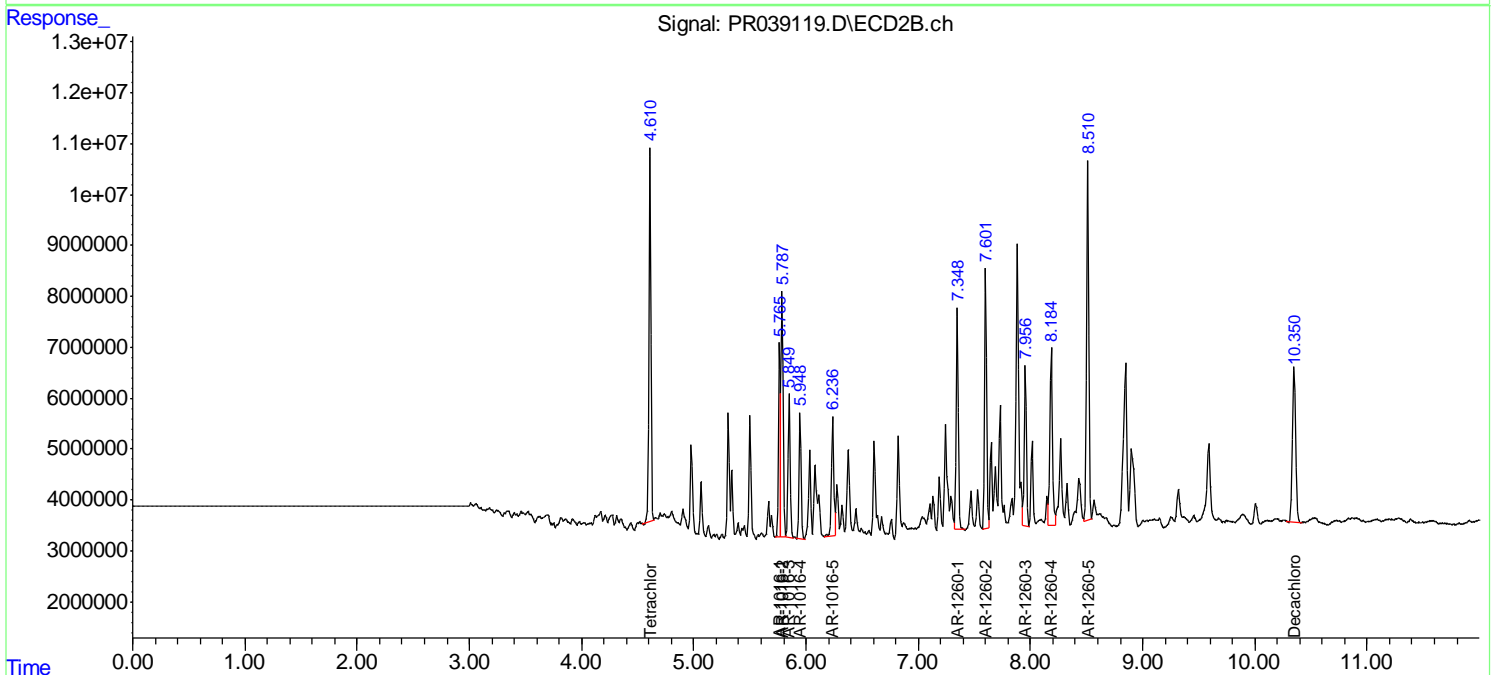
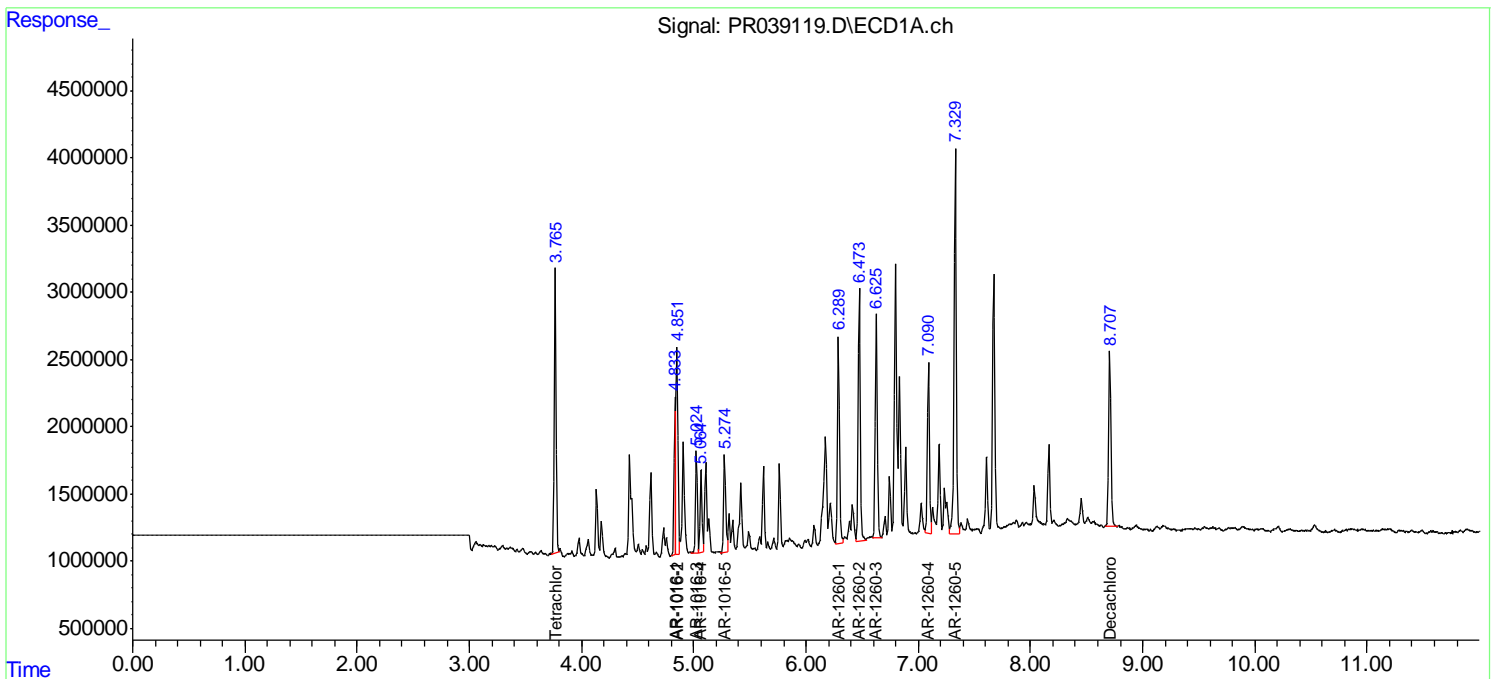
Instrument :
 ECD_R
Client Sampled :
 D-2-ROLL-OFF-2-STOCK-PILEMS

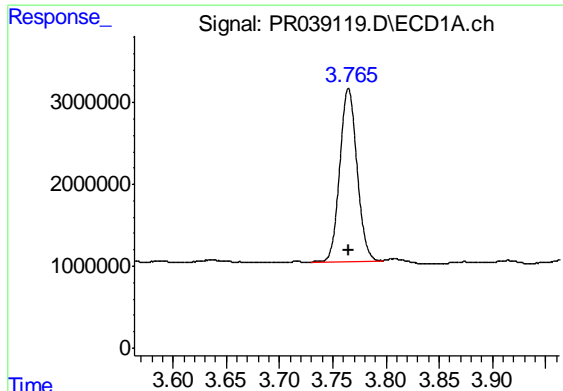
Manual Integrations
APPROVED

Ankita
 7/9/2019 2:17:53 PM

Integration File signal 1: autoint1.e
 Integration File signal 2: autoint2.e
 Quant Time: Jul 09 03:56:52 2019
 Quant Method : Z:\pestpcbsrv\HPCHEM1\ECD_R\Method\PR070119.M
 Quant Title : GC EXTRACTABLES
 QLast Update : Mon Jul 01 17:21:12 2019
 Response via : Initial Calibration
 Integrator: ChemStation

Volume Inj. : 2 µl
 Signal #1 Phase : ZB-MR1 Signal #2 Phase: ZB-MR2
 Signal #1 Info : 30Mx0.32mmx 0.50µ Signal #2 Info : 30M x 0.32mm x 0.25µm





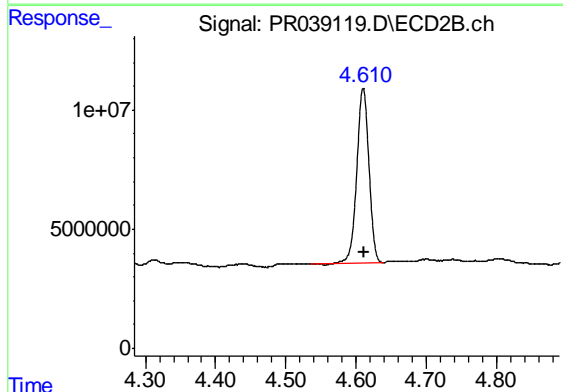
#1 Tetrachloro-m-xylene

R.T.: 3.765 min
 Delta R.T.: 0.000 min
 Response: 23760870
 Conc: 13.87 ng/ml

Instrument :
 ECD_R
 ClientSampleId :
 D-2-ROLL-OFF-2-STOCK-PILEMS

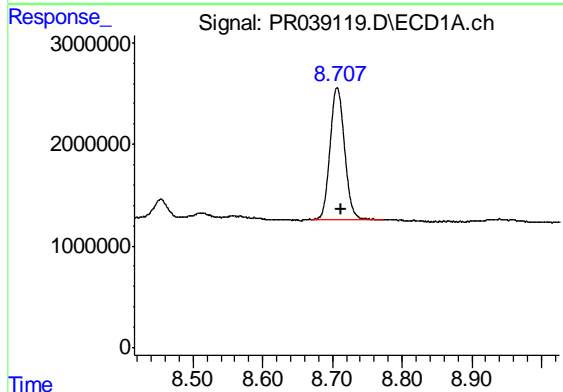
Manual Integrations
 APPROVED

Ankita
 7/9/2019 2:17:53 PM



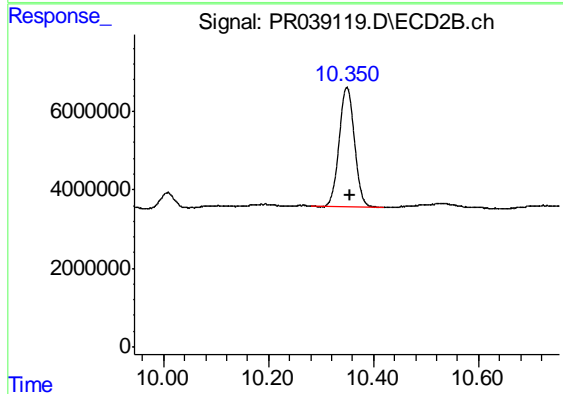
#1 Tetrachloro-m-xylene

R.T.: 4.610 min
 Delta R.T.: -0.002 min
 Response: 88633743
 Conc: 13.90 ng/ml



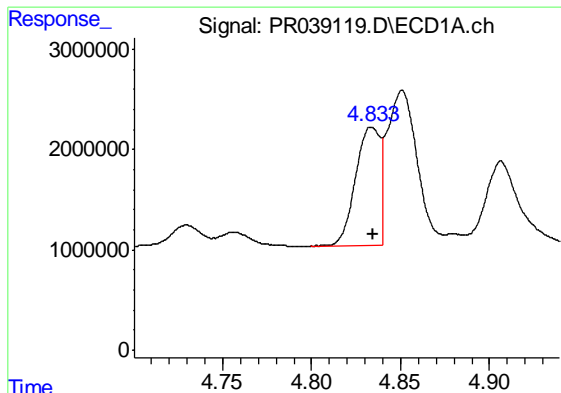
#2 Decachlorobiphenyl

R.T.: 8.707 min
 Delta R.T.: -0.005 min
 Response: 18867082
 Conc: 8.16 ng/ml



#2 Decachlorobiphenyl

R.T.: 10.349 min
 Delta R.T.: -0.006 min
 Response: 61960257
 Conc: 8.02 ng/ml

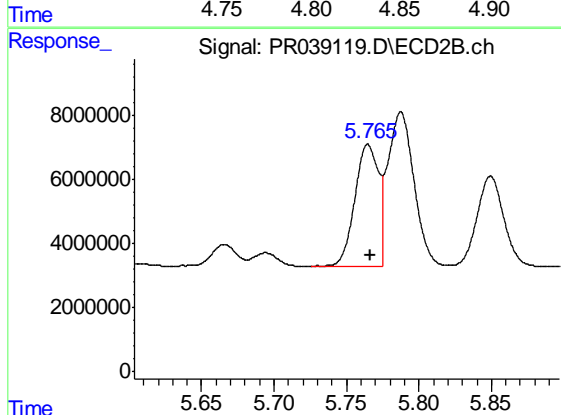


#3 AR-1016-1

R.T.: 4.833 min
 Delta R.T.: 0.000 min
 Response: 11222297
 Conc: 162.13 ng/ml

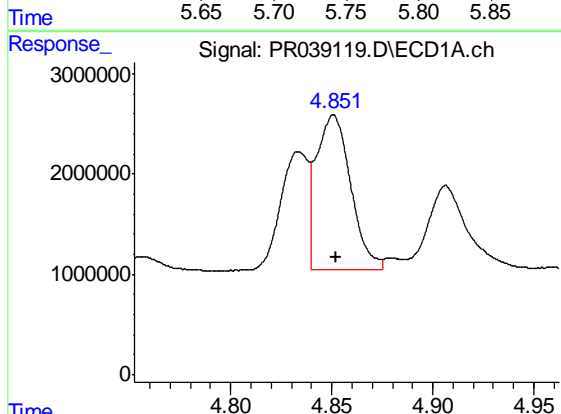
Instrument :
 ECD_R
ClientSampled :
 D-2-ROLL-OFF-2-STOCK-PILEMS

Manual Integrations
APPROVED
 Ankita
 7/9/2019 2:17:53 PM



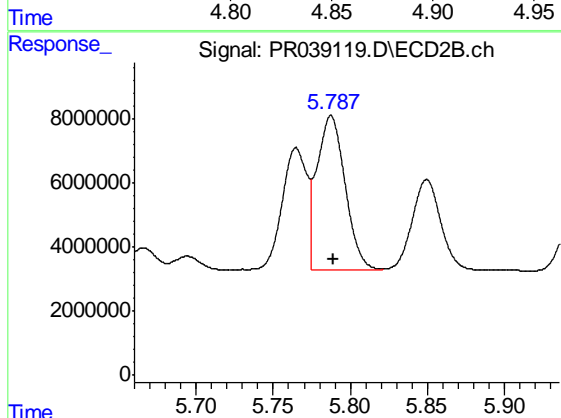
#3 AR-1016-1

R.T.: 5.765 min
 Delta R.T.: -0.002 min
 Response: 43003455
 Conc: 172.31 ng/ml



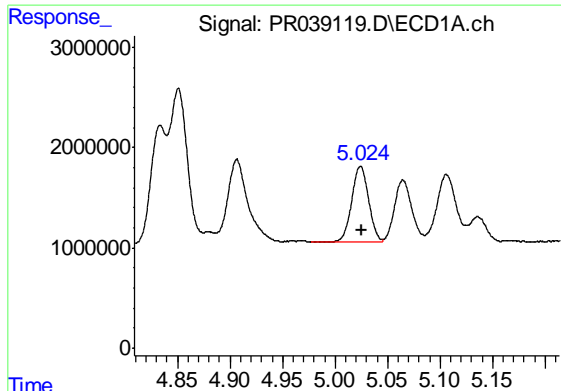
#4 AR-1016-2

R.T.: 4.851 min
 Delta R.T.: 0.000 min
 Response: 18166955
 Conc: 163.03 ng/ml



#4 AR-1016-2

R.T.: 5.788 min
 Delta R.T.: -0.002 min
 Response: 61133811
 Conc: 170.07 ng/ml



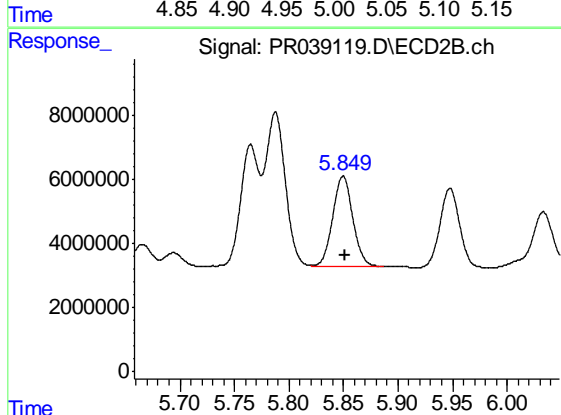
#5 AR-1016-3

R.T.: 5.024 min
 Delta R.T.: -0.001 min
 Response: 8337781
 Conc: 162.56 ng/ml

Instrument :
 ECD_R
ClientSampled :
 D-2-ROLL-OFF-2-STOCK-PILEMS

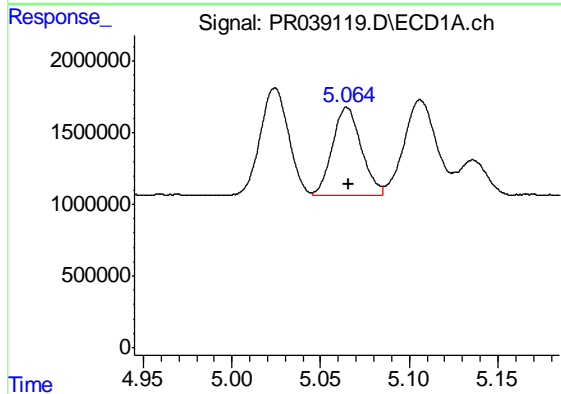
Manual Integrations
APPROVED

Ankita
 7/9/2019 2:17:53 PM



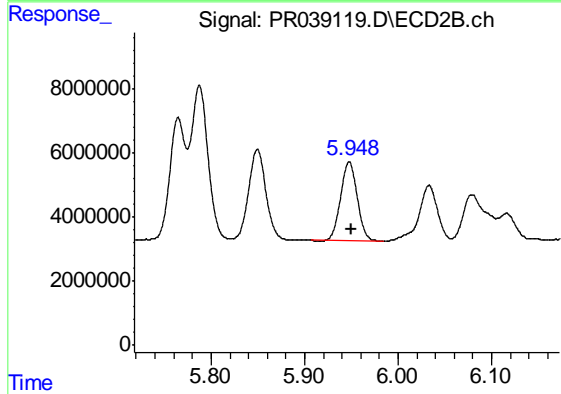
#5 AR-1016-3

R.T.: 5.850 min
 Delta R.T.: -0.002 min
 Response: 36457286
 Conc: 170.08 ng/ml



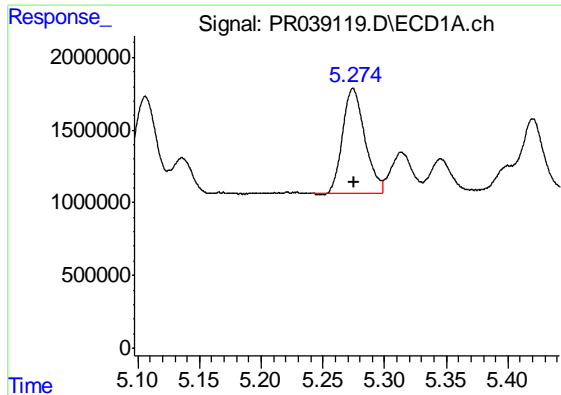
#6 AR-1016-4

R.T.: 5.065 min
 Delta R.T.: -0.001 min
 Response: 6997758
 Conc: 166.61 ng/ml



#6 AR-1016-4

R.T.: 5.948 min
 Delta R.T.: -0.002 min
 Response: 30578443
 Conc: 176.80 ng/ml



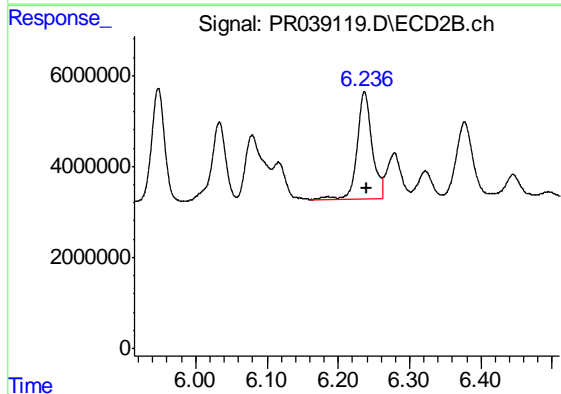
#7 AR-1016-5

R.T.: 5.274 min
 Delta R.T.: -0.001 min
 Response: 9040275
 Conc: 157.04 ng/ml

Instrument :
 ECD_R
 ClientSampleId :
 D-2-ROLL-OFF-2-STOCK-PILEMS

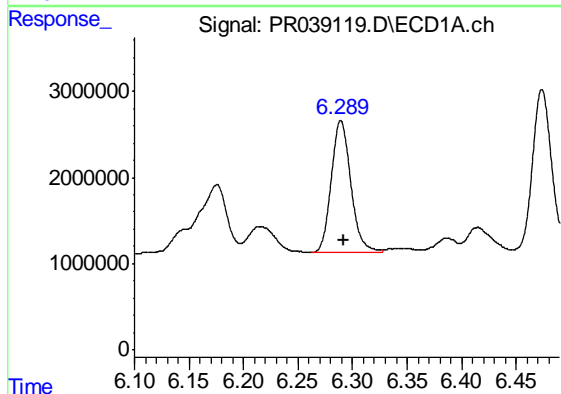
Manual Integrations
 APPROVED

Ankita
 7/9/2019 2:17:53 PM



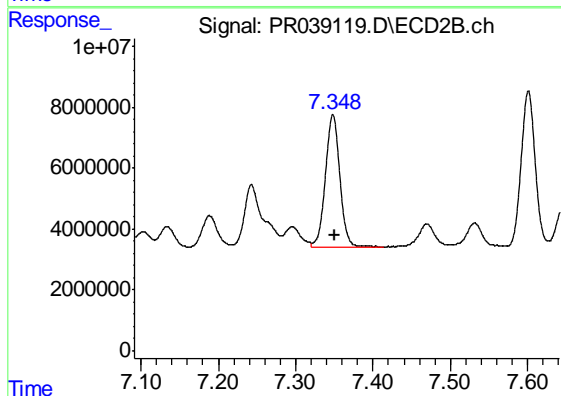
#7 AR-1016-5

R.T.: 6.237 min
 Delta R.T.: -0.002 min
 Response: 33823841
 Conc: 193.89 ng/ml



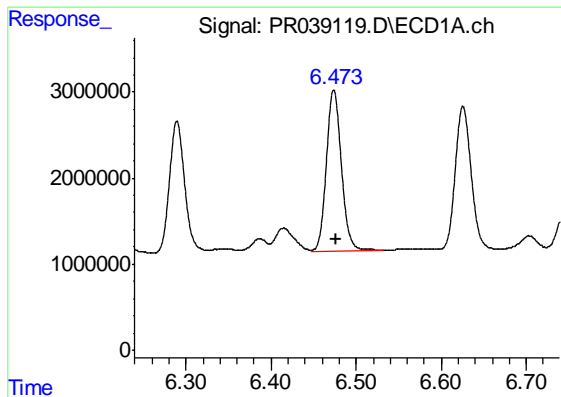
#31 AR-1260-1

R.T.: 6.289 min
 Delta R.T.: -0.002 min
 Response: 19128980
 Conc: 162.86 ng/ml



#31 AR-1260-1

R.T.: 7.348 min
 Delta R.T.: -0.002 min
 Response: 56661982
 Conc: 173.07 ng/ml



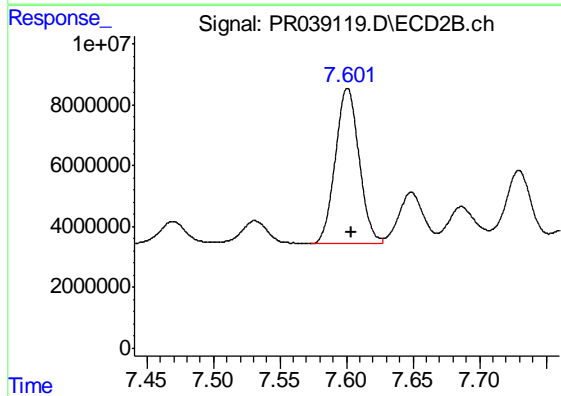
#32 AR-1260-2

R.T.: 6.474 min
 Delta R.T.: -0.002 min
 Response: 23106011
 Conc: 154.96 ng/ml

Instrument :
 ECD_R
 ClientSampleId :
 D-2-ROLL-OFF-2-STOCK-PILEMS

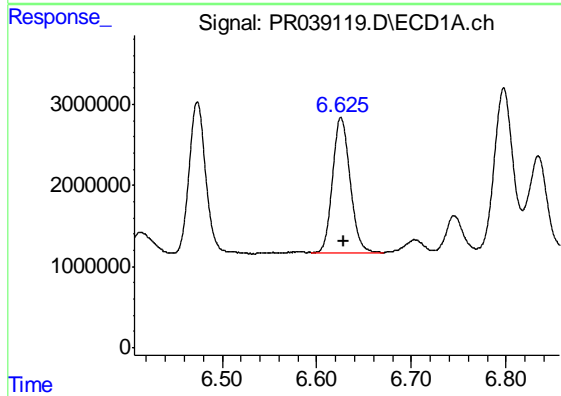
Manual Integrations
 APPROVED

Ankita
 7/9/2019 2:17:53 PM



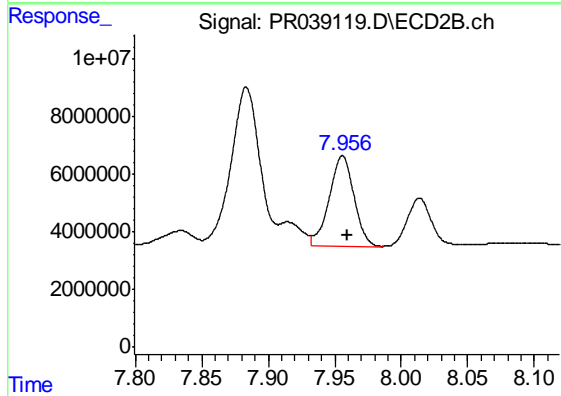
#32 AR-1260-2

R.T.: 7.601 min
 Delta R.T.: -0.003 min
 Response: 63410533
 Conc: 157.72 ng/ml



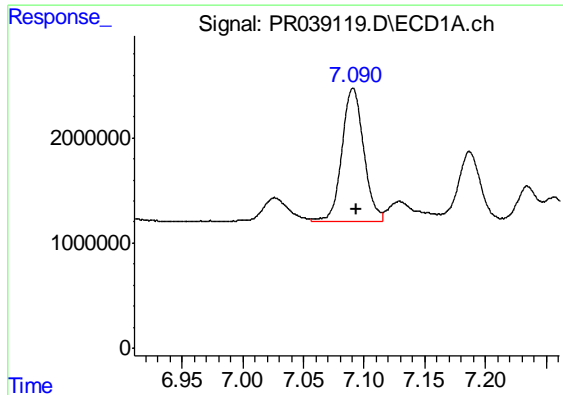
#33 AR-1260-3

R.T.: 6.625 min
 Delta R.T.: -0.003 min
 Response: 21489588
 Conc: 158.28 ng/ml m



#33 AR-1260-3

R.T.: 7.956 min
 Delta R.T.: -0.003 min
 Response: 40684632
 Conc: 130.44 ng/ml

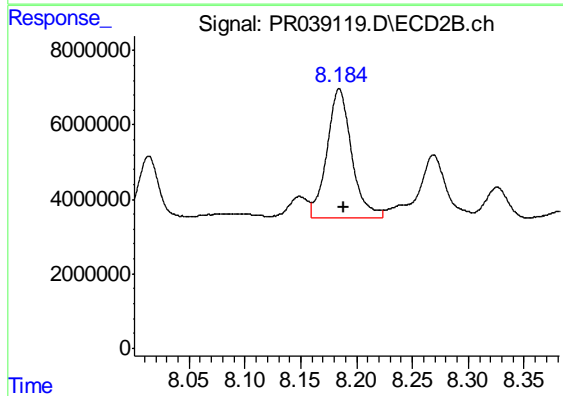


#34 AR-1260-4

R.T.: 7.091 min
 Delta R.T.: -0.003 min
 Response: 15857530
 Conc: 135.18 ng/ml

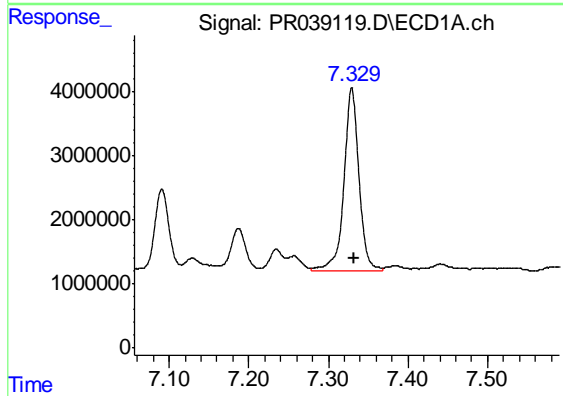
Instrument :
 ECD_R
ClientSampleId :
 D-2-ROLL-OFF-2-STOCK-PILEMS

Manual Integrations
APPROVED
 Ankita
 7/9/2019 2:17:53 PM



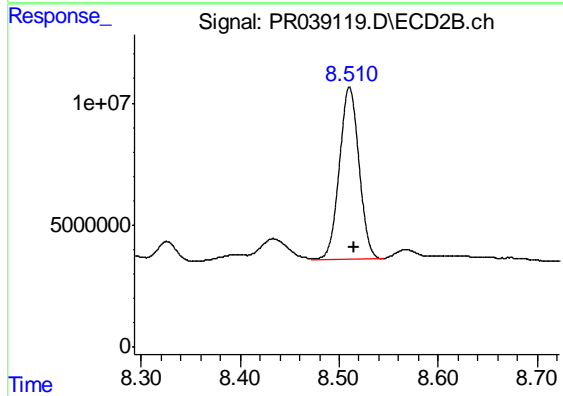
#34 AR-1260-4

R.T.: 8.184 min
 Delta R.T.: -0.005 min
 Response: 53490659
 Conc: 147.98 ng/ml



#35 AR-1260-5

R.T.: 7.329 min
 Delta R.T.: -0.003 min
 Response: 37563018
 Conc: 126.76 ng/ml



#35 AR-1260-5

R.T.: 8.510 min
 Delta R.T.: -0.004 min
 Response: 96822723
 Conc: 126.81 ng/ml