

Data Path : Z:\pestpcbsrv\HPCHEM1\ECD_R\Data\PR070819\
 Data File : PR039124.D
 Signal(s) : Signal #1: ECD1A.ch Signal #2: ECD2B.ch
 Acq On : 08 Jul 2019 21:22
 Operator : SM\AJ
 Sample : I.BLK
 Misc :
 ALS Vial : 2 Sample Multiplier: 1

Instrument :
 ECD_R
 ClientSampleId :
 I.BLK

Integration File signal 1: autoint1.e
 Integration File signal 2: autoint2.e
 Quant Time: Jul 09 04:49:38 2019
 Quant Method : Z:\pestpcbsrv\HPCHEM1\ECD_R\Method\PR070119.M
 Quant Title : GC EXTRACTABLES
 QLast Update : Mon Jul 01 17:21:12 2019
 Response via : Initial Calibration
 Integrator: ChemStation

Volume Inj. : 2 µl
 Signal #1 Phase : ZB-MR1 Signal #2 Phase: ZB-MR2
 Signal #1 Info : 30Mx0.32mmx 0.50µ Signal #2 Info : 30M x 0.32mm x 0.25µm

Compound	RT#1	RT#2	Resp#1	Resp#2	ng/ml	ng/ml
----------	------	------	--------	--------	-------	-------

 System Monitoring Compounds

1) SA Tetrachlo...	3.767	4.612	25072274	79057378	14.636	12.401
2) SA Decachlor...	8.708	10.349	26383022	97835593	11.409	12.668

Target Compounds

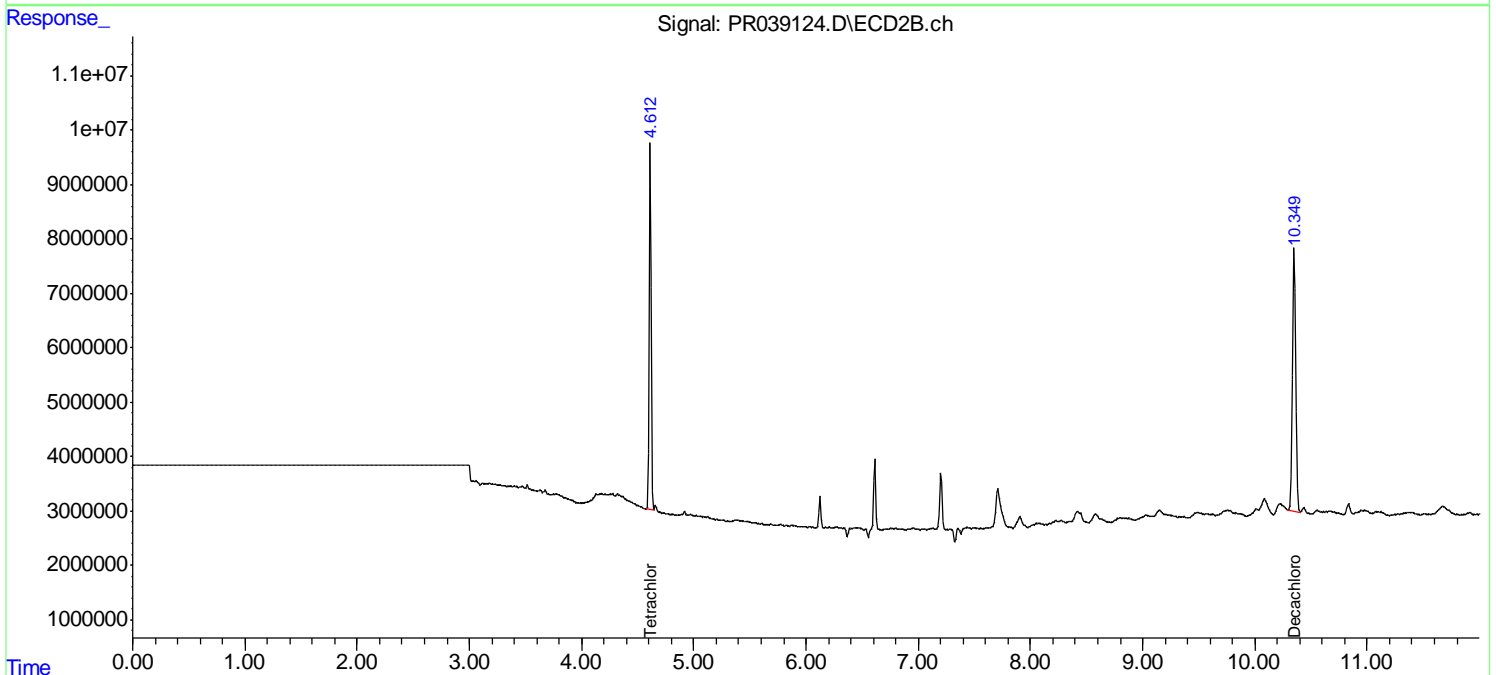
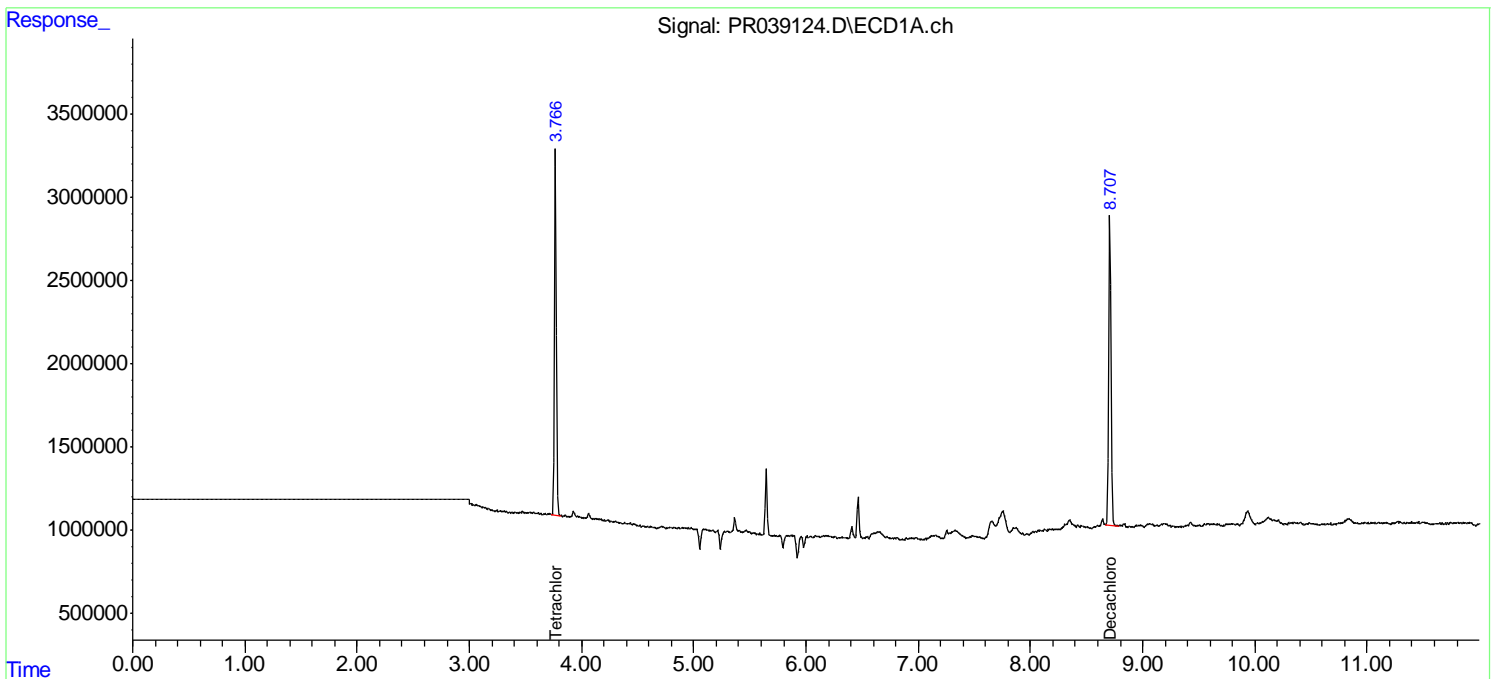
(f)=RT Delta > 1/2 Window (#)=Amounts differ by > 25% (m)=manual int.

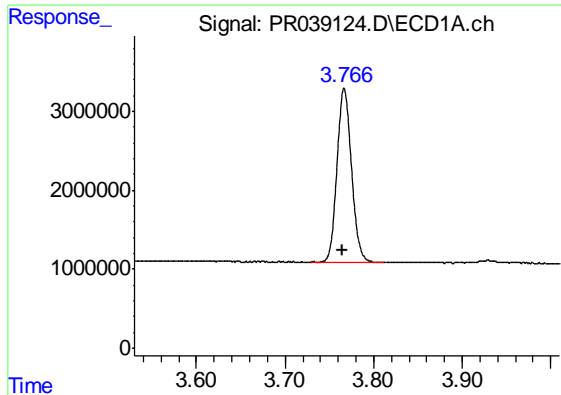
Data Path : Z:\pestpcbsrv\HPCHEM1\ECD_R\Data\PR070819\
 Data File : PR039124.D
 Signal(s) : Signal #1: ECD1A.ch Signal #2: ECD2B.ch
 Acq On : 08 Jul 2019 21:22
 Operator : SM\AJ
 Sample : I.BLK
 Misc :
 ALS Vial : 2 Sample Multiplier: 1

Instrument :
 ECD_R
 ClientSampled :
 I.BLK

Integration File signal 1: autoint1.e
 Integration File signal 2: autoint2.e
 Quant Time: Jul 09 04:49:38 2019
 Quant Method : Z:\pestpcbsrv\HPCHEM1\ECD_R\Method\PR070119.M
 Quant Title : GC EXTRACTABLES
 QLast Update : Mon Jul 01 17:21:12 2019
 Response via : Initial Calibration
 Integrator: ChemStation

Volume Inj. : 2 µl
 Signal #1 Phase : ZB-MR1 Signal #2 Phase: ZB-MR2
 Signal #1 Info : 30Mx0.32mmx 0.50µ Signal #2 Info : 30M x 0.32mm x 0.25µm

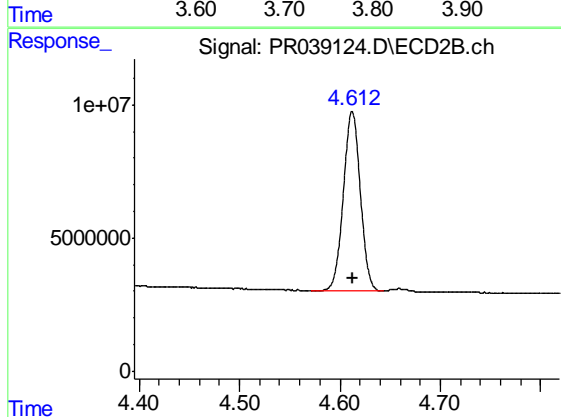




#1 Tetrachloro-m-xylene

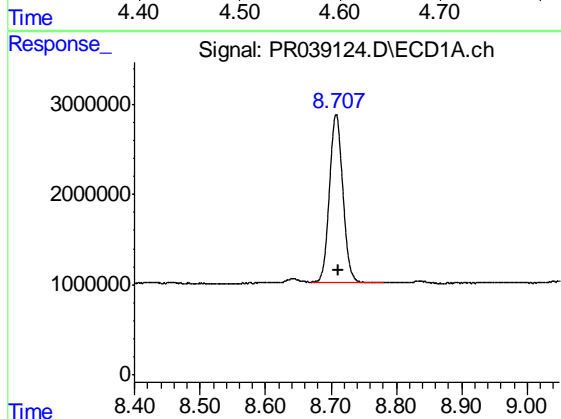
R.T.: 3.767 min
Delta R.T.: 0.002 min
Response: 25072274
Conc: 14.64 ng/ml

Instrument :
ECD_R
ClientSampleId :
I.BLK



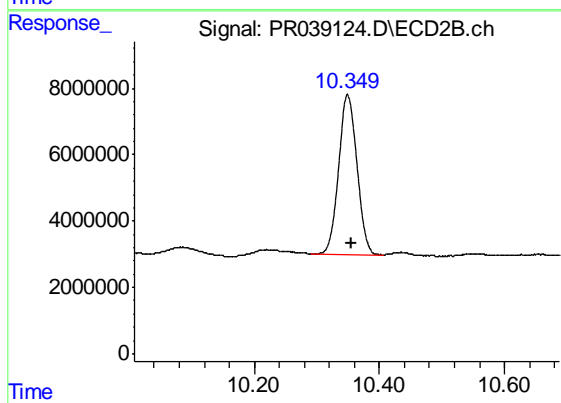
#1 Tetrachloro-m-xylene

R.T.: 4.612 min
Delta R.T.: 0.000 min
Response: 79057378
Conc: 12.40 ng/ml



#2 Decachlorobiphenyl

R.T.: 8.708 min
Delta R.T.: -0.004 min
Response: 26383022
Conc: 11.41 ng/ml



#2 Decachlorobiphenyl

R.T.: 10.349 min
Delta R.T.: -0.006 min
Response: 97835593
Conc: 12.67 ng/ml