

Data Path : Z:\pestpcbsrv\HPCHEM1\ECD_R\Data\PR072719\
 Data File : PR039788.D
 Signal(s) : Signal #1: ECD1A.ch Signal #2: ECD2B.ch
 Acq On : 27 Jul 2019 17:35
 Operator : SM\AJ
 Sample : K3626-15
 Misc :
 ALS Vial : 17 Sample Multiplier: 1

Instrument :
 ECD_R
 ClientSampled :

Integration File signal 1: autoint1.e
 Integration File signal 2: autoint2.e
 Quant Time: Jul 29 01:23:54 2019
 Quant Method : Z:\pestpcbsrv\HPCHEM1\ECD_R\Method\PR072219.M
 Quant Title : GC EXTRACTABLES
 QLast Update : Mon Jul 22 14:03:19 2019
 Response via : Initial Calibration
 Integrator: ChemStation

Volume Inj. : 2 µl
 Signal #1 Phase : ZB-MR1 Signal #2 Phase: ZB-MR2
 Signal #1 Info : 30Mx0.32mmx 0.50µ Signal #2 Info : 30M x 0.32mm x 0.25µm

Compound	RT#1	RT#2	Resp#1	Resp#2	ng/ml	ng/ml
----------	------	------	--------	--------	-------	-------

System Monitoring Compounds

1) SA Tetrachlo...	3.757	4.602	37706787	132.2E6	15.711	13.185
2) SA Decachlor...	8.690	10.331	19191861	76089448	7.724	8.105

Target Compounds

3) L1 AR-1016-1	4.817	0.000	1316915	0	14.979	N.D. #
4) L1 AR-1016-2	4.843	0.000	2413459	0	16.662	N.D. #
5) L1 AR-1016-3	5.006	0.000	2670552	0	38.448	N.D. #
6) L1 AR-1016-4	5.061	0.000	4044092	0	71.842	N.D. #
7) L1 AR-1016-5	5.211	0.000	319853	0	4.265	N.D. #
9) L2 AR-1221-2	4.055	0.000	557264	0	22.904	N.D. #
10) L2 AR-1221-3	4.055	0.000	557264	0	7.115	N.D. #
11) L3 AR-1232-1	4.055	0.000	557264	0	7.131	N.D. #
12) L3 AR-1232-2	4.843	0.000	2413459	0	25.676	N.D. #
13) L3 AR-1232-3	5.006	0.000	2670552	0	63.175	N.D. #
14) L3 AR-1232-4	5.095	0.000	1277388	0	32.094	N.D. #
15) L3 AR-1232-5	5.211	0.000	319853	0	7.558	N.D. #
16) L4 AR-1242-1	4.817	0.000	1316915	0	14.425	N.D. #
17) L4 AR-1242-2	4.843	0.000	2413459	0	16.839	N.D. #
18) L4 AR-1242-3	5.006	0.000	2670552	0	37.786	N.D. #
19) L4 AR-1242-4	5.095	0.000	1277388	0	18.262	N.D. #
20) L4 AR-1242-5	5.611	0.000	322048	0	3.242	N.D. #
21) L5 AR-1248-1	4.817	0.000	1316915	0	18.198	N.D. #
22) L5 AR-1248-2	5.061	0.000	4044092	0	51.692	N.D. #
23) L5 AR-1248-3	5.095	0.000	1277388	0	11.962	N.D. #
24) L5 AR-1248-4	5.211	0.000	319853	0	2.416	N.D. #
25) L5 AR-1248-5	5.611	0.000	322048	0	2.222	N.D. #
26) L6 AR-1254-1	5.611	0.000	322048	0	2.088	N.D. #
27) L6 AR-1254-2	5.815	0.000	2857667	0	21.825	N.D. #
28) L6 AR-1254-3	6.164	0.000	1608407	0	7.199	N.D. #
30) L6 AR-1254-5	6.786	0.000	1240042	0	6.512	N.D. #
31) L7 AR-1260-1	6.278	0.000	1453724	0	9.975	N.D. #
32) L7 AR-1260-2	6.460	0.000	1930310	0	10.484	N.D. #
33) L7 AR-1260-3	6.615	0.000	1284564	0	7.754	N.D. #
34) L7 AR-1260-4	7.078	0.000	1325481	0	9.535	N.D. #
35) L7 AR-1260-5	7.317	8.543	2397328	88556345	6.949	86.339 #
36) L8 AR-1262-1	6.883	0.000	3902373	0	26.578	N.D. #
37) L8 AR-1262-2	7.317	8.543	2397328	88556345	3.547	43.961 #
38) L8 AR-1262-3	7.596	0.000	692969	0	2.917	N.D. #
39) L8 AR-1262-4	7.660	0.000	3679597	0	7.946	N.D. #
40) L8 AR-1262-5	8.153	0.000	580203	0	2.984	N.D. #
41) L9 AR-1268-1	7.596	0.000	692969	0	0.904	N.D. #
42) L9 AR-1268-2	7.660	0.000	3679597	0	5.241	N.D. #
44) L9 AR-1268-4	8.153	0.000	580203	0	2.518	N.D. #

Data Path : Z:\pestpcbsrv\HPCHEM1\ECD_R\Data\PR072719\
 Data File : PR039788.D
 Signal(s) : Signal #1: ECD1A.ch Signal #2: ECD2B.ch
 Acq On : 27 Jul 2019 17:35
 Operator : SM\AJ
 Sample : K3626-15
 Misc :
 ALS Vial : 17 Sample Multiplier: 1

Instrument :
 ECD_R
 ClientSampleId :

Integration File signal 1: autoint1.e
 Integration File signal 2: autoint2.e
 Quant Time: Jul 29 01:23:54 2019
 Quant Method : Z:\pestpcbsrv\HPCHEM1\ECD_R\Method\PR072219.M
 Quant Title : GC EXTRACTABLES
 QLast Update : Mon Jul 22 14:03:19 2019
 Response via : Initial Calibration
 Integrator: ChemStation

Volume Inj. : 2 µl
 Signal #1 Phase : ZB-MR1 Signal #2 Phase: ZB-MR2
 Signal #1 Info : 30Mx0.32mmx 0.50µ Signal #2 Info : 30M x 0.32mm x 0.25µm

Compound	RT#1	RT#2	Resp#1	Resp#2	ng/ml	ng/ml

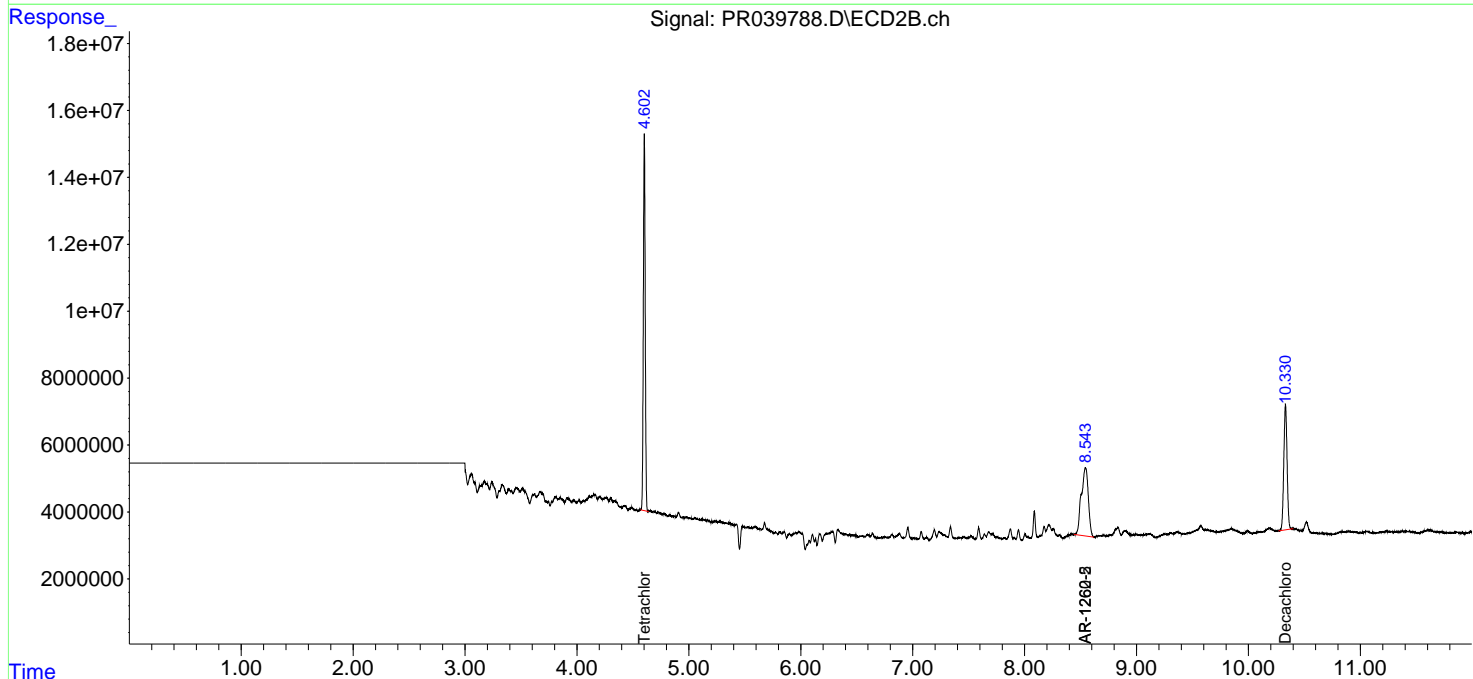
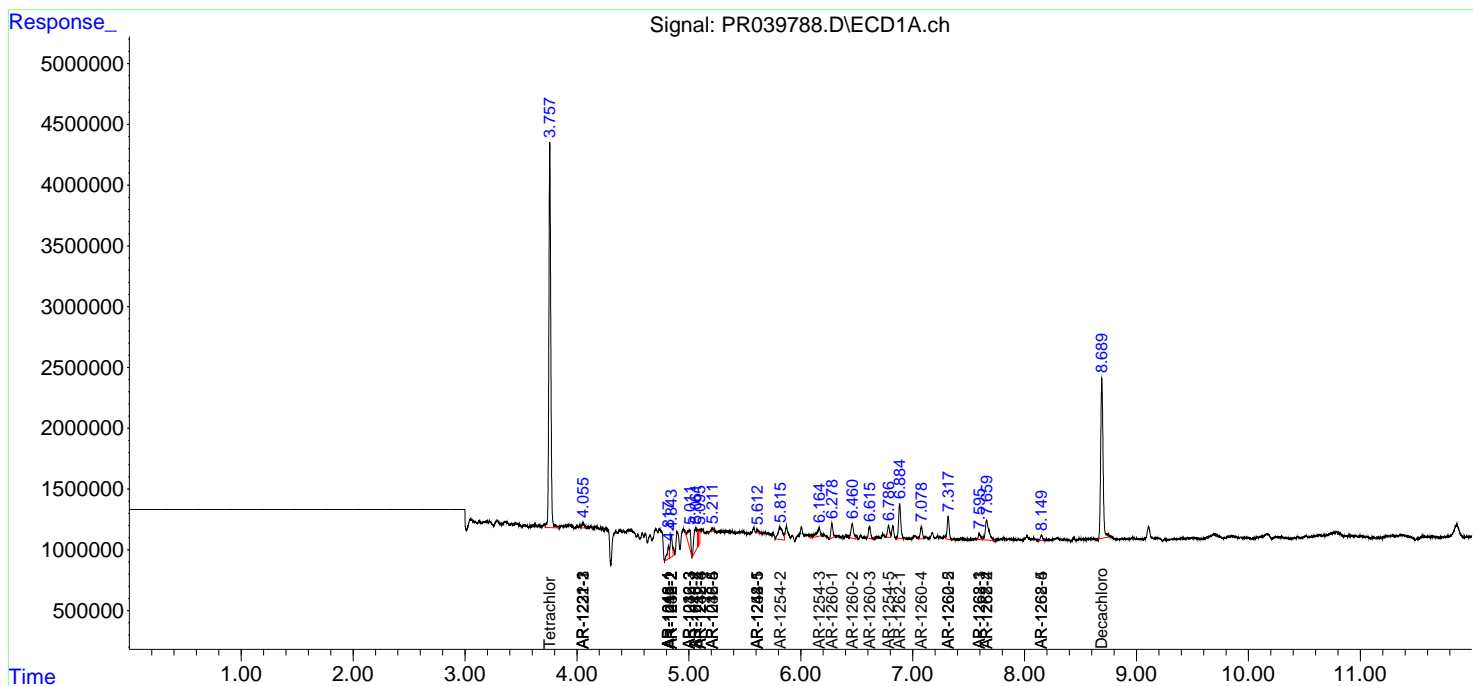
(f)=RT Delta > 1/2 Window (#)=Amounts differ by > 25% (m)=manual int.

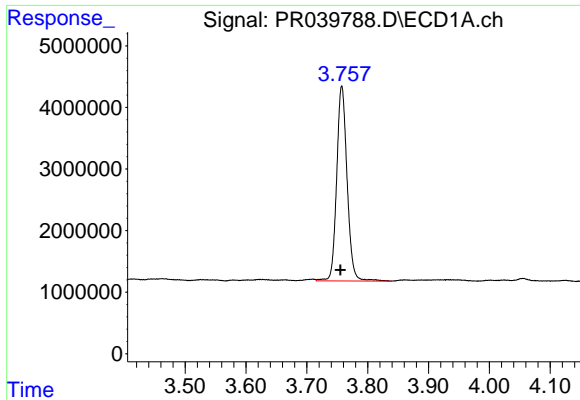
Data Path : Z:\pestpcbsrv\HPCHEM1\ECD_R\Data\PR072719\
 Data File : PR039788.D
 Signal(s) : Signal #1: ECD1A.ch Signal #2: ECD2B.ch
 Acq On : 27 Jul 2019 17:35
 Operator : SM\AJ
 Sample : K3626-15
 Misc :
 ALS Vial : 17 Sample Multiplier: 1

Instrument :
 ECD_R
 ClientSampled :

Integration File signal 1: autoint1.e
 Integration File signal 2: autoint2.e
 Quant Time: Jul 29 01:23:54 2019
 Quant Method : Z:\pestpcbsrv\HPCHEM1\ECD_R\Method\PR072219.M
 Quant Title : GC EXTRACTABLES
 QLast Update : Mon Jul 22 14:03:19 2019
 Response via : Initial Calibration
 Integrator: ChemStation

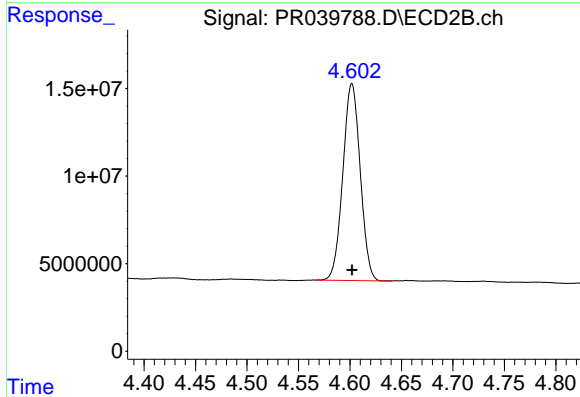
Volume Inj. : 2 µl
 Signal #1 Phase : ZB-MR1 Signal #2 Phase: ZB-MR2
 Signal #1 Info : 30Mx0.32mmx 0.50µ Signal #2 Info : 30M x 0.32mm x 0.25µm



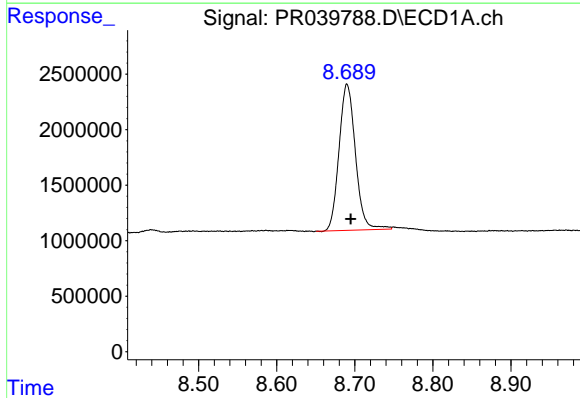


#1 Tetrachloro-m-xylene
 R.T.: 3.757 min
 Delta R.T.: 0.002 min
 Response: 37706787
 Conc: 15.71 ng/ml

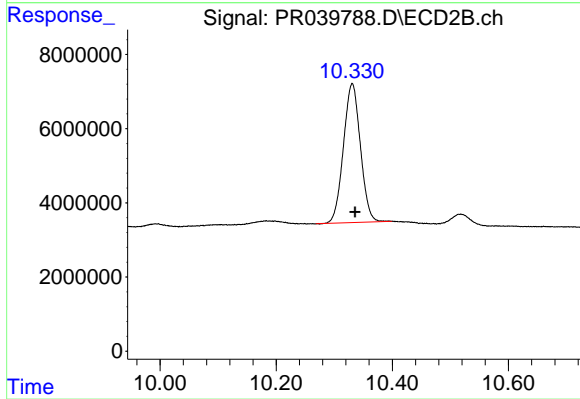
Instrument :
 ECD_R
 ClientSampleId :



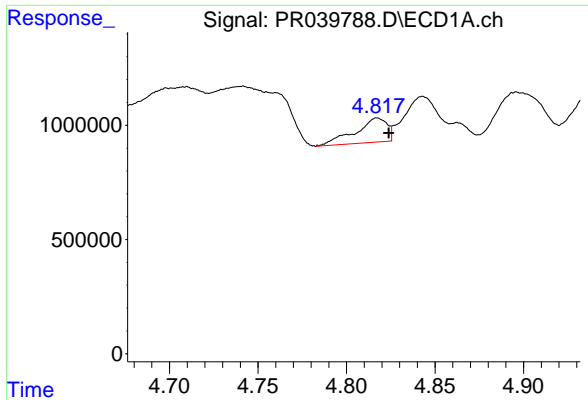
#1 Tetrachloro-m-xylene
 R.T.: 4.602 min
 Delta R.T.: 0.000 min
 Response: 132172490
 Conc: 13.19 ng/ml



#2 Decachlorobiphenyl
 R.T.: 8.690 min
 Delta R.T.: -0.005 min
 Response: 19191861
 Conc: 7.72 ng/ml



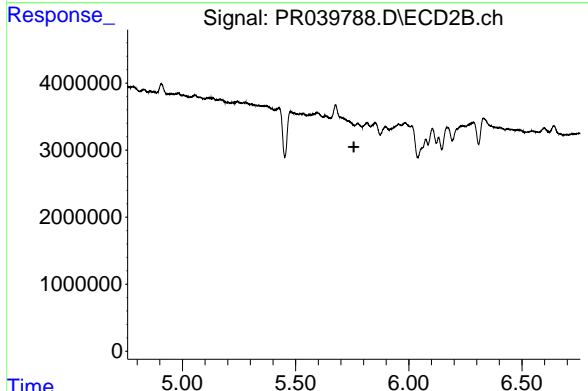
#2 Decachlorobiphenyl
 R.T.: 10.331 min
 Delta R.T.: -0.005 min
 Response: 76089448
 Conc: 8.11 ng/ml



#3 AR-1016-1

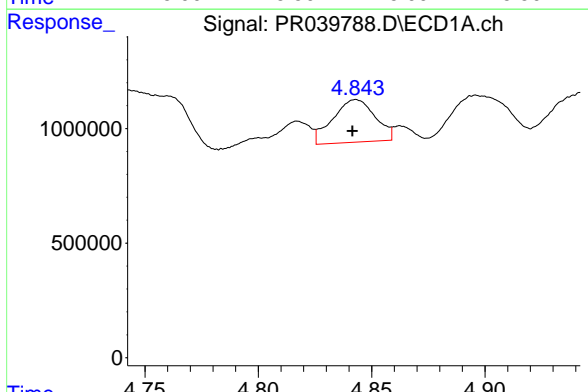
R.T.: 4.817 min
 Delta R.T.: -0.007 min
 Response: 1316915
 Conc: 14.98 ng/ml

Instrument :
 ECD_R
 ClientSampleId :



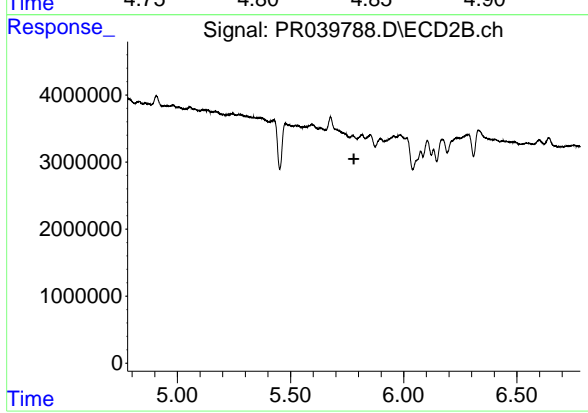
#3 AR-1016-1

R.T.: 0.000 min
 Exp R.T. : 5.757 min
 Response: 0
 Conc: N.D.



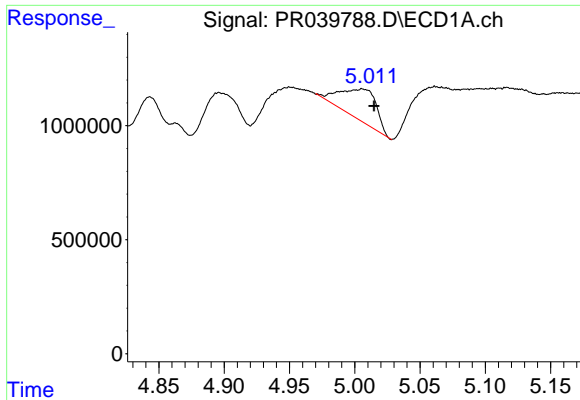
#4 AR-1016-2

R.T.: 4.843 min
 Delta R.T.: 0.002 min
 Response: 2413459
 Conc: 16.66 ng/ml



#4 AR-1016-2

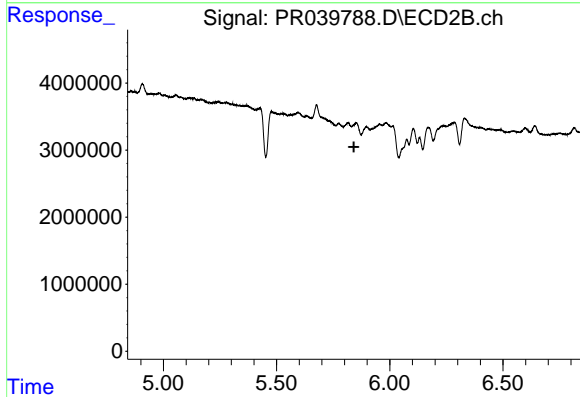
R.T.: 0.000 min
 Exp R.T. : 5.780 min
 Response: 0
 Conc: N.D.



#5 AR-1016-3

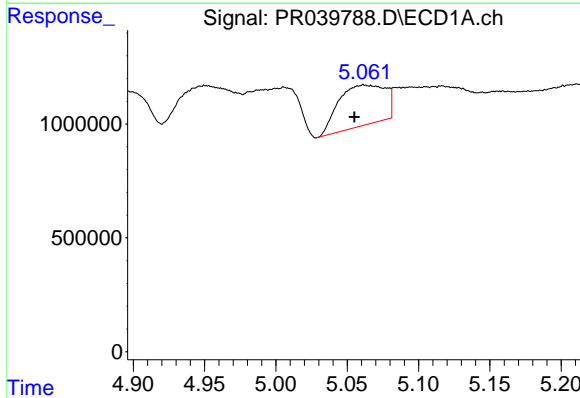
R.T.: 5.006 min
 Delta R.T.: -0.009 min
 Response: 2670552
 Conc: 38.45 ng/ml

Instrument :
 ECD_R
 ClientSampleId :



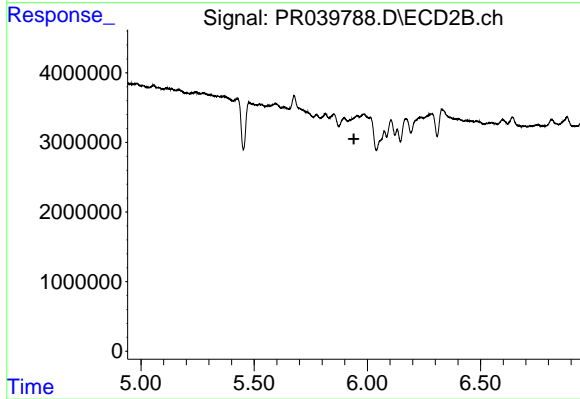
#5 AR-1016-3

R.T.: 0.000 min
 Exp R.T. : 5.842 min
 Response: 0
 Conc: N.D.



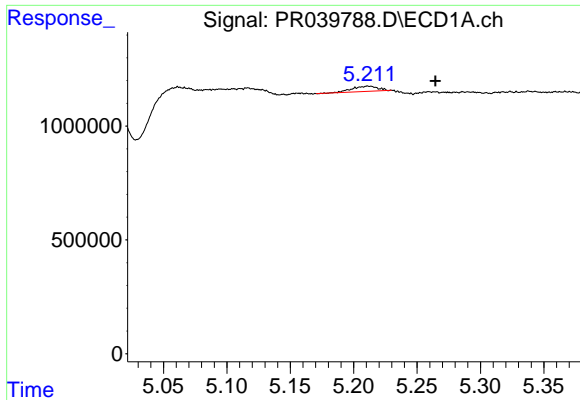
#6 AR-1016-4

R.T.: 5.061 min
 Delta R.T.: 0.006 min
 Response: 4044092
 Conc: 71.84 ng/ml



#6 AR-1016-4

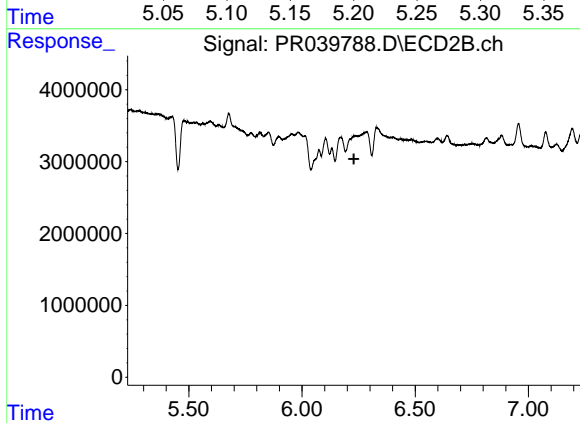
R.T.: 0.000 min
 Exp R.T. : 5.941 min
 Response: 0
 Conc: N.D.



#7 AR-1016-5

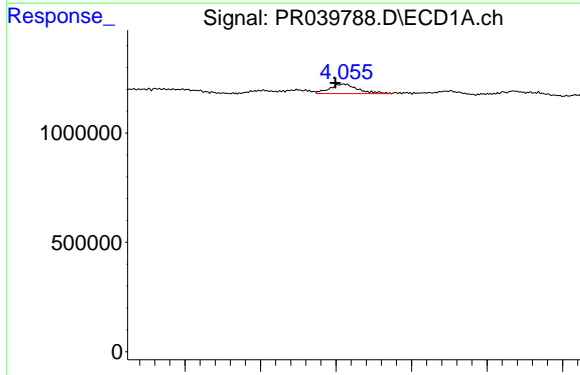
R.T.: 5.211 min
 Delta R.T.: -0.054 min
 Response: 319853
 Conc: 4.26 ng/ml

Instrument :
 ECD_R
 ClientSampleId :



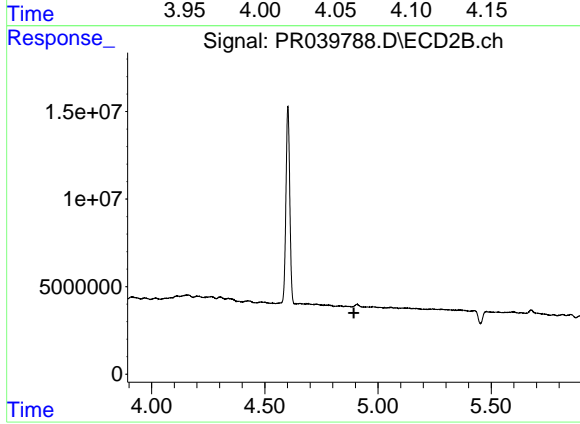
#7 AR-1016-5

R.T.: 0.000 min
 Exp R.T. : 6.229 min
 Response: 0
 Conc: N.D.



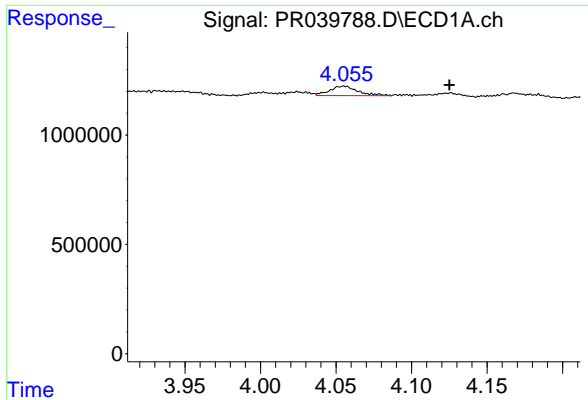
#9 AR-1221-2

R.T.: 4.055 min
 Delta R.T.: 0.006 min
 Response: 557264
 Conc: 22.90 ng/ml



#9 AR-1221-2

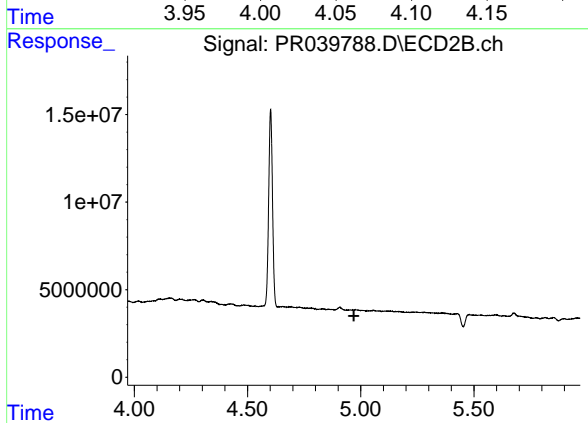
R.T.: 0.000 min
 Exp R.T. : 4.893 min
 Response: 0
 Conc: N.D.



#10 AR-1221-3

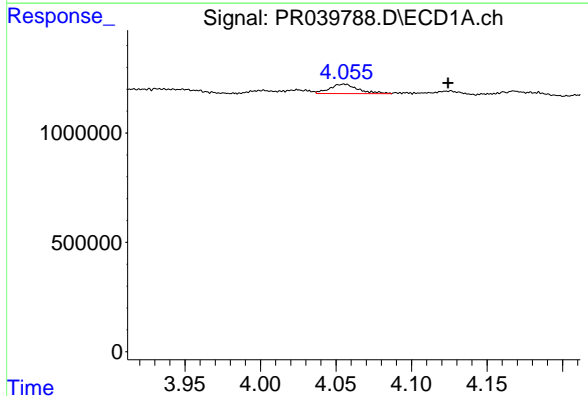
R.T.: 4.055 min
 Delta R.T.: -0.070 min
 Response: 557264
 Conc: 7.12 ng/ml

Instrument :
 ECD_R
 ClientSampled :



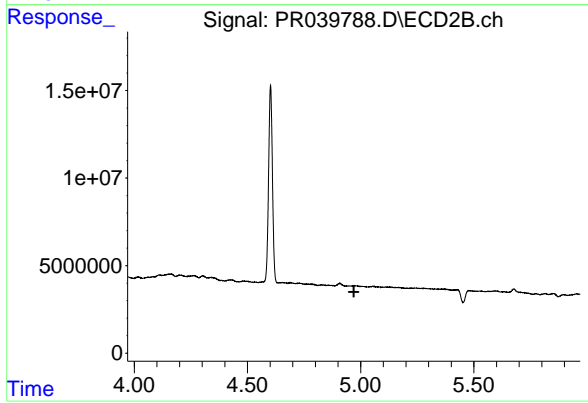
#10 AR-1221-3

R.T.: 0.000 min
 Exp R.T. : 4.970 min
 Response: 0
 Conc: N.D.



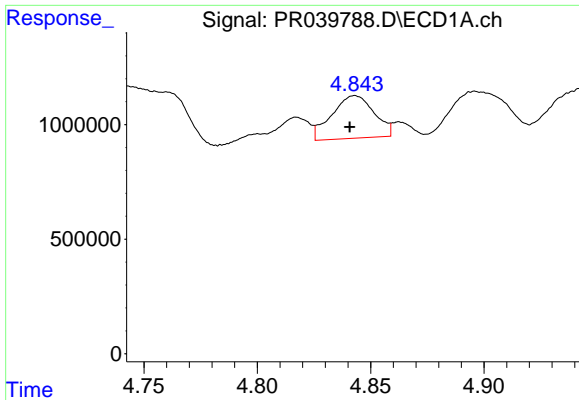
#11 AR-1232-1

R.T.: 4.055 min
 Delta R.T.: -0.069 min
 Response: 557264
 Conc: 7.13 ng/ml



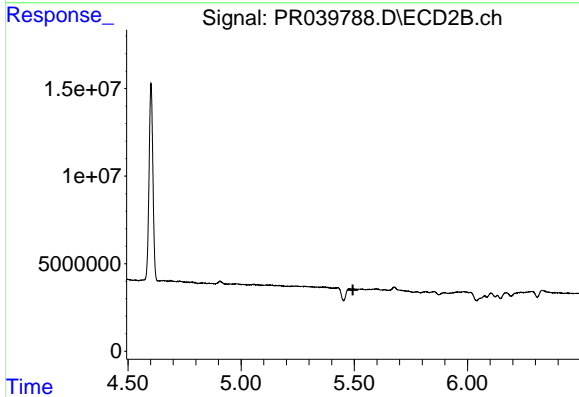
#11 AR-1232-1

R.T.: 0.000 min
 Exp R.T. : 4.970 min
 Response: 0
 Conc: N.D.

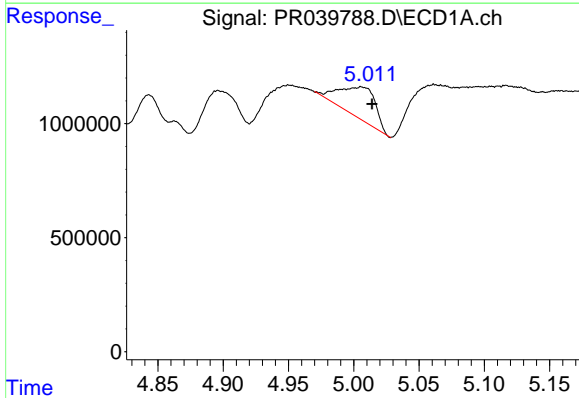


#12 AR-1232-2
 R.T.: 4.843 min
 Delta R.T.: 0.002 min
 Response: 2413459
 Conc: 25.68 ng/ml

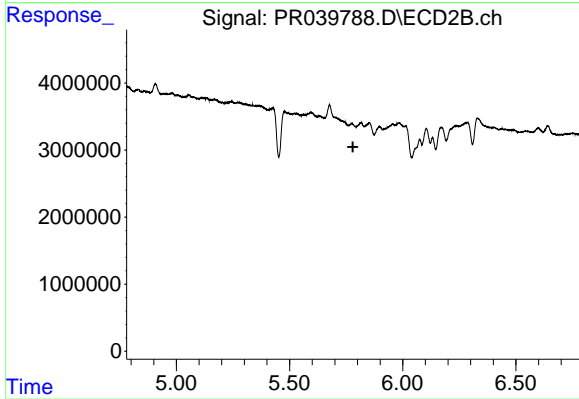
Instrument :
 ECD_R
 ClientSampled :



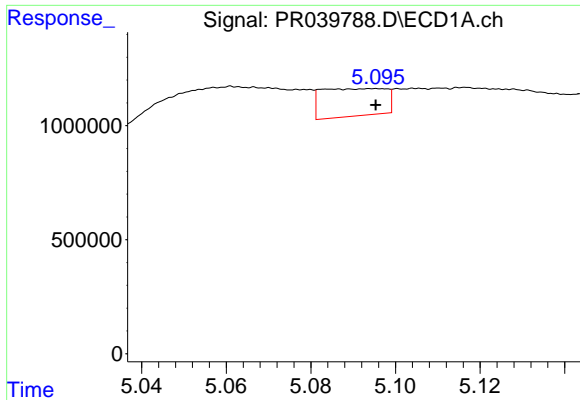
#12 AR-1232-2
 R.T.: 0.000 min
 Exp R.T. : 5.494 min
 Response: 0
 Conc: N.D.



#13 AR-1232-3
 R.T.: 5.006 min
 Delta R.T.: -0.008 min
 Response: 2670552
 Conc: 63.17 ng/ml

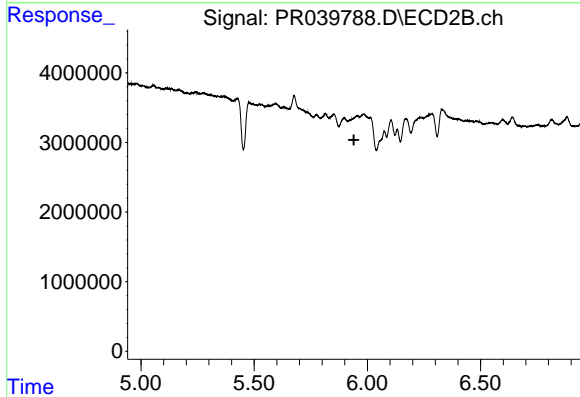


#13 AR-1232-3
 R.T.: 0.000 min
 Exp R.T. : 5.780 min
 Response: 0
 Conc: N.D.

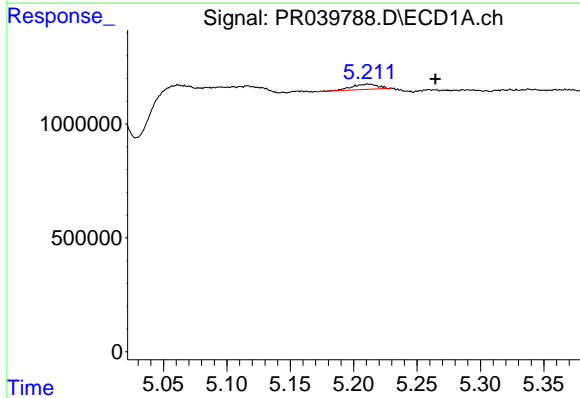


#14 AR-1232-4
 R.T.: 5.095 min
 Delta R.T.: 0.000 min
 Response: 1277388
 Conc: 32.09 ng/ml

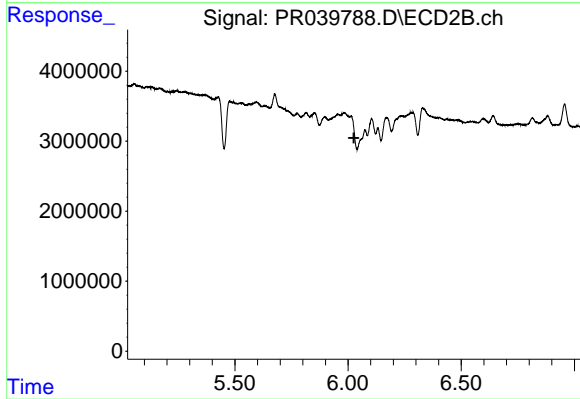
Instrument :
 ECD_R
 ClientSampleId :



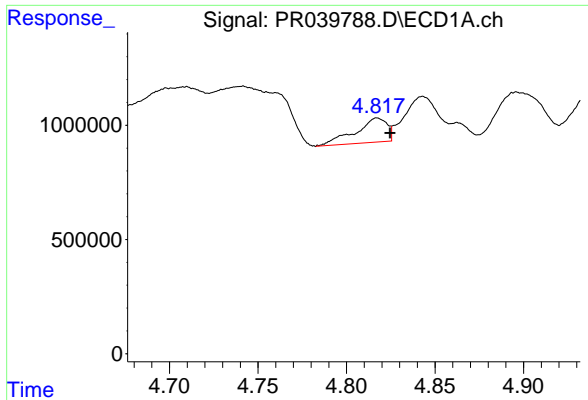
#14 AR-1232-4
 R.T.: 0.000 min
 Exp R.T. : 5.940 min
 Response: 0
 Conc: N.D.



#15 AR-1232-5
 R.T.: 5.211 min
 Delta R.T.: -0.053 min
 Response: 319853
 Conc: 7.56 ng/ml

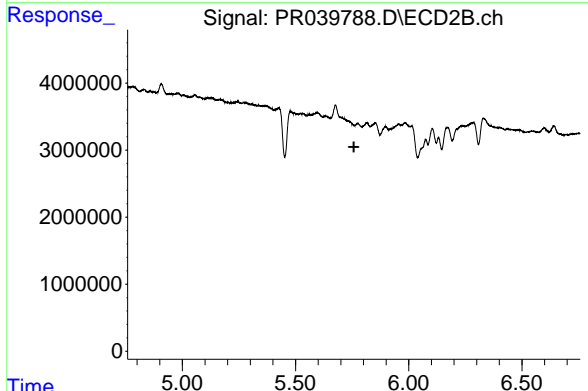


#15 AR-1232-5
 R.T.: 0.000 min
 Exp R.T. : 6.026 min
 Response: 0
 Conc: N.D.

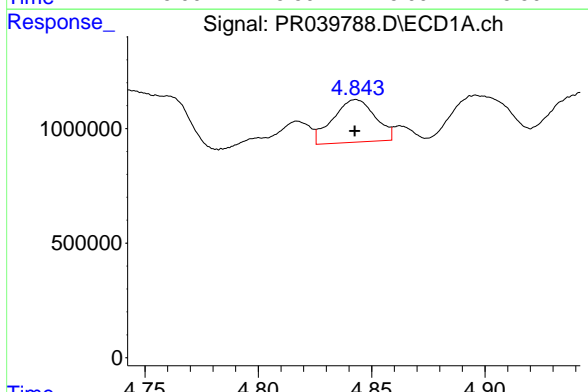


#16 AR-1242-1
 R.T.: 4.817 min
 Delta R.T.: -0.007 min
 Response: 1316915
 Conc: 14.42 ng/ml

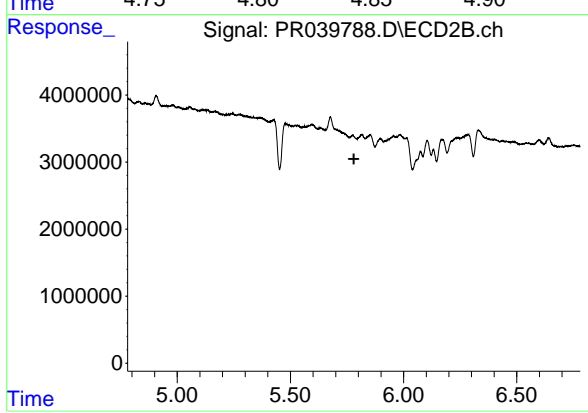
Instrument :
 ECD_R
 ClientSampleId :



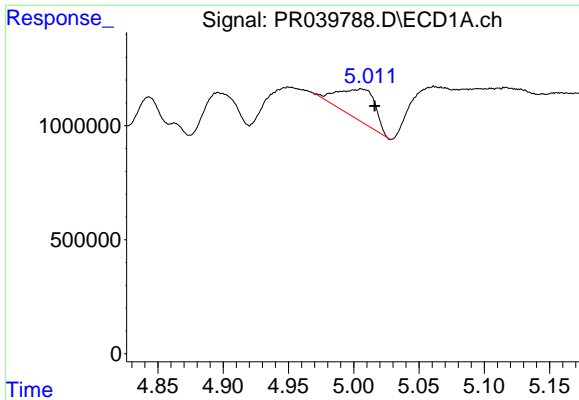
#16 AR-1242-1
 R.T.: 0.000 min
 Exp R.T. : 5.758 min
 Response: 0
 Conc: N.D.



#17 AR-1242-2
 R.T.: 4.843 min
 Delta R.T.: 0.000 min
 Response: 2413459
 Conc: 16.84 ng/ml



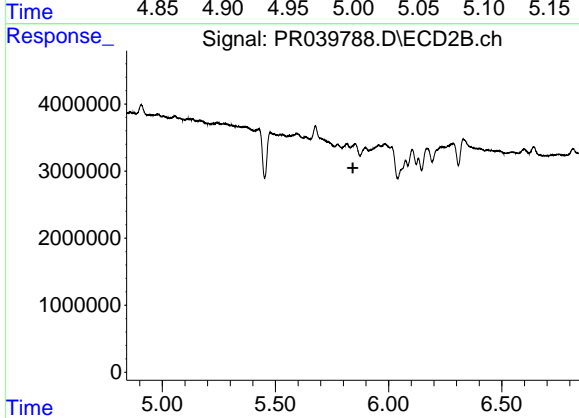
#17 AR-1242-2
 R.T.: 0.000 min
 Exp R.T. : 5.780 min
 Response: 0
 Conc: N.D.



#18 AR-1242-3

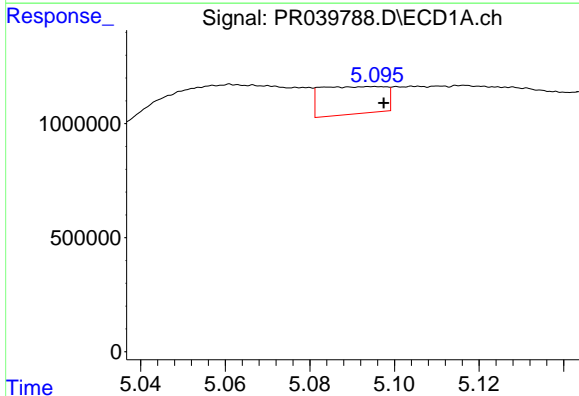
R.T.: 5.006 min
 Delta R.T.: -0.010 min
 Response: 2670552
 Conc: 37.79 ng/ml

Instrument :
 ECD_R
 ClientSampleId :



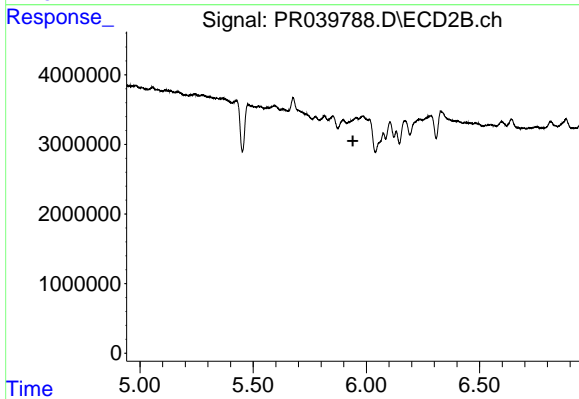
#18 AR-1242-3

R.T.: 0.000 min
 Exp R.T. : 5.842 min
 Response: 0
 Conc: N.D.



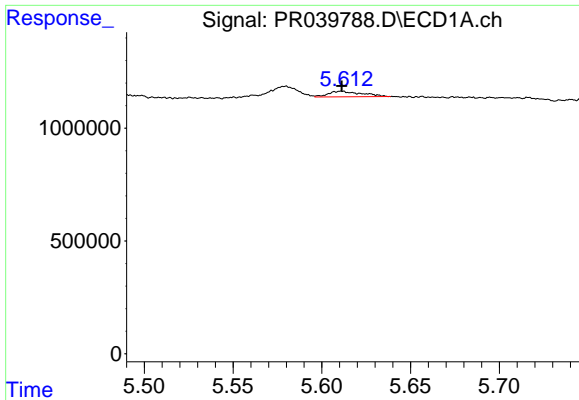
#19 AR-1242-4

R.T.: 5.095 min
 Delta R.T.: -0.002 min
 Response: 1277388
 Conc: 18.26 ng/ml



#19 AR-1242-4

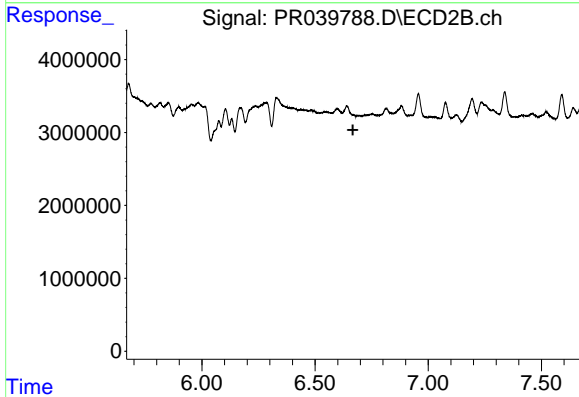
R.T.: 0.000 min
 Exp R.T. : 5.941 min
 Response: 0
 Conc: N.D.



#20 AR-1242-5

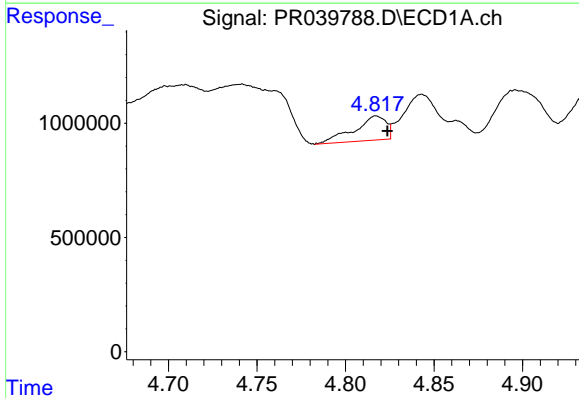
R.T.: 5.611 min
 Delta R.T.: 0.000 min
 Response: 322048
 Conc: 3.24 ng/ml

Instrument :
 ECD_R
 ClientSampleId :



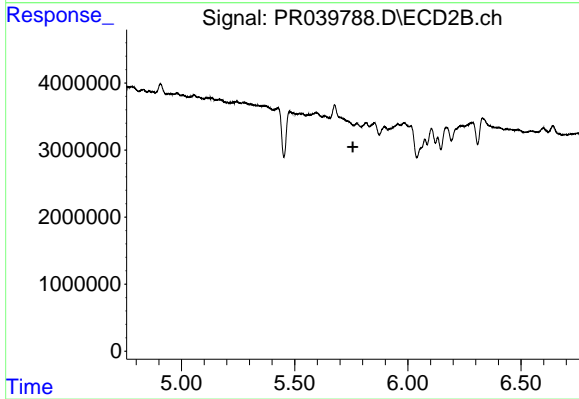
#20 AR-1242-5

R.T.: 0.000 min
 Exp R.T. : 6.667 min
 Response: 0
 Conc: N.D.



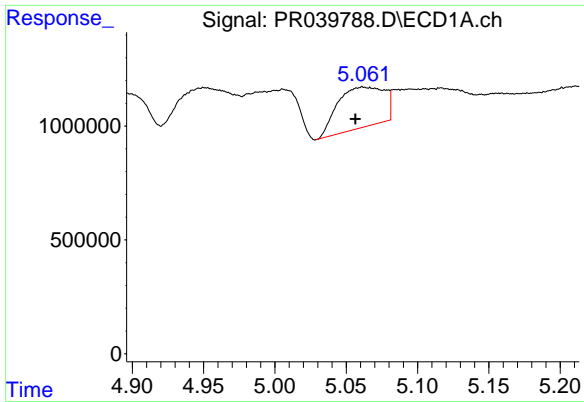
#21 AR-1248-1

R.T.: 4.817 min
 Delta R.T.: -0.006 min
 Response: 1316915
 Conc: 18.20 ng/ml



#21 AR-1248-1

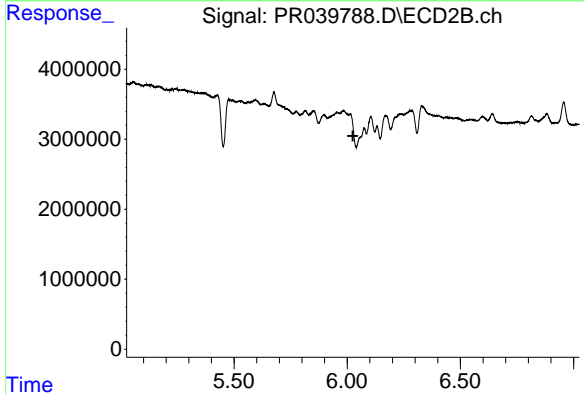
R.T.: 0.000 min
 Exp R.T. : 5.757 min
 Response: 0
 Conc: N.D.



#22 AR-1248-2

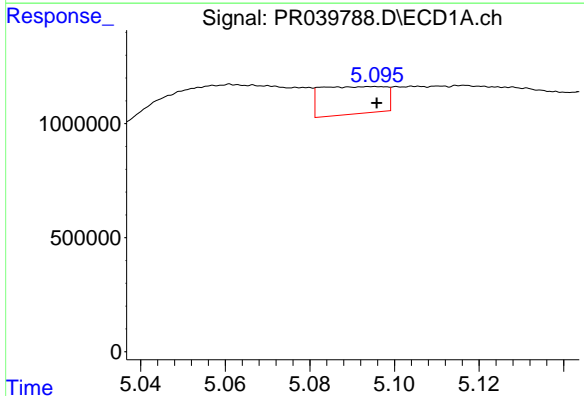
R.T.: 5.061 min
 Delta R.T.: 0.005 min
 Response: 4044092
 Conc: 51.69 ng/ml

Instrument :
 ECD_R
 ClientSampled :



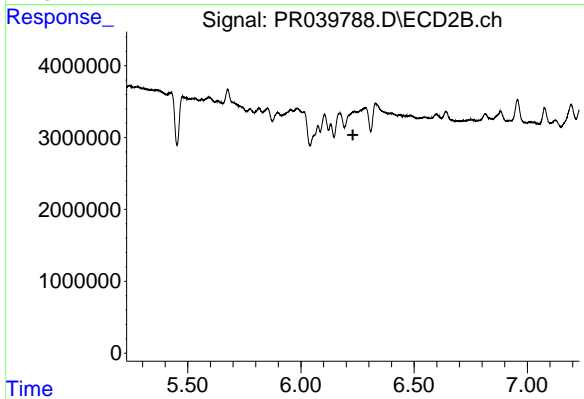
#22 AR-1248-2

R.T.: 0.000 min
 Exp R.T. : 6.025 min
 Response: 0
 Conc: N.D.



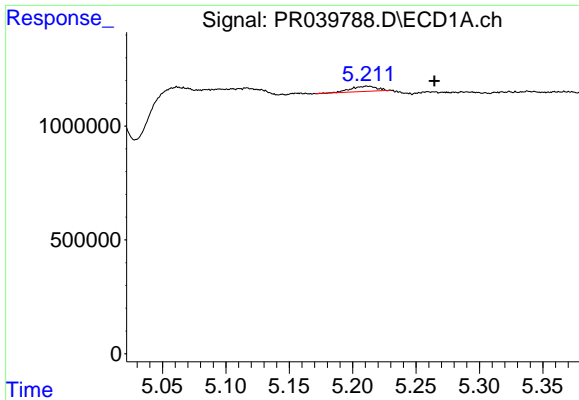
#23 AR-1248-3

R.T.: 5.095 min
 Delta R.T.: 0.000 min
 Response: 1277388
 Conc: 11.96 ng/ml



#23 AR-1248-3

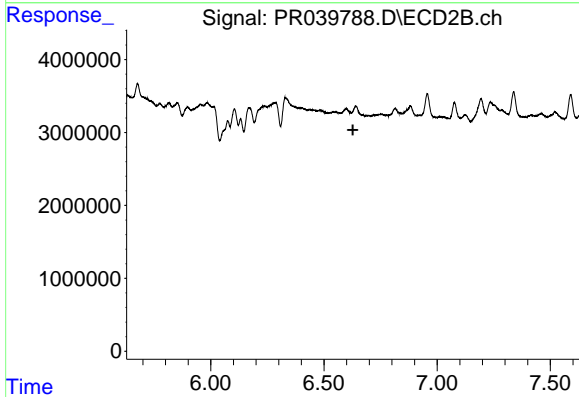
R.T.: 0.000 min
 Exp R.T. : 6.229 min
 Response: 0
 Conc: N.D.



#24 AR-1248-4

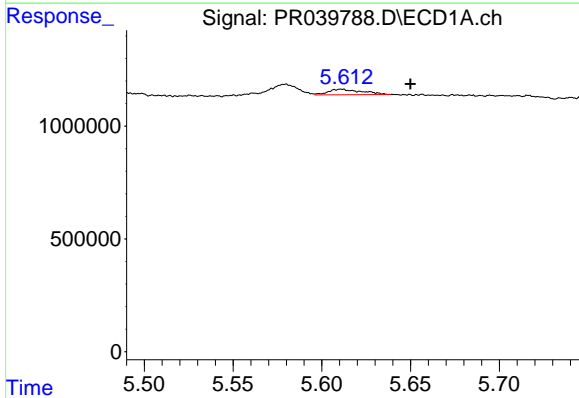
R.T.: 5.211 min
 Delta R.T.: -0.054 min
 Response: 319853
 Conc: 2.42 ng/ml

Instrument :
 ECD_R
 ClientSampleId :



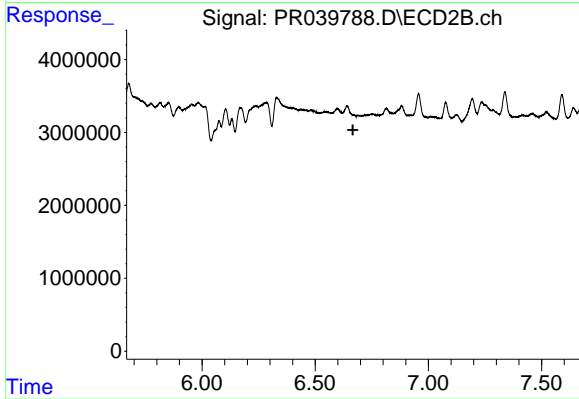
#24 AR-1248-4

R.T.: 0.000 min
 Exp R.T. : 6.628 min
 Response: 0
 Conc: N.D.



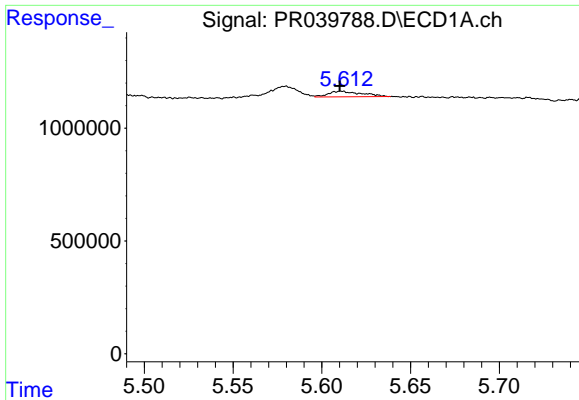
#25 AR-1248-5

R.T.: 5.611 min
 Delta R.T.: -0.039 min
 Response: 322048
 Conc: 2.22 ng/ml



#25 AR-1248-5

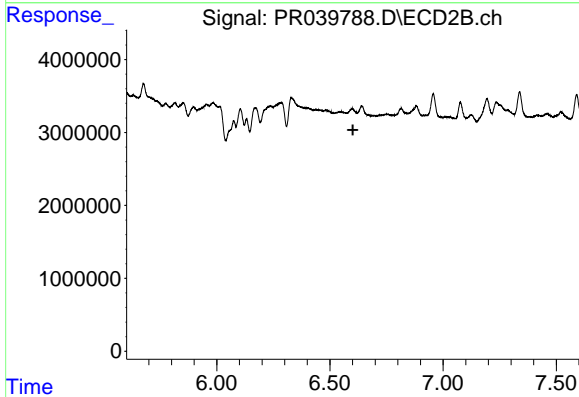
R.T.: 0.000 min
 Exp R.T. : 6.666 min
 Response: 0
 Conc: N.D.



#26 AR-1254-1

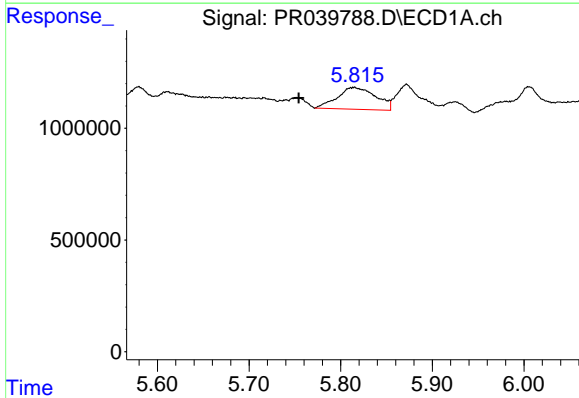
R.T.: 5.611 min
 Delta R.T.: 0.001 min
 Response: 322048
 Conc: 2.09 ng/ml

Instrument :
 ECD_R
 ClientSampleId :



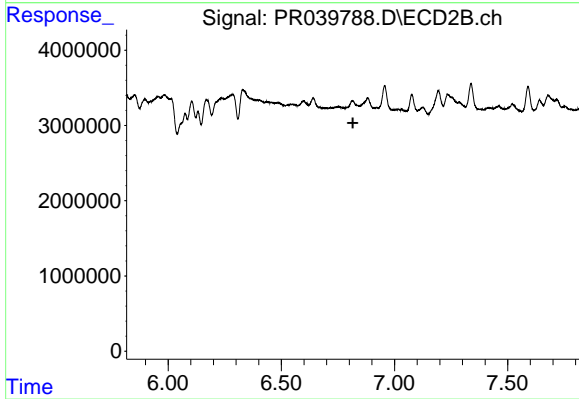
#26 AR-1254-1

R.T.: 0.000 min
 Exp R.T. : 6.601 min
 Response: 0
 Conc: N.D.



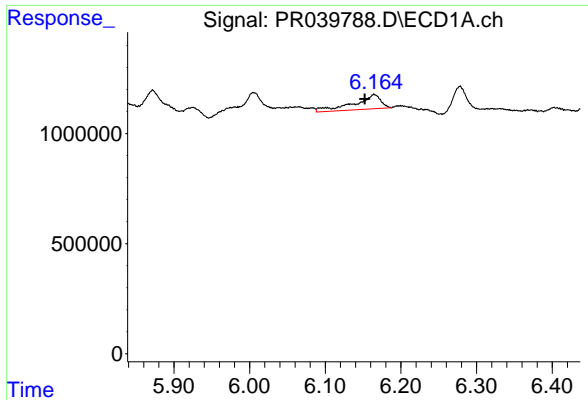
#27 AR-1254-2

R.T.: 5.815 min
 Delta R.T.: 0.061 min
 Response: 2857667
 Conc: 21.83 ng/ml



#27 AR-1254-2

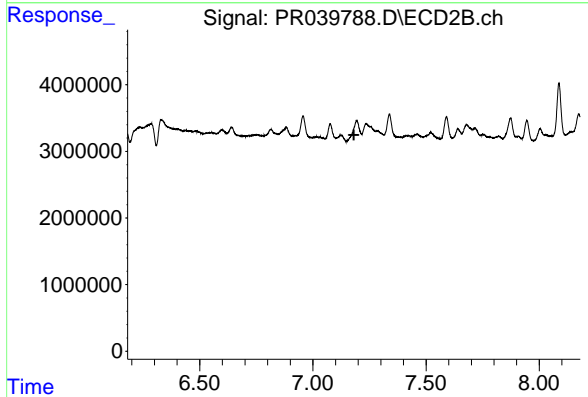
R.T.: 0.000 min
 Exp R.T. : 6.816 min
 Response: 0
 Conc: N.D.



#28 AR-1254-3

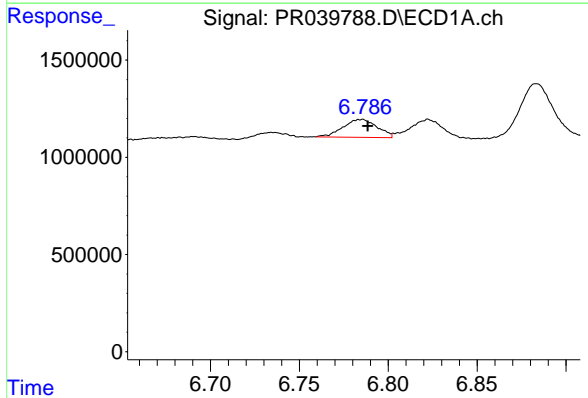
R.T.: 6.164 min
 Delta R.T.: 0.012 min
 Response: 1608407
 Conc: 7.20 ng/ml

Instrument :
 ECD_R
 ClientSampled :



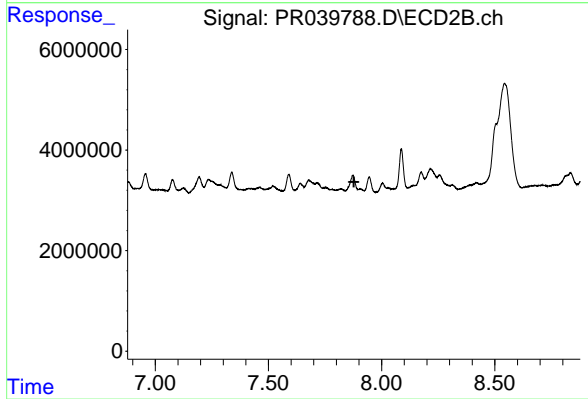
#28 AR-1254-3

R.T.: 0.000 min
 Exp R.T. : 7.181 min
 Response: 0
 Conc: N.D.



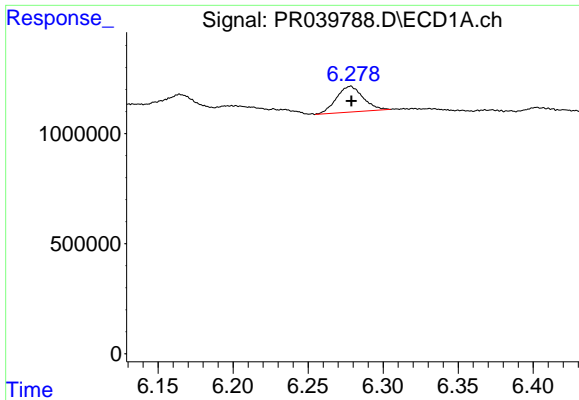
#30 AR-1254-5

R.T.: 6.786 min
 Delta R.T.: -0.003 min
 Response: 1240042
 Conc: 6.51 ng/ml



#30 AR-1254-5

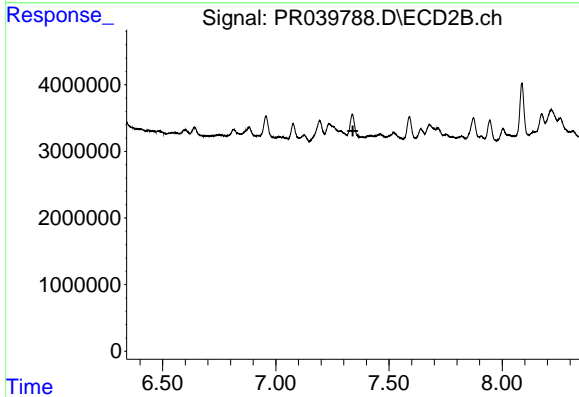
R.T.: 0.000 min
 Exp R.T. : 7.878 min
 Response: 0
 Conc: N.D.



#31 AR-1260-1

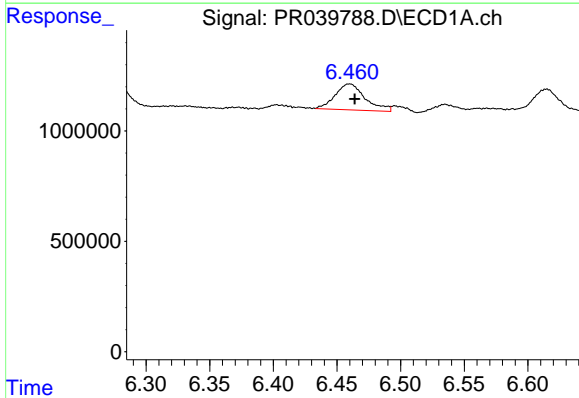
R.T.: 6.278 min
 Delta R.T.: 0.000 min
 Response: 1453724
 Conc: 9.98 ng/ml

Instrument :
 ECD_R
 ClientSampleId :



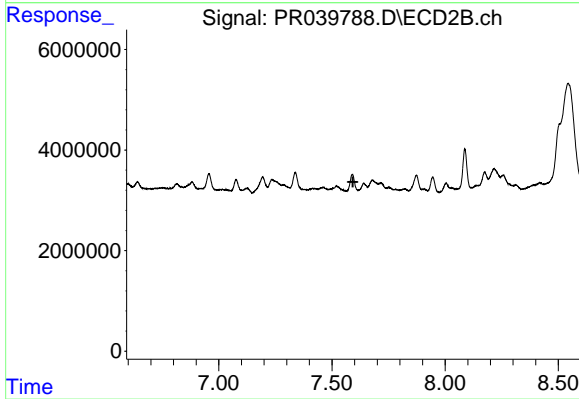
#31 AR-1260-1

R.T.: 0.000 min
 Exp R.T. : 7.340 min
 Response: 0
 Conc: N.D.



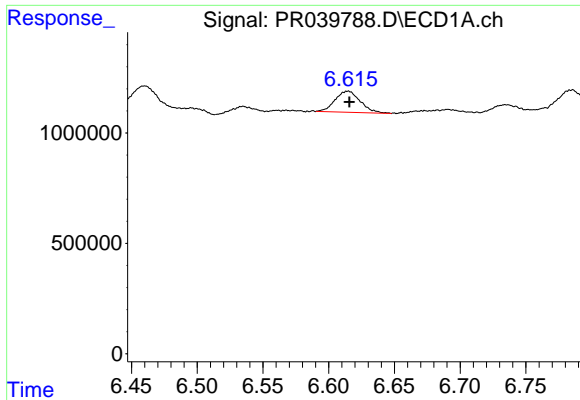
#32 AR-1260-2

R.T.: 6.460 min
 Delta R.T.: -0.004 min
 Response: 1930310
 Conc: 10.48 ng/ml



#32 AR-1260-2

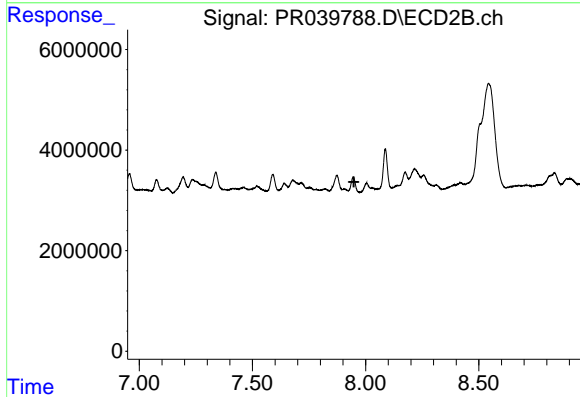
R.T.: 0.000 min
 Exp R.T. : 7.593 min
 Response: 0
 Conc: N.D.



#33 AR-1260-3

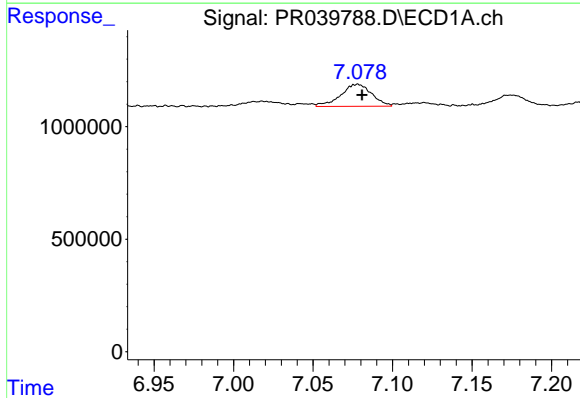
R.T.: 6.615 min
 Delta R.T.: 0.000 min
 Response: 1284564
 Conc: 7.75 ng/ml

Instrument :
 ECD_R
 ClientSampleId :



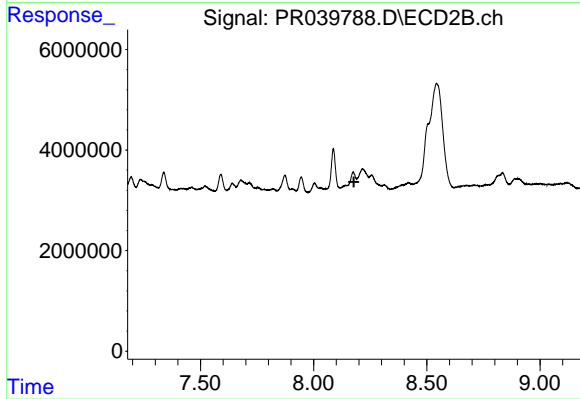
#33 AR-1260-3

R.T.: 0.000 min
 Exp R.T. : 7.948 min
 Response: 0
 Conc: N.D.



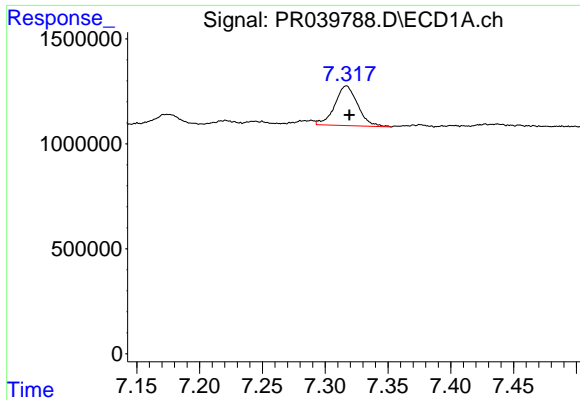
#34 AR-1260-4

R.T.: 7.078 min
 Delta R.T.: -0.003 min
 Response: 1325481
 Conc: 9.54 ng/ml



#34 AR-1260-4

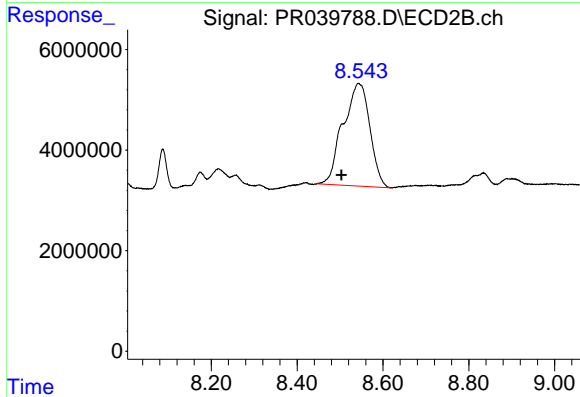
R.T.: 0.000 min
 Exp R.T. : 8.178 min
 Response: 0
 Conc: N.D.



#35 AR-1260-5

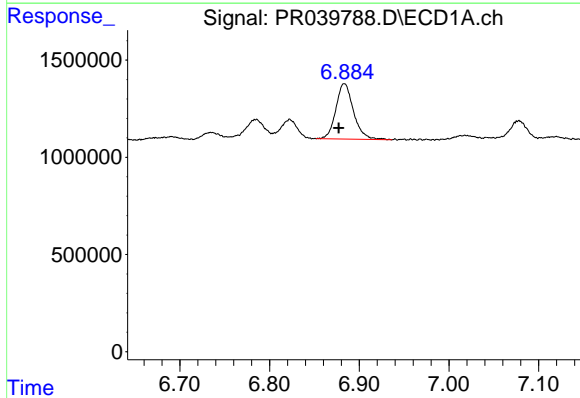
R.T.: 7.317 min
 Delta R.T.: -0.002 min
 Response: 2397328
 Conc: 6.95 ng/ml

Instrument :
 ECD_R
 ClientSampleId :



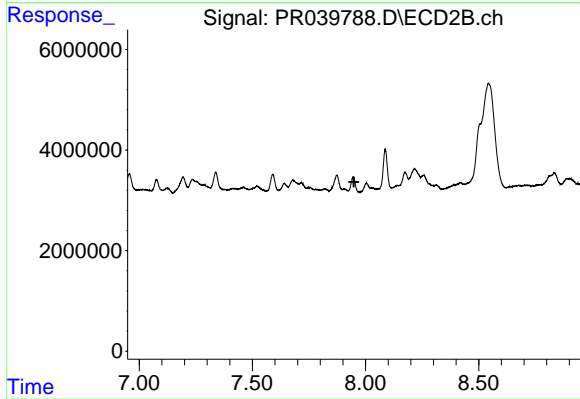
#35 AR-1260-5

R.T.: 8.543 min
 Delta R.T.: 0.040 min
 Response: 8856345
 Conc: 86.34 ng/ml



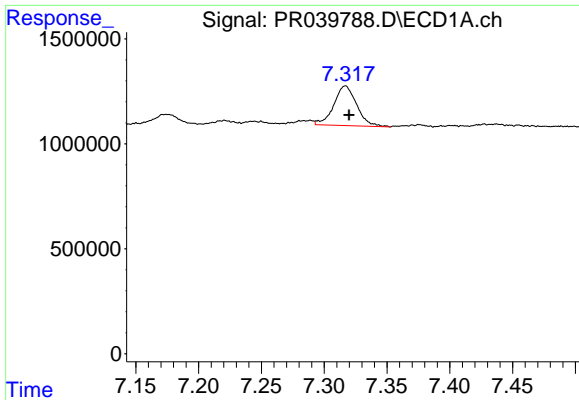
#36 AR-1262-1

R.T.: 6.883 min
 Delta R.T.: 0.006 min
 Response: 3902373
 Conc: 26.58 ng/ml



#36 AR-1262-1

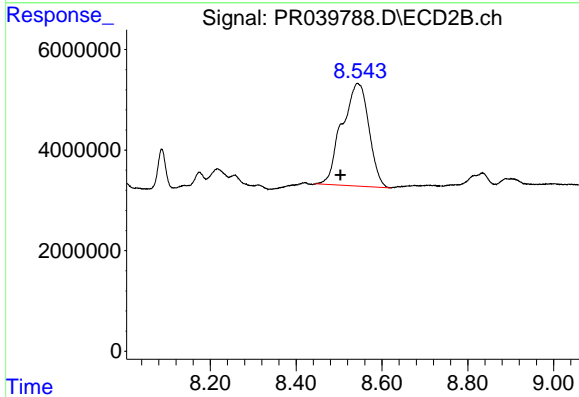
R.T.: 0.000 min
 Exp R.T.: 7.948 min
 Response: 0
 Conc: N.D.



#37 AR-1262-2

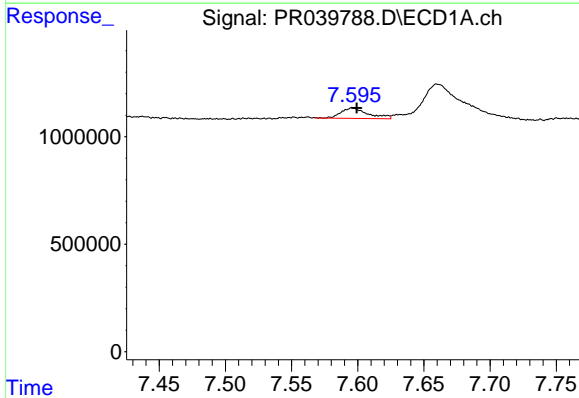
R.T.: 7.317 min
 Delta R.T.: -0.003 min
 Response: 2397328
 Conc: 3.55 ng/ml

Instrument :
 ECD_R
 ClientSampleId :



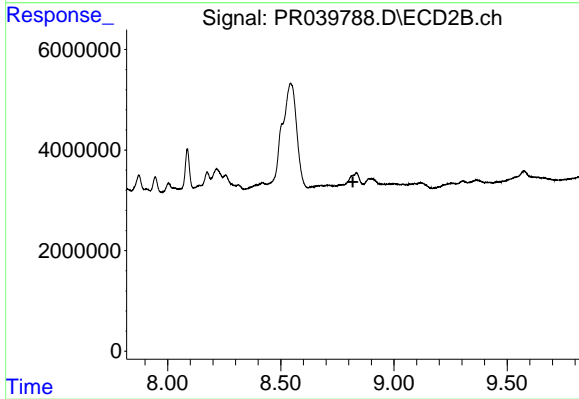
#37 AR-1262-2

R.T.: 8.543 min
 Delta R.T.: 0.040 min
 Response: 88556345
 Conc: 43.96 ng/ml



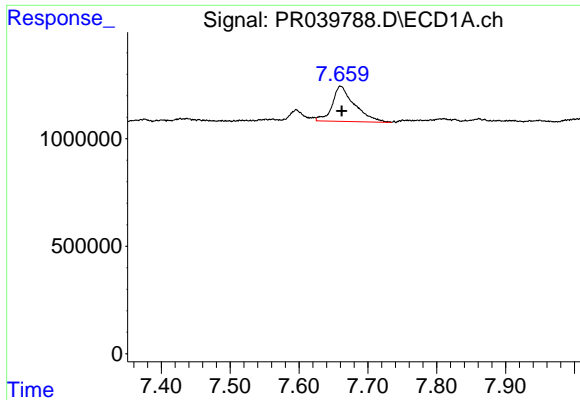
#38 AR-1262-3

R.T.: 7.596 min
 Delta R.T.: -0.003 min
 Response: 692969
 Conc: 2.92 ng/ml



#38 AR-1262-3

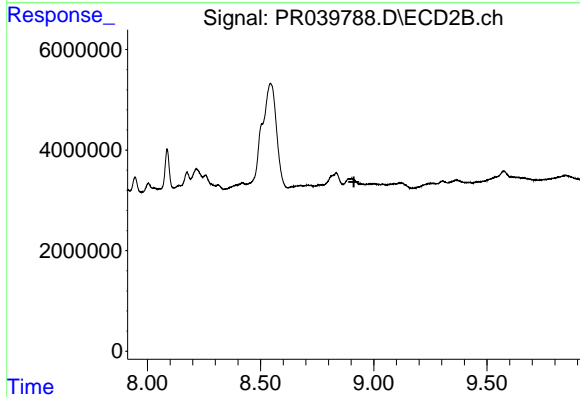
R.T.: 0.000 min
 Exp R.T. : 8.819 min
 Response: 0
 Conc: N.D.



#39 AR-1262-4

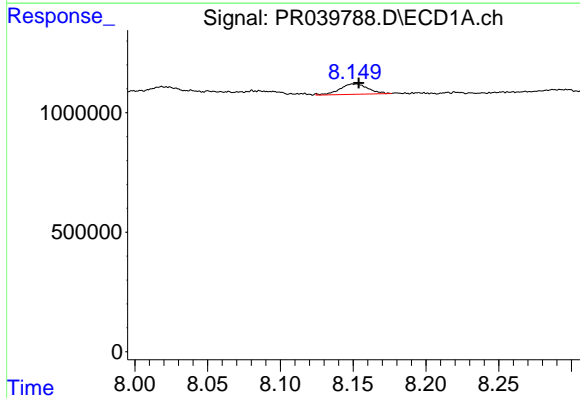
R.T.: 7.660 min
 Delta R.T.: -0.003 min
 Response: 3679597
 Conc: 7.95 ng/ml

Instrument :
 ECD_R
 ClientSampleId :



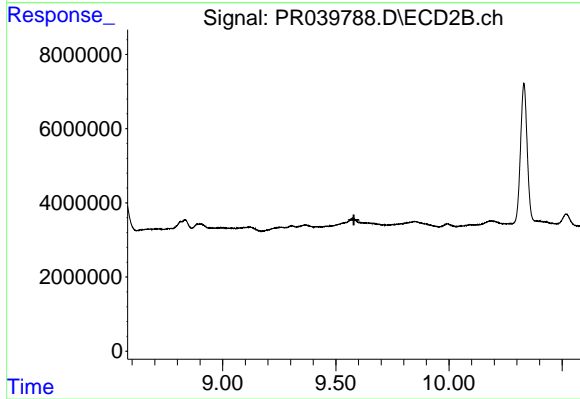
#39 AR-1262-4

R.T.: 0.000 min
 Exp R.T. : 8.912 min
 Response: 0
 Conc: N.D.



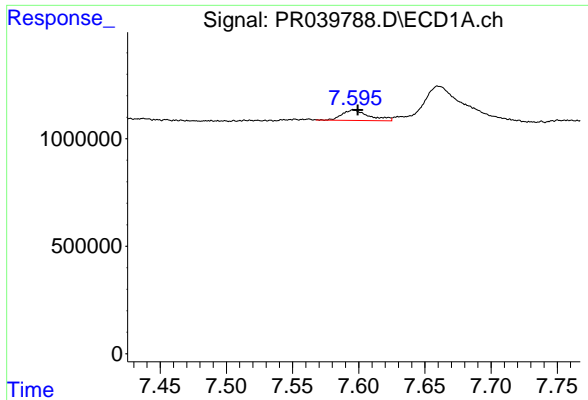
#40 AR-1262-5

R.T.: 8.153 min
 Delta R.T.: -0.001 min
 Response: 580203
 Conc: 2.98 ng/ml



#40 AR-1262-5

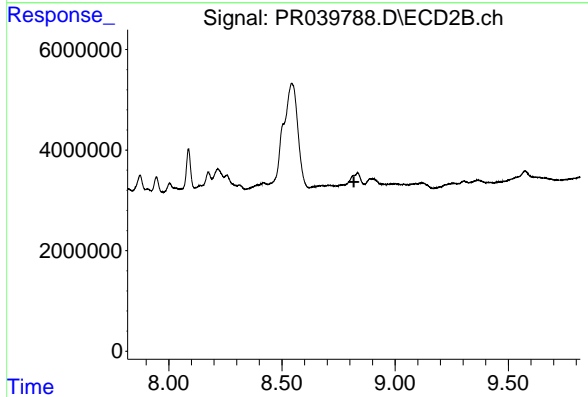
R.T.: 0.000 min
 Exp R.T. : 9.580 min
 Response: 0
 Conc: N.D.



#41 AR-1268-1

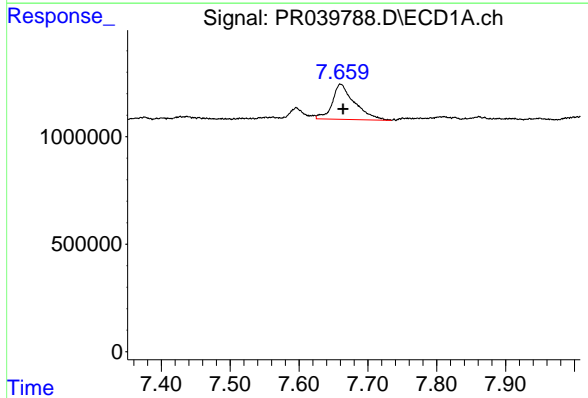
R.T.: 7.596 min
 Delta R.T.: -0.003 min
 Response: 692969
 Conc: 0.90 ng/ml

Instrument :
 ECD_R
 ClientSampleId :



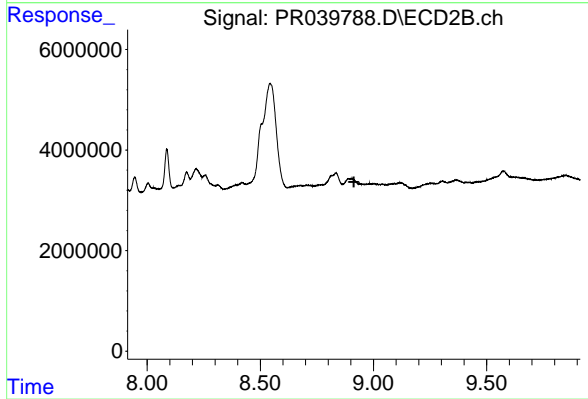
#41 AR-1268-1

R.T.: 0.000 min
 Exp R.T. : 8.818 min
 Response: 0
 Conc: N.D.



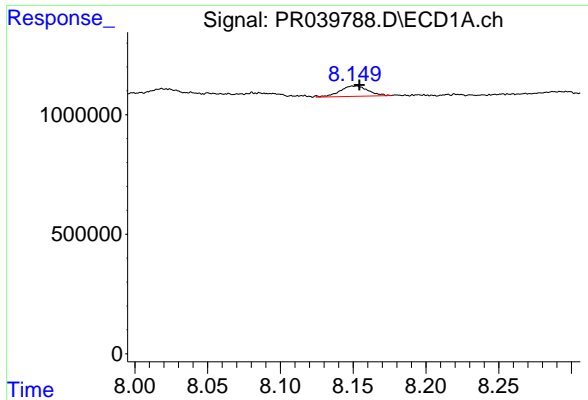
#42 AR-1268-2

R.T.: 7.660 min
 Delta R.T.: -0.004 min
 Response: 3679597
 Conc: 5.24 ng/ml



#42 AR-1268-2

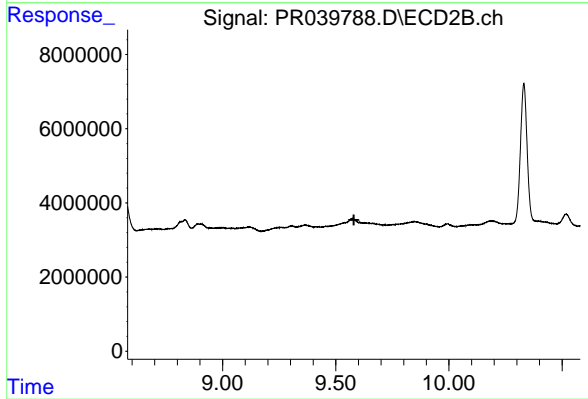
R.T.: 0.000 min
 Exp R.T. : 8.913 min
 Response: 0
 Conc: N.D.



#44 AR-1268-4

R.T.: 8.153 min
Delta R.T.: -0.002 min
Response: 580203
Conc: 2.52 ng/ml

Instrument :
ECD_R
ClientSampleId :



#44 AR-1268-4

R.T.: 0.000 min
Exp R.T. : 9.580 min
Response: 0
Conc: N.D.