

Data Path : Z:\pestpcbsrv\HPCHEM1\ECD\_R\Data\PR080118\  
 Data File : PR031017.D  
 Signal(s) : Signal #1: ECD1A.ch Signal #2: ECD2B.ch  
 Acq On : 01 Aug 2018 11:19 am  
 Operator : SM\MA  
 Sample : AR1248CCC500  
 Misc :  
 ALS Vial : 39 Sample Multiplier: 1

Instrument :  
 ECD\_R  
 ClientSampleId :

Integration File signal 1: autoint1.e  
 Integration File signal 2: autoint2.e  
 Quant Time: Aug 01 11:40:32 2018  
 Quant Method : Z:\pestpcbsrv\HPCHEM1\ECD\_R\Method\PR073118.M  
 Quant Title : GC EXTRACTABLES  
 QLast Update : Wed Aug 01 10:06:46 2018  
 Response via : Initial Calibration  
 Integrator: ChemStation

Volume Inj. : 2 µl  
 Signal #1 Phase : ZB-MR1 Signal #2 Phase: ZB-MR2  
 Signal #1 Info : 30Mx0.32mmx 0.50µ Signal #2 Info : 30M x 0.32mm x 0.25µm

| Compound                    | RT#1   | RT#2  | Resp#1   | Resp#2   | ng/ml    | ng/ml      |
|-----------------------------|--------|-------|----------|----------|----------|------------|
| System Monitoring Compounds |        |       |          |          |          |            |
| 1) SA Tetrachlo...          | 4.558  | 3.689 | 824.7E6  | 1472.8E6 | 56.143   | 55.983     |
| 2) SA Decachlor...          | 10.322 | 8.584 | 1905.1E6 | 1141.6E6 | 53.653   | 52.605     |
| Target Compounds            |        |       |          |          |          |            |
| 3) L1 AR-1016-1             | 4.923  | 4.346 | 24417648 | 353.0E6  | 89.954   | 409.701 #  |
| 4) L1 AR-1016-2             | 5.451  | 4.749 | 94143739 | 456.6E6  | 222.838  | 338.555 #  |
| 5) L1 AR-1016-3             | 5.739  | 4.766 | 285.3E6  | 580.0E6  | 283.030  | 235.140    |
| 6) L1 AR-1016-4             | 5.801  | 4.823 | 140.5E6  | 348.1E6  | 233.029  | 235.322    |
| 7) L1 AR-1016-5             | 6.332  | 4.978 | 346.1E6  | 723.4E6  | 581.166  | 721.549    |
| 8) L2 AR-1221-1             | 4.754  | 3.896 | 7031663  | 8370010  | 38.773   | 22.724 #   |
| 9) L2 AR-1221-2             | 4.862  | 3.984 | 16921802 | 31466313 | 119.466  | 112.351    |
| 10) L2 AR-1221-3            | 4.923  | 4.056 | 24417648 | 61623679 | 56.929   | 67.629     |
| 11) L3 AR-1232-1            | 5.257  | 4.346 | 113.3E6  | 353.0E6  | 579.224  | 875.096 #  |
| 12) L3 AR-1232-2            | 5.451  | 4.766 | 94143739 | 580.0E6  | 496.603  | 519.562    |
| 13) L3 AR-1232-3            | 5.739  | 4.823 | 285.3E6  | 348.1E6  | 561.037  | 517.154    |
| 14) L3 AR-1232-4            | 5.801  | 5.018 | 140.5E6  | 755.6E6  | 513.284  | 1491.195 # |
| 15) L3 AR-1232-5            | 6.192  | 5.332 | 399.6E6  | 874.7E6  | 1731.118 | 1418.887   |
| 16) L4 AR-1242-1            | 5.451  | 4.533 | 94143739 | 241.4E6  | 265.518  | 280.010    |
| 17) L4 AR-1242-2            | 5.716  | 4.766 | 238.5E6  | 580.0E6  | 404.498  | 286.239 #  |
| 18) L4 AR-1242-3            | 5.739  | 4.941 | 285.3E6  | 350.8E6  | 345.282  | 364.481    |
| 19) L4 AR-1242-4            | 6.192  | 4.978 | 399.6E6  | 723.4E6  | 859.603  | 883.877    |
| 20) L4 AR-1242-5            | 6.332  | 5.188 | 346.1E6  | 959.6E6  | 657.878  | 806.593    |
| 21) L5 AR-1248-1            | 6.192  | 4.978 | 399.6E6  | 723.4E6  | 551.774  | 534.230    |
| 22) L5 AR-1248-2            | 6.332  | 5.018 | 346.1E6  | 755.6E6  | 550.265  | 536.252    |
| 23) L5 AR-1248-3            | 6.592  | 5.188 | 525.1E6  | 959.6E6  | 542.232  | 532.895    |
| 24) L5 AR-1248-4            | 6.632  | 5.531 | 497.7E6  | 1509.7E6 | 544.377  | 533.475    |
| 25) L5 AR-1248-5            | 6.789  | 5.572 | 519.9E6  | 1096.1E6 | 546.271  | 541.060    |
| 26) L6 AR-1254-1            | 5.987  | 4.978 | 343.7E6  | 723.4E6  | 613.825  | 563.907    |
| 27) L6 AR-1254-2            | 6.789  | 5.674 | 519.9E6  | 487.3E6  | 272.368  | 141.349 #  |
| 28) L6 AR-1254-3            | 7.150  | 6.071 | 299.8E6  | 759.6E6  | 141.232  | 134.387    |
| 29) L6 AR-1254-4            | 7.433  | 6.296 | 242.6E6  | 554.3E6  | 128.324  | 126.543    |
| 30) L6 AR-1254-5            | 7.850  | 6.704 | 63051215 | 127.6E6  | 31.717   | 30.380     |
| 31) L7 AR-1260-1            | 7.315  | 6.196 | 38440861 | 124.4E6  | 29.374   | 39.149 #   |
| 32) L7 AR-1260-2            | 7.565  | 6.381 | 38564945 | 92117751 | 20.149   | 23.295     |
| 33) L7 AR-1260-3            | 7.850  | 6.733 | 63051215 | 41518961 | 28.813   | 14.661 #   |
| 34) L7 AR-1260-4            | 8.478  | 7.233 | 22741768 | 48789145 | 6.074    | 13.300 #   |
| 35) L7 AR-1260-5            | 8.800  | 7.575 | 19283003 | 25328395 | 8.156    | 11.942 #   |
| 36) L8 AR-1262-1            | 7.315  | 6.196 | 38440861 | 124.4E6  | 31.158   | 43.600 #   |
| 37) L8 AR-1262-2            | 7.565  | 6.381 | 38564945 | 92117751 | 22.113   | 26.597     |
| 38) L8 AR-1262-3            | 7.924  | 6.733 | 18192104 | 41518961 | 6.901    | 9.908 #    |
| 39) L8 AR-1262-4            | 8.143  | 6.993 | 38743999 | 18786619 | 18.291   | 6.895 #    |
| 40) L8 AR-1262-5            | 8.478  | 7.233 | 22741768 | 48789145 | 4.664    | 10.664 #   |
| 41) L9 AR-1268-1            | 8.800  | 7.509 | 19283003 | 20080068 | 3.462    | 5.113 #    |

Data Path : Z:\pestpcbsrv\HPCHEM1\ECD\_R\Data\PR080118\  
 Data File : PR031017.D  
 Signal(s) : Signal #1: ECD1A.ch Signal #2: ECD2B.ch  
 Acq On : 01 Aug 2018 11:19 am  
 Operator : SM\MA  
 Sample : AR1248CCC500  
 Misc :  
 ALS Vial : 39 Sample Multiplier: 1

Instrument :  
 ECD\_R  
 ClientSampleId :

Integration File signal 1: autoint1.e  
 Integration File signal 2: autoint2.e  
 Quant Time: Aug 01 11:40:32 2018  
 Quant Method : Z:\pestpcbsrv\HPCHEM1\ECD\_R\Method\PR073118.M  
 Quant Title : GC EXTRACTABLES  
 QLast Update : Wed Aug 01 10:06:46 2018  
 Response via : Initial Calibration  
 Integrator: ChemStation

Volume Inj. : 2 µl  
 Signal #1 Phase : ZB-MR1 Signal #2 Phase: ZB-MR2  
 Signal #1 Info : 30Mx0.32mmx 0.50µ Signal #2 Info : 30M x 0.32mm x 0.25µm

|     | Compound     | RT#1  | RT#2  | Resp#1   | Resp#2   | ng/ml | ng/ml   |
|-----|--------------|-------|-------|----------|----------|-------|---------|
| 42) | L9 AR-1268-2 | 8.886 | 7.575 | 14770483 | 25328395 | 3.073 | 7.611 # |
| 43) | L9 AR-1268-3 | 9.125 | 7.772 | 18987137 | 19468675 | 4.379 | 7.258 # |
| 44) | L9 AR-1268-4 | 9.555 | 8.064 | 16459183 | 11527064 | 8.538 | 9.945   |
| 45) | L9 AR-1268-5 | 9.976 | 8.344 | 22567244 | 16294460 | 1.767 | 2.330 # |

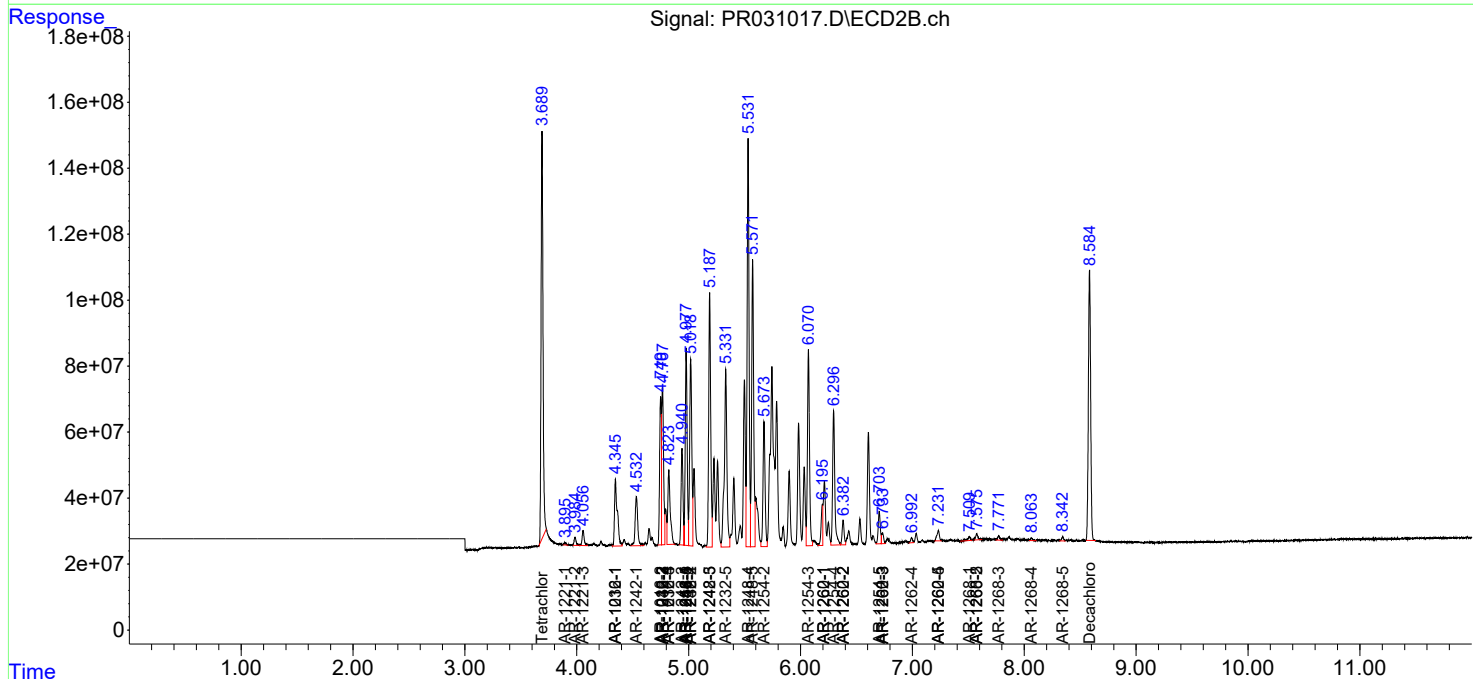
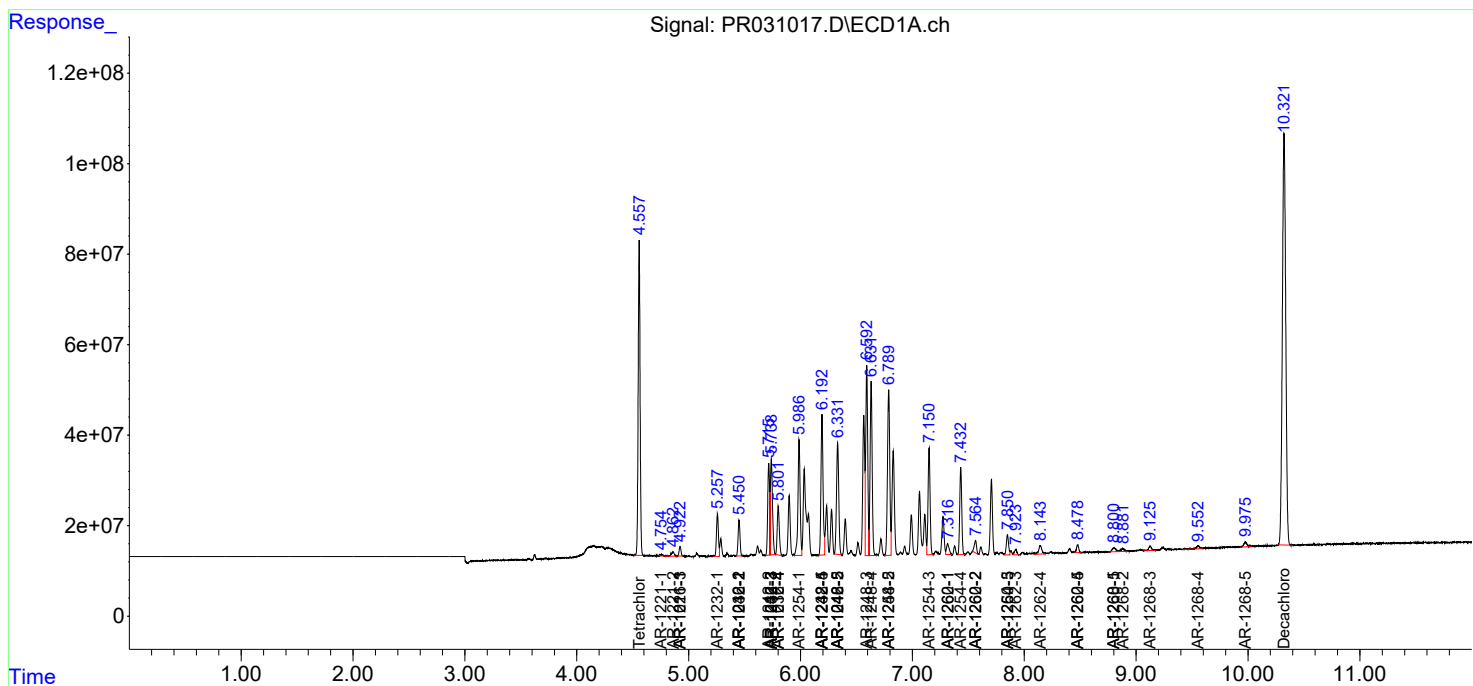
(f)=RT Delta > 1/2 Window (#)=Amounts differ by > 25% (m)=manual int.

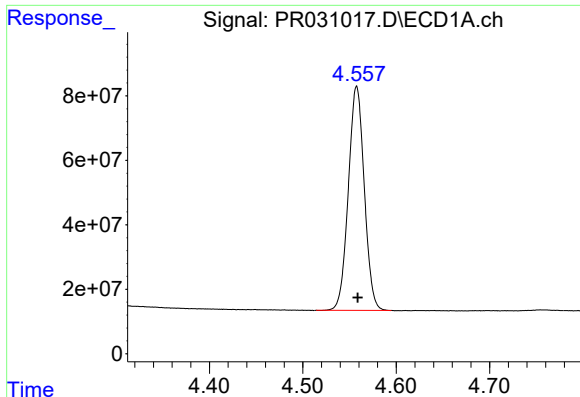
Data Path : Z:\pestpcbsrv\HPCHEM1\ECD\_R\Data\PR080118\  
 Data File : PR031017.D  
 Signal(s) : Signal #1: ECD1A.ch Signal #2: ECD2B.ch  
 Acq On : 01 Aug 2018 11:19 am  
 Operator : SM\MA  
 Sample : AR1248CCC500  
 Misc :  
 ALS Vial : 39 Sample Multiplier: 1

Instrument :  
 ECD\_R  
 ClientSampled :

Integration File signal 1: autoint1.e  
 Integration File signal 2: autoint2.e  
 Quant Time: Aug 01 11:40:32 2018  
 Quant Method : Z:\pestpcbsrv\HPCHEM1\ECD\_R\Method\PR073118.M  
 Quant Title : GC EXTRACTABLES  
 QLast Update : Wed Aug 01 10:06:46 2018  
 Response via : Initial Calibration  
 Integrator: ChemStation

Volume Inj. : 2 µl  
 Signal #1 Phase : ZB-MR1 Signal #2 Phase: ZB-MR2  
 Signal #1 Info : 30Mx0.32mmx 0.50µ Signal #2 Info : 30M x 0.32mm x 0.25µm

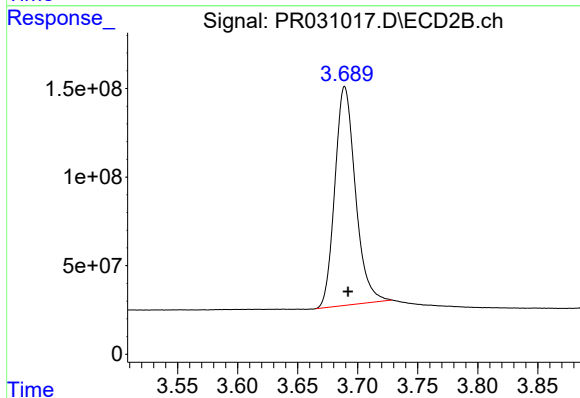




#1 Tetrachloro-m-xylene

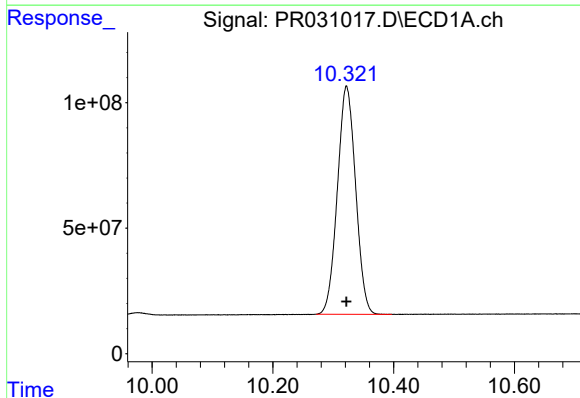
R.T.: 4.558 min  
Delta R.T.: -0.001 min  
Response: 824687790  
Conc: 56.14 ng/ml

Instrument :  
ECD\_R  
ClientSampleId :



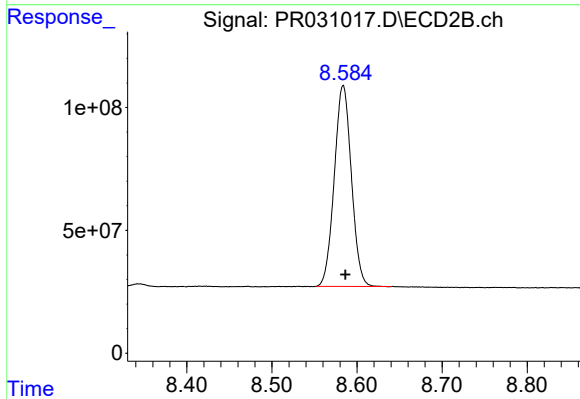
#1 Tetrachloro-m-xylene

R.T.: 3.689 min  
Delta R.T.: -0.003 min  
Response: 1472832229  
Conc: 55.98 ng/ml



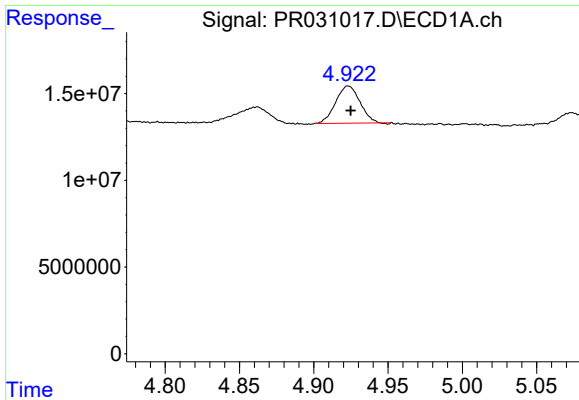
#2 Decachlorobiphenyl

R.T.: 10.322 min  
Delta R.T.: 0.000 min  
Response: 1905080657  
Conc: 53.65 ng/ml



#2 Decachlorobiphenyl

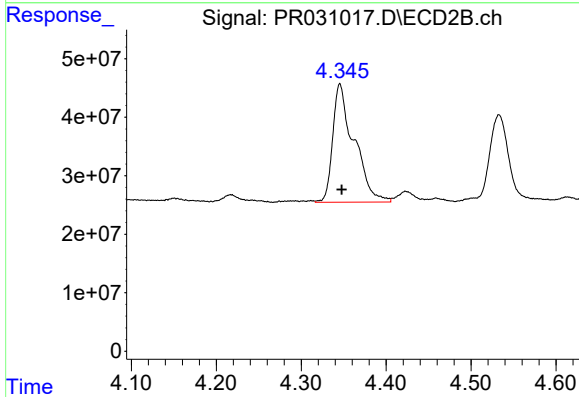
R.T.: 8.584 min  
Delta R.T.: -0.003 min  
Response: 1141591944  
Conc: 52.60 ng/ml



#3 AR-1016-1

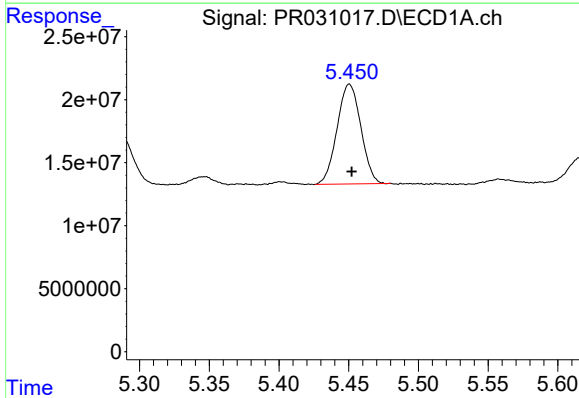
R.T.: 4.923 min  
 Delta R.T.: -0.001 min  
 Response: 24417648  
 Conc: 89.95 ng/ml

Instrument :  
 ECD\_R  
 ClientSampleId :



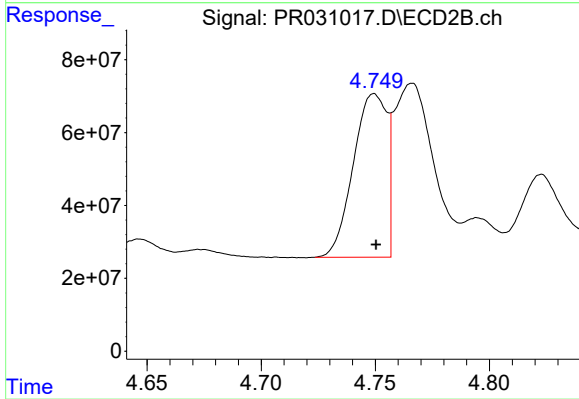
#3 AR-1016-1

R.T.: 4.346 min  
 Delta R.T.: -0.002 min  
 Response: 352971197  
 Conc: 409.70 ng/ml



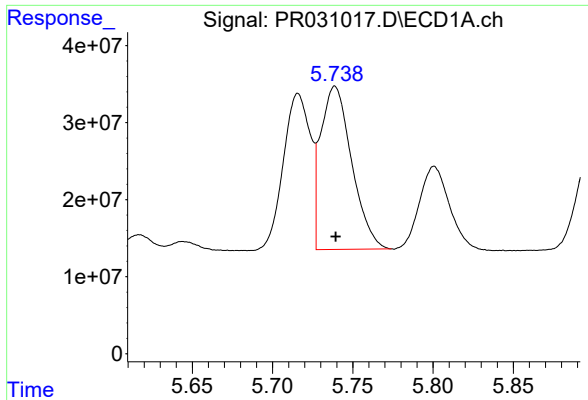
#4 AR-1016-2

R.T.: 5.451 min  
 Delta R.T.: -0.001 min  
 Response: 94143739  
 Conc: 222.84 ng/ml



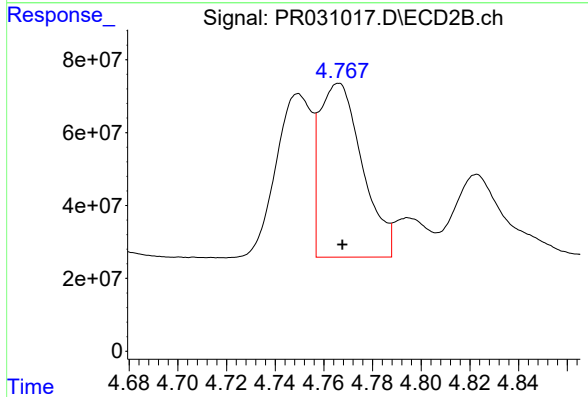
#4 AR-1016-2

R.T.: 4.749 min  
 Delta R.T.: 0.000 min  
 Response: 456598447  
 Conc: 338.55 ng/ml

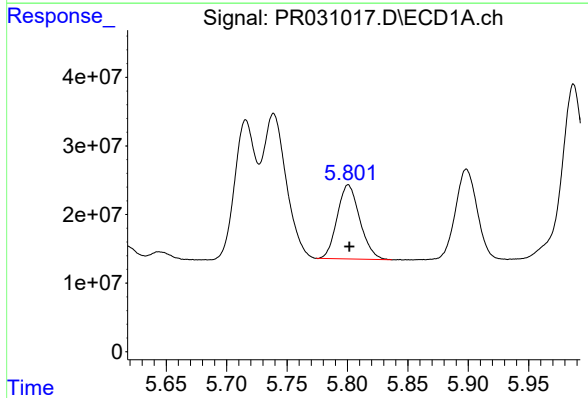


#5 AR-1016-3  
 R.T.: 5.739 min  
 Delta R.T.: 0.000 min  
 Response: 285290155  
 Conc: 283.03 ng/ml

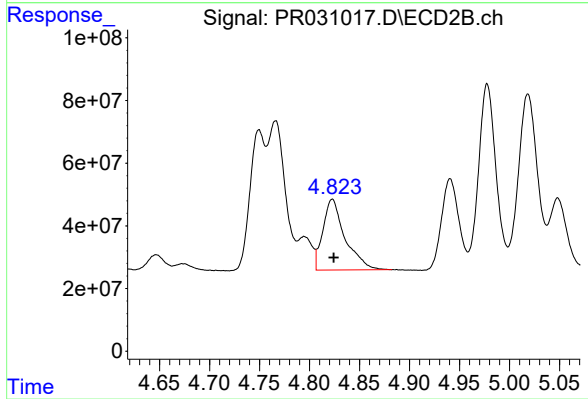
Instrument :  
 ECD\_R  
 ClientSampleId :



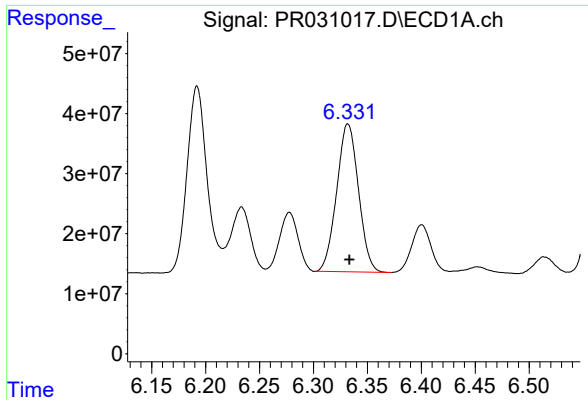
#5 AR-1016-3  
 R.T.: 4.766 min  
 Delta R.T.: -0.002 min  
 Response: 579997822  
 Conc: 235.14 ng/ml



#6 AR-1016-4  
 R.T.: 5.801 min  
 Delta R.T.: -0.001 min  
 Response: 140478282  
 Conc: 233.03 ng/ml

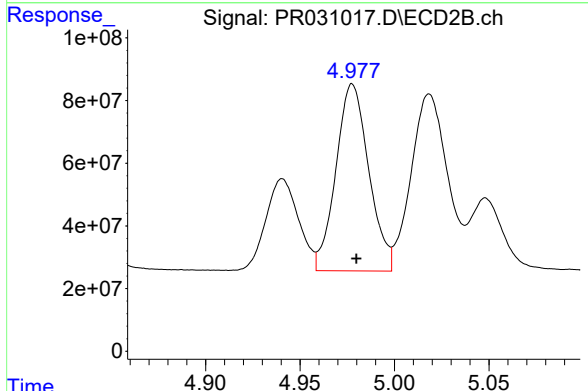


#6 AR-1016-4  
 R.T.: 4.823 min  
 Delta R.T.: -0.001 min  
 Response: 348082174  
 Conc: 235.32 ng/ml

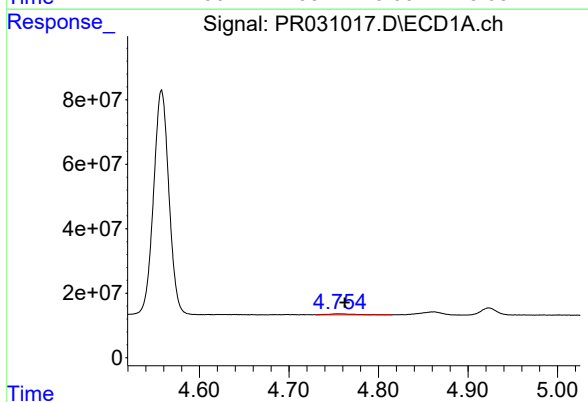


#7 AR-1016-5  
 R.T.: 6.332 min  
 Delta R.T.: -0.001 min  
 Response: 346120746  
 Conc: 581.17 ng/ml

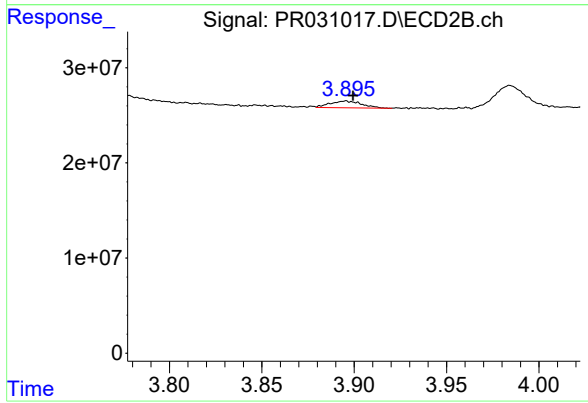
Instrument :  
 ECD\_R  
 ClientSampled :



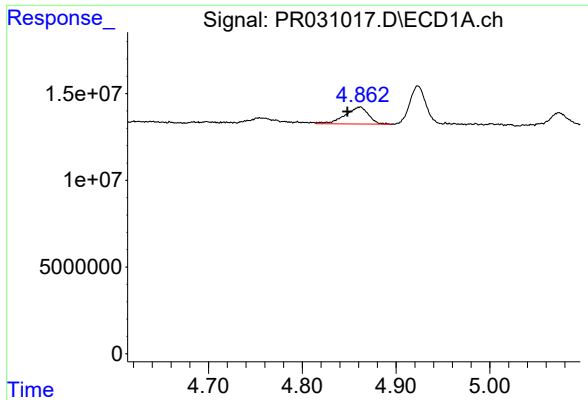
#7 AR-1016-5  
 R.T.: 4.978 min  
 Delta R.T.: -0.002 min  
 Response: 723394815  
 Conc: 721.55 ng/ml



#8 AR-1221-1  
 R.T.: 4.754 min  
 Delta R.T.: -0.008 min  
 Response: 7031663  
 Conc: 38.77 ng/ml

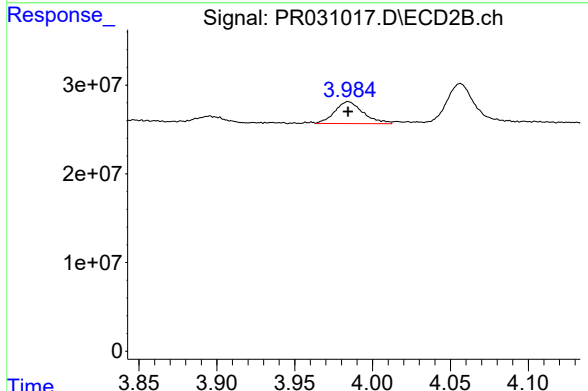


#8 AR-1221-1  
 R.T.: 3.896 min  
 Delta R.T.: -0.004 min  
 Response: 8370010  
 Conc: 22.72 ng/ml

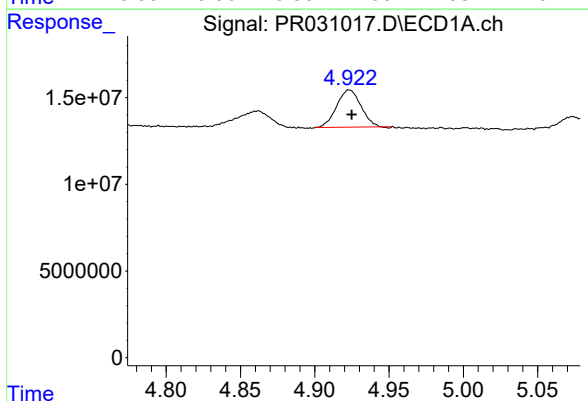


#9 AR-1221-2  
 R.T.: 4.862 min  
 Delta R.T.: 0.014 min  
 Response: 16921802  
 Conc: 119.47 ng/ml

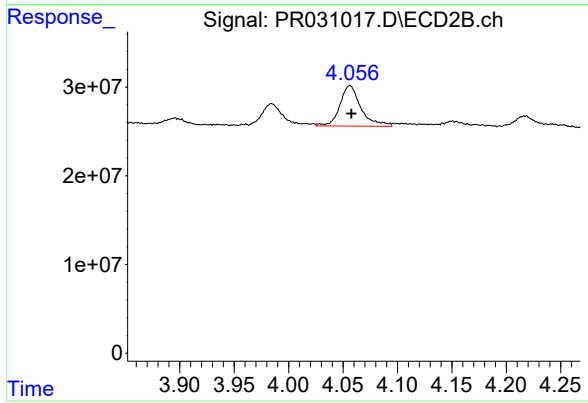
Instrument :  
 ECD\_R  
 ClientSampleId :



#9 AR-1221-2  
 R.T.: 3.984 min  
 Delta R.T.: 0.000 min  
 Response: 31466313  
 Conc: 112.35 ng/ml

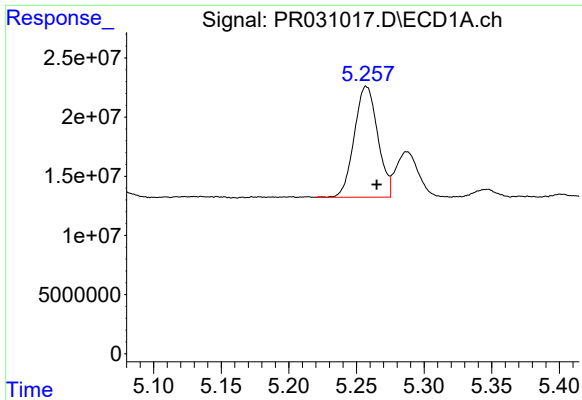


#10 AR-1221-3  
 R.T.: 4.923 min  
 Delta R.T.: -0.002 min  
 Response: 24417648  
 Conc: 56.93 ng/ml



#10 AR-1221-3  
 R.T.: 4.056 min  
 Delta R.T.: -0.001 min  
 Response: 61623679  
 Conc: 67.63 ng/ml

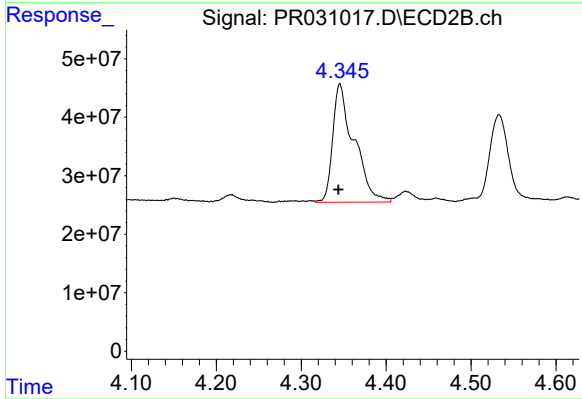




#11 AR-1232-1

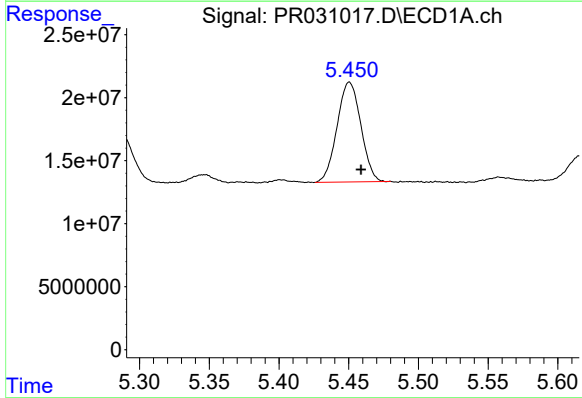
R.T.: 5.257 min  
 Delta R.T.: -0.008 min  
 Response: 113268975  
 Conc: 579.22 ng/ml

Instrument :  
 ECD\_R  
 ClientSampleId :



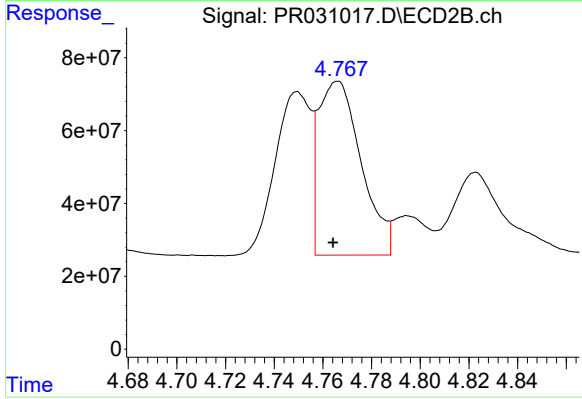
#11 AR-1232-1

R.T.: 4.346 min  
 Delta R.T.: 0.002 min  
 Response: 352971197  
 Conc: 875.10 ng/ml



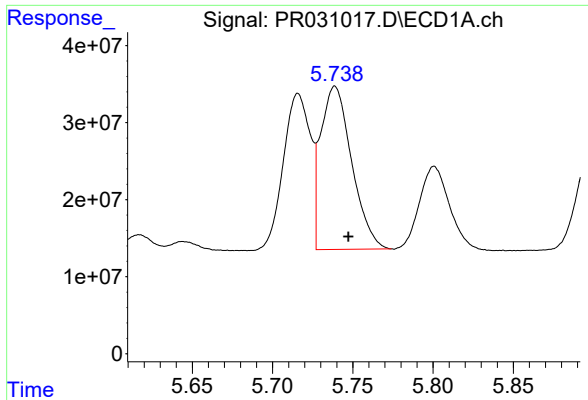
#12 AR-1232-2

R.T.: 5.451 min  
 Delta R.T.: -0.008 min  
 Response: 94143739  
 Conc: 496.60 ng/ml



#12 AR-1232-2

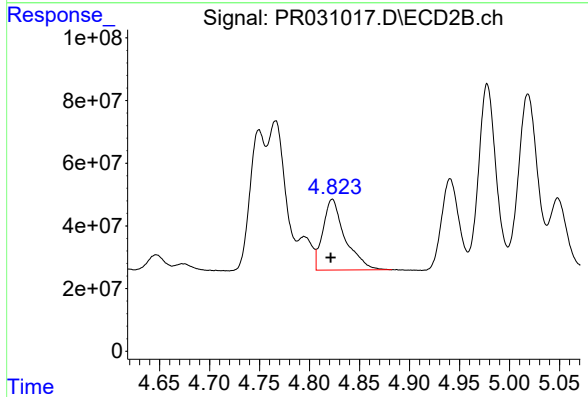
R.T.: 4.766 min  
 Delta R.T.: 0.002 min  
 Response: 579997822  
 Conc: 519.56 ng/ml



#13 AR-1232-3

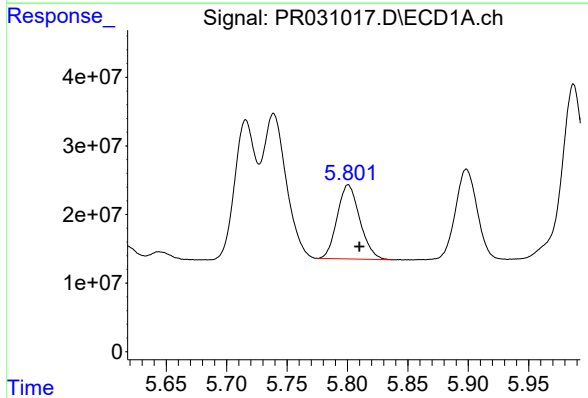
R.T.: 5.739 min  
 Delta R.T.: -0.008 min  
 Response: 285290155  
 Conc: 561.04 ng/ml

Instrument :  
 ECD\_R  
 ClientSampleId :



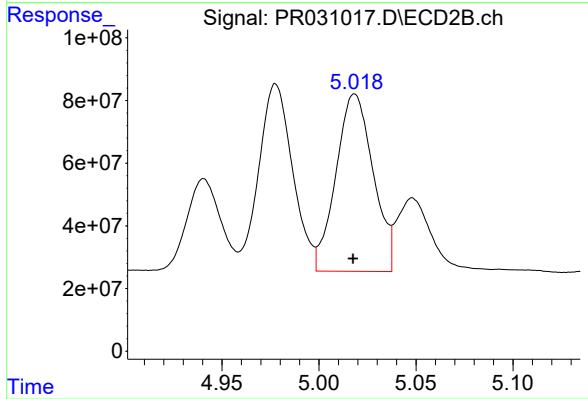
#13 AR-1232-3

R.T.: 4.823 min  
 Delta R.T.: 0.002 min  
 Response: 348082174  
 Conc: 517.15 ng/ml



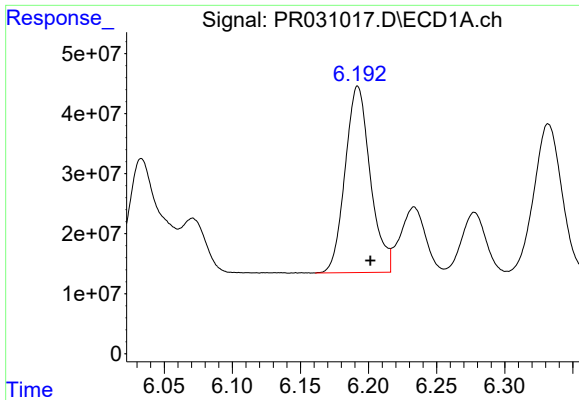
#14 AR-1232-4

R.T.: 5.801 min  
 Delta R.T.: -0.009 min  
 Response: 140478282  
 Conc: 513.28 ng/ml



#14 AR-1232-4

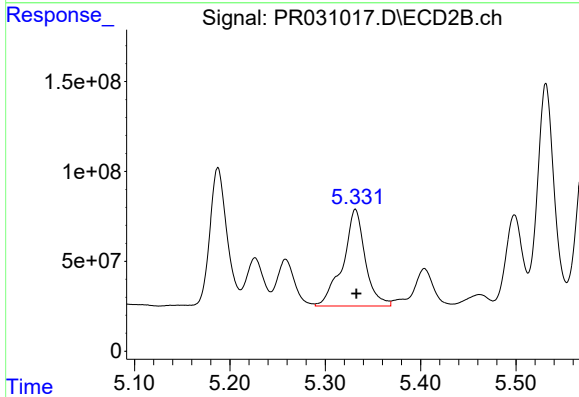
R.T.: 5.018 min  
 Delta R.T.: 0.000 min  
 Response: 755629588  
 Conc: 1491.19 ng/ml



#15 AR-1232-5

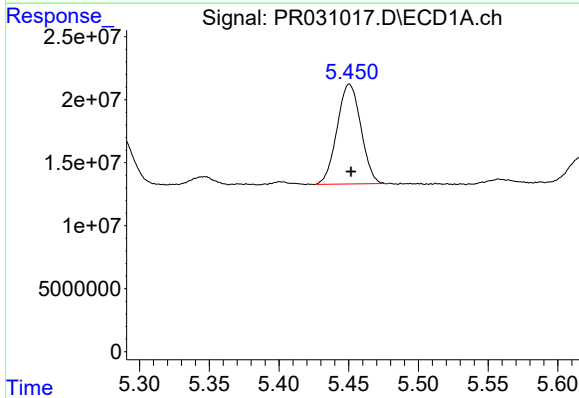
R.T.: 6.192 min  
 Delta R.T.: -0.009 min  
 Response: 399629544  
 Conc: 1731.12 ng/ml

Instrument :  
 ECD\_R  
 ClientSampled :



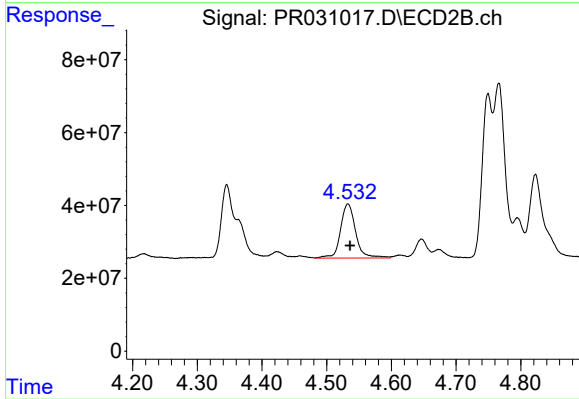
#15 AR-1232-5

R.T.: 5.332 min  
 Delta R.T.: -0.001 min  
 Response: 874708152  
 Conc: 1418.89 ng/ml



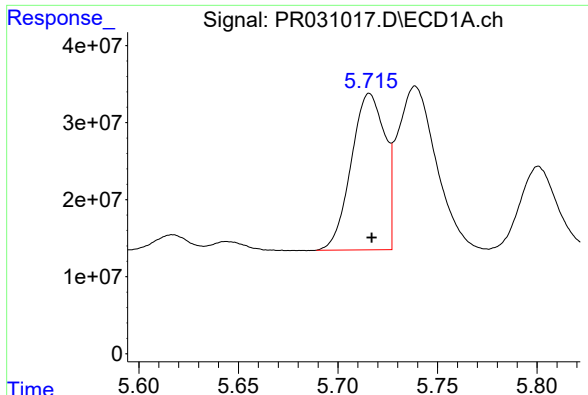
#16 AR-1242-1

R.T.: 5.451 min  
 Delta R.T.: -0.001 min  
 Response: 94143739  
 Conc: 265.52 ng/ml



#16 AR-1242-1

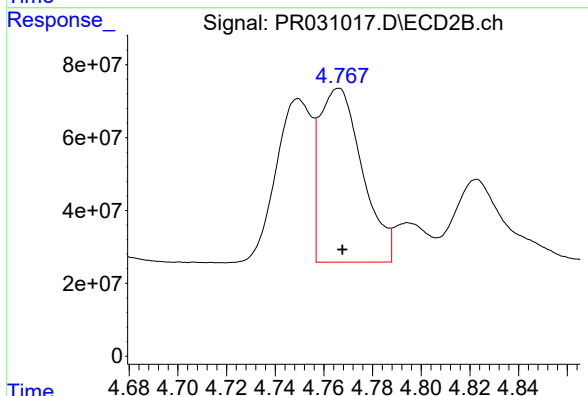
R.T.: 4.533 min  
 Delta R.T.: -0.003 min  
 Response: 241410103  
 Conc: 280.01 ng/ml



#17 AR-1242-2

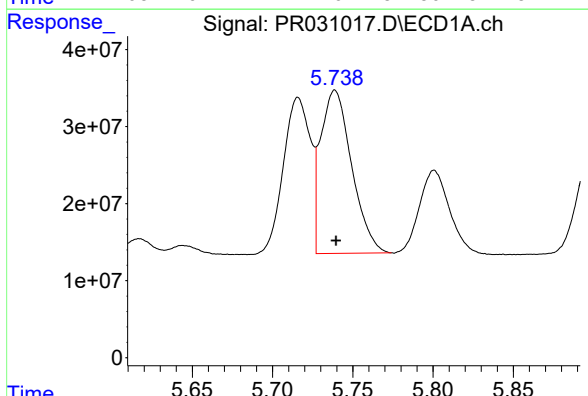
R.T.: 5.716 min  
 Delta R.T.: -0.001 min  
 Response: 238533023  
 Conc: 404.50 ng/ml

Instrument :  
 ECD\_R  
 ClientSampled :



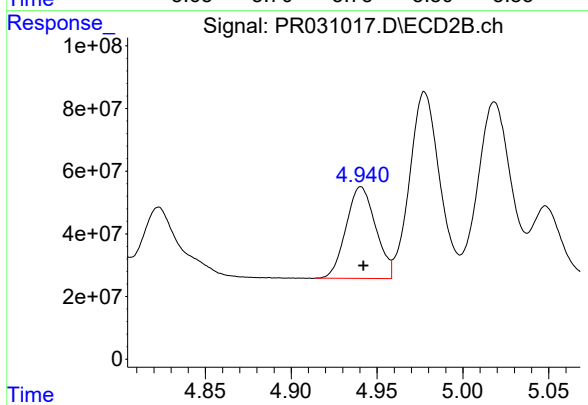
#17 AR-1242-2

R.T.: 4.766 min  
 Delta R.T.: -0.002 min  
 Response: 579997822  
 Conc: 286.24 ng/ml



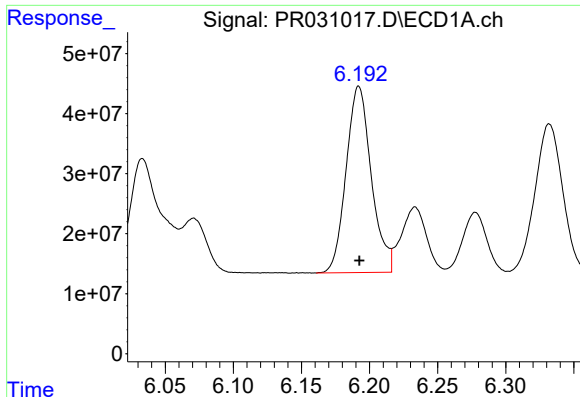
#18 AR-1242-3

R.T.: 5.739 min  
 Delta R.T.: 0.000 min  
 Response: 285290155  
 Conc: 345.28 ng/ml



#18 AR-1242-3

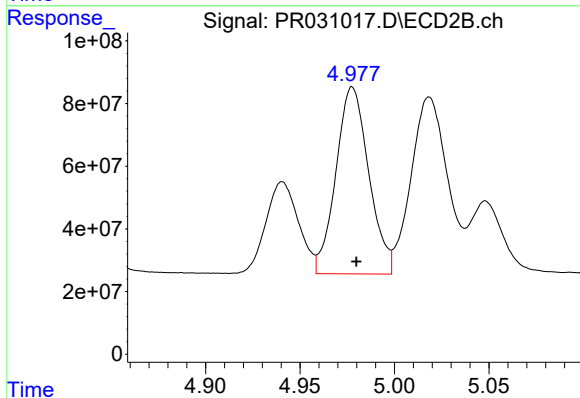
R.T.: 4.941 min  
 Delta R.T.: -0.002 min  
 Response: 350818612  
 Conc: 364.48 ng/ml



#19 AR-1242-4

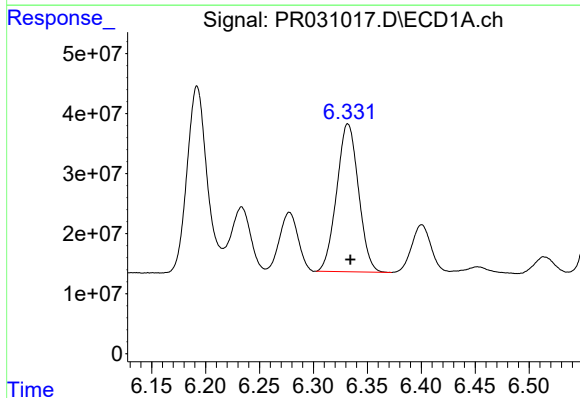
R.T.: 6.192 min  
 Delta R.T.: 0.000 min  
 Response: 399629544  
 Conc: 859.60 ng/ml

Instrument :  
 ECD\_R  
 ClientSampled :



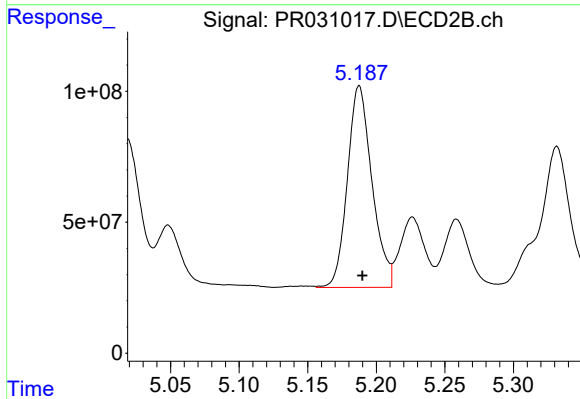
#19 AR-1242-4

R.T.: 4.978 min  
 Delta R.T.: -0.002 min  
 Response: 723394815  
 Conc: 883.88 ng/ml



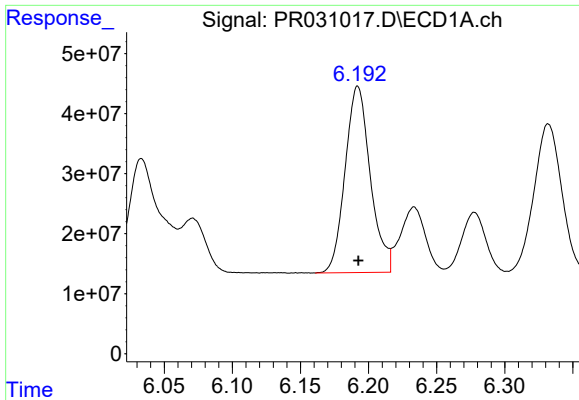
#20 AR-1242-5

R.T.: 6.332 min  
 Delta R.T.: -0.002 min  
 Response: 346120746  
 Conc: 657.88 ng/ml



#20 AR-1242-5

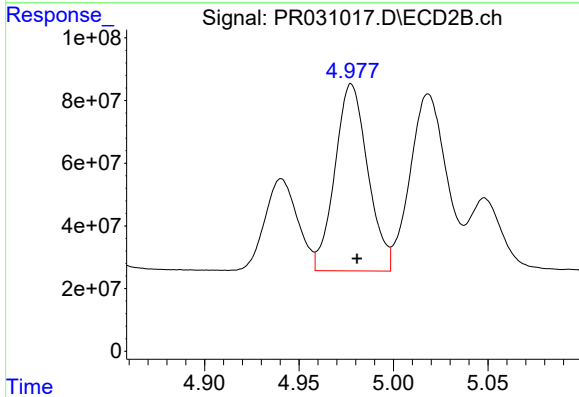
R.T.: 5.188 min  
 Delta R.T.: -0.002 min  
 Response: 959645669  
 Conc: 806.59 ng/ml



#21 AR-1248-1

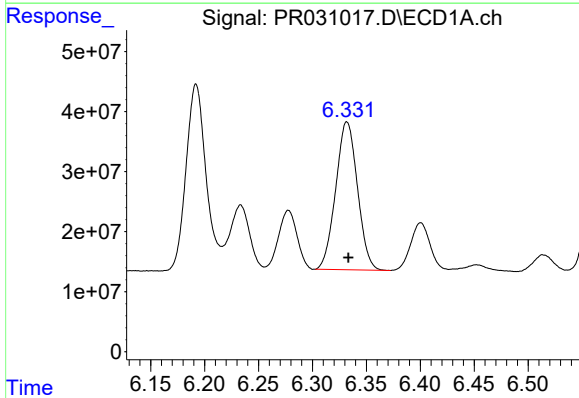
R.T.: 6.192 min  
Delta R.T.: 0.000 min  
Response: 399629544  
Conc: 551.77 ng/ml

Instrument :  
ECD\_R  
ClientSampleId :



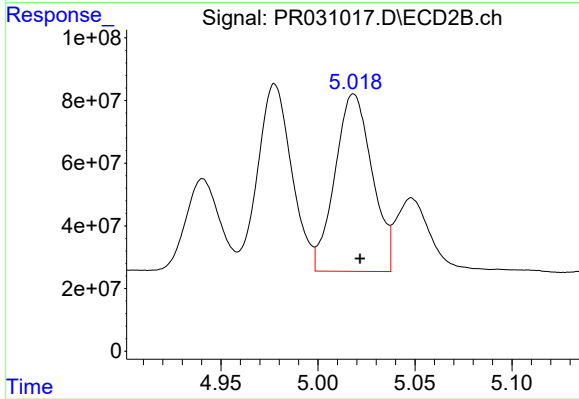
#21 AR-1248-1

R.T.: 4.978 min  
Delta R.T.: -0.003 min  
Response: 723394815  
Conc: 534.23 ng/ml



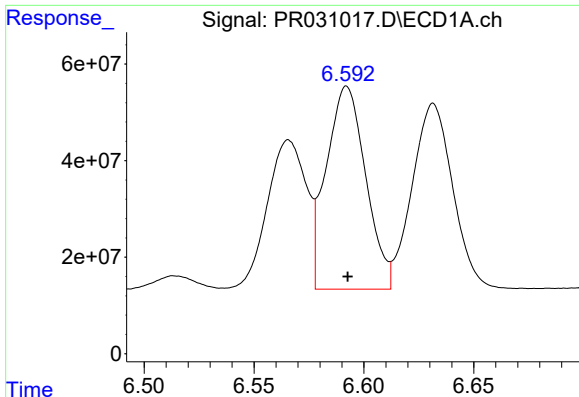
#22 AR-1248-2

R.T.: 6.332 min  
Delta R.T.: -0.001 min  
Response: 346120746  
Conc: 550.26 ng/ml



#22 AR-1248-2

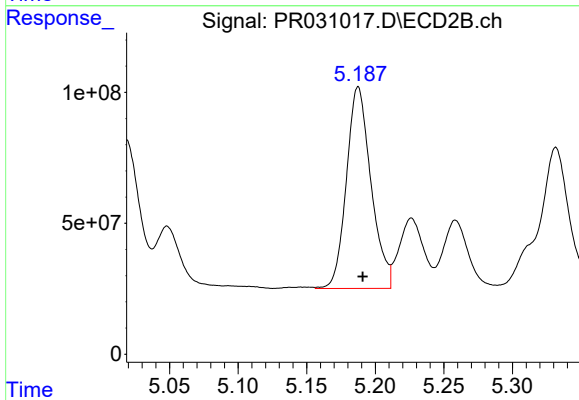
R.T.: 5.018 min  
Delta R.T.: -0.003 min  
Response: 755629588  
Conc: 536.25 ng/ml



#23 AR-1248-3

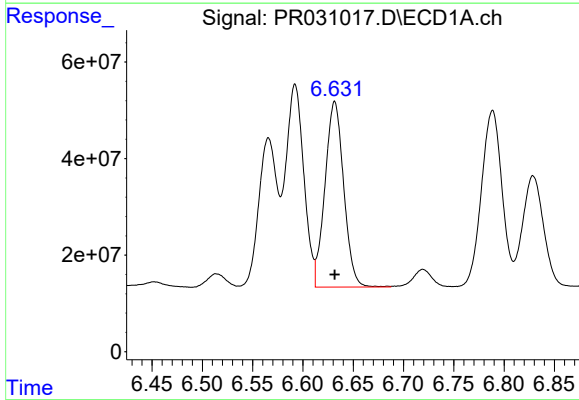
R.T.: 6.592 min  
 Delta R.T.: 0.000 min  
 Response: 525065107  
 Conc: 542.23 ng/ml

Instrument :  
 ECD\_R  
 ClientSampleId :



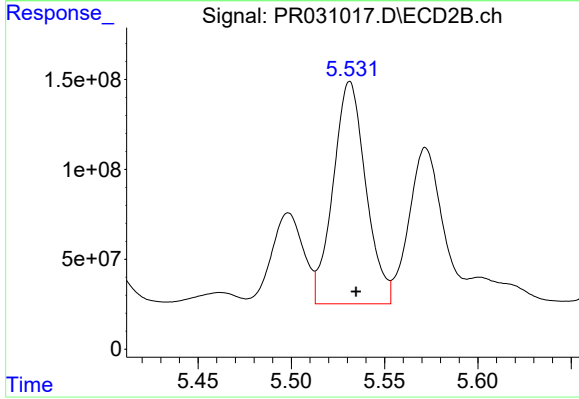
#23 AR-1248-3

R.T.: 5.188 min  
 Delta R.T.: -0.003 min  
 Response: 959645669  
 Conc: 532.90 ng/ml



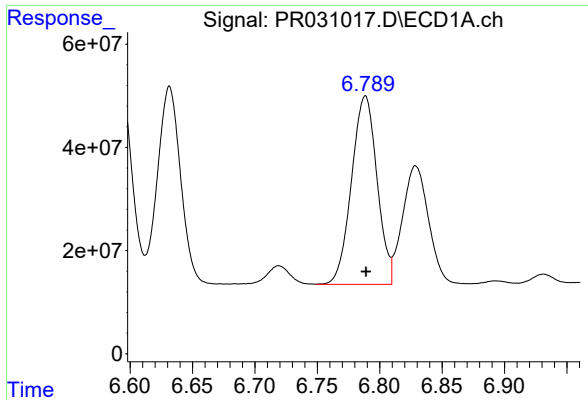
#24 AR-1248-4

R.T.: 6.632 min  
 Delta R.T.: 0.000 min  
 Response: 497690666  
 Conc: 544.38 ng/ml



#24 AR-1248-4

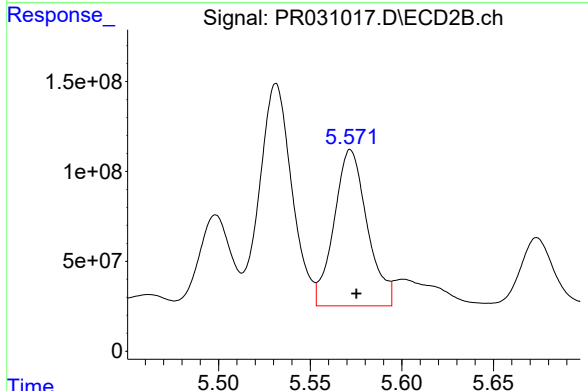
R.T.: 5.531 min  
 Delta R.T.: -0.003 min  
 Response: 1509686860  
 Conc: 533.47 ng/ml



#25 AR-1248-5

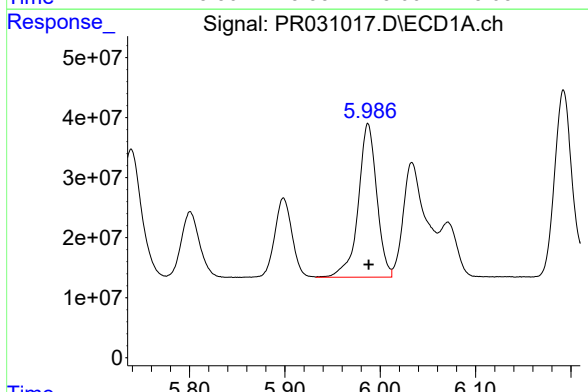
R.T.: 6.789 min  
 Delta R.T.: 0.000 min  
 Response: 519912397  
 Conc: 546.27 ng/ml

Instrument :  
 ECD\_R  
 ClientSampled :



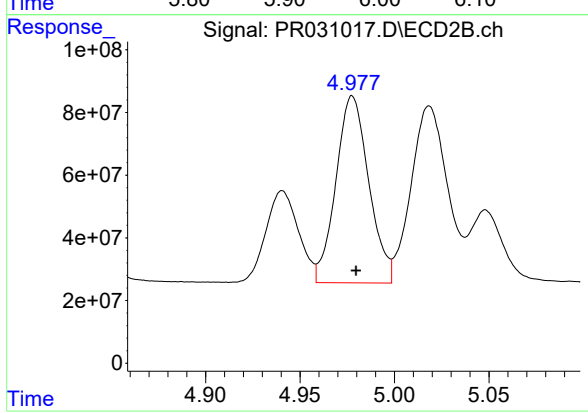
#25 AR-1248-5

R.T.: 5.572 min  
 Delta R.T.: -0.003 min  
 Response: 1096089001  
 Conc: 541.06 ng/ml



#26 AR-1254-1

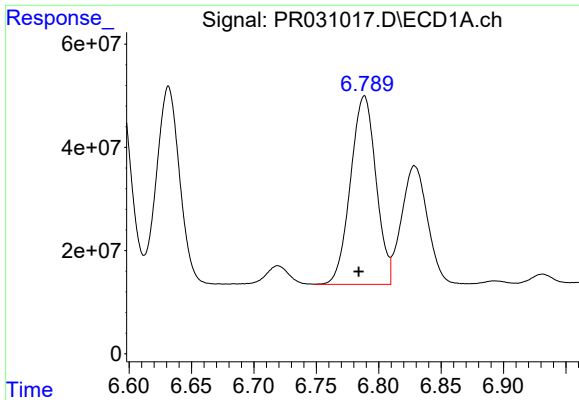
R.T.: 5.987 min  
 Delta R.T.: 0.000 min  
 Response: 343664944  
 Conc: 613.83 ng/ml



#26 AR-1254-1

R.T.: 4.978 min  
 Delta R.T.: -0.002 min  
 Response: 723394815  
 Conc: 563.91 ng/ml

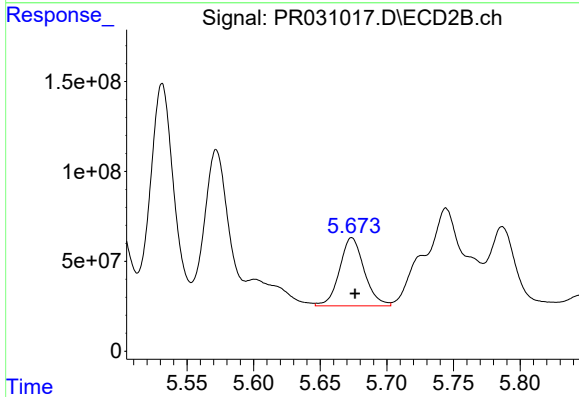




#27 AR-1254-2

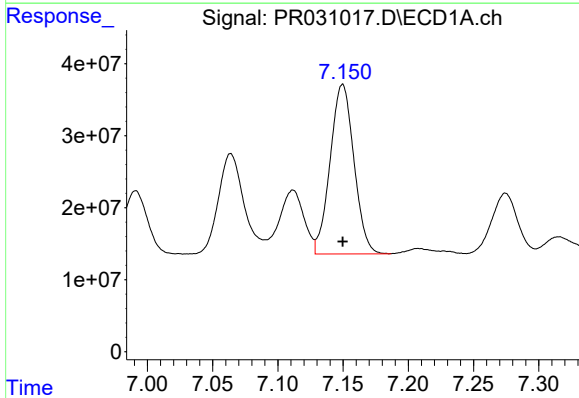
R.T.: 6.789 min  
 Delta R.T.: 0.005 min  
 Response: 519912397  
 Conc: 272.37 ng/ml

Instrument :  
 ECD\_R  
 ClientSampleId :



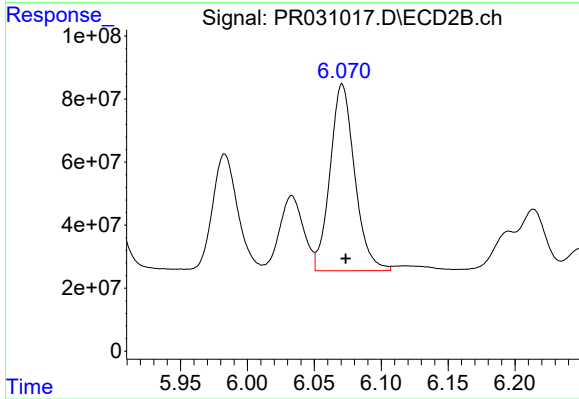
#27 AR-1254-2

R.T.: 5.674 min  
 Delta R.T.: -0.002 min  
 Response: 487306842  
 Conc: 141.35 ng/ml



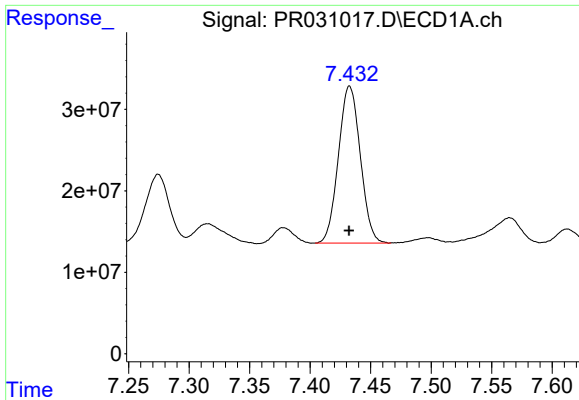
#28 AR-1254-3

R.T.: 7.150 min  
 Delta R.T.: 0.000 min  
 Response: 299842531  
 Conc: 141.23 ng/ml



#28 AR-1254-3

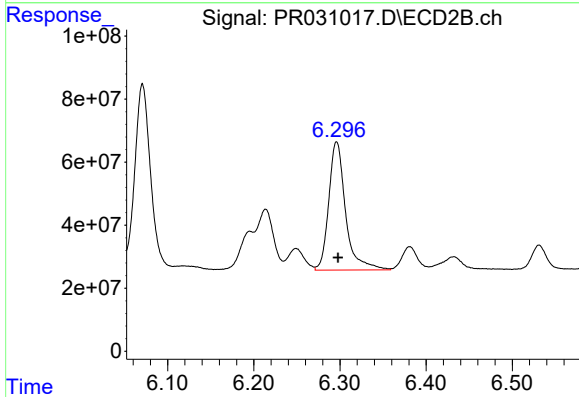
R.T.: 6.071 min  
 Delta R.T.: -0.003 min  
 Response: 759583157  
 Conc: 134.39 ng/ml



#29 AR-1254-4

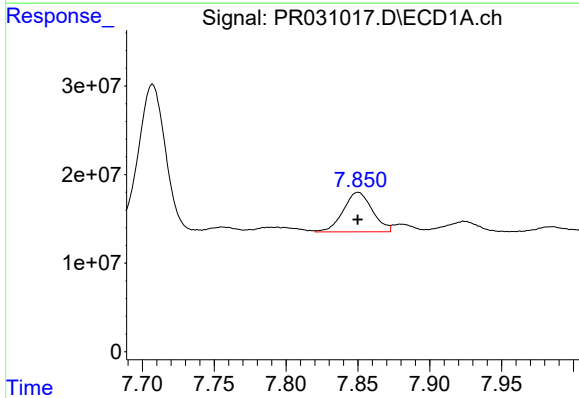
R.T.: 7.433 min  
 Delta R.T.: 0.000 min  
 Response: 242558085  
 Conc: 128.32 ng/ml

Instrument :  
 ECD\_R  
 ClientSampleId :



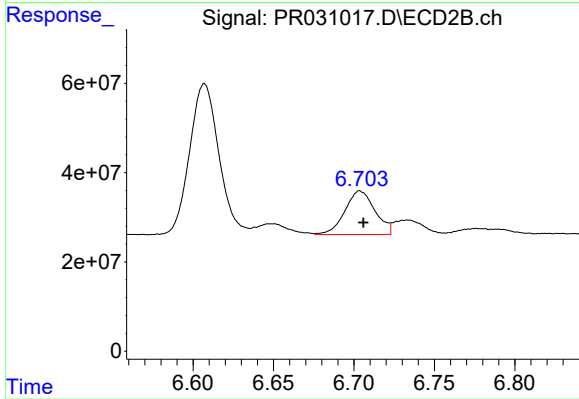
#29 AR-1254-4

R.T.: 6.296 min  
 Delta R.T.: -0.002 min  
 Response: 554345180  
 Conc: 126.54 ng/ml



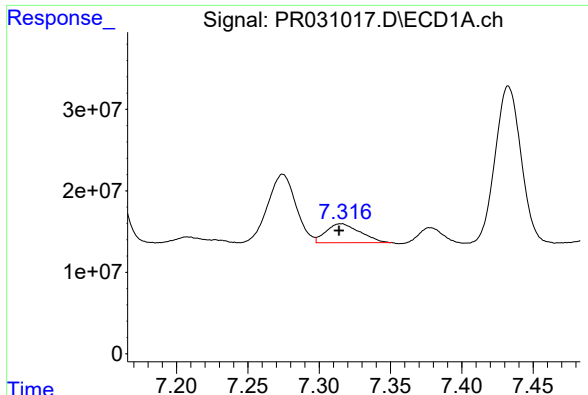
#30 AR-1254-5

R.T.: 7.850 min  
 Delta R.T.: 0.000 min  
 Response: 63051215  
 Conc: 31.72 ng/ml



#30 AR-1254-5

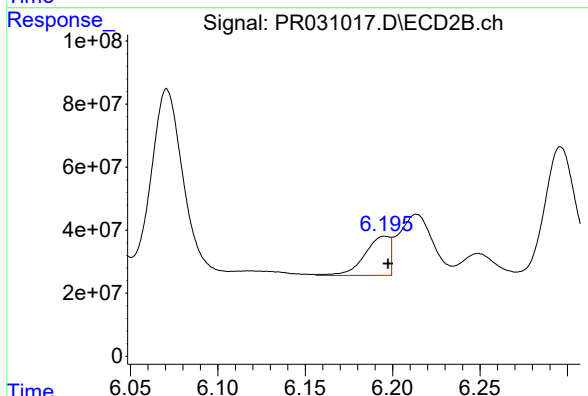
R.T.: 6.704 min  
 Delta R.T.: -0.002 min  
 Response: 127570444  
 Conc: 30.38 ng/ml



#31 AR-1260-1

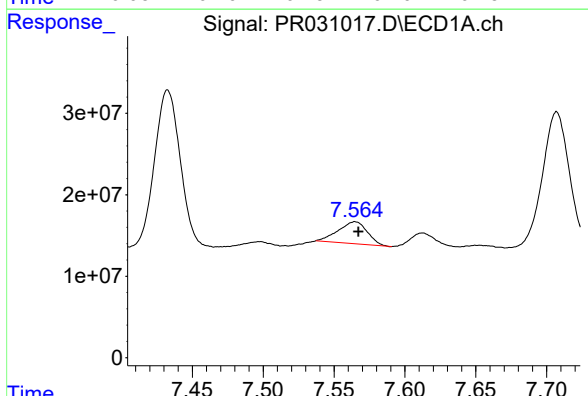
R.T.: 7.315 min  
 Delta R.T.: 0.001 min  
 Response: 38440861  
 Conc: 29.37 ng/ml

Instrument :  
 ECD\_R  
 ClientSampled :



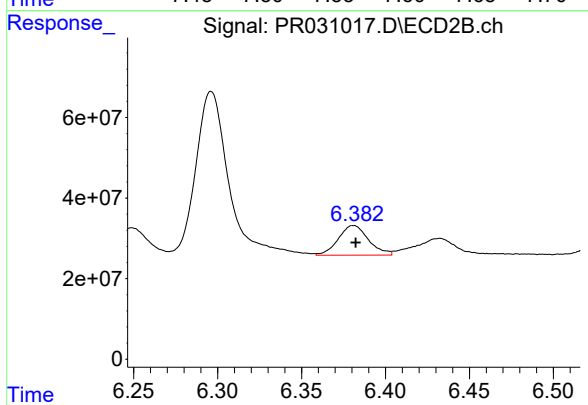
#31 AR-1260-1

R.T.: 6.196 min  
 Delta R.T.: -0.002 min  
 Response: 124445940  
 Conc: 39.15 ng/ml



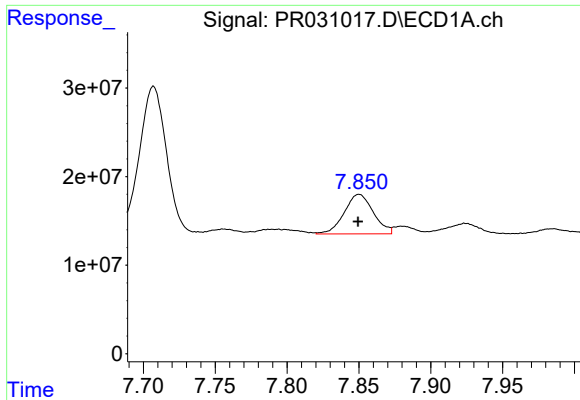
#32 AR-1260-2

R.T.: 7.565 min  
 Delta R.T.: -0.002 min  
 Response: 38564945  
 Conc: 20.15 ng/ml



#32 AR-1260-2

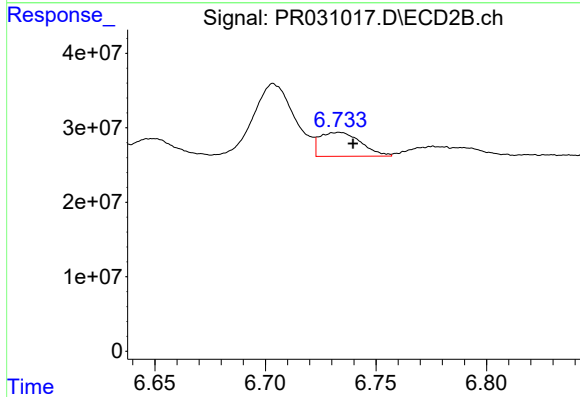
R.T.: 6.381 min  
 Delta R.T.: -0.001 min  
 Response: 92117751  
 Conc: 23.30 ng/ml



#33 AR-1260-3

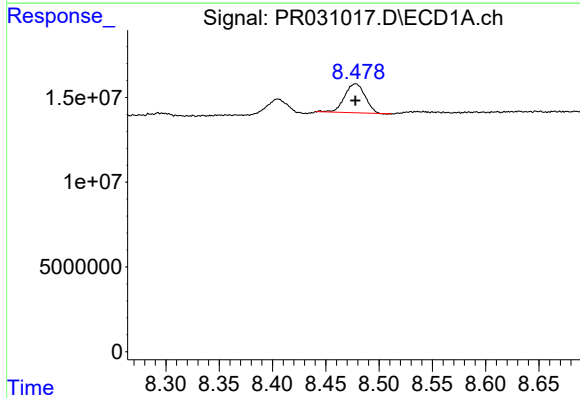
R.T.: 7.850 min  
 Delta R.T.: 0.000 min  
 Response: 63051215  
 Conc: 28.81 ng/ml

Instrument :  
 ECD\_R  
 ClientSampleId :



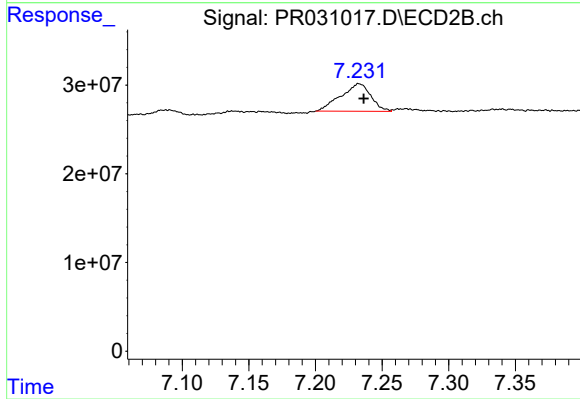
#33 AR-1260-3

R.T.: 6.733 min  
 Delta R.T.: -0.006 min  
 Response: 41518961  
 Conc: 14.66 ng/ml



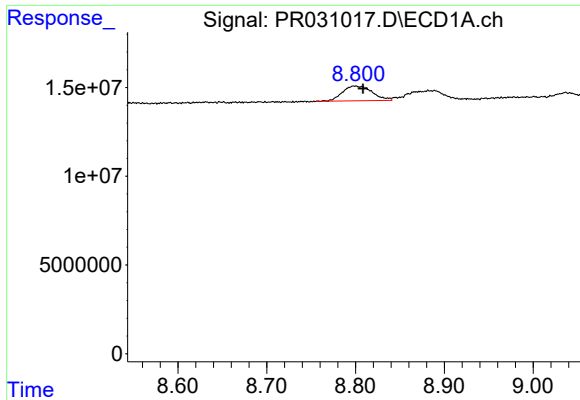
#34 AR-1260-4

R.T.: 8.478 min  
 Delta R.T.: 0.000 min  
 Response: 22741768  
 Conc: 6.07 ng/ml



#34 AR-1260-4

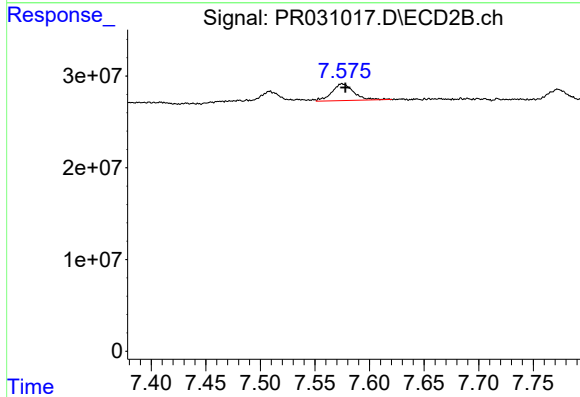
R.T.: 7.233 min  
 Delta R.T.: -0.003 min  
 Response: 48789145  
 Conc: 13.30 ng/ml



#35 AR-1260-5

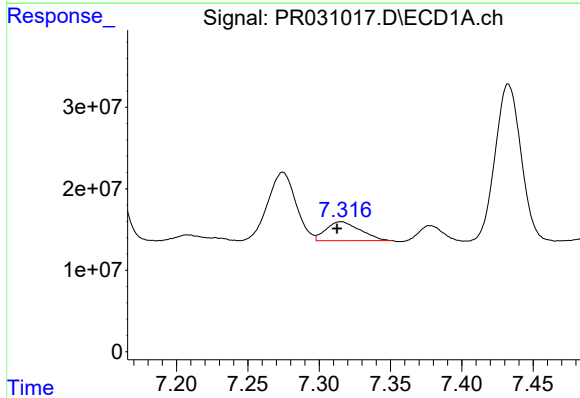
R.T.: 8.800 min  
 Delta R.T.: -0.009 min  
 Response: 19283003  
 Conc: 8.16 ng/ml

Instrument :  
 ECD\_R  
 ClientSampleId :



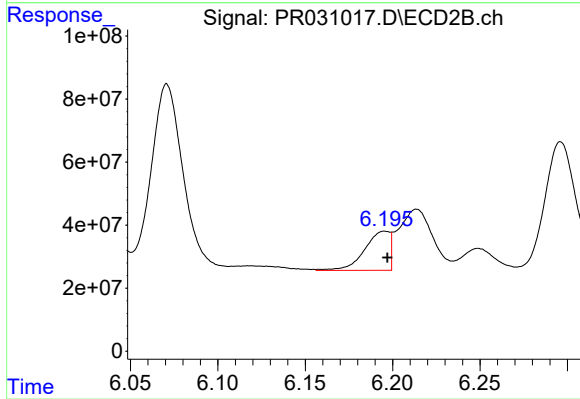
#35 AR-1260-5

R.T.: 7.575 min  
 Delta R.T.: -0.003 min  
 Response: 25328395  
 Conc: 11.94 ng/ml



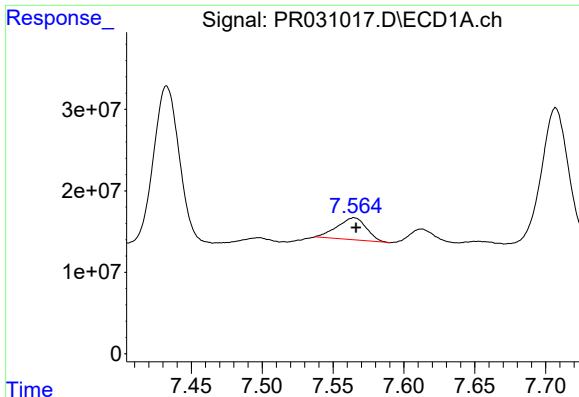
#36 AR-1262-1

R.T.: 7.315 min  
 Delta R.T.: 0.003 min  
 Response: 38440861  
 Conc: 31.16 ng/ml



#36 AR-1262-1

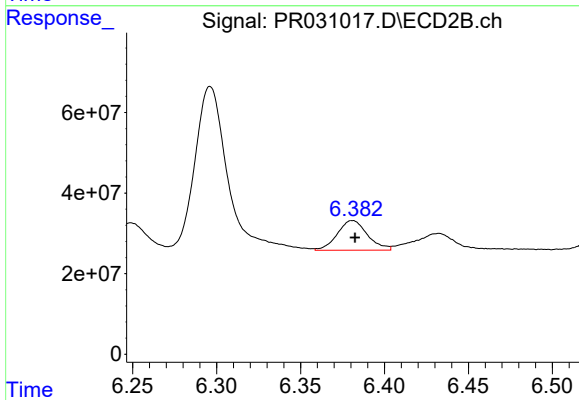
R.T.: 6.196 min  
 Delta R.T.: -0.001 min  
 Response: 124445940  
 Conc: 43.60 ng/ml



#37 AR-1262-2

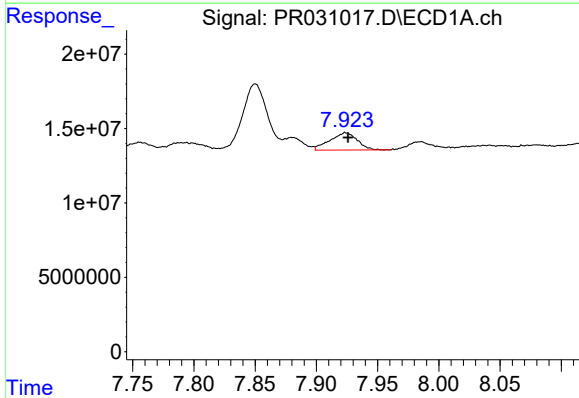
R.T.: 7.565 min  
 Delta R.T.: -0.001 min  
 Response: 38564945  
 Conc: 22.11 ng/ml

Instrument :  
 ECD\_R  
 ClientSampled :



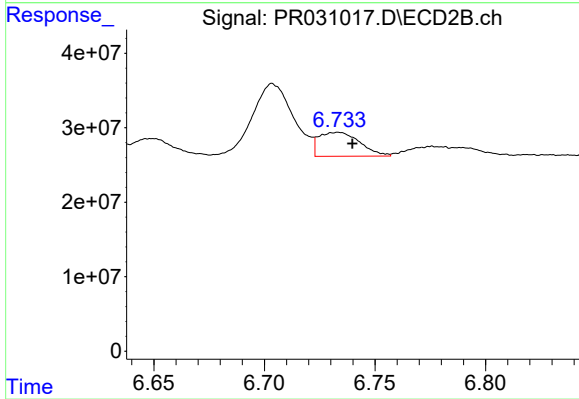
#37 AR-1262-2

R.T.: 6.381 min  
 Delta R.T.: -0.001 min  
 Response: 92117751  
 Conc: 26.60 ng/ml



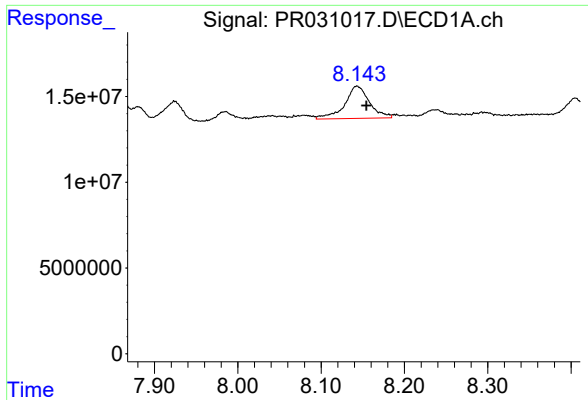
#38 AR-1262-3

R.T.: 7.924 min  
 Delta R.T.: -0.002 min  
 Response: 18192104  
 Conc: 6.90 ng/ml



#38 AR-1262-3

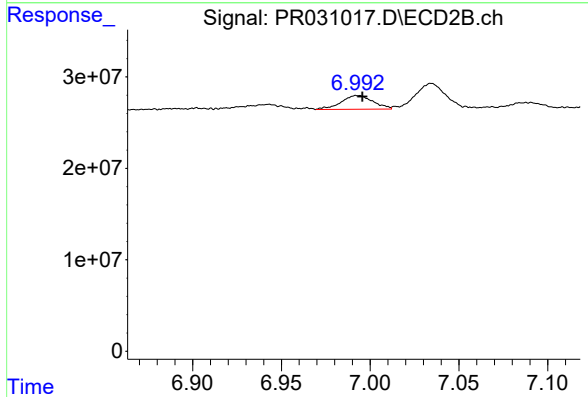
R.T.: 6.733 min  
 Delta R.T.: -0.006 min  
 Response: 41518961  
 Conc: 9.91 ng/ml



#39 AR-1262-4

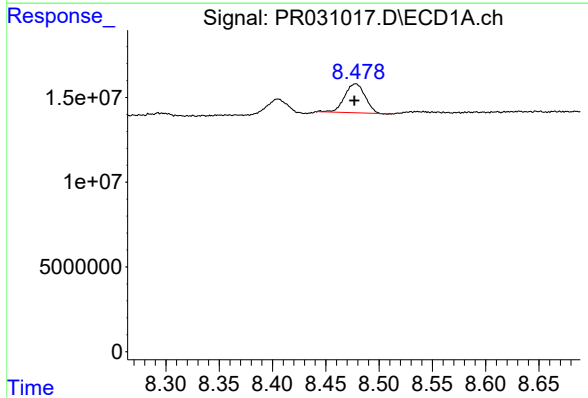
R.T.: 8.143 min  
 Delta R.T.: -0.012 min  
 Response: 38743999  
 Conc: 18.29 ng/ml

Instrument :  
 ECD\_R  
 ClientSampleId :



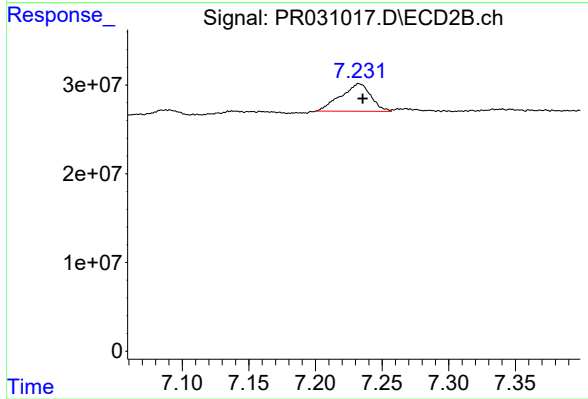
#39 AR-1262-4

R.T.: 6.993 min  
 Delta R.T.: -0.003 min  
 Response: 18786619  
 Conc: 6.89 ng/ml



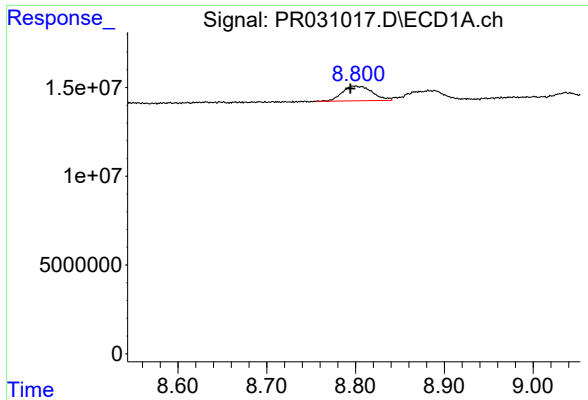
#40 AR-1262-5

R.T.: 8.478 min  
 Delta R.T.: 0.001 min  
 Response: 22741768  
 Conc: 4.66 ng/ml



#40 AR-1262-5

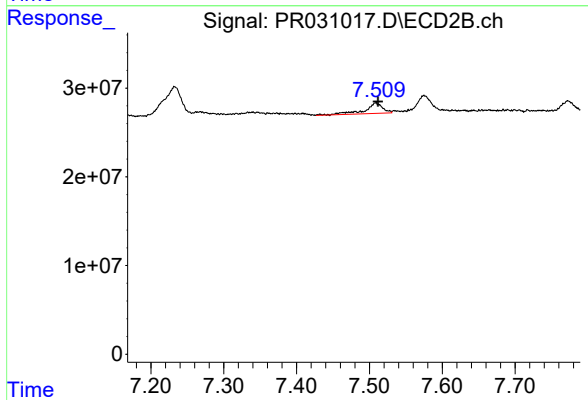
R.T.: 7.233 min  
 Delta R.T.: -0.003 min  
 Response: 48789145  
 Conc: 10.66 ng/ml



#41 AR-1268-1

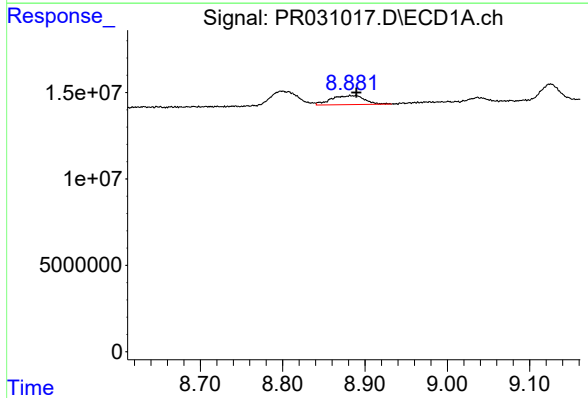
R.T.: 8.800 min  
 Delta R.T.: 0.005 min  
 Response: 19283003  
 Conc: 3.46 ng/ml

Instrument :  
 ECD\_R  
 ClientSampled :



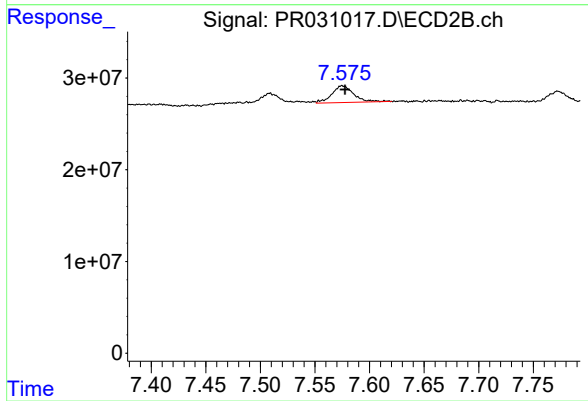
#41 AR-1268-1

R.T.: 7.509 min  
 Delta R.T.: -0.004 min  
 Response: 20080068  
 Conc: 5.11 ng/ml



#42 AR-1268-2

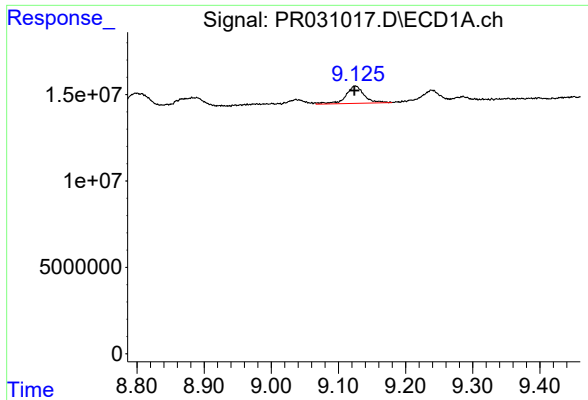
R.T.: 8.886 min  
 Delta R.T.: -0.004 min  
 Response: 14770483  
 Conc: 3.07 ng/ml



#42 AR-1268-2

R.T.: 7.575 min  
 Delta R.T.: -0.002 min  
 Response: 25328395  
 Conc: 7.61 ng/ml

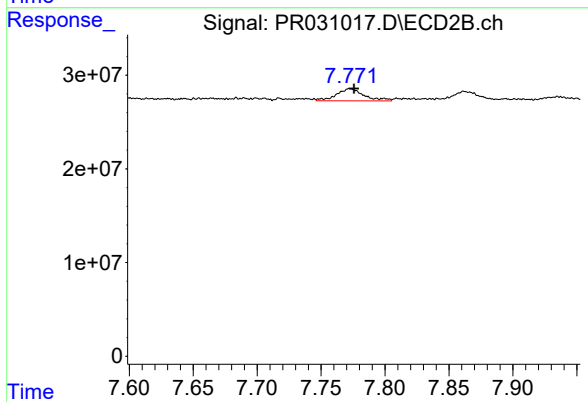




#43 AR-1268-3

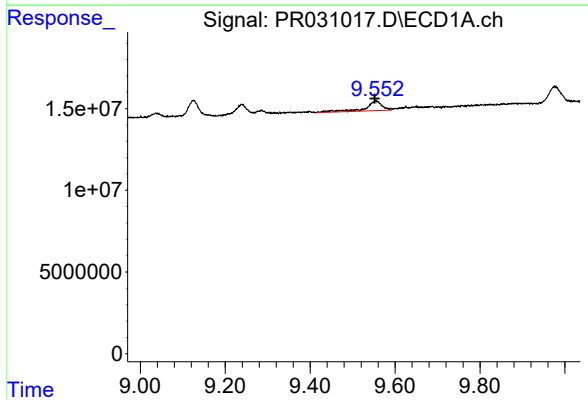
R.T.: 9.125 min  
 Delta R.T.: 0.001 min  
 Response: 18987137  
 Conc: 4.38 ng/ml

Instrument :  
 ECD\_R  
 ClientSampled :



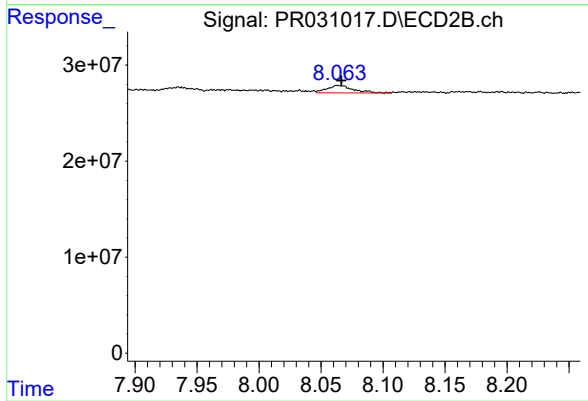
#43 AR-1268-3

R.T.: 7.772 min  
 Delta R.T.: -0.003 min  
 Response: 19468675  
 Conc: 7.26 ng/ml



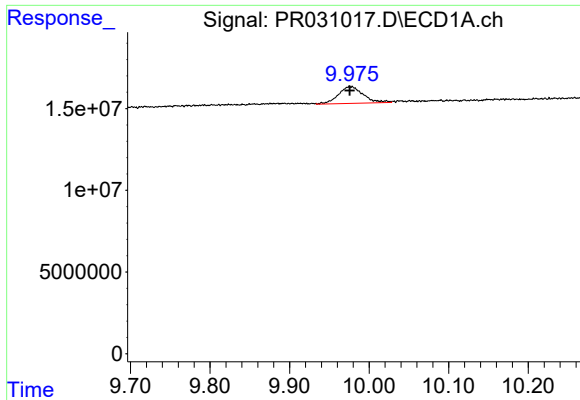
#44 AR-1268-4

R.T.: 9.555 min  
 Delta R.T.: 0.002 min  
 Response: 16459183  
 Conc: 8.54 ng/ml



#44 AR-1268-4

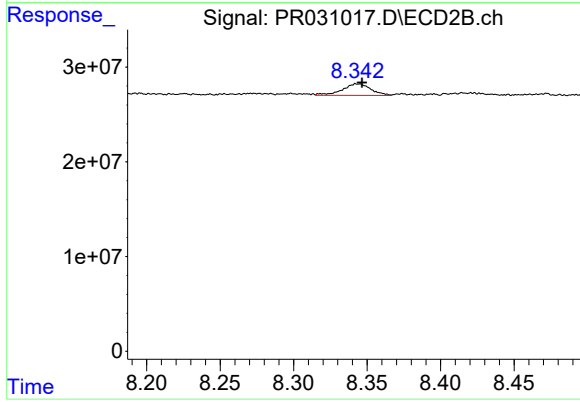
R.T.: 8.064 min  
 Delta R.T.: -0.003 min  
 Response: 11527064  
 Conc: 9.94 ng/ml



#45 AR-1268-5

R.T.: 9.976 min  
Delta R.T.: 0.000 min  
Response: 22567244  
Conc: 1.77 ng/ml

Instrument :  
ECD\_R  
ClientSampleId :



#45 AR-1268-5

R.T.: 8.344 min  
Delta R.T.: -0.003 min  
Response: 16294460  
Conc: 2.33 ng/ml