

Data Path : Z:\pestpcbsrv\HPCHEM1\ECD_R\Data\PR081019\
 Data File : PR040250.D
 Signal(s) : Signal #1: ECD1A.ch Signal #2: ECD2B.ch
 Acq On : 09 Aug 2019 17:01
 Operator : SM\AJ
 Sample : AR1254ICC500
 Misc :
 ALS Vial : 12 Sample Multiplier: 1

Instrument :
 ECD_R
 ClientSampleId :
 AR1254ICC500

Integration File signal 1: autoint1.e
 Integration File signal 2: autoint2.e
 Quant Time: Aug 10 07:22:41 2019
 Quant Method : Z:\pestpcbsrv\HPCHEM1\ECD_R\Method\PR081019.M
 Quant Title : GC EXTRACTABLES
 QLast Update : Sat Aug 10 07:22:25 2019
 Response via : Initial Calibration
 Integrator: ChemStation

Volume Inj. : 2 µl
 Signal #1 Phase : ZB-MR1 Signal #2 Phase: ZB-MR2
 Signal #1 Info : 30Mx0.32mmx 0.50µ Signal #2 Info : 30M x 0.32mm x 0.25µm

Compound	RT#1	RT#2	Resp#1	Resp#2	ng/ml	ng/ml

System Monitoring Compounds						
1) SA Tetrachlo...	3.744	4.588	142.1E6	637.3E6	50.000	50.000
2) SA Decachlor...	8.676	10.311	103.8E6	401.2E6	50.000	50.000
Target Compounds						
26) L6 AR-1254-1	5.597	6.586	79000791	204.7E6	500.000	500.000
27) L6 AR-1254-2	5.741	6.801	66634111	323.1E6	500.000	500.000
28) L6 AR-1254-3	6.138	7.165	110.1E6	335.1E6	500.000	500.000
29) L6 AR-1254-4	6.363	7.448	81126852	246.2E6	500.000	500.000
30) L6 AR-1254-5	6.774	7.862	93000772	254.6E6	500.000	500.000

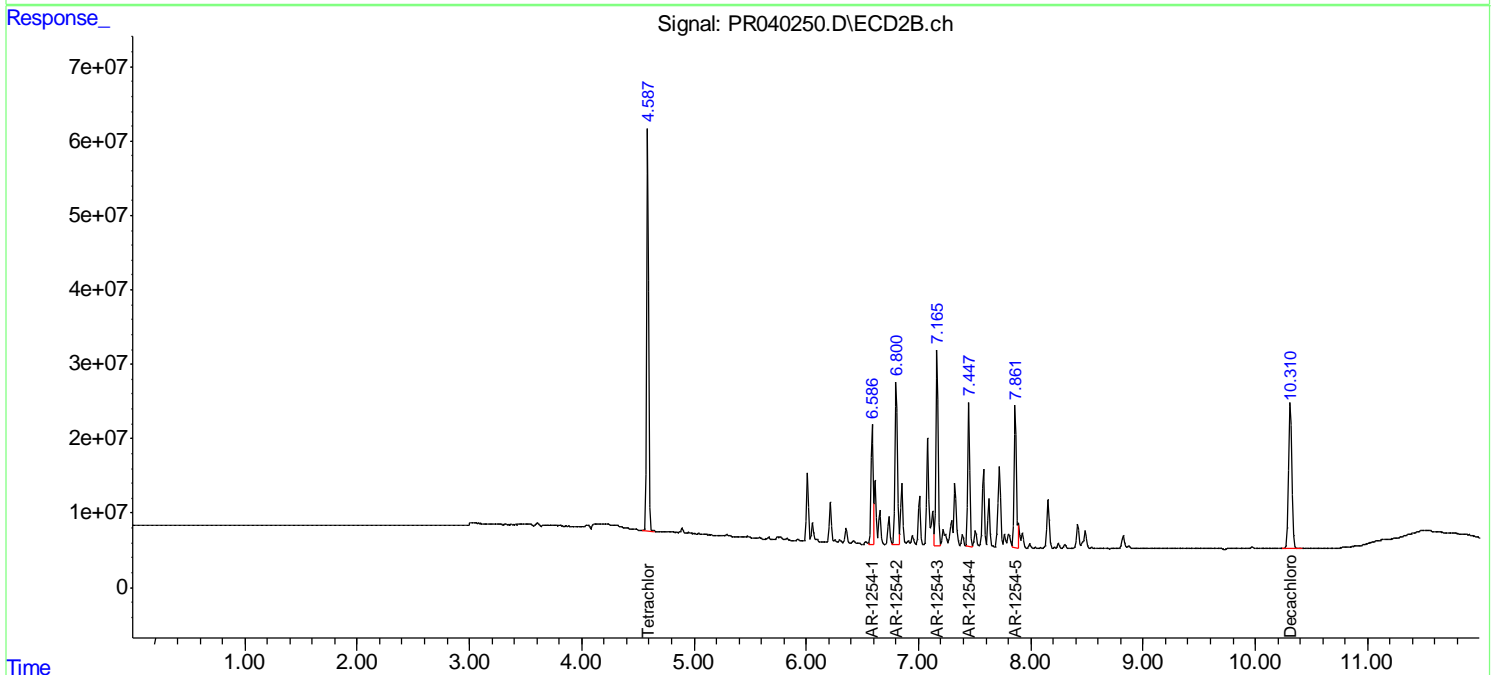
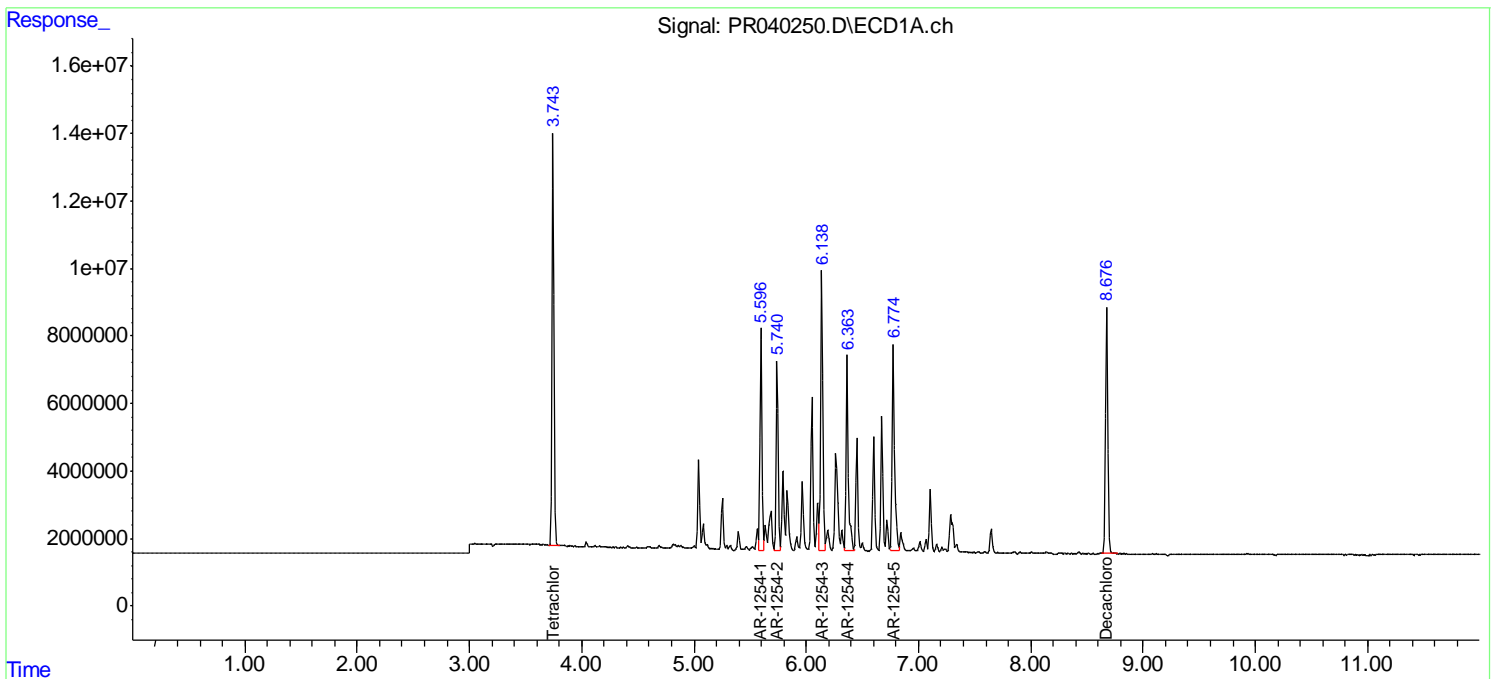
(f)=RT Delta > 1/2 Window (#)=Amounts differ by > 25% (m)=manual int.

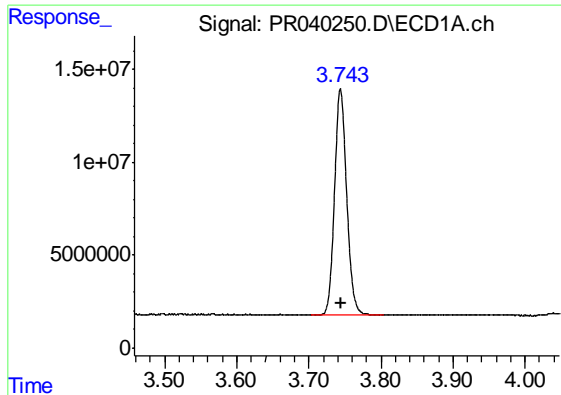
Data Path : Z:\pestpcbsrv\HPCHEM1\ECD_R\Data\PR081019\
 Data File : PR040250.D
 Signal(s) : Signal #1: ECD1A.ch Signal #2: ECD2B.ch
 Acq On : 09 Aug 2019 17:01
 Operator : SM\AJ
 Sample : AR1254ICC500
 Misc :
 ALS Vial : 12 Sample Multiplier: 1

Instrument :
 ECD_R
 ClientSampled :
 AR1254ICC500

Integration File signal 1: autoint1.e
 Integration File signal 2: autoint2.e
 Quant Time: Aug 10 07:22:41 2019
 Quant Method : Z:\pestpcbsrv\HPCHEM1\ECD_R\Method\PR081019.M
 Quant Title : GC EXTRACTABLES
 QLast Update : Sat Aug 10 07:22:25 2019
 Response via : Initial Calibration
 Integrator: ChemStation

Volume Inj. : 2 µl
 Signal #1 Phase : ZB-MR1 Signal #2 Phase: ZB-MR2
 Signal #1 Info : 30Mx0.32mmx 0.50µ Signal #2 Info : 30M x 0.32mm x 0.25µm

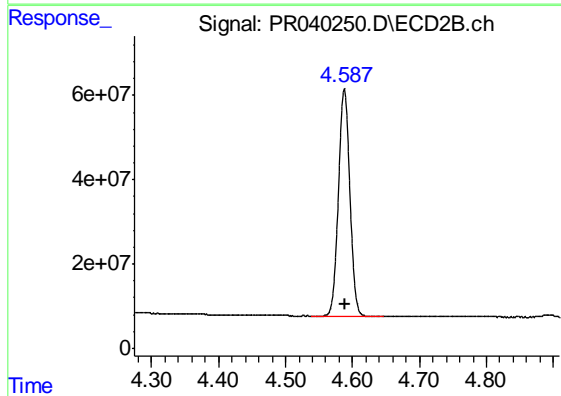




#1 Tetrachloro-m-xylene

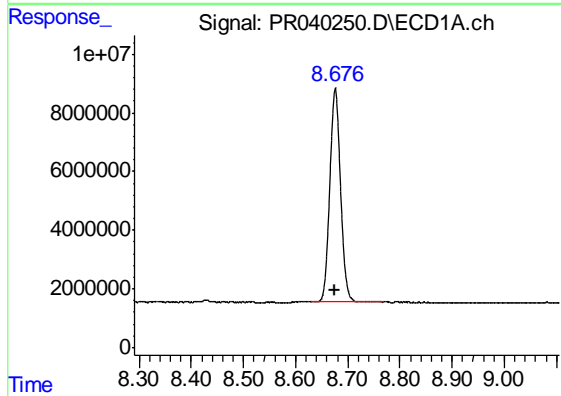
R.T.: 3.744 min
Delta R.T.: 0.000 min
Response: 142106697
Conc: 50.00 ng/ml

Instrument :
ECD_R
ClientSampleId :
AR1254ICC500



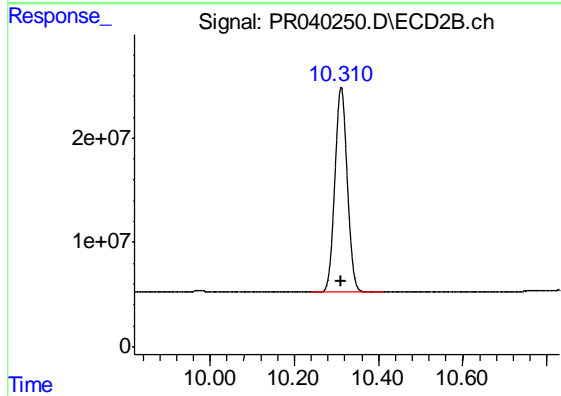
#1 Tetrachloro-m-xylene

R.T.: 4.588 min
Delta R.T.: 0.000 min
Response: 637336045
Conc: 50.00 ng/ml



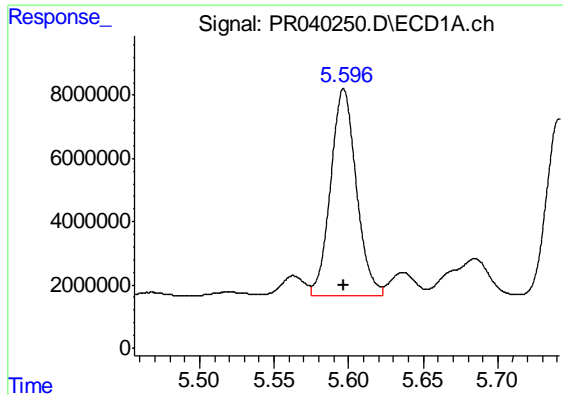
#2 Decachlorobiphenyl

R.T.: 8.676 min
Delta R.T.: 0.000 min
Response: 103848146
Conc: 50.00 ng/ml



#2 Decachlorobiphenyl

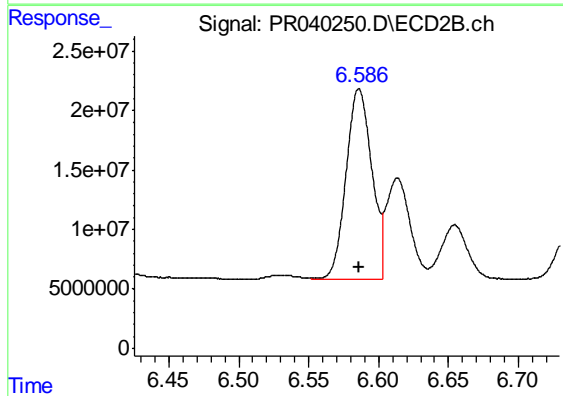
R.T.: 10.311 min
Delta R.T.: 0.000 min
Response: 401222748
Conc: 50.00 ng/ml



#26 AR-1254-1

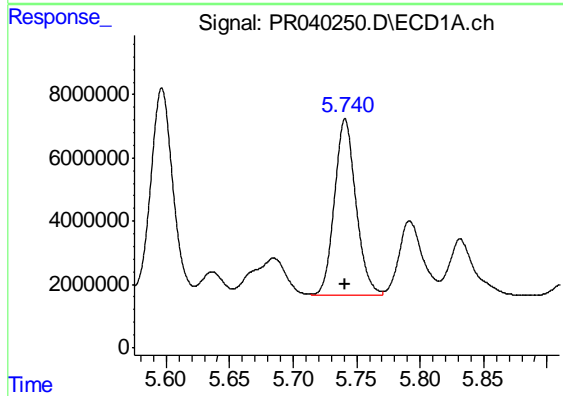
R.T.: 5.597 min
Delta R.T.: 0.000 min
Response: 79000791
Conc: 500.00 ng/ml

Instrument :
ECD_R
ClientSampleId :
AR1254ICC500



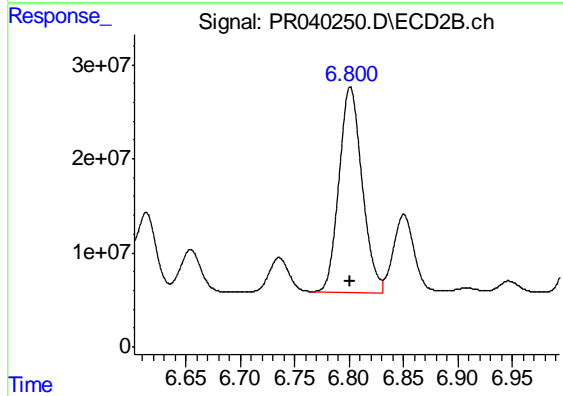
#26 AR-1254-1

R.T.: 6.586 min
Delta R.T.: 0.000 min
Response: 204688903
Conc: 500.00 ng/ml



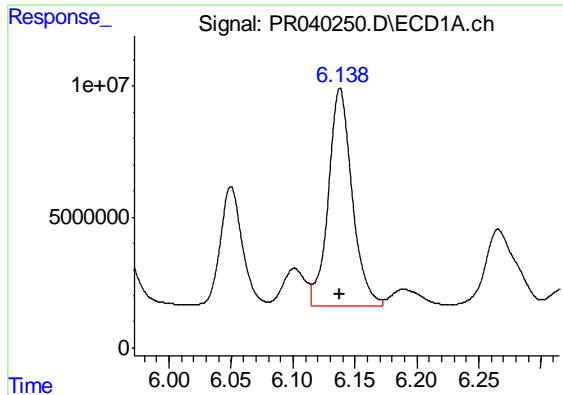
#27 AR-1254-2

R.T.: 5.741 min
Delta R.T.: 0.000 min
Response: 66634111
Conc: 500.00 ng/ml



#27 AR-1254-2

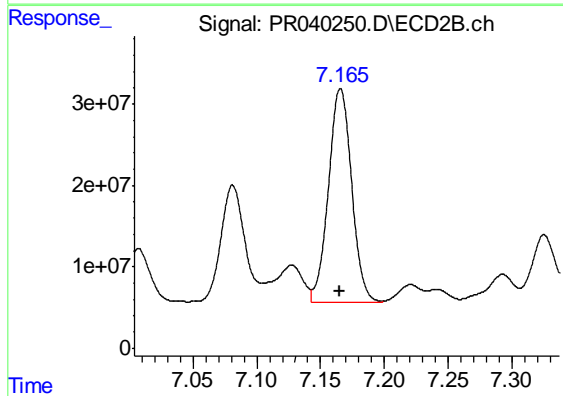
R.T.: 6.801 min
Delta R.T.: 0.000 min
Response: 323057073
Conc: 500.00 ng/ml



#28 AR-1254-3

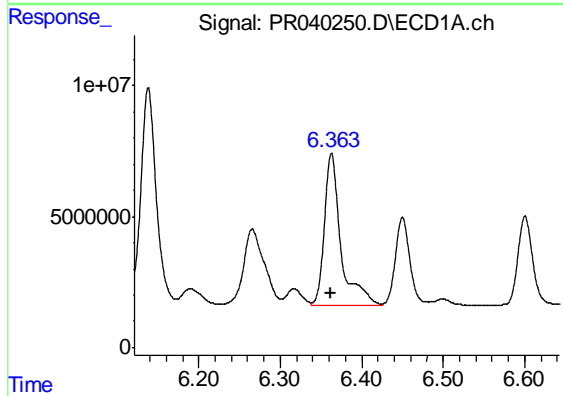
R.T.: 6.138 min
Delta R.T.: 0.000 min
Response: 110069747
Conc: 500.00 ng/ml

Instrument :
ECD_R
ClientSampleId :
AR1254ICC500



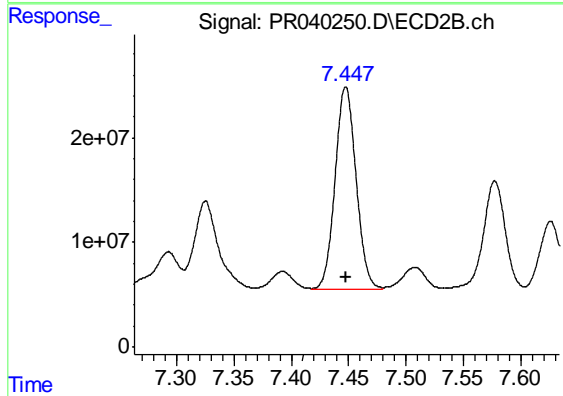
#28 AR-1254-3

R.T.: 7.165 min
Delta R.T.: 0.000 min
Response: 335068863
Conc: 500.00 ng/ml



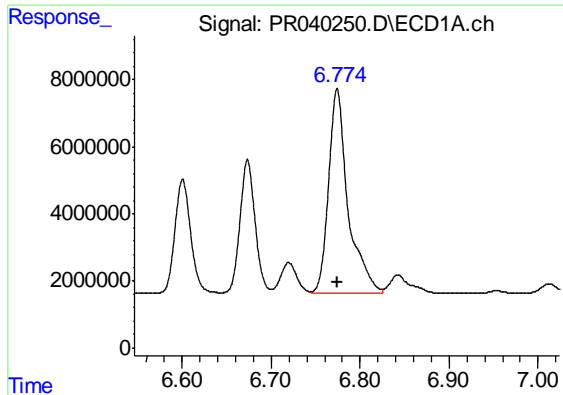
#29 AR-1254-4

R.T.: 6.363 min
Delta R.T.: 0.000 min
Response: 81126852
Conc: 500.00 ng/ml



#29 AR-1254-4

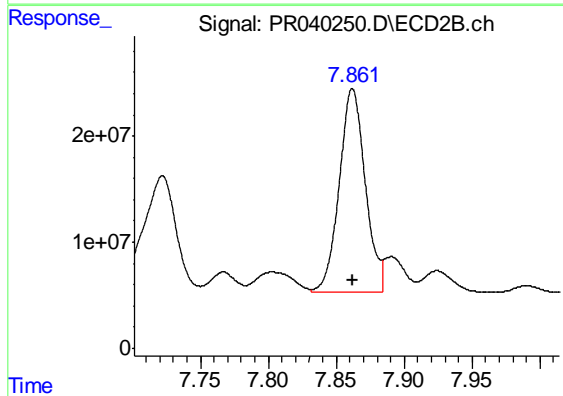
R.T.: 7.448 min
Delta R.T.: 0.000 min
Response: 246237133
Conc: 500.00 ng/ml



#30 AR-1254-5

R.T.: 6.774 min
Delta R.T.: 0.000 min
Response: 93000772
Conc: 500.00 ng/ml

Instrument :
ECD_R
ClientSampleId :
AR1254ICC500



#30 AR-1254-5

R.T.: 7.862 min
Delta R.T.: 0.000 min
Response: 254567593
Conc: 500.00 ng/ml