

Data Path : Z:\pestpcbsrv\HPCHEM1\ECD\_R\Data\PR082019\  
 Data File : PR040462.D  
 Signal(s) : Signal #1: ECD1A.ch Signal #2: ECD2B.ch  
 Acq On : 20 Aug 2019 12:43  
 Operator : SM\AJ  
 Sample : K3591-07  
 Misc : AR1262 LOD 40 PPB  
 ALS Vial : 19 Sample Multiplier: 1

Instrument :  
 ECD\_R  
 ClientSampleId :

Integration File signal 1: autoint1.e  
 Integration File signal 2: autoint2.e  
 Quant Time: Aug 21 00:19:38 2019  
 Quant Method : Z:\pestpcbsrv\HPCHEM1\ECD\_R\Method\PR081919.M  
 Quant Title : GC EXTRACTABLES  
 QLast Update : Tue Aug 20 09:47:16 2019  
 Response via : Initial Calibration  
 Integrator: ChemStation

Volume Inj. : 2 µl  
 Signal #1 Phase : ZB-MR1 Signal #2 Phase: ZB-MR2  
 Signal #1 Info : 30Mx0.32mmx 0.50µ Signal #2 Info : 30M x 0.32mm x 0.25µm

	Compound	RT#1	RT#2	Resp#1	Resp#2	ng/ml	ng/ml
-----							
System Monitoring Compounds							
1)	SA Tetrachlo...	3.731	4.574	24360722	113.2E6	13.931	13.525
2)	SA Decachlor...	8.653	10.283	58985427	246.8E6	21.392	18.944
Target Compounds							
9)	L2 AR-1221-2	0.000	4.880	0	1654815	N.D.	25.560 #
10)	L2 AR-1221-3	0.000	4.880	0	1654815	N.D.	7.883 #
11)	L3 AR-1232-1	0.000	4.880	0	1654815	N.D.	6.713 #
20)	L4 AR-1242-5	0.000	6.571	0	1972796	N.D.	8.448 #
24)	L5 AR-1248-4	0.000	6.571	0	1972796	N.D.	5.333 #
25)	L5 AR-1248-5	0.000	6.571	0	1972796	N.D.	5.621 #
26)	L6 AR-1254-1	0.000	6.571	0	1972796	N.D.	5.698 #
27)	L6 AR-1254-2	0.000	6.782	0	2432055	N.D.	4.432 #
28)	L6 AR-1254-3	6.137	7.148	1877071	2311356	9.830	3.716 #
29)	L6 AR-1254-4	0.000	7.431	0	1133260	N.D.	2.357 #
30)	L6 AR-1254-5	6.756	7.843	3742491	16112197	21.348	30.767 #
31)	L7 AR-1260-1	6.249	7.308	3904420	14363391	32.987	33.386
32)	L7 AR-1260-2	6.434	7.561	5103752	16011146	34.363	29.733
33)	L7 AR-1260-3	6.587	7.916	4753006	24345580	35.213	56.496 #
34)	L7 AR-1260-4	7.049	8.145	7136102	23454785	59.884	46.478
35)	L7 AR-1260-5	7.288	8.467	14288190	49760960	47.512	43.541
36)	L8 AR-1262-1	6.846	7.916	2910538	24345580	37.718	36.192
37)	L8 AR-1262-2	7.288	8.467	14288190	49760960	37.117	36.425
38)	L8 AR-1262-3	7.566	8.780	6014558	39780208	41.725	43.415
39)	L8 AR-1262-4	7.630	8.872	11481600	30291091	40.729	43.152
40)	L8 AR-1262-5	8.119	9.534	5428813	21753153	40.607	40.253
41)	L9 AR-1268-1	7.566	8.780	6014558	39780208	15.423	25.953 #
42)	L9 AR-1268-2	7.630	8.872	11481600	30291091	31.946	20.718 #
43)	L9 AR-1268-3	7.832	9.101	1031562	4384329	3.531	3.549
44)	L9 AR-1268-4	8.119	9.534	5428813	21753153	39.279	37.915
45)	L9 AR-1268-5	8.405	9.947	2303589	11118095	2.198	2.392

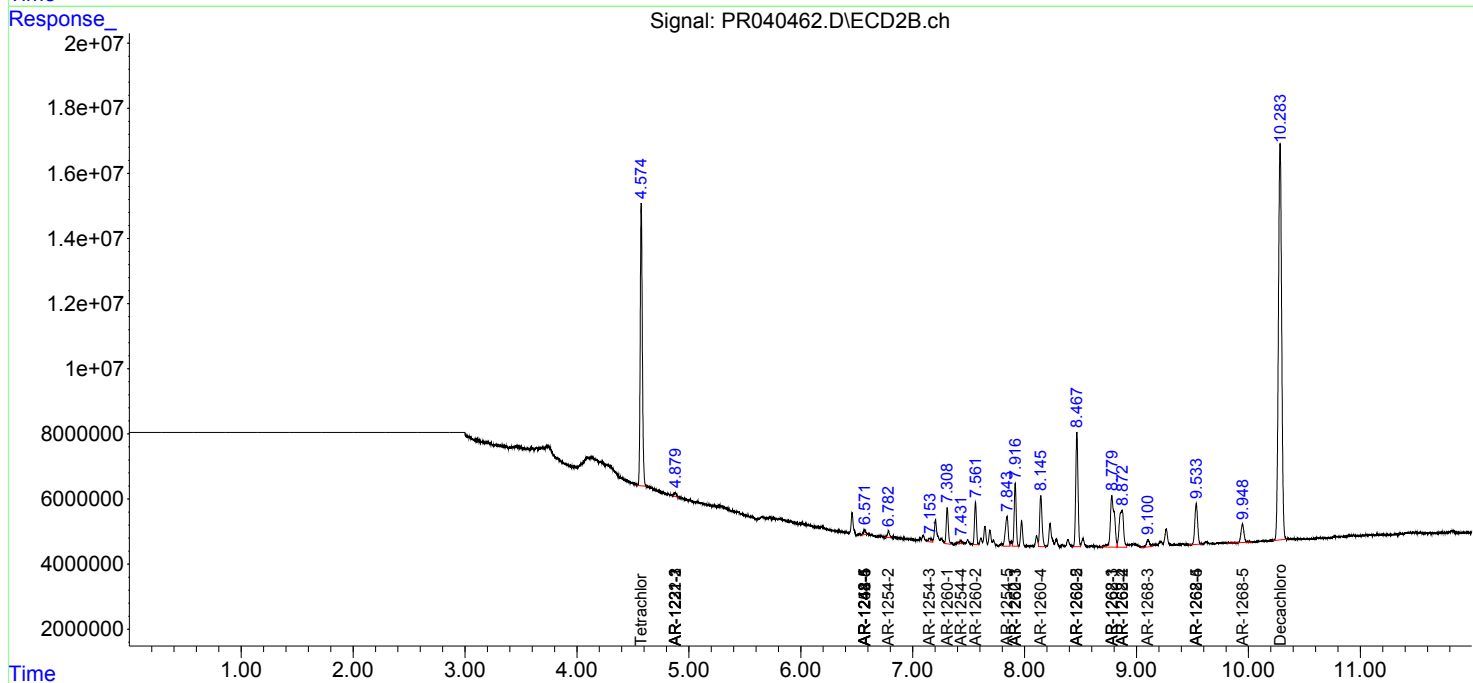
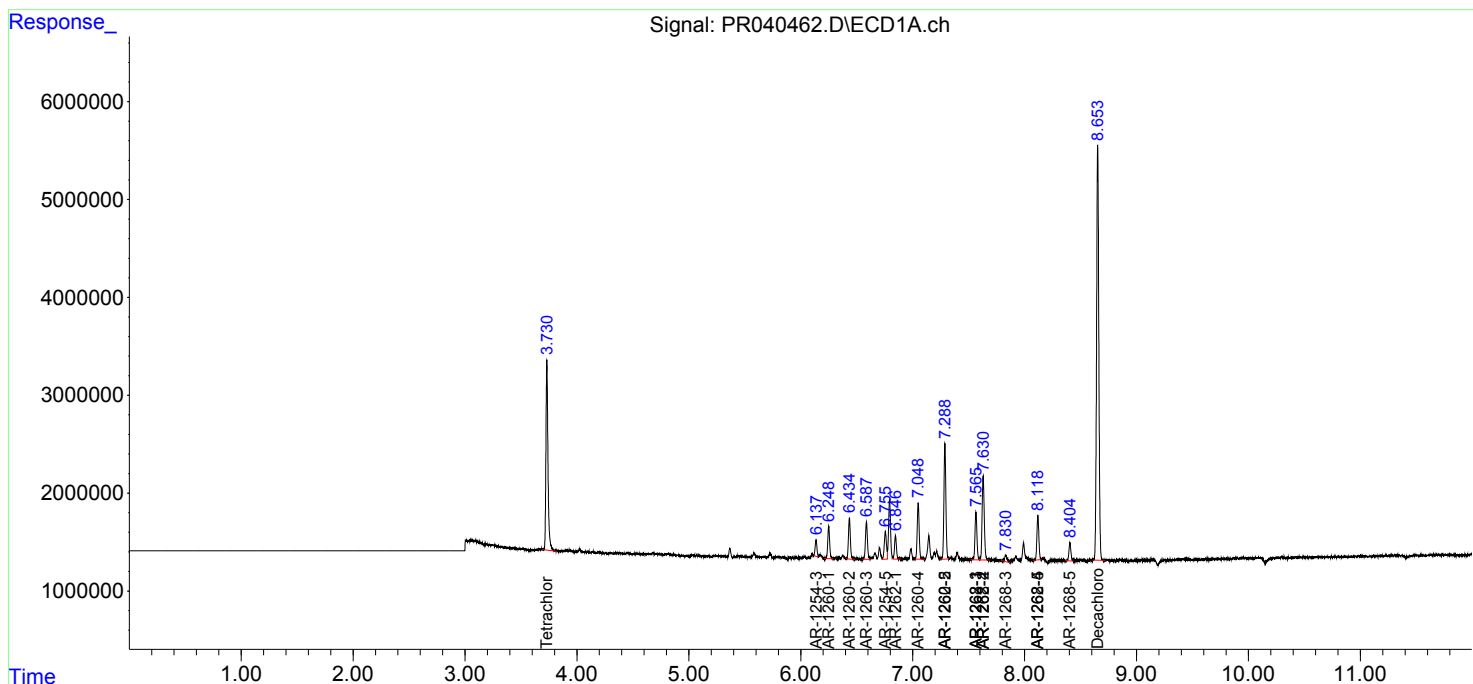
(f)=RT Delta > 1/2 Window (#)=Amounts differ by > 25% (m)=manual int.

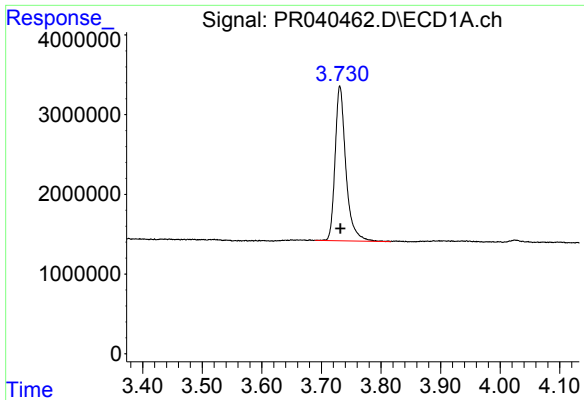
Data Path : Z:\pestpcbsrv\HPCHEM1\ECD\_R\Data\PR082019\  
 Data File : PR040462.D  
 Signal(s) : Signal #1: ECD1A.ch Signal #2: ECD2B.ch  
 Acq On : 20 Aug 2019 12:43  
 Operator : SM\AJ  
 Sample : K3591-07  
 Misc : AR1262 LOD 40 PPB  
 ALS Vial : 19 Sample Multiplier: 1

Instrument :  
 ECD\_R  
 ClientSampled :

Integration File signal 1: autoint1.e  
 Integration File signal 2: autoint2.e  
 Quant Time: Aug 21 00:19:38 2019  
 Quant Method : Z:\pestpcbsrv\HPCHEM1\ECD\_R\Method\PR081919.M  
 Quant Title : GC EXTRACTABLES  
 QLast Update : Tue Aug 20 09:47:16 2019  
 Response via : Initial Calibration  
 Integrator: ChemStation

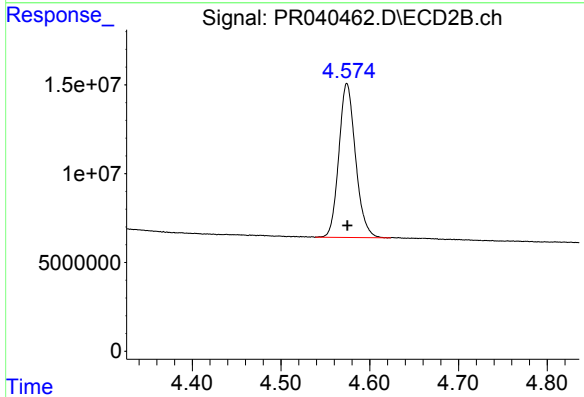
Volume Inj. : 2 µl  
 Signal #1 Phase : ZB-MR1 Signal #2 Phase: ZB-MR2  
 Signal #1 Info : 30Mx0.32mmx 0.50µ Signal #2 Info : 30M x 0.32mm x 0.25µm



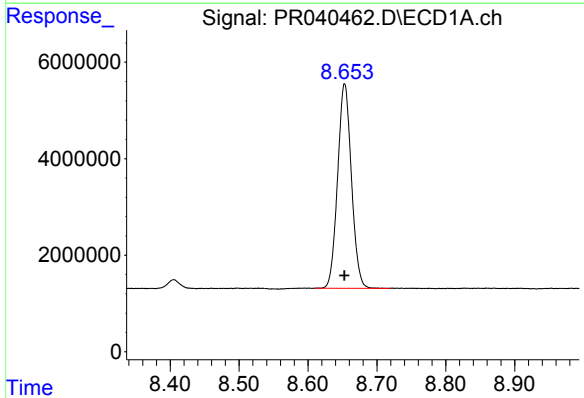


#1 Tetrachloro-m-xylene  
 R.T.: 3.731 min  
 Delta R.T.: 0.000 min  
 Response: 24360722  
 Conc: 13.93 ng/ml

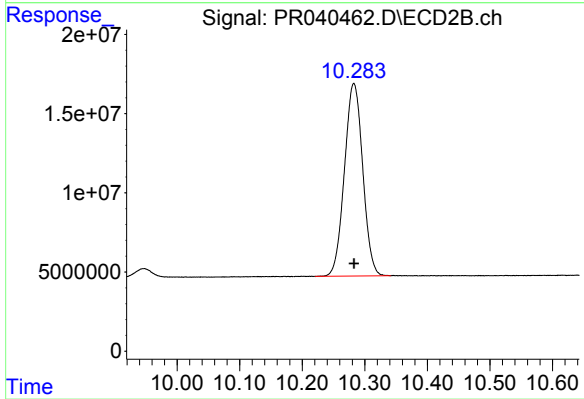
Instrument :  
 ECD\_R  
 ClientSampleId :



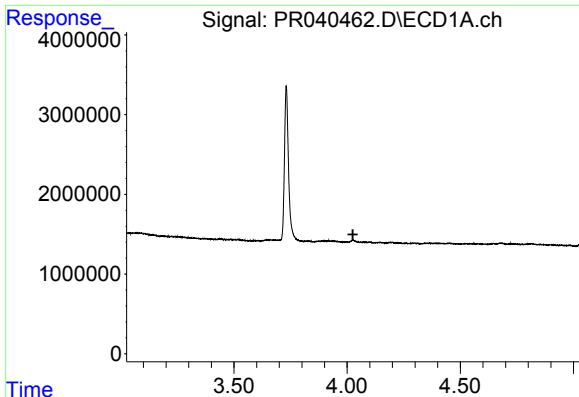
#1 Tetrachloro-m-xylene  
 R.T.: 4.574 min  
 Delta R.T.: 0.000 min  
 Response: 113247464  
 Conc: 13.52 ng/ml



#2 Decachlorobiphenyl  
 R.T.: 8.653 min  
 Delta R.T.: 0.000 min  
 Response: 58985427  
 Conc: 21.39 ng/ml



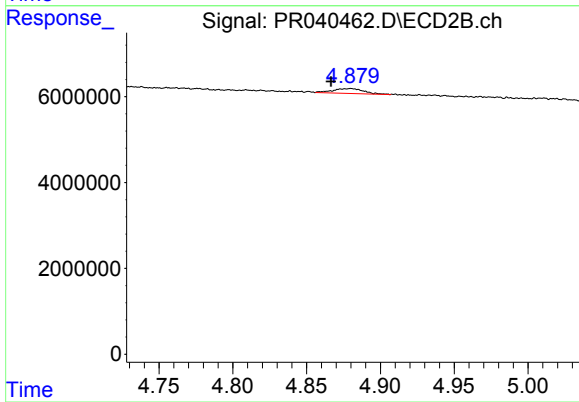
#2 Decachlorobiphenyl  
 R.T.: 10.283 min  
 Delta R.T.: 0.000 min  
 Response: 246771551  
 Conc: 18.94 ng/ml



#9 AR-1221-2

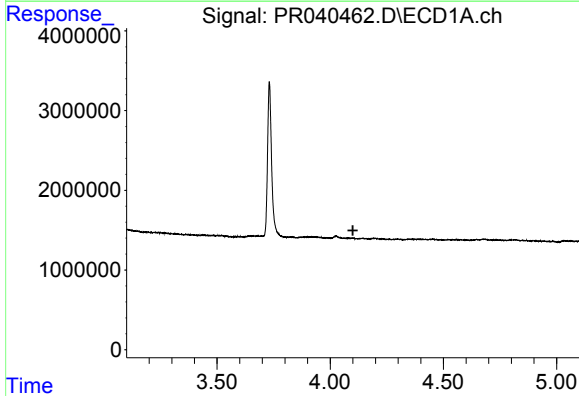
R.T.: 0.000 min  
 Exp R.T. : 4.025 min  
 Response: 0  
 Conc: N.D.

Instrument :  
 ECD\_R  
 ClientSampleId :



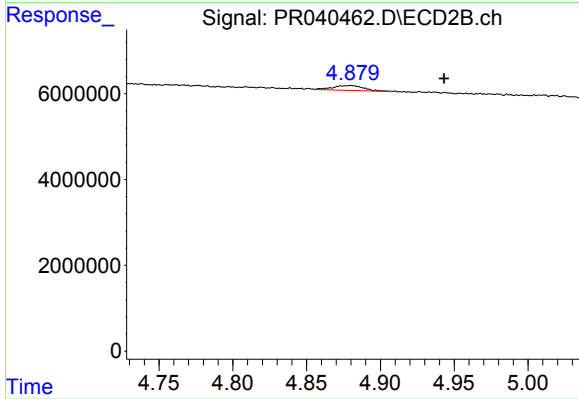
#9 AR-1221-2

R.T.: 4.880 min  
 Delta R.T.: 0.014 min  
 Response: 1654815  
 Conc: 25.56 ng/ml



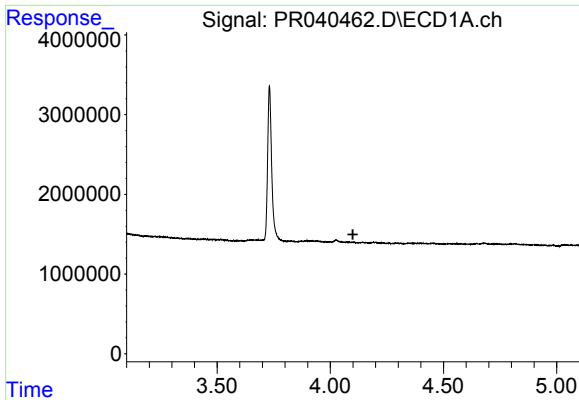
#10 AR-1221-3

R.T.: 0.000 min  
 Exp R.T. : 4.100 min  
 Response: 0  
 Conc: N.D.



#10 AR-1221-3

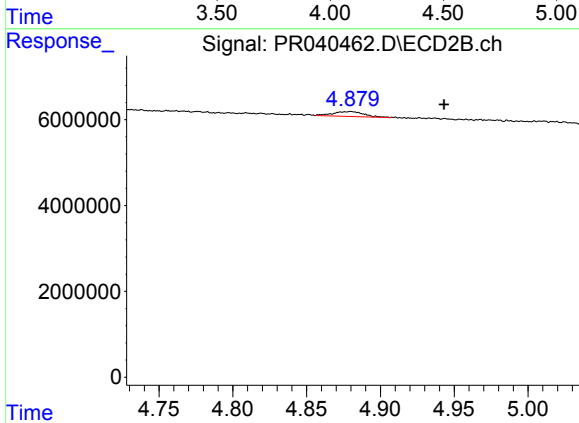
R.T.: 4.880 min  
 Delta R.T.: -0.063 min  
 Response: 1654815  
 Conc: 7.88 ng/ml



#11 AR-1232-1

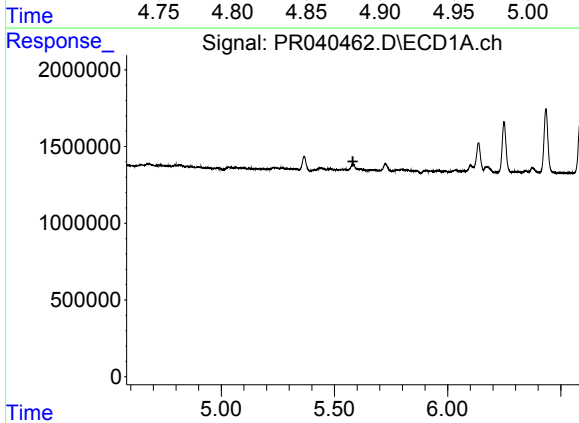
R.T.: 0.000 min  
 Exp R.T.: 4.100 min  
 Response: 0  
 Conc: N.D.

Instrument :  
 ECD\_R  
 ClientSampleId :



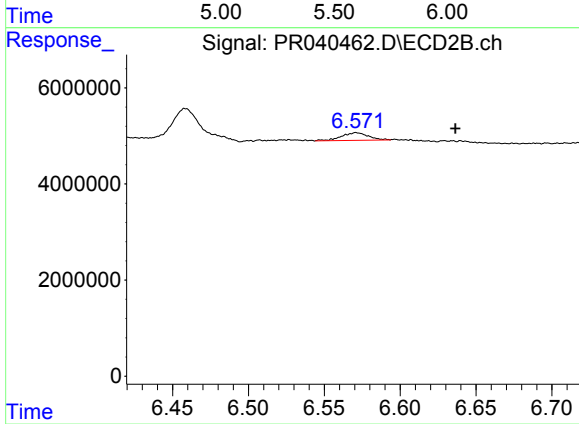
#11 AR-1232-1

R.T.: 4.880 min  
 Delta R.T.: -0.063 min  
 Response: 1654815  
 Conc: 6.71 ng/ml



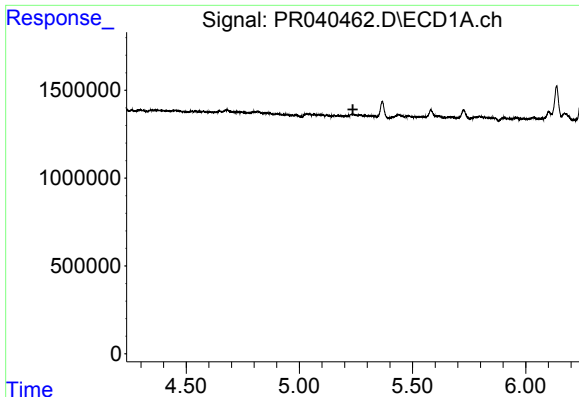
#20 AR-1242-5

R.T.: 0.000 min  
 Exp R.T.: 5.581 min  
 Response: 0  
 Conc: N.D.



#20 AR-1242-5

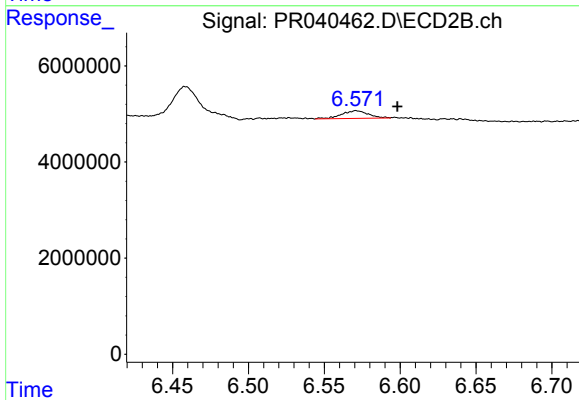
R.T.: 6.571 min  
 Delta R.T.: -0.066 min  
 Response: 1972796  
 Conc: 8.45 ng/ml



#24 AR-1248-4

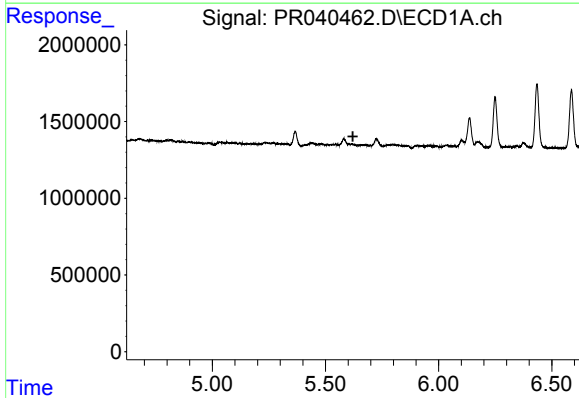
R.T.: 0.000 min  
 Exp R.T. : 5.237 min  
 Response: 0  
 Conc: N.D.

Instrument :  
 ECD\_R  
 ClientSampleId :



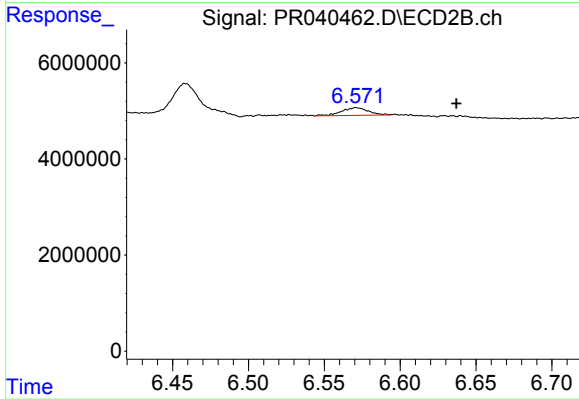
#24 AR-1248-4

R.T.: 6.571 min  
 Delta R.T.: -0.027 min  
 Response: 1972796  
 Conc: 5.33 ng/ml



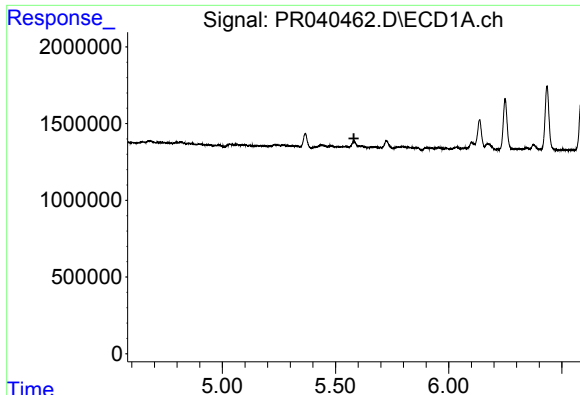
#25 AR-1248-5

R.T.: 0.000 min  
 Exp R.T. : 5.621 min  
 Response: 0  
 Conc: N.D.



#25 AR-1248-5

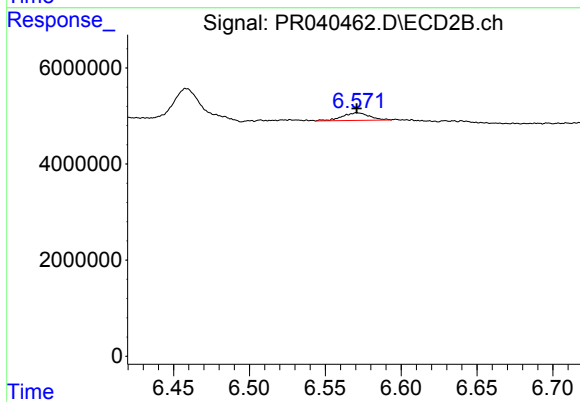
R.T.: 6.571 min  
 Delta R.T.: -0.066 min  
 Response: 1972796  
 Conc: 5.62 ng/ml



#26 AR-1254-1

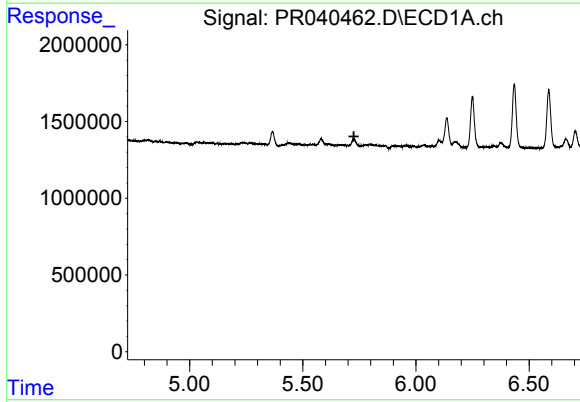
R.T.: 0.000 min  
 Exp R.T.: 5.581 min  
 Response: 0  
 Conc: N.D.

Instrument :  
 ECD\_R  
 ClientSampled :



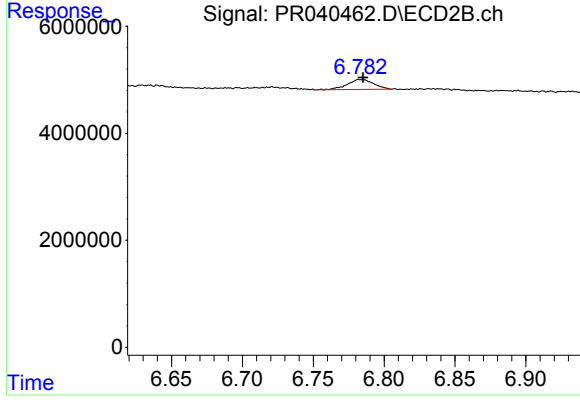
#26 AR-1254-1

R.T.: 6.571 min  
 Delta R.T.: 0.000 min  
 Response: 1972796  
 Conc: 5.70 ng/ml



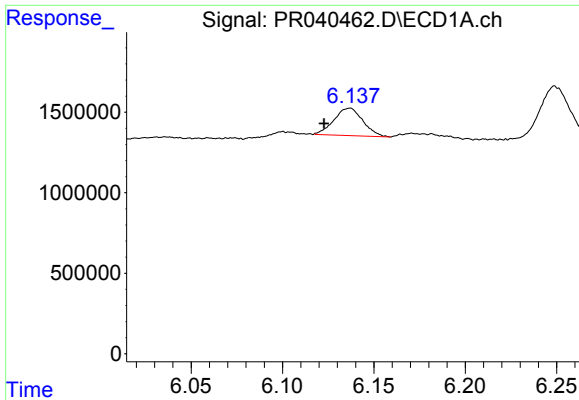
#27 AR-1254-2

R.T.: 0.000 min  
 Exp R.T.: 5.726 min  
 Response: 0  
 Conc: N.D.



#27 AR-1254-2

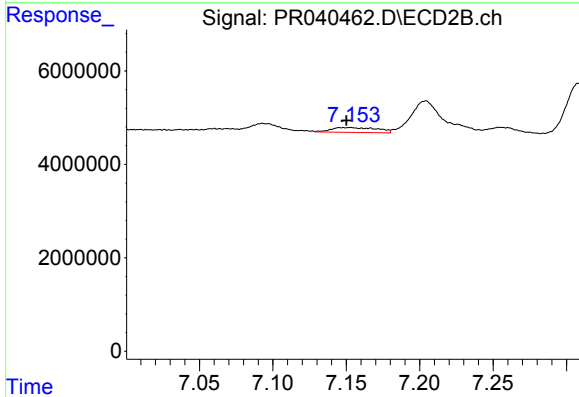
R.T.: 6.782 min  
 Delta R.T.: -0.003 min  
 Response: 2432055  
 Conc: 4.43 ng/ml



#28 AR-1254-3

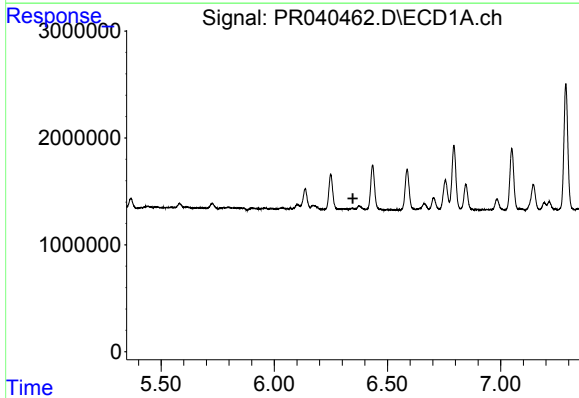
R.T.: 6.137 min  
 Delta R.T.: 0.014 min  
 Response: 1877071  
 Conc: 9.83 ng/ml

Instrument :  
 ECD\_R  
 ClientSampleId :



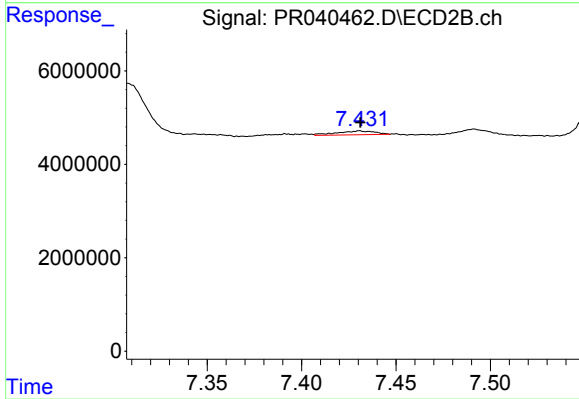
#28 AR-1254-3

R.T.: 7.148 min  
 Delta R.T.: -0.002 min  
 Response: 2311356  
 Conc: 3.72 ng/ml



#29 AR-1254-4

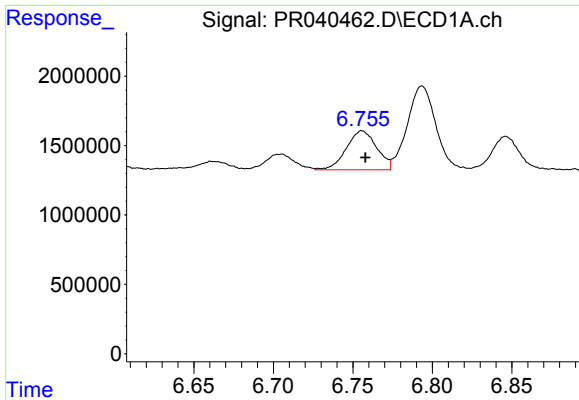
R.T.: 0.000 min  
 Exp R.T. : 6.347 min  
 Response: 0  
 Conc: N.D.



#29 AR-1254-4

R.T.: 7.431 min  
 Delta R.T.: 0.000 min  
 Response: 1133260  
 Conc: 2.36 ng/ml

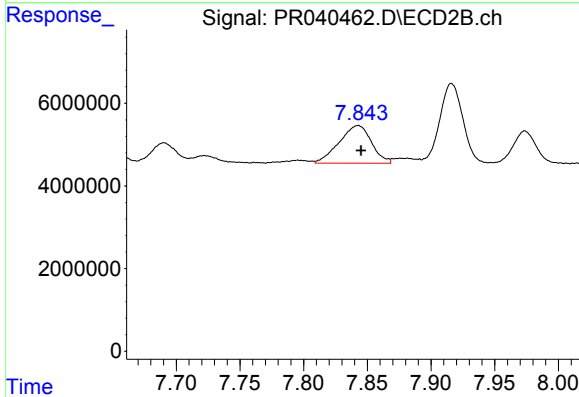




#30 AR-1254-5

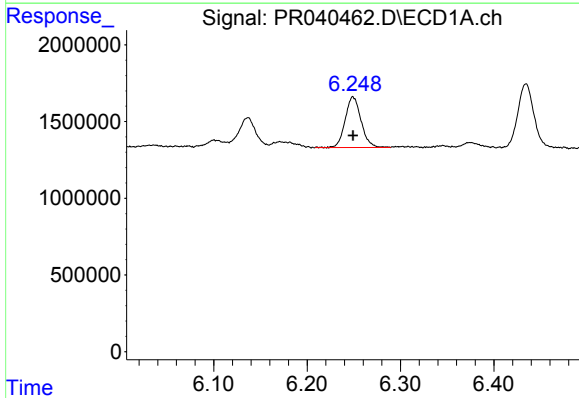
R.T.: 6.756 min  
 Delta R.T.: -0.002 min  
 Response: 3742491  
 Conc: 21.35 ng/ml

Instrument :  
 ECD\_R  
 ClientSampleId :



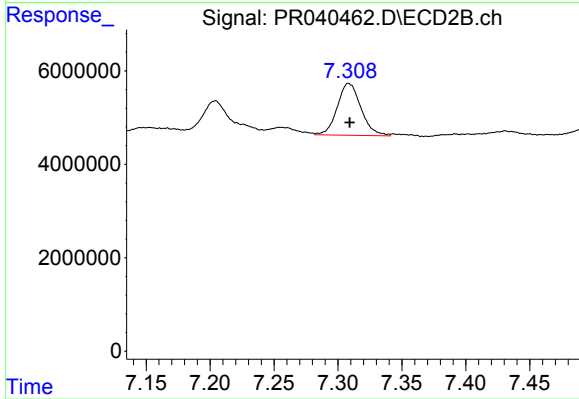
#30 AR-1254-5

R.T.: 7.843 min  
 Delta R.T.: -0.002 min  
 Response: 16112197  
 Conc: 30.77 ng/ml



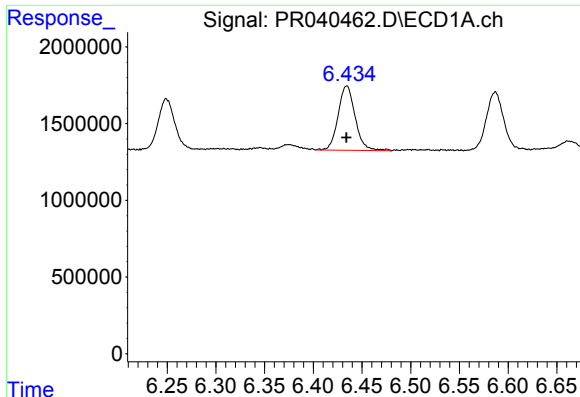
#31 AR-1260-1

R.T.: 6.249 min  
 Delta R.T.: 0.000 min  
 Response: 3904420  
 Conc: 32.99 ng/ml



#31 AR-1260-1

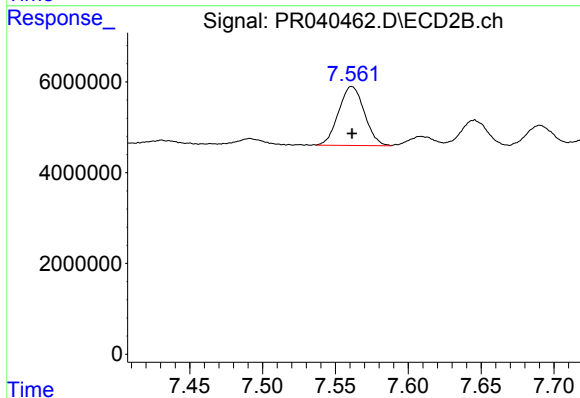
R.T.: 7.308 min  
 Delta R.T.: 0.000 min  
 Response: 14363391  
 Conc: 33.39 ng/ml



#32 AR-1260-2

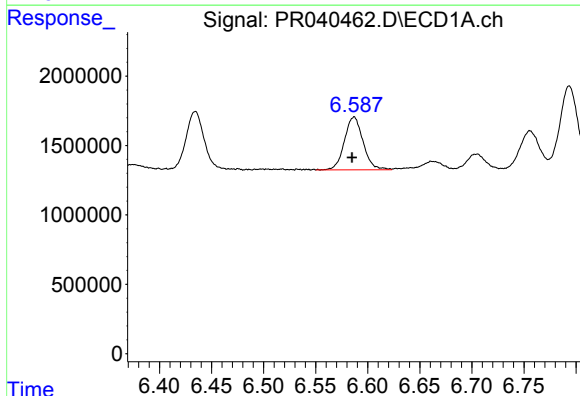
R.T.: 6.434 min  
 Delta R.T.: 0.000 min  
 Response: 5103752  
 Conc: 34.36 ng/ml

Instrument :  
 ECD\_R  
 ClientSampleId :



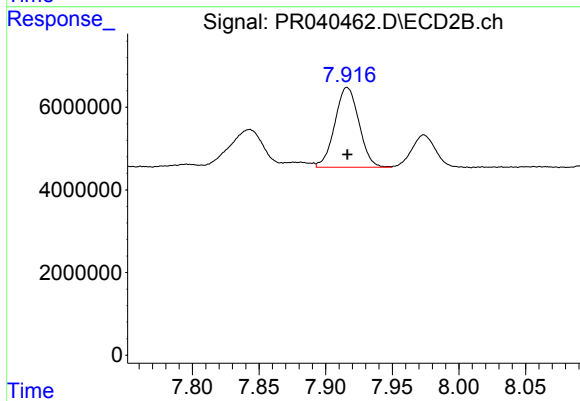
#32 AR-1260-2

R.T.: 7.561 min  
 Delta R.T.: 0.000 min  
 Response: 16011146  
 Conc: 29.73 ng/ml



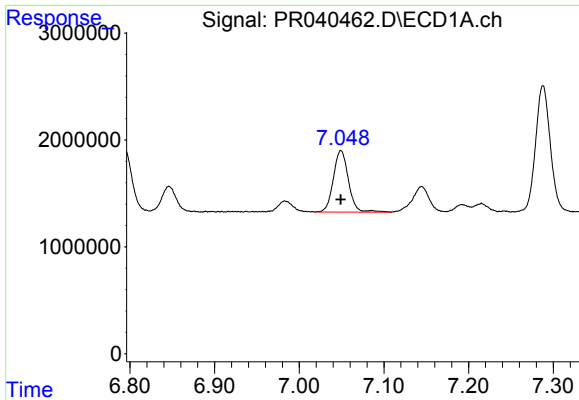
#33 AR-1260-3

R.T.: 6.587 min  
 Delta R.T.: 0.002 min  
 Response: 4753006  
 Conc: 35.21 ng/ml



#33 AR-1260-3

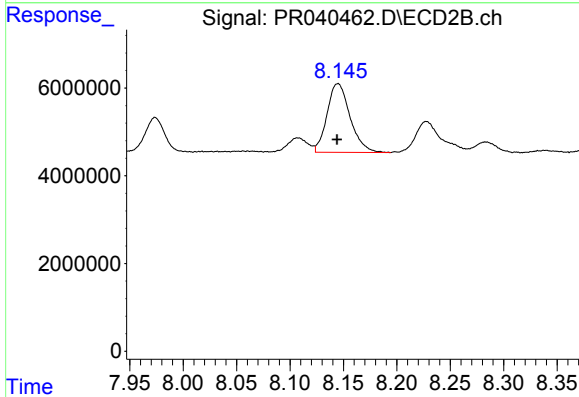
R.T.: 7.916 min  
 Delta R.T.: 0.000 min  
 Response: 24345580  
 Conc: 56.50 ng/ml



#34 AR-1260-4

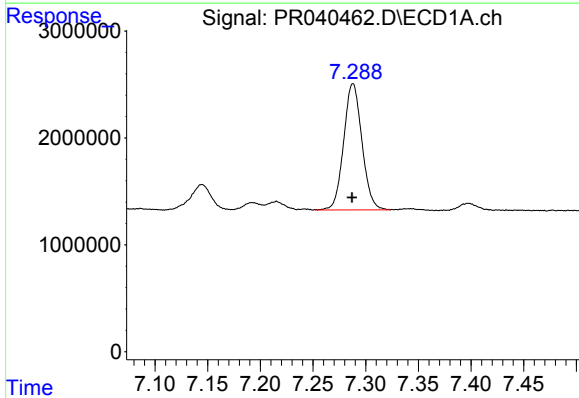
R.T.: 7.049 min  
 Delta R.T.: 0.000 min  
 Response: 7136102  
 Conc: 59.88 ng/ml

Instrument :  
 ECD\_R  
 ClientSampleId :



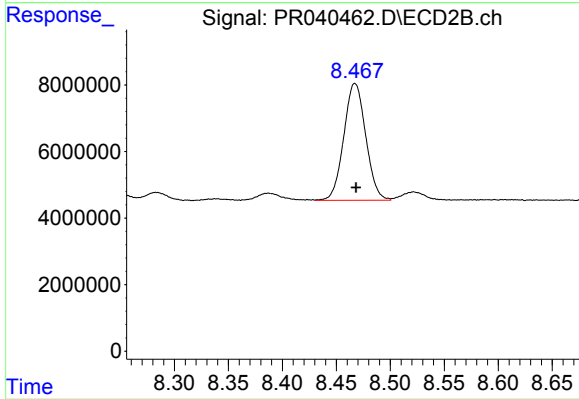
#34 AR-1260-4

R.T.: 8.145 min  
 Delta R.T.: 0.000 min  
 Response: 23454785  
 Conc: 46.48 ng/ml



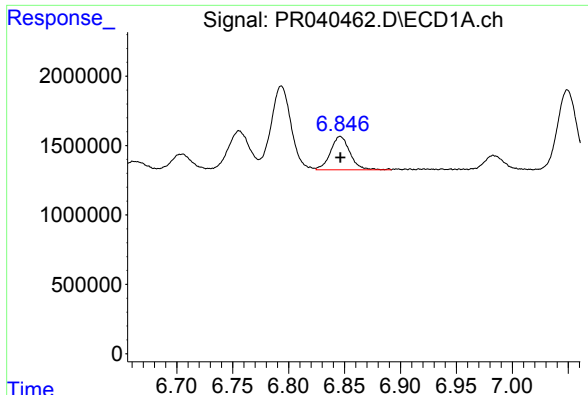
#35 AR-1260-5

R.T.: 7.288 min  
 Delta R.T.: 0.000 min  
 Response: 14288190  
 Conc: 47.51 ng/ml



#35 AR-1260-5

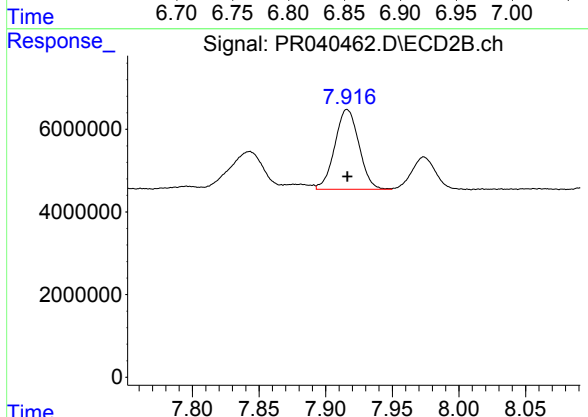
R.T.: 8.467 min  
 Delta R.T.: -0.001 min  
 Response: 49760960  
 Conc: 43.54 ng/ml



#36 AR-1262-1

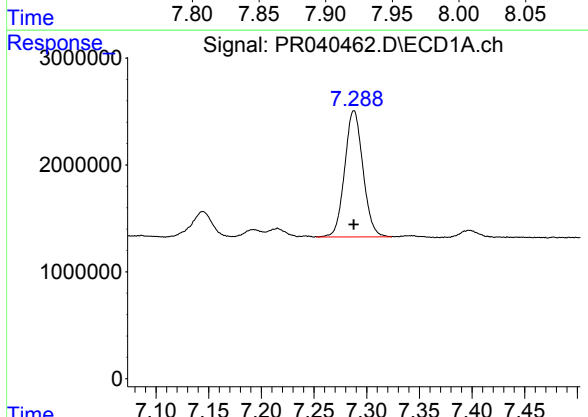
R.T.: 6.846 min  
 Delta R.T.: 0.000 min  
 Response: 2910538  
 Conc: 37.72 ng/ml

Instrument :  
 ECD\_R  
 ClientSampleId :



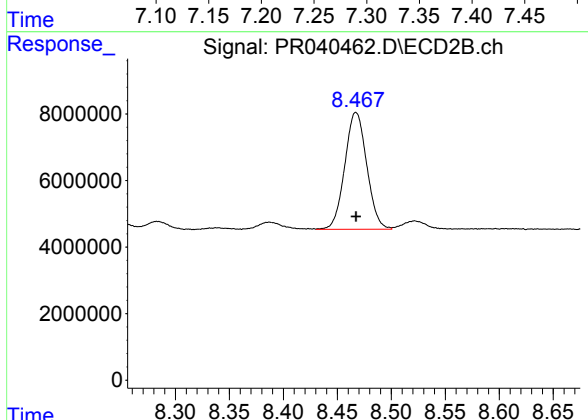
#36 AR-1262-1

R.T.: 7.916 min  
 Delta R.T.: 0.000 min  
 Response: 24345580  
 Conc: 36.19 ng/ml



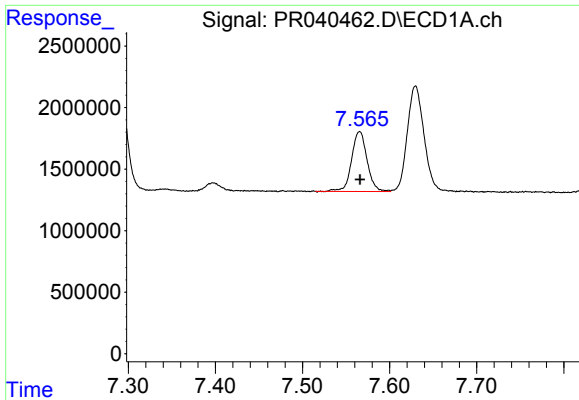
#37 AR-1262-2

R.T.: 7.288 min  
 Delta R.T.: 0.000 min  
 Response: 14288190  
 Conc: 37.12 ng/ml



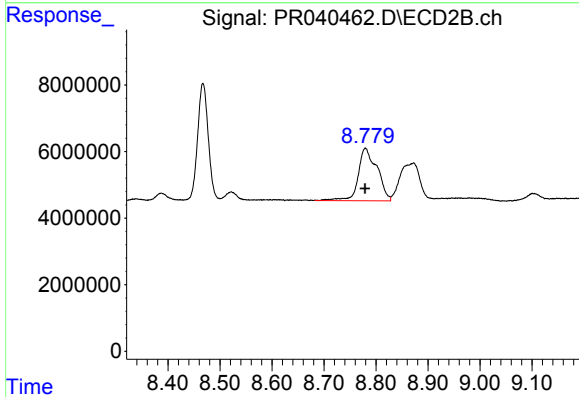
#37 AR-1262-2

R.T.: 8.467 min  
 Delta R.T.: 0.000 min  
 Response: 49760960  
 Conc: 36.43 ng/ml

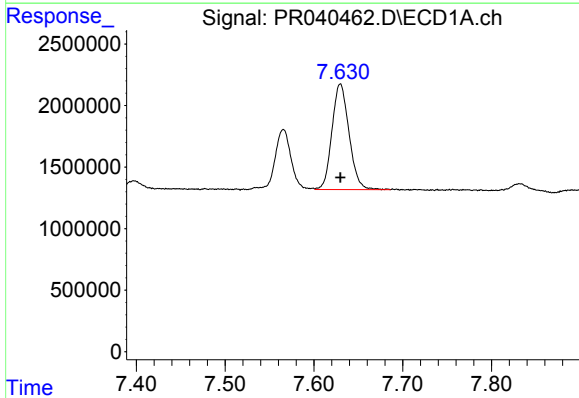


#38 AR-1262-3  
 R.T.: 7.566 min  
 Delta R.T.: 0.000 min  
 Response: 6014558  
 Conc: 41.72 ng/ml

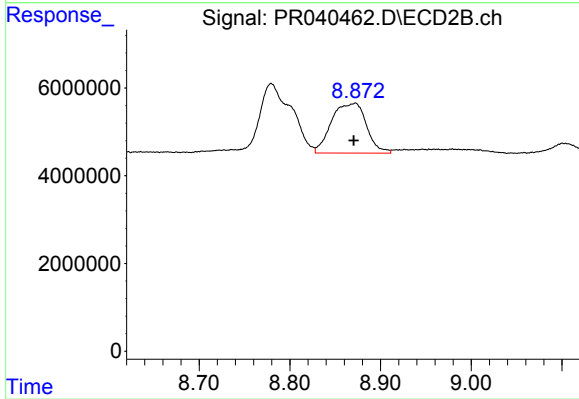
Instrument :  
 ECD\_R  
 ClientSampleId :



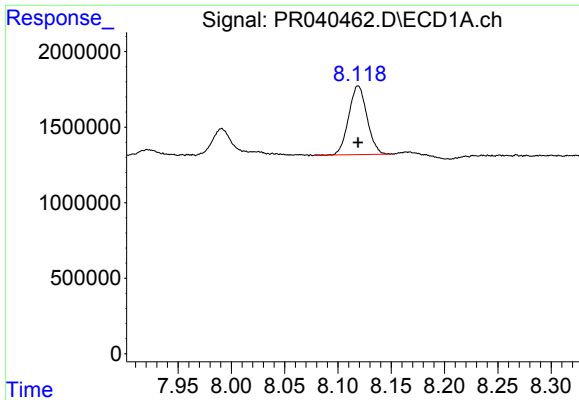
#38 AR-1262-3  
 R.T.: 8.780 min  
 Delta R.T.: 0.000 min  
 Response: 39780208  
 Conc: 43.41 ng/ml



#39 AR-1262-4  
 R.T.: 7.630 min  
 Delta R.T.: 0.000 min  
 Response: 11481600  
 Conc: 40.73 ng/ml



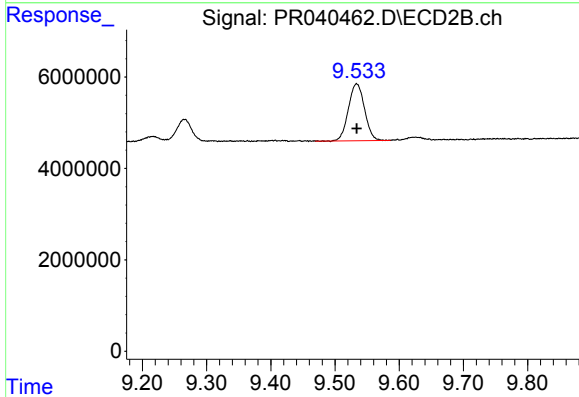
#39 AR-1262-4  
 R.T.: 8.872 min  
 Delta R.T.: 0.002 min  
 Response: 30291091  
 Conc: 43.15 ng/ml



#40 AR-1262-5

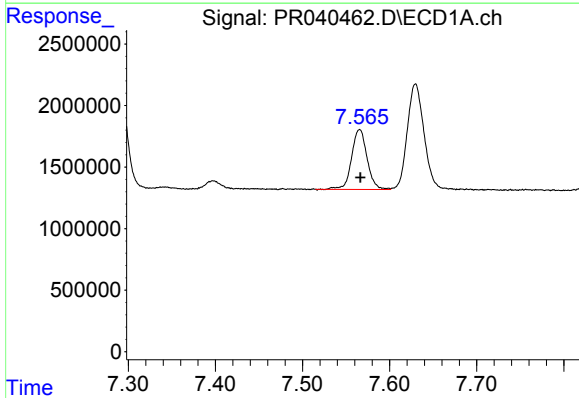
R.T.: 8.119 min  
 Delta R.T.: 0.000 min  
 Response: 5428813  
 Conc: 40.61 ng/ml

Instrument :  
 ECD\_R  
 ClientSampleId :



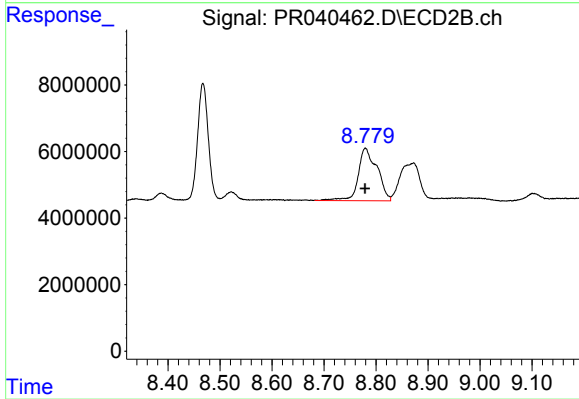
#40 AR-1262-5

R.T.: 9.534 min  
 Delta R.T.: 0.000 min  
 Response: 21753153  
 Conc: 40.25 ng/ml



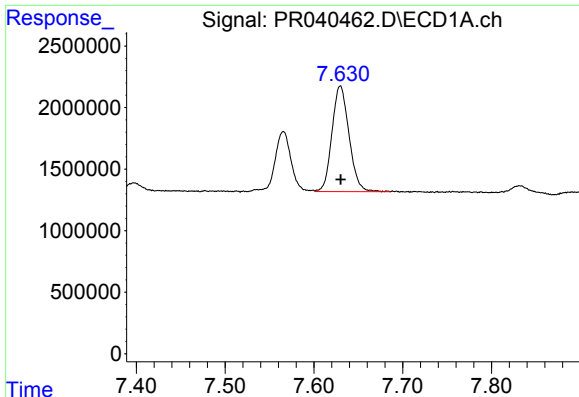
#41 AR-1268-1

R.T.: 7.566 min  
 Delta R.T.: -0.001 min  
 Response: 6014558  
 Conc: 15.42 ng/ml



#41 AR-1268-1

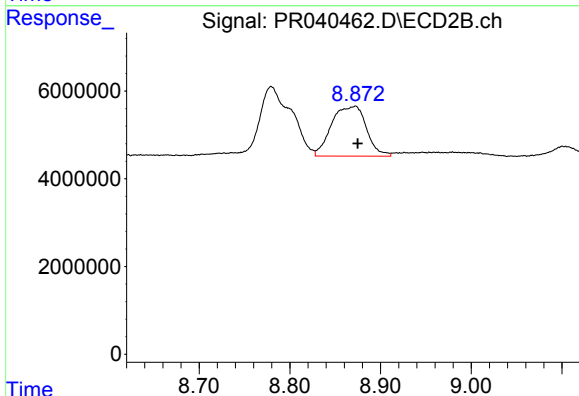
R.T.: 8.780 min  
 Delta R.T.: 0.000 min  
 Response: 39780208  
 Conc: 25.95 ng/ml



#42 AR-1268-2

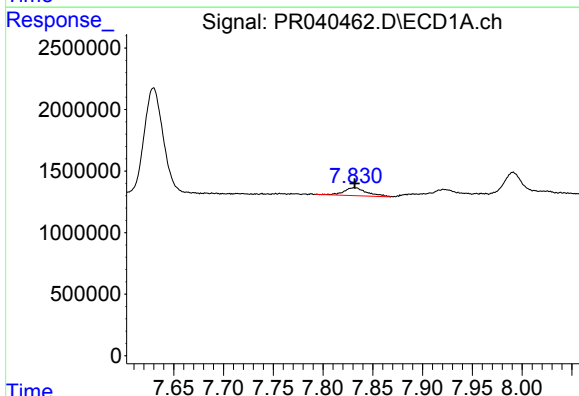
R.T.: 7.630 min  
 Delta R.T.: 0.000 min  
 Response: 11481600  
 Conc: 31.95 ng/ml

Instrument :  
 ECD\_R  
 ClientSampled :



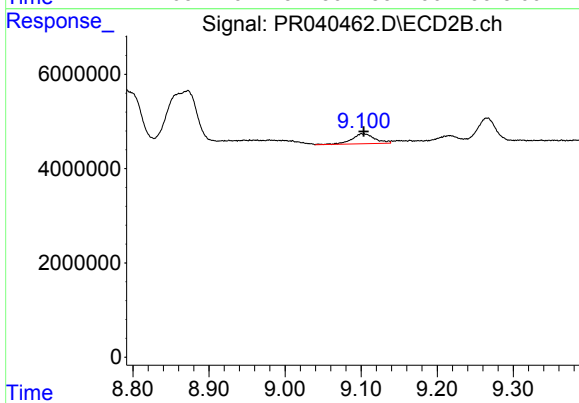
#42 AR-1268-2

R.T.: 8.872 min  
 Delta R.T.: -0.003 min  
 Response: 30291091  
 Conc: 20.72 ng/ml



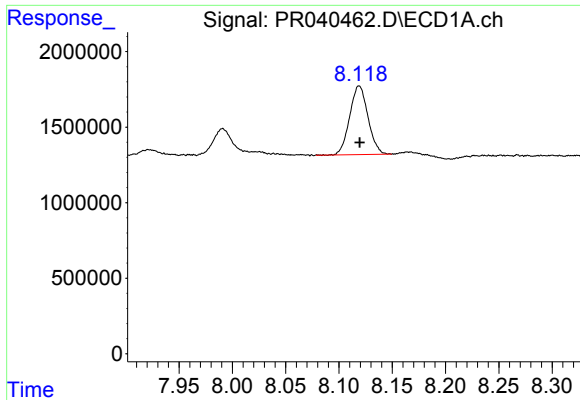
#43 AR-1268-3

R.T.: 7.832 min  
 Delta R.T.: 0.000 min  
 Response: 1031562  
 Conc: 3.53 ng/ml



#43 AR-1268-3

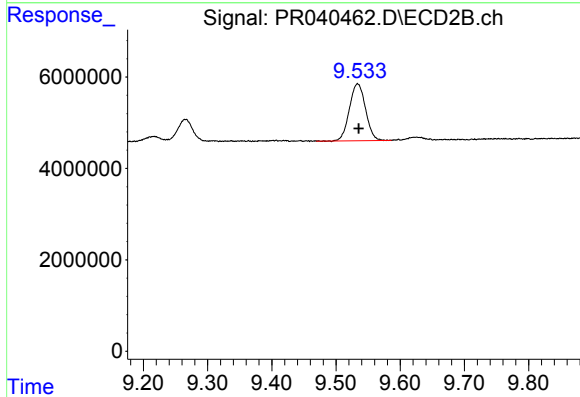
R.T.: 9.101 min  
 Delta R.T.: -0.002 min  
 Response: 4384329  
 Conc: 3.55 ng/ml



#44 AR-1268-4

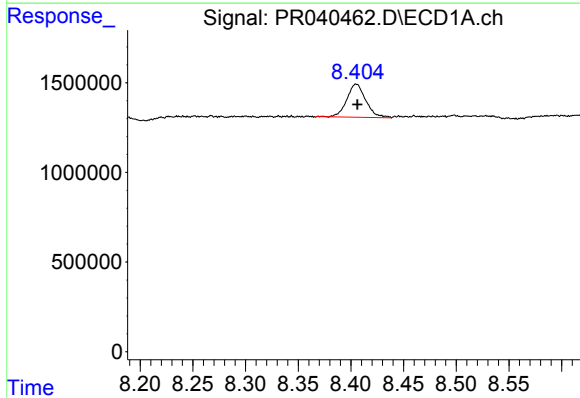
R.T.: 8.119 min  
 Delta R.T.: 0.000 min  
 Response: 5428813  
 Conc: 39.28 ng/ml

Instrument :  
 ECD\_R  
 ClientSampled :



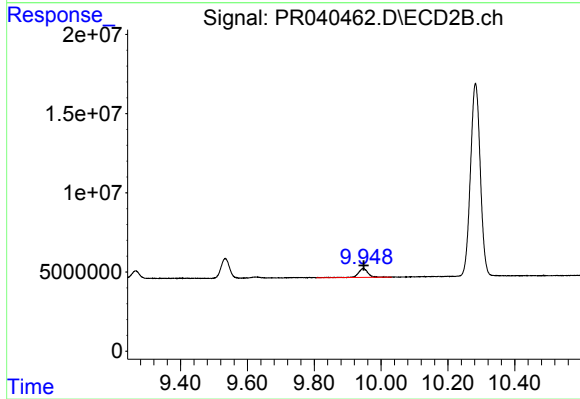
#44 AR-1268-4

R.T.: 9.534 min  
 Delta R.T.: -0.002 min  
 Response: 21753153  
 Conc: 37.91 ng/ml



#45 AR-1268-5

R.T.: 8.405 min  
 Delta R.T.: 0.000 min  
 Response: 2303589  
 Conc: 2.20 ng/ml



#45 AR-1268-5

R.T.: 9.947 min  
 Delta R.T.: -0.001 min  
 Response: 11118095  
 Conc: 2.39 ng/ml