

Data Path : Z:\pestpcbsrv\HPCHEM1\ECD_R\Data\PR082019\
 Data File : PR040452.D
 Signal(s) : Signal #1: ECD1A.ch Signal #2: ECD2B.ch
 Acq On : 20 Aug 2019 10:17
 Operator : SM\AJ
 Sample : K3591-01
 Misc : AR1248 LOD 40 PPB
 ALS Vial : 9 Sample Multiplier: 1

Instrument :
 ECD_R
ClientSampleId :
 LOD-MDL-SOIL-01-QT3-2019

Manual Integrations
APPROVED
 Ankita
 8/21/2019 8:10:41 AM

Integration File signal 1: autoint1.e
 Integration File signal 2: autoint2.e
 Quant Time: Aug 21 00:14:49 2019
 Quant Method : Z:\pestpcbsrv\HPCHEM1\ECD_R\Method\PR081919.M
 Quant Title : GC EXTRACTABLES
 QLast Update : Tue Aug 20 09:47:16 2019
 Response via : Initial Calibration
 Integrator: ChemStation

Volume Inj. : 2 µl
 Signal #1 Phase : ZB-MR1 Signal #2 Phase: ZB-MR2
 Signal #1 Info : 30Mx0.32mmx 0.50µ Signal #2 Info : 30M x 0.32mm x 0.25µm

Compound	RT#1	RT#2	Resp#1	Resp#2	ng/ml	ng/ml

System Monitoring Compounds						
1) SA Tetrachlo...	3.731	4.575	25136243	120.0E6	14.374	14.335
2) SA Decachlor...	8.653	10.284	54664728	236.9E6	19.825	18.189
Target Compounds						
21) L5 AR-1248-1	4.796	5.729	1361426	5787021	32.477	30.744
22) L5 AR-1248-2	5.027	5.995	1940879	10076465	33.113m	39.725
23) L5 AR-1248-3	5.068	6.200	1978863	10705027	32.337m	35.711
24) L5 AR-1248-4	5.237	6.599	2920166	13359965	37.493	36.119
25) L5 AR-1248-5	5.621	6.637	2435541	12582562	29.194	35.852

(f)=RT Delta > 1/2 Window (#)=Amounts differ by > 25% (m)=manual int.

Data Path : Z:\pestpcbsrv\HPCHEM1\ECD_R\Data\PR082019\
 Data File : PR040452.D
 Signal(s) : Signal #1: ECD1A.ch Signal #2: ECD2B.ch
 Acq On : 20 Aug 2019 10:17
 Operator : SM\AJ
 Sample : K3591-01
 Misc : AR1248 LOD 40 PPB
 ALS Vial : 9 Sample Multiplier: 1

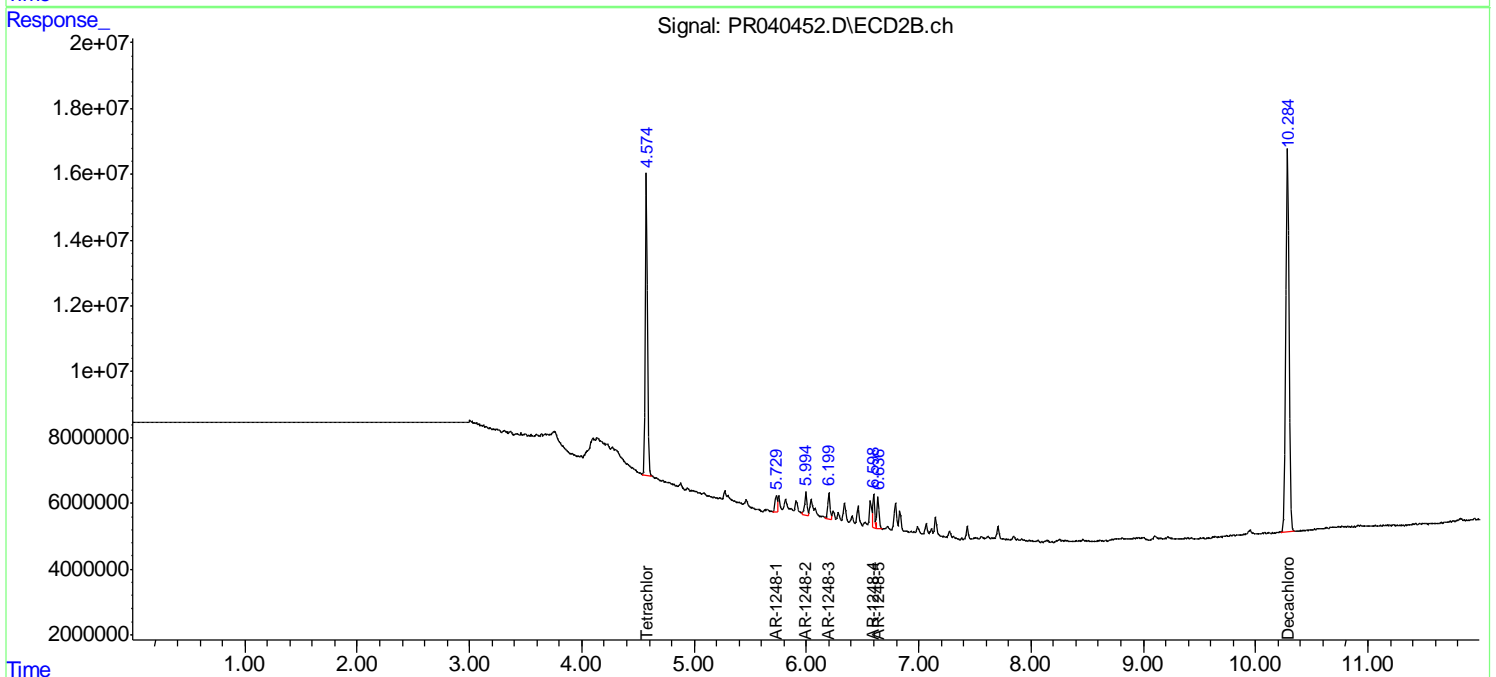
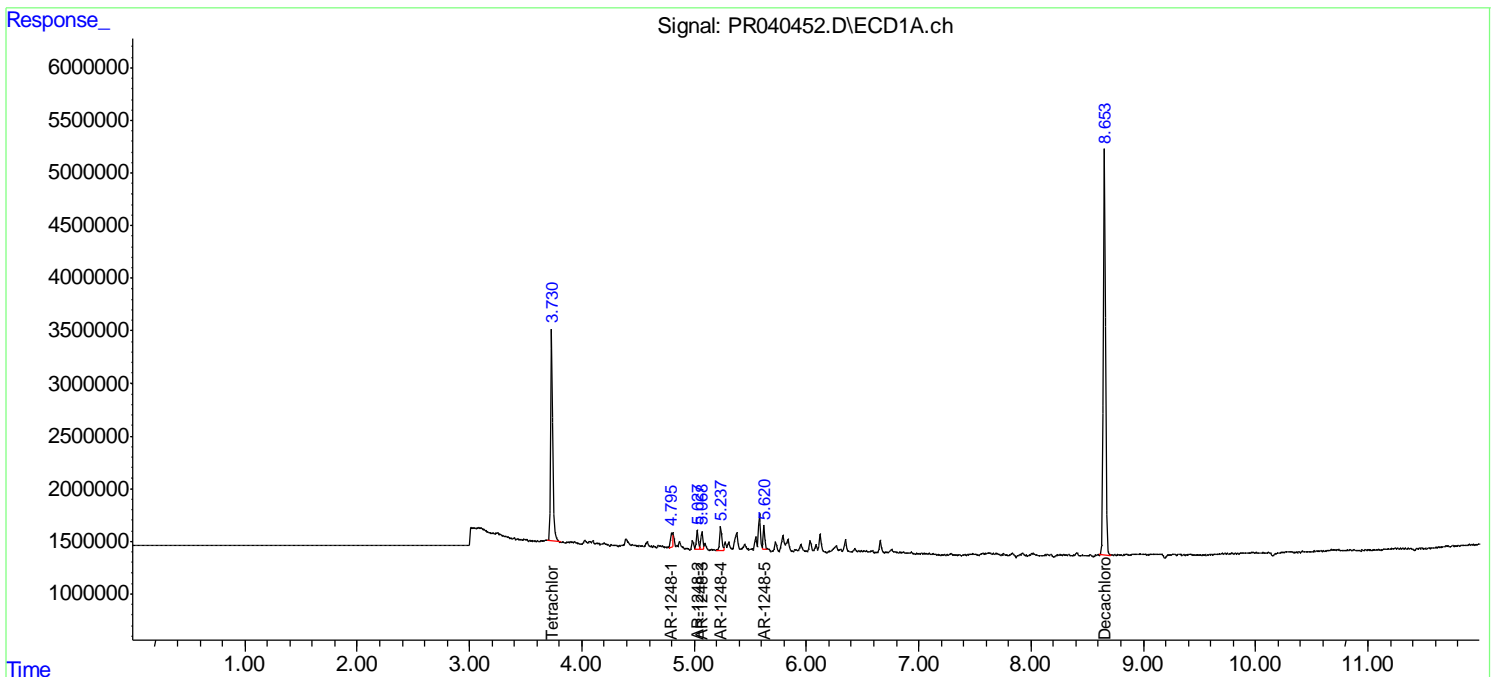
Instrument :
 ECD_R
Client Sampled :
 LOD-MDL-SOIL-01-QT3-2019

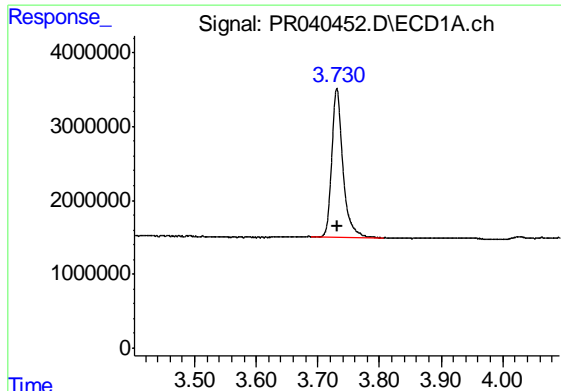
Manual Integrations
APPROVED

Ankita
 8/21/2019 8:10:41 AM

Integration File signal 1: autoint1.e
 Integration File signal 2: autoint2.e
 Quant Time: Aug 21 00:14:49 2019
 Quant Method : Z:\pestpcbsrv\HPCHEM1\ECD_R\Method\PR081919.M
 Quant Title : GC EXTRACTABLES
 QLast Update : Tue Aug 20 09:47:16 2019
 Response via : Initial Calibration
 Integrator: ChemStation

Volume Inj. : 2 µl
 Signal #1 Phase : ZB-MR1 Signal #2 Phase: ZB-MR2
 Signal #1 Info : 30Mx0.32mmx 0.50µ Signal #2 Info : 30M x 0.32mm x 0.25µm

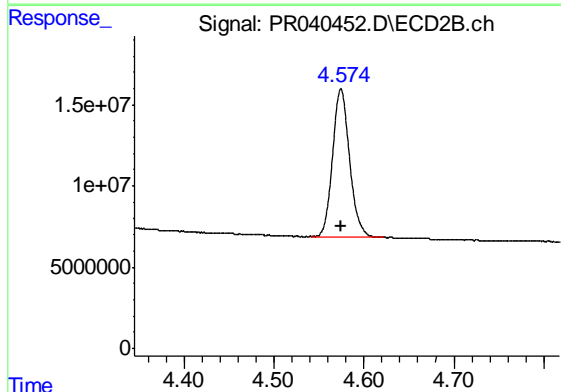




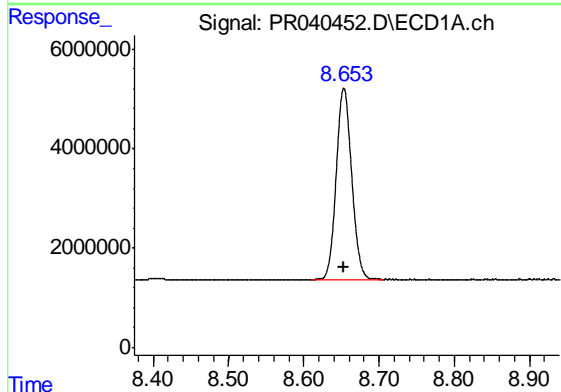
#1 Tetrachloro-m-xylene
 R.T.: 3.731 min
 Delta R.T.: -0.001 min
 Response: 25136243
 Conc: 14.37 ng/ml

Instrument :
 ECD_R
ClientSampled :
 LOD-MDL-SOIL-01-QT3-2019

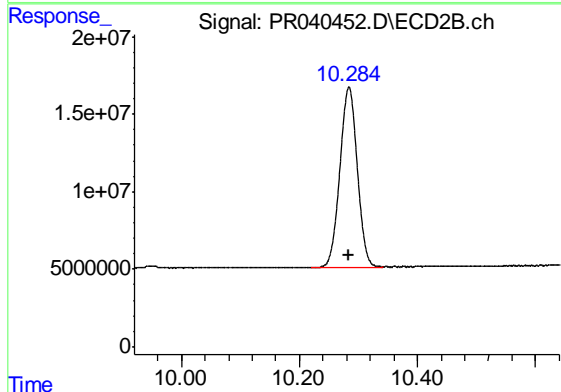
Manual Integrations
APPROVED
 Ankita
 8/21/2019 8:10:41 AM



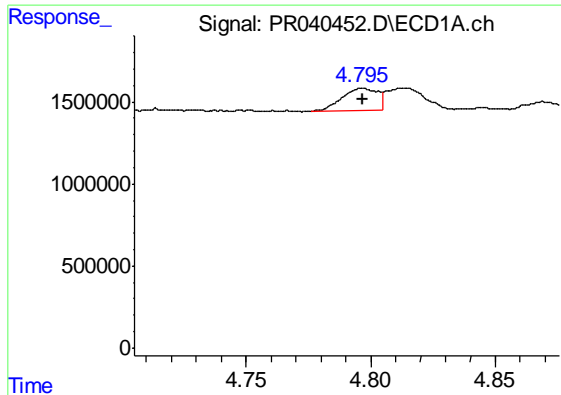
#1 Tetrachloro-m-xylene
 R.T.: 4.575 min
 Delta R.T.: 0.000 min
 Response: 120033106
 Conc: 14.34 ng/ml



#2 Decachlorobiphenyl
 R.T.: 8.653 min
 Delta R.T.: 0.000 min
 Response: 54664728
 Conc: 19.83 ng/ml



#2 Decachlorobiphenyl
 R.T.: 10.284 min
 Delta R.T.: 0.001 min
 Response: 236937662
 Conc: 18.19 ng/ml



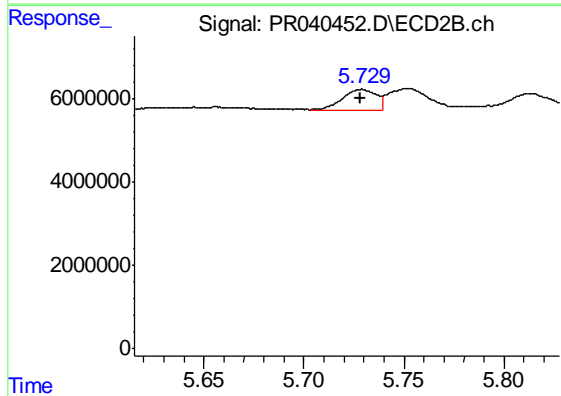
#21 AR-1248-1

R.T.: 4.796 min
 Delta R.T.: 0.000 min
 Response: 1361426
 Conc: 32.48 ng/ml

Instrument :
 ECD_R
 ClientSampled :
 LOD-MDL-SOIL-01-QT3-2019

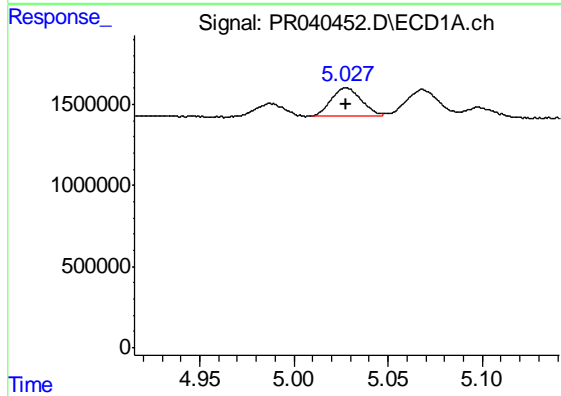
Manual Integrations
 APPROVED

Ankita
 8/21/2019 8:10:41 AM



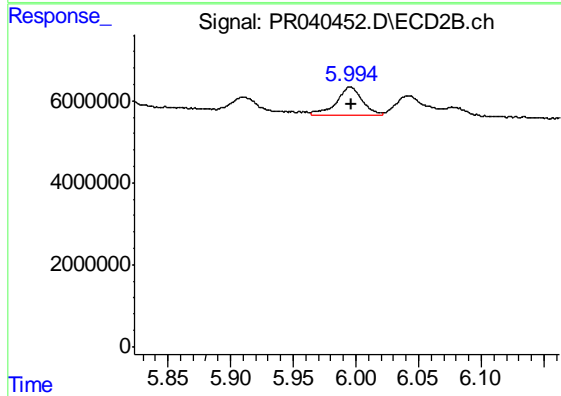
#21 AR-1248-1

R.T.: 5.729 min
 Delta R.T.: 0.000 min
 Response: 5787021
 Conc: 30.74 ng/ml



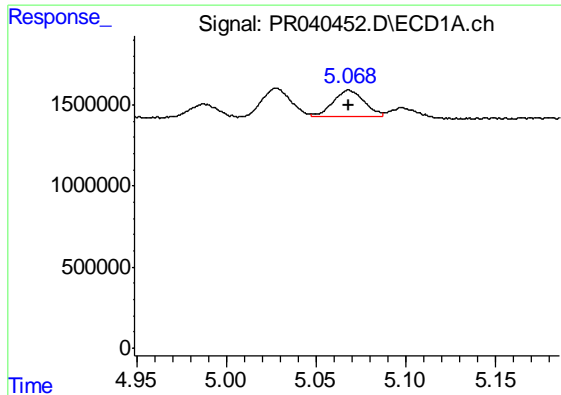
#22 AR-1248-2

R.T.: 5.027 min
 Delta R.T.: 0.000 min
 Response: 1940879
 Conc: 33.11 ng/ml m



#22 AR-1248-2

R.T.: 5.995 min
 Delta R.T.: -0.001 min
 Response: 10076465
 Conc: 39.72 ng/ml



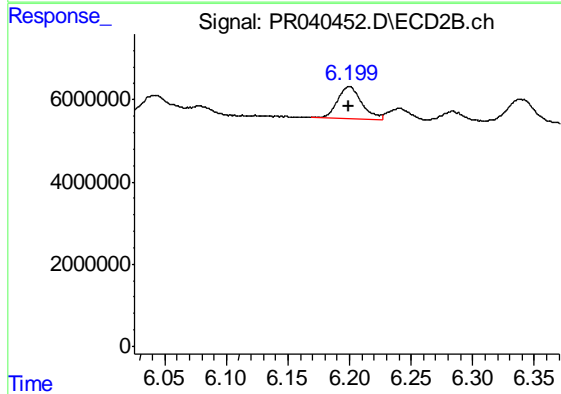
#23 AR-1248-3

R.T.: 5.068 min
 Delta R.T.: 0.000 min
 Response: 1978863
 Conc: 32.34 ng/ml m

Instrument :
 ECD_R
 ClientSampleId :
 LOD-MDL-SOIL-01-QT3-2019

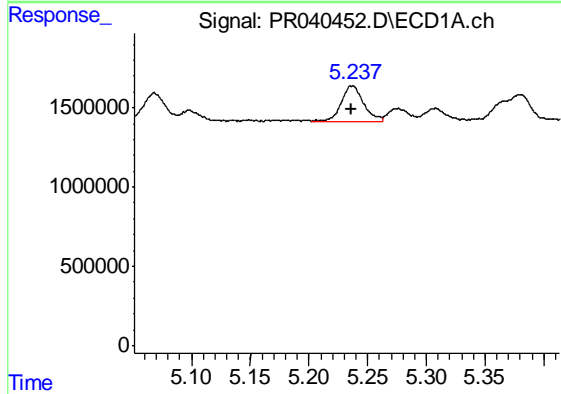
Manual Integrations
 APPROVED

Ankita
 8/21/2019 8:10:41 AM



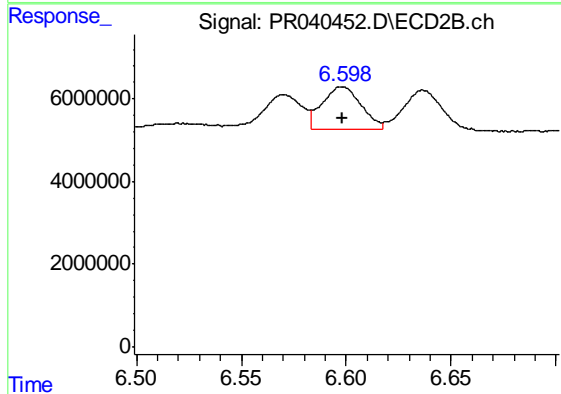
#23 AR-1248-3

R.T.: 6.200 min
 Delta R.T.: 0.000 min
 Response: 10705027
 Conc: 35.71 ng/ml



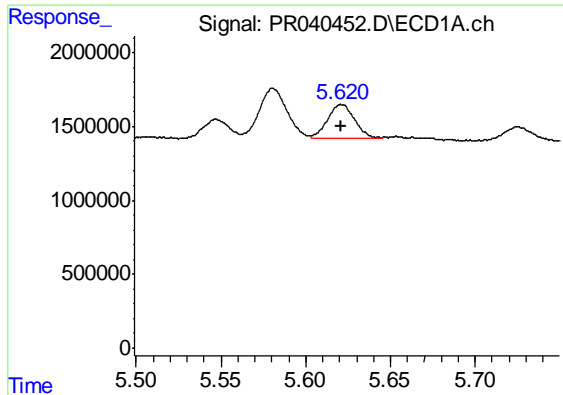
#24 AR-1248-4

R.T.: 5.237 min
 Delta R.T.: 0.000 min
 Response: 2920166
 Conc: 37.49 ng/ml



#24 AR-1248-4

R.T.: 6.599 min
 Delta R.T.: 0.000 min
 Response: 13359965
 Conc: 36.12 ng/ml



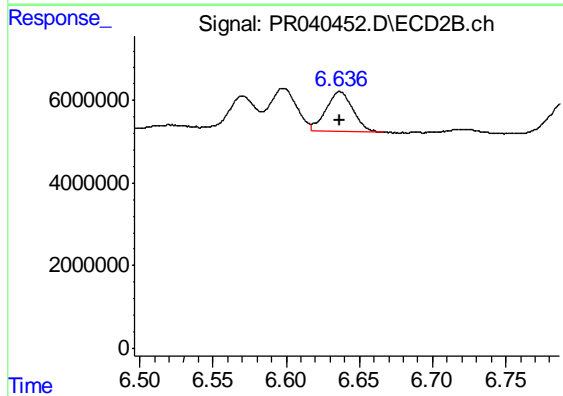
#25 AR-1248-5

R.T.: 5.621 min
Delta R.T.: 0.000 min
Response: 2435541
Conc: 29.19 ng/ml

Instrument :
ECD_R
ClientSampleId :
LOD-MDL-SOIL-01-QT3-2019

Manual Integrations
APPROVED

Ankita
8/21/2019 8:10:41 AM



#25 AR-1248-5

R.T.: 6.637 min
Delta R.T.: 0.000 min
Response: 12582562
Conc: 35.85 ng/ml