

Data Path : Z:\pestpcbsrv\HPCHEM1\ECD_R\Data\PR082019\
 Data File : PR040455.D
 Signal(s) : Signal #1: ECD1A.ch Signal #2: ECD2B.ch
 Acq On : 20 Aug 2019 11:01
 Operator : SM\AJ
 Sample : K3591-01
 Misc : AR1268 LOD 40 PPB
 ALS Vial : 12 Sample Multiplier: 1

Instrument :
 ECD_R
 ClientSampleId :
 LOD-MDL-SOIL-01-QT3-2019

Integration File signal 1: autoint1.e
 Integration File signal 2: autoint2.e
 Quant Time: Aug 21 00:16:23 2019
 Quant Method : Z:\pestpcbsrv\HPCHEM1\ECD_R\Method\PR081919.M
 Quant Title : GC EXTRACTABLES
 QLast Update : Tue Aug 20 09:47:16 2019
 Response via : Initial Calibration
 Integrator: ChemStation

Volume Inj. : 2 µl
 Signal #1 Phase : ZB-MR1 Signal #2 Phase: ZB-MR2
 Signal #1 Info : 30Mx0.32mmx 0.50µ Signal #2 Info : 30M x 0.32mm x 0.25µm

Compound	RT#1	RT#2	Resp#1	Resp#2	ng/ml	ng/ml

System Monitoring Compounds						
1) SA Tetrachlo...	3.732	4.575	24855126	119.2E6	14.214	14.240
2) SA Decachlor...	8.651	10.282	68646224	287.5E6	24.896	22.072
Target Compounds						
41) L9 AR-1268-1	7.565	8.778	17484398	64431733	44.834	42.036
42) L9 AR-1268-2	7.630	8.873	15952230	60362896	44.385	41.287
43) L9 AR-1268-3	7.831	9.102	13823892	54281287	47.322	43.933
44) L9 AR-1268-4	8.118	9.533	6717953	24749346	48.606	43.137
45) L9 AR-1268-5	8.405	9.946	46025197	194.8E6	43.916	41.903

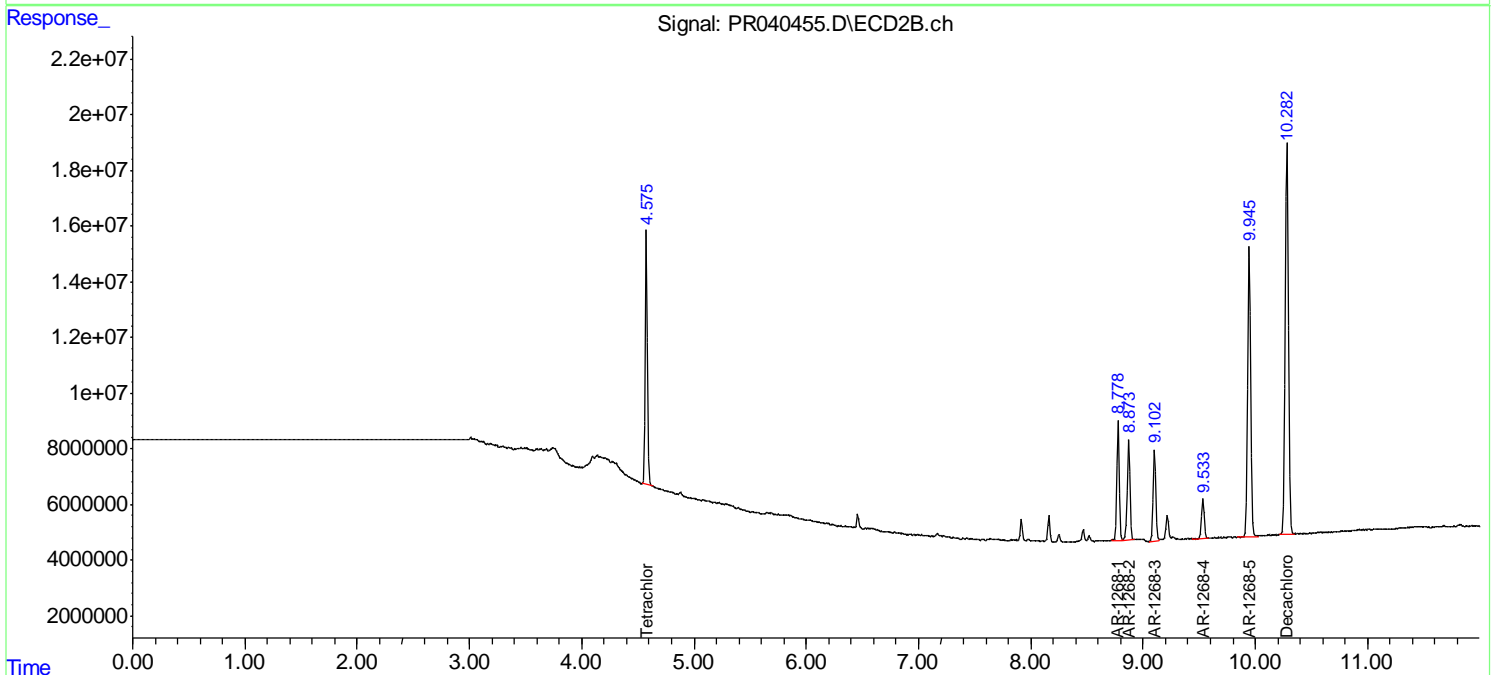
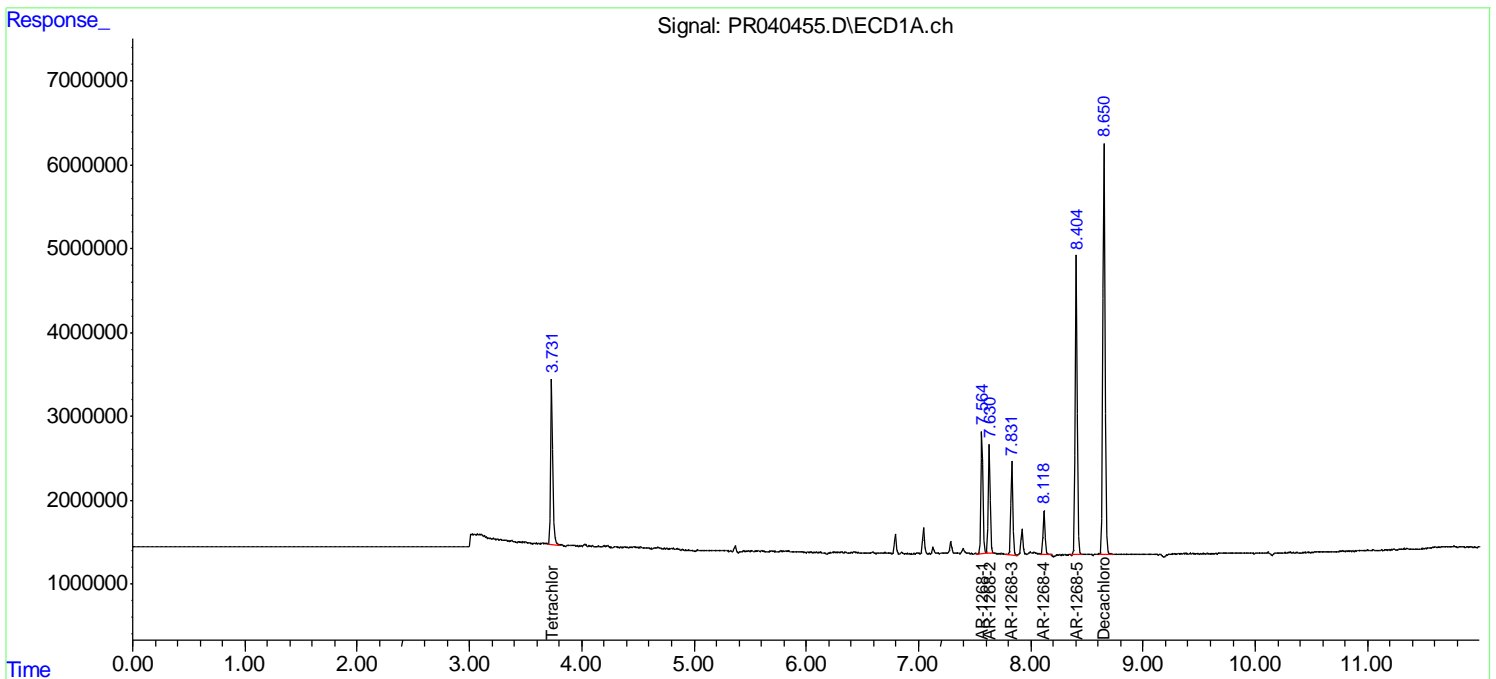
(f)=RT Delta > 1/2 Window (#)=Amounts differ by > 25% (m)=manual int.

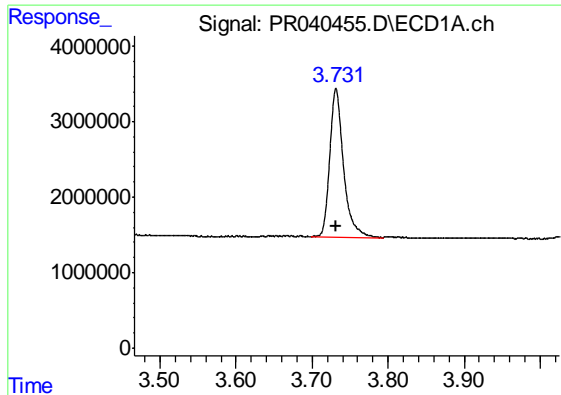
Data Path : Z:\pestpcbsrv\HPCHEM1\ECD_R\Data\PR082019\
 Data File : PR040455.D
 Signal(s) : Signal #1: ECD1A.ch Signal #2: ECD2B.ch
 Acq On : 20 Aug 2019 11:01
 Operator : SM\AJ
 Sample : K3591-01
 Misc : AR1268 LOD 40 PPB
 ALS Vial : 12 Sample Multiplier: 1

Instrument :
 ECD_R
Client Sampled :
 LOD-MDL-SOIL-01-QT3-2019

Integration File signal 1: autoint1.e
 Integration File signal 2: autoint2.e
 Quant Time: Aug 21 00:16:23 2019
 Quant Method : Z:\pestpcbsrv\HPCHEM1\ECD_R\Method\PR081919.M
 Quant Title : GC EXTRACTABLES
 QLast Update : Tue Aug 20 09:47:16 2019
 Response via : Initial Calibration
 Integrator: ChemStation

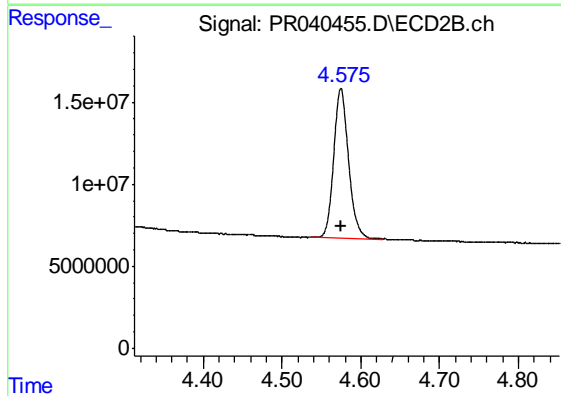
Volume Inj. : 2 µl
 Signal #1 Phase : ZB-MR1 Signal #2 Phase: ZB-MR2
 Signal #1 Info : 30Mx0.32mmx 0.50µ Signal #2 Info : 30M x 0.32mm x 0.25µm



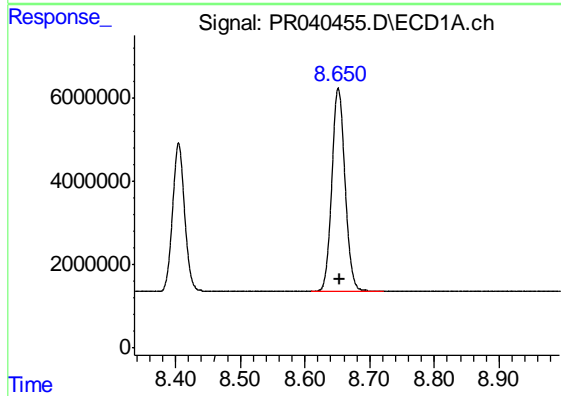


#1 Tetrachloro-m-xylene
 R.T.: 3.732 min
 Delta R.T.: 0.000 min
 Response: 24855126
 Conc: 14.21 ng/ml

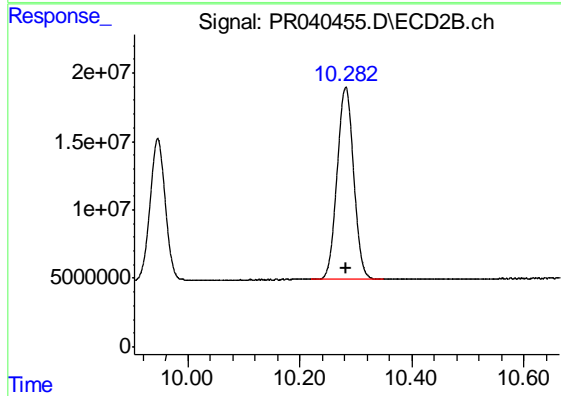
Instrument :
 ECD_R
ClientSampleId :
 LOD-MDL-SOIL-01-QT3-2019



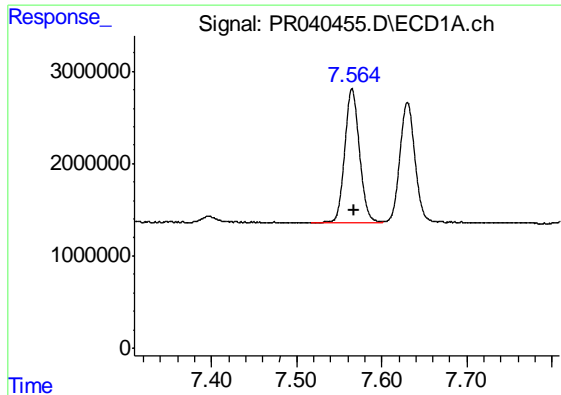
#1 Tetrachloro-m-xylene
 R.T.: 4.575 min
 Delta R.T.: 0.000 min
 Response: 119240752
 Conc: 14.24 ng/ml



#2 Decachlorobiphenyl
 R.T.: 8.651 min
 Delta R.T.: -0.002 min
 Response: 68646224
 Conc: 24.90 ng/ml



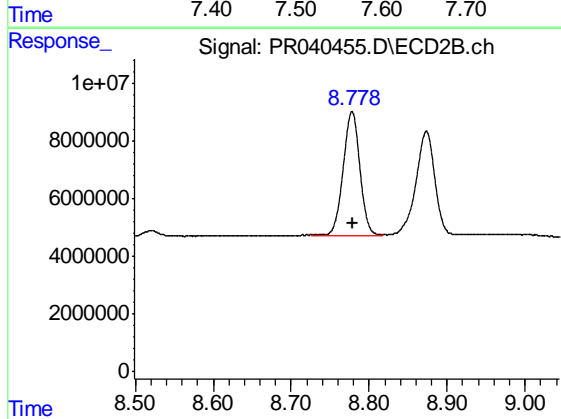
#2 Decachlorobiphenyl
 R.T.: 10.282 min
 Delta R.T.: -0.001 min
 Response: 287515620
 Conc: 22.07 ng/ml



#41 AR-1268-1

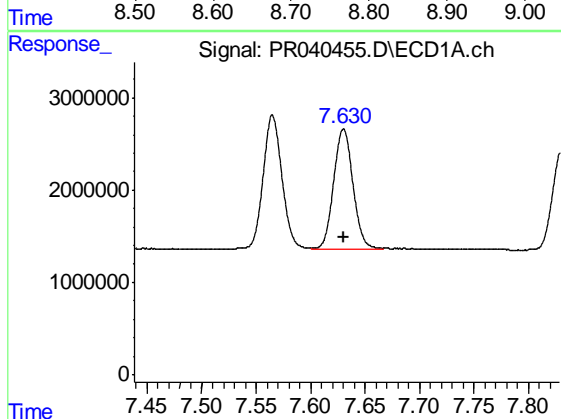
R.T.: 7.565 min
 Delta R.T.: -0.002 min
 Response: 17484398
 Conc: 44.83 ng/ml

Instrument :
 ECD_R
 ClientSampleId :
 LOD-MDL-SOIL-01-QT3-2019



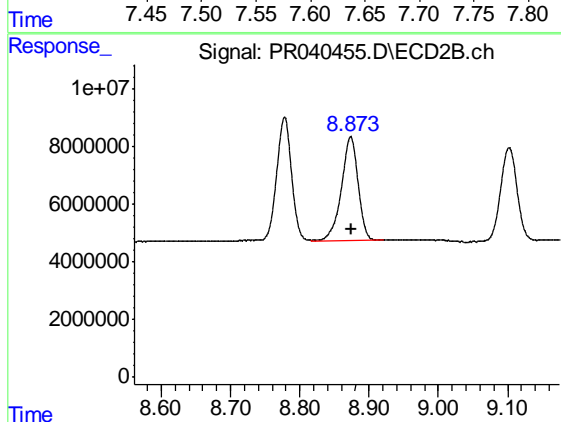
#41 AR-1268-1

R.T.: 8.778 min
 Delta R.T.: 0.000 min
 Response: 64431733
 Conc: 42.04 ng/ml



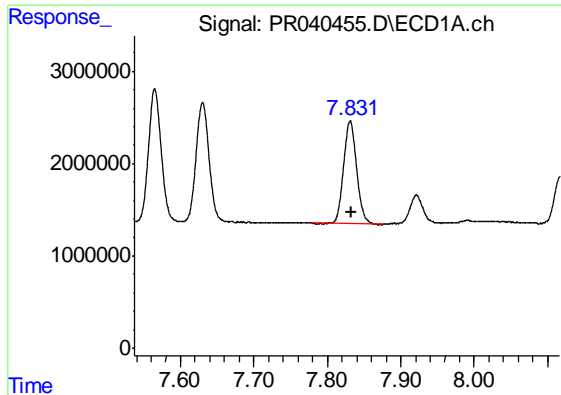
#42 AR-1268-2

R.T.: 7.630 min
 Delta R.T.: 0.000 min
 Response: 15952230
 Conc: 44.39 ng/ml



#42 AR-1268-2

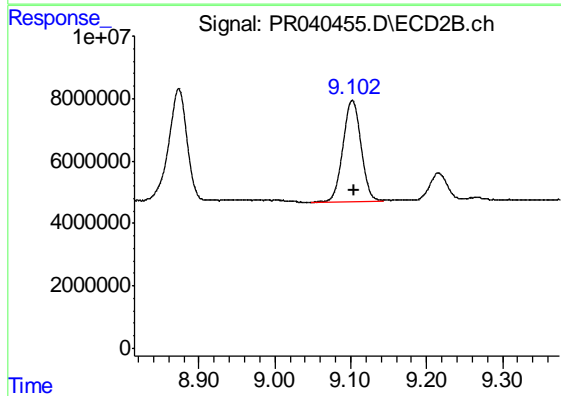
R.T.: 8.873 min
 Delta R.T.: -0.002 min
 Response: 60362896
 Conc: 41.29 ng/ml



#43 AR-1268-3

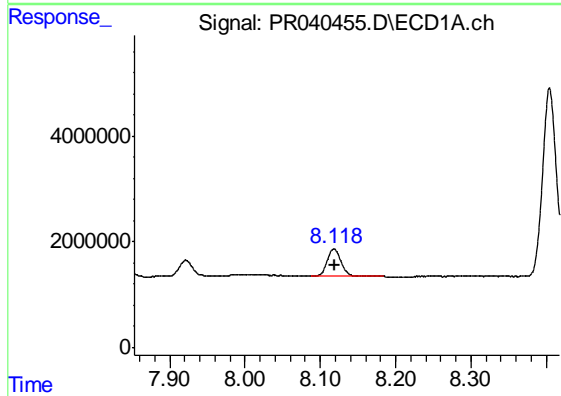
R.T.: 7.831 min
 Delta R.T.: 0.000 min
 Response: 13823892
 Conc: 47.32 ng/ml

Instrument :
 ECD_R
 ClientSampleId :
 LOD-MDL-SOIL-01-QT3-2019



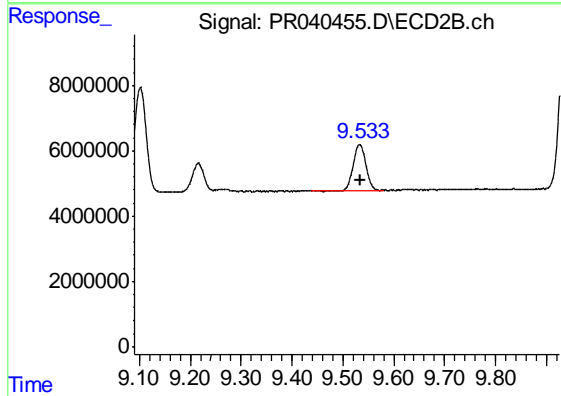
#43 AR-1268-3

R.T.: 9.102 min
 Delta R.T.: -0.001 min
 Response: 54281287
 Conc: 43.93 ng/ml



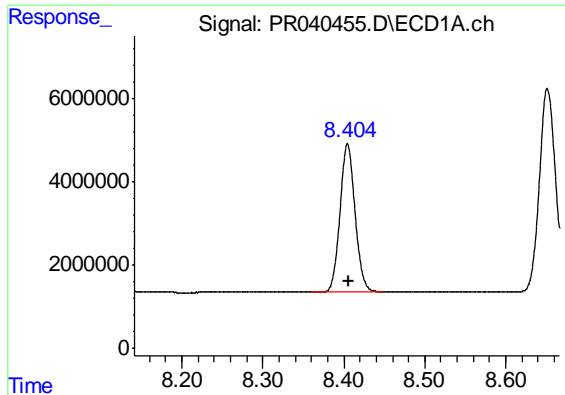
#44 AR-1268-4

R.T.: 8.118 min
 Delta R.T.: -0.001 min
 Response: 6717953
 Conc: 48.61 ng/ml



#44 AR-1268-4

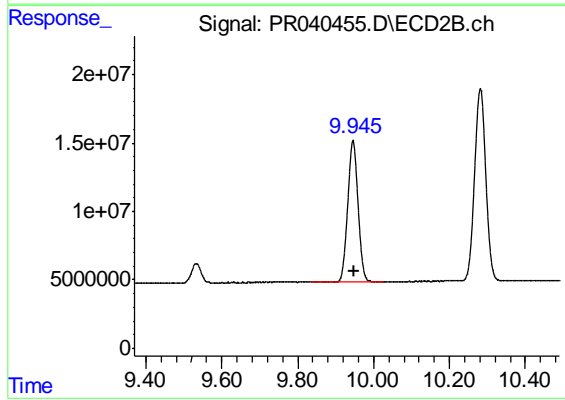
R.T.: 9.533 min
 Delta R.T.: -0.003 min
 Response: 24749346
 Conc: 43.14 ng/ml



#45 AR-1268-5

R.T.: 8.405 min
Delta R.T.: -0.002 min
Response: 46025197
Conc: 43.92 ng/ml

Instrument :
ECD_R
ClientSampleId :
LOD-MDL-SOIL-01-QT3-2019



#45 AR-1268-5

R.T.: 9.946 min
Delta R.T.: -0.002 min
Response: 194765152
Conc: 41.90 ng/ml