

Data Path : Z:\pestpcbsrv\HPCHEM1\ECD\_R\Data\PR082119\  
 Data File : PR040467.D  
 Signal(s) : Signal #1: ECD1A.ch Signal #2: ECD2B.ch  
 Acq On : 21 Aug 2019 13:30  
 Operator : SM\AJ  
 Sample : I.BLK  
 Misc :  
 ALS Vial : 2 Sample Multiplier: 1

Instrument :  
 ECD\_R  
 ClientSampleId :  
 I.BLK

Integration File signal 1: autoint1.e  
 Integration File signal 2: autoint2.e  
 Quant Time: Aug 22 08:02:16 2019  
 Quant Method : Z:\pestpcbsrv\HPCHEM1\ECD\_R\Method\PR082119.M  
 Quant Title : GC EXTRACTABLES  
 QLast Update : Thu Aug 22 08:00:11 2019  
 Response via : Initial Calibration  
 Integrator: ChemStation

Volume Inj. : 2 µl  
 Signal #1 Phase : ZB-MR1 Signal #2 Phase: ZB-MR2  
 Signal #1 Info : 30Mx0.32mmx 0.50µ Signal #2 Info : 30M x 0.32mm x 0.25µm

Compound	RT#1	RT#2	Resp#1	Resp#2	ng/ml	ng/ml
----------	------	------	--------	--------	-------	-------

-----  
 System Monitoring Compounds

1) SA Tetrachlo...	3.726	4.567	58490859	269.2E6	19.952	20.255
2) SA Decachlor...	8.651	10.276	71070622	313.4E6	19.203	20.707

Target Compounds  
 -----

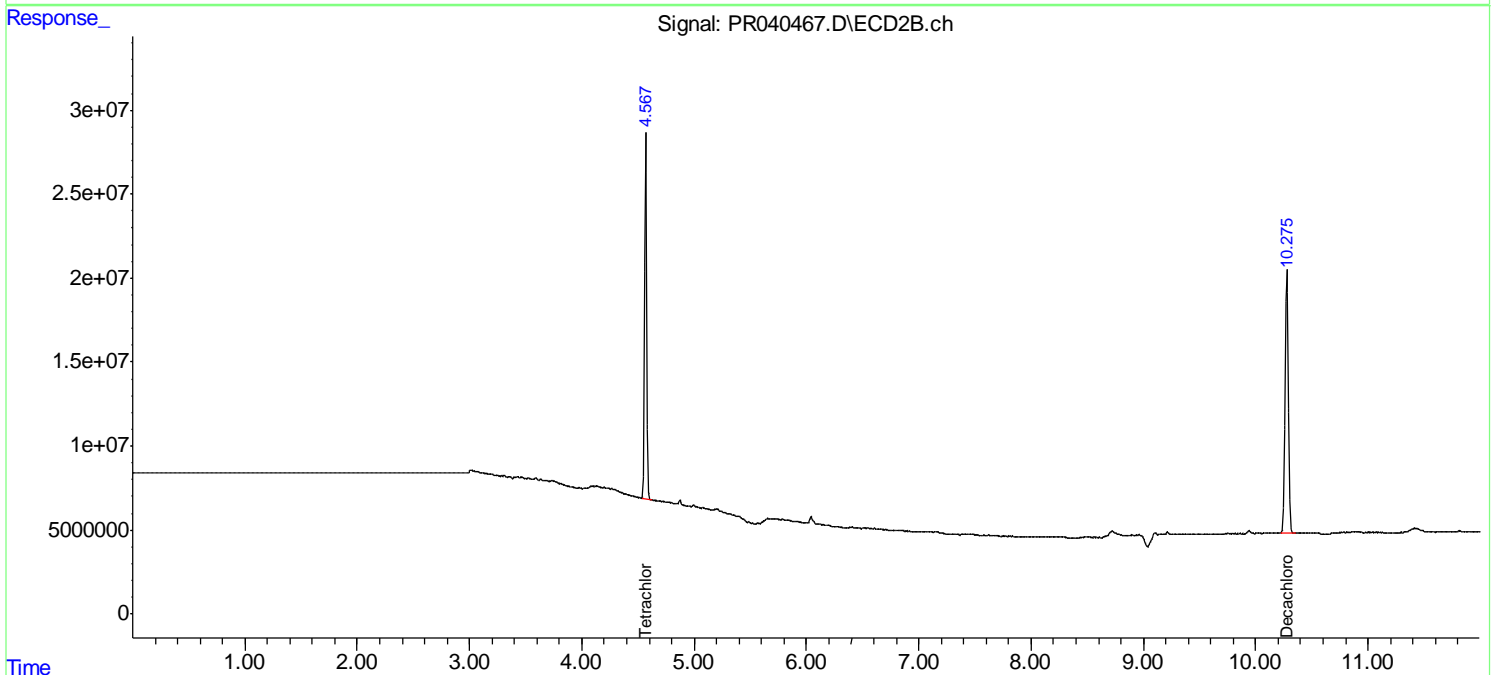
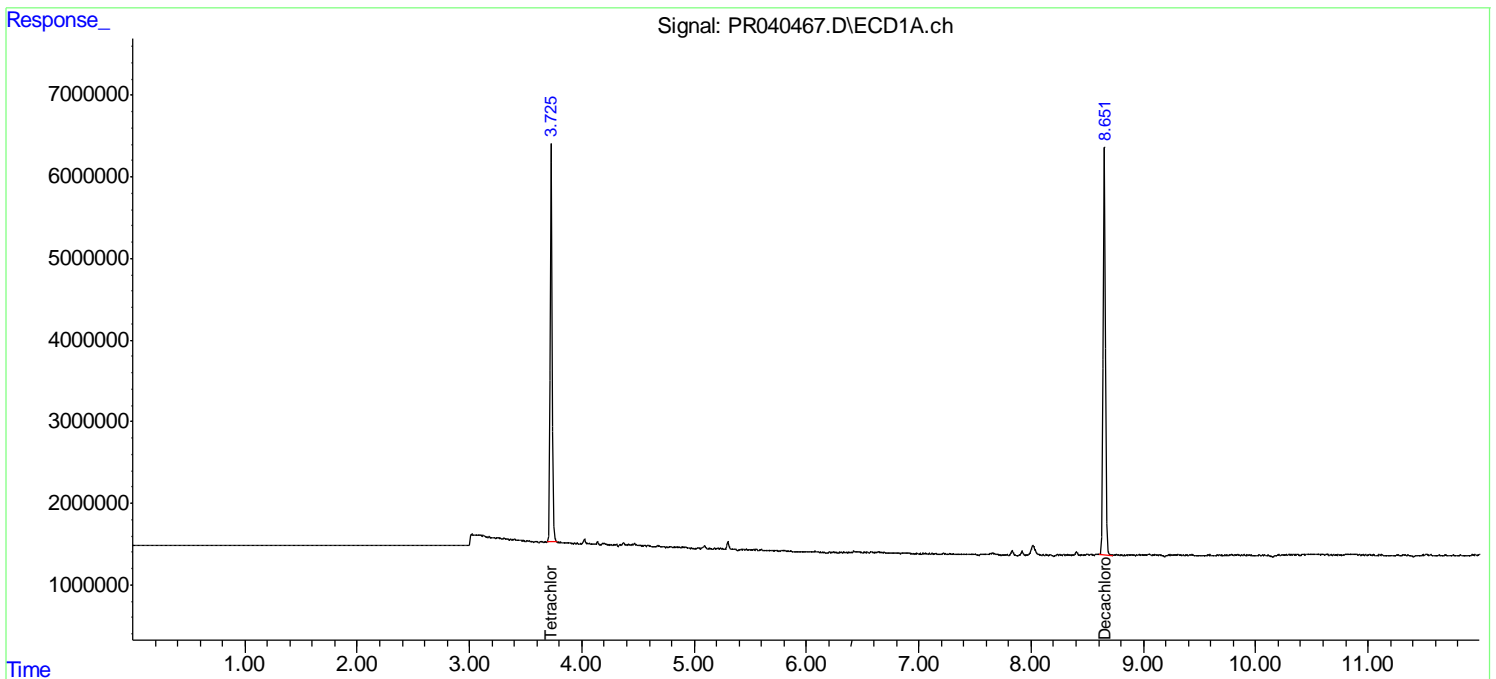
(f)=RT Delta > 1/2 Window (#)=Amounts differ by > 25% (m)=manual int.

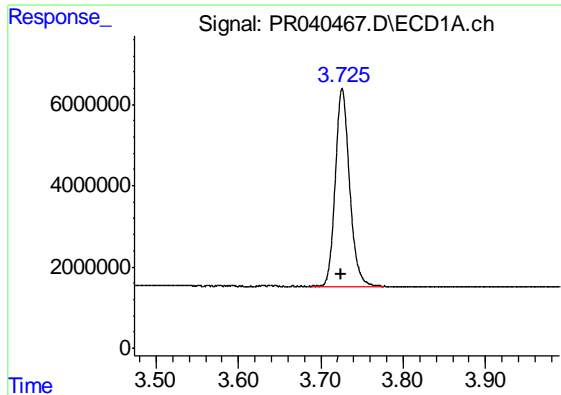
Data Path : Z:\pestpcbsrv\HPCHEM1\ECD\_R\Data\PR082119\  
 Data File : PR040467.D  
 Signal(s) : Signal #1: ECD1A.ch Signal #2: ECD2B.ch  
 Acq On : 21 Aug 2019 13:30  
 Operator : SM\AJ  
 Sample : I.BLK  
 Misc :  
 ALS Vial : 2 Sample Multiplier: 1

Instrument :  
 ECD\_R  
 ClientSampled :  
 I.BLK

Integration File signal 1: autoint1.e  
 Integration File signal 2: autoint2.e  
 Quant Time: Aug 22 08:02:16 2019  
 Quant Method : Z:\pestpcbsrv\HPCHEM1\ECD\_R\Method\PR082119.M  
 Quant Title : GC EXTRACTABLES  
 QLast Update : Thu Aug 22 08:00:11 2019  
 Response via : Initial Calibration  
 Integrator: ChemStation

Volume Inj. : 2 µl  
 Signal #1 Phase : ZB-MR1 Signal #2 Phase: ZB-MR2  
 Signal #1 Info : 30Mx0.32mmx 0.50µ Signal #2 Info : 30M x 0.32mm x 0.25µm

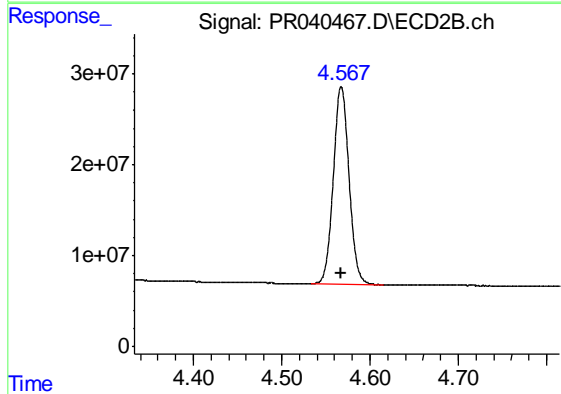




#1 Tetrachloro-m-xylene

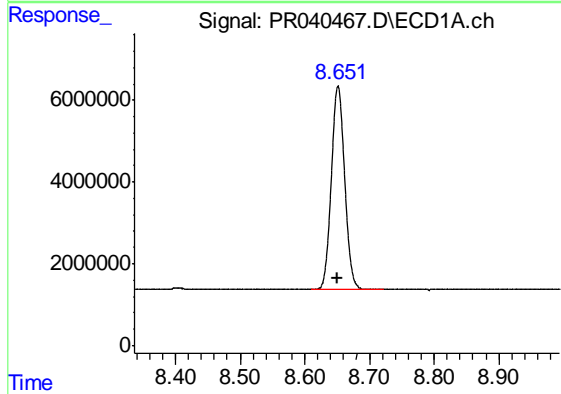
R.T.: 3.726 min  
 Delta R.T.: 0.000 min  
 Response: 58490859  
 Conc: 19.95 ng/ml

Instrument :  
 ECD\_R  
 ClientSampled :  
 I.BLK



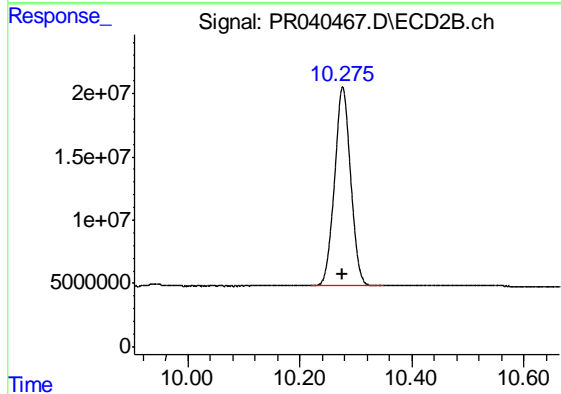
#1 Tetrachloro-m-xylene

R.T.: 4.567 min  
 Delta R.T.: 0.000 min  
 Response: 269231885  
 Conc: 20.25 ng/ml



#2 Decachlorobiphenyl

R.T.: 8.651 min  
 Delta R.T.: 0.002 min  
 Response: 71070622  
 Conc: 19.20 ng/ml



#2 Decachlorobiphenyl

R.T.: 10.276 min  
 Delta R.T.: 0.000 min  
 Response: 313378003  
 Conc: 20.71 ng/ml