

Data Path : Z:\pestpcbsrv\HPCHEM1\ECD_R\Data\PR082119\
 Data File : PR040470.D
 Signal(s) : Signal #1: ECD1A.ch Signal #2: ECD2B.ch
 Acq On : 21 Aug 2019 14:13
 Operator : SM\AJ
 Sample : AR1660ICC500
 Misc :
 ALS Vial : 5 Sample Multiplier: 1

Instrument :
 ECD_R
 ClientSampleId :
 AR1660ICC500

Integration File signal 1: autoint1.e
 Integration File signal 2: autoint2.e
 Quant Time: Aug 22 07:04:30 2019
 Quant Method : Z:\pestpcbsrv\HPCHEM1\ECD_R\Method\PR082119.M
 Quant Title : GC EXTRACTABLES
 QLast Update : Thu Aug 22 07:01:49 2019
 Response via : Initial Calibration
 Integrator: ChemStation

Volume Inj. : 2 µl
 Signal #1 Phase : ZB-MR1 Signal #2 Phase: ZB-MR2
 Signal #1 Info : 30Mx0.32mmx 0.50µ Signal #2 Info : 30M x 0.32mm x 0.25µm

Compound	RT#1	RT#2	Resp#1	Resp#2	ng/ml	ng/ml

System Monitoring Compounds						
1) SA Tetrachlo...	3.725	4.568	152.3E6	685.7E6	50.000	50.000
2) SA Decachlor...	8.649	10.274	179.6E6	720.9E6	50.000	50.000
Target Compounds						
3) L1 AR-1016-1	4.792	5.723	50742191	225.2E6	500.000	500.000
4) L1 AR-1016-2	4.808	5.745	86511560	331.0E6	500.000	500.000
5) L1 AR-1016-3	4.982	5.806	41640064	198.2E6	500.000	500.000
6) L1 AR-1016-4	5.022	5.905	32869712	166.4E6	500.000	500.000
7) L1 AR-1016-5	5.232	6.194	43815010	157.4E6	500.000	500.000
31) L7 AR-1260-1	6.245	7.304	86452608	283.0E6	500.000	500.000
32) L7 AR-1260-2	6.429	7.557	108.3E6	353.7E6	500.000	500.000
33) L7 AR-1260-3	6.581	7.911	100.2E6	276.9E6	500.000	500.000
34) L7 AR-1260-4	7.045	8.138	86264776	319.5E6	500.000	500.000
35) L7 AR-1260-5	7.284	8.462	221.8E6	704.8E6	500.000	500.000

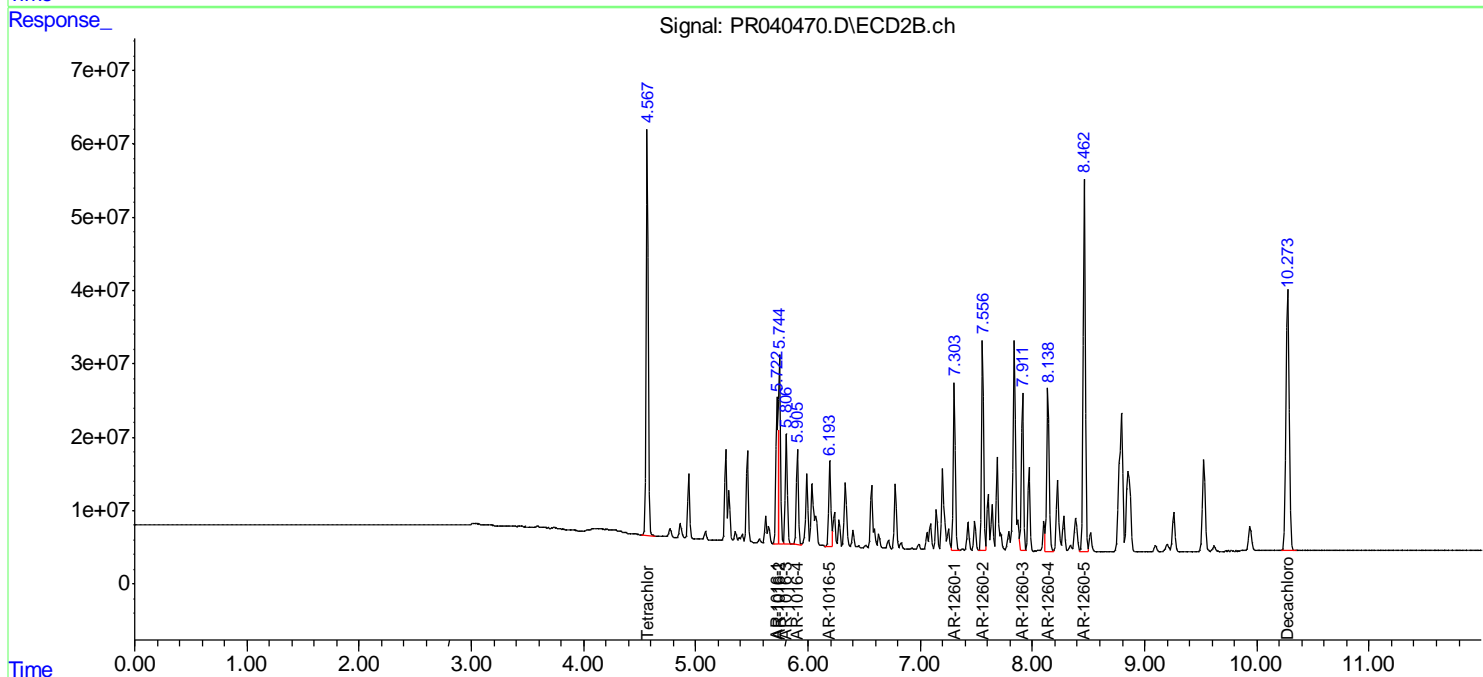
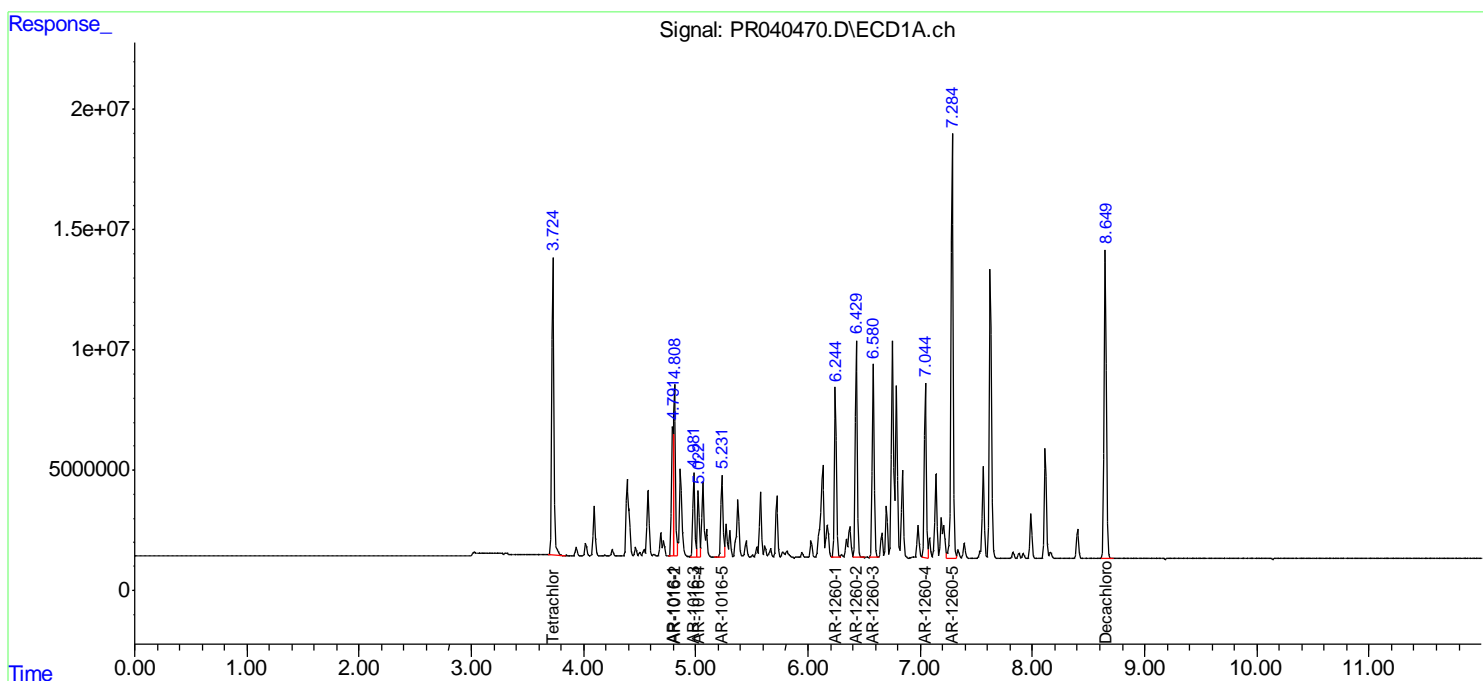
(f)=RT Delta > 1/2 Window (#)=Amounts differ by > 25% (m)=manual int.

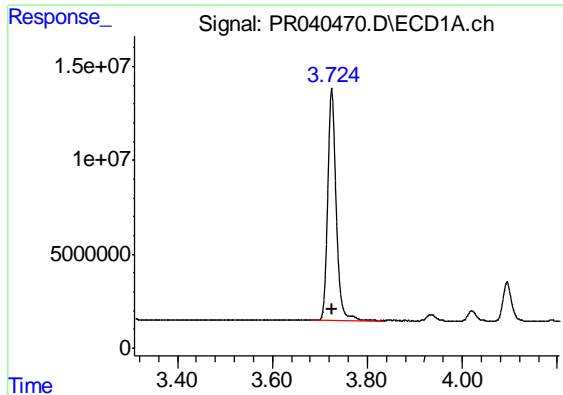
Data Path : Z:\pestpcbsrv\HPCHEM1\ECD_R\Data\PR082119\
 Data File : PR040470.D
 Signal(s) : Signal #1: ECD1A.ch Signal #2: ECD2B.ch
 Acq On : 21 Aug 2019 14:13
 Operator : SM\AJ
 Sample : AR1660ICC500
 Misc :
 ALS Vial : 5 Sample Multiplier: 1

Instrument :
 ECD_R
 ClientSampled :
 AR1660ICC500

Integration File signal 1: autoint1.e
 Integration File signal 2: autoint2.e
 Quant Time: Aug 22 07:04:30 2019
 Quant Method : Z:\pestpcbsrv\HPCHEM1\ECD_R\Method\PR082119.M
 Quant Title : GC EXTRACTABLES
 QLast Update : Thu Aug 22 07:01:49 2019
 Response via : Initial Calibration
 Integrator: ChemStation

Volume Inj. : 2 µl
 Signal #1 Phase : ZB-MR1 Signal #2 Phase: ZB-MR2
 Signal #1 Info : 30Mx0.32mmx 0.50µ Signal #2 Info : 30M x 0.32mm x 0.25µm

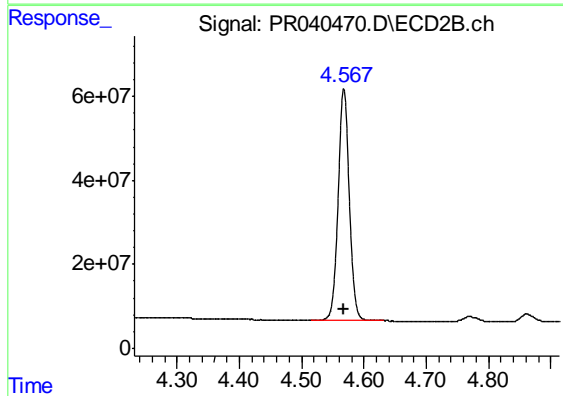




#1 Tetrachloro-m-xylene

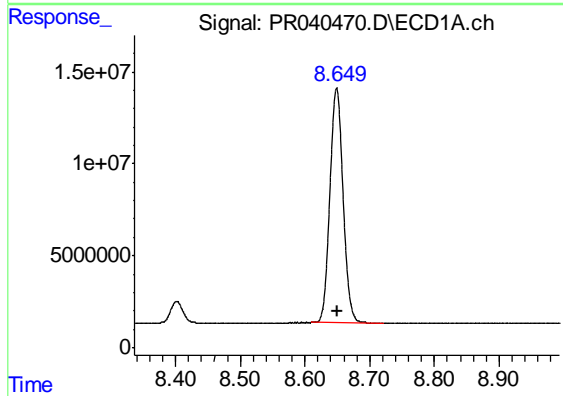
R.T.: 3.725 min
Delta R.T.: 0.000 min
Response: 152309517
Conc: 50.00 ng/ml

Instrument :
ECD_R
ClientSampleId :
AR1660ICC500



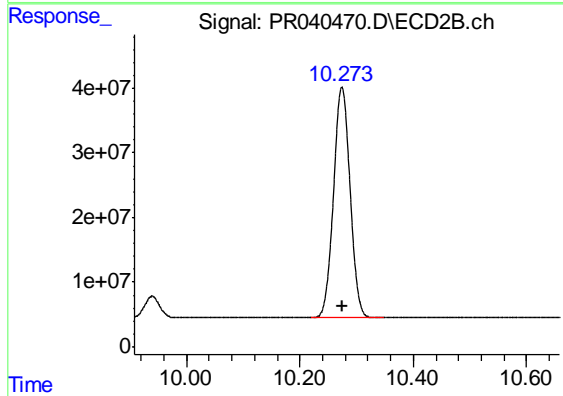
#1 Tetrachloro-m-xylene

R.T.: 4.568 min
Delta R.T.: 0.000 min
Response: 685724914
Conc: 50.00 ng/ml



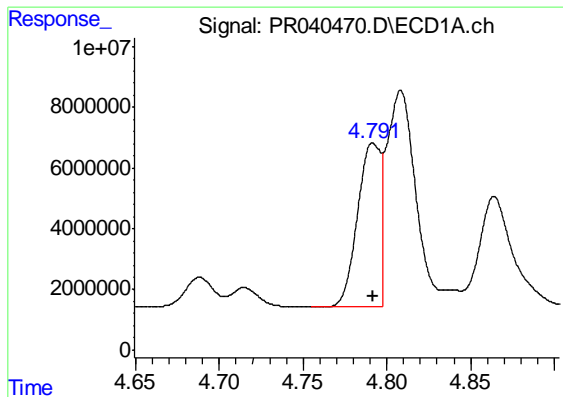
#2 Decachlorobiphenyl

R.T.: 8.649 min
Delta R.T.: 0.000 min
Response: 179640835
Conc: 50.00 ng/ml



#2 Decachlorobiphenyl

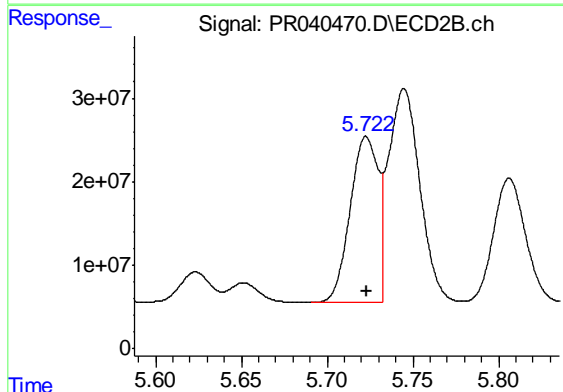
R.T.: 10.274 min
Delta R.T.: 0.000 min
Response: 720891633
Conc: 50.00 ng/ml



#3 AR-1016-1

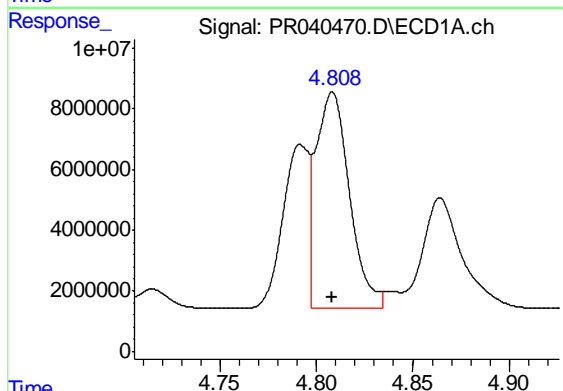
R.T.: 4.792 min
 Delta R.T.: 0.000 min
 Response: 50742191
 Conc: 500.00 ng/ml

Instrument :
 ECD_R
 ClientSampleId :
 AR1660ICC500



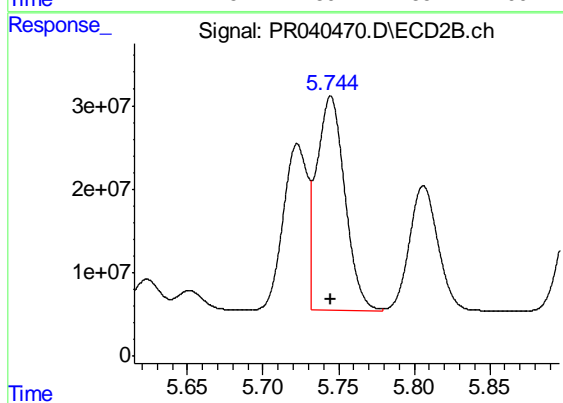
#3 AR-1016-1

R.T.: 5.723 min
 Delta R.T.: 0.000 min
 Response: 225165763
 Conc: 500.00 ng/ml



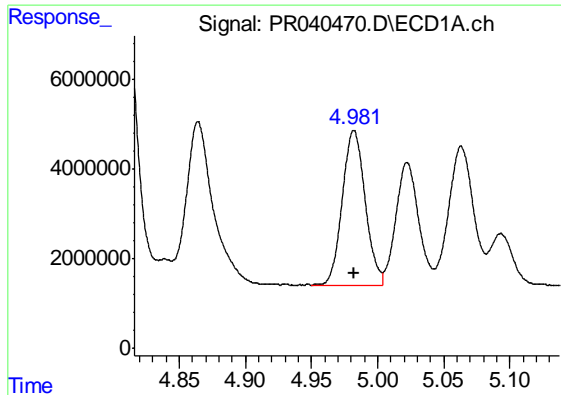
#4 AR-1016-2

R.T.: 4.808 min
 Delta R.T.: 0.000 min
 Response: 86511560
 Conc: 500.00 ng/ml



#4 AR-1016-2

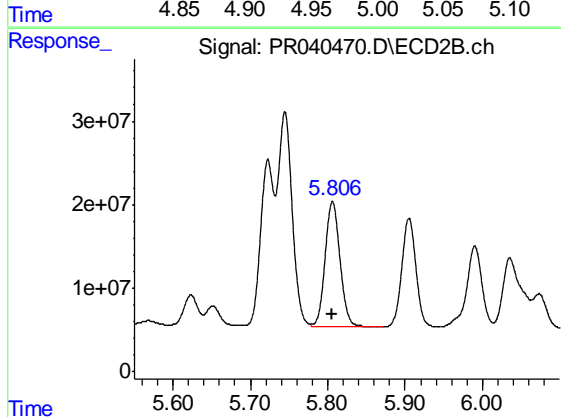
R.T.: 5.745 min
 Delta R.T.: 0.000 min
 Response: 330986297
 Conc: 500.00 ng/ml



#5 AR-1016-3

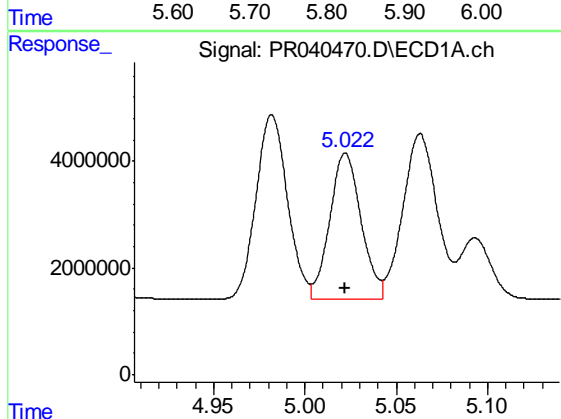
R.T.: 4.982 min
 Delta R.T.: 0.000 min
 Response: 41640064
 Conc: 500.00 ng/ml

Instrument :
 ECD_R
 ClientSampleId :
 AR1660ICC500



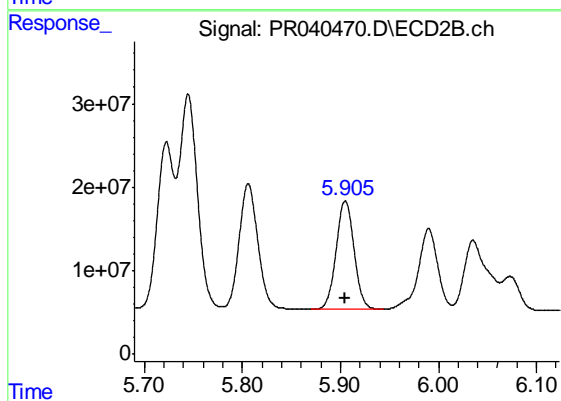
#5 AR-1016-3

R.T.: 5.806 min
 Delta R.T.: 0.000 min
 Response: 198190939
 Conc: 500.00 ng/ml



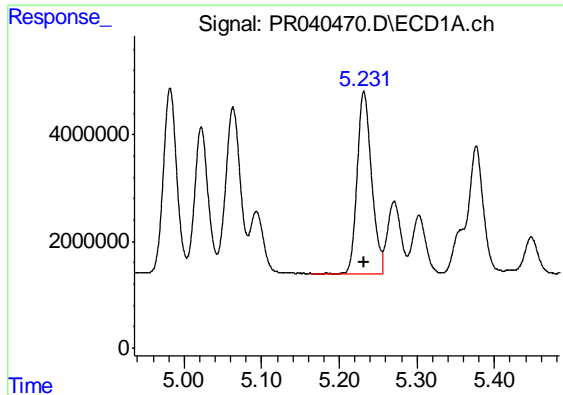
#6 AR-1016-4

R.T.: 5.022 min
 Delta R.T.: 0.000 min
 Response: 32869712
 Conc: 500.00 ng/ml



#6 AR-1016-4

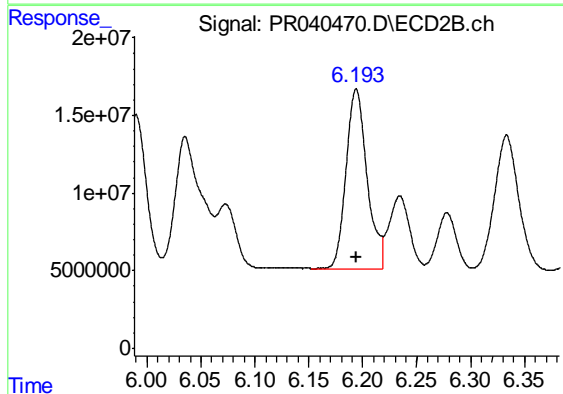
R.T.: 5.905 min
 Delta R.T.: 0.000 min
 Response: 166439041
 Conc: 500.00 ng/ml



#7 AR-1016-5

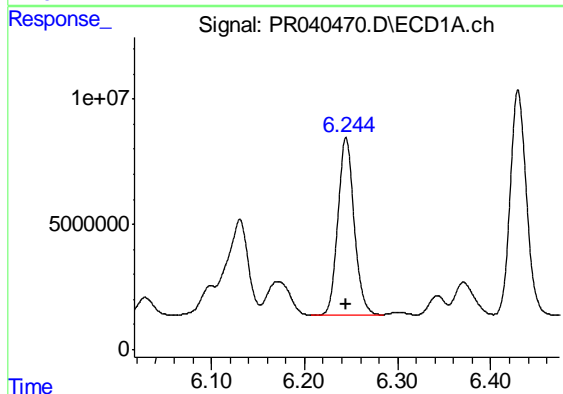
R.T.: 5.232 min
Delta R.T.: 0.000 min
Response: 43815010
Conc: 500.00 ng/ml

Instrument :
ECD_R
ClientSampleId :
AR1660ICC500



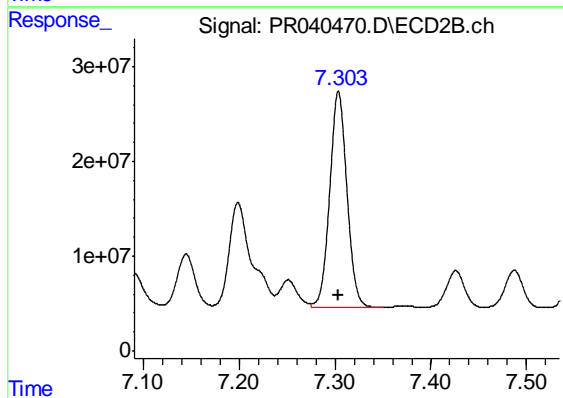
#7 AR-1016-5

R.T.: 6.194 min
Delta R.T.: 0.000 min
Response: 157370904
Conc: 500.00 ng/ml



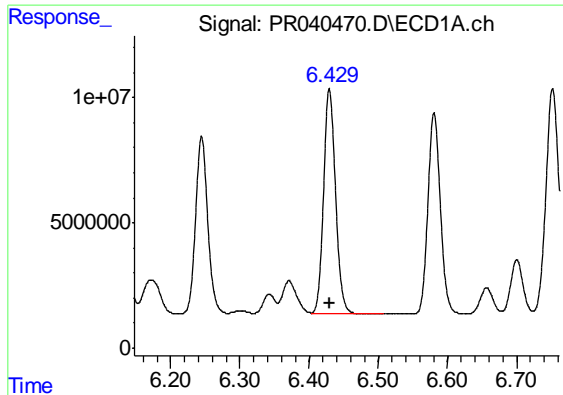
#31 AR-1260-1

R.T.: 6.245 min
Delta R.T.: 0.000 min
Response: 86452608
Conc: 500.00 ng/ml



#31 AR-1260-1

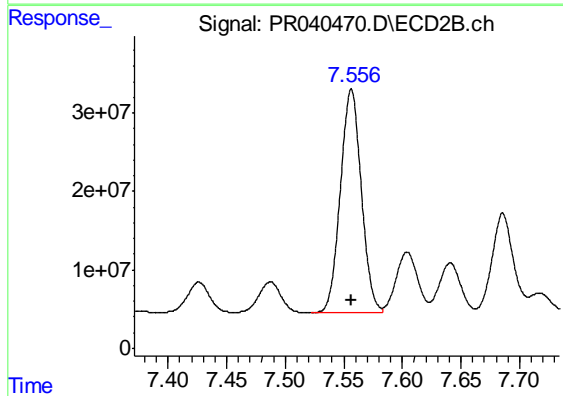
R.T.: 7.304 min
Delta R.T.: 0.000 min
Response: 283013260
Conc: 500.00 ng/ml



#32 AR-1260-2

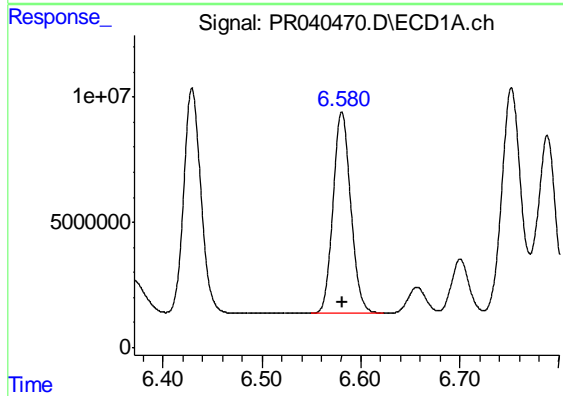
R.T.: 6.429 min
 Delta R.T.: 0.000 min
 Response: 108340061
 Conc: 500.00 ng/ml

Instrument :
 ECD_R
 ClientSampleId :
 AR1660ICC500



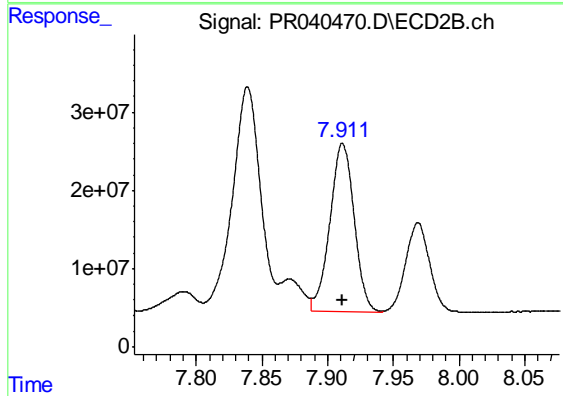
#32 AR-1260-2

R.T.: 7.557 min
 Delta R.T.: 0.000 min
 Response: 353669537
 Conc: 500.00 ng/ml



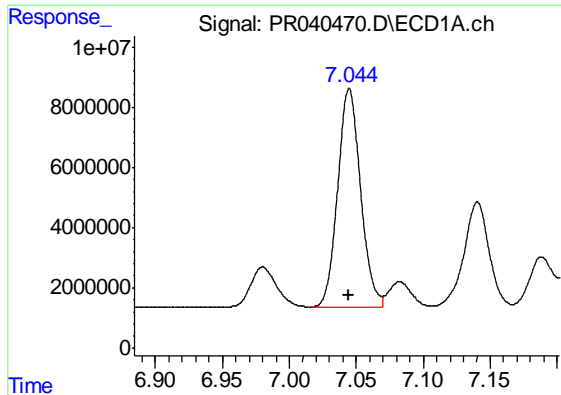
#33 AR-1260-3

R.T.: 6.581 min
 Delta R.T.: 0.000 min
 Response: 100229840
 Conc: 500.00 ng/ml



#33 AR-1260-3

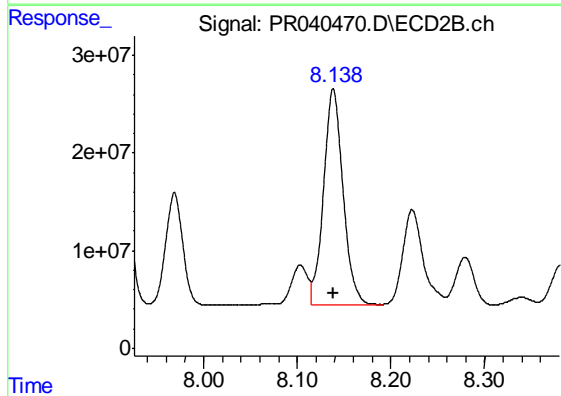
R.T.: 7.911 min
 Delta R.T.: 0.000 min
 Response: 276909057
 Conc: 500.00 ng/ml



#34 AR-1260-4

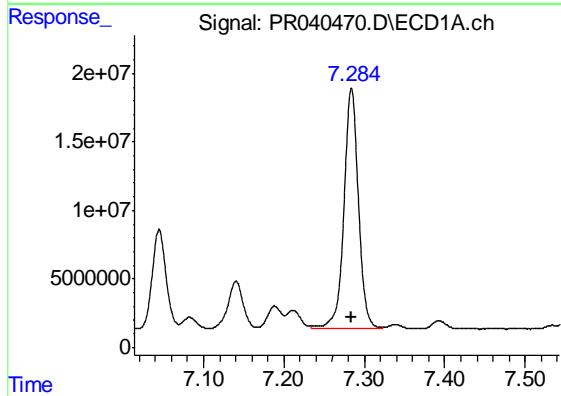
R.T.: 7.045 min
 Delta R.T.: 0.000 min
 Response: 86264776
 Conc: 500.00 ng/ml

Instrument :
 ECD_R
 ClientSampleId :
 AR1660ICC500



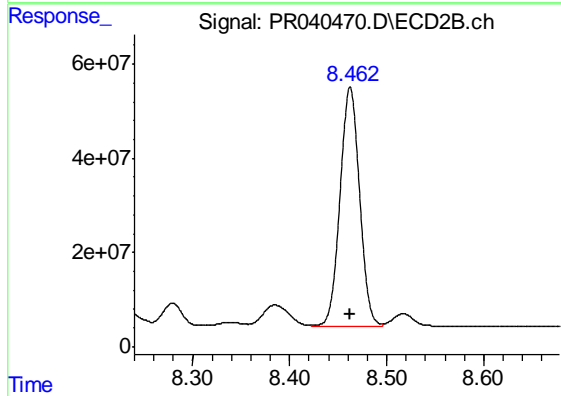
#34 AR-1260-4

R.T.: 8.138 min
 Delta R.T.: 0.000 min
 Response: 319510624
 Conc: 500.00 ng/ml



#35 AR-1260-5

R.T.: 7.284 min
 Delta R.T.: 0.000 min
 Response: 221750524
 Conc: 500.00 ng/ml



#35 AR-1260-5

R.T.: 8.462 min
 Delta R.T.: 0.000 min
 Response: 704810562
 Conc: 500.00 ng/ml