

Data Path : Z:\pestpcbsrv\HPCHEM1\ECD_R\Data\PR082119\
 Data File : PR040475.D
 Signal(s) : Signal #1: ECD1A.ch Signal #2: ECD2B.ch
 Acq On : 21 Aug 2019 15:25
 Operator : SM\AJ
 Sample : AR1242ICC500
 Misc :
 ALS Vial : 10 Sample Multiplier: 1

Instrument :
 ECD_R
 ClientSampleId :
 AR1242ICC500

Integration File signal 1: autoint1.e
 Integration File signal 2: autoint2.e
 Quant Time: Aug 22 07:33:20 2019
 Quant Method : Z:\pestpcbsrv\HPCHEM1\ECD_R\Method\PR082119.M
 Quant Title : GC EXTRACTABLES
 QLast Update : Thu Aug 22 07:32:56 2019
 Response via : Initial Calibration
 Integrator: ChemStation

Volume Inj. : 2 µl
 Signal #1 Phase : ZB-MR1 Signal #2 Phase: ZB-MR2
 Signal #1 Info : 30Mx0.32mmx 0.50µ Signal #2 Info : 30M x 0.32mm x 0.25µm

Compound	RT#1	RT#2	Resp#1	Resp#2	ng/ml	ng/ml

System Monitoring Compounds						
1) SA Tetrachlo...	3.726	4.568	135.5E6	606.1E6	50.000	50.000
2) SA Decachlor...	8.648	10.273	174.0E6	692.2E6	50.000	50.000
Target Compounds						
16) L4 AR-1242-1	4.792	5.723	37706893	162.3E6	500.000	500.000
17) L4 AR-1242-2	4.809	5.745	61540737	237.5E6	500.000	500.000
18) L4 AR-1242-3	4.983	5.807	30487186	143.5E6	500.000	500.000
19) L4 AR-1242-4	5.063	5.905	29543526	120.3E6	500.000	500.000
20) L4 AR-1242-5	5.576	6.631	41566136	136.2E6	500.000	500.000

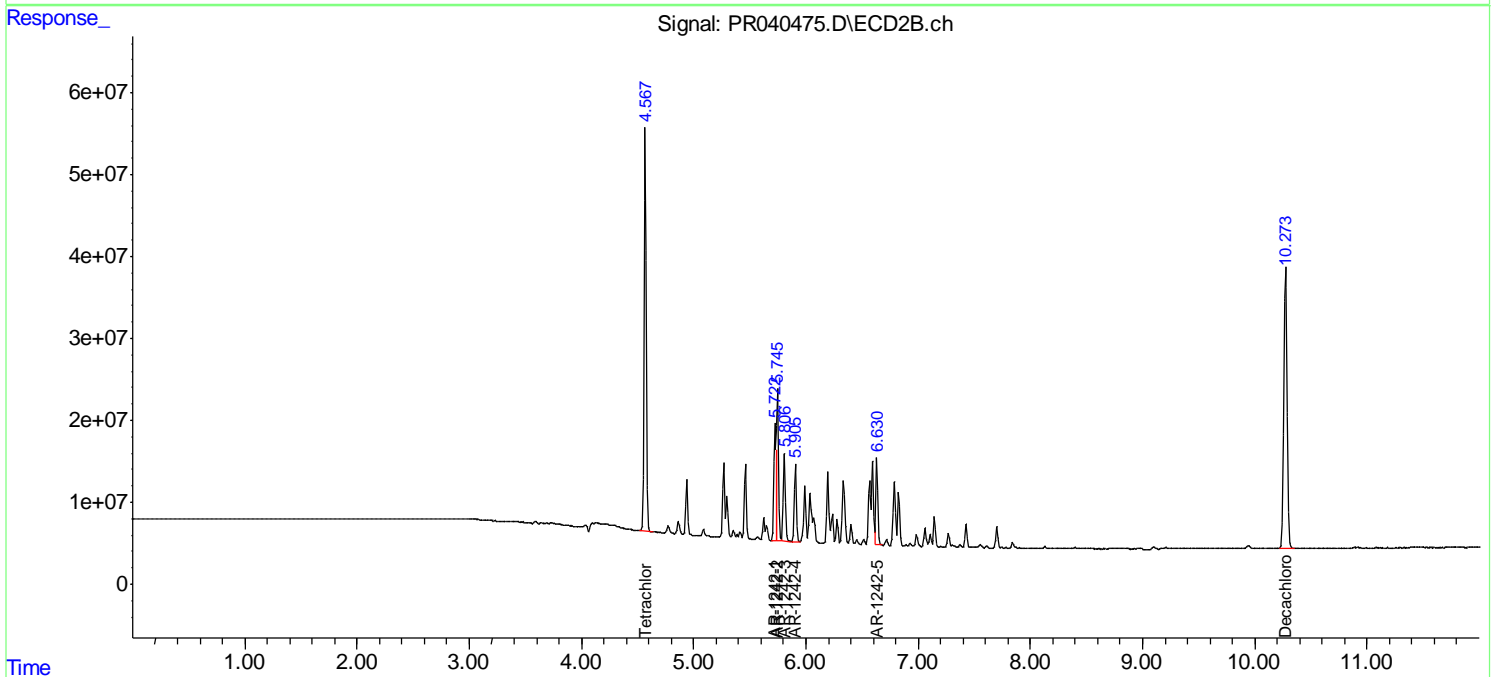
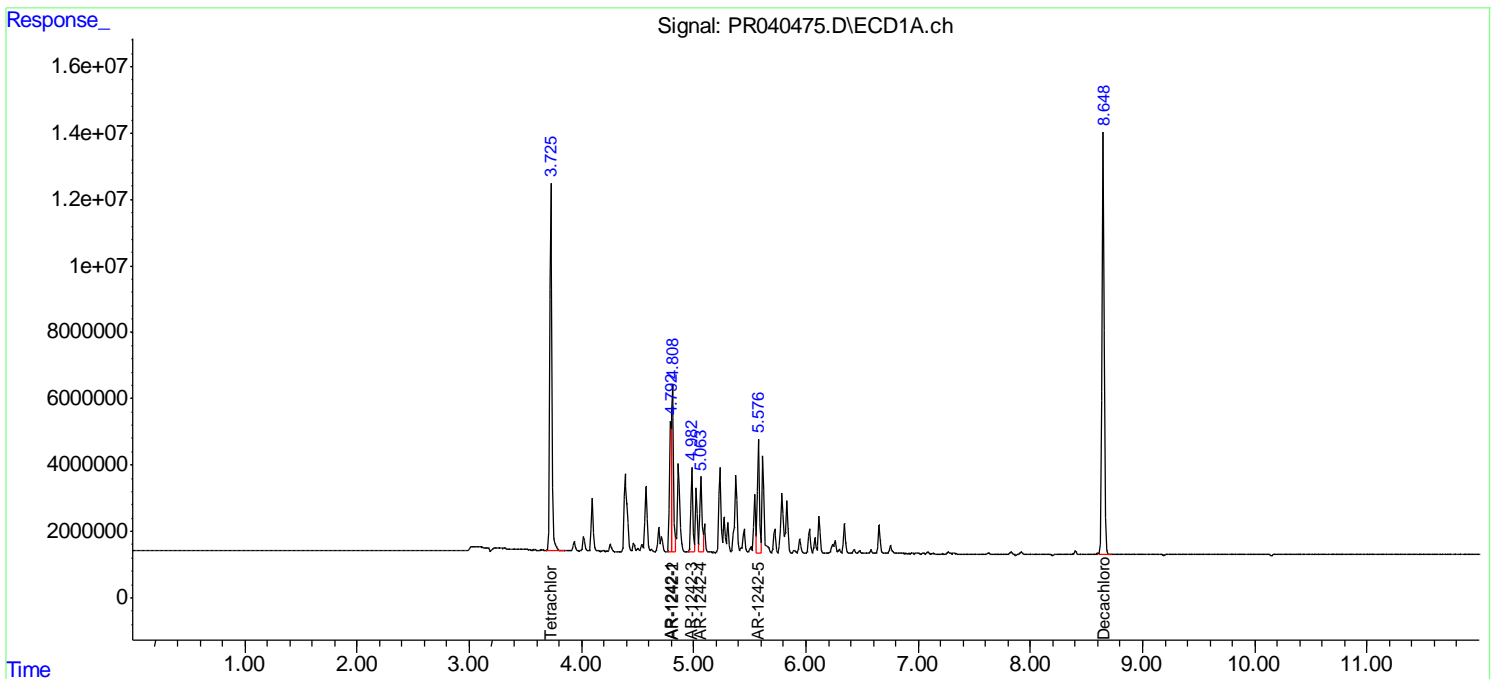
(f)=RT Delta > 1/2 Window (#)=Amounts differ by > 25% (m)=manual int.

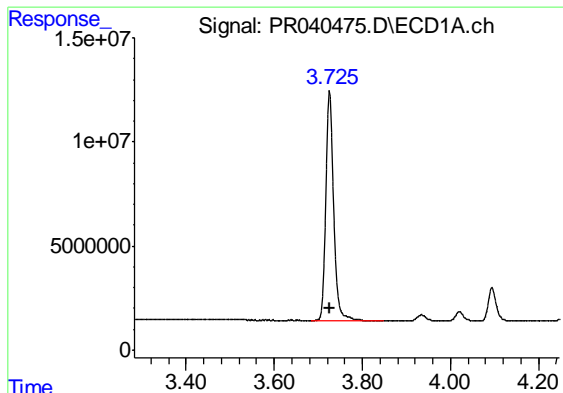
Data Path : Z:\pestpcbsrv\HPCHEM1\ECD_R\Data\PR082119\
 Data File : PR040475.D
 Signal(s) : Signal #1: ECD1A.ch Signal #2: ECD2B.ch
 Acq On : 21 Aug 2019 15:25
 Operator : SM\AJ
 Sample : AR1242ICC500
 Misc :
 ALS Vial : 10 Sample Multiplier: 1

Instrument :
 ECD_R
 ClientSampled :
 AR1242ICC500

Integration File signal 1: autoint1.e
 Integration File signal 2: autoint2.e
 Quant Time: Aug 22 07:33:20 2019
 Quant Method : Z:\pestpcbsrv\HPCHEM1\ECD_R\Method\PR082119.M
 Quant Title : GC EXTRACTABLES
 QLast Update : Thu Aug 22 07:32:56 2019
 Response via : Initial Calibration
 Integrator: ChemStation

Volume Inj. : 2 µl
 Signal #1 Phase : ZB-MR1 Signal #2 Phase: ZB-MR2
 Signal #1 Info : 30Mx0.32mmx 0.50µ Signal #2 Info : 30M x 0.32mm x 0.25µm

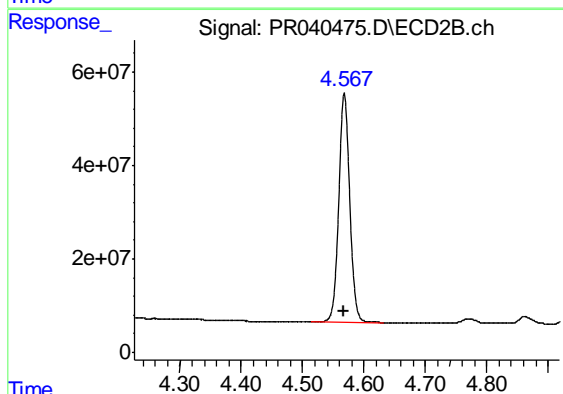




#1 Tetrachloro-m-xylene

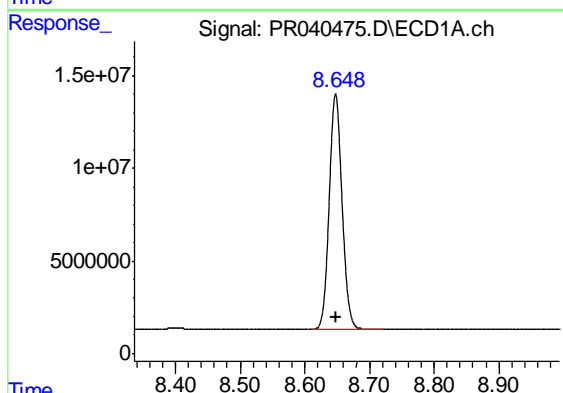
R.T.: 3.726 min
Delta R.T.: 0.000 min
Response: 135469448
Conc: 50.00 ng/ml

Instrument :
ECD_R
ClientSampleId :
AR1242ICC500



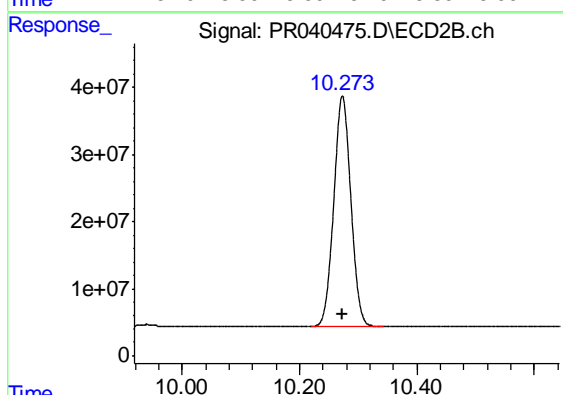
#1 Tetrachloro-m-xylene

R.T.: 4.568 min
Delta R.T.: 0.000 min
Response: 606074539
Conc: 50.00 ng/ml



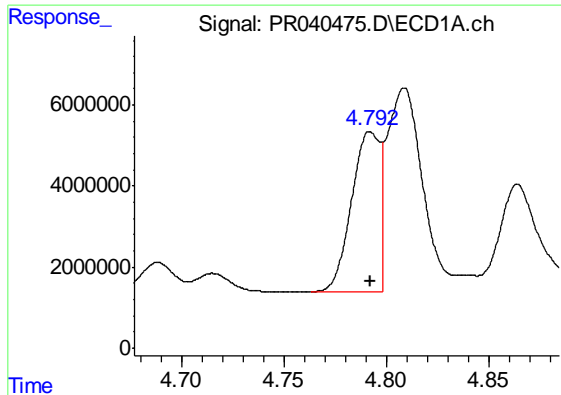
#2 Decachlorobiphenyl

R.T.: 8.648 min
Delta R.T.: 0.000 min
Response: 173951117
Conc: 50.00 ng/ml



#2 Decachlorobiphenyl

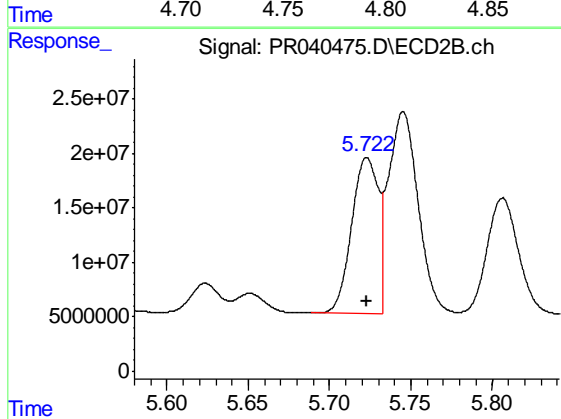
R.T.: 10.273 min
Delta R.T.: 0.000 min
Response: 692219284
Conc: 50.00 ng/ml



#16 AR-1242-1

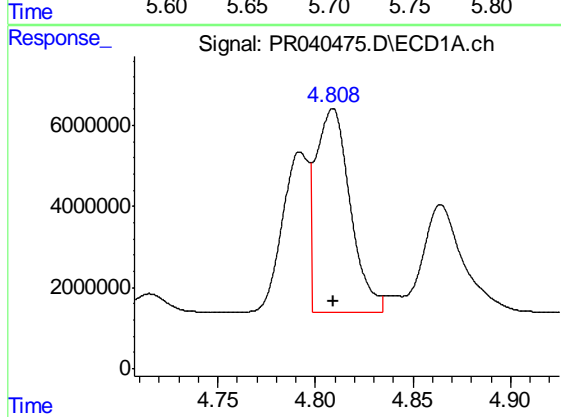
R.T.: 4.792 min
 Delta R.T.: 0.000 min
 Response: 37706893
 Conc: 500.00 ng/ml

Instrument :
 ECD_R
 ClientSampleId :
 AR1242ICC500



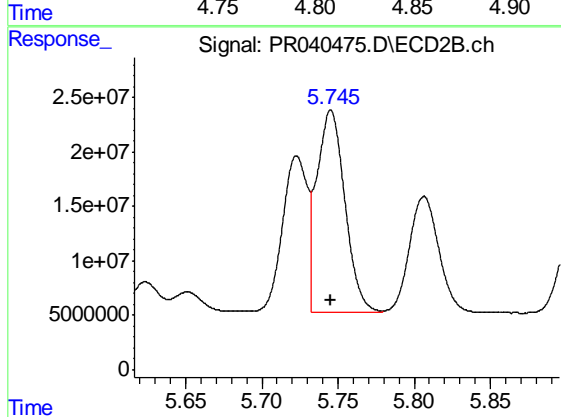
#16 AR-1242-1

R.T.: 5.723 min
 Delta R.T.: 0.000 min
 Response: 162331234
 Conc: 500.00 ng/ml



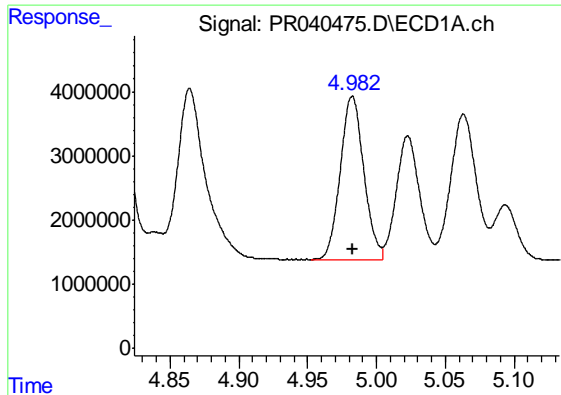
#17 AR-1242-2

R.T.: 4.809 min
 Delta R.T.: 0.000 min
 Response: 61540737
 Conc: 500.00 ng/ml



#17 AR-1242-2

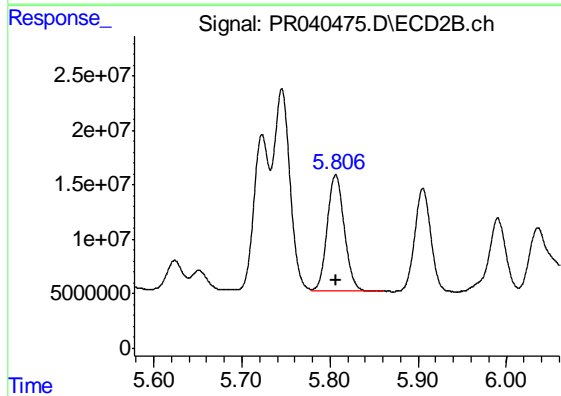
R.T.: 5.745 min
 Delta R.T.: 0.000 min
 Response: 237464601
 Conc: 500.00 ng/ml



#18 AR-1242-3

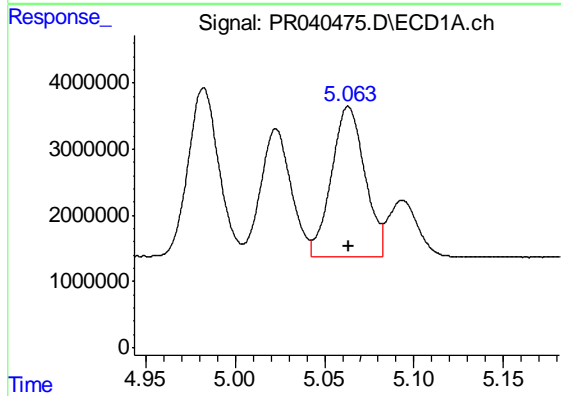
R.T.: 4.983 min
Delta R.T.: 0.000 min
Response: 30487186
Conc: 500.00 ng/ml

Instrument :
ECD_R
ClientSampleId :
AR1242ICC500



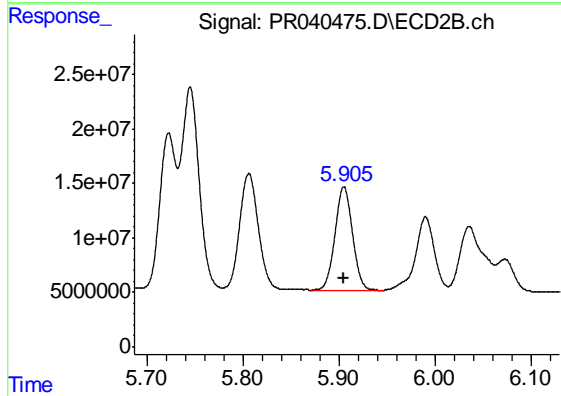
#18 AR-1242-3

R.T.: 5.807 min
Delta R.T.: 0.000 min
Response: 143524147
Conc: 500.00 ng/ml



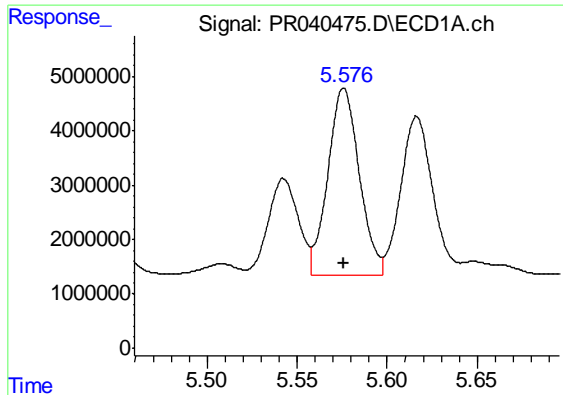
#19 AR-1242-4

R.T.: 5.063 min
Delta R.T.: 0.000 min
Response: 29543526
Conc: 500.00 ng/ml



#19 AR-1242-4

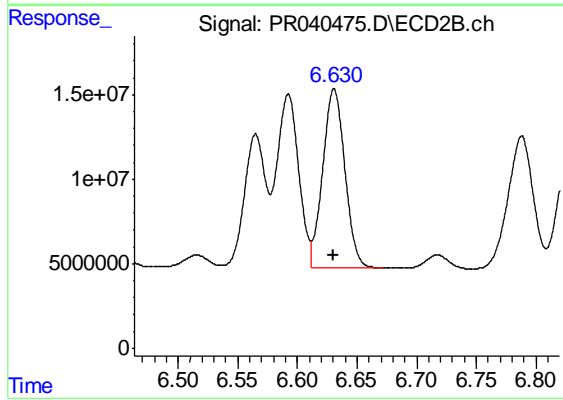
R.T.: 5.905 min
Delta R.T.: 0.000 min
Response: 120272876
Conc: 500.00 ng/ml



#20 AR-1242-5

R.T.: 5.576 min
Delta R.T.: 0.000 min
Response: 41566136
Conc: 500.00 ng/ml

Instrument :
ECD_R
ClientSampleId :
AR1242ICC500



#20 AR-1242-5

R.T.: 6.631 min
Delta R.T.: 0.000 min
Response: 136223113
Conc: 500.00 ng/ml