

Data Path : Z:\pestpcbsrv\HPCHEM1\ECD\_R\Data\PR082119\  
 Data File : PR040476.D  
 Signal(s) : Signal #1: ECD1A.ch Signal #2: ECD2B.ch  
 Acq On : 21 Aug 2019 15:40  
 Operator : SM\AJ  
 Sample : AR1248ICC500  
 Misc :  
 ALS Vial : 11 Sample Multiplier: 1

Instrument :  
 ECD\_R  
 ClientSampleId :  
 AR1248ICC500

Integration File signal 1: autoint1.e  
 Integration File signal 2: autoint2.e  
 Quant Time: Aug 22 07:36:21 2019  
 Quant Method : Z:\pestpcbsrv\HPCHEM1\ECD\_R\Method\PR082119.M  
 Quant Title : GC EXTRACTABLES  
 QLast Update : Thu Aug 22 07:36:05 2019  
 Response via : Initial Calibration  
 Integrator: ChemStation

Volume Inj. : 2 µl  
 Signal #1 Phase : ZB-MR1 Signal #2 Phase: ZB-MR2  
 Signal #1 Info : 30Mx0.32mmx 0.50µ Signal #2 Info : 30M x 0.32mm x 0.25µm

Compound	RT#1	RT#2	Resp#1	Resp#2	ng/ml	ng/ml
-----						
System Monitoring Compounds						
1) SA Tetrachlo...	3.727	4.569	118.6E6	537.5E6	50.000	50.000
2) SA Decachlor...	8.648	10.273	171.4E6	679.3E6	50.000	50.000
Target Compounds						
21) L5 AR-1248-1	4.792	5.723	24918819	106.1E6	500.000	500.000
22) L5 AR-1248-2	5.023	5.991	34966049	140.9E6	500.000	500.000
23) L5 AR-1248-3	5.063	6.193	36433609	163.5E6	500.000	500.000
24) L5 AR-1248-4	5.232	6.593	45456904	200.8E6	500.000	500.000
25) L5 AR-1248-5	5.616	6.631	49245599	192.6E6	500.000	500.000
-----						

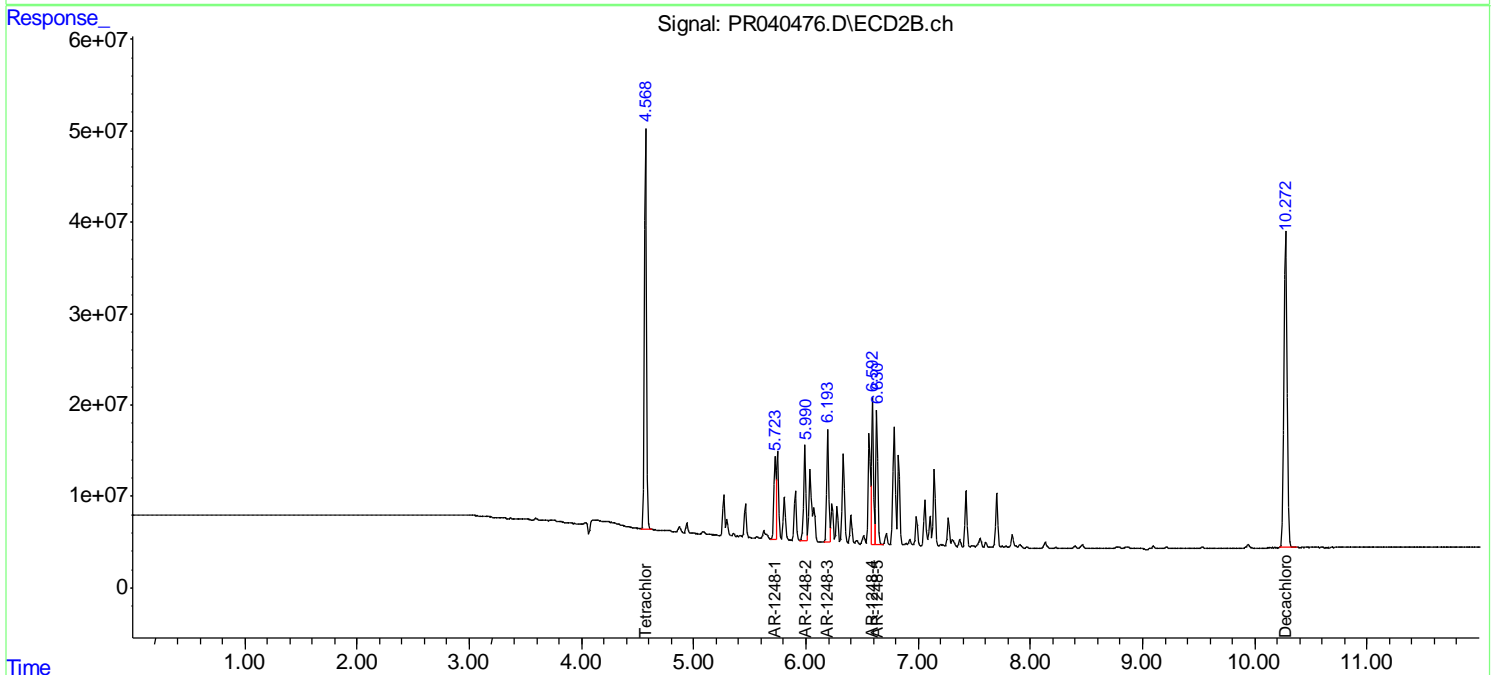
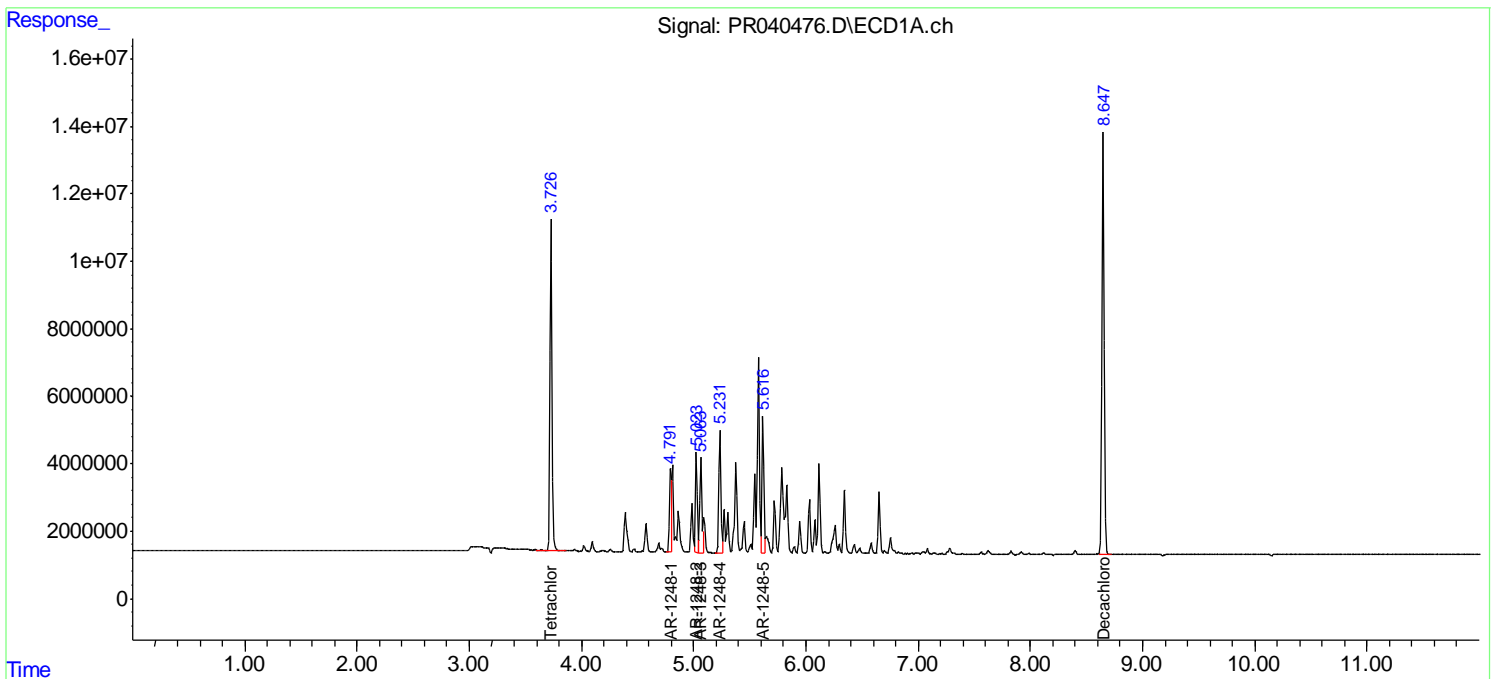
(f)=RT Delta > 1/2 Window (#)=Amounts differ by > 25% (m)=manual int.

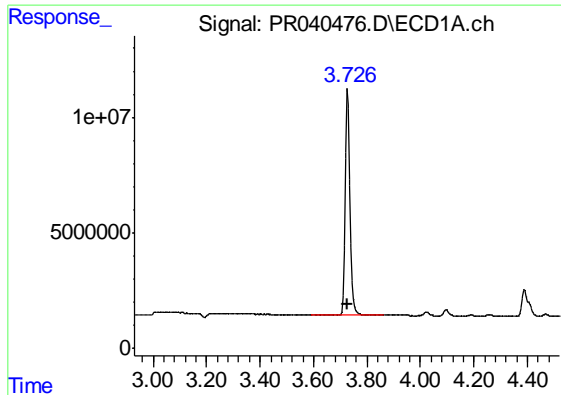
Data Path : Z:\pestpcbsrv\HPCHEM1\ECD\_R\Data\PR082119\  
 Data File : PR040476.D  
 Signal(s) : Signal #1: ECD1A.ch Signal #2: ECD2B.ch  
 Acq On : 21 Aug 2019 15:40  
 Operator : SM\AJ  
 Sample : AR1248ICC500  
 Misc :  
 ALS Vial : 11 Sample Multiplier: 1

Instrument :  
 ECD\_R  
 ClientSampleId :  
 AR1248ICC500

Integration File signal 1: autoint1.e  
 Integration File signal 2: autoint2.e  
 Quant Time: Aug 22 07:36:21 2019  
 Quant Method : Z:\pestpcbsrv\HPCHEM1\ECD\_R\Method\PR082119.M  
 Quant Title : GC EXTRACTABLES  
 QLast Update : Thu Aug 22 07:36:05 2019  
 Response via : Initial Calibration  
 Integrator: ChemStation

Volume Inj. : 2 µl  
 Signal #1 Phase : ZB-MR1 Signal #2 Phase: ZB-MR2  
 Signal #1 Info : 30Mx0.32mmx 0.50µ Signal #2 Info : 30M x 0.32mm x 0.25µm

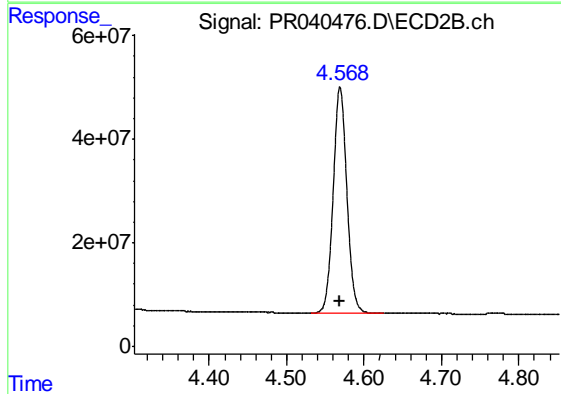




#1 Tetrachloro-m-xylene

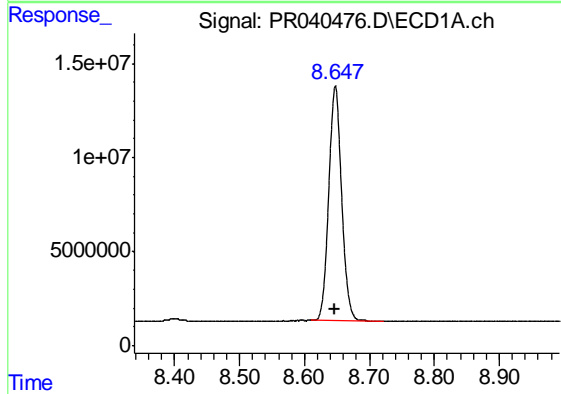
R.T.: 3.727 min  
 Delta R.T.: 0.000 min  
 Response: 118632021  
 Conc: 50.00 ng/ml

Instrument :  
 ECD\_R  
 ClientSampleId :  
 AR1248ICC500



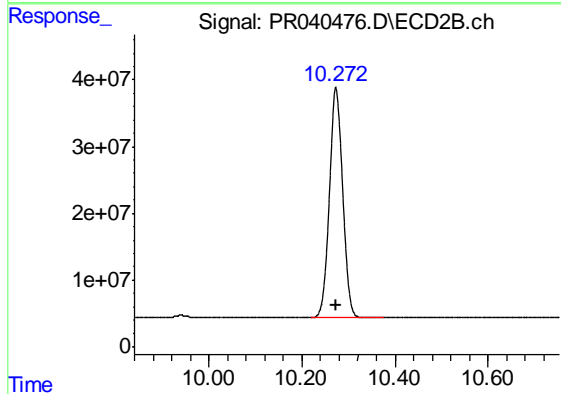
#1 Tetrachloro-m-xylene

R.T.: 4.569 min  
 Delta R.T.: 0.000 min  
 Response: 537516620  
 Conc: 50.00 ng/ml



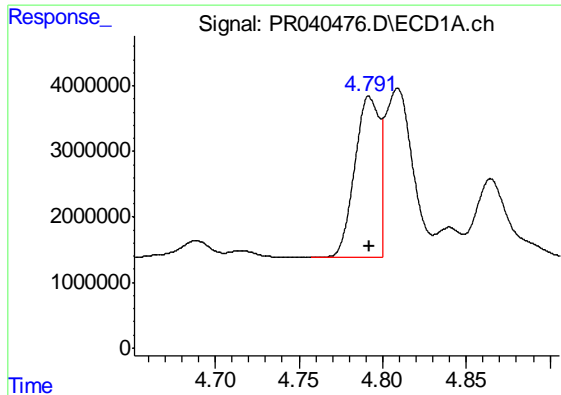
#2 Decachlorobiphenyl

R.T.: 8.648 min  
 Delta R.T.: 0.000 min  
 Response: 171426474  
 Conc: 50.00 ng/ml



#2 Decachlorobiphenyl

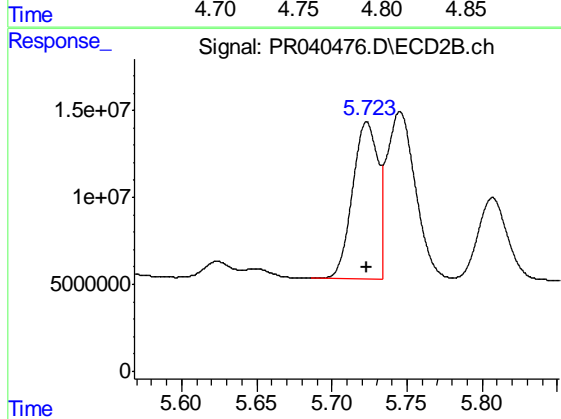
R.T.: 10.273 min  
 Delta R.T.: 0.000 min  
 Response: 679294970  
 Conc: 50.00 ng/ml



#21 AR-1248-1

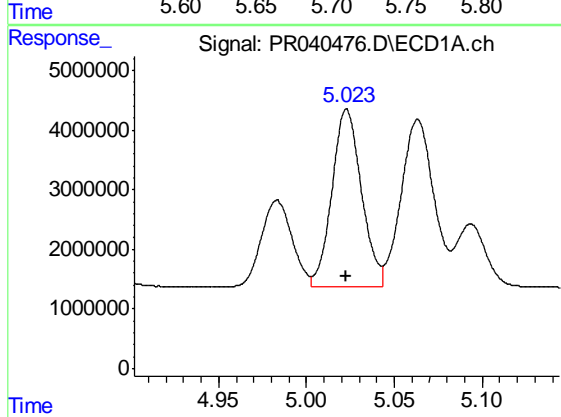
R.T.: 4.792 min  
 Delta R.T.: 0.000 min  
 Response: 24918819  
 Conc: 500.00 ng/ml

Instrument :  
 ECD\_R  
 ClientSampleId :  
 AR1248ICC500



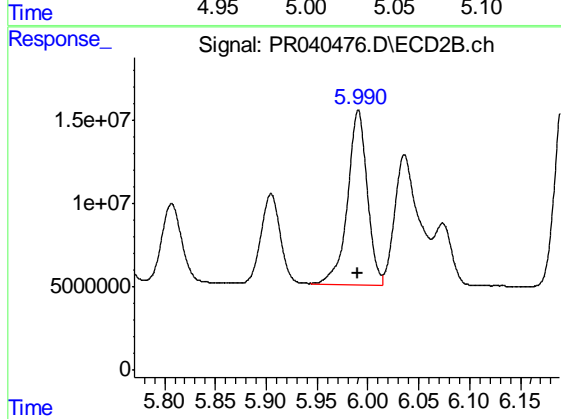
#21 AR-1248-1

R.T.: 5.723 min  
 Delta R.T.: 0.000 min  
 Response: 106079931  
 Conc: 500.00 ng/ml



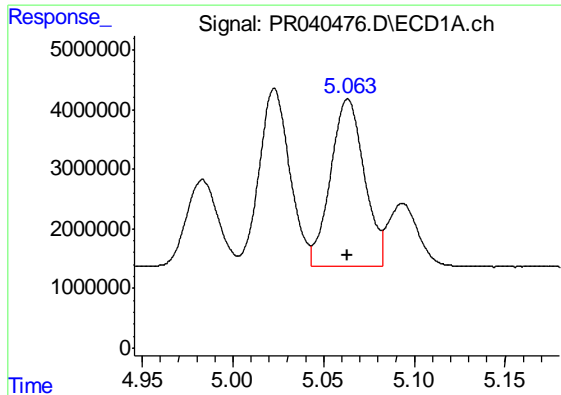
#22 AR-1248-2

R.T.: 5.023 min  
 Delta R.T.: 0.000 min  
 Response: 34966049  
 Conc: 500.00 ng/ml



#22 AR-1248-2

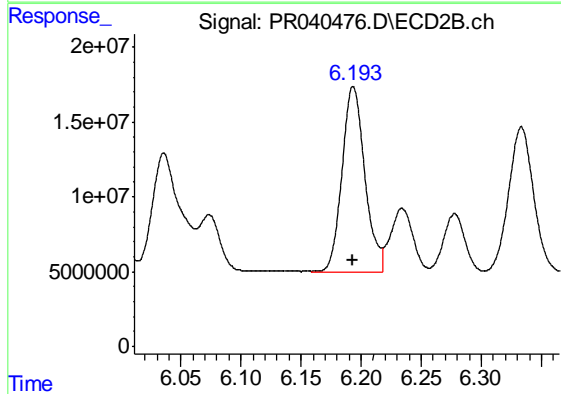
R.T.: 5.991 min  
 Delta R.T.: 0.000 min  
 Response: 140934871  
 Conc: 500.00 ng/ml



#23 AR-1248-3

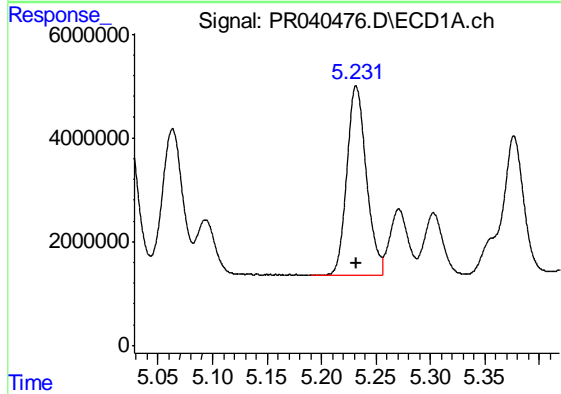
R.T.: 5.063 min  
 Delta R.T.: 0.000 min  
 Response: 36433609  
 Conc: 500.00 ng/ml

Instrument :  
 ECD\_R  
 ClientSampleId :  
 AR1248ICC500



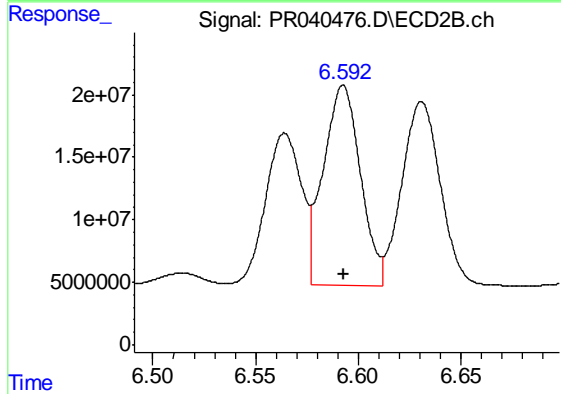
#23 AR-1248-3

R.T.: 6.193 min  
 Delta R.T.: 0.000 min  
 Response: 163473978  
 Conc: 500.00 ng/ml



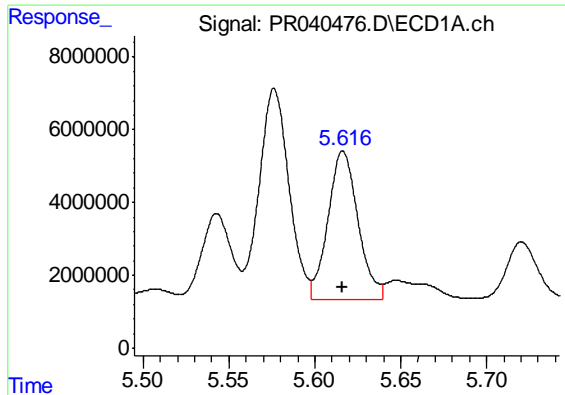
#24 AR-1248-4

R.T.: 5.232 min  
 Delta R.T.: 0.000 min  
 Response: 45456904  
 Conc: 500.00 ng/ml



#24 AR-1248-4

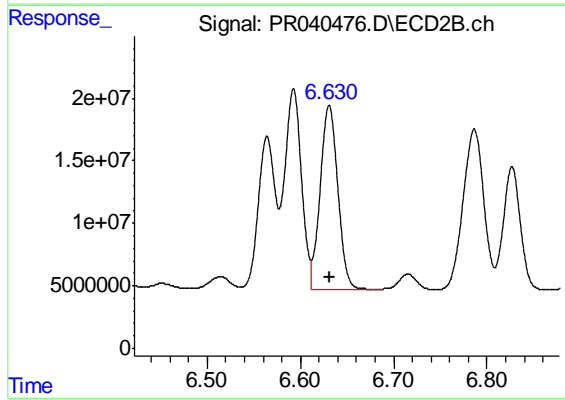
R.T.: 6.593 min  
 Delta R.T.: 0.000 min  
 Response: 200830155  
 Conc: 500.00 ng/ml



#25 AR-1248-5

R.T.: 5.616 min  
Delta R.T.: 0.000 min  
Response: 49245599  
Conc: 500.00 ng/ml

Instrument :  
ECD\_R  
ClientSampleId :  
AR1248ICC500



#25 AR-1248-5

R.T.: 6.631 min  
Delta R.T.: 0.000 min  
Response: 192607045  
Conc: 500.00 ng/ml