

Data Path : Z:\pestpcbsrv\HPCHEM1\ECD\_R\Data\PR082119\  
 Data File : PR040478.D  
 Signal(s) : Signal #1: ECD1A.ch Signal #2: ECD2B.ch  
 Acq On : 21 Aug 2019 16:09  
 Operator : SM\AJ  
 Sample : AR1262ICC500  
 Misc :  
 ALS Vial : 13 Sample Multiplier: 1

Instrument :  
 ECD\_R  
 ClientSampleId :  
 AR1262ICC500

Integration File signal 1: autoint1.e  
 Integration File signal 2: autoint2.e  
 Quant Time: Aug 22 07:53:30 2019  
 Quant Method : Z:\pestpcbsrv\HPCHEM1\ECD\_R\Method\PR082119.M  
 Quant Title : GC EXTRACTABLES  
 QLast Update : Thu Aug 22 07:53:06 2019  
 Response via : Initial Calibration  
 Integrator: ChemStation

Volume Inj. : 2 µl  
 Signal #1 Phase : ZB-MR1 Signal #2 Phase: ZB-MR2  
 Signal #1 Info : 30Mx0.32mmx 0.50µ Signal #2 Info : 30M x 0.32mm x 0.25µm

Compound	RT#1	RT#2	Resp#1	Resp#2	ng/ml	ng/ml
-----						
System Monitoring Compounds						
1) SA Tetrachlo...	3.725	4.567	158.4E6	696.9E6	50.000	50.000
2) SA Decachlor...	8.648	10.274	175.6E6	713.1E6	50.000	50.000
Target Compounds						
36) L8 AR-1262-1	6.842	7.911	50794998	421.7E6	500.000	500.000
37) L8 AR-1262-2	7.284	8.462	255.3E6	850.4E6	500.000	500.000
38) L8 AR-1262-3	7.562	8.774	94401723	560.3E6	500.000	500.000
39) L8 AR-1262-4	7.626	8.865	183.1E6	431.9E6	500.000	500.000
40) L8 AR-1262-5	8.115	9.527	82671864	315.2E6	500.000	500.000
-----						

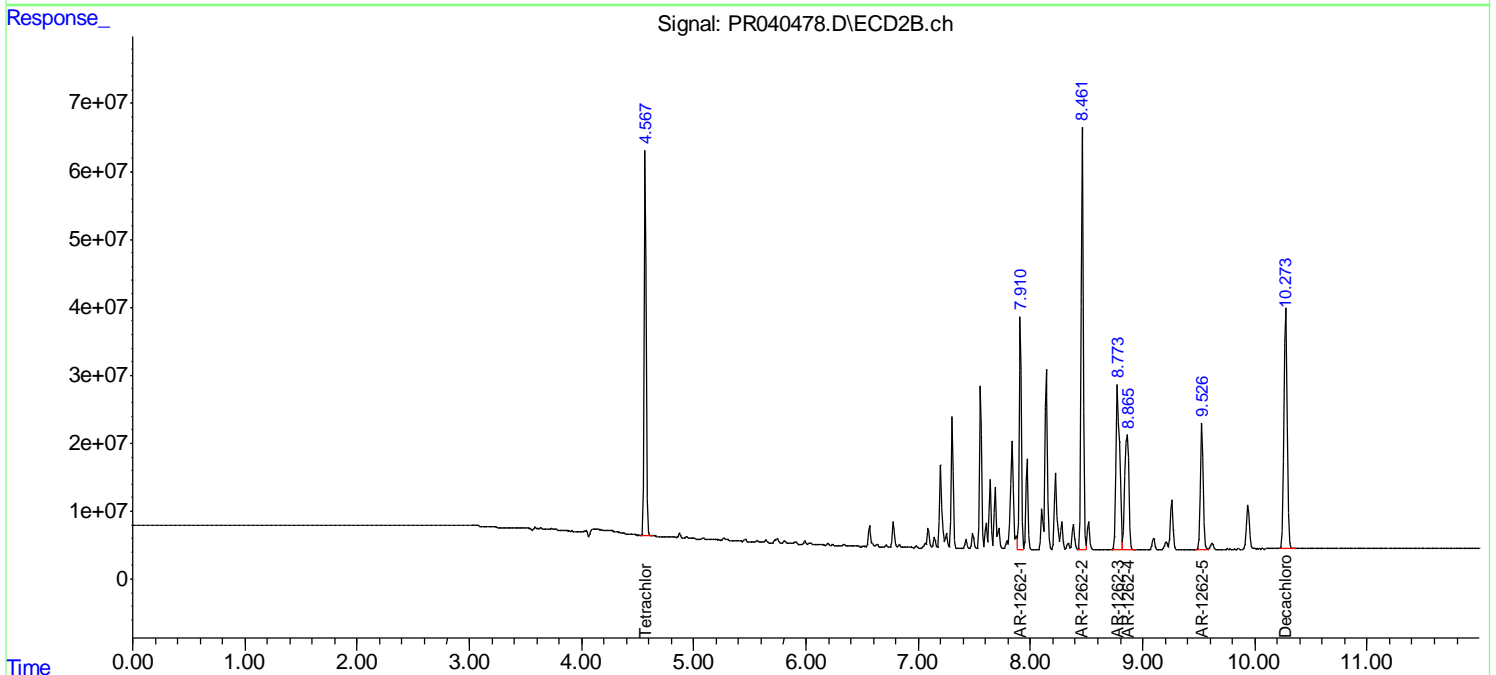
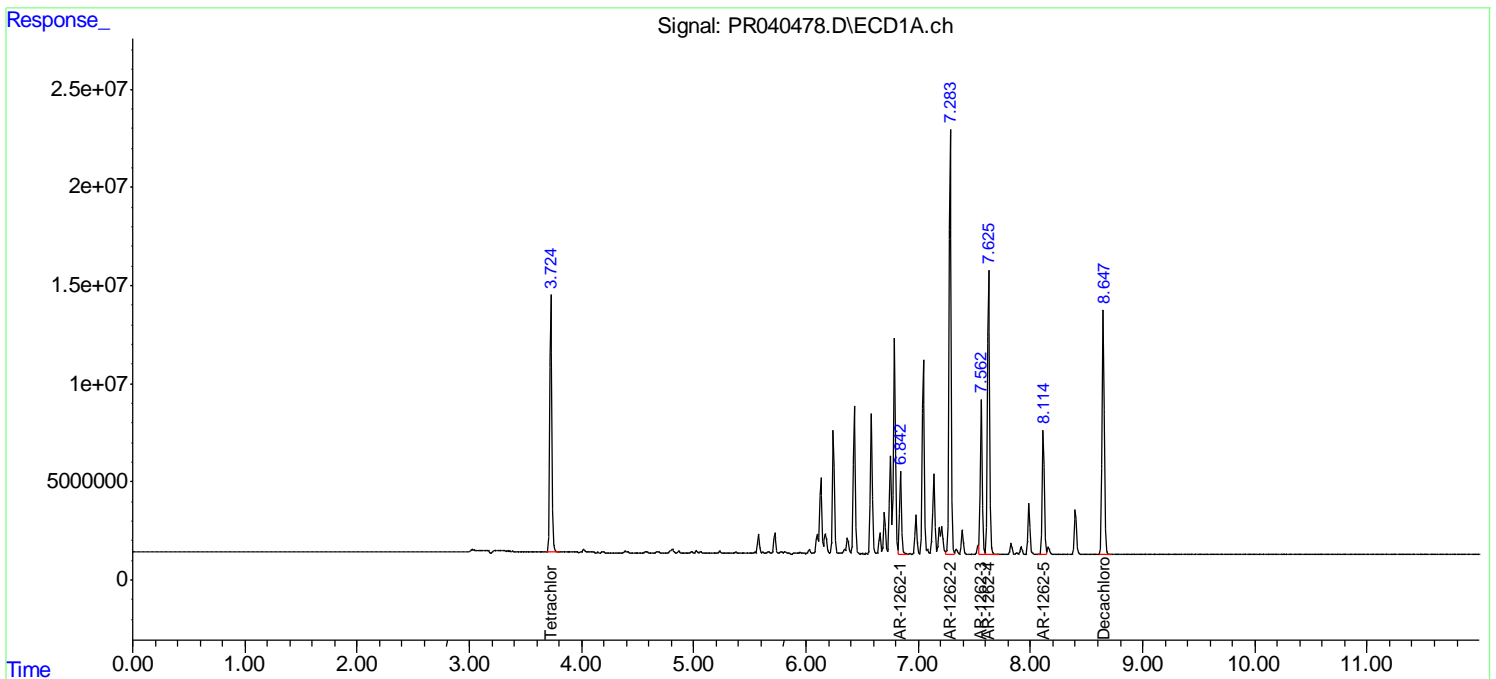
(f)=RT Delta > 1/2 Window (#)=Amounts differ by > 25% (m)=manual int.

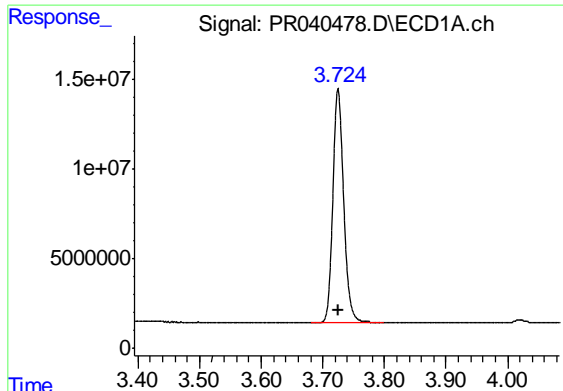
Data Path : Z:\pestpcbsrv\HPCHEM1\ECD\_R\Data\PR082119\  
 Data File : PR040478.D  
 Signal(s) : Signal #1: ECD1A.ch Signal #2: ECD2B.ch  
 Acq On : 21 Aug 2019 16:09  
 Operator : SM\AJ  
 Sample : AR1262ICC500  
 Misc :  
 ALS Vial : 13 Sample Multiplier: 1

**Instrument :**  
 ECD\_R  
**Client Sampled :**  
 AR1262ICC500

Integration File signal 1: autoint1.e  
 Integration File signal 2: autoint2.e  
 Quant Time: Aug 22 07:53:30 2019  
 Quant Method : Z:\pestpcbsrv\HPCHEM1\ECD\_R\Method\PR082119.M  
 Quant Title : GC EXTRACTABLES  
 QLast Update : Thu Aug 22 07:53:06 2019  
 Response via : Initial Calibration  
 Integrator: ChemStation

Volume Inj. : 2 µl  
 Signal #1 Phase : ZB-MR1 Signal #2 Phase: ZB-MR2  
 Signal #1 Info : 30Mx0.32mmx 0.50µ Signal #2 Info : 30M x 0.32mm x 0.25µm

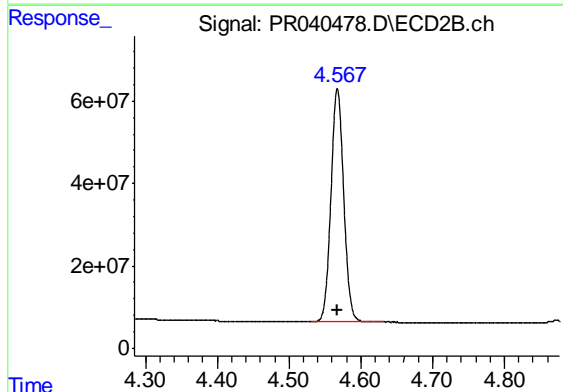




#1 Tetrachloro-m-xylene

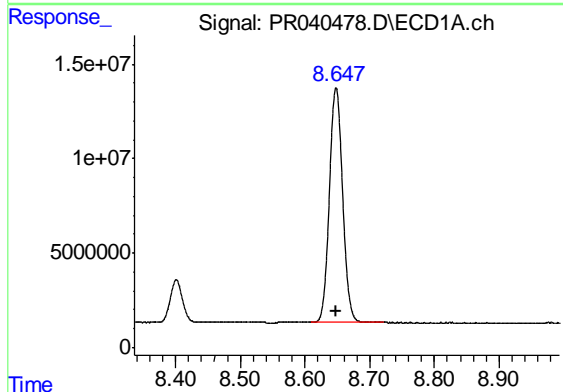
R.T.: 3.725 min  
Delta R.T.: 0.000 min  
Response: 158402821  
Conc: 50.00 ng/ml

Instrument :  
ECD\_R  
ClientSampleId :  
AR1262ICC500



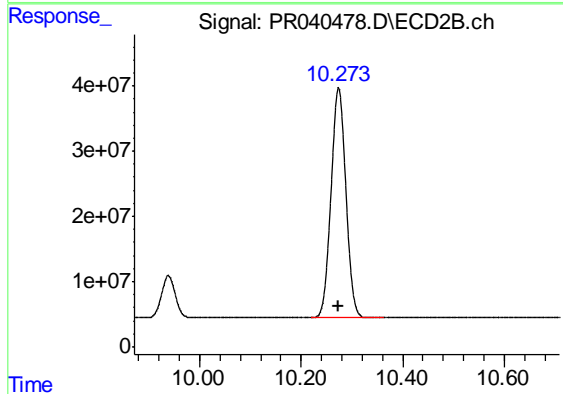
#1 Tetrachloro-m-xylene

R.T.: 4.567 min  
Delta R.T.: 0.000 min  
Response: 696946234  
Conc: 50.00 ng/ml



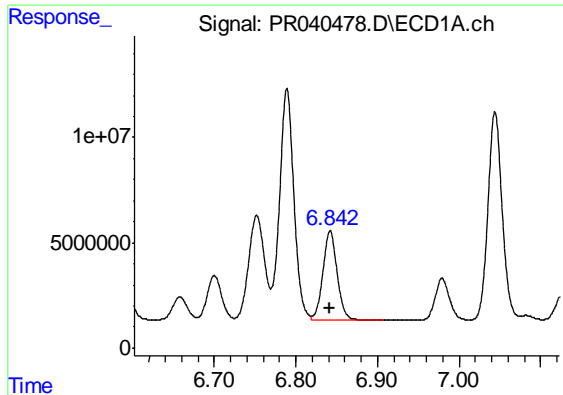
#2 Decachlorobiphenyl

R.T.: 8.648 min  
Delta R.T.: 0.000 min  
Response: 175600289  
Conc: 50.00 ng/ml



#2 Decachlorobiphenyl

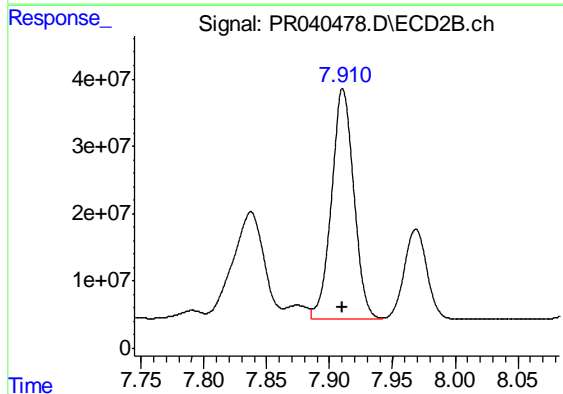
R.T.: 10.274 min  
Delta R.T.: 0.000 min  
Response: 713139904  
Conc: 50.00 ng/ml



#36 AR-1262-1

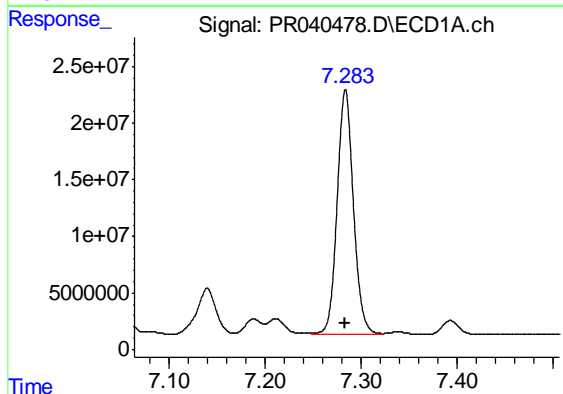
R.T.: 6.842 min  
Delta R.T.: 0.000 min  
Response: 50794998  
Conc: 500.00 ng/ml

Instrument :  
ECD\_R  
ClientSampleId :  
AR1262ICC500



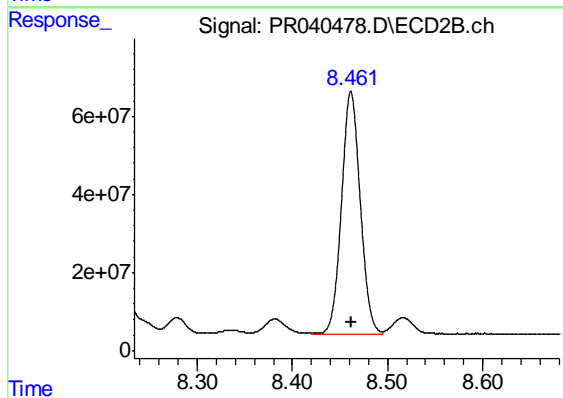
#36 AR-1262-1

R.T.: 7.911 min  
Delta R.T.: 0.000 min  
Response: 421650664  
Conc: 500.00 ng/ml



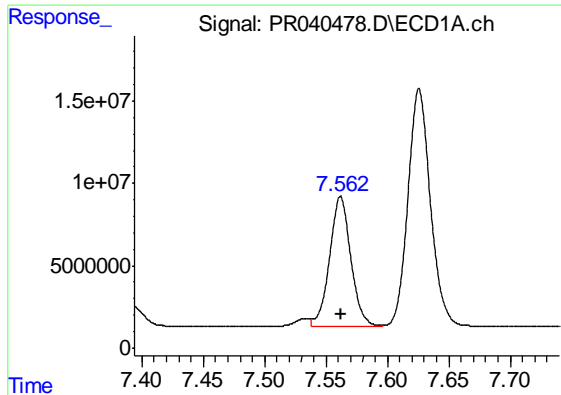
#37 AR-1262-2

R.T.: 7.284 min  
Delta R.T.: 0.000 min  
Response: 255293482  
Conc: 500.00 ng/ml



#37 AR-1262-2

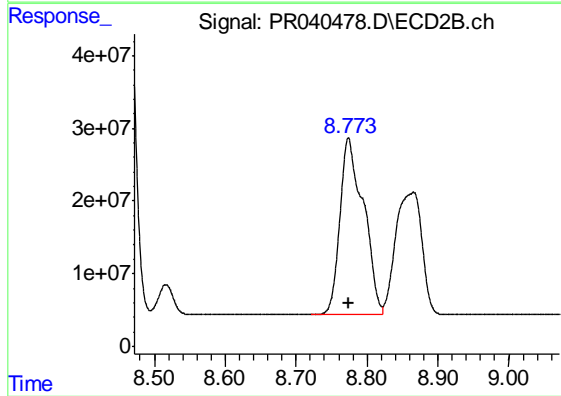
R.T.: 8.462 min  
Delta R.T.: 0.000 min  
Response: 850384126  
Conc: 500.00 ng/ml



#38 AR-1262-3

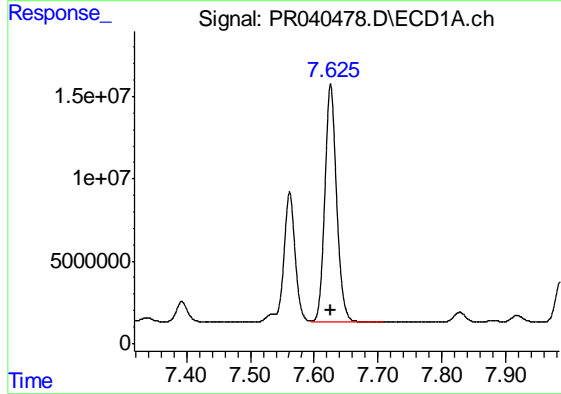
R.T.: 7.562 min  
 Delta R.T.: 0.000 min  
 Response: 94401723  
 Conc: 500.00 ng/ml

Instrument :  
 ECD\_R  
 ClientSampleId :  
 AR1262ICC500



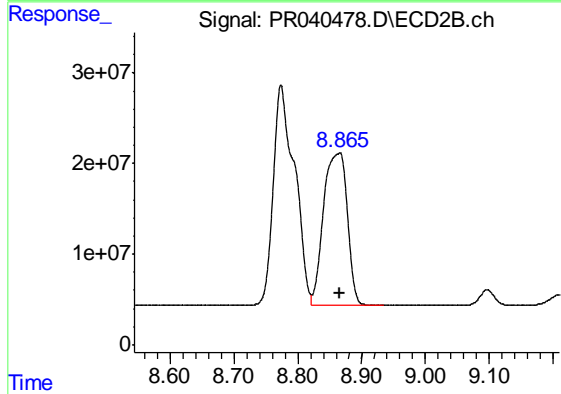
#38 AR-1262-3

R.T.: 8.774 min  
 Delta R.T.: 0.000 min  
 Response: 560271934  
 Conc: 500.00 ng/ml



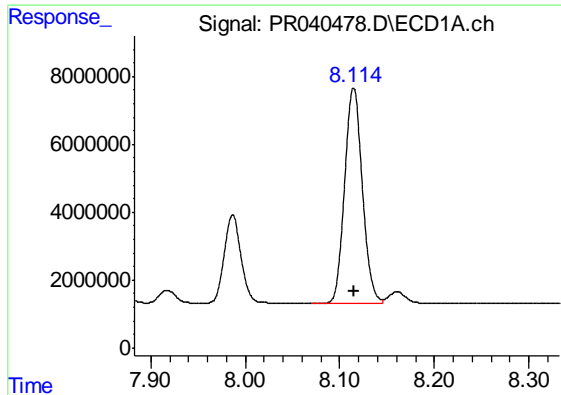
#39 AR-1262-4

R.T.: 7.626 min  
 Delta R.T.: 0.000 min  
 Response: 183091172  
 Conc: 500.00 ng/ml



#39 AR-1262-4

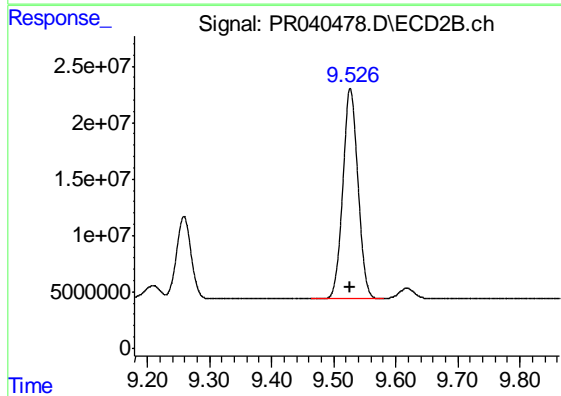
R.T.: 8.865 min  
 Delta R.T.: 0.000 min  
 Response: 431937404  
 Conc: 500.00 ng/ml



#40 AR-1262-5

R.T.: 8.115 min  
Delta R.T.: 0.000 min  
Response: 82671864  
Conc: 500.00 ng/ml

Instrument :  
ECD\_R  
ClientSampleId :  
AR1262ICC500



#40 AR-1262-5

R.T.: 9.527 min  
Delta R.T.: 0.000 min  
Response: 315233784  
Conc: 500.00 ng/ml