

Data Path : Z:\pestpcbsrv\HPCHEM1\ECD_R\Data\PR082119\
 Data File : PR040488.D
 Signal(s) : Signal #1: ECD1A.ch Signal #2: ECD2B.ch
 Acq On : 21 Aug 2019 19:35
 Operator : SM\AJ
 Sample : K4421-03
 Misc :
 ALS Vial : 9 Sample Multiplier: 1

Instrument :
 ECD_R
ClientSampleId :
 SUNSET-PARK-SB-6-COMP

Manual Integrations
APPROVED

Ankita
 8/22/2019 2:45:04 PM

Integration File signal 1: autoint1.e
 Integration File signal 2: autoint2.e
 Quant Time: Aug 22 08:08:18 2019
 Quant Method : Z:\pestpcbsrv\HPCHEM1\ECD_R\Method\PR082119.M
 Quant Title : GC EXTRACTABLES
 QLast Update : Thu Aug 22 08:00:11 2019
 Response via : Initial Calibration
 Integrator: ChemStation

Volume Inj. : 2 µl
 Signal #1 Phase : ZB-MR1 Signal #2 Phase: ZB-MR2
 Signal #1 Info : 30Mx0.32mmx 0.50µ Signal #2 Info : 30M x 0.32mm x 0.25µm

Compound	RT#1	RT#2	Resp#1	Resp#2	ng/ml	ng/ml
----------	------	------	--------	--------	-------	-------

 System Monitoring Compounds

1) SA Tetrachlo...	3.738	4.571	33769827	133.4E6	11.519m	10.038
2) SA Decachlor...	8.657	10.273	32396503	154.6E6	8.754	10.214m

Target Compounds

(f)=RT Delta > 1/2 Window (#)=Amounts differ by > 25% (m)=manual int.

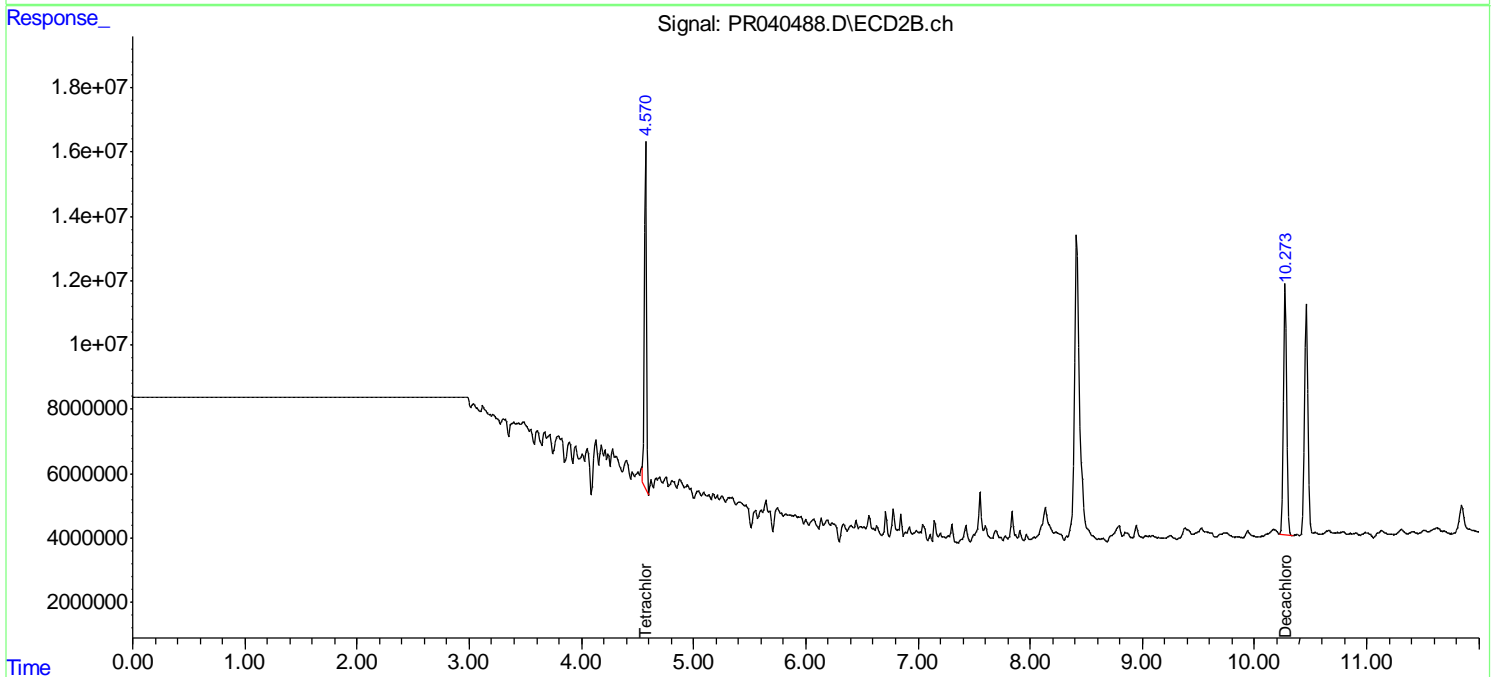
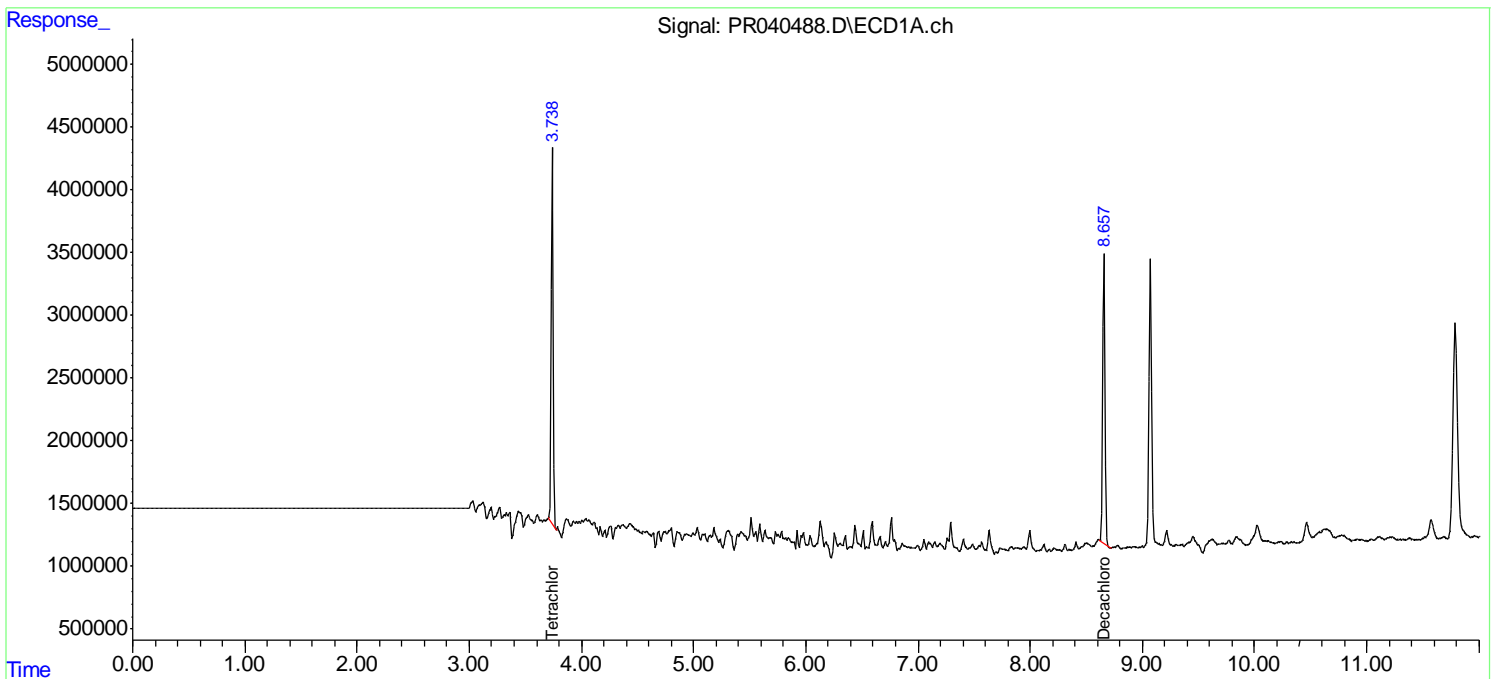
Data Path : Z:\pestpcbsrv\HPCHEM1\ECD_R\Data\PR082119\
 Data File : PR040488.D
 Signal(s) : Signal #1: ECD1A.ch Signal #2: ECD2B.ch
 Acq On : 21 Aug 2019 19:35
 Operator : SM\AJ
 Sample : K4421-03
 Misc :
 ALS Vial : 9 Sample Multiplier: 1

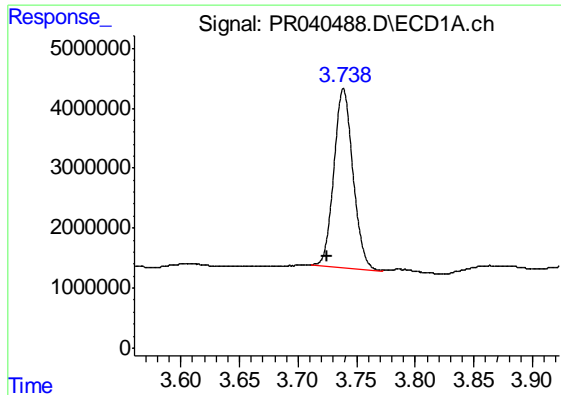
Instrument :
 ECD_R
Client Sampled :
 SUNSET-PARK-SB-6-COMP

Manual Integrations
APPROVED
 Ankita
 8/22/2019 2:45:04 PM

Integration File signal 1: autoint1.e
 Integration File signal 2: autoint2.e
 Quant Time: Aug 22 08:08:18 2019
 Quant Method : Z:\pestpcbsrv\HPCHEM1\ECD_R\Method\PR082119.M
 Quant Title : GC EXTRACTABLES
 QLast Update : Thu Aug 22 08:00:11 2019
 Response via : Initial Calibration
 Integrator: ChemStation

Volume Inj. : 2 µl
 Signal #1 Phase : ZB-MR1 Signal #2 Phase: ZB-MR2
 Signal #1 Info : 30Mx0.32mmx 0.50µ Signal #2 Info : 30M x 0.32mm x 0.25µm

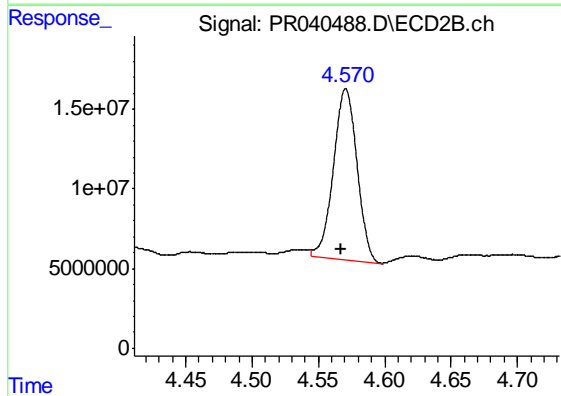




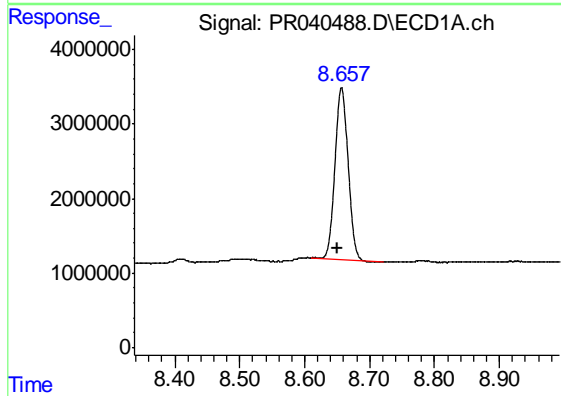
#1 Tetrachloro-m-xylene
 R.T.: 3.738 min
 Delta R.T.: 0.013 min
 Response: 33769827
 Conc: 11.52 ng/ml m

Instrument :
 ECD_R
ClientSampled :
 SUNSET-PARK-SB-6-COMP

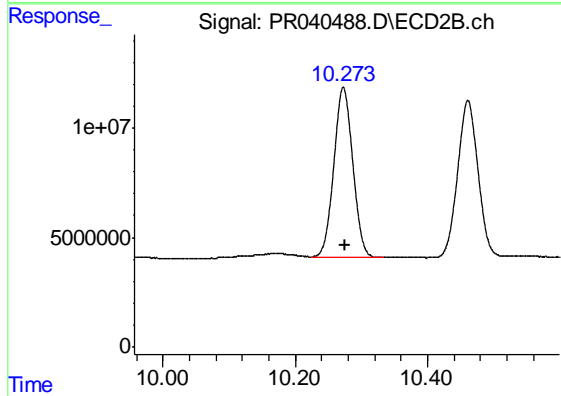
Manual Integrations
APPROVED
 Ankita
 8/22/2019 2:45:04 PM



#1 Tetrachloro-m-xylene
 R.T.: 4.571 min
 Delta R.T.: 0.003 min
 Response: 133433470
 Conc: 10.04 ng/ml



#2 Decachlorobiphenyl
 R.T.: 8.657 min
 Delta R.T.: 0.007 min
 Response: 32396503
 Conc: 8.75 ng/ml



#2 Decachlorobiphenyl
 R.T.: 10.273 min
 Delta R.T.: -0.003 min
 Response: 154573995
 Conc: 10.21 ng/ml m