

Data Path : Z:\pestpcbsrv\HPCHEM1\ECD_R\Data\PR082119\
 Data File : PR040491.D
 Signal(s) : Signal #1: ECD1A.ch Signal #2: ECD2B.ch
 Acq On : 21 Aug 2019 20:18
 Operator : SM\AJ
 Sample : K4421-09
 Misc :
 ALS Vial : 12 Sample Multiplier: 1

Instrument :
 ECD_R
ClientSampleId :
 SUNSET-PARK-SB-3-COMP

Manual Integrations
APPROVED
 Ankita
 8/22/2019 2:44:43 PM

Integration File signal 1: autoint1.e
 Integration File signal 2: autoint2.e
 Quant Time: Aug 22 08:10:49 2019
 Quant Method : Z:\pestpcbsrv\HPCHEM1\ECD_R\Method\PR082119.M
 Quant Title : GC EXTRACTABLES
 QLast Update : Thu Aug 22 08:00:11 2019
 Response via : Initial Calibration
 Integrator: ChemStation

Volume Inj. : 2 µl
 Signal #1 Phase : ZB-MR1 Signal #2 Phase: ZB-MR2
 Signal #1 Info : 30Mx0.32mmx 0.50µ Signal #2 Info : 30M x 0.32mm x 0.25µm

Compound	RT#1	RT#2	Resp#1	Resp#2	ng/ml	ng/ml

System Monitoring Compounds						
1) SA Tetrachlo...	3.731	4.572	38365071	159.5E6	13.087	11.996m
2) SA Decachlor...	8.648	10.275	36813311	176.6E6	9.947m	11.669
Target Compounds						
31) L7 AR-1260-1	6.245	7.303	6011903	25544820	34.543	44.687 #
32) L7 AR-1260-2	6.430	7.555	8269870	38120077	37.679	53.529 #
33) L7 AR-1260-3	6.581	7.911	5373838	28898464	26.737	51.965 #
34) L7 AR-1260-4	7.045	8.138	6098650	31193312	35.055	48.526 #
35) L7 AR-1260-5	7.284	8.462	15340493	66498018	34.966	47.208 #

(f)=RT Delta > 1/2 Window (#)=Amounts differ by > 25% (m)=manual int.

Data Path : Z:\pestpcbsrv\HPCHEM1\ECD_R\Data\PR082119\
 Data File : PR040491.D
 Signal(s) : Signal #1: ECD1A.ch Signal #2: ECD2B.ch
 Acq On : 21 Aug 2019 20:18
 Operator : SM\AJ
 Sample : K4421-09
 Misc :
 ALS Vial : 12 Sample Multiplier: 1

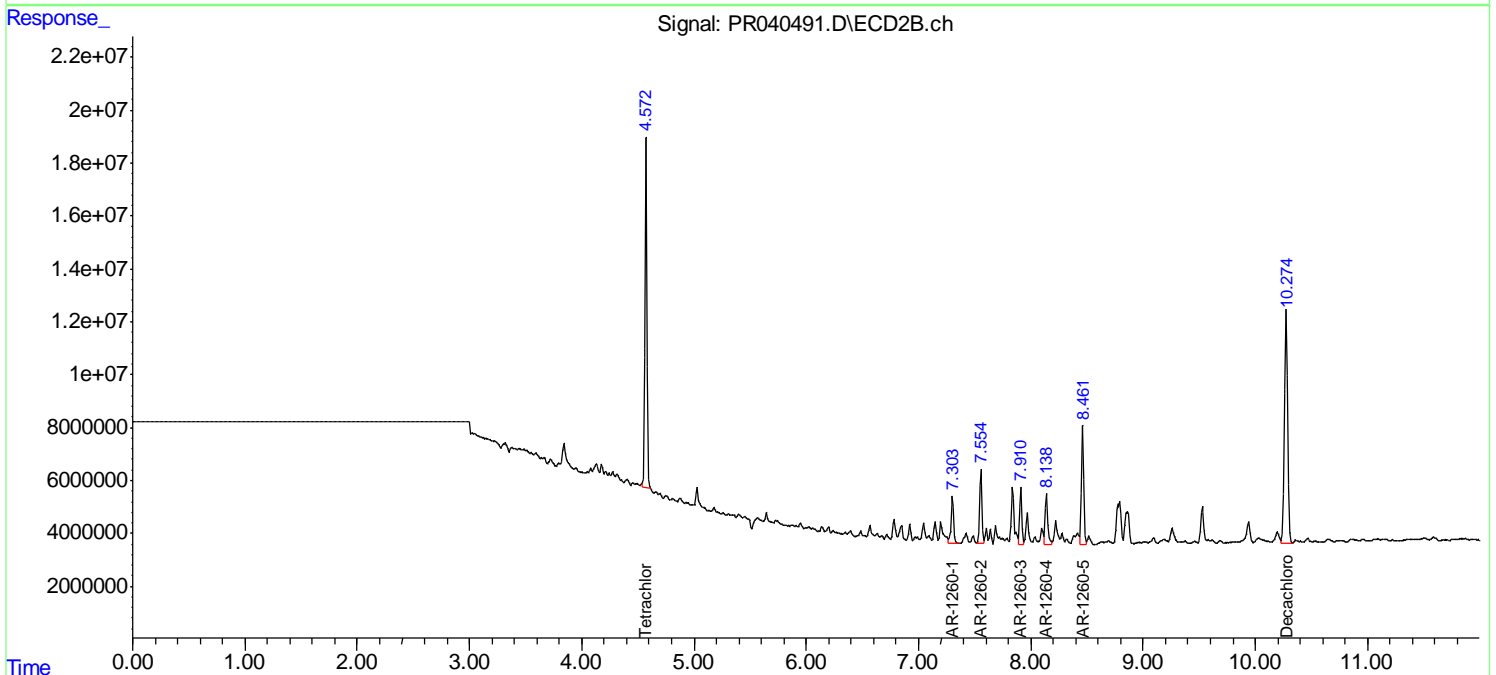
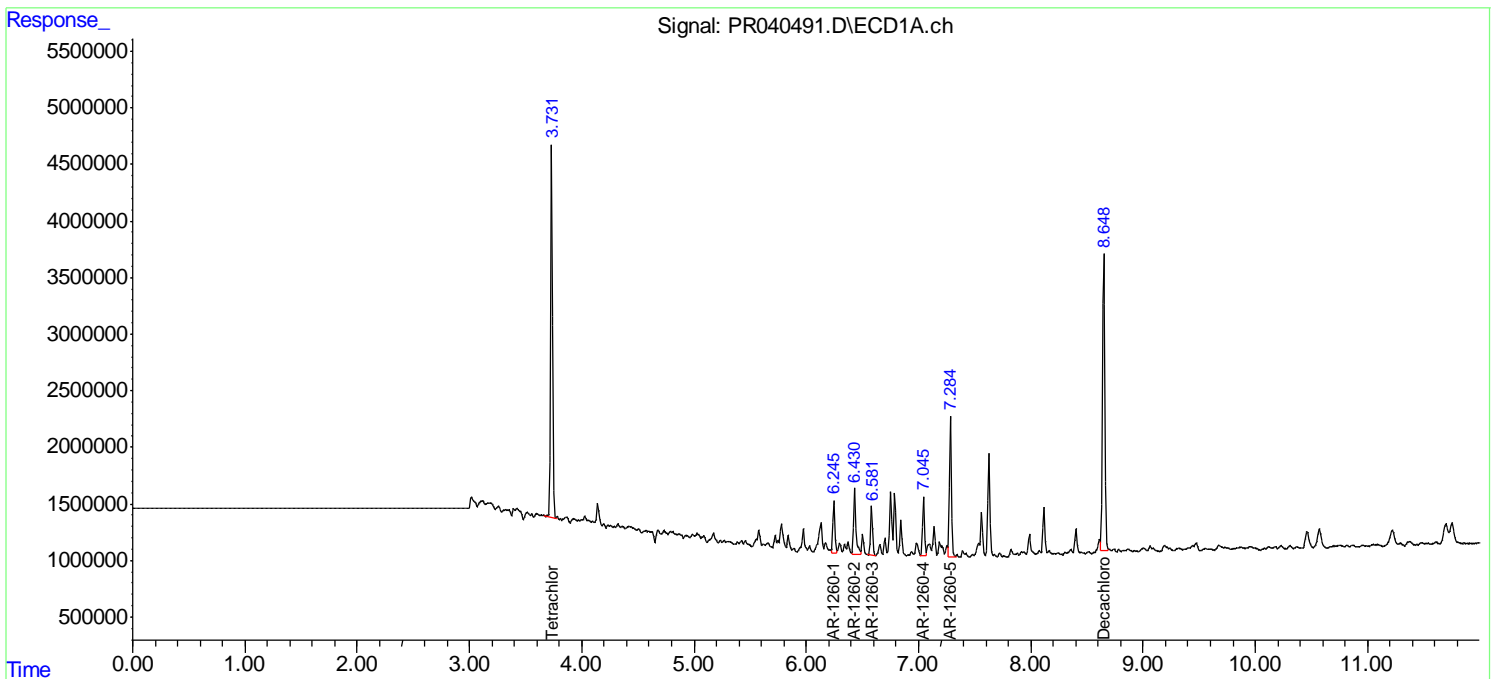
Instrument :
 ECD_R
 Client Sampled :
 SUNSET-PARK-SB-3-COMP

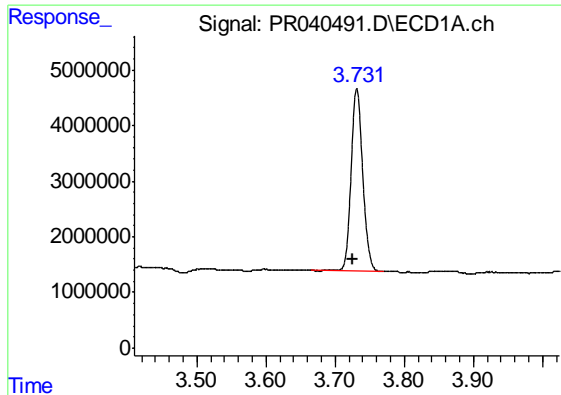
Manual Integrations
 APPROVED

Ankita
 8/22/2019 2:44:43 PM

Integration File signal 1: autoint1.e
 Integration File signal 2: autoint2.e
 Quant Time: Aug 22 08:10:49 2019
 Quant Method : Z:\pestpcbsrv\HPCHEM1\ECD_R\Method\PR082119.M
 Quant Title : GC EXTRACTABLES
 QLast Update : Thu Aug 22 08:00:11 2019
 Response via : Initial Calibration
 Integrator: ChemStation

Volume Inj. : 2 µl
 Signal #1 Phase : ZB-MR1 Signal #2 Phase: ZB-MR2
 Signal #1 Info : 30Mx0.32mmx 0.50µ Signal #2 Info : 30M x 0.32mm x 0.25µm





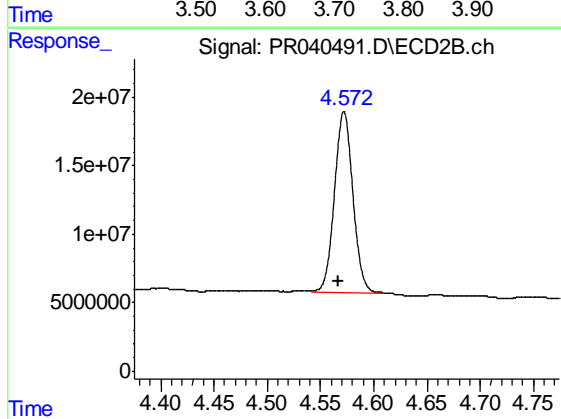
#1 Tetrachloro-m-xylene

R.T.: 3.731 min
 Delta R.T.: 0.006 min
 Response: 38365071
 Conc: 13.09 ng/ml

Instrument :
 ECD_R
 ClientSampleId :
 SUNSET-PARK-SB-3-COMP

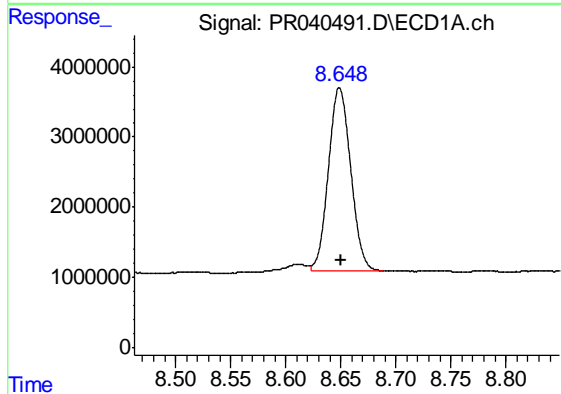
Manual Integrations
 APPROVED

Ankita
 8/22/2019 2:44:43 PM



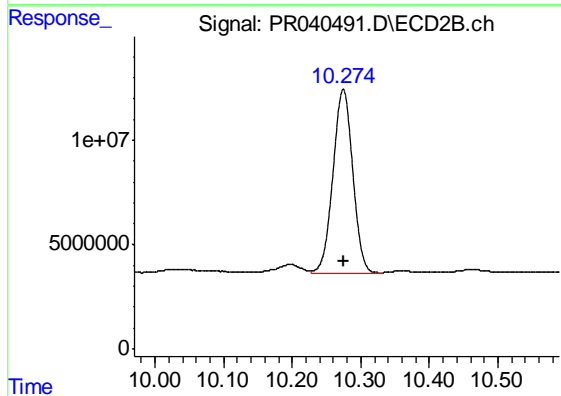
#1 Tetrachloro-m-xylene

R.T.: 4.572 min
 Delta R.T.: 0.004 min
 Response: 159455538
 Conc: 12.00 ng/ml m



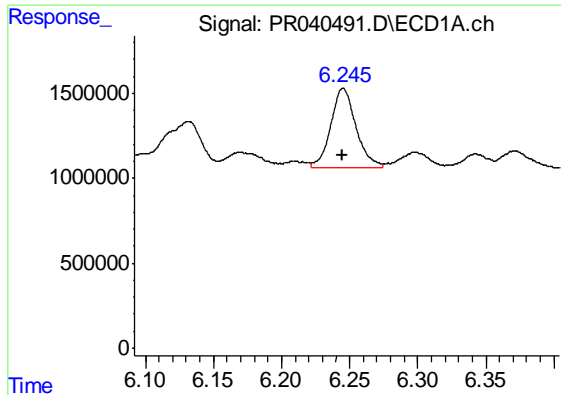
#2 Decachlorobiphenyl

R.T.: 8.648 min
 Delta R.T.: -0.002 min
 Response: 36813311
 Conc: 9.95 ng/ml m



#2 Decachlorobiphenyl

R.T.: 10.275 min
 Delta R.T.: 0.000 min
 Response: 176602468
 Conc: 11.67 ng/ml



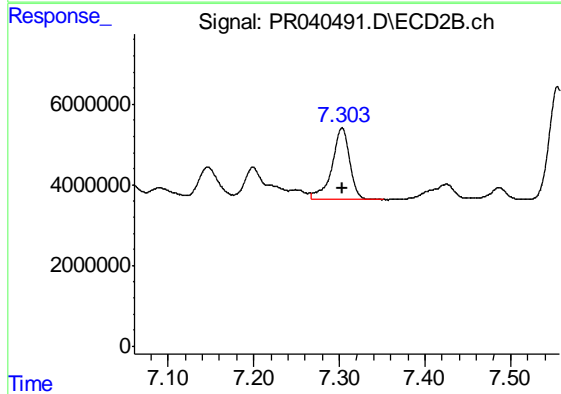
#31 AR-1260-1

R.T.: 6.245 min
 Delta R.T.: 0.000 min
 Response: 6011903
 Conc: 34.54 ng/ml

Instrument :
 ECD_R
 ClientSampleId :
 SUNSET-PARK-SB-3-COMP

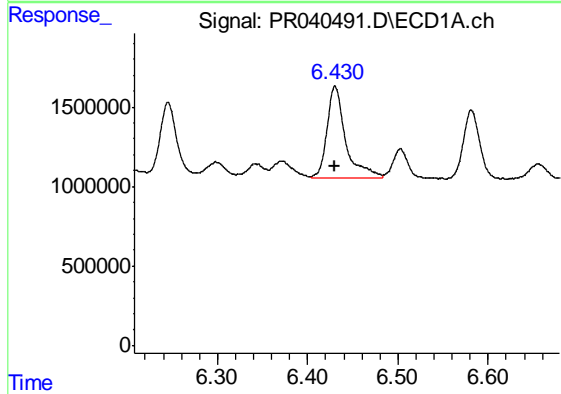
Manual Integrations
 APPROVED

Ankita
 8/22/2019 2:44:43 PM



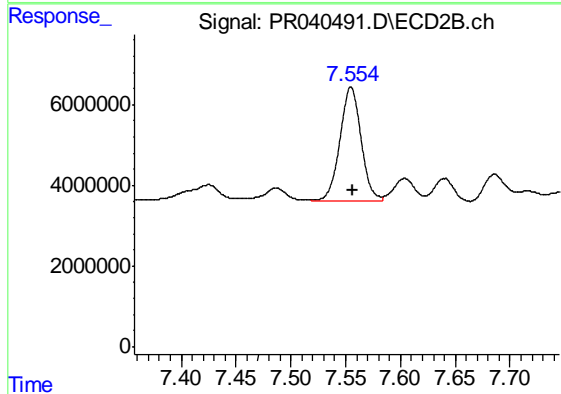
#31 AR-1260-1

R.T.: 7.303 min
 Delta R.T.: 0.000 min
 Response: 25544820
 Conc: 44.69 ng/ml



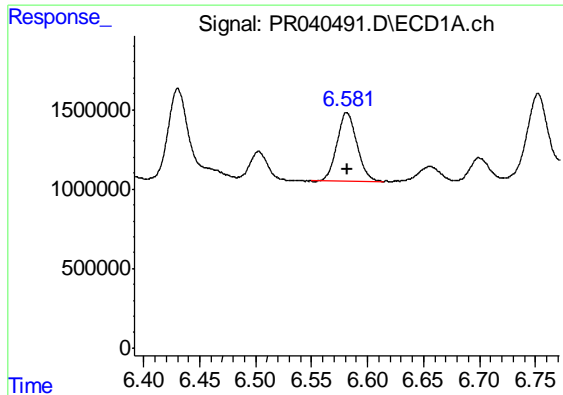
#32 AR-1260-2

R.T.: 6.430 min
 Delta R.T.: 0.000 min
 Response: 8269870
 Conc: 37.68 ng/ml



#32 AR-1260-2

R.T.: 7.555 min
 Delta R.T.: -0.002 min
 Response: 38120077
 Conc: 53.53 ng/ml



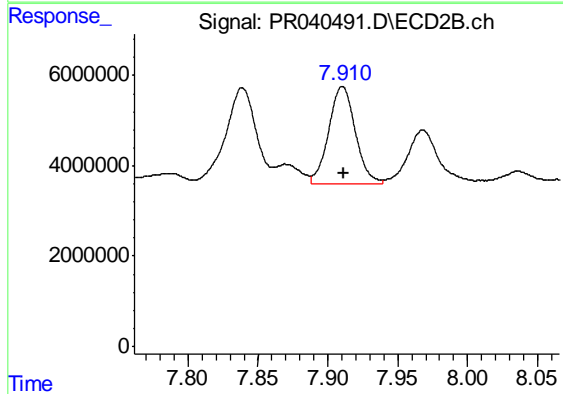
#33 AR-1260-3

R.T.: 6.581 min
 Delta R.T.: 0.000 min
 Response: 5373838
 Conc: 26.74 ng/ml

Instrument :
 ECD_R
 ClientSampleId :
 SUNSET-PARK-SB-3-COMP

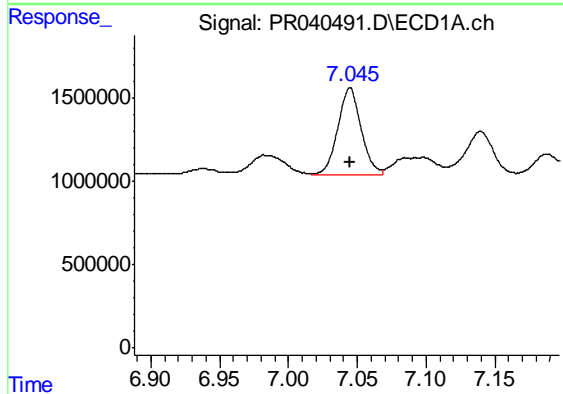
Manual Integrations
 APPROVED

Ankita
 8/22/2019 2:44:43 PM



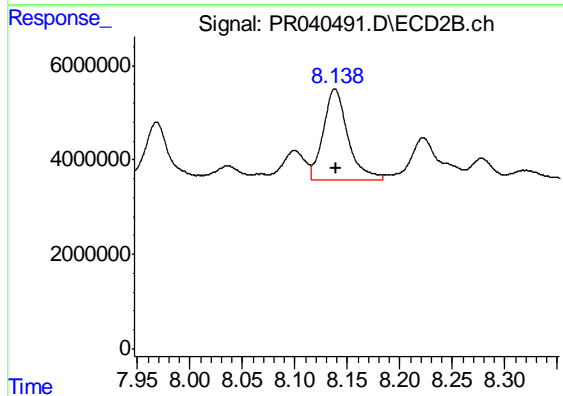
#33 AR-1260-3

R.T.: 7.911 min
 Delta R.T.: 0.000 min
 Response: 28898464
 Conc: 51.96 ng/ml



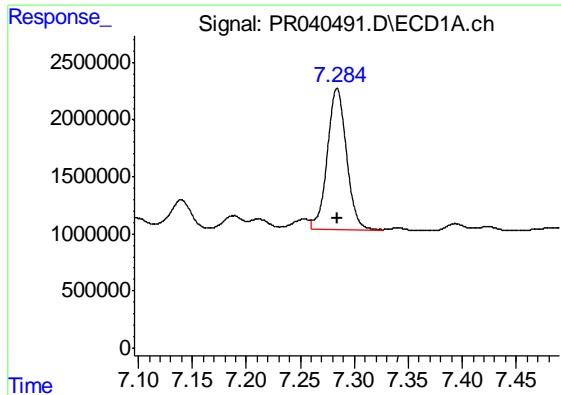
#34 AR-1260-4

R.T.: 7.045 min
 Delta R.T.: 0.000 min
 Response: 6098650
 Conc: 35.06 ng/ml



#34 AR-1260-4

R.T.: 8.138 min
 Delta R.T.: 0.000 min
 Response: 31193312
 Conc: 48.53 ng/ml



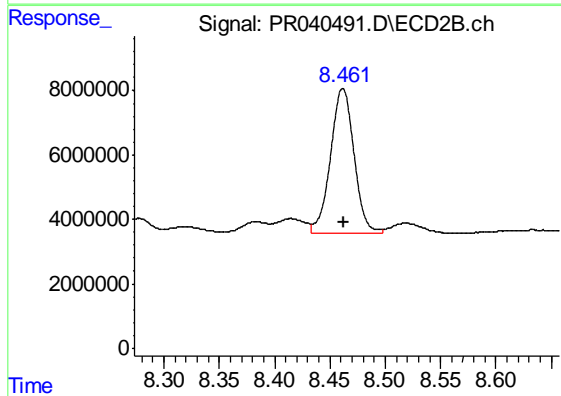
#35 AR-1260-5

R.T.: 7.284 min
Delta R.T.: 0.000 min
Response: 15340493
Conc: 34.97 ng/ml

Instrument :
ECD_R
ClientSampleId :
SUNSET-PARK-SB-3-COMP

Manual Integrations
APPROVED

Ankita
8/22/2019 2:44:43 PM



#35 AR-1260-5

R.T.: 8.462 min
Delta R.T.: 0.000 min
Response: 66498018
Conc: 47.21 ng/ml