

Data Path : Z:\pestpcbsrv\HPCHEM1\ECD_R\Data\PR082119\
 Data File : PR040493.D
 Signal(s) : Signal #1: ECD1A.ch Signal #2: ECD2B.ch
 Acq On : 21 Aug 2019 20:47
 Operator : SM\AJ
 Sample : K4421-13
 Misc :
 ALS Vial : 14 Sample Multiplier: 1

Instrument :
 ECD_R
ClientSampleId :
 SUNSET-PARK-SB-1-COMP

Manual Integrations
APPROVED
 Ankita
 8/22/2019 2:44:45 PM

Integration File signal 1: autoint1.e
 Integration File signal 2: autoint2.e
 Quant Time: Aug 22 08:12:31 2019
 Quant Method : Z:\pestpcbsrv\HPCHEM1\ECD_R\Method\PR082119.M
 Quant Title : GC EXTRACTABLES
 QLast Update : Thu Aug 22 08:00:11 2019
 Response via : Initial Calibration
 Integrator: ChemStation

Volume Inj. : 2 µl
 Signal #1 Phase : ZB-MR1 Signal #2 Phase: ZB-MR2
 Signal #1 Info : 30Mx0.32mmx 0.50µ Signal #2 Info : 30M x 0.32mm x 0.25µm

Compound	RT#1	RT#2	Resp#1	Resp#2	ng/ml	ng/ml

System Monitoring Compounds						
1) SA Tetrachlo...	3.731	4.571	37429598	133.9E6	12.768	10.076m
2) SA Decachlor...	8.648	10.272	40896424	198.5E6	11.050	13.115m
Target Compounds						
31) L7 AR-1260-1	6.246	7.303	12094701	39863288	69.494	69.736
32) L7 AR-1260-2	6.431	7.556	11544454	48529225	52.598	68.145 #
33) L7 AR-1260-3	6.581	7.910	8562809	25003217	42.604	44.960
34) L7 AR-1260-4	7.045	8.134	5391878	39824026	30.993	61.953 #
35) L7 AR-1260-5	7.284	8.461	15614247	59159578	35.590	41.998

(f)=RT Delta > 1/2 Window (#)=Amounts differ by > 25% (m)=manual int.

Data Path : Z:\pestpcbsrv\HPCHEM1\ECD_R\Data\PR082119\
 Data File : PR040493.D
 Signal(s) : Signal #1: ECD1A.ch Signal #2: ECD2B.ch
 Acq On : 21 Aug 2019 20:47
 Operator : SM\AJ
 Sample : K4421-13
 Misc :
 ALS Vial : 14 Sample Multiplier: 1

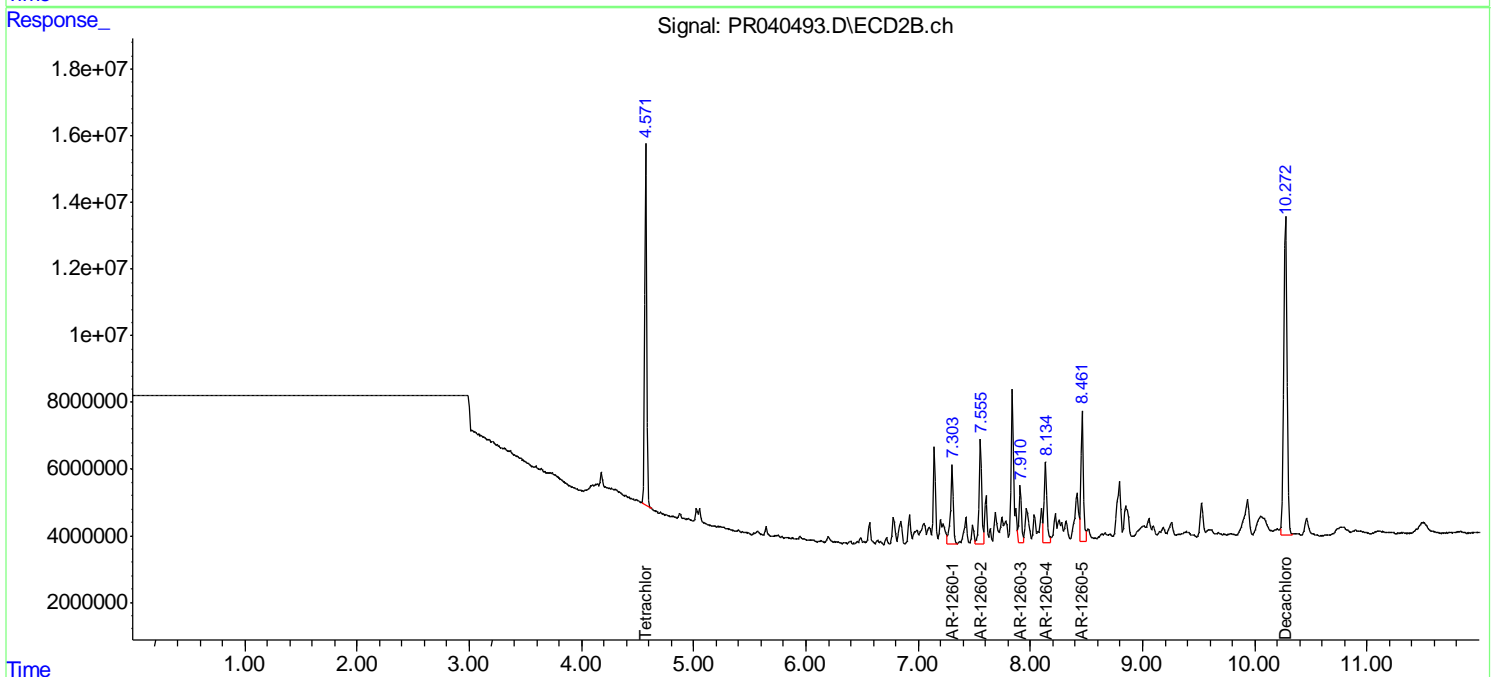
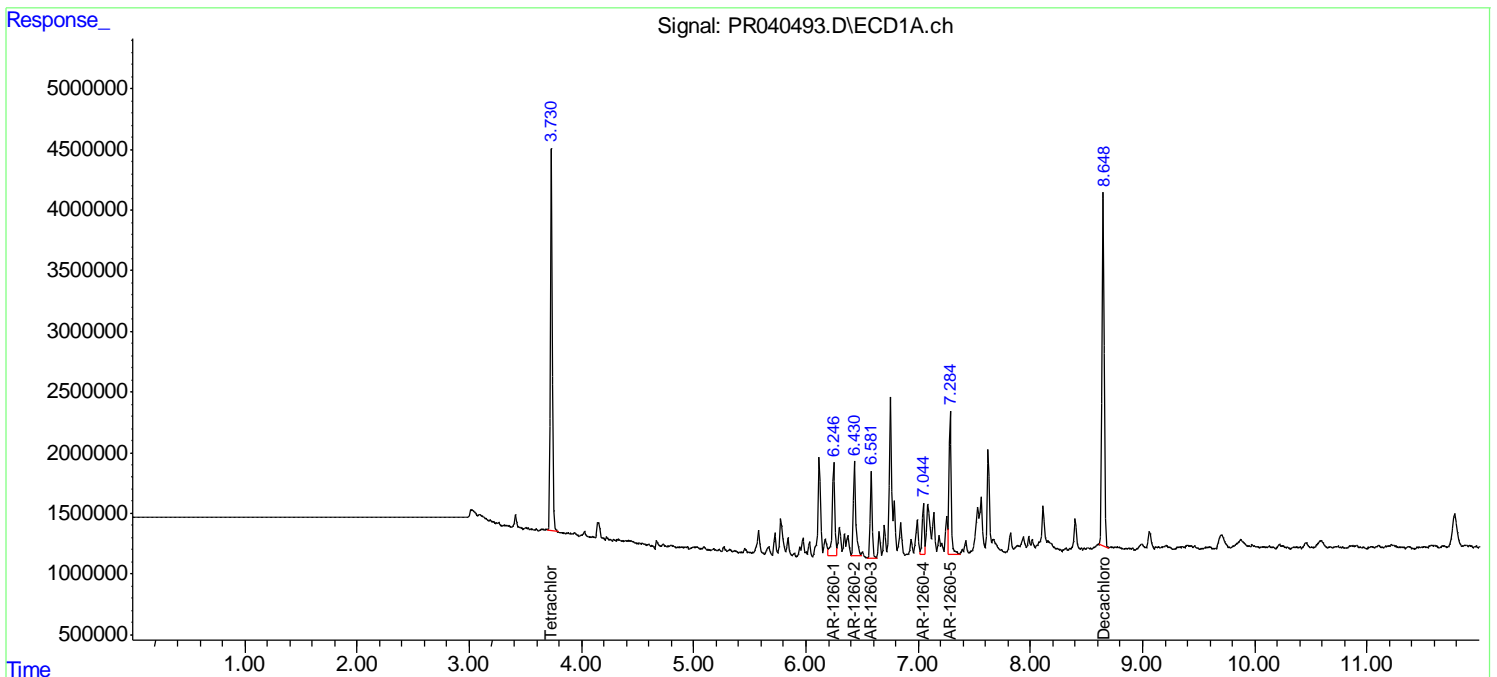
Instrument :
 ECD_R
Client Sampled :
 SUNSET-PARK-SB-1-COMP

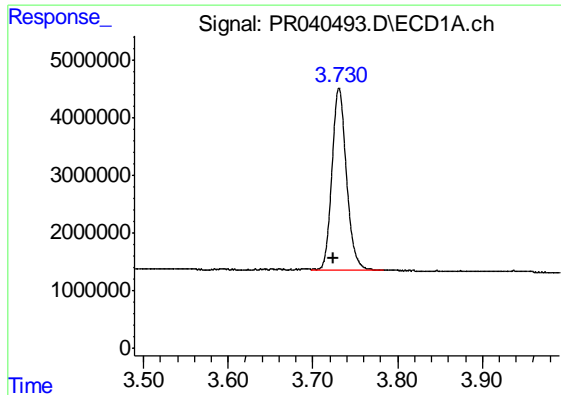
Manual Integrations
APPROVED

Ankita
 8/22/2019 2:44:45 PM

Integration File signal 1: autoint1.e
 Integration File signal 2: autoint2.e
 Quant Time: Aug 22 08:12:31 2019
 Quant Method : Z:\pestpcbsrv\HPCHEM1\ECD_R\Method\PR082119.M
 Quant Title : GC EXTRACTABLES
 QLast Update : Thu Aug 22 08:00:11 2019
 Response via : Initial Calibration
 Integrator: ChemStation

Volume Inj. : 2 µl
 Signal #1 Phase : ZB-MR1 Signal #2 Phase: ZB-MR2
 Signal #1 Info : 30Mx0.32mmx 0.50µ Signal #2 Info : 30M x 0.32mm x 0.25µm





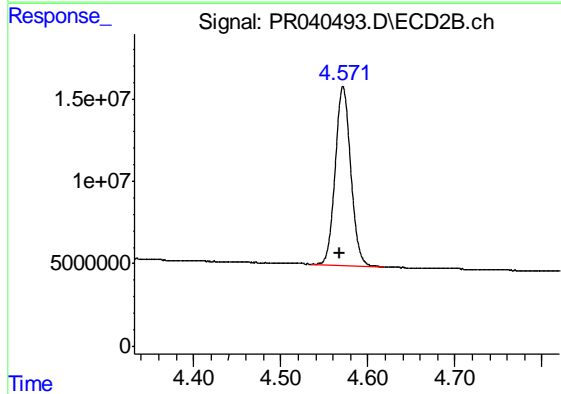
#1 Tetrachloro-m-xylene

R.T.: 3.731 min
 Delta R.T.: 0.006 min
 Response: 37429598
 Conc: 12.77 ng/ml

Instrument :
 ECD_R
 ClientSampleId :
 SUNSET-PARK-SB-1-COMP

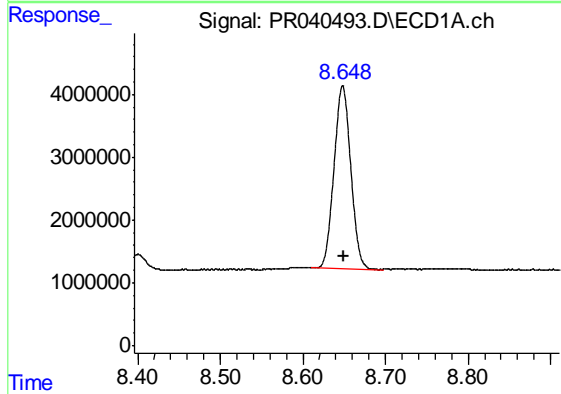
Manual Integrations
 APPROVED

Ankita
 8/22/2019 2:44:45 PM



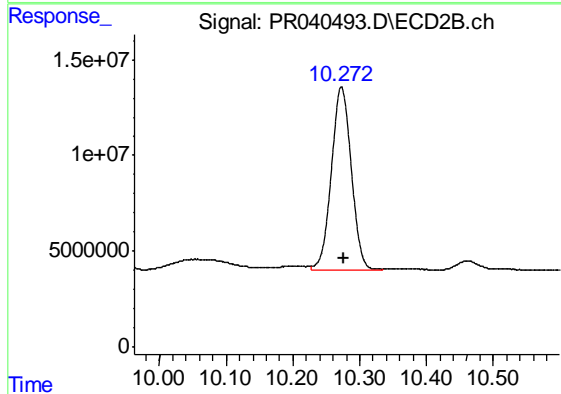
#1 Tetrachloro-m-xylene

R.T.: 4.571 min
 Delta R.T.: 0.003 min
 Response: 133928949
 Conc: 10.08 ng/ml m



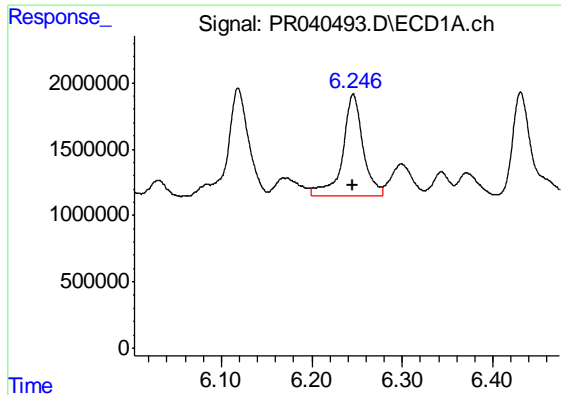
#2 Decachlorobiphenyl

R.T.: 8.648 min
 Delta R.T.: -0.002 min
 Response: 40896424
 Conc: 11.05 ng/ml



#2 Decachlorobiphenyl

R.T.: 10.272 min
 Delta R.T.: -0.003 min
 Response: 198475557
 Conc: 13.11 ng/ml m



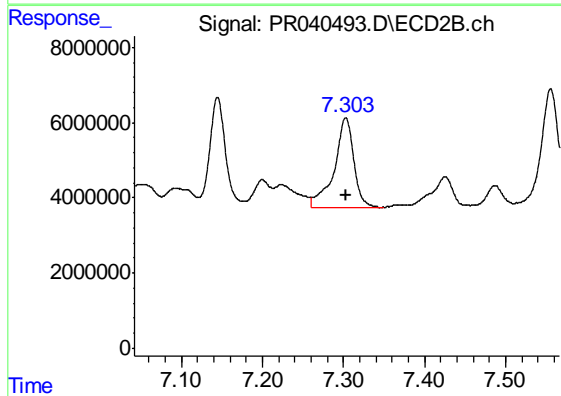
#31 AR-1260-1

R.T.: 6.246 min
 Delta R.T.: 0.000 min
 Response: 12094701
 Conc: 69.49 ng/ml

Instrument :
 ECD_R
 ClientSampleId :
 SUNSET-PARK-SB-1-COMP

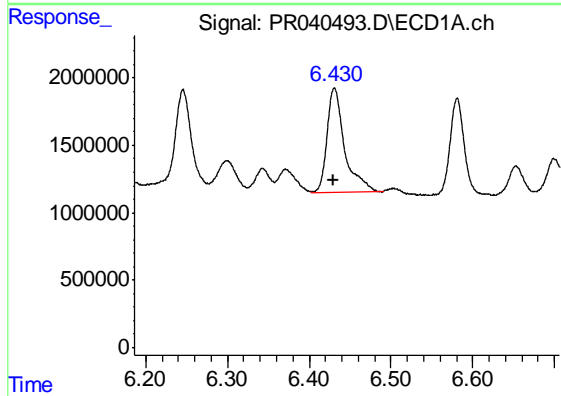
Manual Integrations
 APPROVED

Ankita
 8/22/2019 2:44:45 PM



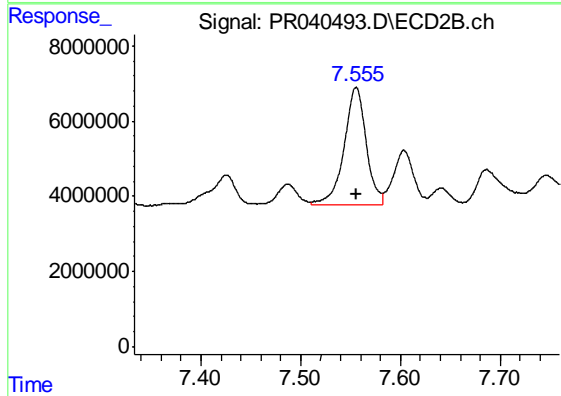
#31 AR-1260-1

R.T.: 7.303 min
 Delta R.T.: 0.000 min
 Response: 39863288
 Conc: 69.74 ng/ml



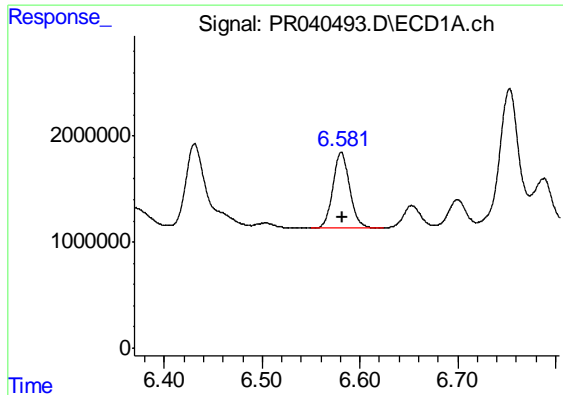
#32 AR-1260-2

R.T.: 6.431 min
 Delta R.T.: 0.001 min
 Response: 11544454
 Conc: 52.60 ng/ml



#32 AR-1260-2

R.T.: 7.556 min
 Delta R.T.: 0.000 min
 Response: 48529225
 Conc: 68.15 ng/ml

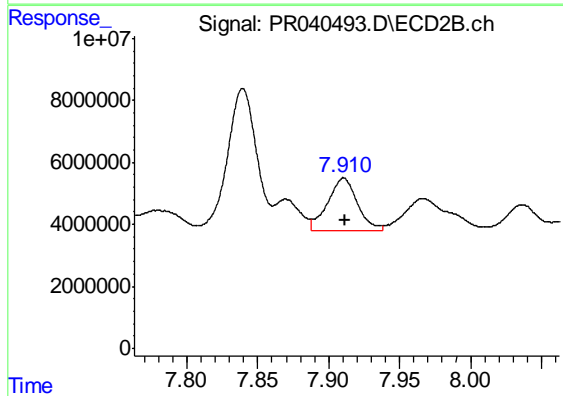


#33 AR-1260-3

R.T.: 6.581 min
 Delta R.T.: 0.000 min
 Response: 8562809
 Conc: 42.60 ng/ml

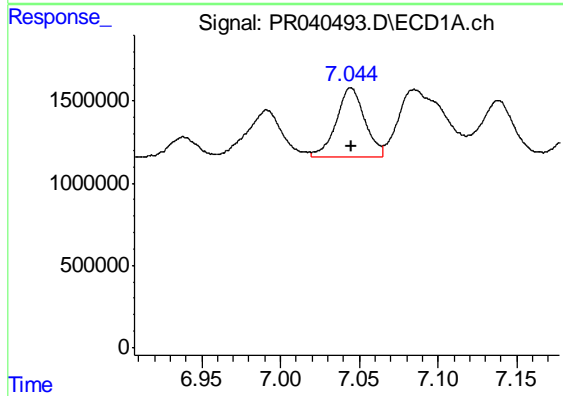
Instrument :
 ECD_R
ClientSampled :
 SUNSET-PARK-SB-1-COMP

Manual Integrations
APPROVED
 Ankita
 8/22/2019 2:44:45 PM



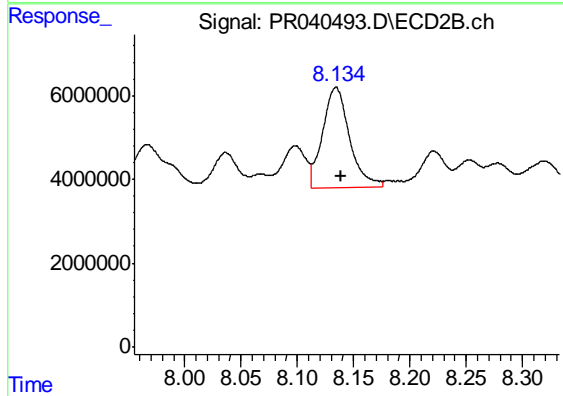
#33 AR-1260-3

R.T.: 7.910 min
 Delta R.T.: 0.000 min
 Response: 25003217
 Conc: 44.96 ng/ml



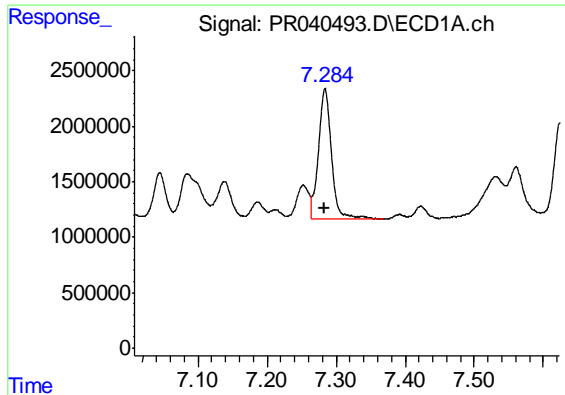
#34 AR-1260-4

R.T.: 7.045 min
 Delta R.T.: 0.000 min
 Response: 5391878
 Conc: 30.99 ng/ml



#34 AR-1260-4

R.T.: 8.134 min
 Delta R.T.: -0.005 min
 Response: 39824026
 Conc: 61.95 ng/ml



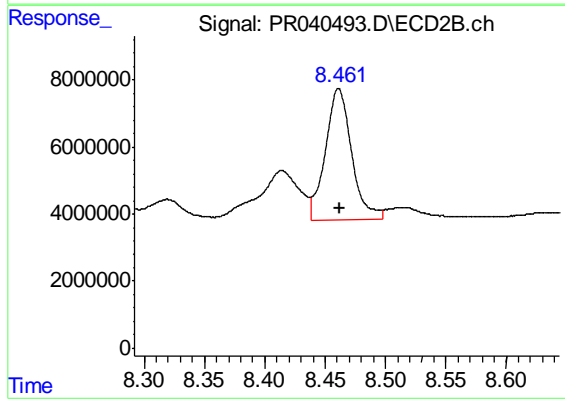
#35 AR-1260-5

R.T.: 7.284 min
Delta R.T.: 0.000 min
Response: 15614247
Conc: 35.59 ng/ml

Instrument :
ECD_R
ClientSampleId :
SUNSET-PARK-SB-1-COMP

Manual Integrations
APPROVED

Ankita
8/22/2019 2:44:45 PM



#35 AR-1260-5

R.T.: 8.461 min
Delta R.T.: -0.002 min
Response: 59159578
Conc: 42.00 ng/ml