

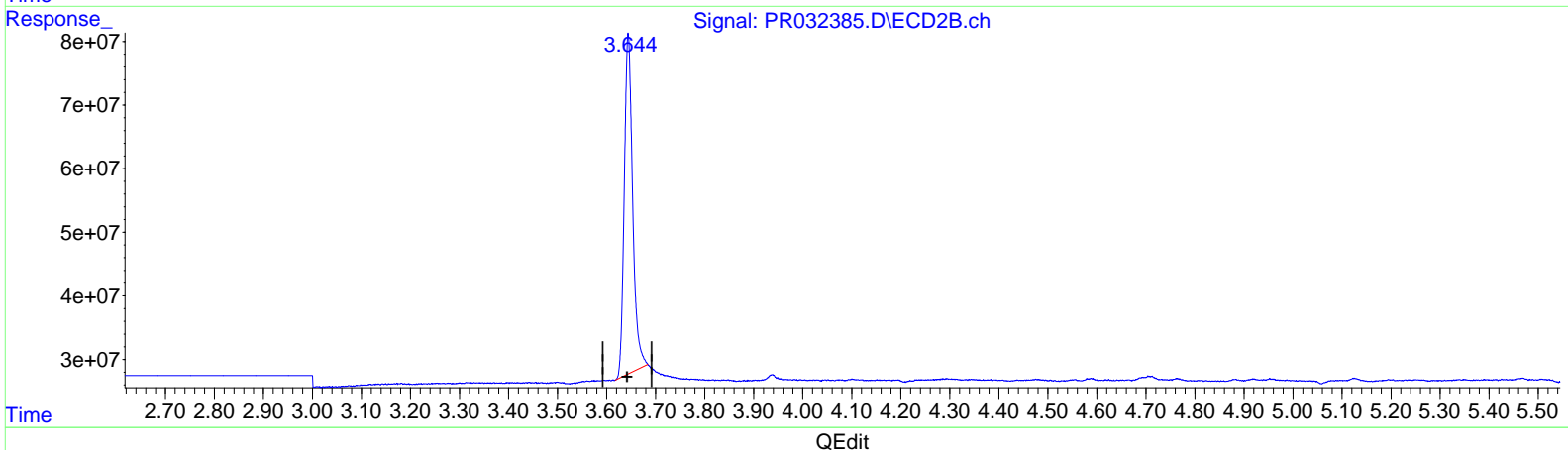
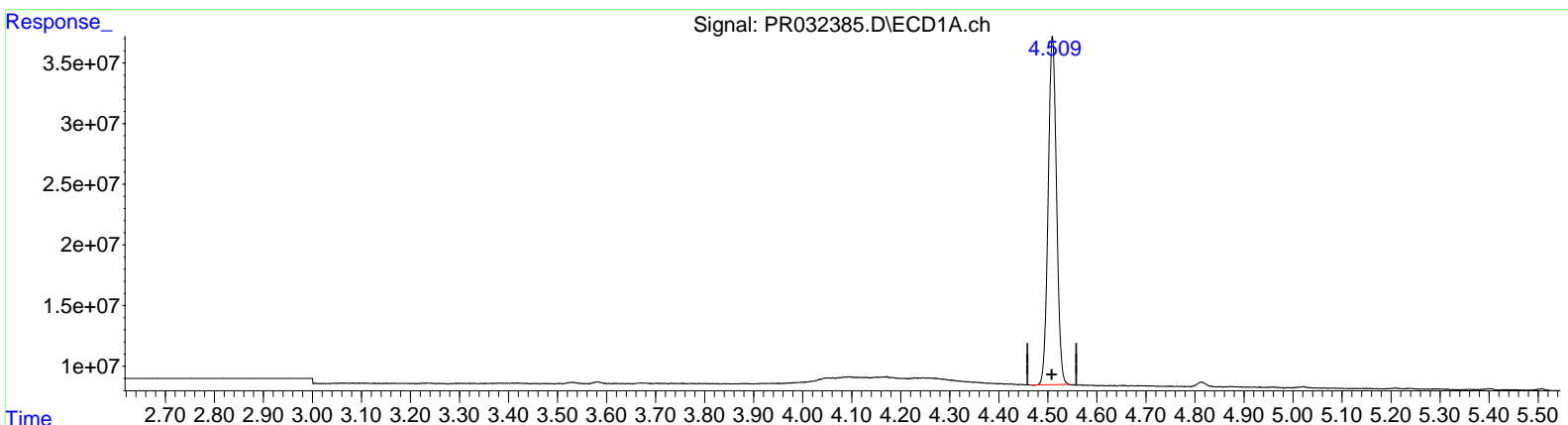
Data Path : Z:\pestpcbsrv\HPCHEM1\ECD\_R\Data\PR092818\  
 Data File : PR032385.D  
 Signal(s) : Signal #1: ECD1A.ch Signal #2: ECD2B.ch  
 Acq On : 28 Sep 2018 09:11  
 Operator : SM\SJ  
 Sample : AIBLK80  
 Misc :  
 ALS Vial : 2 Sample Multiplier: 1

**Instrument :**  
 ECD\_R  
**LabSampleId :**  
 AIBLK80

**Manual Integrations**  
**APPROVED**  
 Sohil  
 10/2/2018 6:35:12 AM

Integration File signal 1: autoint1.e  
 Integration File signal 2: autoint2.e  
 Quant Time: Sep 28 16:52:52 2018  
 Quant Method : Z:\pestpcbsrv\HPCHEM1\ECD\_R\Method\PR092818CLP.M  
 Quant Title : GC EXTRACTABLES  
 QLast Update : Fri Sep 28 16:51:09 2018  
 Response via : Initial Calibration  
 Integrator: ChemStation

Volume Inj. : 1 µl  
 Signal #1 Phase : ZB MR1 Signal #2 Phase: ZB MR2  
 Signal #1 Info : 30Mx0.32mmx 0.5µm Signal #2 Info : 30M x 0.32mm x 0.25µm



(1) Tetrachloro-m-xylene (SA)  
 4.509min 17.103 ng/ml  
 response 340091136

(1) Tetrachloro-m-xylene #2 (SA)  
 3.644min 18.341 ng/ml  
 response 637040999

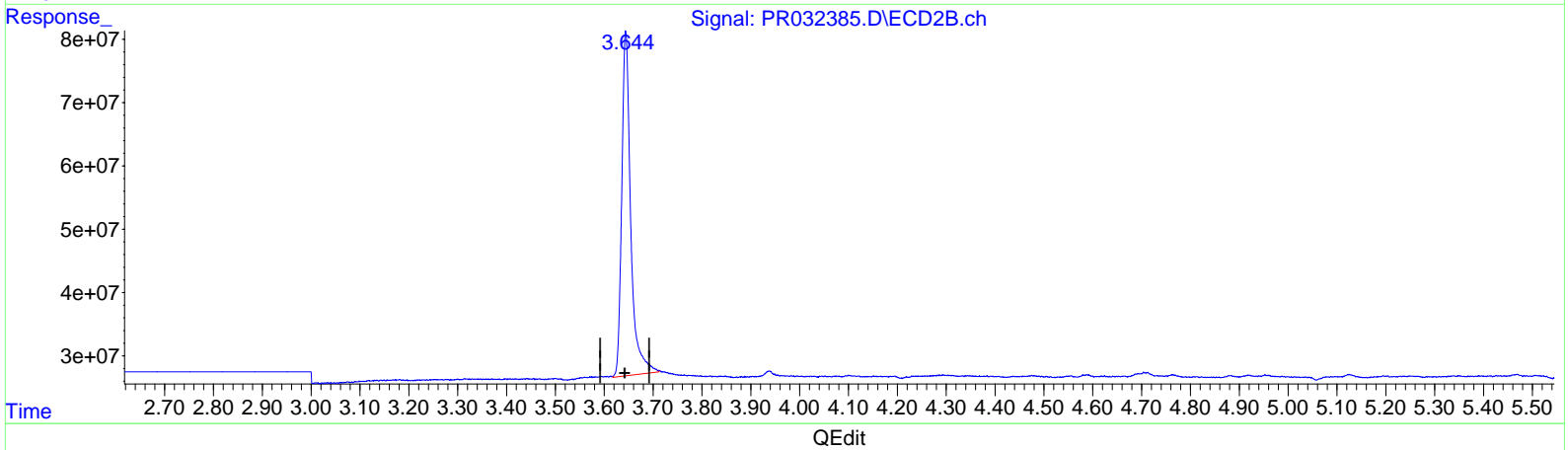
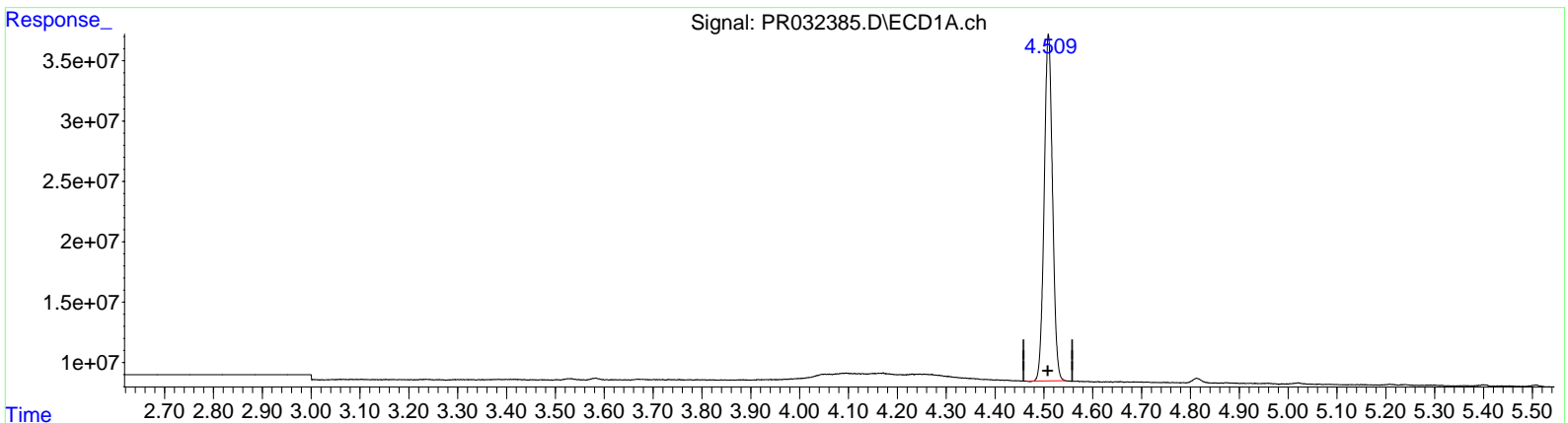
Data Path : Z:\pestpcbsrv\HPCHEM1\ECD\_R\Data\PR092818\  
 Data File : PR032385.D  
 Signal(s) : Signal #1: ECD1A.ch Signal #2: ECD2B.ch  
 Acq On : 28 Sep 2018 09:11  
 Operator : SM\SJ  
 Sample : AIBLK80  
 Misc :  
 ALS Vial : 2 Sample Multiplier: 1

**Instrument :**  
 ECD\_R  
**LabSampleId :**  
 AIBLK80

**Manual Integrations**  
**APPROVED**  
 Sohil  
 10/2/2018 6:35:12 AM

Integration File signal 1: autoint1.e  
 Integration File signal 2: autoint2.e  
 Quant Time: Sep 28 16:52:52 2018  
 Quant Method : Z:\pestpcbsrv\HPCHEM1\ECD\_R\Method\PR092818CLP.M  
 Quant Title : GC EXTRACTABLES  
 QLast Update : Fri Sep 28 16:51:09 2018  
 Response via : Initial Calibration  
 Integrator: ChemStation

Volume Inj. : 1 µl  
 Signal #1 Phase : ZB MR1 Signal #2 Phase: ZB MR2  
 Signal #1 Info : 30Mx0.32mmx 0.5µm Signal #2 Info : 30M x 0.32mm x 0.25µm



(1) Tetrachloro-m-xylene (SA)  
 4.509min 17.103 ng/ml  
 response 340091136

(1) Tetrachloro-m-xylene #2 (SA)  
 3.644min 20.021 ng/ml m  
 response 695375995

Quantitation Report (QT Reviewed)

Data Path : Z:\pestpcbsrv\HPCHEM1\ECD\_R\Data\PR092818\  
 Data File : PR032385.D  
 Signal(s) : Signal #1: ECD1A.ch Signal #2: ECD2B.ch  
 Acq On : 28 Sep 2018 09:11  
 Operator : SM\SJ  
 Sample : AIBLK80  
 Misc :  
 ALS Vial : 2 Sample Multiplier: 1

Instrument :  
 ECD\_R  
 LabSampleID :  
 AIBLK80

Manual Integrations  
 APPROVED

Sohil  
 10/2/2018 6:35:12 AM

Integration File signal 1: autoint1.e  
 Integration File signal 2: autoint2.e  
 Quant Time: Sep 28 16:52:52 2018  
 Quant Method : Z:\pestpcbsrv\HPCHEM1\ECD\_R\Method\PR092818CLP.M  
 Quant Title : GC EXTRACTABLES  
 QLast Update : Fri Sep 28 16:51:09 2018  
 Response via : Initial Calibration  
 Integrator: ChemStation

Volume Inj. : 1 µl  
 Signal #1 Phase : ZB MR1 Signal #2 Phase: ZB MR2  
 Signal #1 Info : 30Mx0.32mmx 0.5µm Signal #2 Info : 30M x 0.32mm x 0.25µm

Compound	RT#1	RT#2	Resp#1	Resp#2	ng/ml	ng/ml
-----						
System Monitoring Compounds						
1) SA Tetrachlo...	4.509	3.644	340.1E6	695.4E6	17.103	20.021m
2) SA Decachlor...	10.236	8.493	1286.4E6	1017.0E6	38.705	38.677

55 10/02/18

Target Compounds

(f)=RT Delta > 1/2 Window (#)=Amounts differ by > 25% (m)=manual int.