

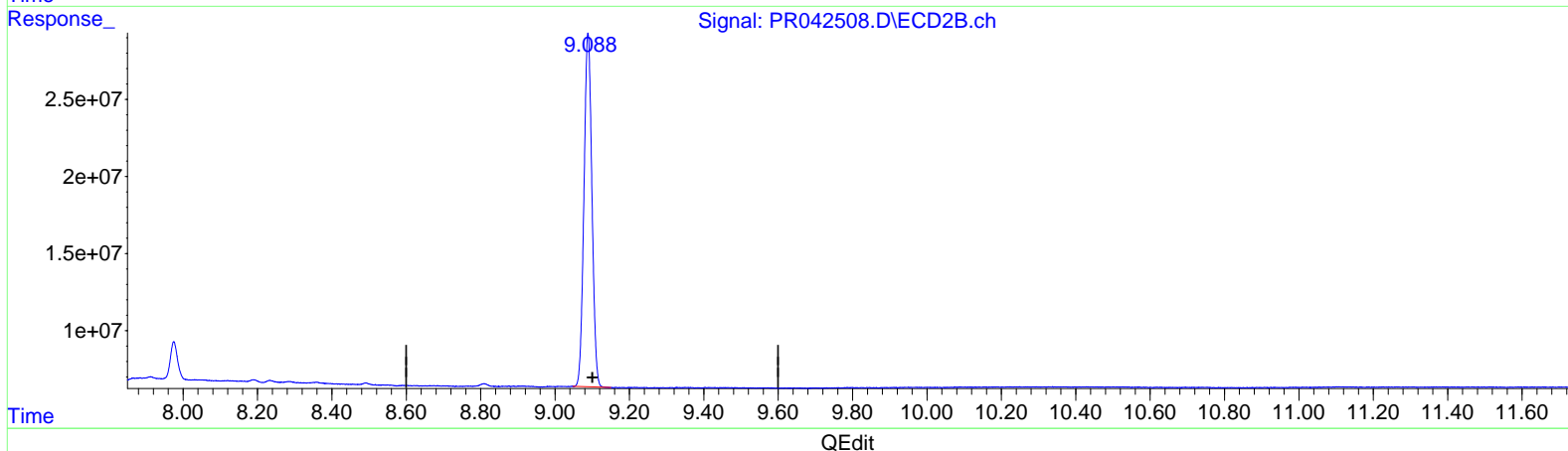
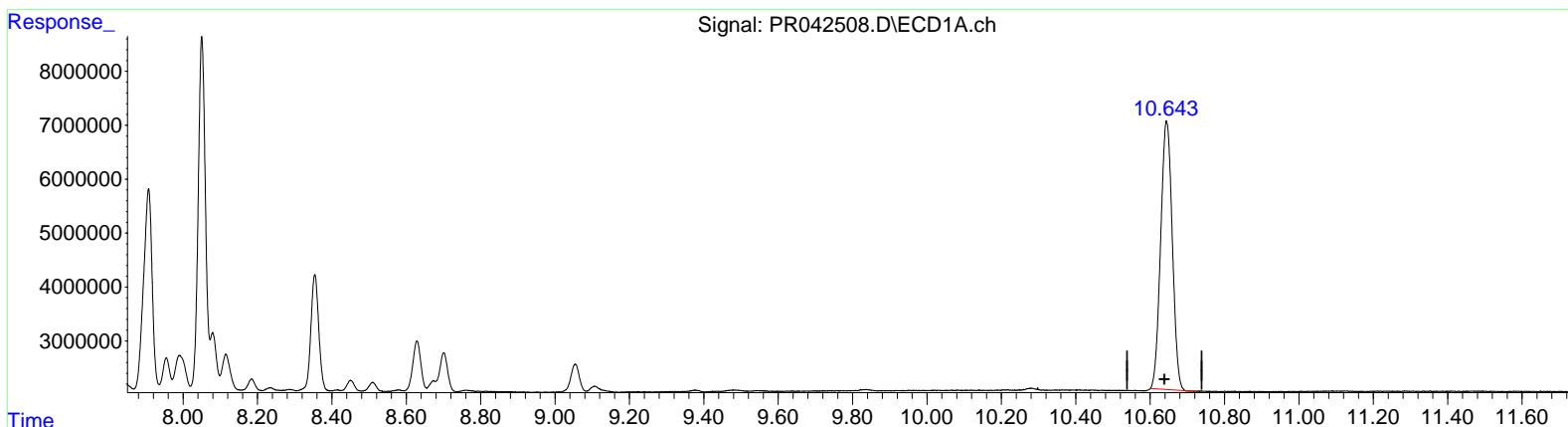
Data Path : Z:\pestpcbsrv\HPCHEM1\ECD_R\Data\PR102219\
 Data File : PR042508.D
 Signal(s) : Signal #1: ECD1A.ch Signal #2: ECD2B.ch
 Acq On : 23 Oct 2019 12:19
 Operator : SM\AJ
 Sample : AR1254CCC400
 Misc :
 ALS Vial : 5 Sample Multiplier: 1

Instrument :
 ECD_R
LabSampleId :
 AR1254388

Manual Integrations
APPROVED
 Ankita
 10/23/2019 1:27:39 PM

Integration File signal 1: autoint1.e
 Integration File signal 2: autoint2.e
 Quant Time: Oct 23 12:40:36 2019
 Quant Method : Z:\pestpcbsrv\HPCHEM1\ECD_R\Method\PR100319CLP.M
 Quant Title : GC EXTRACTABLES
 QLast Update : Fri Oct 04 06:59:35 2019
 Response via : Initial Calibration
 Integrator: ChemStation

Volume Inj. : 1 µl
 Signal #1 Phase : ZB MR1 Signal #2 Phase: ZB MR2
 Signal #1 Info : 30Mx0.32mmx 0.5µm Signal #2 Info : 30M x 0.32mm x 0.25µm



(2) Decachlorobiphenyl (SA)
 10.644min 31.278 ng/ml
 response 107476335

(2) Decachlorobiphenyl #2 (SA)
 9.089min 34.360 ng/ml
 response 340654001

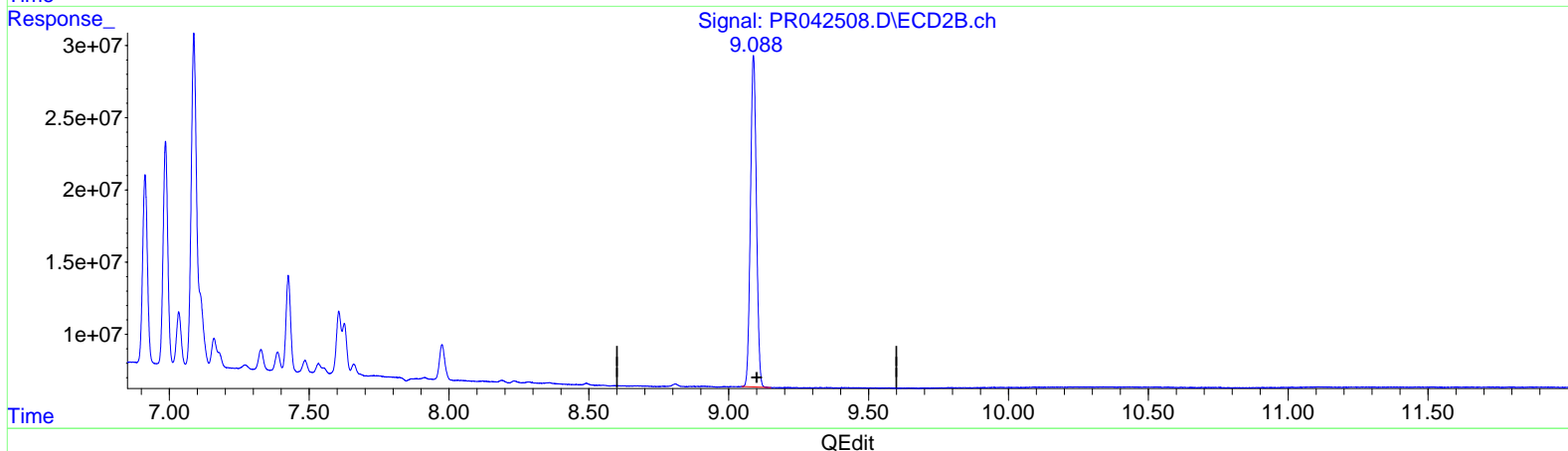
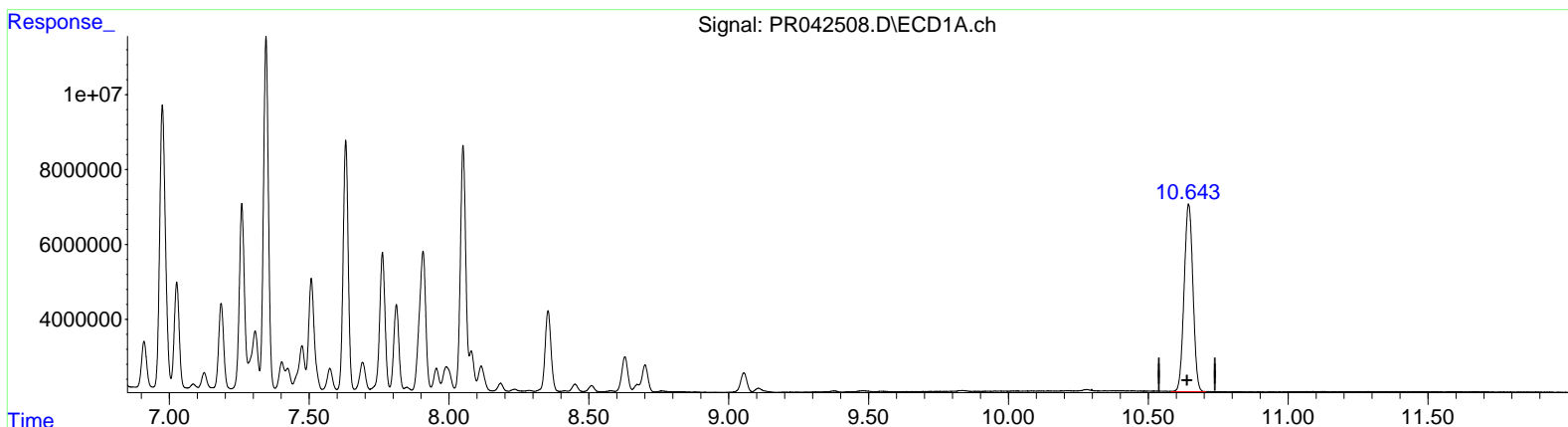
Data Path : Z:\pestpcbsrv\HPCHEM1\ECD_R\Data\PR102219\
 Data File : PR042508.D
 Signal(s) : Signal #1: ECD1A.ch Signal #2: ECD2B.ch
 Acq On : 23 Oct 2019 12:19
 Operator : SM\AJ
 Sample : AR1254CCC400
 Misc :
 ALS Vial : 5 Sample Multiplier: 1

Instrument :
 ECD_R
LabSampleID :
 AR1254388

Manual Integrations
APPROVED
 Ankita
 10/23/2019 1:27:39 PM

Integration File signal 1: autoint1.e
 Integration File signal 2: autoint2.e
 Quant Time: Oct 23 12:40:36 2019
 Quant Method : Z:\pestpcbsrv\HPCHEM1\ECD_R\Method\PR100319CLP.M
 Quant Title : GC EXTRACTABLES
 QLast Update : Fri Oct 04 06:59:35 2019
 Response via : Initial Calibration
 Integrator: ChemStation

Volume Inj. : 1 µl
 Signal #1 Phase : ZB MR1 Signal #2 Phase: ZB MR2
 Signal #1 Info : 30Mx0.32mmx 0.5µm Signal #2 Info : 30M x 0.32mm x 0.25µm



(2) Decachlorobiphenyl (SA)
 10.643min 31.878 ng/ml m
 response 109539362

(2) Decachlorobiphenyl #2 (SA)
 9.089min 34.360 ng/ml
 response 340654001

Data Path : Z:\pestpcbsrv\HPCHEM1\ECD_R\Data\PR102219\
 Data File : PR042508.D
 Signal(s) : Signal #1: ECD1A.ch Signal #2: ECD2B.ch
 Acq On : 23 Oct 2019 12:19
 Operator : SM\AJ
 Sample : AR1254CCC400
 Misc :
 ALS Vial : 5 Sample Multiplier: 1

Instrument :
 ECD_R
LabSampleId :
 AR1254388

Manual Integrations
APPROVED

Ankita
 10/23/2019 1:27:39 PM

Integration File signal 1: autoint1.e
 Integration File signal 2: autoint2.e
 Quant Time: Oct 23 12:40:36 2019
 Quant Method : Z:\pestpcbsrv\HPCHEM1\ECD_R\Method\PR100319CLP.M
 Quant Title : GC EXTRACTABLES
 QLast Update : Fri Oct 04 06:59:35 2019
 Response via : Initial Calibration
 Integrator: ChemStation

Volume Inj. : 1 µl
 Signal #1 Phase : ZB MR1 Signal #2 Phase: ZB MR2
 Signal #1 Info : 30Mx0.32mmx 0.5µm Signal #2 Info : 30M x 0.32mm x 0.25µm

Compound	RT#1	RT#2	Resp#1	Resp#2	ng/ml	ng/ml

System Monitoring Compounds						
1) SA Tetrachlo...	4.724	3.985	82561569	325.9E6	20.296	21.313
2) SA Decachlor...	10.643	9.089	109.5E6	340.7E6	31.878m	34.360
Target Compounds						
26) L6 AR-1254-1	6.759	5.888	68738512	245.0E6	420.903	462.418
27) L6 AR-1254-2	6.975	6.035	108.0E6	220.8E6	435.494	440.352
28) L6 AR-1254-3	7.346	6.441	116.0E6	398.6E6	429.700	422.464
29) L6 AR-1254-4	7.631	6.669	83321008	281.4E6	410.536	425.073
30) L6 AR-1254-5	8.050	7.088	88538867	354.1E6	416.353	412.364

3 AJ
 10/24/19

(f)=RT Delta > 1/2 Window (#)=Amounts differ by > 25% (m)=manual int.