

Data Path : Z:\pestpcbsrv\HPCHEM1\ECD\_R\Data\PR111719\  
 Data File : PR043165.D  
 Signal(s) : Signal #1: ECD1A.ch Signal #2: ECD2B.ch  
 Acq On : 17 Nov 2019 12:28  
 Operator : SM\AJ  
 Sample : PB124873BS  
 Misc :  
 ALS Vial : 6 Sample Multiplier: 1

Instrument :  
 ECD\_R  
 ClientSampleId :  
 PB124873BS

Integration File signal 1: autoint1.e  
 Integration File signal 2: autoint2.e  
 Quant Time: Nov 19 06:00:21 2019  
 Quant Method : Z:\pestpcbsrv\HPCHEM1\ECD\_R\Method\PR111519.M  
 Quant Title : GC EXTRACTABLES  
 QLast Update : Tue Nov 19 05:29:57 2019  
 Response via : Initial Calibration  
 Integrator: ChemStation

Volume Inj. : 2 µl  
 Signal #1 Phase : ZB-MR1 Signal #2 Phase: ZB-MR2  
 Signal #1 Info : 30Mx0.32mmx 0.50µ Signal #2 Info : 30M x 0.32mm x 0.25µm

Compound	RT#1	RT#2	Resp#1	Resp#2	ng/ml	ng/ml
----------	------	------	--------	--------	-------	-------

System Monitoring Compounds

1) SA Tetrachlo...	4.711	3.971	49464811	159.2E6	16.702	16.746
2) SA Decachlor...	10.622	9.064	84884514	213.2E6	24.275	25.081

Target Compounds

3) L1 AR-1016-1	5.887	5.063	23890420	69653257	186.249	186.782
4) L1 AR-1016-2	5.910	5.083	33385796	93245306	184.385	181.824
5) L1 AR-1016-3	5.973	5.261	20663288	43474217	184.778	190.122
6) L1 AR-1016-4	6.074	5.300	17015599	35710507	183.458	193.573
7) L1 AR-1016-5	6.367	5.517	17907939	32863846	192.302	198.351
8) L2 AR-1221-1	0.000	4.180	0	7766282	N.D.	64.683 #
9) L2 AR-1221-2	0.000	4.270	0	8637339	N.D.	94.463 #
10) L2 AR-1221-3	5.085	4.346	10612415	33656807	118.279	119.377
11) L3 AR-1232-1	5.085	4.346	10612415	33656807	83.372	82.564
12) L3 AR-1232-2	5.619	5.083	15208686	93245306	225.133	227.699
13) L3 AR-1232-3	5.910	5.261	33385796	43474217	229.752	233.017
14) L3 AR-1232-4	6.074	5.343	17015599	41666311	228.822	270.167
15) L3 AR-1232-5	6.160	5.517	14400174	32863846	251.985	274.935
16) L4 AR-1242-1	5.887	5.063	23890420	69653257	231.461	232.780
17) L4 AR-1242-2	5.910	5.083	33385796	93245306	226.729	227.188
18) L4 AR-1242-3	5.973	5.261	20663288	43474217	228.868	224.277
19) L4 AR-1242-4	6.074	5.343	17015599	41666311	227.525	234.277
20) L4 AR-1242-5	6.745	5.870	6688167	29906084	73.726	115.496 #
21) L5 AR-1248-1	5.887	5.063	23890420	69653257	337.757	330.908
22) L5 AR-1248-2	6.160	5.300	14400174	35710507	141.530	155.284
23) L5 AR-1248-3	6.367	5.343	17907939	41666311	154.302	182.359
24) L5 AR-1248-4	6.745	5.517	6688167	32863846	46.368	161.900 #
25) L5 AR-1248-5	6.745	5.911	6688167	7631376	49.132	24.115 #
26) L6 AR-1254-1	6.745	5.870	6688167	29906084	47.522	65.935 #
27) L6 AR-1254-2	6.961	6.017	11464998	31670230	53.853	72.317 #
28) L6 AR-1254-3	7.335	6.437	13909078	82441047	53.205	105.347 #
29) L6 AR-1254-4	7.617	6.650	7952592	8576427	38.922	14.456 #
30) L6 AR-1254-5	8.036	7.069	52318416	129.4E6	236.654	170.372 #
31) L7 AR-1260-1	7.493	6.553	34821905	94473901	191.379	184.419
32) L7 AR-1260-2	7.749	6.739	43324822	145.5E6	181.651	204.390
33) L7 AR-1260-3	8.110	6.895	35820599	110.8E6	190.991	188.066
34) L7 AR-1260-4	8.348	7.367	39618722	97919279	191.887	194.095
35) L7 AR-1260-5	8.687	7.607	85041576	293.7E6	197.153	205.029
36) L8 AR-1262-1	8.110	7.161	35820599	61483711	127.645	165.873 #
37) L8 AR-1262-2	8.687	7.607	85041576	293.7E6	161.323	163.761
38) L8 AR-1262-3	9.038	7.892	55544278	69429998	165.476	102.647 #
39) L8 AR-1262-4	9.094	7.957	34185126	195.7E6	264.341	165.203 #
40) L8 AR-1262-5	9.815	8.472	27669252	77937577	169.717	152.467
41) L9 AR-1268-1	9.038	7.892	55544278	69429998	91.555	33.818 #
42) L9 AR-1268-2	9.094	7.957	34185126	195.7E6	62.355	109.628 #

Data Path : Z:\pestpcbsrv\HPCHEM1\ECD\_R\Data\PR111719\  
 Data File : PR043165.D  
 Signal(s) : Signal #1: ECD1A.ch Signal #2: ECD2B.ch  
 Acq On : 17 Nov 2019 12:28  
 Operator : SM\AJ  
 Sample : PB124873BS  
 Misc :  
 ALS Vial : 6 Sample Multiplier: 1

Instrument :  
 ECD\_R  
 ClientSampleId :  
 PB124873BS

Integration File signal 1: autoint1.e  
 Integration File signal 2: autoint2.e  
 Quant Time: Nov 19 06:00:21 2019  
 Quant Method : Z:\pestpcbsrv\HPCHEM1\ECD\_R\Method\PR111519.M  
 Quant Title : GC EXTRACTABLES  
 QLast Update : Tue Nov 19 05:29:57 2019  
 Response via : Initial Calibration  
 Integrator: ChemStation

Volume Inj. : 2 µl  
 Signal #1 Phase : ZB-MR1 Signal #2 Phase: ZB-MR2  
 Signal #1 Info : 30Mx0.32mmx 0.50µ Signal #2 Info : 30M x 0.32mm x 0.25µm

	Compound	RT#1	RT#2	Resp#1	Resp#2	ng/ml	ng/ml
44)	L9 AR-1268-4	9.815	8.472	27669252	77937577	149.482	135.934
45)	L9 AR-1268-5	0.000	8.787	0	27430778	N.D.	6.740 #

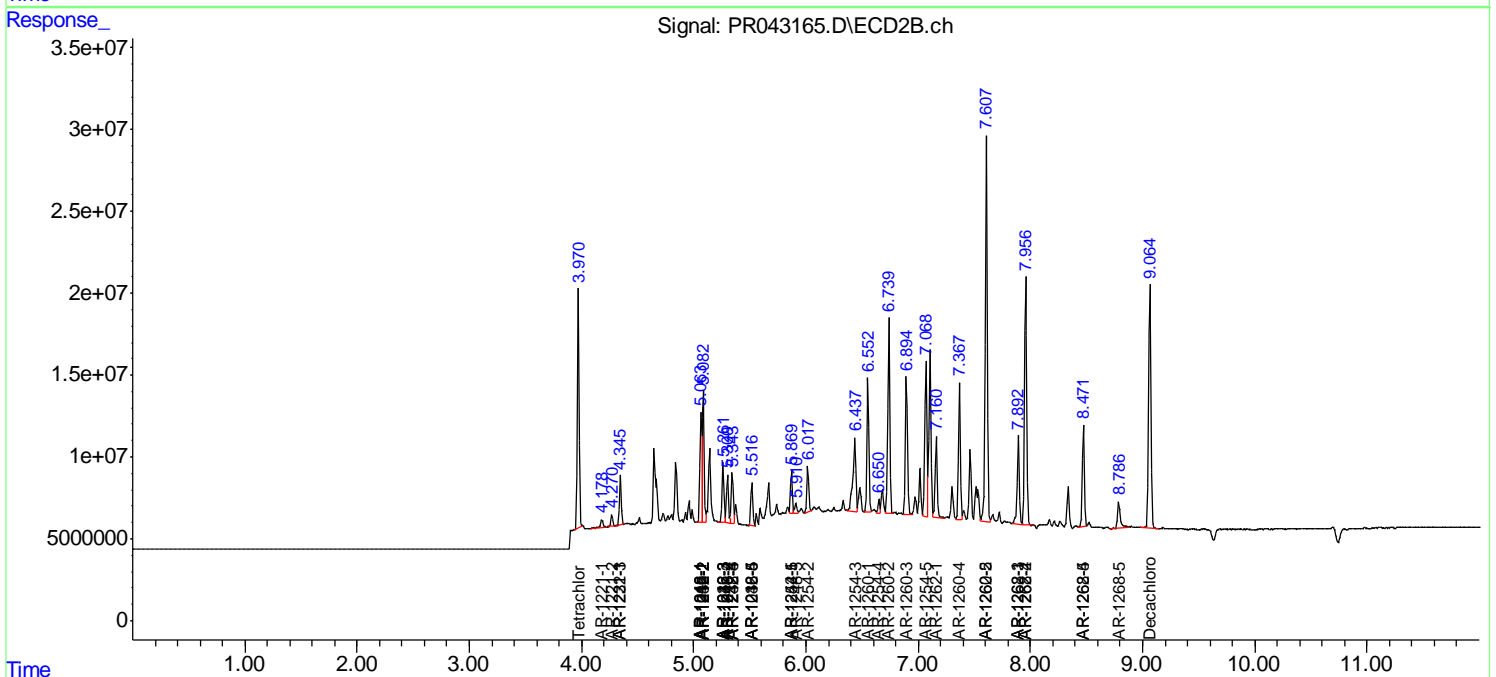
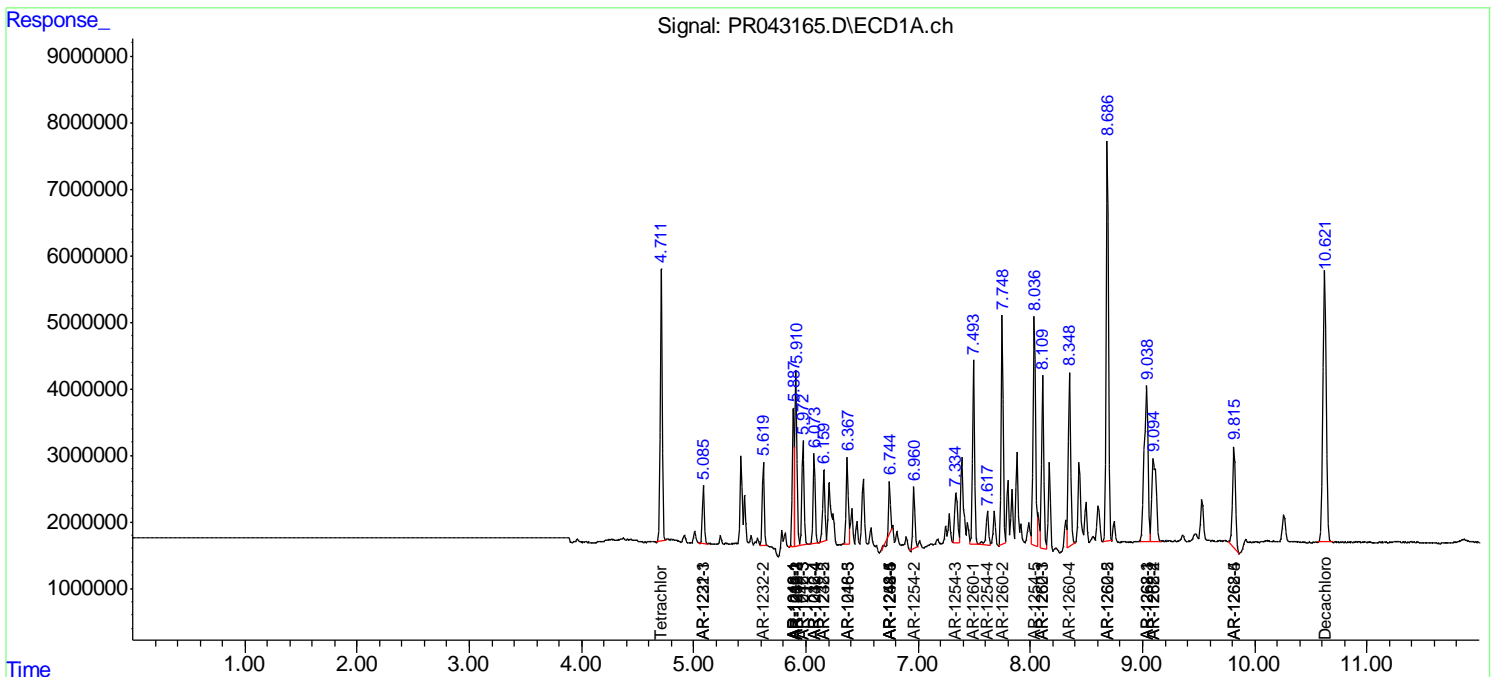
(f)=RT Delta > 1/2 Window (#)=Amounts differ by > 25% (m)=manual int.

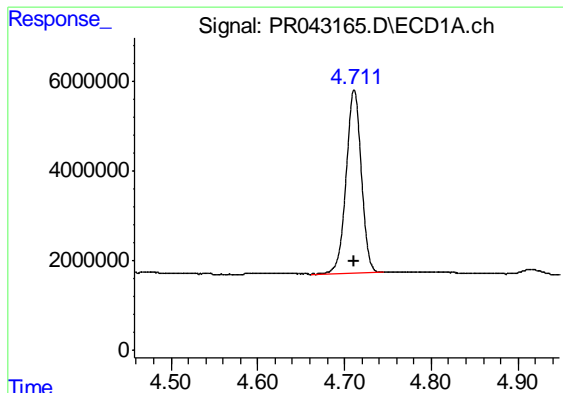
Data Path : Z:\pestpcbsrv\HPCHEM1\ECD\_R\Data\PR111719\  
 Data File : PR043165.D  
 Signal(s) : Signal #1: ECD1A.ch Signal #2: ECD2B.ch  
 Acq On : 17 Nov 2019 12:28  
 Operator : SM\AJ  
 Sample : PB124873BS  
 Misc :  
 ALS Vial : 6 Sample Multiplier: 1

Instrument :  
 ECD\_R  
 ClientSampled :  
 PB124873BS

Integration File signal 1: autoint1.e  
 Integration File signal 2: autoint2.e  
 Quant Time: Nov 19 06:00:21 2019  
 Quant Method : Z:\pestpcbsrv\HPCHEM1\ECD\_R\Method\PR111519.M  
 Quant Title : GC EXTRACTABLES  
 QLast Update : Tue Nov 19 05:29:57 2019  
 Response via : Initial Calibration  
 Integrator: ChemStation

Volume Inj. : 2 µl  
 Signal #1 Phase : ZB-MR1 Signal #2 Phase: ZB-MR2  
 Signal #1 Info : 30Mx0.32mmx 0.50µ Signal #2 Info : 30M x 0.32mm x 0.25µm

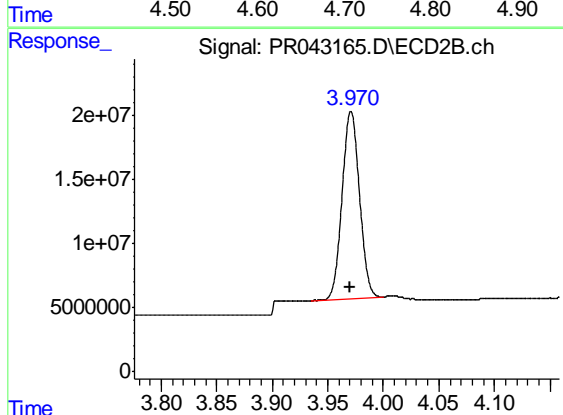




#1 Tetrachloro-m-xylene

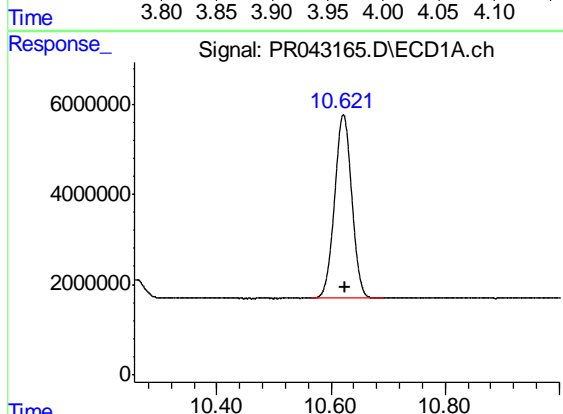
R.T.: 4.711 min  
Delta R.T.: 0.000 min  
Response: 49464811  
Conc: 16.70 ng/ml

Instrument :  
ECD\_R  
ClientSampleId :  
PB124873BS



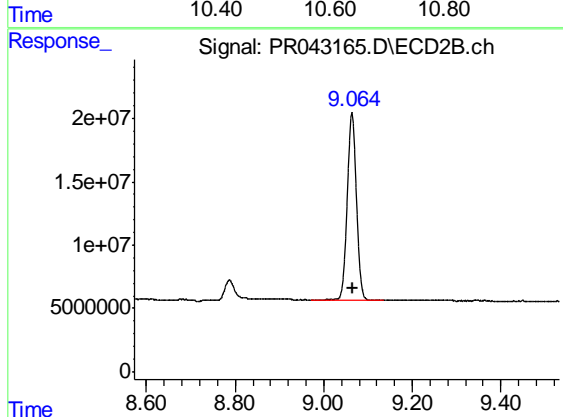
#1 Tetrachloro-m-xylene

R.T.: 3.971 min  
Delta R.T.: 0.001 min  
Response: 159159583  
Conc: 16.75 ng/ml



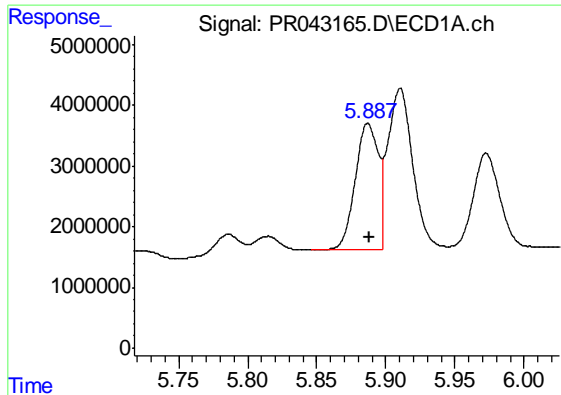
#2 Decachlorobiphenyl

R.T.: 10.622 min  
Delta R.T.: -0.004 min  
Response: 84884514  
Conc: 24.27 ng/ml



#2 Decachlorobiphenyl

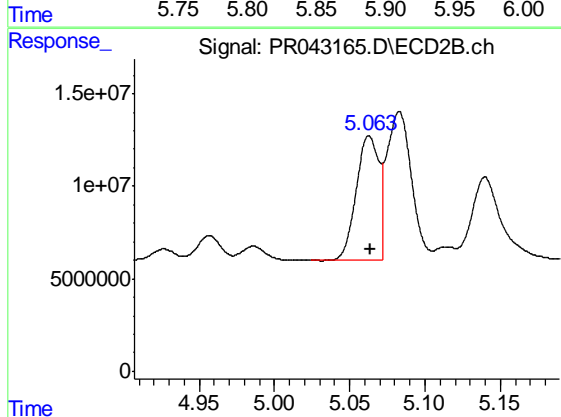
R.T.: 9.064 min  
Delta R.T.: -0.002 min  
Response: 213191346  
Conc: 25.08 ng/ml



#3 AR-1016-1

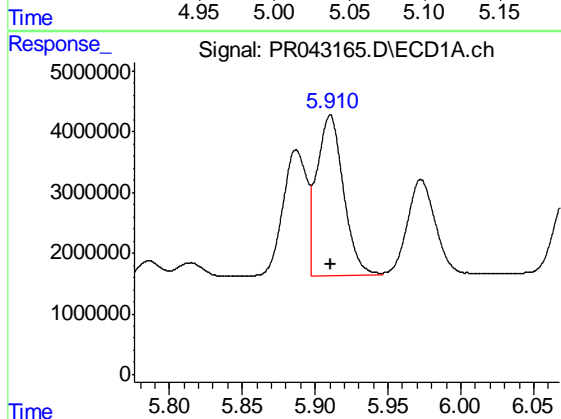
R.T.: 5.887 min  
Delta R.T.: -0.001 min  
Response: 23890420  
Conc: 186.25 ng/ml

Instrument :  
ECD\_R  
ClientSampleId :  
PB124873BS



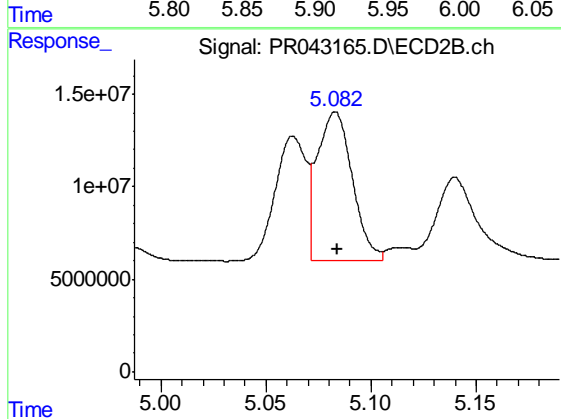
#3 AR-1016-1

R.T.: 5.063 min  
Delta R.T.: 0.000 min  
Response: 69653257  
Conc: 186.78 ng/ml



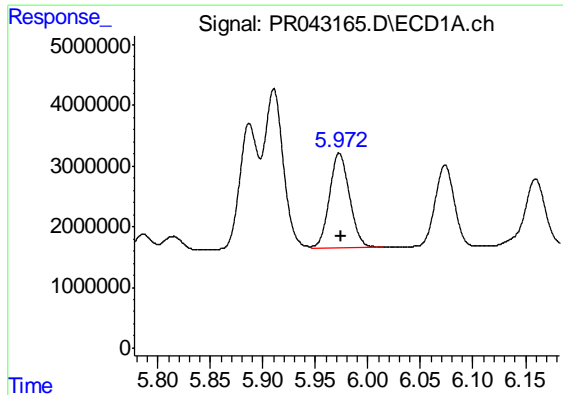
#4 AR-1016-2

R.T.: 5.910 min  
Delta R.T.: 0.000 min  
Response: 33385796  
Conc: 184.39 ng/ml



#4 AR-1016-2

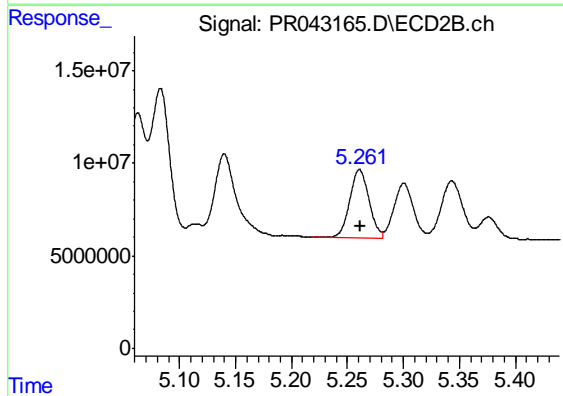
R.T.: 5.083 min  
Delta R.T.: 0.000 min  
Response: 93245306  
Conc: 181.82 ng/ml



#5 AR-1016-3

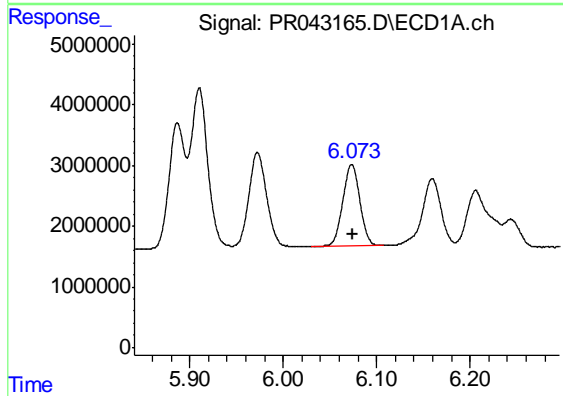
R.T.: 5.973 min  
 Delta R.T.: -0.002 min  
 Response: 20663288  
 Conc: 184.78 ng/ml

Instrument :  
 ECD\_R  
 ClientSampleId :  
 PB124873BS



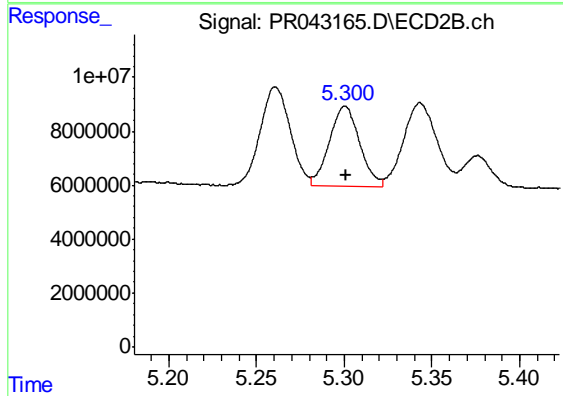
#5 AR-1016-3

R.T.: 5.261 min  
 Delta R.T.: -0.001 min  
 Response: 43474217  
 Conc: 190.12 ng/ml



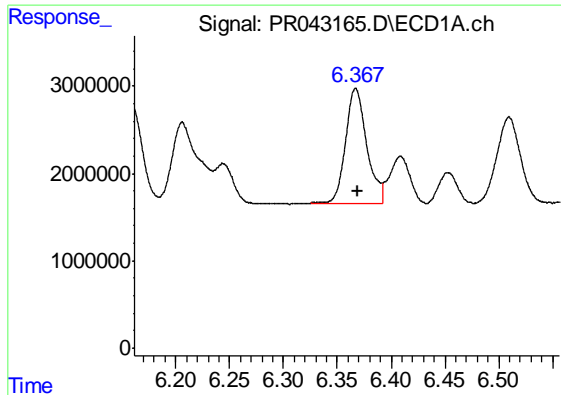
#6 AR-1016-4

R.T.: 6.074 min  
 Delta R.T.: 0.000 min  
 Response: 17015599  
 Conc: 183.46 ng/ml



#6 AR-1016-4

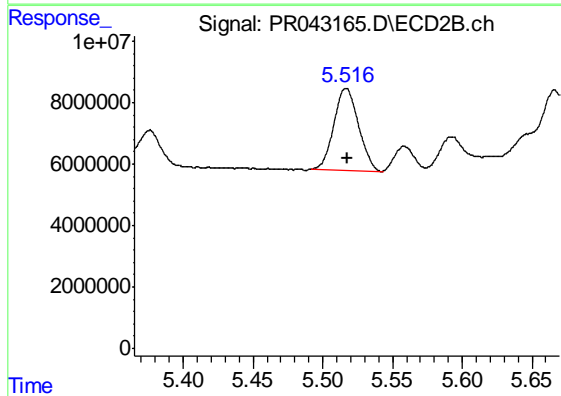
R.T.: 5.300 min  
 Delta R.T.: 0.000 min  
 Response: 35710507  
 Conc: 193.57 ng/ml



#7 AR-1016-5

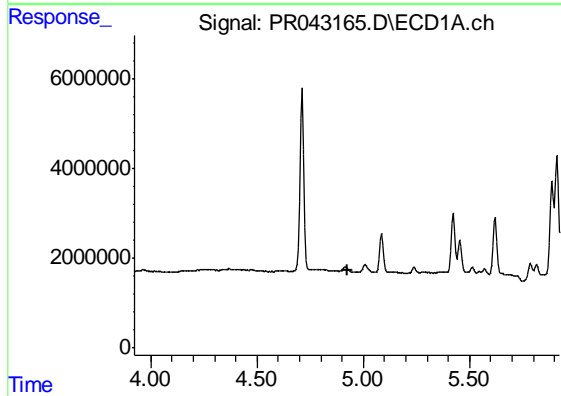
R.T.: 6.367 min  
 Delta R.T.: -0.001 min  
 Response: 17907939  
 Conc: 192.30 ng/ml

Instrument :  
 ECD\_R  
 ClientSampleId :  
 PB124873BS



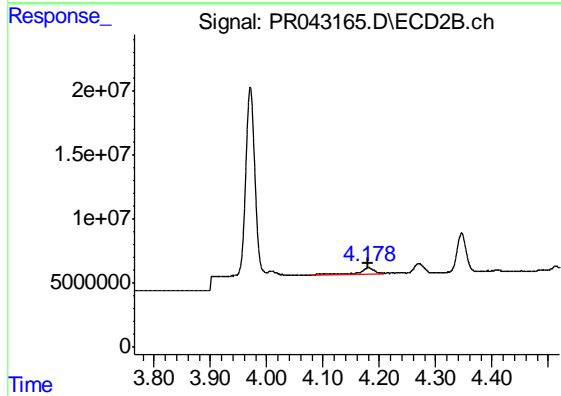
#7 AR-1016-5

R.T.: 5.517 min  
 Delta R.T.: -0.001 min  
 Response: 32863846  
 Conc: 198.35 ng/ml



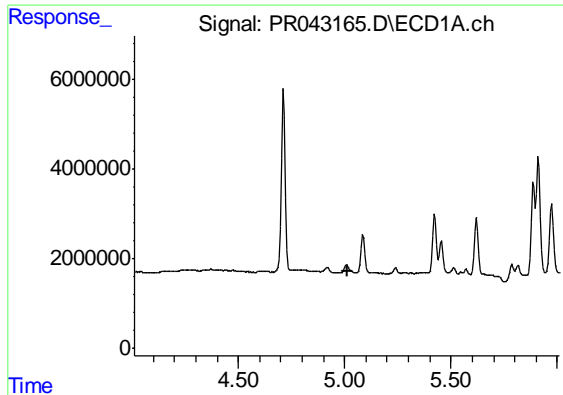
#8 AR-1221-1

R.T.: 0.000 min  
 Exp R.T. : 4.923 min  
 Response: 0  
 Conc: N.D.



#8 AR-1221-1

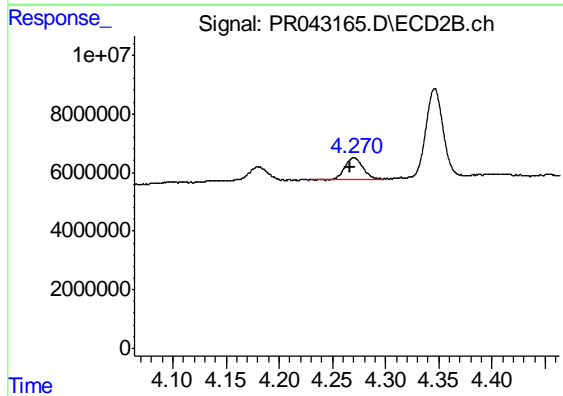
R.T.: 4.180 min  
 Delta R.T.: 0.000 min  
 Response: 7766282  
 Conc: 64.68 ng/ml



#9 AR-1221-2

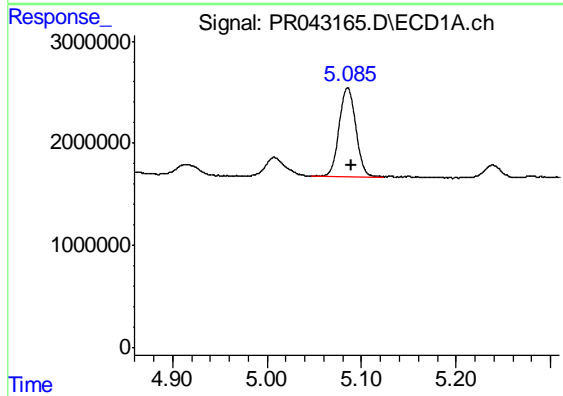
R.T.: 0.000 min  
 Exp R.T. : 5.011 min  
 Response: 0  
 Conc: N.D.

Instrument :  
 ECD\_R  
 ClientSampleId :  
 PB124873BS



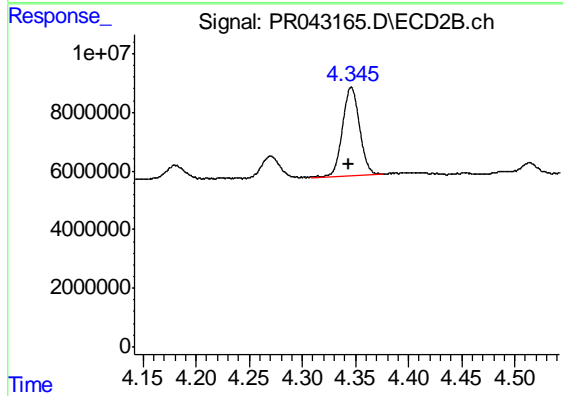
#9 AR-1221-2

R.T.: 4.270 min  
 Delta R.T.: 0.003 min  
 Response: 8637339  
 Conc: 94.46 ng/ml



#10 AR-1221-3

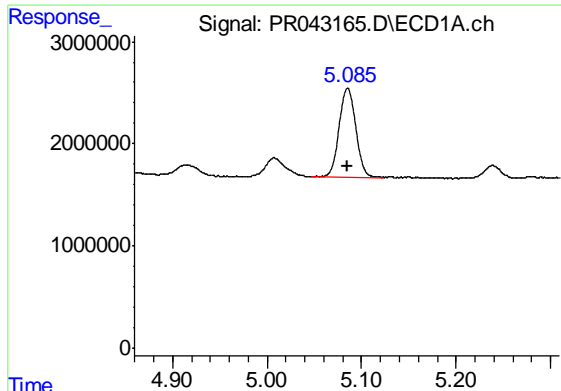
R.T.: 5.085 min  
 Delta R.T.: -0.004 min  
 Response: 10612415  
 Conc: 118.28 ng/ml



#10 AR-1221-3

R.T.: 4.346 min  
 Delta R.T.: 0.002 min  
 Response: 33656807  
 Conc: 119.38 ng/ml

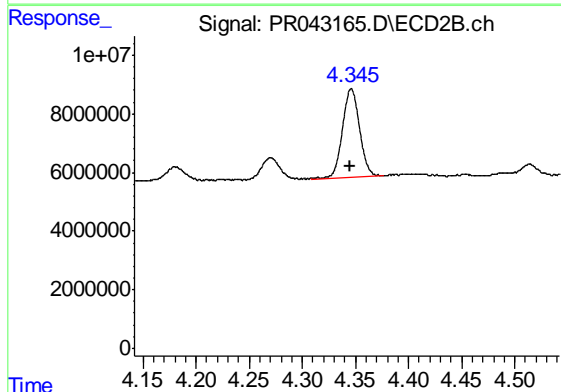




#11 AR-1232-1

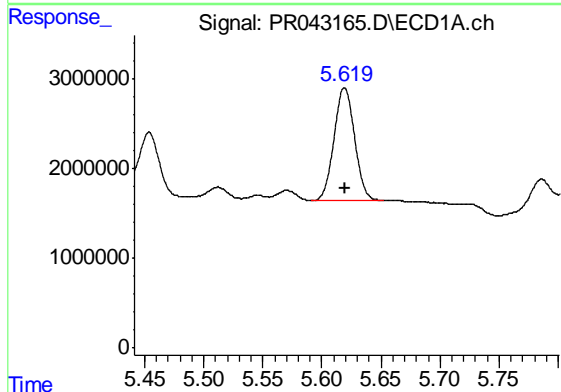
R.T.: 5.085 min  
 Delta R.T.: 0.000 min  
 Response: 10612415  
 Conc: 83.37 ng/ml

Instrument :  
 ECD\_R  
 ClientSampleId :  
 PB124873BS



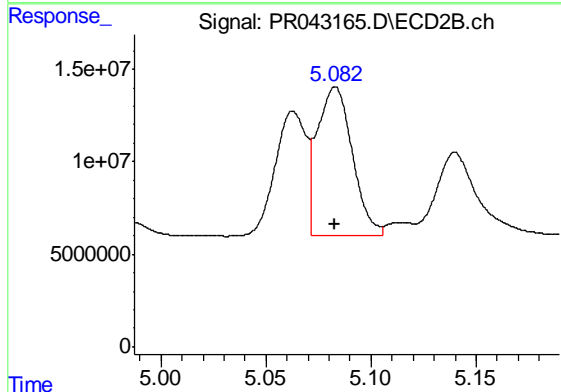
#11 AR-1232-1

R.T.: 4.346 min  
 Delta R.T.: 0.001 min  
 Response: 33656807  
 Conc: 82.56 ng/ml



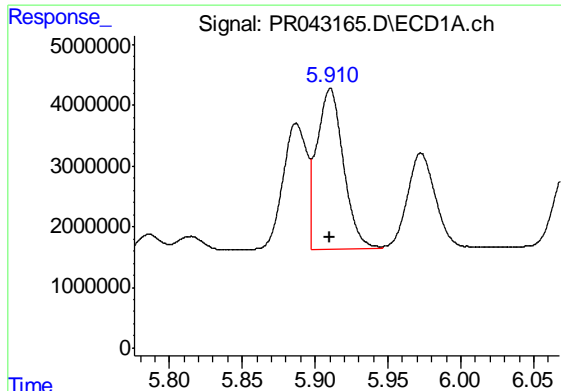
#12 AR-1232-2

R.T.: 5.619 min  
 Delta R.T.: 0.000 min  
 Response: 15208686  
 Conc: 225.13 ng/ml



#12 AR-1232-2

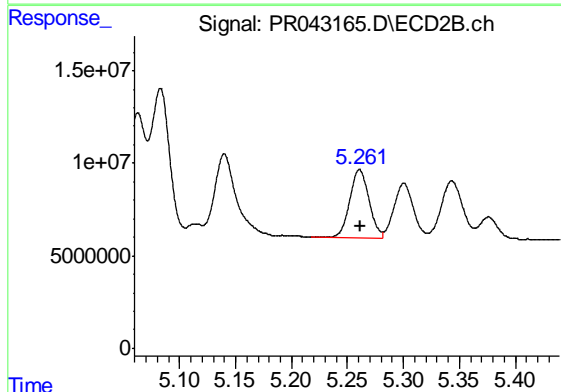
R.T.: 5.083 min  
 Delta R.T.: 0.000 min  
 Response: 93245306  
 Conc: 227.70 ng/ml



#13 AR-1232-3

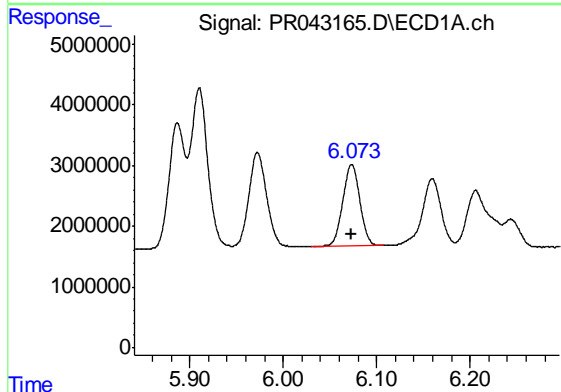
R.T.: 5.910 min  
 Delta R.T.: 0.000 min  
 Response: 33385796  
 Conc: 229.75 ng/ml

Instrument :  
 ECD\_R  
 ClientSampleId :  
 PB124873BS



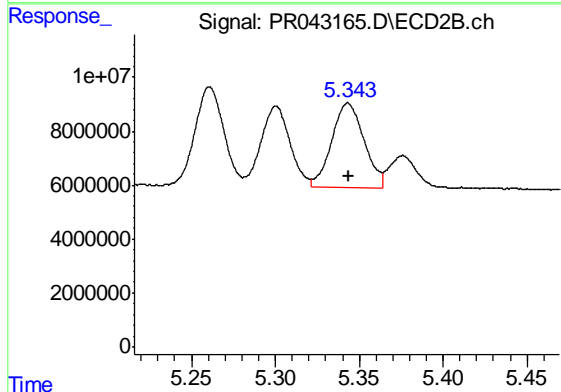
#13 AR-1232-3

R.T.: 5.261 min  
 Delta R.T.: 0.000 min  
 Response: 43474217  
 Conc: 233.02 ng/ml



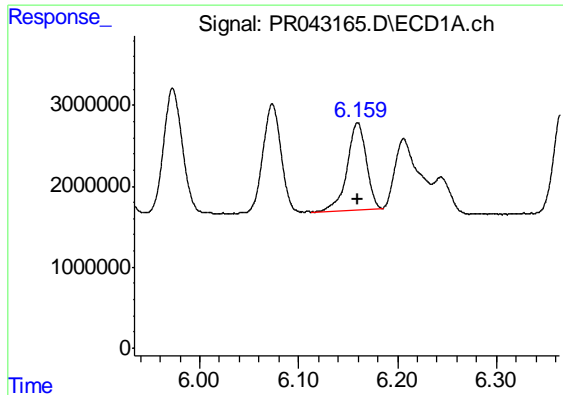
#14 AR-1232-4

R.T.: 6.074 min  
 Delta R.T.: 0.000 min  
 Response: 17015599  
 Conc: 228.82 ng/ml



#14 AR-1232-4

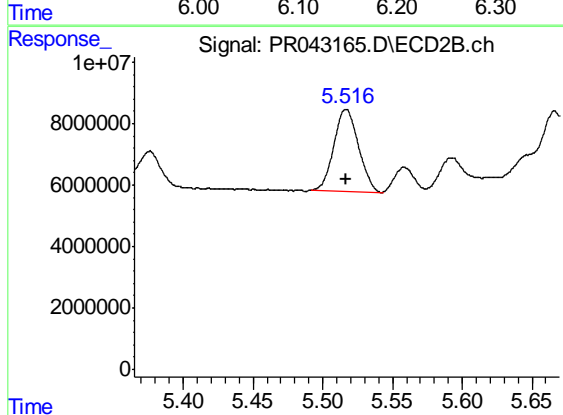
R.T.: 5.343 min  
 Delta R.T.: 0.000 min  
 Response: 41666311  
 Conc: 270.17 ng/ml



#15 AR-1232-5

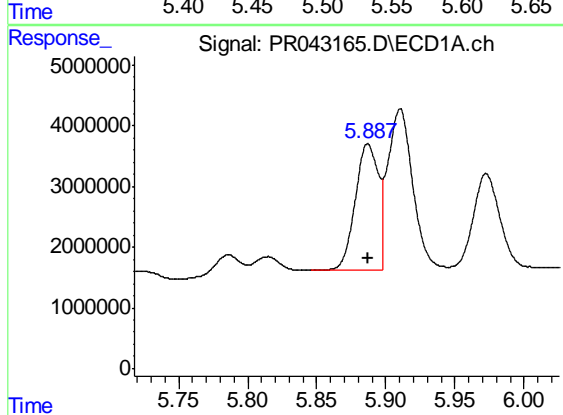
R.T.: 6.160 min  
 Delta R.T.: 0.000 min  
 Response: 14400174  
 Conc: 251.98 ng/ml

Instrument :  
 ECD\_R  
 ClientSampleId :  
 PB124873BS



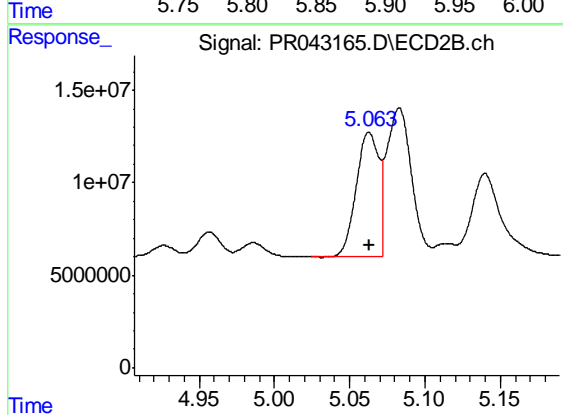
#15 AR-1232-5

R.T.: 5.517 min  
 Delta R.T.: 0.000 min  
 Response: 32863846  
 Conc: 274.94 ng/ml



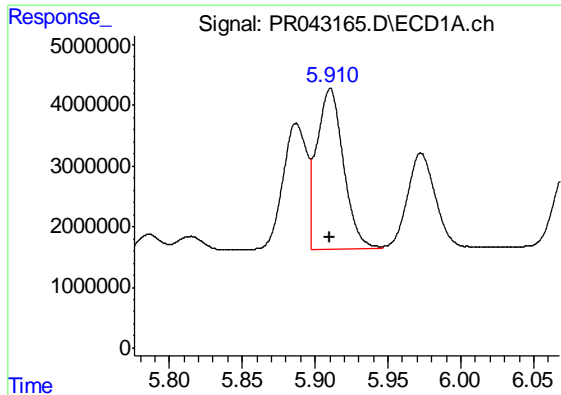
#16 AR-1242-1

R.T.: 5.887 min  
 Delta R.T.: 0.000 min  
 Response: 23890420  
 Conc: 231.46 ng/ml



#16 AR-1242-1

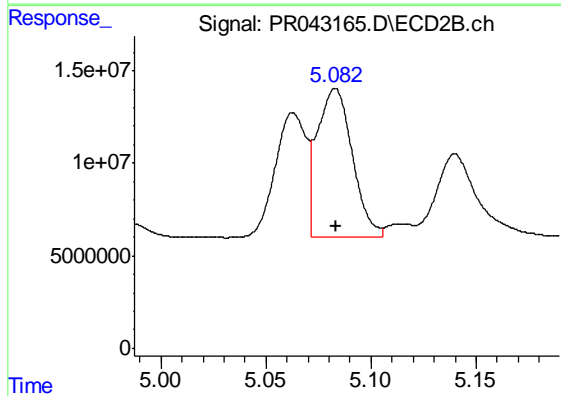
R.T.: 5.063 min  
 Delta R.T.: 0.000 min  
 Response: 69653257  
 Conc: 232.78 ng/ml



#17 AR-1242-2

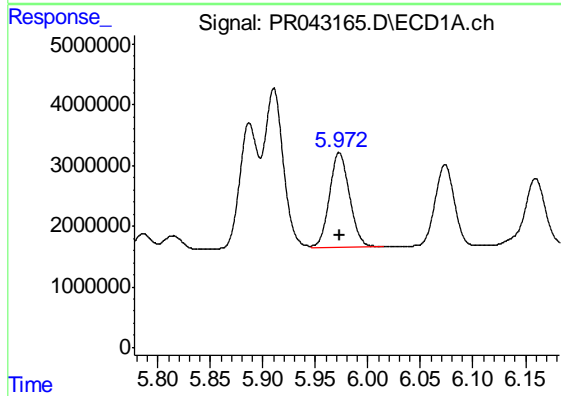
R.T.: 5.910 min  
 Delta R.T.: 0.000 min  
 Response: 33385796  
 Conc: 226.73 ng/ml

Instrument :  
 ECD\_R  
 ClientSampleId :  
 PB124873BS



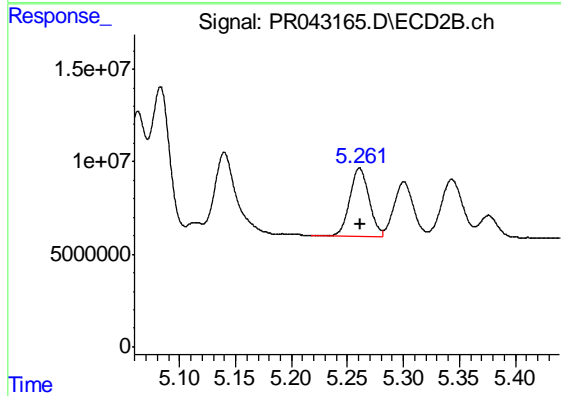
#17 AR-1242-2

R.T.: 5.083 min  
 Delta R.T.: 0.000 min  
 Response: 93245306  
 Conc: 227.19 ng/ml



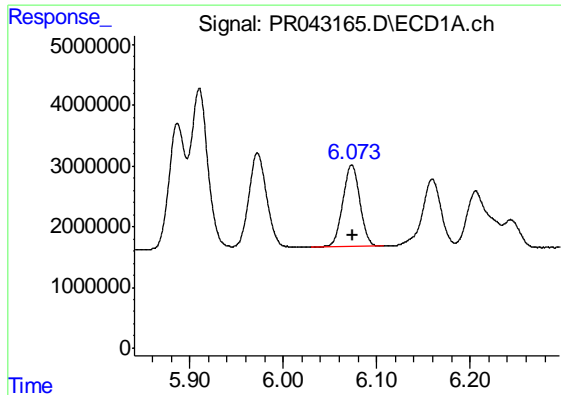
#18 AR-1242-3

R.T.: 5.973 min  
 Delta R.T.: 0.000 min  
 Response: 20663288  
 Conc: 228.87 ng/ml



#18 AR-1242-3

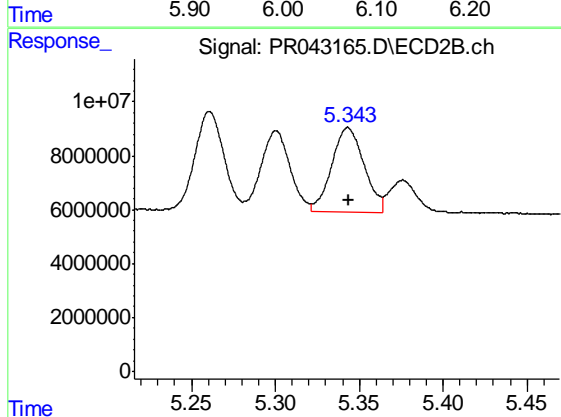
R.T.: 5.261 min  
 Delta R.T.: 0.000 min  
 Response: 43474217  
 Conc: 224.28 ng/ml



#19 AR-1242-4

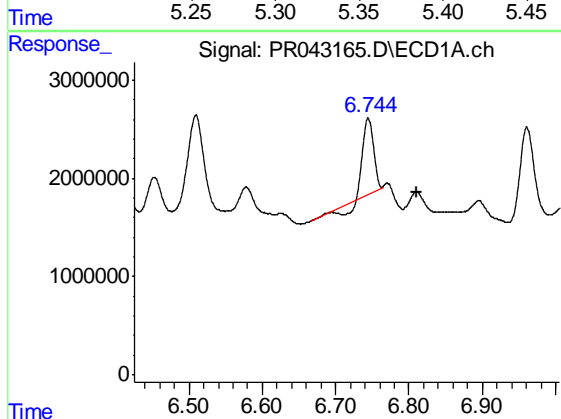
R.T.: 6.074 min  
 Delta R.T.: 0.000 min  
 Response: 17015599  
 Conc: 227.52 ng/ml

Instrument :  
 ECD\_R  
 ClientSampleId :  
 PB124873BS



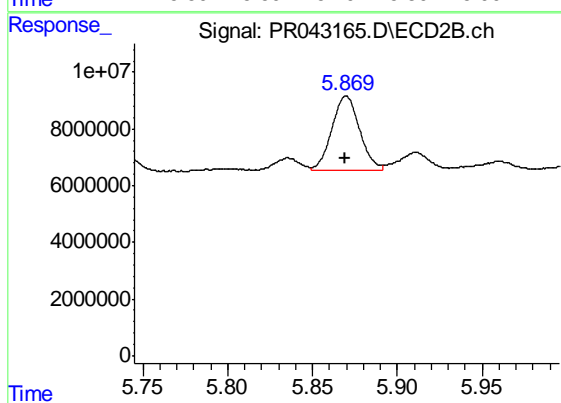
#19 AR-1242-4

R.T.: 5.343 min  
 Delta R.T.: 0.000 min  
 Response: 41666311  
 Conc: 234.28 ng/ml



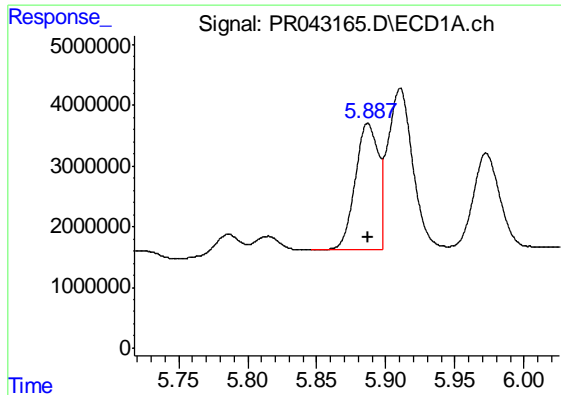
#20 AR-1242-5

R.T.: 6.745 min  
 Delta R.T.: -0.066 min  
 Response: 6688167  
 Conc: 73.73 ng/ml



#20 AR-1242-5

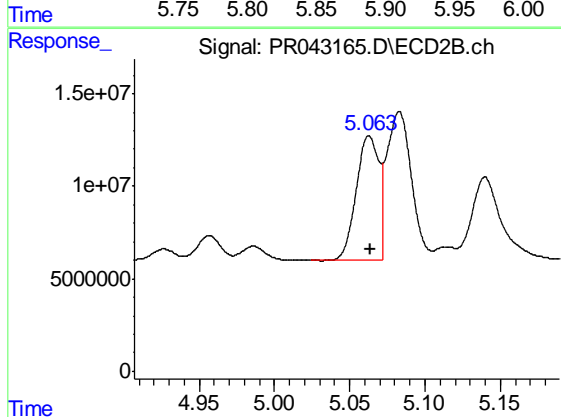
R.T.: 5.870 min  
 Delta R.T.: 0.000 min  
 Response: 29906084  
 Conc: 115.50 ng/ml



#21 AR-1248-1

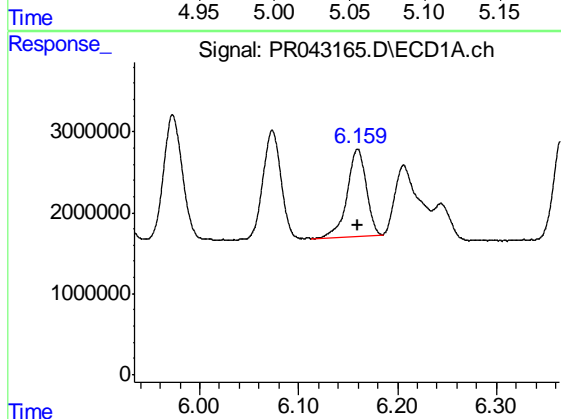
R.T.: 5.887 min  
 Delta R.T.: 0.000 min  
 Response: 23890420  
 Conc: 337.76 ng/ml

Instrument :  
 ECD\_R  
 ClientSampleId :  
 PB124873BS



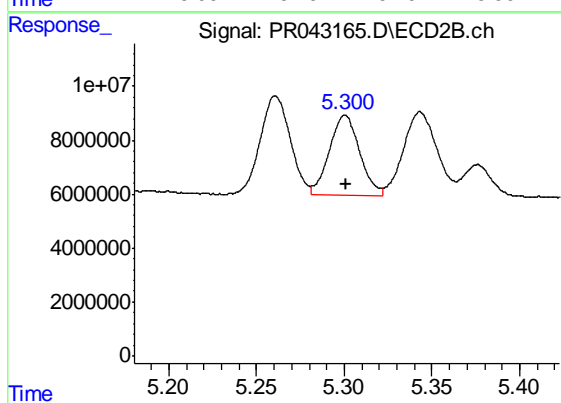
#21 AR-1248-1

R.T.: 5.063 min  
 Delta R.T.: 0.000 min  
 Response: 69653257  
 Conc: 330.91 ng/ml



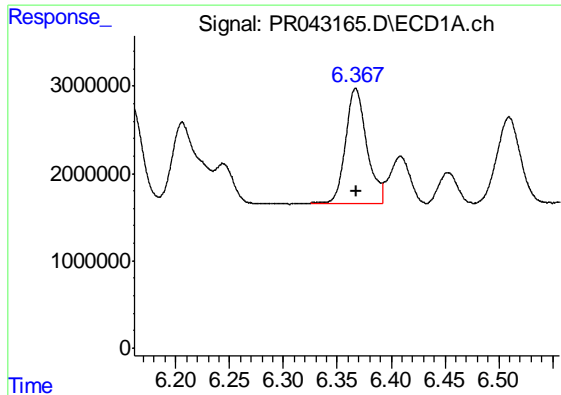
#22 AR-1248-2

R.T.: 6.160 min  
 Delta R.T.: 0.000 min  
 Response: 14400174  
 Conc: 141.53 ng/ml



#22 AR-1248-2

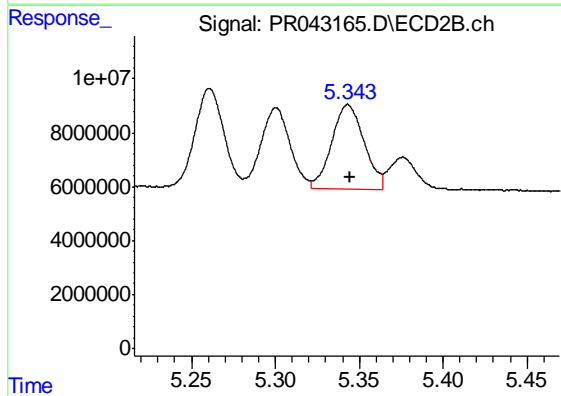
R.T.: 5.300 min  
 Delta R.T.: 0.000 min  
 Response: 35710507  
 Conc: 155.28 ng/ml



#23 AR-1248-3

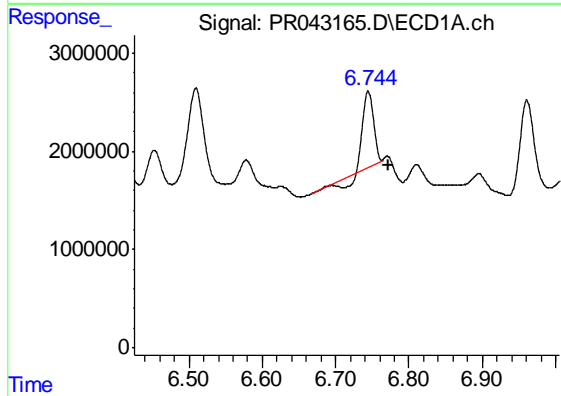
R.T.: 6.367 min  
 Delta R.T.: 0.000 min  
 Response: 17907939  
 Conc: 154.30 ng/ml

Instrument :  
 ECD\_R  
 ClientSampleId :  
 PB124873BS



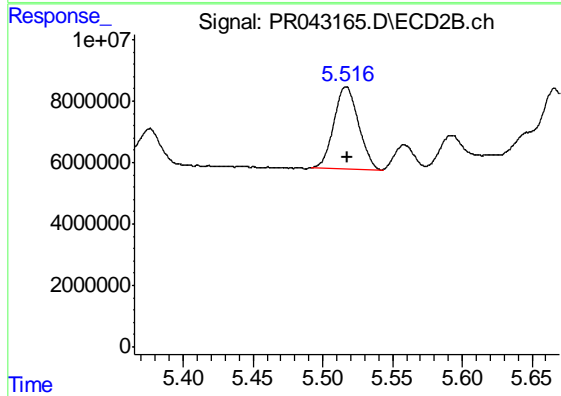
#23 AR-1248-3

R.T.: 5.343 min  
 Delta R.T.: 0.000 min  
 Response: 41666311  
 Conc: 182.36 ng/ml



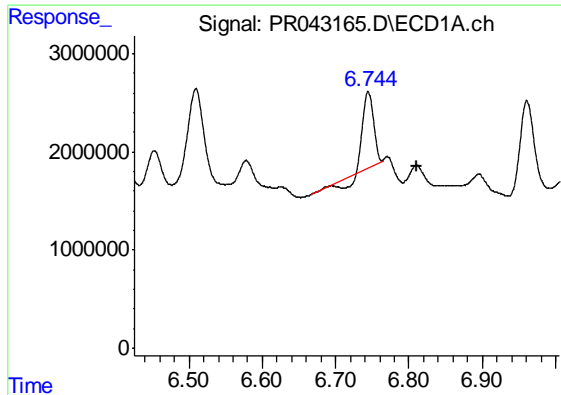
#24 AR-1248-4

R.T.: 6.745 min  
 Delta R.T.: -0.027 min  
 Response: 6688167  
 Conc: 46.37 ng/ml



#24 AR-1248-4

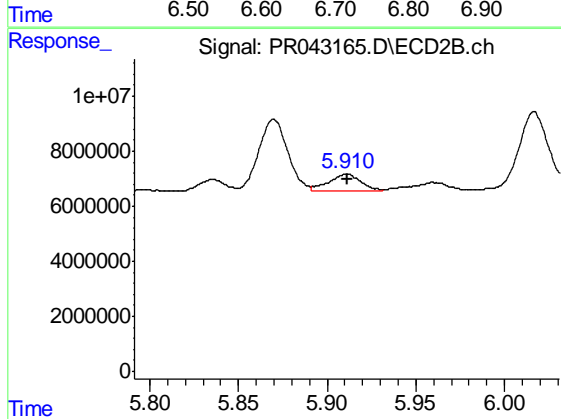
R.T.: 5.517 min  
 Delta R.T.: 0.000 min  
 Response: 32863846  
 Conc: 161.90 ng/ml



#25 AR-1248-5

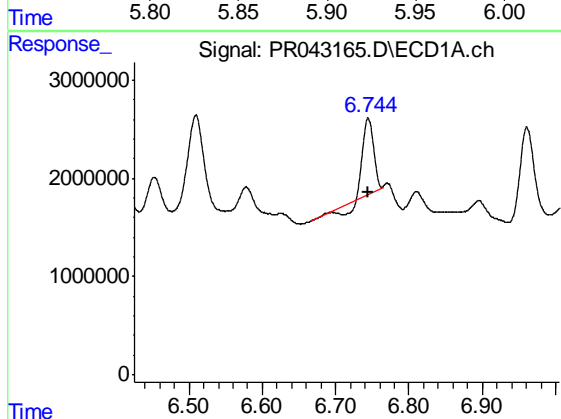
R.T.: 6.745 min  
 Delta R.T.: -0.067 min  
 Response: 6688167  
 Conc: 49.13 ng/ml

Instrument :  
 ECD\_R  
 ClientSampleId :  
 PB124873BS



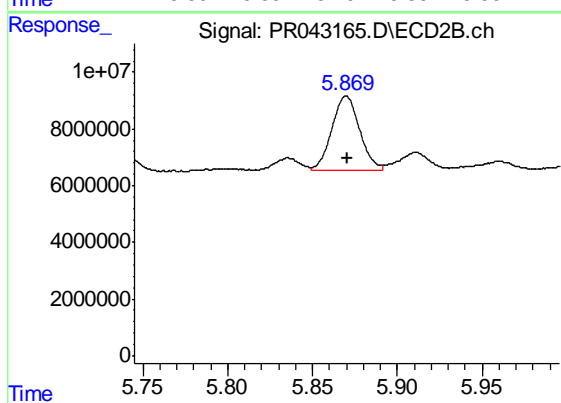
#25 AR-1248-5

R.T.: 5.911 min  
 Delta R.T.: 0.000 min  
 Response: 7631376  
 Conc: 24.12 ng/ml



#26 AR-1254-1

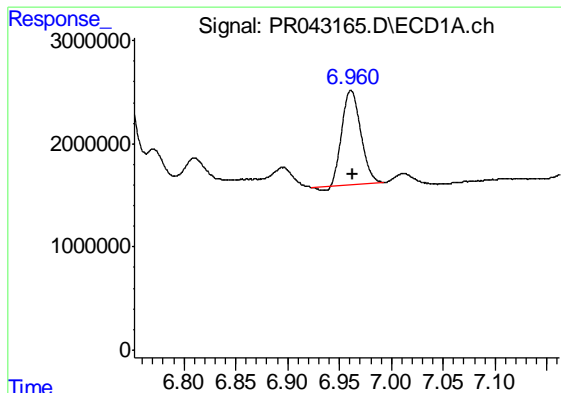
R.T.: 6.745 min  
 Delta R.T.: 0.000 min  
 Response: 6688167  
 Conc: 47.52 ng/ml



#26 AR-1254-1

R.T.: 5.870 min  
 Delta R.T.: 0.000 min  
 Response: 29906084  
 Conc: 65.94 ng/ml

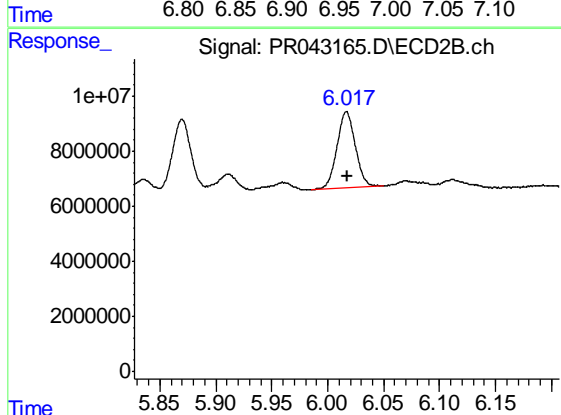




#27 AR-1254-2

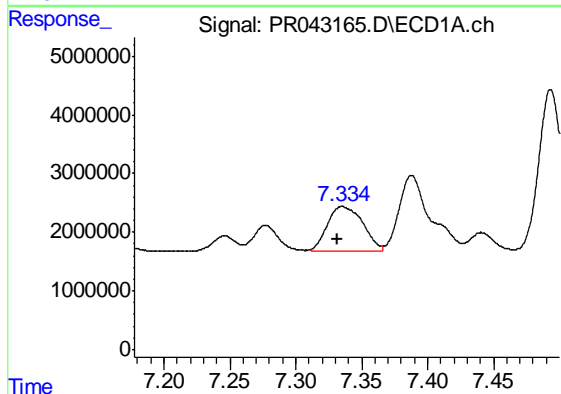
R.T.: 6.961 min  
 Delta R.T.: -0.001 min  
 Response: 11464998  
 Conc: 53.85 ng/ml

Instrument :  
 ECD\_R  
 ClientSampleId :  
 PB124873BS



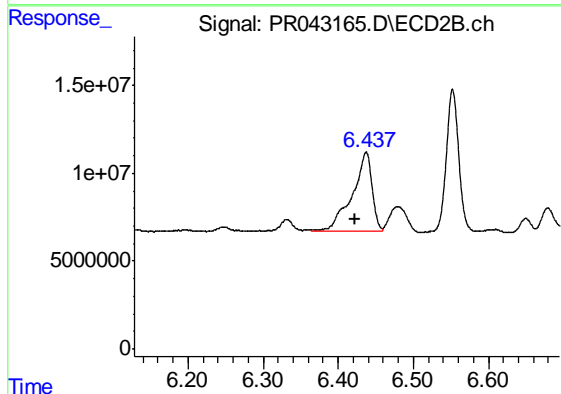
#27 AR-1254-2

R.T.: 6.017 min  
 Delta R.T.: 0.000 min  
 Response: 31670230  
 Conc: 72.32 ng/ml



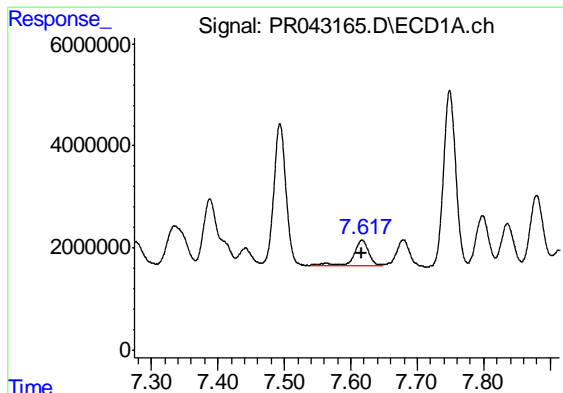
#28 AR-1254-3

R.T.: 7.335 min  
 Delta R.T.: 0.003 min  
 Response: 13909078  
 Conc: 53.20 ng/ml



#28 AR-1254-3

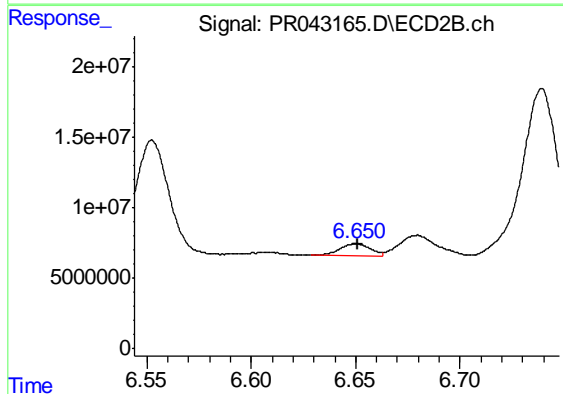
R.T.: 6.437 min  
 Delta R.T.: 0.014 min  
 Response: 82441047  
 Conc: 105.35 ng/ml



#29 AR-1254-4

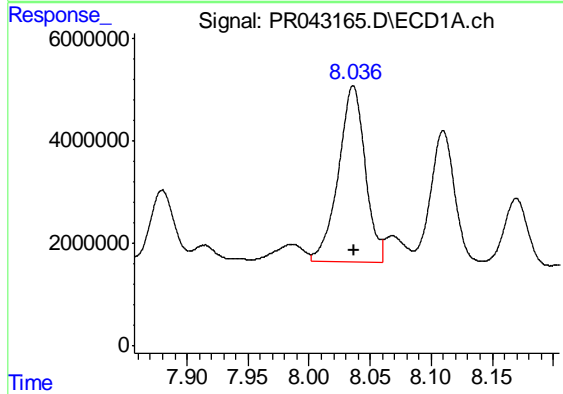
R.T.: 7.617 min  
 Delta R.T.: 0.000 min  
 Response: 7952592  
 Conc: 38.92 ng/ml

Instrument :  
 ECD\_R  
 ClientSampleId :  
 PB124873BS



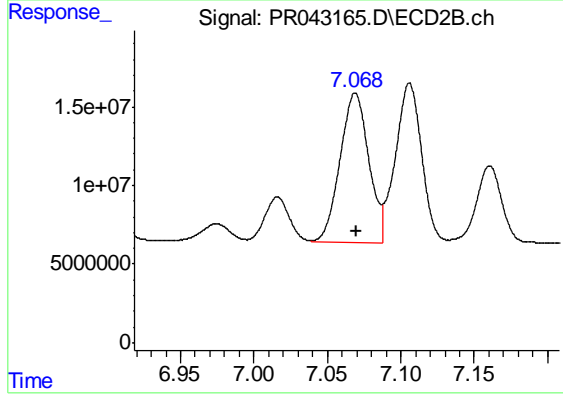
#29 AR-1254-4

R.T.: 6.650 min  
 Delta R.T.: -0.001 min  
 Response: 8576427  
 Conc: 14.46 ng/ml



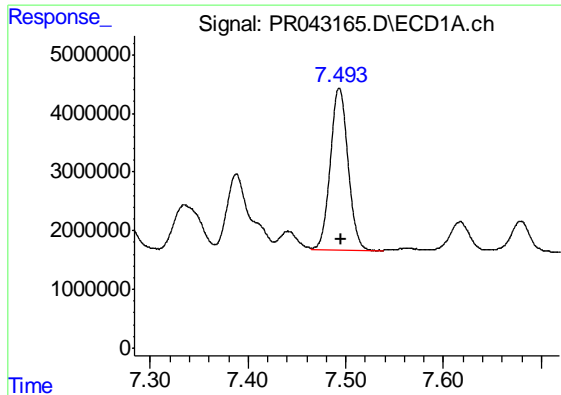
#30 AR-1254-5

R.T.: 8.036 min  
 Delta R.T.: -0.001 min  
 Response: 52318416  
 Conc: 236.65 ng/ml



#30 AR-1254-5

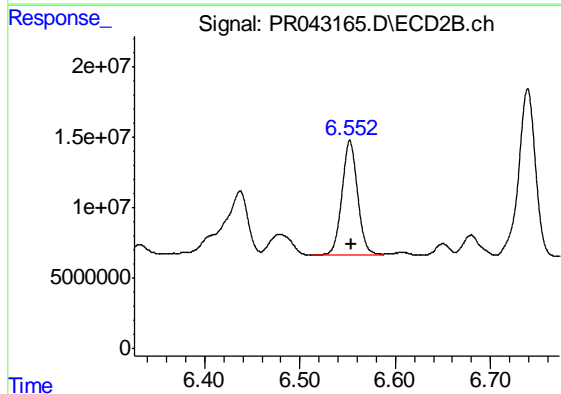
R.T.: 7.069 min  
 Delta R.T.: -0.001 min  
 Response: 129441365  
 Conc: 170.37 ng/ml



#31 AR-1260-1

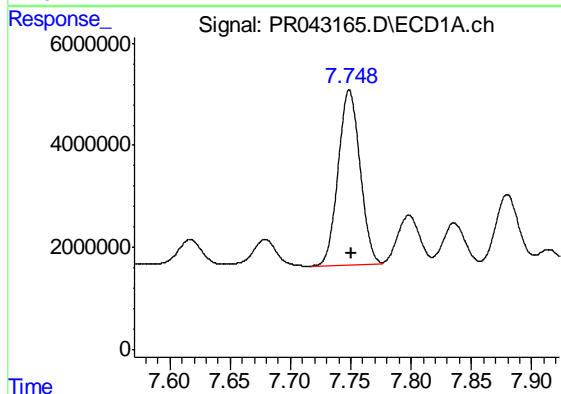
R.T.: 7.493 min  
Delta R.T.: -0.002 min  
Response: 34821905  
Conc: 191.38 ng/ml

Instrument :  
ECD\_R  
ClientSampleId :  
PB124873BS



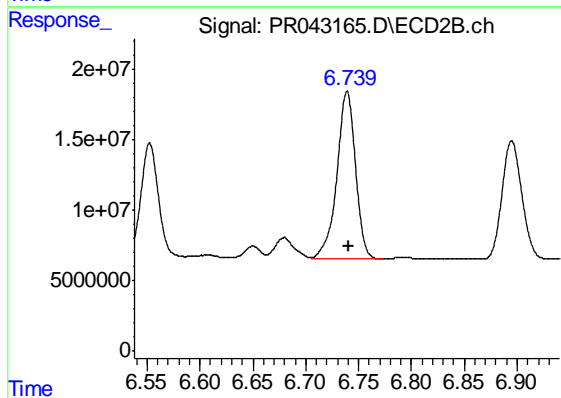
#31 AR-1260-1

R.T.: 6.553 min  
Delta R.T.: -0.002 min  
Response: 94473901  
Conc: 184.42 ng/ml



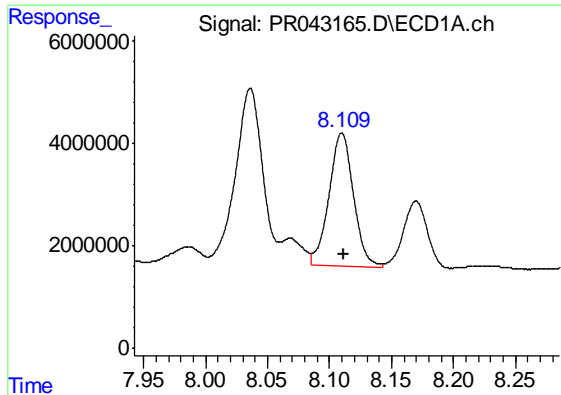
#32 AR-1260-2

R.T.: 7.749 min  
Delta R.T.: -0.002 min  
Response: 43324822  
Conc: 181.65 ng/ml



#32 AR-1260-2

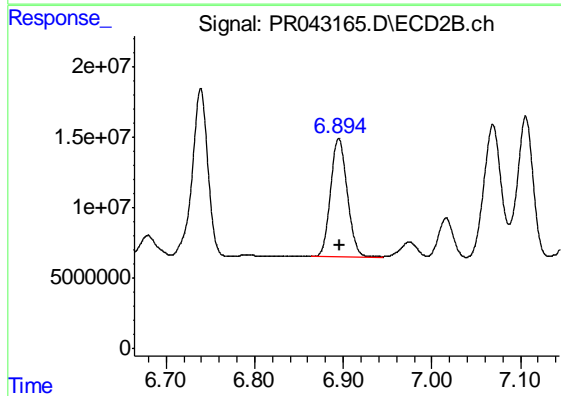
R.T.: 6.739 min  
Delta R.T.: -0.002 min  
Response: 145548850  
Conc: 204.39 ng/ml



#33 AR-1260-3

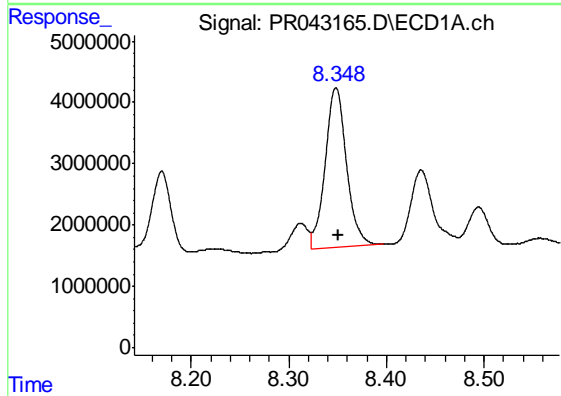
R.T.: 8.110 min  
 Delta R.T.: -0.002 min  
 Response: 35820599  
 Conc: 190.99 ng/ml

Instrument :  
 ECD\_R  
 ClientSampleId :  
 PB124873BS



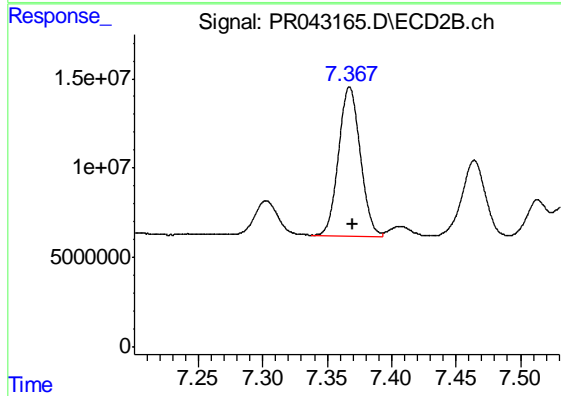
#33 AR-1260-3

R.T.: 6.895 min  
 Delta R.T.: -0.001 min  
 Response: 110799735  
 Conc: 188.07 ng/ml



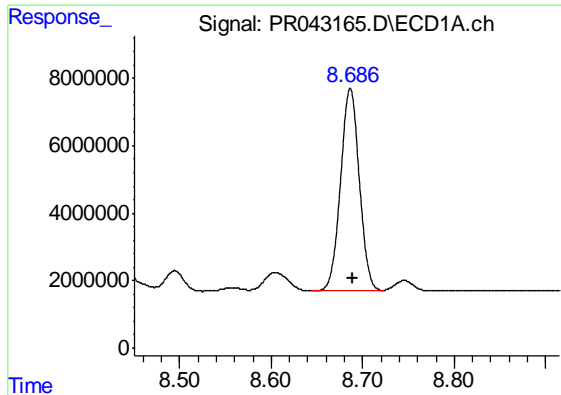
#34 AR-1260-4

R.T.: 8.348 min  
 Delta R.T.: -0.002 min  
 Response: 39618722  
 Conc: 191.89 ng/ml



#34 AR-1260-4

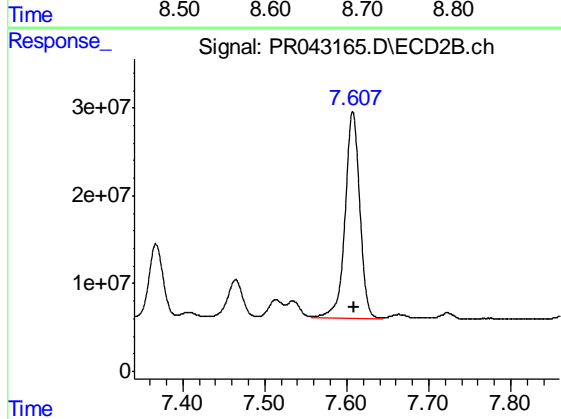
R.T.: 7.367 min  
 Delta R.T.: -0.002 min  
 Response: 97919279  
 Conc: 194.10 ng/ml



#35 AR-1260-5

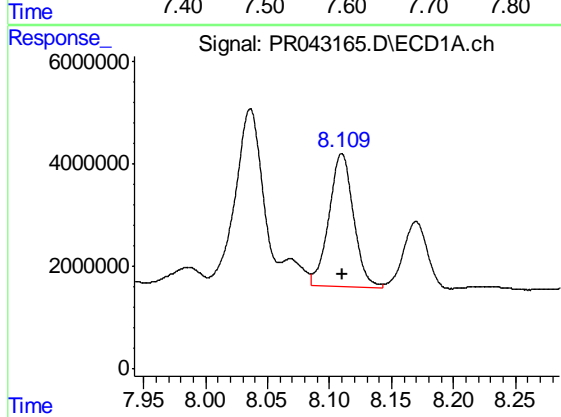
R.T.: 8.687 min  
Delta R.T.: -0.002 min  
Response: 85041576  
Conc: 197.15 ng/ml

Instrument :  
ECD\_R  
ClientSampleId :  
PB124873BS



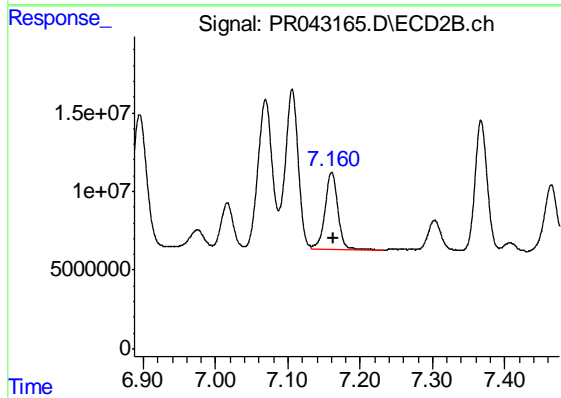
#35 AR-1260-5

R.T.: 7.607 min  
Delta R.T.: -0.002 min  
Response: 293691476  
Conc: 205.03 ng/ml



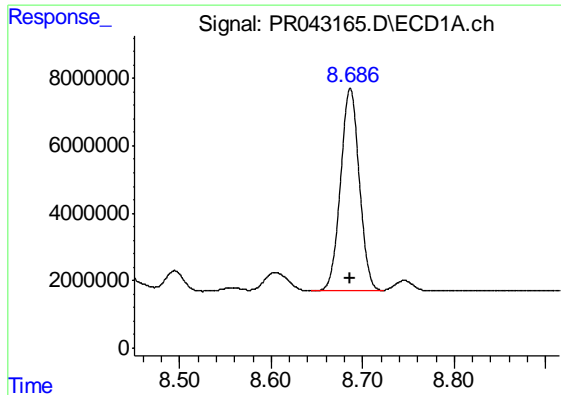
#36 AR-1262-1

R.T.: 8.110 min  
Delta R.T.: 0.000 min  
Response: 35820599  
Conc: 127.65 ng/ml



#36 AR-1262-1

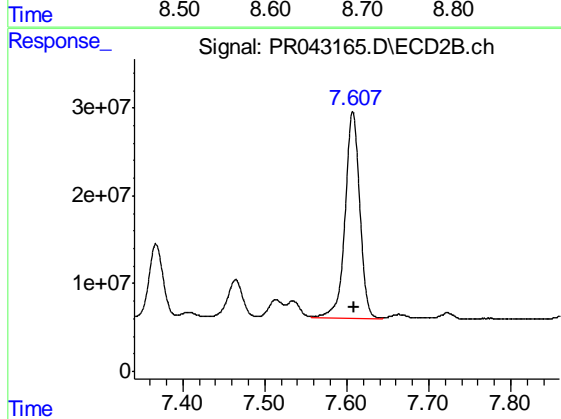
R.T.: 7.161 min  
Delta R.T.: -0.002 min  
Response: 61483711  
Conc: 165.87 ng/ml



#37 AR-1262-2

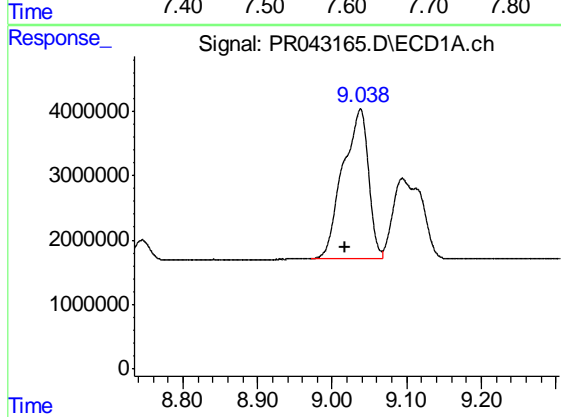
R.T.: 8.687 min  
 Delta R.T.: 0.000 min  
 Response: 85041576  
 Conc: 161.32 ng/ml

Instrument :  
 ECD\_R  
 ClientSampleId :  
 PB124873BS



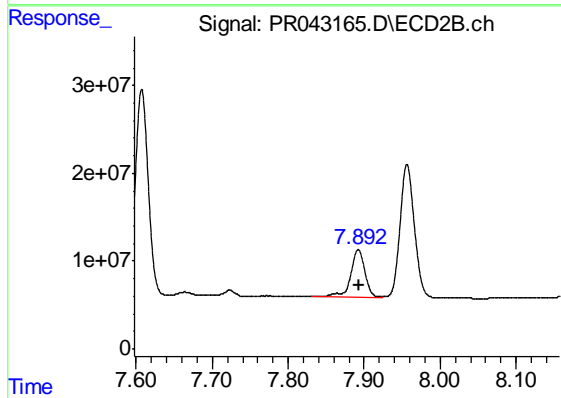
#37 AR-1262-2

R.T.: 7.607 min  
 Delta R.T.: -0.002 min  
 Response: 293691476  
 Conc: 163.76 ng/ml



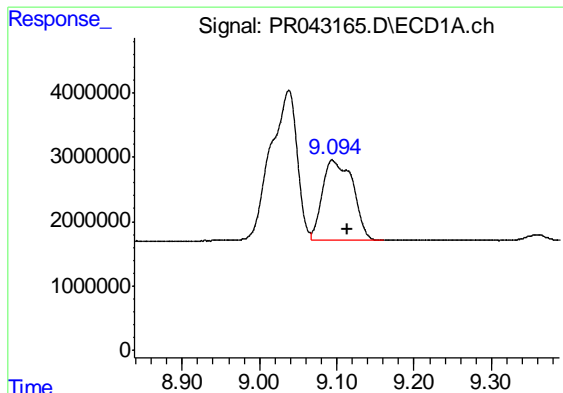
#38 AR-1262-3

R.T.: 9.038 min  
 Delta R.T.: 0.022 min  
 Response: 55544278  
 Conc: 165.48 ng/ml



#38 AR-1262-3

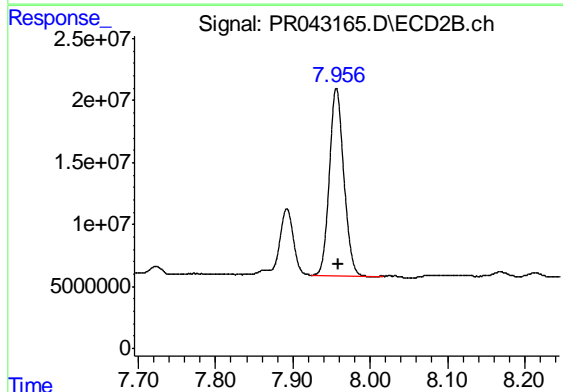
R.T.: 7.892 min  
 Delta R.T.: -0.002 min  
 Response: 69429998  
 Conc: 102.65 ng/ml



#39 AR-1262-4

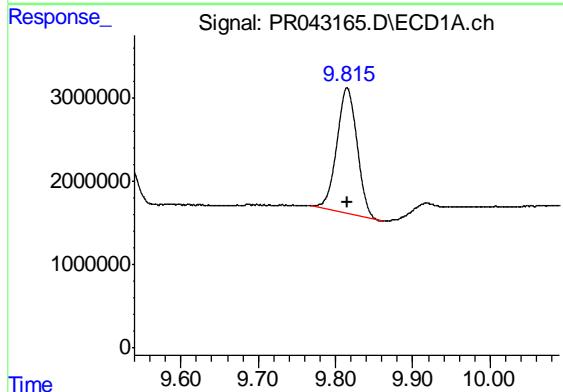
R.T.: 9.094 min  
 Delta R.T.: -0.020 min  
 Response: 34185126  
 Conc: 264.34 ng/ml

Instrument :  
 ECD\_R  
 ClientSampleId :  
 PB124873BS



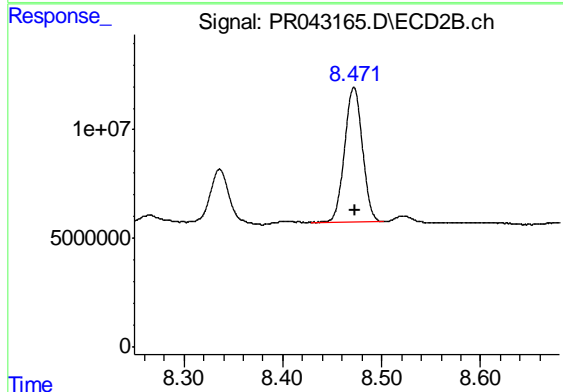
#39 AR-1262-4

R.T.: 7.957 min  
 Delta R.T.: -0.002 min  
 Response: 195651855  
 Conc: 165.20 ng/ml



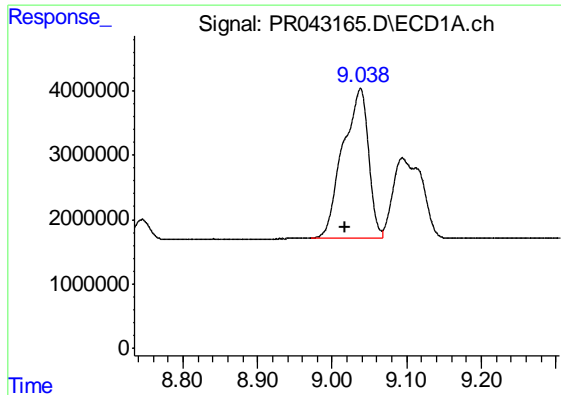
#40 AR-1262-5

R.T.: 9.815 min  
 Delta R.T.: -0.001 min  
 Response: 27669252  
 Conc: 169.72 ng/ml



#40 AR-1262-5

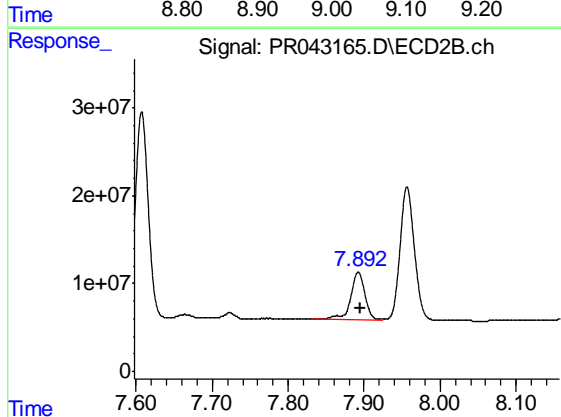
R.T.: 8.472 min  
 Delta R.T.: -0.002 min  
 Response: 77937577  
 Conc: 152.47 ng/ml



#41 AR-1268-1

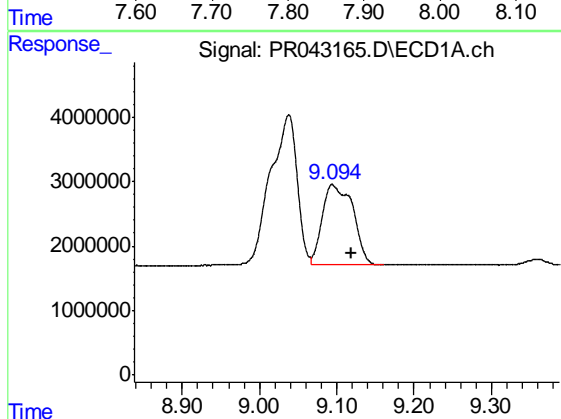
R.T.: 9.038 min  
 Delta R.T.: 0.021 min  
 Response: 55544278  
 Conc: 91.56 ng/ml

Instrument :  
 ECD\_R  
 ClientSampleId :  
 PB124873BS



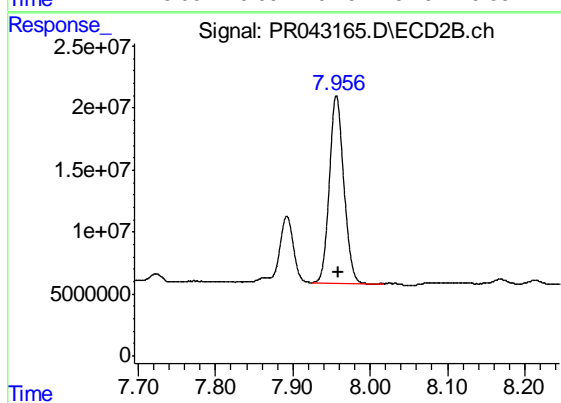
#41 AR-1268-1

R.T.: 7.892 min  
 Delta R.T.: -0.002 min  
 Response: 69429998  
 Conc: 33.82 ng/ml



#42 AR-1268-2

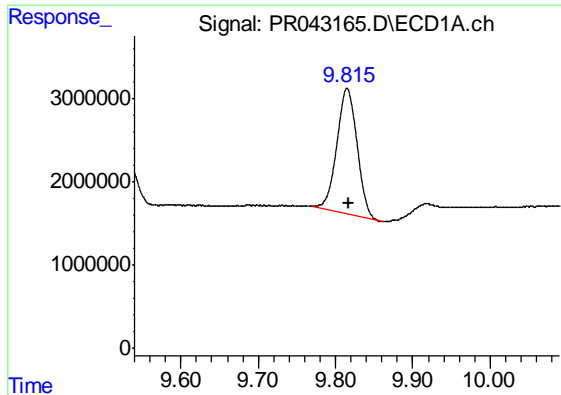
R.T.: 9.094 min  
 Delta R.T.: -0.024 min  
 Response: 34185126  
 Conc: 62.35 ng/ml



#42 AR-1268-2

R.T.: 7.957 min  
 Delta R.T.: -0.003 min  
 Response: 195651855  
 Conc: 109.63 ng/ml

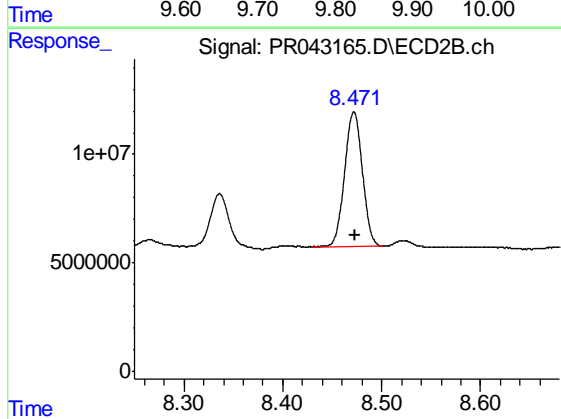




#44 AR-1268-4

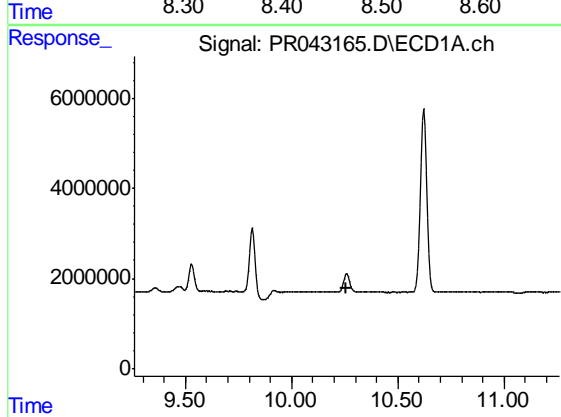
R.T.: 9.815 min  
 Delta R.T.: -0.003 min  
 Response: 27669252  
 Conc: 149.48 ng/ml

Instrument :  
 ECD\_R  
 ClientSampleId :  
 PB124873BS



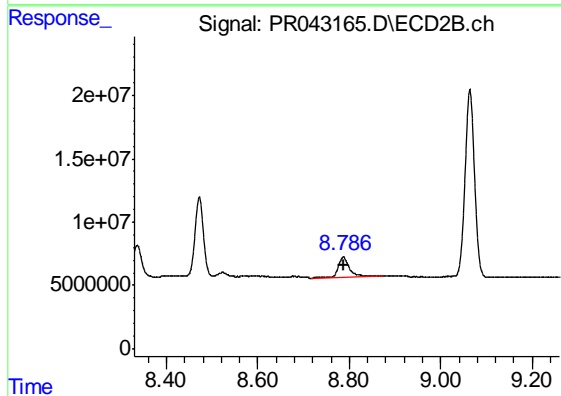
#44 AR-1268-4

R.T.: 8.472 min  
 Delta R.T.: -0.001 min  
 Response: 77937577  
 Conc: 135.93 ng/ml



#45 AR-1268-5

R.T.: 0.000 min  
 Exp R.T. : 10.261 min  
 Response: 0  
 Conc: N.D.



#45 AR-1268-5

R.T.: 8.787 min  
 Delta R.T.: -0.002 min  
 Response: 27430778  
 Conc: 6.74 ng/ml