

Data Path : Z:\pestpcbsrv\HPCHEM1\ECD_R\Data\PR111719\
 Data File : PR043208.D
 Signal(s) : Signal #1: ECD1A.ch Signal #2: ECD2B.ch
 Acq On : 18 Nov 2019 00:17
 Operator : SM\AJ
 Sample : K5865-14
 Misc :
 ALS Vial : 43 Sample Multiplier: 1

Instrument :
 ECD_R
 ClientSampleId :
 3-(14-16)

Integration File signal 1: autoint1.e
 Integration File signal 2: autoint2.e
 Quant Time: Nov 19 06:21:46 2019
 Quant Method : Z:\pestpcbsrv\HPCHEM1\ECD_R\Method\PR111519.M
 Quant Title : GC EXTRACTABLES
 QLast Update : Tue Nov 19 05:29:57 2019
 Response via : Initial Calibration
 Integrator: ChemStation

Volume Inj. : 2 µl
 Signal #1 Phase : ZB-MR1 Signal #2 Phase: ZB-MR2
 Signal #1 Info : 30Mx0.32mmx 0.50µ Signal #2 Info : 30M x 0.32mm x 0.25µm

Compound	RT#1	RT#2	Resp#1	Resp#2	ng/ml	ng/ml
----------	------	------	--------	--------	-------	-------

System Monitoring Compounds

1) SA Tetrachlo...	4.710	3.970	73739052	251.0E6	24.898	26.413
2) SA Decachlor...	10.618	9.061	72073937	167.6E6	20.611	19.713

Target Compounds

3) L1 AR-1016-1	5.885	5.061	6266241	19051568	48.851	51.089
4) L1 AR-1016-2	5.909	5.082	9467389	25259607	52.287	49.255
5) L1 AR-1016-3	5.909	5.260	9467389	18618998	84.661	81.425
6) L1 AR-1016-4	6.048	5.299	4369040	83590316	47.106	453.111 #
7) L1 AR-1016-5	6.365	5.515	34878989	38825634	374.543	234.334 #
8) L2 AR-1221-1	0.000	4.139	0	19475701	N.D.	162.207 #
9) L2 AR-1221-2	0.000	4.273	0	5216492	N.D.	57.051 #
10) L2 AR-1221-3	0.000	4.343	0	11156406	N.D.	39.571 #
11) L3 AR-1232-1	0.000	4.343	0	11156406	N.D.	27.368 #
12) L3 AR-1232-2	0.000	5.082	0	25259607	N.D.	61.682 #
13) L3 AR-1232-3	5.909	5.260	9467389	18618998	65.152	99.796 #
14) L3 AR-1232-4	6.048	5.342	4369040	23711892	58.754	153.750 #
15) L3 AR-1232-5	6.158	5.515	31915793	38825634	558.486	324.811 #
16) L4 AR-1242-1	5.885	5.061	6266241	19051568	60.710	63.670
17) L4 AR-1242-2	5.909	5.082	9467389	25259607	64.295	61.544
18) L4 AR-1242-3	5.909	5.260	9467389	18618998	104.862	96.053
19) L4 AR-1242-4	6.048	5.342	4369040	23711892	58.421	133.325 #
20) L4 AR-1242-5	6.811	5.869	27853264	249.6E6	307.038	963.935 #
21) L5 AR-1248-1	5.885	5.061	6266241	19051568	88.591	90.510
22) L5 AR-1248-2	6.158	5.299	31915793	83590316	313.681	363.485
23) L5 AR-1248-3	6.365	5.342	34878989	23711892	300.531	103.779 #
24) L5 AR-1248-4	6.766	5.515	39205709	38825634	271.805	191.270 #
25) L5 AR-1248-5	6.811	5.911	27853264	22504677	204.612	71.115 #
26) L6 AR-1254-1	6.743	5.869	83319859	249.6E6	592.014	550.296
27) L6 AR-1254-2	6.959	6.015	138.9E6	218.2E6	652.271	498.315
28) L6 AR-1254-3	7.330	6.421	152.1E6	406.6E6	581.969	519.526
29) L6 AR-1254-4	7.614	6.649	126.5E6	317.0E6	619.296	534.257
30) L6 AR-1254-5	8.034	7.067	154.8E6	461.2E6	700.384	607.077
31) L7 AR-1260-1	7.491	6.552	64720638	176.9E6	355.700	345.406
32) L7 AR-1260-2	7.746	6.738	89694200	224.4E6	376.068	315.187
33) L7 AR-1260-3	8.102	6.892	21853996	168.2E6	116.523	285.457 #
34) L7 AR-1260-4	8.337	7.366	63784521	33040488	308.930	65.493 #
35) L7 AR-1260-5	8.683	7.605	39264431	98810028	91.027	68.980
36) L8 AR-1262-1	8.102	7.158	21853996	21664363	77.876	58.447
37) L8 AR-1262-2	8.683	7.605	39264431	98810028	74.484	55.096 #
38) L8 AR-1262-3	9.035	7.889	26088615	14006285	77.722	20.707 #
39) L8 AR-1262-4	9.090	7.953	5286351	79249426	40.877	66.916 #
40) L8 AR-1262-5	0.000	8.469	0	16340707	N.D.	31.967 #
41) L9 AR-1268-1	9.035	7.889	26088615	14006285	43.003	6.822 #
42) L9 AR-1268-2	9.090	7.953	5286351	79249426	9.642	44.405 #

Data Path : Z:\pestpcbsrv\HPCHEM1\ECD_R\Data\PR111719\
 Data File : PR043208.D
 Signal(s) : Signal #1: ECD1A.ch Signal #2: ECD2B.ch
 Acq On : 18 Nov 2019 00:17
 Operator : SM\AJ
 Sample : K5865-14
 Misc :
 ALS Vial : 43 Sample Multiplier: 1

Instrument :
 ECD_R
 ClientSampleId :
 3-(14-16)

Integration File signal 1: autoint1.e
 Integration File signal 2: autoint2.e
 Quant Time: Nov 19 06:21:46 2019
 Quant Method : Z:\pestpcbsrv\HPCHEM1\ECD_R\Method\PR111519.M
 Quant Title : GC EXTRACTABLES
 QLast Update : Tue Nov 19 05:29:57 2019
 Response via : Initial Calibration
 Integrator: ChemStation

Volume Inj. : 2 µl
 Signal #1 Phase : ZB-MR1 Signal #2 Phase: ZB-MR2
 Signal #1 Info : 30Mx0.32mmx 0.50µ Signal #2 Info : 30M x 0.32mm x 0.25µm

	Compound	RT#1	RT#2	Resp#1	Resp#2	ng/ml	ng/ml
44)	L9 AR-1268-4	0.000	8.469	0	16340707	N.D.	28.501 #
45)	L9 AR-1268-5	0.000	8.783	0	7873434	N.D.	1.935 #

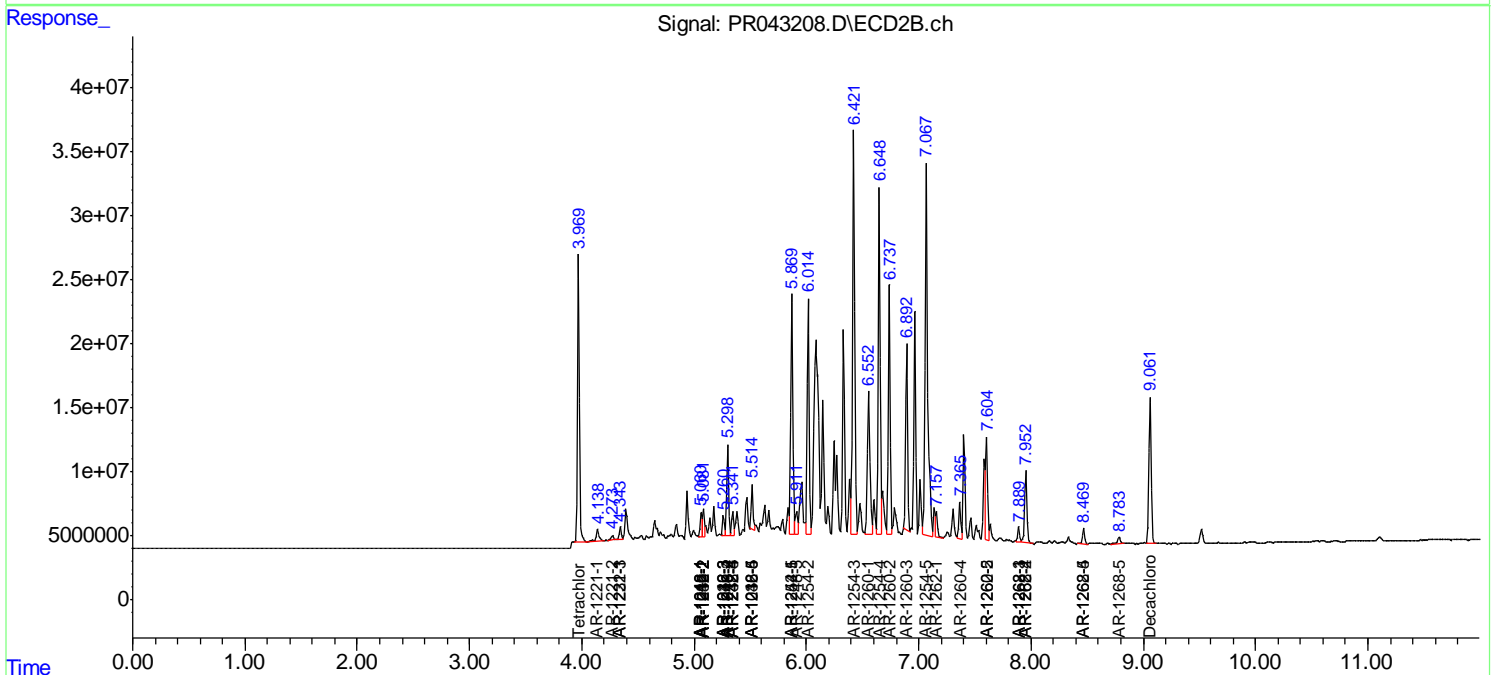
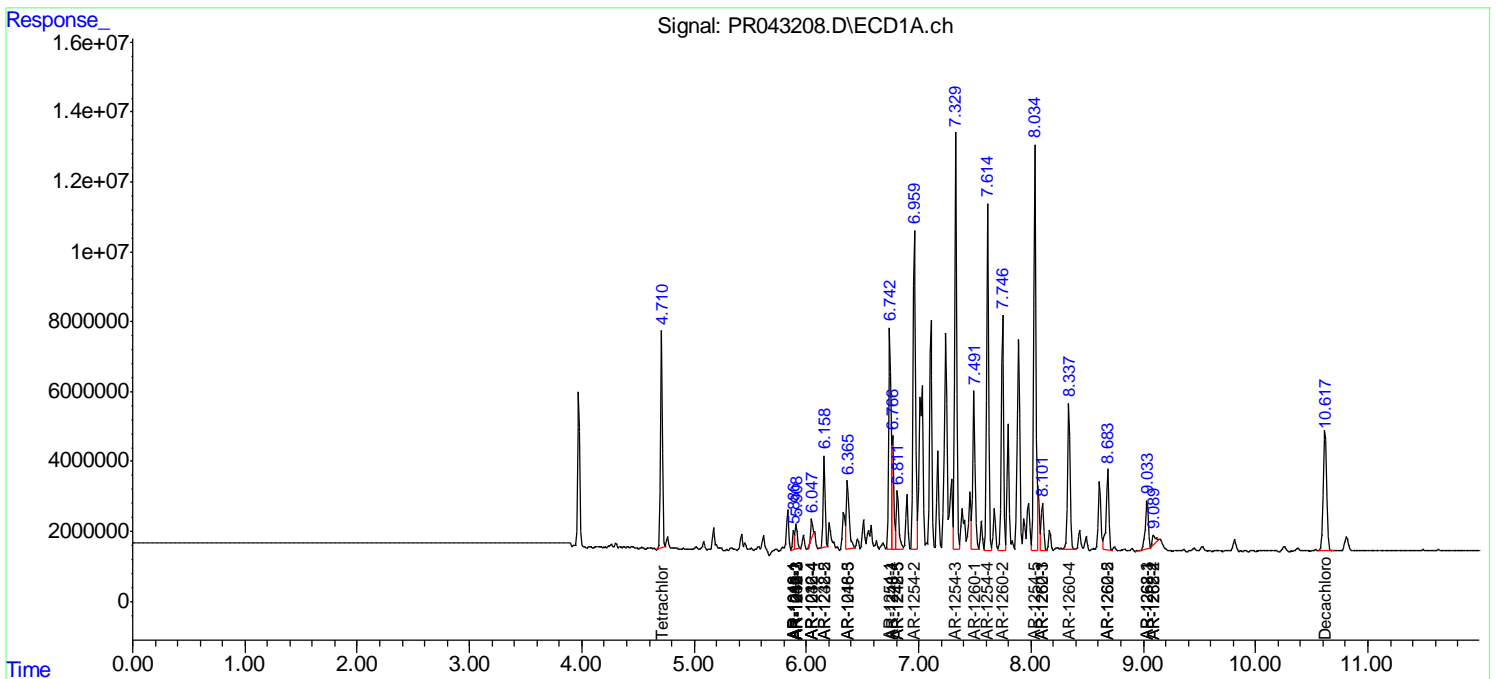
(f)=RT Delta > 1/2 Window (#)=Amounts differ by > 25% (m)=manual int.

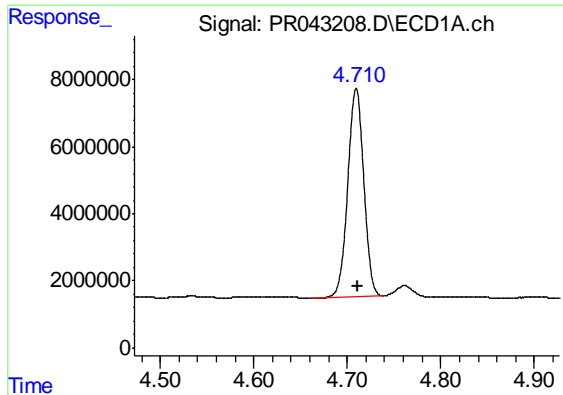
Data Path : Z:\pestpcbsrv\HPCHEM1\ECD_R\Data\PR111719\
 Data File : PR043208.D
 Signal(s) : Signal #1: ECD1A.ch Signal #2: ECD2B.ch
 Acq On : 18 Nov 2019 00:17
 Operator : SM\AJ
 Sample : K5865-14
 Misc :
 ALS Vial : 43 Sample Multiplier: 1

Instrument :
 ECD_R
 ClientSampled :
 3-(14-16)

Integration File signal 1: autoint1.e
 Integration File signal 2: autoint2.e
 Quant Time: Nov 19 06:21:46 2019
 Quant Method : Z:\pestpcbsrv\HPCHEM1\ECD_R\Method\PR111519.M
 Quant Title : GC EXTRACTABLES
 QLast Update : Tue Nov 19 05:29:57 2019
 Response via : Initial Calibration
 Integrator: ChemStation

Volume Inj. : 2 µl
 Signal #1 Phase : ZB-MR1 Signal #2 Phase: ZB-MR2
 Signal #1 Info : 30Mx0.32mmx 0.50µ Signal #2 Info : 30M x 0.32mm x 0.25µm

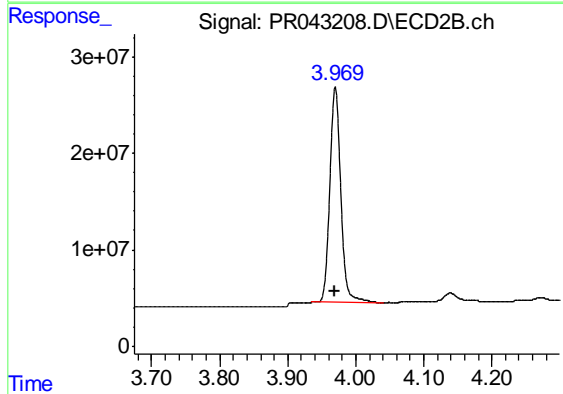




#1 Tetrachloro-m-xylene

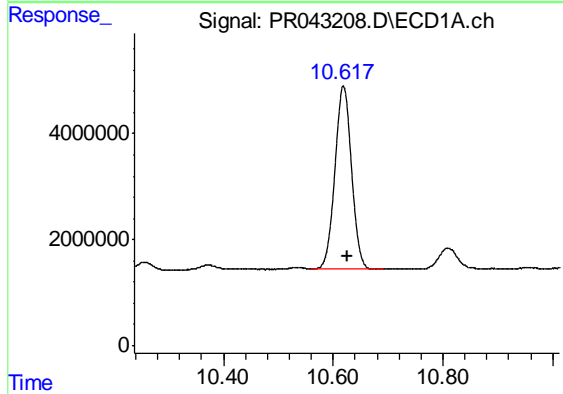
R.T.: 4.710 min
 Delta R.T.: -0.001 min
 Response: 73739052
 Conc: 24.90 ng/ml

Instrument :
 ECD_R
 ClientSampleId :
 3-(14-16)



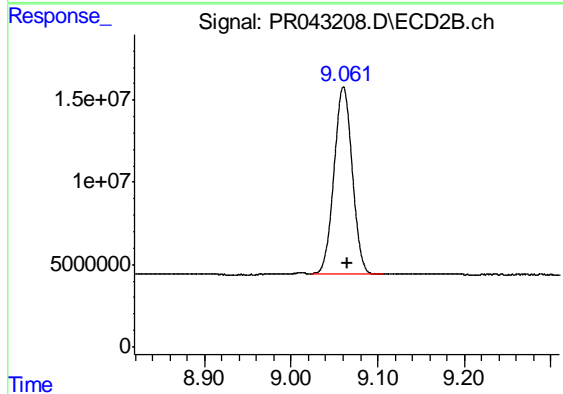
#1 Tetrachloro-m-xylene

R.T.: 3.970 min
 Delta R.T.: 0.000 min
 Response: 251045481
 Conc: 26.41 ng/ml



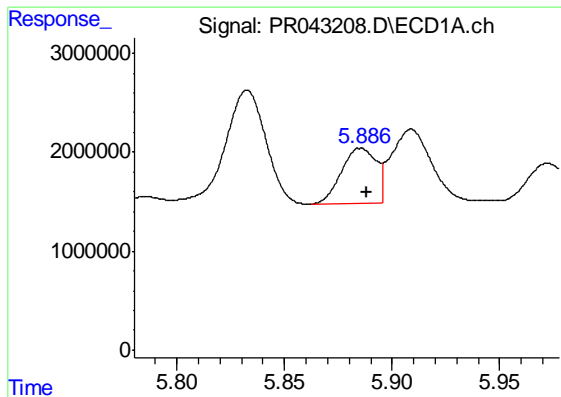
#2 Decachlorobiphenyl

R.T.: 10.618 min
 Delta R.T.: -0.007 min
 Response: 72073937
 Conc: 20.61 ng/ml



#2 Decachlorobiphenyl

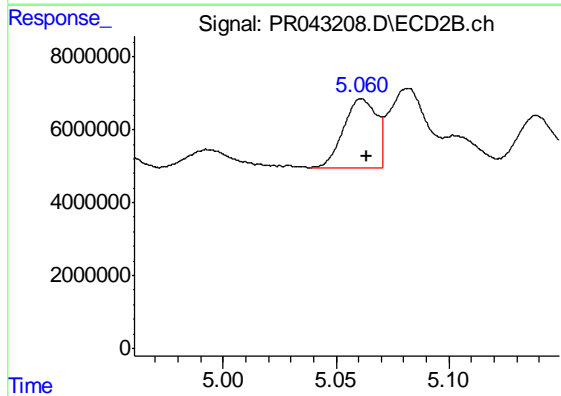
R.T.: 9.061 min
 Delta R.T.: -0.005 min
 Response: 167558833
 Conc: 19.71 ng/ml



#3 AR-1016-1

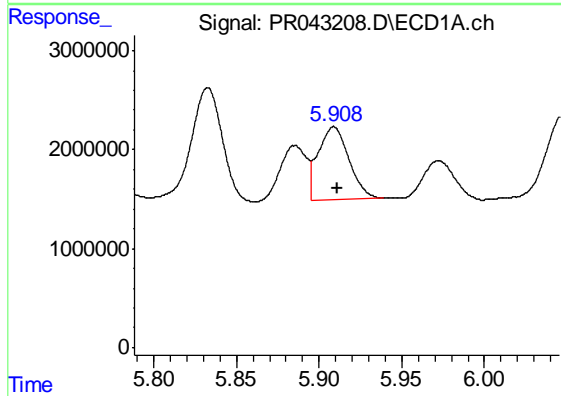
R.T.: 5.885 min
 Delta R.T.: -0.003 min
 Response: 6266241
 Conc: 48.85 ng/ml

Instrument :
 ECD_R
 ClientSampleId :
 3-(14-16)



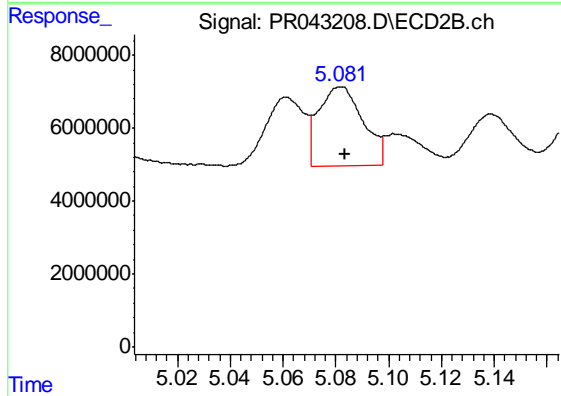
#3 AR-1016-1

R.T.: 5.061 min
 Delta R.T.: -0.002 min
 Response: 19051568
 Conc: 51.09 ng/ml



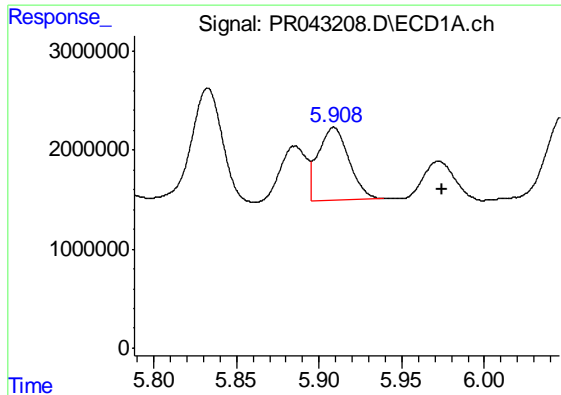
#4 AR-1016-2

R.T.: 5.909 min
 Delta R.T.: -0.002 min
 Response: 9467389
 Conc: 52.29 ng/ml



#4 AR-1016-2

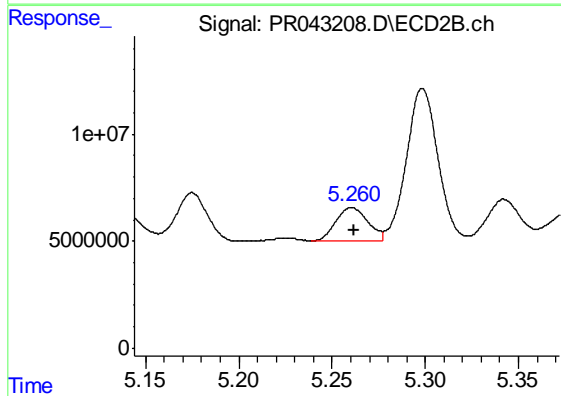
R.T.: 5.082 min
 Delta R.T.: -0.002 min
 Response: 25259607
 Conc: 49.26 ng/ml



#5 AR-1016-3

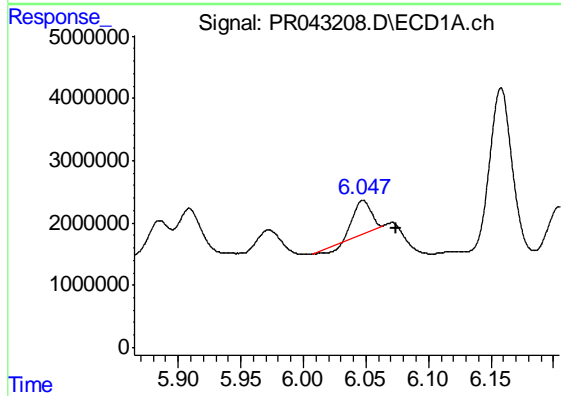
R.T.: 5.909 min
 Delta R.T.: -0.065 min
 Response: 9467389
 Conc: 84.66 ng/ml

Instrument :
 ECD_R
 ClientSampleId :
 3-(14-16)



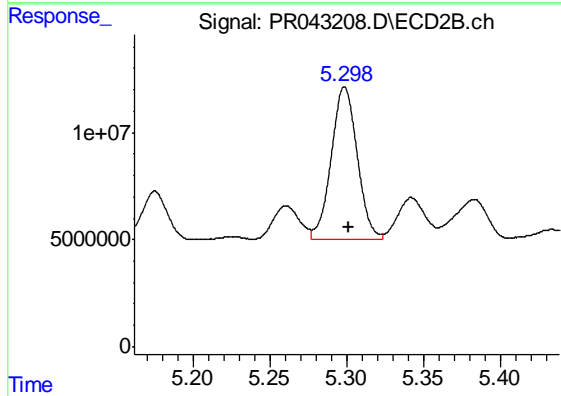
#5 AR-1016-3

R.T.: 5.260 min
 Delta R.T.: -0.001 min
 Response: 18618998
 Conc: 81.43 ng/ml



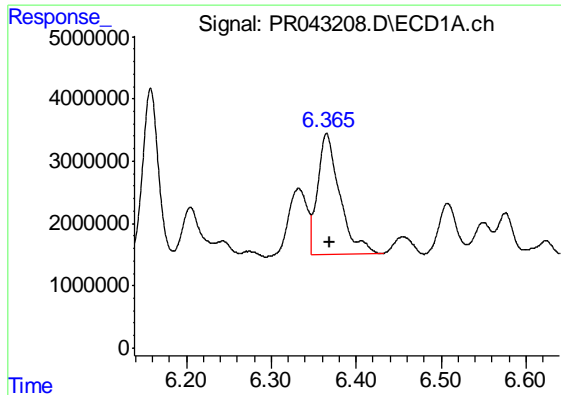
#6 AR-1016-4

R.T.: 6.048 min
 Delta R.T.: -0.026 min
 Response: 4369040
 Conc: 47.11 ng/ml



#6 AR-1016-4

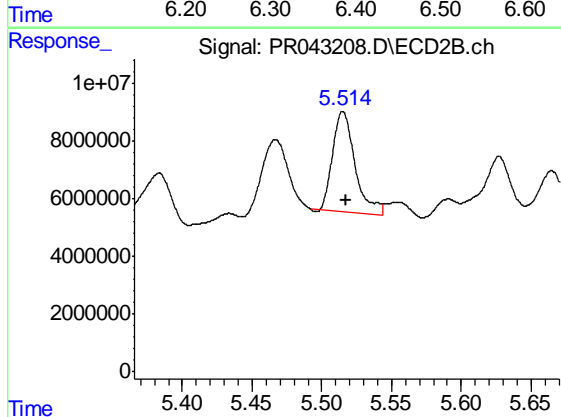
R.T.: 5.299 min
 Delta R.T.: -0.003 min
 Response: 83590316
 Conc: 453.11 ng/ml



#7 AR-1016-5

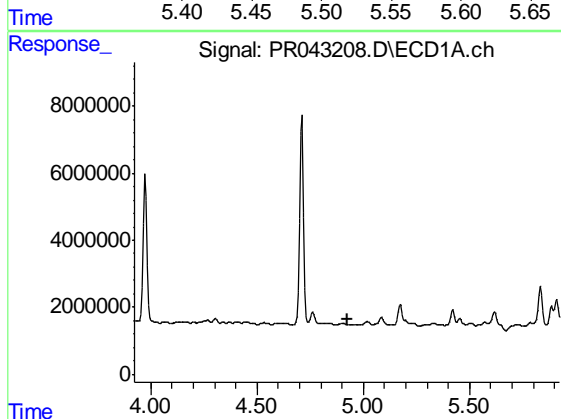
R.T.: 6.365 min
 Delta R.T.: -0.003 min
 Response: 34878989
 Conc: 374.54 ng/ml

Instrument :
 ECD_R
 ClientSampleId :
 3-(14-16)



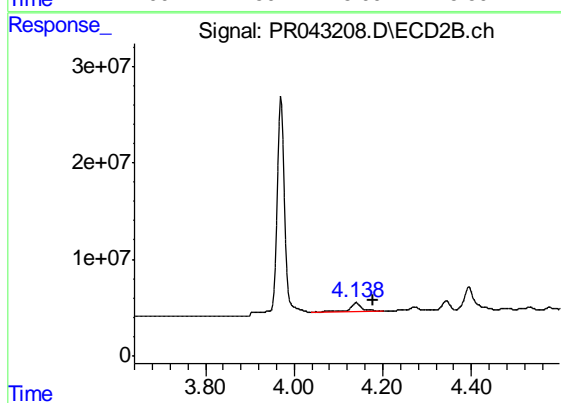
#7 AR-1016-5

R.T.: 5.515 min
 Delta R.T.: -0.003 min
 Response: 38825634
 Conc: 234.33 ng/ml



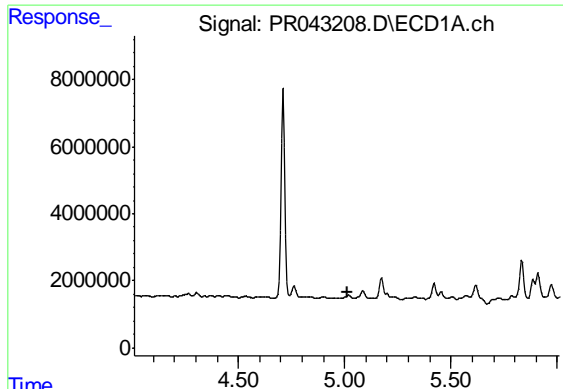
#8 AR-1221-1

R.T.: 0.000 min
 Exp R.T. : 4.923 min
 Response: 0
 Conc: N.D.



#8 AR-1221-1

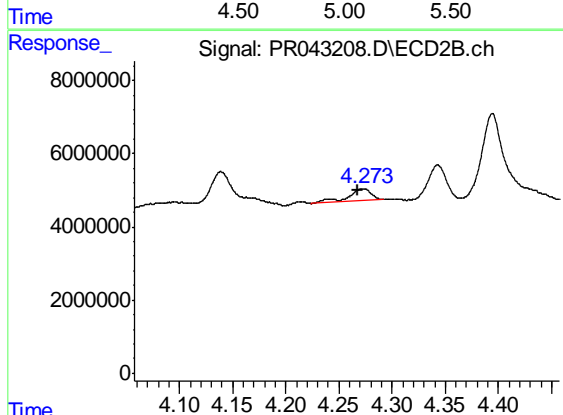
R.T.: 4.139 min
 Delta R.T.: -0.041 min
 Response: 19475701
 Conc: 162.21 ng/ml



#9 AR-1221-2

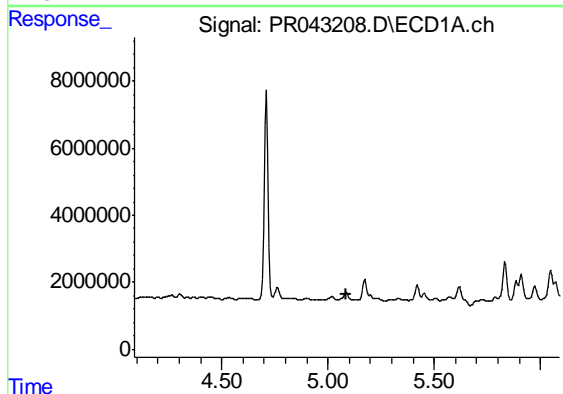
R.T.: 0.000 min
 Exp R.T. : 5.011 min
 Response: 0
 Conc: N.D.

Instrument :
 ECD_R
 ClientSampleId :
 3-(14-16)



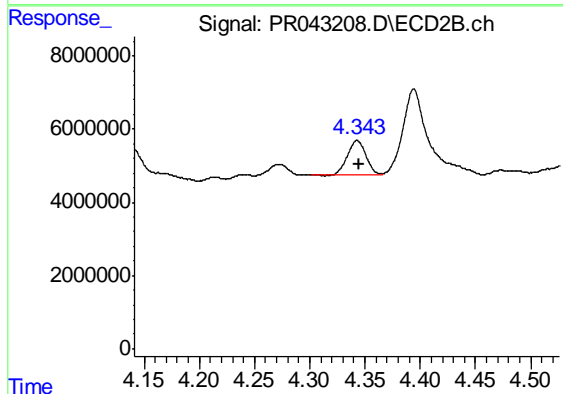
#9 AR-1221-2

R.T.: 4.273 min
 Delta R.T.: 0.006 min
 Response: 5216492
 Conc: 57.05 ng/ml



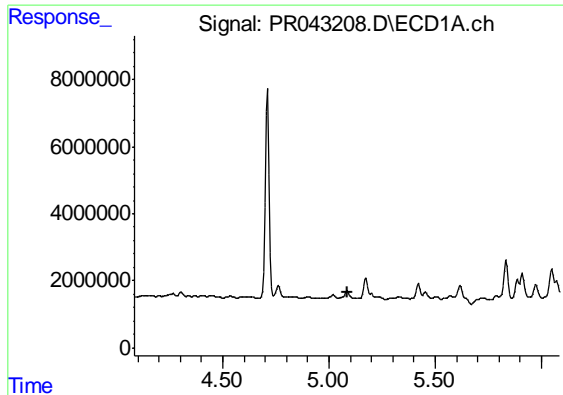
#10 AR-1221-3

R.T.: 0.000 min
 Exp R.T. : 5.089 min
 Response: 0
 Conc: N.D.



#10 AR-1221-3

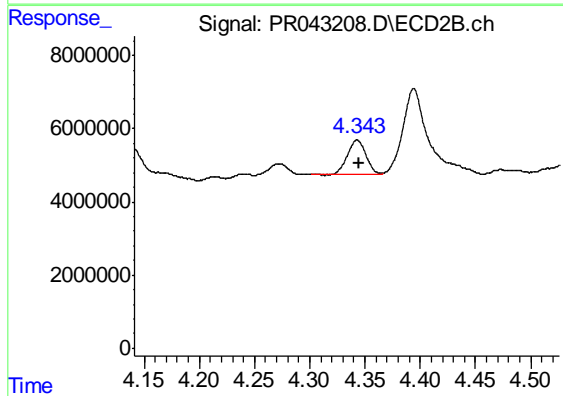
R.T.: 4.343 min
 Delta R.T.: -0.001 min
 Response: 11156406
 Conc: 39.57 ng/ml



#11 AR-1232-1

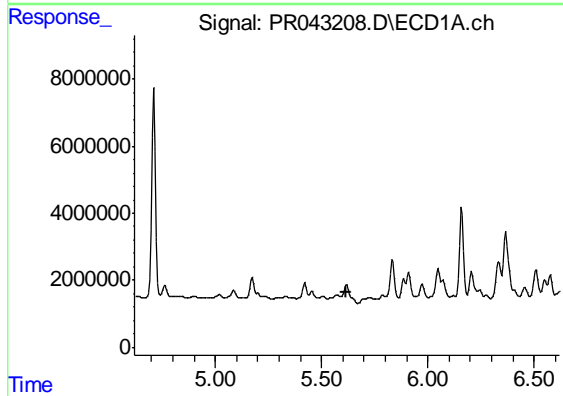
R.T.: 0.000 min
 Exp R.T. : 5.085 min
 Response: 0
 Conc: N.D.

Instrument :
 ECD_R
 ClientSampleId :
 3-(14-16)



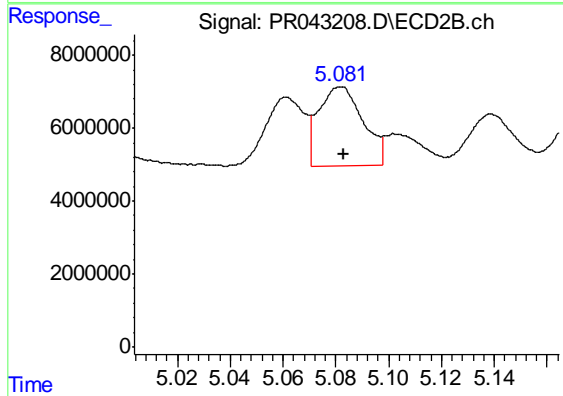
#11 AR-1232-1

R.T.: 4.343 min
 Delta R.T.: -0.002 min
 Response: 11156406
 Conc: 27.37 ng/ml



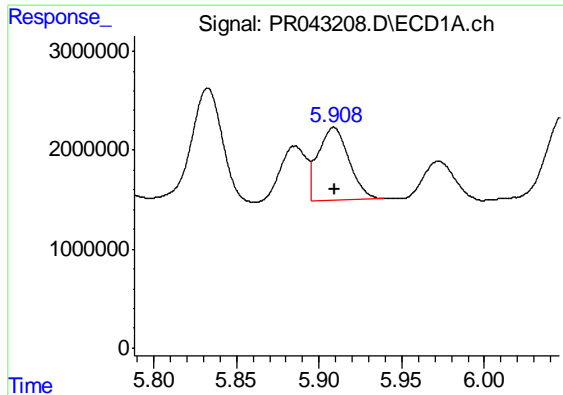
#12 AR-1232-2

R.T.: 0.000 min
 Exp R.T. : 5.619 min
 Response: 0
 Conc: N.D.



#12 AR-1232-2

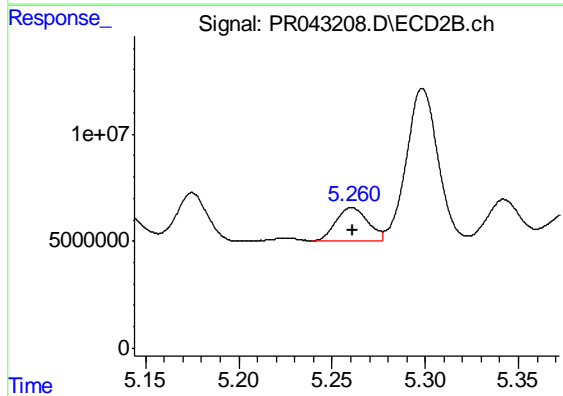
R.T.: 5.082 min
 Delta R.T.: 0.000 min
 Response: 25259607
 Conc: 61.68 ng/ml



#13 AR-1232-3

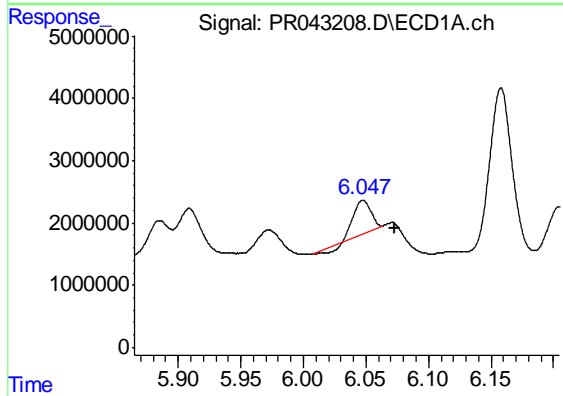
R.T.: 5.909 min
 Delta R.T.: 0.000 min
 Response: 9467389
 Conc: 65.15 ng/ml

Instrument :
 ECD_R
 ClientSampleId :
 3-(14-16)



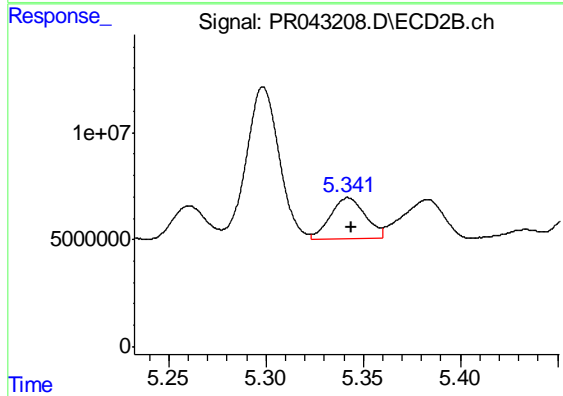
#13 AR-1232-3

R.T.: 5.260 min
 Delta R.T.: 0.000 min
 Response: 18618998
 Conc: 99.80 ng/ml



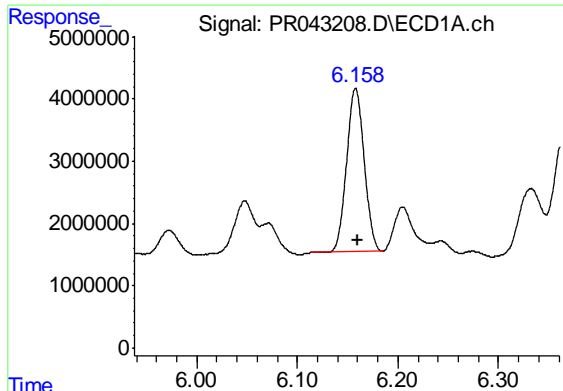
#14 AR-1232-4

R.T.: 6.048 min
 Delta R.T.: -0.026 min
 Response: 4369040
 Conc: 58.75 ng/ml



#14 AR-1232-4

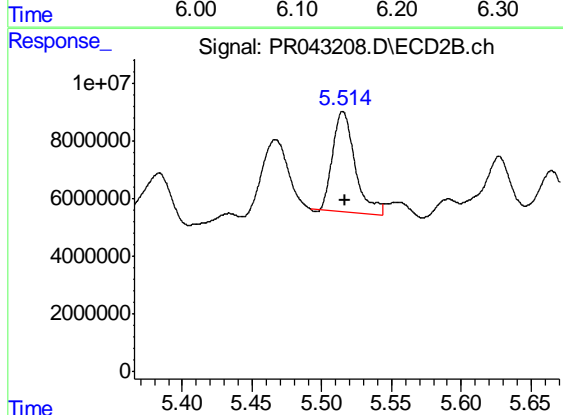
R.T.: 5.342 min
 Delta R.T.: -0.002 min
 Response: 23711892
 Conc: 153.75 ng/ml



#15 AR-1232-5

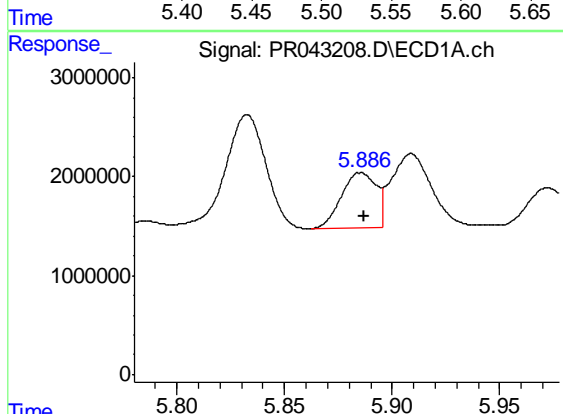
R.T.: 6.158 min
 Delta R.T.: -0.002 min
 Response: 31915793
 Conc: 558.49 ng/ml

Instrument :
 ECD_R
 ClientSampled :
 3-(14-16)



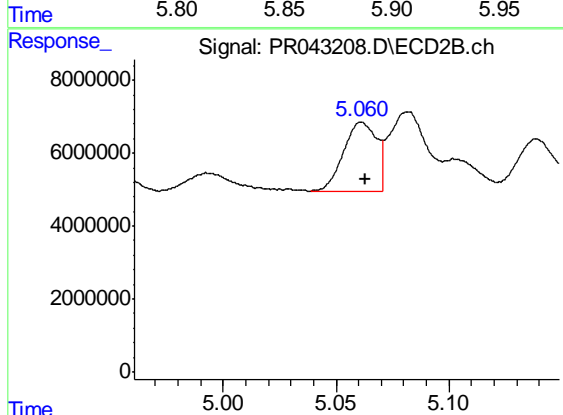
#15 AR-1232-5

R.T.: 5.515 min
 Delta R.T.: -0.002 min
 Response: 38825634
 Conc: 324.81 ng/ml



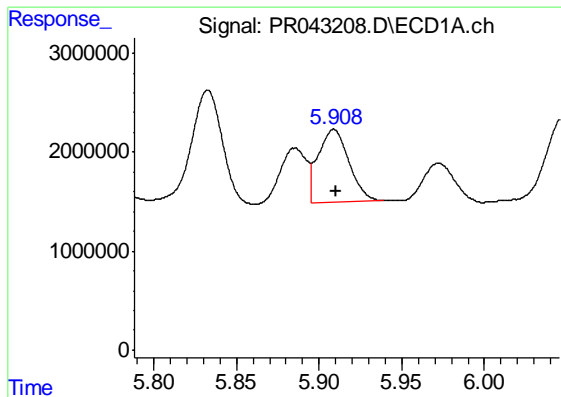
#16 AR-1242-1

R.T.: 5.885 min
 Delta R.T.: -0.002 min
 Response: 6266241
 Conc: 60.71 ng/ml



#16 AR-1242-1

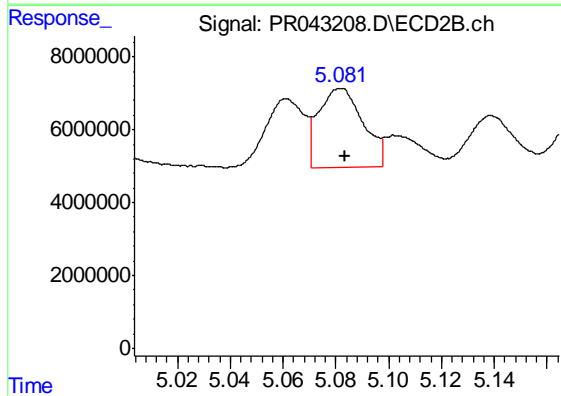
R.T.: 5.061 min
 Delta R.T.: -0.002 min
 Response: 19051568
 Conc: 63.67 ng/ml



#17 AR-1242-2

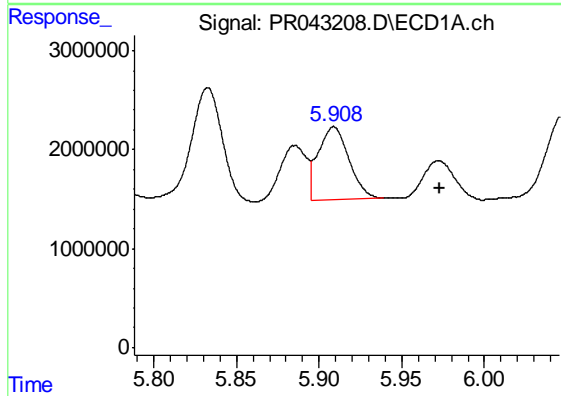
R.T.: 5.909 min
 Delta R.T.: -0.001 min
 Response: 9467389
 Conc: 64.29 ng/ml

Instrument :
 ECD_R
 ClientSampleId :
 3-(14-16)



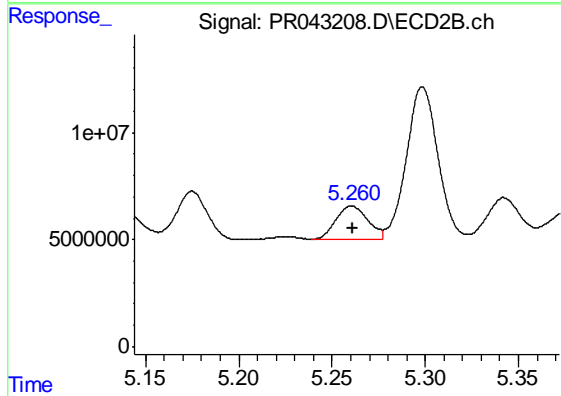
#17 AR-1242-2

R.T.: 5.082 min
 Delta R.T.: -0.001 min
 Response: 25259607
 Conc: 61.54 ng/ml



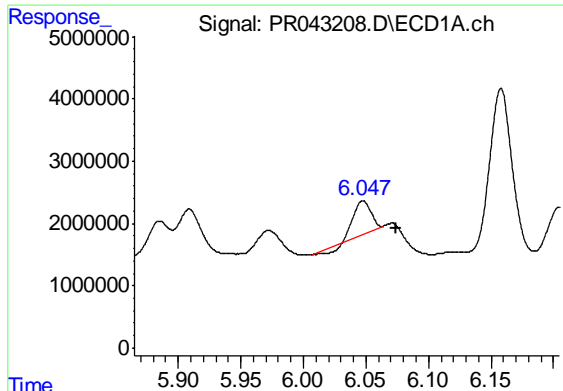
#18 AR-1242-3

R.T.: 5.909 min
 Delta R.T.: -0.064 min
 Response: 9467389
 Conc: 104.86 ng/ml



#18 AR-1242-3

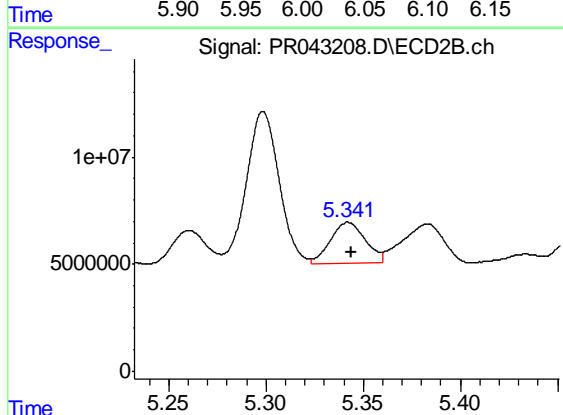
R.T.: 5.260 min
 Delta R.T.: 0.000 min
 Response: 18618998
 Conc: 96.05 ng/ml



#19 AR-1242-4

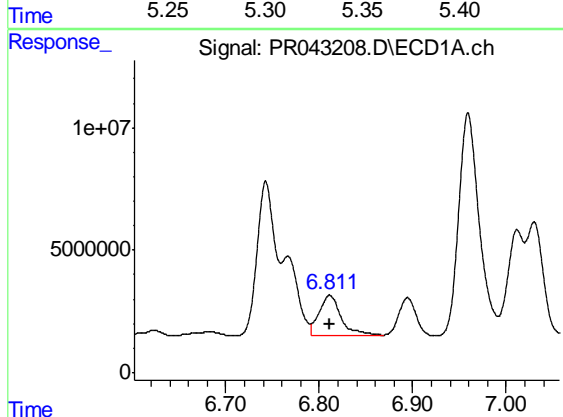
R.T.: 6.048 min
 Delta R.T.: -0.026 min
 Response: 4369040
 Conc: 58.42 ng/ml

Instrument :
 ECD_R
 ClientSampled :
 3-(14-16)



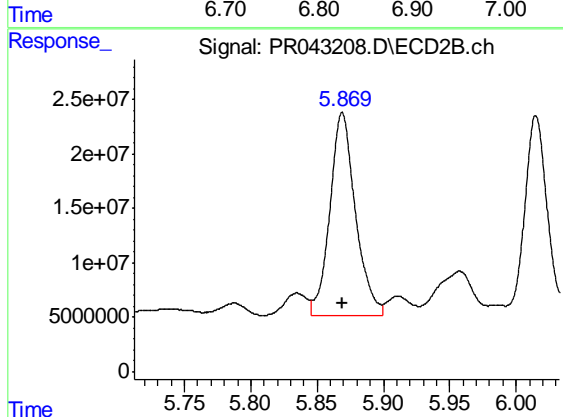
#19 AR-1242-4

R.T.: 5.342 min
 Delta R.T.: -0.002 min
 Response: 23711892
 Conc: 133.32 ng/ml



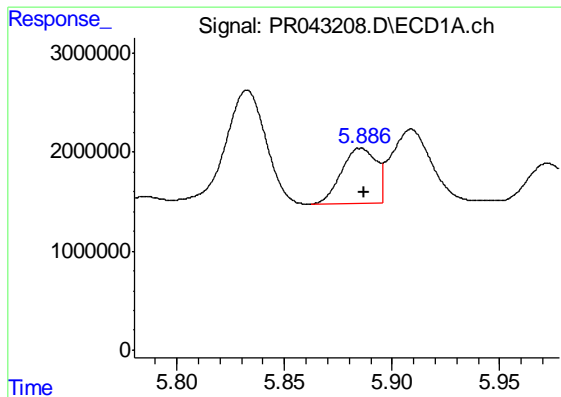
#20 AR-1242-5

R.T.: 6.811 min
 Delta R.T.: 0.000 min
 Response: 27853264
 Conc: 307.04 ng/ml



#20 AR-1242-5

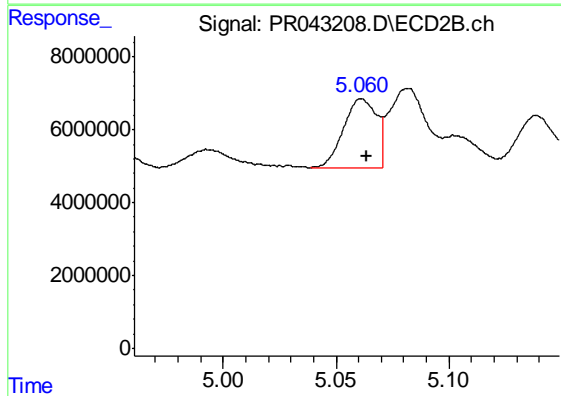
R.T.: 5.869 min
 Delta R.T.: 0.000 min
 Response: 249596910
 Conc: 963.94 ng/ml



#21 AR-1248-1

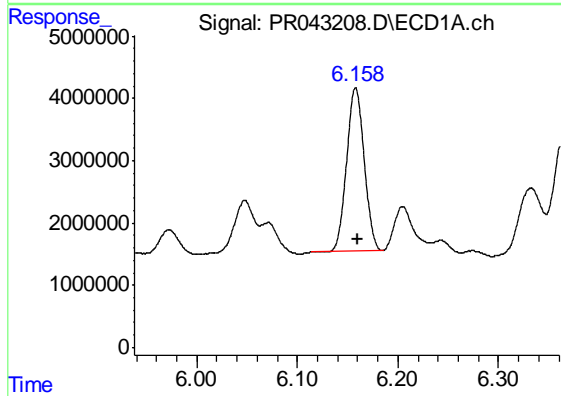
R.T.: 5.885 min
 Delta R.T.: -0.002 min
 Response: 6266241
 Conc: 88.59 ng/ml

Instrument :
 ECD_R
 ClientSampleId :
 3-(14-16)



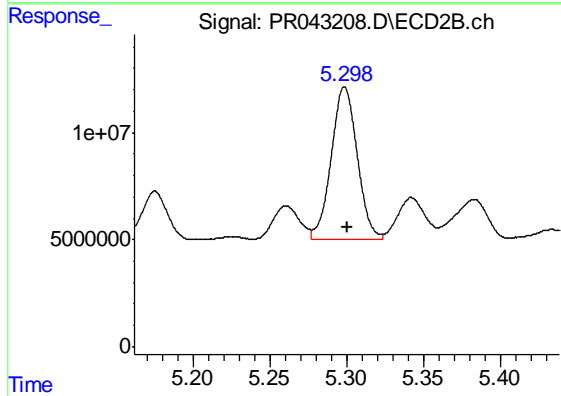
#21 AR-1248-1

R.T.: 5.061 min
 Delta R.T.: -0.002 min
 Response: 19051568
 Conc: 90.51 ng/ml



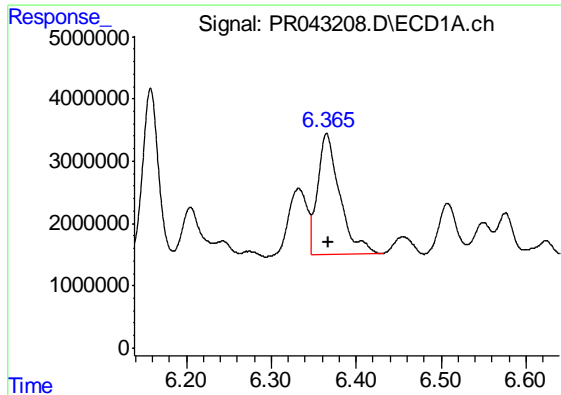
#22 AR-1248-2

R.T.: 6.158 min
 Delta R.T.: -0.002 min
 Response: 31915793
 Conc: 313.68 ng/ml



#22 AR-1248-2

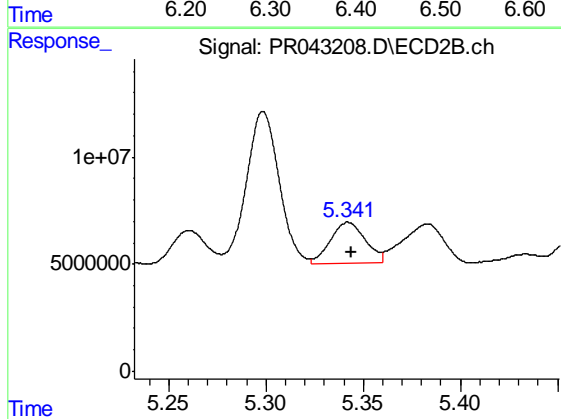
R.T.: 5.299 min
 Delta R.T.: -0.002 min
 Response: 83590316
 Conc: 363.49 ng/ml



#23 AR-1248-3

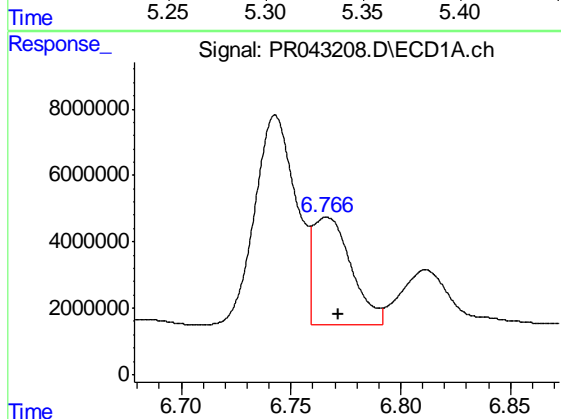
R.T.: 6.365 min
 Delta R.T.: -0.002 min
 Response: 34878989
 Conc: 300.53 ng/ml

Instrument :
 ECD_R
 ClientSampleId :
 3-(14-16)



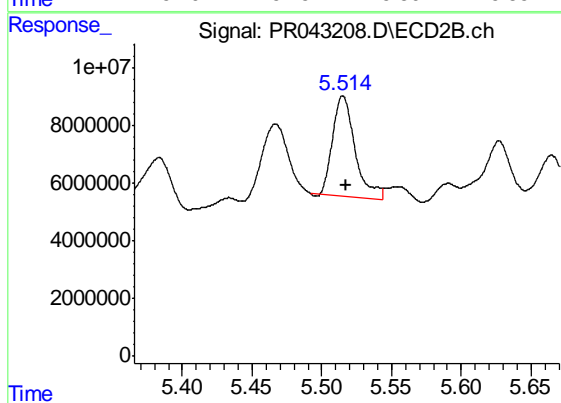
#23 AR-1248-3

R.T.: 5.342 min
 Delta R.T.: -0.002 min
 Response: 23711892
 Conc: 103.78 ng/ml



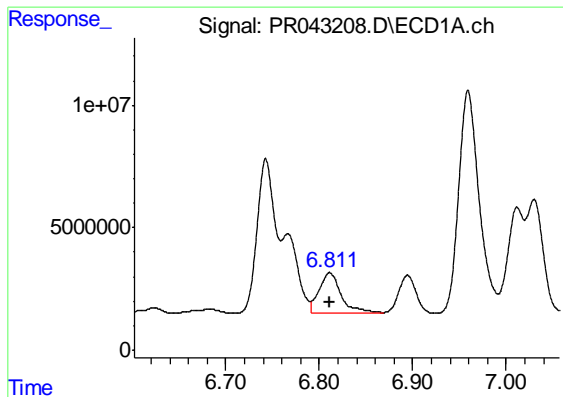
#24 AR-1248-4

R.T.: 6.766 min
 Delta R.T.: -0.005 min
 Response: 39205709
 Conc: 271.81 ng/ml



#24 AR-1248-4

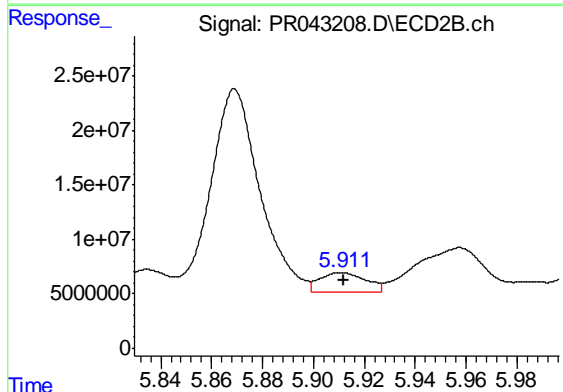
R.T.: 5.515 min
 Delta R.T.: -0.002 min
 Response: 38825634
 Conc: 191.27 ng/ml



#25 AR-1248-5

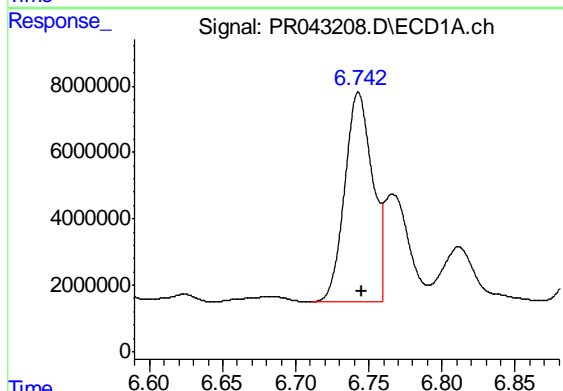
R.T.: 6.811 min
 Delta R.T.: 0.000 min
 Response: 27853264
 Conc: 204.61 ng/ml

Instrument :
 ECD_R
 ClientSampleId :
 3-(14-16)



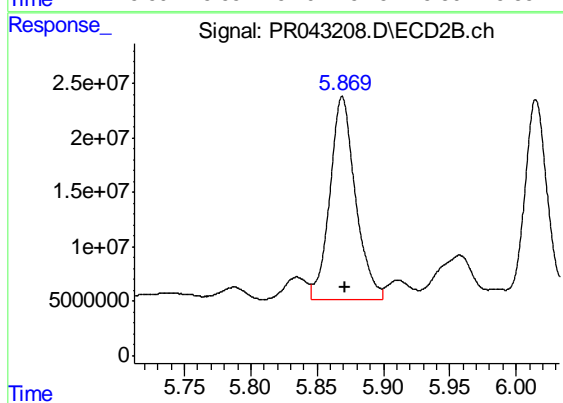
#25 AR-1248-5

R.T.: 5.911 min
 Delta R.T.: 0.000 min
 Response: 22504677
 Conc: 71.11 ng/ml



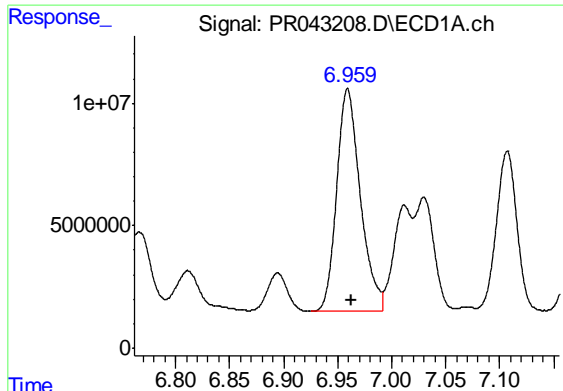
#26 AR-1254-1

R.T.: 6.743 min
 Delta R.T.: -0.002 min
 Response: 83319859
 Conc: 592.01 ng/ml



#26 AR-1254-1

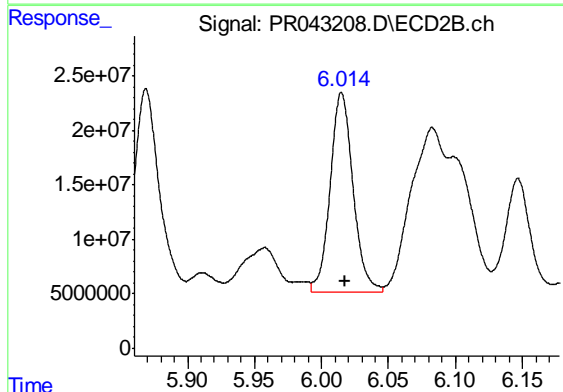
R.T.: 5.869 min
 Delta R.T.: -0.002 min
 Response: 249596910
 Conc: 550.30 ng/ml



#27 AR-1254-2

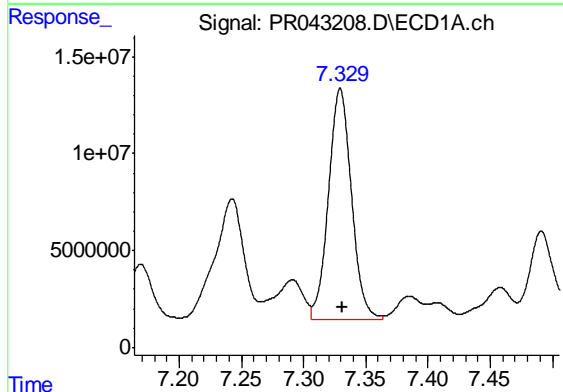
R.T.: 6.959 min
 Delta R.T.: -0.003 min
 Response: 138866109
 Conc: 652.27 ng/ml

Instrument :
 ECD_R
 ClientSampleId :
 3-(14-16)



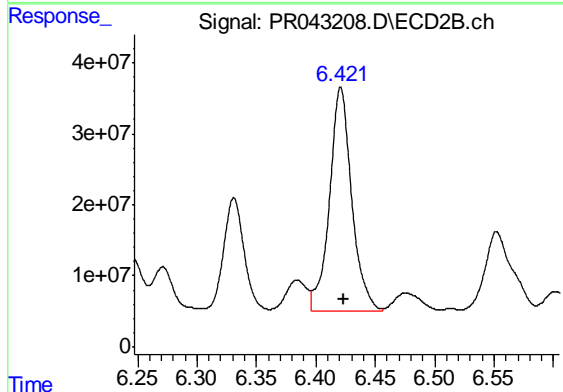
#27 AR-1254-2

R.T.: 6.015 min
 Delta R.T.: -0.002 min
 Response: 218229999
 Conc: 498.32 ng/ml



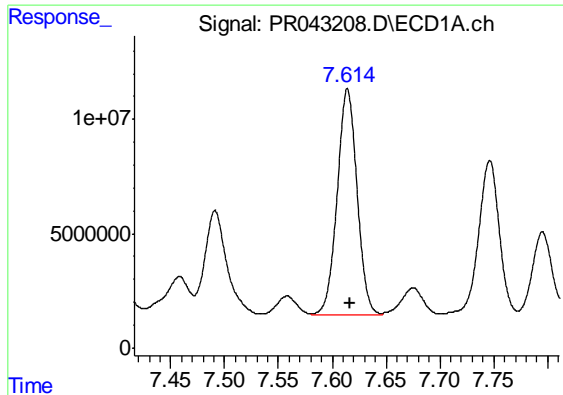
#28 AR-1254-3

R.T.: 7.330 min
 Delta R.T.: -0.002 min
 Response: 152141744
 Conc: 581.97 ng/ml



#28 AR-1254-3

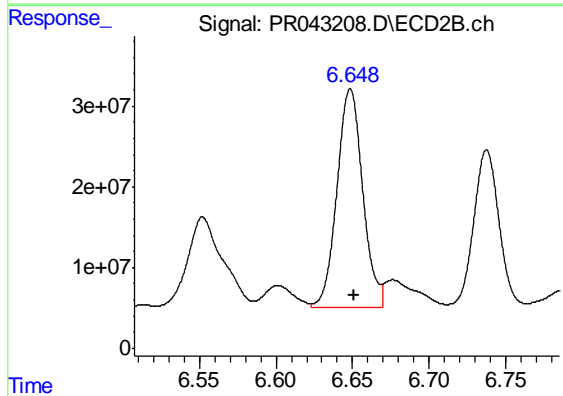
R.T.: 6.421 min
 Delta R.T.: -0.003 min
 Response: 406565161
 Conc: 519.53 ng/ml



#29 AR-1254-4

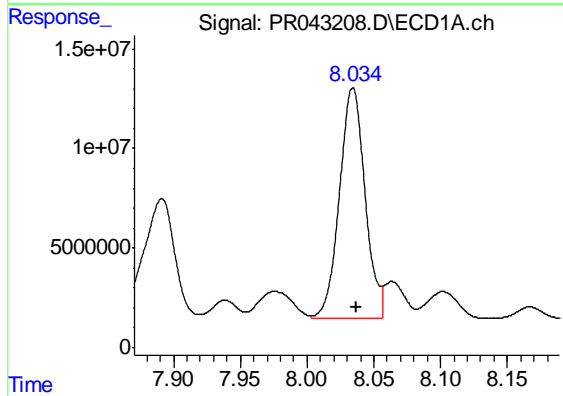
R.T.: 7.614 min
Delta R.T.: -0.003 min
Response: 126535509
Conc: 619.30 ng/ml

Instrument :
ECD_R
ClientSampleId :
3-(14-16)



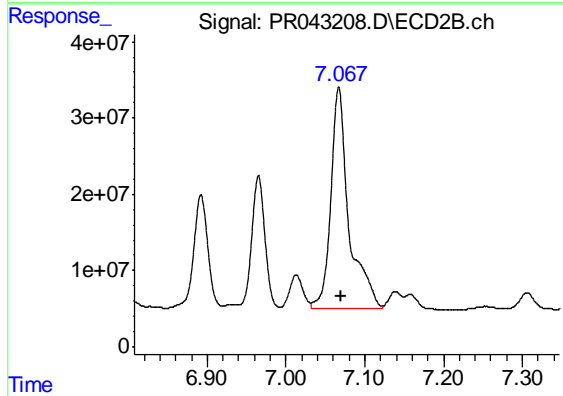
#29 AR-1254-4

R.T.: 6.649 min
Delta R.T.: -0.003 min
Response: 316963071
Conc: 534.26 ng/ml



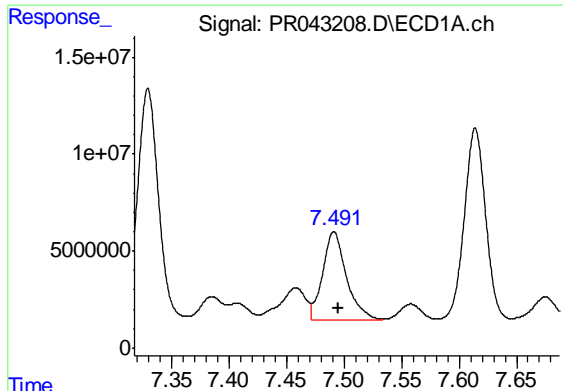
#30 AR-1254-5

R.T.: 8.034 min
Delta R.T.: -0.003 min
Response: 154837577
Conc: 700.38 ng/ml



#30 AR-1254-5

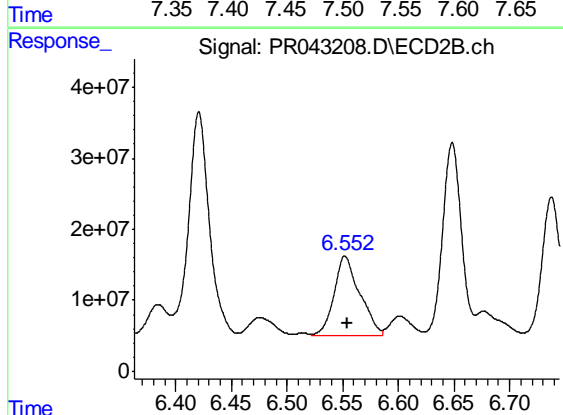
R.T.: 7.067 min
Delta R.T.: -0.003 min
Response: 461231527
Conc: 607.08 ng/ml



#31 AR-1260-1

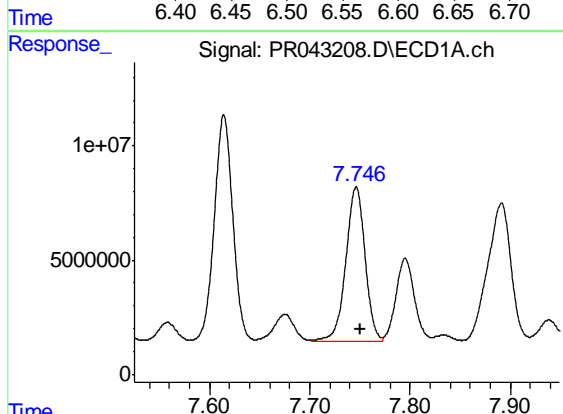
R.T.: 7.491 min
Delta R.T.: -0.004 min
Response: 64720638
Conc: 355.70 ng/ml

Instrument :
ECD_R
ClientSampleId :
3-(14-16)



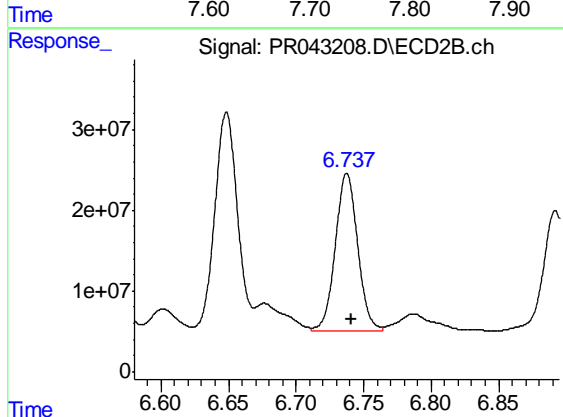
#31 AR-1260-1

R.T.: 6.552 min
Delta R.T.: -0.002 min
Response: 176943626
Conc: 345.41 ng/ml



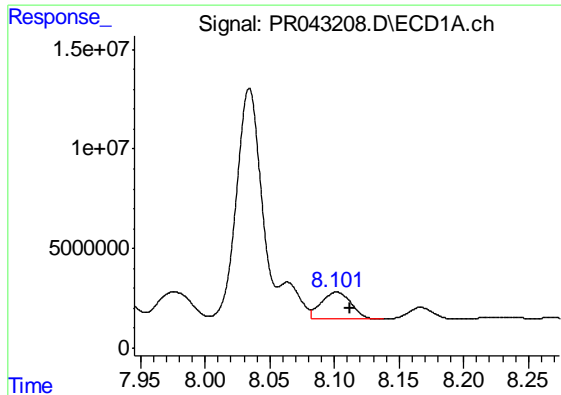
#32 AR-1260-2

R.T.: 7.746 min
Delta R.T.: -0.004 min
Response: 89694200
Conc: 376.07 ng/ml



#32 AR-1260-2

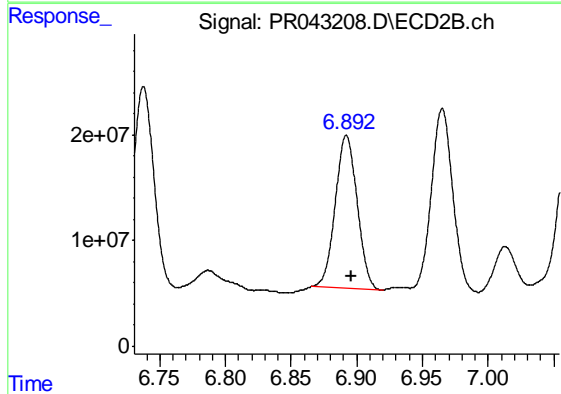
R.T.: 6.738 min
Delta R.T.: -0.003 min
Response: 224449573
Conc: 315.19 ng/ml



#33 AR-1260-3

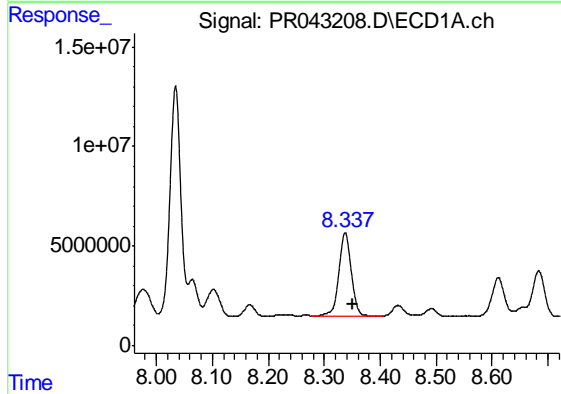
R.T.: 8.102 min
Delta R.T.: -0.010 min
Response: 21853996
Conc: 116.52 ng/ml

Instrument :
ECD_R
ClientSampleId :
3-(14-16)



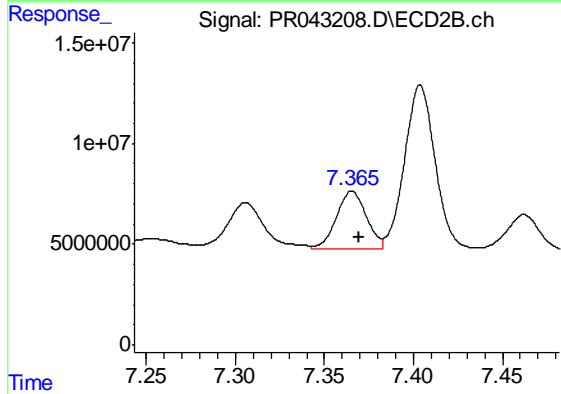
#33 AR-1260-3

R.T.: 6.892 min
Delta R.T.: -0.004 min
Response: 168177447
Conc: 285.46 ng/ml



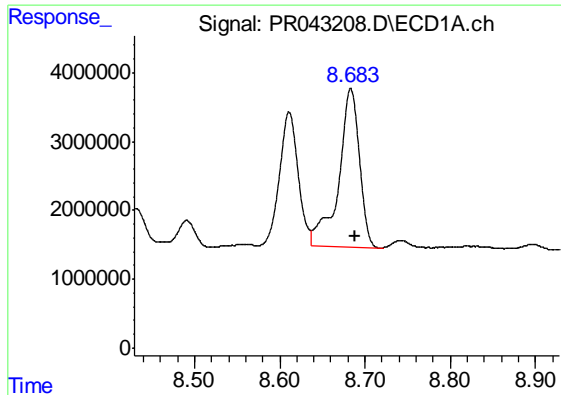
#34 AR-1260-4

R.T.: 8.337 min
Delta R.T.: -0.013 min
Response: 63784521
Conc: 308.93 ng/ml



#34 AR-1260-4

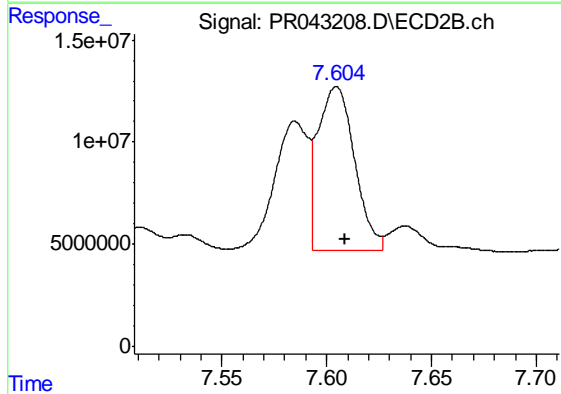
R.T.: 7.366 min
Delta R.T.: -0.004 min
Response: 33040488
Conc: 65.49 ng/ml



#35 AR-1260-5

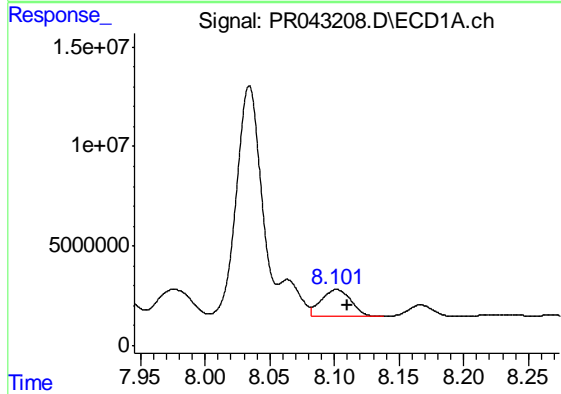
R.T.: 8.683 min
 Delta R.T.: -0.005 min
 Response: 39264431
 Conc: 91.03 ng/ml

Instrument :
 ECD_R
 ClientSampled :
 3-(14-16)



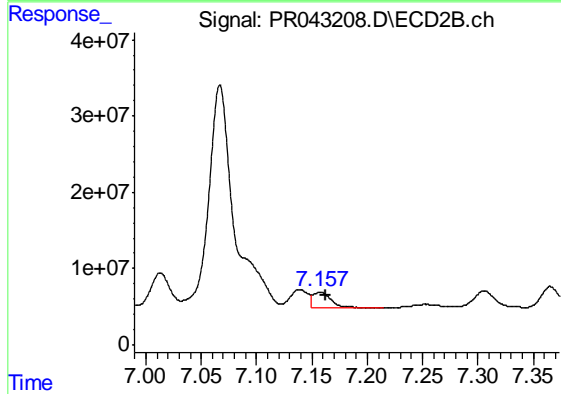
#35 AR-1260-5

R.T.: 7.605 min
 Delta R.T.: -0.004 min
 Response: 98810028
 Conc: 68.98 ng/ml



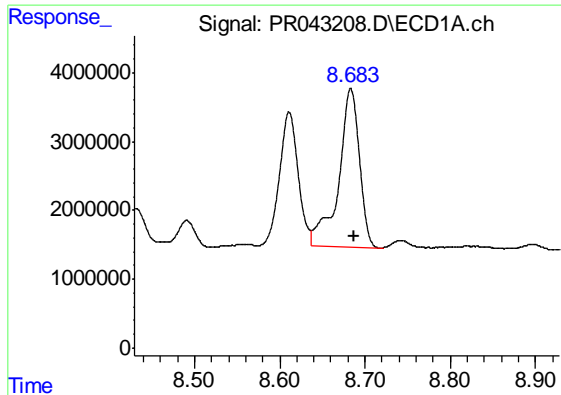
#36 AR-1262-1

R.T.: 8.102 min
 Delta R.T.: -0.008 min
 Response: 21853996
 Conc: 77.88 ng/ml



#36 AR-1262-1

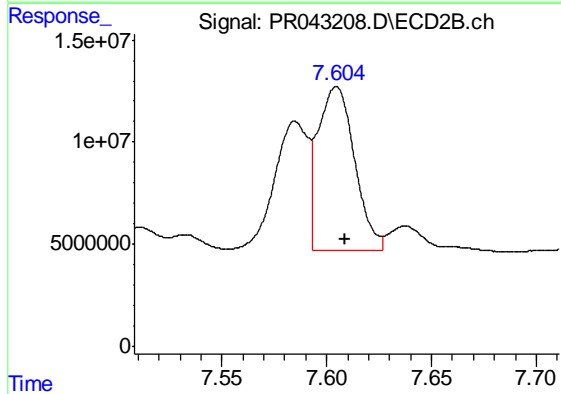
R.T.: 7.158 min
 Delta R.T.: -0.005 min
 Response: 21664363
 Conc: 58.45 ng/ml



#37 AR-1262-2

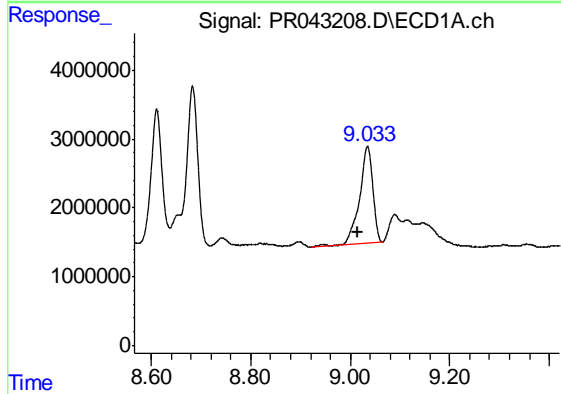
R.T.: 8.683 min
 Delta R.T.: -0.003 min
 Response: 39264431
 Conc: 74.48 ng/ml

Instrument :
 ECD_R
 ClientSampled :
 3-(14-16)



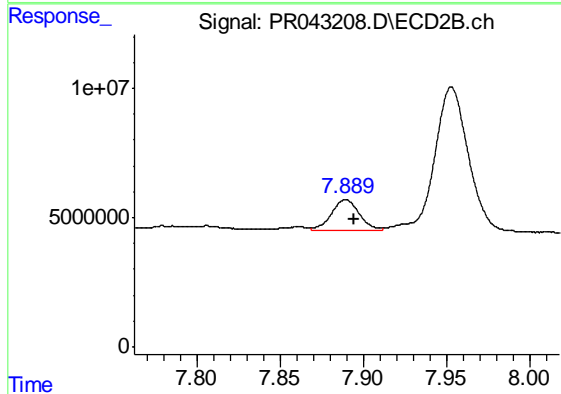
#37 AR-1262-2

R.T.: 7.605 min
 Delta R.T.: -0.004 min
 Response: 98810028
 Conc: 55.10 ng/ml



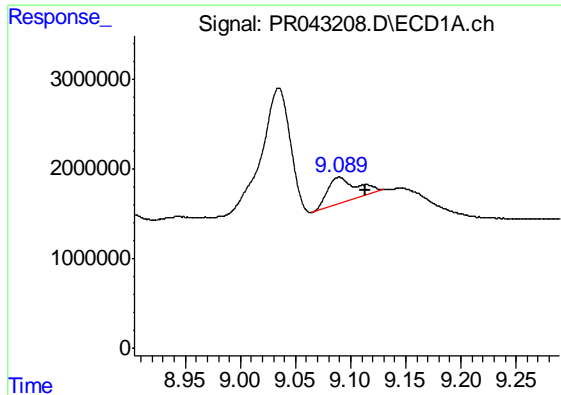
#38 AR-1262-3

R.T.: 9.035 min
 Delta R.T.: 0.018 min
 Response: 26088615
 Conc: 77.72 ng/ml



#38 AR-1262-3

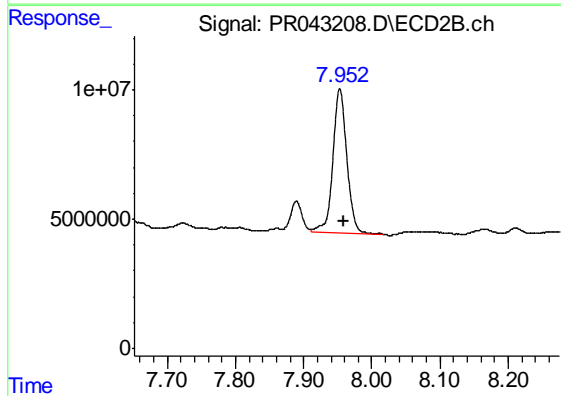
R.T.: 7.889 min
 Delta R.T.: -0.005 min
 Response: 14006285
 Conc: 20.71 ng/ml



#39 AR-1262-4

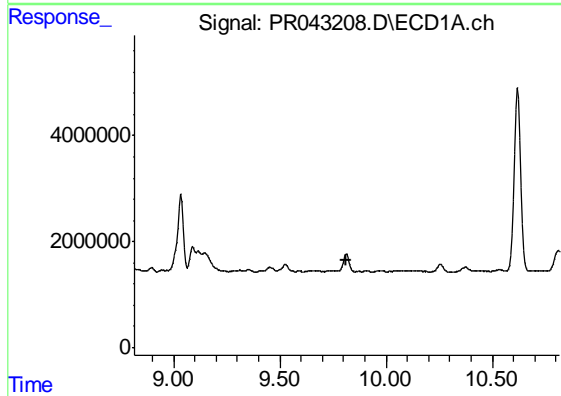
R.T.: 9.090 min
 Delta R.T.: -0.024 min
 Response: 5286351
 Conc: 40.88 ng/ml

Instrument :
 ECD_R
 ClientSampled :
 3-(14-16)



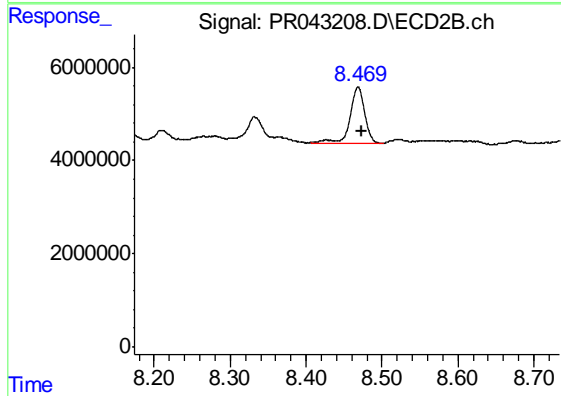
#39 AR-1262-4

R.T.: 7.953 min
 Delta R.T.: -0.006 min
 Response: 79249426
 Conc: 66.92 ng/ml



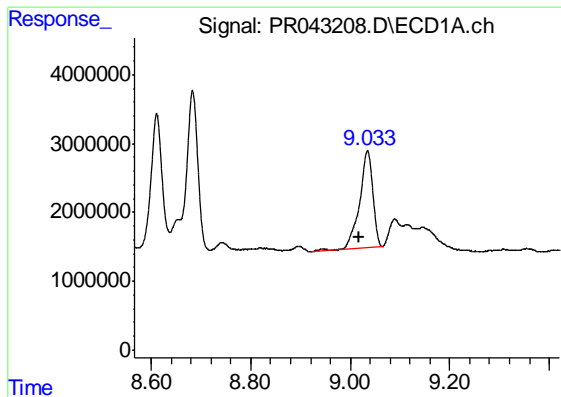
#40 AR-1262-5

R.T.: 0.000 min
 Exp R.T. : 9.816 min
 Response: 0
 Conc: N.D.



#40 AR-1262-5

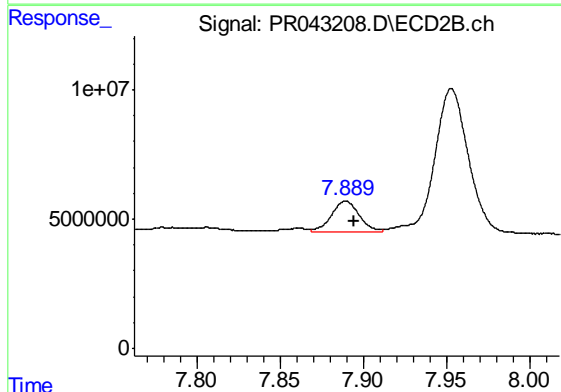
R.T.: 8.469 min
 Delta R.T.: -0.005 min
 Response: 16340707
 Conc: 31.97 ng/ml



#41 AR-1268-1

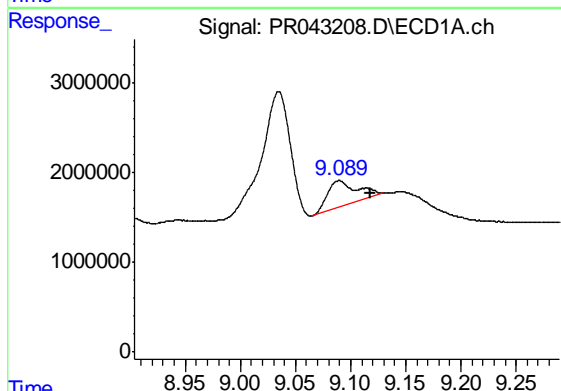
R.T.: 9.035 min
 Delta R.T.: 0.018 min
 Response: 26088615
 Conc: 43.00 ng/ml

Instrument :
 ECD_R
 ClientSampleId :
 3-(14-16)



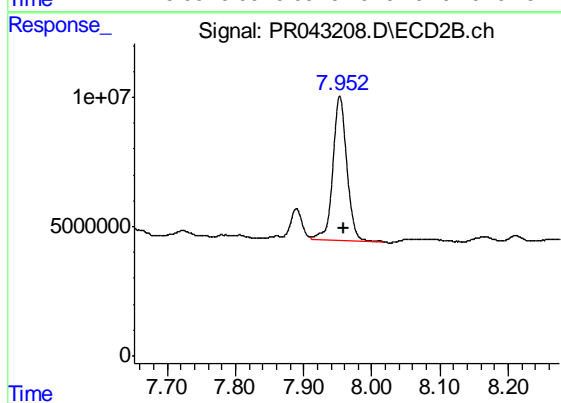
#41 AR-1268-1

R.T.: 7.889 min
 Delta R.T.: -0.005 min
 Response: 14006285
 Conc: 6.82 ng/ml



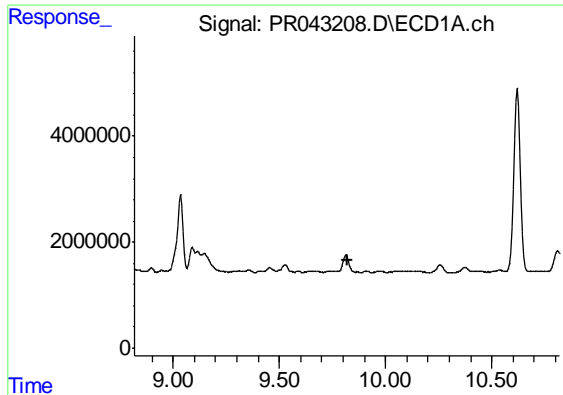
#42 AR-1268-2

R.T.: 9.090 min
 Delta R.T.: -0.029 min
 Response: 5286351
 Conc: 9.64 ng/ml



#42 AR-1268-2

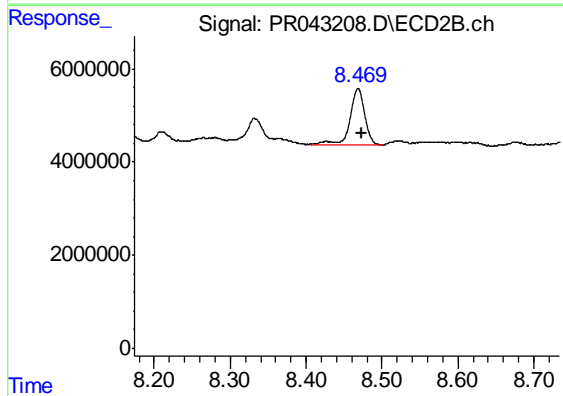
R.T.: 7.953 min
 Delta R.T.: -0.006 min
 Response: 79249426
 Conc: 44.41 ng/ml



#44 AR-1268-4

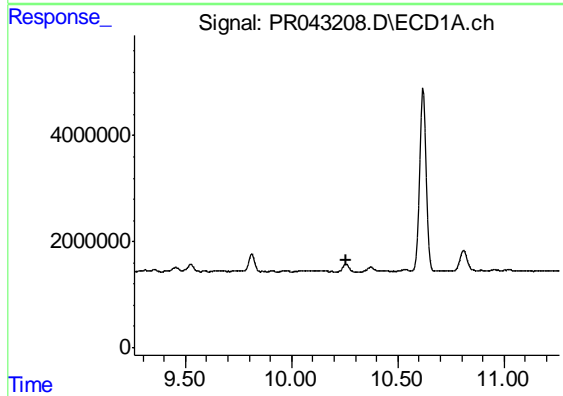
R.T.: 0.000 min
 Exp R.T. : 9.818 min
 Response: 0
 Conc: N.D.

Instrument :
 ECD_R
 ClientSampleId :
 3-(14-16)



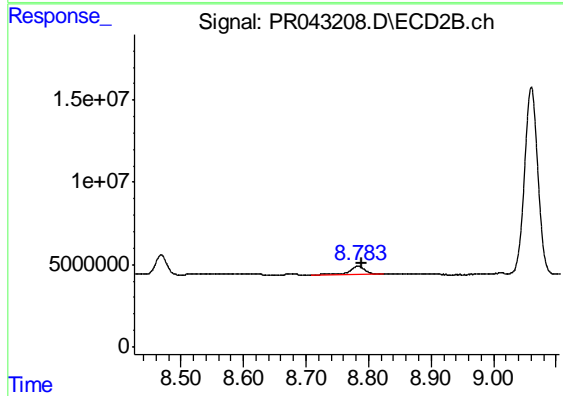
#44 AR-1268-4

R.T.: 8.469 min
 Delta R.T.: -0.005 min
 Response: 16340707
 Conc: 28.50 ng/ml



#45 AR-1268-5

R.T.: 0.000 min
 Exp R.T. : 10.261 min
 Response: 0
 Conc: N.D.



#45 AR-1268-5

R.T.: 8.783 min
 Delta R.T.: -0.005 min
 Response: 7873434
 Conc: 1.93 ng/ml