

Data Path : Z:\pestpcbsrv\HPCHEM1\ECD_R\Data\PR121919\
 Data File : PR044026.D
 Signal(s) : Signal #1: ECD1A.ch Signal #2: ECD2B.ch
 Acq On : 19 Dec 2019 12:24
 Operator : SM\AJ
 Sample : K6308-03
 Misc :
 ALS Vial : 11 Sample Multiplier: 1

Instrument :
 ECD_R
 ClientSampleId :

Integration File signal 1: autoint1.e
 Integration File signal 2: autoint2.e
 Quant Time: Dec 19 13:17:12 2019
 Quant Method : Z:\pestpcbsrv\HPCHEM1\ECD_R\Method\PR121519CLP.M
 Quant Title : GC EXTRACTABLES
 QLast Update : Mon Dec 16 06:15:17 2019
 Response via : Initial Calibration
 Integrator: ChemStation

Volume Inj. : 1 µl
 Signal #1 Phase : ZB MR2 Signal #2 Phase: ZB MR2
 Signal #1 Info : 30Mx0.32mmx 0.5µm Signal #2 Info : 30M x 0.32mm x 0.25µm

| Compound | RT#1 | RT#2 | Resp#1 | Resp#2 | ng/ml | ng/ml |
|-----------------------------|--------|--------|----------|---------|--------|----------|
| ----- | | | | | | |
| System Monitoring Compounds | | | | | | |
| 1) SA Tetrachlo... | 4.716 | 3.975 | 80738052 | 216.4E6 | 20.200 | 19.606 |
| 2) SA Decachlor... | 10.619 | 9.057 | 210.0E6 | 458.9E6 | 44.003 | 45.483 |
| Target Compounds | | | | | | |
| 5) L1 AR-1016-3 | 0.000 | 5.206f | 0 | 305507 | N.D. | 1.402 # |
| 6) L1 AR-1016-4 | 0.000 | 5.369f | 0 | 5265911 | N.D. | 29.168 # |
| 8) L2 AR-1221-1 | 0.000 | 4.142f | 0 | 1684430 | N.D. | 14.757 # |
| 9) L2 AR-1221-2 | 0.000 | 4.280 | 0 | 2653469 | N.D. | 32.523 # |
| 10) L2 AR-1221-3 | 0.000 | 4.346 | 0 | 1935772 | N.D. | 6.938 # |
| 11) L3 AR-1232-1 | 0.000 | 4.346 | 0 | 1935772 | N.D. | 8.389 # |
| 13) L3 AR-1232-3 | 0.000 | 5.206f | 0 | 305507 | N.D. | 3.222 # |
| 14) L3 AR-1232-4 | 0.000 | 5.369 | 0 | 5265911 | N.D. | 60.814 # |
| 15) L3 AR-1232-5 | 0.000 | 5.449f | 0 | 1205621 | N.D. | 12.261 # |
| 18) L4 AR-1242-3 | 0.000 | 5.206f | 0 | 305507 | N.D. | 1.607 # |
| 19) L4 AR-1242-4 | 0.000 | 5.369 | 0 | 5265911 | N.D. | 28.803 # |
| 20) L4 AR-1242-5 | 0.000 | 5.893 | 0 | 5518078 | N.D. | 18.602 # |
| 22) L5 AR-1248-2 | 0.000 | 5.369f | 0 | 5265911 | N.D. | 20.125 # |
| 23) L5 AR-1248-3 | 0.000 | 5.369 | 0 | 5265911 | N.D. | 19.890 # |
| 24) L5 AR-1248-4 | 0.000 | 5.449f | 0 | 1205621 | N.D. | 3.623 # |
| 25) L5 AR-1248-5 | 0.000 | 5.928 | 0 | 1164292 | N.D. | 2.848 # |
| 26) L6 AR-1254-1 | 0.000 | 5.893 | 0 | 5518078 | N.D. | 9.164 # |
| 32) L7 AR-1260-2 | 0.000 | 6.722 | 0 | 2030115 | N.D. | 2.530 # |
| 43) L9 AR-1268-3 | 0.000 | 8.164 | 0 | 3181615 | N.D. | 1.767 # |
| 45) L9 AR-1268-5 | 0.000 | 8.781 | 0 | 3320577 | N.D. | 0.680 # |

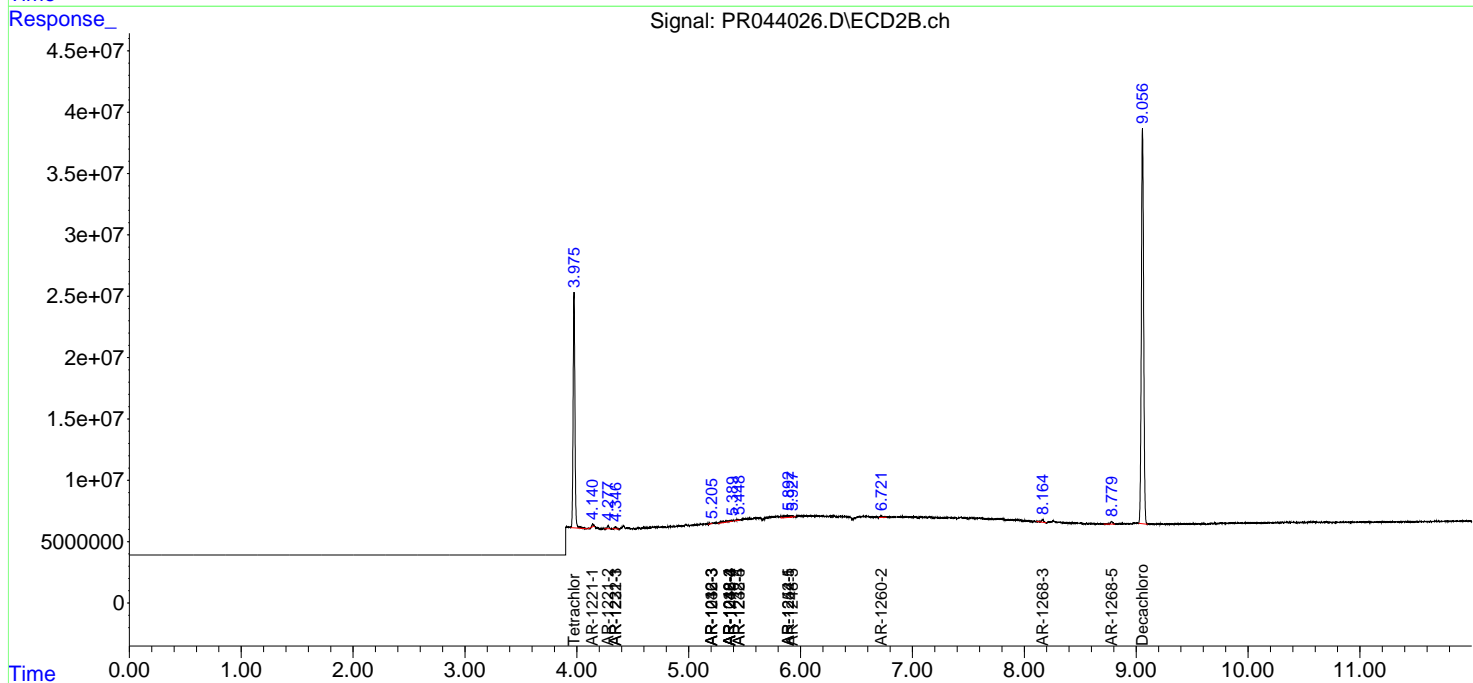
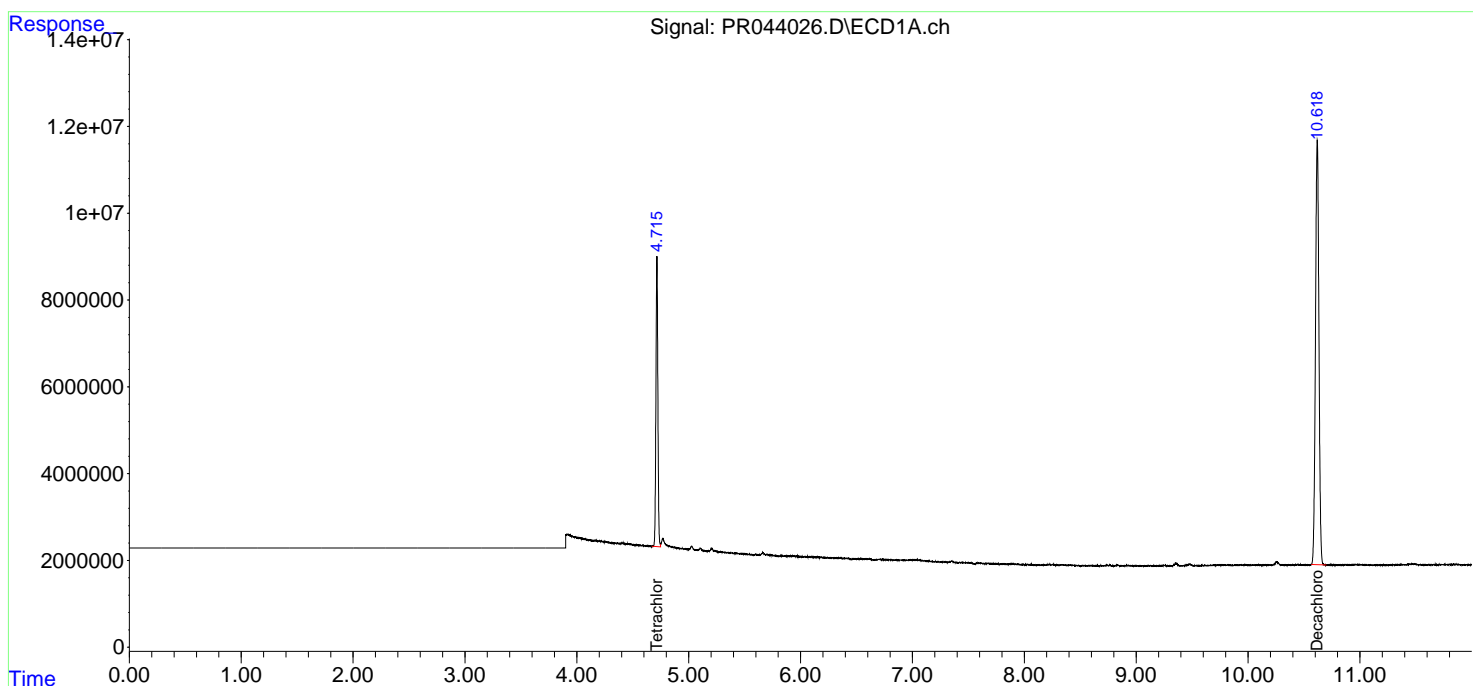
(f)=RT Delta > 1/2 Window (#)=Amounts differ by > 25% (m)=manual int.

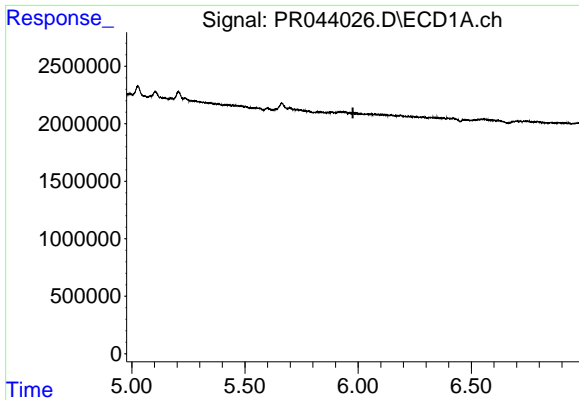
Data Path : Z:\pestpcbsrv\HPCHEM1\ECD_R\Data\PR121919\
 Data File : PR044026.D
 Signal(s) : Signal #1: ECD1A.ch Signal #2: ECD2B.ch
 Acq On : 19 Dec 2019 12:24
 Operator : SM\AJ
 Sample : K6308-03
 Misc :
 ALS Vial : 11 Sample Multiplier: 1

Instrument :
 ECD_R
 ClientSampled :

Integration File signal 1: autoint1.e
 Integration File signal 2: autoint2.e
 Quant Time: Dec 19 13:17:12 2019
 Quant Method : Z:\pestpcbsrv\HPCHEM1\ECD_R\Method\PR121519CLP.M
 Quant Title : GC EXTRACTABLES
 QLast Update : Mon Dec 16 06:15:17 2019
 Response via : Initial Calibration
 Integrator: ChemStation

Volume Inj. : 1 µl
 Signal #1 Phase : ZB MR1 Signal #2 Phase: ZB MR2
 Signal #1 Info : 30Mx0.32mmx 0.5µm Signal #2 Info : 30M x 0.32mm x 0.25µm

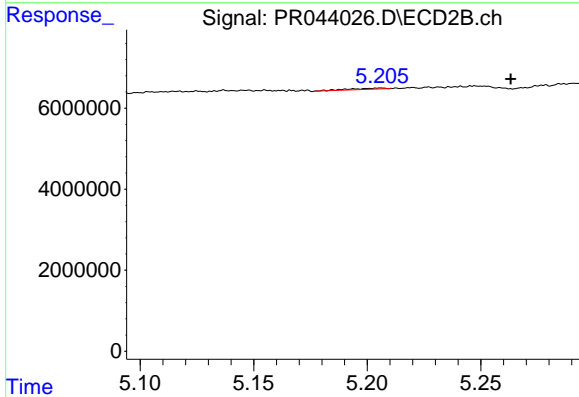




#5 AR-1016-3

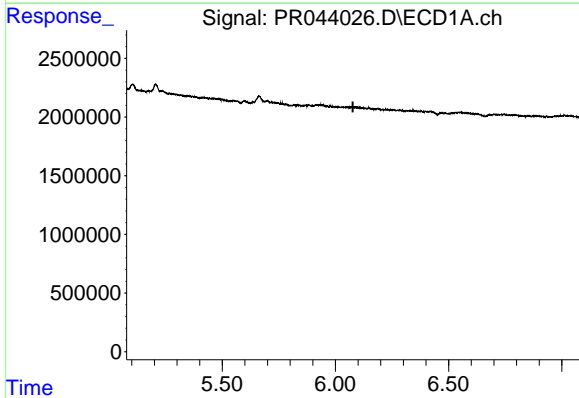
R.T.: 0.000 min
 Exp R.T. : 5.977 min
 Response: 0
 Conc: N.D.

Instrument :
 ECD_R
 ClientSampleId :



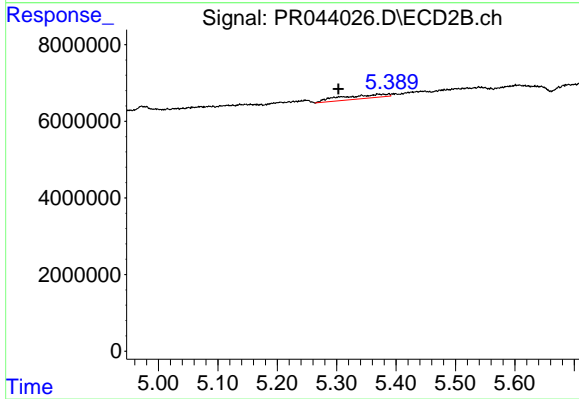
#5 AR-1016-3

R.T.: 5.206 min
 Delta R.T.: -0.057 min
 Response: 305507
 Conc: 1.40 ng/ml



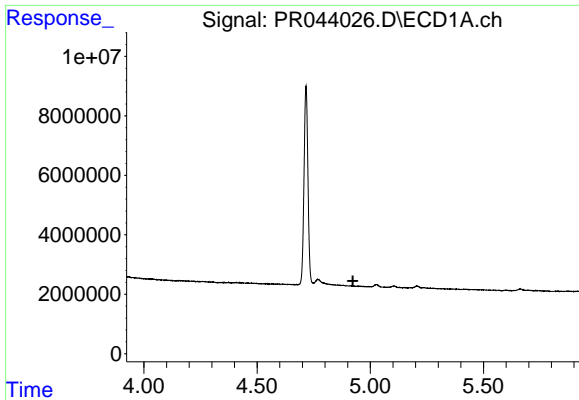
#6 AR-1016-4

R.T.: 0.000 min
 Exp R.T. : 6.077 min
 Response: 0
 Conc: N.D.



#6 AR-1016-4

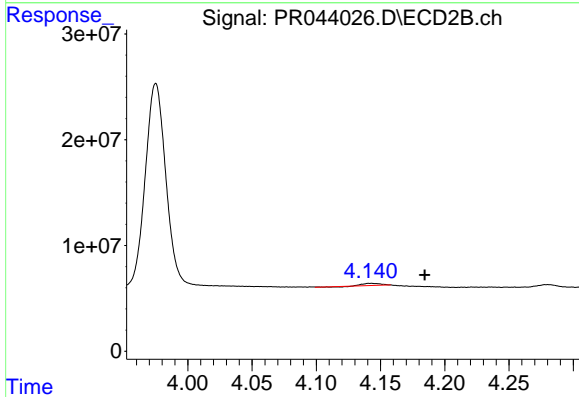
R.T.: 5.369 min
 Delta R.T.: 0.066 min
 Response: 5265911
 Conc: 29.17 ng/ml



#8 AR-1221-1

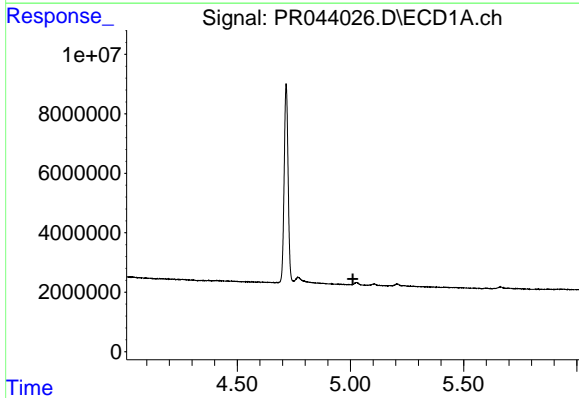
R.T.: 0.000 min
 Exp R.T. : 4.923 min
 Response: 0
 Conc: N.D.

Instrument :
 ECD_R
 ClientSampled :



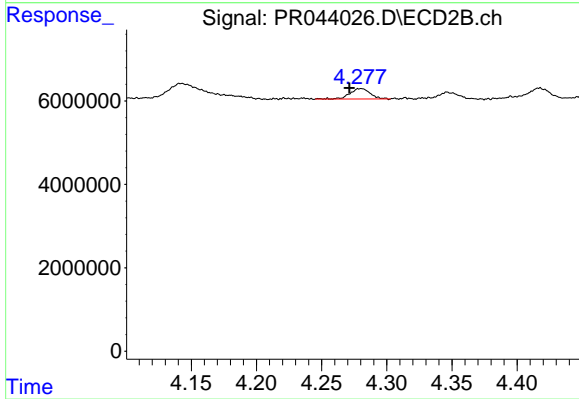
#8 AR-1221-1

R.T.: 4.142 min
 Delta R.T.: -0.042 min
 Response: 1684430
 Conc: 14.76 ng/ml



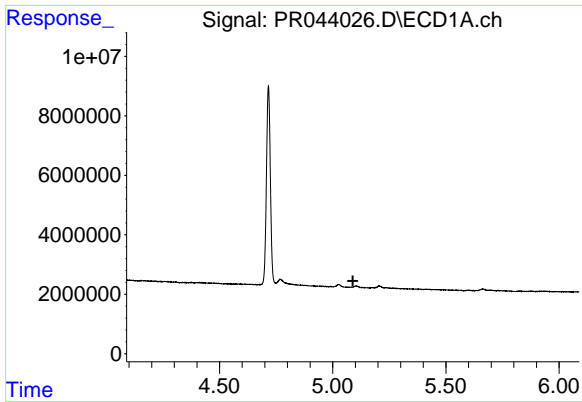
#9 AR-1221-2

R.T.: 0.000 min
 Exp R.T. : 5.011 min
 Response: 0
 Conc: N.D.



#9 AR-1221-2

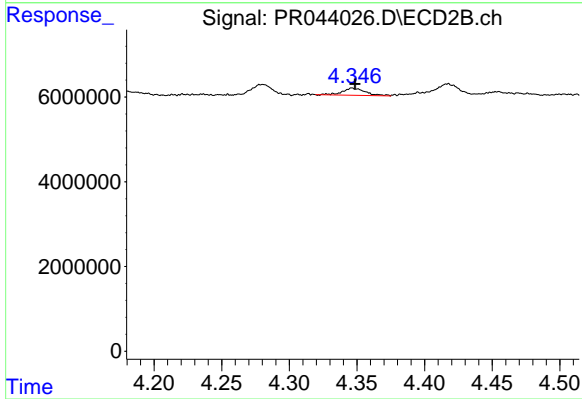
R.T.: 4.280 min
 Delta R.T.: 0.009 min
 Response: 2653469
 Conc: 32.52 ng/ml



#10 AR-1221-3

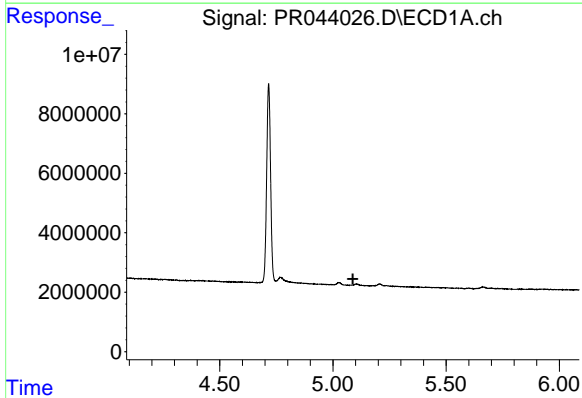
R.T.: 0.000 min
 Exp R.T. : 5.089 min
 Response: 0
 Conc: N.D.

Instrument :
 ECD_R
 ClientSampleId :



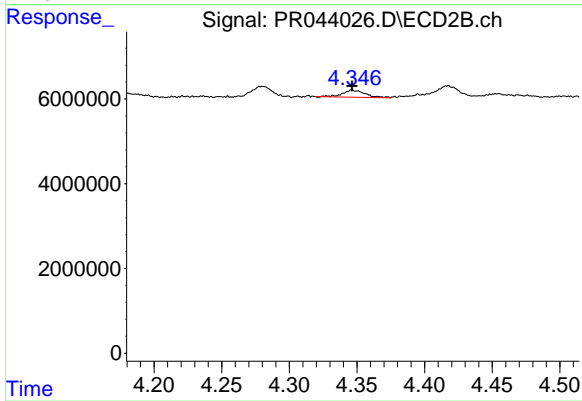
#10 AR-1221-3

R.T.: 4.346 min
 Delta R.T.: -0.002 min
 Response: 1935772
 Conc: 6.94 ng/ml



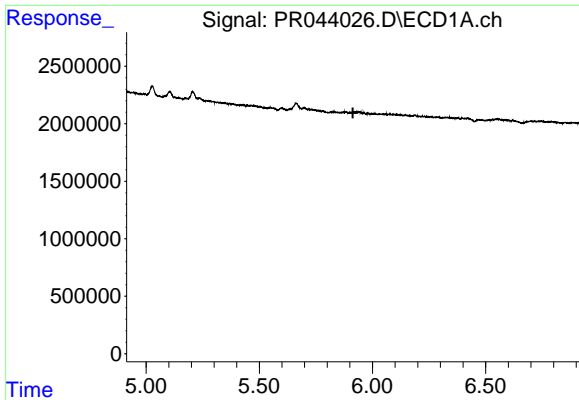
#11 AR-1232-1

R.T.: 0.000 min
 Exp R.T. : 5.088 min
 Response: 0
 Conc: N.D.



#11 AR-1232-1

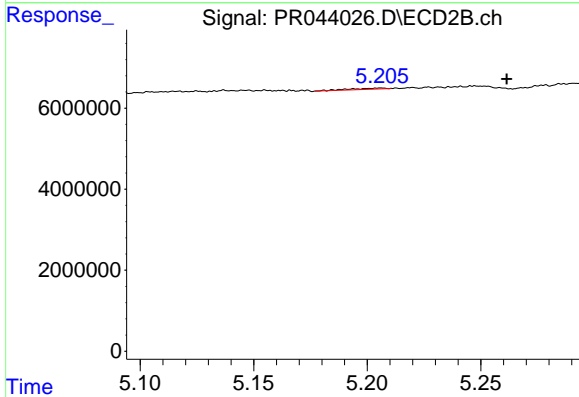
R.T.: 4.346 min
 Delta R.T.: 0.000 min
 Response: 1935772
 Conc: 8.39 ng/ml



#13 AR-1232-3

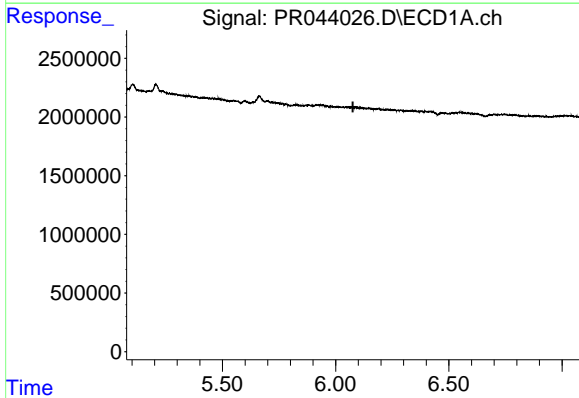
R.T.: 0.000 min
 Exp R.T. : 5.913 min
 Response: 0
 Conc: N.D.

Instrument :
 ECD_R
 ClientSampleId :



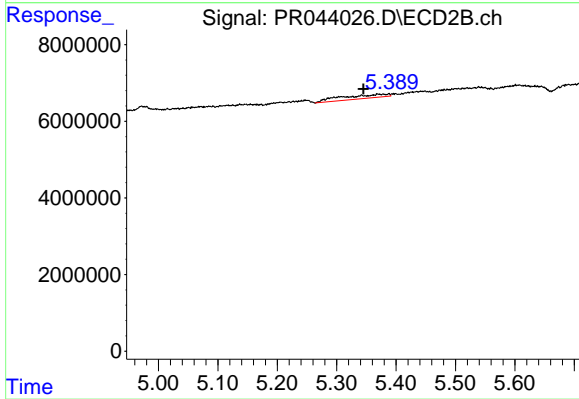
#13 AR-1232-3

R.T.: 5.206 min
 Delta R.T.: -0.056 min
 Response: 305507
 Conc: 3.22 ng/ml



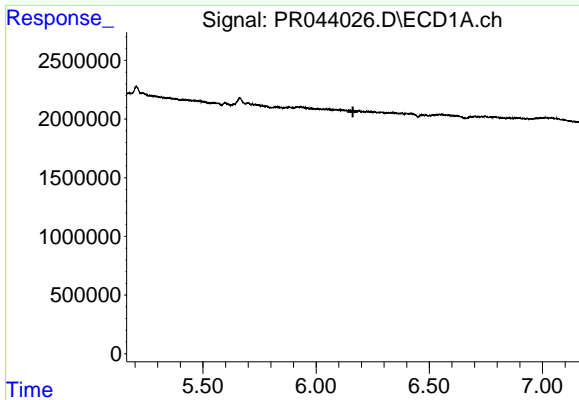
#14 AR-1232-4

R.T.: 0.000 min
 Exp R.T. : 6.076 min
 Response: 0
 Conc: N.D.



#14 AR-1232-4

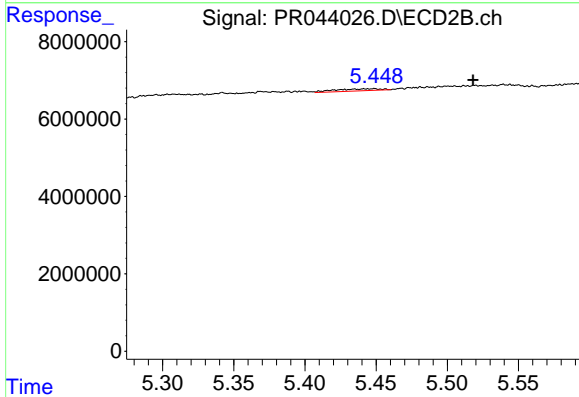
R.T.: 5.369 min
 Delta R.T.: 0.024 min
 Response: 5265911
 Conc: 60.81 ng/ml



#15 AR-1232-5

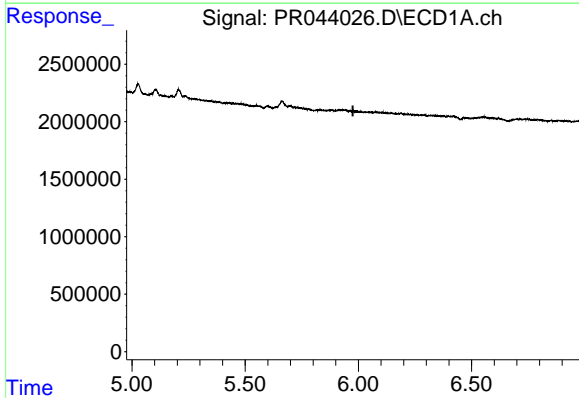
R.T.: 0.000 min
 Exp R.T. : 6.163 min
 Response: 0
 Conc: N.D.

Instrument :
 ECD_R
 ClientSampleId :



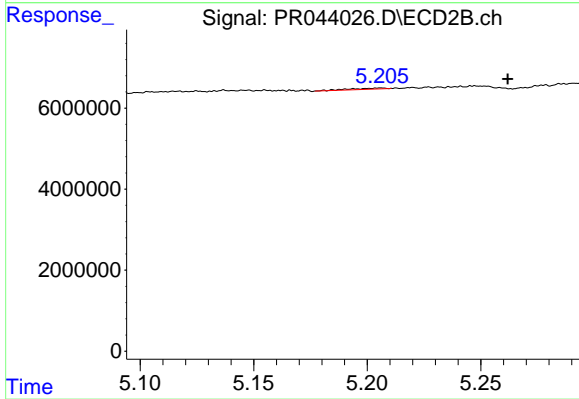
#15 AR-1232-5

R.T.: 5.449 min
 Delta R.T.: -0.070 min
 Response: 1205621
 Conc: 12.26 ng/ml



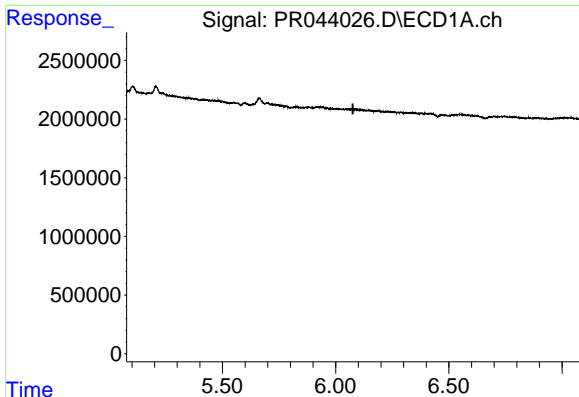
#18 AR-1242-3

R.T.: 0.000 min
 Exp R.T. : 5.976 min
 Response: 0
 Conc: N.D.



#18 AR-1242-3

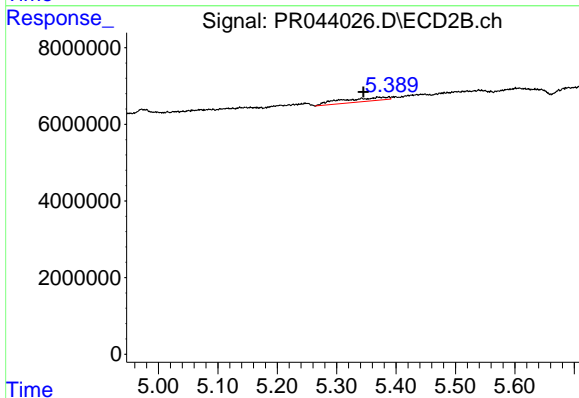
R.T.: 5.206 min
 Delta R.T.: -0.056 min
 Response: 305507
 Conc: 1.61 ng/ml



#19 AR-1242-4

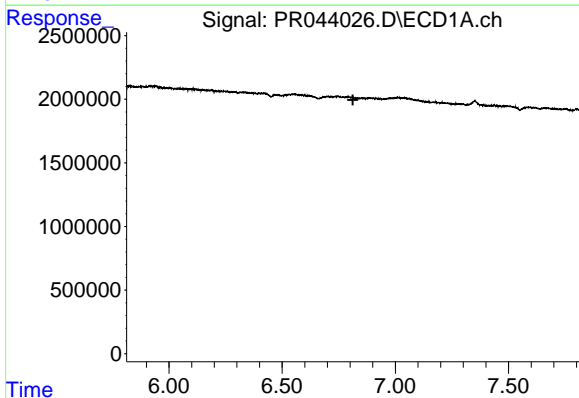
R.T.: 0.000 min
 Exp R.T. : 6.076 min
 Response: 0
 Conc: N.D.

Instrument :
 ECD_R
 ClientSampleId :



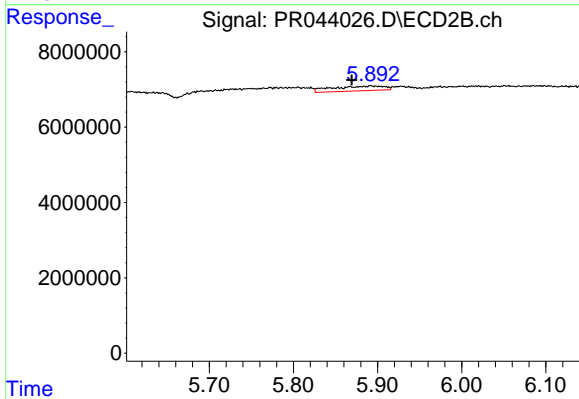
#19 AR-1242-4

R.T.: 5.369 min
 Delta R.T.: 0.024 min
 Response: 5265911
 Conc: 28.80 ng/ml



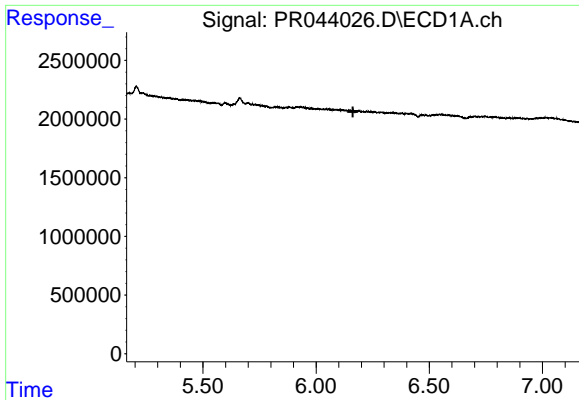
#20 AR-1242-5

R.T.: 0.000 min
 Exp R.T. : 6.813 min
 Response: 0
 Conc: N.D.



#20 AR-1242-5

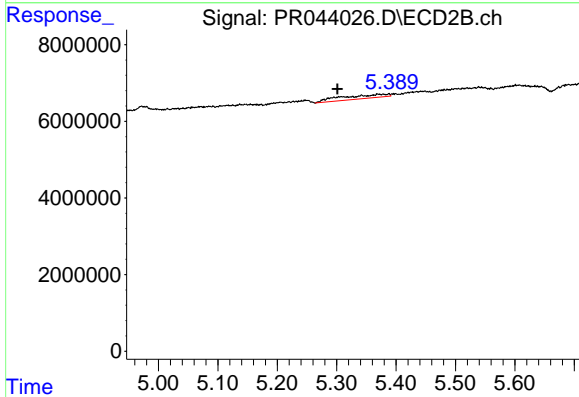
R.T.: 5.893 min
 Delta R.T.: 0.023 min
 Response: 5518078
 Conc: 18.60 ng/ml



#22 AR-1248-2

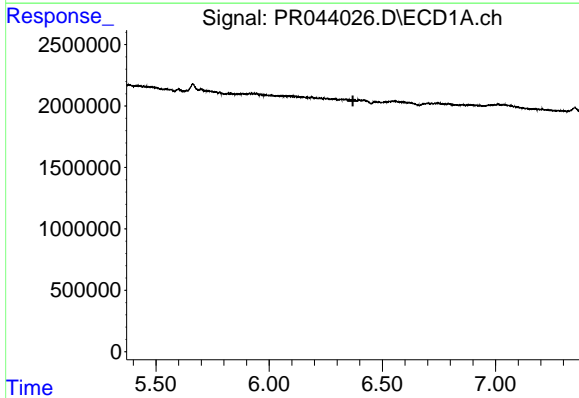
R.T.: 0.000 min
 Exp R.T. : 6.162 min
 Response: 0
 Conc: N.D.

Instrument :
 ECD_R
 ClientSampleId :



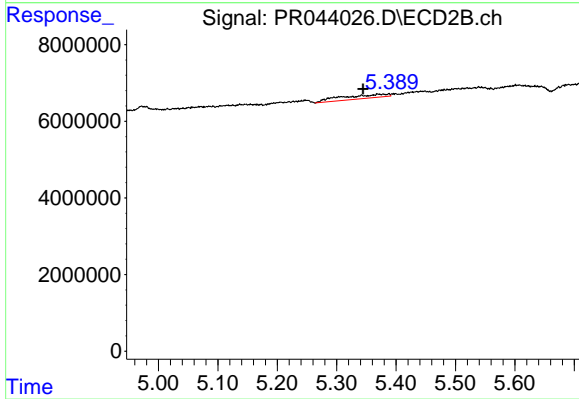
#22 AR-1248-2

R.T.: 5.369 min
 Delta R.T.: 0.068 min
 Response: 5265911
 Conc: 20.13 ng/ml



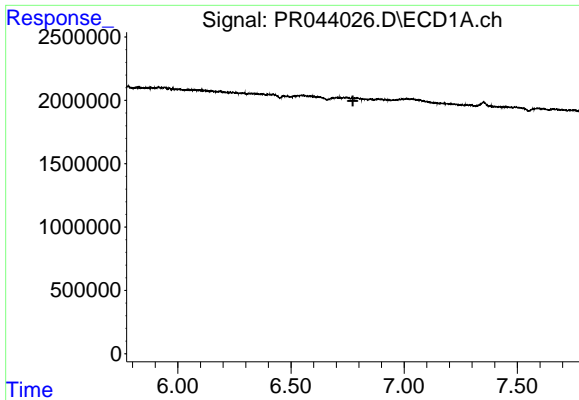
#23 AR-1248-3

R.T.: 0.000 min
 Exp R.T. : 6.370 min
 Response: 0
 Conc: N.D.



#23 AR-1248-3

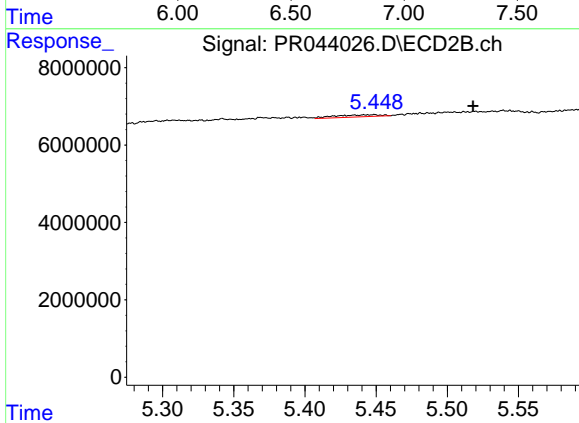
R.T.: 5.369 min
 Delta R.T.: 0.025 min
 Response: 5265911
 Conc: 19.89 ng/ml



#24 AR-1248-4

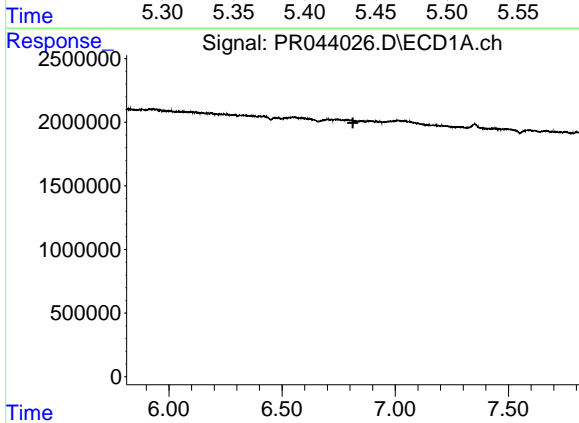
R.T.: 0.000 min
 Exp R.T. : 6.774 min
 Response: 0
 Conc: N.D.

Instrument :
 ECD_R
 ClientSampled :



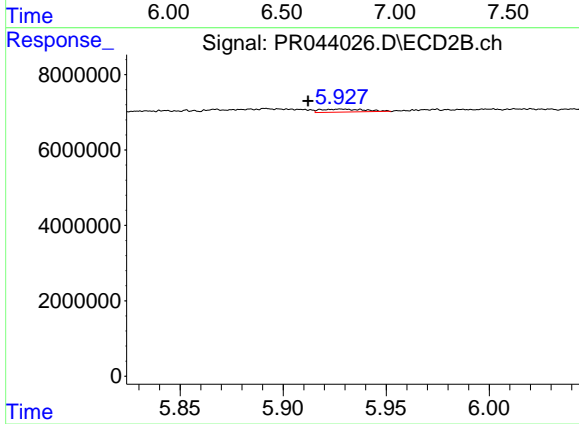
#24 AR-1248-4

R.T.: 5.449 min
 Delta R.T.: -0.070 min
 Response: 1205621
 Conc: 3.62 ng/ml



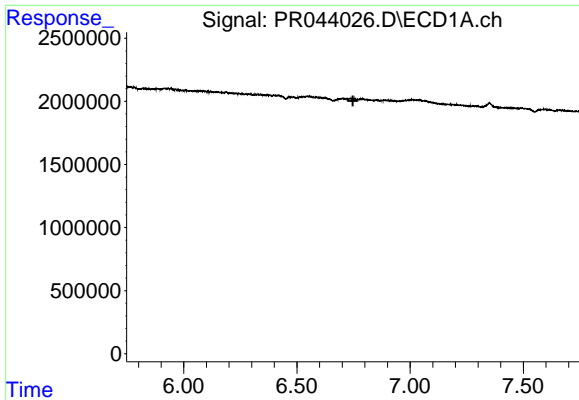
#25 AR-1248-5

R.T.: 0.000 min
 Exp R.T. : 6.813 min
 Response: 0
 Conc: N.D.



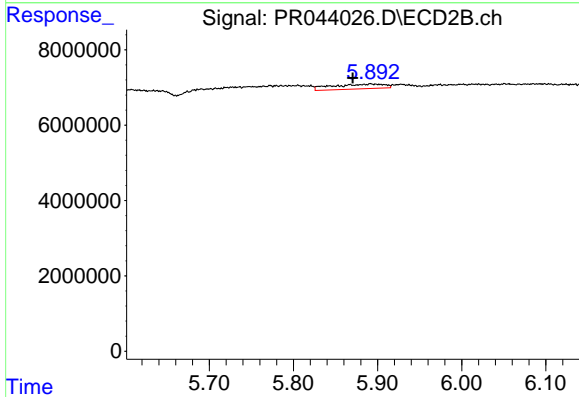
#25 AR-1248-5

R.T.: 5.928 min
 Delta R.T.: 0.016 min
 Response: 1164292
 Conc: 2.85 ng/ml

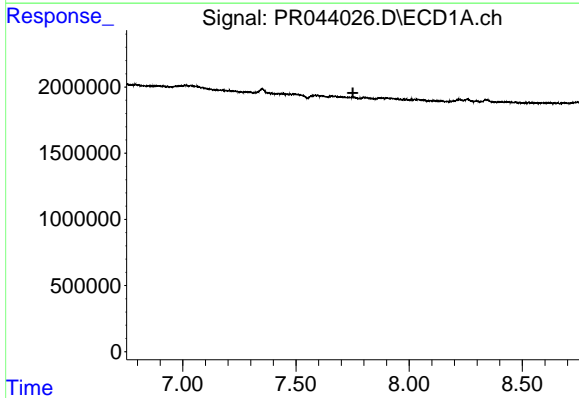


#26 AR-1254-1
 R.T.: 0.000 min
 Exp R.T.: 6.747 min
 Response: 0
 Conc: N.D.

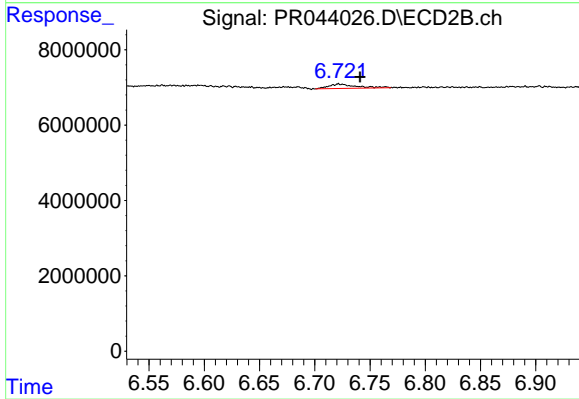
Instrument :
 ECD_R
 ClientSampled :



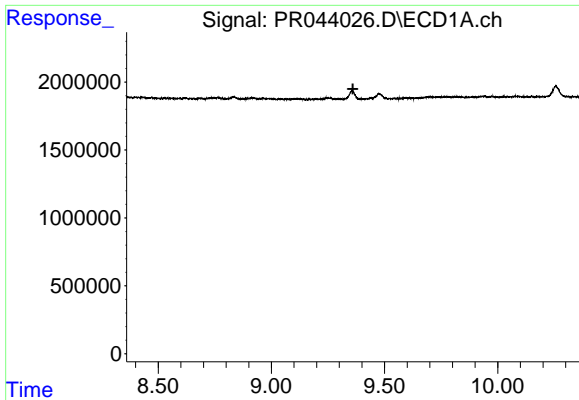
#26 AR-1254-1
 R.T.: 5.893 min
 Delta R.T.: 0.022 min
 Response: 5518078
 Conc: 9.16 ng/ml



#32 AR-1260-2
 R.T.: 0.000 min
 Exp R.T.: 7.752 min
 Response: 0
 Conc: N.D.



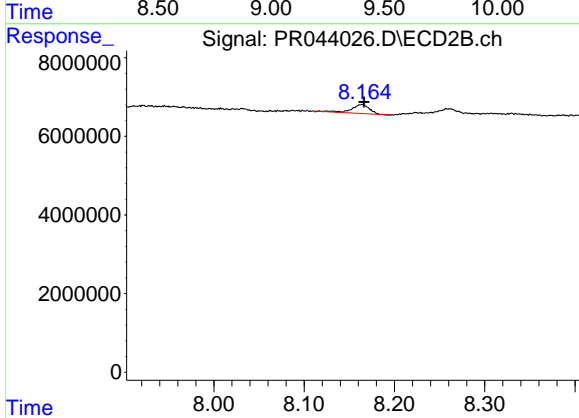
#32 AR-1260-2
 R.T.: 6.722 min
 Delta R.T.: -0.019 min
 Response: 2030115
 Conc: 2.53 ng/ml



#43 AR-1268-3

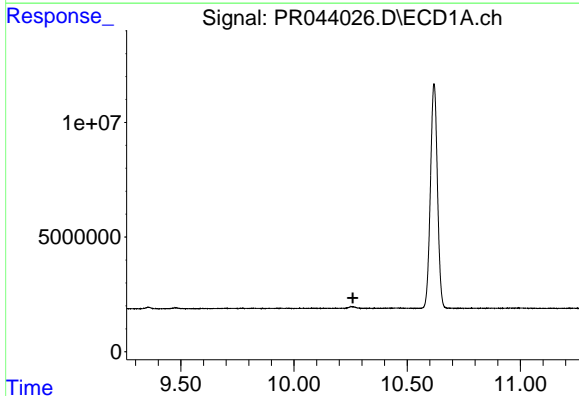
R.T.: 0.000 min
 Exp R.T. : 9.360 min
 Response: 0
 Conc: N.D.

Instrument :
 ECD_R
 ClientSampleId :



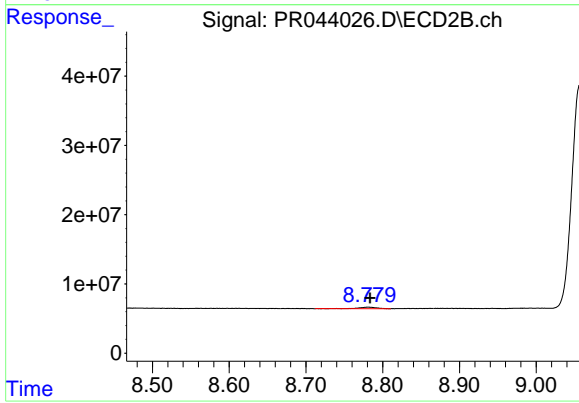
#43 AR-1268-3

R.T.: 8.164 min
 Delta R.T.: -0.003 min
 Response: 3181615
 Conc: 1.77 ng/ml



#45 AR-1268-5

R.T.: 0.000 min
 Exp R.T. : 10.260 min
 Response: 0
 Conc: N.D.



#45 AR-1268-5

R.T.: 8.781 min
 Delta R.T.: -0.002 min
 Response: 3320577
 Conc: 0.68 ng/ml