

Data Path : P:\HPCHEM1\ECD E\Data\PE100117\
 Data File : PE016826.D
 Signal(s) : Signal #1: ECD1A.CH Signal #2: ECD2B.CH
 Acq On : 1 Oct 2017 13:42
 Operator : UA/AJ
 Sample : HSTDICC200
 Misc :
 ALS Vial : 3 Sample Multiplier: 1

Instrument :
 ECD_E
 ClientSampleId :

Integration File signal 1: autoint1.e
 Integration File signal 2: autoint2.e
 Quant Time: Oct 01 17:06:37 2017
 Quant Method : P:\HPCHEM1\ECD_E\Method\PE100117.M
 Quant Title : 8080.M
 QLast Update : Sun Oct 01 17:07:06 2017
 Response via : Initial Calibration
 Integrator: ChemStation

Volume Inj. : 2 ul
 Signal #1 Phase : ZB-35-HT Inferno Signal #2 Phase: ZB-XLB-HT Inferno
 Signal #1 Info : 30M x 0.25mm x0.2 Signal #2 Info : 30M x 0.25mm x 0.25µm

Compound	RT#1	RT#2	Resp#1	Resp#2	ng/ml	ng/ml

System Monitoring Compounds						
4) S 2,4-DCAA	10.112	10.701	18091	31677	188.274	209.893
Target Compounds						
1) T Dalapon	2.849	3.032	44694	63231	189.000	195.562
2) T 3,5-DICHL...	8.827	9.066	30162	53792	192.176	200.843
3) T 4-Nitroph...	9.175	9.928	14222	26710	173.340	181.273
5) T DICAMBA	10.220	10.856	85035	130277	197.753	200.829
8) T DICHLORPROP	11.263	11.817	22721	41863	191.163	199.915
9) T 2,4-D	11.619	12.380	28241	46391	173.593	191.404
10) T Pentachlo...	12.636	13.042	268335	453519	187.804	195.385
11) T 2,4,5-TP ...	12.759	13.242	100254	185704	176.642	188.534
12) T 2,4,5-T	13.179	13.878	123719	213365	192.158	197.040
13) T 2,4-DB	13.817	14.464	21257	26153	234.812	201.866
14) T DINOSEB	13.964	14.294	103757	180310	193.236	203.552
15) T Picloram	14.776	16.115	204459	358015	189.610	187.435
16) T DCPA	14.972	15.621	176703	337666	205.425	203.591

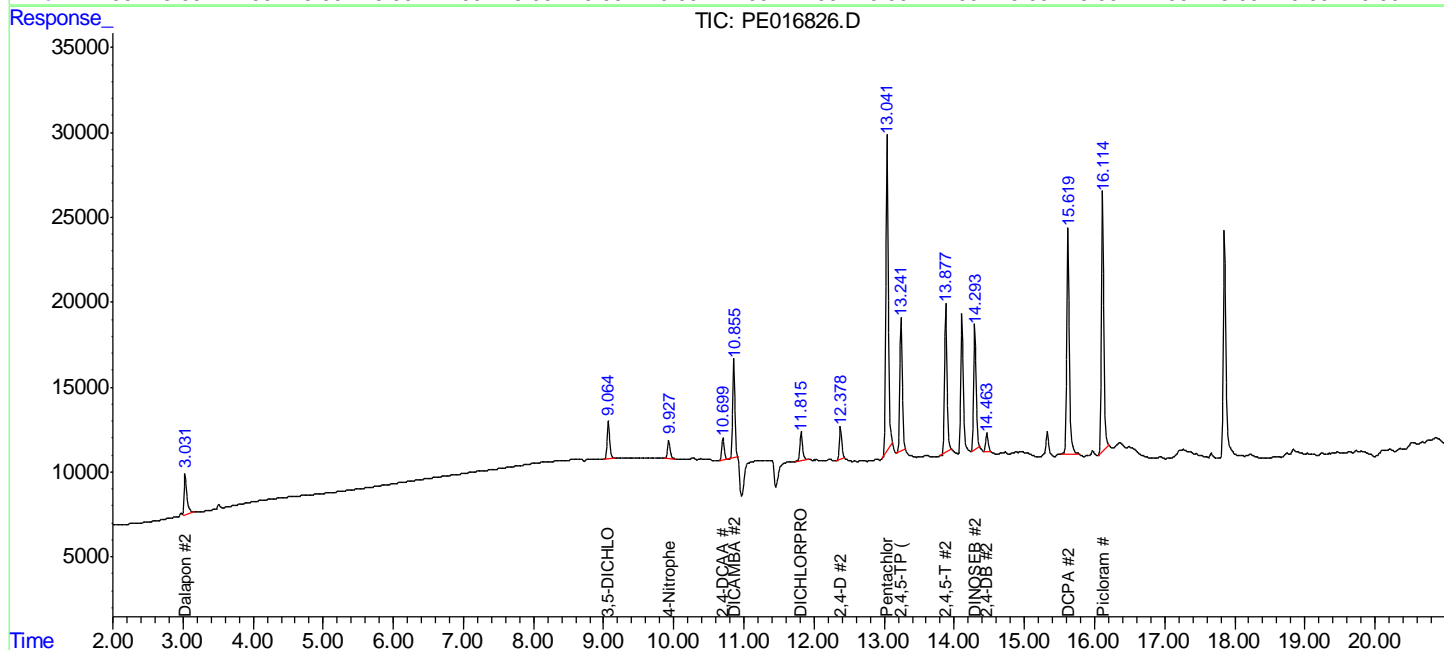
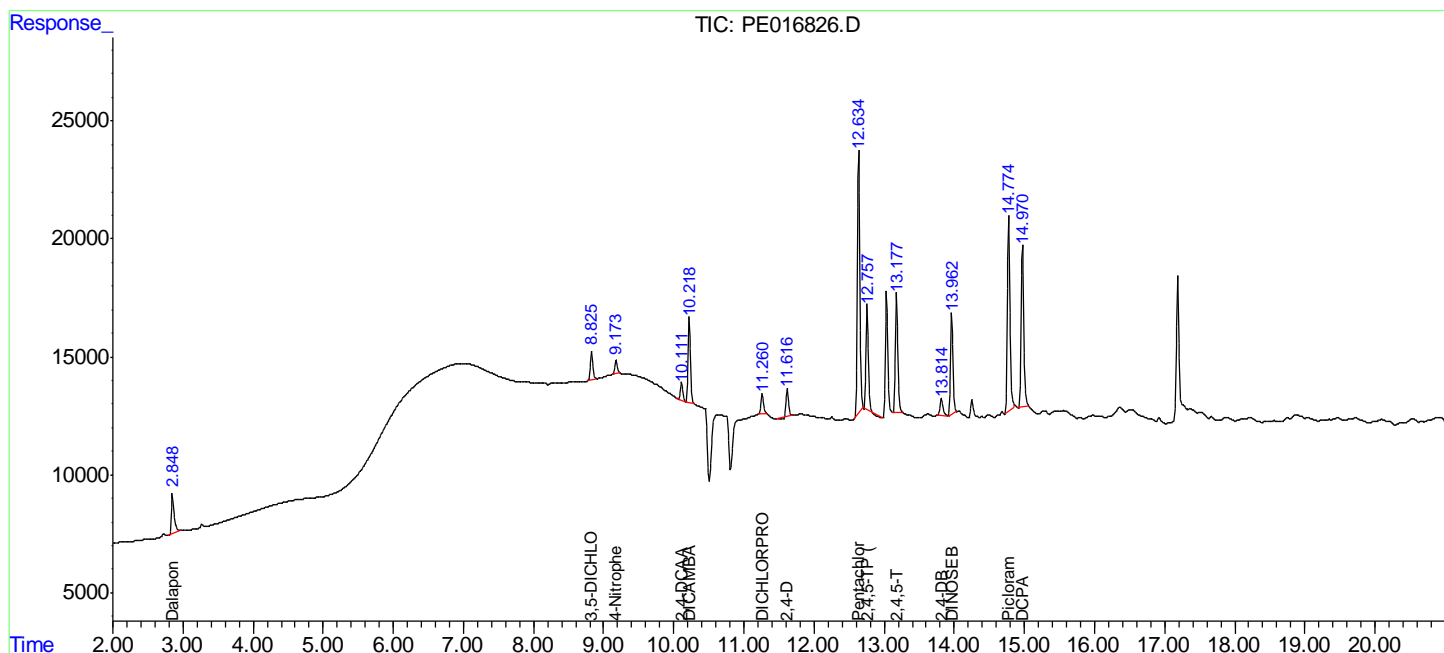
(f)=RT Delta > 1/2 Window (#)=Amounts differ by > 25% (m)=manual int.

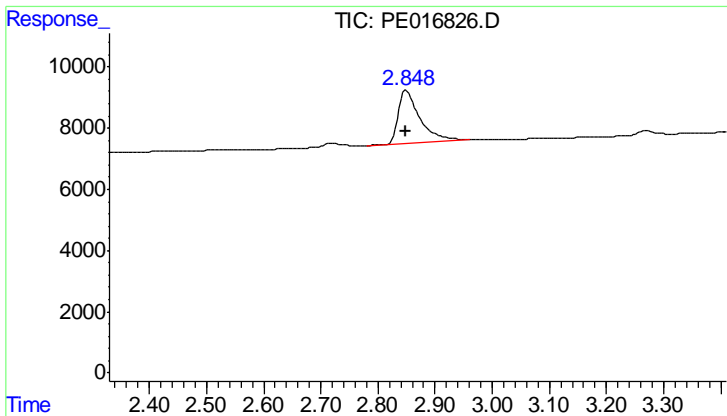
Data Path : P:\HPCHEM1\ECD E\Data\PE100117\
 Data File : PE016826.D
 Signal(s) : Signal #1: ECD1A.CH Signal #2: ECD2B.CH
 Acq On : 1 Oct 2017 13:42
 Operator : UA/AJ
 Sample : HSTDICC200
 Misc :
 ALS Vial : 3 Sample Multiplier: 1

Instrument :
 ECD_E
 ClientSampled :

Integration File signal 1: autoint1.e
 Integration File signal 2: autoint2.e
 Quant Time: Oct 01 17:06:37 2017
 Quant Method : P:\HPCHEM1\ECD_E\Method\PE100117.M
 Quant Title : 8080.M
 QLast Update : Sun Oct 01 17:07:06 2017
 Response via : Initial Calibration
 Integrator: ChemStation

Volume Inj. : 2 ul
 Signal #1 Phase : ZB-35-HT Inferno Signal #2 Phase: ZB-XLB-HT Inferno
 Signal #1 Info : 30M x 0.25mm x0.2 Signal #2 Info : 30M x 0.25mm x 0.25µm

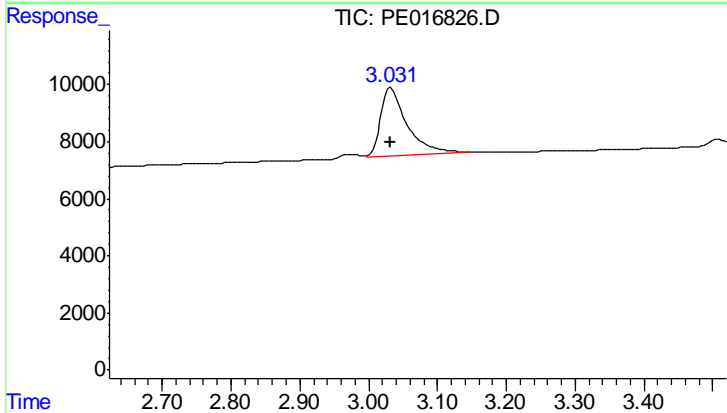




#1 Dalapon

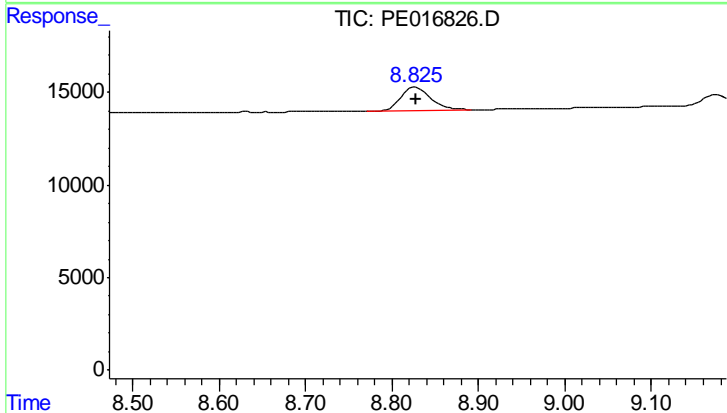
R.T.: 2.849 min
 Delta R.T.: 0.000 min
 Response: 44694
 Conc: 189.00 ng/ml

Instrument :
 ECD_E
 ClientSampled :



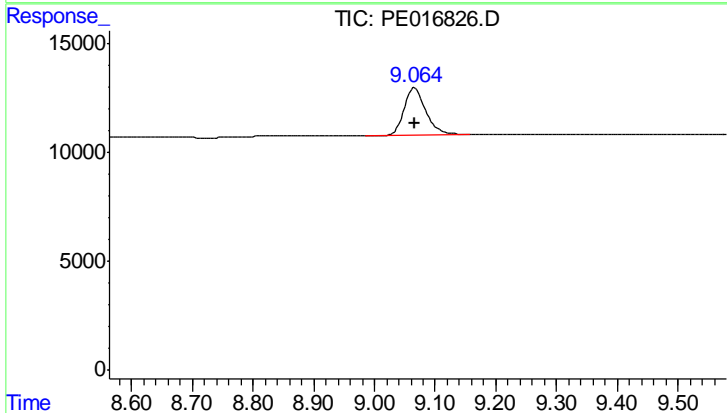
#1 Dalapon

R.T.: 3.032 min
 Delta R.T.: 0.000 min
 Response: 63231
 Conc: 195.56 ng/ml



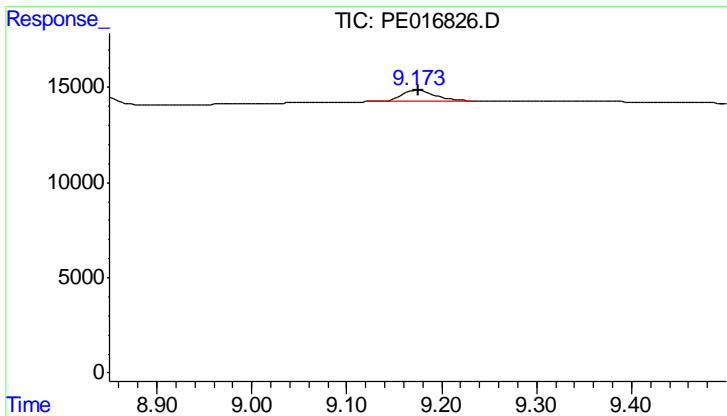
#2 3,5-DICHLOROBENZOIC ACID

R.T.: 8.827 min
 Delta R.T.: 0.000 min
 Response: 30162
 Conc: 192.18 ng/ml



#2 3,5-DICHLOROBENZOIC ACID

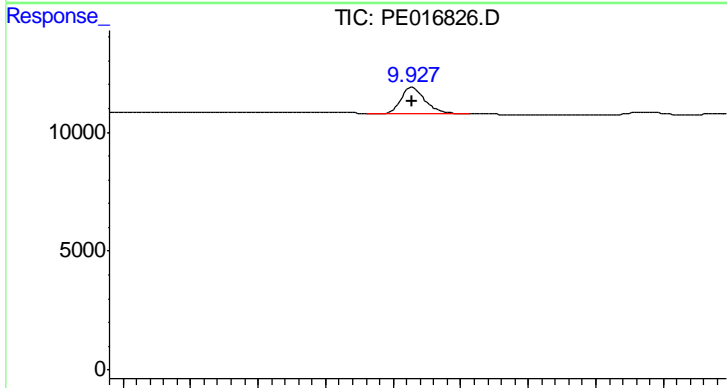
R.T.: 9.066 min
 Delta R.T.: 0.000 min
 Response: 53792
 Conc: 200.84 ng/ml



#3 4-Nitrophenol

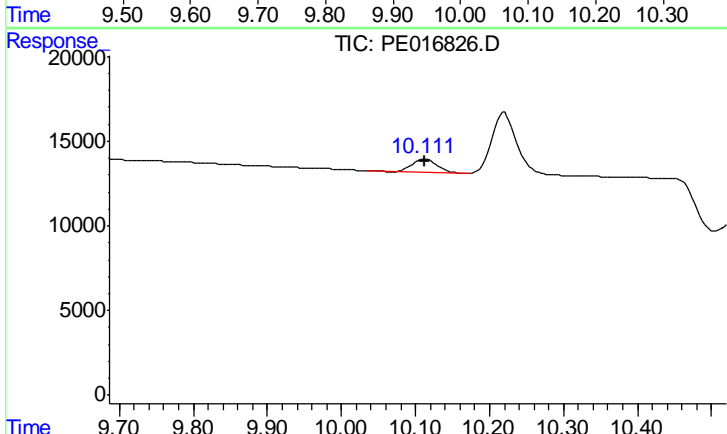
R.T.: 9.175 min
 Delta R.T.: 0.000 min
 Response: 14222
 Conc: 173.34 ng/ml

Instrument :
 ECD_E
 ClientSampled :



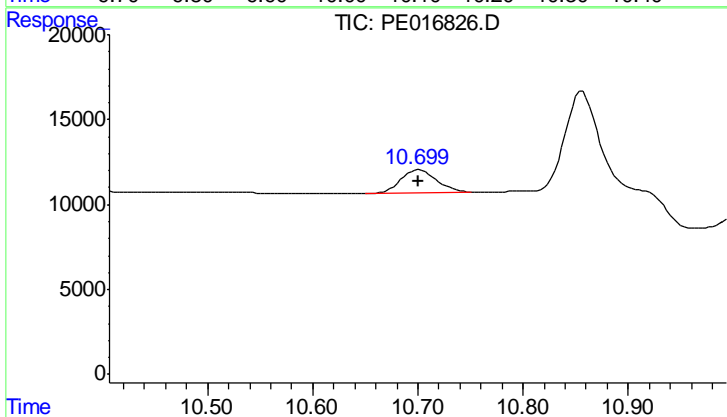
#3 4-Nitrophenol

R.T.: 9.928 min
 Delta R.T.: 0.000 min
 Response: 26710
 Conc: 181.27 ng/ml



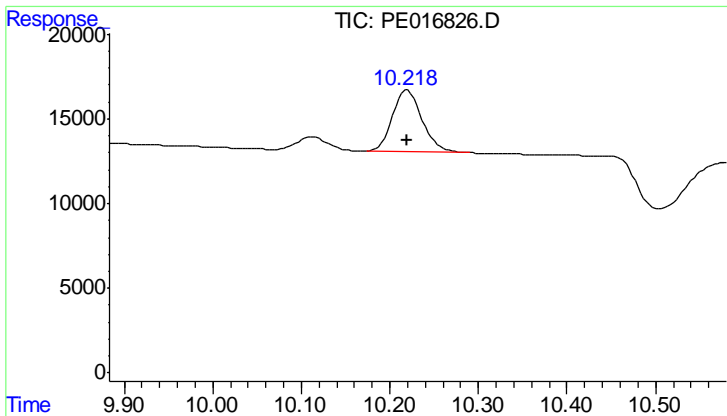
#4 2,4-DCAA

R.T.: 10.112 min
 Delta R.T.: 0.000 min
 Response: 18091
 Conc: 188.27 ng/ml



#4 2,4-DCAA

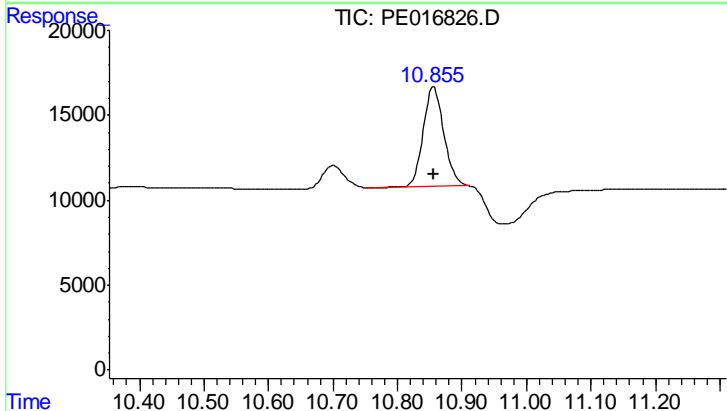
R.T.: 10.701 min
 Delta R.T.: 0.000 min
 Response: 31677
 Conc: 209.89 ng/ml



#5 DICAMBA

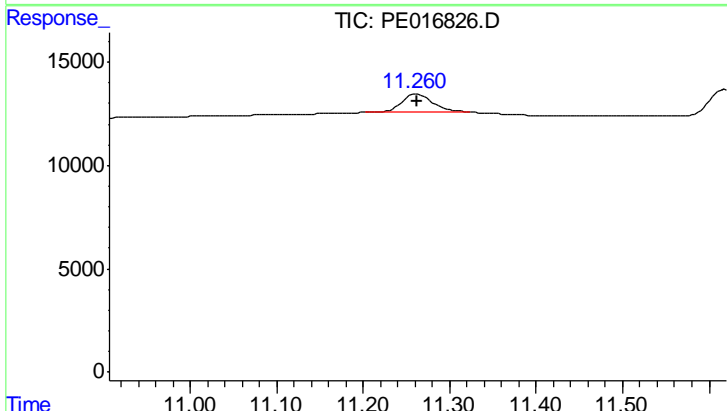
R.T.: 10.220 min
 Delta R.T.: 0.000 min
 Response: 85035
 Conc: 197.75 ng/ml

Instrument :
 ECD_E
 ClientSampleId :



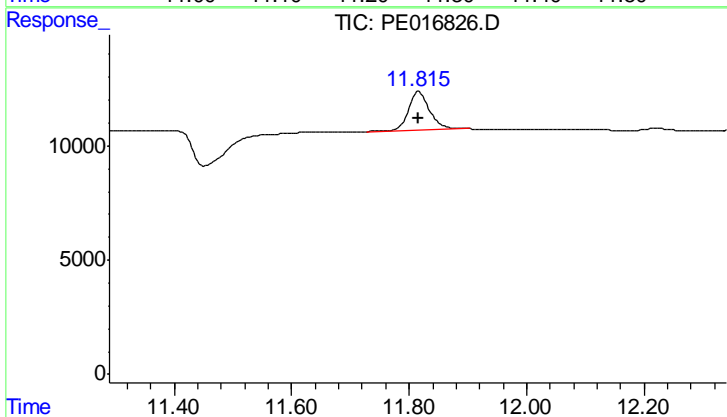
#5 DICAMBA

R.T.: 10.856 min
 Delta R.T.: 0.000 min
 Response: 130277
 Conc: 200.83 ng/ml



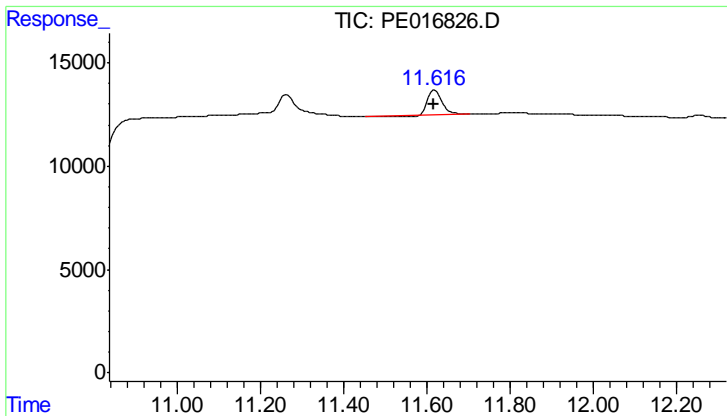
#8 DICHLORPROP

R.T.: 11.263 min
 Delta R.T.: 0.000 min
 Response: 22721
 Conc: 191.16 ng/ml



#8 DICHLORPROP

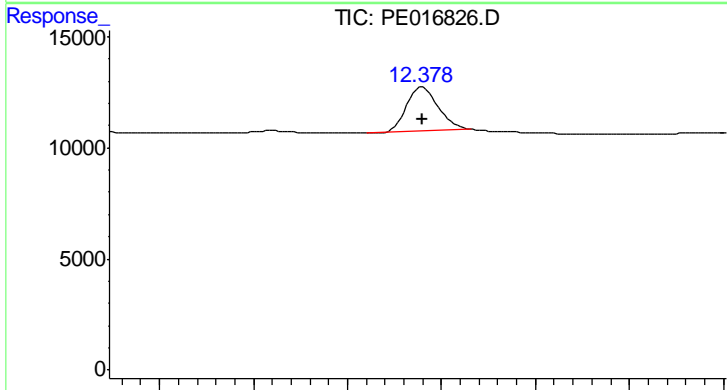
R.T.: 11.817 min
 Delta R.T.: 0.000 min
 Response: 41863
 Conc: 199.92 ng/ml



#9 2,4-D

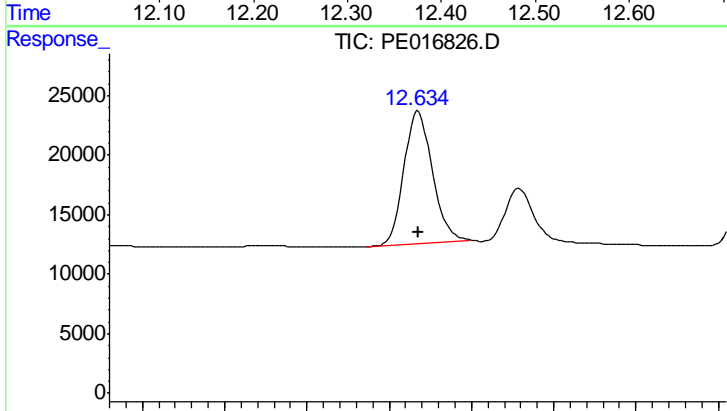
R.T.: 11.619 min
 Delta R.T.: 0.002 min
 Response: 28241
 Conc: 173.59 ng/ml

Instrument :
 ECD_E
 ClientSampled :



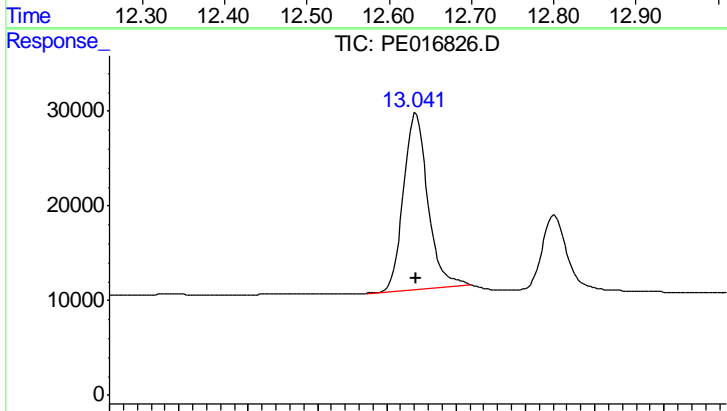
#9 2,4-D

R.T.: 12.380 min
 Delta R.T.: 0.000 min
 Response: 46391
 Conc: 191.40 ng/ml



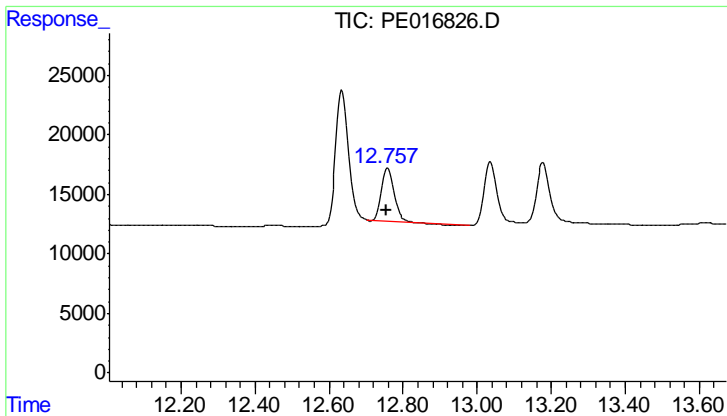
#10 Pentachlorophenol

R.T.: 12.636 min
 Delta R.T.: 0.000 min
 Response: 268335
 Conc: 187.80 ng/ml



#10 Pentachlorophenol

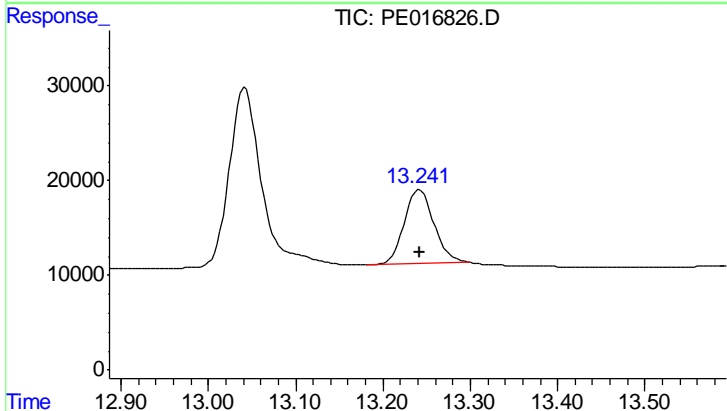
R.T.: 13.042 min
 Delta R.T.: 0.000 min
 Response: 453519
 Conc: 195.38 ng/ml



#11 2,4,5-TP (SILVEX)

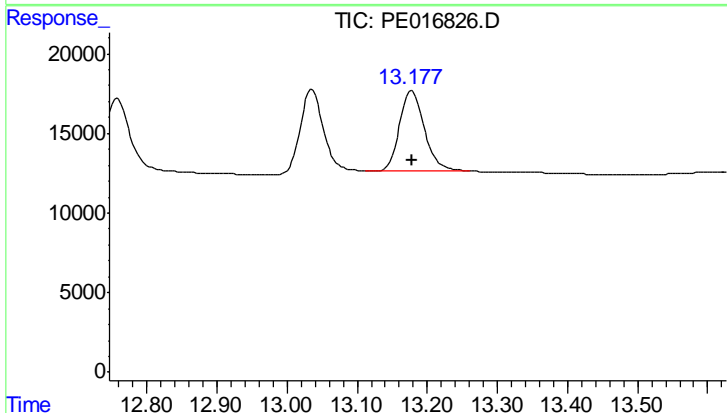
R.T.: 12.759 min
 Delta R.T.: 0.002 min
 Response: 100254
 Conc: 176.64 ng/ml

Instrument :
 ECD_E
 ClientSampled :



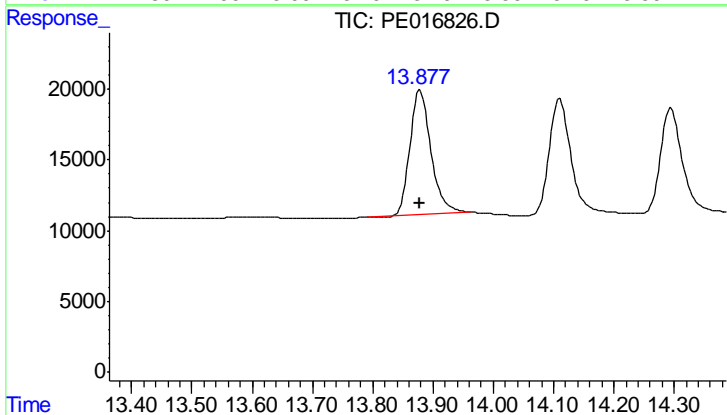
#11 2,4,5-TP (SILVEX)

R.T.: 13.242 min
 Delta R.T.: 0.000 min
 Response: 185704
 Conc: 188.53 ng/ml



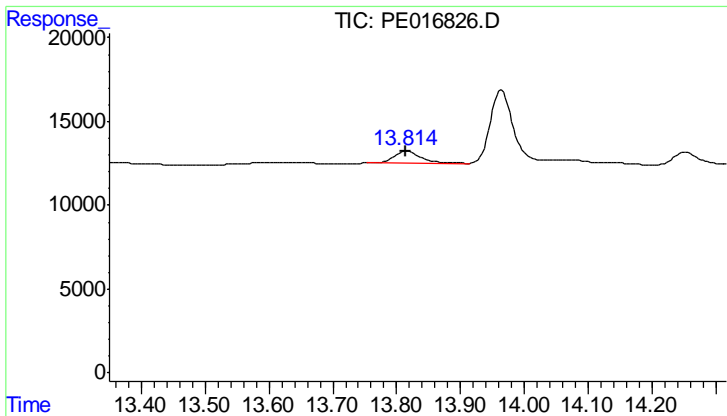
#12 2,4,5-T

R.T.: 13.179 min
 Delta R.T.: 0.000 min
 Response: 123719
 Conc: 192.16 ng/ml



#12 2,4,5-T

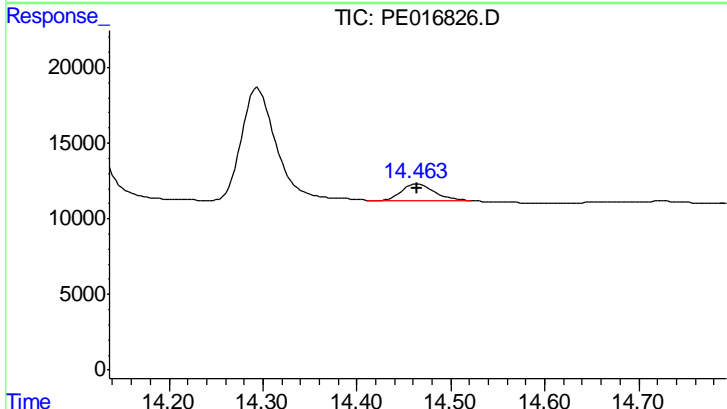
R.T.: 13.878 min
 Delta R.T.: 0.000 min
 Response: 213365
 Conc: 197.04 ng/ml



#13 2,4-DB

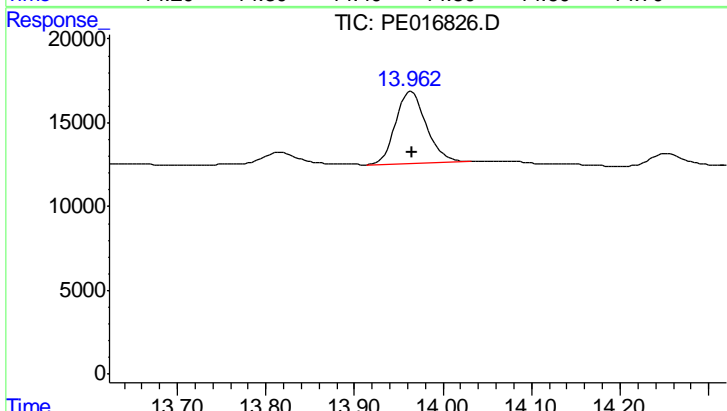
R.T.: 13.817 min
 Delta R.T.: 0.003 min
 Response: 21257
 Conc: 234.81 ng/ml

Instrument :
 ECD_E
 ClientSampleId :



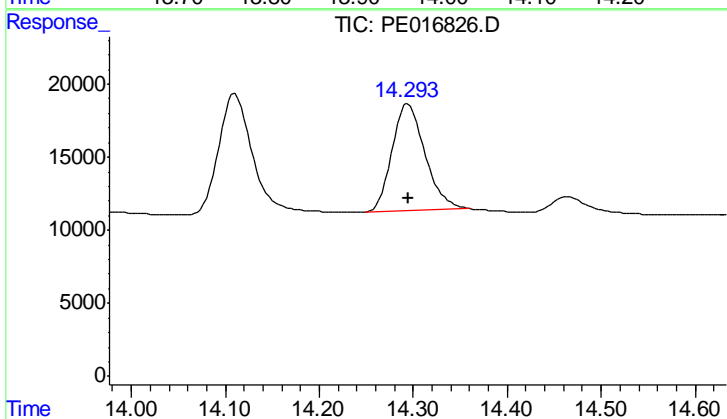
#13 2,4-DB

R.T.: 14.464 min
 Delta R.T.: 0.000 min
 Response: 26153
 Conc: 201.87 ng/ml



#14 DINOSEB

R.T.: 13.964 min
 Delta R.T.: 0.000 min
 Response: 103757
 Conc: 193.24 ng/ml



#14 DINOSEB

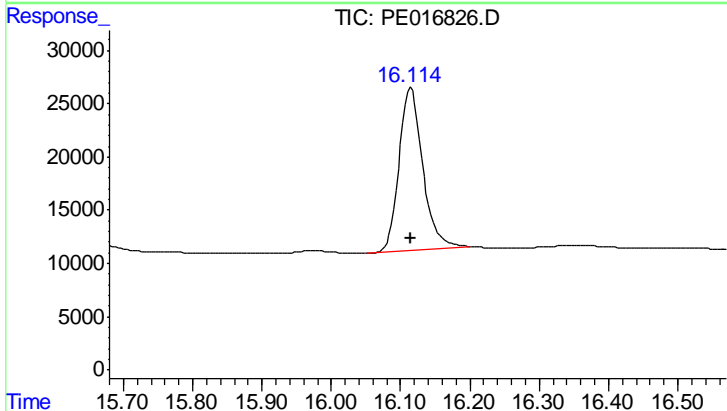
R.T.: 14.294 min
 Delta R.T.: 0.000 min
 Response: 180310
 Conc: 203.55 ng/ml



#15 Picloram

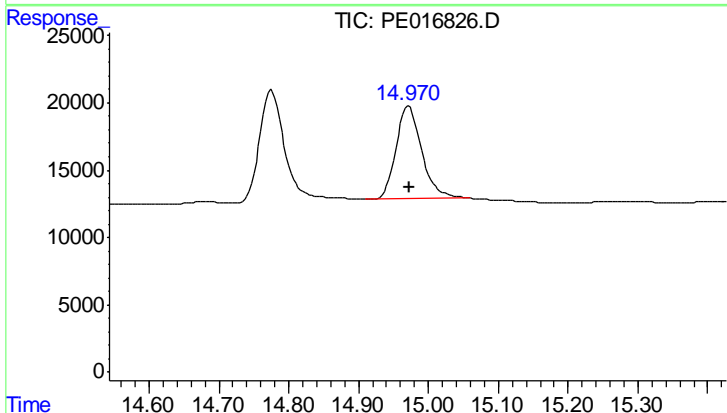
R.T.: 14.776 min
 Delta R.T.: 0.000 min
 Response: 204459
 Conc: 189.61 ng/ml

Instrument :
 ECD_E
 ClientSampleId :



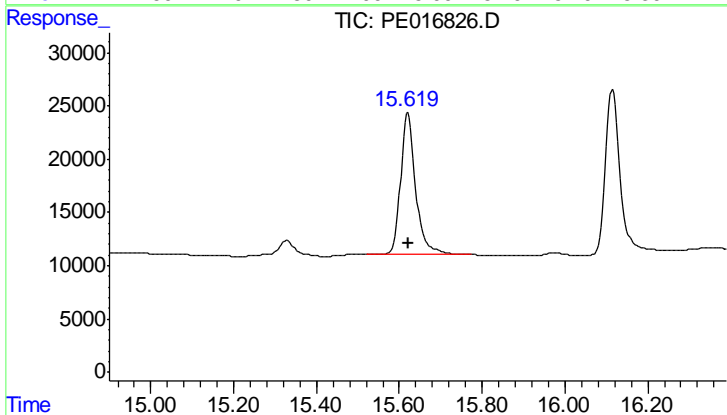
#15 Picloram

R.T.: 16.115 min
 Delta R.T.: 0.000 min
 Response: 358015
 Conc: 187.44 ng/ml



#16 DCPA

R.T.: 14.972 min
 Delta R.T.: 0.000 min
 Response: 176703
 Conc: 205.42 ng/ml



#16 DCPA

R.T.: 15.621 min
 Delta R.T.: 0.000 min
 Response: 337666
 Conc: 203.59 ng/ml