

Data Path : P:\HPCHEM1\ECD_E\Data\PE100117\
 Data File : PE016836.D
 Signal(s) : Signal #1: ECD1A.CH Signal #2: ECD2B.CH
 Acq On : 1 Oct 2017 19:51
 Operator : UA/AJ
 Sample : I5304-03MSD
 Misc :
 ALS Vial : 13 Sample Multiplier: 1

Instrument :
 ECD_E
ClientSampleId :
 SASP2P-EPE-116-4(30-40)MSD

Integration File signal 1: autoint1.e
 Integration File signal 2: autoint2.e
 Quant Time: Oct 04 11:58:25 2017
 Quant Method : P:\HPCHEM1\ECD_E\Method\PE100117.M
 Quant Title : 8080.M
 QLast Update : Wed Oct 04 09:28:38 2017
 Response via : Initial Calibration
 Integrator: ChemStation

Volume Inj. : 2 µl
 Signal #1 Phase : ZB-35-HT Inferno Signal #2 Phase: ZB-XLB-HT Inferno
 Signal #1 Info : 30M x 0.25mm x0.2 Signal #2 Info : 30M x 0.25mm x 0.25µm

Compound	RT#1	RT#2	Resp#1	Resp#2	ng/ml	ng/ml

System Monitoring Compounds						
4) S 2,4-DCAA	10.068	0.000	31127	0	323.939	N.D. #
Target Compounds						
1) T Dalapon	2.822	3.002	51942	73709	219.653	227.970
2) T 3,5-DICHL...	0.000	9.020	0	104830	N.D.	391.408 #
5) T DICAMBA	10.175	0.000	108490	0	252.299	N.D. #
8) T DICHLORPROP	0.000	11.770	0	54673	N.D.	261.092 #
9) T 2,4-D	11.572	0.000	41696	0	257.553	N.D. #
10) T Pentachlo...	12.584	12.988	389794	661445	272.811	284.964
11) T 2,4,5-TP ...	12.708	13.190	169832	261998	298.822	265.991
12) T 2,4,5-T	0.000	13.823	0	272100	N.D.	251.281 #
14) T DINOSEB	13.909	14.240	83231	225394	155.009	254.447 #
15) T Picloram	14.717	0.000	187625	0	173.998	N.D. #
16) T DCPA	0.000	15.561	0	304792	N.D.	183.770 #

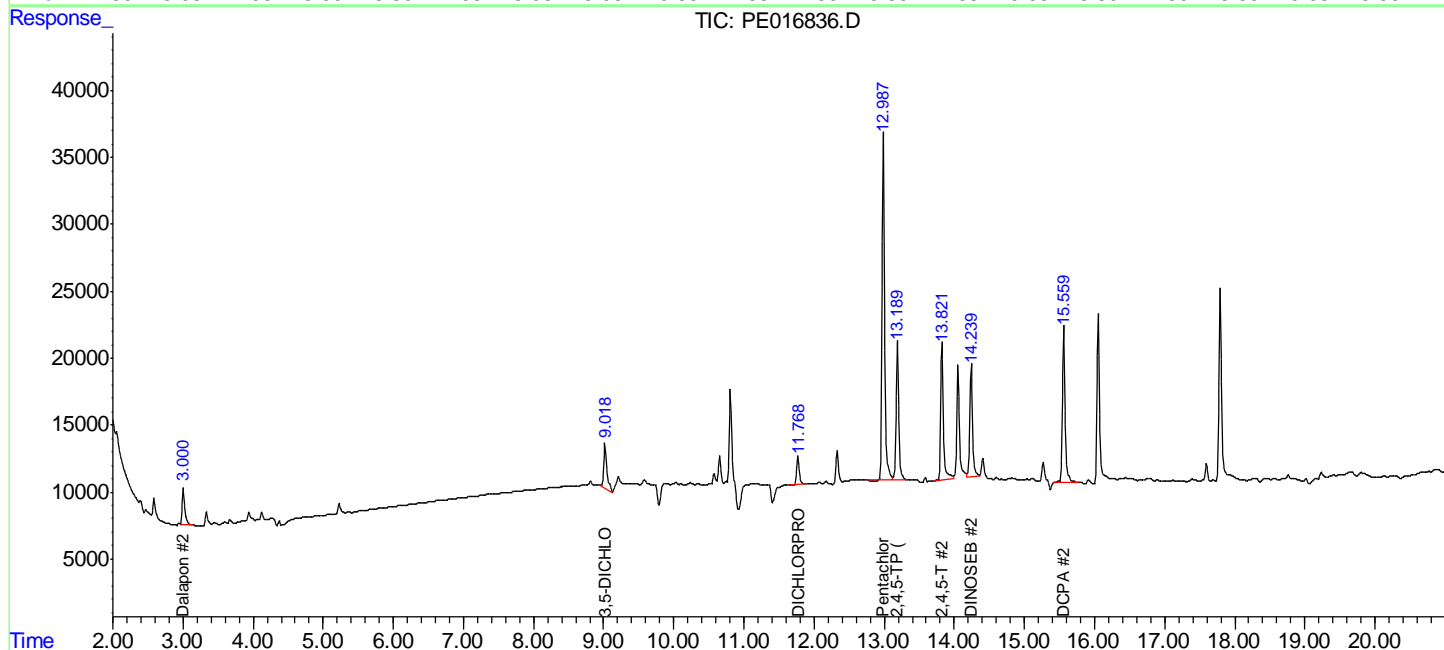
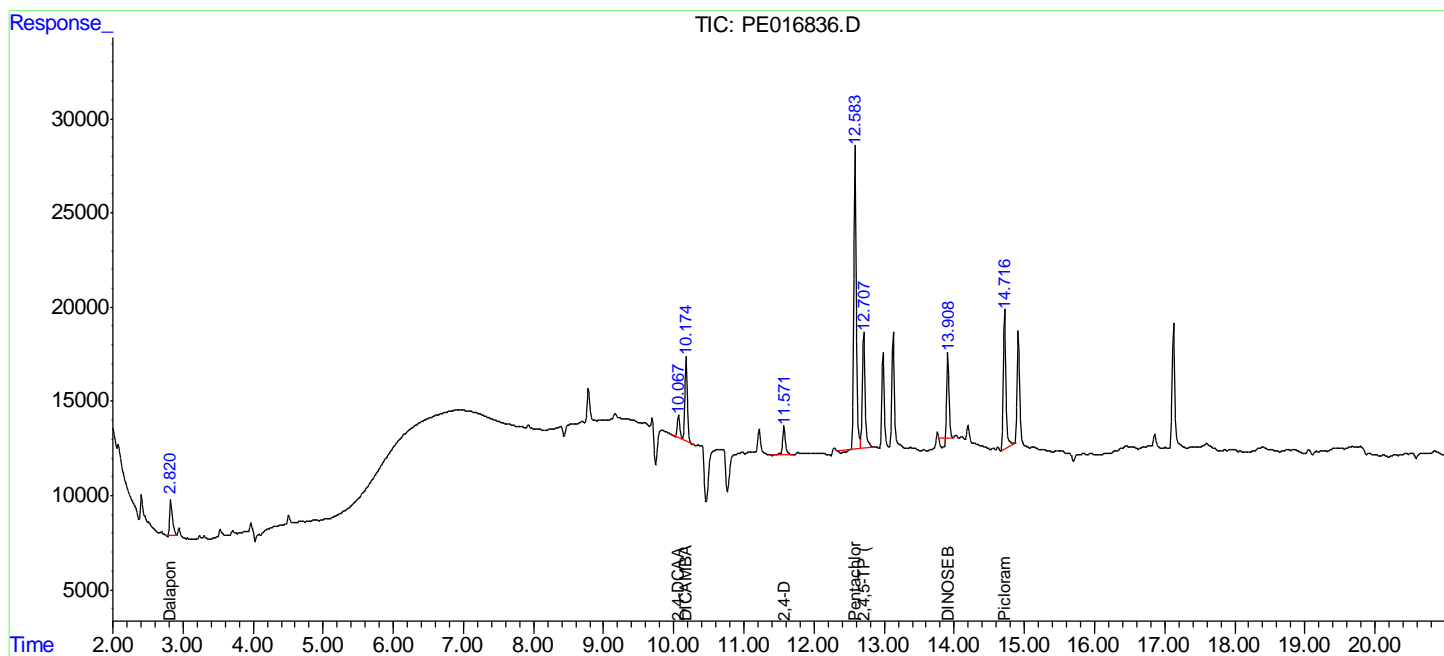
(f)=RT Delta > 1/2 Window (#)=Amounts differ by > 25% (m)=manual int.

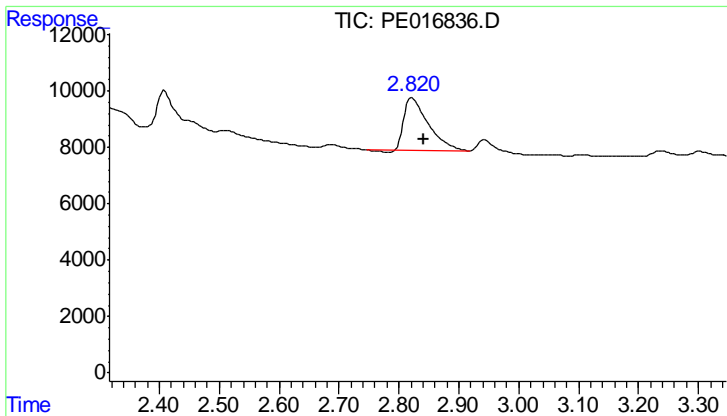
Data Path : P:\HPCHEM1\ECD_E\Data\PE100117\
 Data File : PE016836.D
 Signal(s) : Signal #1: ECD1A.CH Signal #2: ECD2B.CH
 Acq On : 1 Oct 2017 19:51
 Operator : UA/AJ
 Sample : I5304-03MSD
 Misc :
 ALS Vial : 13 Sample Multiplier: 1

Instrument :
 ECD_E
ClientSampleId :
 SASP2P-EPE-116-4(30-40)MSD

Integration File signal 1: autoint1.e
 Integration File signal 2: autoint2.e
 Quant Time: Oct 04 11:58:25 2017
 Quant Method : P:\HPCHEM1\ECD_E\Method\PE100117.M
 Quant Title : 8080.M
 QLast Update : Wed Oct 04 09:28:38 2017
 Response via : Initial Calibration
 Integrator: ChemStation

Volume Inj. : 2 µl
 Signal #1 Phase : ZB-35-HT Inferno Signal #2 Phase: ZB-XLB-HT Infernon
 Signal #1 Info : 30M x 0.25mm x0.2 Signal #2 Info : 30M x 0.25mm x 0.25µm

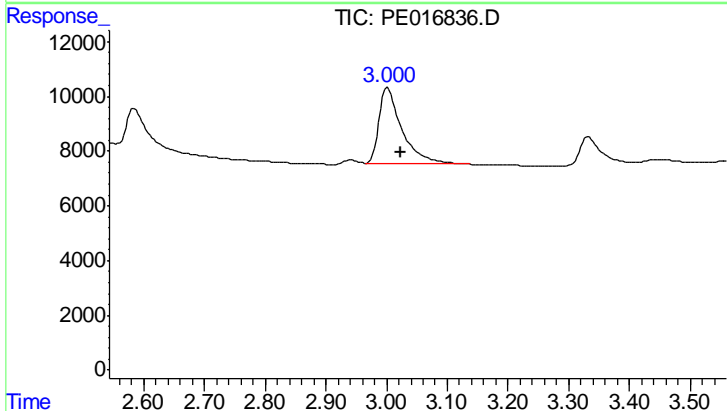




#1 Dalapon

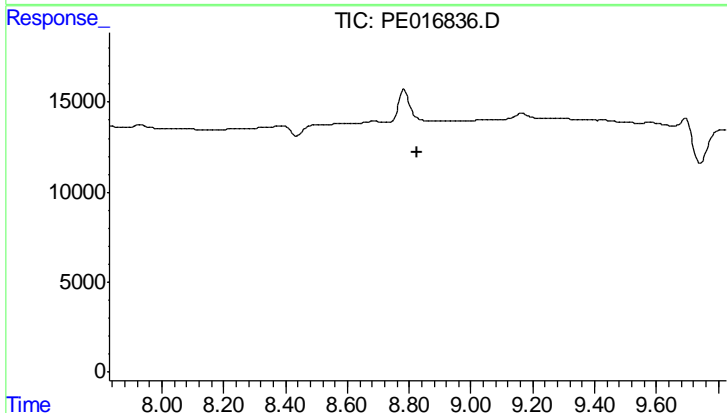
R.T.: 2.822 min
 Delta R.T.: -0.019 min
 Response: 51942
 Conc: 219.65 ng/ml

Instrument :
 ECD_E
 ClientSampleId :
 SASP2P-EPE-116-4(30-40)MSD



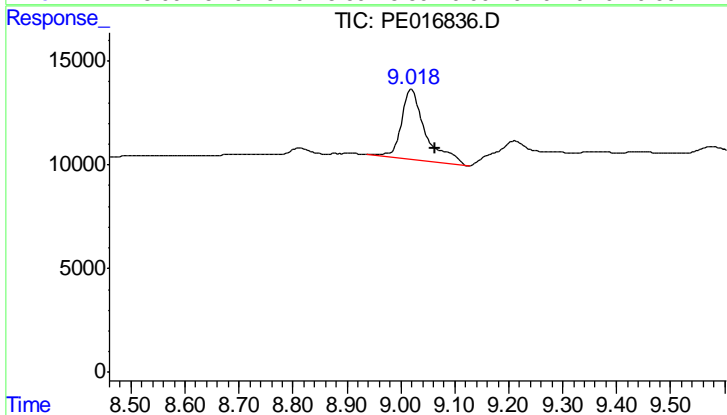
#1 Dalapon

R.T.: 3.002 min
 Delta R.T.: -0.021 min
 Response: 73709
 Conc: 227.97 ng/ml



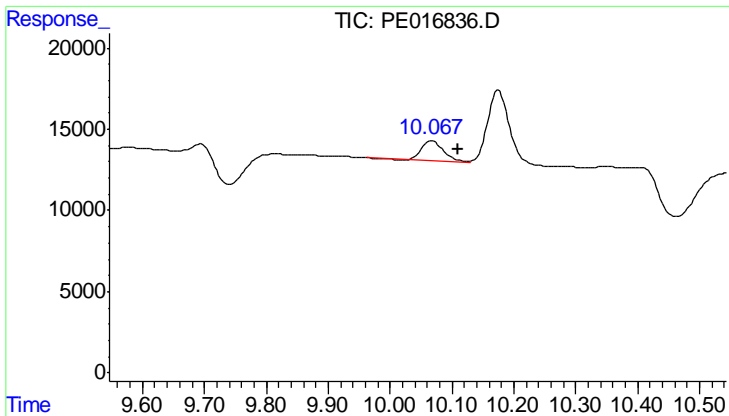
#2 3,5-DICHLOROBENZOIC ACID

R.T.: 0.000 min
 Exp R.T. : 8.827 min
 Response: 0
 Conc: N.D.



#2 3,5-DICHLOROBENZOIC ACID

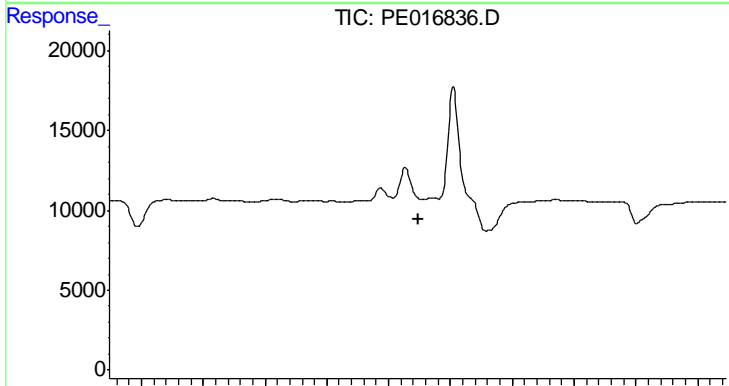
R.T.: 9.020 min
 Delta R.T.: -0.044 min
 Response: 104830
 Conc: 391.41 ng/ml



#4 2,4-DCAA

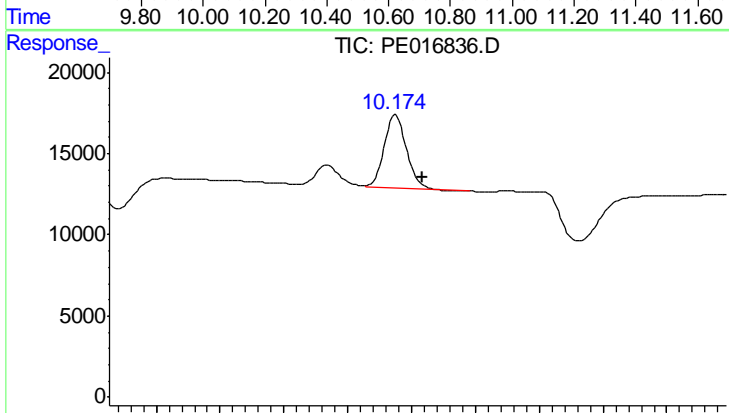
R.T.: 10.068 min
 Delta R.T.: -0.043 min
 Response: 31127
 Conc: 323.94 ng/ml

Instrument :
 ECD_E
 ClientSampleId :
 SASP2P-EPE-116-4(30-40)MSD



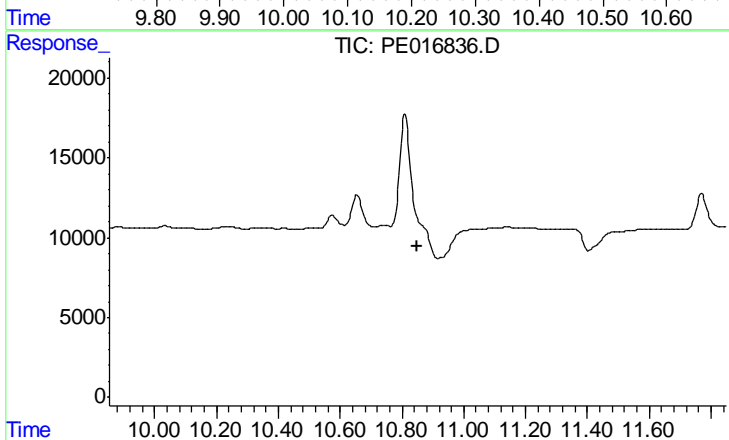
#4 2,4-DCAA

R.T.: 0.000 min
 Exp R.T. : 10.696 min
 Response: 0
 Conc: N.D.



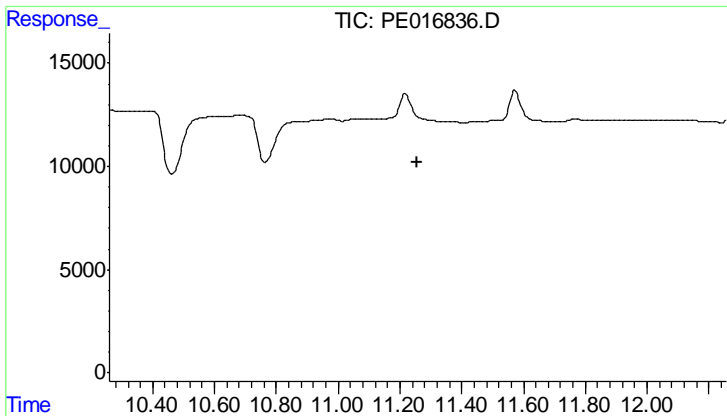
#5 DICAMBA

R.T.: 10.175 min
 Delta R.T.: -0.042 min
 Response: 108490
 Conc: 252.30 ng/ml



#5 DICAMBA

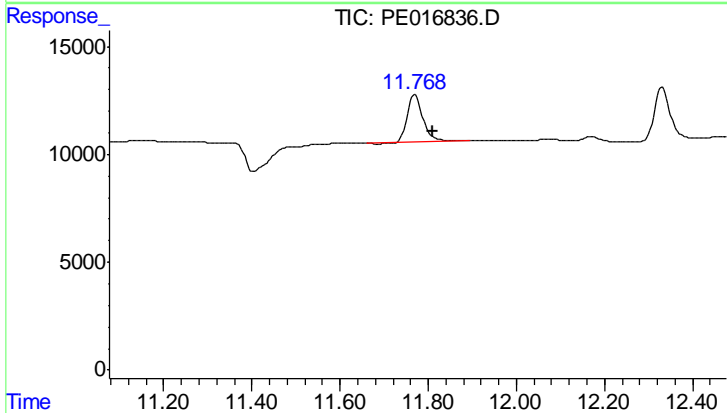
R.T.: 0.000 min
 Exp R.T. : 10.851 min
 Response: 0
 Conc: N.D.



#8 DICHLORPROP

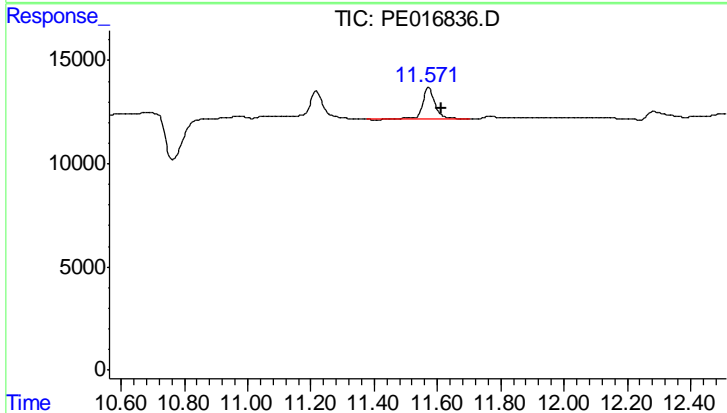
R.T.: 0.000 min
 Exp R.T.: 11.258 min
 Response: 0
 Conc: N.D.

Instrument :
 ECD_E
 ClientSampleId :
 SASP2P-EPE-116-4(30-40)MSD



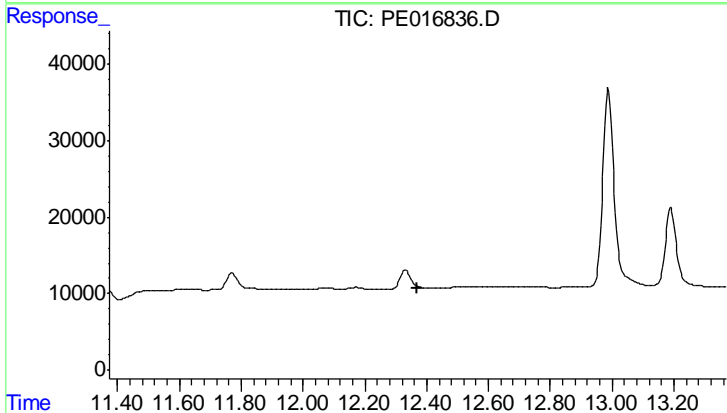
#8 DICHLORPROP

R.T.: 11.770 min
 Delta R.T.: -0.040 min
 Response: 54673
 Conc: 261.09 ng/ml



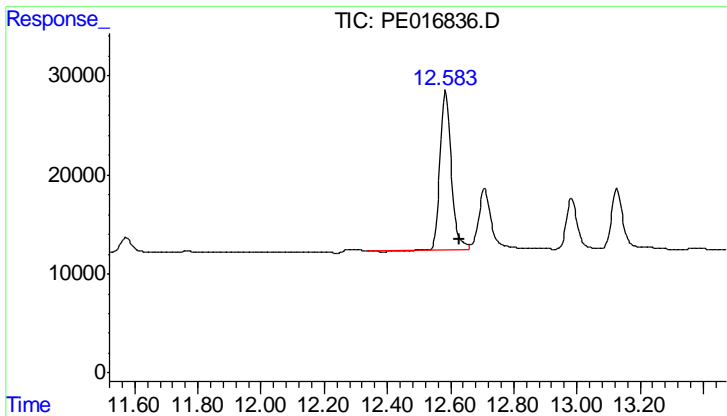
#9 2,4-D

R.T.: 11.572 min
 Delta R.T.: -0.040 min
 Response: 41696
 Conc: 257.55 ng/ml



#9 2,4-D

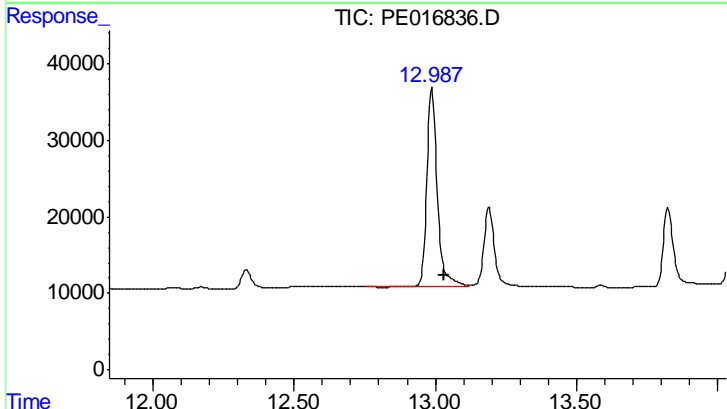
R.T.: 0.000 min
 Exp R.T.: 12.371 min
 Response: 0
 Conc: N.D.



#10 Pentachlorophenol

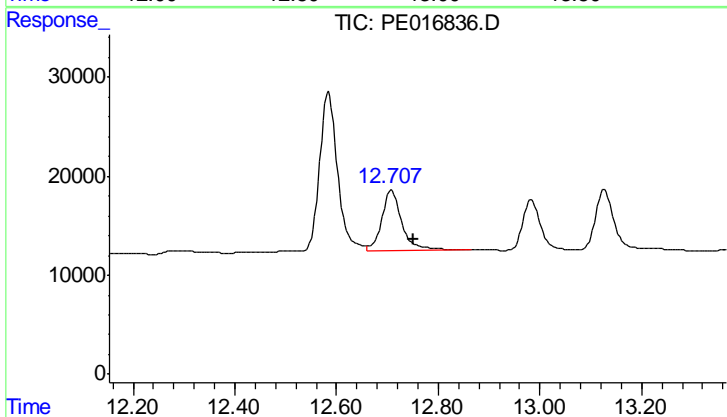
R.T.: 12.584 min
 Delta R.T.: -0.044 min
 Response: 389794
 Conc: 272.81 ng/ml

Instrument :
 ECD_E
 ClientSampleId :
 SASP2P-EPE-116-4(30-40)MSD



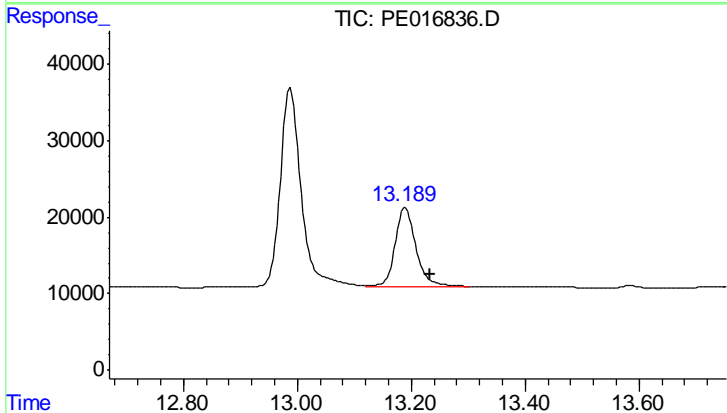
#10 Pentachlorophenol

R.T.: 12.988 min
 Delta R.T.: -0.044 min
 Response: 661445
 Conc: 284.96 ng/ml



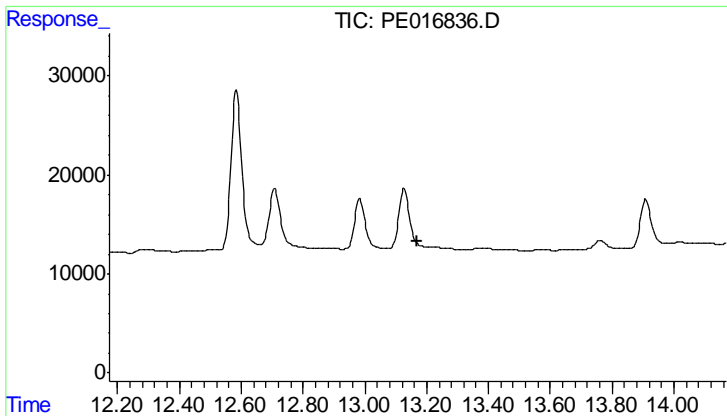
#11 2,4,5-TP (SILVEX)

R.T.: 12.708 min
 Delta R.T.: -0.042 min
 Response: 169832
 Conc: 298.82 ng/ml



#11 2,4,5-TP (SILVEX)

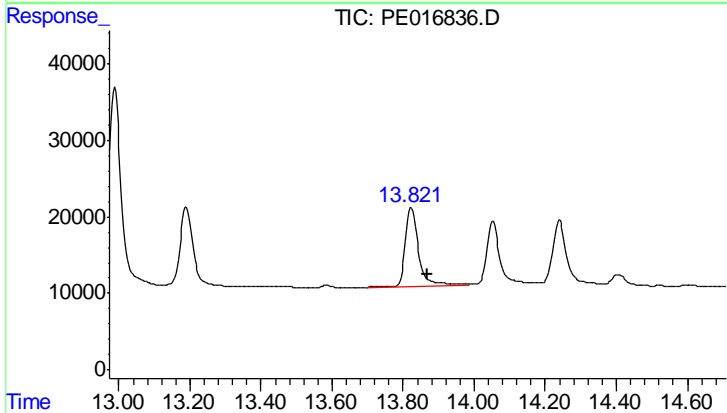
R.T.: 13.190 min
 Delta R.T.: -0.044 min
 Response: 261998
 Conc: 265.99 ng/ml



#12 2,4,5-T

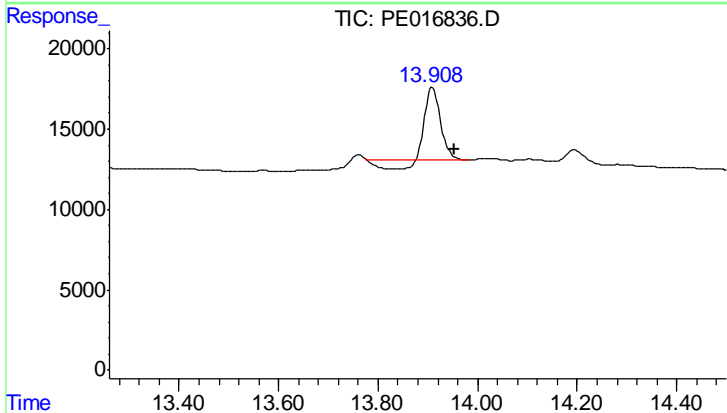
R.T.: 0.000 min
 Exp R.T.: 13.170 min
 Response: 0
 Conc: N.D.

Instrument :
 ECD_E
 ClientSampleId :
 SASP2P-EPE-116-4(30-40)MSD



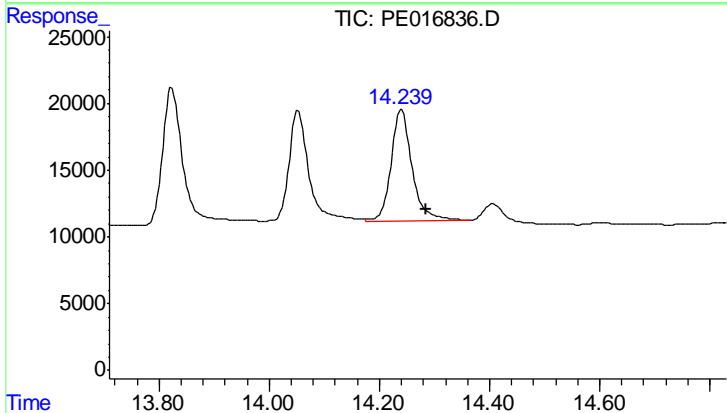
#12 2,4,5-T

R.T.: 13.823 min
 Delta R.T.: -0.046 min
 Response: 272100
 Conc: 251.28 ng/ml



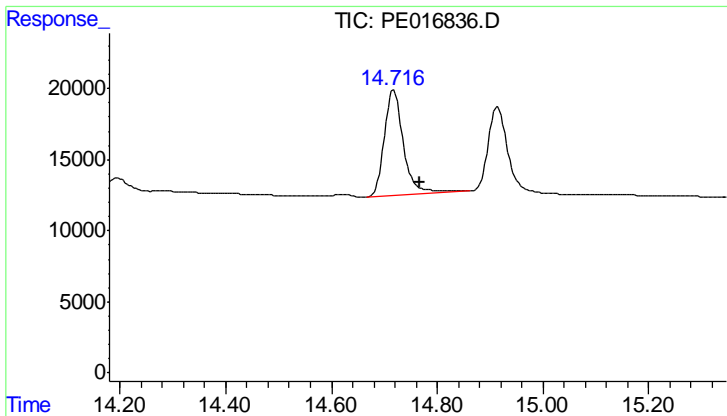
#14 DINOSEB

R.T.: 13.909 min
 Delta R.T.: -0.045 min
 Response: 83231
 Conc: 155.01 ng/ml



#14 DINOSEB

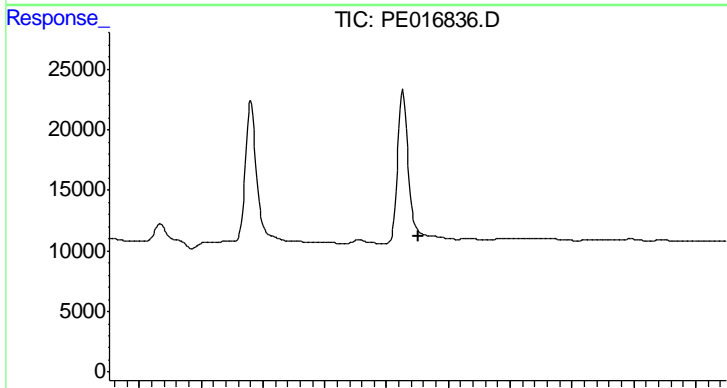
R.T.: 14.240 min
 Delta R.T.: -0.044 min
 Response: 225394
 Conc: 254.45 ng/ml



#15 Picloram

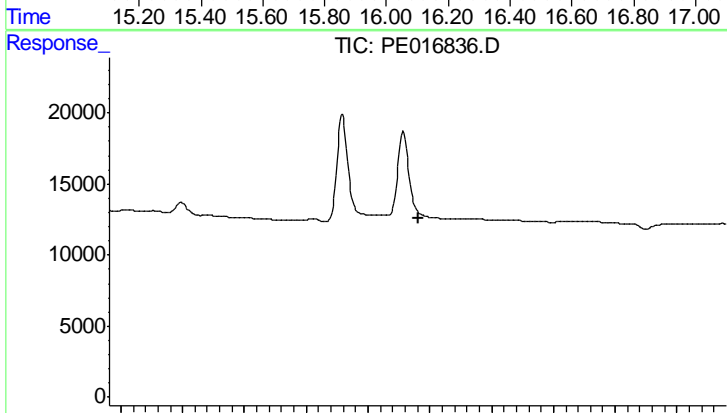
R.T.: 14.717 min
 Delta R.T.: -0.049 min
 Response: 187625
 Conc: 174.00 ng/ml

Instrument :
 ECD_E
 ClientSampled :
 SASP2P-EPE-116-4(30-40)MSD



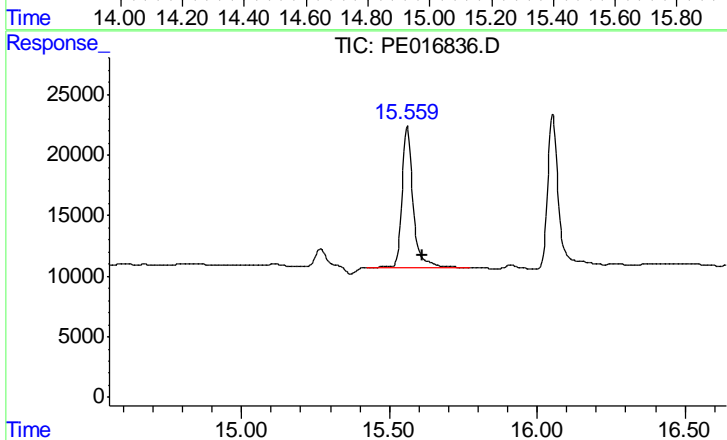
#15 Picloram

R.T.: 0.000 min
 Exp R.T. : 16.103 min
 Response: 0
 Conc: N.D.



#16 DCPA

R.T.: 0.000 min
 Exp R.T. : 14.963 min
 Response: 0
 Conc: N.D.



#16 DCPA

R.T.: 15.561 min
 Delta R.T.: -0.050 min
 Response: 304792
 Conc: 183.77 ng/ml