

Data Path : P:\HPCHEM1\ECD_E\Data\PE100117\
 Data File : PE016833.D
 Signal(s) : Signal #1: ECD1A.CH Signal #2: ECD2B.CH
 Acq On : 1 Oct 2017 18:22
 Operator : UA/AJ
 Sample : HSTDCCC750
 Misc :
 ALS Vial : 10 Sample Multiplier: 1

Instrument :
 ECD_E
ClientSampleId :
 HSTDCCC750

Manual Integrations
APPROVED
 ugo
 10/4/2017 10:08:36 PM

Integration File signal 1: autoint1.e
 Integration File signal 2: autoint2.e
 Quant Time: Oct 04 13:01:48 2017
 Quant Method : P:\HPCHEM1\ECD_E\Method\PE100117.M
 Quant Title : 8080.M
 QLast Update : Wed Oct 04 12:57:54 2017
 Response via : Initial Calibration
 Integrator: ChemStation

Volume Inj. : 2 µl
 Signal #1 Phase : ZB-35-HT Inferno Signal #2 Phase: ZB-XLB-HT Infernon
 Signal #1 Info : 30M x 0.25mm x0.2 Signal #2 Info : 30M x 0.25mm x 0.25µm

Compound	RT#1	RT#2	Resp#1	Resp#2	ng/ml	ng/ml

System Monitoring Compounds						
4) S 2,4-DCAA	10.013	10.593	68782	105956	715.809	702.063
Target Compounds						
1) T Dalapon	2.821	2.998	155835	225418	658.992m	697.179
2) T 3,5-DICHL...	8.732	8.965	101614	177630	647.426m	663.220
3) T 4-Nitroph...	9.076	9.822	44186	93266	538.538m	632.958
5) T DICAMBA	10.119	10.746	297549	418329	691.964	644.876
8) T DICHLORPROP	11.158	11.701	70261	139079	591.129	664.175
9) T 2,4-D	11.509	12.262	110009	163661	679.519	675.249
10) T Pentachlo...	12.516	12.914	1022239	1723681	715.451	742.595
11) T 2,4,5-TP ...	12.642	13.118	468916	786833	825.065	798.824
12) T 2,4,5-T	13.060	13.752	440839	830254	684.707	766.731
13) T 2,4-DB	13.695	14.335	57040	91396	631.932	705.465m
14) T DINOSEB	13.841	14.167	355075	704842	661.288	795.694
15) T Picloram	14.648	15.975	754599	1299074	699.793	680.119
16) T DCPA	14.845	15.485	591262	1228390	687.368	740.640

(f)=RT Delta > 1/2 Window (#)=Amounts differ by > 25% (m)=manual int.

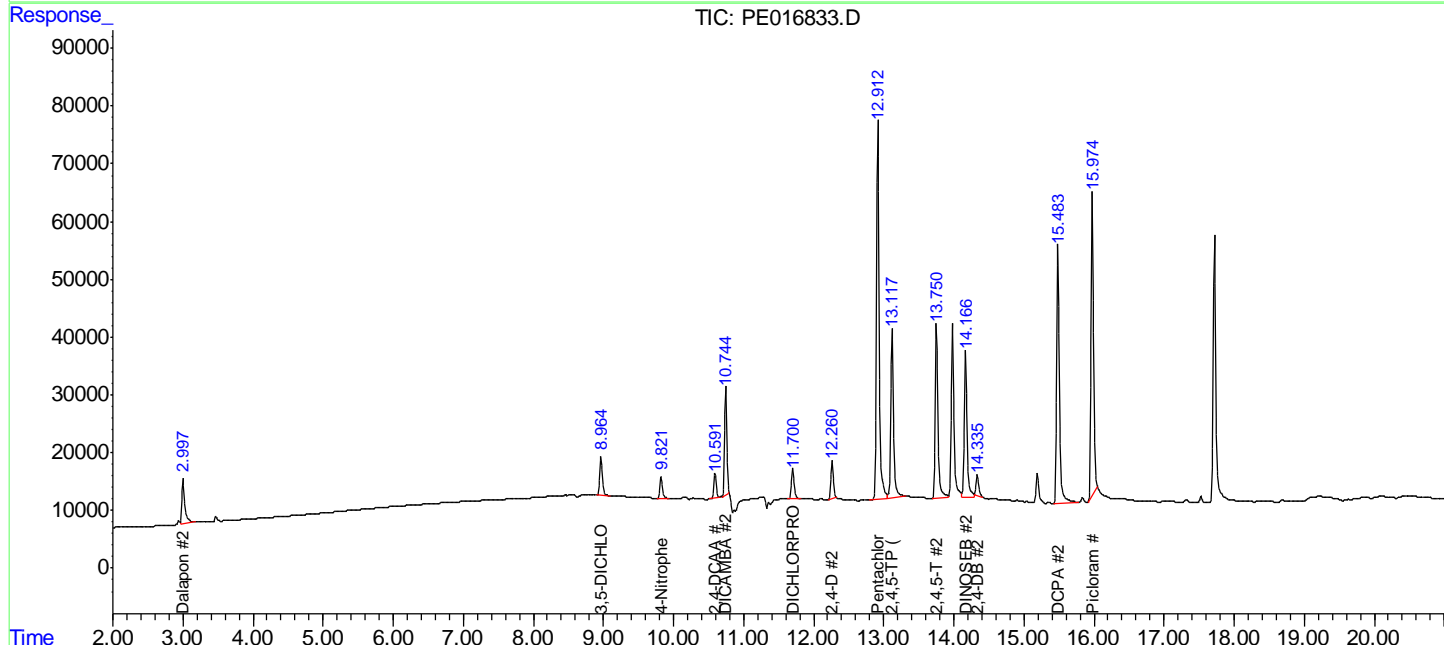
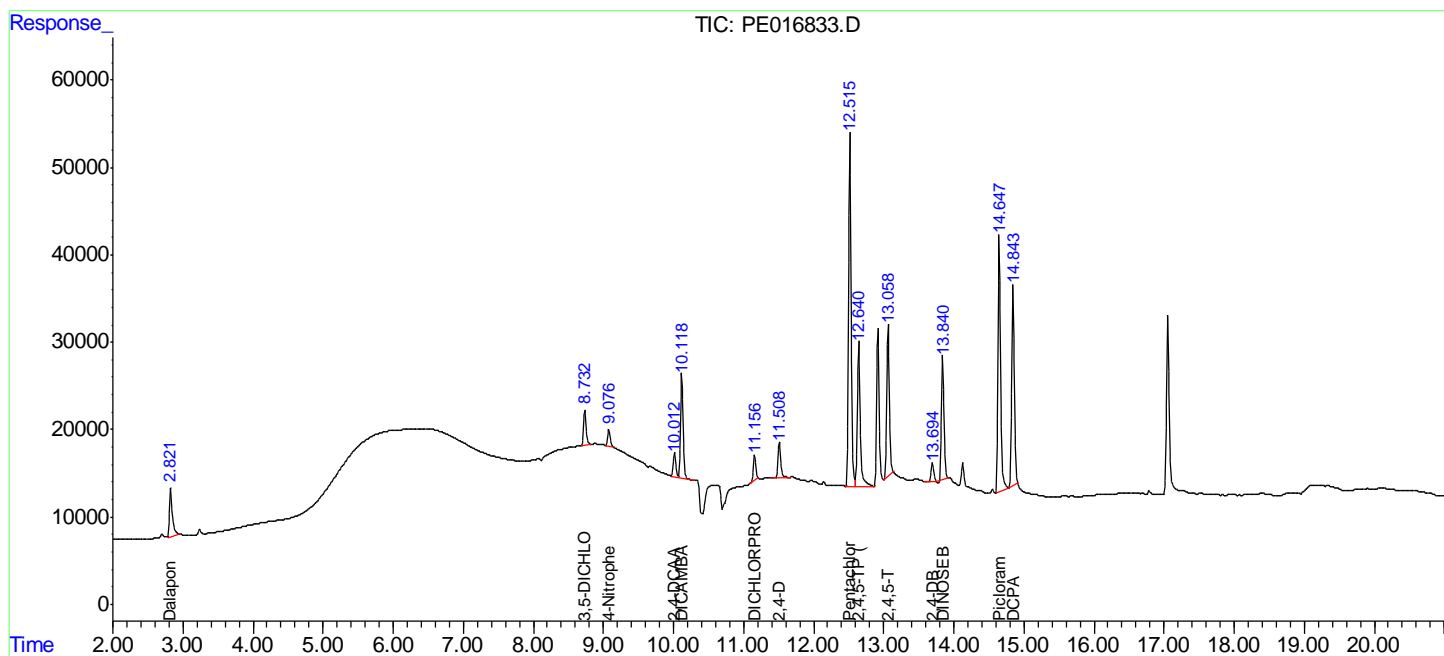
Data Path : P:\HPCHEM1\ECD_E\Data\PE100117\
 Data File : PE016833.D
 Signal(s) : Signal #1: ECD1A.CH Signal #2: ECD2B.CH
 Acq On : 1 Oct 2017 18:22
 Operator : UA/AJ
 Sample : HSTDCCC750
 Misc :
 ALS Vial : 10 Sample Multiplier: 1

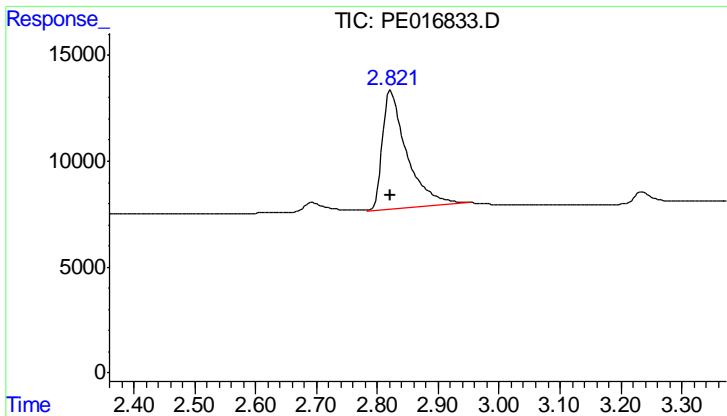
Instrument :
 ECD_E
 Client Sampled :
 HSTDCCC750

Manual Integrations
APPROVED
 ugo
 10/4/2017 10:08:36 PM

Integration File signal 1: autoint1.e
 Integration File signal 2: autoint2.e
 Quant Time: Oct 04 13:01:48 2017
 Quant Method : P:\HPCHEM1\ECD_E\Method\PE100117.M
 Quant Title : 8080.M
 QLast Update : Wed Oct 04 12:57:54 2017
 Response via : Initial Calibration
 Integrator: ChemStation

Volume Inj. : 2 µl
 Signal #1 Phase : ZB-35-HT Inferno Signal #2 Phase: ZB-XLB-HT Inferno
 Signal #1 Info : 30M x 0.25mm x0.2 Signal #2 Info : 30M x 0.25mm x 0.25µm





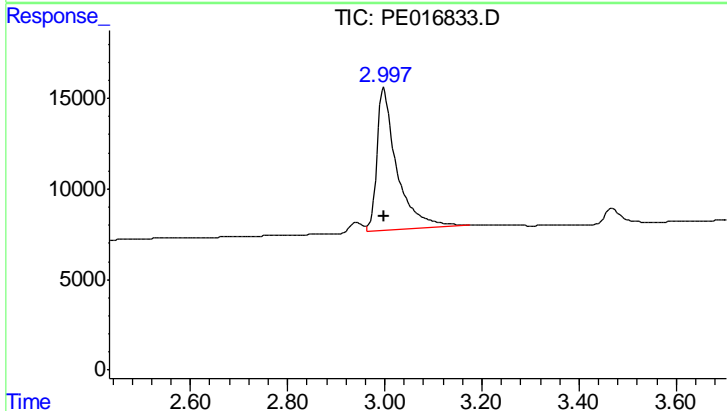
#1 Dalapon

R.T.: 2.821 min
 Delta R.T.: 0.000 min
 Response: 155835
 Conc: 658.99 ng/ml

Instrument :
 ECD_E
 ClientSampleId :
 HSTDCCC750

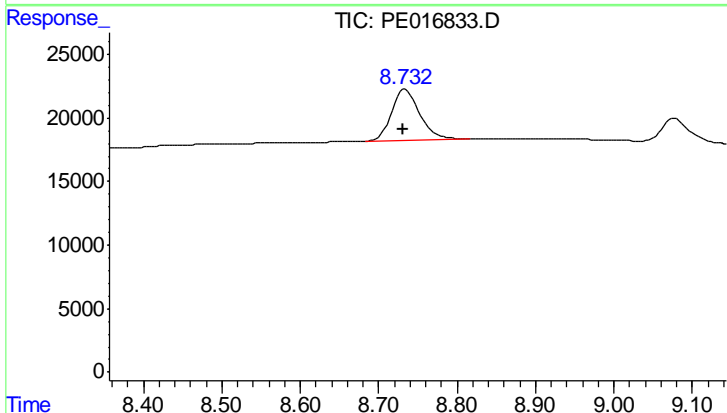
Manual Integrations
 APPROVED

ugo
 10/4/2017 10:08:36 PM



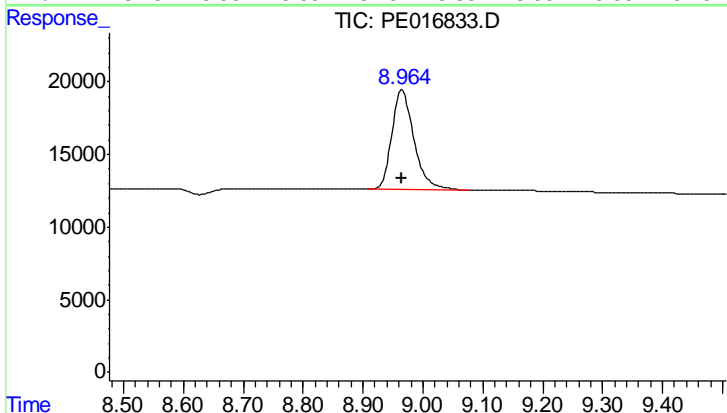
#1 Dalapon

R.T.: 2.998 min
 Delta R.T.: 0.000 min
 Response: 225418
 Conc: 697.18 ng/ml



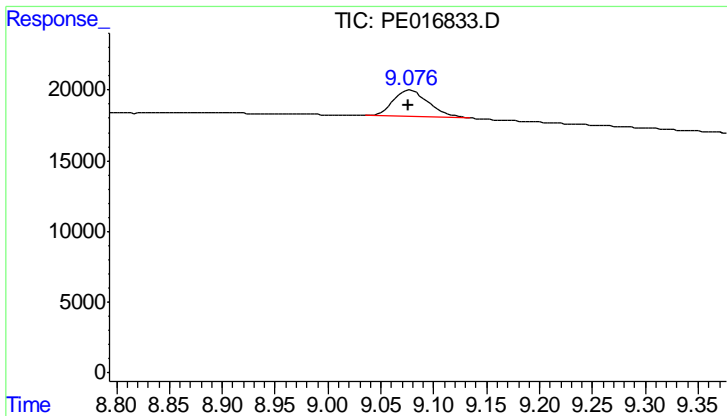
#2 3,5-DICHLOROBENZOIC ACID

R.T.: 8.732 min
 Delta R.T.: 0.000 min
 Response: 101614
 Conc: 647.43 ng/ml m



#2 3,5-DICHLOROBENZOIC ACID

R.T.: 8.965 min
 Delta R.T.: 0.001 min
 Response: 177630
 Conc: 663.22 ng/ml



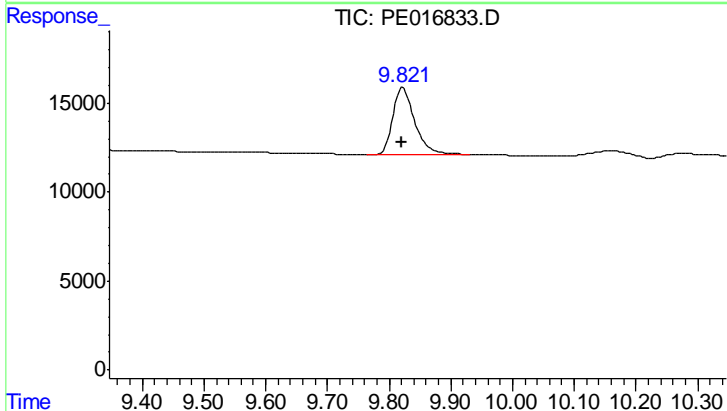
#3 4-Nitrophenol

R.T.: 9.076 min
 Delta R.T.: 0.000 min
 Response: 44186
 Conc: 538.54 ng/ml

Instrument :
 ECD_E
 ClientSampleId :
 HSTDCCC750

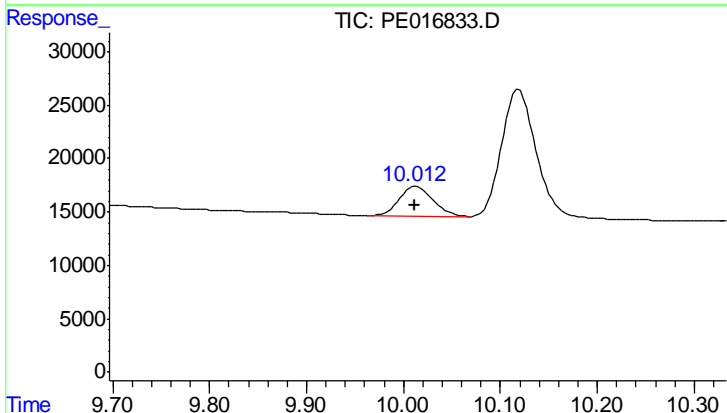
Manual Integrations
 APPROVED

ugo
 10/4/2017 10:08:36 PM



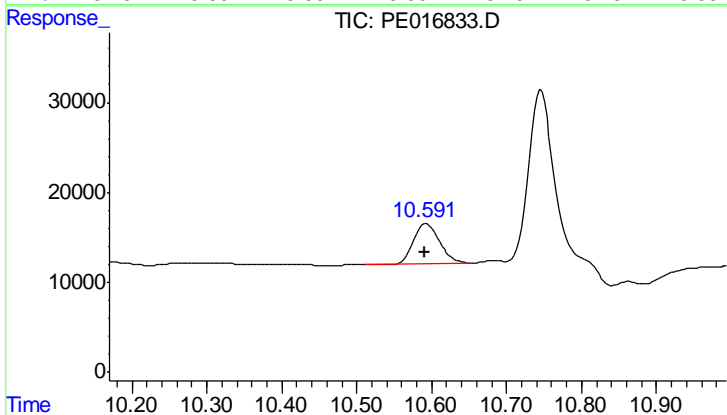
#3 4-Nitrophenol

R.T.: 9.822 min
 Delta R.T.: 0.001 min
 Response: 93266
 Conc: 632.96 ng/ml



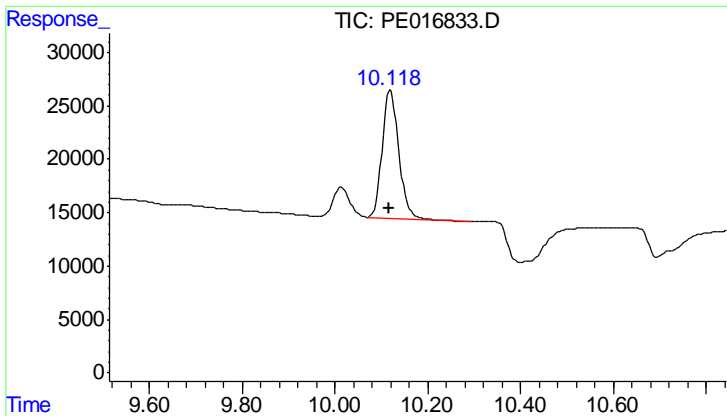
#4 2,4-DCAA

R.T.: 10.013 min
 Delta R.T.: 0.001 min
 Response: 68782
 Conc: 715.81 ng/ml



#4 2,4-DCAA

R.T.: 10.593 min
 Delta R.T.: 0.002 min
 Response: 105956
 Conc: 702.06 ng/ml



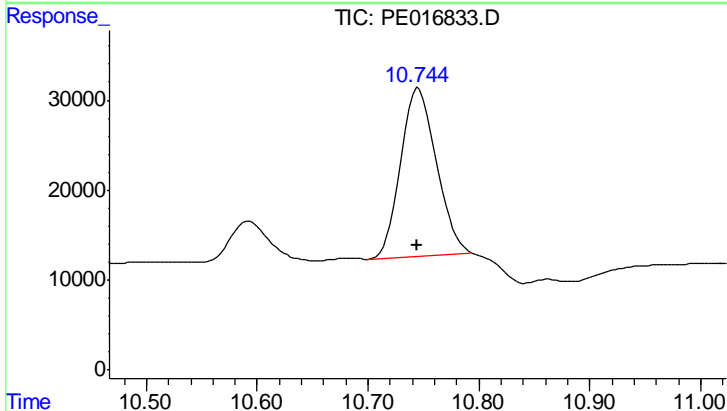
#5 DICAMBA

R.T.: 10.119 min
 Delta R.T.: 0.002 min
 Response: 297549
 Conc: 691.96 ng/ml

Instrument :
 ECD_E
 ClientSampleId :
 HSTDCCC750

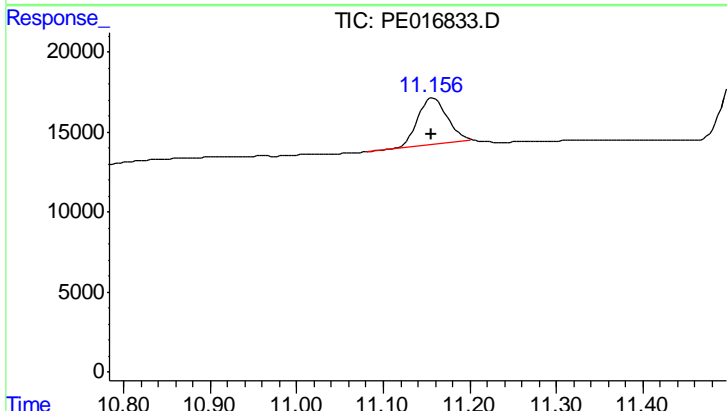
Manual Integrations
 APPROVED

ugo
 10/4/2017 10:08:36 PM



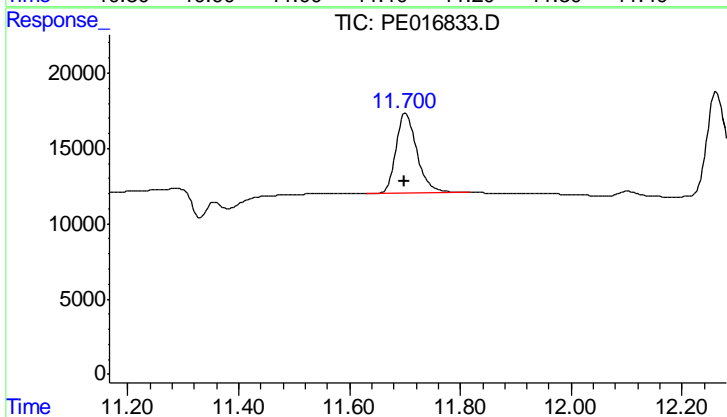
#5 DICAMBA

R.T.: 10.746 min
 Delta R.T.: 0.001 min
 Response: 418329
 Conc: 644.88 ng/ml



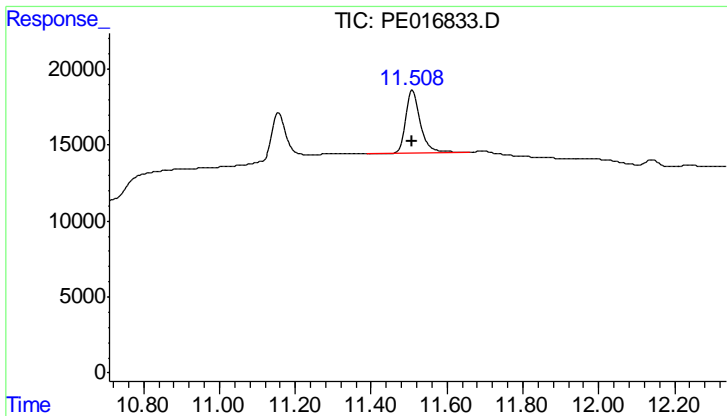
#8 DICHLORPROP

R.T.: 11.158 min
 Delta R.T.: 0.002 min
 Response: 70261
 Conc: 591.13 ng/ml



#8 DICHLORPROP

R.T.: 11.701 min
 Delta R.T.: 0.001 min
 Response: 139079
 Conc: 664.18 ng/ml



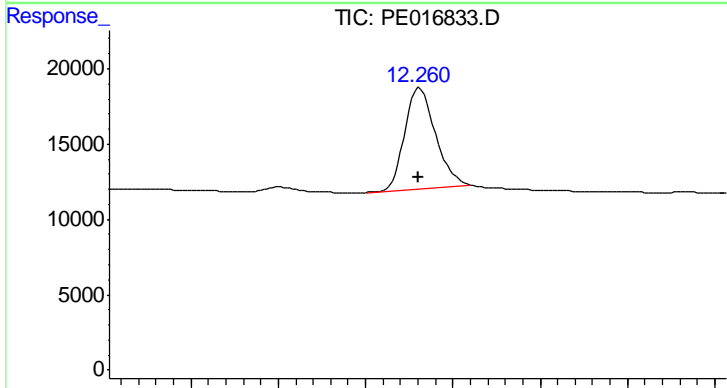
#9 2,4-D

R.T.: 11.509 min
 Delta R.T.: 0.002 min
 Response: 110009
 Conc: 679.52 ng/ml

Instrument :
 ECD_E
 ClientSampleId :
 HSTDCCC750

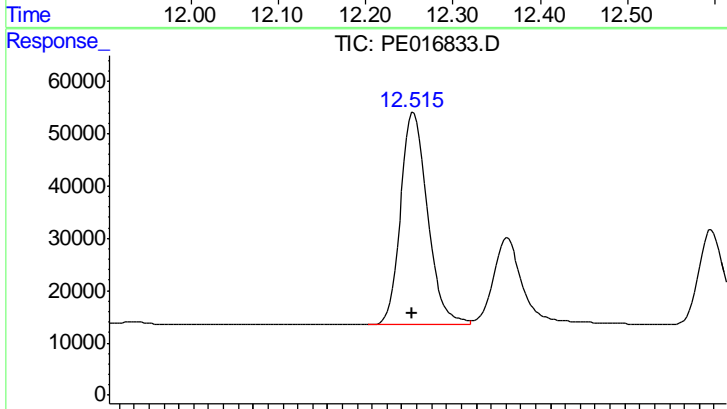
Manual Integrations
 APPROVED

ugo
 10/4/2017 10:08:36 PM



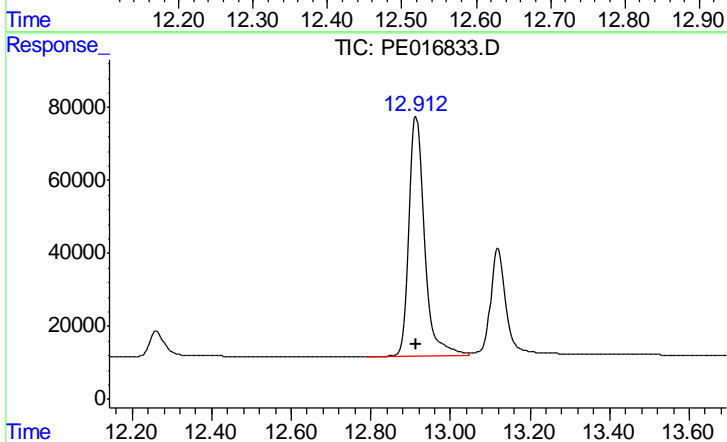
#9 2,4-D

R.T.: 12.262 min
 Delta R.T.: 0.002 min
 Response: 163661
 Conc: 675.25 ng/ml



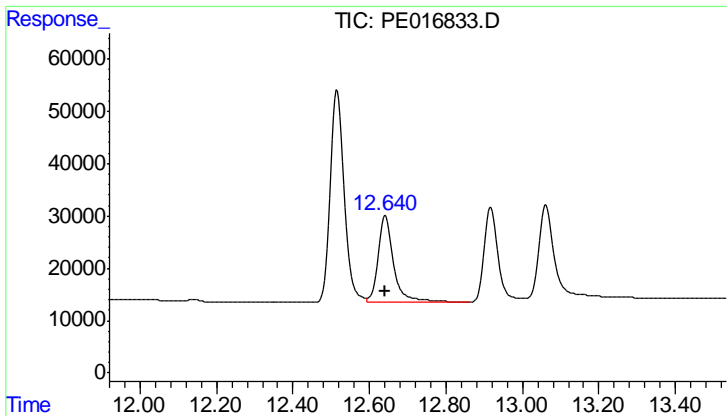
#10 Pentachlorophenol

R.T.: 12.516 min
 Delta R.T.: 0.002 min
 Response: 1022239
 Conc: 715.45 ng/ml



#10 Pentachlorophenol

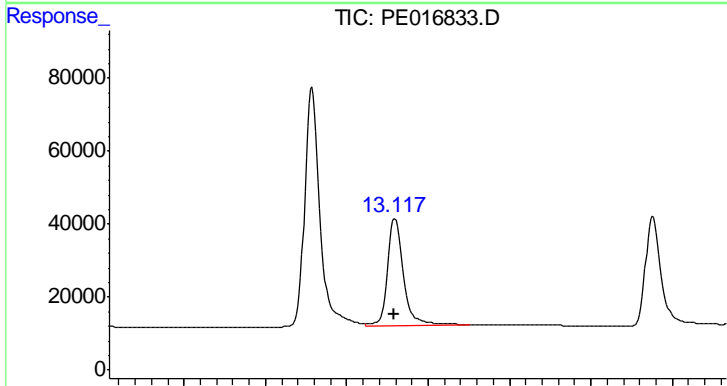
R.T.: 12.914 min
 Delta R.T.: 0.001 min
 Response: 1723681
 Conc: 742.60 ng/ml



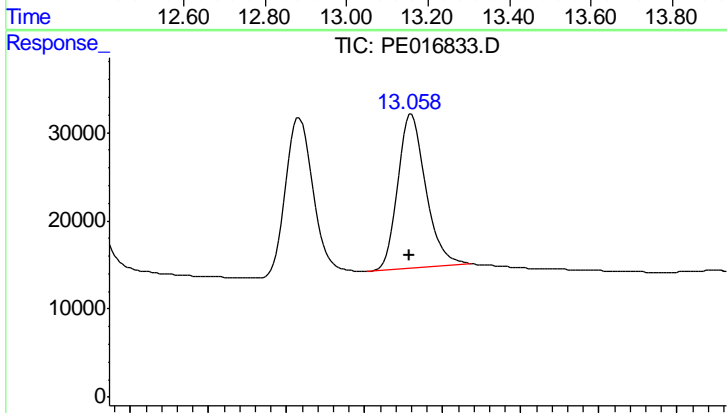
#11 2,4,5-TP (SILVEX)
 R.T.: 12.642 min
 Delta R.T.: 0.002 min
 Response: 468916
 Conc: 825.06 ng/ml

Instrument :
 ECD_E
 ClientSampleId :
 HSTDCCC750

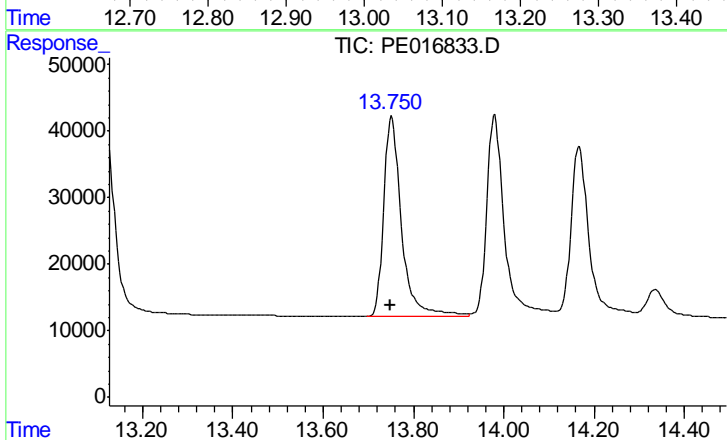
Manual Integrations
 APPROVED
 ugo
 10/4/2017 10:08:36 PM



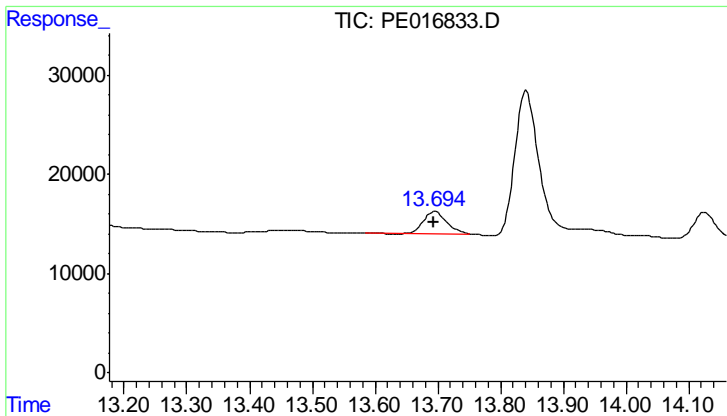
#11 2,4,5-TP (SILVEX)
 R.T.: 13.118 min
 Delta R.T.: 0.002 min
 Response: 786833
 Conc: 798.82 ng/ml



#12 2,4,5-T
 R.T.: 13.060 min
 Delta R.T.: 0.002 min
 Response: 440839
 Conc: 684.71 ng/ml



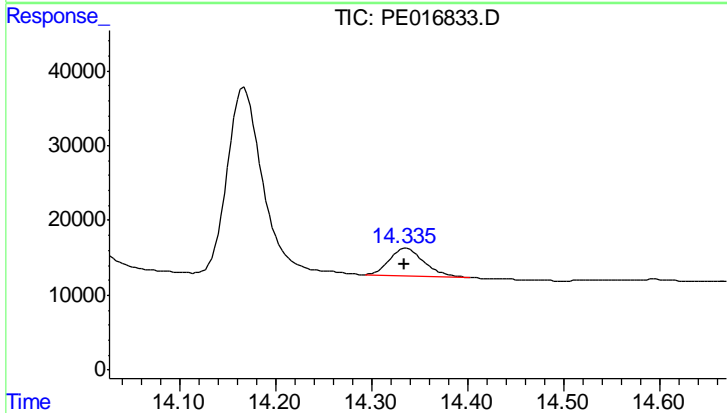
#12 2,4,5-T
 R.T.: 13.752 min
 Delta R.T.: 0.001 min
 Response: 830254
 Conc: 766.73 ng/ml



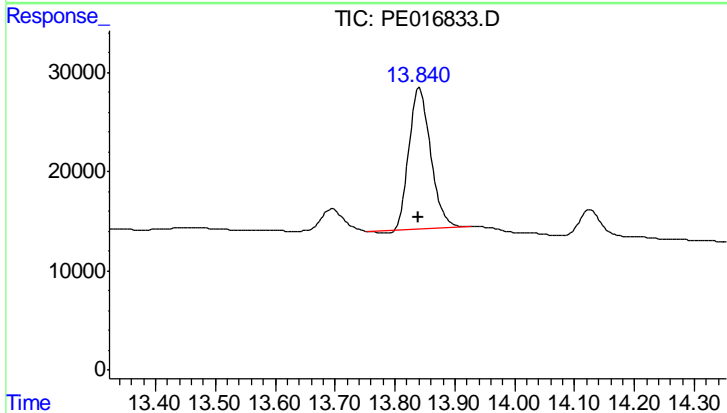
#13 2,4-DB
 R.T.: 13.695 min
 Delta R.T.: 0.002 min
 Response: 57040
 Conc: 631.93 ng/ml

Instrument :
 ECD_E
 ClientSampleId :
 HSTDCCC750

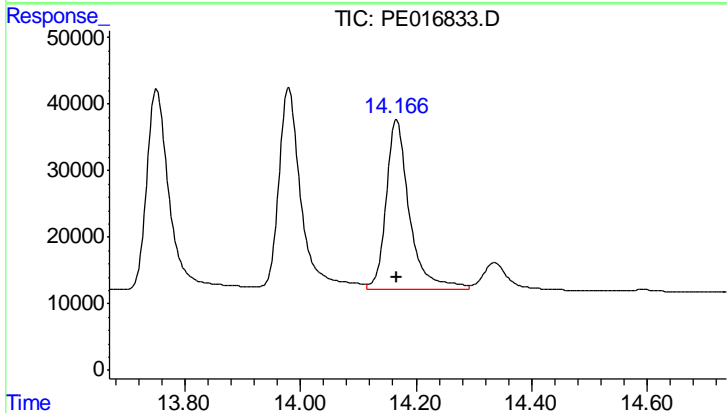
Manual Integrations
 APPROVED
 ugo
 10/4/2017 10:08:36 PM



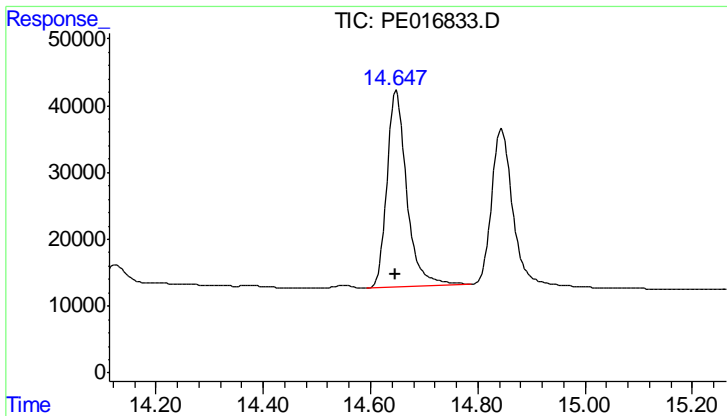
#13 2,4-DB
 R.T.: 14.335 min
 Delta R.T.: 0.000 min
 Response: 91396
 Conc: 705.46 ng/ml m



#14 DINOSEB
 R.T.: 13.841 min
 Delta R.T.: 0.002 min
 Response: 355075
 Conc: 661.29 ng/ml



#14 DINOSEB
 R.T.: 14.167 min
 Delta R.T.: 0.001 min
 Response: 704842
 Conc: 795.69 ng/ml



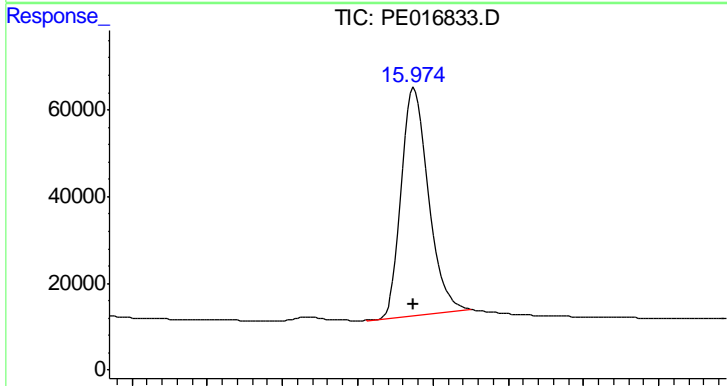
#15 Picloram

R.T.: 14.648 min
 Delta R.T.: 0.002 min
 Response: 754599
 Conc: 699.79 ng/ml

Instrument :
 ECD_E
 ClientSampleId :
 HSTDCCC750

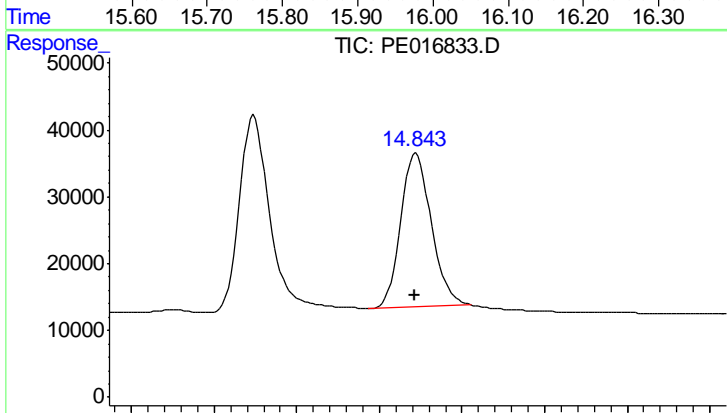
Manual Integrations
 APPROVED

ugo
 10/4/2017 10:08:36 PM



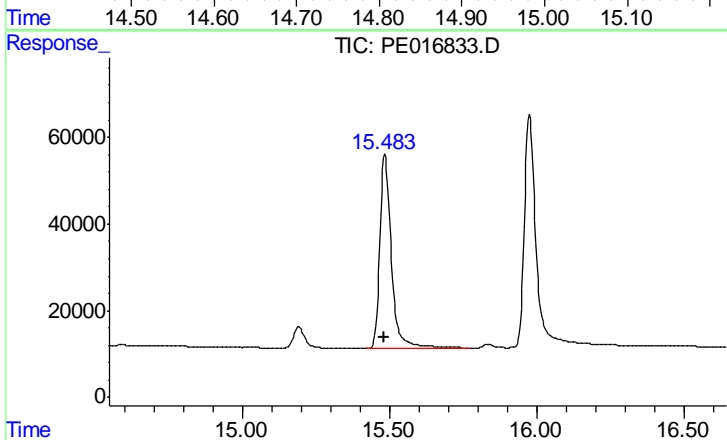
#15 Picloram

R.T.: 15.975 min
 Delta R.T.: 0.002 min
 Response: 1299074
 Conc: 680.12 ng/ml



#16 DCPA

R.T.: 14.845 min
 Delta R.T.: 0.001 min
 Response: 591262
 Conc: 687.37 ng/ml



#16 DCPA

R.T.: 15.485 min
 Delta R.T.: 0.002 min
 Response: 1228390
 Conc: 740.64 ng/ml