

Data Path : P:\HPCHEM1\ECD_E\Data\PE101617\
 Data File : PE017233.D
 Signal(s) : Signal #1: ECD1A.CH Signal #2: ECD2B.CH
 Acq On : 16 Oct 2017 20:39
 Operator : UA/AJ
 Sample : I5782-10
 Misc :
 ALS Vial : 18 Sample Multiplier: 1

Instrument :
 ECD_E
ClientSampleId :
 S5(10-12)

Manual Integrations
APPROVED
 ugo
 10/18/2017 3:13:48 PM

Integration File signal 1: autoint1.e
 Integration File signal 2: autoint2.e
 Quant Time: Oct 16 23:32:28 2017
 Quant Method : P:\HPCHEM1\ECD_E\Method\PE101217.M
 Quant Title : 8080.M
 QLast Update : Mon Oct 16 12:20:02 2017
 Response via : Initial Calibration
 Integrator: ChemStation

Volume Inj. : 2 µl
 Signal #1 Phase : ZB-35-HT Inferno Signal #2 Phase: ZB-XLB-HT Infernon
 Signal #1 Info : 30M x 0.25mm x0.2 Signal #2 Info : 30M x 0.25mm x 0.25µm

Compound	RT#1	RT#2	Resp#1	Resp#2	ng/ml	ng/ml

System Monitoring Compounds						
4) S 2,4-DCAA	10.406	11.004	8210	12731	87.173m	88.034m

Target Compounds

 (f)=RT Delta > 1/2 Window (#)=Amounts differ by > 25% (m)=manual int.

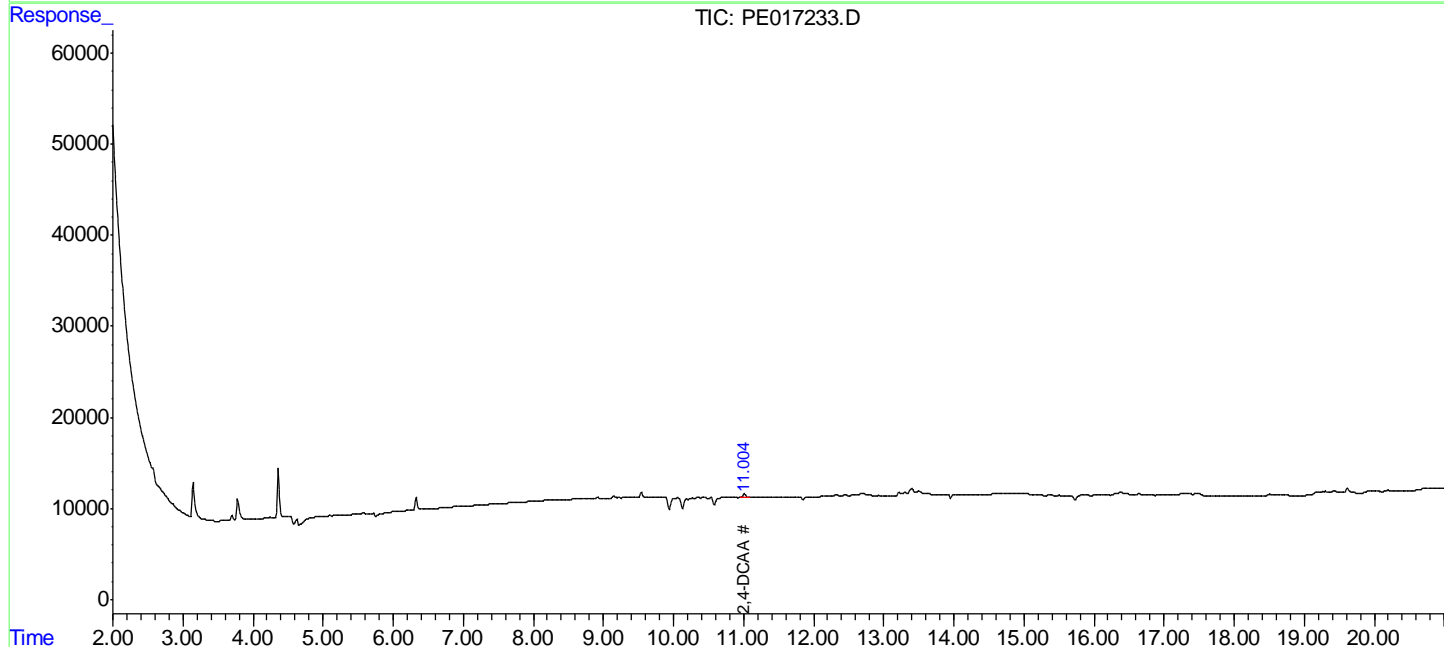
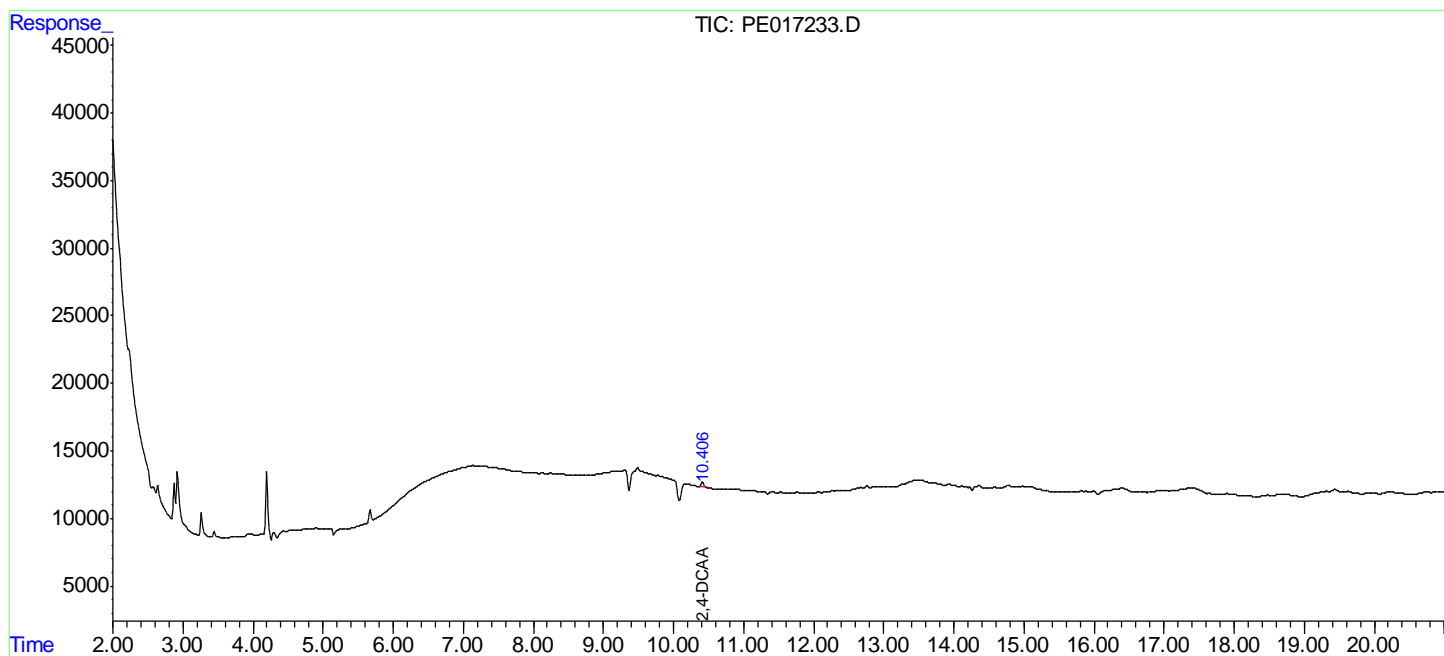
Data Path : P:\HPCHEM1\ECD_E\Data\PE101617\
 Data File : PE017233.D
 Signal(s) : Signal #1: ECD1A.CH Signal #2: ECD2B.CH
 Acq On : 16 Oct 2017 20:39
 Operator : UA/AJ
 Sample : I5782-10
 Misc :
 ALS Vial : 18 Sample Multiplier: 1

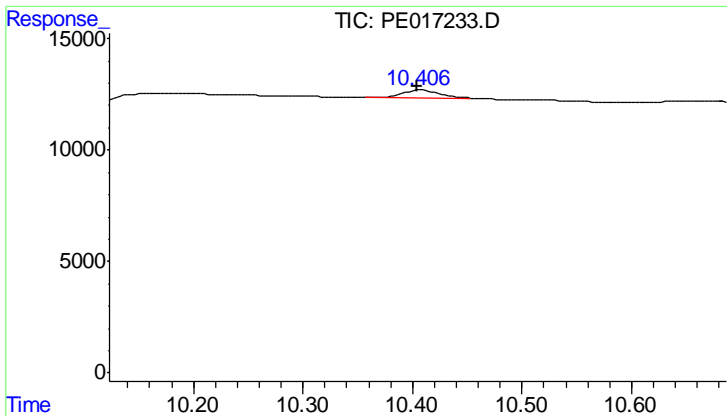
Instrument :
 ECD_E
ClientSampled :
 S5(10-12)

Manual Integrations
APPROVED
 ugo
 10/18/2017 3:13:48 PM

Integration File signal 1: autoint1.e
 Integration File signal 2: autoint2.e
 Quant Time: Oct 16 23:32:28 2017
 Quant Method : P:\HPCHEM1\ECD_E\Method\PE101217.M
 Quant Title : 8080.M
 QLast Update : Mon Oct 16 12:20:02 2017
 Response via : Initial Calibration
 Integrator: ChemStation

Volume Inj. : 2 µl
 Signal #1 Phase : ZB-35-HT Inferno Signal #2 Phase: ZB-XLB-HT Infernon
 Signal #1 Info : 30M x 0.25mm x0.2 Signal #2 Info : 30M x 0.25mm x 0.25µm





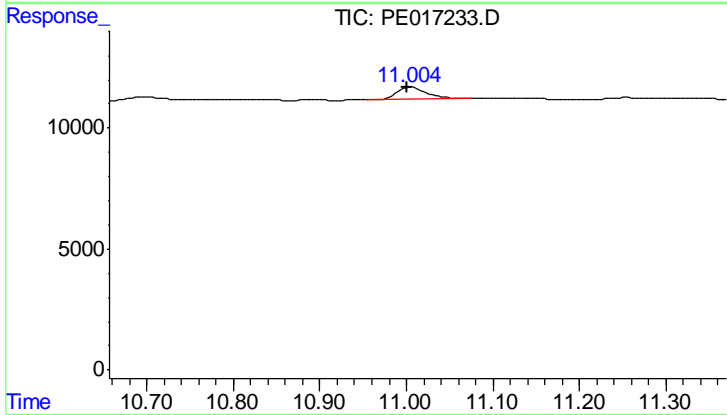
#4 2,4-DCAA

R.T.: 10.406 min
 Delta R.T.: 0.001 min
 Response: 8210
 Conc: 87.17 ng/ml

Instrument :
 ECD_E
 ClientSampled :
 S5(10-12)

Manual Integrations
 APPROVED

ugo
 10/18/2017 3:13:48 PM



#4 2,4-DCAA

R.T.: 11.004 min
 Delta R.T.: 0.003 min
 Response: 12731
 Conc: 88.03 ng/ml m