

Data Path : P:\HPCHEM1\ECD_E\Data\PE012918\
 Data File : PE019018.D
 Signal(s) : Signal #1: ECD1A.CH Signal #2: ECD2B.CH
 Acq On : 29 Jan 2018 22:08
 Operator : UA/AJ
 Sample : J1253-07
 Misc :
 ALS Vial : 17 Sample Multiplier: 1

Instrument :
 ECD_E
 ClientSampleId :
 WC-04(0-5)

Integration File signal 1: autoint1.e
 Integration File signal 2: autoint2.e
 Quant Time: Jan 30 03:19:53 2018
 Quant Method : P:\HPCHEM1\ECD_E\Method\PE012618.M
 Quant Title : 8080.M
 QLast Update : Sat Jan 27 02:21:44 2018
 Response via : Initial Calibration
 Integrator: ChemStation

Volume Inj. : 2 µl
 Signal #1 Phase : ZB-35-HT Inferno Signal #2 Phase: ZB-XLB-HT Infernon
 Signal #1 Info : 30M x 0.25mm x0.2 Signal #2 Info : 30M x 0.25mm x 0.25µm

Compound	RT#1	RT#2	Resp#1	Resp#2	ng/ml	ng/ml

System Monitoring Compounds						
4) S 2,4-DCAA	10.219	10.819	64193	48435	487.228	244.198 #
Target Compounds						
1) T Dalapon	2.939	0.000	23482	0	103.239	N.D. #
3) T 4-Nitroph...	9.301	0.000	7925	0	55.854	N.D. #
10) T Pentachlo...	0.000	13.171	0	19908	N.D.	6.257 #

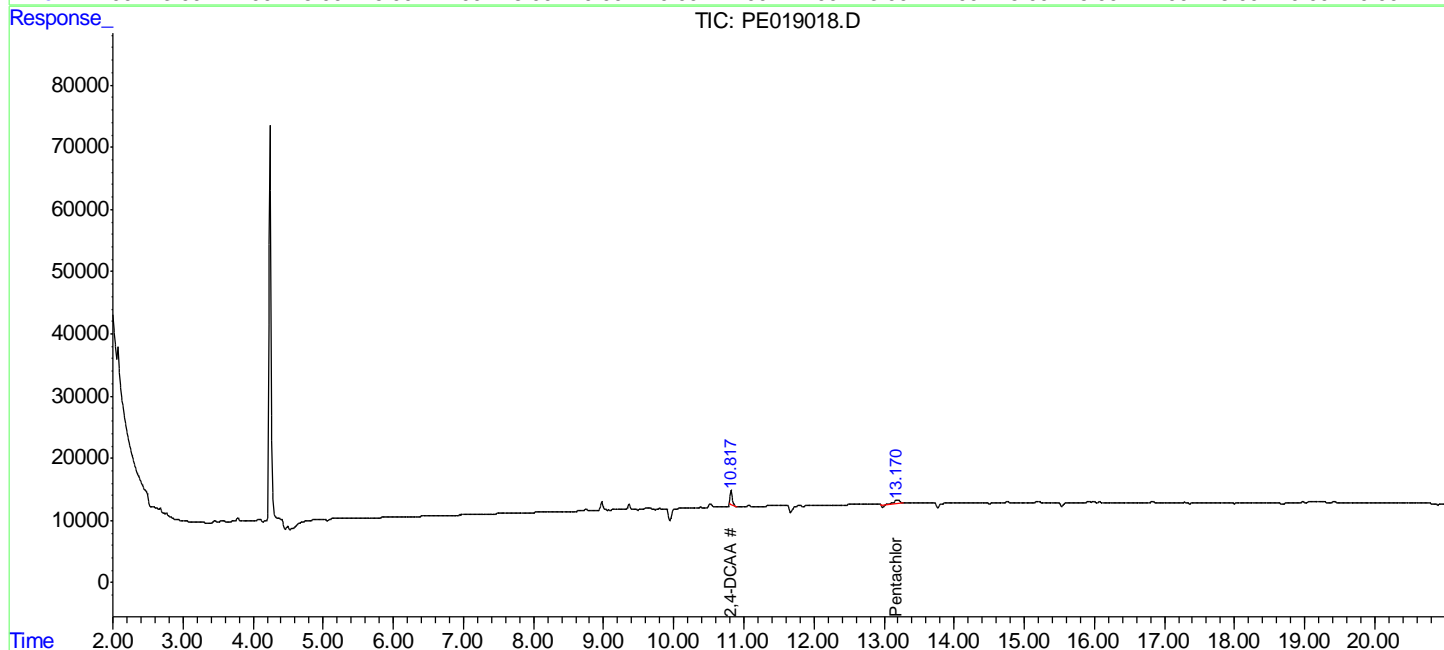
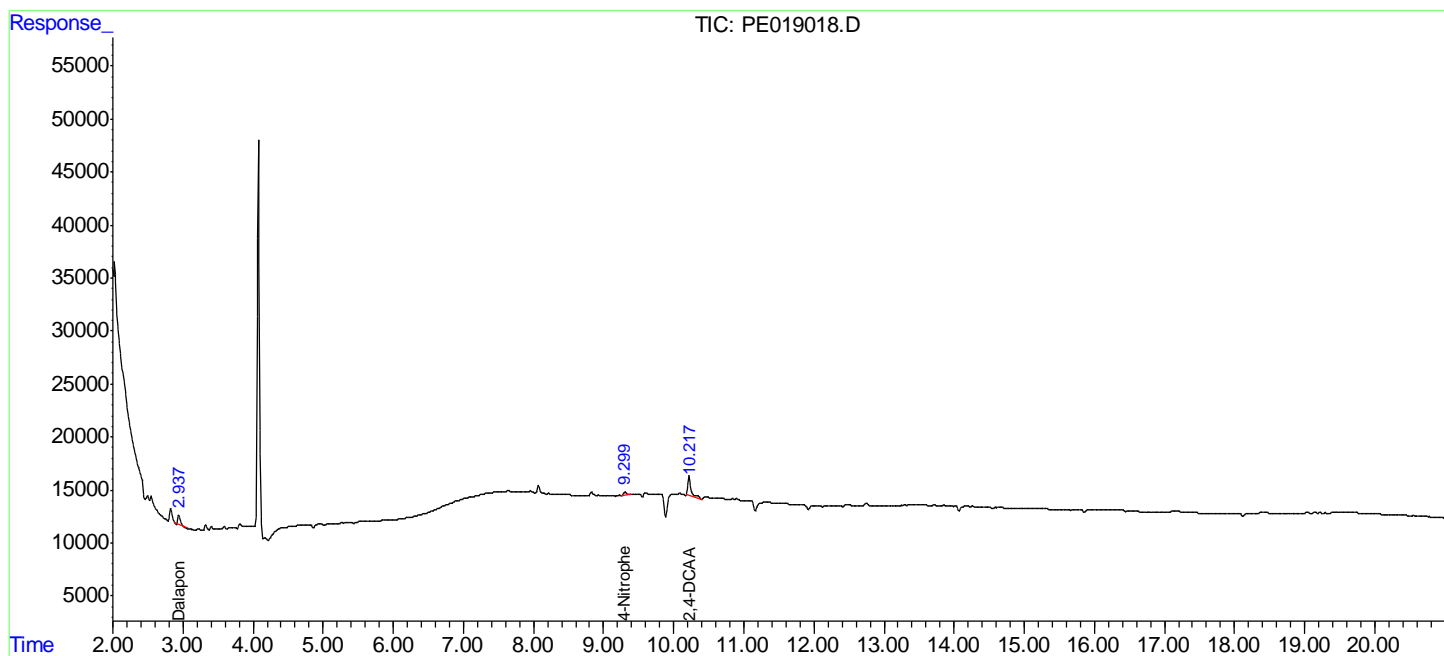
(f)=RT Delta > 1/2 Window (#)=Amounts differ by > 25% (m)=manual int.

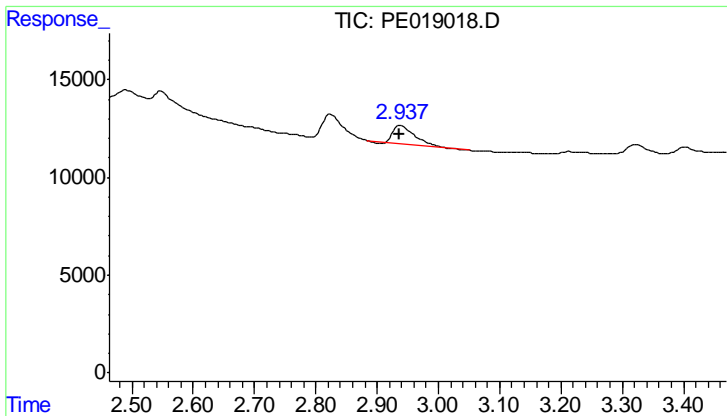
Data Path : P:\HPCHEM1\ECD_E\Data\PE012918\
 Data File : PE019018.D
 Signal(s) : Signal #1: ECD1A.CH Signal #2: ECD2B.CH
 Acq On : 29 Jan 2018 22:08
 Operator : UA/AJ
 Sample : J1253-07
 Misc :
 ALS Vial : 17 Sample Multiplier: 1

Instrument :
 ECD_E
 ClientSampleID :
 WC-04(0-5)

Integration File signal 1: autoint1.e
 Integration File signal 2: autoint2.e
 Quant Time: Jan 30 03:19:53 2018
 Quant Method : P:\HPCHEM1\ECD_E\Method\PE012618.M
 Quant Title : 8080.M
 QLast Update : Sat Jan 27 02:21:44 2018
 Response via : Initial Calibration
 Integrator: ChemStation

Volume Inj. : 2 µl
 Signal #1 Phase : ZB-35-HT Inferno Signal #2 Phase: ZB-XLB-HT Infernon
 Signal #1 Info : 30M x 0.25mm x0.2 Signal #2 Info : 30M x 0.25mm x 0.25µm

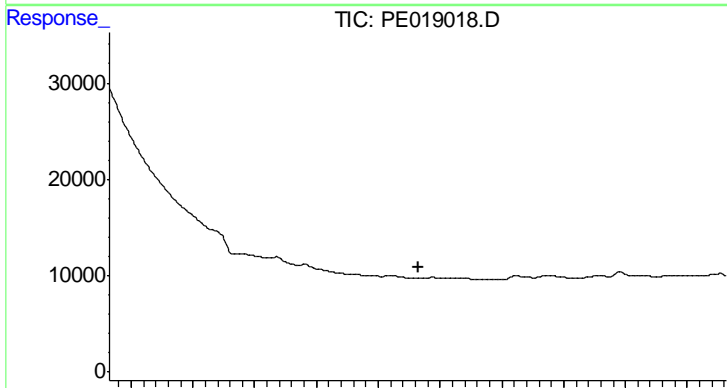




#1 Dalapon

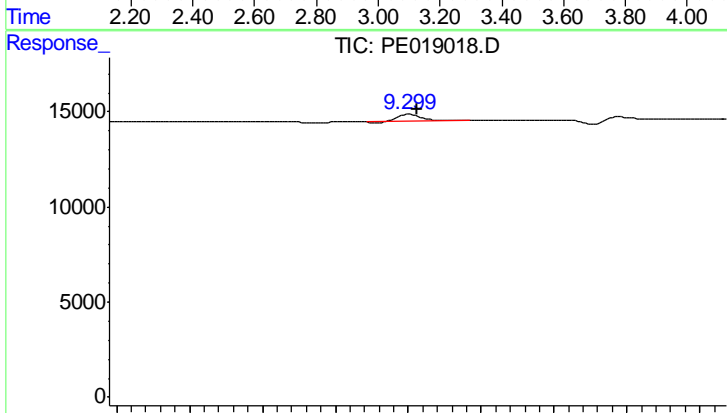
R.T.: 2.939 min
 Delta R.T.: 0.002 min
 Response: 23482
 Conc: 103.24 ng/ml

Instrument :
 ECD_E
 ClientSampleId :
 WC-04(0-5)



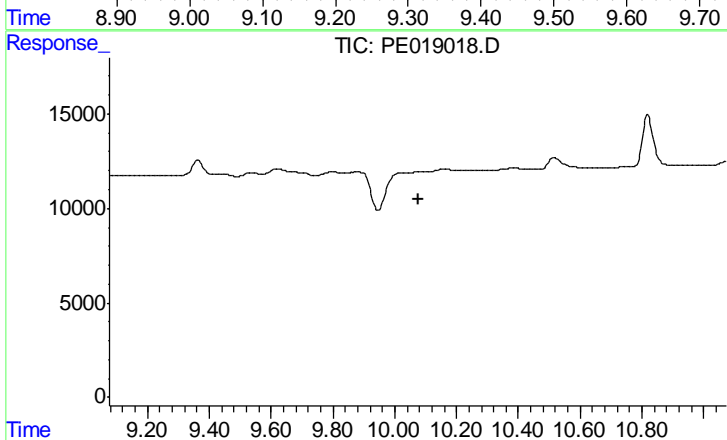
#1 Dalapon

R.T.: 0.000 min
 Exp R.T. : 3.129 min
 Response: 0
 Conc: N.D.



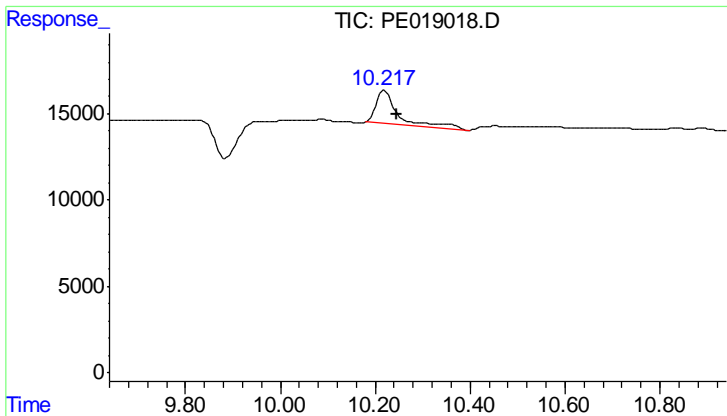
#3 4-Nitrophenol

R.T.: 9.301 min
 Delta R.T.: -0.012 min
 Response: 7925
 Conc: 55.85 ng/ml



#3 4-Nitrophenol

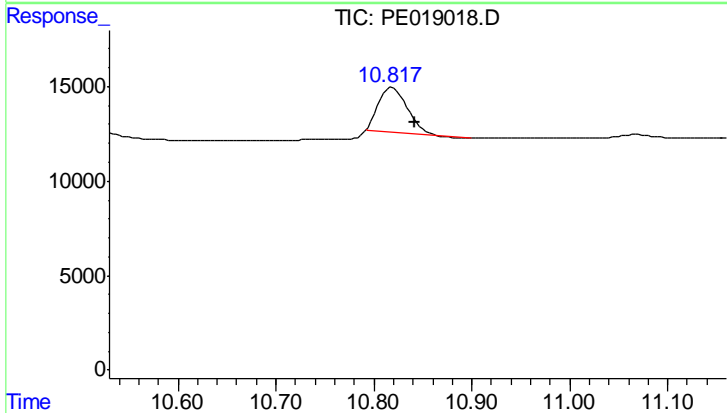
R.T.: 0.000 min
 Exp R.T. : 10.076 min
 Response: 0
 Conc: N.D.



#4 2,4-DCAA

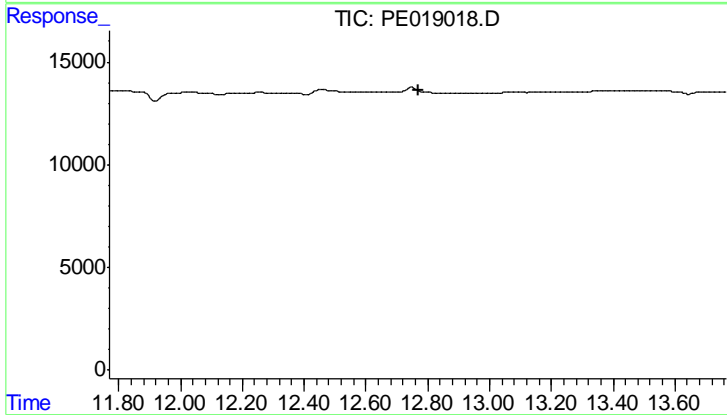
R.T.: 10.219 min
 Delta R.T.: -0.026 min
 Response: 64193
 Conc: 487.23 ng/ml

Instrument :
 ECD_E
 ClientSampleId :
 WC-04(0-5)



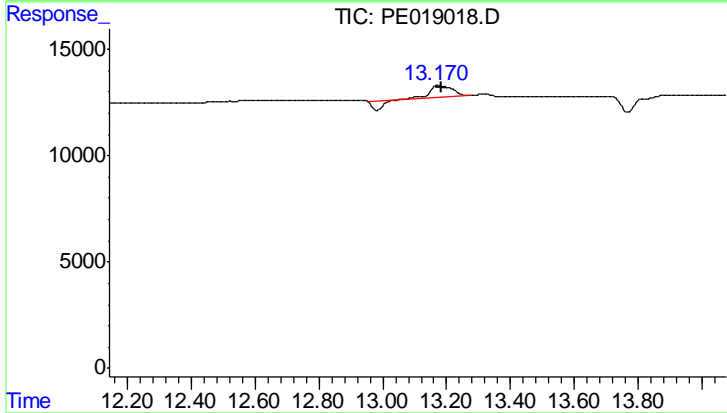
#4 2,4-DCAA

R.T.: 10.819 min
 Delta R.T.: -0.022 min
 Response: 48435
 Conc: 244.20 ng/ml



#10 Pentachlorophenol

R.T.: 0.000 min
 Exp R.T. : 12.769 min
 Response: 0
 Conc: N.D.



#10 Pentachlorophenol

R.T.: 13.171 min
 Delta R.T.: -0.012 min
 Response: 19908
 Conc: 6.26 ng/ml