

Data Path : P:\HPCHEM1\ECD_E\Data\PE012918\
 Data File : PE019029.D
 Signal(s) : Signal #1: ECD1A.CH Signal #2: ECD2B.CH
 Acq On : 30 Jan 2018 3:19
 Operator : UA/AJ
 Sample : I.BLK
 Misc :
 ALS Vial : 2 Sample Multiplier: 1

Instrument :
 ECD_E
 ClientSampleId :
 I.BLK

Integration File signal 1: autoint1.e
 Integration File signal 2: autoint2.e
 Quant Time: Jan 30 07:08:24 2018
 Quant Method : P:\HPCHEM1\ECD_E\Method\PE012618.M
 Quant Title : 8080.M
 QLast Update : Sat Jan 27 02:21:44 2018
 Response via : Initial Calibration
 Integrator: ChemStation

Volume Inj. : 2 µl
 Signal #1 Phase : ZB-35-HT Inferno Signal #2 Phase: ZB-XLB-HT Infernon
 Signal #1 Info : 30M x 0.25mm x0.2 Signal #2 Info : 30M x 0.25mm x 0.25µm

Compound	RT#1	RT#2	Resp#1	Resp#2	ng/ml	ng/ml

System Monitoring Compounds						
4) S 2,4-DCAA	10.212	10.813	60392	45171	458.375	227.744 #

Target Compounds

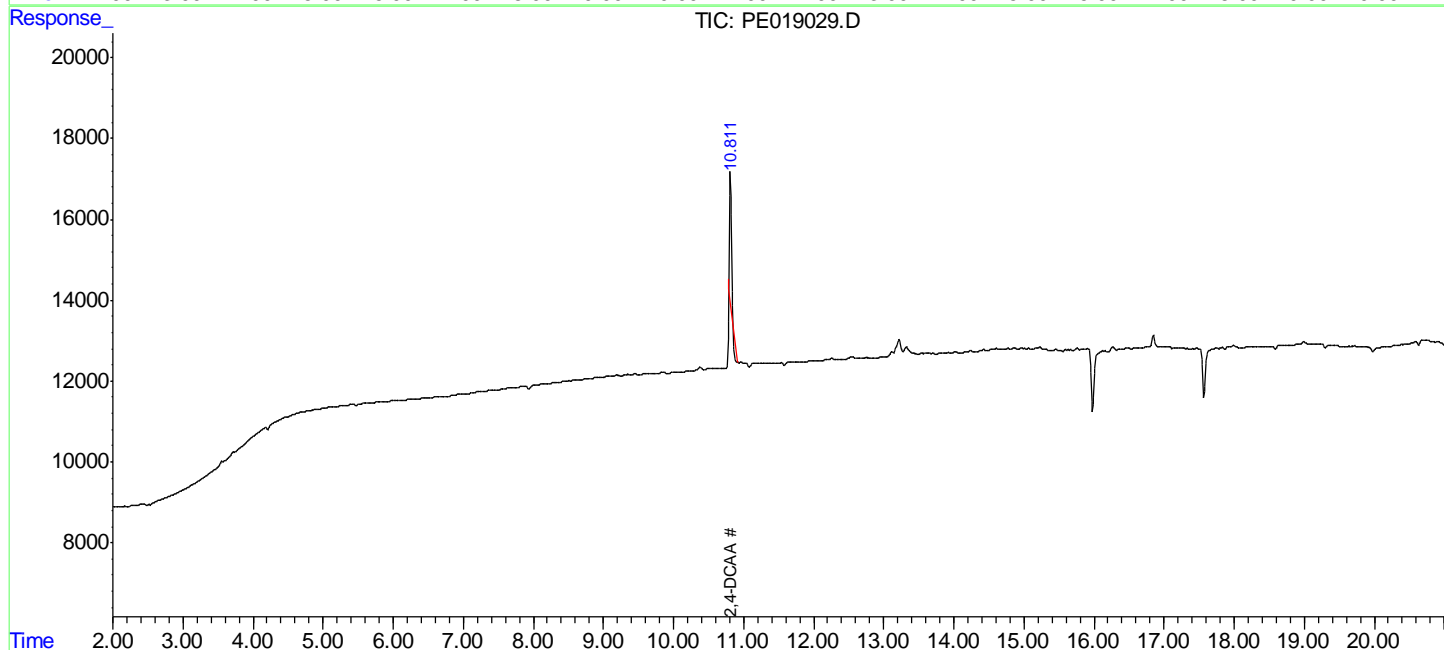
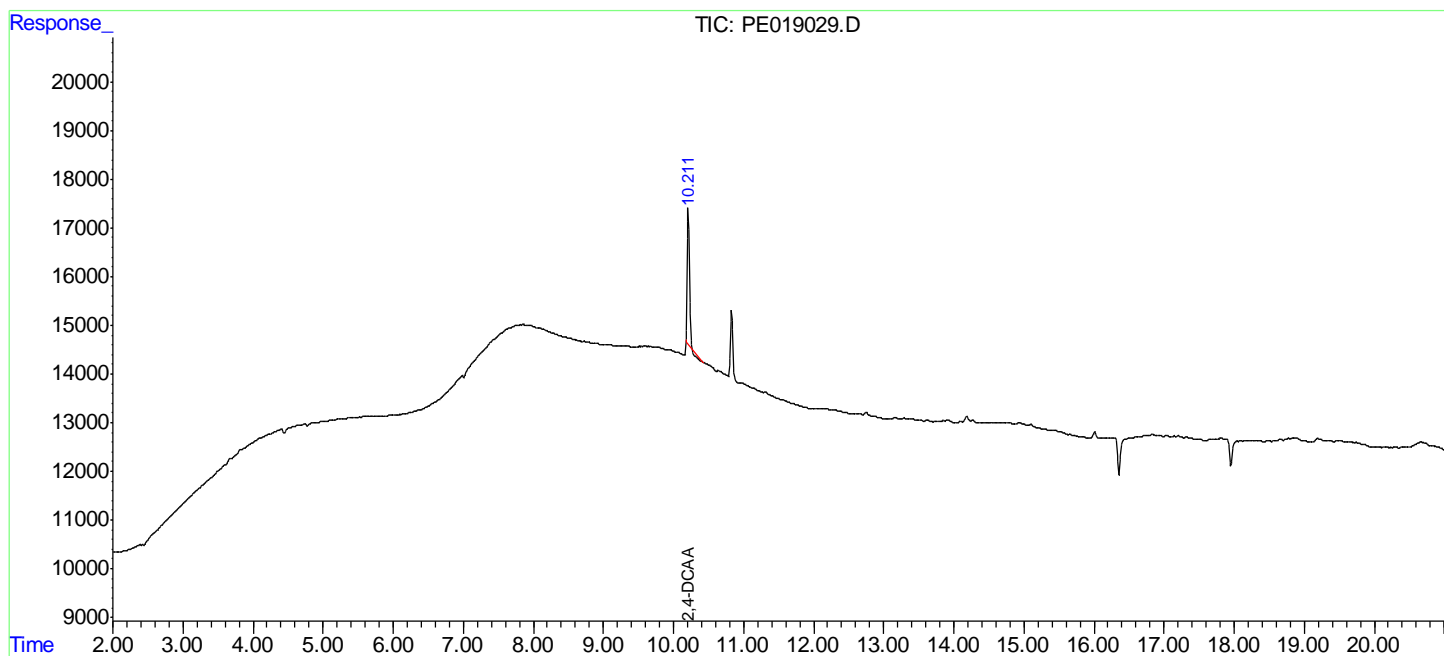
 (f)=RT Delta > 1/2 Window (#)=Amounts differ by > 25% (m)=manual int.

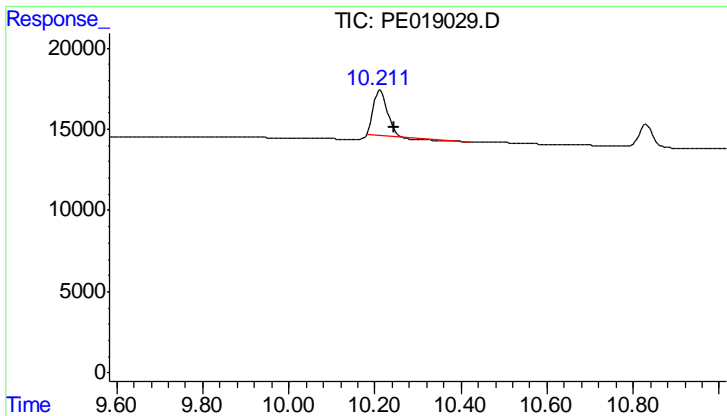
Data Path : P:\HPCHEM1\ECD_E\Data\PE012918\
 Data File : PE019029.D
 Signal(s) : Signal #1: ECD1A.CH Signal #2: ECD2B.CH
 Acq On : 30 Jan 2018 3:19
 Operator : UA/AJ
 Sample : I.BLK
 Misc :
 ALS Vial : 2 Sample Multiplier: 1

Instrument :
 ECD_E
 ClientSampled :
 I.BLK

Integration File signal 1: autoint1.e
 Integration File signal 2: autoint2.e
 Quant Time: Jan 30 07:08:24 2018
 Quant Method : P:\HPCHEM1\ECD_E\Method\PE012618.M
 Quant Title : 8080.M
 QLast Update : Sat Jan 27 02:21:44 2018
 Response via : Initial Calibration
 Integrator: ChemStation

Volume Inj. : 2 µl
 Signal #1 Phase : ZB-35-HT Inferno Signal #2 Phase: ZB-XLB-HT Infernon
 Signal #1 Info : 30M x 0.25mm x0.2 Signal #2 Info : 30M x 0.25mm x 0.25µm

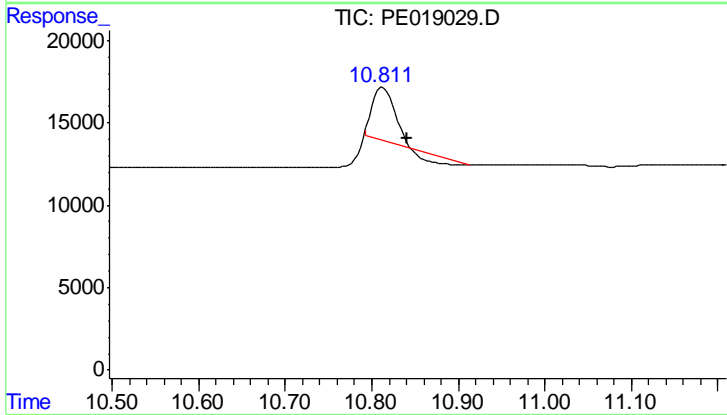




#4 2,4-DCAA

R.T.: 10.212 min
Delta R.T.: -0.033 min
Response: 60392
Conc: 458.38 ng/ml

Instrument :
ECD_E
ClientSampleId :
I.BLK



#4 2,4-DCAA

R.T.: 10.813 min
Delta R.T.: -0.028 min
Response: 45171
Conc: 227.74 ng/ml