

Data Path : P:\HPCHEM1\ECD_E\Data\PE012918\
 Data File : PE019033.D
 Signal(s) : Signal #1: ECD1A.CH Signal #2: ECD2B.CH
 Acq On : 30 Jan 2018 5:12
 Operator : UA/AJ
 Sample : J1257-05
 Misc :
 ALS Vial : 30 Sample Multiplier: 1

Instrument :
 ECD_E
 ClientSampleId :
 WC-13(0-5)

Integration File signal 1: autoint1.e
 Integration File signal 2: autoint2.e
 Quant Time: Jan 30 07:09:15 2018
 Quant Method : P:\HPCHEM1\ECD_E\Method\PE012618.M
 Quant Title : 8080.M
 QLast Update : Sat Jan 27 02:21:44 2018
 Response via : Initial Calibration
 Integrator: ChemStation

Volume Inj. : 2 µl
 Signal #1 Phase : ZB-35-HT Inferno Signal #2 Phase: ZB-XLB-HT Infernon
 Signal #1 Info : 30M x 0.25mm x0.2 Signal #2 Info : 30M x 0.25mm x 0.25µm

Compound	RT#1	RT#2	Resp#1	Resp#2	ng/ml	ng/ml

System Monitoring Compounds						
4) S 2,4-DCAA	10.219	0.000	97402	0	739.283	N.D. #
Target Compounds						
1) T Dalapon	2.938	0.000	16435	0	72.254	N.D. #
2) T 3,5-DICHL...	0.000	9.234	0	15950	N.D.	49.596 #
3) T 4-Nitroph...	9.305	0.000	4700	0	33.128	N.D. #
14) T DINOSEB	0.000	14.387	0	27235	N.D.	32.232 #

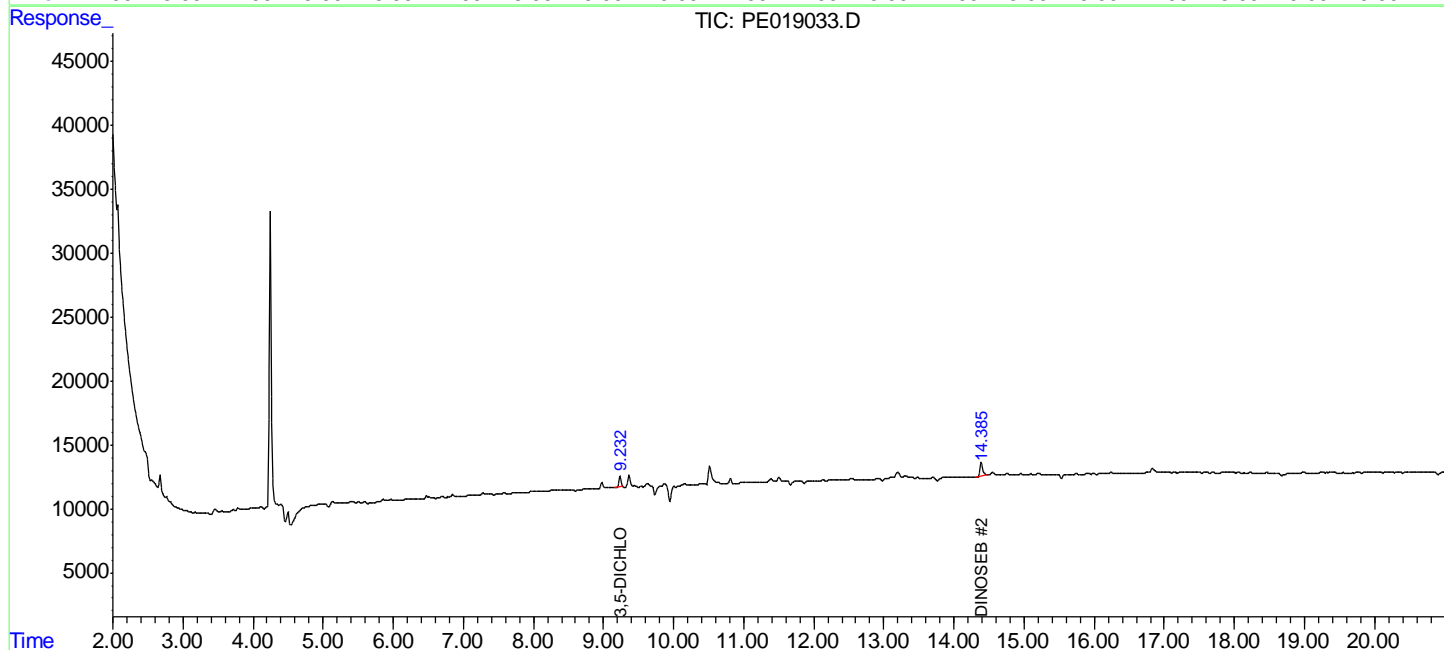
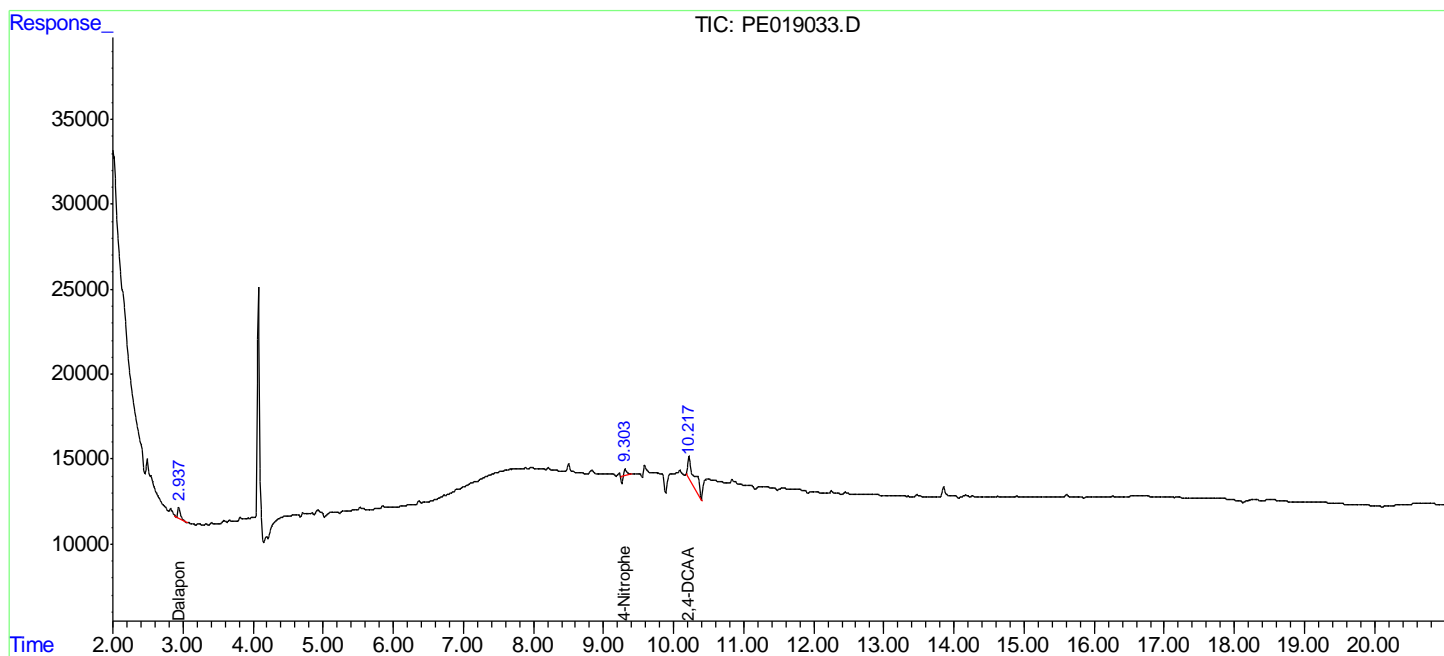
(f)=RT Delta > 1/2 Window (#)=Amounts differ by > 25% (m)=manual int.

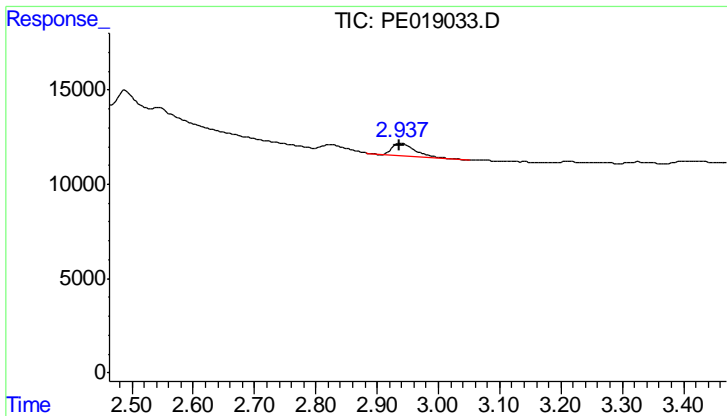
Data Path : P:\HPCHEM1\ECD_E\Data\PE012918\
 Data File : PE019033.D
 Signal(s) : Signal #1: ECD1A.CH Signal #2: ECD2B.CH
 Acq On : 30 Jan 2018 5:12
 Operator : UA/AJ
 Sample : J1257-05
 Misc :
 ALS Vial : 30 Sample Multiplier: 1

Instrument :
 ECD_E
 ClientSampled :
 WC-13(0-5)

Integration File signal 1: autoint1.e
 Integration File signal 2: autoint2.e
 Quant Time: Jan 30 07:09:15 2018
 Quant Method : P:\HPCHEM1\ECD_E\Method\PE012618.M
 Quant Title : 8080.M
 QLast Update : Sat Jan 27 02:21:44 2018
 Response via : Initial Calibration
 Integrator: ChemStation

Volume Inj. : 2 µl
 Signal #1 Phase : ZB-35-HT Inferno Signal #2 Phase: ZB-XLB-HT Infernon
 Signal #1 Info : 30M x 0.25mm x0.2 Signal #2 Info : 30M x 0.25mm x 0.25µm

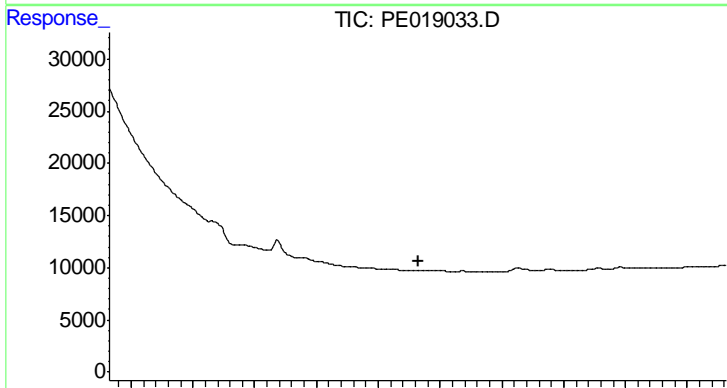




#1 Dalapon

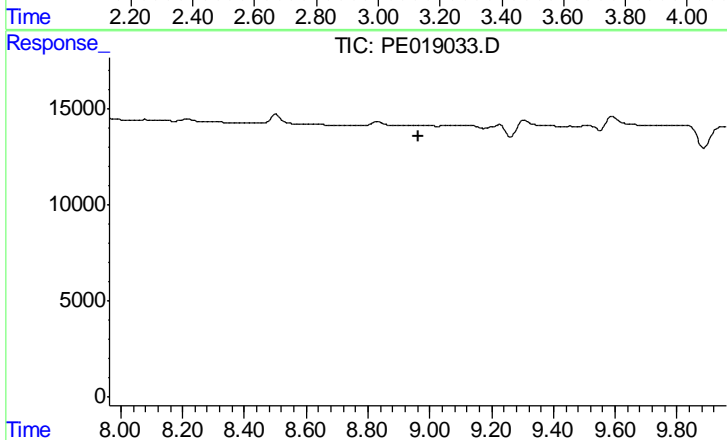
R.T.: 2.938 min
 Delta R.T.: 0.002 min
 Response: 16435
 Conc: 72.25 ng/ml

Instrument :
 ECD_E
 ClientSampled :
 WC-13(0-5)



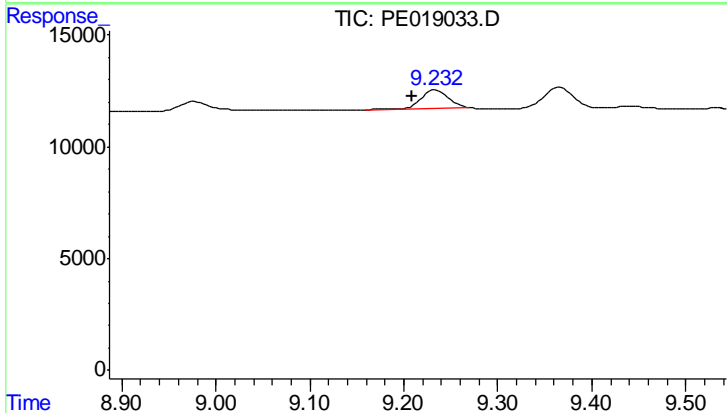
#1 Dalapon

R.T.: 0.000 min
 Exp R.T. : 3.129 min
 Response: 0
 Conc: N.D.



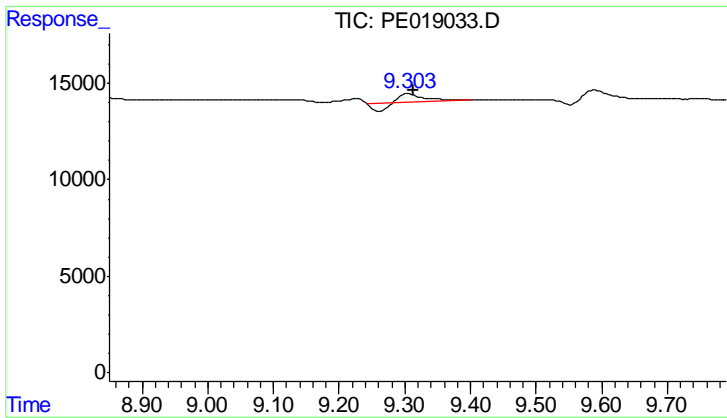
#2 3,5-DICHLOROBENZOIC ACID

R.T.: 0.000 min
 Exp R.T. : 8.962 min
 Response: 0
 Conc: N.D.



#2 3,5-DICHLOROBENZOIC ACID

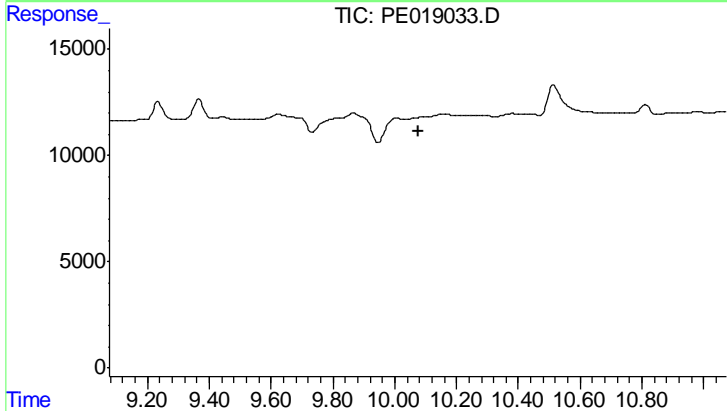
R.T.: 9.234 min
 Delta R.T.: 0.025 min
 Response: 15950
 Conc: 49.60 ng/ml



#3 4-Nitrophenol

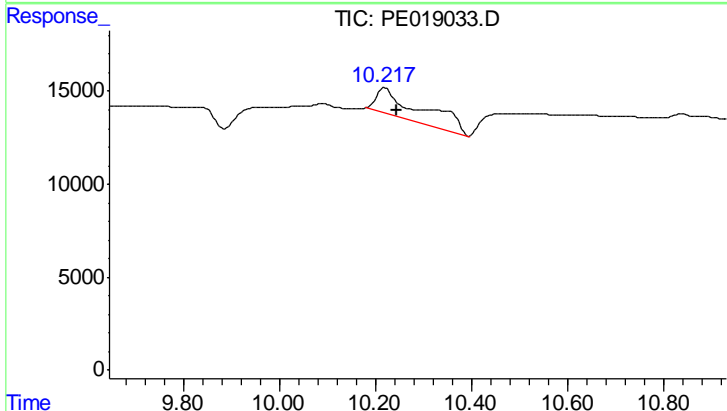
R.T.: 9.305 min
 Delta R.T.: -0.007 min
 Response: 4700
 Conc: 33.13 ng/ml

Instrument :
 ECD_E
 ClientSampleId :
 WC-13(0-5)



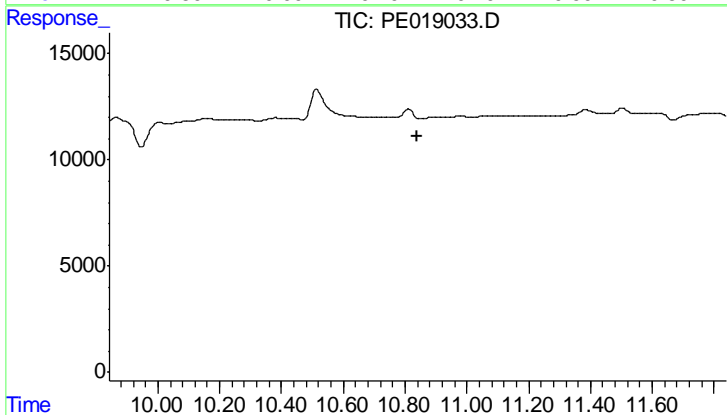
#3 4-Nitrophenol

R.T.: 0.000 min
 Exp R.T.: 10.076 min
 Response: 0
 Conc: N.D.



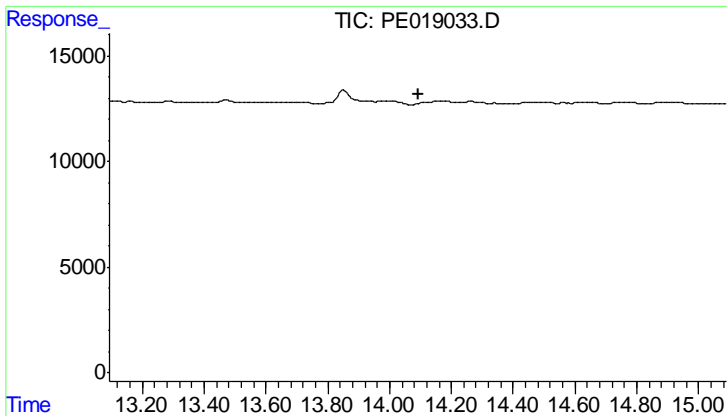
#4 2,4-DCAA

R.T.: 10.219 min
 Delta R.T.: -0.026 min
 Response: 97402
 Conc: 739.28 ng/ml



#4 2,4-DCAA

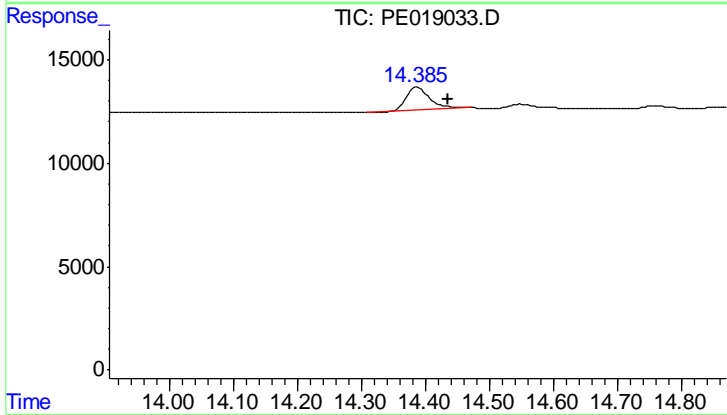
R.T.: 0.000 min
 Exp R.T.: 10.841 min
 Response: 0
 Conc: N.D.



#14 DINOSEB

R.T.: 0.000 min
 Exp R.T.: 14.093 min
 Response: 0
 Conc: N.D.

Instrument :
 ECD_E
 ClientSampleId :
 WC-13(0-5)



#14 DINOSEB

R.T.: 14.387 min
 Delta R.T.: -0.048 min
 Response: 27235
 Conc: 32.23 ng/ml