

Data Path : P:\HPCHEM1\ECD E\Data\PE101017\  
 Data File : PE017090.D  
 Signal(s) : Signal #1: ECD1A.CH Signal #2: ECD2B.CH  
 Acq On : 10 Oct 2017 22:24  
 Operator : UA/AJ  
 Sample : PB102858BS  
 Misc :  
 ALS Vial : 19 Sample Multiplier: 1

Instrument :  
 ECD\_E  
 ClientSampleId :

Integration File signal 1: autoint1.e  
 Integration File signal 2: autoint2.e  
 Quant Time: Oct 11 01:23:40 2017  
 Quant Method : P:\HPCHEM1\ECD\_E\Method\PE100417.M  
 Quant Title : 8080.M  
 QLast Update : Thu Oct 05 09:47:18 2017  
 Response via : Initial Calibration  
 Integrator: ChemStation

Volume Inj. : 2 ul  
 Signal #1 Phase : ZB-35-HT Inferno Signal #2 Phase: ZB-XLB-HT Inferno  
 Signal #1 Info : 30M x 0.25mm x0.2 Signal #2 Info : 30M x 0.25mm x 0.25µm

Compound	RT#1	RT#2	Resp#1	Resp#2	ng/ml	ng/ml
-----						
System Monitoring Compounds						
4) S 2,4-DCAA	10.042	10.520	-9279	100706	N.D.	646.301
Target Compounds						
1) T Dalapon	2.741	2.919	119813	165281	466.803	519.512
2) T 3,5-DICHL...	8.656	8.891	93538	156032	562.124	574.157
3) T 4-Nitroph...	9.001	9.747	58563	103293	569.944	593.960
5) T DICAMBA	10.042	10.673	-9279	269710	N.D.	413.477
8) T DICHLORPROP	11.083	11.633	86913	138834	625.998	620.420
9) T 2,4-D	11.436	12.192	130738	193331	634.243	625.081
10) T Pentachlo...	12.572	0.000	484966	0	298.449	N.D. #
14) T DINOSEB	13.881	0.000	13459	0	19.126	N.D. #
-----						

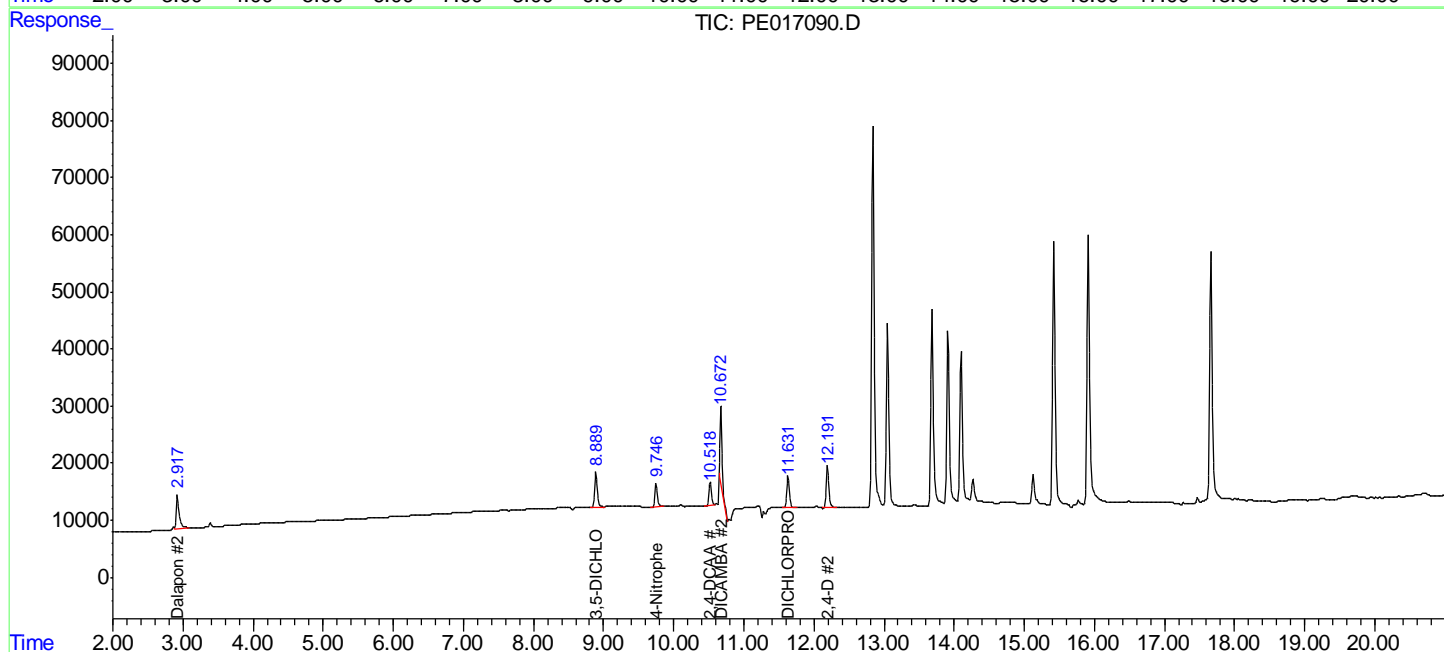
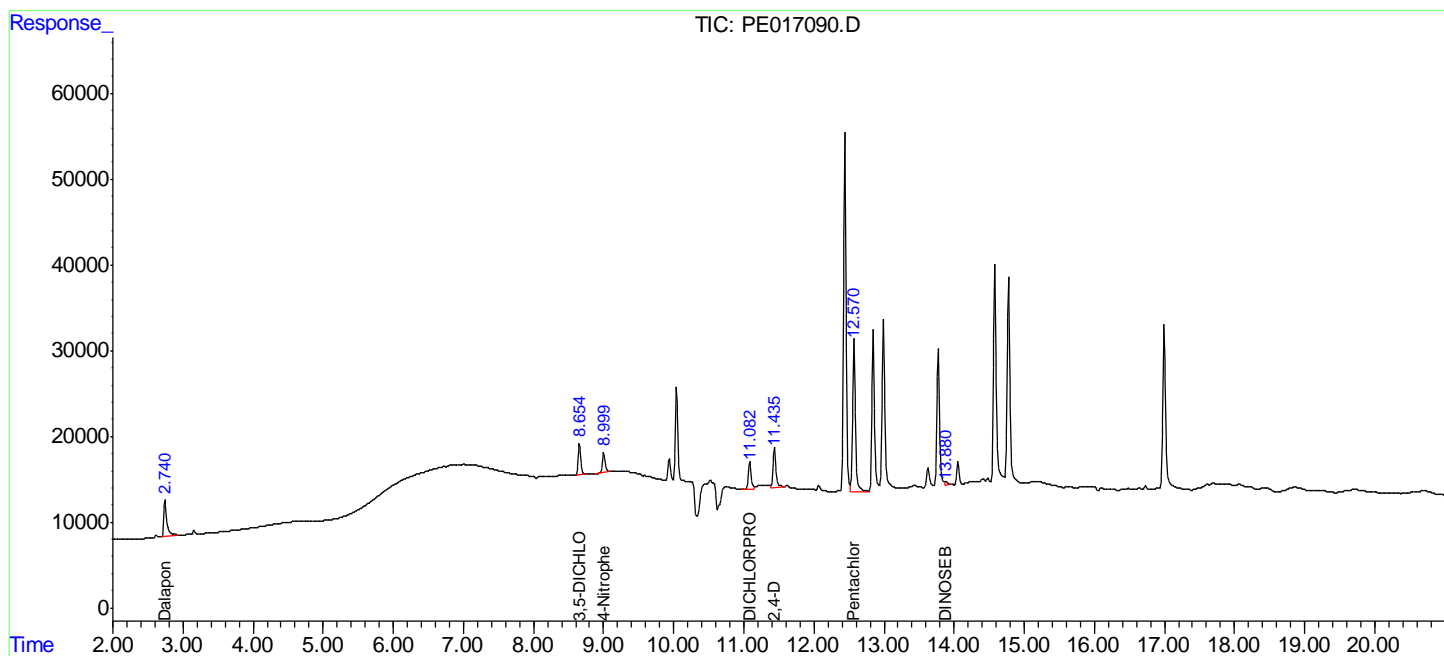
(f)=RT Delta > 1/2 Window (#)=Amounts differ by > 25% (m)=manual int.

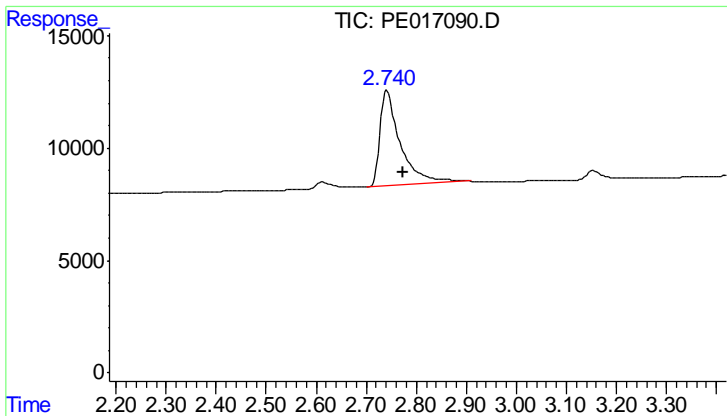
Data Path : P:\HPCHEM1\ECD E\Data\PE101017\  
 Data File : PE017090.D  
 Signal(s) : Signal #1: ECD1A.CH Signal #2: ECD2B.CH  
 Acq On : 10 Oct 2017 22:24  
 Operator : UA/AJ  
 Sample : PB102858BS  
 Misc :  
 ALS Vial : 19 Sample Multiplier: 1

Instrument :  
 ECD\_E  
 ClientSampled :

Integration File signal 1: autoint1.e  
 Integration File signal 2: autoint2.e  
 Quant Time: Oct 11 01:23:40 2017  
 Quant Method : P:\HPCHEM1\ECD\_E\Method\PE100417.M  
 Quant Title : 8080.M  
 QLast Update : Thu Oct 05 09:47:18 2017  
 Response via : Initial Calibration  
 Integrator: ChemStation

Volume Inj. : 2 ul  
 Signal #1 Phase : ZB-35-HT Inferno Signal #2 Phase: ZB-XLB-HT Inferno  
 Signal #1 Info : 30M x 0.25mm x0.2 Signal #2 Info : 30M x 0.25mm x 0.25µm

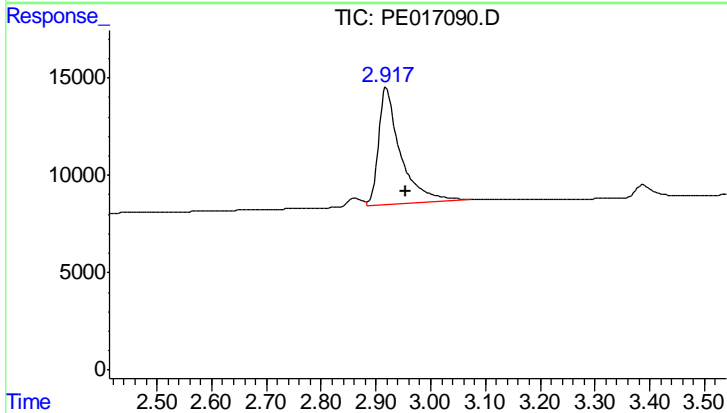




#1 Dalapon

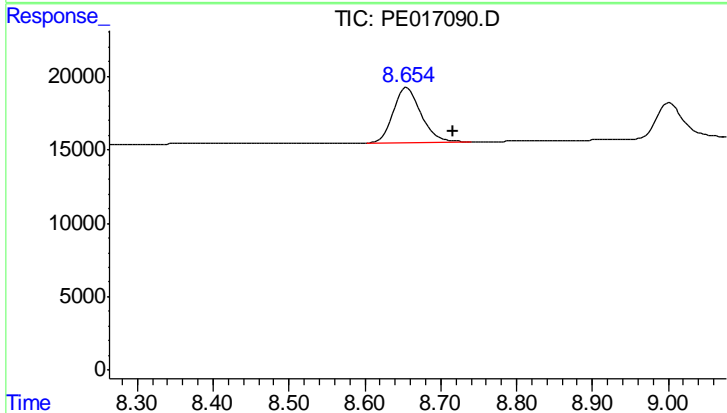
R.T.: 2.741 min  
 Delta R.T.: -0.034 min  
 Response: 119813  
 Conc: 466.80 ng/ml

Instrument :  
 ECD\_E  
 ClientSampled :



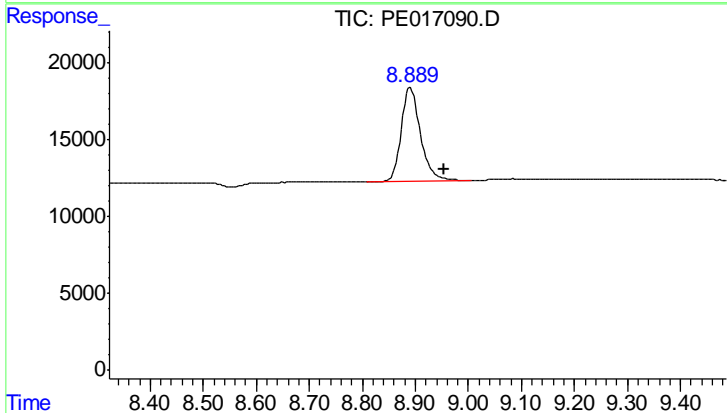
#1 Dalapon

R.T.: 2.919 min  
 Delta R.T.: -0.035 min  
 Response: 165281  
 Conc: 519.51 ng/ml



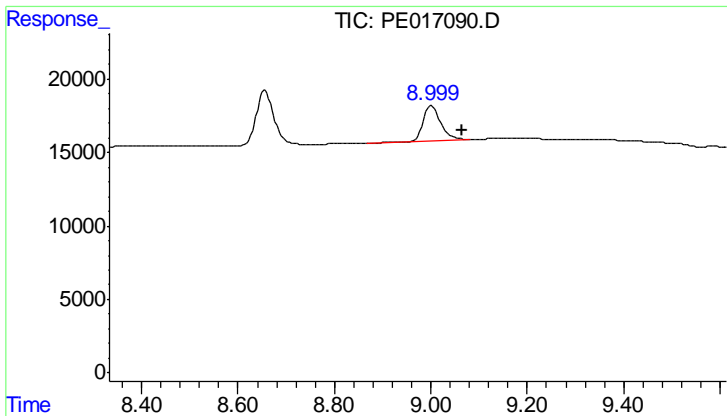
#2 3,5-DICHLOROBENZOIC ACID

R.T.: 8.656 min  
 Delta R.T.: -0.061 min  
 Response: 93538  
 Conc: 562.12 ng/ml



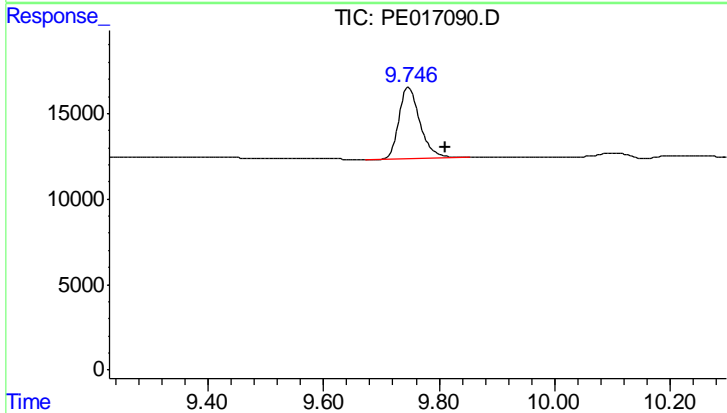
#2 3,5-DICHLOROBENZOIC ACID

R.T.: 8.891 min  
 Delta R.T.: -0.063 min  
 Response: 156032  
 Conc: 574.16 ng/ml

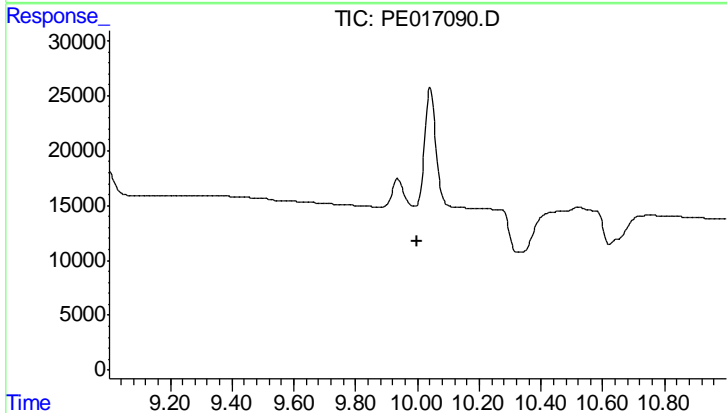


#3 4-Nitrophenol  
 R.T.: 9.001 min  
 Delta R.T.: -0.063 min  
 Response: 58563  
 Conc: 569.94 ng/ml

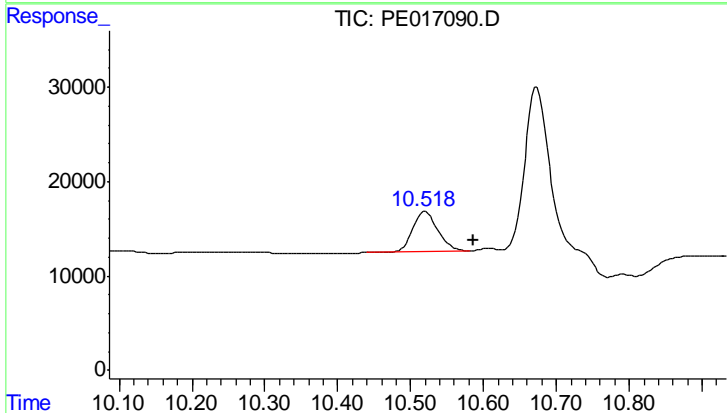
Instrument :  
 ECD\_E  
 ClientSampled :



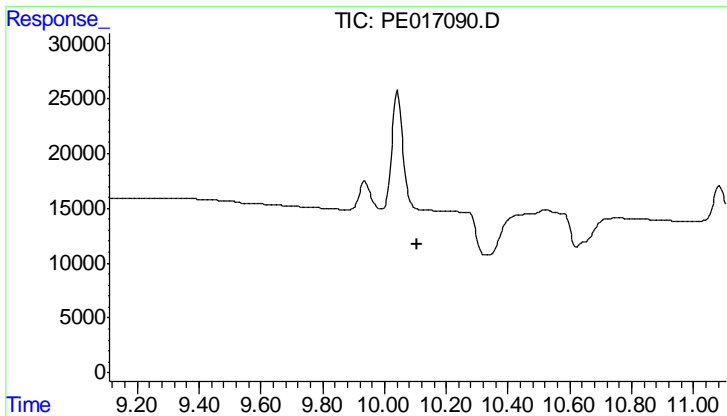
#3 4-Nitrophenol  
 R.T.: 9.747 min  
 Delta R.T.: -0.065 min  
 Response: 103293  
 Conc: 593.96 ng/ml



#4 2,4-DCAA  
 R.T.: 10.042 min  
 Delta R.T.: 0.041 min  
 Response: -9279  
 Conc: N.D.



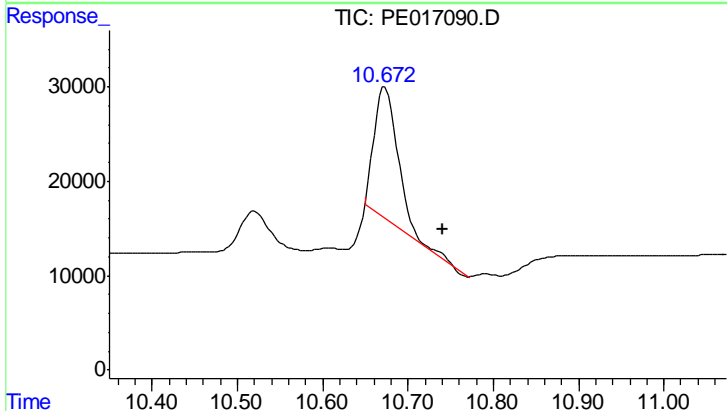
#4 2,4-DCAA  
 R.T.: 10.520 min  
 Delta R.T.: -0.066 min  
 Response: 100706  
 Conc: 646.30 ng/ml



#5 DICAMBA

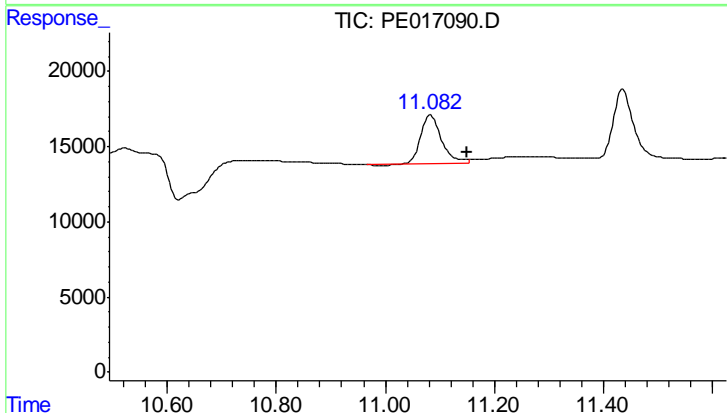
R.T.: 10.042 min  
 Delta R.T.: -0.065 min  
 Response: -9279  
 Conc: N.D.

Instrument :  
 ECD\_E  
 ClientSampleId :



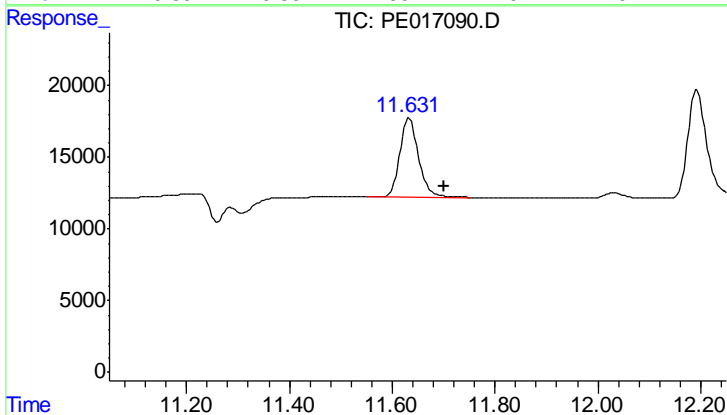
#5 DICAMBA

R.T.: 10.673 min  
 Delta R.T.: -0.068 min  
 Response: 269710  
 Conc: 413.48 ng/ml



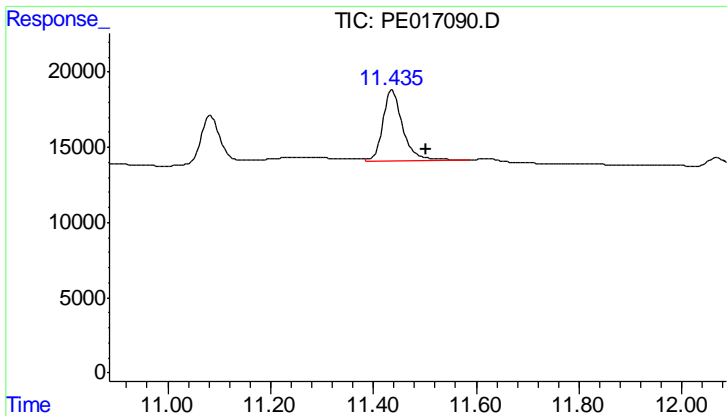
#8 DICHLORPROP

R.T.: 11.083 min  
 Delta R.T.: -0.068 min  
 Response: 86913  
 Conc: 626.00 ng/ml



#8 DICHLORPROP

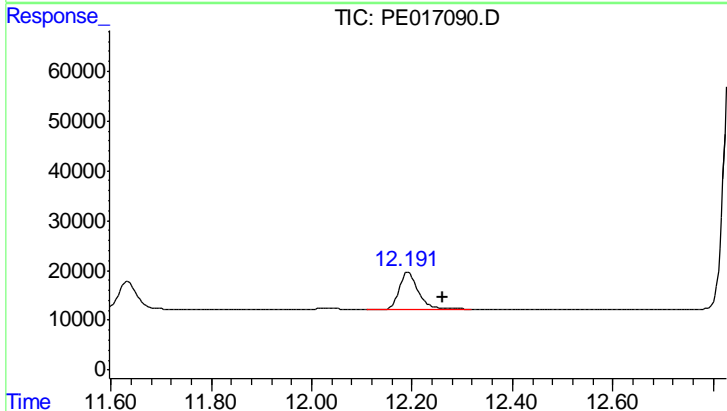
R.T.: 11.633 min  
 Delta R.T.: -0.068 min  
 Response: 138834  
 Conc: 620.42 ng/ml



#9 2,4-D

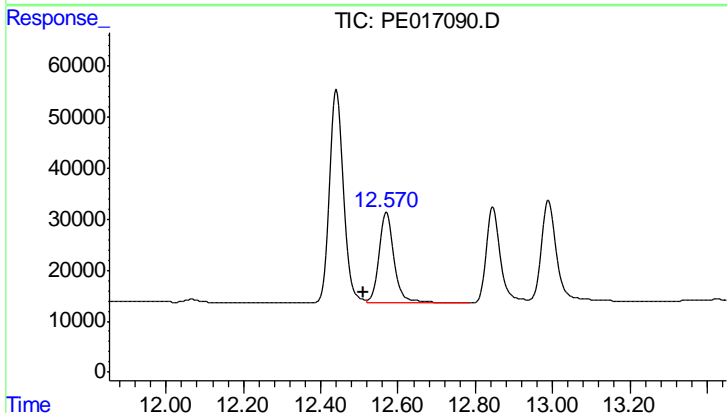
R.T.: 11.436 min  
 Delta R.T.: -0.068 min  
 Response: 130738  
 Conc: 634.24 ng/ml

Instrument :  
 ECD\_E  
 ClientSampleId :



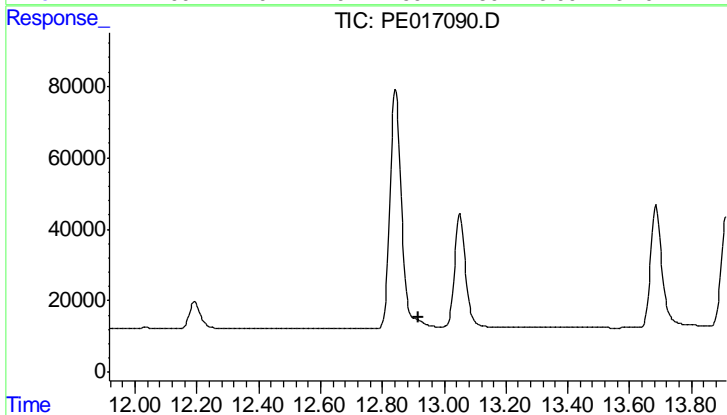
#9 2,4-D

R.T.: 12.192 min  
 Delta R.T.: -0.070 min  
 Response: 193331  
 Conc: 625.08 ng/ml



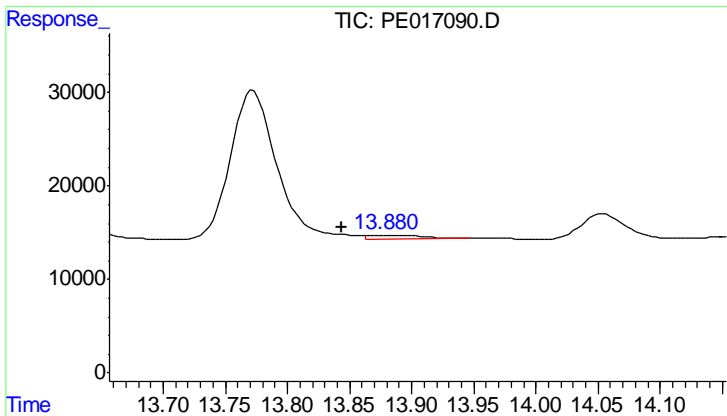
#10 Pentachlorophenol

R.T.: 12.572 min  
 Delta R.T.: 0.060 min  
 Response: 484966  
 Conc: 298.45 ng/ml



#10 Pentachlorophenol

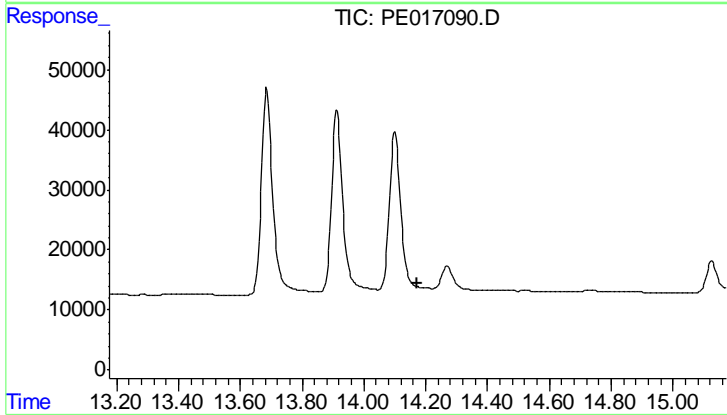
R.T.: 0.000 min  
 Exp R.T. : 12.916 min  
 Response: 0  
 Conc: N.D.



#14 DINOSEB

R.T.: 13.881 min  
 Delta R.T.: 0.037 min  
 Response: 13459  
 Conc: 19.13 ng/ml

Instrument :  
 ECD\_E  
 ClientSampleId :



#14 DINOSEB

R.T.: 0.000 min  
 Exp R.T. : 14.174 min  
 Response: 0  
 Conc: N.D.