

Data Path : P:\HPCHEM1\ECD_E\Data\PE101217\
 Data File : PE017123.D
 Signal(s) : Signal #1: ECD1A.CH Signal #2: ECD2B.CH
 Acq On : 12 Oct 2017 11:52
 Operator : UA/AJ
 Sample : HEXANE
 Misc :
 ALS Vial : 1 Sample Multiplier: 1

Instrument :
 ECD_E
 ClientSampleId :
 HEXANE

Integration File signal 1: autoint1.e
 Integration File signal 2: autoint2.e
 Quant Time: Oct 13 05:34:25 2017
 Quant Method : P:\HPCHEM1\ECD_E\Method\PE101217.M
 Quant Title : 8080.M
 QLast Update : Fri Oct 13 05:30:29 2017
 Response via : Initial Calibration
 Integrator: ChemStation

Volume Inj. : 2 µl
 Signal #1 Phase : ZB-35-HT Inferno Signal #2 Phase: ZB-XLB-HT Infernon
 Signal #1 Info : 30M x 0.25mm x0.2 Signal #2 Info : 30M x 0.25mm x 0.25µm

Compound	RT#1	RT#2	Resp#1	Resp#2	ng/ml	ng/ml

System Monitoring Compounds						
4) S 2,4-DCAA	10.522	0.000	311843	0	3310.960	N.D. #
Target Compounds						
5) T DICAMBA	10.522	0.000	311843	0	887.058	N.D. #
9) T 2,4-D	0.000	12.773	0	189991	N.D.	946.005 #
14) T DINOSEB	0.000	14.691	0	37210	N.D.	50.499 #
15) T Picloram	15.076	16.491	-8992	51435	N.D.	45.344

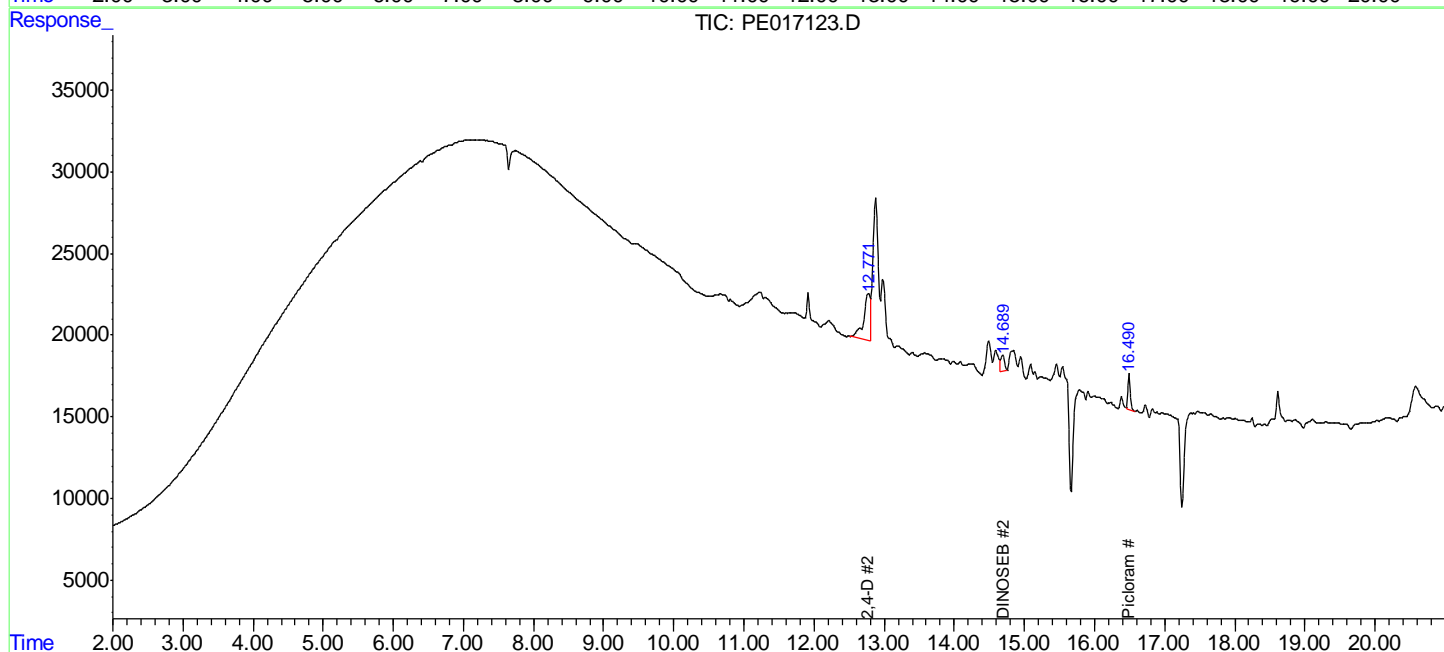
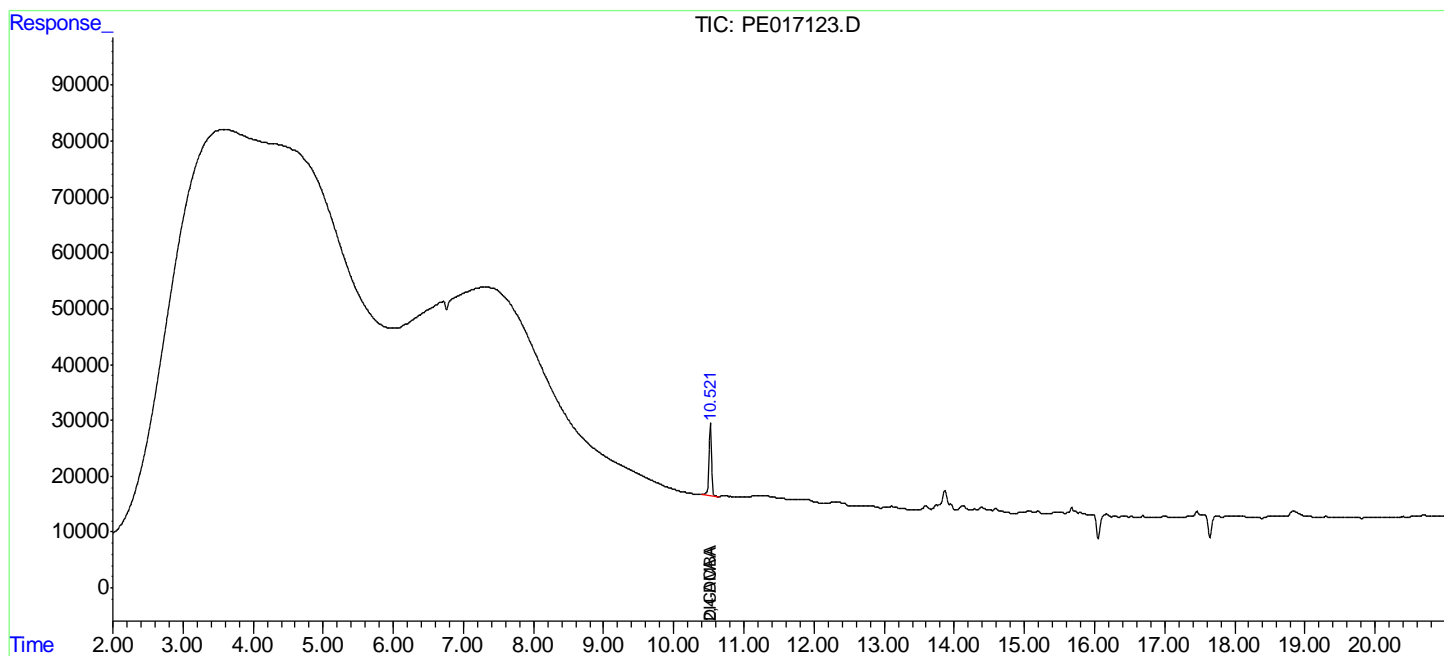
(f)=RT Delta > 1/2 Window (#)=Amounts differ by > 25% (m)=manual int.

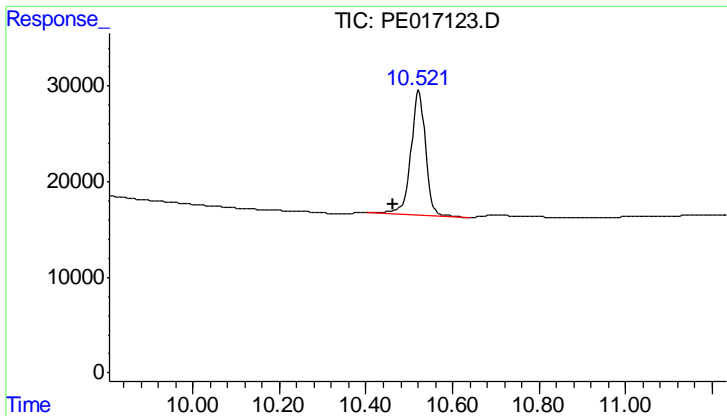
Data Path : P:\HPCHEM1\ECD_E\Data\PE101217\
 Data File : PE017123.D
 Signal(s) : Signal #1: ECD1A.CH Signal #2: ECD2B.CH
 Acq On : 12 Oct 2017 11:52
 Operator : UA/AJ
 Sample : HEXANE
 Misc :
 ALS Vial : 1 Sample Multiplier: 1

Instrument :
 ECD_E
 ClientSampleId :
 HEXANE

Integration File signal 1: autoint1.e
 Integration File signal 2: autoint2.e
 Quant Time: Oct 13 05:34:25 2017
 Quant Method : P:\HPCHEM1\ECD_E\Method\PE101217.M
 Quant Title : 8080.M
 QLast Update : Fri Oct 13 05:30:29 2017
 Response via : Initial Calibration
 Integrator: ChemStation

Volume Inj. : 2 µl
 Signal #1 Phase : ZB-35-HT Inferno Signal #2 Phase: ZB-XLB-HT Inferno
 Signal #1 Info : 30M x 0.25mm x0.2 Signal #2 Info : 30M x 0.25mm x 0.25µm

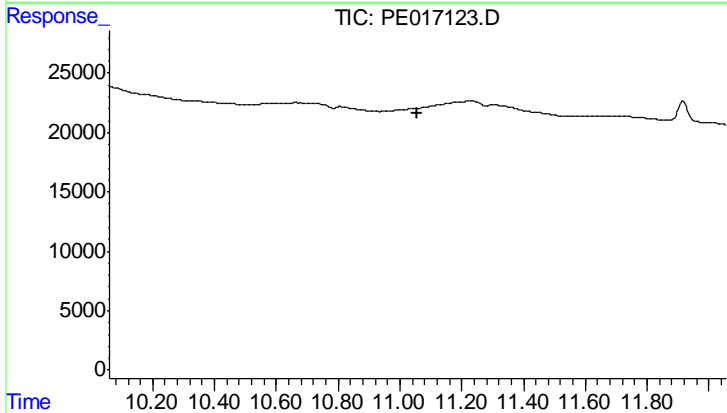




#4 2,4-DCAA

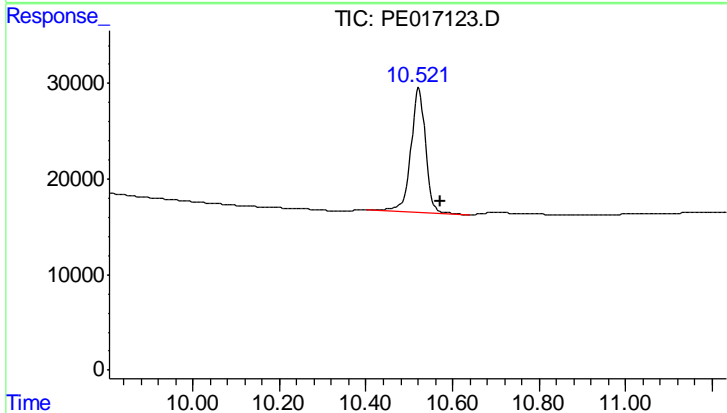
R.T.: 10.522 min
 Delta R.T.: 0.061 min
 Response: 311843
 Conc: 3310.96 ng/ml

Instrument :
 ECD_E
 ClientSampleId :
 HEXANE



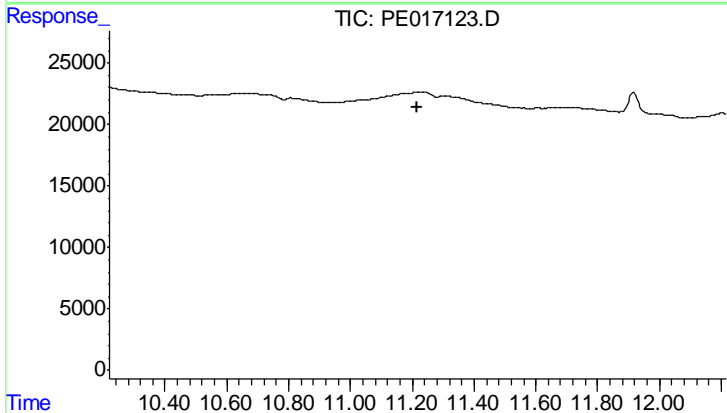
#4 2,4-DCAA

R.T.: 0.000 min
 Exp R.T.: 11.058 min
 Response: 0
 Conc: N.D.



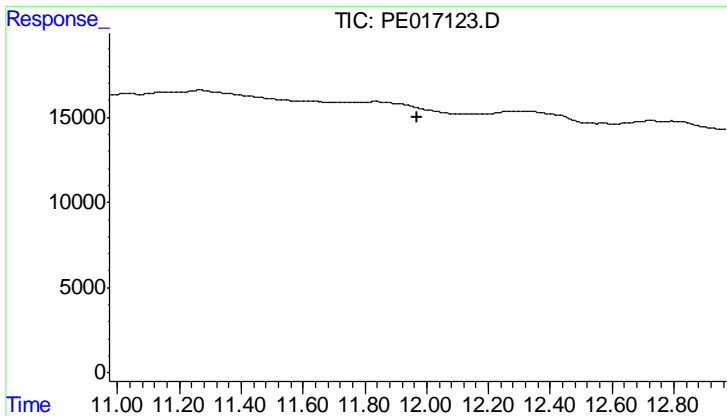
#5 DICAMBA

R.T.: 10.522 min
 Delta R.T.: -0.049 min
 Response: 311843
 Conc: 887.06 ng/ml



#5 DICAMBA

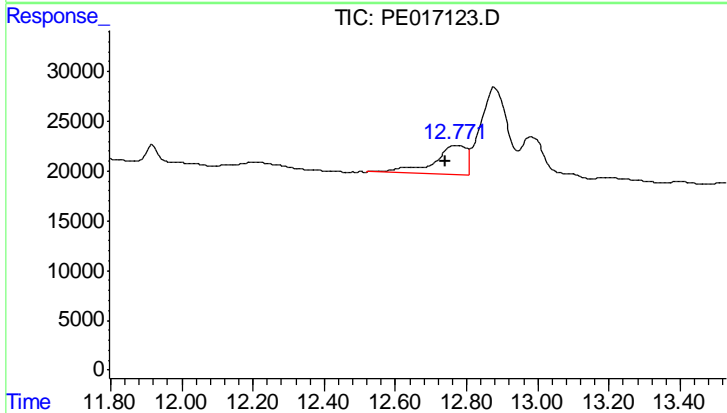
R.T.: 0.000 min
 Exp R.T.: 11.217 min
 Response: 0
 Conc: N.D.



#9 2,4-D

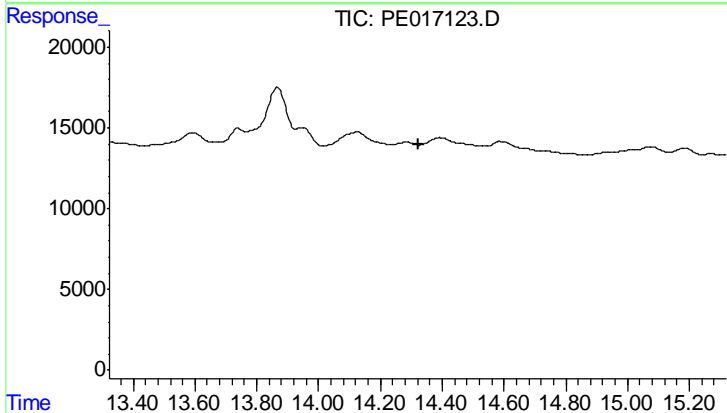
R.T.: 0.000 min
 Exp R.T.: 11.971 min
 Response: 0
 Conc: N.D.

Instrument :
 ECD_E
 ClientSampleId :
 HEXANE



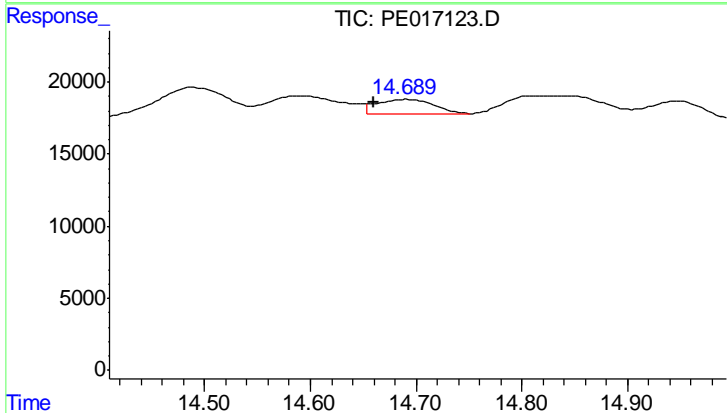
#9 2,4-D

R.T.: 12.773 min
 Delta R.T.: 0.031 min
 Response: 189991
 Conc: 946.00 ng/ml



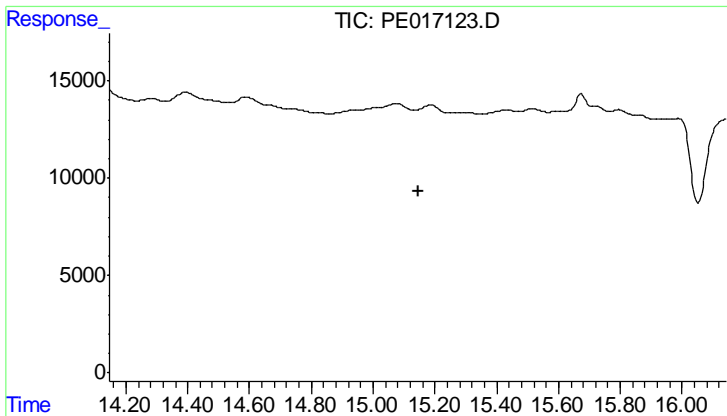
#14 DINOSEB

R.T.: 0.000 min
 Exp R.T.: 14.322 min
 Response: 0
 Conc: N.D.



#14 DINOSEB

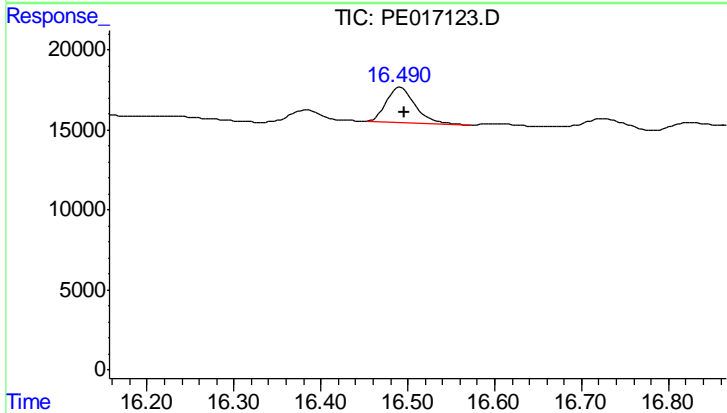
R.T.: 14.691 min
 Delta R.T.: 0.031 min
 Response: 37210
 Conc: 50.50 ng/ml



#15 Picloram

R.T.: 15.076 min
 Delta R.T.: -0.069 min
 Response: -8992
 Conc: N.D.

Instrument :
 ECD_E
 ClientSampleId :
 HEXANE



#15 Picloram

R.T.: 16.491 min
 Delta R.T.: -0.005 min
 Response: 51435
 Conc: 45.34 ng/ml