

Data Path : P:\HPCHEM1\ECD_E\Data\PE101217\
 Data File : PE017124.D
 Signal(s) : Signal #1: ECD1A.CH Signal #2: ECD2B.CH
 Acq On : 12 Oct 2017 17:22
 Operator : UA/AJ
 Sample : I.BLK
 Misc :
 ALS Vial : 2 Sample Multiplier: 1

Instrument :
 ECD_E
 ClientSampleId :
 I.BLK

Integration File signal 1: autoint1.e
 Integration File signal 2: autoint2.e
 Quant Time: Oct 13 05:34:36 2017
 Quant Method : P:\HPCHEM1\ECD_E\Method\PE101217.M
 Quant Title : 8080.M
 QLast Update : Fri Oct 13 05:30:29 2017
 Response via : Initial Calibration
 Integrator: ChemStation

Volume Inj. : 2 µl
 Signal #1 Phase : ZB-35-HT Inferno Signal #2 Phase: ZB-XLB-HT Infernon
 Signal #1 Info : 30M x 0.25mm x0.2 Signal #2 Info : 30M x 0.25mm x 0.25µm

	Compound	RT#1	RT#2	Resp#1	Resp#2	ng/ml	ng/ml

System Monitoring Compounds							
4)	S 2,4-DCAA	10.486	11.081	71255	82962	756.545	573.702
Target Compounds							
15)	T Picloram	0.000	16.533	0	30049	N.D.	26.491 #

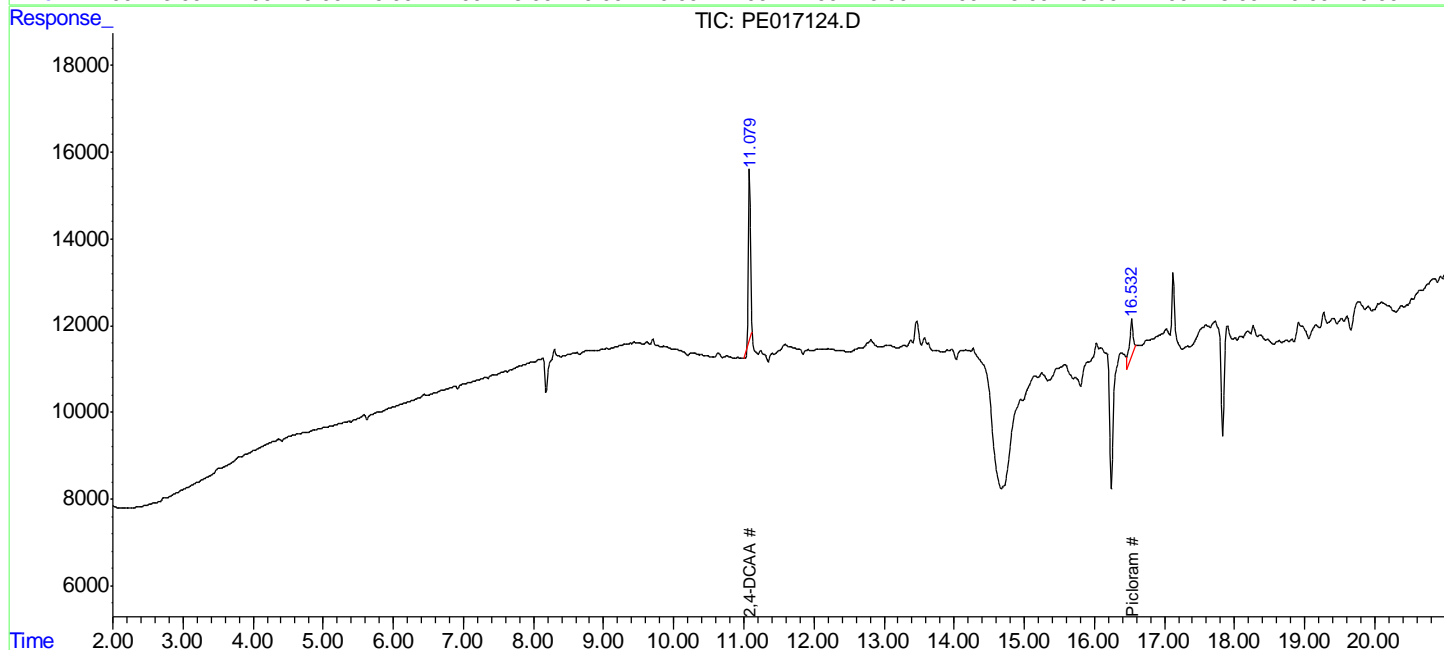
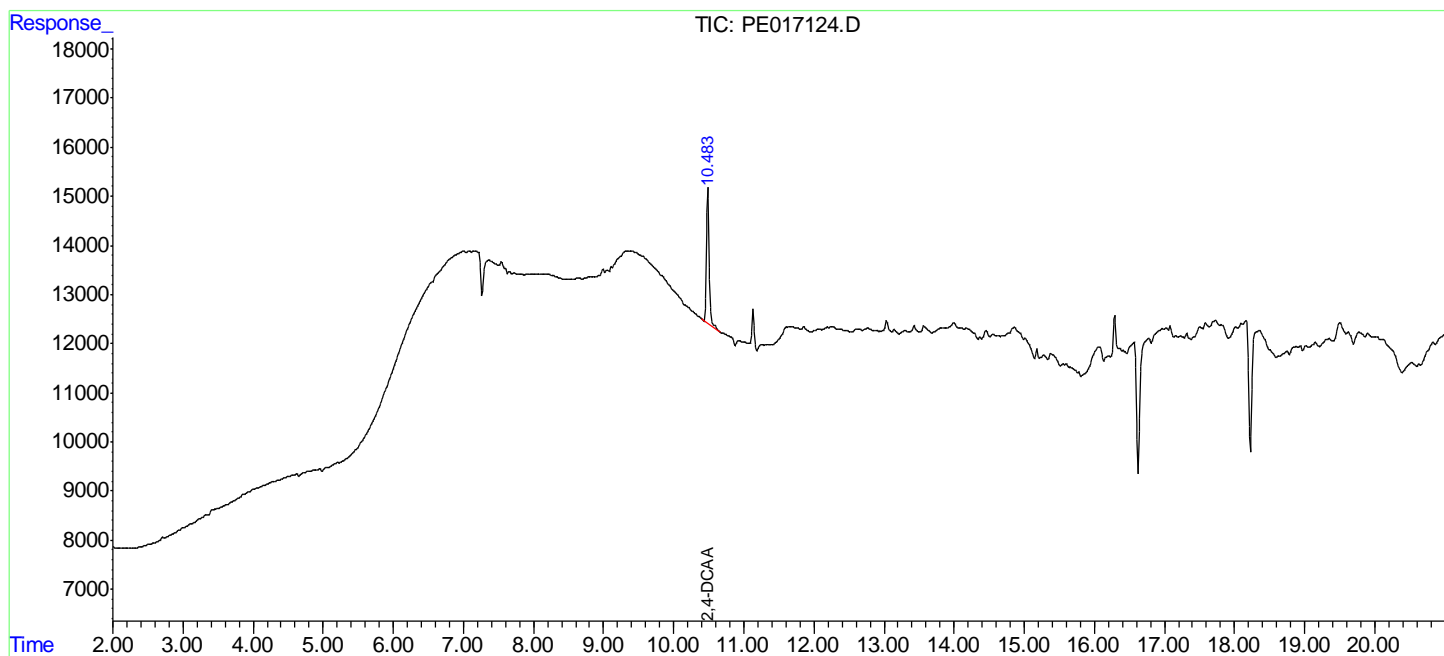
(f)=RT Delta > 1/2 Window (#)=Amounts differ by > 25% (m)=manual int.

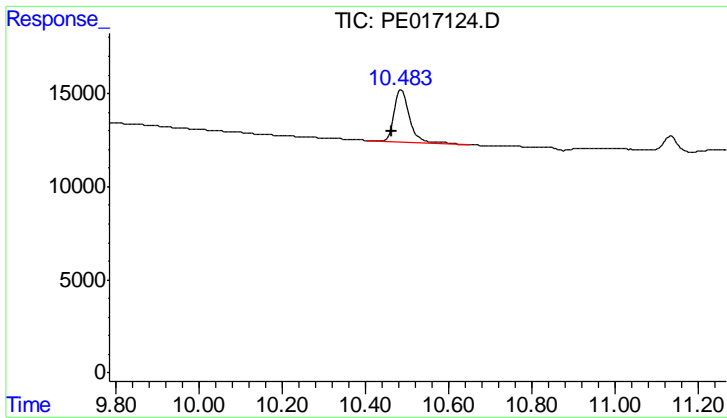
Data Path : P:\HPCHEM1\ECD_E\Data\PE101217\
 Data File : PE017124.D
 Signal(s) : Signal #1: ECD1A.CH Signal #2: ECD2B.CH
 Acq On : 12 Oct 2017 17:22
 Operator : UA/AJ
 Sample : I.BLK
 Misc :
 ALS Vial : 2 Sample Multiplier: 1

Instrument :
 ECD_E
 ClientSampled :
 I.BLK

Integration File signal 1: autoint1.e
 Integration File signal 2: autoint2.e
 Quant Time: Oct 13 05:34:36 2017
 Quant Method : P:\HPCHEM1\ECD_E\Method\PE101217.M
 Quant Title : 8080.M
 QLast Update : Fri Oct 13 05:30:29 2017
 Response via : Initial Calibration
 Integrator: ChemStation

Volume Inj. : 2 µl
 Signal #1 Phase : ZB-35-HT Inferno Signal #2 Phase: ZB-XLB-HT Infernon
 Signal #1 Info : 30M x 0.25mm x0.2 Signal #2 Info : 30M x 0.25mm x 0.25µm

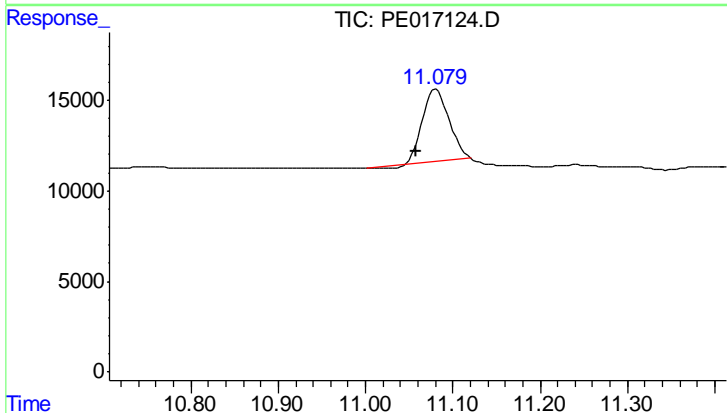




#4 2,4-DCAA

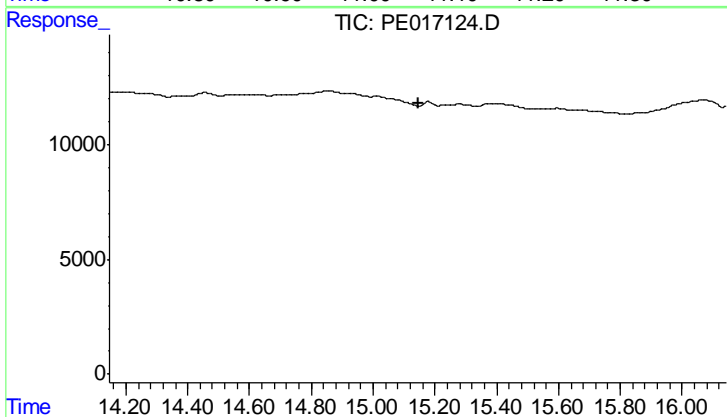
R.T.: 10.486 min
 Delta R.T.: 0.025 min
 Response: 71255
 Conc: 756.55 ng/ml

Instrument :
 ECD_E
 ClientSampleId :
 I.BLK



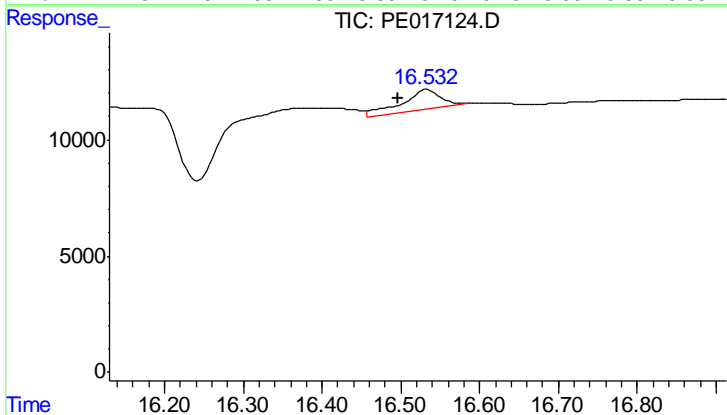
#4 2,4-DCAA

R.T.: 11.081 min
 Delta R.T.: 0.023 min
 Response: 82962
 Conc: 573.70 ng/ml



#15 Picloram

R.T.: 0.000 min
 Exp R.T. : 15.145 min
 Response: 0
 Conc: N.D.



#15 Picloram

R.T.: 16.533 min
 Delta R.T.: 0.037 min
 Response: 30049
 Conc: 26.49 ng/ml