

Data Path : P:\HPCHEM1\ECD\_E\Data\PE101217\  
 Data File : PE017127.D  
 Signal(s) : Signal #1: ECD1A.CH Signal #2: ECD2B.CH  
 Acq On : 12 Oct 2017 21:35  
 Operator : UA/AJ  
 Sample : HSTDICC200  
 Misc :  
 ALS Vial : 3 Sample Multiplier: 1

Instrument :  
 ECD\_E  
 ClientSampleId :  
 HSTDICC200

Integration File signal 1: autoint1.e  
 Integration File signal 2: autoint2.e  
 Quant Time: Oct 13 05:21:27 2017  
 Quant Method : P:\HPCHEM1\ECD\_E\Method\PE101217.M  
 Quant Title : 8080.M  
 QLast Update : Fri Oct 13 05:20:31 2017  
 Response via : Initial Calibration  
 Integrator: ChemStation

Volume Inj. : 2 µl  
 Signal #1 Phase : ZB-35-HT Inferno Signal #2 Phase: ZB-XLB-HT Inferno  
 Signal #1 Info : 30M x 0.25mm x0.2 Signal #2 Info : 30M x 0.25mm x 0.25µm

Compound	RT#1	RT#2	Resp#1	Resp#2	ng/ml	ng/ml
-----						
System Monitoring Compounds						
4) S 2,4-DCAA	10.461	11.058	18865	31329	189.271	210.248
Target Compounds						
1) T Dalapon	3.059	3.252	38067	52980	181.624	199.154
2) T 3,5-DICHL...	9.167	9.413	29954	48329	200.231	202.386
3) T 4-Nitroph...	9.521	0.000	10526	0	166.333	N.D. #
5) T DICAMBA	10.571	11.219	68423	101070	185.906	193.894
8) T DICHLORPROP	11.617	12.178	17668	6822	175.127	38.919 #
9) T 2,4-D	11.974	12.742	21293	42904	169.447	201.579
10) T Pentachlo...	13.009	13.423	254187	443984	183.922	193.729
11) T 2,4,5-TP ...	13.115	13.605	114021	158714	190.434	180.924
12) T 2,4,5-T	13.536	14.243	91813	178576	183.581	186.413
13) T 2,4-DB	14.174	14.828	13494	20672	175.412	182.514
14) T DINOSEB	14.322	14.660	80961	149945	181.715	192.306
15) T Picloram	15.145	16.496	101699	201300	182.225	172.042
16) T DCPA	15.339	15.996	141993	312412	195.321	210.544
-----						

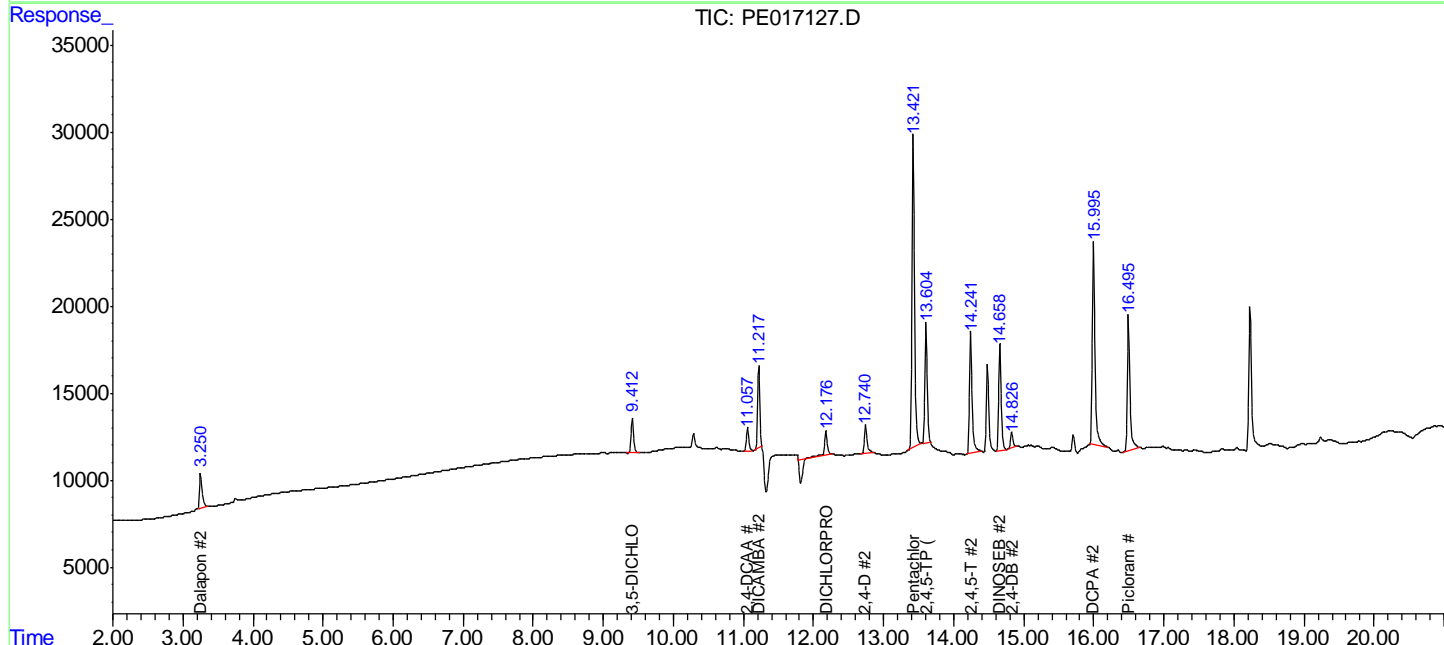
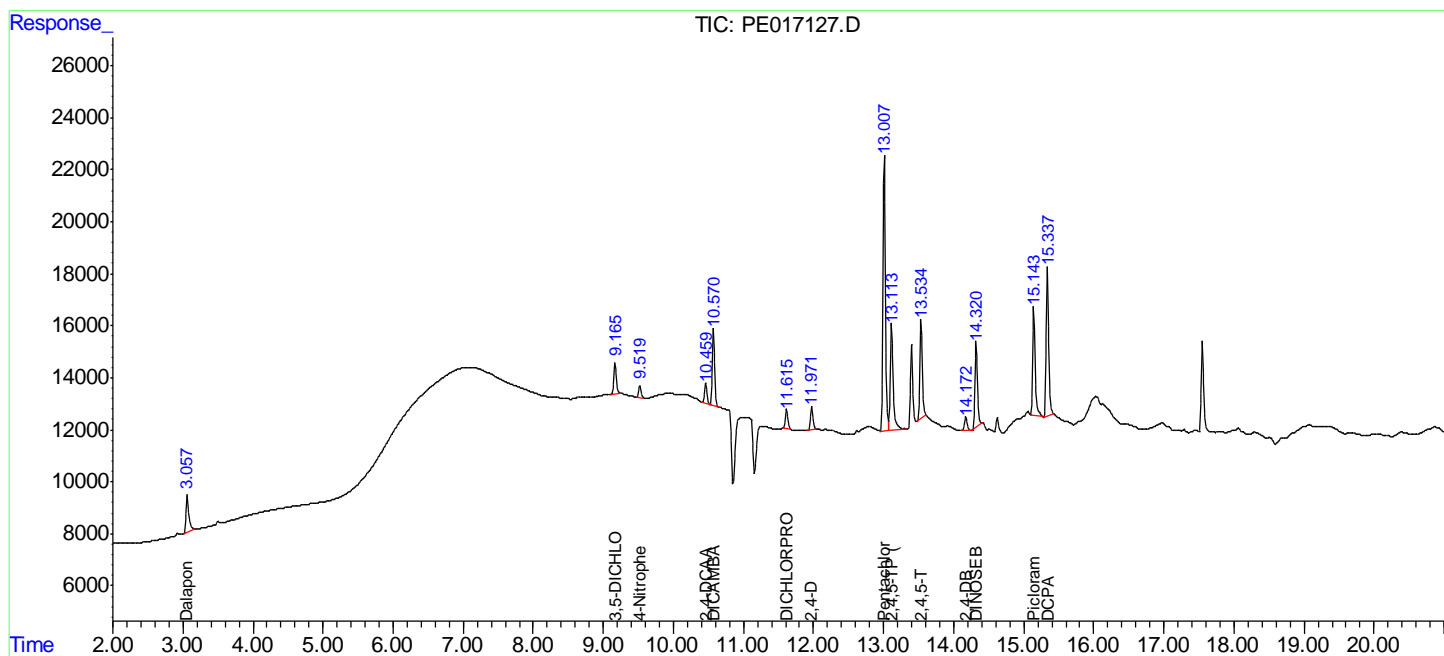
(f)=RT Delta > 1/2 Window (#)=Amounts differ by > 25% (m)=manual int.

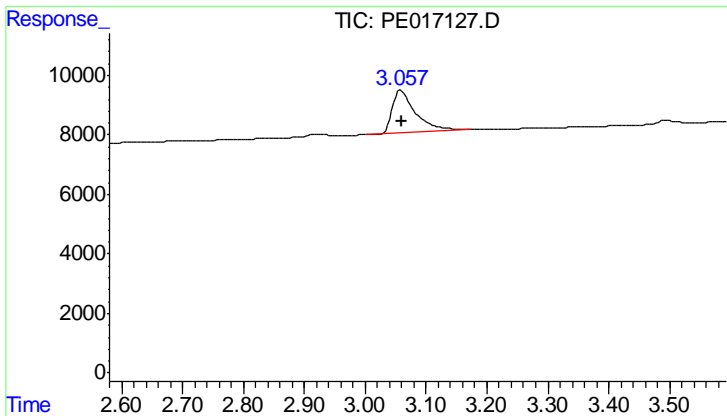
Data Path : P:\HPCHEM1\ECD\_E\Data\PE101217\  
 Data File : PE017127.D  
 Signal(s) : Signal #1: ECD1A.CH Signal #2: ECD2B.CH  
 Acq On : 12 Oct 2017 21:35  
 Operator : UA/AJ  
 Sample : HSTDICC200  
 Misc :  
 ALS Vial : 3 Sample Multiplier: 1

Instrument :  
 ECD\_E  
 ClientSampleId :  
 HSTDICC200

Integration File signal 1: autoint1.e  
 Integration File signal 2: autoint2.e  
 Quant Time: Oct 13 05:21:27 2017  
 Quant Method : P:\HPCHEM1\ECD\_E\Method\PE101217.M  
 Quant Title : 8080.M  
 QLast Update : Fri Oct 13 05:20:31 2017  
 Response via : Initial Calibration  
 Integrator: ChemStation

Volume Inj. : 2 µl  
 Signal #1 Phase : ZB-35-HT Inferno Signal #2 Phase: ZB-XLB-HT Inferno  
 Signal #1 Info : 30M x 0.25mm x0.2 Signal #2 Info : 30M x 0.25mm x 0.25µm

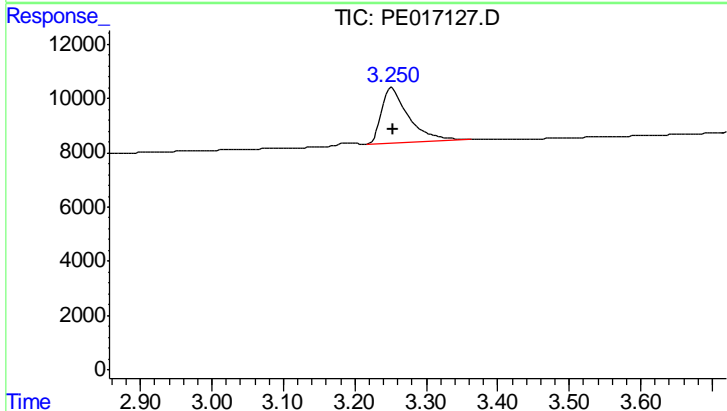




#1 Dalapon

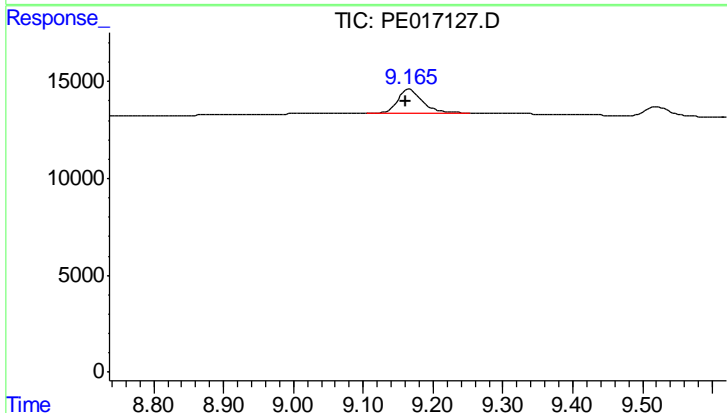
R.T.: 3.059 min  
 Delta R.T.: -0.001 min  
 Response: 38067  
 Conc: 181.62 ng/ml

Instrument :  
 ECD\_E  
 ClientSampleId :  
 HSTDICC200



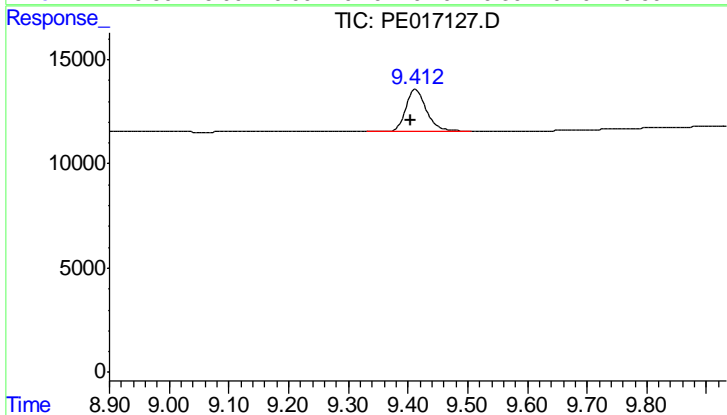
#1 Dalapon

R.T.: 3.252 min  
 Delta R.T.: -0.002 min  
 Response: 52980  
 Conc: 199.15 ng/ml



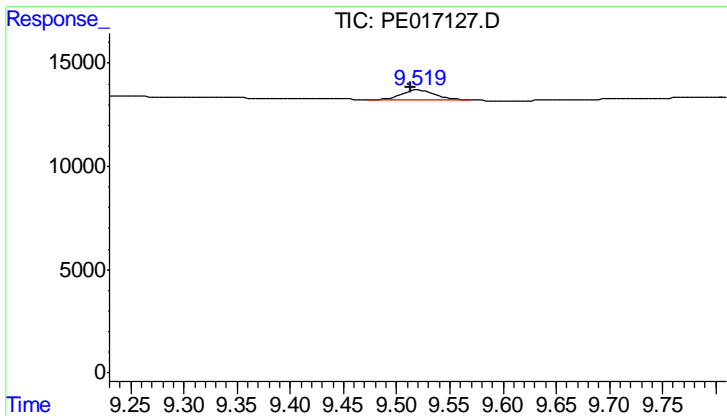
#2 3,5-DICHLOROBENZOIC ACID

R.T.: 9.167 min  
 Delta R.T.: 0.006 min  
 Response: 29954  
 Conc: 200.23 ng/ml



#2 3,5-DICHLOROBENZOIC ACID

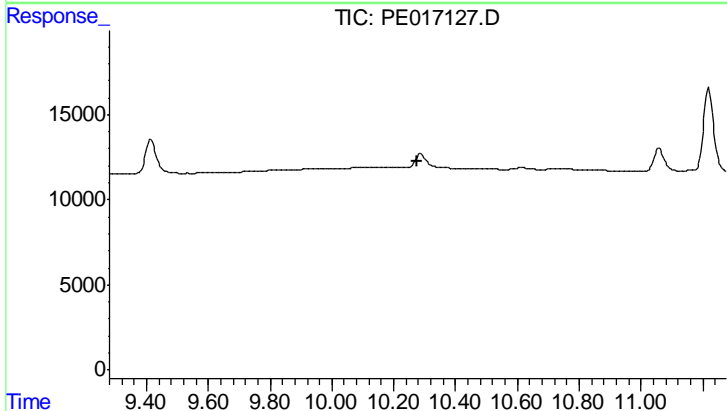
R.T.: 9.413 min  
 Delta R.T.: 0.008 min  
 Response: 48329  
 Conc: 202.39 ng/ml



#3 4-Nitrophenol

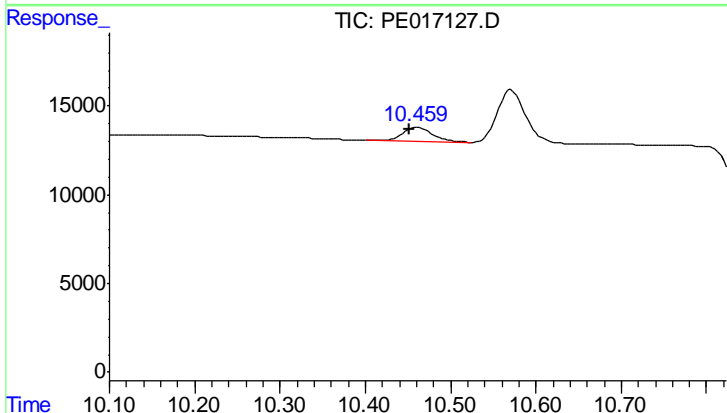
R.T.: 9.521 min  
 Delta R.T.: 0.007 min  
 Response: 10526  
 Conc: 166.33 ng/ml

Instrument :  
 ECD\_E  
 ClientSampleId :  
 HSTDICC200



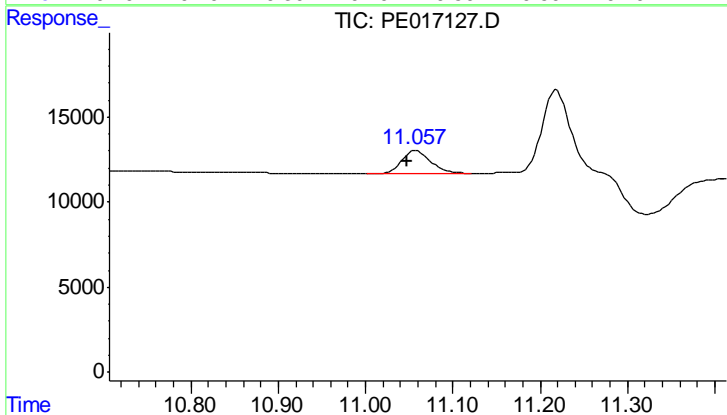
#3 4-Nitrophenol

R.T.: 0.000 min  
 Exp R.T.: 10.277 min  
 Response: 0  
 Conc: N.D.



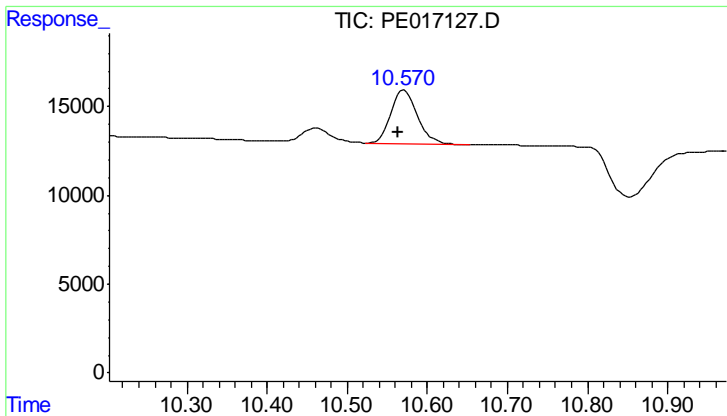
#4 2,4-DCAA

R.T.: 10.461 min  
 Delta R.T.: 0.009 min  
 Response: 18865  
 Conc: 189.27 ng/ml



#4 2,4-DCAA

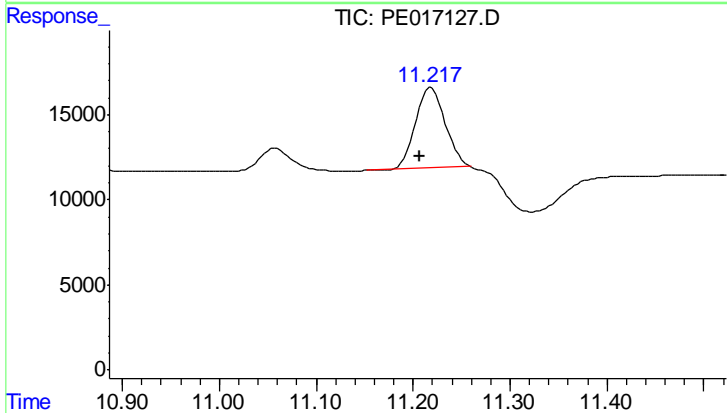
R.T.: 11.058 min  
 Delta R.T.: 0.011 min  
 Response: 31329  
 Conc: 210.25 ng/ml



#5 DICAMBA

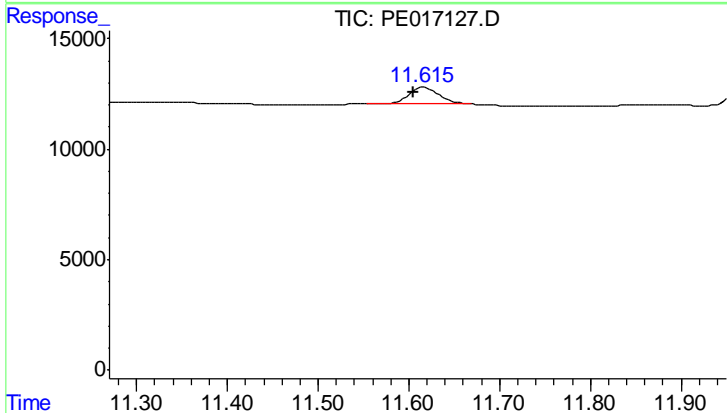
R.T.: 10.571 min  
 Delta R.T.: 0.008 min  
 Response: 68423  
 Conc: 185.91 ng/ml

Instrument :  
 ECD\_E  
 ClientSampleId :  
 HSTDICC200



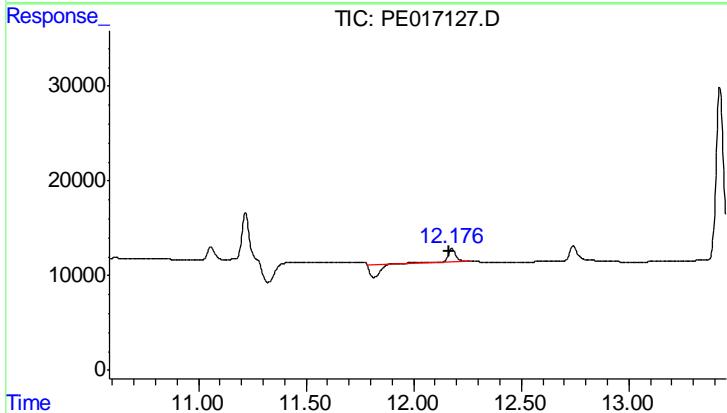
#5 DICAMBA

R.T.: 11.219 min  
 Delta R.T.: 0.012 min  
 Response: 101070  
 Conc: 193.89 ng/ml



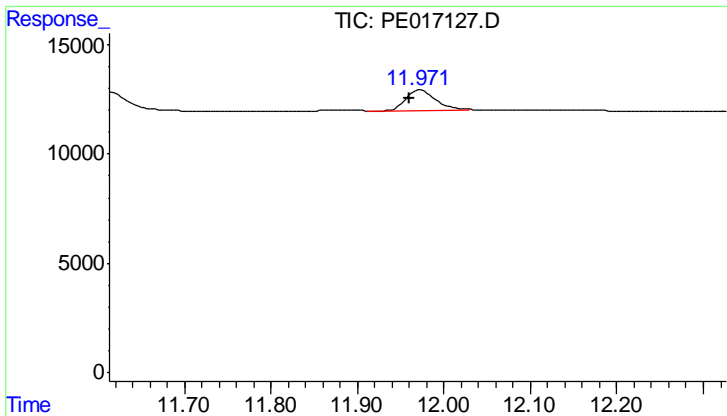
#8 DICHLORPROP

R.T.: 11.617 min  
 Delta R.T.: 0.012 min  
 Response: 17668  
 Conc: 175.13 ng/ml



#8 DICHLORPROP

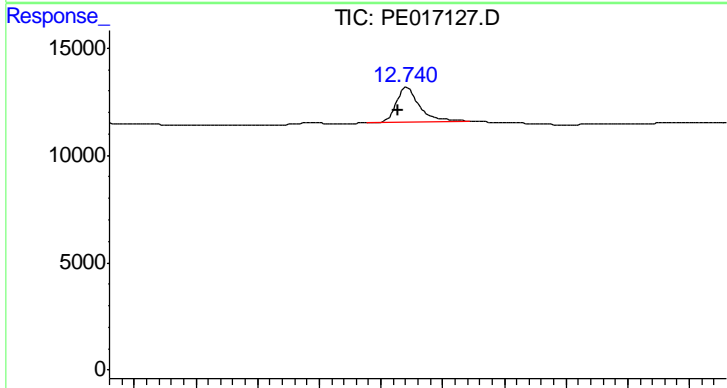
R.T.: 12.178 min  
 Delta R.T.: 0.013 min  
 Response: 6822  
 Conc: 38.92 ng/ml



#9 2,4-D

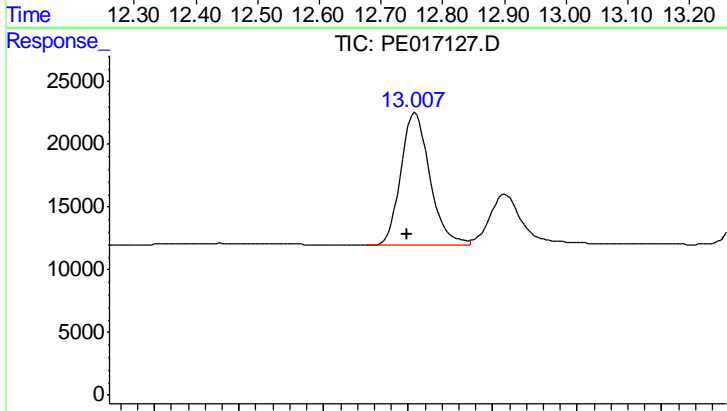
R.T.: 11.974 min  
 Delta R.T.: 0.013 min  
 Response: 21293  
 Conc: 169.45 ng/ml

Instrument :  
 ECD\_E  
 ClientSampleId :  
 HSTDICC200



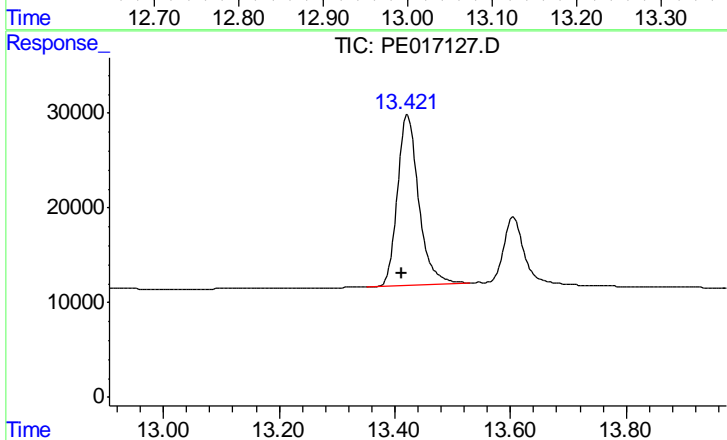
#9 2,4-D

R.T.: 12.742 min  
 Delta R.T.: 0.013 min  
 Response: 42904  
 Conc: 201.58 ng/ml



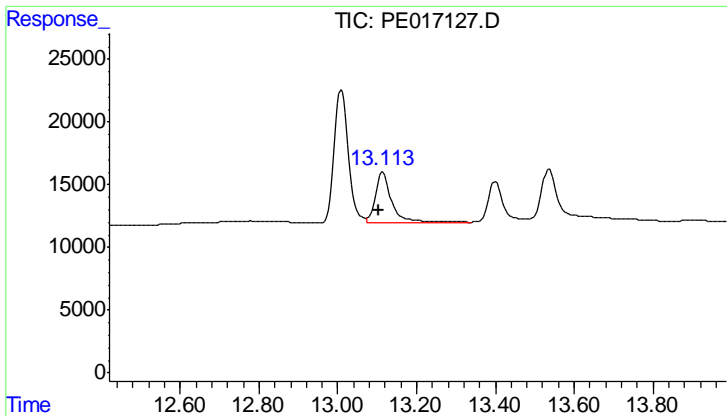
#10 Pentachlorophenol

R.T.: 13.009 min  
 Delta R.T.: 0.011 min  
 Response: 254187  
 Conc: 183.92 ng/ml



#10 Pentachlorophenol

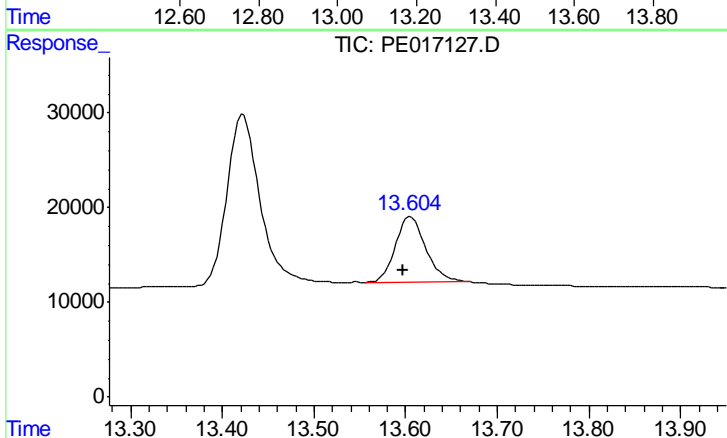
R.T.: 13.423 min  
 Delta R.T.: 0.010 min  
 Response: 443984  
 Conc: 193.73 ng/ml



#11 2,4,5-TP (SILVEX)

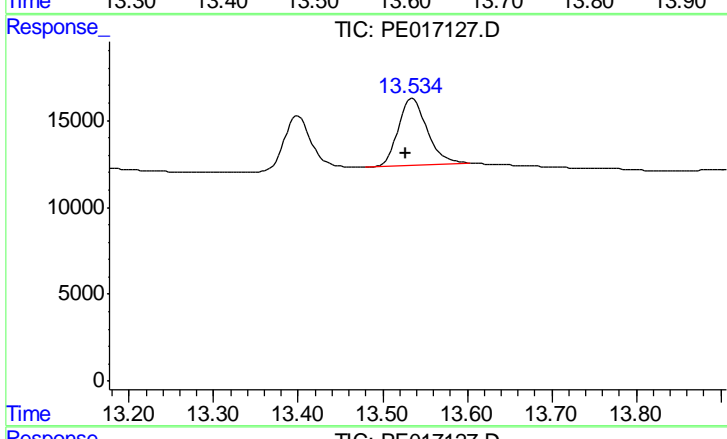
R.T.: 13.115 min  
 Delta R.T.: 0.009 min  
 Response: 114021  
 Conc: 190.43 ng/ml

Instrument :  
 ECD\_E  
 ClientSampleId :  
 HSTDICC200



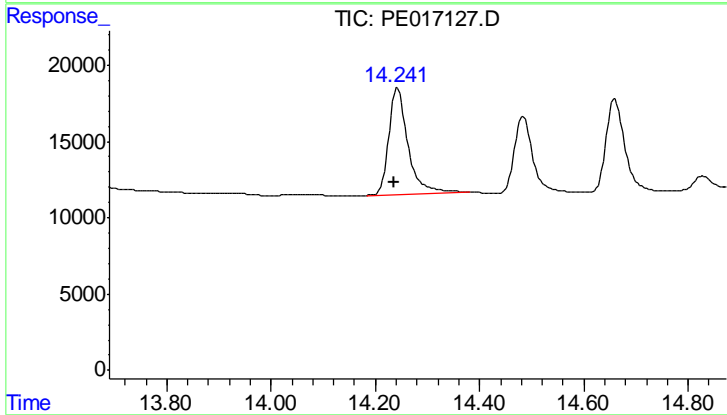
#11 2,4,5-TP (SILVEX)

R.T.: 13.605 min  
 Delta R.T.: 0.008 min  
 Response: 158714  
 Conc: 180.92 ng/ml



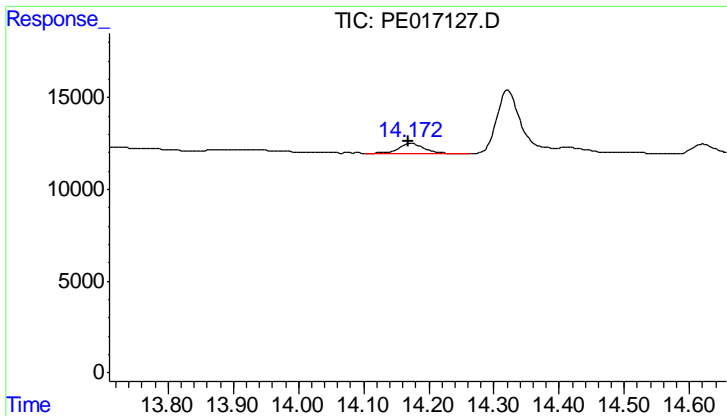
#12 2,4,5-T

R.T.: 13.536 min  
 Delta R.T.: 0.009 min  
 Response: 91813  
 Conc: 183.58 ng/ml



#12 2,4,5-T

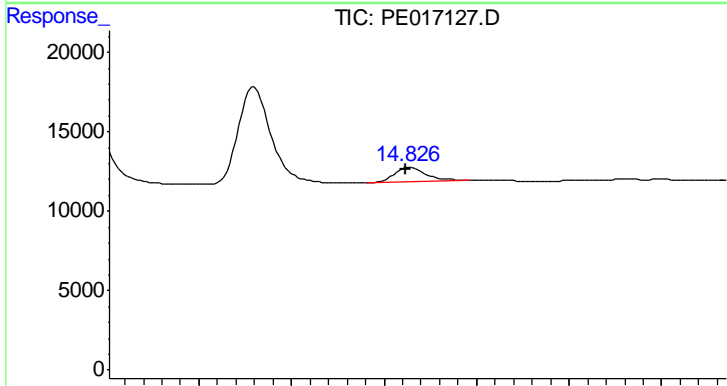
R.T.: 14.243 min  
 Delta R.T.: 0.006 min  
 Response: 178576  
 Conc: 186.41 ng/ml



#13 2,4-DB

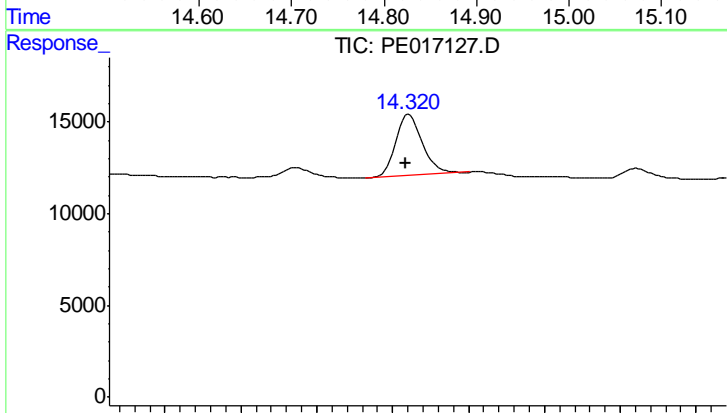
R.T.: 14.174 min  
 Delta R.T.: 0.005 min  
 Response: 13494  
 Conc: 175.41 ng/ml

Instrument :  
 ECD\_E  
 ClientSampleId :  
 HSTDICC200



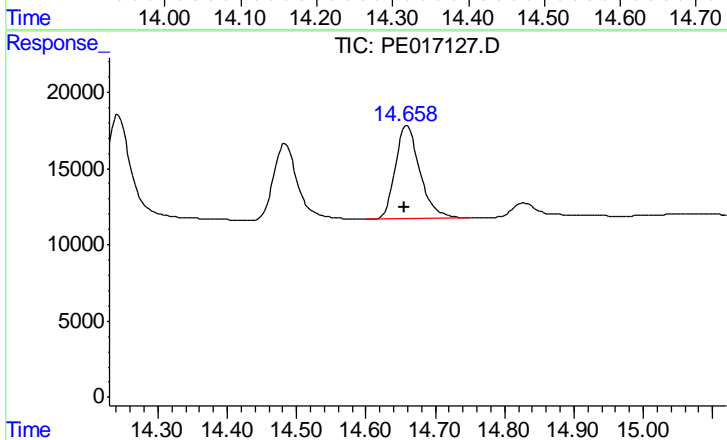
#13 2,4-DB

R.T.: 14.828 min  
 Delta R.T.: 0.004 min  
 Response: 20672  
 Conc: 182.51 ng/ml



#14 DINOSEB

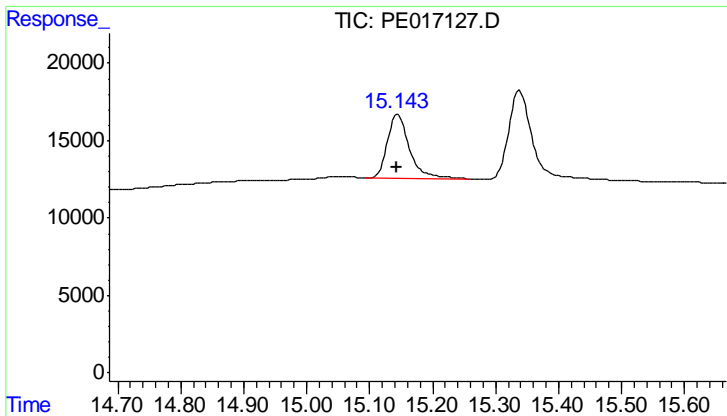
R.T.: 14.322 min  
 Delta R.T.: 0.004 min  
 Response: 80961  
 Conc: 181.71 ng/ml



#14 DINOSEB

R.T.: 14.660 min  
 Delta R.T.: 0.004 min  
 Response: 149945  
 Conc: 192.31 ng/ml

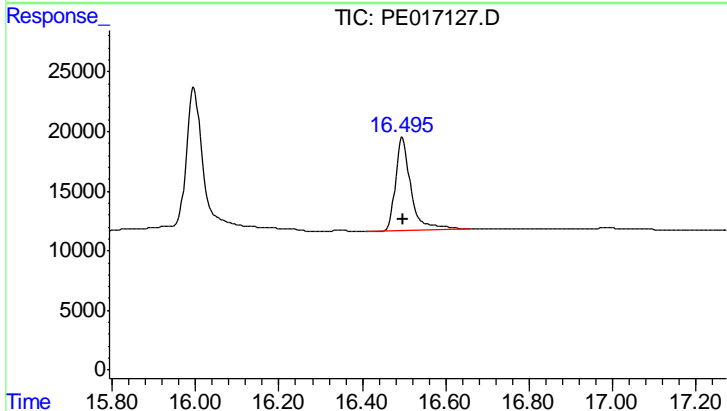




#15 Picloram

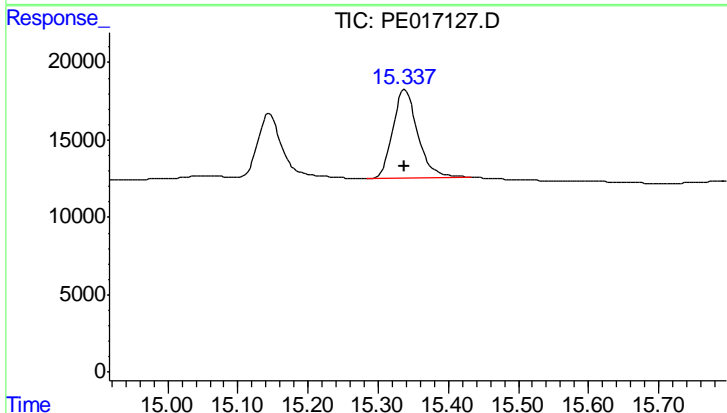
R.T.: 15.145 min  
 Delta R.T.: 0.002 min  
 Response: 101699  
 Conc: 182.22 ng/ml

Instrument :  
 ECD\_E  
 ClientSampleId :  
 HSTDICC200



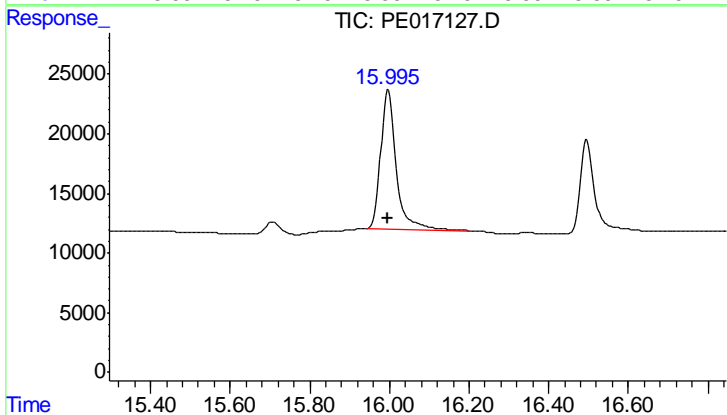
#15 Picloram

R.T.: 16.496 min  
 Delta R.T.: -0.003 min  
 Response: 201300  
 Conc: 172.04 ng/ml



#16 DCPA

R.T.: 15.339 min  
 Delta R.T.: 0.001 min  
 Response: 141993  
 Conc: 195.32 ng/ml



#16 DCPA

R.T.: 15.996 min  
 Delta R.T.: 0.000 min  
 Response: 312412  
 Conc: 210.54 ng/ml