

Data Path : P:\HPCHEM1\ECD_E\Data\PE101217\
 Data File : PE017132.D
 Signal(s) : Signal #1: ECD1A.CH Signal #2: ECD2B.CH
 Acq On : 13 Oct 2017 00:00
 Operator : UA/AJ
 Sample : HSTDICV750
 Misc :
 ALS Vial : 8 Sample Multiplier: 1

Instrument :
 ECD_E
 ClientSampleId :
 ICVPE101217

Integration File signal 1: autoint1.e
 Integration File signal 2: autoint2.e
 Quant Time: Oct 13 07:30:34 2017
 Quant Method : P:\HPCHEM1\ECD_E\Method\PE101217.M
 Quant Title : 8080.M
 QLast Update : Fri Oct 13 07:26:24 2017
 Response via : Initial Calibration
 Integrator: ChemStation

Volume Inj. : 2 µl
 Signal #1 Phase : ZB-35-HT Inferno Signal #2 Phase: ZB-XLB-HT Infernon
 Signal #1 Info : 30M x 0.25mm x0.2 Signal #2 Info : 30M x 0.25mm x 0.25µm

Compound	RT#1	RT#2	Resp#1	Resp#2	ng/ml	ng/ml

System Monitoring Compounds						
4) S 2,4-DCAA	10.449	11.044	74773	112281	793.892	776.450
Target Compounds						
1) T Dalapon	3.057	3.251	143197	180659	709.253	687.542
2) T 3,5-DICHL...	9.156	9.401	106896	170246	724.073	727.111
3) T 4-Nitroph...	9.510	10.273	43449	74329	722.602	713.124
5) T DICAMBA	10.559	11.204	258838	374356	736.281	735.547
8) T DICHLORPROP	11.603	12.163	71980	124208	760.832	746.482
9) T 2,4-D	11.959	12.729	89659	150437	757.693	749.058
10) T Pentachlo...	12.998	13.412	1004614	1655004	754.588	753.615
11) T 2,4,5-TP ...	13.106	13.597	430871	631533	746.604	767.906
12) T 2,4,5-T	13.528	14.237	361300	691051	765.466	760.799
13) T 2,4-DB	14.170	14.824	51497	78293	704.566	740.493
14) T DINOSEB	14.319	14.656	323531	554633	769.663	752.708
15) T Picloram	15.143	16.498	400825	826520	752.467	728.644
16) T DCPA	15.337	15.996	531117	1102811	761.894	763.601

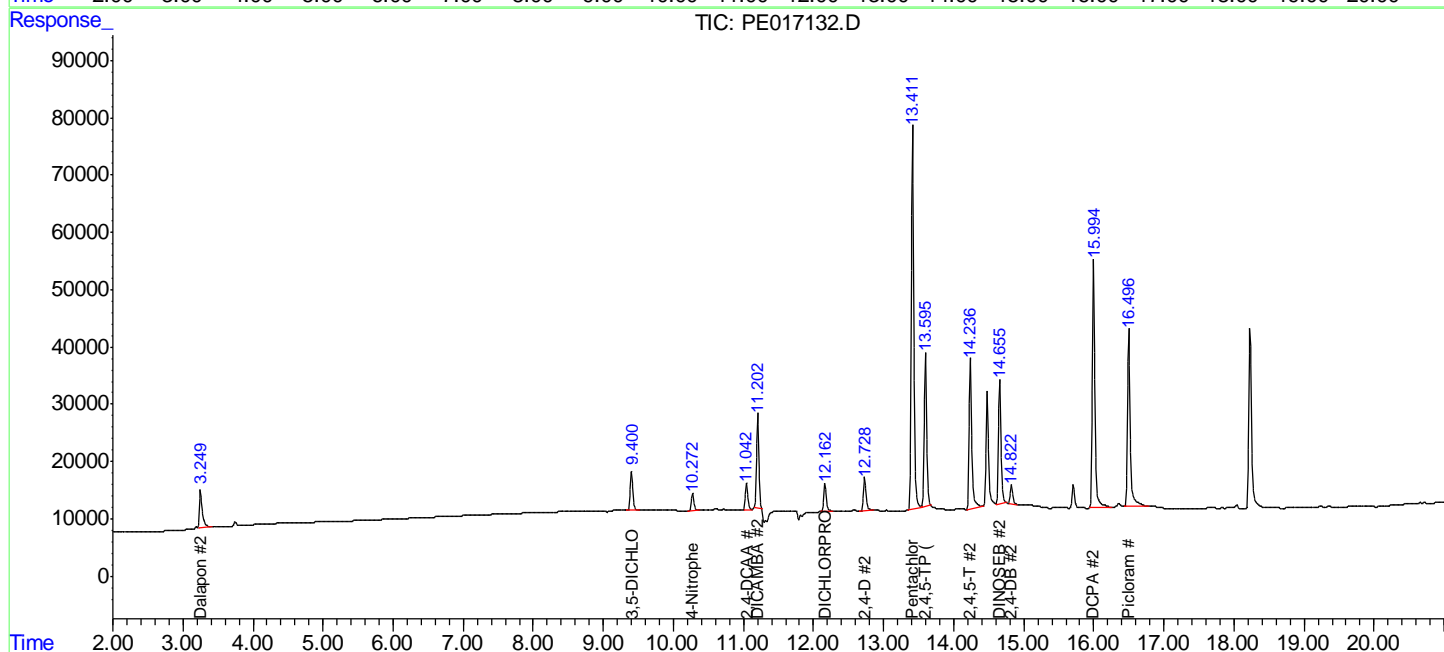
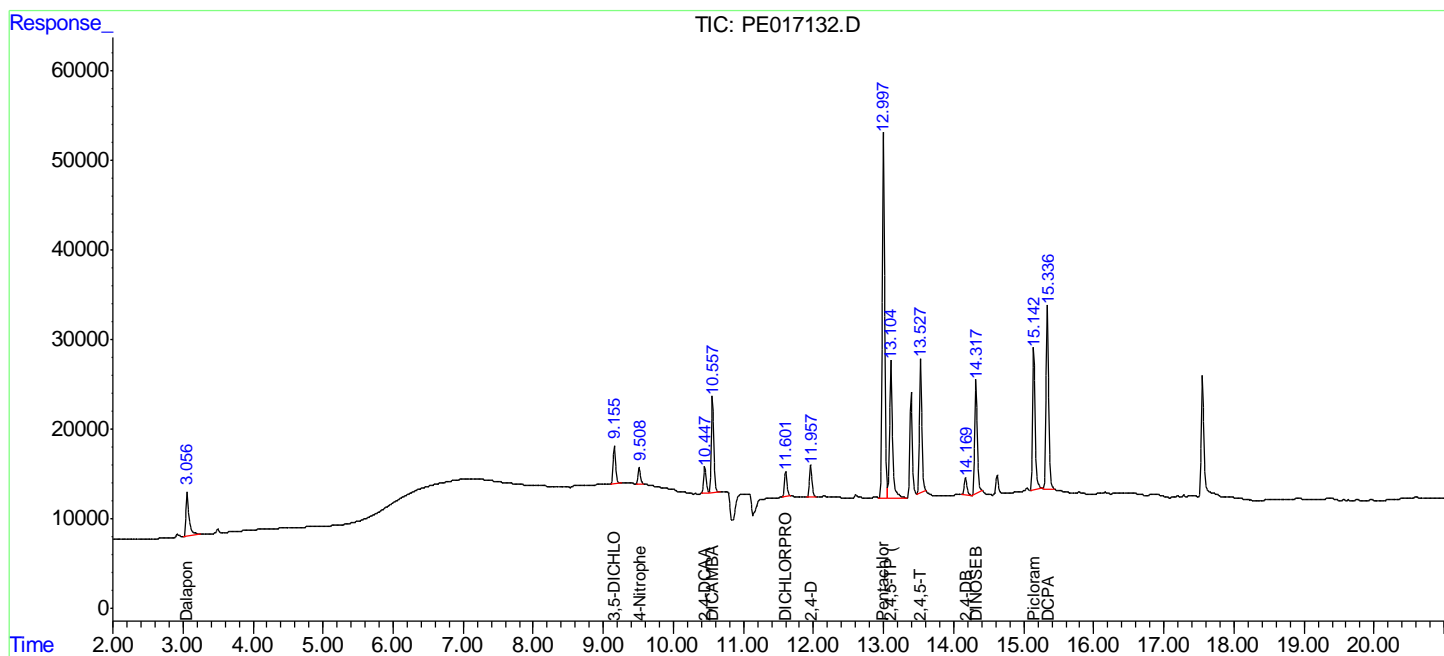
(f)=RT Delta > 1/2 Window (#)=Amounts differ by > 25% (m)=manual int.

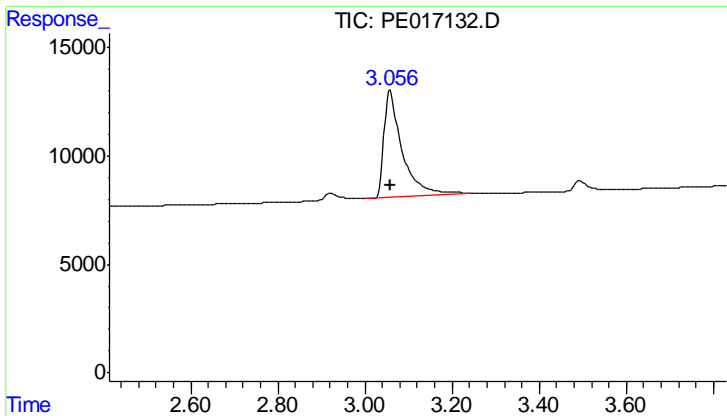
Data Path : P:\HPCHEM1\ECD_E\Data\PE101217\
 Data File : PE017132.D
 Signal(s) : Signal #1: ECD1A.CH Signal #2: ECD2B.CH
 Acq On : 13 Oct 2017 00:00
 Operator : UA/AJ
 Sample : HSTDICV750
 Misc :
 ALS Vial : 8 Sample Multiplier: 1

Instrument :
 ECD_E
 ClientSampleId :
 ICVPE101217

Integration File signal 1: autoint1.e
 Integration File signal 2: autoint2.e
 Quant Time: Oct 13 07:30:34 2017
 Quant Method : P:\HPCHEM1\ECD_E\Method\PE101217.M
 Quant Title : 8080.M
 QLast Update : Fri Oct 13 07:26:24 2017
 Response via : Initial Calibration
 Integrator: ChemStation

Volume Inj. : 2 µl
 Signal #1 Phase : ZB-35-HT Inferno Signal #2 Phase: ZB-XLB-HT Inferno
 Signal #1 Info : 30M x 0.25mm x0.2 Signal #2 Info : 30M x 0.25mm x 0.25µm

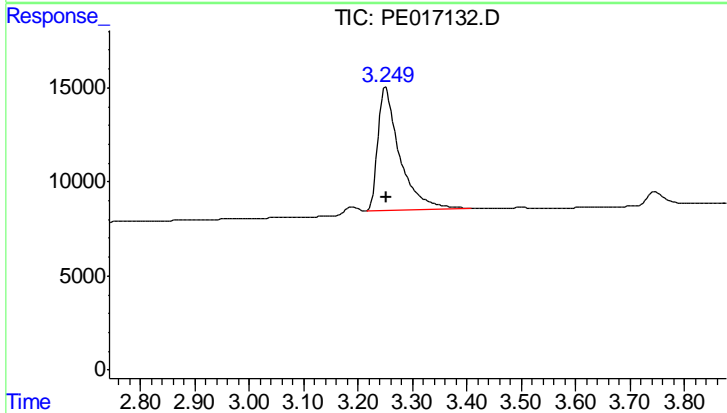




#1 Dalapon

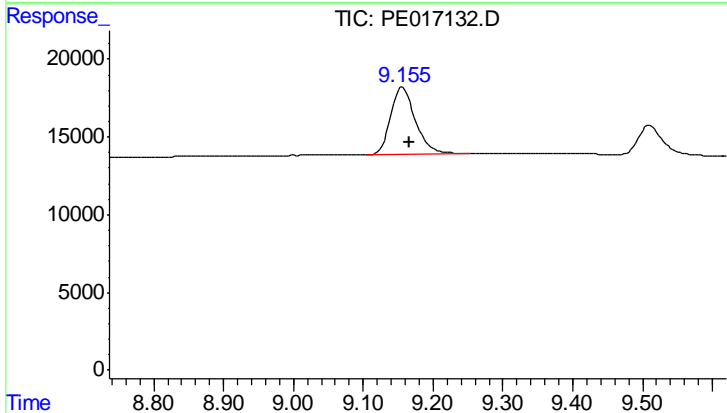
R.T.: 3.057 min
 Delta R.T.: -0.001 min
 Response: 143197
 Conc: 709.25 ng/ml

Instrument :
 ECD_E
 ClientSampleId :
 ICVPE101217



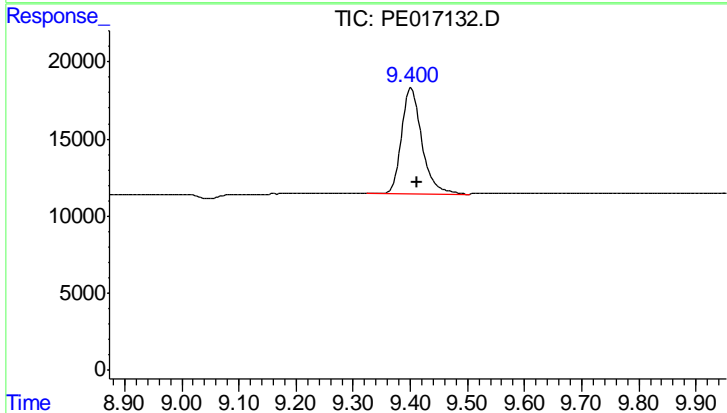
#1 Dalapon

R.T.: 3.251 min
 Delta R.T.: -0.001 min
 Response: 180659
 Conc: 687.54 ng/ml



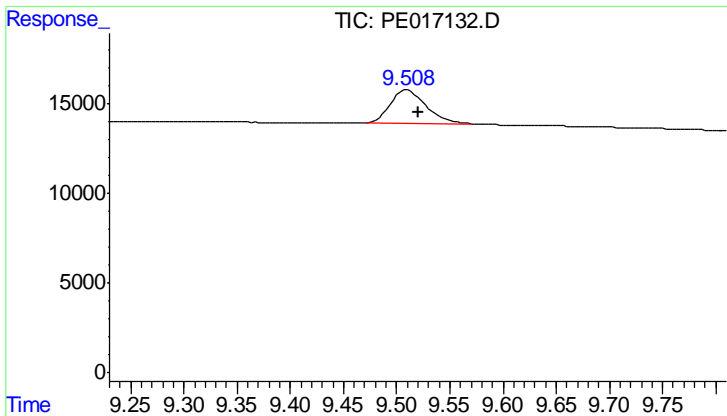
#2 3,5-DICHLOROBENZOIC ACID

R.T.: 9.156 min
 Delta R.T.: -0.010 min
 Response: 106896
 Conc: 724.07 ng/ml



#2 3,5-DICHLOROBENZOIC ACID

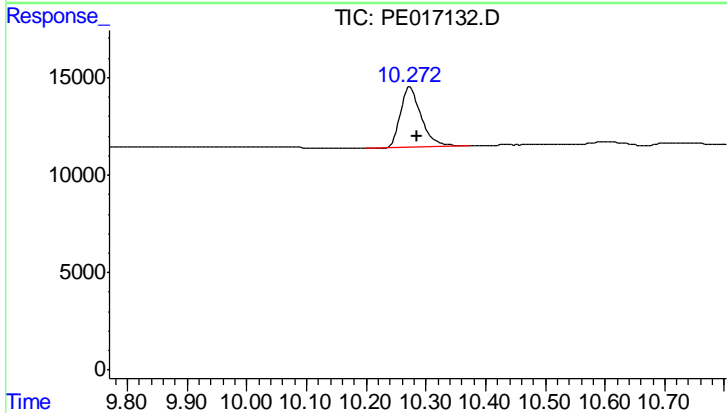
R.T.: 9.401 min
 Delta R.T.: -0.012 min
 Response: 170246
 Conc: 727.11 ng/ml



#3 4-Nitrophenol

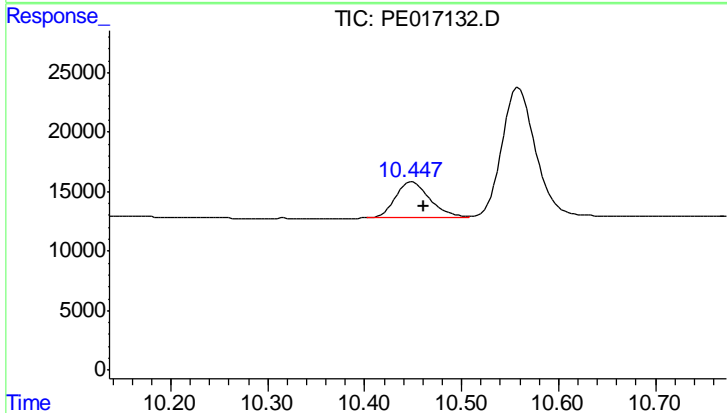
R.T.: 9.510 min
 Delta R.T.: -0.010 min
 Response: 43449
 Conc: 722.60 ng/ml

Instrument :
 ECD_E
 ClientSampleId :
 ICVPE101217



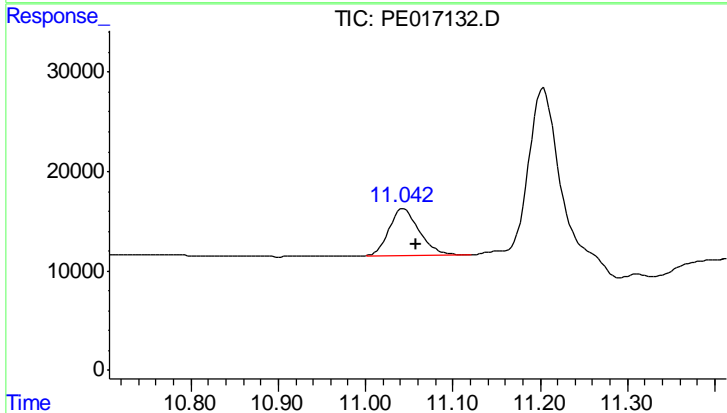
#3 4-Nitrophenol

R.T.: 10.273 min
 Delta R.T.: -0.012 min
 Response: 74329
 Conc: 713.12 ng/ml



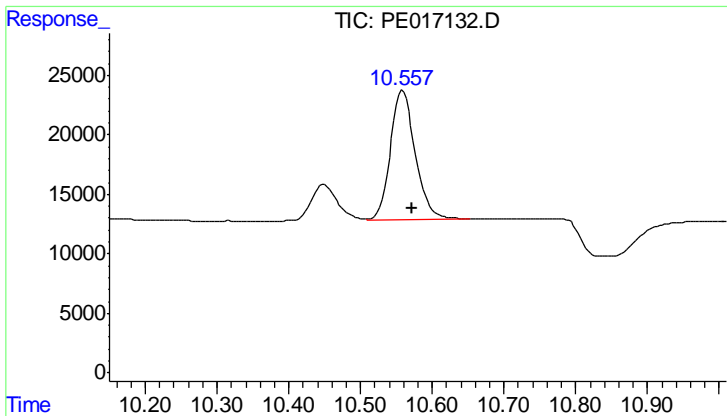
#4 2,4-DCAA

R.T.: 10.449 min
 Delta R.T.: -0.012 min
 Response: 74773
 Conc: 793.89 ng/ml



#4 2,4-DCAA

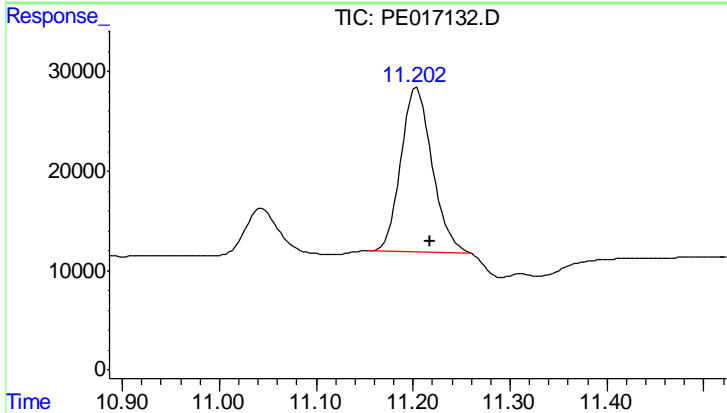
R.T.: 11.044 min
 Delta R.T.: -0.014 min
 Response: 112281
 Conc: 776.45 ng/ml



#5 DICAMBA

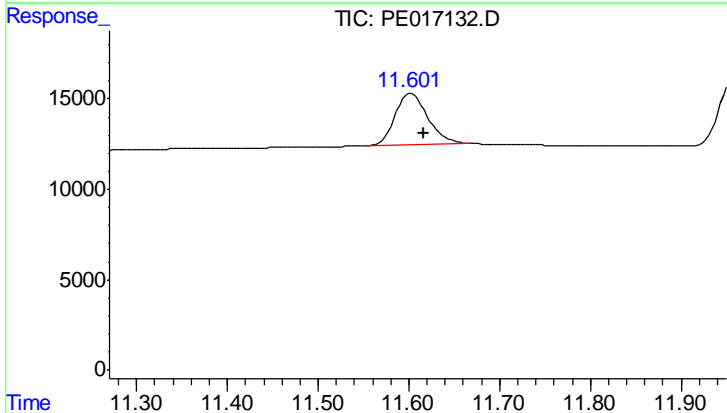
R.T.: 10.559 min
 Delta R.T.: -0.012 min
 Response: 258838
 Conc: 736.28 ng/ml

Instrument :
 ECD_E
 ClientSampleId :
 ICVPE101217



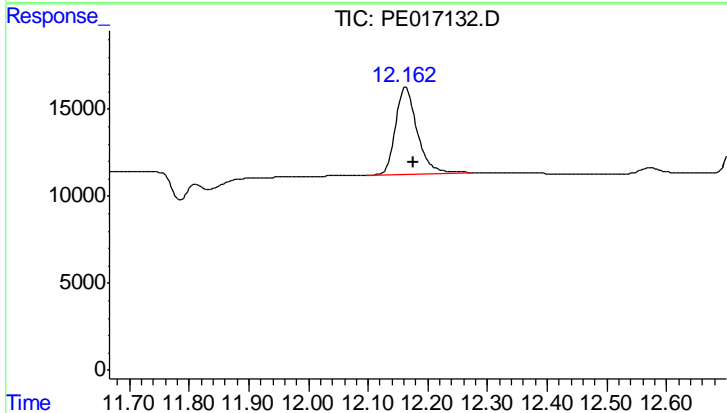
#5 DICAMBA

R.T.: 11.204 min
 Delta R.T.: -0.013 min
 Response: 374356
 Conc: 735.55 ng/ml



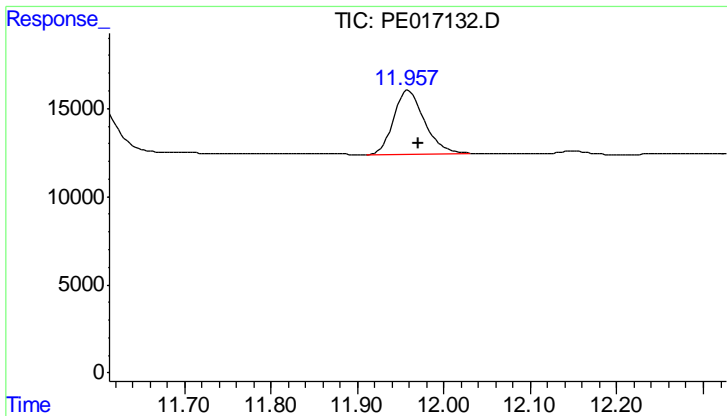
#8 DICHLORPROP

R.T.: 11.603 min
 Delta R.T.: -0.014 min
 Response: 71980
 Conc: 760.83 ng/ml



#8 DICHLORPROP

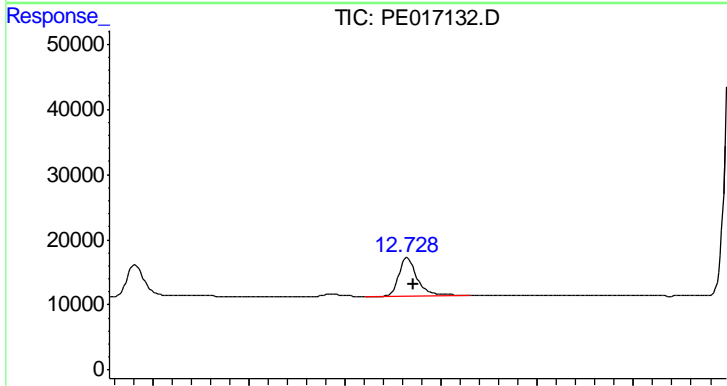
R.T.: 12.163 min
 Delta R.T.: -0.013 min
 Response: 124208
 Conc: 746.48 ng/ml



#9 2,4-D

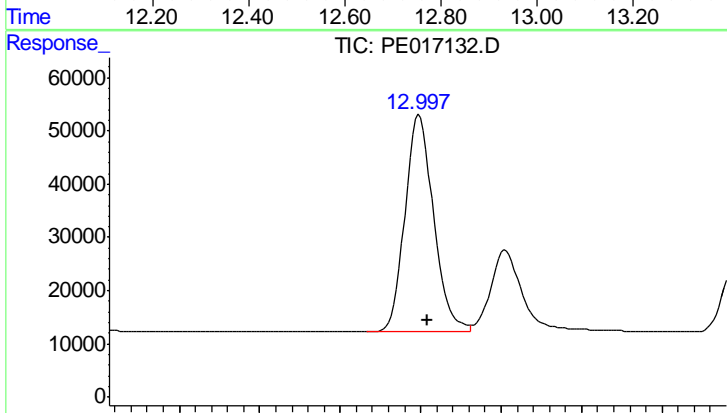
R.T.: 11.959 min
 Delta R.T.: -0.012 min
 Response: 89659
 Conc: 757.69 ng/ml

Instrument :
 ECD_E
 ClientSampleId :
 ICVPE101217



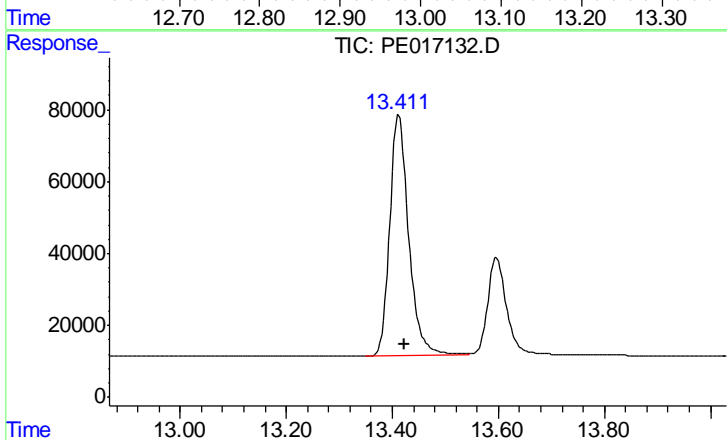
#9 2,4-D

R.T.: 12.729 min
 Delta R.T.: -0.013 min
 Response: 150437
 Conc: 749.06 ng/ml



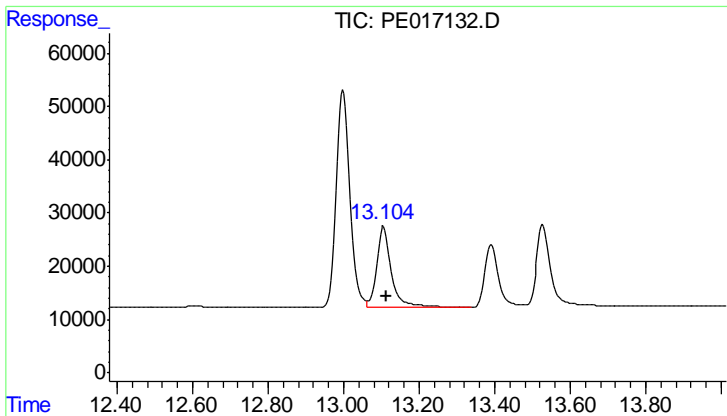
#10 Pentachlorophenol

R.T.: 12.998 min
 Delta R.T.: -0.011 min
 Response: 1004614
 Conc: 754.59 ng/ml



#10 Pentachlorophenol

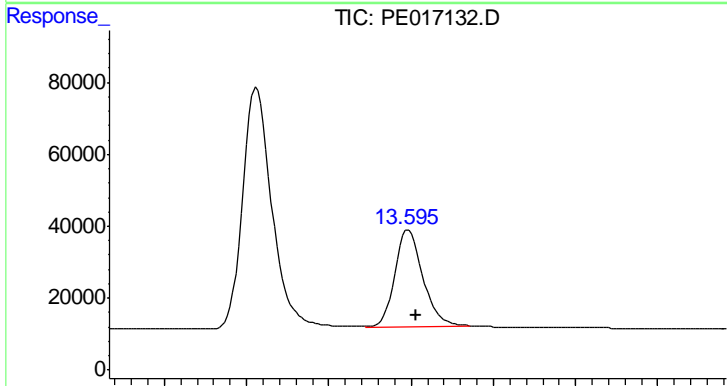
R.T.: 13.412 min
 Delta R.T.: -0.010 min
 Response: 1655004
 Conc: 753.62 ng/ml



#11 2,4,5-TP (SILVEX)

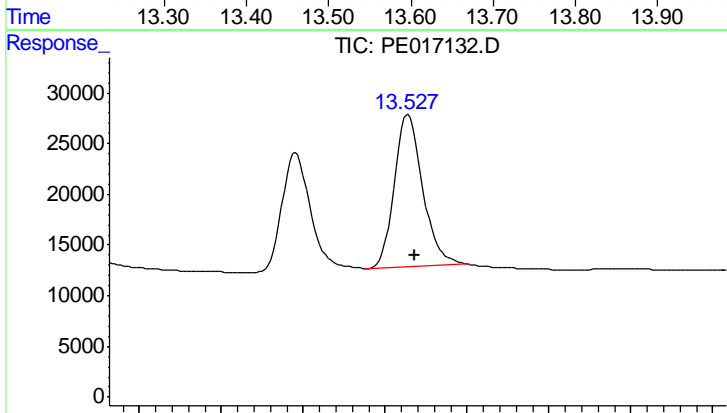
R.T.: 13.106 min
 Delta R.T.: -0.009 min
 Response: 430871
 Conc: 746.60 ng/ml

Instrument :
 ECD_E
 ClientSampleId :
 ICVPE101217



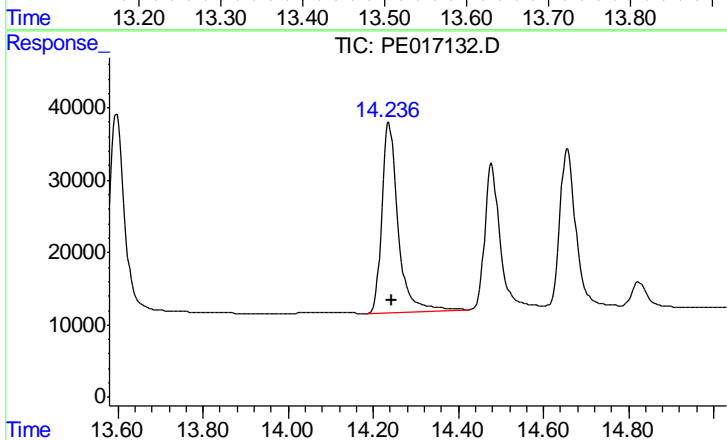
#11 2,4,5-TP (SILVEX)

R.T.: 13.597 min
 Delta R.T.: -0.008 min
 Response: 631533
 Conc: 767.91 ng/ml



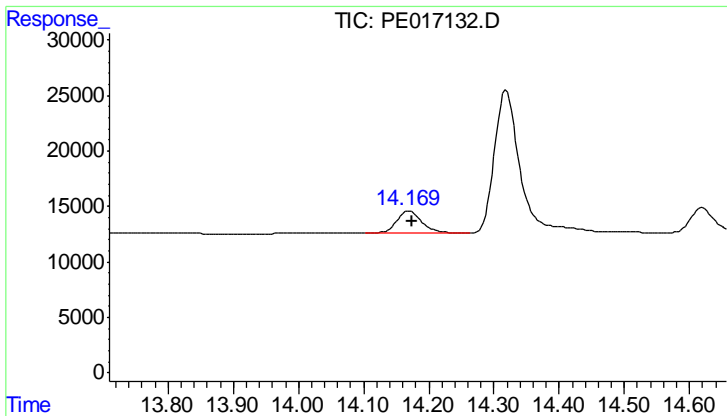
#12 2,4,5-T

R.T.: 13.528 min
 Delta R.T.: -0.008 min
 Response: 361300
 Conc: 765.47 ng/ml



#12 2,4,5-T

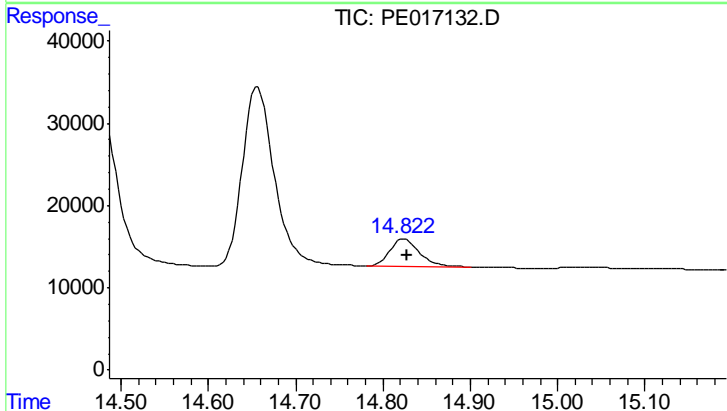
R.T.: 14.237 min
 Delta R.T.: -0.006 min
 Response: 691051
 Conc: 760.80 ng/ml



#13 2,4-DB

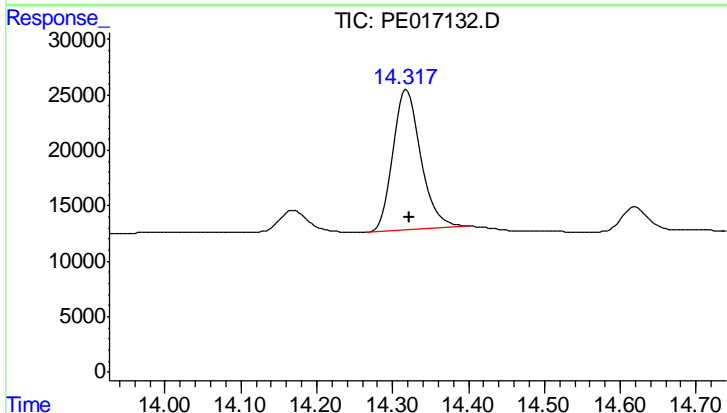
R.T.: 14.170 min
 Delta R.T.: -0.004 min
 Response: 51497
 Conc: 704.57 ng/ml

Instrument :
 ECD_E
 ClientSampleId :
 ICVPE101217



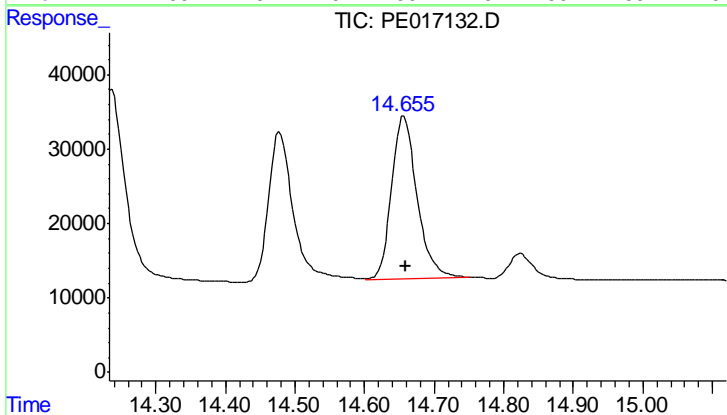
#13 2,4-DB

R.T.: 14.824 min
 Delta R.T.: -0.004 min
 Response: 78293
 Conc: 740.49 ng/ml



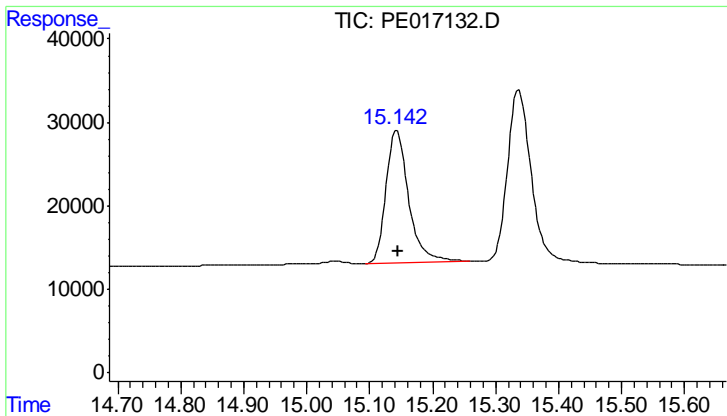
#14 DINOSEB

R.T.: 14.319 min
 Delta R.T.: -0.003 min
 Response: 323531
 Conc: 769.66 ng/ml



#14 DINOSEB

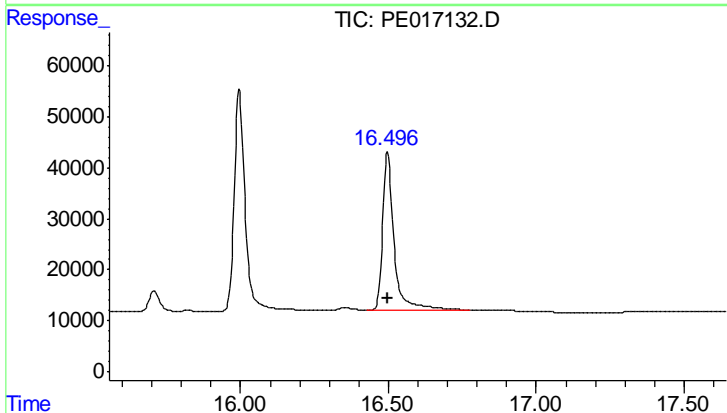
R.T.: 14.656 min
 Delta R.T.: -0.003 min
 Response: 554633
 Conc: 752.71 ng/ml



#15 Picloram

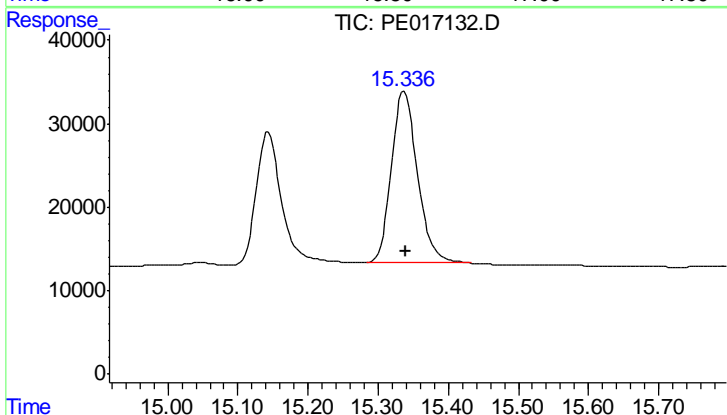
R.T.: 15.143 min
 Delta R.T.: -0.002 min
 Response: 400825
 Conc: 752.47 ng/ml

Instrument :
 ECD_E
 ClientSampleId :
 ICVPE101217



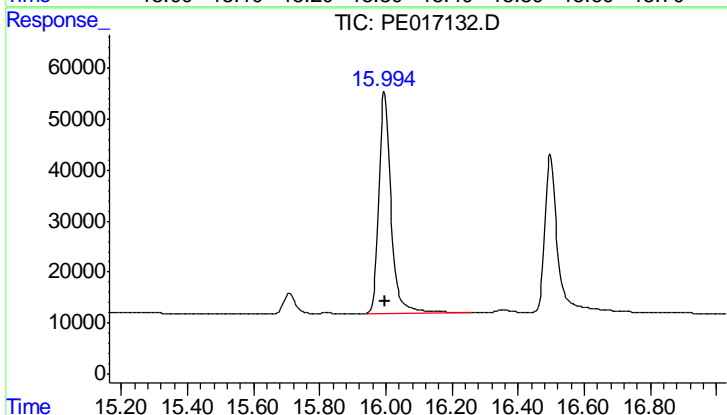
#15 Picloram

R.T.: 16.498 min
 Delta R.T.: 0.001 min
 Response: 826520
 Conc: 728.64 ng/ml



#16 DCPA

R.T.: 15.337 min
 Delta R.T.: -0.002 min
 Response: 531117
 Conc: 761.89 ng/ml



#16 DCPA

R.T.: 15.996 min
 Delta R.T.: 0.000 min
 Response: 1102811
 Conc: 763.60 ng/ml