

Data Path : P:\HPCHEM1\ECD_E\Data\PE101217\
 Data File : PE017134.D
 Signal(s) : Signal #1: ECD1A.CH Signal #2: ECD2B.CH
 Acq On : 13 Oct 2017 00:59
 Operator : UA/AJ
 Sample : HSTDCCC750
 Misc :
 ALS Vial : 10 Sample Multiplier: 1

Instrument :
 ECD_E
 ClientSampleId :
 HSTDCCC750

Integration File signal 1: autoint1.e
 Integration File signal 2: autoint2.e
 Quant Time: Oct 13 07:30:55 2017
 Quant Method : P:\HPCHEM1\ECD_E\Method\PE101217.M
 Quant Title : 8080.M
 QLast Update : Fri Oct 13 07:26:24 2017
 Response via : Initial Calibration
 Integrator: ChemStation

Volume Inj. : 2 µl
 Signal #1 Phase : ZB-35-HT Inferno Signal #2 Phase: ZB-XLB-HT Inferno
 Signal #1 Info : 30M x 0.25mm x0.2 Signal #2 Info : 30M x 0.25mm x 0.25µm

Compound	RT#1	RT#2	Resp#1	Resp#2	ng/ml	ng/ml

System Monitoring Compounds						
4) S 2,4-DCAA	10.449	11.045	78654	107299	835.095	742.000
Target Compounds						
1) T Dalapon	3.052	3.248	153041	166190	758.009	632.480
2) T 3,5-DICHL...	9.157	9.402	113106	159620	766.139	681.730
3) T 4-Nitroph...	9.511	10.275	48542	69728	807.313	668.974
5) T DICAMBA	10.560	11.204	273165	353998	777.035	695.547
8) T DICHLORPROP	11.603	12.164	74216	120189	784.472	722.329
9) T 2,4-D	11.960	12.729	95472	143714	806.822	715.582
10) T Pentachlo...	12.998	13.412	1026926	1597563	771.347	727.459
11) T 2,4,5-TP ...	13.105	13.596	428400	614144	742.322	746.762
12) T 2,4,5-T	13.527	14.236	372683	672691	789.584	740.587
13) T 2,4-DB	14.168	14.823	54825	78466	750.104	742.127
14) T DINOSEB	14.316	14.654	322456	547820	767.105	743.462
15) T Picloram	15.142	16.495	391727	821111	735.388	723.876
16) T DCPA	15.336	15.993	527097	1074787	756.126	744.197

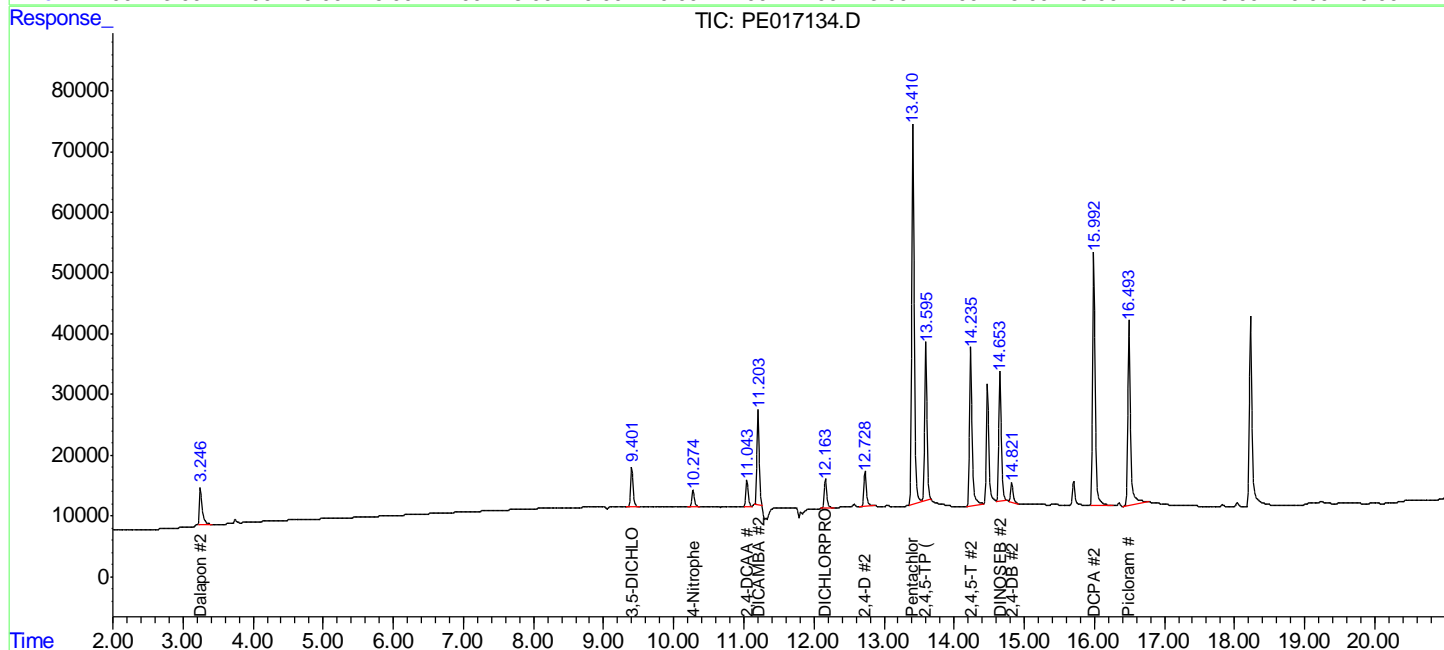
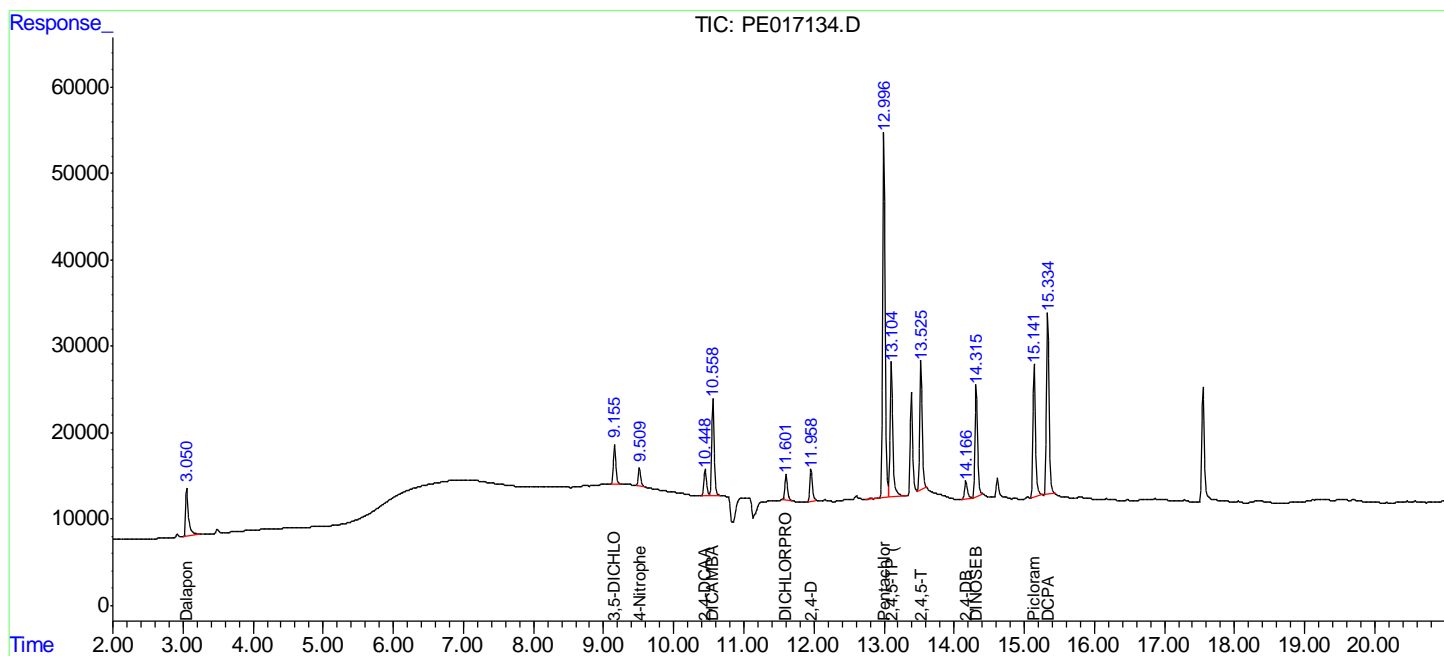
(f)=RT Delta > 1/2 Window (#)=Amounts differ by > 25% (m)=manual int.

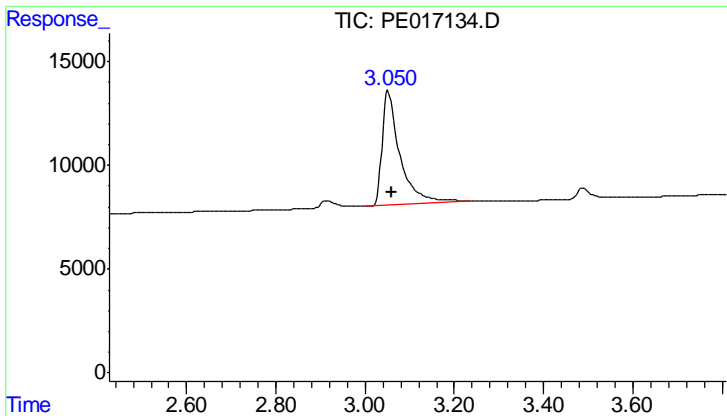
Data Path : P:\HPCHEM1\ECD_E\Data\PE101217\
 Data File : PE017134.D
 Signal(s) : Signal #1: ECD1A.CH Signal #2: ECD2B.CH
 Acq On : 13 Oct 2017 00:59
 Operator : UA/AJ
 Sample : HSTDCCC750
 Misc :
 ALS Vial : 10 Sample Multiplier: 1

Instrument :
 ECD_E
 ClientSampleId :
 HSTDCCC750

Integration File signal 1: autoint1.e
 Integration File signal 2: autoint2.e
 Quant Time: Oct 13 07:30:55 2017
 Quant Method : P:\HPCHEM1\ECD_E\Method\PE101217.M
 Quant Title : 8080.M
 QLast Update : Fri Oct 13 07:26:24 2017
 Response via : Initial Calibration
 Integrator: ChemStation

Volume Inj. : 2 µl
 Signal #1 Phase : ZB-35-HT Inferno Signal #2 Phase: ZB-XLB-HT Inferno
 Signal #1 Info : 30M x 0.25mm x0.2 Signal #2 Info : 30M x 0.25mm x 0.25µm

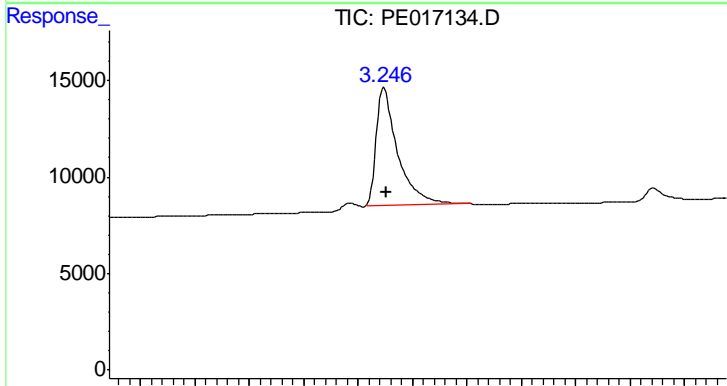




#1 Dalapon

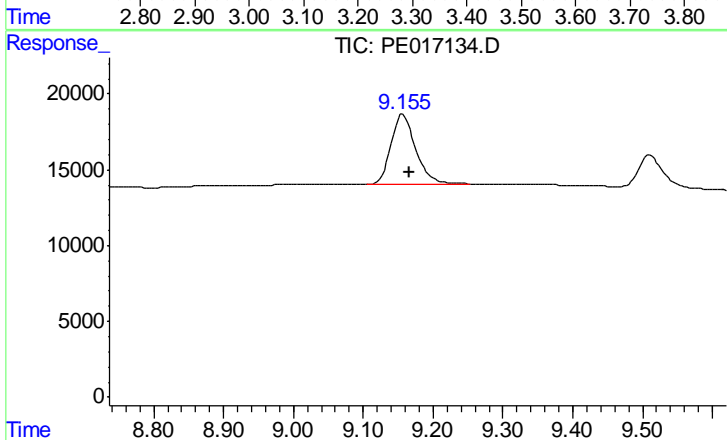
R.T.: 3.052 min
 Delta R.T.: -0.007 min
 Response: 153041
 Conc: 758.01 ng/ml

Instrument :
 ECD_E
 ClientSampleId :
 HSTDCCC750



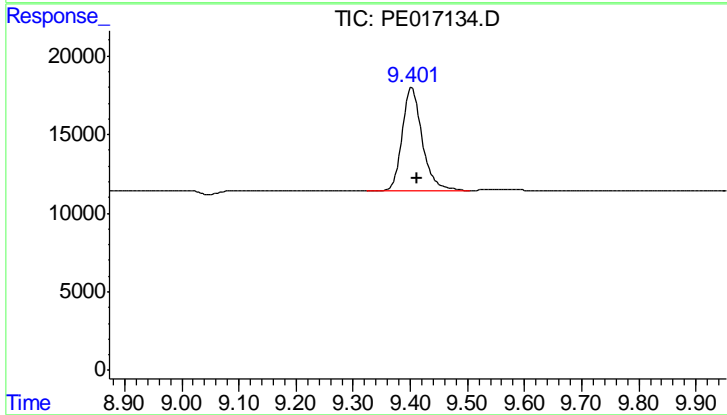
#1 Dalapon

R.T.: 3.248 min
 Delta R.T.: -0.004 min
 Response: 166190
 Conc: 632.48 ng/ml



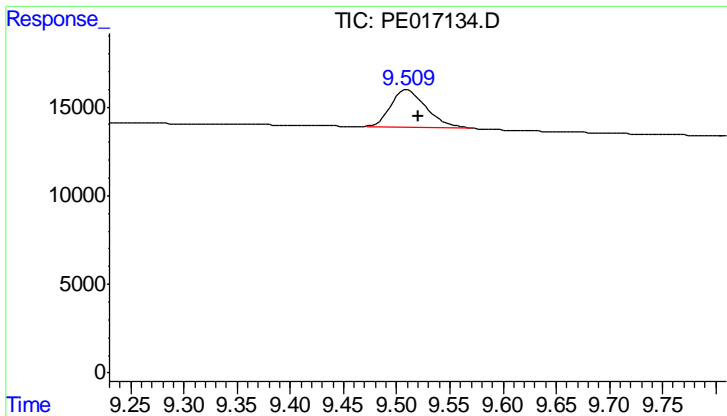
#2 3,5-DICHLOROBENZOIC ACID

R.T.: 9.157 min
 Delta R.T.: -0.010 min
 Response: 113106
 Conc: 766.14 ng/ml



#2 3,5-DICHLOROBENZOIC ACID

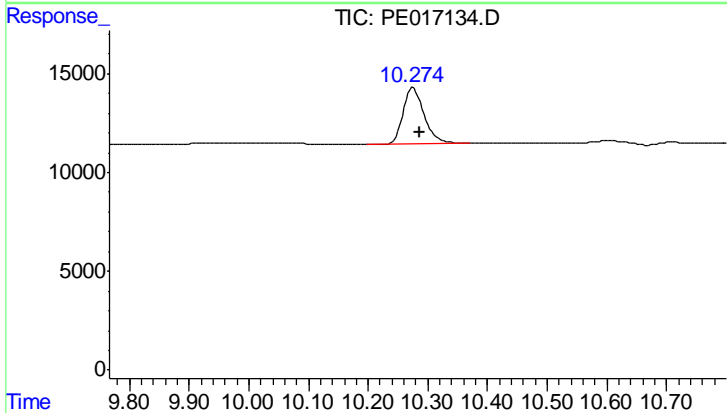
R.T.: 9.402 min
 Delta R.T.: -0.011 min
 Response: 159620
 Conc: 681.73 ng/ml



#3 4-Nitrophenol

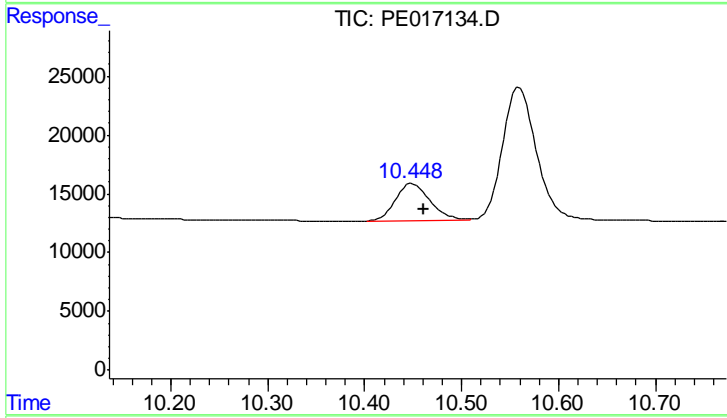
R.T.: 9.511 min
 Delta R.T.: -0.010 min
 Response: 48542
 Conc: 807.31 ng/ml

Instrument :
 ECD_E
 ClientSampleId :
 HSTDCCC750



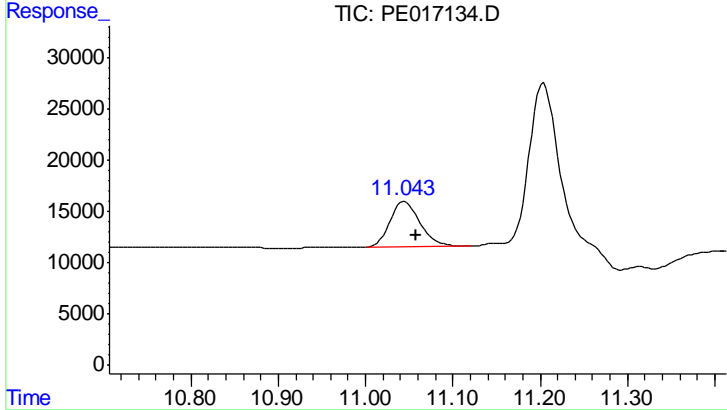
#3 4-Nitrophenol

R.T.: 10.275 min
 Delta R.T.: -0.010 min
 Response: 69728
 Conc: 668.97 ng/ml



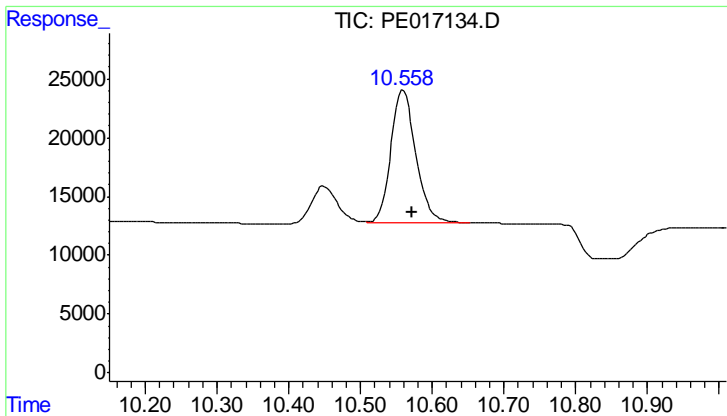
#4 2,4-DCAA

R.T.: 10.449 min
 Delta R.T.: -0.012 min
 Response: 78654
 Conc: 835.10 ng/ml



#4 2,4-DCAA

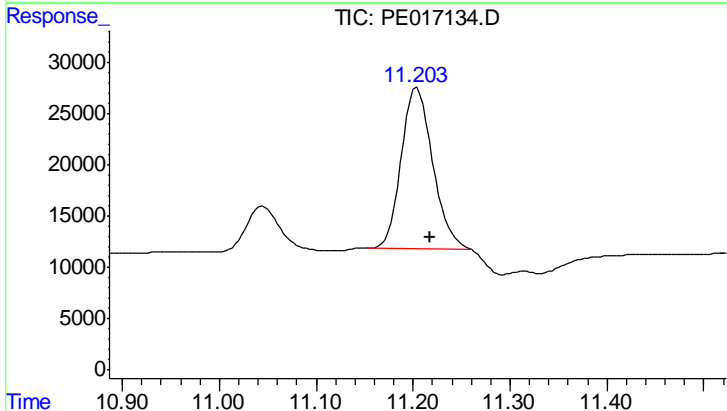
R.T.: 11.045 min
 Delta R.T.: -0.013 min
 Response: 107299
 Conc: 742.00 ng/ml



#5 DICAMBA

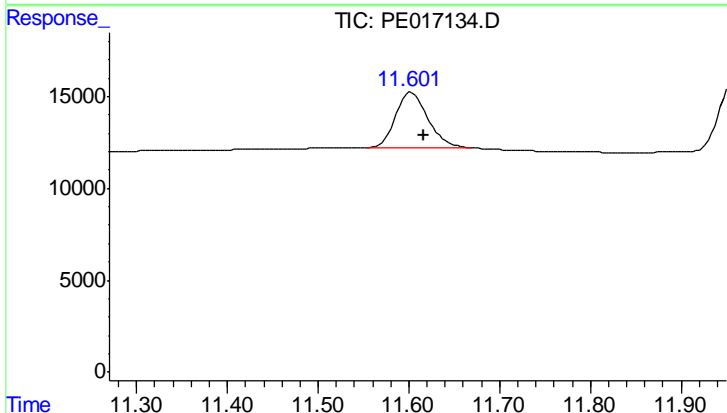
R.T.: 10.560 min
 Delta R.T.: -0.011 min
 Response: 273165
 Conc: 777.03 ng/ml

Instrument :
 ECD_E
 ClientSampleId :
 HSTDCCC750



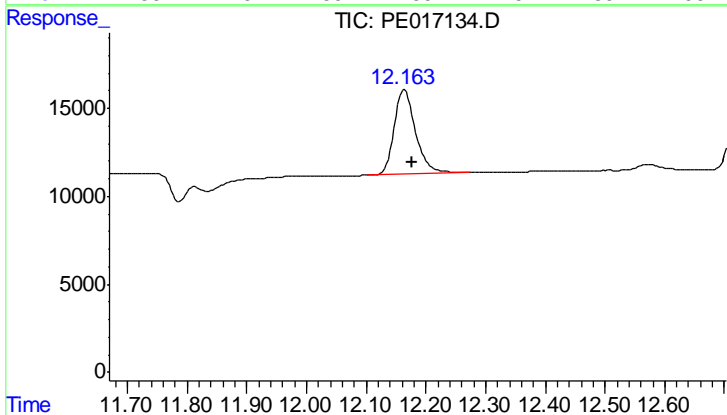
#5 DICAMBA

R.T.: 11.204 min
 Delta R.T.: -0.013 min
 Response: 353998
 Conc: 695.55 ng/ml



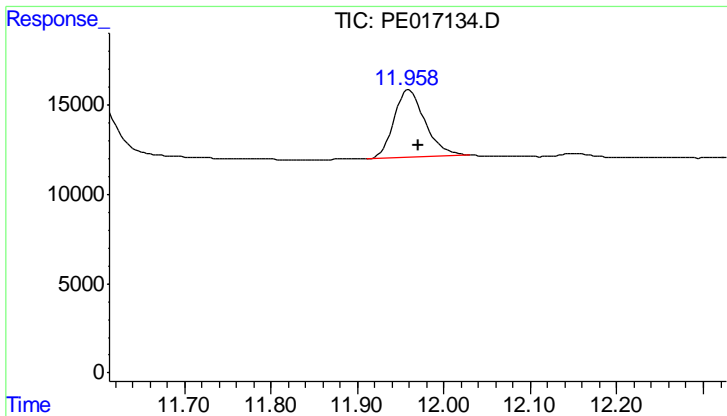
#8 DICHLORPROP

R.T.: 11.603 min
 Delta R.T.: -0.014 min
 Response: 74216
 Conc: 784.47 ng/ml



#8 DICHLORPROP

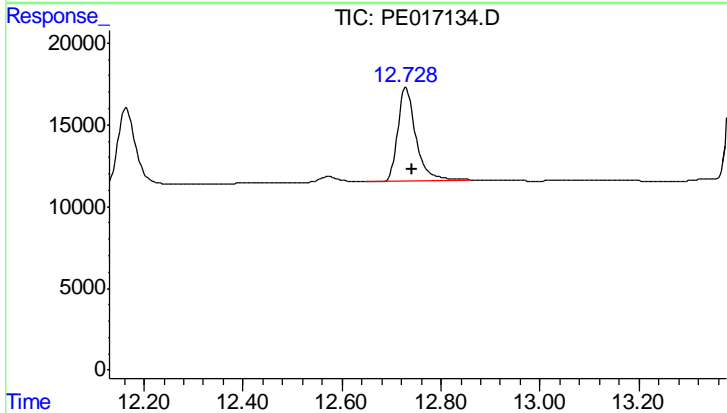
R.T.: 12.164 min
 Delta R.T.: -0.012 min
 Response: 120189
 Conc: 722.33 ng/ml



#9 2,4-D

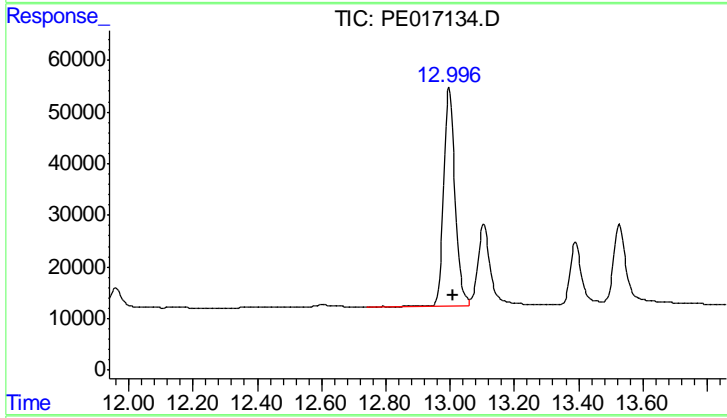
R.T.: 11.960 min
 Delta R.T.: -0.011 min
 Response: 95472
 Conc: 806.82 ng/ml

Instrument :
 ECD_E
 ClientSampleId :
 HSTDCCC750



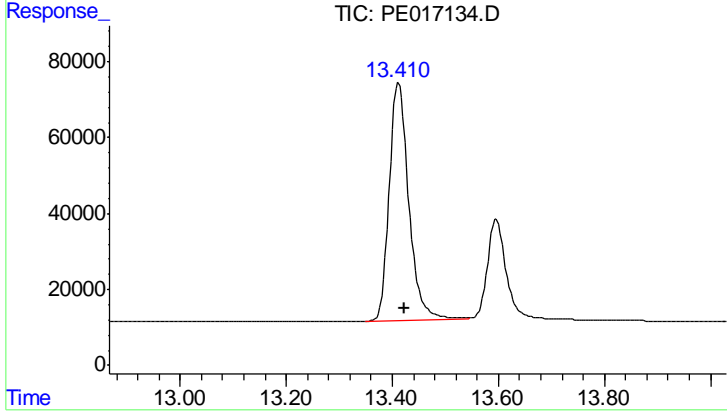
#9 2,4-D

R.T.: 12.729 min
 Delta R.T.: -0.013 min
 Response: 143714
 Conc: 715.58 ng/ml



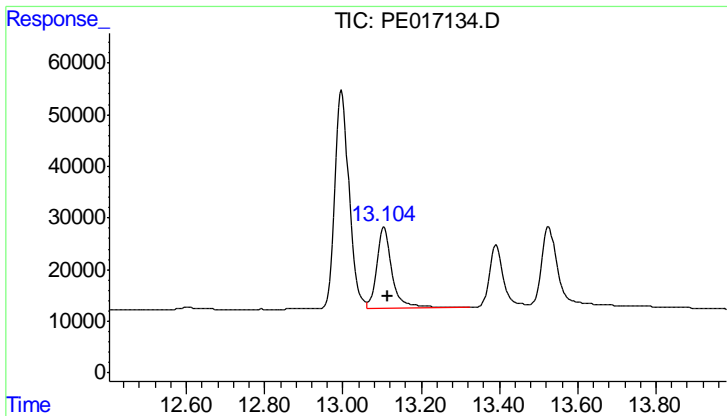
#10 Pentachlorophenol

R.T.: 12.998 min
 Delta R.T.: -0.011 min
 Response: 1026926
 Conc: 771.35 ng/ml



#10 Pentachlorophenol

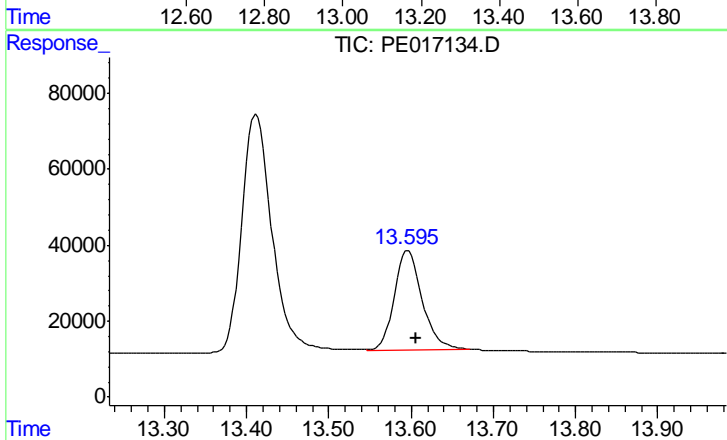
R.T.: 13.412 min
 Delta R.T.: -0.011 min
 Response: 1597563
 Conc: 727.46 ng/ml



#11 2,4,5-TP (SILVEX)

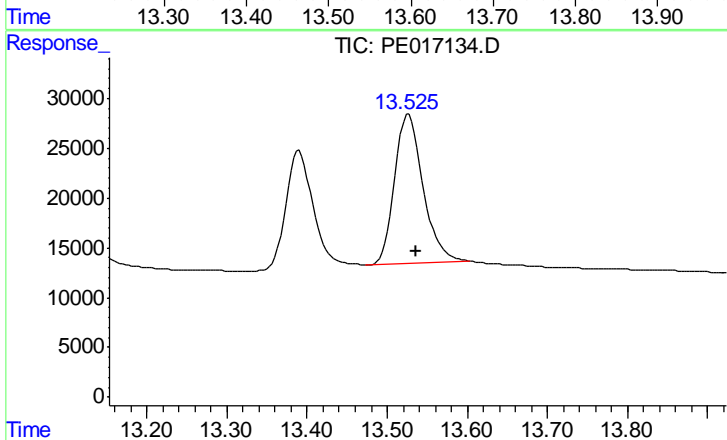
R.T.: 13.105 min
 Delta R.T.: -0.010 min
 Response: 428400
 Conc: 742.32 ng/ml

Instrument :
 ECD_E
 ClientSampleId :
 HSTDCCC750



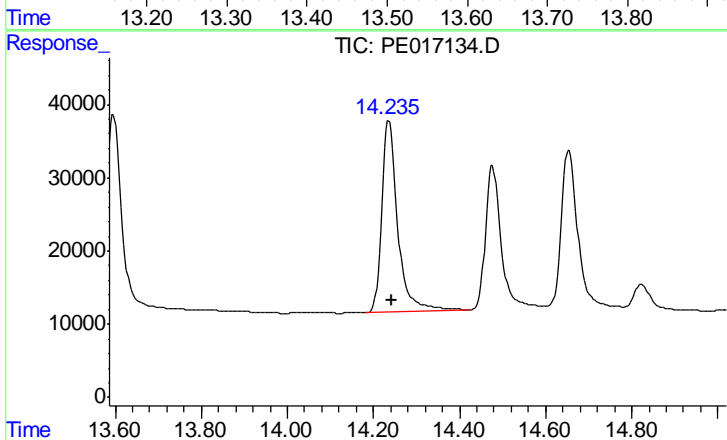
#11 2,4,5-TP (SILVEX)

R.T.: 13.596 min
 Delta R.T.: -0.009 min
 Response: 614144
 Conc: 746.76 ng/ml



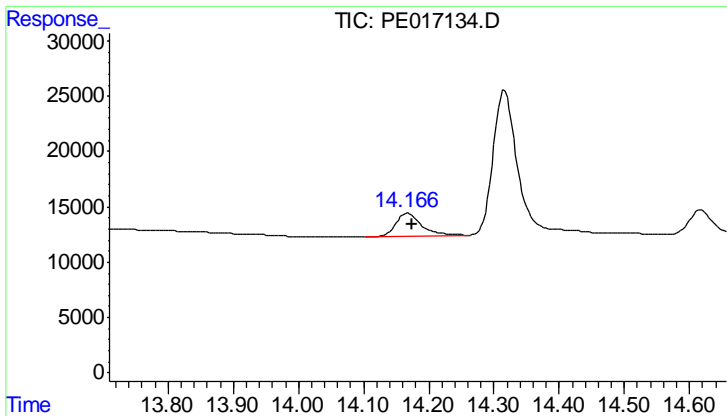
#12 2,4,5-T

R.T.: 13.527 min
 Delta R.T.: -0.009 min
 Response: 372683
 Conc: 789.58 ng/ml



#12 2,4,5-T

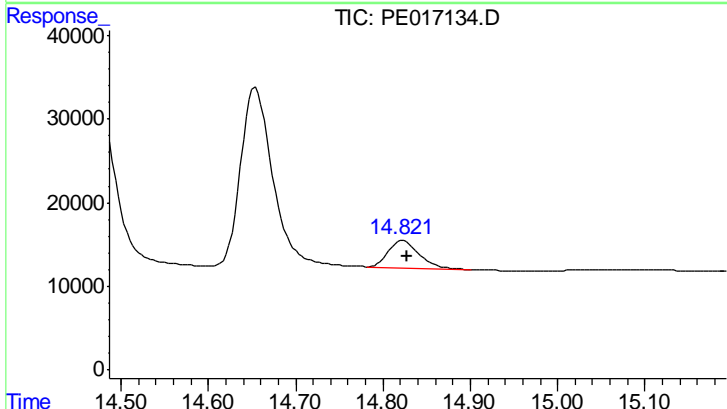
R.T.: 14.236 min
 Delta R.T.: -0.007 min
 Response: 672691
 Conc: 740.59 ng/ml



#13 2,4-DB

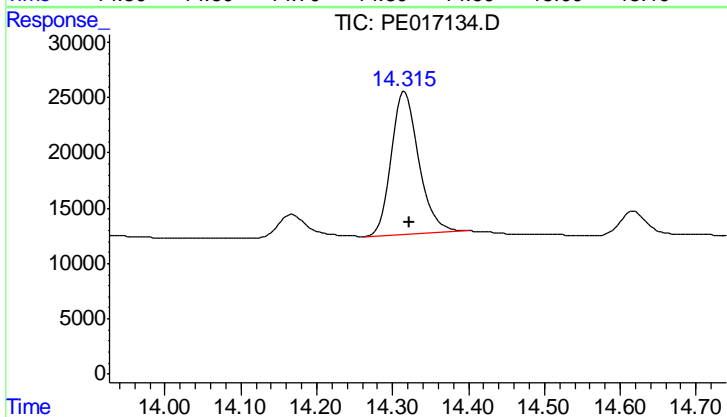
R.T.: 14.168 min
 Delta R.T.: -0.007 min
 Response: 54825
 Conc: 750.10 ng/ml

Instrument :
 ECD_E
 ClientSampleId :
 HSTDCCC750



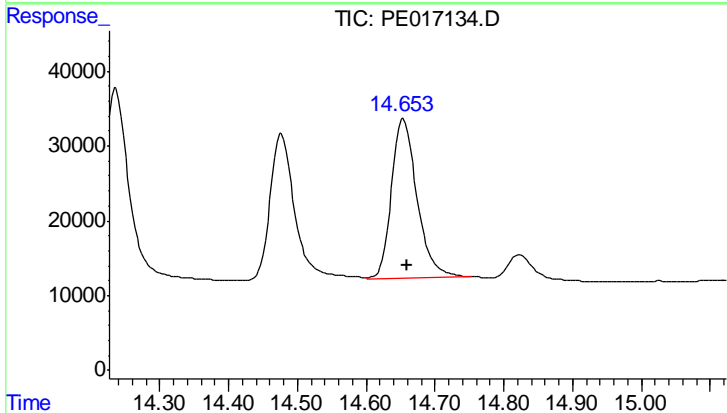
#13 2,4-DB

R.T.: 14.823 min
 Delta R.T.: -0.005 min
 Response: 78466
 Conc: 742.13 ng/ml



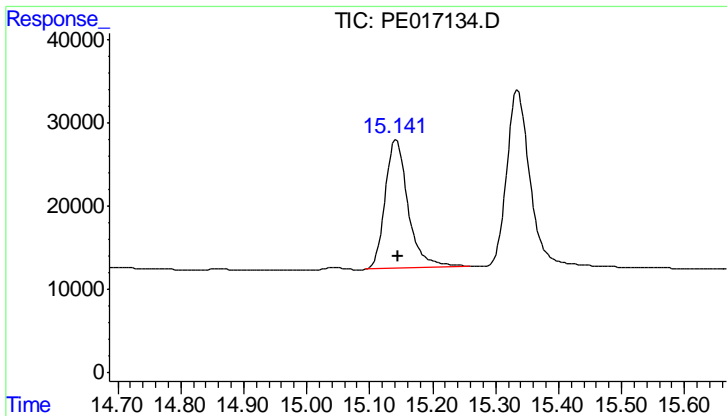
#14 DINOSEB

R.T.: 14.316 min
 Delta R.T.: -0.006 min
 Response: 322456
 Conc: 767.10 ng/ml



#14 DINOSEB

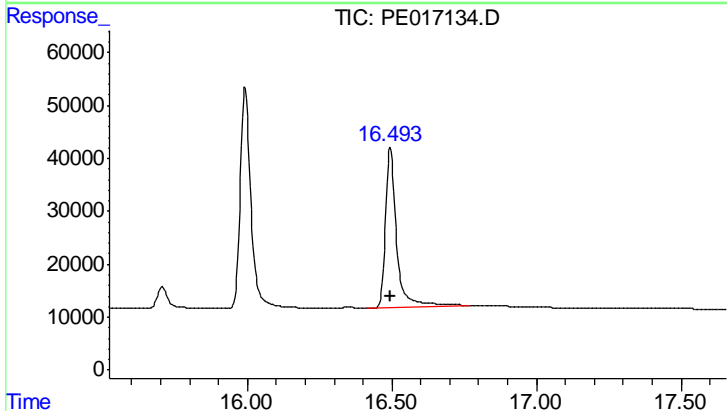
R.T.: 14.654 min
 Delta R.T.: -0.006 min
 Response: 547820
 Conc: 743.46 ng/ml



#15 Picloram

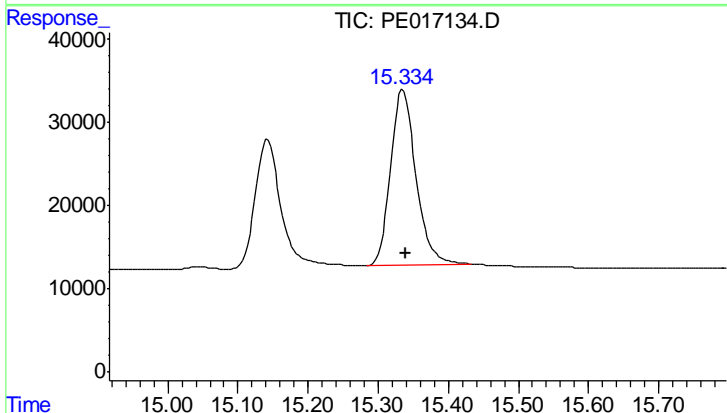
R.T.: 15.142 min
 Delta R.T.: -0.003 min
 Response: 391727
 Conc: 735.39 ng/ml

Instrument :
 ECD_E
 ClientSampleId :
 HSTDCCC750



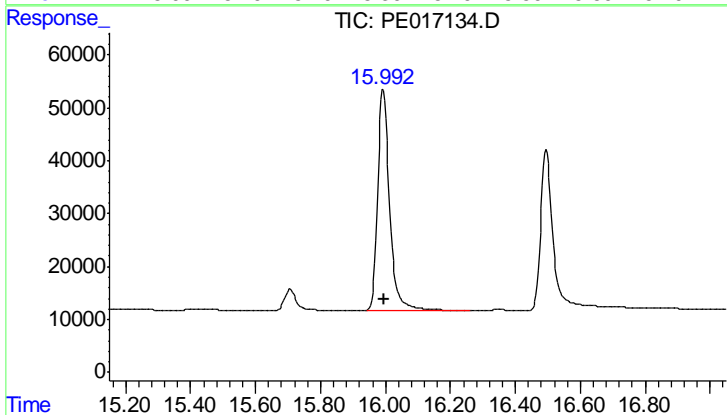
#15 Picloram

R.T.: 16.495 min
 Delta R.T.: -0.001 min
 Response: 821111
 Conc: 723.88 ng/ml



#16 DCPA

R.T.: 15.336 min
 Delta R.T.: -0.003 min
 Response: 527097
 Conc: 756.13 ng/ml



#16 DCPA

R.T.: 15.993 min
 Delta R.T.: -0.003 min
 Response: 1074787
 Conc: 744.20 ng/ml