

Data Path : P:\HPCHEM1\ECD_E\Data\PE101217\
Data File : PE017139.D
Signal(s) : Signal #1: ECD1A.CH Signal #2: ECD2B.CH
Acq On : 13 Oct 2017 3:24
Operator : UA/AJ
Sample : I5563-06RE
Misc :
ALS Vial : 15 Sample Multiplier: 1

Instrument :
ECD_E
ClientSampleId :
NYSEG-PH4-SB-ESMI-6RE

Integration File signal 1: autoint1.e
Integration File signal 2: autoint2.e
Quant Time: Oct 13 07:31:59 2017
Quant Method : P:\HPCHEM1\ECD_E\Method\PE101217.M
Quant Title : 8080.M
QLast Update : Fri Oct 13 07:26:24 2017
Response via : Initial Calibration
Integrator: ChemStation

Volume Inj. : 2 µl
Signal #1 Phase : ZB-35-HT Inferno Signal #2 Phase: ZB-XLB-HT Infernon
Signal #1 Info : 30M x 0.25mm x0.2 Signal #2 Info : 30M x 0.25mm x 0.25µm

Compound	RT#1	RT#2	Resp#1	Resp#2	ng/ml	ng/ml
----------	------	------	--------	--------	-------	-------

System Monitoring Compounds

Target Compounds

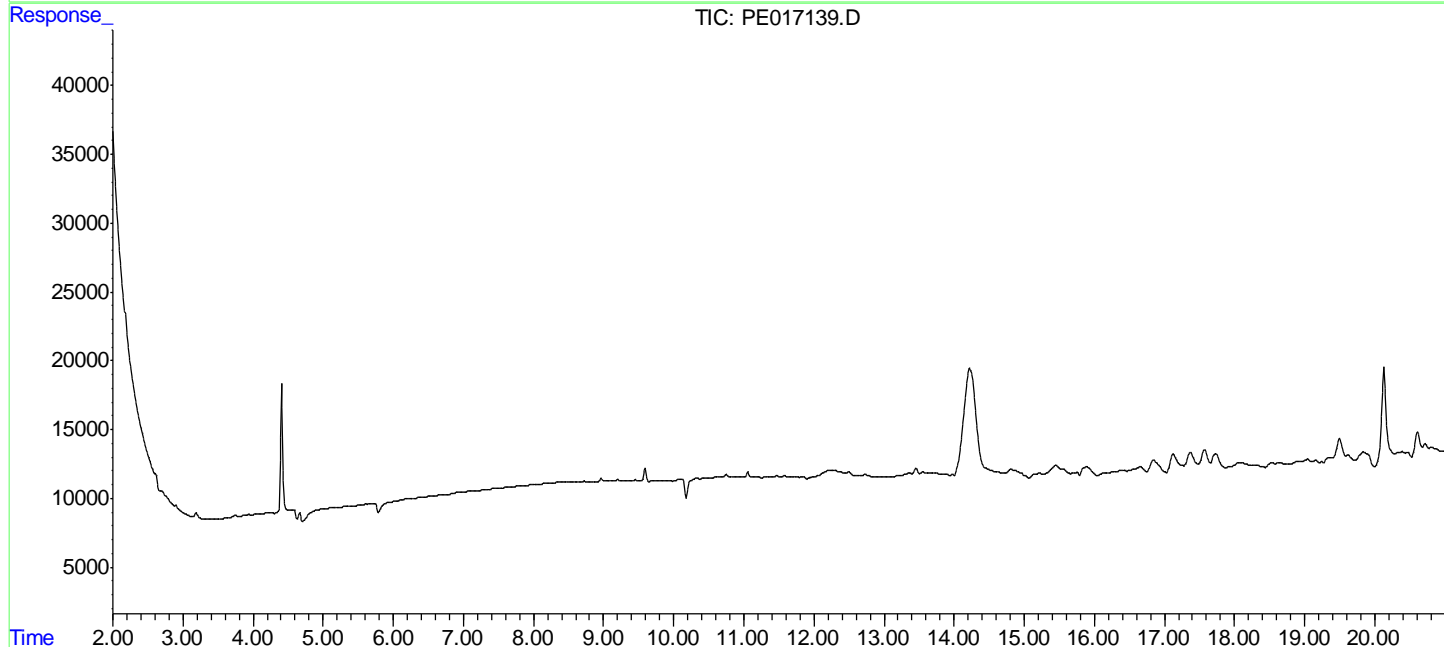
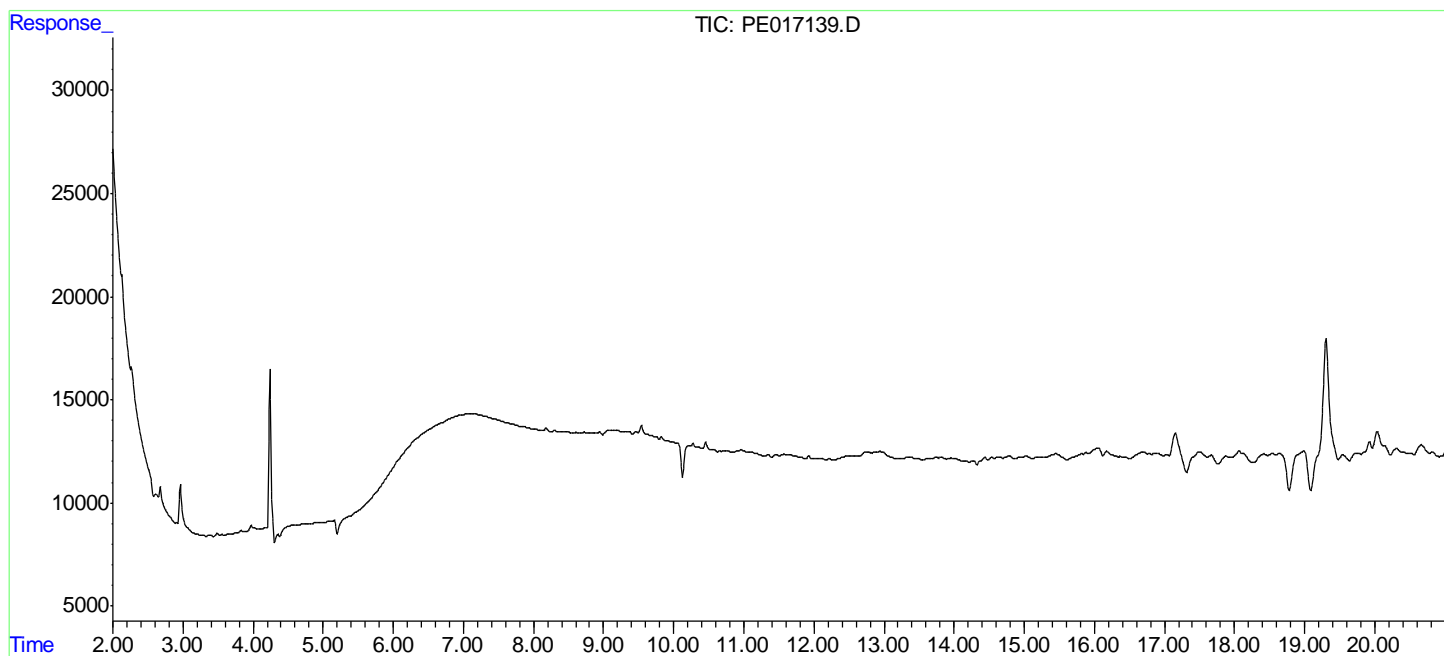
(f)=RT Delta > 1/2 Window (#)=Amounts differ by > 25% (m)=manual int.

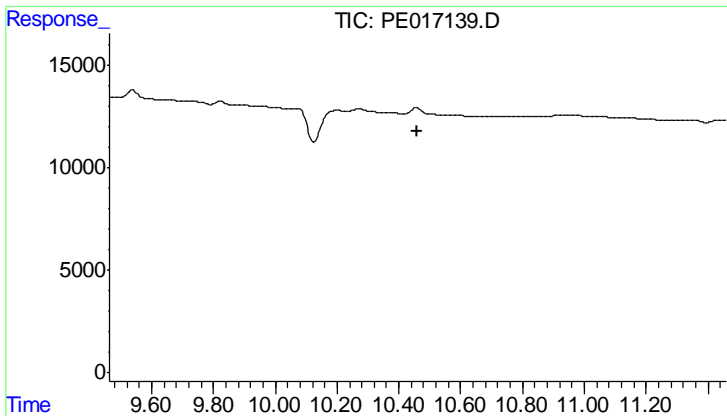
Data Path : P:\HPCHEM1\ECD_E\Data\PE101217\
 Data File : PE017139.D
 Signal(s) : Signal #1: ECD1A.CH Signal #2: ECD2B.CH
 Acq On : 13 Oct 2017 3:24
 Operator : UA/AJ
 Sample : I5563-06RE
 Misc :
 ALS Vial : 15 Sample Multiplier: 1

Instrument :
 ECD_E
ClientSampleId :
 NYSEG-PH4-SB-ESMI-6RE

Integration File signal 1: autoint1.e
 Integration File signal 2: autoint2.e
 Quant Time: Oct 13 07:31:59 2017
 Quant Method : P:\HPCHEM1\ECD_E\Method\PE101217.M
 Quant Title : 8080.M
 QLast Update : Fri Oct 13 07:26:24 2017
 Response via : Initial Calibration
 Integrator: ChemStation

Volume Inj. : 2 µl
 Signal #1 Phase : ZB-35-HT Inferno Signal #2 Phase: ZB-XLB-HT Infernon
 Signal #1 Info : 30M x 0.25mm x0.2 Signal #2 Info : 30M x 0.25mm x 0.25µm

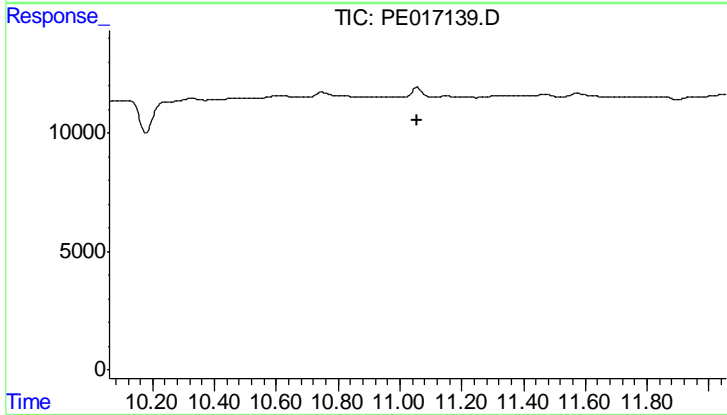




#4 2,4-DCAA

R.T.: 0.000 min
 Exp R.T.: 10.461 min
 Response: 0
 Conc: N.D.

Instrument :
 ECD_E
ClientSampleId :
 NYSEG-PH4-SB-ESMI-6RE



#4 2,4-DCAA

R.T.: 0.000 min
 Exp R.T.: 11.058 min
 Response: 0
 Conc: N.D.