

Data Path : P:\HPCHEM1\ECD\_E\Data\PE101217\  
 Data File : PE017141.D  
 Signal(s) : Signal #1: ECD1A.CH Signal #2: ECD2B.CH  
 Acq On : 13 Oct 2017 4:22  
 Operator : UA/AJ  
 Sample : PB102993BL  
 Misc :  
 ALS Vial : 17 Sample Multiplier: 1

Instrument :  
 ECD\_E  
 ClientSampleId :  
 PB102993BL

Integration File signal 1: autoint1.e  
 Integration File signal 2: autoint2.e  
 Quant Time: Oct 13 07:32:26 2017  
 Quant Method : P:\HPCHEM1\ECD\_E\Method\PE101217.M  
 Quant Title : 8080.M  
 QLast Update : Fri Oct 13 07:26:24 2017  
 Response via : Initial Calibration  
 Integrator: ChemStation

Volume Inj. : 2 µl  
 Signal #1 Phase : ZB-35-HT Inferno Signal #2 Phase: ZB-XLB-HT Infernon  
 Signal #1 Info : 30M x 0.25mm x0.2 Signal #2 Info : 30M x 0.25mm x 0.25µm

Compound	RT#1	RT#2	Resp#1	Resp#2	ng/ml	ng/ml
-----						
System Monitoring Compounds						
4) S 2,4-DCAA	10.459	11.056	41496	46593	440.578	322.203 #

Target Compounds

-----

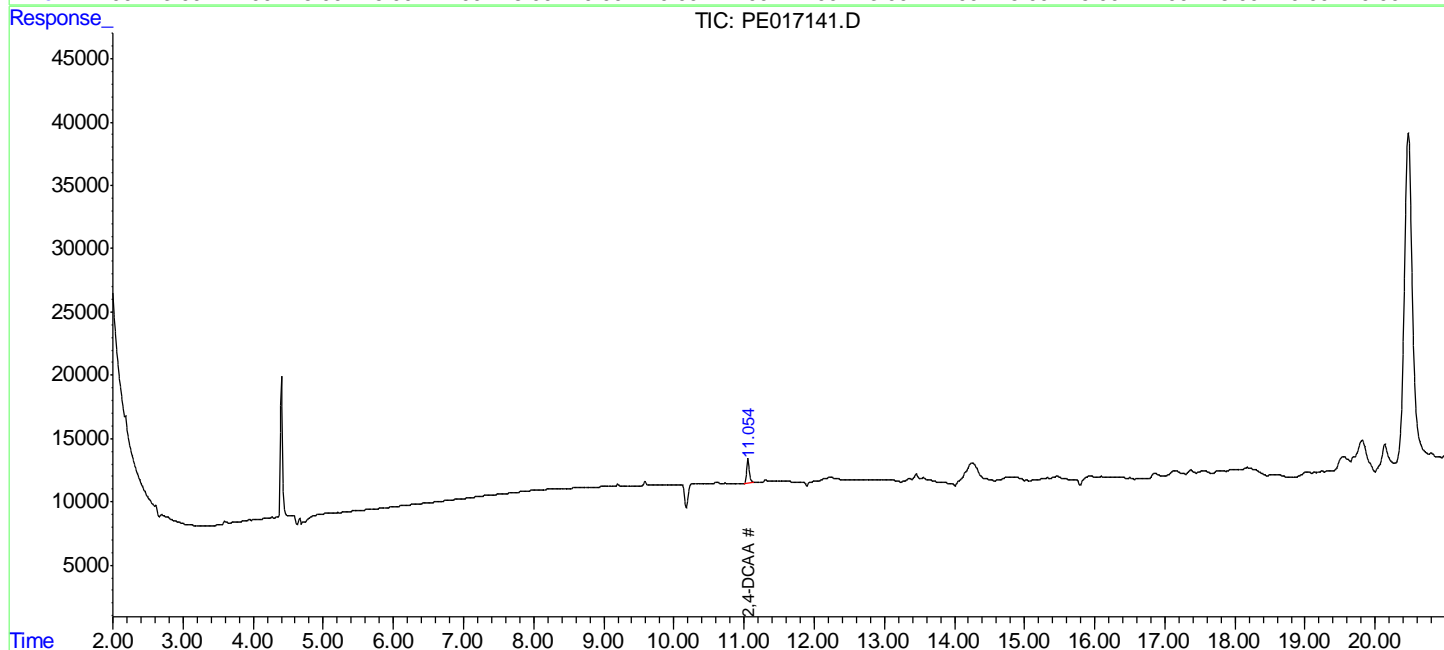
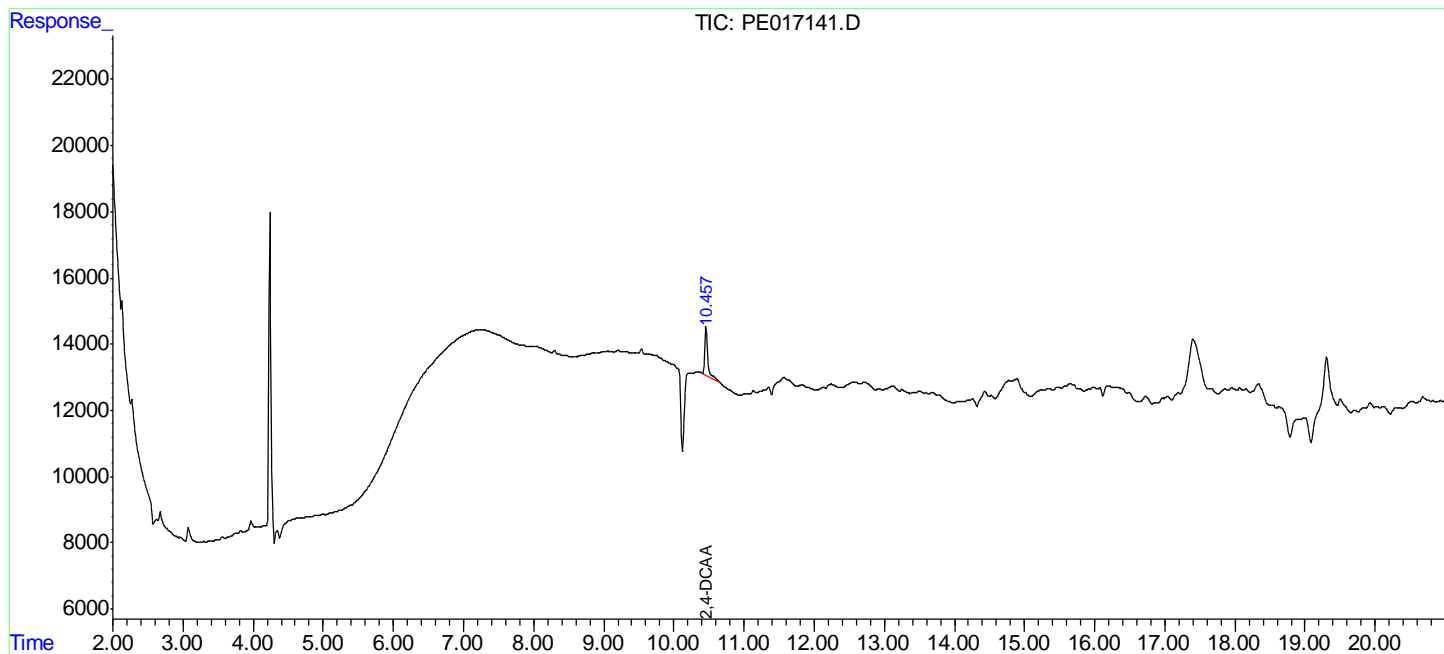
(f)=RT Delta > 1/2 Window (#)=Amounts differ by > 25% (m)=manual int.

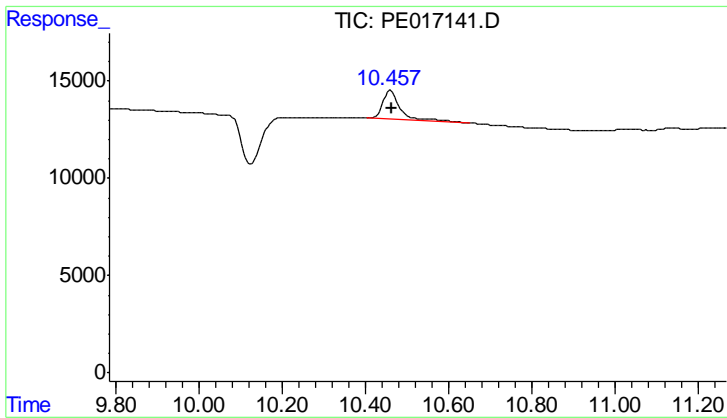
Data Path : P:\HPCHEM1\ECD\_E\Data\PE101217\  
 Data File : PE017141.D  
 Signal(s) : Signal #1: ECD1A.CH Signal #2: ECD2B.CH  
 Acq On : 13 Oct 2017 4:22  
 Operator : UA/AJ  
 Sample : PB102993BL  
 Misc :  
 ALS Vial : 17 Sample Multiplier: 1

Instrument :  
 ECD\_E  
 ClientSampled :  
 PB102993BL

Integration File signal 1: autoint1.e  
 Integration File signal 2: autoint2.e  
 Quant Time: Oct 13 07:32:26 2017  
 Quant Method : P:\HPCHEM1\ECD\_E\Method\PE101217.M  
 Quant Title : 8080.M  
 QLast Update : Fri Oct 13 07:26:24 2017  
 Response via : Initial Calibration  
 Integrator: ChemStation

Volume Inj. : 2 µl  
 Signal #1 Phase : ZB-35-HT Inferno Signal #2 Phase: ZB-XLB-HT Infernon  
 Signal #1 Info : 30M x 0.25mm x0.2 Signal #2 Info : 30M x 0.25mm x 0.25µm

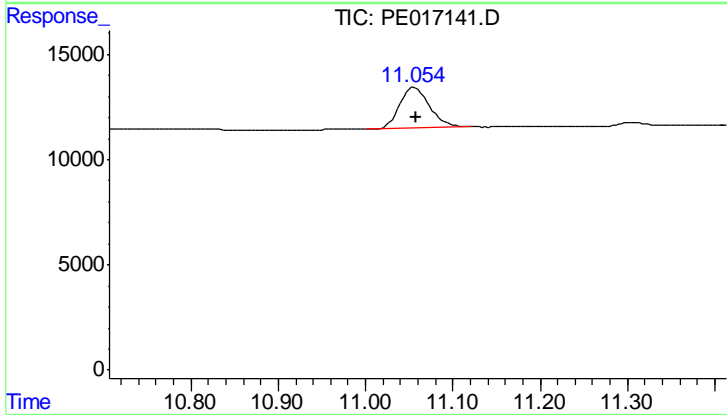




#4 2,4-DCAA

R.T.: 10.459 min  
 Delta R.T.: -0.002 min  
 Response: 41496  
 Conc: 440.58 ng/ml

Instrument :  
 ECD\_E  
 ClientSampleId :  
 PB102993BL



#4 2,4-DCAA

R.T.: 11.056 min  
 Delta R.T.: -0.002 min  
 Response: 46593  
 Conc: 322.20 ng/ml