

Data Path : P:\HPCHEM1\ECD_E\Data\PE101217\
 Data File : PE017144.D
 Signal(s) : Signal #1: ECD1A.CH Signal #2: ECD2B.CH
 Acq On : 13 Oct 2017 5:49
 Operator : UA/AJ
 Sample : PB103037BS
 Misc :
 ALS Vial : 20 Sample Multiplier: 1

Instrument :
 ECD_E
 ClientSampleId :
 PB103037BS

Integration File signal 1: autoint1.e
 Integration File signal 2: autoint2.e
 Quant Time: Oct 13 07:32:56 2017
 Quant Method : P:\HPCHEM1\ECD_E\Method\PE101217.M
 Quant Title : 8080.M
 QLast Update : Fri Oct 13 07:26:24 2017
 Response via : Initial Calibration
 Integrator: ChemStation

Volume Inj. : 2 µl
 Signal #1 Phase : ZB-35-HT Inferno Signal #2 Phase: ZB-XLB-HT Infernon
 Signal #1 Info : 30M x 0.25mm x0.2 Signal #2 Info : 30M x 0.25mm x 0.25µm

Compound	RT#1	RT#2	Resp#1	Resp#2	ng/ml	ng/ml

System Monitoring Compounds						
4) S 2,4-DCAA	10.449	11.045	52202	72654	554.249	502.421
Target Compounds						
1) T Dalapon	3.040	3.235	95483	57035	472.923	217.062 #
2) T 3,5-DICHL...	9.155	9.401	76477	109069	518.028	465.826
3) T 4-Nitroph...	9.510	10.274	32878	47379	546.806	454.556
5) T DICAMBA	10.560	11.205	183276	238643	521.341	468.893
8) T DICHLORPROP	11.604	12.165	49406	77172	522.231	463.800
9) T 2,4-D	11.961	12.730	61876	96332	522.902	479.655
10) T Pentachlo...	13.000	13.413	675068	1055304	507.059	480.539
11) T 2,4,5-TP ...	13.107	13.597	294379	398669	510.093	484.758
12) T 2,4,5-T	13.529	14.238	246797	451389	522.875	496.949
13) T 2,4-DB	14.171	14.825	37215	52372	509.162	495.327
14) T DINOSEB	14.319	14.656	213989	361368	509.068	490.423
15) T Picloram	15.144	16.498	260244	523750	488.555	461.729
16) T DCPA	15.338	15.996	345398	703239	495.478	486.932

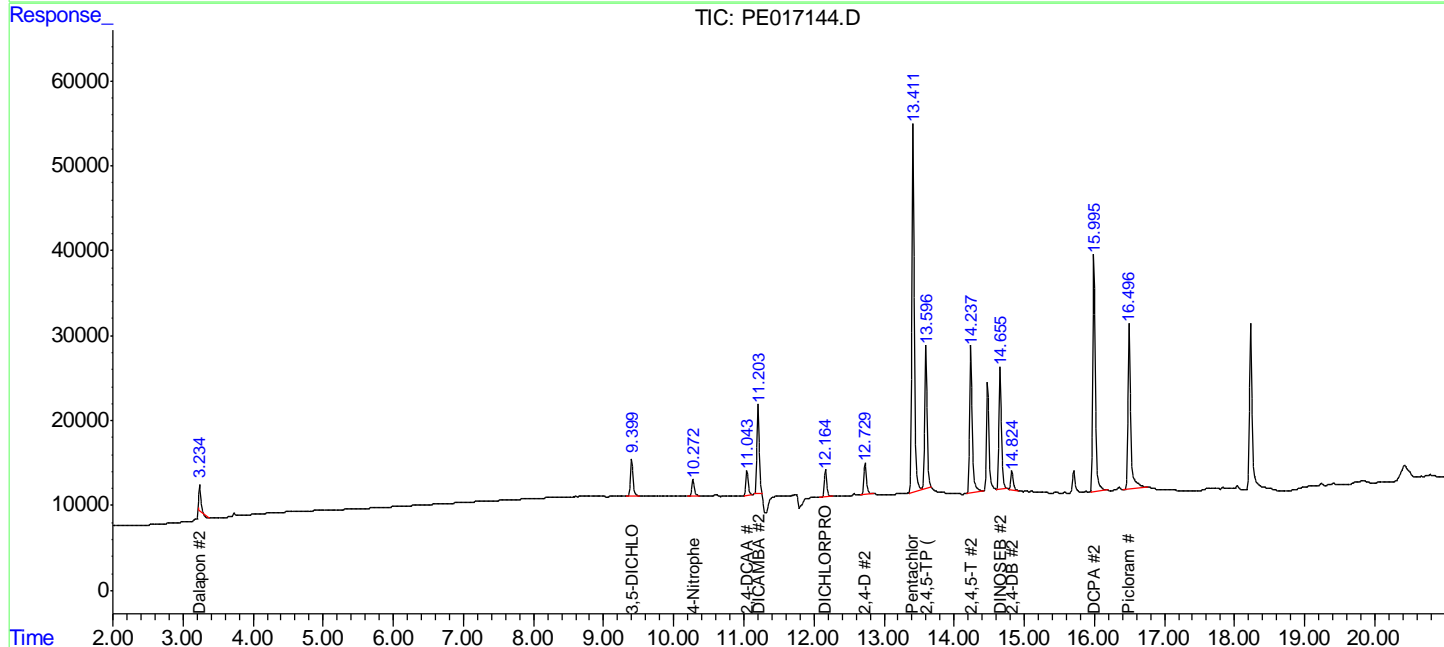
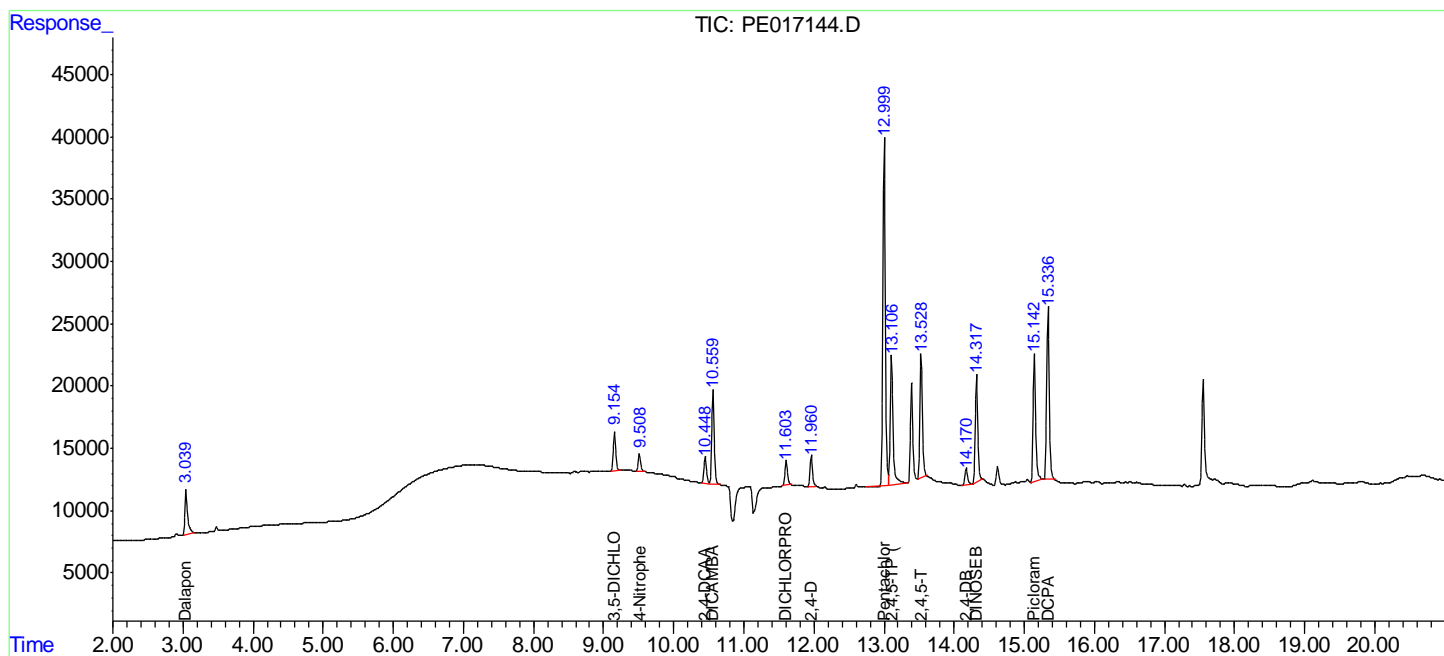
(f)=RT Delta > 1/2 Window (#)=Amounts differ by > 25% (m)=manual int.

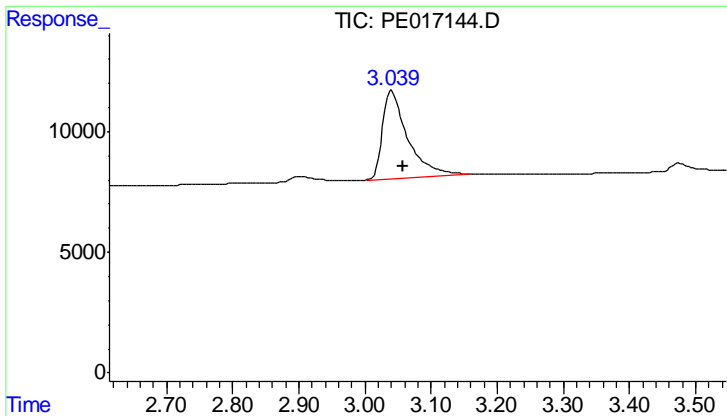
Data Path : P:\HPCHEM1\ECD_E\Data\PE101217\
 Data File : PE017144.D
 Signal(s) : Signal #1: ECD1A.CH Signal #2: ECD2B.CH
 Acq On : 13 Oct 2017 5:49
 Operator : UA/AJ
 Sample : PB103037BS
 Misc :
 ALS Vial : 20 Sample Multiplier: 1

Instrument :
 ECD_E
 ClientSampleId :
 PB103037BS

Integration File signal 1: autoint1.e
 Integration File signal 2: autoint2.e
 Quant Time: Oct 13 07:32:56 2017
 Quant Method : P:\HPCHEM1\ECD_E\Method\PE101217.M
 Quant Title : 8080.M
 QLast Update : Fri Oct 13 07:26:24 2017
 Response via : Initial Calibration
 Integrator: ChemStation

Volume Inj. : 2 µl
 Signal #1 Phase : ZB-35-HT Inferno Signal #2 Phase: ZB-XLB-HT Inferno
 Signal #1 Info : 30M x 0.25mm x0.2 Signal #2 Info : 30M x 0.25mm x 0.25µm

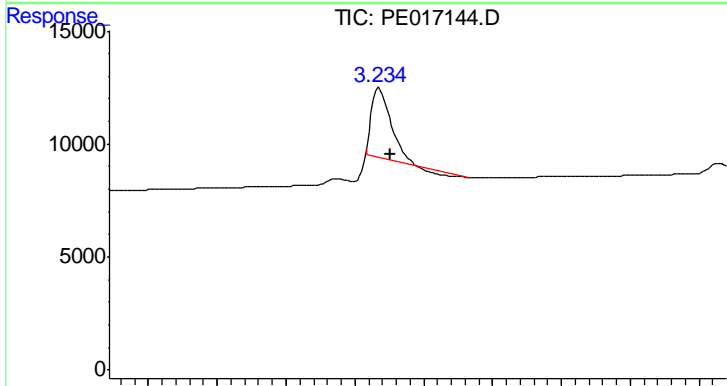




#1 Dalapon

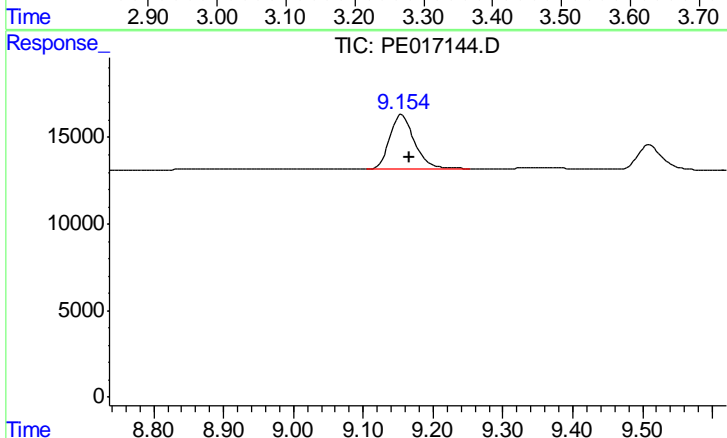
R.T.: 3.040 min
 Delta R.T.: -0.018 min
 Response: 95483
 Conc: 472.92 ng/ml

Instrument :
 ECD_E
 ClientSampleId :
 PB103037BS



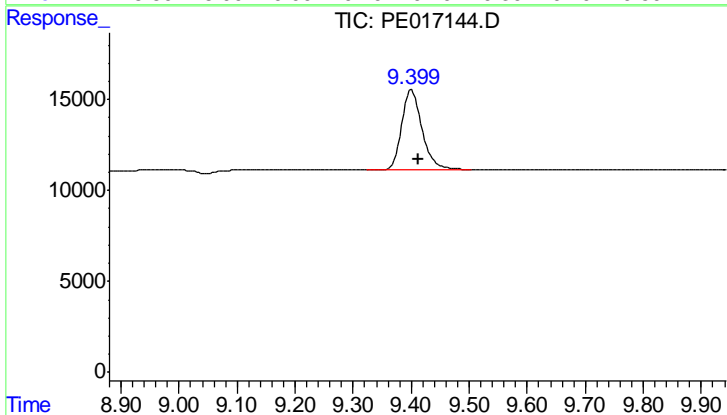
#1 Dalapon

R.T.: 3.235 min
 Delta R.T.: -0.016 min
 Response: 57035
 Conc: 217.06 ng/ml



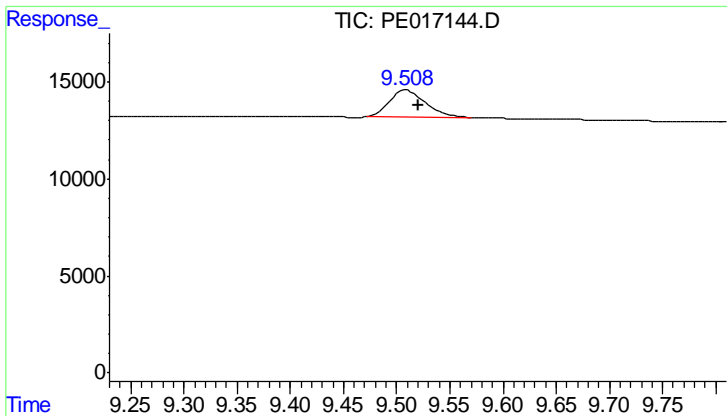
#2 3,5-DICHLOROBENZOIC ACID

R.T.: 9.155 min
 Delta R.T.: -0.012 min
 Response: 76477
 Conc: 518.03 ng/ml



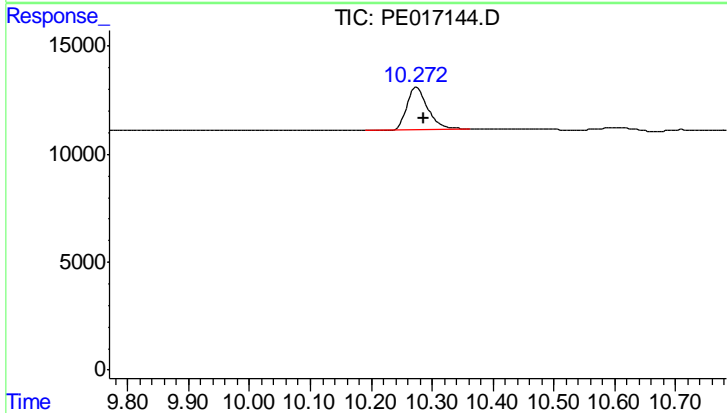
#2 3,5-DICHLOROBENZOIC ACID

R.T.: 9.401 min
 Delta R.T.: -0.012 min
 Response: 109069
 Conc: 465.83 ng/ml

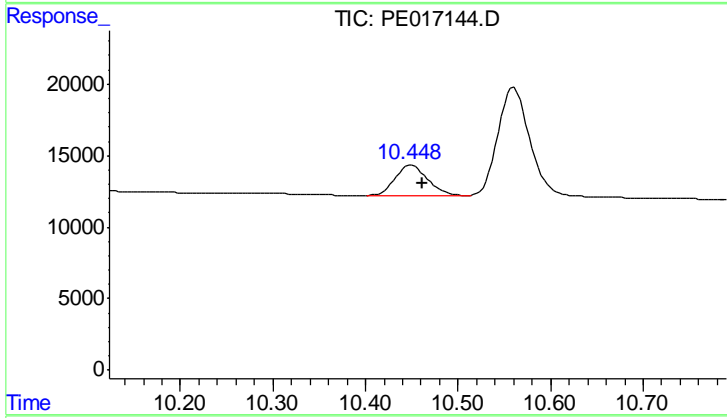


#3 4-Nitrophenol
 R.T.: 9.510 min
 Delta R.T.: -0.011 min
 Response: 32878
 Conc: 546.81 ng/ml

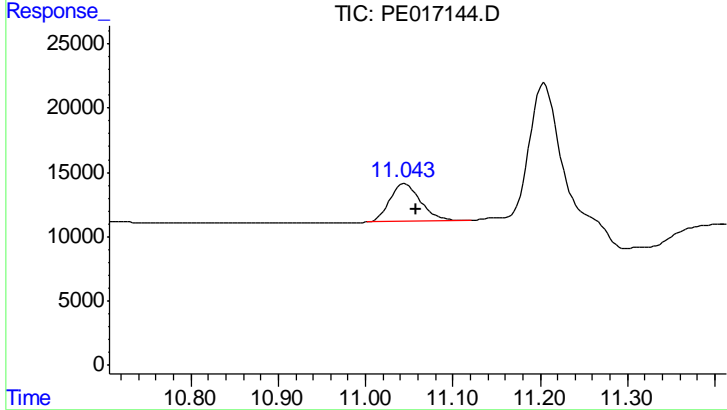
Instrument :
 ECD_E
 ClientSampleId :
 PB103037BS



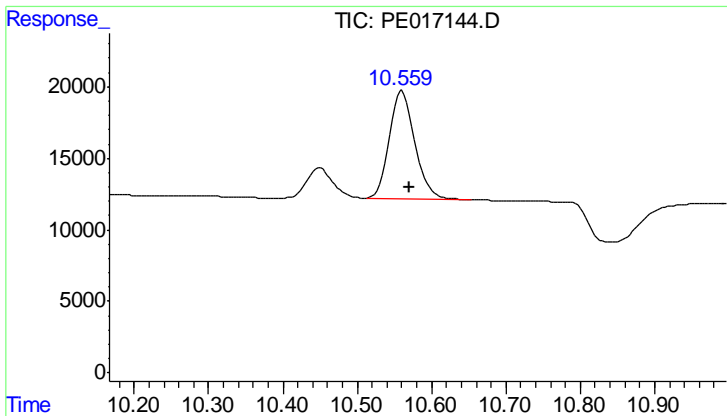
#3 4-Nitrophenol
 R.T.: 10.274 min
 Delta R.T.: -0.012 min
 Response: 47379
 Conc: 454.56 ng/ml



#4 2,4-DCAA
 R.T.: 10.449 min
 Delta R.T.: -0.011 min
 Response: 52202
 Conc: 554.25 ng/ml



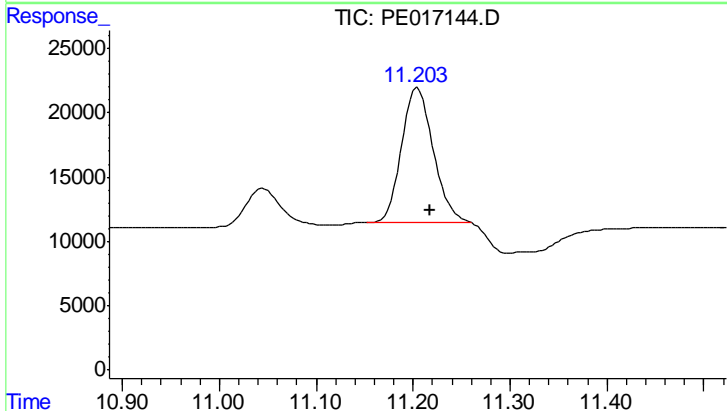
#4 2,4-DCAA
 R.T.: 11.045 min
 Delta R.T.: -0.013 min
 Response: 72654
 Conc: 502.42 ng/ml



#5 DICAMBA

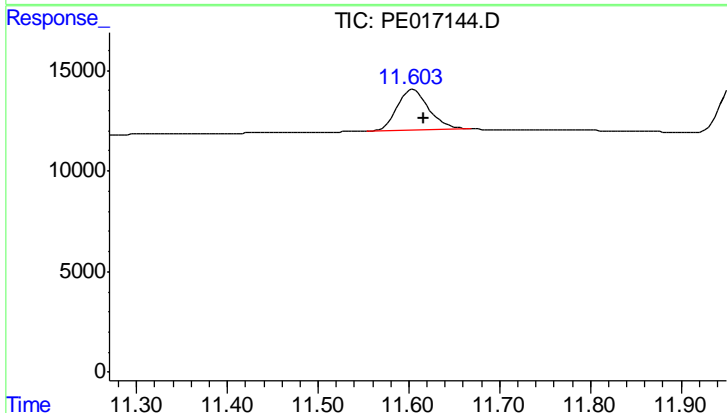
R.T.: 10.560 min
 Delta R.T.: -0.011 min
 Response: 183276
 Conc: 521.34 ng/ml

Instrument :
 ECD_E
 ClientSampleId :
 PB103037BS



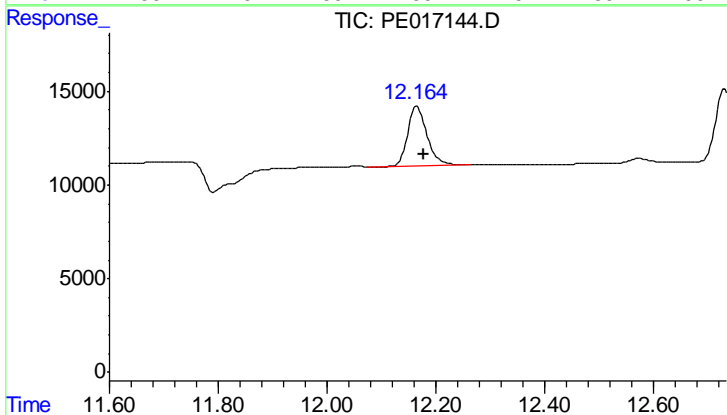
#5 DICAMBA

R.T.: 11.205 min
 Delta R.T.: -0.013 min
 Response: 238643
 Conc: 468.89 ng/ml



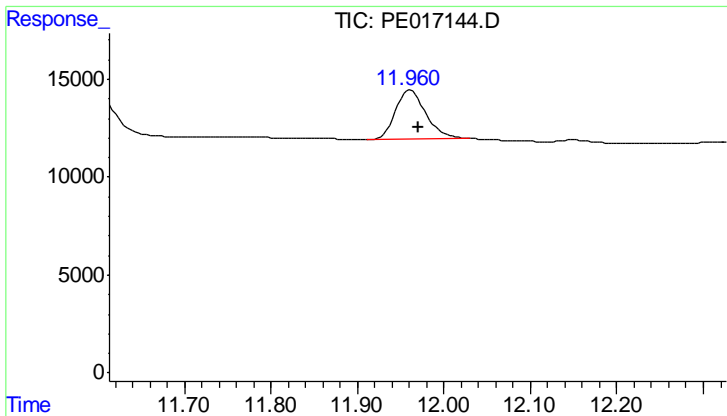
#8 DICHLORPROP

R.T.: 11.604 min
 Delta R.T.: -0.013 min
 Response: 49406
 Conc: 522.23 ng/ml



#8 DICHLORPROP

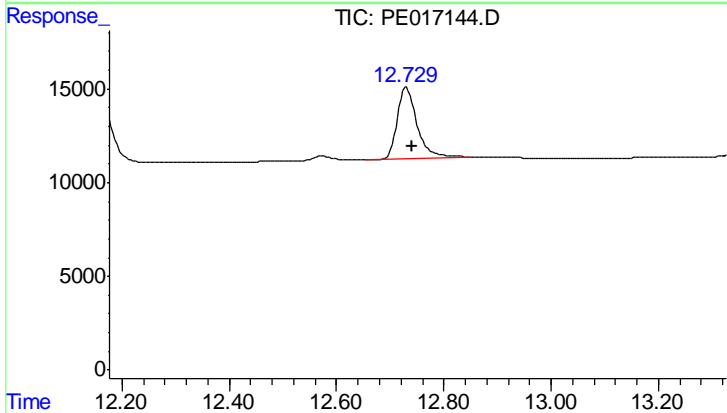
R.T.: 12.165 min
 Delta R.T.: -0.011 min
 Response: 77172
 Conc: 463.80 ng/ml



#9 2,4-D

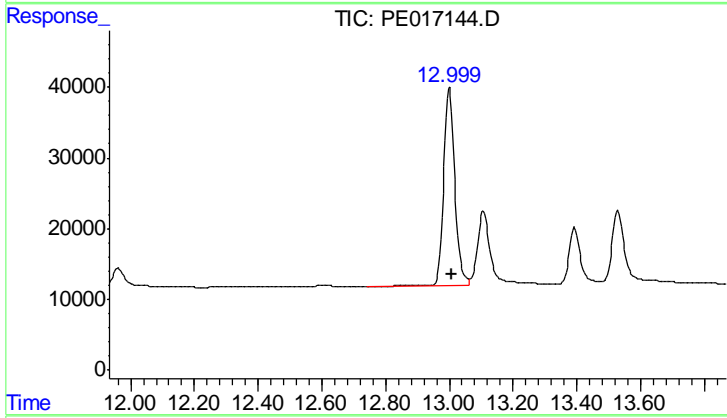
R.T.: 11.961 min
 Delta R.T.: -0.010 min
 Response: 61876
 Conc: 522.90 ng/ml

Instrument :
 ECD_E
 ClientSampleId :
 PB103037BS



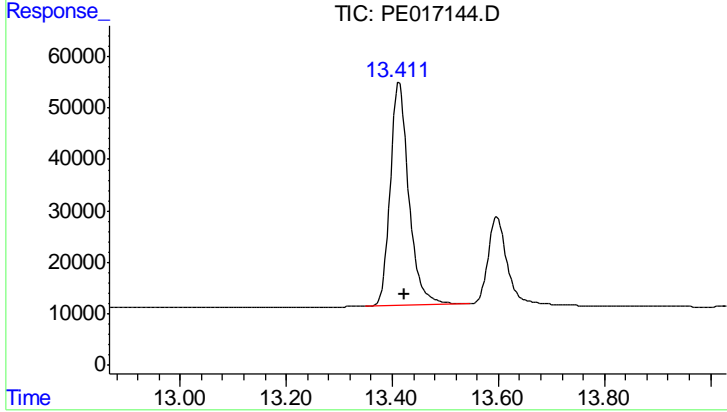
#9 2,4-D

R.T.: 12.730 min
 Delta R.T.: -0.012 min
 Response: 96332
 Conc: 479.65 ng/ml



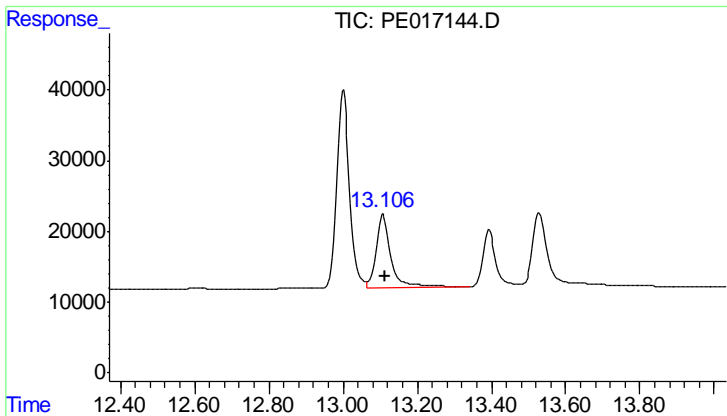
#10 Pentachlorophenol

R.T.: 13.000 min
 Delta R.T.: -0.009 min
 Response: 675068
 Conc: 507.06 ng/ml



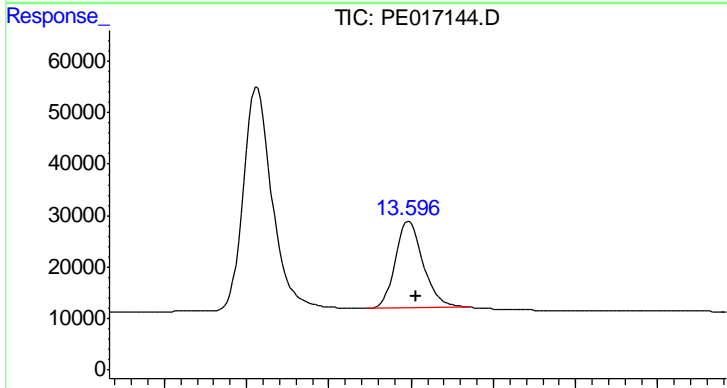
#10 Pentachlorophenol

R.T.: 13.413 min
 Delta R.T.: -0.010 min
 Response: 1055304
 Conc: 480.54 ng/ml

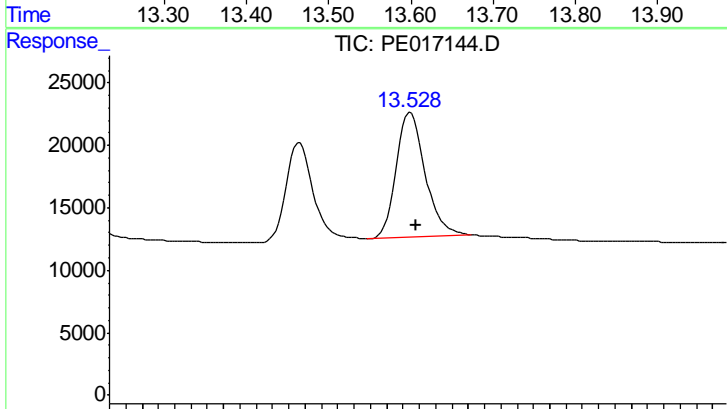


#11 2,4,5-TP (SILVEX)
 R.T.: 13.107 min
 Delta R.T.: -0.008 min
 Response: 294379
 Conc: 510.09 ng/ml

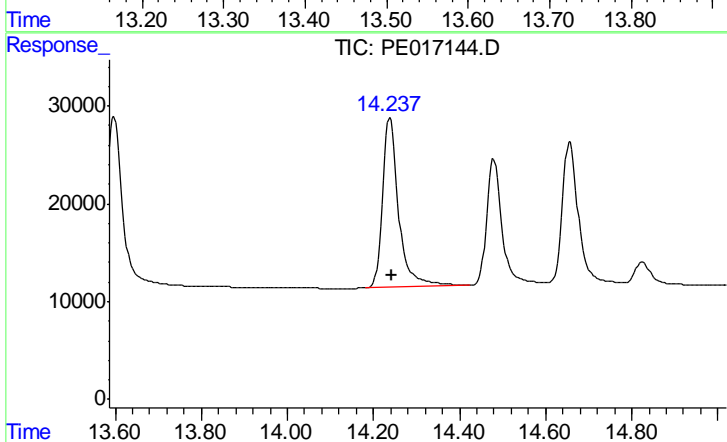
Instrument :
 ECD_E
 ClientSampleId :
 PB103037BS



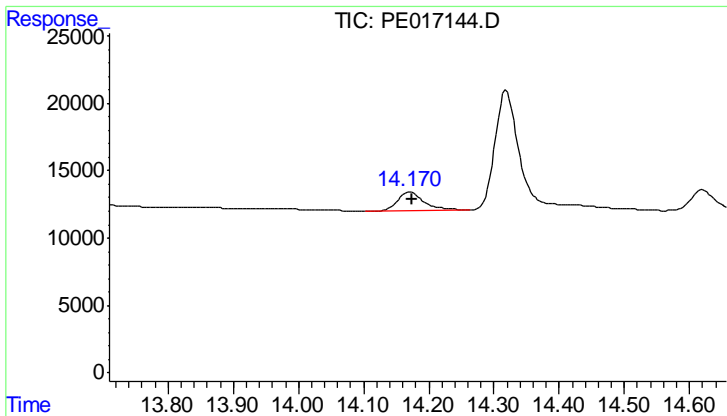
#11 2,4,5-TP (SILVEX)
 R.T.: 13.597 min
 Delta R.T.: -0.008 min
 Response: 398669
 Conc: 484.76 ng/ml



#12 2,4,5-T
 R.T.: 13.529 min
 Delta R.T.: -0.007 min
 Response: 246797
 Conc: 522.87 ng/ml



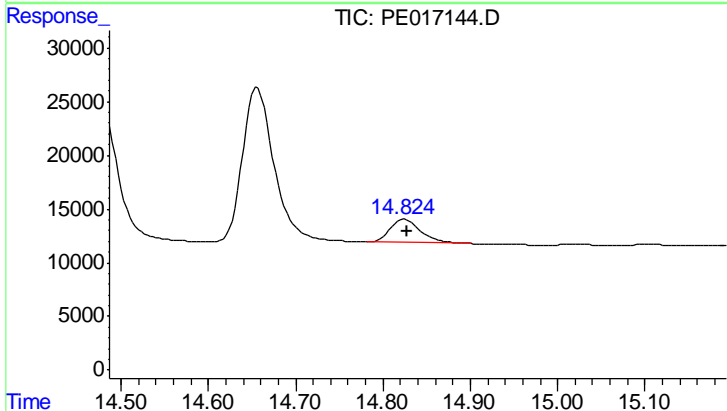
#12 2,4,5-T
 R.T.: 14.238 min
 Delta R.T.: -0.004 min
 Response: 451389
 Conc: 496.95 ng/ml



#13 2,4-DB

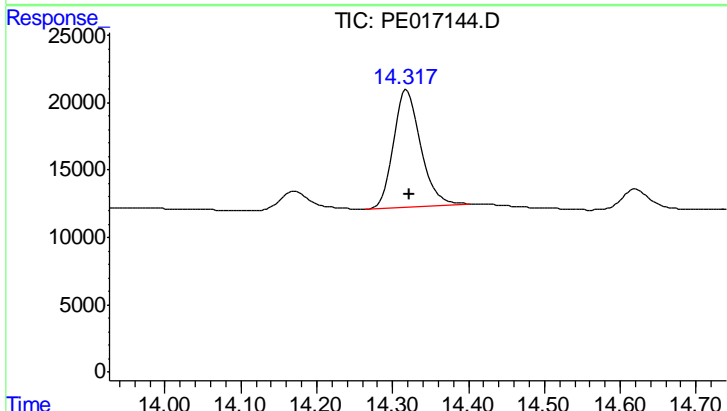
R.T.: 14.171 min
 Delta R.T.: -0.003 min
 Response: 37215
 Conc: 509.16 ng/ml

Instrument :
 ECD_E
 ClientSampleId :
 PB103037BS



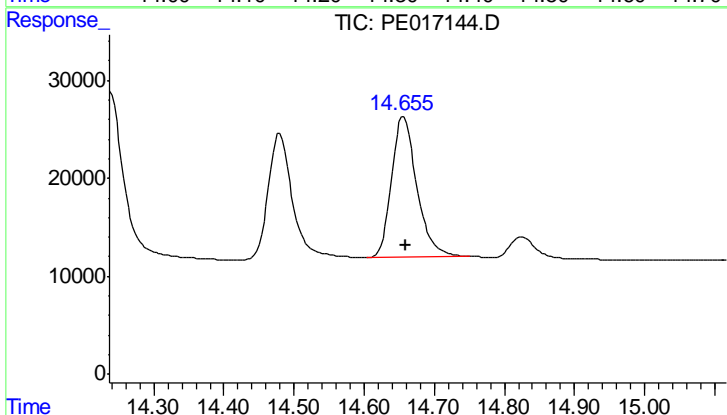
#13 2,4-DB

R.T.: 14.825 min
 Delta R.T.: -0.003 min
 Response: 52372
 Conc: 495.33 ng/ml



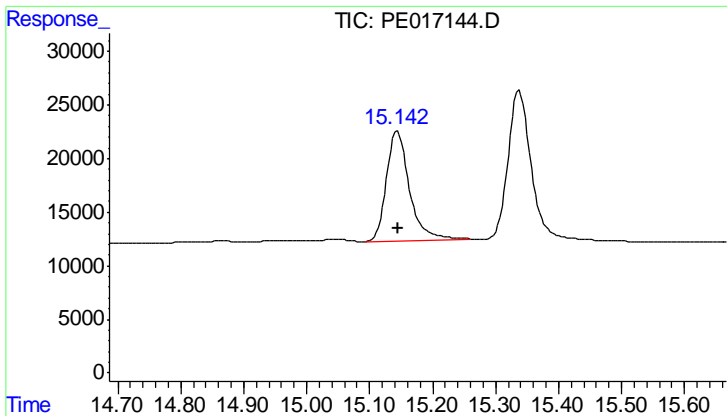
#14 DINOSEB

R.T.: 14.319 min
 Delta R.T.: -0.003 min
 Response: 213989
 Conc: 509.07 ng/ml



#14 DINOSEB

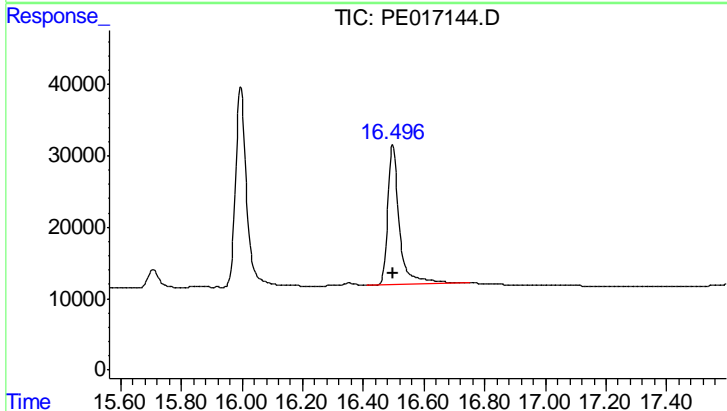
R.T.: 14.656 min
 Delta R.T.: -0.003 min
 Response: 361368
 Conc: 490.42 ng/ml



#15 Picloram

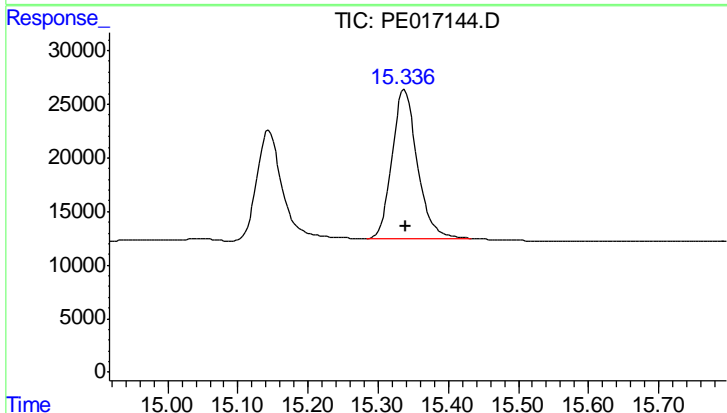
R.T.: 15.144 min
 Delta R.T.: -0.001 min
 Response: 260244
 Conc: 488.56 ng/ml

Instrument :
 ECD_E
 ClientSampleId :
 PB103037BS



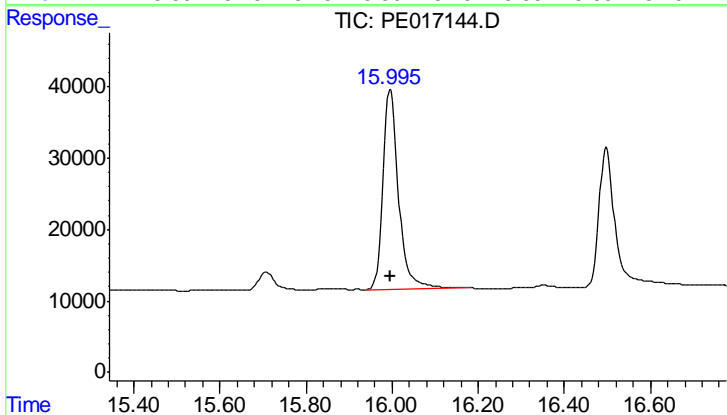
#15 Picloram

R.T.: 16.498 min
 Delta R.T.: 0.002 min
 Response: 523750
 Conc: 461.73 ng/ml



#16 DCPA

R.T.: 15.338 min
 Delta R.T.: -0.001 min
 Response: 345398
 Conc: 495.48 ng/ml



#16 DCPA

R.T.: 15.996 min
 Delta R.T.: 0.000 min
 Response: 703239
 Conc: 486.93 ng/ml