

Data Path : P:\HPCHEM1\ECD_E\Data\PE101217\
 Data File : PE017147.D
 Signal(s) : Signal #1: ECD1A.CH Signal #2: ECD2B.CH
 Acq On : 13 Oct 2017 7:16
 Operator : UA/AJ
 Sample : I5567-01
 Misc :
 ALS Vial : 21 Sample Multiplier: 1

Instrument :
 ECD_E
 ClientSampleId :
 HP-RR1

Integration File signal 1: autoint1.e
 Integration File signal 2: autoint2.e
 Quant Time: Oct 13 17:35:04 2017
 Quant Method : P:\HPCHEM1\ECD_E\Method\PE101217.M
 Quant Title : 8080.M
 QLast Update : Fri Oct 13 07:26:24 2017
 Response via : Initial Calibration
 Integrator: ChemStation

Volume Inj. : 2 µl
 Signal #1 Phase : ZB-35-HT Inferno Signal #2 Phase: ZB-XLB-HT Inferno
 Signal #1 Info : 30M x 0.25mm x 0.2 Signal #2 Info : 30M x 0.25mm x 0.25µm

Compound	RT#1	RT#2	Resp#1	Resp#2	ng/ml	ng/ml

System Monitoring Compounds						
4) S 2,4-DCAA	10.481	0.000	200086	0	2124.386	N.D. #
Target Compounds						
5) T DICAMBA	10.573	11.208	90196	109148	256.567	214.458
8) T DICHLORPROP	0.000	12.168	0	101419	N.D.	609.520 #
10) T Pentachlo...	13.021	0.000	45134	0	33.901	N.D. #
11) T 2,4,5-TP ...	13.099	0.000	28507	0	49.397	N.D. #
12) T 2,4,5-T	13.521	0.000	40982	0	86.827	N.D. #
13) T 2,4-DB	0.000	14.849	0	49825	N.D.	471.239 #
14) T DINOSEB	0.000	14.665	0	28372	N.D.	38.504 #
15) T Picloram	0.000	16.527	0	178185	N.D.	157.085 #

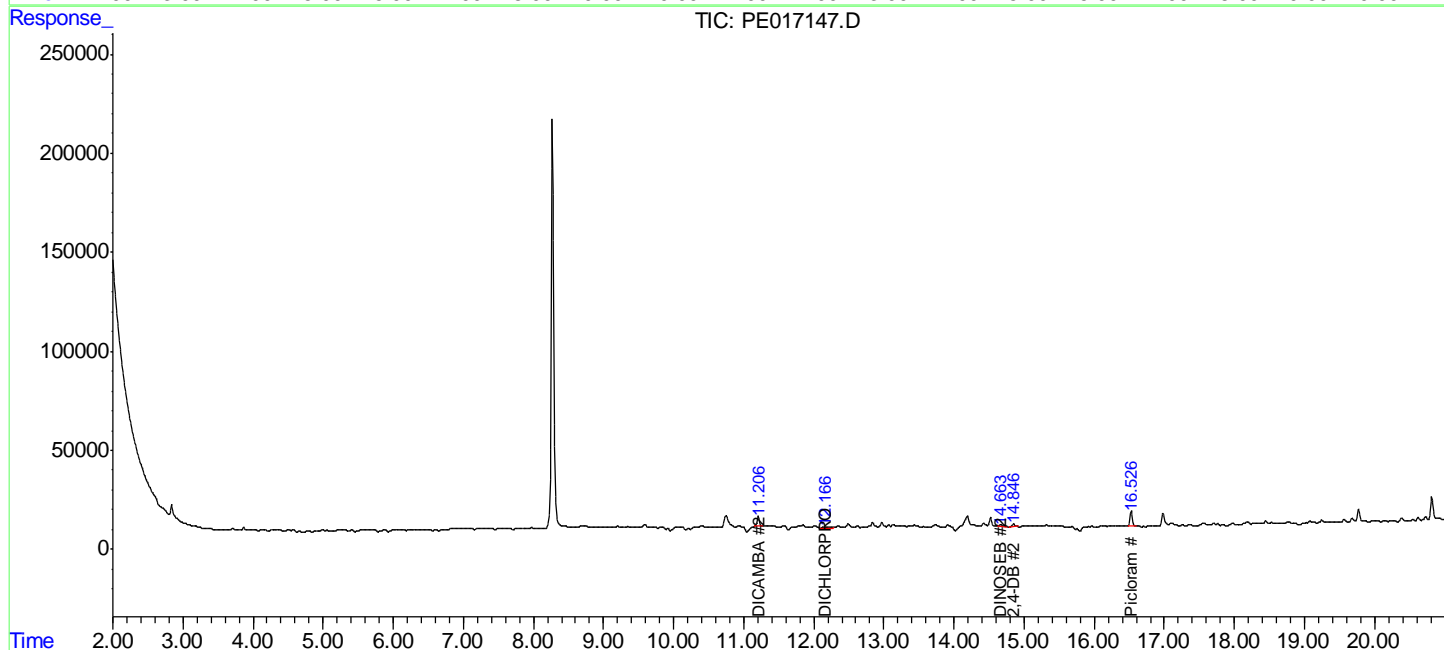
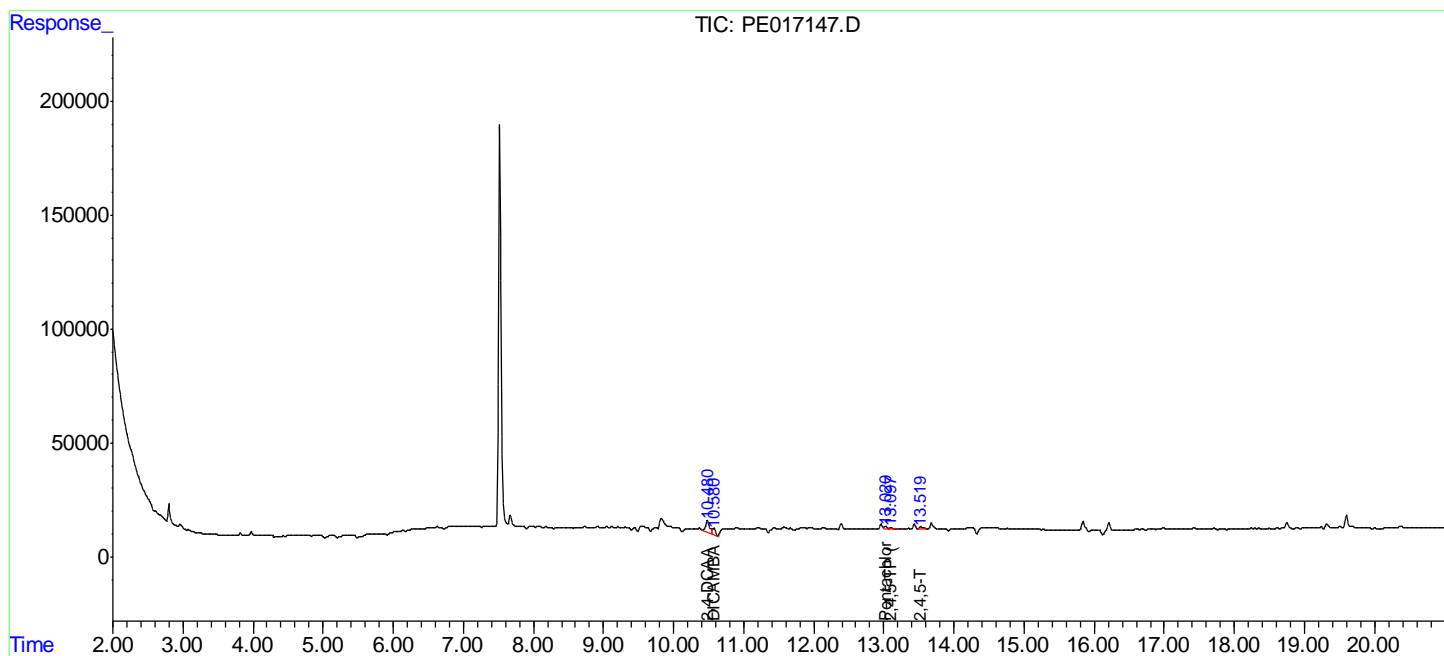
(f)=RT Delta > 1/2 Window (#)=Amounts differ by > 25% (m)=manual int.

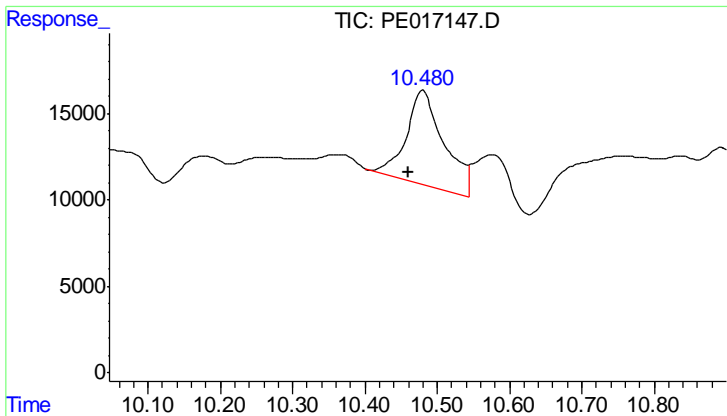
Data Path : P:\HPCHEM1\ECD_E\Data\PE101217\
 Data File : PE017147.D
 Signal(s) : Signal #1: ECD1A.CH Signal #2: ECD2B.CH
 Acq On : 13 Oct 2017 7:16
 Operator : UA/AJ
 Sample : I5567-01
 Misc :
 ALS Vial : 21 Sample Multiplier: 1

Instrument :
 ECD_E
 ClientSampled :
 HP-RR1

Integration File signal 1: autoint1.e
 Integration File signal 2: autoint2.e
 Quant Time: Oct 13 17:35:04 2017
 Quant Method : P:\HPCHEM1\ECD_E\Method\PE101217.M
 Quant Title : 8080.M
 QLast Update : Fri Oct 13 07:26:24 2017
 Response via : Initial Calibration
 Integrator: ChemStation

Volume Inj. : 2 µl
 Signal #1 Phase : ZB-35-HT Inferno Signal #2 Phase: ZB-XLB-HT Inferno
 Signal #1 Info : 30M x 0.25mm x0.2 Signal #2 Info : 30M x 0.25mm x 0.25µm

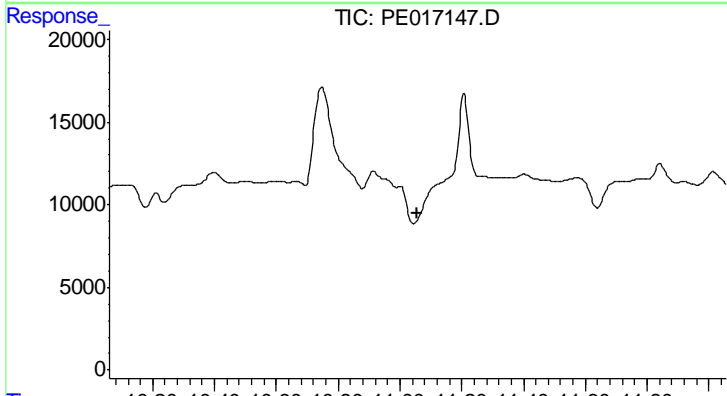




#4 2,4-DCAA

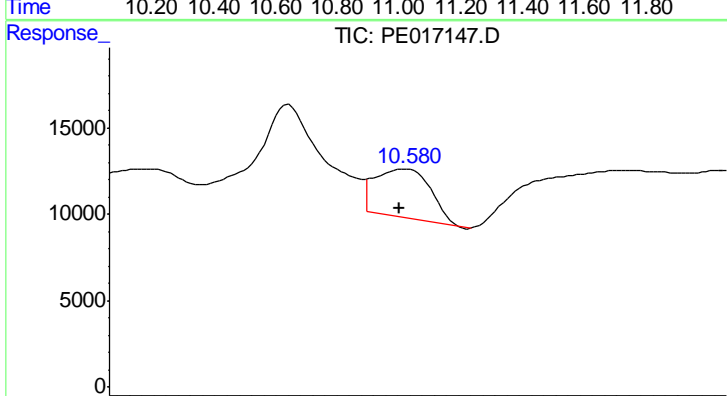
R.T.: 10.481 min
 Delta R.T.: 0.020 min
 Response: 200086
 Conc: 2124.39 ng/ml

Instrument :
 ECD_E
 ClientSampled :
 HP-RR1



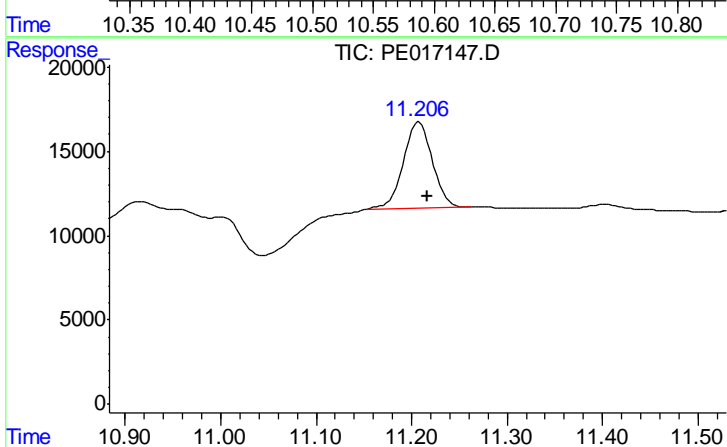
#4 2,4-DCAA

R.T.: 0.000 min
 Exp R.T.: 11.058 min
 Response: 0
 Conc: N.D.



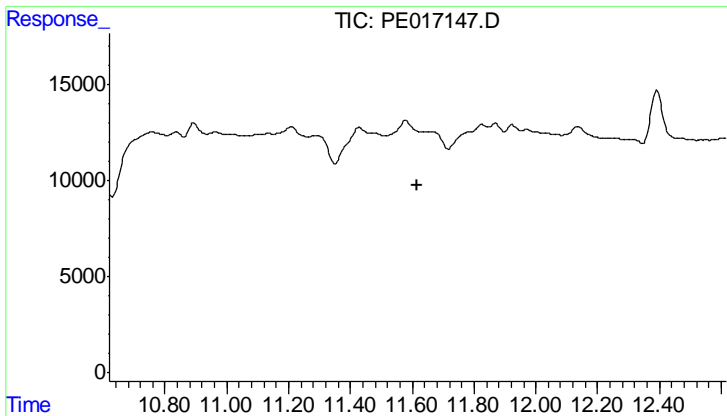
#5 DICAMBA

R.T.: 10.573 min
 Delta R.T.: 0.002 min
 Response: 90196
 Conc: 256.57 ng/ml



#5 DICAMBA

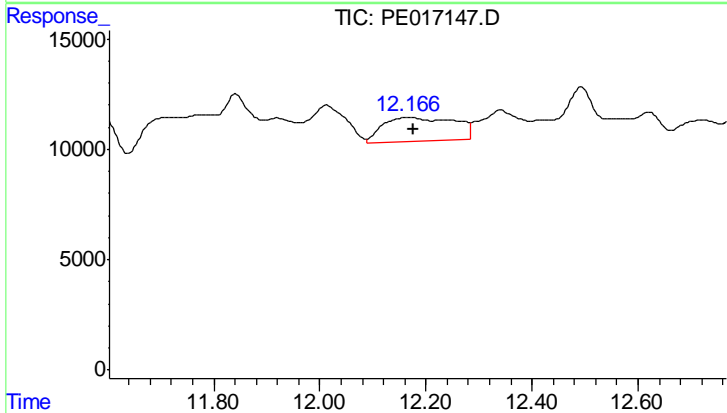
R.T.: 11.208 min
 Delta R.T.: -0.009 min
 Response: 109148
 Conc: 214.46 ng/ml



#8 DICHLORPROP

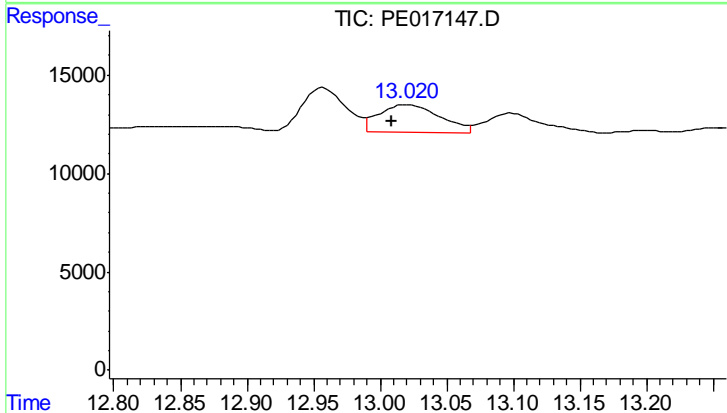
R.T.: 0.000 min
 Exp R.T.: 11.617 min
 Response: 0
 Conc: N.D.

Instrument :
 ECD_E
 ClientSampleId :
 HP-RR1



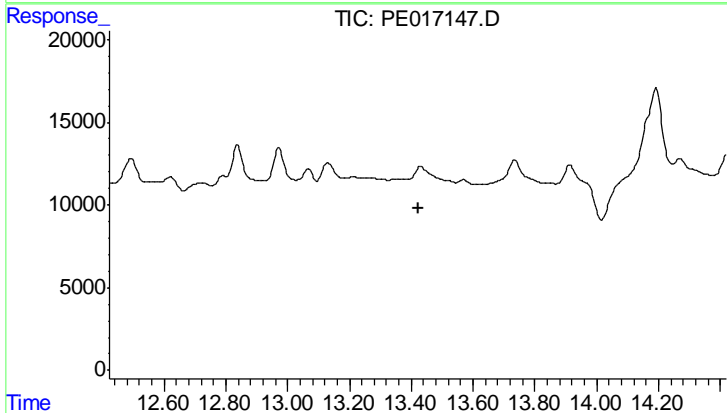
#8 DICHLORPROP

R.T.: 12.168 min
 Delta R.T.: -0.009 min
 Response: 101419
 Conc: 609.52 ng/ml



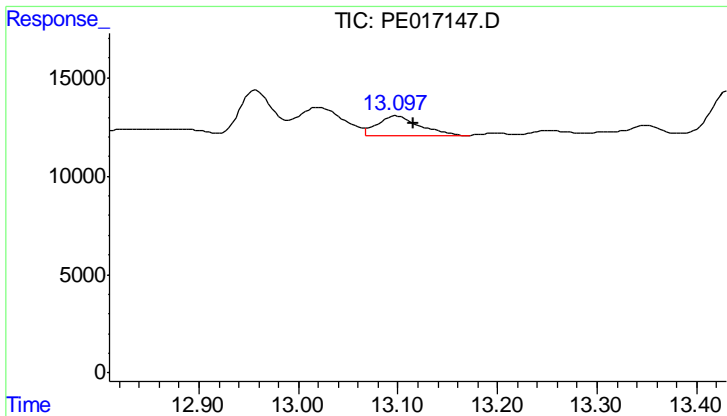
#10 Pentachlorophenol

R.T.: 13.021 min
 Delta R.T.: 0.012 min
 Response: 45134
 Conc: 33.90 ng/ml



#10 Pentachlorophenol

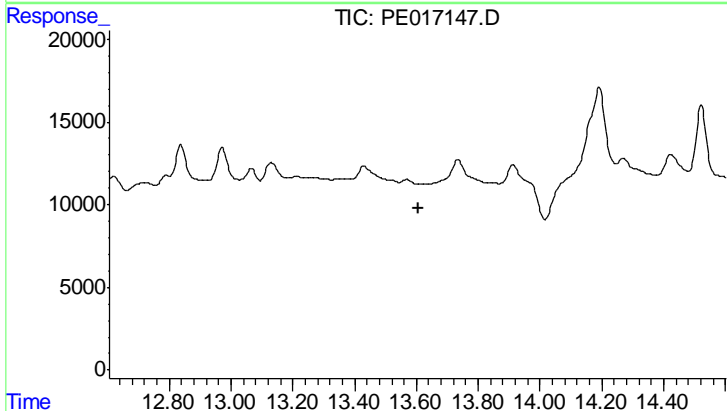
R.T.: 0.000 min
 Exp R.T.: 13.423 min
 Response: 0
 Conc: N.D.



#11 2,4,5-TP (SILVEX)

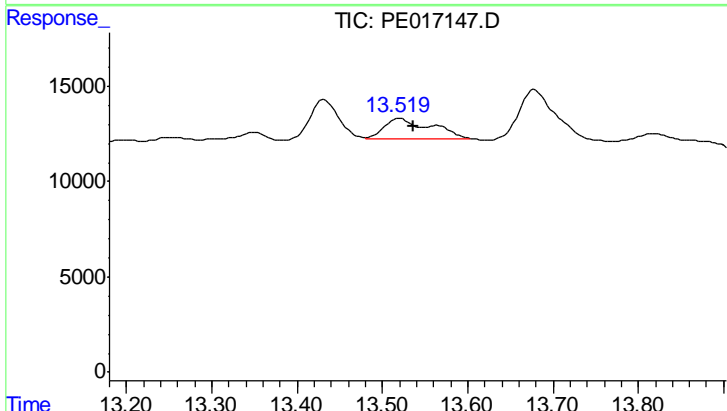
R.T.: 13.099 min
 Delta R.T.: -0.016 min
 Response: 28507
 Conc: 49.40 ng/ml

Instrument :
 ECD_E
 ClientSampleId :
 HP-RR1



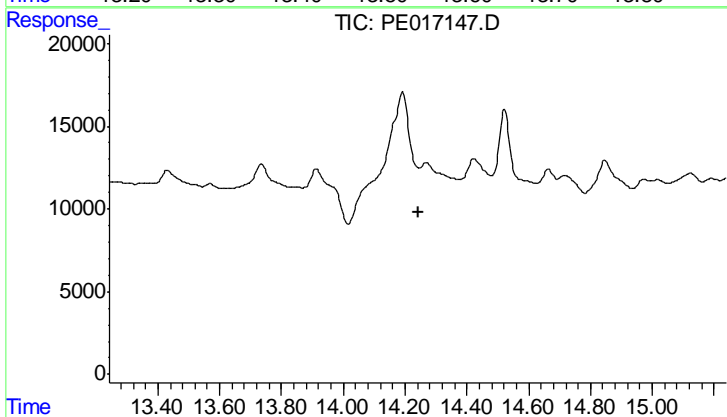
#11 2,4,5-TP (SILVEX)

R.T.: 0.000 min
 Exp R.T. : 13.605 min
 Response: 0
 Conc: N.D.



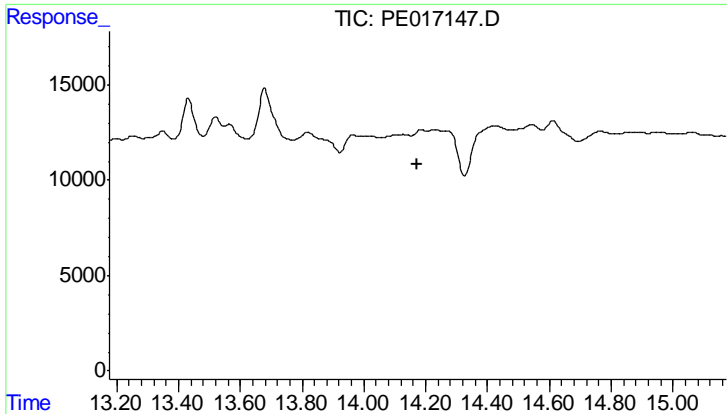
#12 2,4,5-T

R.T.: 13.521 min
 Delta R.T.: -0.015 min
 Response: 40982
 Conc: 86.83 ng/ml



#12 2,4,5-T

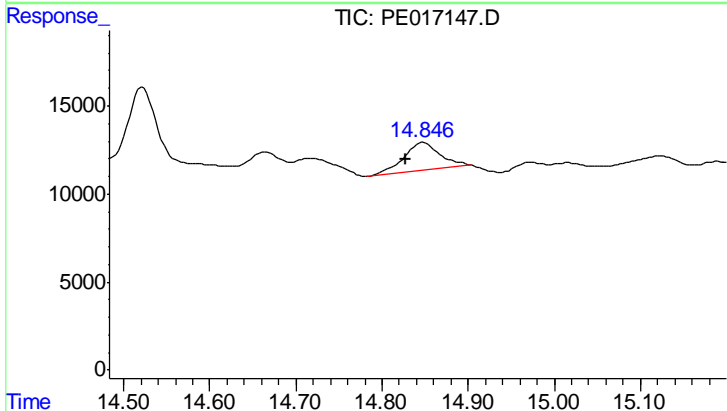
R.T.: 0.000 min
 Exp R.T. : 14.243 min
 Response: 0
 Conc: N.D.



#13 2,4-DB

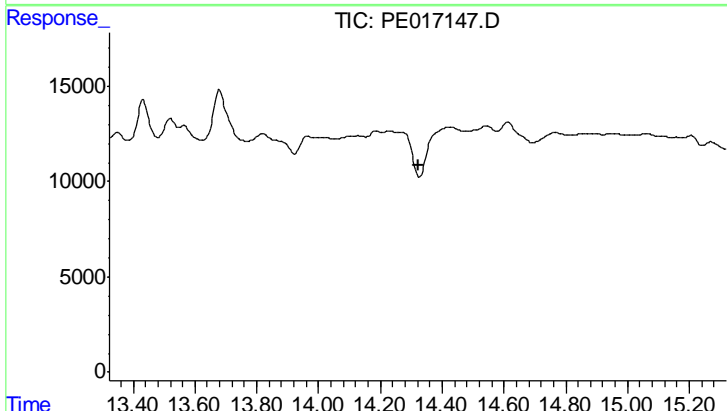
R.T.: 0.000 min
 Exp R.T.: 14.174 min
 Response: 0
 Conc: N.D.

Instrument :
 ECD_E
 ClientSampled :
 HP-RR1



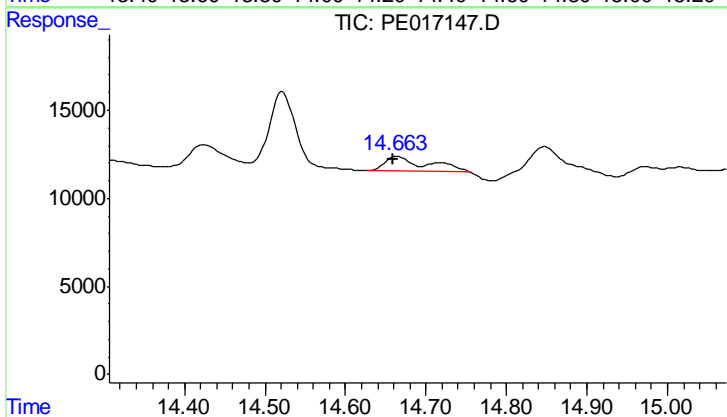
#13 2,4-DB

R.T.: 14.849 min
 Delta R.T.: 0.021 min
 Response: 49825
 Conc: 471.24 ng/ml



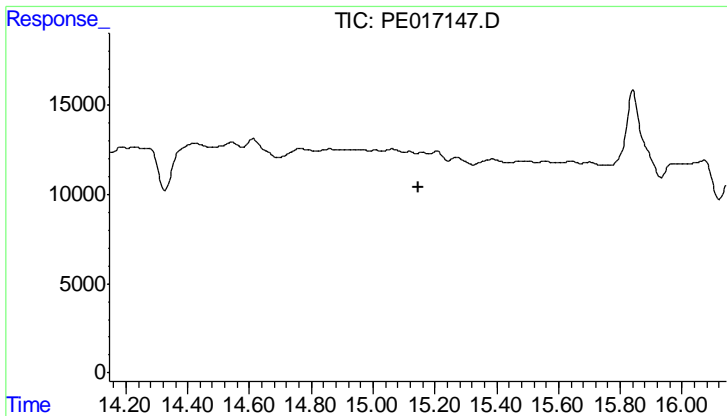
#14 DINOSEB

R.T.: 0.000 min
 Exp R.T.: 14.322 min
 Response: 0
 Conc: N.D.



#14 DINOSEB

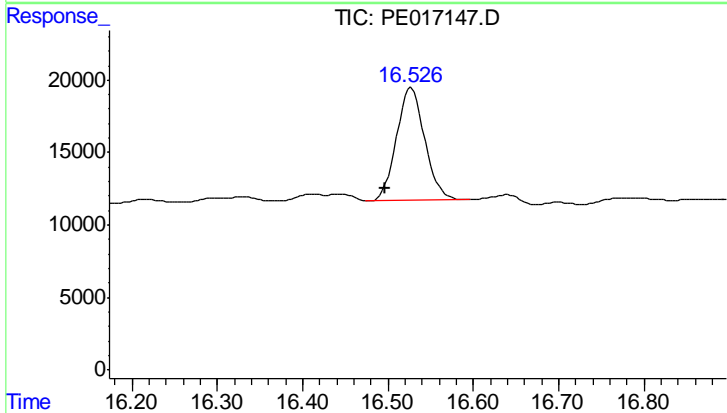
R.T.: 14.665 min
 Delta R.T.: 0.005 min
 Response: 28372
 Conc: 38.50 ng/ml



#15 Picloram

R.T.: 0.000 min
 Exp R.T.: 15.145 min
 Response: 0
 Conc: N.D.

Instrument :
 ECD_E
 ClientSampleId :
 HP-RR1



#15 Picloram

R.T.: 16.527 min
 Delta R.T.: 0.031 min
 Response: 178185
 Conc: 157.08 ng/ml