

Data Path : P:\HPCHEM1\ECD_E\Data\PE101217\
 Data File : PE017148.D
 Signal(s) : Signal #1: ECD1A.CH Signal #2: ECD2B.CH
 Acq On : 13 Oct 2017 7:45
 Operator : UA/AJ
 Sample : I5567-02
 Misc :
 ALS Vial : 22 Sample Multiplier: 1

Instrument :
 ECD_E
 ClientSampleId :
 HP-RR1_DUP

Integration File signal 1: autoint1.e
 Integration File signal 2: autoint2.e
 Quant Time: Oct 13 17:35:19 2017
 Quant Method : P:\HPCHEM1\ECD_E\Method\PE101217.M
 Quant Title : 8080.M
 QLast Update : Fri Oct 13 07:26:24 2017
 Response via : Initial Calibration
 Integrator: ChemStation

Volume Inj. : 2 µl
 Signal #1 Phase : ZB-35-HT Inferno Signal #2 Phase: ZB-XLB-HT Inferno
 Signal #1 Info : 30M x 0.25mm x 0.2 Signal #2 Info : 30M x 0.25mm x 0.25µm

Compound	RT#1	RT#2	Resp#1	Resp#2	ng/ml	ng/ml

System Monitoring Compounds						
4) S 2,4-DCAA	10.473	0.000	372669	0	3956.766	N.D. #
Target Compounds						
3) T 4-Nitroph...	9.535	0.000	28917	0	480.921	N.D. #
5) T DICAMBA	10.571	11.201	89530	279300	254.674	548.777 #
8) T DICHLORPROP	0.000	12.159	0	82942	N.D.	498.474 #
10) T Pentachlo...	13.015	13.419	93886	61209	70.520	27.872 #
11) T 2,4,5-TP ...	13.091	0.000	60277	0	104.446	N.D. #
13) T 2,4-DB	14.178	14.837	-2140	102324	N.D.	967.777
14) T DINOSEB	0.000	14.653	0	57693	N.D.	78.297 #
15) T Picloram	0.000	16.514	0	450740	N.D.	397.364 #

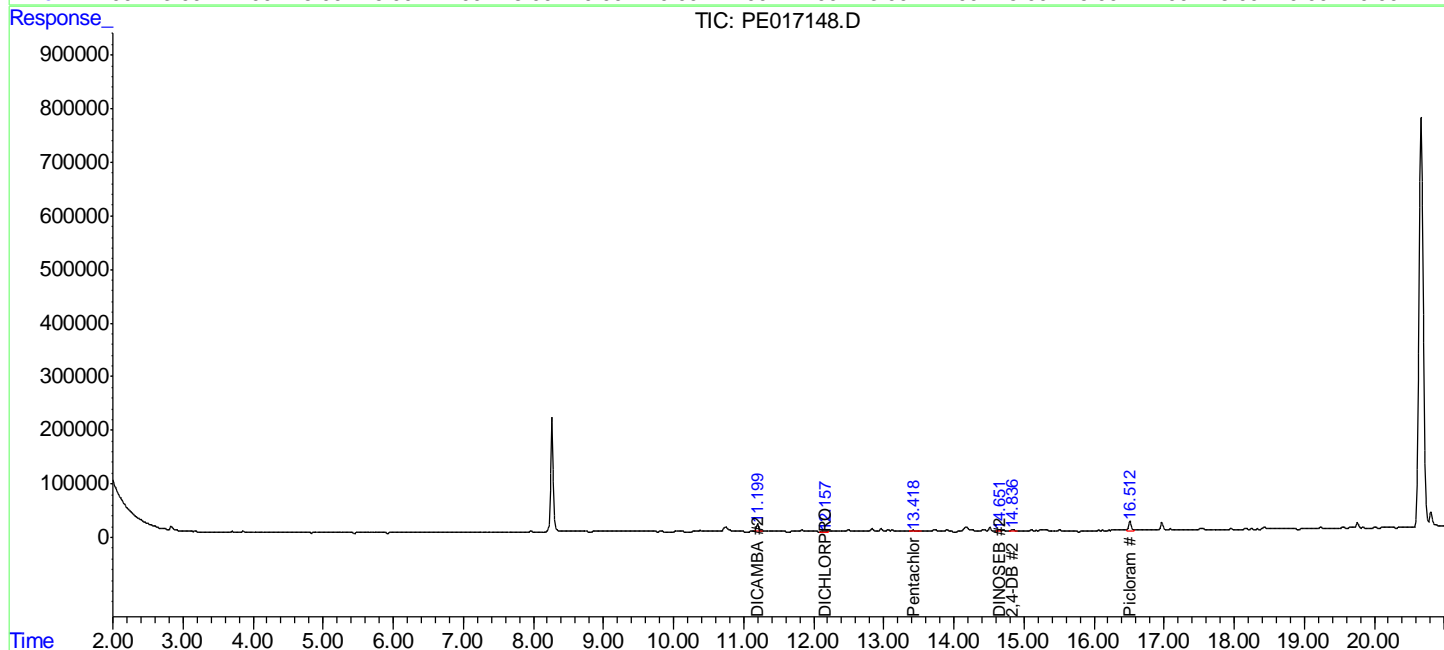
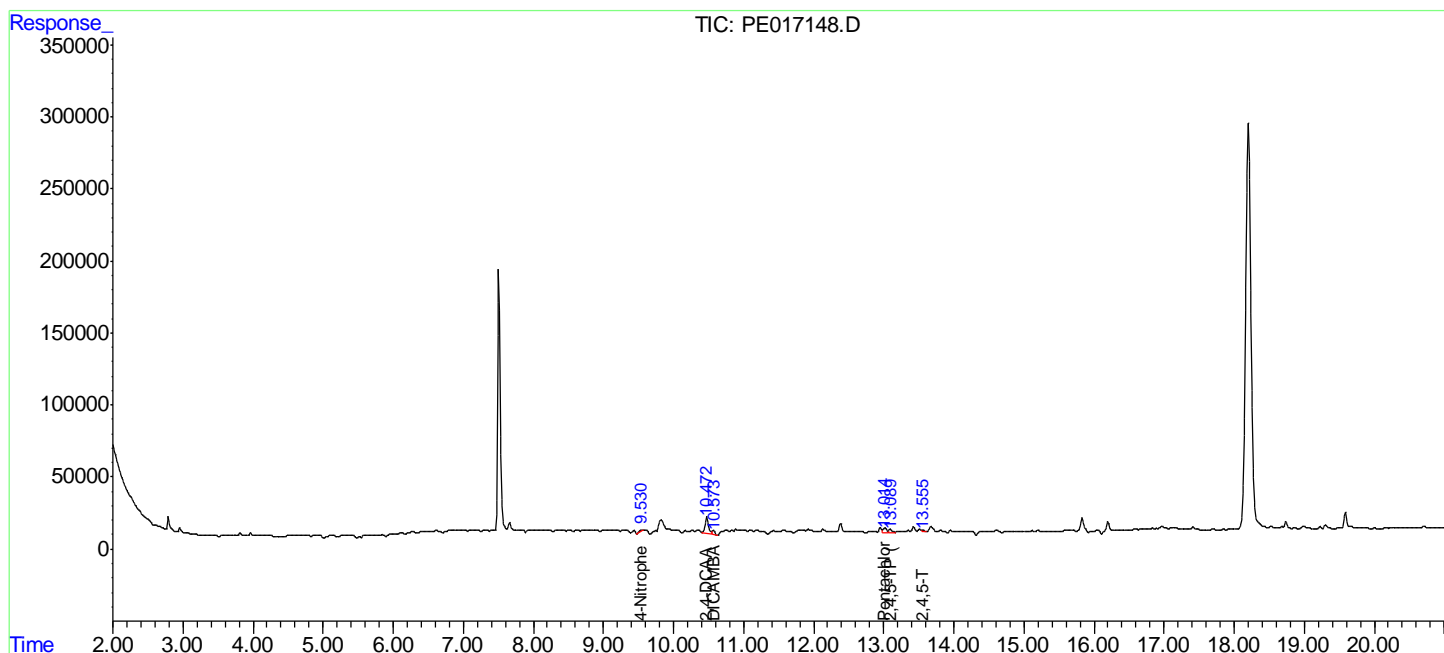
(f)=RT Delta > 1/2 Window (#)=Amounts differ by > 25% (m)=manual int.

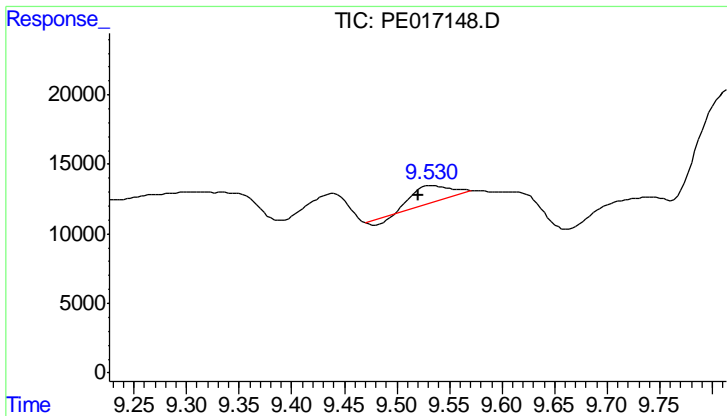
Data Path : P:\HPCHEM1\ECD_E\Data\PE101217\
 Data File : PE017148.D
 Signal(s) : Signal #1: ECD1A.CH Signal #2: ECD2B.CH
 Acq On : 13 Oct 2017 7:45
 Operator : UA/AJ
 Sample : I5567-02
 Misc :
 ALS Vial : 22 Sample Multiplier: 1

Instrument :
 ECD_E
 ClientSampled :
 HP-RR1_DUP

Integration File signal 1: autoint1.e
 Integration File signal 2: autoint2.e
 Quant Time: Oct 13 17:35:19 2017
 Quant Method : P:\HPCHEM1\ECD_E\Method\PE101217.M
 Quant Title : 8080.M
 QLast Update : Fri Oct 13 07:26:24 2017
 Response via : Initial Calibration
 Integrator: ChemStation

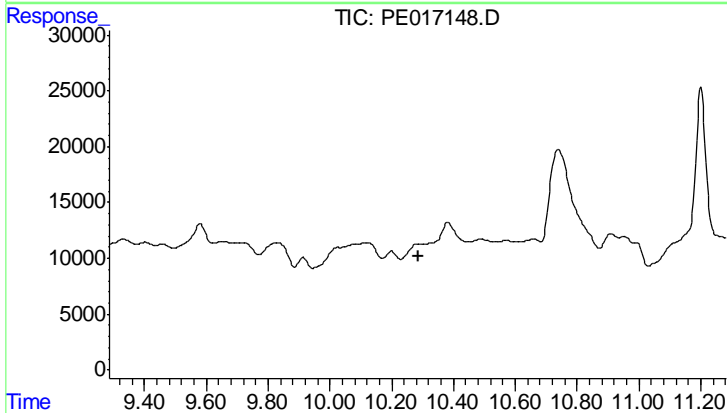
Volume Inj. : 2 µl
 Signal #1 Phase : ZB-35-HT Inferno Signal #2 Phase: ZB-XLB-HT Inferno
 Signal #1 Info : 30M x 0.25mm x0.2 Signal #2 Info : 30M x 0.25mm x 0.25µm



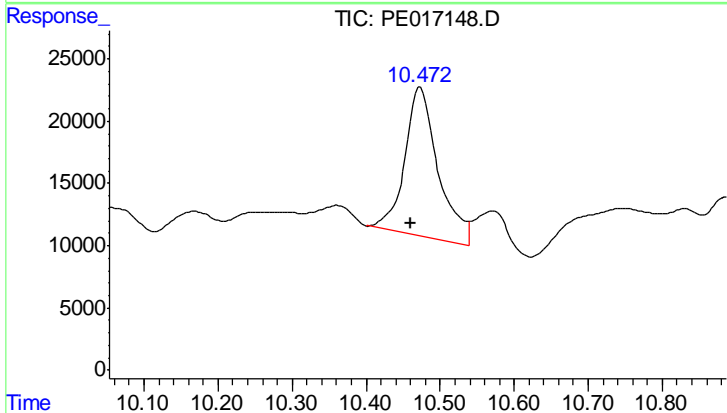


#3 4-Nitrophenol
 R.T.: 9.535 min
 Delta R.T.: 0.014 min
 Response: 28917
 Conc: 480.92 ng/ml

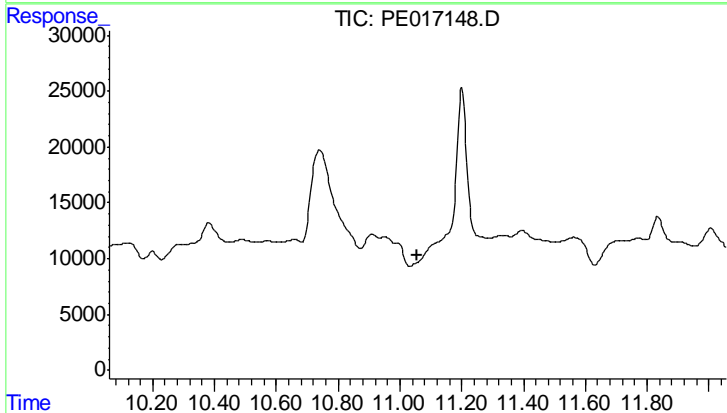
Instrument :
 ECD_E
 ClientSampleId :
 HP-RR1_DUP



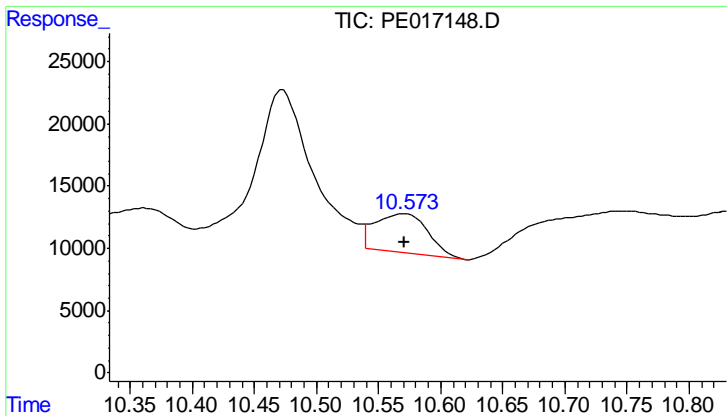
#3 4-Nitrophenol
 R.T.: 0.000 min
 Exp R.T. : 10.286 min
 Response: 0
 Conc: N.D.



#4 2,4-DCAA
 R.T.: 10.473 min
 Delta R.T.: 0.013 min
 Response: 372669
 Conc: 3956.77 ng/ml



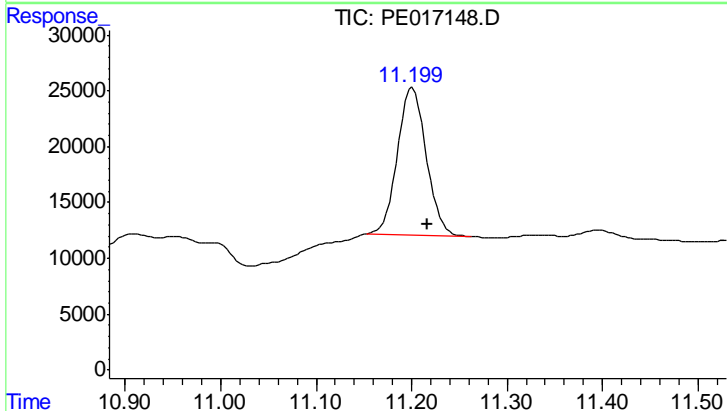
#4 2,4-DCAA
 R.T.: 0.000 min
 Exp R.T. : 11.058 min
 Response: 0
 Conc: N.D.



#5 DICAMBA

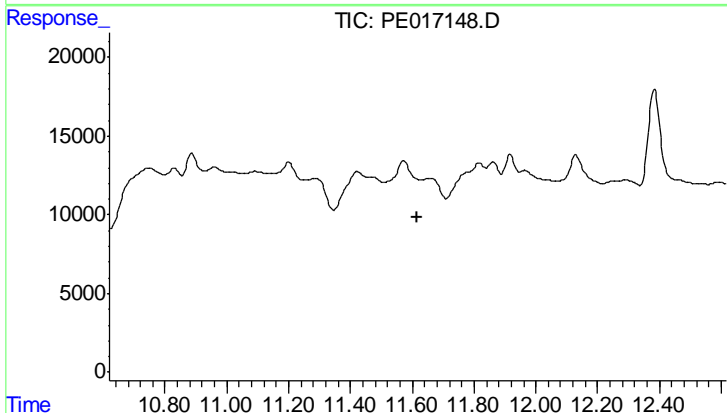
R.T.: 10.571 min
 Delta R.T.: 0.000 min
 Response: 89530
 Conc: 254.67 ng/ml

Instrument :
 ECD_E
 ClientSampleId :
 HP-RR1_DUP



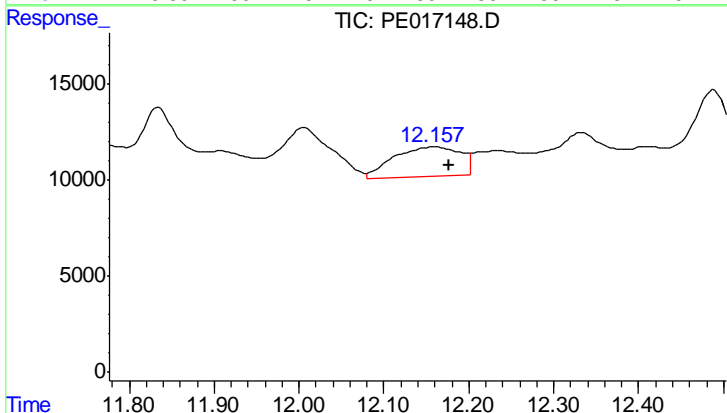
#5 DICAMBA

R.T.: 11.201 min
 Delta R.T.: -0.016 min
 Response: 279300
 Conc: 548.78 ng/ml



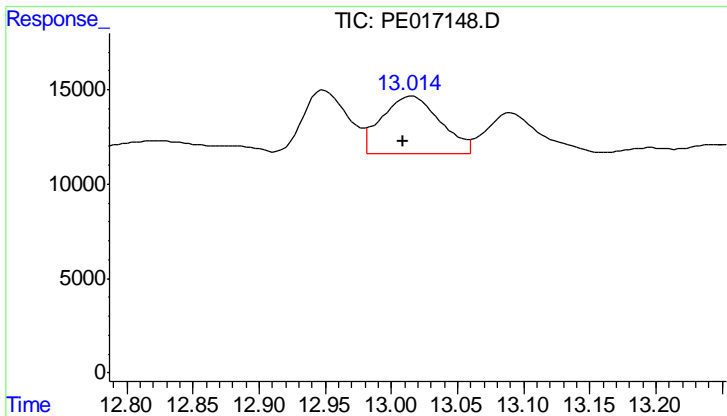
#8 DICHLORPROP

R.T.: 0.000 min
 Exp R.T. : 11.617 min
 Response: 0
 Conc: N.D.



#8 DICHLORPROP

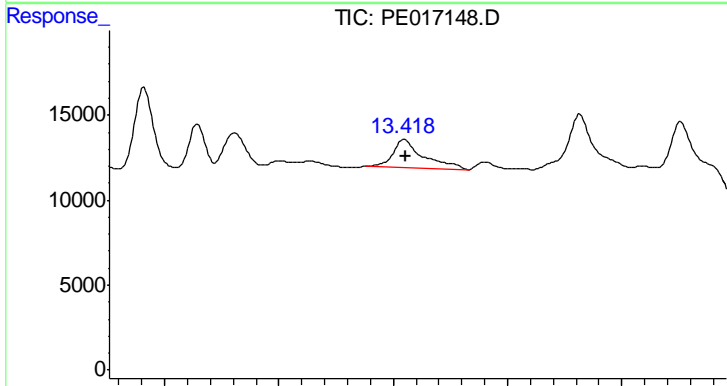
R.T.: 12.159 min
 Delta R.T.: -0.018 min
 Response: 82942
 Conc: 498.47 ng/ml



#10 Pentachlorophenol

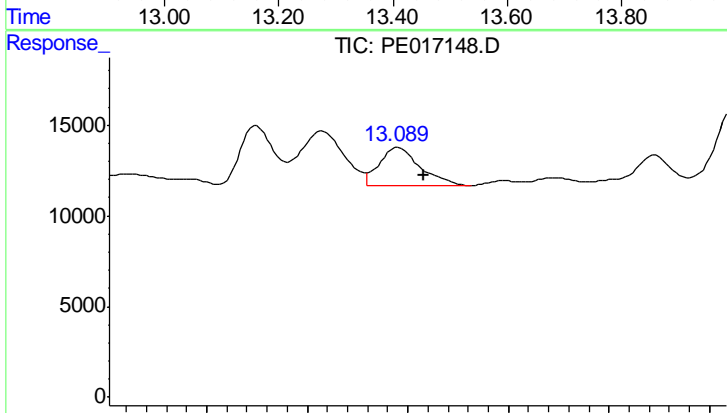
R.T.: 13.015 min
 Delta R.T.: 0.006 min
 Response: 93886
 Conc: 70.52 ng/ml

Instrument :
 ECD_E
 ClientSampleId :
 HP-RR1_DUP



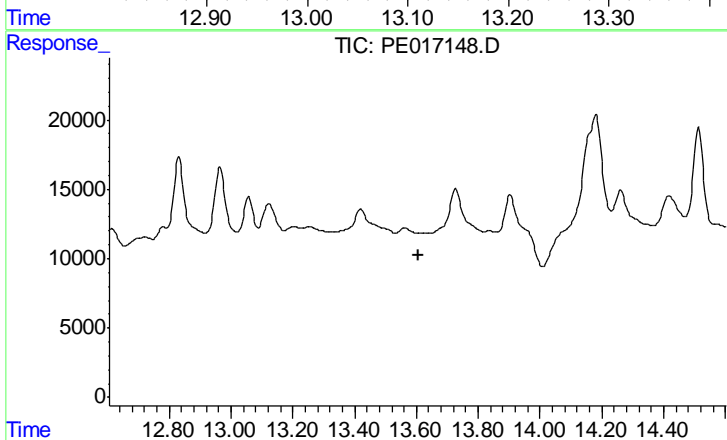
#10 Pentachlorophenol

R.T.: 13.419 min
 Delta R.T.: -0.003 min
 Response: 61209
 Conc: 27.87 ng/ml



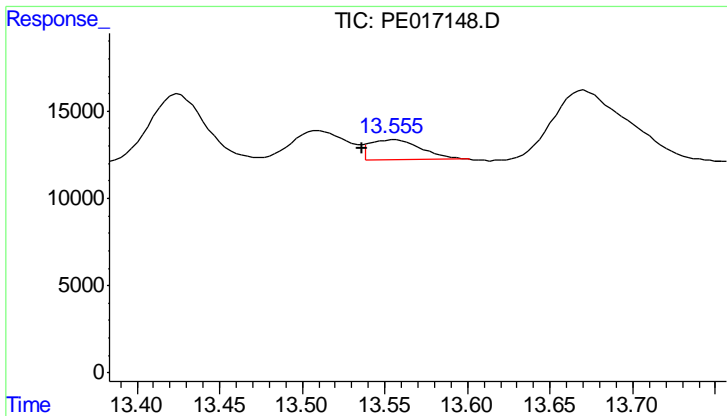
#11 2,4,5-TP (SILVEX)

R.T.: 13.091 min
 Delta R.T.: -0.024 min
 Response: 60277
 Conc: 104.45 ng/ml



#11 2,4,5-TP (SILVEX)

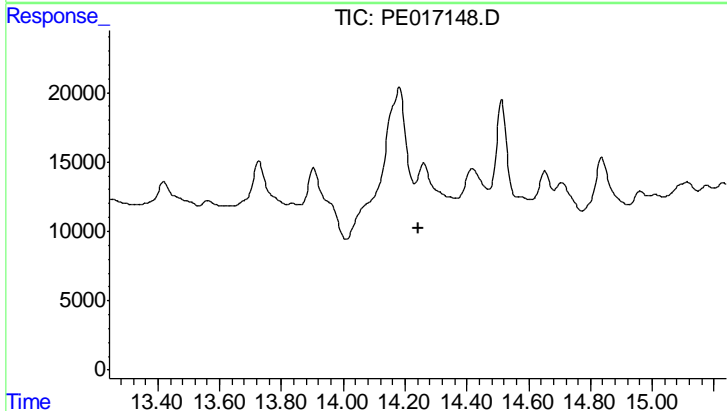
R.T.: 0.000 min
 Exp R.T. : 13.605 min
 Response: 0
 Conc: N.D.



#12 2,4,5-T

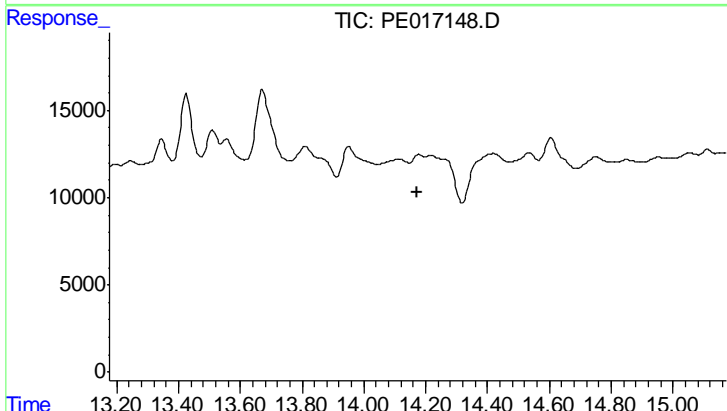
R.T.: 13.556 min
 Delta R.T.: 0.020 min
 Response: 25930
 Conc: 54.94 ng/ml

Instrument :
 ECD_E
 ClientSampleId :
 HP-RR1_DUP



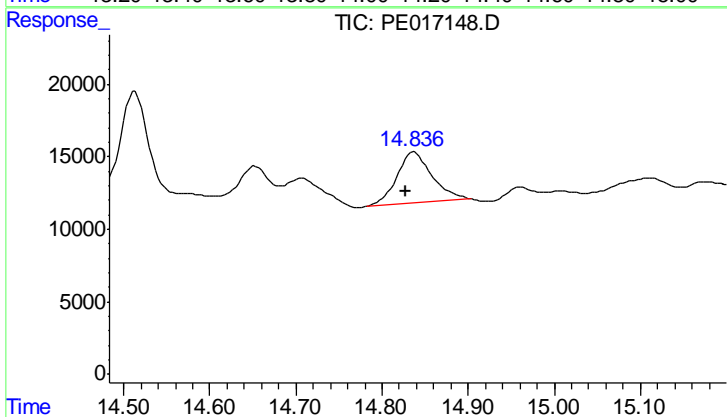
#12 2,4,5-T

R.T.: 14.261 min
 Delta R.T.: 0.018 min
 Response: -249906
 Conc: N.D.



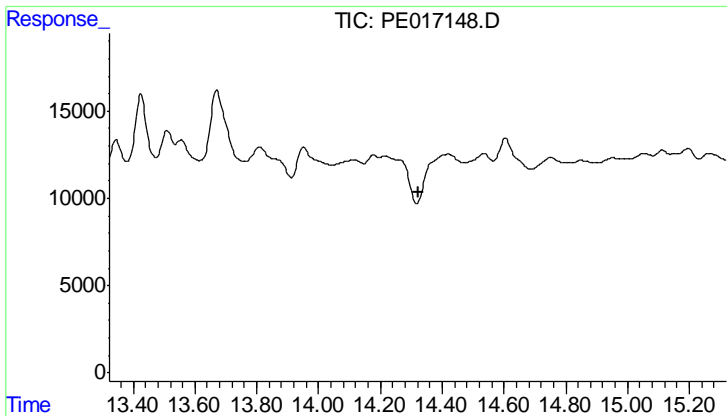
#13 2,4-DB

R.T.: 14.178 min
 Delta R.T.: 0.004 min
 Response: -2140
 Conc: N.D.



#13 2,4-DB

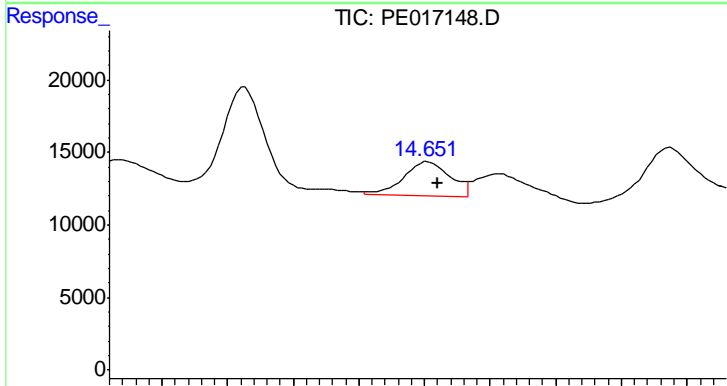
R.T.: 14.837 min
 Delta R.T.: 0.009 min
 Response: 102324
 Conc: 967.78 ng/ml



#14 DINOSEB

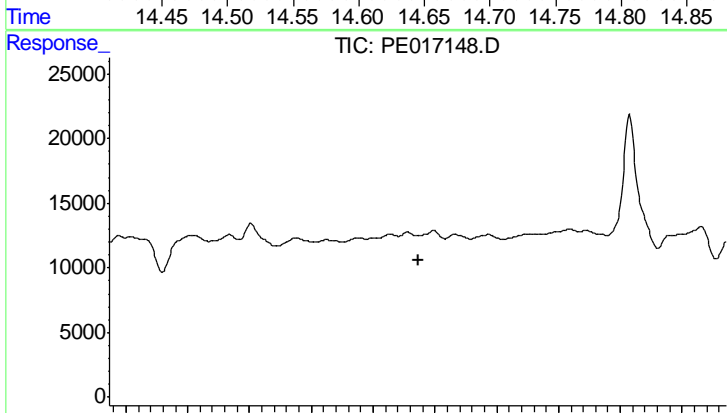
R.T.: 0.000 min
 Exp R.T.: 14.322 min
 Response: 0
 Conc: N.D.

Instrument :
 ECD_E
 ClientSampleId :
 HP-RR1_DUP



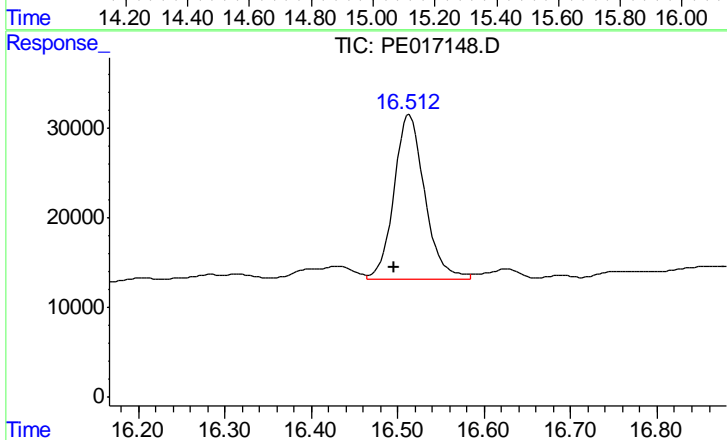
#14 DINOSEB

R.T.: 14.653 min
 Delta R.T.: -0.007 min
 Response: 57693
 Conc: 78.30 ng/ml



#15 Picloram

R.T.: 0.000 min
 Exp R.T.: 15.145 min
 Response: 0
 Conc: N.D.



#15 Picloram

R.T.: 16.514 min
 Delta R.T.: 0.017 min
 Response: 450740
 Conc: 397.36 ng/ml