

Data Path : P:\HPCHEM1\ECD_E\Data\PE101217\
 Data File : PE017156.D
 Signal(s) : Signal #1: ECD1A.CH Signal #2: ECD2B.CH
 Acq On : 13 Oct 2017 11:36
 Operator : UA/AJ
 Sample : I.BLK
 Misc :
 ALS Vial : 9 Sample Multiplier: 1

Instrument :
 ECD_E
 ClientSampleId :
 I.BLK

Integration File signal 1: autoint1.e
 Integration File signal 2: autoint2.e
 Quant Time: Oct 13 17:36:40 2017
 Quant Method : P:\HPCHEM1\ECD_E\Method\PE101217.M
 Quant Title : 8080.M
 QLast Update : Fri Oct 13 07:26:24 2017
 Response via : Initial Calibration
 Integrator: ChemStation

Volume Inj. : 2 µl
 Signal #1 Phase : ZB-35-HT Inferno Signal #2 Phase: ZB-XLB-HT Infernon
 Signal #1 Info : 30M x 0.25mm x0.2 Signal #2 Info : 30M x 0.25mm x 0.25µm

| Compound | RT#1 | RT#2 | Resp#1 | Resp#2 | ng/ml | ng/ml |
|-----------------------------|--------|--------|--------|--------|---------|---------|
| ----- | | | | | | |
| System Monitoring Compounds | | | | | | |
| 4) S 2,4-DCAA | 10.434 | 11.030 | 45661 | 55279 | 484.802 | 382.266 |

Target Compounds

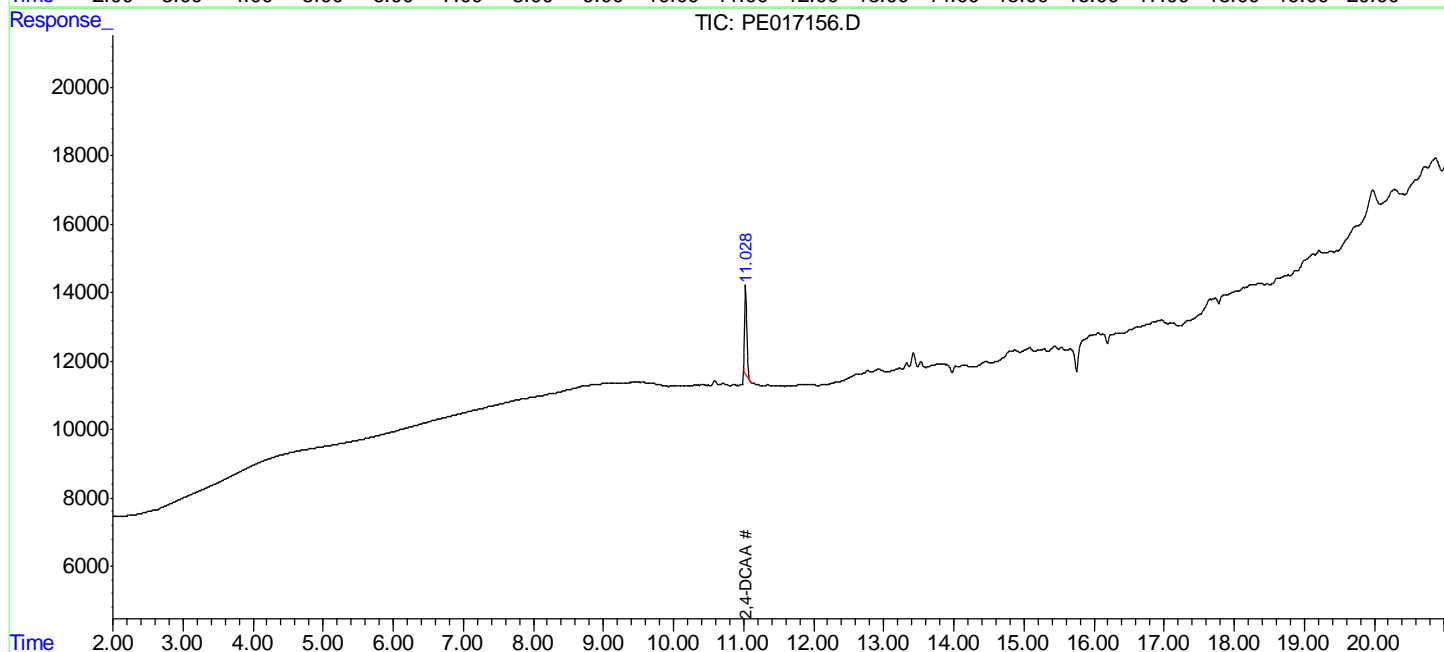
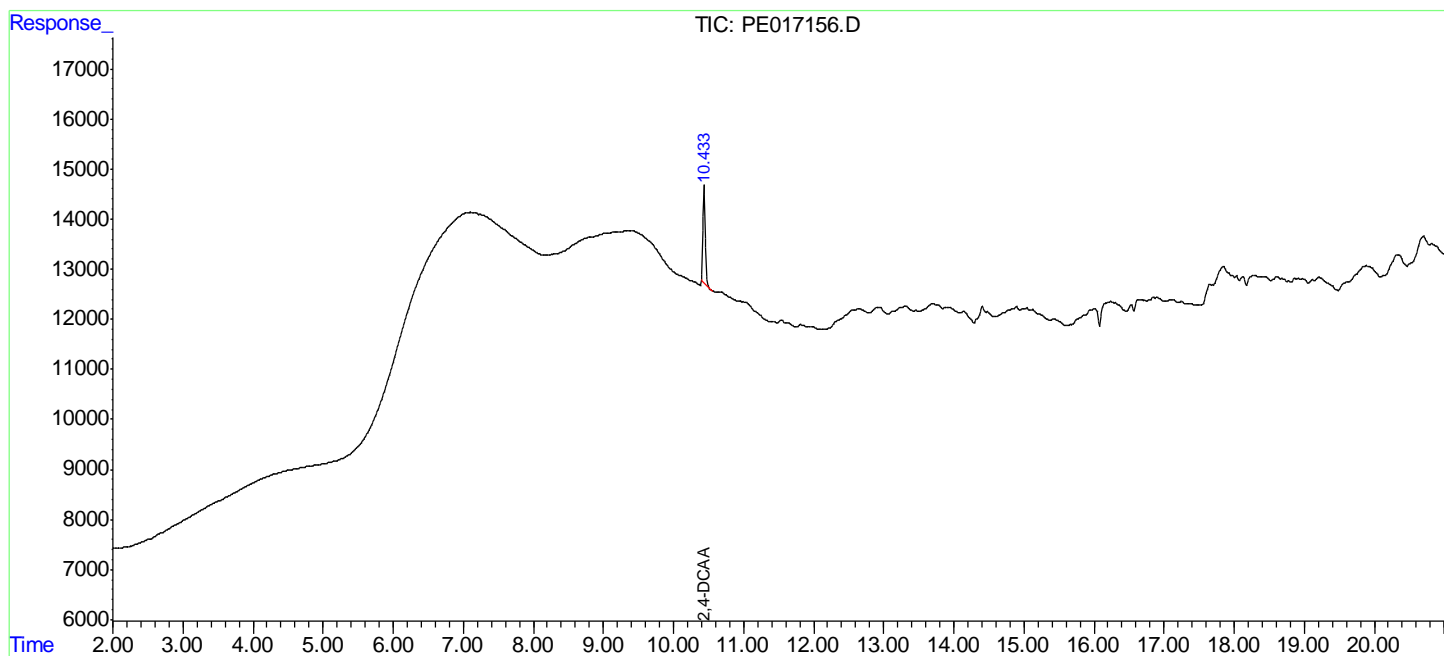
(f)=RT Delta > 1/2 Window (#)=Amounts differ by > 25% (m)=manual int.

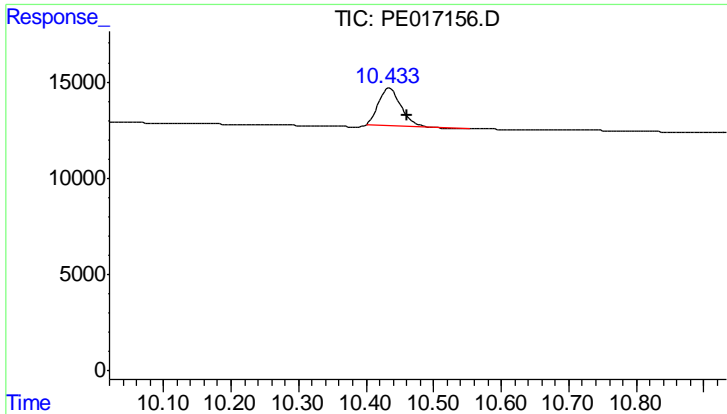
Data Path : P:\HPCHEM1\ECD_E\Data\PE101217\
 Data File : PE017156.D
 Signal(s) : Signal #1: ECD1A.CH Signal #2: ECD2B.CH
 Acq On : 13 Oct 2017 11:36
 Operator : UA/AJ
 Sample : I.BLK
 Misc :
 ALS Vial : 9 Sample Multiplier: 1

Instrument :
 ECD_E
 ClientSampled :
 I.BLK

Integration File signal 1: autoint1.e
 Integration File signal 2: autoint2.e
 Quant Time: Oct 13 17:36:40 2017
 Quant Method : P:\HPCHEM1\ECD_E\Method\PE101217.M
 Quant Title : 8080.M
 QLast Update : Fri Oct 13 07:26:24 2017
 Response via : Initial Calibration
 Integrator: ChemStation

Volume Inj. : 2 µl
 Signal #1 Phase : ZB-35-HT Inferno Signal #2 Phase: ZB-XLB-HT Infernon
 Signal #1 Info : 30M x 0.25mm x0.2 Signal #2 Info : 30M x 0.25mm x 0.25µm

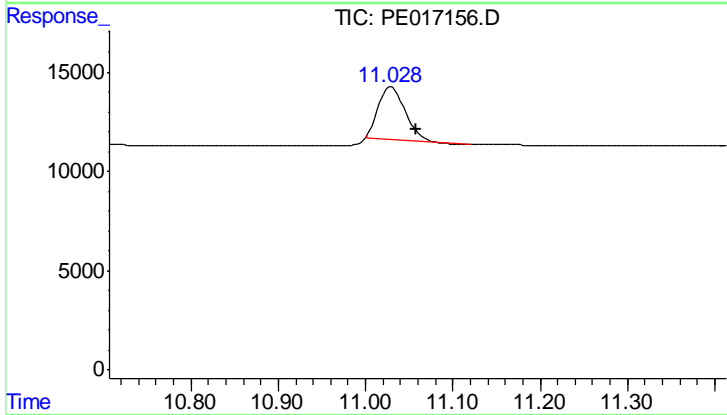




#4 2,4-DCAA

R.T.: 10.434 min
 Delta R.T.: -0.026 min
 Response: 45661
 Conc: 484.80 ng/ml

Instrument :
 ECD_E
 ClientSampleId :
 I.BLK



#4 2,4-DCAA

R.T.: 11.030 min
 Delta R.T.: -0.028 min
 Response: 55279
 Conc: 382.27 ng/ml