

Data Path : P:\HPCHEM1\FID A\Data\FA010318\
Data File : FA001990.D
Signal(s) : FID1A.CH
Acq On : 3 Jan 2018 12:28
Operator : UA/AJ
Sample : I7052-03DL 20X
Misc :
ALS Vial : 16 Sample Multiplier: 1

Integration File: autoint1.e
Quant Time: Jan 03 12:33:39 2018
Quant Method : P:\HPCHEM1\FID_A\GASES\Method\FA122717 GASES.M
Quant Title :
QLast Update : Wed Dec 27 17:07:17 2017
Response via : Initial Calibration
Integrator: ChemStation

Volume Inj. :
Signal Phase : RT-U Plot
Signal Info : 30M x 0.32mm

Compound	R.T.	Response	Conc Units

Target Compounds			
3) Methane	2.407	9905	244.531 ppmv

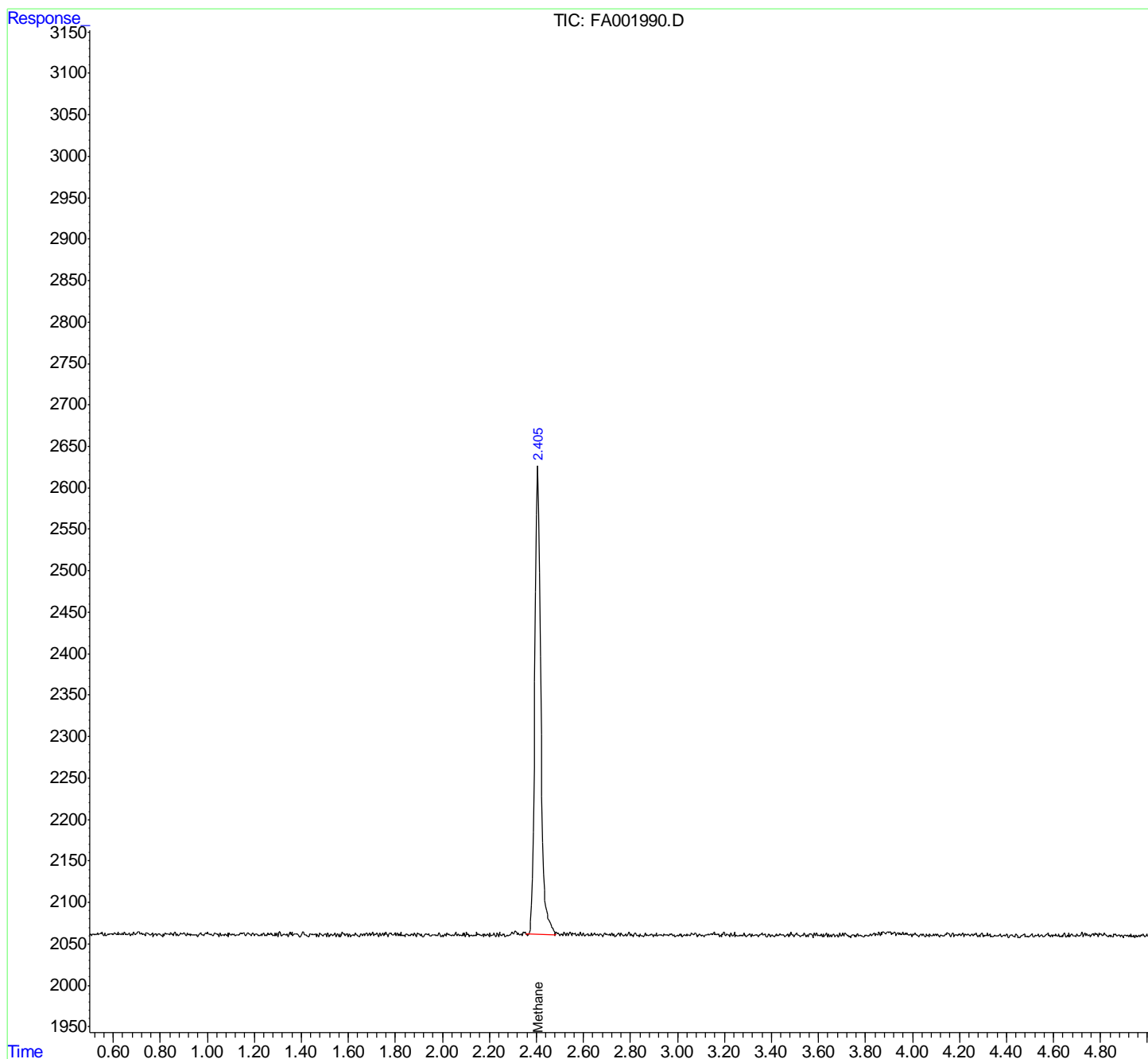
(f)=RT Delta > 1/2 Window

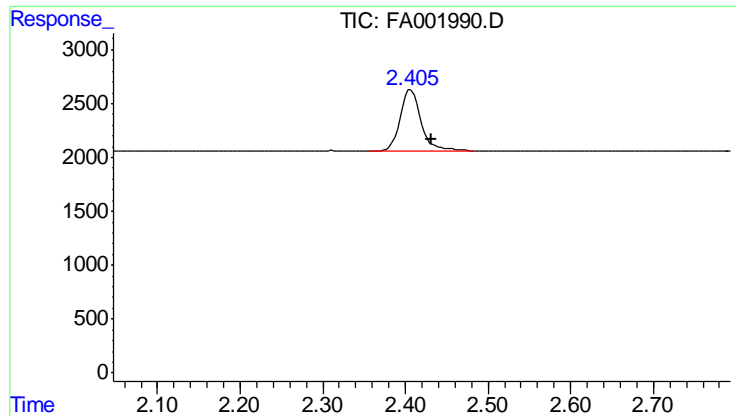
(m)=manual int.

Data Path : P:\HPCHEM1\FID A\Data\FA010318\
 Data File : FA001990.D
 Signal(s) : FID1A.CH
 Acq On : 3 Jan 2018 12:28
 Operator : UA/AJ
 Sample : I7052-03DL 20X
 Misc :
 ALS Vial : 16 Sample Multiplier: 1

Integration File: autoint1.e
 Quant Time: Jan 03 12:33:39 2018
 Quant Method : P:\HPCHEM1\FID_A\GASES\Method\FA122717 GASES.M
 Quant Title :
 QLast Update : Wed Dec 27 17:07:17 2017
 Response via : Initial Calibration
 Integrator: ChemStation

Volume Inj. :
 Signal Phase : RT-U Plot
 Signal Info : 30M x 0.32mm





#3 Methane
R.T.: 2.407 min
Delta R.T.: -0.024 min
Response: 9905
Conc: 244.53 ppmv