

Data Path : P:\HPCHEM1\FID A\Data\FA010318\
Data File : FA001975.D
Signal(s) : FID1A.CH
Acq On : 3 Jan 2018 10:13
Operator : UA/AJ
Sample : 200 PPMV CCC
Misc :
ALS Vial : 1 Sample Multiplier: 1

Integration File: autoint1.e
Quant Time: Jan 03 16:25:12 2018
Quant Method : P:\HPCHEM1\FID_A\GASES\Method\FA122717 GASES.M
Quant Title :
QLast Update : Thu Dec 28 18:47:10 2017
Response via : Initial Calibration
Integrator: ChemStation

Volume Inj. :
Signal Phase : RT-U Plot
Signal Info : 30M x 0.32mm

Compound	R.T.	Response	Conc Units

Target Compounds			
1) Ethane	3.880	12588	195.240 ppmv m
2) Ethylene	3.562	11656	188.053 ppmv m
3) Methane	2.409	8155	201.323 ppmv

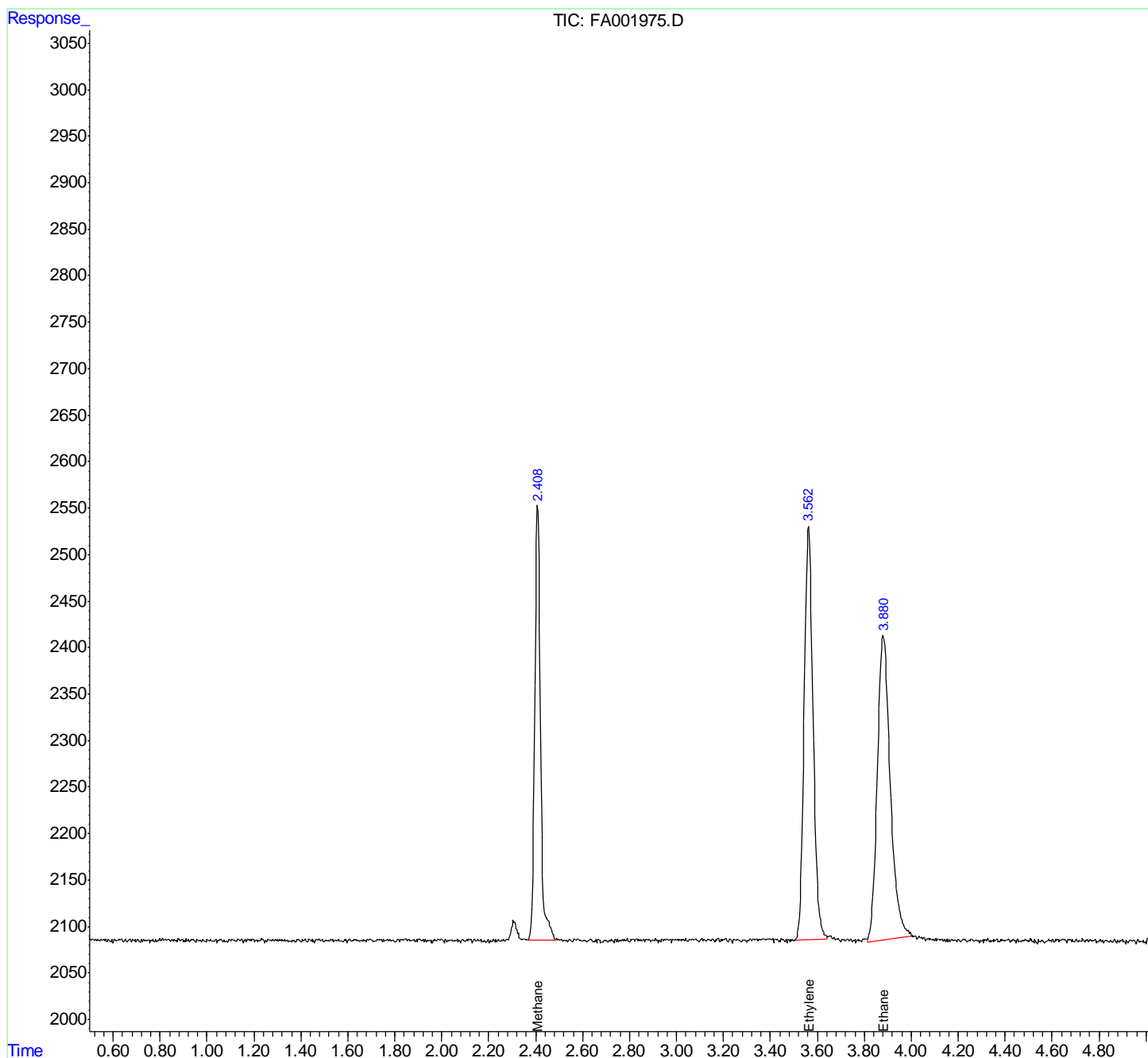
(f)=RT Delta > 1/2 Window

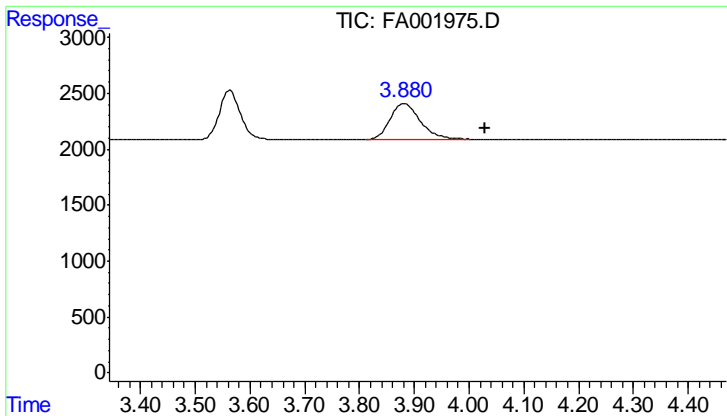
(m)=manual int.

Data Path : P:\HPCHEM1\FID A\Data\FA010318\
 Data File : FA001975.D
 Signal(s) : FID1A.CH
 Acq On : 3 Jan 2018 10:13
 Operator : UA/AJ
 Sample : 200 PPMV CCC
 Misc :
 ALS Vial : 1 Sample Multiplier: 1

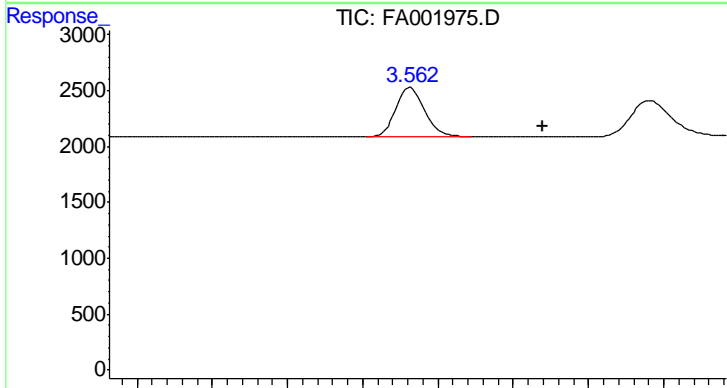
Integration File: autoint1.e
 Quant Time: Jan 03 16:25:12 2018
 Quant Method : P:\HPCHEM1\FID_A\GASES\Method\FA122717 GASES.M
 Quant Title :
 QLast Update : Thu Dec 28 18:47:10 2017
 Response via : Initial Calibration
 Integrator: ChemStation

Volume Inj. :
 Signal Phase : RT-U Plot
 Signal Info : 30M x 0.32mm

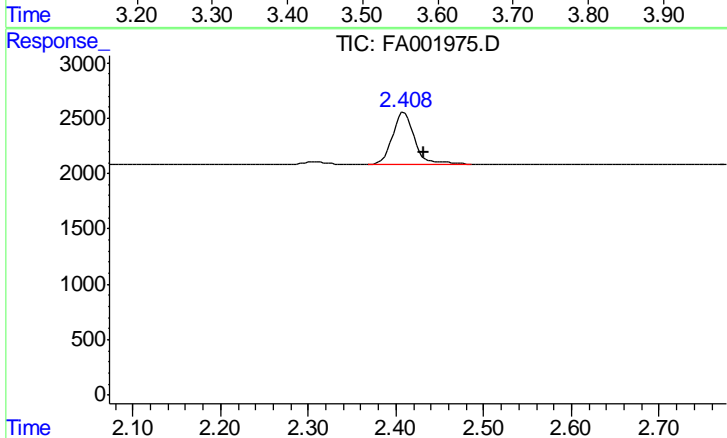




#1 Ethane
 R.T.: 3.880 min
 Delta R.T.: -0.150 min
 Response: 12588
 Conc: 195.24 ppmv m



#2 Ethylene
 R.T.: 3.562 min
 Delta R.T.: -0.176 min
 Response: 11656
 Conc: 188.05 ppmv m



#3 Methane
 R.T.: 2.409 min
 Delta R.T.: -0.022 min
 Response: 8155
 Conc: 201.32 ppmv m